

# Cisco

## Exam Questions 300-615

Troubleshooting Cisco Data Center Infrastructure (DCIT)



#### NEW QUESTION 1

A vPC Type-1 inconsistency between two vPC peers in a VXLAN EVPN setup is discovered. Which two actions need to be attempted to resolve the issue? (Choose two.)

- A. Configure the NVE interfaces to be Up on both switches.
- B. Set a different distributed gateway virtual MAC address.
- C. Set a different secondary IP addresses on NVE source-interface.
- D. Configure the same VNI to multicast group mapping.
- E. Set a different primary IP addresses on NVE source-interface.

**Answer:** AD

#### NEW QUESTION 2

A mission-critical server is connected to site A. Connectivity to this server is lost from site B because the MAC route is missing in the OTV VDC of the Nexus 7000 in site B due to MAC aging. Which action allows the flooding of the unknown unicast MAC on the Nexus 7000 in the OTV VDC?

- A. Use route-map to advertise this MAC statically and redistribute with ISIS.
- B. Unknown unicast flooding is not allowed.
- C. Use the otv flood mac <> command to selectively flood traffic for a given MAC.
- D. Use the otv isis bfd <> command to configure BFD protocol.

**Answer:** B

#### NEW QUESTION 3

```
Debug messages from Router-A
OSPF: Rcv DBD from 10.100.1.2 on GigabitEthernet0/1 seq 0x2124 opt 0x52 flag 0x2
      len 1452 mtu 2000 state EXSTART
OSPF: Nbr 10.100.1.2 has larger interface MTU
SPF: Send DBD to 10.100.1.2 on GigabitEthernet0/1 seq 0x9E6 opt 0x52 flag 0x7
      len 32
OSPF: Retransmitting DBD to 10.100.1.2 on GigabitEthernet0/1 [10]
OSPF: Send DBD to 10.100.1.2 on GigabitEthernet0/1 seq 0x9E6 opt 0x52 flag 0x7
      len 32
OSPF Retransmitting DBD to 10.100.1.2 on GigabitEthernet0/1[11]
%OSPF-5-ADJCHG: Process 1, Nbr 10.100.1.2 on GigabitEthernet0/1 from EXSTART to
      DOWN, Neighbor Down: Too many retransmissions

Debug messages from Router-B
OSPF: Rev DBD from 10.100.100.1 on GigabitEthernet0/1 seq 0x89E opt 0x52 flag 0x7
      len 32 mtu 1600 state EXCHANGE
OSPF: Nbr 10.100.100.1 has smaller interface MTU
```

Refer to the exhibit. An OSPF adjacency between Router-A and Router-B cannot reach the FULL state. Which action resolves the issue?

- A. Adjust the MTU on Router-A to 1600.
- B. Disable the check of the MTU value.
- C. Set the OSPF media type to point-to-point.
- D. Adjust the MTU on Router-B to 1604.

**Answer:** B

#### NEW QUESTION 4

```
switch1# show vpc brief
Legend:
(*) - local vPC is down, forwarding via vPC peer-link

vPC domain id : 500
Peer status : peer link is down
vPC keep-alive status : Suspended (Destination IP not reachable)
Configuration consistency status : success
vPC role : secondary, operational primary
Number of vPCs configured : 4
Peer Gateway : Disabled
Dual-active exluded VLANs : -

vPC Peer-link status
-----
id  Port  Status  Active  vlans
---  ----  -
1  Po500  down  -

switch2# show vpc brief
Legend:
(*) - local vPC is down, forwarding via vPC peer-link

vPC domain id : 20
Peer status : peer link is down
vPC keep-alive status : Suspended (Destination IP not reachable)
Configuration consistency status : success
vPC role : secondary, operational primary
Number of vPCs configured : 4
Peer Gateway : Disabled
Dual-active exluded VLANs : -

vPC Peer-link status
-----
id  Port  Status  Active  vlans
---  ----  -
1  Po500  down  -
```

Refer to the exhibit. vPC between switch1 and switch2 is not working. Which two actions are needed to fix the problem? (Choose two.)

- A. Match vPC domain ID between the two devices.
- B. Configure IP address on the interface.
- C. Activate VLANs on the vPC.
- D. Configure vPC peer link and vPC peer keepalive correctly.
- E. Configure one of the switches as primary for the vPC.

Answer: AC

#### NEW QUESTION 5

An engineer removes a VMM domain from an endpoint group called EPG-1, but the distributed port group fails to be deleted. Which action must be taken to resolve the issue?

- A. Remove the port group manually.
- B. Migrate all virtual machines in the EPG-1 to different hypervisors.
- C. Remove the remaining EPGs from the VMM domain.
- D. Migrate all virtual machines in the EPG-1 to different port groups.

Answer: C

#### NEW QUESTION 6

```
switch# show interface fc1/5
fc1/5 is down (NPV upstream port not available)
Hardware is Fibre Channel, SFP is short wave laser w/o OFC (SN)
Port WWN is 20:47:00:0d:ac:a4:3b:83
Admin port mode is F, turnk mode is off
snmp link state traps are enabled
Port vsan is 100
Receive data field Size is 2112
```

Refer to the exhibit. Interface fc1/5 is offline. Which action should be taken to troubleshoot the issue?

- A. Activate the correct zoneset for VSAN 100.
- B. Update the FLOGI database to contain the FLOGI entries for interface fc1/5 in VSAN 100.
- C. Update the FCNs database to contain names for VSAN 100.
- D. Configure the upstream ports and the server ports to be in VSAN 100.

**Answer: D**

#### NEW QUESTION 7

DRAG DROP

An engineer is troubleshooting issues in Cisco UCS Director. Drag and drop the possible causes from the left onto the correct issues on the right. Select and Place:

- A. Mastered
- B. Not Mastered

**Answer: A**

#### NEW QUESTION 8

```
Cisco VIC iSCSI, Boot Driver Version 2.0 (1w)
(C) 2010 Cisco Systems, Inc.
Initialize error 1
```

Refer to the exhibit. An engineer is configuring boot from iSCSI on a Cisco UCS B-Series Blade Server, but the LUN fails to mount. Which action resolves the issue?

- A. Statically configure the target information in the Boot Policy.
- B. Configure an MTU size of 9000 on the appliance port.
- C. Configure a QoS policy on the vNIC.
- D. Set a connection timeout value of 250 in the iSCSI Adapter Policy.

**Answer: A**

#### NEW QUESTION 9

An attempt to use a global vNIC redundancy template pair results in a service profile that fails to apply. Which action resolves the issues?

- A. Create the peer names before creating the templates.
- B. Assign the secondary template first, and then set the peer name.
- C. Assign both templates simultaneously.
- D. Assign the primary template first, and then set the peer name.

**Answer: D**

#### NEW QUESTION 10

An engineer must replace a failed memory on a Cisco UCS B-Series Blade Server. After the replacement was done, the server has a “resolve slot” warning. Which server maintenance action resolves the issue?

- A. Perform diagnostic interrupt on the server.
- B. Re-acknowledgement the server.
- C. Reset the server.
- D. Decomission the server.

**Answer: B**

#### NEW QUESTION 10

Cisco Unified Computing System Manager raises a critical error message that indicates that the system has overlapping Ethernet and FCoE VLANs. All of the Ethernet traffic on the overlapping VLANs drops. Which action resolves the issue?

- A. Modify the VLAN assignment to vNICs.
- B. Change the PIN groups on the vHBAs.
- C. Modify the FCoE VLAN.
- D. Set the FCoE VLAN as the native VLAN on server uplinks.

**Answer: A**

#### NEW QUESTION 11



```
leaf1# show interface ethernet 1/11
Ethernet1/11 is up (out-of-service)
admin state is up, Dedicated Interface
  Hardware: 1000/10000 Ethernet, address: e4aa/5d94.a2b5 (bia e4aa.5d94.a2b5)
  MTU 9000 bytes, BW 10000000 Kbit, DLY 1 usec
  reliability 255/255, txload 1/255, rxload 1/255
  Encapsulation ARPA, medium is broadcast
  Port mode is trunk
  full-duplex, 10 Gb/s, media type is 10G
  FEC (forward-error-correction) : disable-fec
  Beacon is turned off
  Auto-Negotiation is turned on
  Input flow-control is off, output flow-control is off
  Auto-mdix is turned off
  Rate mode is dedicated
  Switchport monitor is off
  EtherType is 0x8100
  EEE (efficient-ethernet) : n/a
  Last link flapped 4d06h
  Last clearing of "show interface" counters never
  1 interface resets
  30 seconds input rate 0 bits/sec, 0 packets/sec
  30 seconds output rate 0 bits/sec, 0 packets/sec
```

Refer to the exhibit. An engineer is performing a health check on ACI. Which statement about interface Ethernet 1/11 is true?

- A. The interface is working correctly and fully operational, but it is not in use.
- B. The interface policy is misconfigured.
- C. "out-of-service" is the default interface status in ACI.
- D. "out-of-service" indicates that no service graph is in use for this interface.

**Answer:** B

#### NEW QUESTION 14

An engineer is implementing a storage VDC, but fails. Which two prerequisites must be in place before a storage VDC is implemented? (Choose two.)

- A. M-Series module
- B. ESSENTIALS license
- C. STORAGE-ENT license
- D. FCoE license
- E. F-Series module

**Answer:** DE

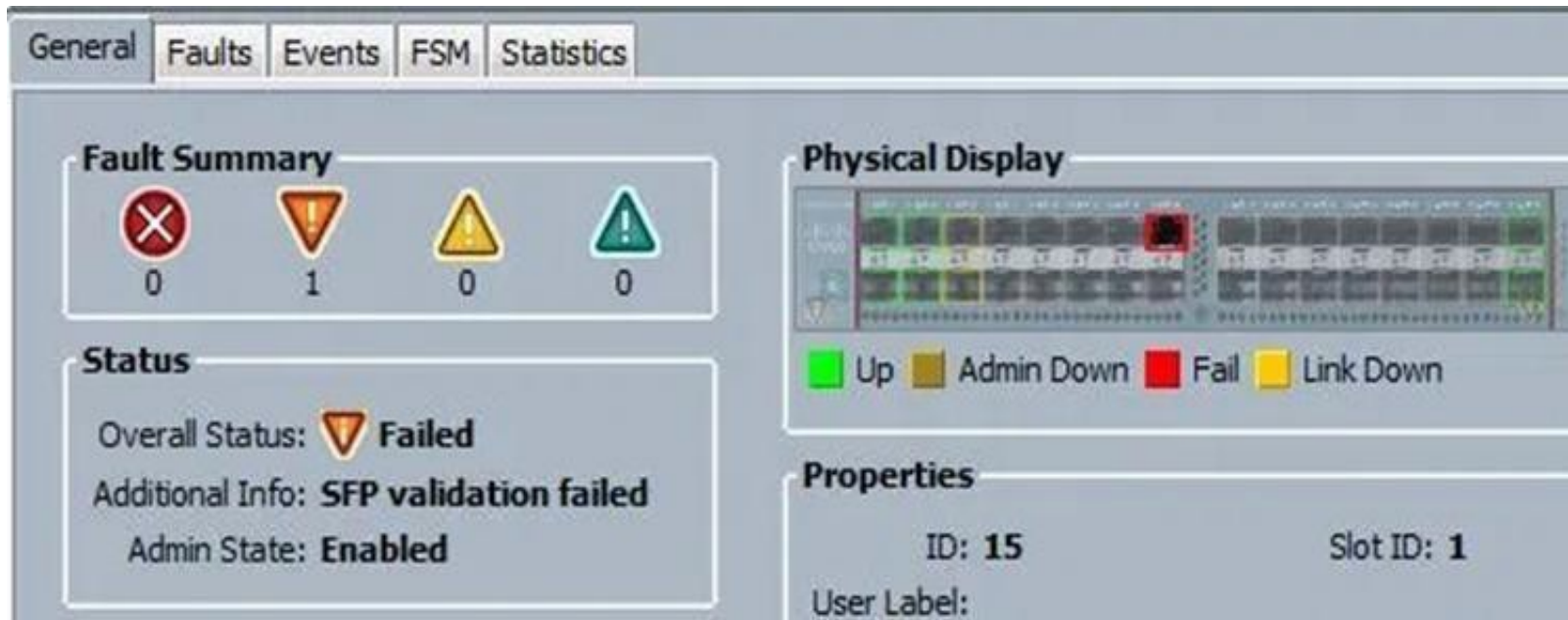
#### NEW QUESTION 17

Refer to the exhibit. A new Cisco Nexus 5548 Switch connects to a network. SAN switching is configured on the switch. The switch fc2/10 NP uplink is shown in the exhibit. Which action ensures that fc2/10 is in an up state?

- A. Replace the SFP port module in fc2/10.
- B. Configure the admin port type E on the upstream switch that connects the port.
- C. Enable NPIV on the upstream switch that connects the port.
- D. Configure the BB\_credit buffers on the upstream switch that connects the port.

**Answer:** C

#### NEW QUESTION 19



Refer to the exhibit. When an engineer inserts 8-Gb FC SFP port 15 on a Cisco UCS Fabric Interconnect, the port fails. What is a possible cause of the issue?

- A. Port 15 is configured as an Ethernet port.
- B. Port 15 is configured for 4-Gb FC.
- C. Port 15 is missing a license.
- D. The polarity of the fiber cable is reversed.

**Answer: B**

#### NEW QUESTION 20

An engineer discovers that an NPV/NPIV uplink experiences a heavy load and plans to add more uplinks. Which statement about what occurs when the new uplinks are added is true?

- A. Only new connections use the new uplinks automatically.
- B. Paths must be defined before new connections can use the new uplinks.
- C. All connections must be reset before the new uplinks can be used.
- D. New and existing connections use the new uplinks automatically.

**Answer: D**

#### NEW QUESTION 22

An engineer is troubleshooting a failed DCBX exchange between a server and a Cisco Nexus switch. Which action allows DCBX to successfully negotiate?

- A. Enable ETS
- B. Enable PFC.
- C. Enable Cisco Discovery Protocol.
- D. Enable LLDP.

**Answer: D**

#### NEW QUESTION 25

```
FC0001# show zone active
zone name hba1_VN0001 vsan 3201
  fcid 0x970209 [pwwn 50:ab:0b:00:00:c2:8f:de]
* fcid 0x970102 [pwwn 20:ba:00:a0:98:3b:6f:d8]

zone name hba1_VN0002 vsan 3201
* fcid 0x970200 [pwwn 50:ab:0b:00:00:c2:8a:67]
  fcid 0x9700c2 [pwwn 20:ba:00:a0:98:3b:61:99]
```

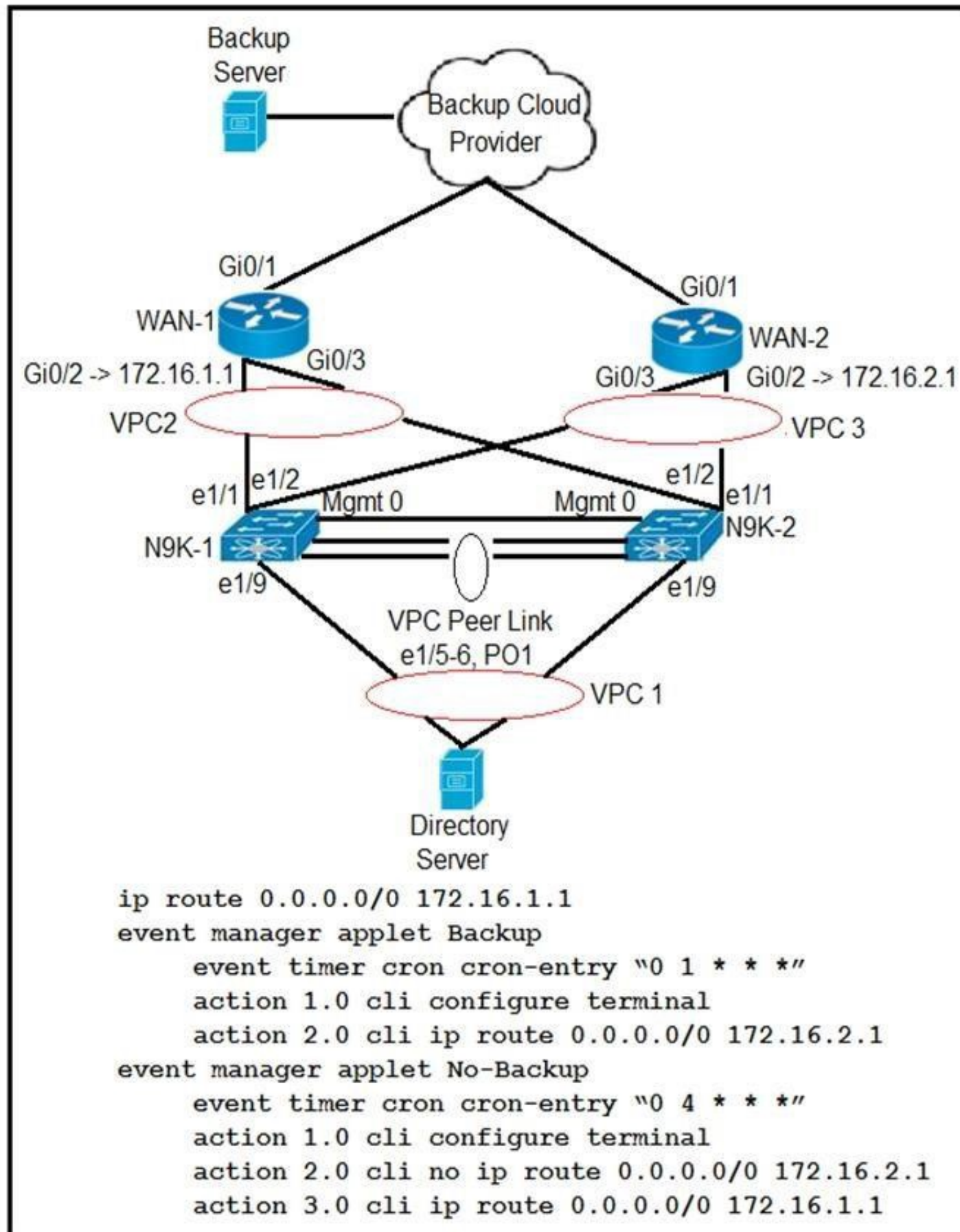
Refer to the exhibit. The initiator that has FC ID 0x970102 fails to communicate with the target that has FC ID 0x970200. What action resolves the issue?

- A. Reconfigure the initiator and the target to be in the same zones.
- B. Reactivate the zoneset.
- C. Reset the port for FC ID 0x970102 and FC ID 0x970200 to log in to the fabric.
- D. Reset the port for FC ID 0x970209 and FC ID 0x9700c2 to log in to the fabric.

**Answer: B**

#### NEW QUESTION 26





Refer to the exhibit. Partial configuration from N9K-1 and N9K-2 is included. The client has two WANs connected. WAN-1 is for normal business-day activities. WAN-2 is for server backups during nonworking hours of 1:00 a.m. to 5:00 a.m. daily. The client says that at the scheduled time for backup, the data center server failed to use the WAN-2 link to back up the servers to the cloud backup system. What is the solution to this problem?

- A. The event timer must be written in epoch time format.
- B. The Cisco Nexus switch must be configured with one applet because a configuration with two applets will fail.
- C. The Cron entry must be configured without double quotes.
- D. The applet called "Backup" must include an action to remove the current static route.

**Answer: D**

#### NEW QUESTION 27

```

switch# guestshell resize cpu 4
Note: System CPU share will be resized on Guest shell enable
  
```

Refer to the exhibit. After the configuration is performed, guestshell continues to use 2%CPU. Which action resolves the issue?

- A. Resync the database
- B. Recreate the guestshell
- C. Reboot the guestshell
- D. Reboot the switch

**Answer: C**

#### NEW QUESTION 28

A server administrator attempts to change the Cisco IMC KVM certificate to one signed by a private CA, but the certificate is not being accepted. What can cause this process to fail?

- A. using a certificate with a password-protected private key
- B. RSA encryption being used in the generation of the certificate.
- C. AES encryption being used in the generation of the certificate.
- D. public IP address of the Cisco IMC not being included in the SAN.

**Answer:** A

#### NEW QUESTION 31

An IOM fails during a firmware upgrade and is unresponsive. Which action recovers the module?

- A. Restore UCSM configuration from backup.
- B. Roll back to the previous firmware.
- C. Use AutoInstall to reinstall the firmware.
- D. From the peer IOM, reset the faulty module.

**Answer:** B

#### NEW QUESTION 33

```
N5k-A-199# sh install all impact system
N5000-uk9.7.1.4.N1.1.bin kickstart
N5000-uk9-kickstart.7.3.4.N1.1.bin
Verifying image bootflash:/n5000-uk9-
kickstart.7.3.4.N1.1.bin for boot
variable "kickstart".
[#####] 100% -- SUCCESS
Verifying image bootflash:/n5000-
uk9.7.1.4.N1.1.bin for boot variable
"system".
[# ] 0% -- FAIL. Return code 0x4045001F
(image MD5 checksum error).
Install has failed. Image verification
failed (0x40930011)
```

Refer to an exhibit. An engineer is troubleshooting an upgrade failure on a switch. Which action resolves the issue?

- A. Save the system image in NVRAM.
- B. Use the same system image as the kickstart image.
- C. Load a new system image.
- D. Reload the same system image.

**Answer:** C

#### NEW QUESTION 36

.....



## Thank You for Trying Our Product

### We offer two products:

1st - We have Practice Tests Software with Actual Exam Questions

2nd - Questions and Answers in PDF Format

### 300-615 Practice Exam Features:

- \* 300-615 Questions and Answers Updated Frequently
- \* 300-615 Practice Questions Verified by Expert Senior Certified Staff
- \* 300-615 Most Realistic Questions that Guarantee you a Pass on Your First Try
- \* 300-615 Practice Test Questions in Multiple Choice Formats and Updates for 1 Year

**100% Actual & Verified — Instant Download, Please Click**  
**[Order The 300-615 Practice Test Here](#)**