

70-741 Dumps

Networking with Windows Server 2016

<https://www.certleader.com/70-741-dumps.html>



NEW QUESTION 1

Your network contains an Active Directory domain named contoso.com. The domain contains two servers named Server1 and Server2 that run Windows Server 2016. Server1 has IP Address Management (IPAM) installed. Server2 has the DHCP Server role installed. The IPAM server retrieves data from Server2. You create a domain user account named User1. You need to ensure that User1 can use IPAM to manage DHCP. Which command should you run on Server1? To answer, select the appropriate options in the answer area.

Answer Area

▼

net localgroup

Set-AdGroup

▼

User1 /add

"Server1\IPAM IP Audit Administrators"

"Server1\IPAM IP Users"

"Server1\IPAM MSM Administrators"

"Server2\Administrators"

"Server2\DHCP Administrators"

- A. Mastered
- B. Not Mastered

Answer: A

Explanation:

Answer Area

▼

net localgroup

Set-AdGroup

▼

User1 /add

"Server1\IPAM IP Audit Administrators"

"Server1\IPAM IP Users"

"Server1\IPAM MSM Administrators"

"Server2\Administrators"

"Server2\DHCP Administrators"

NEW QUESTION 2

Note: This question is part of a series of questions that present the same scenario. Each question in the series contains a unique solution that might meet the stated goals. Some question sets might have more than one correct solution, while others might not have a correct solution. After you answer a question in this sections, you will NOT be able to return to it. As a result, these questions will not appear in the review screen. You have a server named Server1 that has the Network Policy and Access Services server role installed. You create a Shared Secret Network Policy Server (NPS) template named Template1. You need to view the shared secret string used for Template1. Solution: From Windows PowerShell, you run Get-NpsSharedSecretTemplate -Name Template1. Does this meet the goal?

- A. Yes
- B. No

Answer: B

NEW QUESTION 3

You use a Network Policy Server (NPS) server named NPS1 to authenticate VPN connections and connections to wireless access points (WAPs). You plan to add a new WAP named WAP1. What should you do on WAP1 and NPS1? To answer, select the appropriate options in the answer area. NOTE: Each correct selection is worth one point.

Setting to configure on WAP1:

	▼
802.1X certificate	
Encryption protocol	
RADIUS server	
SSID	

Object to create on NPS1:

	▼
a connection request policy	
a network policy	
a RADIUS client	
a remote RADIUS server group	

- A. Mastered
- B. Not Mastered

Answer: A

Explanation:

References:

<https://docs.microsoft.com/en-us/windows-server/networking/core-network-guide/cncg/wireless/e-wireless-acce>

NEW QUESTION 4

You have a server named Server1 that runs Windows Server 2016. You need to configure Server1 as a multitenant RAS Gateway. What should you install on Server1?

- A. the Network Controller server role
- B. the Data Center Bridging feature
- C. the Remote Access server role
- D. the Network Policy and Access Services server role

Answer: C

NEW QUESTION 5

You have a server named Server1 that runs Windows Server 2016 and is configured as a domain controller.

You install the DNS Server server role on Server1.

You plan to store a DNS zone in a custom Active Directory partition. You need to create a new Active Directory partition for the zone. What should you use?

- A. Set-DnsServer
- B. DNS Manager
- C. New-ADObject
- D. Ntdsutil.exe
- E. Active Directory Sites and Services

Answer: B

Explanation:

References:

<https://www.businessnewsdaily.com/11019-set-up-configure-dns-on-windows-server-2016.html>

NEW QUESTION 6

You have a Hyper-V host named Host1 that runs Windows Server 2016 Datacenter. Host1 has eight network adapters that support Remote Direct Memory Access (RDMA).

You plan to configure Host1 as part of a four-node Hyper-V converged solution. You enable the Data Center Bridging (DCB) feature.

You need to enable Switch Embedded Teaming (SET) and RDMA.

Which three cmdlets should you run in sequence? To answer move the appropriate cmdlets from the list of cmdlets to the answer area and arrange them in the correct order.

Cmdlets

Add-VMNetworkAdapter
Enable-NetAdapterRDMA
Install-WindowsFeature
Set-NetAdapterRss
New-VMSwitch



- A. Mastered
- B. Not Mastered

Answer: A

Explanation:

Cmdlets

Add-VMNetworkAdapter
Enable-NetAdapterRDMA
Install-WindowsFeature
Set-NetAdapterRss
New-VMSwitch



New-VMSwitch
Add-VMNetworkAdapter
Enable-NetAdapterRDMA

NEW QUESTION 7

Note: This question is part of a series of questions that present the same scenario. Each question in the series contains a unique solution that might meet the stated goals. Some question sets might have more than one correct solution, while others might not have a correct solution.

After you answer a question in this sections, you will NOT be able to return to it. As a result, these questions will not appear in the review screen.

Your network contains an Active Directory domain named adatum.com. The domain contains two DHCP servers named Server1 and Server2.

Server1 has the following IP configuration.


```
PS C:\> Get-DhcpServerv4Scope | fl ScopeId, SubnetMask, StartRange, EndRange, ActivatePolicies ; Get-DhcpServerSetting
```

```
ScopeId          : 172.16.0.0
SubnetMask        : 255.255.0.0
StartRange        : 172.16.0.20
EndRange          : 172.16.0.100
ActivatePolicies  : True
```

```
IsDomainJoined    : True
IsAuthorized       : False
DynamicBootp      : True
RestoreStatus      : False
ConflictDetectionAttempts : 0
NpsUnreachableAction : Full
NapEnabled         : False
ActivatePolicies   : True
```

Server2 has the following IP configuration.

```
PS C:\> Get-DhcpServerv4Scope | fl ScopeId, SubnetMask, StartRange, EndRange, ActivatePolicies ; Get-DhcpServerSetting
```

```
ScopeId          : 172.16.0.0
SubnetMask        : 255.255.0.0
StartRange        : 172.16.0.80
EndRange          : 172.16.0.150
ActivatePolicies  : True
```

```
IsDomainJoined    : True
IsAuthorized       : False
DynamicBootp      : True
RestoreStatus      : False
ConflictDetectionAttempts : 3
NpsUnreachableAction : Full
NapEnabled         : False
ActivatePolicies   : True
```

Some users report that sometimes they cannot access the network because of conflicting IP addresses. You need to configure DHCP to avoid leasing addresses that are in use already.

Solution: On Server1, you modify the ActivatePolicies setting of the scope. Does this meet the goal?

- A. Yes
- B. No

Answer: B

NEW QUESTION 8

You have multiple subnets.

On one of the subnets, you install a server named Server1 that runs Windows Server 2016. Server1 has the following IPv6 addresses:

- ▶ ff00:e378:8000::63bf:3fff: added2
- ▶ fe80::200:5aee:feaa:20a2
- ▶ fc00:fd8:f53b:82e4::53
- ▶ 2000:1516::6c:2348

Which IPv6 address is used when Server1 communicates with different hosts? To answer, select the appropriate options in the answer area.

Answer Area

When Server1 connects to Internet hosts, the following IP address is used:

	▼
ff00:e378:8000::63bf:3fff:fdd2	

fe80::200:5aee:feaa:20a2	
fc00:fdf8:f53b:82e4::53	
2000:1516::6c:2348	

When Server1 connects to hosts on the same subnet, the following IP address is used:

	▼
ff00:e378:8000::63bf:3fff:fdd2	

fe80::200:5aee:feaa:20a2	
fc00:fdf8:f53b:82e4::53	
2000:1516::6c:2348	

- A. Mastered
- B. Not Mastered

Answer: A

Explanation:

References: [https://technet.microsoft.com/pt-pt/library/cc757359\(v=ws.10\).aspx](https://technet.microsoft.com/pt-pt/library/cc757359(v=ws.10).aspx)

NEW QUESTION 9

You are deploying a small network that has 30 client computers. The network uses the 192.168.1.0/24 address space. All computers obtain IP configurations from a DHCP server named Server1.

You install a server named Server2 that runs Windows Server 2016. Server2 has two network adapters named internal and Internet. Internet connects to an Internet service provider (ISP) and obtains the 131.107.0.10 IP address. Internal connects to the internal network and is configured to use the 192.168.1.250 IP address.

You need to provide Internet connectivity for the client computers. What should you do?

- A. On Server2, select the Internet and Internal network adapters and bridge the connection
- B. From the DHCP console on Server1, authorize Server2.
- C. On Server1, stop the DHCP serve
- D. On the Internal network adapter on Server 2, enable Internet Connection Sharing (ICS).
- E. On Server2 run the New-NetNat -Name NAT1 -InternalIPInterfaceAddressPrefix 192.168.1.0/24 cmdle
- F. Configure Server1 to provide the 003 Router option of 131.107.0.10.
- G. Install the Routing role service on Server2 and configure the NAT routing protoco
- H. Configure Server1 to provide the 003 Router option of 192.168.1.250.

Answer: C

NEW QUESTION 10

You have two DNS servers named Server1 and Server2.

All client computers run Windows 10 and are configured to use Server1 for DNS name resolution. Server2 hosts a primary zone named contoso.com.

Your network recently experienced several DNS spoofing attacks on the contoso.com zone. You need to prevent further attacks from succeeding.

What should you do on Server??

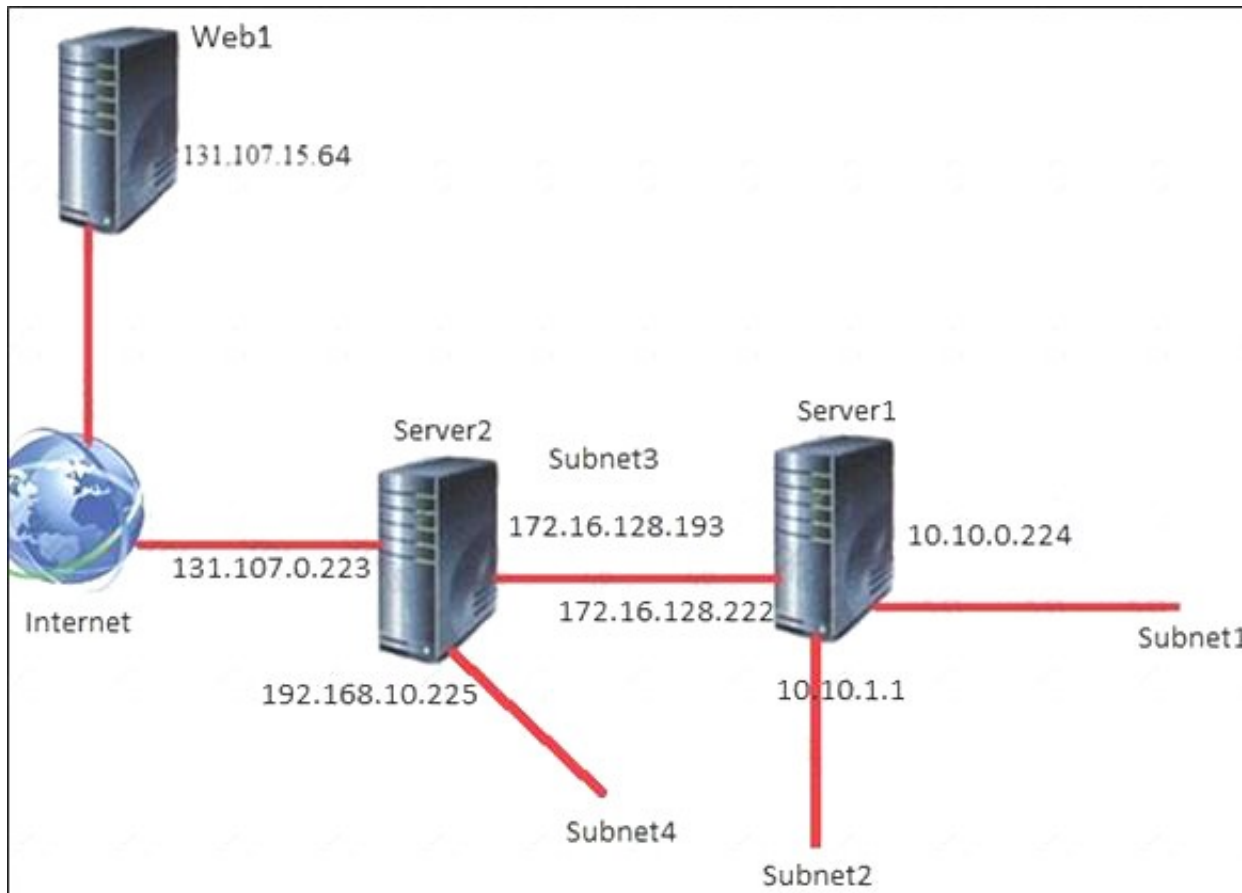
- A. Configure the contoso.com zone to be Active Directory-integrated.
- B. Sign the contoso.com zone.
- C. Configure DNS-based Authentication of Named Entities (DANE) for the contoso.com zone.
- D. Configure Response Rate Limiting (RRL).

Answer: B

NEW QUESTION 10

Scenario:

You are a network administrator for a company named Contoso,Ltd. The network is configured as shown in the exhibit.



You install the Remote Access server role on Server2. Server2 has the following configured.

*Network address translation (NAT)

*The DHCP Server server role

The Security Policy of Contoso states that only TCP ports 80 and 443 are allowed from the internet to server2 You identify the following requirements:

* Add 28 devices to subnet2 for a temporary project.

* Configure Server2 to accept VPN connections from the internet.

* Ensure that devices on Subnet2 obtain TCP/IP settings from DHCP on Server2.

End of Scenario:

You deploy a computer named Computer8 to subnet4. Computer8 has an IP address of 192.168.10.230 and a subnet mask of 255.255.255.240

What is the broadcast address for Subnet4? To answer, select the appropriate options in the answer area.

192.168.

	▼
0	
10	
255	

.

	▼
0	
192	
225	
239	
255	

- A. Mastered
B. Not Mastered

Answer: A

Explanation:

192.168.

	▼
0	
10	
255	

.

	▼
0	
192	
225	
239	
255	

NEW QUESTION 12

Note: This question is part of a series of questions that present the same scenario. Each question in the series contains a unique solution that might meet the stated goals. Some question sets might have more than one correct solution, while others might not have a correct solution.

After you answer a question in this sections, you will NOT be able to return to it. As a result, these questions will not appear in the review screen.

You have a server named Server1 that has the Network Policy and Access Services server role installed. You create a Shared Secret Network Policy Server (NPS) template named Template1.

You need to view the shared secret string used for Template1.

Solution: From the Network Policy Server console, you export the templates, and you view the exported XML file.

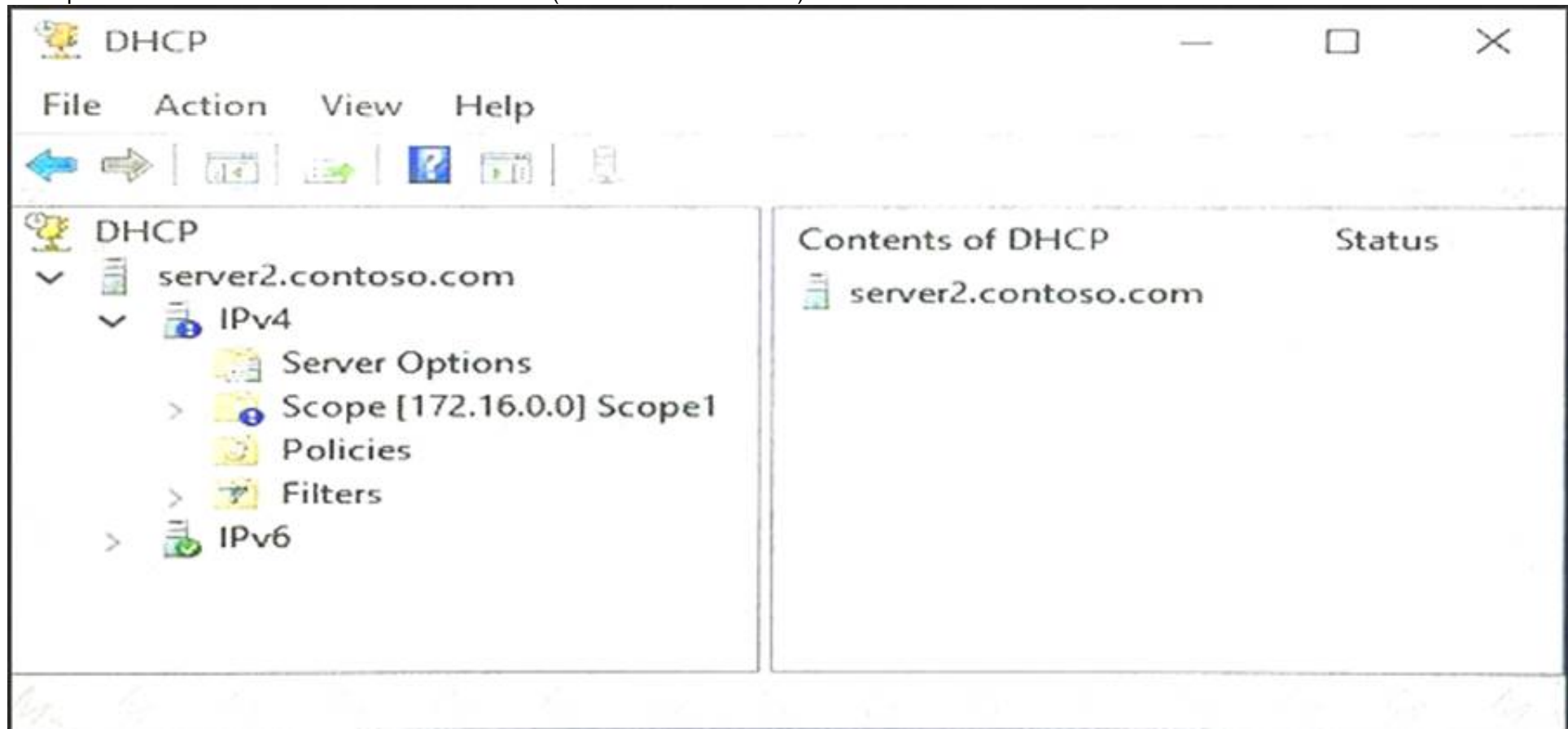
Does this meet the goal?

- A. Yes
B. No

Answer: B

NEW QUESTION 15

Note: This question is part of a series of questions that present the same scenario. Each question in the series contains a unique solution that might meet the stated goals. Some question sets might have more than one correct solution, while others might not have a correct solution.
After you answer a question in this sections, you will NOT be able to return to it. As a result, these questions will not appear in the review screen.
You network contains an Active Directory domain named contoso.com. The domain contains a DHCP server named Server2 than runs Windows Server 2016. Users report that their client computers fail to obtain an IP address.
You open the DHCP console as shown in the Exhibit. (Click the Exhibit button.)



Scope1 has an address range of 172.16.0.10 to 172.16.0.100 and a prefix length of 23 bits.

You need to ensure that all of the client computers on the network can obtain an IP address from Server2. Solution: You run the Repair-DhcpServerv4IPRecord cmdlet.

Does this meet the goal?

- A. Yes
- B. No

Answer: B

Explanation:

<https://technet.microsoft.com/itpro/powershell/windows/dhcp-server/set-dhcpserverv4scope>

NEW QUESTION 20

You have a Hyper-V host named Server1 that runs Windows Server 2016. Server1 connects to your corporate network. The Corporate network uses the 10.10.0.0/16 address space.

Server1 hosts a virtual machine named VM1, VM1 is configured to have an IP addresses of 172.16.1.54/16. You need to ensure that VM1 can access the resources on the corporate network.

What should you do? To answer, select the appropriate options in the answer area.

Connect VM1 to:		▼
	an external virtual switch	
	an internal virtual switch	
	a private virtual switch	

On Server1, run:		▼
	Add-VMNetworkAdapterRoutingDomainMapping	
	Netsh.exe	
	New-NetNat	
	Route.exe	

- A. Mastered
- B. Not Mastered

Answer: A

Explanation:

Connect VM1 to:		▼
	an external virtual switch	
	an internal virtual switch	
	a private virtual switch	

On Server1, run:		▼
	Add-VMNetworkAdapterRoutingDomainMapping	
	Netsh.exe	
	New-NetNat	
	Route.exe	

NEW QUESTION 25

Note: This question is part of a series of questions that use the same or similar answer choices. An answer choice may be correct for more than one question in the series. Each question is independent of the other questions in this series. Information and details provided in a question apply only to that question.

You have a DHCP server named Server1 that has three network cards. Each network card is configured to use a static IP address.

You need to prevent all client computers that have physical address beginning with 98-5F from leasing an IP address from Server1.

What should you do?

- A. From the properties of Scope1, modify the Conflict detection attempts setting.
- B. From the properties of Scope1, configure Name Protection.
- C. From the properties of IPv4, configure the bindings.
- D. From IPv4, create a new filter.
- E. From the properties of Scope1, create an exclusion range.
- F. From IPv4, run the DHCP Policy Configuration Wizard.
- G. From Control Panel, modify the properties of Ethernet.
- H. From Scope1, create a reservation.

Answer: E

Explanation:

[https://technet.microsoft.com/en-us/library/ee941125\(v=ws.10\).aspx](https://technet.microsoft.com/en-us/library/ee941125(v=ws.10).aspx)

NEW QUESTION 29

You have a remote access server named Server1 that runs Windows Server 2016. Server1 has DirectAccess enabled.

You have a proxy server named Server2. All computers on the internal network connect to the Internet by using the proxy.

On Server1, you run the command Set-DAClient -forceTunnel Enabled.

You need to ensure that when a DirectAccess client connects to the network, the client accesses all the Internet resources through the proxy.

What should you run on Server1?

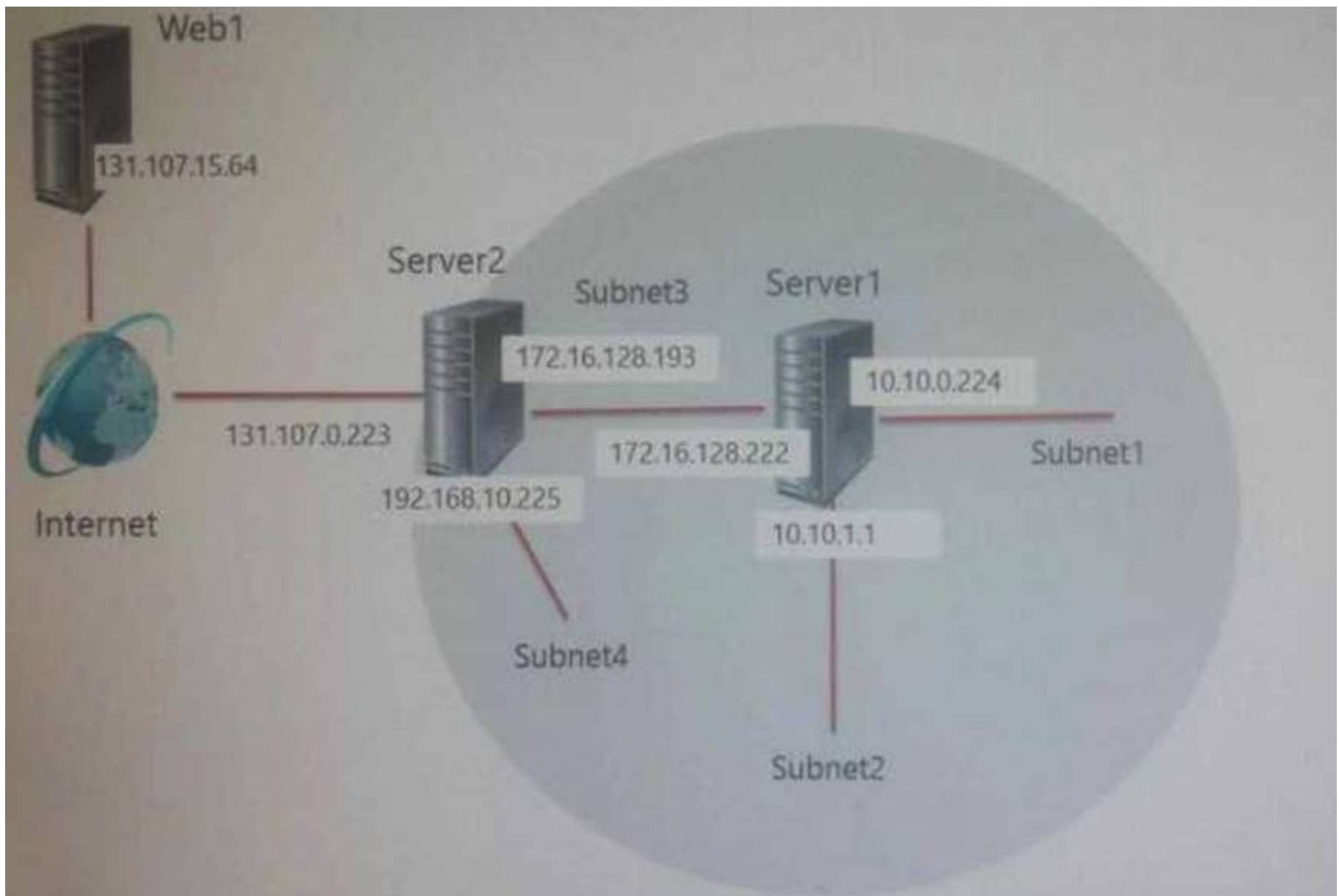
- A. Set-DnsClientGlobalSetting
- B. Set-DAEntryPoint
- C. Set-DnsClientNrptRule
- D. Set-DnsClientNrptGlobal

Answer: B

NEW QUESTION 32

Scenario:

You are a network administrator for a company named Contoso,Ltd. The network is configured as shown in the exhibit.



You install the Remote Access server role on Server2. Server2 has the following configured.

*Network address translation (NAT)

*The DHCP Server server role

The Security Policy of Contoso states that only TCP ports 80 and 443 are allowed from the internet to server2 You identify the following requirements:

* Add 28 devices to subnet2 for a temporary project.

* Configure Server2 to accept VPN connections from the internet.

* Ensure that devices on Subnet2 obtain TCP/IP settings from DHCP on Server2.

End of Scenario:

You add a computer to subnet1. The computer has an IP address of 10.10.0.129

Web1 receives a request from the new computer and sends a response. What should you do?

- A. 10.10.0.129
- B. 10.10.0.224
- C. 131.107.0.223
- D. 172.16.128.222

Answer: C

NEW QUESTION 34

Note: This question is part of a series of questions that present the same scenario. Each question in the series contains a unique solution that might meet the stated goals. Some question sets might have more than one correct solution, while others might not have a correct solution.

After you answer a question in this sections, you will NOT be able to return to it. As a result, these questions will not appear in the review screen.

Your network contains an Active Directory domain named adatum.com. The domain contains two DHCP servers named Server1 and Server2.

Server1 has the following IP configuration.

```
PS C:\> Get-DhcpServerv4Scope | fl ScopeId, SubnetMask, StartRange, EndRange, ActivatePolicies ; Get-DhcpServerSetting
```

```
ScopeId           : 172.16.0.0
SubnetMask         : 255.255.0.0
StartRange         : 172.16.0.20
EndRange           : 172.16.0.100
ActivatePolicies   : True
```

```
IsDomainJoined     : True
IsAuthorized        : False
DynamicBootp       : True
RestoreStatus       : False
ConflictDetectionAttempts : 0
NpsUnreachableAction : Full
NapEnabled          : False
ActivatePolicies    : True
```

Server2 has the following IP configuration.

```
PS C:\> Get-DhcpServerv4Scope | fl ScopeId, SubnetMask, StartRange, EndRange, ActivatePolicies ; Get-DhcpServerSetting
```

```
ScopeId           : 172.16.0.0
SubnetMask         : 255.255.0.0
StartRange         : 172.16.0.80
EndRange           : 172.16.0.150
ActivatePolicies   : True
```

```
IsDomainJoined     : True
IsAuthorized        : False
DynamicBootp        : True
RestoreStatus       : False
ConflictDetectionAttempts : 3
NpsUnreachableAction : Full
NapEnabled          : False
ActivatePolicies    : True
```

Some users report that sometimes they cannot access the network because of conflicting IP addresses. You need to configure DHCP to avoid leasing addresses that are in use already.

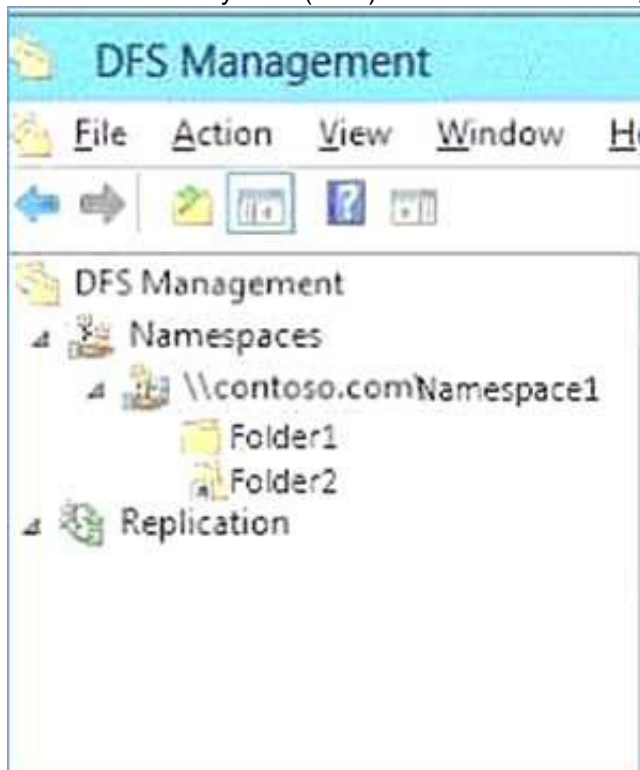
Solution: On Server1, you modify the EndRange IP address of the scope. Does this meet the goal?

- A. Yes
- B. No

Answer: A

NEW QUESTION 39

Your network contains an Active Directory forest named contoso.com. The forest has three sites named Site1, Site2 and Site3. Distributed File System (DFS) for the forest is configured as shown in the exhibit.



The forest contains a server named Server2 that hosts the DFS namespace.

\\Contoso.com\Namespace1\Folder2 has the following configuration.

```
Destination           :
NamespacePath          : \\contoso.com\namespace1\folder2
TimeToLive              : 1800
PSComputerName          :
CimClass                : Root/Microsoft/Windows/dfs:MSFT_DfsNamespaceFolder
CimInstanceProperties    : (Description, Flags, NamespacePath, State...)
CimSystemProperties      : Microsoft.Management.Infrastructure.CimSystemProperties
```

\\Contoso\Namespace1\Folder2 has the targets configured as shown in the following table.

Path	Site	Referral status
\\Server1\Folder2	Site1	True
\\Server2\Folder2	Site2	False
\\Server3\Folder2	Site2	True

For each of the following statement, Select Yes if Statement is true. Otherwise, select No.

Answer Area

Statements	Yes	No
If users from Site1 connect to \\contoso.com\Namespace\Folder2, the users will always be redirected to Server1.	<input type="radio"/>	<input type="radio"/>
If users from Site2 connect to \\contoso.com\Namespace\Folder2, the users will be redirected to either Server2 or Server3.	<input type="radio"/>	<input type="radio"/>
If users from Site3 connect to \\contoso.com\Namespace\Folder2, the users will be redirected to either Server1, Server2, or Server3.	<input type="radio"/>	<input type="radio"/>

- A. Mastered
- B. Not Mastered

Answer: A

Explanation:

Answer Area

Statements	Yes	No
If users from Site1 connect to \\contoso.com\Namespace\Folder2, the users will always be redirected to Server1.	<input checked="" type="radio"/>	<input type="radio"/>
If users from Site2 connect to \\contoso.com\Namespace\Folder2, the users will be redirected to either Server2 or Server3.	<input type="radio"/>	<input checked="" type="radio"/>
If users from Site3 connect to \\contoso.com\Namespace\Folder2, the users will be redirected to either Server1, Server2, or Server3.	<input type="radio"/>	<input checked="" type="radio"/>

NEW QUESTION 40

You have a network policy server (NPS) server named NPS1. One network policy is enabled on NPS1. The policy is configured as shown in the following exhibit.

Conditions – If the following conditions are met:

Condition	Value
Day and time restrictions	Monday 08:00-18:00 Tuesday 08:00-18:00 Wednesday 08:00-18:00 Thursday 08:00-18:00 Friday 08:00-18:00
Windows Groups	DEMO\Protected Users OR DEMO\Domain Admins

Use the drop-down menus to select the answer choice that completes each statement based on the information in the graphic.

Answer Area

If a user is only a member of the Domain Users group, the policy [answer choice].

	▼
applies to the user on weekdays between 08:00 and 18:00 applies to the user on weekdays between 18:00 and 08:00 applies to the user on weekends between 08:00 and 18:00 never applies to the user	

If the policy applies to a user who is a member of the Protected Users group, the user can use [answer choice] to be authenticated.

	▼
a password a static IP address a virtual smart card	

- A. Mastered
- B. Not Mastered

Answer: A

Explanation:

Answer Area

If a user is only a member of the Domain Users group, the policy [answer choice].

	▼
applies to the user on weekdays between 08:00 and 18:00 applies to the user on weekdays between 18:00 and 08:00 applies to the user on weekends between 08:00 and 18:00 never applies to the user	

If the policy applies to a user who is a member of the Protected Users group, the user can use [answer choice] to be authenticated.

	▼
a password a static IP address a virtual smart card	

NEW QUESTION 45

Note: This question is part of a series of questions that present the same scenario. Each question in the series contains a unique solution. Determine whether the solution meets the stated goals.

Refer to exhibit:

Private1	Private
Internal1	Internal
External1	External

Server1 has two virtual machines named VM1 and VM that run Windows Server 2016. VM1 connects to Private VM2 has two network adapters.

You need to ensure that VM1 connects to the corporate network by using NAT.

Solution: You connect VM2 to private1 and External1. You install the Remote Access Server role on VM2, and you configure NAT in the Routing and Remote Access console. You configure VM1 to use VM2 as the default gateway.

Does this meet the goal?

- A. Yes
- B. No

Answer: A

NEW QUESTION 48

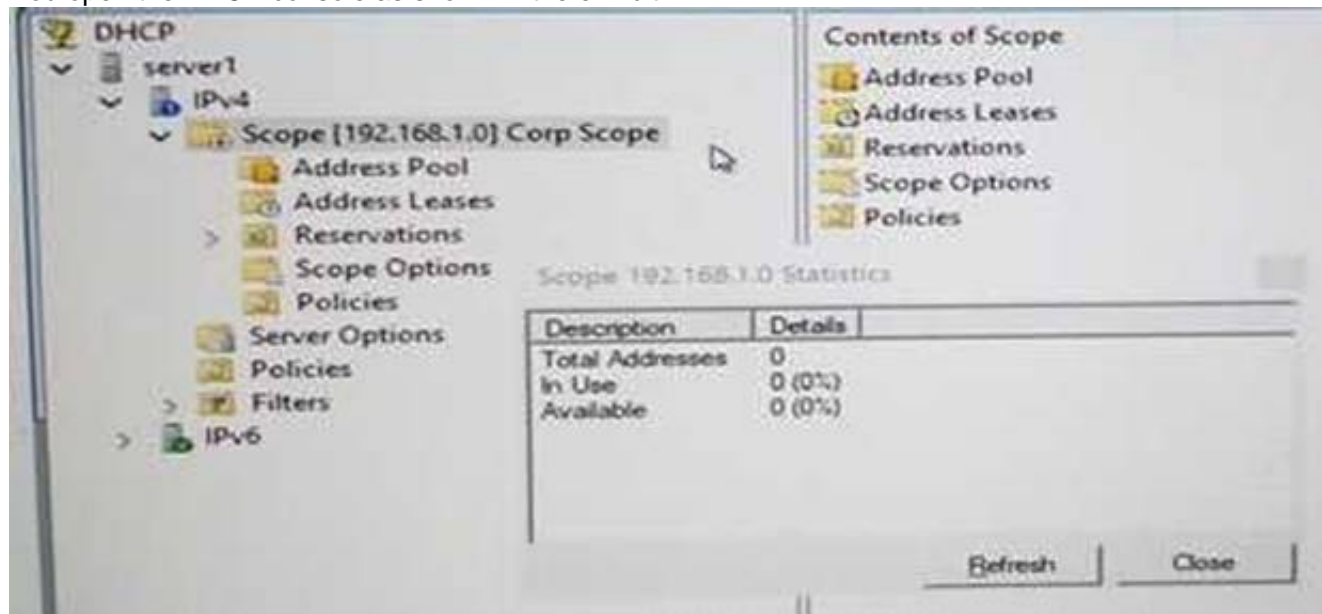
Note: This question is part of a series of questions that present the same scenario. Each question in the series contains a unique solution that might meet the stated goals. Some question sets might have more than one correct solution, while others might not have a correct solution.

After you answer a question in this sections, you will NOT be able to return to it. As a result, these questions will not appear in the review screen.

You network contains an Active Directory domain named contoso.com. The domain contains a DHCP server named Server1. All client computers run Windows 10 and are configured as DHCP clients.

Your helpdesk received calls today from users who failed to access the network from their Windows 10 computer.

You open the DHCP console as shown in the exhibit.



You need to ensure that all of the Windows 10 computers can receive a DHCP lease.

Solution: You authorize the server. Does this meet the goal?

- A. Yes
- B. No

Answer: B

NEW QUESTION 50

You have two servers named Server1 and Server2 that run Windows Server 2016. Both servers have the DHCP Server server role installed. Server1 has a DHCP scope named Scope1. Server2 has a DHCP scope named Scope2. You need to ensure that client computers can get an IP address if a single DHCP server fails. You must be able to control the percentage of requests to which each DHCP server responds during normal network operations. What should you do?

- A. Add Server1 and Server2 as nodes in a failover cluster, and then configure the DHCP Server server role.
- B. Add Server1 and Server2 as nodes in a failover cluster, and then configure the quorum mode.
- C. On Server1 and Server2, configure DHCP failover for Scope1 and Scope2.
- D. Add Server1 and Server2 as nodes in a failover cluster, and then configure port rules for UDP 67 and UDP 68.

Answer: C

NEW QUESTION 53

You company has a main office in London. The company has 1,000 users who are located in many countries. You plan to deploy a large remote access solution for the company. The London office has three servers named Server1, Server2, and Server3 that run Windows Server 2016. You plan to use Server1 as a VPN server, Server2 as a RADIUS proxy, and Server3 as a RADIUS server. You need to configure Server2 to support the planned deployment. Which three actions should you perform on Server2? Each correct answer presents part of the solution.

- A. Create a connection request policy.
- B. Deploy a Windows container.
- C. Add a RADIUS client.
- D. Create a network policy.
- E. Create a remote RADIUS server group.

Answer: ACE

Explanation:

<https://ittrainingday.com/2014/01/03/how-to-configure-radius-proxy-servers/>

NEW QUESTION 55

Your network contains an Active Directory forest named contoso.com. The functional level of the forest is Windows Server 2012. The forest contains five domain controllers and five VPN servers that run Windows Server 2016. Five hundred users connect to the VPN servers daily. You need to configure a new server named Server1 as a RADIUS server. What should you do first?

- A. On Server1, deploy the Remote Access server role.
- B. On Server1, deploy the Network Policy and Access Services role.
- C. On a domain controller, set the forest functional level to Windows Server 2016.
- D. On each VPN server, run the New-NpsRadiusClient cmdlet.

Answer: B

Explanation:

<http://www.nyazit.com/configure-network-policy-server-2016/>

NEW QUESTION 56

You have a remote access server named Server1 that runs Windows Server 2016. Server1 has DirectAccess enabled. You have a proxy server named Server2. All computers on the internal network connect to the Internet by using the proxy. On Server1, you run the command Set-DAClient -forceTunnel Enabled. You need to ensure that when a DirectAccess client connects to the network, the client accesses all the Internet resources through the proxy. What should you run on Server1?

- A. Set-DnsClientNrptRule
- B. Set.DANetworkLocationServer
- C. Set-DAClient
- D. Set-DAServer

Answer: C

NEW QUESTION 57

You have a server named Server1 that runs Windows Server 2016. Server1 is an IP Address Management (IPAM) server that collects DHCP and DNS logs and events for your entire network. You need to get the IP addresses that were assigned to a client computer named Computer1 during the last week. What should you do on Server1?

- A. Open Event Viewer and click Windows Log
- B. Filter the Security log for Computer1.
- C. From the IPAM node in Server Manager, click Event Catalog, and then review the IP Address Tracking.
- D. Run the Get-IpamDhcpConfigurationEvent cmdlet.
- E. Open Event Viewer and click Windows Log
- F. Filter the Forwarded Events log for Computer1.

Answer: C

Explanation:

References:

<https://docs.microsoft.com/en-us/powershell/module/ipamserver/get-ipamipaddressauditevent?view=win10-ps>

NEW QUESTION 59

You have an IP Address Management (IPAM) server named IPAM1 that runs Window Server 2016. IPAM1 manages all of the DHCP servers on your network. You are troubleshooting an issue for a client that fails to receive an IP address from DHCP. You need to ensure that from IPAM1, you can view all of the event data for the DHCP leases from the last 24 hours. Solution: From Windows PowerShell, you run the Set-IpamDHCPsServer cmdlet. Does this meet the goal?

- A. Yes
- B. No

Answer: B

NEW QUESTION 63

You have an IP Filters Network Policy Server (NPS) template that is used by an NPS policy. The IP filters are configured as shown in the following exhibit.

Use the drop-down menus to select the answer choice that completes each statement based on the information presented in the graphic.
NOTE: each correct selection is worth one point.

Answer Area

[answer choice] packets destined for a server that has an IP address of 172.16.55.11 and a subnet mask of 255.255.255.0 will be allowed to connect to port 443.

	▼
All TCP UDP	

TCP packets destined for a server that has an IP address of 192.168.10.100 and a subnet mask of 255.255.0.0 will be [answer choice].

	▼
allowed to connect to any port allowed to connect to port 443 only rejected	

- A. Mastered
- B. Not Mastered

Answer: A

Explanation:

Answer Area

[answer choice] packets destined for a server that has an IP address of 172.16.55.11 and a subnet mask of 255.255.255.0 will be allowed to connect to port 443.

	▼
All	
TCP	
UDP	

TCP packets destined for a server that has an IP address of 192.168.10.100 and a subnet mask of 255.255.0.0 will be [answer choice].

	▼
allowed to connect to any port	
allowed to connect to port 443 only	
rejected	

NEW QUESTION 67

You have a DHCP server named Server1 that runs Windows Server 2016. You have a single IP subnet. Server1 has an IPv4 scope named Scope1. Scope1 has an IP address range of 10.0.1.10 to 10.0.1.200 and a length of 24 bits. You need to create a second logical IP network on the subnet. The subnet will use an IP address range of 10.1.2.10 to 10.0.2.200 and a length of 24 bits. What should you do?

- A. Create a second scope, and then create a superscope.
- B. Create a superscope, and then configure an exclusion range in Scope1.
- C. Create a new scope, and then modify the IPv4 bindings.
- D. Create a second scope, and then run the DHCP Split-Scope Configuration Wizard.

Answer: A

NEW QUESTION 69

You have a server named Server1 that runs Windows Server 2016 and is configured as a domain controller. You install the DNS Server server role on Server1. You plan to store a DNS zone in a custom Active Directory partition. You need to create a new Active Directory partition for the zone. What should you use?

- A. Set-DnsServer
- B. Active Directory Sites and Services
- C. Dns.exe
- D. Dnscmd.exe

Answer: D

Explanation:

[https://technet.microsoft.com/en-us/library/ee649181\(v=ws.10\).aspx](https://technet.microsoft.com/en-us/library/ee649181(v=ws.10).aspx)

NEW QUESTION 70

You have a server named Server1 that has a Server Core installation of Windows Server 2016. Server1 is configured to obtain an IP address automatically. You need to configure the IPv4 address, netmask, and default gateway manually for a network interface named Ethernet on Server1. What should you run?

- A. ipconfig.exe
- B. netsh.exe
- C. Set-NetNat
- D. Set-NetIPv4Protocol

Answer: C

NEW QUESTION 72

Note: This question is part of a series of questions that present the same scenario. Each question in the series contains a unique solution that might meet the stated goals. Some question sets might have more than one correct solution, while others might not have a correct solution.

After you answer a question in this sections, you will NOT be able to return to it. As a result, these questions will not appear in the review screen.

Your network contains an Active Directory forest named contoso.com. The forest has three sites located in London, Paris, and Berlin.

The London site contains a web server named Web1 that runs Windows Server 2016.

You need to configure Web1 as an HTTP content server for the hosted cache servers located in the Paris and Berlin sites.

Solution: You install the Static Content role service, and then you restart the IIS Admin Service. Does this meet the goal?

- A. Yes
- B. No

Answer: B

NEW QUESTION 74

Note: This question is part of a series of questions that use the same scenario. For your convenience, the scenario is repeated in each question. Each question presents a different goal and answer choices, but the text of the scenario is exactly the same in each question in this series.

Your network contains an Active Directory domain named contoso.com. The functional level of the domain is Windows Server 2012.

The network uses an address space of 192.168.0.0/16 and contains multiple subnets. The network is not connected to the Internet.

The domain contains three servers configured as shown in the following table.

Server name	Configuration
Server1	Domain controller and DNS server
Server2	Member server
Server3	DHCP server

Client computers obtain TCP/IP settings from Server3.

You add a second network adapter to Server2. You connect the new network adapter to the Internet. You install the Routing role service on Server2.

Server1 has four DNS zones configured as shown in the following table.

DNS zone name	Type	Zone file name
Contoso.com	Active Directory-integrated	None
Fabrikam.com	Primary	Fabrikam.com.dns
Tailspintoys.com	Primary	Tailspintoys.com.dns
168.192.in-addr.arpa	Primary	168.192.in-addr.arpa.dns

What should you do to enable Server2 as a NAT server?

- A. From Routing and Remote Access, add an interface.
- B. From Windows PowerShell, run the New-RoutingGroupConnector cmdlet.
- C. From Routing and Remote Access, add a routing protocol.
- D. From Windows PowerShell, run the Install-WindowsFeature cmdlet.

Answer: A

Explanation:

[https://technet.microsoft.com/en-us/library/dd469812\(v=ws.11\).aspx](https://technet.microsoft.com/en-us/library/dd469812(v=ws.11).aspx)

NEW QUESTION 76

You install the DHCP Server role on a server1. You create a new scope on Server1. The scope properties are configured as shown in the following exhibit.

The screenshot shows the 'Scope [192.168.213.0] myScope Properties' dialog box with the 'General' tab selected. The 'Scope' icon is visible. The configuration is as follows:

- Scope name: myScope
- Start IP address: 192 . 168 . 213 . 6
- End IP address: 192 . 168 . 213 . 11
- Subnet mask: 255 . 255 . 255 . 0 (Length: 24)
- Lease duration for DHCP clients:
 - ☒ Limited to:
 - Days: 8
 - Hours: 0
 - Minutes: 0
 - ☐ Unlimited
- Description: (empty text box)

Buttons at the bottom: OK, Cancel, Apply.

Use the drop down menus to select the answer choice that completes each statement based on the information presented in the graphics.

If a DHCP client requests an IP address from Server1, the client will [answer choice].

	▼
fail to receive an IP address	
receive an IP address of 192.168.213.1	
receive an IP address of 192.168.213.6	

If a client computer that runs Windows 10 receives an IP address from myScope, the first attempt to renew the lease will be in [answer choice] days.

	▼
two	
four	
six	
eight	

- A. Mastered
- B. Not Mastered

Answer: A

Explanation:

If a DHCP client requests an IP address from Server1, the client will [answer choice].

	▼
fail to receive an IP address	
receive an IP address of 192.168.213.1	
receive an IP address of 192.168.213.6	

If a client computer that runs Windows 10 receives an IP address from myScope, the first attempt to renew the lease will be in [answer choice] days.

	▼
two	
four	
six	
eight	

NEW QUESTION 78

You have a server named Server1 that runs Windows Server 2016.

You need to deploy the first cluster node of a Network Controller cluster.

Which four cmdlets should you run in sequence? To answer, move the appropriate cmdlets from the list of cmdlets to the answer area and arrange them in the correct order.

Cmdlets

Install-NetworkControllerCluster

Enable-NetworkControllerNode

New-NetworkControllerNodeObject

Install-WindowsFeature

Install-NetworkController

Answer Area



- A. Mastered
- B. Not Mastered

Answer: A

Explanation:

Deploy Network Controller using Windows PowerShell Step 1: Install-WindowsFeature

Install the Network Controller server role

To install Network Controller by using Windows PowerShell, type the following commands at a Windows PowerShell prompt, and then press ENTER.

Install-WindowsFeature -Name NetworkController -IncludeManagementTools Step 2: New-NetworkControllerNodeObject

You can create a Network Controller cluster by creating a node object and then configuring the cluster.

You need to create a node object for each computer or VM that is a member of the Network Controller cluster.

To create a node object, type the following command at the Windows PowerShell command prompt, and then press ENTER. Ensure that you add values for each parameter that are appropriate for your deployment.

New-NetworkControllerNodeObject -Name <string> -Server <String> -FaultDomain <string> -RestInte Step 3: Install-NetworkControllerCluster

To configure the cluster, type the following command at the Windows PowerShell command prompt, and then press ENTER. Ensure that you add values for each parameter that are appropriate for your deployment.

Install-NetworkControllerCluster -Node <NetworkControllerNode[]> -ClusterAuthentication ... Step 4: Install-NetworkController

To configure the Network Controller application, type the following command at the Windows PowerShell command prompt, and then press ENTER. Ensure that you add values for each parameter that are appropriate for your deployment.

Install-NetworkController -Node <NetworkControllerNode[]> -ClientAuthentication References: <https://technet.microsoft.com/en-us/library/mt282165.aspx>

NEW QUESTION 81

Note: This question is part of a series of questions that present the same scenario. Each question in the series contains a unique solution that might meet the stated goals. Some question sets might have more than one correct solution, while others might not have a correct solution.

After you answer a question in this sections, you will NOT be able to return to it. As a result, these questions will not appear in the review screen.

You have an IP Address Management (IPAM) server named IPAM1 that runs Windows Server 2016. IPAM1 manages all of the DHCP servers on your network.

You are troubleshooting an issue for a client that fails to receive an IP address from DHCP.

You need to ensure that from IPAM1, you can view all of the event data for the DHCP leases from the last 24 hours.

Solution: From Task Scheduler, you run the Microsoft\Windows\IPAM\Audit task. Does this meet the goal?

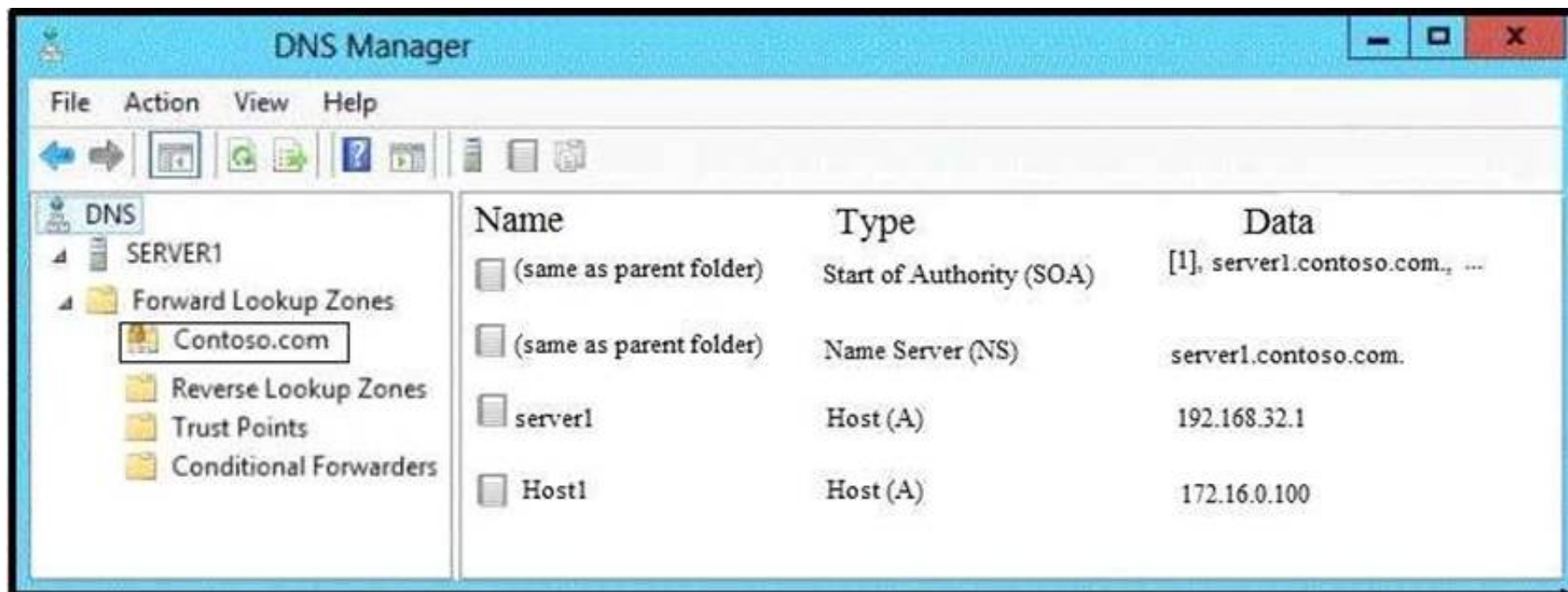
- A. Yes
- B. No

Answer: B

NEW QUESTION 82

You have a DNS server named Server1 that runs Windows Server 2016. Server 1 has a forward lookup scope for Contoso.com. The records in the zone are shown in the exhibit. (Click the Exhibit button.)

Exhibit:



You run the following commands on Server1.

```
Add-DnsServerClientSubnet -Name "Subnet1" -IPv4Subnet "172.16.0.0/24"

Add-DnsServerClientSubnet -Name "Subnet2" -IPv4Subnet "172.16.1.0/24"

Add-DnsServerZoneScope -ZoneName "Contoso.com" -Name "Scope1"

Add-DnsServerResourceRecord -ZoneName "Contoso.com" -A -Name "Host2"

-IPv4Address "172.16.99.99" -ZoneScope "Scope1"

Add-DnsServerQueryResolutionPolicy -Name "Policy1" -Action ALLOW

-ClientSubnet "EQ,Subnet1" -ZoneScope "Scope1,1" -ZoneName "Contoso.com"

Add-DnsServerQueryResolutionPolicy -Name "Policy2" -Action IGNORE

-ClientSubnet "NE,Subnet2" -FQDN "EQ,host1.contoso.com"
```

What are two results of the configuration? Each correct answer presents a complete solution. NOTE: Each correct selection is worth one point.

- A. When a client computer that has an IP address of 172.16.0.10 attempts to resolve host1.contoso.com, host1.contoso.com resolves to 172.16.99.99.
- B. When a client computer that has an IP address of 172.16.0.10 attempts to resolve host1.contoso.com, the name resolution fails to return an IP address.
- C. When a client computer that has an IP address of 172.16.1.56 attempts to resolve host1.contoso.com, host1.contoso.com resolves to 172.16.99.99.
- D. When a client computer that has an IP address of 172.16.1.56 attempts to resolve host1.contoso.com, host1.contoso.com resolves to 172.16.0.100.
- E. When a client computer that has an IP address of 172.16.1.56 attempts to resolve host1.contoso.com, the name resolution fails to return an IP address.
- F. When a client computer that has an IP address of 172.16.0.10 attempts to resolve host1.contoso.com, host1.contoso.com resolves to 172.16.0.100.

Answer: BE

Explanation:

References:

<https://docs.microsoft.com/en-us/powershell/module/dnsserver/add-dnsserverqueryresolutionpolicy?view=win1>

NEW QUESTION 86

You have a server named Server1 that runs Windows Server 2016.

Server1 has two network cards. One network card connects to your internal network and the other network card connects to the Internet.

You plan to use Server1 to provide Internet connectivity for client computers on the internal network. You need to configure Server1 as a network address translation (NAT) server.

Which server role or role service should you install on Server1 first?

- A. Network Controller
- B. Web Application Proxy
- C. Routing
- D. DirectAccess and VPN (RAS)

Answer: C

NEW QUESTION 87

Note: This question is part of a series of questions that present the same scenario. Each question in the series contains a unique solution that might meet the stated goals. Some questions sets might have more than one correct solutions, while others might not have a correct solution.

After you answer a question in this section, you will NOT be able to return to it. As a result, these questions will not appear in the review screen.

Your network contains an Active Directory forest named contoso.com. The forest has three sites located in London, Paris and Berlin.

The London site contains a web server named Web1 that runs Windows Server 2016.

You need to configure Web1 as an HTTP content server for the hosted cache servers located in the Paris and Berlin sites.

Solution: You install the BranchCache feature, and then you start the BranchCache service. Does this meet the goal?

- A. Yes
- B. No

Answer: A

NEW QUESTION 92

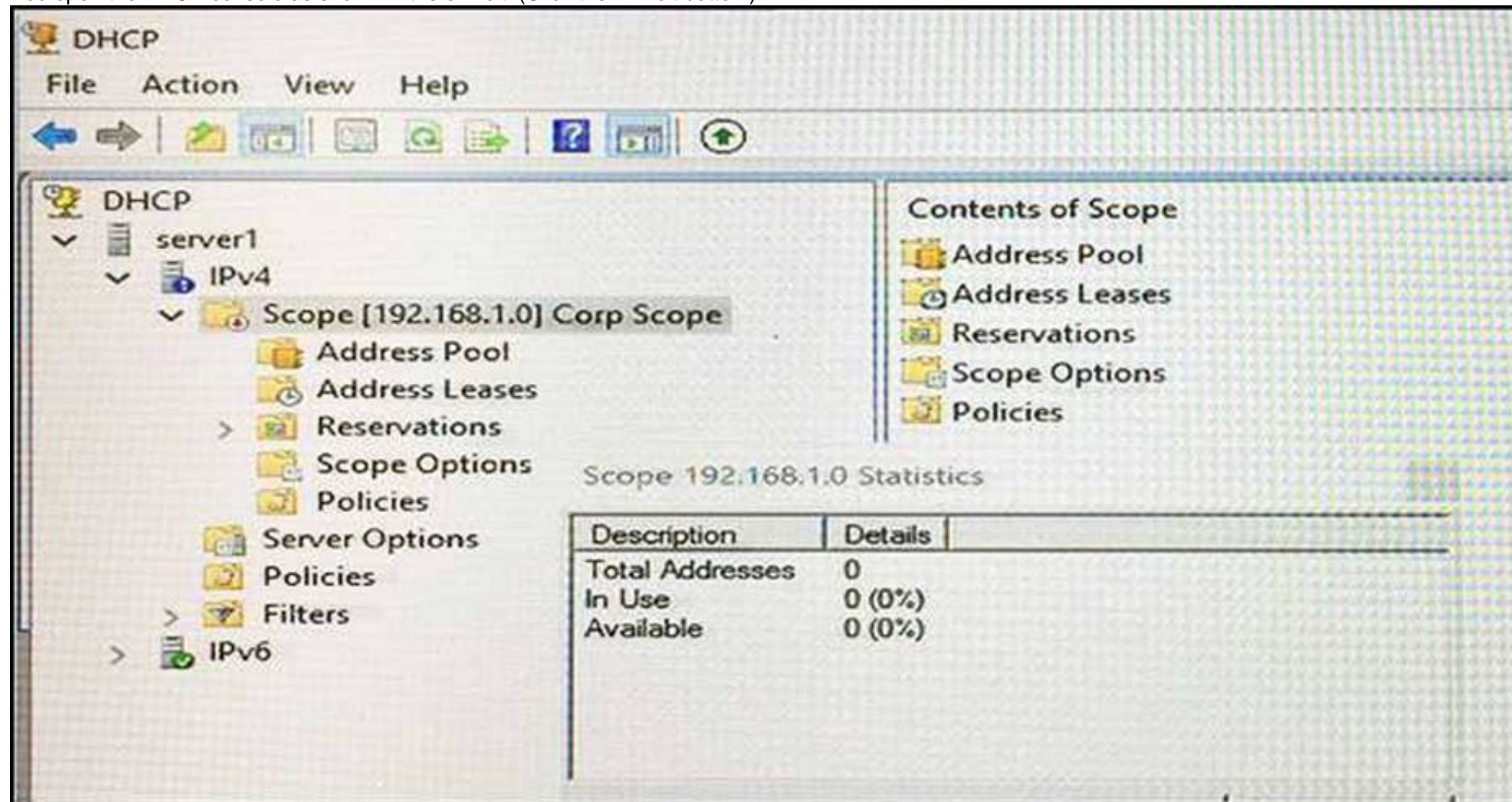
Note: This question is part of a series of questions that present the same scenario. Each question in the series contains a unique solution that might meet the stated goals. Some question sets might have more than one correct solution, while others might not have a correct solution.

After you answer a question in this sections, you will NOT be able to return to it. As a result, these questions will not appear in the review screen.

You network contains an Active Directory domain named contoso.com. The domain contains a DHCP server named Server1. All client computers run Windows 10 and are configured as DHCP clients.

Your helpdesk received calls today from users who failed to access the network from their Windows 10 computer.

You open the DHCP console as shown in the exhibit. (Click the Exhibit button.)



You need to ensure that all of the Windows 10 computers can receive a DHCP lease. Solution: You activate the scope. Does this meet the goal?

- A. Yes
- B. No

Answer: A

Explanation:

[https://technet.microsoft.com/en-us/library/dd183581\(v=ws.10\).aspx](https://technet.microsoft.com/en-us/library/dd183581(v=ws.10).aspx)

NEW QUESTION 96

You are implementing a secure network. The network contains a DHCP server named Server1 that runs Windows Server 2016.

You create a DHCP allow filter that contains all of the computers on the network that are authorized to receive IP addresses.

You discover that unauthorized computers can receive an IP address from Server1.

You need to ensure that only authorized computers can receive an IP address from Server1. Solution: You run the following command.

Set-DhcpServerv4FilterList -ComputerName Server1 -Allow False -Deny True Does this meet the goal?

- A. Yes
- B. No

Answer: B

Explanation:

References:

<https://docs.microsoft.com/en-us/powershell/module/dhcpserver/add-dhcpserverv4filter?view=win10-ps>

NEW QUESTION 98

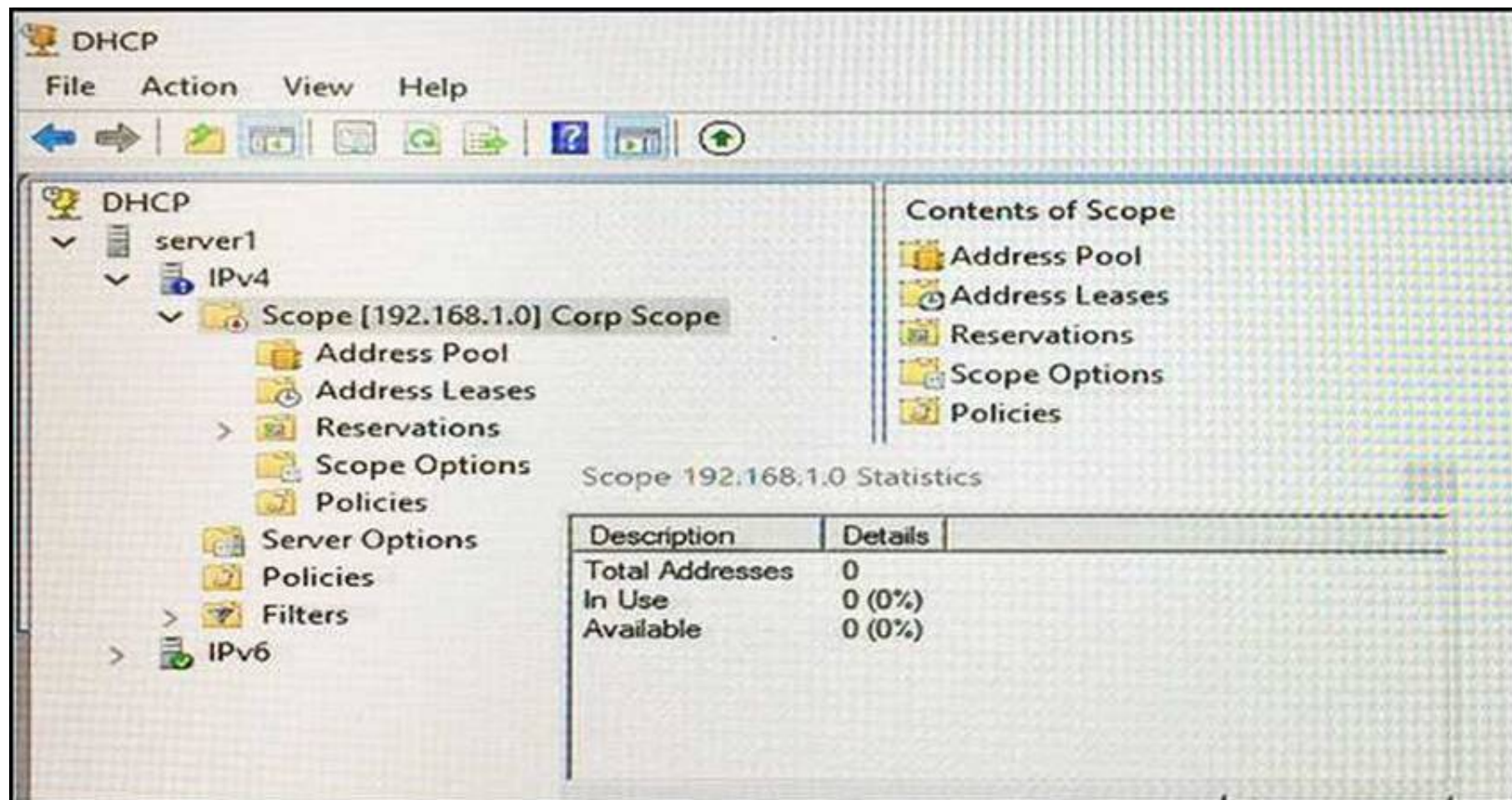
Note: This question is part of a series of questions that present the same scenario. Each question in the series contains a unique solution that might meet the stated goals. Some question sets might have more than one correct solution, while others might not have a correct solution.

After you answer a question in this sections, you will NOT be able to return to it. As a result, these questions will not appear in the review screen.

You network contains an Active Directory domain named contoso.com. The domain contains a DHCP server named Server1. All client computers run Windows 10 and are configured as DHCP clients.

Your helpdesk received calls today from users who failed to access the network from their Windows 10 computer.

You open the DHCP console as shown in the exhibit. (Click the Exhibit button.)



You need to ensure that all of the Windows 10 computers can receive a DHCP lease. Solution: You start the DHCP Server service. Does this meet the goal?

- A. Yes
- B. No

Answer: B

Explanation:

[https://technet.microsoft.com/en-us/library/dd183581\(v=ws.10\).aspx](https://technet.microsoft.com/en-us/library/dd183581(v=ws.10).aspx)

NEW QUESTION 101

Your network contains an Active Directory domain named contoso.com. The domain contains a domain-based Distributed File System (DFS) namespace named Namespace1 that has access-based enumeration enabled. Namespace1 has a folder named Folder1. Folder1 has a target of \\Server1\Folder1. The permissions for folder1 are configured as shown in the following table.

Account name	Permission type	Permission
User1	NTFS	None
User1	Share	Change
User1	DFS	Read
User2	NTFS	Read
User2	Share	Full control
User2	DFS	None

Access-based enumeration is disabled for the share of Folder1.

You need to ensure that both User1 and User2 can see Folder1 when they access \\Contoso.com\NameSpace1. What should you do?

- A. Disable access-based enumeration for Namespace1.
- B. Run the Set-DfsnFolder cmdlet.
- C. Run the Set-DfsFolderTarget cmdlet.
- D. Deny User1 the read DFS permission to Folder1.

Answer: A

NEW QUESTION 106

Your company owns the public Internet IP address range of 131.107.20.0 to 131.107.20.255.

You need to create a subnet that supports four hosts. The solution must minimize the number of addresses available to the subnet.

Which subnet should you use?

- A. 131.107.20.16 with subnet mask 255.255.255.248
- B. 131.107.20.16/28
- C. 131.107.20.0/27
- D. 131.107.20.16/30

Answer: A

NEW QUESTION 111

You have a server named Server1 that has a Server Core installation of Windows Server 2016. Server1 is configured to obtain an IP address automatically. You need to configure the IPv4 address, netmask, and default gateway manually for a network interface named Ethernet on Server1. What should you run?

- A. ipconfig.exe
- B. New-NetIPAddress
- C. Set-NetAdapter
- D. Set-NetIPv4Protocol

Answer: B

Explanation:

References:

<https://docs.microsoft.com/en-us/powershell/module/nettcpip/new-netipaddress?view=win10-ps>

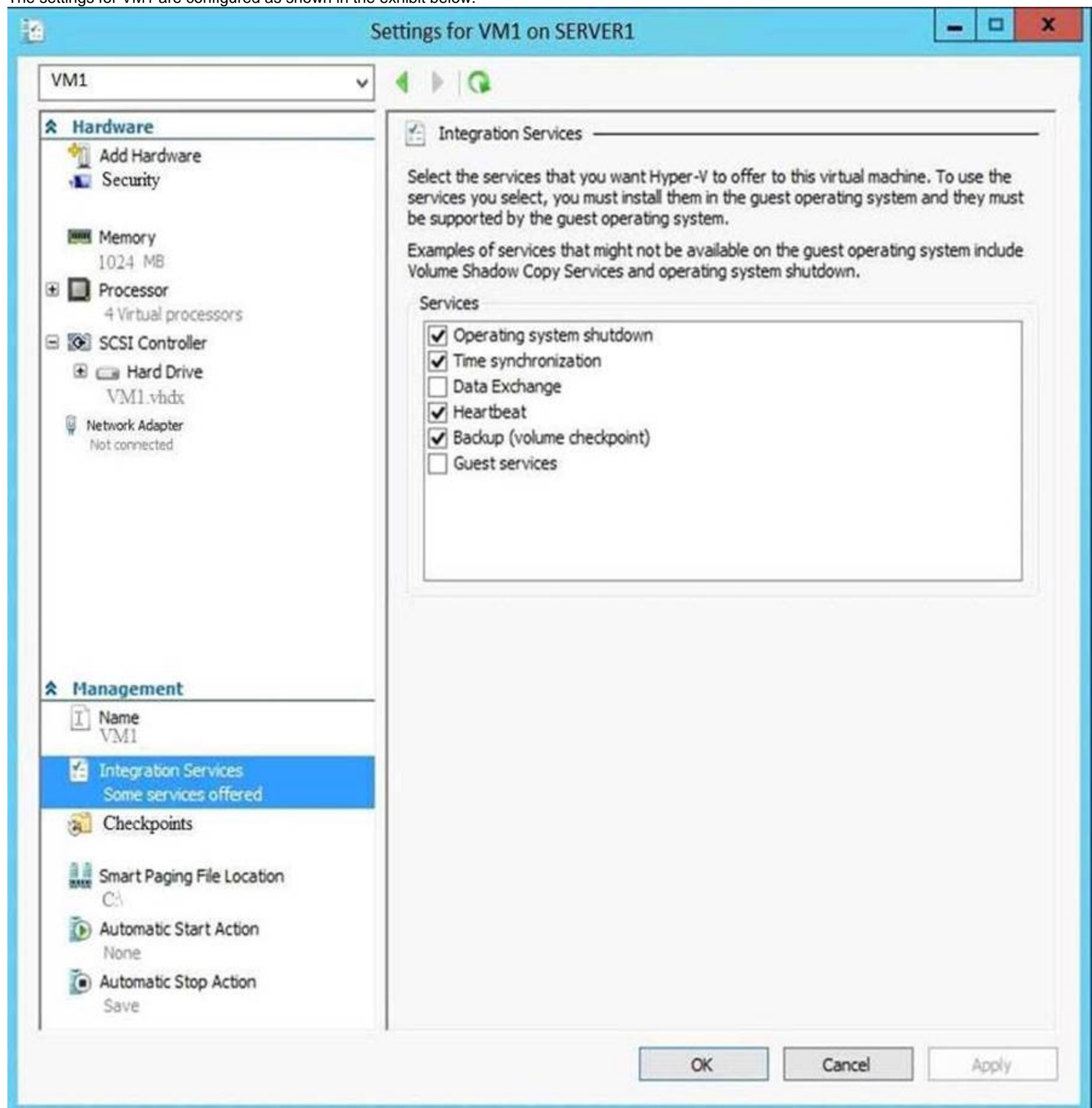
NEW QUESTION 116

Note: This question is part of a series of questions that present the same scenario. Each question in the series contains a unique solution that might meet the stated goals. Some question sets might have more than one correct solution, while others might not have a correct solution.

After you answer a question in this sections, you will NOT be able to return to it. As a result, these questions will not appear in the review screen.

You have a Hyper-V host named Server1 that hosts a virtual machine named VM1. Server1 and VM1 run Windows Server 2016.

The settings for VM1 are configured as shown in the exhibit below.



You need to ensure that you can use the Copy-VMFile cmdlet on Server1 to copy files from VM1.

Solution: You need to enable the Guest Service integration service for VM1. Does this meet the goal?

- A. YES
B. NO

Answer: A

NEW QUESTION 120

You have a DirectAccess Server that is accessible by using the name `directaccess.fabrikam.com`. On the DirectAccess server, you install a new server certificate that has a subject name of

`directaccess.contoso.com`, and then you configure DNS records for `directaccess.contoso.com`

You need to change the endpoint name for DirectAccess to `directaccess.contoso.com`

What command should you run? To answer, select the appropriate options in the answer area.

	▼
Set-DaClient	
Set-DaEntryPoint	
Set-DaServer	

	▼
-ComputerName	
-ConnectToAddress	
-EntrypointName	

`directaccess.contoso.com`

- A. Mastered
B. Not Mastered

Answer: A

Explanation:

	▼
Set-DaClient	
Set-DaEntryPoint	
Set-DaServer	

	▼
-ComputerName	
-ConnectToAddress	
-EntrypointName	

`directaccess.contoso.com`

NEW QUESTION 125

Note: This question is part of a series of questions that present the same scenario. Each question in the series contains a unique solution. Determine whether the solution meets the stated goals.

Refer to exhibit:

Private1	Private
Internal1	Internal
External1	External

Server1 has two virtual machines named VM1 and VM that run Windows Server 2016. VM1 connects to Private VM2 has two network adapters.

You need to ensure that VM1 connects to the corporate network by using NAT.

Solution: You connect VM2 to private1 and External1. You run the `New-NetNatIpAddress` and the `New-NetNat` cmdlets on VM2. You configure VM1 to use VM2 as the default gateway.

Does this meet the goal?

- A. Yes
B. No

Answer: B

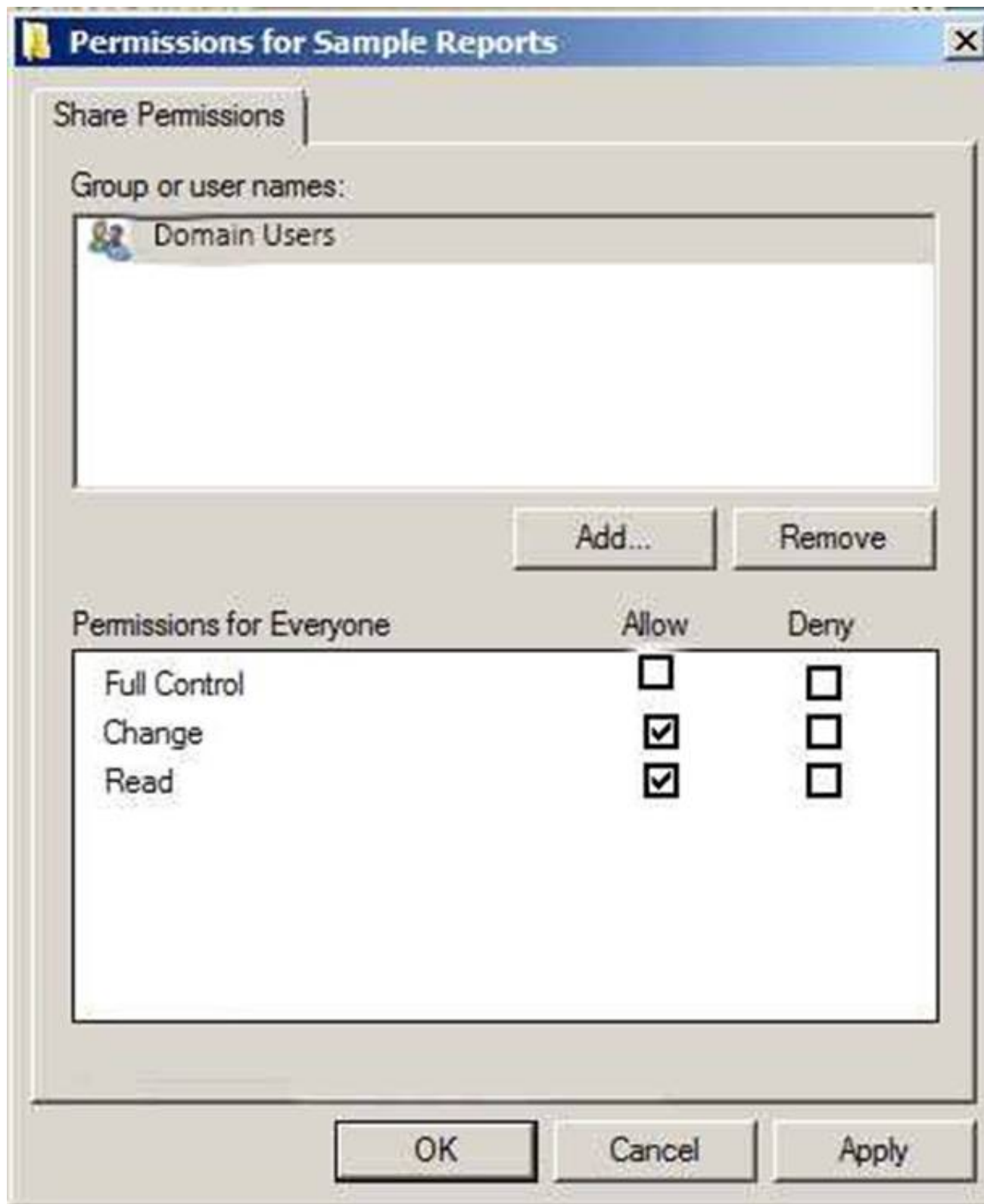
NEW QUESTION 129

Your network contains an Active Directory domain named `adatum.com`. The domain contains two servers named Server1 and Server2 that run Windows Server 2016. The domain contains three users named User1, User 2 and User 3.

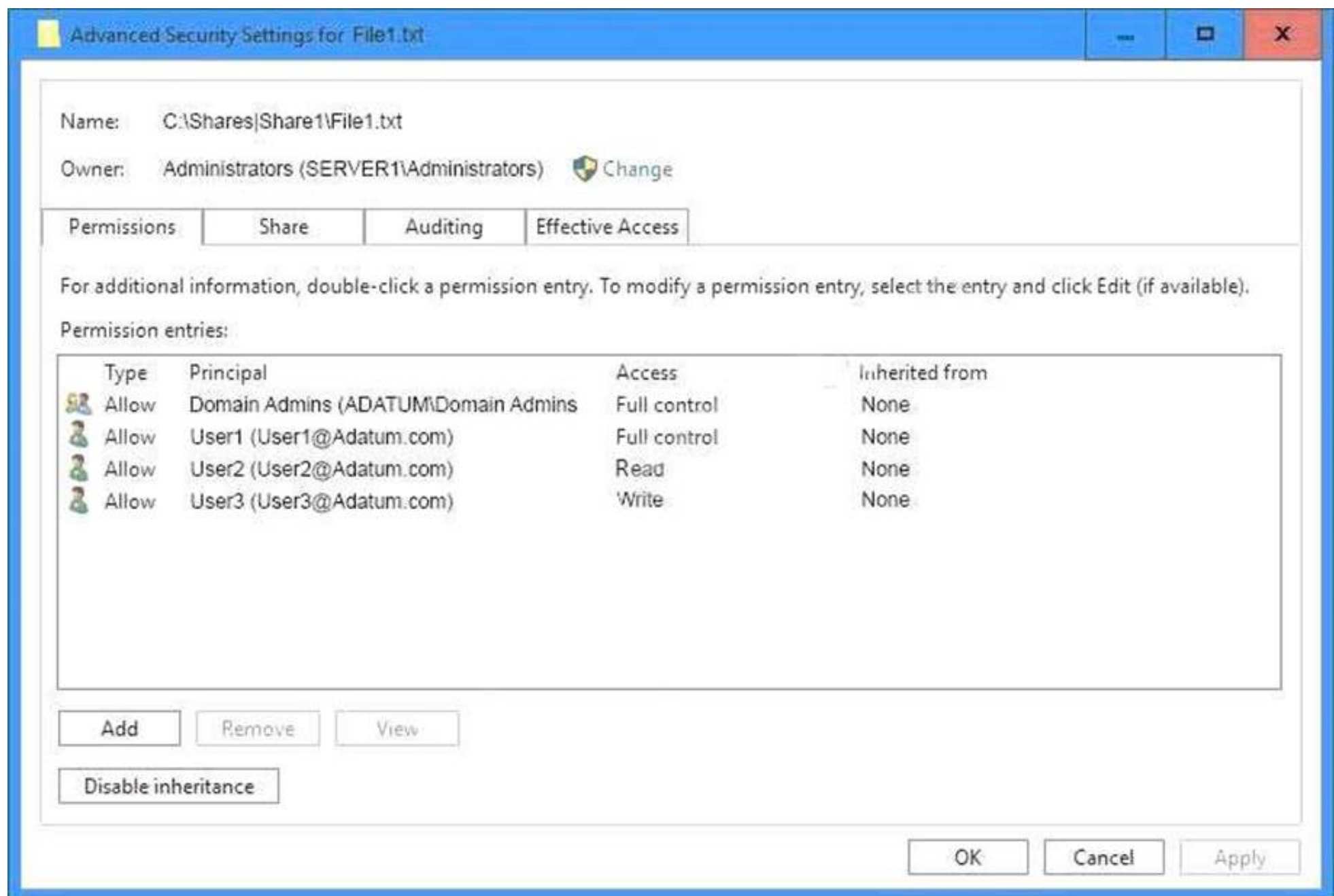
Server 1 has a share named Share1 that has the following configurations.

```
PresetPathAcl      : System.Security.AccessControl.DirectorySecurity
ShareState          : Online
AvailabilityType    : NonClustered
ShareType           : FileSystemDirectory
FolderEnumerationMode : AccessBased
CachingMode         : Manual
SmbInstance         : Default
CMTIMEOUT           : 0
ConcurrentUserLimit : 0
ContinuouslyAvailable : False
CurrentUsers        : 0
Description         :
EncryptData         : False
```

The Share permissions for Share1 are configured as shown in Share1 Exhibit.



Share1 contains a file named File1.txt. The Advanced Security settings for File1.txt are configured as shown in the File1.txt exhibit.



Select the appropriate statement from below. Select Yes if the state is true, otherwise no.

Answer Area

Statements	Yes	No
When User1 navigates to \\Server1\Share1\, the user can take ownership of File1.txt.	<input type="radio"/>	<input type="radio"/>
When User2 navigates to \\Server1\Share1\, the user will see File1.txt.	<input type="radio"/>	<input type="radio"/>
When User3 navigates to \\Server1\Share1\, the user will see File1.txt.	<input type="radio"/>	<input type="radio"/>

- A. Mastered
- B. Not Mastered

Answer: A

Explanation:

Answer Area

Statements	Yes	No
When User1 navigates to \\Server1\Share1\, the user can take ownership of File1.txt.	<input type="radio"/>	<input checked="" type="radio"/>
When User2 navigates to \\Server1\Share1\, the user will see File1.txt.	<input checked="" type="radio"/>	<input type="radio"/>
When User3 navigates to \\Server1\Share1\, the user will see File1.txt.	<input type="radio"/>	<input checked="" type="radio"/>

NEW QUESTION 132

Note: This question is part of a series of questions that use the same or similar answer choices. An answer choice may be correct for more than one question in the series. Each question is independent of the other questions in this series. Information and details provided in a question apply only to that question.

Your network contains Windows and non-Windows devices.

You have a DHCP server named Server1 that has an IPv4 scope named Scope1.

You need to prevent a client computer that uses the same name as an existing registration from updating the registration.

What should you do?

- A. From the properties of Scope1, modify the Conflict detection attempts setting.
- B. From the properties of Scope1, configure Name Protection.
- C. From the properties of IPv4, configure the bindings.
- D. From IPv4, create a new filter.
- E. From the properties of Scope1, create an exclusion range.
- F. From IPv4 run the DHCP Policy Configuration Wizard.
- G. From Control Panel, modify the properties of Ethernet.
- H. From Scope1, create a reservation.

Answer: B

NEW QUESTION 133

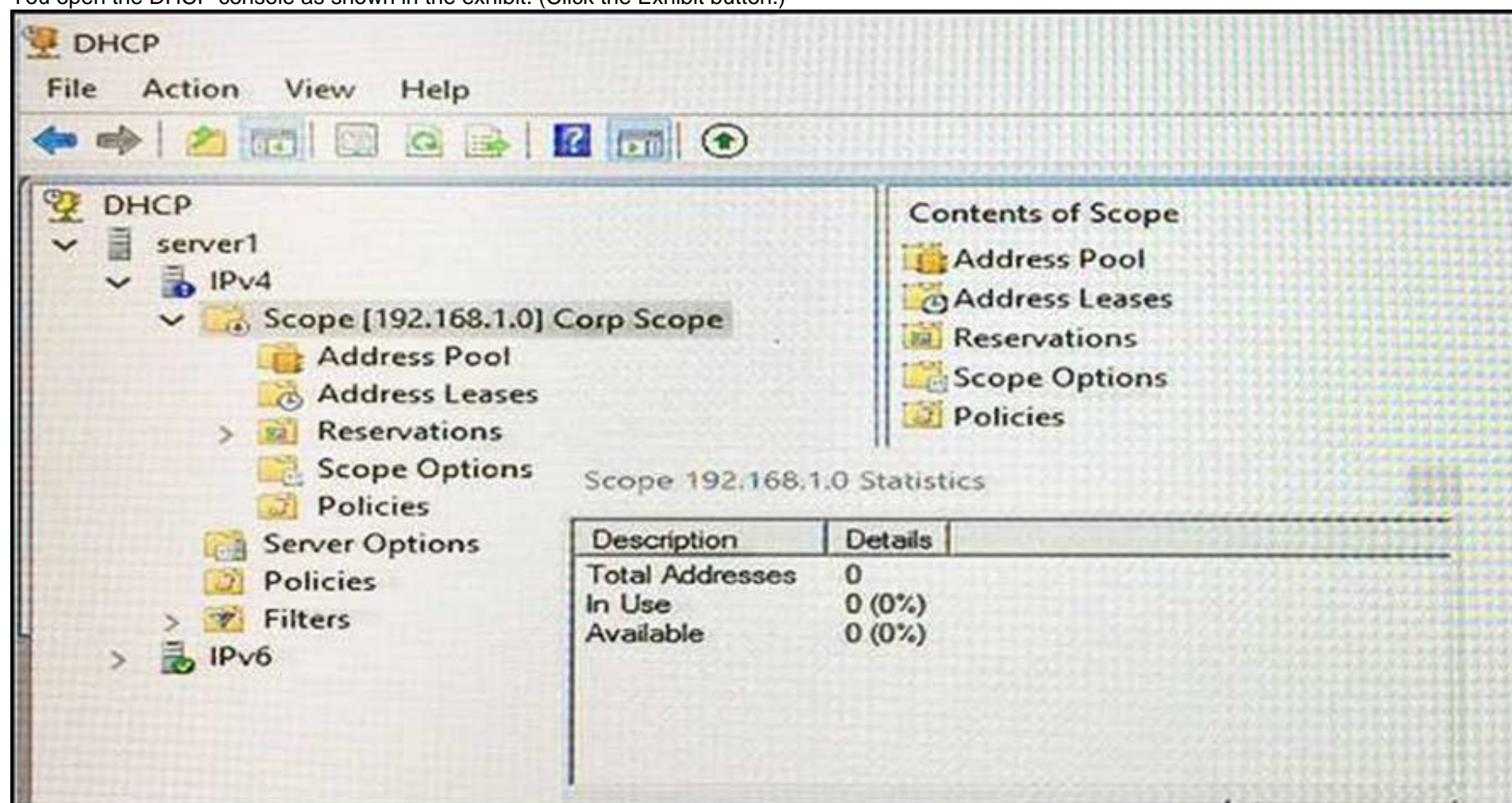
Note: This question is part of a series of questions that present the same scenario. Each question in the series contains a unique solution that might meet the stated goals. Some question sets might have more than one correct solution, while others might not have a correct solution.

After you answer a question in this sections, you will NOT be able to return to it. As a result, these questions will not appear in the review screen.

You network contains an Active Directory domain named contoso.com. The domain contains a DHCP server named Server1. All client computers run Windows 10 and are configured as DHCP clients.

Your helpdesk received calls today from users who failed to access the network from their Windows 10 computer.

You open the DHCP console as shown in the exhibit. (Click the Exhibit button.)



You need to ensure that all of the Windows 10 computers can receive a DHCP lease. Solution: You increase the scope size.
Does this meet the goal?

- A. Yes
B. No

Answer: B

Explanation:

[https://technet.microsoft.com/en-us/library/dd183581\(v=ws.10\).aspx](https://technet.microsoft.com/en-us/library/dd183581(v=ws.10).aspx)

NEW QUESTION 134

You have a RADIUS server named RADIUS1. RADIUS1 is configured to use an IP address of 172.23.100.101.

You add a wireless access point (wap) named WAP-Secure to your network. You configure WAP-Secure to use an IP address of 10.0.100.101.

You need to ensure that WAP-Secure can authenticate to RADIUS1 by using a shared secret key. What command should you run? To answer, select the appropriate options in answer area.

<div><div></div><div>Import-NpsConfiguration New-NpsRadiusClient</div></div>	<div><div></div><div>-address 10.0.100.101 -address 172.23.100.101</div></div>	<div><div></div><div>-enabled \$true -name WAP-Secure</div></div>	-SharedSecret "001001001001"
--	--	---	------------------------------

- A. Mastered
B. Not Mastered

Answer: A

Explanation:

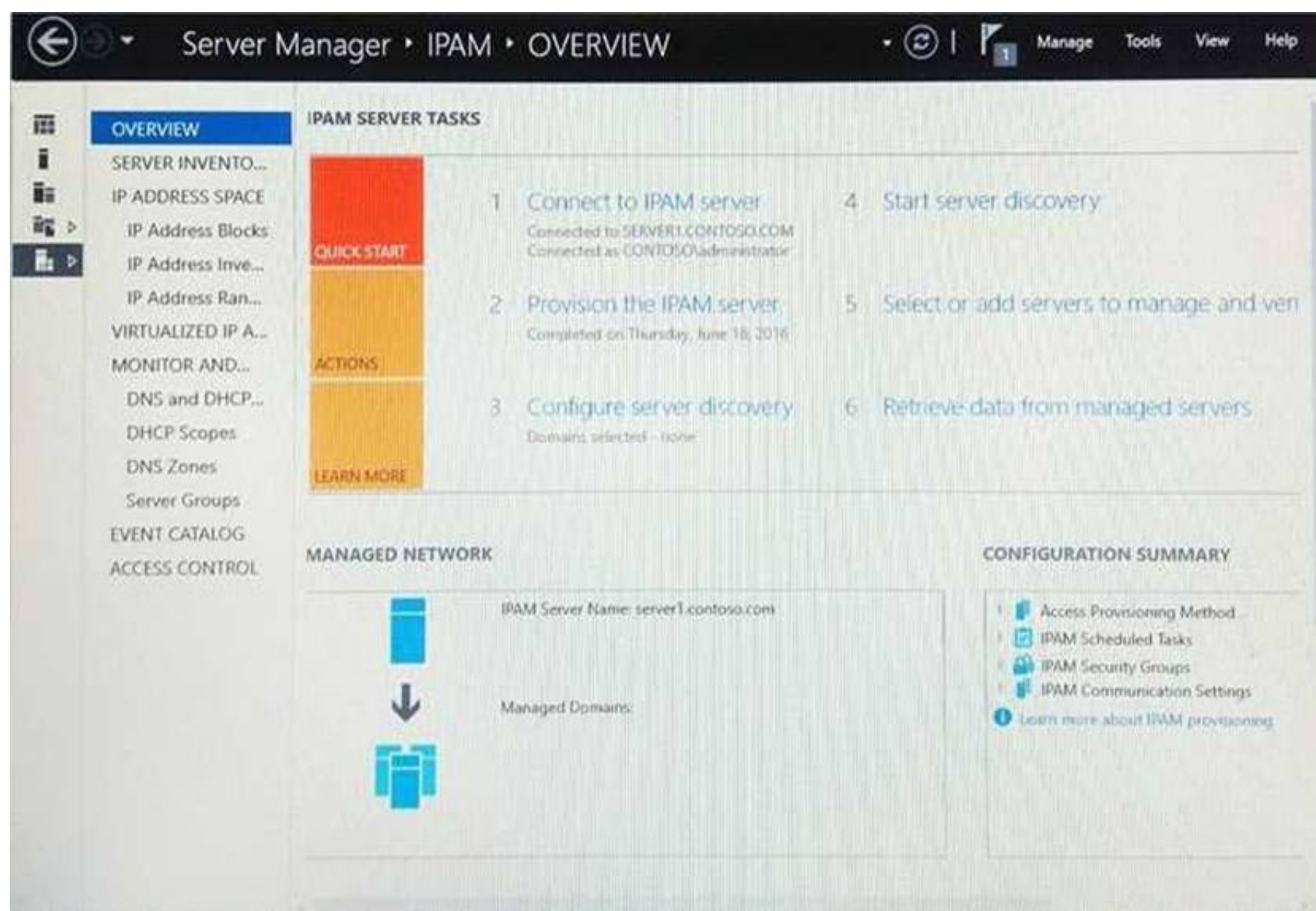
<div><div></div><div>Import-NpsConfiguration New-NpsRadiusClient</div></div>	<div><div></div><div>-address 10.0.100.101 -address 172.23.100.101</div></div>	<div><div></div><div>-enabled \$true -name WAP-Secure</div></div>	-SharedSecret "001001001001"
--	--	---	------------------------------

NEW QUESTION 139

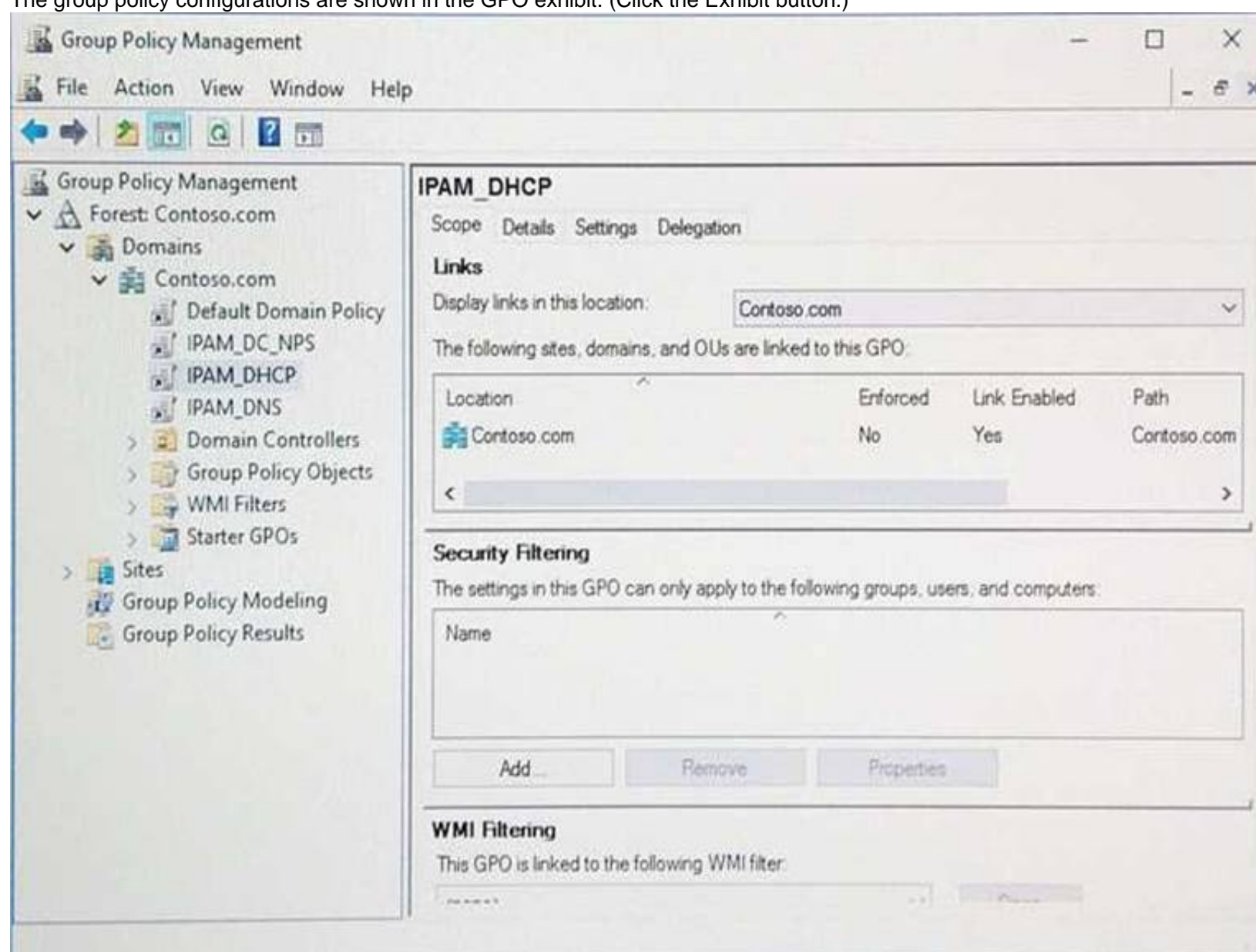
Your company has a testing environment that contains an Active Directory domain named contoso.com. The domain contains a server named Server1 that runs Windows Server 2016. Server1 has IP Address Management (IPAM) installed. IPAM has the following configuration.

Version	: 6.3.0.1
Port	: 48885
ProvisioningMethod	: Automatic
GpoPrefix	: IPAM
HMACKey	: System.Security.SecureString

The IPAM Overview page from Server Manager is shown in the IPAM Overview exhibit. (Click the Exhibit button.)



The group policy configurations are shown in the GPO exhibit. (Click the Exhibit button.)



For each of the following statements, select Yes if the statement is true. Otherwise, select No.

Statements	Yes	No
If a DNS server is added to contoso.com, the server will be discovered by IPAM automatically.	<input type="radio"/>	<input type="radio"/>
If you manually add a DHCP server named Server3 to IPAM and set the Manageability status to Managed , the IPAM_DHCP Group Policy will apply to Server3.	<input type="radio"/>	<input type="radio"/>
If you click Start server discovery , the domain controllers in contoso.com will be discovered by IPAM.	<input type="radio"/>	<input type="radio"/>

- A. Mastered
B. Not Mastered

Answer: A

Explanation:

Statements	Yes	No
If a DNS server is added to contoso.com, the server will be discovered by IPAM automatically.	<input type="radio"/>	<input checked="" type="radio"/>
If you manually add a DHCP server named Server3 to IPAM and set the Manageability status to Managed , the IPAM_DHCP Group Policy will apply to Server3.	<input type="radio"/>	<input checked="" type="radio"/>
If you click Start server discovery , the domain controllers in contoso.com will be discovered by IPAM.	<input type="radio"/>	<input checked="" type="radio"/>

NEW QUESTION 140

Your company owns the public Internet IP address range of 131.107.20.0 to 131.107.20.255.
You need to create a subnet that supports four hosts. The solution must minimize the number of addresses available to the subnet.
Which subnet should you use?

- A. 131.107.20.16/28
B. 131.107.20.16/30
C. 131.107.20.0/29
D. 131.107.20.0 with subnet mask 255.255.255.224

Answer: C

Explanation:

<http://jodies.de/ipcalc?host=131.107.20.0&mask1=29&mask2=>

NEW QUESTION 145

Note: This question is part of a series of questions that present the same scenario. Each question in the series contains a unique solution. Determine whether the solution meets the stated goals.
Your network contains an Active Directory domain named contoso.com. The domain contains a DNS server named Server1. All client computers run Windows 10. On Server1, you have the following zone configuration.

ZoneName	ZoneType	IsAutoCreated	IsDsIntegrated	IsReverseLookupZone	IsSigned
_nsdcs.contoso.com	Primary	False	True	False	False
0.in-addr.arpa	Primary	True	False	True	False
127.in-addr.arpa	Primary	True	False	True	False
255.in-addr.arpa	Primary	True	False	True	False
adatum.com	Forwarder	False	False	False	
contoso.com	Primary	False	True	False	False
fabrikam.com	Primary	False	True	False	True
TrustAnchors	Primary	False	True	False	False

You need to ensure that all of the client computers in the domain perform DNSSEC validation for the fabrikam.com namespace.
Solution: From a Group Policy object (GPO) in the domain, you modify the Network List Manager Policies. Does this meet the goal?

- A. Yes
- B. No

Answer: B

Explanation:

Network List Manager Policies are security settings that you can use to configure different aspects of how networks are listed and displayed on one computer or on many computers.

Network List Manager Policies are not related to DNSSEC.

References: [https://technet.microsoft.com/en-us/library/jj966256\(v=ws.11\).aspx](https://technet.microsoft.com/en-us/library/jj966256(v=ws.11).aspx)

NEW QUESTION 148

Your network contains multiple wireless access points (WAPs) that use WPA2-Personal authentication. The network contains an enterprise root certification authority (CA).

The security administrator at your company plans to implement WPA2-Enterprise authentication on the WAPs.

To support the authentication change, you deploy a server that has Network Policy Server (NPS) installed. You need to configure NPS to authenticate the wireless clients.

What should you do on the NPS server?

- A. Add RADIUS clients and configure network policies.
- B. Create a remote RADIUS server group and configure connection request policies.
- C. Create a remote RADIUS server group and install a server certificate.
- D. Add RADIUS clients and configure connection request policies.

Answer: A

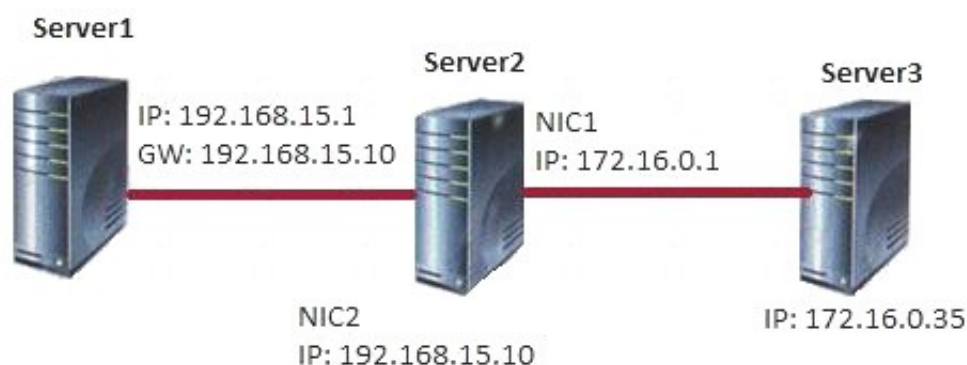
Explanation:

<https://ittrainingday.com/2013/12/25/how-to-configure-a-windows-radius-server-for-802-1x-wireless-or-wired-c>

NEW QUESTION 153

You have three servers named Server1, Server2, and Server3 that run Windows Server 2016. On all three servers, Windows Firewall is configured to allow ICMP traffic. Server2 has two network adapters named NIC1 and NIC2.

Your network is configured as shown in the exhibit. (Click the Exhibit button.)



The parameters for NIC2 on Server1 are shown in the following output.

Interface NIC2 Parameters

```
-----
IfLuid                      : ethernet_32770
IfIndex                     : 2
State                       : connected
Metric                     : 15
Link MTU                   : 1500 bytes
Reachable Time             : 15000 ms
Base Reachable Time       : 30000 ms
Retransmission Interval   : 1000 ms
DAD Transmits              : 3
Site Prefix Length        : 64
Site Id                    : 1
Forwarding                 : disabled
Advertising               : disabled
Neighbor Discovery        : enabled
Neighbor Unreachability Detection : enabled
Router Discovery          : dhcp
Managed Address Configuration : enabled
Other Stateful Configuration : enabled
Weak Host Sends           : disabled
Weak Host Receives        : disabled
Use Automatic Metric      : enabled
Ignore Default Routes     : disabled
Advertised Router Lifetime : 1800 seconds
Advertise Default Route   : disabled
Current Hop Limit         : 0
Force ARPND Wake up patterns : disabled
Directed MAC Wake up patterns : disabled
ECN capability            : application
-----
```

Which ping request will result in a reply from the destination host?

- A. From Server2, ping 192.168.15.1
- B. From Server3, ping 192.168.15.1
- C. From Server1, ping 172.16.0.1
- D. From Server1, ping 172.16.0.35

Answer: A

NEW QUESTION 156

Your network contains an Active Directory domain named contoso.com. The domain contains a domain-based Distributed File System (DFS) namespace named Namespace1.

You need to view the shares to which users will be redirected when the users attempt to connect to a folder named Folder1 in the DFS namespace.

What cmdlet should you run? To answer, select the appropriate options in the answer area.

	▼
Get-DfsnFolder	
Get-DfsnFolderTarget	
Get-DrsrMember	
Get-DfsrMembership	

	▼
\\Contoso.com\Folder1	
\\Contoso.com\Namespace1	
\\Contoso.com\Folder1\Namespace1	
\\Contoso.com\Namespace1\Folder1	

- A. Mastered
- B. Not Mastered

Answer: A

Explanation:

	▼
Get-DfsnFolder	
Get-DfsnFolderTarget	
Get-DrsrMember	
Get-DfsrMembership	

	▼
\\Contoso.com\Folder1	
\\Contoso.com\Namespace1	
\\Contoso.com\Folder1\Namespace1	
\\Contoso.com\Namespace1\Folder1	

NEW QUESTION 158

Note: This question is part of a series of questions that present the same scenario. Each question in the series contains a unique solution that might meet the stated goals. Some question sets might have more than one correct solution, while others might not have a correct solution.
After you answer a question in this sections, you will NOT be able to return to it. As a result, these questions will not appear in the review screen.
You have a server named Server1 that has the Network Policy and Access Services server role installed. You create a Shared Secret Network Policy Server (NPS) template named Template1.
You need to view the shared secret string used for Template1.
Solution: From the Network Policy Server console, you export the configuration, and you view the exported XML file.
Does this meet the goal?

- A. Yes
- B. No

Answer: A

NEW QUESTION 163

You run Get-NetIPAddress and receive the output shown in the following exhibit:

```
Administrator: Windows PowerShell
PS C:\Users\Administrator\CONTOSO> get-netipaddress -addressfamily ipv4

IPAddress      : 10.10.10.21
InterfaceIndex : 10
InterfaceAlias : Ethernet 2
AddressFamily  : IPv4
Type           : Unicast
PrefixLength   : 8
PrefixOrigin   : Dhcp
SuffixOrigin   : Dhcp
AddressState   : Preferred
ValidLifetime  : 4.00:46:28
PreferredLifetime : 4.00:46:28
SkipAssSource  : False
PolicyStore    : ActiveStore

IPAddress      : 10.10.10.20
InterfaceIndex : 11
InterfaceAlias : Ethernet
AddressFamily  : IPv4
Type           : Unicast
PrefixLength   : 8
PrefixOrigin   : Dhcp
SuffixOrigin   : Dhcp
AddressState   : Preferred
ValidLifetime  : 4.00:46:28
PreferredLifetime : 4.00:46:28
SkipAssSource  : False
PolicyStore    : ActiveStore

IPAddress      : 192.168.0.145
InterfaceIndex : 20
InterfaceAlias : Internet
AddressFamily  : IPv4
Type           : Unicast
PrefixLength   : 24
PrefixOrigin   : Manual
SuffixOrigin   : Manual
AddressState   : Preferred
ValidLifetime  : Infinite ([timespan]::MaxValue)
PreferredLifetime : Infinite ([timespan]::MaxValue)
```

Use the drop-down menus to select the answer choice that completes each statement based on the information presented in the graphic.
NOTE: Each correct selection is worth one point.

The network card that has an interface index of 20 has a subnet mask of [answer choice].

	▼
255.255.255.240	
255.255.255.0	
255.255.192.0	
255.255.0.0	
255.0.0.0	

The network card that has an interface index of 10 is part of a network that has [answer choice] IP addresses for hosts.

	▼
14	
254	
16,382	
65,534	
16,777,214	

- A. Mastered
- B. Not Mastered

Answer: A

Explanation:

The network card that has an interface index of 20 has a subnet mask of [answer choice].

	▼
255.255.255.240	
255.255.255.0	
255.255.192.0	
255.255.0.0	
255.0.0.0	

The network card that has an interface index of 10 is part of a network that has [answer choice] IP addresses for hosts.

	▼
14	
254	
16,382	
65,534	
16,777,214	

NEW QUESTION 166

You have two servers named Server1 and Server2. Server1 is a DNS server. Server2 is configured to use Server1 as the primary DNS server. You run ipconfig /displaydns on Server2 and receive the following output.

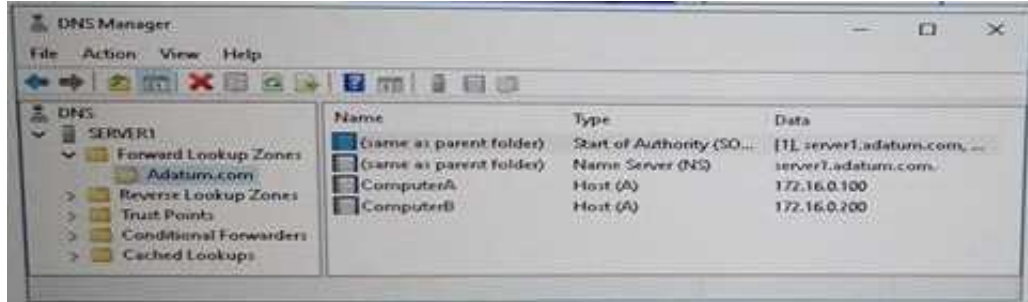
Windows IP Configuration
computera.adatum.com

```
-----
Record Name       : computera.adatum.com
Record Type       : 1
Time To Live      : 876
Data Length       : 4
Section          : Answer
A (Host) Record   : 172.16.0.50
```

computerb.adatum.com

Name does not exist.

An administrator modifies the records in adatum.com as shown in the Adatum.com Zone exhibit. (Click the Exhibit button.)



The properties of the DNS record for ComputerA are shown in the ComputerA exhibit. (Click the Exhibit button.)

ComputerA Properties
? X

Host(A)

Host (uses parent domain if left blank):

Fully qualified domain name (FQDN):

ComputerA.Adatum.com

IP address:

172.16.0.100

☐ Update associated pointer (PTR) record

☐ Delete this record when it becomes stale

Record time stamp:

Time to live (TTL): 0 :0 :15 :0 (DDDDDD:HH.MM.SS)

OK Cancel Apply

For each of the following statements, select Yes if the statement is true. Otherwise, select No. NOTE: Each correct selection is worth one point.

Statements	Yes	No
If Server2 attempts to connect to computera.adatum.com immediately, Server2 will connect to 172.16.0.100.	<input type="radio"/>	<input type="radio"/>
If Server2 attempts to connect to computera.adatum.com in 15 minutes, Server2 will connect to 172.16.0.100.	<input type="radio"/>	<input type="radio"/>
If Server2 attempts to connect to computerb.adatum.com immediately, the connection will succeed.	<input type="radio"/>	<input type="radio"/>

- A. Mastered
B. Not Mastered

Answer: A

Explanation:

Statements	Yes	No
If Server2 attempts to connect to computera.adatum.com immediately, Server2 will connect to 172.16.0.100.	<input type="radio"/>	<input checked="" type="radio"/>
If Server2 attempts to connect to computera.adatum.com in 15 minutes, Server2 will connect to 172.16.0.100.	<input checked="" type="radio"/>	<input type="radio"/>
If Server2 attempts to connect to computerb.adatum.com immediately, the connection will succeed.	<input checked="" type="radio"/>	<input type="radio"/>

NEW QUESTION 171

Note: This question is part of a series of questions that use the same or similar answer choices. An answer choice may be correct for more than one question in the series. Each question is independent of the other questions in this series. Information and details provided in a question apply only to that question.

You have a DHCP server named Server1 that has an IPv4 scope named Scope1.

Users report that when they turn on their client computers, it takes a long time to access the network. You validate that it takes a long time for the computers to receive an IP address from Server1.

You monitor the network traffic and discover that Server1 issues five ping commands on the network before leasing an IP address.

You need to reduce the amount of time it takes for the computers to receive an IP address. What should you do?

- A. From the properties of Scope1, modify the Conflict detection attempts setting.
B. From the properties of Scope1, configure Name Protection.
C. From the properties of IPv4, configure the bindings.
D. From IPv4, create a new filter.
E. From the properties of Scope1, create an exclusion range.
F. From IPv4, run the DHCP Policy Configuration Wizard.
G. From Control Panel, modify the properties of Ethernet.
H. From Scope1, create a reservation.

Answer: A

Explanation:

[https://technet.microsoft.com/en-us/library/ee941125\(v=ws.10\).aspx](https://technet.microsoft.com/en-us/library/ee941125(v=ws.10).aspx)

NEW QUESTION 173

You have a virtual machine named VM1 that runs windows Server 2016. VM1 hosts a service that requires high network throughput.

VM1 has a virtual network adapter that connects to a Hyper-V switch named vSwitch1 has one network adapter. The network adapter supports Remote Direct Memory Access (RDMA), the single root I/O virtualization (SR-IOV) interface. Quality of Service (QoS), and Receive Side Scaling (RSS).

You need to ensure that the traffic from VM1 can be processed by multiple networking processors. Which Windows PowerShell command should you run on the host of VM1?

- A. Set-NetAdapterRss
B. Set-NetAdapterRdma
C. Set-NetAdapterSriov
D. Set-NetAdapterQos

Answer: A

NEW QUESTION 175

Your network contains an Active Directory domain named contoso.com. The domain contains two servers named Server1 and Server2 that run Windows Server 2016.

Server1 has Microsoft System Center 2016 Virtual Machine Manager (VMM) installed. Server2 has IP Address Management (IPAM) installed. You create a domain user named User1. You need to integrate IPAM and VMM. VMM must use the account of User1 to manage IPAM. The solution must use the principle of least privilege. What should you do on each server? To answer, select the appropriate options in the answer area.

Answer Area

On Server1:

	▼
Create a Run as Account that uses User1	
Add User1 to the Fabric Administrator user role	
Add User1 to the Remote Management Users group	

On Server2:

	▼
Add User1 to IPAM Administrator Role	
Add User1 to IPAM ASM Administrator Role	
Add User1 to IPAM MSM Administrator Role	

- A. Mastered
- B. Not Mastered

Answer: A

Explanation:

On Server1: Create a Run As Account that uses User1.

On Server2: Add User1 to IPAM ASM Administrator Role. [https://technet.microsoft.com/en-us/library/dn783349\(v=ws.11\).aspx](https://technet.microsoft.com/en-us/library/dn783349(v=ws.11).aspx) [https://technet.microsoft.com/en-us/library/jj878348\(v=ws.11\).aspx](https://technet.microsoft.com/en-us/library/jj878348(v=ws.11).aspx)

NEW QUESTION 177

You have a server named Server1 that runs Windows Server 2016. Server1 is located on the perimeter network, and only inbound TCP port 443 is allowed to connect Server1 from the Internet.

You install the Remote Access server role on Server1.

You need to configure Server1 to accept VPN connections over port 443.

Which VPN protocol should you use?

- A. PPTP
- B. SSTP
- C. L2TP
- D. IKEv2

Answer: B

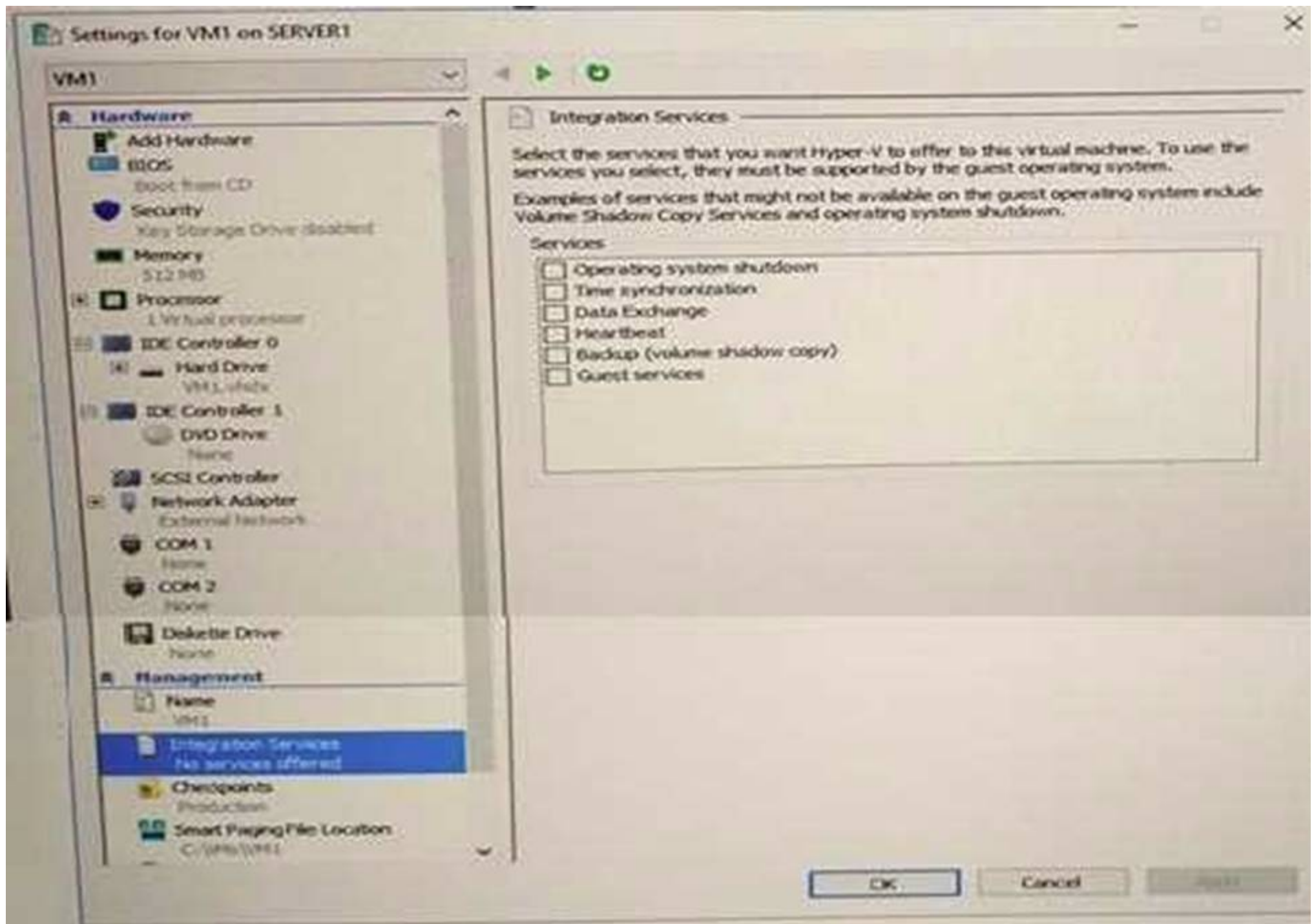
Explanation:

[https://technet.microsoft.com/en-us/library/dd458955\(v=ws.10\).aspx](https://technet.microsoft.com/en-us/library/dd458955(v=ws.10).aspx)

NEW QUESTION 178

You have a Hyper-V host named Server1 that runs Windows Server 2016. Server1 has multiple network adapters that have virtual machine queue (VMQ) enabled.

On Server1, you create a virtual machine named VM1 as shown in the exhibit.



You need to ensure that you can use virtual Receive-side Scaling (vRSS) on VM1.
What should you do?

- A. Add additional memory.
- B. Add additional processors.
- C. Add additional network adapters.
- D. Enable the Data Exchange integration service.

Answer: B

Explanation:

References: <https://docs.microsoft.com/en-us/windows-server/networking/technologies/vrss/vrss-top>

NEW QUESTION 182

Refer to Exhibit:

Administrator: Windows PowerShell

```
PS C:\> Get-DfsnRoot- namespace\\ Server1.Adatum. com\Namespace1| fl
```

State	: Online
Flags	: {Site Costing, AccessBased Enumeration}
Type	: Standalone
Path	: \\Server1.Adatum.com\ Namespace1
TimeToLiveSec	: 300
Description	:
NamespacePath	: \\Server1.Adatum.com\Namespace1
TimeToLive	: 300
GrantAdminAccess	: {BUILTIN\Administrators, NT AUTHORITY\SYSTEM}
PSComputerName	:
CimClass	: ROOT/Microsoft/Windows/dfs: MSFT_DFSNamespace
CimInstanceProperties	: {Description, Flags, NamespacePath, State...}
CimSystemProperties	: Microsoft.Management.Infrastructure.CimSystemProperties

```
PS C:\>
```

\\Server1.adatum.com\namespace1 has a folder target maned Folder1. A user named User1 has Full Control share and NTFS permissions to Folder1. Folder1 contains a file named File1.doc. User1 has only Write NTFS permissions to File1.doc.
 Use the drop-down menus to select the answer choice that completes each statement based on the information presented in the graphic.

When you want to provide redundancy for the DFS namespace on Server1, you must [answer choice].

▼

implement DFS Replication
 implement Failover Clustering
 install an additional domain controller

User1 will be [answer choice].

▼

Able to see File1.doc in File Explorer and will be able to open the file
 Able to see File1.doc in File Explorer and will be prevented from opening the file
 Prevented from seeing File1.doc in File Explorer but will be able to delete the file

- A. Mastered
- B. Not Mastered

Answer: A

Explanation:

When you want to provide redundancy for the DFS namespace on Server1, you must [answer choice].

implement DFS Replication
implement Failover Clustering
install an additional domain controller

User1 will be [answer choice].

Able to see File1.doc in File Explorer and will be able to open the file
Able to see File1.doc in File Explorer and will be prevented from opening the file
Prevented from seeing File1.doc in File Explorer but will be able to delete the file

NEW QUESTION 187

You have a server named Server1 that runs Windows Server 2016. You install the DHCP Server server role on Server1. You need to authorize DHCP on Server1. What should you run?

- A. dism.exe
- B. dns.exe
- C. dnscmd.exe
- D. netsh.exe
- E. Set-DhcpServerDatabase
- F. Set-DhcpServerv4DnsSetting
- G. Set-DhcpServerv6DnsSetting
- H. Set-DNSServerSetting

Answer: D

NEW QUESTION 189

You have an Active Directory forest that contains 30 servers and 6,000 Client computers. You deploy a new DHCP server that runs Windows Server 2016. You need to retrieve the list of the authorized DHCP servers. Which command should you run?

- A. Get-DHCPServerDatabase
- B. Netstat -p IP -s -a
- C. Get-DHCPServerInDc
- D. Show-ADAAuthenticationPolicyExpression -AllowedToAuthenticateTo

Answer: C

Explanation:

To get all authorized DHCP servers in Active Directory, you can use the following PowerShell cmdlet:
Get-DhcpServerinDC

NEW QUESTION 190

You have a server named Server1 that runs Windows Server 2016. You install the Hyper-V server role on Server1. Server1 has eight network adapters that are dedicated to virtual machines. The network adapters are Remote Direct Memory Access (RDMA)-enabled.

You plan to use Software Defined Networking (SDN). You will host the virtual machines for multiple tenants on the Hyper-V host.

You need to ensure that the network connections for the virtual machines are resilient if one or more physical network adapters fail.

What should you implement?

- A. single root I/O virtualization (SR-IOV)
- B. NIC Teaming on the Hyper-V host
- C. virtual Receive-side Scaling (vRSS)
- D. Switch Embedded Teaming (SET)

Answer: D

NEW QUESTION 195

Your network contains an Active Directory domain named contoso.com. The domain contains a DNS server named Server1. You enable Response Rate Limiting on Server1. You need to prevent Response Rate Limiting from applying to hosts that reside on the network of 10.0.0.0/24. Which cmdlets should you run? To answer, select the appropriate options in the answer area.

First cmdlet to run:

```
Add-DnsServerClientSubnet
Enable-DnsServerPolicy
Set-DnsServerResponseRateLimiting
Set-DnsServerResponseRateLimitingExceptionlist
```

Second cmdlet to run:

```
Add- DnsServerResponseRateLimitingExceptionlist
Add-DnsServerQueryResolutionPolicy
Add-DnsServerZoneScope
Set-DnsServerDsSetting
```

- A. Mastered
- B. Not Mastered

Answer: A

Explanation:

Set-DnsServerResponseRateLimiting

Add-DnsServerResponseRateLimitingExceptionlist

<https://docs.microsoft.com/en-us/powershell/module/dnsserver/set-dnsserverresponseratelimiting?view=win10-p>

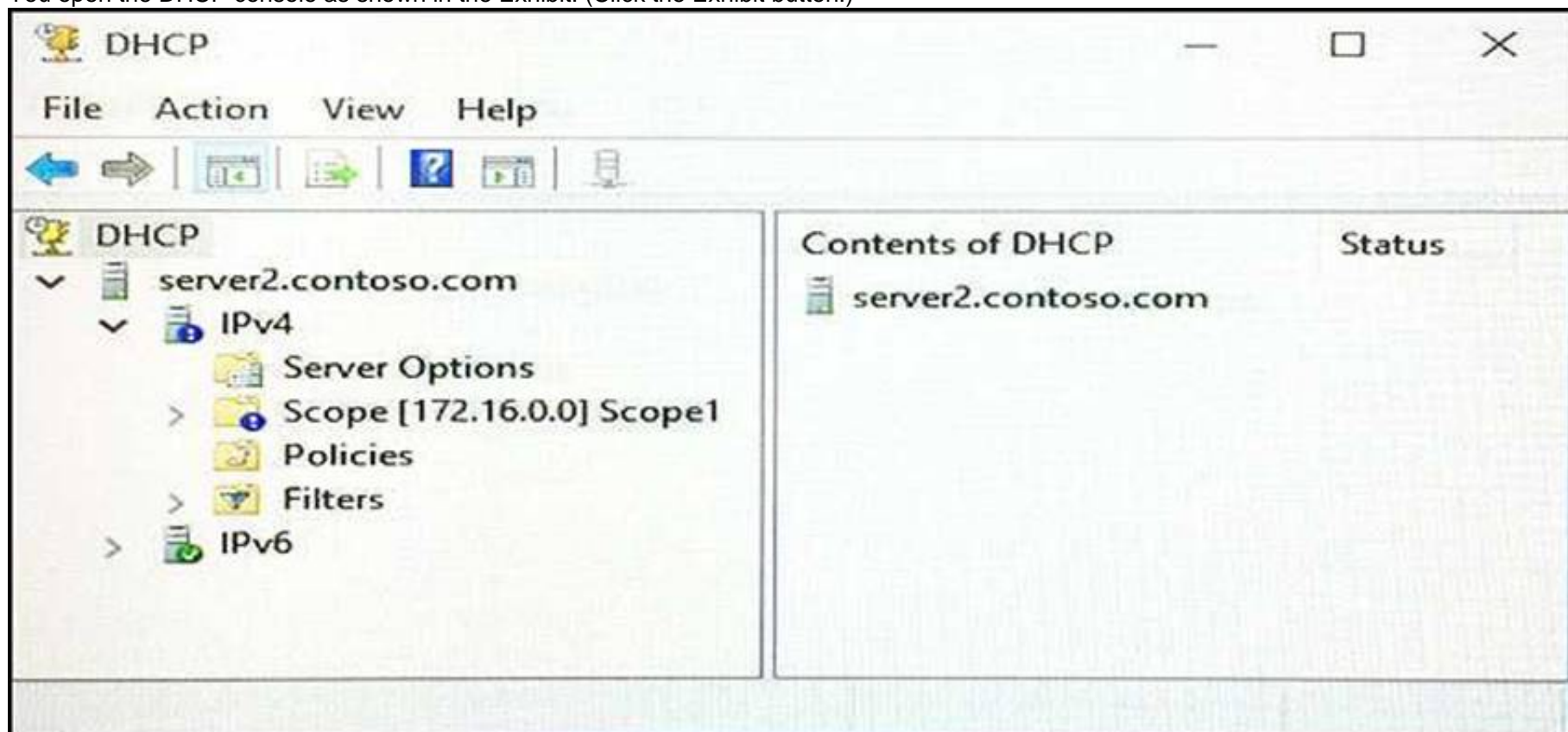
NEW QUESTION 198

Note: This question is part of a series of questions that present the same scenario. Each question in the series contains a unique solution that might meet the stated goals. Some question sets might have more than one correct solution, while others might not have a correct solution.

After you answer a question in this sections, you will NOT be able to return to it. As a result, these questions will not appear in the review screen.

You network contains an Active Directory domain named contoso.com. The domain contains a DHCP server named Server2 than runs Windows Server 2016. Users report that their client computers fail to obtain an IP address.

You open the DHCP console as shown in the Exhibit. (Click the Exhibit button.)



Scope1 has an address range of 172.16.0.10 to 172.16.0.100 and a prefix length of 23 bits.

You need to ensure that all of the client computers on the network can obtain an IP address from Server2. Solution: You run the Reconcile-DhcpServerv4IPRecord cmdlet.

Does this meet the goal?

- A. Yes
- B. No

Answer: B

Explanation:

<https://technet.microsoft.com/itpro/powershell/windows/dhcp-server/set-dhcpserverv4scope>

NEW QUESTION 202

You have a DHCP server named Server1.

Server1 has an IPv4 scope that contains 100 addresses for a subnet named Subnet1. Subnet1 provides guest access to the Internet. There are never more than 20 client computers on Subnet1 simultaneously; however, the computers that connect to Subnet 1 are rarely the same computers.

You discover that some client computers are unable to access the network. The computers that have the issue have IP addresses in the range of 169.254.0.0/16.

You need to ensure that all of the computers can connect successfully to the network to access the Internet. What should you do?

- A. Create a new scope that uses IP addresses in the range of 169.254.0.0/16.
- B. Modify the scope options.
- C. Modify the lease duration.
- D. Configure Network Access Protection (NAP) integration on the existing scope.

Answer: C

NEW QUESTION 206

Note: This question is part of a series of questions that present the same scenario. Each question in the series contains a unique solution that might meet the stated goals. Some question sets might have more than one correct solution, while others might not have a correct solution.

After you answer a question in this sections, you will NOT be able to return to it. As a result, these questions will not appear in the review screen.

Your network contains an Active Directory domain named adatum.com. The domain contains two DHCP servers named Server1 and Server2.

Server1 has the following IP configuration.

```
PS C:\> Get-DhcpServerv4Scope | fl ScopeId, SubnetMask, StartRange, EndRange, ActivatePolicies ; Get-DhcpServerSetting
```

```
ScopeId           : 172.16.0.0
SubnetMask         : 255.255.0.0
StartRange         : 172.16.0.20
EndRange           : 172.16.0.100
ActivatePolicies   : True
```

```
IsDomainJoined    : True
IsAuthorized       : False
DynamicBootp      : True
RestoreStatus      : False
ConflictDetectionAttempts : 0
NpsUnreachableAction : Full
NapEnabled         : False
ActivatePolicies   : True
```

Server2 has the following IP configuration.

```
PS C:\> Get-DhcpServerv4Scope | fl ScopeId, SubnetMask, StartRange, EndRange, ActivatePolicies ; Get-DhcpServerSetting
```

```
ScopeId           : 172.16.0.0
SubnetMask         : 255.255.0.0
StartRange         : 172.16.0.80
EndRange           : 172.16.0.150
ActivatePolicies   : True
```

```
IsDomainJoined    : True
IsAuthorized       : False
DynamicBootp      : True
RestoreStatus      : False
ConflictDetectionAttempts : 3
NpsUnreachableAction : Full
NapEnabled         : False
ActivatePolicies   : True
```

Some users report that sometimes they cannot access the network because of conflicting IP addresses. You need to configure DHCP to avoid leasing addresses that are in use already.

Solution: On Server2, you modify the ConflictDetectionAttempts value for IPv4. Does this meet the goal?

- A. Yes
- B. No

Answer: B

NEW QUESTION 208

You have servers named Server1 and DHCP1. Both servers run Windows Server 2016. DHCP1 contains an IPv4 scope named Scope1.

You have 1,000 client computers.

You need to configure Server1 to lease IP addresses for Scope1. The solution must ensure that Server1 is used to respond to up to 30 percent of the DHCP client requests only.

You install the DHCP Server server role on Server1. What should you do next?

- A. From the DHCP console, run the Configure Failover wizard.
- B. From Server Manager, install the Network Load Balancing feature.
- C. From Server Manager, install the Failover Clustering feature.
- D. From the DHCP console, create a superscope.

Answer: A

Explanation:

[https://technet.microsoft.com/en-us/library/hh831385\(v=ws.11\).aspx](https://technet.microsoft.com/en-us/library/hh831385(v=ws.11).aspx)

NEW QUESTION 212

You have a DHCP server named Server1.

Server1 has an IPv4 scope that serves 75 client computers that run Windows 10.

When you review the address leases in the DHCP console, you discover several leases for devices that you do not recognize.

You need to ensure that only the 75 Windows 10 computers can obtain a lease from the scope. What should you do?

- A. Run the Add-DhcpServerv4ExclusionRange cmdlet.
- B. Create and enable a DHCP filter.
- C. Create a DHCP policy for the scope.
- D. Run the Add-DhcpServerv4OptionDefinition cmdlet.

Answer: A

Explanation:

References: [https://technet.microsoft.com/en-us/library/jj590721\(v=wps.630\).aspx](https://technet.microsoft.com/en-us/library/jj590721(v=wps.630).aspx)

NEW QUESTION 216

Your network contains an Active Directory domain named contoso.com. The domain contains a member server named Server1 that runs Windows Server 2016.

You install IP Address Management (IPAM) on Server1. You select the automatic provisioning method, and then you specify a prefix of IPAM1.

Which cmdlet should you run? To answer, select the appropriate options in the answer area.

Answer Area

<div style="border: 1px solid black; padding: 5px;"> <div style="background-color: #f0f0f0; padding: 2px; text-align: right;">▼</div> <div style="padding: 5px;"> Add-IpamDiscoveryDomain Enable-IpamCapability Invoke-IpamGpoProvisioning Set-IpamConfiguration </div> </div>	-Domain "Contoso.com"	<div style="border: 1px solid black; padding: 5px;"> <div style="background-color: #f0f0f0; padding: 2px; text-align: right;">▼</div> <div style="padding: 5px;"> -AssetTag -DiscoverDns -GpoPrefixName -ProvisioningMethod </div> </div>
---	-----------------------	--

- A. Mastered
- B. Not Mastered

Answer: A

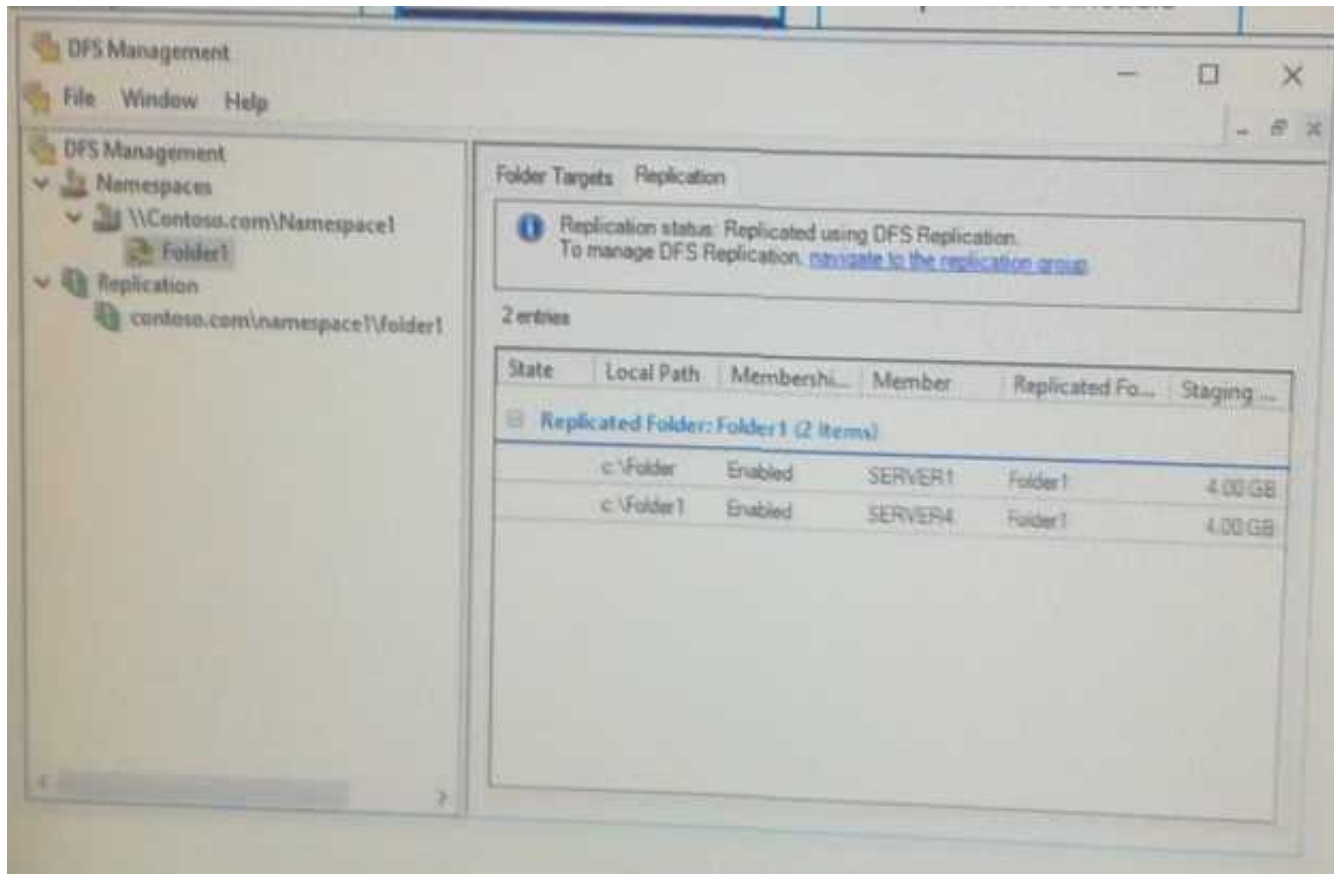
Explanation:

Invoke-IpamGpoProvisioning -Domain contoso.com -GpoPrefixName IPAM -IpamServerFqdn dc1.contoso.com

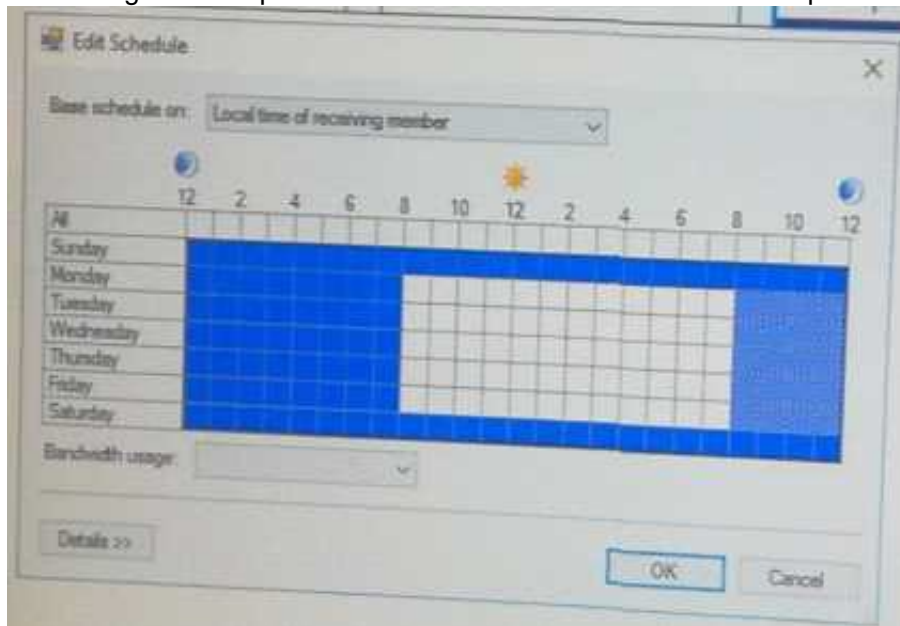
NEW QUESTION 221

Your network contains an Active Directory domain named contoso.com. The domain contains three servers named Server1, Server4, and Server5 that run Windows Server 2016.

Distributed File System (DFS) is deployed as shown in the DFS Configuration exhibit. (Click the Exhibit button.)



You configure the replication schedule for \\Contoso.com\Namespace1\Folder1 as shown in the Replication Schedule exhibit. (Click the Exhibit button.)



Use the drop-down menus to select the answer choice that completes each statement based on the information presented in the graphics.

If you copy a file to \\Server1\Folder on Monday at 14:00, the file will [answer choice].

- never replicate to Server4
- start replicating to Server4 at 20:00
- start replicating to Server4 the next day
- start replicating immediately

If you copy a file to \\Server4\Folder1 on Friday at 06:00, the file will [answer choice].

- never replicate to Server1
- start replicating to Server1 at 08:00
- start replicating to Server1 at 20:00
- start replicating to Server1 immediately

- A. Mastered
- B. Not Mastered

Answer: A

Explanation:

The Replicated Folder (Folder1) refers to the name of the DFS target, not the name of the local folder. It does not matter if the local folder name does not match the name of the DFS target. Therefore, replication will work as normal according to the configured schedule.

NEW QUESTION 225

You have a network address translation (NAT) server named NAT1 that has an external IP address of 131.107.50.1 and an internal IP address of 10.0.0.1. You deploy a new server named Web1 that has an IP address of 10.0.0.211. A remote server named app.fabrikam.com has an IP address of 131.107.1.232. You need to make Web1 accessible to app.fabrikam.com through NAT1. What command should you run from NAT1? To answer, select the appropriate options in the answer area.

Answer Area

▼	-ExternalIPAddress	▼	-InternalIPAddress	▼
Add-NetNatExternalAddress		10.0.0.211		10.0.0.1
Add-NetNatStaticMapping		131.107.1.232		10.0.0.211
		131.107.50.1		131.107.1.232
				131.107.50.1

- A. Mastered
- B. Not Mastered

Answer: A

Explanation:

<https://technet.microsoft.com/en-us/itpro/powershell/windows/nat/add-netnatstaticmapping>

NEW QUESTION 229

Note: This question is part of a series of questions that present the same scenario. Each question in the series contains a unique solution. Determine whether the solution meets the stated goals.

Your network contains an Active Directory domain named contoso.com. The domain contains a DNS server named Server1. All client computers run Windows 10. On Server1, you have the following zone configuration.

ZoneName	ZoneType	IsAutoCreated	IsDsIntegrated	IsReverseLookupZone	IsSigned
-----	-----	-----	-----	-----	-----
_msdcs.contoso.com	Primary	False	True	False	False
adatum.com	Forwarder	False	False	False	
contoso.com	Primary	False	True	False	False
fabrikam.com	Primary	False	False	False	True
TrustAnchors	Primary	False	True	False	False

You have the following subnets defined on Server1.

Name	IPv4Subnet	IPv6Subnet
----	-----	-----
Subnet1	{10.0.0.0/24}	
Subnet2	{10.0.1.0/24}	
Subnet3	{192.168.15.0/24}	
Subnet4	{172.16.1.0/24}	

You need to prevent Server1 from resolving queries from DNS clients located on Subnet4. Server1 must resolve queries from all other DNS clients. Solution: From Windows PowerShell on Server1, you run the Add-DnsServerQueryResolutionPolicy cmdlet. Does this meet the goal?

- A. Yes
- B. No

Answer: A

Explanation:

<https://technet.microsoft.com/en-us/itpro/powershell/windows/dns-server/add-dnsserverqueryresolutionpolicy>

NEW QUESTION 231

You implement Software Defined Networking (SDN) by using the network Controller server role. You have a virtual network named VNET1 that contains servers used by developers.

You need to ensure that only devices from the 192.168.0.0/24 subnet can access the virtual machine in VNET1.

What should you configure?

- A. a network security group (NSG)
- B. role-based access control
- C. a universal security group
- D. Dynamic Access Control

Answer: A

NEW QUESTION 236

Your network contains an Active Directory domain named contoso.com. The domain contains a DHCP server named Server1 that runs Windows Server 2016. You have a DHCP scope for the 10.0.0.0/24 IP subnet. One hundred and fifty clients reside in the subnet. Fifty of the DHCP clients are NOT domain-joined.

You need to ensure that DHCP clients without a configured DNS suffix register automatically in a DNS zone named workgroup.contoso.com. The other DHCP clients must register in the DNS zone of their respective domain.

What should you do?

- A. Configure the DNS properties of the 10.0.0.0/24 DHCP scope.
B. Create a DHCP policy that has a condition based on the fully qualified domain name (FQDN) criterion. Configure the IP address range properties of the policy.
C. Create a DHCP policy that has a condition based on the fully qualified domain name (FQDN) criterion. Configure the DNS properties of the policy.
D. Configure the 015 DNS Domain Name scope option in the 10.0.0.0/24 DHCP scope.

Answer: C

NEW QUESTION 240

Your company has a branch office that has three floors. The office currently uses a different subnet on each floor. The subnets are configured as shown in the following table.

Subnet name	Address space	Number of computers
Floor1	172.16.0.0/24	10
Floor2	172.16.10.0/24	20
Floor3	172.16.100.0/24	15

You have been asked to use reconfigure the network to use one subnet that encompasses all three floors. The new subnet will come from the 192.168.0.0/16 address space.

You need to identify which IP address and which subnet mask to use for the default gateway. The solution must meet the following requirements:

- Use the first available subnet
- Use a single subnet for all three floors.
- Use the first available IP address on the segment for the default gateway.
- Minimize the number of unused IP addresses.

Which IP address and which subnet mask should you identify? To answer, select the appropriate options in the answer area.

Subnet mask:

	▼
255.255.0.0	
255.255.255.0	
255.255.255.64	
255.255.255.128	
255.255.255.192	

Default gateway IP address:

	▼
192.168.0.1	
192.168.0.129	
192.168.255.193	
192.168.0.64	

- A. Mastered
B. Not Mastered

Answer: A

Explanation:

Subnet mask:

	▼
255.255.0.0	
255.255.255.0	
255.255.255.64	
255.255.255.128	
255.255.255.192	

Default gateway IP address:

	▼
192.168.0.1	
192.168.0.129	
192.168.255.193	
192.168.0.64	

NEW QUESTION 245

You have a Hyper-V host named Server1 that runs Windows Server 2016. Server1 has two network adaptors named NK1 and NIC2. Server2 has two virtual switches named vSwitch1 and vSwitch2. N1C1 connects to vSwitch1. NIC2 connects to vSwitch2

Server1 hosts a virtual machine named VM1. VM1 has two network adapters named vmNIC1 and vmNIC1. VmNIC1 connects to vSwitch1. VmNIC2 connects to vSwitch2.

You need to create a NIC team on VM1.

What should you run on VM1? To answer, select the appropriate options in the answer area. NOTE: Each correct selection is worth one point.

\$var1 =

"LDAP"

"Static"

"SwitchIndependent"

\$var2=

"Dynamic"

"HyperVPort"

"TranspostPorts"

- A. Mastered
- B. Not Mastered

Answer: A

Explanation:

Name NICTEAM1 TeamMembers vmNIC1, vmNIC2 –TeamingMode \$var1 –LoadBalancingAlgorithm \$var2

NEW QUESTION 250

Your network contains an Active Directory domain named contoso.com. The domain contains a domain-based Distributed file System (DFS) namespace named Namespace1 that has access-based enumeration enabled. Namespace1 has a folder named folder1. Folder1 has a target of \\Server1\Folder1. The Permission for folder1 are configured as shown in the following table.

Account name	Permission type	Permission
User1	NTFS	None
User1	Share	Change
User1	DFS	Read
User2	NTFS	Read
User2	Share	Full control
User2	DFS	None

Access-based enumeration is disabled for the share of Folder1.

You need to ensure that both User1 and User2 can see Folder1 when they access \\Contoso.com\NameSpace1 What should you do?

- A. Enable access-based enumeration for Folder1.
- B. Disable access-based enumeration for Namespace1.
- C. Assign User1 the read NTFS permission to folder1
- D. Deny User1 the read DFS permission to Folder1.

Answer: C

NEW QUESTION 253

You are deploying a small network that has 30 client computers. The network uses the 192.168.1.0/24 address space. All computers obtain IP configurations from a DHCP server named Server1.

You install a server named Server2 that runs Windows Server 2016. Server2 has two network adapters named internal and Internet. Internet connects to an Internet service provider (ISP) and obtains the 131.107.0.10 IP address. Internal connects to the internal network and is configured to use the 192.168.1.250 IP address.

You need to provide Internet connectivity for the client computers. What should you do?

- A. On Server2 run The New-NetNat -Name NAT1 -InternalIPInterfaceAddressPrefix 192.168.1.0/24 cmdle
- B. Configure Server1 to provide the 003 Router option of 192.168.1.250.
- C. On Server2 run the New-NetNat -Name NAT1 -InternalIPInterfaceAddressPrefix 192.168.1.0/24 cmdle
- D. Configure Server1 to provide the 003 Router option of 131.107.0.10.
- E. On Server1, stop the DHCP serve
- F. On the Internet network adapter on Server2, enable Internet Connection Sharing (ICS).
- G. Recreate the DHCP scope on Server1 to lease addresses from the 131.107.0.0/24 address spac
- H. On Server2, change the IP address of the internal network adapter to 131.107.0. 1. Configure Server 1 to provide the 003 Router option of 131.107.0. 1.

Answer: C

NEW QUESTION 255

You have multiple servers that run Windows Server 2016. You have a server named Server1 that is configured as a domain controller and a DNS server. You need to create an Active Directory-integrated zone on Server1. What should you run?

- A. dism.exe
- B. dns.exe

- C. dnscmd.exe
- D. netsh.exe
- E. Set-DhcpServerDatabase
- F. Set-DhcpServerv4DnsSetting
- G. Set-DhcpServerv6DnsSetting
- H. Set-DNSServerSetting

Answer: C

NEW QUESTION 259

You have a virtual machine named Server1 that runs Windows Server 2016.

You plan to use Server1 as part of a Software Defined Networking (SDN) solution.

You need to implement the Border Gateway Protocol (BGP) on Server1. What should you install?

- A. the peer Name Resolution Protocol (PNRP)feature
- B. the Routing role service
- C. the Network Device Enrollment Service role service
- D. the Network Policy and access Services server role

Answer: B

Explanation:

References:

<https://docs.microsoft.com/en-us/windows-server/remote/remote-access/bgp/border-gateway-protocol-bgp>

NEW QUESTION 261

Note: This question is part of a series of questions that present the same scenario. Each question in the series contains a unique solution. Determine whether the solution meets the stated goals.

Refer to exhibit:

Private1	Private
Internal1	Internal
External1	External

Server1 has two virtual machines named VM1 and VM that run Windows Server 2016. VM1 connects to Private1. VM2 has two network adapters.

You need to ensure that VM1 connects to the corporate network by using NAT.

Solution: You connect VM2 to Private1 and External1. You install the Remote Access server on VM2, and you configure NAT in the Routing and Remote Access console. You configure VM1 and VM2 as the default gateway.

Does this meet the goal?

- A. Yes
- B. No

Answer: B

NEW QUESTION 263

You have an internal network that contains multiple subnets.

You have a Microsoft Azure subscription that contains multiple virtual networks.

You need to deploy a hybrid routing solution between the network and the Azure subscription. The solution must ensure that the computers on all of the networks can connect to each other.

You install RAS Gateway and enable BGP routing on the network and in Azure.

Which three actions should you perform next in sequence? To answer, move the appropriate actions from the list of actions to the answer area and arrange them in the correct order.

Actions

Create a new route for each network.

Deploy a Site-to-Site VPN.

Advertise all of the routes on all of the BGP routers.

Deploy a Point-To-Site VPN.

Install the Routing Information Protocol (RIP).

Configure BGP Peering.

Answer Area



- A. Mastered
- B. Not Mastered

Answer: A

Explanation:

<https://docs.microsoft.com/en-us/azure/vpn-gateway/vpn-gateway-bgp-resource-manager-ps#enablebgp>

NEW QUESTION 268

A company named Contoso, Ltd has five Hyper-V hosts that are configured as shown in the following table.

Hyper-V host name	Configuration
Server1	Windows Server 2012 R2 and an Intel Xeon E7 processor
Server2	Windows Server 2012 R2 and an Intel i7 processor
Server3	Windows Server 2016 and an Intel i7 processor
Server4	Windows Server 2016 and an AMD Opteron processor
Server5	Windows Server 2016 and an Intel Xeon E7 processor

What are two valid live migration scenarios for virtual machines in your environment?

- A. from Sever1 to server5
- B. from Server4 to Server 5
- C. from Server2 to Server3
- D. from Server3 to Server4

Answer: AC

NEW QUESTION 271

Note: This question is part of a series of questions that present the same scenario. Each question in the series contains a unique solution that might meet the stated goals. Some question sets might have more than one correct solution, while others might not have a correct solution.

After you answer a question in this section, you will NOT be able to return to it. As a result, these questions will not appear in the review screen.

You have a Hyper-V host named Server 1. The network adapters on Server1 have single root I/O virtualization (SR-IOV) enabled.

Server1 hosts a virtual machine named VM1 that runs Windows Server 2016. You need to identify whether SR-IOV is used by VM1.

Solution: You sign in to VM1. You view the properties of the network connections. Does this meet the goal?

- A. Yes
- B. No

Answer: B

NEW QUESTION 275

You need to implement network virtualization.
On which object should you configure the virtual subnet ID?

- A. Virtual switch
- B. Hyper-V server
- C. VM
- D. Virtual network adapter

Answer: D

NEW QUESTION 280

Note: This question is part of a series of questions that use the same scenario. For your convenience, the scenario is repeated in each question. Each question presents a different goal and answer choices, but the text of the scenario is exactly the same in each question in this series.
Your network contains an Active Directory domain named contoso.com. The functional level of the domain is Windows Server 2012.
The network uses an address space of 192.168.0.0/16 and contains multiple subnets. The network is not connected to the Internet.
The domain contains three servers configured as shown in the following table.

Server name	Configuration
Server1	Domain controller and DNS server
Server2	Member server
Server3	DHCP server

Client computers obtain TCP/IP settings from Server3.
You add a second network adapter to Server2. You connect the new network adapter to the Internet. You install the Routing role service on Server2.
Server1 has four DNS zones configured as shown in the following table.

DNS zone name	Type	Zone file name
Contoso.com	Active Directory-integrated	None
Fabrikam.com	Primary	Fabrikam.com.dns
Tailspintoys.com	Primary	Tailspintoys.com.dns
168.192.in-addr.arpa	Primary	168.192.in-addr.arpa.dns

You need to ensure that when a record is added dynamically to fabrikam.com, only the computer that created the record can modify the record. The solution must allow administrators to modify all of the records in fabrikam.com.
What should you do?

- A. Change fabrikam.com to an Active Directory-integrated zone.
- B. Raise the functional level of the domain.
- C. Modify the security settings of the Fabrikam.com.dns file.
- D. Modify the Start of Authority (SOA) settings of fabrikam.com

Answer: A

Explanation:

[https://technet.microsoft.com/en-us/library/cc753751\(v=ws.11\).aspx](https://technet.microsoft.com/en-us/library/cc753751(v=ws.11).aspx)

NEW QUESTION 285

You have a DHCP server named Server1 that runs Windows Server 2016. You run Get-DhcpServerv4Scope, and you receive the following results.

ScopeId	SubnetMask	Name	State	StartRange	EndRange	LeaseDuration
-----	-----	----	-----	-----	-----	-----
172.16.0.0	255.255.255.0	Scope1	Active	172.16.0.10	172.16.0.250	8.00:00:00

You run Get-DhcpServerv4FilterList, and you receive the following results.

Allow	Deny
-----	-----
False	True

You run Get-DhcpServerv4Filter, and you receive the following results.

MacAddress	List	Description
-----	----	-----
AA-*-*-*-*	Allow	
BB-*-*-*-*	Deny	

For each of the following statements, select Yes if the statement is true. Otherwise, select No.
NOTE: Each selection is worth one point.

Statements	Yes	No
A device that has a MAC address of AABBCCDDEEFF can obtain an IP address from Server1.	<input type="radio"/>	<input type="radio"/>
A device that has a MAC address of BBCCDDEEFFAA can obtain an IP address from Server1.	<input type="radio"/>	<input type="radio"/>
A device that has a MAC address of CCDDEEFFAABB can obtain an IP address from Server1.	<input type="radio"/>	<input type="radio"/>

- A. Mastered
B. Not Mastered

Answer: A

Explanation:

Statements	Yes	No
A device that has a MAC address of AABBCCDDEEFF can obtain an IP address from Server1.	<input checked="" type="radio"/>	<input type="radio"/>
A device that has a MAC address of BBCCDDEEFFAA can obtain an IP address from Server1.	<input type="radio"/>	<input checked="" type="radio"/>
A device that has a MAC address of CCDDEEFFAABB can obtain an IP address from Server1.	<input checked="" type="radio"/>	<input type="radio"/>

NEW QUESTION 287

You manage a Windows Server 2016 software-defined network.

Network Controller is installed on a three-node domain-joined cluster of virtual machines.

You need to add a new access control list (ACL) for the network controller to the network interface on a tenant virtual machine. The ACL will have only one rule that prevents only outbound traffic from the 10.10.10.0/24 subnet.

You plan to run the following Windows PowerShell commands.

```
$ruleproperties = new-object Microsoft.Windows.NetworkController.AclRuleProperties
```

```
$ruleproperties.SourcePortRange = "0-65535"
```

```
$ruleproperties.DestinationPortRange = "0-65535"
```

```
$ruleproperties.Action = "Deny"
```

```
$ruleproperties.Priority = "100"
```

```
$ruleproperties.Type = "Outbound"
```

```
$ruleproperties.Logging = "Enabled"
```

Which three remaining properties should you add to the rule? Each correct answer presents part of the solution. (Choose three.)

NOTE: Each correct selection is worth one point.

- A. `$ruleproperties.SourceAddressPrefix = "10.10.10.0/24"`
B. `$ruleproperties.DestinationAddressPrefix = "10.10.10.0/24"`
C. `$ruleproperties.Protocol = "ALL"`
D. `$ruleproperties.Protocol = "TCP"`
E. `$ruleproperties.SourceAddressPrefix = "*"`
F. `$ruleproperties.DestinationAddressPrefix = "*"`

Answer: ACF

NEW QUESTION 292

You have an IP Address Management (IPAM) server named IPAM1 that runs Window Server 2016. IPAM1 manages all of the DHCP servers on your network.

You are troubleshooting an issue for a client that fails to receive an IP address from DHCP.

You need to ensure that from IPAM1, you can view all of the event data for the DHCP leases from the last 24 hours.

Solution: From Windows PowerShell, you run the `Invoke-IpamServerProvisioning` cmdlet.

Does this meet the goal?

- A. Yes

B. No

Answer: B

Explanation:

References:

<https://docs.microsoft.com/en-us/powershell/module/ipamserver/invoke-ipamserverprovisioning?view=win10-p>

NEW QUESTION 297

You have an Active Directory domain that contains several Hyper-V hosts that run Windows Server 2016. You plan to deploy network virtualization and to centrally manage Datacenter Firewall policies.

Which component must you install for the planned deployment?

- A. the Data Center Bridging feature
- B. the Network Controller server role
- C. the Routing role service
- D. the Canary Network Diagnostics feature

Answer: B

Explanation:

[https://technet.microsoft.com/en-us/library/mt403307\(v=ws.11\).aspx#bkmk_slb](https://technet.microsoft.com/en-us/library/mt403307(v=ws.11).aspx#bkmk_slb)

NEW QUESTION 300

You have an Active Directory domain named Contoso.com. The domain contains servers named Server1 and Server2 that run Windows Server 2016.

You install the Remote Access server role on Server1. You install the Network Policy and Access Services server role on Server2.

You need to configure Server1 to use Server2 as a RADIUS server. What should you do?

- A. From the Connection Manager Administration Kit, create a Connection Manager profile.
- B. From Routing and Remote Access, configure the authentication provider.
- C. From Active Directory Users and Computers, modify the Delegation settings of the Server1 computer account.
- D. From Server Manager, create an Access Policy.

Answer: D

Explanation:

<http://www.nyazit.com/configure-network-policy-server-2016/>

NEW QUESTION 302

.....

Thank You for Trying Our Product

* 100% Pass or Money Back

All our products come with a 90-day Money Back Guarantee.

* One year free update

You can enjoy free update one year. 24x7 online support.

* Trusted by Millions

We currently serve more than 30,000,000 customers.

* Shop Securely

All transactions are protected by VeriSign!

100% Pass Your 70-741 Exam with Our Prep Materials Via below:

<https://www.certleader.com/70-741-dumps.html>