

Exam Questions 98-367

MTA Security Fundamentals Practice Test

<https://www.2passeasy.com/dumps/98-367/>



NEW QUESTION 1

Passwords that contain recognizable words are vulnerable to a:

- A. Denial of Service attack
- B. Hashing attack
- C. Dictionary attack
- D. Replay attack

Answer: C

Explanation:

A dictionary attack is a method of breaking into a password-protected computer or server by systematically entering every word in a dictionary as a password. A dictionary attack can also be used in an attempt to find the key necessary to decrypt an encrypted message or document.

Dictionary attacks work because many computer users and businesses insist on using ordinary words as passwords. Dictionary attacks are rarely successful against systems that employ multiple-word phrases, and unsuccessful against systems that employ random combinations of uppercase and lowercase letters mixed up with numerals.

Reference: <http://searchsecurity.techtarget.com/definition/dictionary-attack>

NEW QUESTION 2

Dumpster diving refers to a physical threat that a hacker might use to look for information about a computer network.

Select the correct answer if the underlined text does not make the statement correct. Select "No change is needed" if the underlined text makes the statement correct.

- A. Phishing
- B. Malware
- C. Reverse Social engineering
- D. No change is needed

Answer: D

NEW QUESTION 3

E-mail spoofing:

- A. Forwards e-mail messages to all contacts
- B. Copies e-mail messages sent from a specific user
- C. Obscures the true e-mail sender
- D. Modifies e-mail routing logs

Answer: C

Explanation:

Reference: <http://www.microsoft.com/mscorp/safety/technologies/senderid/technology.msp>

NEW QUESTION 4

You are an intern at Litware, Inc. Your manager asks you to make password guess attempts harder by limiting login attempts on company computers. What should you do?

- A. Enforce password sniffing.
- B. Enforce password history.
- C. Make password complexity requirements higher.
- D. Implement account lockout policy.

Answer: D

Explanation:

Reference: <http://technet.microsoft.com/en-us/library/dd277400.aspx>

NEW QUESTION 5

You need to prevent unauthorized users from reading a specific file on a portable computer if the portable computer is stolen. What should you implement?

- A. File-level permissions
- B. Advanced Encryption Standard (AES)
- C. Folder-level permissions
- D. Distributed File System (DFS)
- E. BitLocker

Answer: E

Explanation:

Reference: <http://4sysops.com/archives/seven-reasons-why-you-need-bitlocker-hard-drive-encryption-for-your-whole-organization/>

NEW QUESTION 6

Your password is 1Vu*cl!8sT.

Which attack method is your password vulnerable to?

- A. Rainbow table
- B. Brute force
- C. Spidering
- D. Dictionary

Answer: A

NEW QUESTION 7

Which of the following describes a VLAN?

- A. It connects multiple networks and routes data packets.
- B. It is a logical broadcast domain across physical subnets.
- C. It is a subnetwork that reveals a company's externally facing resources to the public network.
- D. It allows different network protocols to communicate between different network segments.

Answer: B

Explanation:

VLAN (Virtual Local Network) is a logically separate IP subnetwork which allow multiple IP networks and subnets to exist on the same-switched network. VLAN is a logical broadcast domain that can span multiple physical LAN segments. It is a modern way administrators configure switches into virtual local-area networks (VLANs) to improve network performance by separating large Layer 2 broadcast domains into smaller ones.

NEW QUESTION 8

Which enables access to all of the logged-in user's capabilities on a computer?

- A. Java applets
- B. ActiveX controls
- C. Active Server Pages (ASP)
- D. Microsoft Silverlight

Answer: B

NEW QUESTION 9

You suspect a user's computer is infected by a virus. What should you do first?

- A. Restart the computer in safe mode
- B. Replace the computer's hard disk drive
- C. Disconnect the computer from the network
- D. Install antivirus software on the computer

Answer: D

NEW QUESTION 10

Which technology enables you to filter communications between a program and the Internet?

- A. RADIUS server
- B. Antivirus software
- C. Software firewall
- D. BitLocker To Go

Answer: C

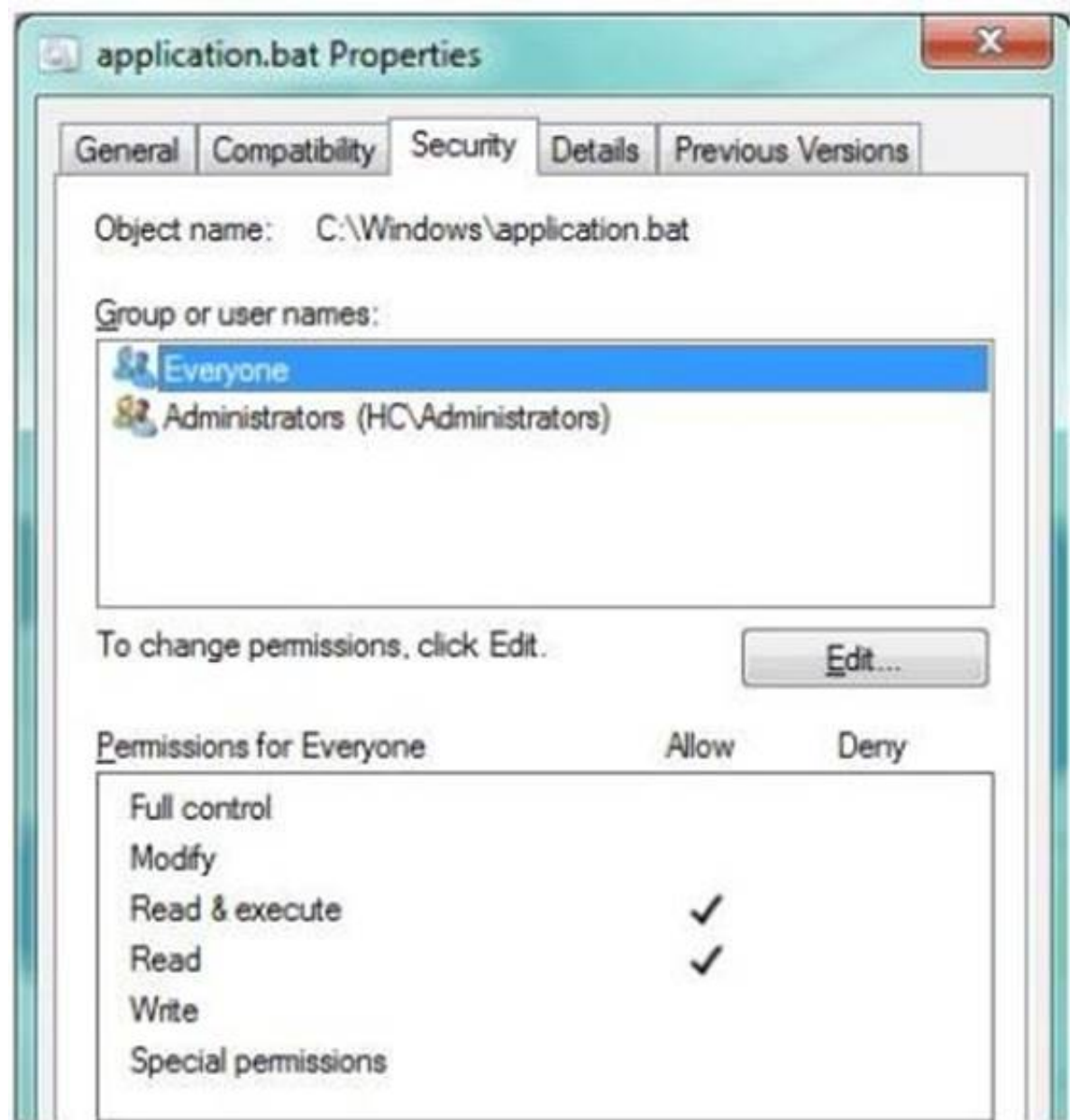
Explanation:

There are two types of firewalls the Hardware Firewall and the Software Firewall. A Software Firewall is a software program and a Hardware Firewall is a piece of hardware. Both have the same objective of filtering communications over a system.

NEW QUESTION 10

HOTSPOT

Your supervisor asks you to review file permission settings on the application.bat file. You need to report which file system the file is on and the type of permission the file has. You review the application Properties dialog box shown in the following image:



Use the drop-down menus to select the answer choice that completes each statement. Each correct selection is worth one point.

Answer Area

The "cygwin.bat" file in the image is currently on the [answer choice] file system.

[answer choice] permissions are currently being displayed for the "cygwin.bat" file.

Answer Area

The "cygwin.bat" file in the image is currently on the [answer choice] file system.

[answer choice] permissions are currently being displayed for the "cygwin.bat" file.

- A. Mastered
- B. Not Mastered

Answer: A

Explanation:

Answer Area

The "cygwin.bat" file in the image is currently on the **[answer choice]** file system.

[answer choice] permissions are currently being displayed for the "cygwin.bat" file.

FAT16

FAT32

NTFS

Basic

Advanced

Full Control

NEW QUESTION 15

Many Internet sites that you visit require a user name and password. How should you secure these passwords?

- A. Save them to a text file
- B. Enable session caching
- C. Configure the browser to save passwords
- D. Save them to an encrypted file
- E. Reuse the same password

Answer: D

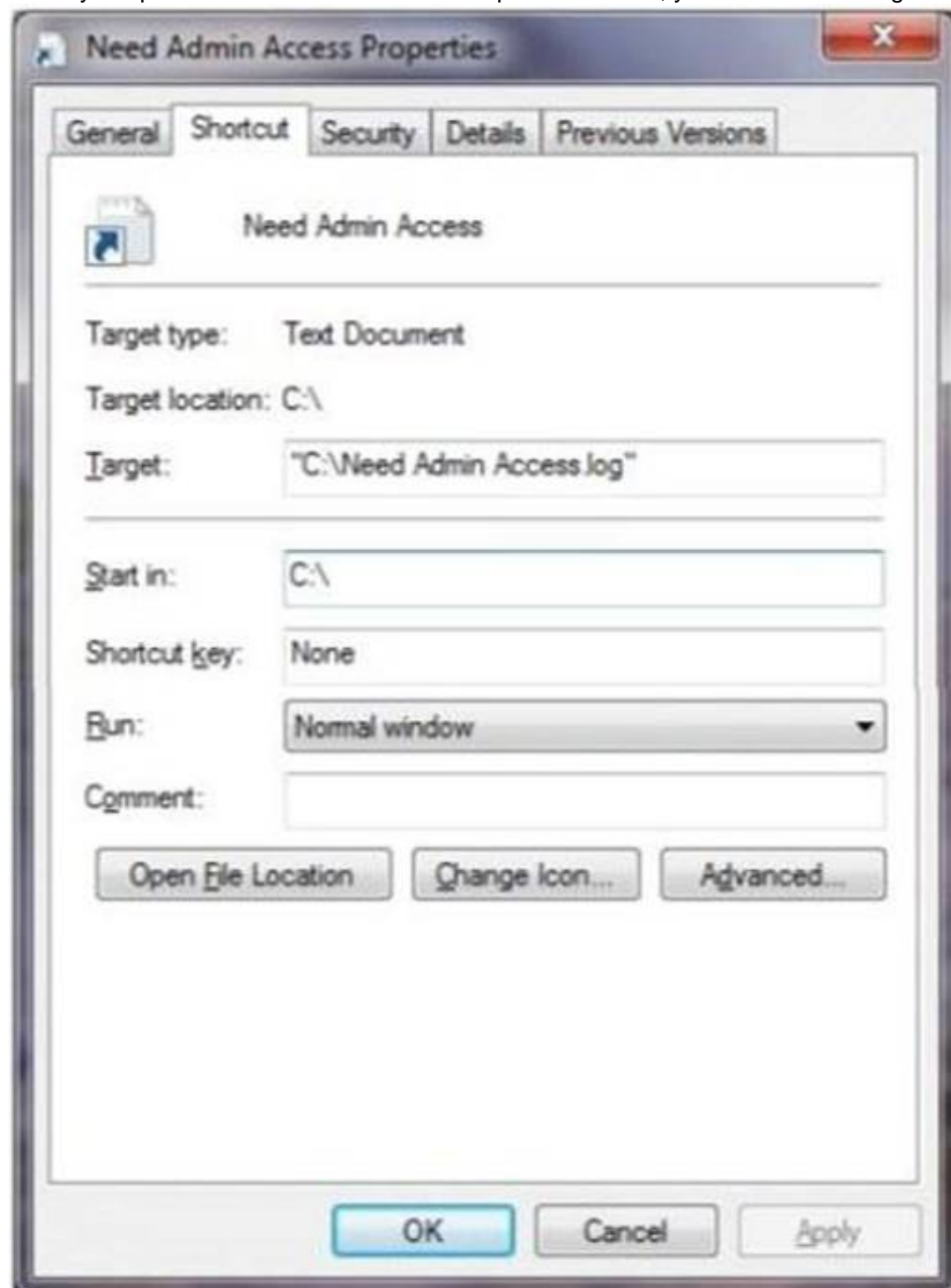
NEW QUESTION 17

HOTSPOT

You are at school and logged in to a Windows 7 computer using a standard user account.

You need to change some of the properties of a desktop icon for an assignment. Your instructor provides you with an administrator username and password and asks you to do two tasks.

When you open the Need Admin Access Properties window, you see the following image:



Use the drop-down menus to select the answer choice that completes each statement. Each correct selection is worth one point.

Answer Area

To allow this log file to be opened as an administrator, you should [answer choice]

To allow this log file to be opened in a maximized window, you should [answer choice]

Answer Area

To allow this log file to be opened as an administrator, you should [answer choice]

click Advanced and choose "run as administrator."
 click Run and choose "run as administrator."
 click the Security tab and give admin rights to your standard account.

To allow this log file to be opened in a maximized window, you should [answer choice]

click Run and choose "maximized window."
 click the General tab and click "change to open the document as a maximized window."
 click Change Icon to choose "run as a maximized window."

- A. Mastered
- B. Not Mastered

Answer: A

Explanation:

Answer Area

To allow this log file to be opened as an administrator, you should [answer choice]

click Advanced and choose "run as administrator."
 click Run and choose "run as administrator."
 click the Security tab and give admin rights to your standard account.

To allow this log file to be opened in a maximized window, you should [answer choice]

click Run and choose "maximized window."
 click the General tab and click "change to open the document as a maximized window."
 click Change Icon to choose "run as a maximized window."

NEW QUESTION 21

Which is a special folder permission?

- A. Read
- B. Modify
- C. Write
- D. Delete

Answer: D

Explanation:

Reference: <http://support.microsoft.com/kb/308419>

NEW QUESTION 22

Phishing is an attempt to:

- A. Obtain information by posing as a trustworthy entity.
- B. Limit access to e-mail systems by authorized users.
- C. Steal data through the use of network intrusion.
- D. Corrupt e-mail databases through the use of viruses.

Answer: A

Explanation:

Phishing is the act of attempting to acquire sensitive information such as usernames, passwords, and credit card details (and sometimes, indirectly, money) by masquerading as a trustworthy entity in an electronic communication.

NEW QUESTION 23

Shredding documents helps prevent:

- A. Man-in-the-middle attacks
- B. Social engineering
- C. File corruption
- D. Remote code execution

E. Social networking

Answer: B

Explanation:

Reference: <http://technet.microsoft.com/en-us/library/cc875841.aspx>

NEW QUESTION 27

A user who receives a large number of emails selling prescription medicine is probably receiving pharming mail.

Select the correct answer if the underlined text does not make the statement correct. Select "No change is needed" if the underlined text makes the statement correct.

- A. Malware
- B. Spoofed mail
- C. Spam
- D. No change is needed.

Answer: C

NEW QUESTION 28

You have two servers that run Windows Server. All drives on both servers are formatted by using NTFS.

You move a file from one server to the other server. The file's permissions in the new location will:

- A. Enable full access to the everyone group
- B. Restrict access to the Administrators group
- C. Inherit the destination folder's permissions
- D. Retain the original folder's permissions

Answer: C

Explanation:

You can modify how Windows Explorer handles permissions when objects are copied or moved to another NTFS volume. When you copy or move an object to another volume, the object inherits the permissions of its new folder.

NEW QUESTION 31

The default password length for a Windows Server domain controller is:

- A. 5
- B. 7
- C. 14

Answer: C

NEW QUESTION 35

Which provides the highest level of security in a firewall?

- A. Stateful inspection
- B. Outbound packet filters
- C. Stateless inspection
- D. Inbound packet filters

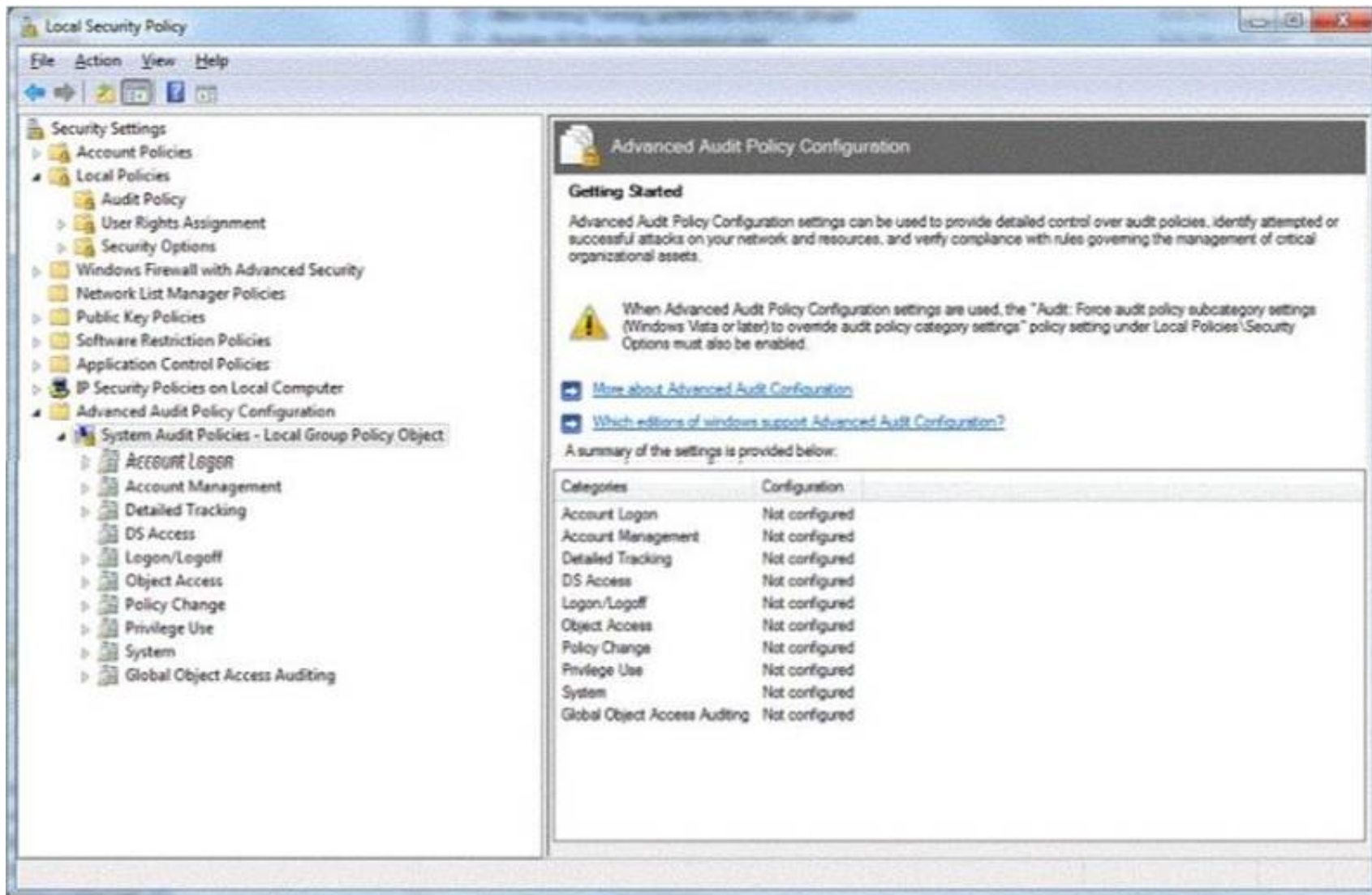
Answer: A

NEW QUESTION 40

HOTSPOT

You are preparing an audit policy for the workstations at Contoso, Ltd. Currently, no advanced auditing is enabled. The workstations are not members of the domain.

The settings of your Advanced Audit Policy Configuration are shown in the following image:



Use the drop-down menus to select the answer choice that completes each statement. Each correct selection is worth one point.

Answer Area

To enable auditing of all local login events, you need to turn on the [answer choice] Advanced Audit Policy.

You need to know when someone accesses files in the c:\temp directory. Auditing is turned on for this directory. You need to enable the [answer choice] Advanced Audit Policy to log these events.

Answer Area

To enable auditing of all local login events, you need to turn on the [answer choice] Advanced Audit Policy.

Logon/Logoff
Account Logon
System

You need to know when someone accesses files in the c:\temp directory. Auditing is turned on for this directory. You need to enable the [answer choice] Advanced Audit Policy to log these events.

Object Access
Privilege Use
System

- A. Mastered
- B. Not Mastered

Answer: A

Explanation:

Answer Area

To enable auditing of all local login events, you need to turn on the **[answer choice]** Advanced Audit Policy.

A screenshot of the Windows Security settings window. The 'Logon/Logoff' option is selected under the 'Account Logon' category, which is highlighted with a green box.

You need to know when someone accesses files in the c:\temp directory. Auditing is turned on for this directory. You need to enable the **[answer choice]** Advanced Audit Policy to log these events.

A screenshot of the Windows Security settings window. The 'System' option is selected under the 'Object Access' category, which is highlighted with a green box.

NEW QUESTION 44

You need to limit the programs that can run on client computers to a specific list. Which technology should you implement?

- A. Windows Security Center
- B. Security Accounts Manager
- C. System Configuration Utility
- D. AppLocker group policies

Answer: A

NEW QUESTION 46

Which two security settings can be controlled by using group policy? (Choose two.)

- A. Password complexity
- B. Access to the Run... command
- C. Automatic file locking
- D. Encrypted access from a smart phone

Answer: AB

Explanation:

Reference: <http://technet.microsoft.com/en-us/library/cc875814.aspx>

NEW QUESTION 50

Creating MD5 hash for files is an example of ensuring what?

- A. Confidentiality
- B. Availability
- C. Least privilege
- D. Integrity

Answer: D

Explanation:

The MD5 message-digest algorithm is a widely used cryptographic hash function producing a 128-bit (16-byte) hash value, typically expressed in text format as a 32 digit hexadecimal number. MD5 has been utilized in a wide variety of cryptographic applications, and is also commonly used to verify data integrity.

NEW QUESTION 53

HOTSPOT

For each of the following statements, select Yes if the statement is true. Otherwise, select No. Each correct selection is worth one point.

Answer Area

	Yes	No
Smart cards can be used in biometrics-based systems.	<input type="radio"/>	<input type="radio"/>
Smart cards can be read from distances of several inches to many yards.	<input type="radio"/>	<input type="radio"/>
Smart cards provide a means of securely storing data on the card.	<input type="radio"/>	<input type="radio"/>

- A. Mastered
- B. Not Mastered

Answer: A

Explanation:

Answer Area

	Yes	No
Smart cards can be used in biometrics-based systems.	<input checked="" type="radio"/>	<input type="radio"/>
Smart cards can be read from distances of several inches to many yards.	<input type="radio"/>	<input checked="" type="radio"/>
Smart cards provide a means of securely storing data on the card.	<input checked="" type="radio"/>	<input type="radio"/>

NEW QUESTION 57

HOTSPOT

For each of the following statements, select Yes if the statement is true. Otherwise, select No. Each correct selection is worth one point.

Answer Area

	Yes	No
By using NAP, administrators can place non-compliant computers onto restricted networks.	<input type="radio"/>	<input type="radio"/>
All computers that are not in compliance with NAP policies require manual intervention to be brought into compliance.	<input type="radio"/>	<input type="radio"/>
NAP can enforce that client computers are running a firewall.	<input type="radio"/>	<input type="radio"/>

- A. Mastered
- B. Not Mastered

Answer: A

Explanation:

Answer Area

	Yes	No
By using NAP, administrators can place non-compliant computers onto restricted networks.	<input checked="" type="radio"/>	<input type="radio"/>
All computers that are not in compliance with NAP policies require manual intervention to be brought into compliance.	<input type="radio"/>	<input checked="" type="radio"/>
NAP can enforce that client computers are running a firewall.	<input checked="" type="radio"/>	<input type="radio"/>

NEW QUESTION 60

What is the primary advantage of using Active Directory Integrated Zones?

- A. Zone encryption
- B. Password protection
- C. Non-repudiation
- D. Secure replication

Answer: D

Explanation:

Reference: <http://books.google.com/books?id=CXy-2LBZCVgC&pg=PA201&dq=%22Active+Directory+Integrated+Zones%22,+Secure+replication&hl=en&sa=X&ei=9s92U-v1KI-zyASjzILIDg&ved=0CE0Q6AEwAQ#v=onepage&q=%22Active%20Directory%20Integrated%20Zones%22%2C%20Secure%20replication&f=false>

NEW QUESTION 63

The WPA2 PreShared Key (PSK) is created by using a passphrase (password) and salting it with the WPS PIN.

Select the correct answer if the underlined text does not make the statement correct. Select "No change is needed" if the underlined text makes the statement correct.

- A. Service Set Identifier (SSID)
- B. Admin password
- C. WEP key
- D. No change is needed

Answer: A

NEW QUESTION 64

Which two are included in an enterprise antivirus program? (Choose two.)

- A. Attack surface scanning
- B. On-demand scanning
- C. Packet scanning
- D. Scheduled scanning

Answer: BD

NEW QUESTION 65

Cookies impact security by enabling: (Choose two.)

- A. Storage of Web site passwords.
- B. Higher security Web site protections.
- C. Secure Sockets Layer (SSL).
- D. Web sites to track browsing habits.

Answer: AD

Explanation:

Reference: http://en.wikipedia.org/wiki/HTTP_cookie

NEW QUESTION 67

The purpose of User Account Control (UAC) is to:

- A. Encrypt the user's account
- B. Limit the privileges of software
- C. Secure your data from corruption
- D. Facilitate Internet filtering

Answer: B

Explanation:

User Account Control (UAC) is a technology and security infrastructure introduced with Microsoft's Windows machines. It aims to improve the security of Microsoft Windows by limiting application software to standard user privileges until an administrator authorizes an increase or elevation. In this way, only applications trusted by the user may receive administrative privileges, and malware should be kept from compromising the operating system.

NEW QUESTION 71

You would implement a wireless intrusion prevention system to:

- A. Prevent wireless interference
- B. Detect wireless packet theft
- C. Prevent rogue wireless access points
- D. Enforce SSID broadcasting

Answer: C

Explanation:

Reference: http://en.wikipedia.org/wiki/Wireless_intrusion_prevention_system

NEW QUESTION 75

Coho Winery wants to increase their web presence and hires you to set up a new web server. Coho already has servers for their business and would like to avoid purchasing a new one.

Which server is best to use as a web server, considering the security and performance concerns?

- A. SQL Server
- B. File Server
- C. Domain Controller
- D. Application Server

Answer: C

NEW QUESTION 78

.....

THANKS FOR TRYING THE DEMO OF OUR PRODUCT

Visit Our Site to Purchase the Full Set of Actual 98-367 Exam Questions With Answers.

We Also Provide Practice Exam Software That Simulates Real Exam Environment And Has Many Self-Assessment Features. Order the 98-367 Product From:

<https://www.2passeasy.com/dumps/98-367/>

Money Back Guarantee

98-367 Practice Exam Features:

- * 98-367 Questions and Answers Updated Frequently
- * 98-367 Practice Questions Verified by Expert Senior Certified Staff
- * 98-367 Most Realistic Questions that Guarantee you a Pass on Your FirstTry
- * 98-367 Practice Test Questions in Multiple Choice Formats and Updatesfor 1 Year