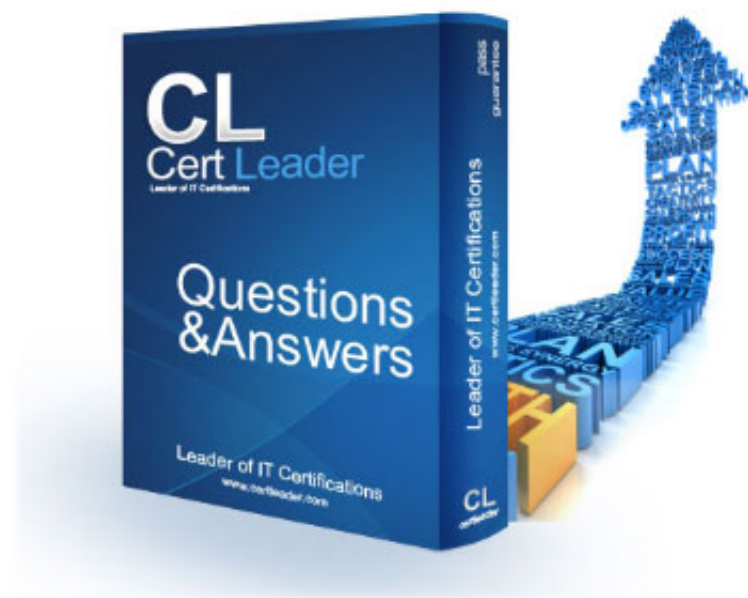


JN0-681 Dumps

Data Center - Professional (JNCIP-DC)

<https://www.certleader.com/JN0-681-dumps.html>



NEW QUESTION 1

Which protocol is used between VCF member devices to create a loop-free topology?

- A. LLDP
- B. MDTP
- C. RSTP
- D. VCCP

Answer: D

NEW QUESTION 2

Which protocol replicates forwarding information between MC-LAG peers?

- A. VCCP
- B. ICCP
- C. VRRP
- D. LLDP

Answer: B

NEW QUESTION 3

After configuring an IP fabric using EBGp as you protocol, you notice that not all of the routers are showing up in the routing tables. You have verified that all adjacencies have formed, and place and configured properly.

In this scenario, which statement is true?

- A. The routers have not been configured with the multipath multiple-as parameter.
- B. The routers have not been configured using the bfd-1 Liveness-detection parameter.
- C. The routers have not been configured using the multihop parameter.
- D. The routers have not been configured using the add-path parameter

Answer: A

NEW QUESTION 4

You have configured a new MC-LAG connection to a host. After committing the configuration, the MC-LAG link is not functioning properly.

```
{master:0}[edit interfaces ael]
user@gfx1# show
aggregated-ether-options {
  lacp {
    active;
    system-id 01:01:01:01:01:01;
    admin-key 1;
  }
  mc-ae {
    mc-ae-id 0;
    chassis-id 0;
    mode active-active;
    status-control active;
  }
}
unit 0 {
  family ethernet-switching {
    vlan {
      members vl5;
    }
  }
}
```

```
{master:0}[edit interfaces ael]
user@gfx2# show
aggregated-ether-options {
  lacp {
    active;
    system-id 01:01:01:01:01:01;
    admin-key 1;
  }
  mc-ae {
    mc-ae-id 1;
    chassis-id 1;
    mode active-active;
    status-control standby;
  }
}
unit 0 {
  family ethernet-switching {
    vlan {
      members vl5;
    }
  }
}
```

Referring to the exhibit, how would you solve this problem?

- A. Configure a system-id on qfx1 that is different from the system-id on qfx2
- B. Change the mc-ae is on qfx1 to 1
- C. Configure status-control on qfx2 to active
- D. Change the chassis on qfx1 to 1

Answer: B

NEW QUESTION 5

You want to configure redundant Layer 3 gateways

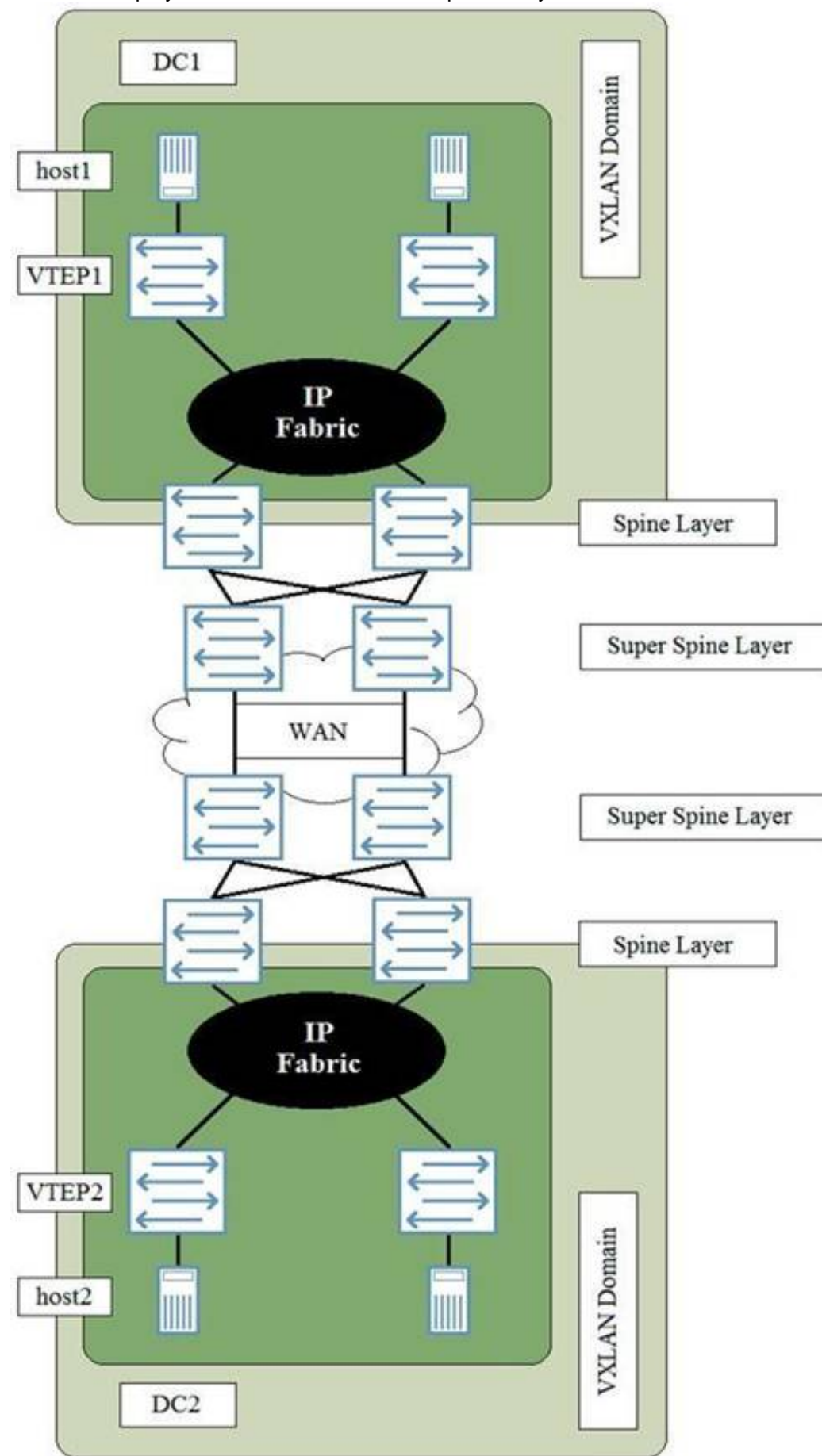
In this scenario, which two juniper best practices would accomplish this task? (Choose two.)

- A. Allowing Junos to dynamically create the virtual MAC address of the IRB interface
- B. Configuring both IRB interfaces manually with the same IP address
- C. Configuring both IRB interfaces manually with the same address
- D. Allowing Junos to dynamically create the virtual IP address of the IRB interface

Answer: BD

NEW QUESTION 6

You have deployed two data centers that require a Layer 2 stretch between host1 and host2.



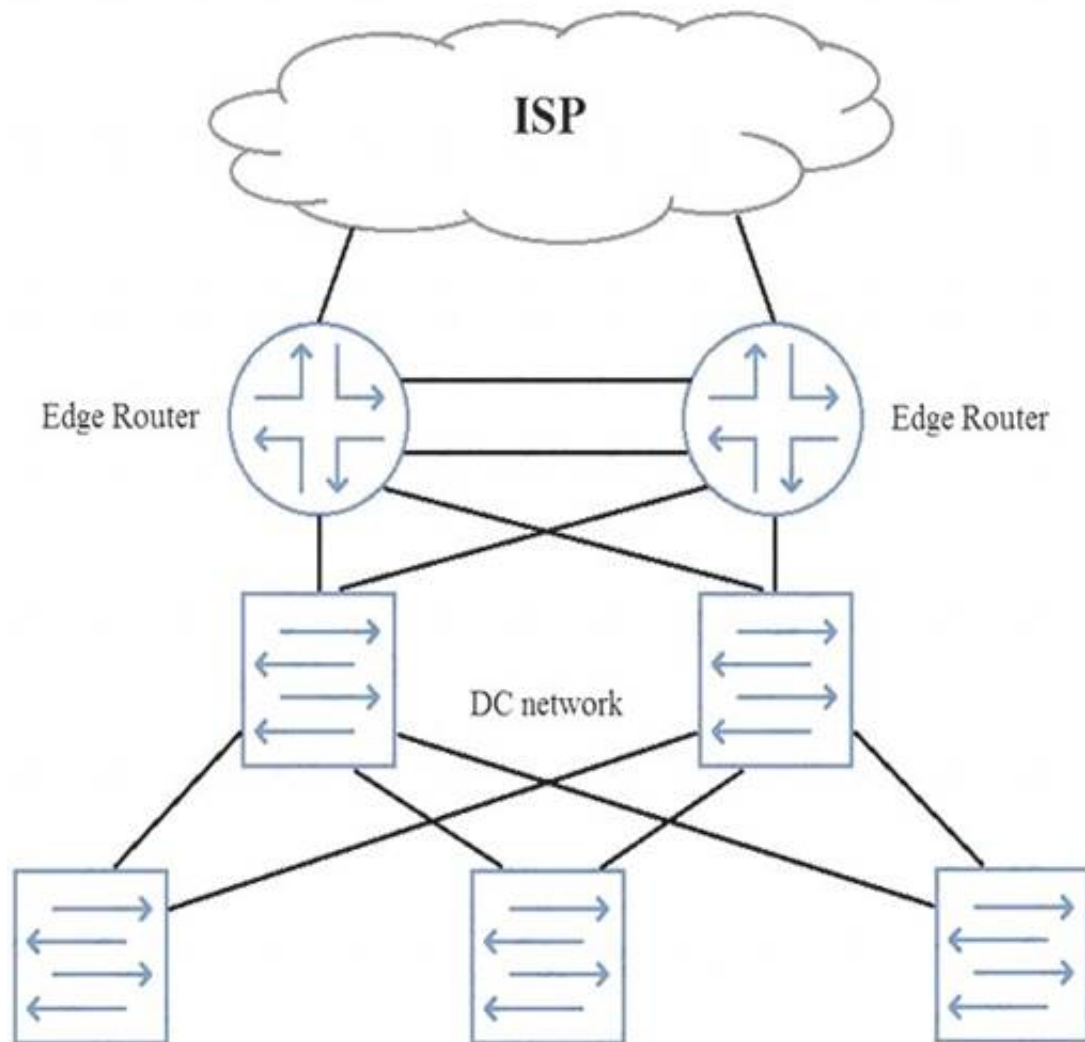
Referring to the exhibit, what does a Layer 2 stretch require?

- A. A VPLS WAN connection data centers
- B. A VXLAN tunnel originating on VTEP1 to VTEP2
- C. A VXLAN tunnel originating on the super Spine Layer in DC1 to the Super Spine Layer in DC2
- D. A VXLAN tunnel originating on the Spine Layer in DC1 to the Spine Layer in DC2.

Answer: B

NEW QUESTION 7

You need to add perimeter security to the network shown in the exhibit. All traffic must be inspected for attacks. The edge routers are using all available ports. Your solution must maintain both port and device resiliency.



In this scenario, which design would satisfy these requirements?

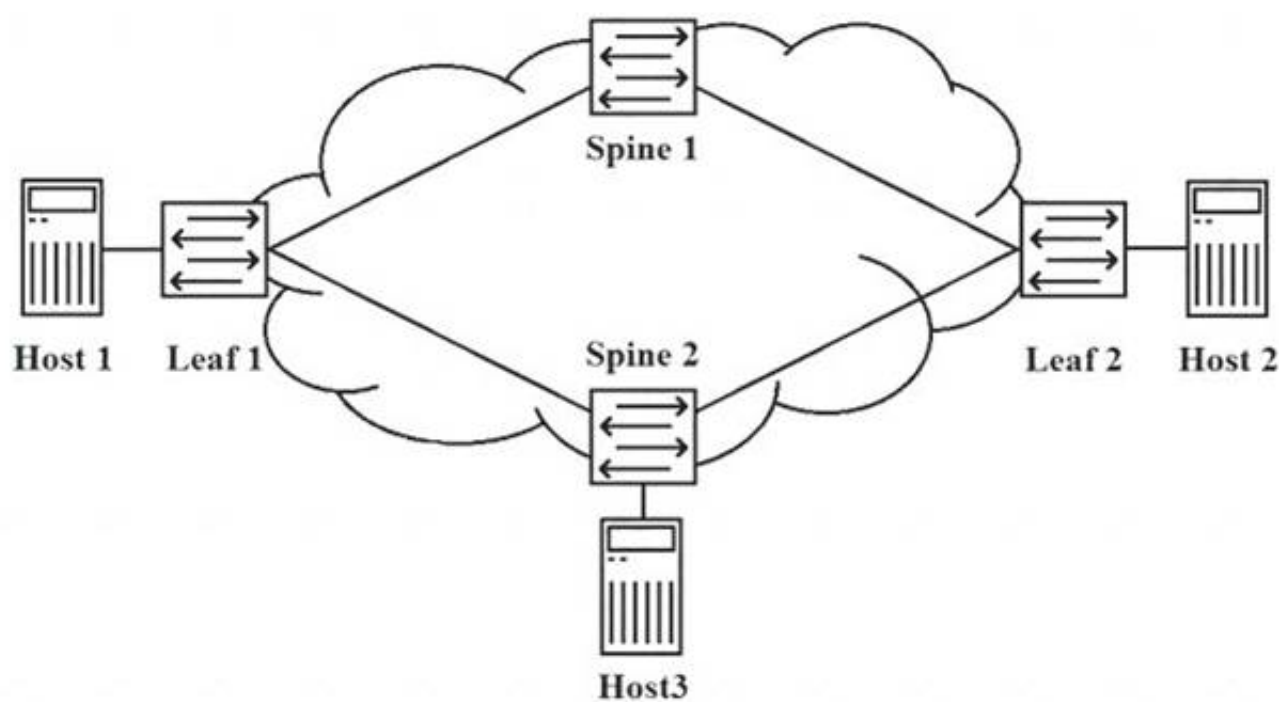
- A. one-arm SRX Series chassis cluster
- B. one-arm SRX Series device using LAG
- C. inline SRX Series chassis cluster
- D. inline SRX Series device using LAG

Answer: C

NEW QUESTION 8

Referring to the exhibit, Host 1 and Host 3 have exchanged traffic.

IP Fabric EVPN-VXLAN Overlay



In this scenario, which statement is true?

- A. Leaf 2 learn Host 1's MAC address through periodic updates from Spine 2
- B. Leaf 2 learn Host 1's MAC address when Host 3 learns Host 1's MAC address.
- C. Leaf 2 learn Host 1's MAC address when Leaf 1 queries Host 1.
- D. Leaf 2 does not learn Host 1's MAC address until Host1 and Host2 send traffic to each other

Answer: B

NEW QUESTION 9

You host a multitenant data center that runs VMware. You must perform deep packet inspection on all inter-tenant traffic that is flowing between the VMs within the same hypervisor. Your solution must provide the security services without needing to leave the physical device.

In this scenario, what should you do to solve this problem?

- A. Use separate vswitches to isolate each-tenant's network and use and use a vSRX device to evaluate inter-tenant traffic.
- B. Use VLANs to isolate each tenant's networks and use an SRX Series device to evaluate inter-tenant traffic.
- C. Use a VLANs to isolate each tenant's network and use IP tables to evaluates inter-tenant traffic.
- D. Use a vMX device to isolate each tenant's network and use firewall filters to evaluate inter-tenant traffic.

Answer: A

NEW QUESTION 10

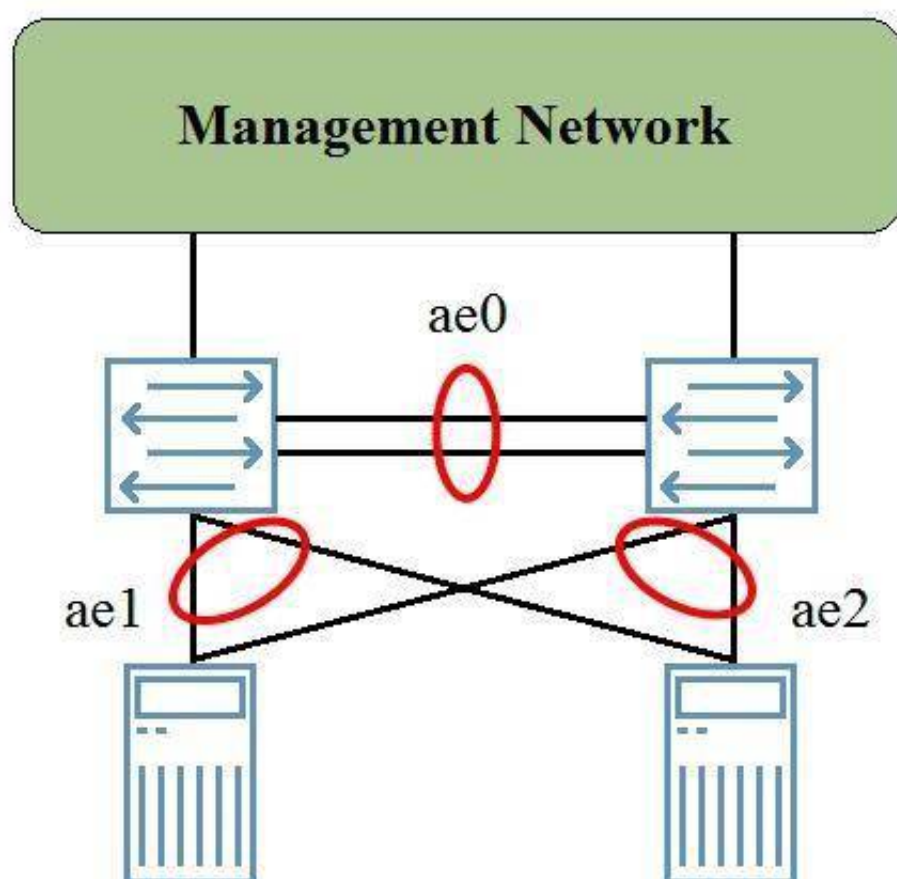
What are three functions supported by the Contrail Command user interface? (Choose two.)

- A. Integrated syslog collector
- B. Enabling VM-to-BMS bridging
- C. Configuring management domains
- D. Onboarding of an IP fabric
- E. Creating virtual network

Answer: ACE

NEW QUESTION 10

The MC-LAG group shown in the exhibit is providing high availability services for the directly connected servers. The backup liveness detection is applied to the ICL-PL link, however, when one of the members rebooted, there was traffic loss for a few seconds.



In this scenario, where should you apply the backup liveness detection?

- A. On the management interfaces
- B. On the ae2 interface
- C. On the ae1 interface
- D. On the ae0 interface

Answer: A

NEW QUESTION 15

Which two statements define the use of route targets and route distinguishers in an EVPN? (Choose two.)

- A. Route distinguishers ensure that routes from different client remain unique within the data center domain
- B. Route targets ensure that routes from different clients remain unique within the data center domain
- C. Route distinguishers identify the VRF into which the route should be placed
- D. Route targets identify the VRF into which the route should be placed

Answer: AD

NEW QUESTION 20

You are designing a Layer 3 fabric underlay using EBGp. You will implement an E VPN-signaled VXLAN overlay on the Layer 3 fabric. In this scenario, what must you do in the underlay to ensure that the VXLAN overlay will be able to function properly?

- A. The underlay should support the PIM protocol
- B. Each device in the underlay should advertise its loopback address
- C. The underlay should be configured with a separate VRF for each potential tenant
- D. The underlay should advertise the host connected interlaces on all leaf device

Answer: B

NEW QUESTION 22

You are asked to manage the oversubscription ratio of your spine and leaf IP fabric. You determine that you are at a 3:1 ratio of downstream to upstream traffic and must achieve a 1.1ratio.

In this scenario, which two actions would you take to achieve this goal? (Choose two.)

- A. Reduce the number of leaf nodes on your design.
- B. Increase the number of spine nodes in your design.
- C. Increase the number of server facing ports that each leaf node uses to carry traffic.
- D. Reduce the number of server facing that each leaf node uses to carry traffic.

Answer: BD

NEW QUESTION 27

You are asked to enable plug-and-play line card switches in an active VCF without making any future Junos configuration charges. You are also required to ensure that all new line card are automatically upgrade to the correct Junos version without any manual intervention.

In this scenario, which two actions will accomplish this task? (Choose two.)

- A. Set the virtual Chassis as auto-provisioned before the line cars are inserted.
- B. Ensure that the newly instead card's MAC addresses are present in the DHCP configuration for ZTP.
- C. Set the Virtual Chassis as per-provision before the line are inserted.
- D. Configure the auto-sw-update parameter on the VCF before inserting new line cards.

Answer: AD

NEW QUESTION 31

Which EVPN router type prevents BUM traffic from looping back to a multihued host?

- A. Ethernet segment router
- B. IP prefix route
- C. Ether auto discovery route
- D. Inclusive multicast-Ethernet tag route

Answer: C

NEW QUESTION 34

You have a site with thousands of MAC addresses multihomed to two leaf nodes in an EVPN VXLAN. In this scenario, which EVPN feature provides fast network convergence in the event of a leaf node link failure?

- A. Fast rerouter
- B. BGP Additional Paths
- C. Ethernet Autodiscovery
- D. Bidirectional Forwarding detection

Answer: C

NEW QUESTION 36

Which statement is true about a Data center interconnect over an IP network?

- A. Layer 2 data must traverse a point-to-point
- B. Layer 2 data must traverse an MPLS LSP.
- C. Layer 2 data must be encapsulated.
- D. Layer 3 data must be encapsulated

Answer: C

NEW QUESTION 39

A company wants to expect their hosting business and is seeking solutions to supported multiple tenants. Each tenant should be able to configure their own logical interfaces. Also, based on customer needs, all routing features must be supported.

What will satisfy the customer's requirements?

- A. Bridge domains
- B. Tenant systems
- C. Logical systems
- D. Routing instances

Answer: C

NEW QUESTION 40

You work in a data center where VMs and hosts are frequently moved. Your design needs to eliminate inefficient traffic flows.

In this scenario, which two solutions will satisfy this requirement? (Choose two.)

- A. VXLAN

- B. EVPN
- C. VMTO
- D. VPLS

Answer: BC

NEW QUESTION 42

What are two methods used to scale an IBGP IP Fabric? (Choose two.)

- A. Spanning tree
- B. Redundant trunk groups
- C. Route reflection
- D. Confederations

Answer: CD

NEW QUESTION 43

Which two combinations are supported when configuring a Virtual Chassis Fabric? (Choose two.)

- A. Four spine nodes and 20 leaf nodes
- B. Four spine nodes with 16 leaf nodes
- C. two spine nodes and 16 leaf nodes
- D. Two spine and 28 leaf nodes

Answer: BC

NEW QUESTION 47

You are asked to deploy 20 QFX Series devices using ZTP. Each QFX5100 requires a TFTP server. In this scenario, which two components must you configure on the DHCP Server? (Choose two.)

- A. The MAC address of the TFTP server
- B. The IP address of the TFTP server
- C. The MAC address of each QFX5100
- D. The MAC address of each TFTP QFX5100

Answer: AB

NEW QUESTION 48

You are designing a network for a small data center.

In this scenario, which underlay protocol allows for the simplest implementation?

- A. EIGRP
- B. OSPF
- C. IS-IS
- D. MPLS

Answer: B

NEW QUESTION 49

Your manager asks you to secure ARP and DHCP traffic across your local Ethernet links. In this scenario, which technology will accomplish this task?

- A. SSL
- B. MACsec
- C. IPsec
- D. A firewall filter

Answer: B

NEW QUESTION 50

What is the endpoint of a VXLAN tunnel?

- A. DLCI
- B. VTEP
- C. LSR
- D. VCF

Answer: B

NEW QUESTION 53

You are configuring an IP Fabric in your data center and you are trying to load-balance traffic across multiple equal-cost BGP routes. You have enabled multipath, but the traffic is not being load-balanced.

```
user@switch> show route 10.1.2.0/24

inet.0: 11 destinations, 13 routes (11 active,
holddown, 0 hidden)
+ = Active Route, - = Last Active, * = Both

10.1.2.0/24          *[BGP/170] 01:21:05,
localpref 100
                    AS path: 64516 I,
validation-state: unverified
                    to 172.16.3.1 via ge-
0/0/1.0
                    > to 172.16.5.1 via ge-
0/0/2.0
                    [BGP/170] 01:09:08,
localpref 100
                    AS path: 64515 I,
validation-state: unverified
                    > to 172.16.3.1 via ge-
0/0/1.0

user@switch> show route forwarding-table
destination 10.1.2.0/24
Routing table: default.inet
Internet:
Destination          Type RtRef Next hop
                    Type Index   NhRef Netif
10.1.2.0/24          user    0 172.16.5.1
                    ucst    574  4 ge-0/0/2.0
...

user@switch> show configuration policy-options
policy-statement load-balance {
    term lb {
        then {
            load-balance per-packet;
            accept;
        }
    }
}
```

Referring to the exhibit, what will solve this problem?

- A. You should apply load-balance policy as an import policy to the forwarding table
- B. You should apply the load-balance policy as an export policy to the forwarding table
- C. You should apply the load-balance policy as an export policy to the BGP neighbor
- D. You should apply the load-balance policy as an export policy for the BGP neighbor

Answer: B

NEW QUESTION 56

You are creating a new EVPN and are asked to selectively accept certain MAC advertisement routers from your EVPN peers using VXLAN Encapsulation. Which statements is correct in this scenario?

- A. You can use VRF policies and route distinguisher values to filter out unwanted routes.
- B. You can use VBRF import policies and community values to filter out unwanted routes.
- C. You can use MAC filtering to filter out unwanted routes.
- D. You can use firewall filters to filters out unwanted routes

Answer: B

NEW QUESTION 57

.....

Thank You for Trying Our Product

* 100% Pass or Money Back

All our products come with a 90-day Money Back Guarantee.

* One year free update

You can enjoy free update one year. 24x7 online support.

* Trusted by Millions

We currently serve more than 30,000,000 customers.

* Shop Securely

All transactions are protected by VeriSign!

100% Pass Your JN0-681 Exam with Our Prep Materials Via below:

<https://www.certleader.com/JN0-681-dumps.html>