



# Microsoft

## Exam Questions 98-366

MTA Networking Fundamentals

## About ExamBible

### *Your Partner of IT Exam*

## Found in 1998

ExamBible is a company specialized on providing high quality IT exam practice study materials, especially Cisco CCNA, CCDA, CCNP, CCIE, Checkpoint CCSE, CompTIA A+, Network+ certification practice exams and so on. We guarantee that the candidates will not only pass any IT exam at the first attempt but also get profound understanding about the certificates they have got. There are so many alike companies in this industry, however, ExamBible has its unique advantages that other companies could not achieve.

## Our Advances

### \* 99.9% Uptime

All examinations will be up to date.

### \* 24/7 Quality Support

We will provide service round the clock.

### \* 100% Pass Rate

Our guarantee that you will pass the exam.

### \* Unique Gurantee

If you do not pass the exam at the first time, we will not only arrange FULL REFUND for you, but also provide you another exam of your claim, ABSOLUTELY FREE!

#### NEW QUESTION 1

Your home computer is having problems accessing the Internet.

You suspect that your Internet router's DHCP service is not functioning, so you check your computer's IP address.

Which address indicates that your router's DHCP service is NOT functioning?

- A. 169.254.1.15
- B. 172.16.1.15
- C. 192.168.1.15
- D. 10.19.1.15

**Answer:** B

#### NEW QUESTION 2

What type of DNS record maps host names to addresses?

- A. Mail Exchanger (MX) DNS record
- B. Service (SRV) DNS record
- C. Host (A) DNS record
- D. Canonical (CNAME) DNS record

**Answer:** C

#### NEW QUESTION 3

This question requires that you evaluate the underlined text to determine if it is correct.

Each IPv4 address consists of a MAC address and data-link layer address.

Select the correct answer if the underlined text does not make the statement correct. Select "No change is needed" if the underlined text makes the statement correct.

- A. Network ID and a host ID
- B. DNS record and a default route
- C. 64-bit binary number divided into octets
- D. No change is needed

**Answer:** A

#### NEW QUESTION 4

Which command is used to verify that a server is connected to the network?

- A. IPCONFIG
- B. ROUTE
- C. PING
- D. CHECK

**Answer:** C

#### NEW QUESTION 5

Which of the following determines the media access method that is used in a network?

- A. Number of hosts connected to the network
- B. Number of domain servers on the segment
- C. Maximum speed of the media
- D. Topology and protocols

**Answer:** D

#### NEW QUESTION 6

In which OSI layer does routing occur?

- A. Transport
- B. Network
- C. Data Link
- D. Physical

**Answer:** B

#### NEW QUESTION 7

HOTSPOT

For each of the following statements, select Yes if the statement is true. Otherwise, select No. Each correct selection is worth one point.

Answer Area

	Yes	No
Dynamic Routing provides the ability to add networks automatically by learning them from other RIP routers.	<input type="radio"/>	<input type="radio"/>
Dynamic Routing provides the ability to automatically remove routes from the routing table when other RIP neighbors delete them.	<input type="radio"/>	<input type="radio"/>
Dynamic Routing provides the ability to select the best route based on routing metrics.	<input type="radio"/>	<input type="radio"/>

- A. Mastered
- B. Not Mastered

Answer: A

Explanation:

Answer Area

	Yes	No
Dynamic Routing provides the ability to add networks automatically by learning them from other RIP routers.	<input checked="" type="radio"/>	<input type="radio"/>
Dynamic Routing provides the ability to automatically remove routes from the routing table when other RIP neighbors delete them.	<input checked="" type="radio"/>	<input type="radio"/>
Dynamic Routing provides the ability to select the best route based on routing metrics.	<input checked="" type="radio"/>	<input type="radio"/>

NEW QUESTION 8

This question requires that you evaluate the underlined text to determine if it is correct.  
Every router today is TCP/IP enabled, which is an industry-standard protocol that you use on the Internet and for local addressing.  
Select the correct answer if the underlined text does not make the statement correct. Select 'No change is needed' if the underlined text makes the statement correct.

- A. HTTP
- B. FTP
- C. SNMP
- D. No change is needed

Answer: D

NEW QUESTION 9

The service that resolves fully qualified domain names (FQDN) to IP addresses is:

- A. Windows Internet Name Service (WINS).
- B. Domain Name Service (DNS).
- C. Internet Service Provider (ISP).
- D. Address Resolution Protocol (ARP).

Answer: B

NEW QUESTION 10

HOTSPOT  
For each of the following statements, select Yes if the statement is true. Otherwise, select No. Each correct selection is worth one point.

Answer Area

	Yes	No
An IPv4 address consists of 64 bits.	<input type="radio"/>	<input type="radio"/>
It is standard practice to divide the binary bits of an IPv4 address into 8-bit fields named octets.	<input type="radio"/>	<input type="radio"/>
The value of any IPv4 octet can be from 0 to 256.	<input type="radio"/>	<input type="radio"/>

- A. Mastered
- B. Not Mastered

Answer: A

Explanation:

Answer Area

	Yes	No
An IPv4 address consists of 64 bits.	<input type="radio"/>	<input checked="" type="radio"/>
It is standard practice to divide the binary bits of an IPv4 address into 8-bit fields named octets.	<input checked="" type="radio"/>	<input type="radio"/>
The value of any IPv4 octet can be from 0 to 256.	<input type="radio"/>	<input checked="" type="radio"/>

NEW QUESTION 10

Which network does the IP address 220.100.100.100 belong to?

- A. 220.100.100.0/24
- B. 220.100.100.1/24
- C. 255.255.255.0/24
- D. 255.255.255.1/24

Answer: A

NEW QUESTION 13

HOTSPOT

For each of the following statements, select Yes if the statement is true. Otherwise, select No. Each correct selection is worth one point.

Answer Area

	Yes	No
A switch sends unicast packets to one destination port only.	<input type="radio"/>	<input type="radio"/>
A switch floods ports if it does not know where to send a packet.	<input type="radio"/>	<input type="radio"/>
A switch sends broadcast packets to the uplink port only.	<input type="radio"/>	<input type="radio"/>

- A. Mastered
- B. Not Mastered

Answer: A

Explanation:

Answer Area

	Yes	No
A switch sends unicast packets to one destination port only.	<input checked="" type="radio"/>	<input type="radio"/>
A switch floods ports if it does not know where to send a packet.	<input checked="" type="radio"/>	<input type="radio"/>
A switch sends broadcast packets to the uplink port only.	<input type="radio"/>	<input checked="" type="radio"/>

NEW QUESTION 17

Which Microsoft network service can you use to establish a connection to a corporate LAN without any user action?

- A. VPN
- B. Remote Desktop
- C. DirectAccess
- D. Nap

Answer: A

NEW QUESTION 19

DRAG DROP

Match the IPv4 address type to the corresponding definition.

To answer, drag the appropriate definition from the column on the left to the address type on the right. Each definition may be used once, more than once, or not at all. Each correct match is worth one point.

Definitions

assigned to a single network interface located on a specific subnet on the network and used for one-to-one communications

assigned to the variable portion of an IPv4 address that is used to identify a network node's interface on a subnet

assigned to one or more network interfaces located on various subnets on the network and used for one-to-many communications

assigned to all network interface located on a subnet on the network and used for one-to-everyone-on-a-subnet communications

Answer Area

Multicast

Definition

Broadcast

Definition

Unicast

Definition

- A. Mastered
- B. Not Mastered

Answer: A

Explanation:



Definitions	Answer Area
assigned to a single network interface located on a specific subnet on the network and used for one-to-one communications	<b>Multicast</b> assigned to one or more network interfaces located on various subnets on the network and used for one-to-many communications
assigned to the variable portion of an IPv4 address that is used to identify a network node's interface on a subnet	<b>Broadcast</b> assigned to all network interface located on a subnet on the network and used for one-to-everyone-on-a-subnet communications
assigned to one or more network interfaces located on various subnets on the network and used for one-to-many communications	<b>Unicast</b> assigned to a single network interface located on a specific subnet on the network and used for one-to-one communications
assigned to all network interface located on a subnet on the network and used for one-to-everyone-on-a-subnet communications	

**NEW QUESTION 21**

Which of these addresses is a multicast address?

- A. 127.0.0.1
- B. 169.254.0.1
- C. 192.168.0.1
- D. 224.0.0.1

**Answer:** D

**NEW QUESTION 25**

To protect a network when it is connected to the Internet, you should use a:

- A. Bridge
- B. Firewall
- C. Switch
- D. Router

**Answer:** B

**NEW QUESTION 27**

A private network that allows members of an organization to exchange data is an:

- A. Extranet
- B. Ethernet
- C. Intranet
- D. Internet

**Answer:** C

**NEW QUESTION 28**

This question requires that you evaluate the underlined text to determine if it is correct. In a wireless network that requires an SSL certificate, WEP handles the SSL certificate.  
Select the correct answer if the underlined text does not make the statement correct. Select 'No change is needed' if the underlined text makes the statement correct.

- A. 802.1X
- B. WPA2-PSK
- C. WPA-PSK
- D. No change is needed

**Answer:** A

**NEW QUESTION 32**

DRAG DROP

Match each protocol to its description.

To answer, drag the appropriate protocol from the column on the left to its description on the right. Each protocol may be used once, more than once, or not at all.

Each correct match is worth one point.

Protocols		Answer Area	
TCP		connectionless, message-based protocol with best-effort service	Protocol
ICMP		connection-oriented protocol with guaranteed service	Protocol
ARP	⋮	resolves IP addresses to MAC addresses	Protocol
UDP			
IGMP			

- A. Mastered
- B. Not Mastered

Answer: A

Explanation:

Protocols		Answer Area	
TCP		connectionless, message-based protocol with best-effort service	UDP
ICMP		connection-oriented protocol with guaranteed service	TCP
ARP	⋮	resolves IP addresses to MAC addresses	ARP
UDP			
IGMP			

NEW QUESTION 36

If a router cannot determine the next hop for a packet, the router will:

- A. Forward the packet to the default route.
- B. Send the packet back to the packet's source.
- C. Broadcast the packet.
- D. Store the packet in the memory buffer.

Answer: A

NEW QUESTION 38



Which of the following uses a tunneling protocol?

- A. Internet
- B. VPN
- C. Extranet
- D. VLAN

Answer: :B

NEW QUESTION 41

Which of the following represents a Media Access Control (MAC) address?

- A. GV:ZC:KK:DK:FZ:CA
- B. 255.255.255.0
- C. 05:35:AB:6E:AI:25
- D. 127.0.0.1

Answer: C

NEW QUESTION 42

The default port used for telnet is:

- A. 23
- B. 25
- C. 80
- D. 8080

Answer: A

NEW QUESTION 44

DRAG DROP

Match the OSI layer to its corresponding description.

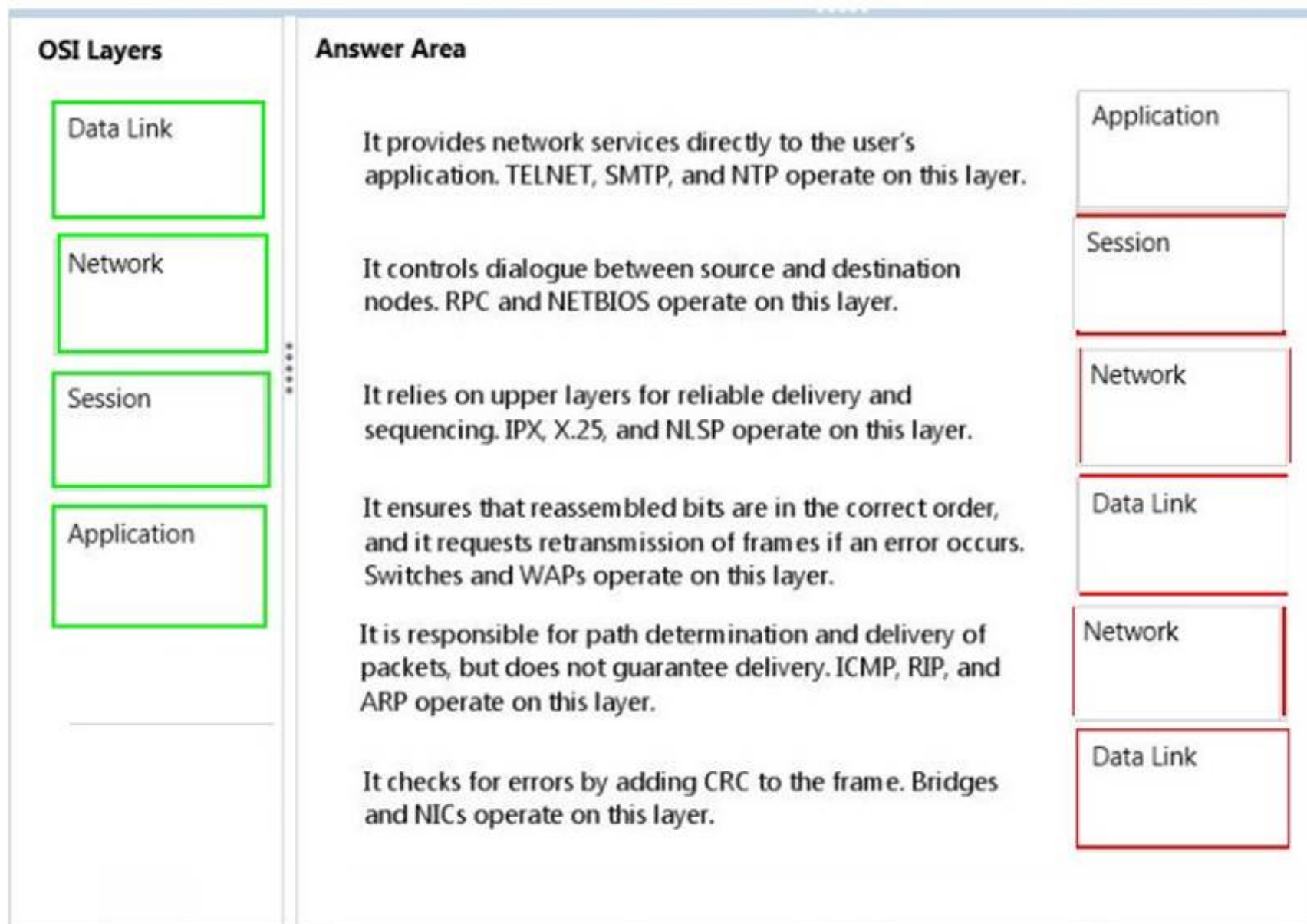
To answer, drag the appropriate OSI layer from the column on the left to its description on the right. Each OSI layer may be used once, more than once, or not at all. Each correct match is worth one point.

OSI Layers	Answer Area
Data Link	<div>It provides network services directly to the user's application. TELNET, SMTP, and NTP operate on this layer.</div> <div>OSI Layer</div>
Network	<div>It controls dialogue between source and destination nodes. RPC and NETBIOS operate on this layer.</div> <div>OSI Layer</div>
Session	<div>It relies on upper layers for reliable delivery and sequencing. IPX, X.25, and NLSP operate on this layer.</div> <div>OSI Layer</div>
Application	<div>It ensures that reassembled bits are in the correct order, and it requests retransmission of frames if an error occurs. Switches and WAPs operate on this layer.</div> <div>OSI Layer</div>
	<div>It is responsible for path determination and delivery of packets, but does not guarantee delivery. ICMP, RIP, and ARP operate on this layer.</div> <div>OSI Layer</div>
	<div>It checks for errors by adding CRC to the frame. Bridges and NICs operate on this layer.</div> <div>OSI Layer</div>

- A. Mastered
- B. Not Mastered

Answer: A

Explanation:



#### NEW QUESTION 45

This question requires that you evaluate the underlined text to determine if it is correct. WEP wireless encryption is the most susceptible to interception and decryption.

Select the correct answer if the underlined text does not make the statement correct. Select 'No change is needed' if the underlined text makes the statement correct

- A. WPA-AES
- B. WPA2
- C. WPA-PSK
- D. No change is needed

**Answer:** D

#### NEW QUESTION 50

What are two characteristics of fiber optic cable? (Choose two.)

- A. Conducts electricity
- B. Requires metal conduit
- C. Supports splicing
- D. Requires a polish for end connectors

**Answer:** AC

#### NEW QUESTION 51

In which physical network topology is each computer connected to a central point?

- A. Star
- B. Mesh
- C. Ring
- D. Bus

**Answer:** A

#### NEW QUESTION 55

What are two characteristics of the CSMA/CD access method? (Choose two.)

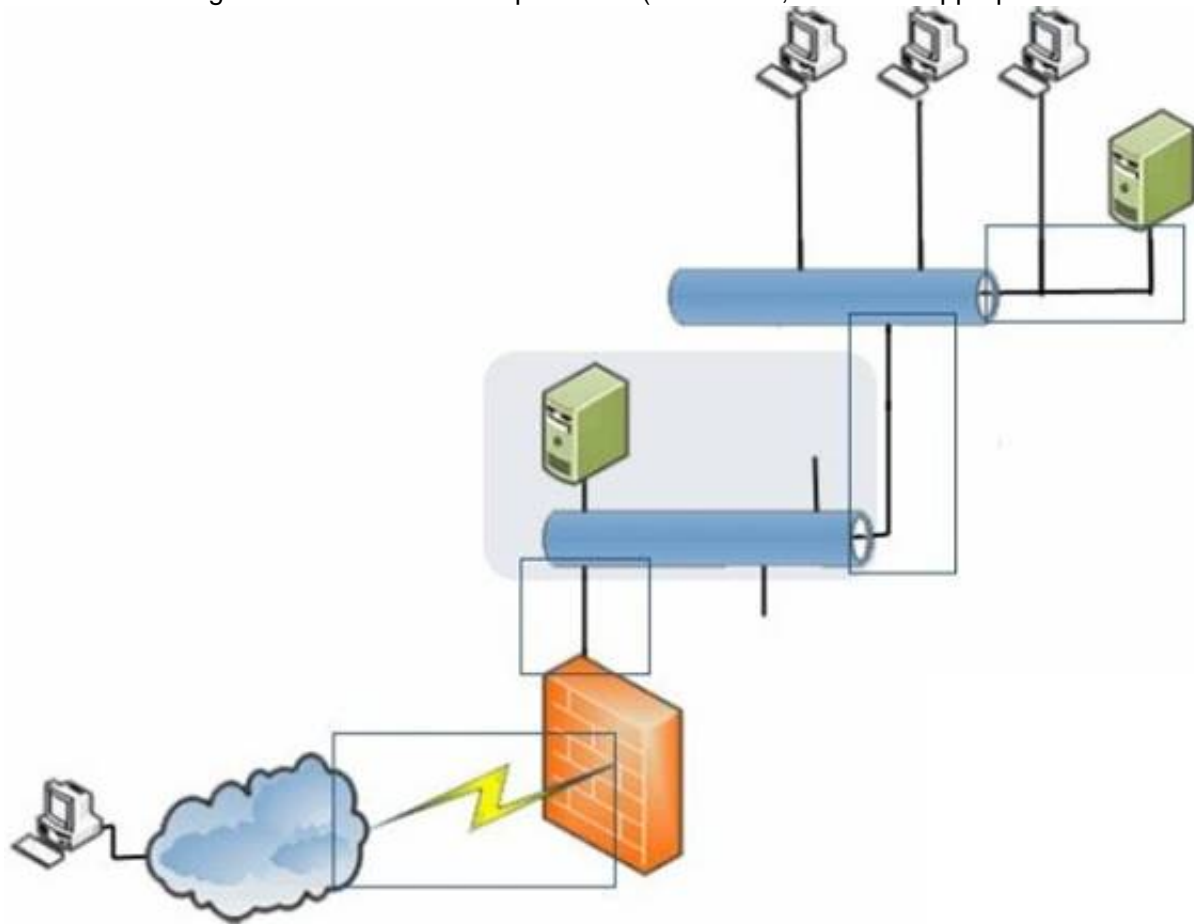
- A. It checks to see if a collision has been detected.
- B. It does a round robin search for requests to transmit from all nodes on the network.
- C. It signals its intent to transmit on the network.
- D. It waits until the transmission medium is idle.

**Answer:** BC

**NEW QUESTION 60**

**HOTSPOT**

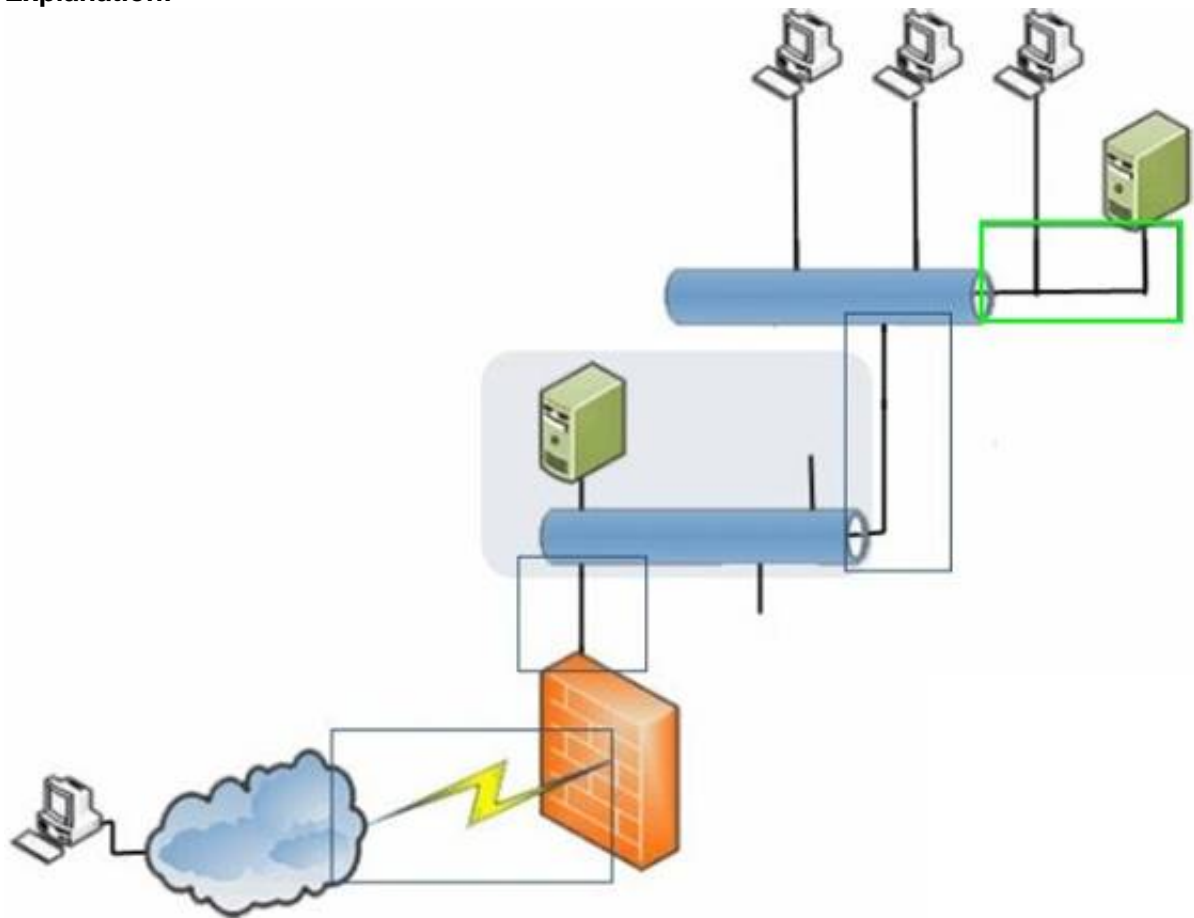
Where in the diagram is a T3 connection possible? (To answer, select the appropriate connection in the diagram in the answer area.)



- A. Mastered
- B. Not Mastered

**Answer:** A

**Explanation:**



**NEW QUESTION 64**

What is a similarity between Layer 2 and Layer 3 switches?

- A. Both provide a high level of security to the network.
- B. Both use logical addressing to forward transmissions.
- C. Both forward packets onto the network.
- D. Both allow the implementation of VLANs.

**Answer:** C

**NEW QUESTION 67**

To which IP configuration does the CIDR notation 192.168.1.1/25 refer?

- A. 192.168.1.1 255.255.255.64

- B. 192.168.1.1 255.255.255.1
- C. 192.168.1.1 255.255.255.32
- D. 192.168.1.1 255.255.255.256
- E. 192.168.1.1 255.255.255.128

**Answer:** E

#### NEW QUESTION 71

The default subnet mask for a Class B network is:

- A. 0.0.0.255
- B. 0.0.255.255
- C. 255.0.0.0
- D. 255.255.0.0

**Answer:** D

#### NEW QUESTION 76

The top-level domain of [www.adventureworks.com](http://www.adventureworks.com) is:

- A. www
- B. adventureworks
- C. adventureworks.com
- D. com

**Answer:** D

#### NEW QUESTION 78

Attenuation in a wireless network signal is a result of:

- A. Number of wireless nodes connected.
- B. Distance from the access point.
- C. Interference from cellular phones.
- D. Encryption of the signal.

**Answer:** B

#### NEW QUESTION 79

The default port used for SMTP is:

- A. 23
- B. 25
- C. 80
- D. 8080

**Answer:** B

#### NEW QUESTION 84

What are two differences between switches and hubs? (Choose two.)

- A. Switches are slower than hubs because of the extra addressing functions that switches perform.
- B. Switches send data to all of the computers that are connected to them for efficiency.
- C. Switches are capable of sending and receiving data at the same time.
- D. Switches identify the intended destination of the data that they receive.

**Answer:** BC

#### NEW QUESTION 88

Which of the following services masks internal IP addresses from outside the network?

- A. DHCP
- B. WINS
- C. NAT
- D. DNS

**Answer:** C

#### NEW QUESTION 93

HOTSPOT

You are trying to access a music sharing service on the Internet. The service is located at the IP address 173.194.75.105. You are experiencing problems connecting.

You run a trace route to the server and receive the output shown in the following image:



```
Command Prompt

C:\>tracert -d 173.194.75.105

Tracing route to 173.194.75.105 over a maximum of 30 hops

  1  <1 ms    <1 ms    <1 ms    10.0.0.1
  2  25 ms    29 ms    29 ms    174.57.168.1
  3   9 ms     9 ms     9 ms    68.85.76.249
  4  10 ms     9 ms     9 ms    68.86.210.25
  5  14 ms    15 ms    18 ms    68.86.92.161
  6  15 ms    16 ms    13 ms    68.86.86.142
  7  14 ms    14 ms    14 ms    75.149.231.62
  8  14 ms    15 ms    15 ms    209.85.252.80
  9  17 ms    16 ms    17 ms    72.14.236.146
 10 27 ms    28 ms    28 ms    209.85.241.222
 11 26 ms    25 ms    26 ms    216.239.48.157
 12 *        *        *        Request timed out.
 13 27 ms    26 ms    25 ms    173.194.75.105

Trace complete.

C:\>
```

Use the drop-down menus to select the answer choice that completes each statement. Each correct selection is worth one point.

Answer Area

Each hop in the trace route is a [answer choice]

router.  
switch.  
firewall.

The trace route completed [answer choice]

successfully.  
unsuccessfully.  
with an unknown status.

- A. Mastered
- B. Not Mastered

Answer: A

Explanation:

Answer Area

Each hop in the trace route is a [answer choice]

router.  
switch.  
firewall.

The trace route completed [answer choice]

successfully.  
unsuccessfully.  
with an unknown status.

NEW QUESTION 98

This question requires that you evaluate the underlined text to determine if it is correct.  
IPSec policies for two machines on a LAN can be modified by using the IPSec policy snap- in on Windows 7.  
Select the correct answer if the underlined text does not make the statement correct. Select 'No change is needed' if the underlined text makes the statement correct.

- A. Windows Firewall with Advanced Security snap-in
- B. LAN adapter properties
- C. Remote Access snap-in
- D. No change is needed

**Answer:** A

**NEW QUESTION 101**

Which wireless authentication method provides the highest level of security?

- A. Wired Equivalency Privacy (WEP)
- B. IEEE 802.11n
- C. Wi-Fi Protected Access (WPA)
- D. IEEE 802.11a

**Answer:** C

**NEW QUESTION 106**

In local area network (LAN) topologies, the primary media access methods are: (Choose two.)

- A. Contention
- B. Negotiation
- C. Kerberos
- D. Token passing

**Answer:** AD

**NEW QUESTION 107**

When a client's DHCP-issued address expires, the client will:

- A. Select a new address and request approval from the DHCP server.
- B. Require manual configuration with a static IP address.
- C. Attempt to obtain a new address by broadcasting.
- D. Continue to use the address until it is notified to stop.

**Answer:** C

**NEW QUESTION 110**

One reason to replace an unmanaged switch with a managed switch is to:

- A. Manage the routing tables.
- B. Support multiple VLANs.
- C. Reduce collision domains.
- D. Route between networks,

**Answer:** B

**NEW QUESTION 114**

Which subnet mask is valid?

- A. 255.255.255.240
- B. 255.255.255.228
- C. 255.255.255.164
- D. 255.255.255.245

**Answer:** A

**NEW QUESTION 118**

Which two are published IEEE 802.11 wireless transmission standards? (Choose two.)

- A. 802.11f
- B. 802.11g
- C. 802.11k
- D. 802.11m
- E. 802.11n

**Answer:** BE

**NEW QUESTION 123**

Which of these is an application layer protocol?

- A. TCP
- B. FTP
- C. IP
- D. UDP

**Answer:** B

**NEW QUESTION 125**



You run the ipconfig command. The output is shown in the following image:

```
Windows IP Configuration

Wireless LAN adapter Wireless Network Connection 3:

    Media State . . . . . : Media disconnected
    Connection-specific DNS Suffix . :

Wireless LAN adapter Wireless Network Connection:

    Connection-specific DNS Suffix . :
    IPv6 Address. . . . . : 2602:304:aecf:a929:cce2:4be1:be2a:260
    Temporary IPv6 Address. . . . . : 2602:304:aecf:a929:f09e:893:6519:6a2
    Link-local IPv6 Address . . . . . : fe80::cce2:4be1:be2a:260%17
    IPv4 Address. . . . . : 192.168.1.65
    Subnet Mask . . . . . : 255.255.255.0
    Default Gateway . . . . . :
```

From these settings, you can tell that the computer:

- A. Will have limited Internet access
- B. Will have full Internet access
- C. Will not be able to access the Internet
- D. Will not be able to access the local network

**Answer:** A

#### NEW QUESTION 129

A router's static route is set by the:

- A. Adjacent network
- B. Next upstream router
- C. Network administrator
- D. Routing protocol

**Answer:** C

#### NEW QUESTION 134

Teredo tunneling is a protocol that:

- A. Translates Internet Protocol version 4 (IPv4) to Internet Protocol version 6 (IPv6).
- B. Allows IPv6 connectivity through IPv4 devices.
- C. Provides VPN security.
- D. Dynamically allocates IPv6 addresses.

**Answer:** B

#### NEW QUESTION 138

A network that separates an organization's private network from a public network is a/an:

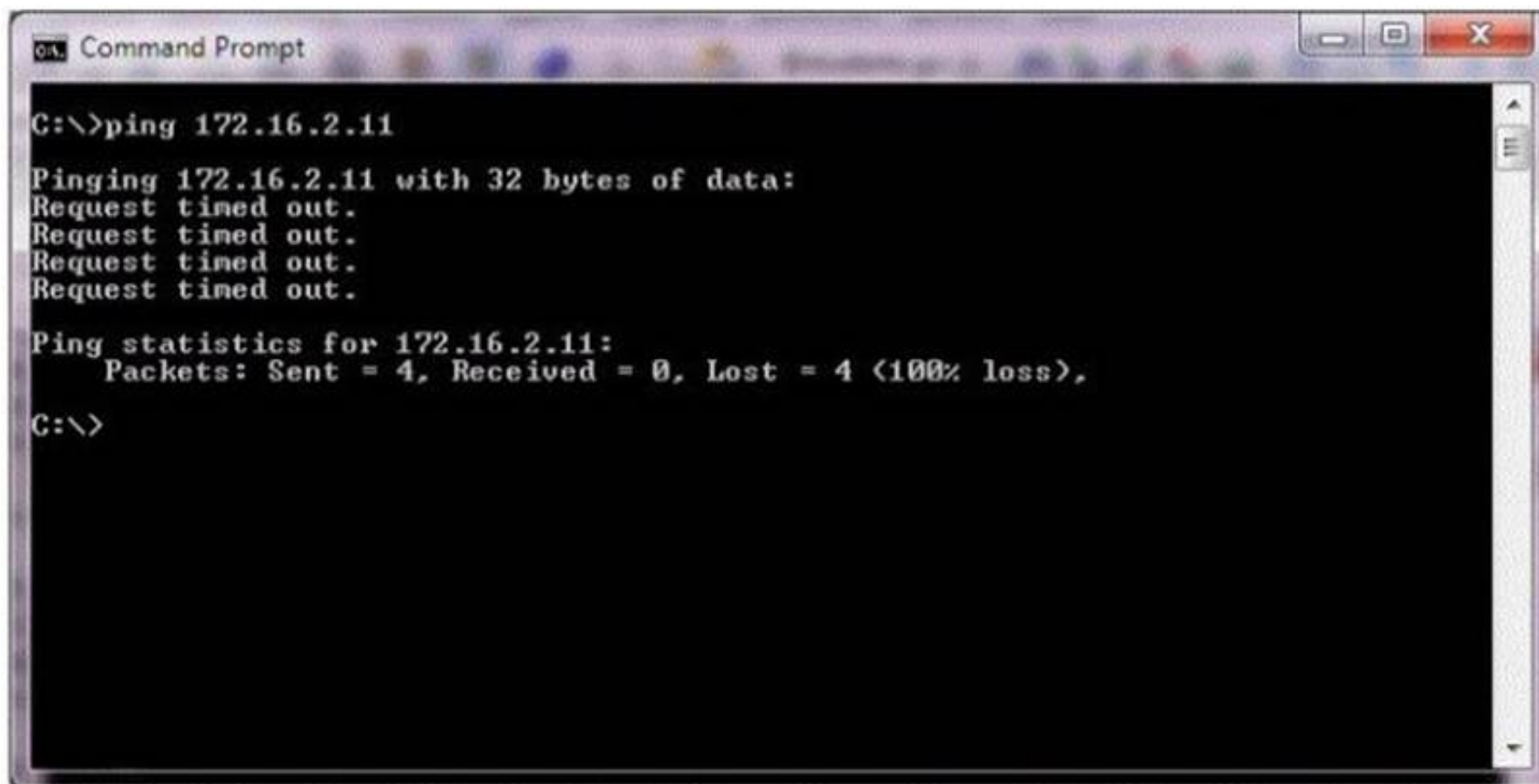
- A. Firewall
- B. Extranet
- C. Perimeter
- D. Internet

**Answer:** C

#### NEW QUESTION 139

HOTSPOT

You receive a call from a family member who is unable to connect to a game server. You learn that the server's IP is 172.16.2.11. To help, you ping the server and receive the information shown in the following image:



```

C:\>ping 172.16.2.11

Pinging 172.16.2.11 with 32 bytes of data:
Request timed out.
Request timed out.
Request timed out.
Request timed out.

Ping statistics for 172.16.2.11:
    Packets: Sent = 4, Received = 0, Lost = 4 (100% loss),

C:\>
    
```

Use the drop-down menus to select the answer choice that completes each statement. Each correct selection is worth one point.

Answer Area

The server [answer choice] your ping requests.

did not return  
 did return  
 may or may not have returned

The server status is [answer choice]

up.  
 down.  
 unknown.

- A. Mastered
- B. Not Mastered

Answer: A

Explanation:

Answer Area

The server [answer choice] your ping requests.

did not return  
did return  
 may or may not have returned

The server status is [answer choice]

up.  
 down.  
unknown.

#### NEW QUESTION 143

Which type of port is used to support VLAN traffic between two switches?

- A. Virtual port
- B. WAN port
- C. Trunk port
- D. LAN port

Answer: C

#### NEW QUESTION 148

This question requires that you evaluate the underlined text to determine if it is correct. According to the OSI model, encryption takes place on the transport layer. Select the correct answer if the underlined text does not make the statement correct. Select 'No change is needed' if the underlined text makes the statement correct.

- A. Presentation
- B. Network
- C. Application
- D. No change is needed

Answer: A

**NEW QUESTION 150**

What are two characteristics of a mesh network topology? (Choose two.)

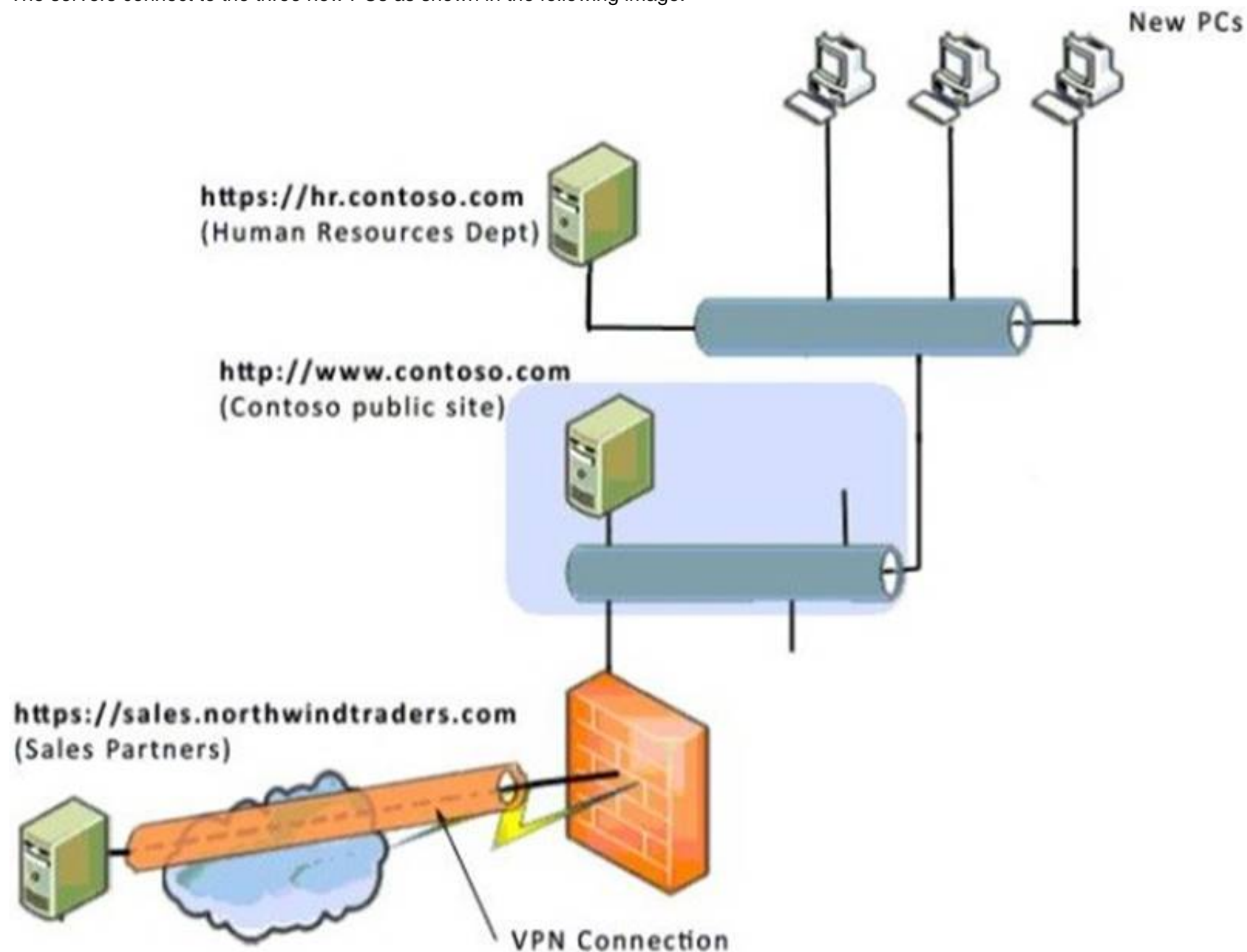
- A. It is fault tolerant because of redundant connections.
- B. Every node connects to every other node on the network.
- C. It works best for networks with a large number of nodes.
- D. It requires less cabling than either a star or ring topology.

**Answer:** AC

**NEW QUESTION 153**

**HOTSPOT**

You are an intern for Contoso Ltd. Your supervisor asks you to configure the security zones for three new PCs so that they are able to connect to two web servers. The servers connect to the three new PCs as shown in the following image:



Use the drop-down menus to select the answer choice that completes each statement. Each correct selection is worth one point.

**Answer Area**

The appropriate type of security zone for <https://sales.northwindtraders.com> is **[answer choice]**

▼

Restricted Sites.  
Local Intranet.  
Trusted Sites.

The appropriate type of security zone for <https://hr.contoso.com> is **[answer choice]**

▼

Restricted Sites.  
Local Intranet.  
Trusted Sites.

- A. Mastered
- B. Not Mastered

Answer: A

Explanation:

Answer Area

The appropriate type of security zone for <https://sales.northwindtraders.com> is **[answer choice]**

Restricted Sites.  
Local Intranet.  
Trusted Sites.

The appropriate type of security zone for <https://hr.contoso.com> is **[answer choice]**

Restricted Sites.  
Local Intranet.  
Trusted Sites.

NEW QUESTION 158

One advantage of dynamic routing is that it:

- A. Automatically maintains routing tables.
- B. Limits traffic derived from routing protocols.
- C. Reduces broadcast traffic.
- D. Automatically enables DHCP.

Answer: :A

NEW QUESTION 159

HOTSPOT

For each of the following statements, select Yes if the statement is true. Otherwise, select No. Each correct selection is worth one point.

Answer Area

	Yes	No
IPsec can be used to secure network communications between two machines.	<input type="radio"/>	<input type="radio"/>
IPsec can be used to secure network communication between two networks.	<input type="radio"/>	<input type="radio"/>
IPsec network traffic is always encrypted.	<input type="radio"/>	<input type="radio"/>

- A. Mastered
- B. Not Mastered

Answer: A

Explanation:



Answer Area

	Yes	No
IPsec can be used to secure network communications between two machines.	<input checked="" type="radio"/>	<input type="radio"/>
IPsec can be used to secure network communication between two networks.	<input checked="" type="radio"/>	<input type="radio"/>
IPsec network traffic is always encrypted.	<input type="radio"/>	<input checked="" type="radio"/>

NEW QUESTION 164

What is an example of a network device that associates a network address with a port?

- A. Switch
- B. Router
- C. Hub
- D. DSL modem

Answer: :C

NEW QUESTION 167

DRAG DROP

Order the layers of the OSI model:

Layers of OSI Model

Application

Data link

Network

Physical

Presentation

Session

Transport

Layers

Layer 1

Layer 2

Layer 3

Layer 4

Layer 5

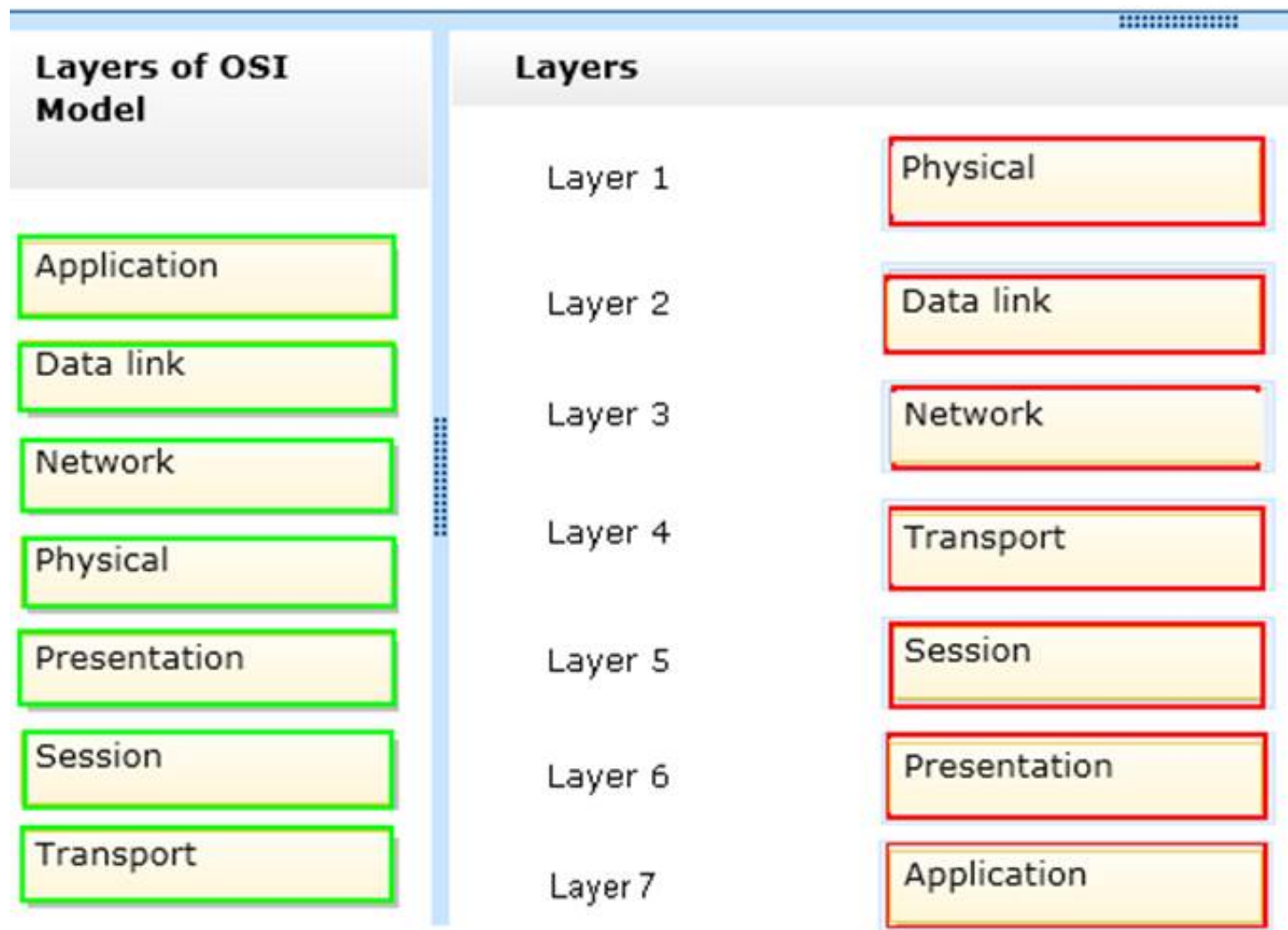
Layer 6

Layer 7

- A. Mastered
- B. Not Mastered

Answer: A

Explanation:



**NEW QUESTION 168**

Which of these factors has the biggest impact on data transmission speed in a wireless network?

- A. The access method used for the network
- B. The transmission standard of the equipment used
- C. The use of strong encryption for transmissions
- D. The transmission wattage rating used on the NIC

**Answer:** B

**NEW QUESTION 169**

What are three characteristics of Ethernet network topology? (Choose three.)

- A. It uses tokens to avoid collisions on the network.
- B. It can use coaxial, twisted pair, and fiber optic media.
- C. It comprises the largest share of the networks in place today.
- D. It is a non-switching protocol.
- E. It can negotiate different transmission speeds.

**Answer:** ABD

**NEW QUESTION 172**

An Action Center alert recommends that you enable Windows Firewall. After enabling the firewall, you can no longer access websites. Which two TCP ports should you add exceptions for on the firewall? (Choose two.)

- A. Port 21
- B. Port 23
- C. Port 25
- D. Port 80
- E. Port 443

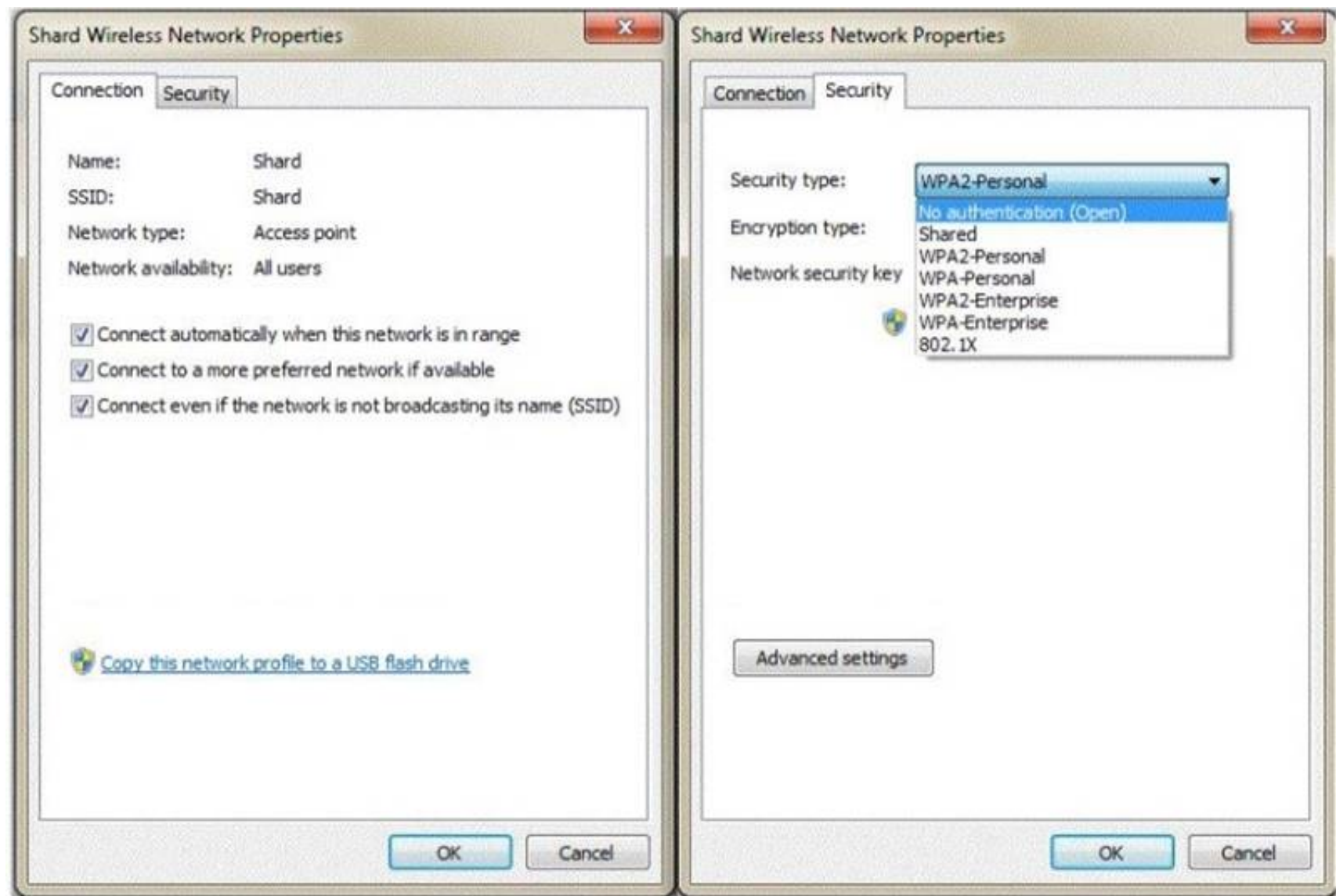
**Answer:** DE

**NEW QUESTION 177**

**HOTSPOT**

You are configuring a wireless network with the Wireless Network Properties that are shown in the following image:





Use the drop-down menus to select the answer choice that completes each statement. Each correct selection is worth one point.

Answer Area

To manually select which network to connect to, you should uncheck **[answer choice]**

▼

Connect automatically when this network is in range.  
Connect to a more preferred network if available.  
Connect even if the network is not broadcasting its name (SSID).

The **[answer choice]** security type requires certificates for its encryption.

▼

WPA-Enterprise  
WPA2-Personal  
802.1X

- A. Mastered
- B. Not Mastered

Answer: A

Explanation:

Answer Area

To manually select which network to connect to, you should uncheck **[answer choice]**

▼

Connect automatically when this network is in range.  
Connect to a more preferred network if available.  
Connect even if the network is not broadcasting its name (SSID).

The **[answer choice]** security type requires certificates for its encryption.

▼

WPA-Enterprise  
WPA2-Personal  
802.1X

NEW QUESTION 178

What is the DNS record type that specifies an alias name of another address record?

- A. MX
- B. CNAME
- C. NS
- D. SOA

Answer: C

#### NEW QUESTION 181

The type of connector used on a 100BaseT Ethernet cable is:

- A. RJ-11
- B. RJ-45.
- C. TNC.
- D. BNC.

**Answer:** B

#### NEW QUESTION 182

Which DNS record type specifies the host that is the authority for a given domain?

- A. NS
- B. MX
- C. CNAME
- D. SOA

**Answer:** B

#### NEW QUESTION 187

One reason to incorporate VLANs in a network is to:

- A. Increase the number of available IP addresses.
- B. Increase the number of available Media Access Control (MAC) addresses.
- C. Reduce the number of broadcast domains.
- D. Reduce the number of nodes in a broadcast domain.

**Answer:** D

#### NEW QUESTION 190

The function of a router is to:

- A. Provide IP subnet masks for hosts.
- B. Forward traffic to other networks.
- C. Broadcast routing tables to clients.
- D. Store tables for name resolution.

**Answer:** B

#### NEW QUESTION 192

What type of record does DNS use to find a mail service?

- A. Service (SRV) DNS record
- B. Canonical (CNAME) DNS record
- C. Mail Exchanger (MX) DNS record
- D. Host (A) DNS record

**Answer:** C

#### NEW QUESTION 197

Which wireless communication problem is caused by electromagnetic waves?

- A. Fading
- B. Attenuation
- C. Interference
- D. Diffraction

**Answer:** C

#### NEW QUESTION 199

HOTSPOT

For each of the following statements, select Yes if the statement is true. Otherwise, select No. Each correct selection is worth one point.

Answer Area

	Yes	No
0:0:0:0:0:0:0:1 is the Loopback address for IPv6.	<input type="radio"/>	<input type="radio"/>
FEC0::9C5A is a valid Site-Local IPv6 address.	<input type="radio"/>	<input type="radio"/>
FE80::F856:02AA is a valid Link-Local (APIPA) IPv6 address.	<input type="radio"/>	<input type="radio"/>

- A. Mastered
- B. Not Mastered

Answer: A

Explanation:

Answer Area

	Yes	No
0:0:0:0:0:0:0:1 is the Loopback address for IPv6.	<input checked="" type="radio"/>	<input type="radio"/>
FEC0::9C5A is a valid Site-Local IPv6 address.	<input checked="" type="radio"/>	<input type="radio"/>
FE80::F856:02AA is a valid Link-Local (APIPA) IPv6 address.	<input checked="" type="radio"/>	<input type="radio"/>

**NEW QUESTION 200**  
If an 802.11g Internet connection has connectivity problems, what may be the cause?

- A. A cordless phone
- B. A cellular phone
- C. Incandescent lights
- D. Electromagnetic interference (EMI)

Answer: D

**NEW QUESTION 203**  
.....

## Relate Links

**100% Pass Your 98-366 Exam with ExamBible Prep Materials**

<https://www.exambible.com/98-366-exam/>

## Contact us

We are proud of our high-quality customer service, which serves you around the clock 24/7.

Viste - <https://www.exambible.com/>