

## Exam Questions JN0-1332

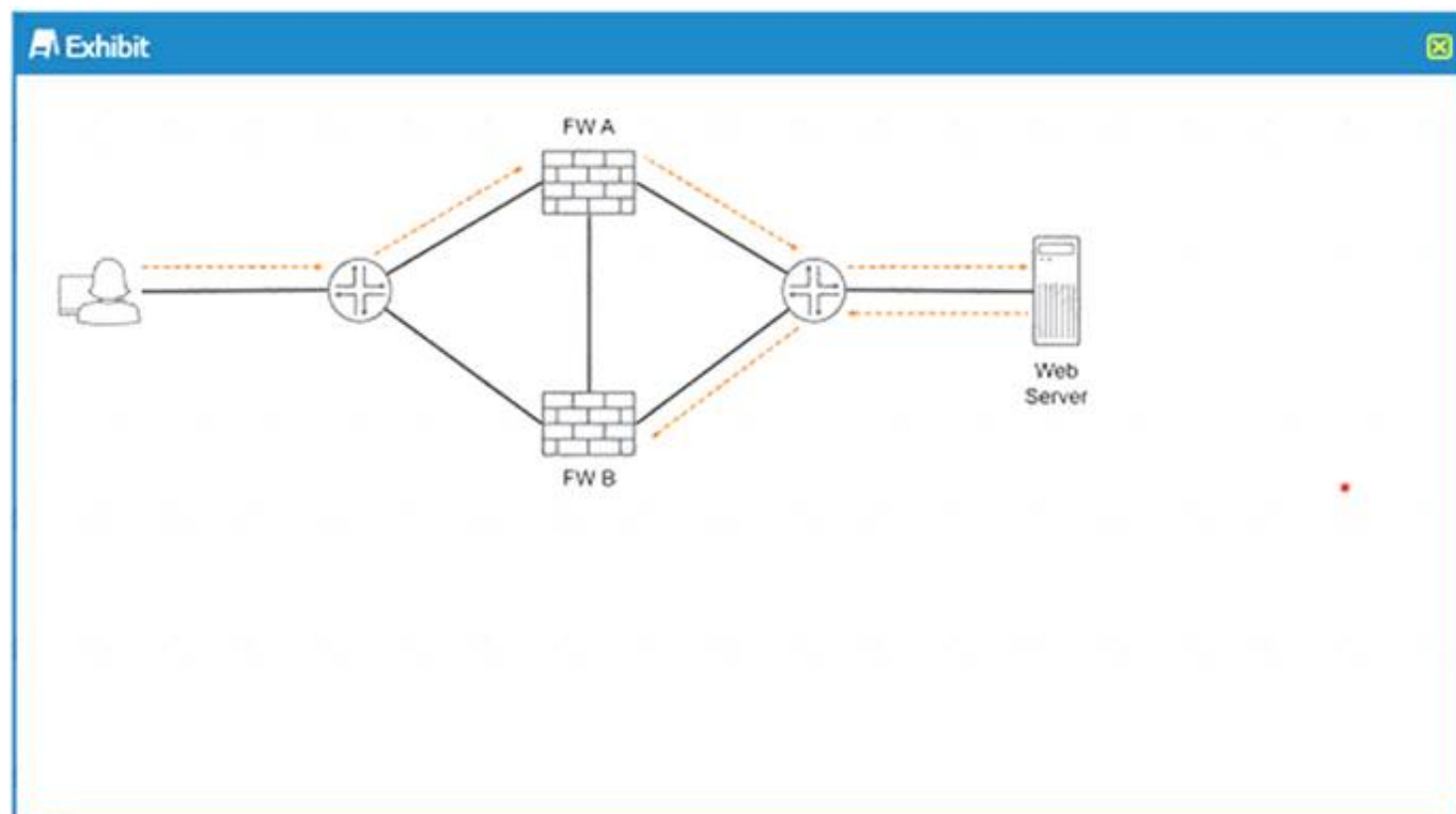
Security Design. Specialist (JNCDS-SEC)

<https://www.2passeasy.com/dumps/JN0-1332/>



### NEW QUESTION 1

Refer the Exhibit.



You must ensure that return Web traffic is not dropped by the firewall devices What must be implemented on the link between FW A and FW B?

- A. VRRP
- B. session sync
- C. asymmetric routing
- D. BFO

**Answer: A**

### NEW QUESTION 2

You are designing a high availability firewall solution You select an off-path design instead of an inline design. What are two reasons for this decision? (Choose two.)

- A. The off-path design is less complex
- B. The off-path design is more flexible
- C. The off-path design uses fewer interfaces at the adjacency layer
- D. The off-path design requires a proper routing configuration for selecting traffic

**Answer: B**

### NEW QUESTION 3

Which feature is evaluated first when a packet is received on an interface of an SRX Series device?

- A. UTM
- B. ALG
- C. stateless firewall filter
- D. screens

**Answer: A**

### NEW QUESTION 4

As part of your design to secure a service provider WAN, you are asked to design a destination-based remote triggered black hole (RTBH) solution What are two reasons for using this design? (Choose two)

- A. The attack is focused on a single IP address
- B. You do not know the source address of DDoS packets
- C. The attack comes from a limited number of source IP addresses
- D. You want to ensure that the destination IP remains reachable

**Answer: D**

### NEW QUESTION 5

As part of a high availability design for interfaces on an SRX chassis cluster, you are asked to deliver a design that provides both link redundancy and node redundancy What would you use to satisfy the requirement?

- A. MC-LAG interfaces
- B. LAG interfaces
- C. reth interfaces
- D. reth LAG interfaces

**Answer: B**

#### NEW QUESTION 6

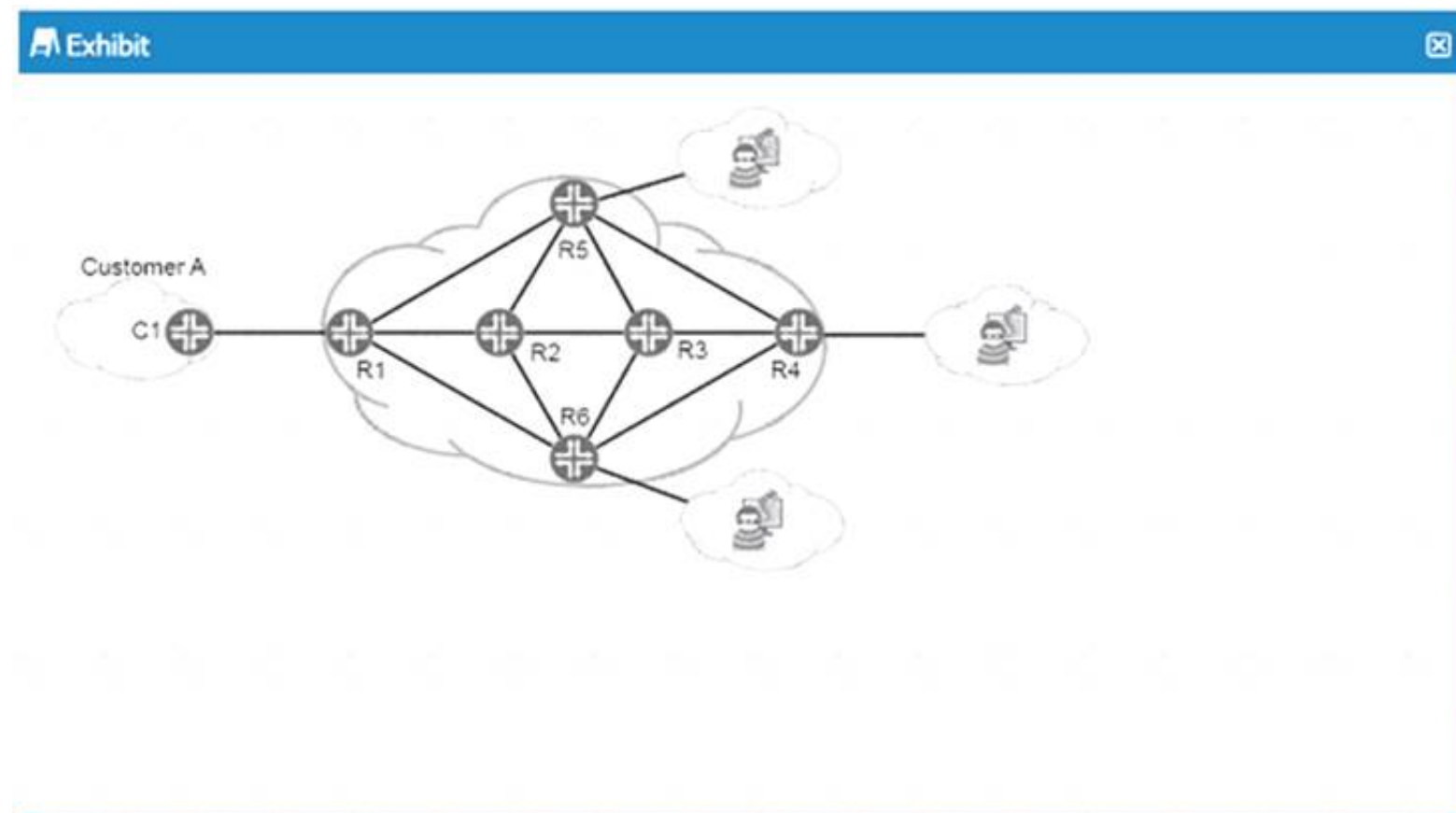
You are asked to perform a risk assessment for a core layer switch in your data center. After analyze the Annual loss Expectancy (ALE) for this switch, you conclude that the risk remediation strategy involves purchasing insurance to protect against losses due to compromise or failure. This scenario describes which risk remediation strategy?

- A. risk transfer
- B. risk mitigation
- C. risk avoidance
- D. risk acceptance

Answer: D

#### NEW QUESTION 7

Refer to the Exhibit.



You are asked to provide a proposal for security elements in the service provider network shown in the exhibit. You must provide DDoS protection for Customer A from potential upstream attackers.

Which statements correct in this scenario?

- A. You should implement DDoS protection to drop offending traffic on the edge devices closest to the destination of the attack.
- B. You should implement DDoS protection to drop offending traffic on the edge devices closest to the source of the attack.
- C. You should implement DDoS protection to drop offending traffic on the core devices.
- D. You should implement DDoS protection to drop offending traffic on the customer edge device.

Answer: C

#### NEW QUESTION 8

As part of your service provider WAN network design, you are asked to create a design that secures BGP communication . In this scenario, what are two reasons you would choose BGP Generated TTL Security Mechanism (GTSM)? (Choose two.)

- A. You have an automated method of rotating MD5 hashes on each router.
- B. All of your router BGP connections are point-to-multipoint.
- C. All of your router BGP connections are point-to-point
- D. You do not have an easy method of rotating MD5 hashes on each router

Answer: BD

#### NEW QUESTION 9

As part of a design requirement you are asked to allow users in a specific department to authenticate only on their laptops and no other devices on the same network port. Which mode of 802.1X authentication will you use to satisfy this requirement?

- A. multiple
- B. single-secure
- C. single
- D. MAC RADIUS

Answer: A

#### NEW QUESTION 10

When considering the data center, which two security aspects must be considered? (Choose two)

- A. theoretical
- B. conceptual

- C. physical
- D. logical

**Answer:** A

#### NEW QUESTION 10

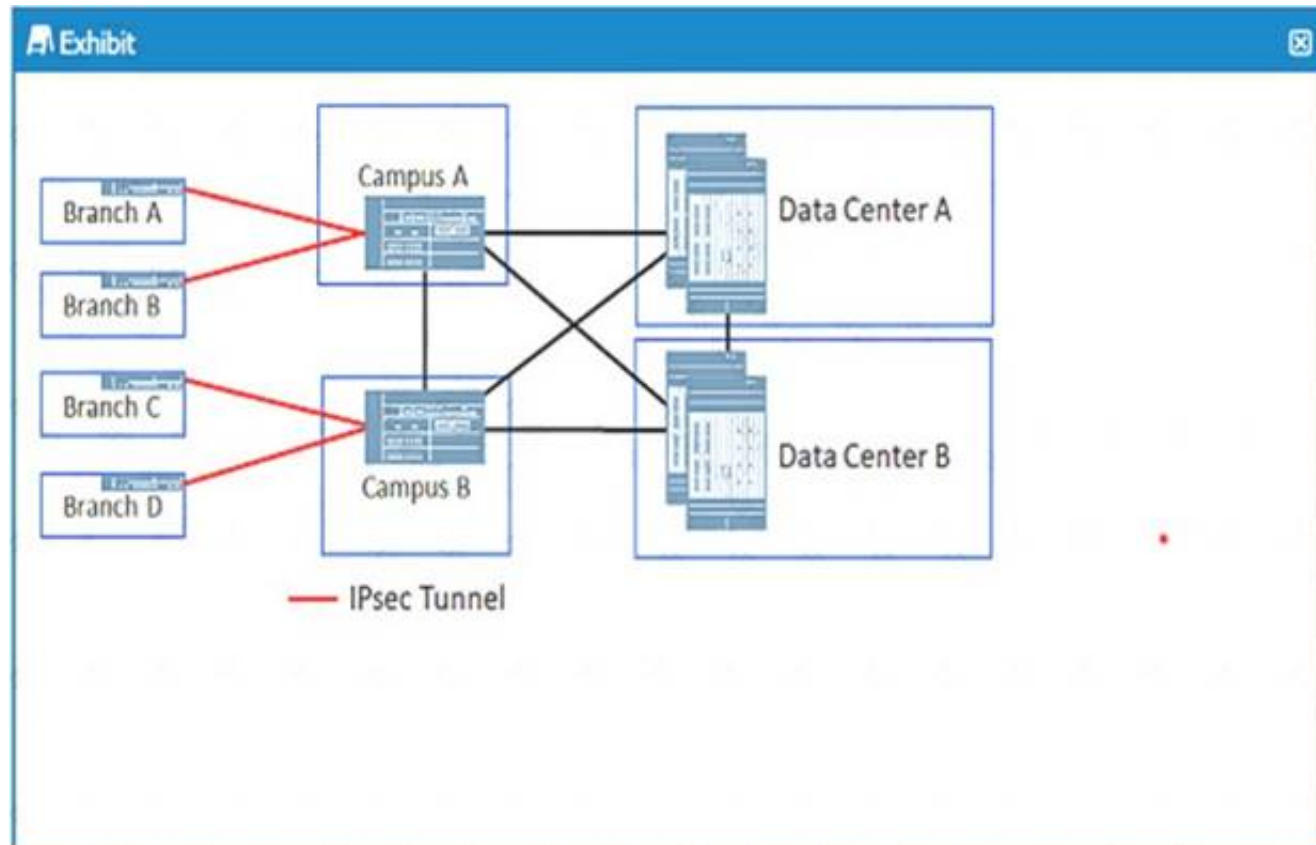
Your company just purchased another company that uses the same IP address space as your company. You are asked to design a solution that allows both company's to use each other's IT resources. Which two actions would you use to accomplish this task? (Choose two.)

- A. Implement double NAT
- B. Implement two non-overlapping equal-size address blocks
- C. Implement three non-overlapping equal-size address blocks.
- D. Implement persisted mat

**Answer:** C

#### NEW QUESTION 14

Exhibit.



In the 3-tier VPN design shown in the exhibit, which function are the Campus A and Campus B SRX Series devices performing?

- A. Internet security gateway
- B. data center firewall
- C. WAN aggregation
- D. VPN bridging

**Answer:** A

#### NEW QUESTION 19

You are designing a security solution that includes SRX Series firewalls in a chassis cluster. In this scenario, which two elements must be part of the design? (Choose two.)

- A. The physical interface on each SRX Series device making up the reth interface must be in the same L2 domain
- B. The physical interface on each SRX Series device making up the reth interface must be in separate L2 domains
- C. The cluster ID must be the same on both SRX Series devices
- D. The node ID must be the same on both SRX Series devices

**Answer:** B

#### NEW QUESTION 20

You want to reduce the possibility of your data center's server becoming an unwilling participant in a DDoS attack. When IPv6 features should you use on your SRX Series devices to satisfy this requirement? (Choose two.)

- A. dynamic IPsec tunnels
- B. Juniper ATP Cloud GeoIP
- C. UTM Web filtering
- D. Juniper ATP Cloud CC feeds

**Answer:** AD

#### NEW QUESTION 24

You are a security architect for a small managed service provider. The marketing team has proposed providing firewall services to the customers. The requirements for the solution are shown below  
 -- The customer must be able to manage their own security device.

-- You must provide segmentation using Layer 2 and Layer 3.  
-- You need to implement dynamic routing  
-- You need to provide UTM services  
in this scenario. which product would you select to provide the firewall services?

- A. cSRX
- B. vSRX
- C. vMX
- D. vQFX

**Answer:** D

#### NEW QUESTION 27

You are asked to provide a security solution to secure corporate traffic across the Internet between sites. This solution must provide data integrity, confidentiality and encryption Which security feature will accomplish this task?

- A. IPsecVPN
- B. IP-IP tunnel
- C. Layer 3 VPN
- D. IGRE tunnel

**Answer:** A

#### NEW QUESTION 31

What are two factors you must consider when designing a network for security intelligence? (Choose two.)

- A. the number and model of JSA Series devices
- B. the third-party management application
- C. the number and model of SRX Series devices
- D. the Junos OS version

**Answer:** B

#### NEW QUESTION 32

Which two statements are true about WAN security considerations? (Choose two.)

- A. MACsec increases protection on alt WAN types
- B. Provider VPN circuit require iPsec
- C. internal connections are susceptible to fragmentation
- D. IPsec increases protection on all WAN types

**Answer:** C

#### NEW QUESTION 36

When two security services process a packet whether it is being processed in the first-packet path or the fast path? (Choose two.)

- A. screen options
- B. ALG
- C. route lookup
- D. policy lookup

**Answer:** CD

#### NEW QUESTION 41

Your network design requires that you ensure privacy between WAN endpoints. Which transport technology requires an IPsec overlay to satisfy this requirement?

- A. L3VPN
- B. leased line
- C. internet
- D. L2VPN

**Answer:** A

#### NEW QUESTION 46

You are designing a service provider network. As part of your design you must ensure that the OSPF, BGP, and RSVP protocol communications are secured using the same authentication method. Which authentication protocol will accomplish this task?

- A. HMAC-MD5
- B. simple authentication
- C. SHA-RSA
- D. SHA-256

**Answer:** B

#### NEW QUESTION 47

Which firewall service is used as a first line of defense and often used by a security device to protect itself?

- A. intrusion prevention system
- B. unified Threat management
- C. network address translation
- D. stateless firewall filter

**Answer:** A

#### NEW QUESTION 52

You are asked to design security into the configuration of routing protocols on your Junos network to stop rogue neighbors from forming adjacencies for an enterprise WAN. What will accomplish this task?

- A. PAP
- B. SAML
- C. MOS
- D. TTLS

**Answer:** D

#### NEW QUESTION 56

You are designing a security solution for an existing data center. All traffic must be secured using SRX Series devices, however, you are unable to change the existing IP addressing scheme. Which firewall deployment method satisfies this requirement?

- A. transparent deployment
- B. two-arm deployment
- C. one-arm deployment
- D. inline deployment

**Answer:** A

#### NEW QUESTION 59

A customer wants to understand why Policy Enforcer is included as a part of your network design proposal. In this situation, which statement is correct?

- A. Policy Enforcer submits files to Juniper ATP Cloud for malware scanning
- B. Policy Enforcer can provide client security based on software installed on the client machine
- C. Policy Enforcer provides Zero trust security to all devices connecting to the network
- D. Policy Enforcer can collect events and news from a wide range of network devices

**Answer:** A

#### NEW QUESTION 60

A new virus is spreading across the Internet, with the potential to affect your customer's network.

Which two statements describe how Policy Enforcer interacts with other devices to ensure that the network is protected in this scenario? (Choose two.)

- A. Policy Enforcer pulls security intelligence feeds from Juniper ATP Cloud to apply to SRX Series devices
- B. Policy Enforcer pulls security policies from Juniper ATP cloud and applies them to SRX Series devices
- C. Policy Enforcer automates the enrollment of SRX Series devices with Juniper ATP Cloud
- D. Security Director pulls security intelligence feeds from Juniper ATP Cloud and applies them to Policy Enforcer

**Answer:** B

#### NEW QUESTION 62

You are asked to design an automated vulnerability scanner that can actively check to see which ports are open and report on the findings. Which Juniper Networks product would you use in this scenario?

- A. Security Director
- B. Log Director
- C. Policy Enforcer
- D. JSA

**Answer:** C

#### NEW QUESTION 67

Which two steps should be included in your security design process? (Choose two.)

- A. Define an overall routing strategy
- B. Identify external attackers
- C. Identify permitted communications
- D. Identify security requirements for the customer's organization

**Answer:** BC

#### NEW QUESTION 69



.....

## THANKS FOR TRYING THE DEMO OF OUR PRODUCT

Visit Our Site to Purchase the Full Set of Actual JN0-1332 Exam Questions With Answers.

We Also Provide Practice Exam Software That Simulates Real Exam Environment And Has Many Self-Assessment Features. Order the JN0-1332 Product From:

<https://www.2passeasy.com/dumps/JN0-1332/>

## Money Back Guarantee

### JN0-1332 Practice Exam Features:

- \* JN0-1332 Questions and Answers Updated Frequently
- \* JN0-1332 Practice Questions Verified by Expert Senior Certified Staff
- \* JN0-1332 Most Realistic Questions that Guarantee you a Pass on Your FirstTry
- \* JN0-1332 Practice Test Questions in Multiple Choice Formats and Updatesfor 1 Year