

# Microsoft

## Exam Questions MS-100

Microsoft 365 Identity and Services



**NEW QUESTION 1**

- (Exam Topic 1)  
Your company recently purchased a Microsoft 365 subscription.  
You enable Microsoft Azure Multi-Factor Authentication (MFA) for all 500 users in the Azure Active Directory (Azure AD) tenant.  
You need to generate a report that lists all the users who completed the Azure MFA registration process. What is the best approach to achieve the goal? More than one answer choice may achieve the goal. Select the BEST answer.

- A. From Azure Cloud Shell, run the Get-AzureADUser cmdlet.
- B. From Azure Cloud Shell, run the Get-MsolUser cmdlet
- C. From the Azure Active Directory admin center, use the MFA Server blade.
- D. From the Azure Active Directory admin center, use the Risky sign-ins blade.

**Answer:** B

**Explanation:**  
References:  
<https://docs.microsoft.com/en-us/azure/active-directory/authentication/howto-mfa-reporting>

**NEW QUESTION 2**

- (Exam Topic 1)  
You have a Microsoft Azure Active Directory (Azure AD) tenant named contoso.com. You add an app named App1 to the enterprise applications in contoso.com. You need to configure self-service for App1. What should you do first?

- A. Assign App1 to users and groups.
- B. Add an owner to App1.
- C. Configure the provisioning mode for App1.
- D. Configure an SSO method for App1.

**Answer:** A

**Explanation:**  
References:  
<https://docs.microsoft.com/en-us/azure/active-directory/manage-apps/manage-self-service-access>

**NEW QUESTION 3**

- (Exam Topic 1)  
Your company has offices in several cities and 100.000 users. The network contains an Active Directory domain contoso.com.  
You purchase Microsoft 365 and plan to deploy several Microsoft 365 services.  
You are evaluating the implementation of pass-through authentication and seamless SSO. Azure AD Connect will NOT be in staging mode.  
You need to identify the redundancy limits for the planned implementation.  
What should you identify? To answer, select the appropriate options in the answer area. NOTE: Each correct selection is worth one point.

Maximum number of servers on which you can run Azure AD Connect:	<div><div></div><div>1</div><div>2</div><div>4</div><div>6</div><div>11</div></div>
Maximum number of servers on which you can run standalone Authentication Agents:	<div><div></div><div>1</div><div>2</div><div>4</div><div>6</div><div>11</div></div>

- A. Mastered
- B. Not Mastered

**Answer:** A

**Explanation:**

Maximum number of servers on which you can run Azure AD Connect:

1

2

4

6

11

Maximum number of servers on which you can run standalone Authentication Agents:

1

2

4

6

11

NEW QUESTION 4

- (Exam Topic 1)

Note: This question is part of a series of questions that present the same scenario. Each question in the series contains a unique solution that might meet the stated goals. Some question sets might have more than one correct solution, while others might not have a correct solution. After you answer a question in this section, you will NOT be able to return to it. As a result these questions will not appear in the review screen. Your company has a main office and three branch offices. All the branch offices connect to the main office by using a WAN link. The main office has a high-speed Internet connection. All the branch offices connect to the Internet by using the main office connection. Users use Microsoft Outlook 2016 to connect to 4 Microsoft Exchange Server mailbox hosted in the main office. The users report that when the WAN link in their office becomes unavailable, they cannot access their mailbox. You create a Microsoft 365 subscription, and then migrate all the user data to Microsoft 365. You need to ensure that all the users can continue to use Outlook to receive email messages if a WAN link fails. Solution: For each branch office, you add a direct connection to the Internet. Does this meet the goal?

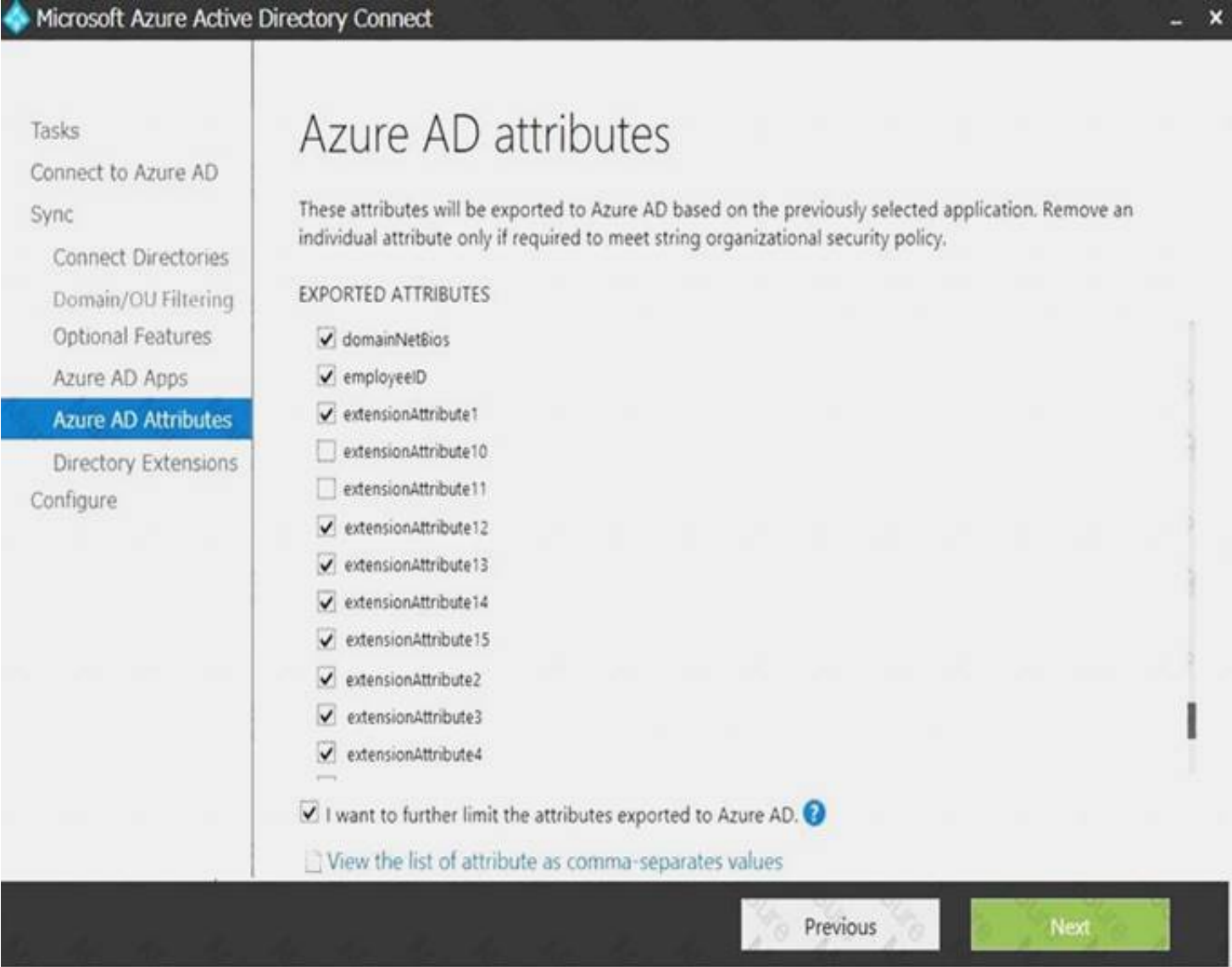
- A. Yes
- B. NO

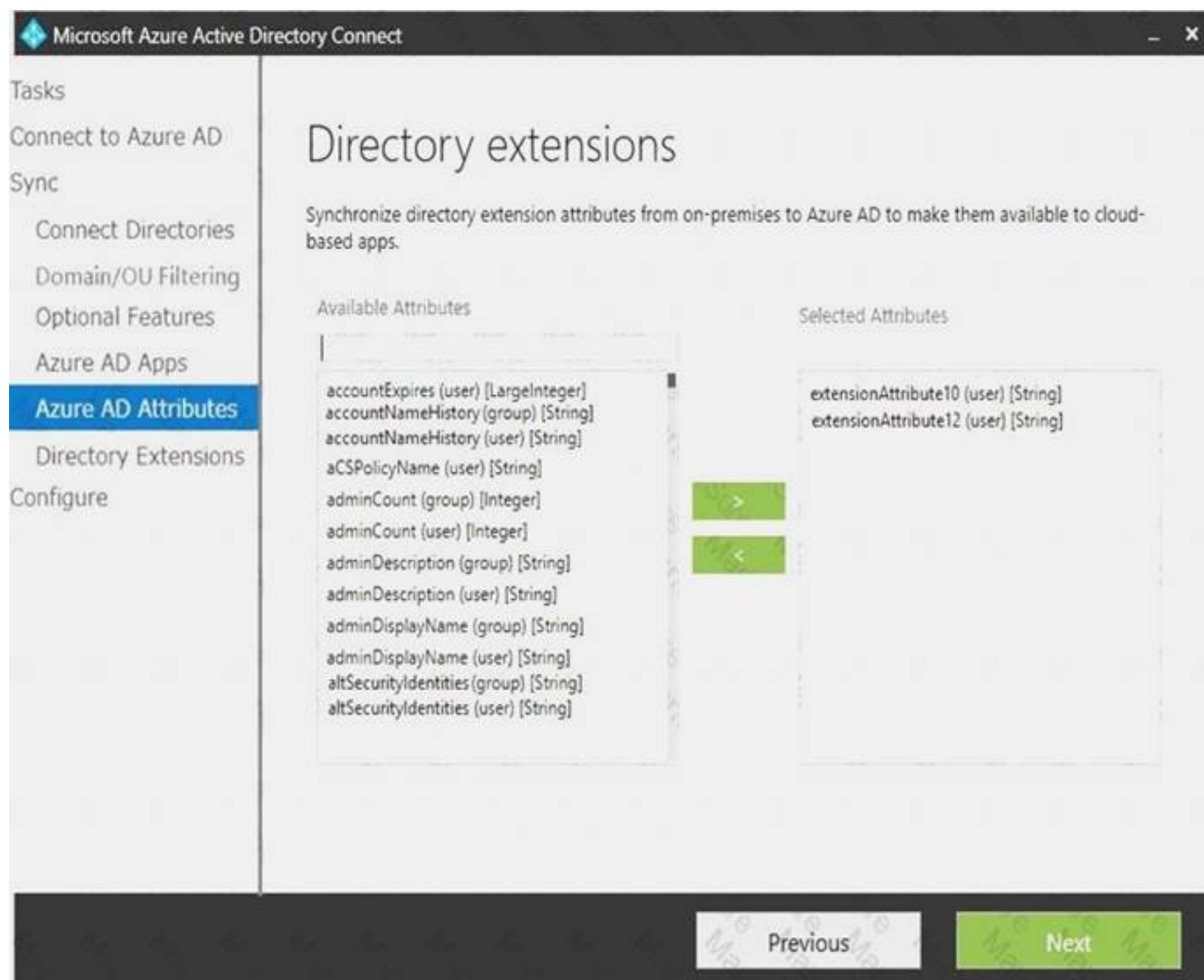
Answer: A

NEW QUESTION 5

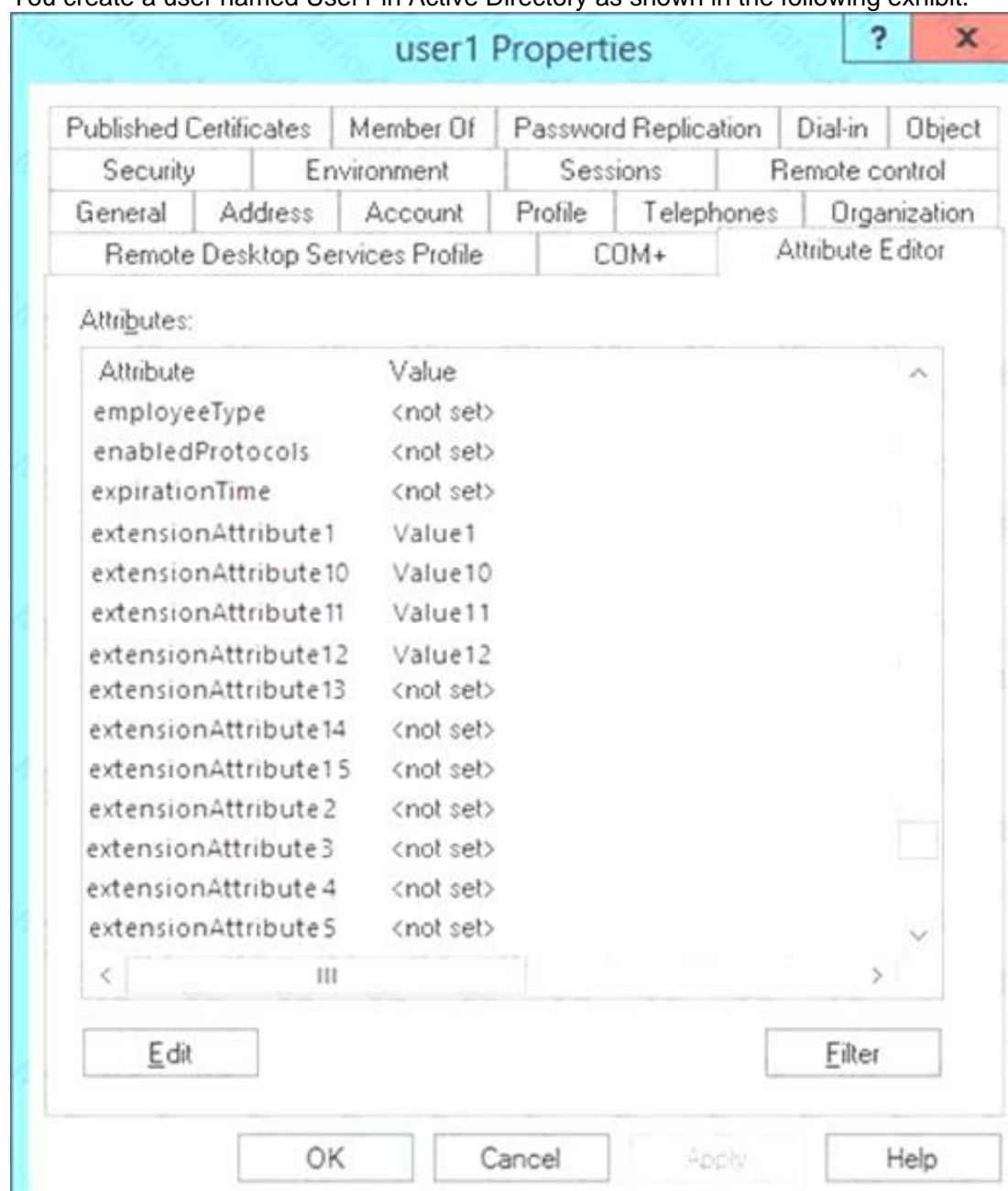
- (Exam Topic 1)

Your network contains an on-premises Active Directory domain that is synced to Microsoft Azure Active Directory (Azure AD) as shown in the following two exhibits.





You create a user named User1 in Active Directory as shown in the following exhibit.



For each of the following statements, select Yes if the statement is true. Otherwise, select No. NOTE: Each correct selection is worth one point.



Statements	Yes	No
The value of extensionAttribute1 is synchronized to Azure AD.	<input type="radio"/>	<input type="radio"/>
The value of extensionAttribute10 is synchronized to Azure AD.	<input type="radio"/>	<input type="radio"/>
The value of extensionAttribute11 is synchronized to Azure AD.	<input type="radio"/>	<input type="radio"/>
The value of extensionAttribute12 is synchronized to Azure AD.	<input type="radio"/>	<input type="radio"/>

- A. Mastered
- B. Not Mastered

Answer: A

Explanation:

Statements	Yes	No
The value of extensionAttribute1 is synchronized to Azure AD.	<input checked="" type="radio"/>	<input type="radio"/>
The value of extensionAttribute10 is synchronized to Azure AD.	<input checked="" type="radio"/>	<input type="radio"/>
The value of extensionAttribute11 is synchronized to Azure AD.	<input type="radio"/>	<input checked="" type="radio"/>
The value of extensionAttribute12 is synchronized to Azure AD.	<input checked="" type="radio"/>	<input type="radio"/>

NEW QUESTION 6

- (Exam Topic 1)  
Your company has a Microsoft 365 subscription.  
You plan to move several archived PST files to Microsoft Exchange Online mailboxes. You need to create an import job for the PST files.  
Which three actions should you perform before you create the import job? Each correct answer presents part of the solution.  
NOTE: Each correct selection is worth one point.

- A. Create a Microsoft Azure Storage account.
- B. From Security & Compliance, retrieve the SAS key.
- C. Run azcopy.exe to copy the PST files to Microsoft Azure Storage
- D. Use Microsoft Azure Storage Explorer to copy the PST files to Azure Storage.
- E. Create a PST import mapping file.

Answer: BCE

Explanation:

References:  
<https://docs.microsoft.com/en-us/office365/securitycompliance/use-network-upload-to-import-pst-files>

NEW QUESTION 7

- (Exam Topic 1)  
Your company has a Microsoft Azure Active Directory (Azure AD) directory tenant named contoso.onmicrosoft.com.  
All users have client computers that run Windows 10 Pro and are joined to Azure AD. The company purchases a Microsoft 365 E3 subscription.  
You need to upgrade all the computers to Windows 10 Enterprise. The solution must minimize administrative effort.  
You assign licenses from the Microsoft 365 admin center. What should you do next?

- A. Add a custom domain name to the subscription.
- B. Deploy Windows 10 Enterprise by using Windows Autopilot.
- C. Create provisioning package, and then deploy the package to all the computers.
- D. Instruct all the users to log off of their computer, and then to log in again.

Answer: B

NEW QUESTION 8

- (Exam Topic 1)  
Your company has a Microsoft Azure Active Directory (Azure AD) tenant named contoso.onmicrosoft.com that contains a user named User1.  
You suspect that an imposter is signing in to Azure AD by using the credentials of User1.  
You need to ensure that an administrator named Admin1 can view all the sign in details of User 1 from the past 24 hours.  
To which three roles should you add Admin1? Each correct answer presents a complete solution. NOTE: Each correct selection is worth one point.

- A. Security administrator
- B. Password administrator
- C. User administrator
- D. Compliance administrator

Answer: ABC

NEW QUESTION 9

- (Exam Topic 1)

Your company has a Microsoft 365 subscription that contains the users shown in the following table.

Name	Role
User1	Global administrator
User2	Security administrator, Guest inviter
User3	None
User4	Password administrator

You need to identify which users can perform the following administrative tasks:

- ▶ Modify the password protection policy.
- ▶ Create guest user accounts.

Which users should you identify for each task? To answer, select the appropriate options in the answer area. NOTE: Each correct selection is worth one point.

Modify the password protection policy:

User1 only

User1 and User2 only

User1, User2, and User4 only

User1, User2, User3, and User4

Create new guest users in Microsoft Azure Active Directory (Azure AD):

User1 only

User1 and User2 only

User1, User2, and User4 only

User1, User2, User3, and User4

- A. Mastered  
B. Not Mastered

Answer: A

Explanation:

Modify the password protection policy:

User1 only

User1 and User2 only

User1, User2, and User4 only

User1, User2, User3, and User4

Create new guest users in Microsoft Azure Active Directory (Azure AD):

User1 only

User1 and User2 only

User1, User2, and User4 only

User1, User2, User3, and User4

NEW QUESTION 10

- (Exam Topic 1)

You have a Microsoft Azure Active Directory (Azure AD) tenant named contoso.com that includes a user named User1.

You enable multi-factor authentication for contoso.com and configure the following two fraud alert settings: ▶ Set Allow users to submit fraud alerts: On

- ▶ Automatically block users who report fraud: On

You need to instruct the users in your organization to use the fraud reporting features correctly. What should you tell the users to do? To answer, select the appropriate options in the answer area. NOTE: Each correct selection is worth one point.

A user can report fraud on her account by:

Typing a special code after receiving an alert call

Sending an email message to an administrator

Using the Microsoft Authenticator app

If User1 reports fraud on his account, the account will be blocked automatically for:

6 hours

1 day

7 days

90 days

- A. Mastered  
B. Not Mastered

**Answer:** A

**Explanation:**

References:

<https://docs.microsoft.com/en-us/azure/active-directory/authentication/howto-mfa-mfasettings#fraud-alert>

**NEW QUESTION 10**

- (Exam Topic 1)

You have a Microsoft 365 subscription.

Your company deploys an Active Directory Federation Services (AD FS) solution. You need to configure the environment to audit AD FS user authentication.

Which two actions should you perform? Each correct answer presents part of the solution. NOTE: Each correct selection is worth one point.

- A. From all the AD FS servers, run audltpol.exe.
- B. From all the domain controllers, run the set-AdminAuditLogConfig cmdlet and specify the –LogiLevel parameter.
- C. On a domain controller install Azure AD Connect Health for AD DS.
- D. From the Azure AD Connect server, run the Register-AzureADConnectHealthSyncAgent cmdlet.
- E. On an server, install Azure AD Connect Health (or AD FS).

**Answer:** DE

**NEW QUESTION 11**

- (Exam Topic 1)

You have an on-premises Microsoft SharePoint Server 2016 environment. You create a Microsoft 365 tenant.

You need to migrate some of the SharePoint sites to SharePoint Online. The solution must meet the following requirements:

- ☒ Microsoft OneDrive sites must redirect users to online content.
- ☒ Users must be able to follow both on-premises and cloud-based sites.
- ☒ Users must have a single SharePoint profile for both on-premises and on the cloud.

When users search for a document by using keywords, the results must include online and on-premises results. From the SharePoint Hybrid Configuration Wizard, you select the following features:

- ☒ Hybrid business to business (B2B) sites
- ☒ Hybrid OneDrive
- ☒ Hybrid Search

Which two requirements are met by using the SharePoint Hybrid Configuration Wizard features? Each correct answer presents a complete solution.

NOTE: Each correct selection is worth one point.

- A. Users must have a single SharePoint profile for both on-premises and on the cloud.
- B. OneDrive sites must redirect users to online content.
- C. Users must be able to follow both on-premises and cloud-based sites.
- D. When users search for a document by using keywords, the results must include online and on-premises results.

**Answer:** BD

**NEW QUESTION 14**

- (Exam Topic 1)

You purchase Microsoft 365, and then implement directory synchronization. You plan to publish the web applications.

You need to ensure that all the applications are accessible by using the My Apps portal. The solution must minimize administrative effort.

What should you do first?

- A. Deploy one conditional access policy.
- B. Deploy one connector.
- C. Create four application registrations.
- D. Create a site-to-site VPN from Microsoft Azure to the on-premises network.

**Answer:** B

**NEW QUESTION 17**

- (Exam Topic 1)

Your company has a Microsoft 365 subscription and a Microsoft Azure Active Directory (Azure AD) tenant named contoso.onmicrosoft.com.

An external vendor has a Microsoft account that has a username of user1@outlook.com. You plan to provide user1@outlook.com with access to several resources in the subscription.

You need to add the external user account to contoso.onmicrosoft.com. The solution must ensure that the external vendor can authenticate by using user1@outlook.com.

What should you do?

- A. From Azure Cloud Shell, run the New-AzureADUser cmdlet and specify –UserPrincipalName user1@outlook.com.
- B. From the Microsoft 365 admin center, add a contact, and then specify user1@outlook.com as the email address.
- C. From the Azure portal, add a new guest user, and then specify user1@outlook.com as the email address.
- D. From the Azure portal, add a custom domain name, and then create a new Azure AD user and use user1@outlook.com as the username.

**Answer:** C

**NEW QUESTION 21**

- (Exam Topic 1)

Your company has a Microsoft 365 subscription.

You upload several archive PST files to Microsoft 365 by using the Security & Compliance admin center. A month later, you attempt to run an import job for the PST files.



You discover that the PST files were deleted from Microsoft 365.

What is the most likely cause of the files being deleted? More than one answer choice may achieve the goal. Select the BEST answer.

- A. The PST files were corrupted and deleted by Microsoft 365 security features.
- B. PST files are deleted automatically from Microsoft 365 after 30 days.
- C. The size of the PST files exceeded a storage quota and caused the files to be deleted.
- D. Another administrator deleted the PST files.

**Answer:** B

**Explanation:**

References:

<https://docs.microsoft.com/en-us/office365/securitycompliance/faqimporting-pst-files-to-office-365>

**NEW QUESTION 24**

- (Exam Topic 1)

Your network contains an Active Directory forest named adatum.local. The forest contains 500 users and uses adatum.com as a UPN suffix.

You deploy a Microsoft 365 tenant.

You implement directory synchronization and sync only 50 support users.

You discover that five of the synchronized users have usernames that use a UPN suffix of onmicrosoft.com. You need to ensure that all synchronized identities retain the UPN set in their on-premises user account. What should you do?

- A. From the Microsoft 365 admin center, add adatum.com as a custom domain name.
- B. From Windows PowerShell, run the Set-ADDomain –AllowedDNSSuffixes adatum.com command.
- C. From Active Directory Users and Computers, modify the UPN suffix of the five user accounts.
- D. From the Microsoft 365 admin center, add adatum.local as a custom domain name.

**Answer:** C

**NEW QUESTION 25**

- (Exam Topic 1)

Your company has a Microsoft 365 subscription.

Your plan to add 100 newly hired temporary users to the subscription next week. You create the user accounts for the new users.

You need to assign licenses to the new users. Which command should you run?

- A. 

```
$NewStaff = Get-AzureADUser -All -Department "Temp" -UsageLocation "";  
$NewStaff | foreach {Set-AzureADUser -LicenseOptions "contoso:ENTERPRISEPACK"}
```
- B. 

```
$NewStaff = Get-AzureADUser -All -Department "Temp" -UsageLocation "US" -UnlicensedUsersOnly;  
$NewStaff | foreach {Set-AzureADUserLicense -AddLicenses "contoso:ENTERPRISEPACK"}
```
- C. 

```
$NewStaff = Get-AzureADUser -All -Department "Temp" -UsageLocation "";  
$NewStaff | foreach {Set-AzureADUserLicense -LicenseOptions "contoso:ENTERPRISEPACK"}
```
- D. 

```
$NewStaff = Get-AzureADUser -All -Department "Temp" -UsageLocation "US" -UnlicensedUsersOnly;  
$NewStaff | foreach {Set-AzureADUser -AddLicenses "contoso:ENTERPRISEPACK"}
```

- A. Option A
- B. Option B
- C. Option C
- D. Option D

**Answer:** B

**NEW QUESTION 30**

- (Exam Topic 2)

You need to meet the technical requirements for the user licenses.

Which two properties should you configure for each user? To answer, select the appropriate properties in the answer area.

NOTE: Each correct selection is worth one point.



Identity

Name

User1

User name

User1@Contoso1410.onmicrosoft.com

Object ID

22c31139-c143-4076-a71c-b5d0d5...

First Name

Last Name

User type

Member

Source

Azure Active Directory

Job info

Job title

Department

Manager

Remove

Change

Settings

Block sign in

Yes

No

Usage location

Contact info

Street address

State or province

Country or region

City

ZIP or postal code

Office phone

Authentication contact info

Phone

Email

Alternate phone

Alternate email

- A. Mastered
- B. Not Mastered

Answer: A

Explanation:

### Identity

Name

User name

Object ID

First Name

Last Name

User type  
Member

Source  
Azure Active Directory

### Job info

Job title

Department

Manager

Remove Change

### Settings

Block sign in  
Yes No

Usage location

### Contact info

Street address

State or province

Country or region

City

ZIP or postal code

Office phone

### Authentication contact info

Phone

Email

Alternate phone

Alternate email

#### NEW QUESTION 31

- (Exam Topic 2)

You need to meet the security requirement for the vendors. What should you do?

- A. From the Azure portal, add an identity provider.
- B. From Azure Cloud Shell, run the New-AzureADUser cmdlet and specify the –UserPrincipalName parameter.
- C. From the Azure portal, create guest accounts.
- D. From Azure Cloud Shell, run the New-AzureADUser cmdlet and specify the –UserType parameter.

**Answer: C**

#### NEW QUESTION 35

- (Exam Topic 2)

You need to meet the security requirement for Group1. What should you do?

- A. Configure all users to sign in by using multi-factor authentication.
- B. Modify the properties of Group1.
- C. Assign Group1 a management role.
- D. Modify the Password reset properties of the Azure AD tenant.

**Answer: D**

#### Explanation:

References:

<https://docs.microsoft.com/en-us/azure/active-directory/authentication/concept-sspr-howitworks>

#### NEW QUESTION 37

- (Exam Topic 3)

You need to ensure that all the sales department users can authenticate successfully during Project1and Project2. Which authentication strategy should you implement for the pilot projects?

- A. password hash synchronization and seamless SSO
- B. pass-through authentication
- C. password hash synchronization

D. pass-through authentication and seamless SSO

**Answer:** A

**Explanation:**

References:

<https://docs.microsoft.com/en-us/azure/security/azure-ad-choose-authn>

**NEW QUESTION 39**

.....

## Thank You for Trying Our Product

### We offer two products:

1st - We have Practice Tests Software with Actual Exam Questions

2nd - Questions and Answers in PDF Format

### MS-100 Practice Exam Features:

- \* MS-100 Questions and Answers Updated Frequently
- \* MS-100 Practice Questions Verified by Expert Senior Certified Staff
- \* MS-100 Most Realistic Questions that Guarantee you a Pass on Your First Try
- \* MS-100 Practice Test Questions in Multiple Choice Formats and Updates for 1 Year

**100% Actual & Verified — Instant Download, Please Click**  
**[Order The MS-100 Practice Test Here](#)**