

Exam Questions MS-100

Microsoft 365 Identity and Services

<https://www.2passeasy.com/dumps/MS-100/>



NEW QUESTION 1

- (Exam Topic 1)

Your network contains a single Active Directory domain and two Microsoft Azure Active Directory (Azure AD) tenants.

You plan to implement directory synchronization for both Azure AD tenants. Each tenant will contain some of the Active Directory users.

You need to recommend a solution for the planned directory synchronization. What should you include in the recommendation?

- A. Deploy two servers that run Azure AD Connect, and then filter the users for each tenant by using organizational unit (OU)-based filtering.
- B. Deploy one server that runs Azure AD Connect, and then specify two sync groups.
- C. Deploy one server that runs Azure AD Connect, and then filter the users for each tenant by using organizational unit (OU)-based filtering.
- D. Deploy one server that runs Azure AD Connect, and then filter the users for each tenant by using domainbased filtering.

Answer: A

Explanation:

References:

<https://docs.microsoft.com/en-us/azure/active-directory/hybrid/plan-connect-topologies#multiple-azure-adtenant>

NEW QUESTION 2

- (Exam Topic 1)

Your company recently purchased a Microsoft 365 subscription.

You enable Microsoft Azure Multi-Factor Authentication (MFA) for all 500 users in the Azure Active Directory (Azure AD) tenant.

You need to generate a report that lists all the users who completed the Azure MFA registration process. What is the best approach to achieve the goal? More than one answer choice may achieve the goal. Select the BEST answer.

- A. From Azure Cloud Shell, run the Get-AzureADUser cmdlet.
- B. From Azure Cloud Shell, run the Get-MsolUser cmdlet
- C. From the Azure Active Directory admin center, use the MFA Server blade.
- D. From the Azure Active Directory admin center, use the Risky sign-ins blade.

Answer: B

Explanation:

References:

<https://docs.microsoft.com/en-us/azure/active-directory/authentication/howto-mfa-reporting>

NEW QUESTION 3

- (Exam Topic 1)

Note: This question is part of a series of questions that present the same scenario. Each question in the series contains a unique solution that might meet the stated goals. Some question sets might have more than one correct solution, while others might not have a correct solution.

After you answer a question in this section, you will NOT be able to return to it. As a result these questions will not appear in the review screen.

Your company has a main office and three branch offices. All the branch offices connect to the main office by using a WAN link. The main office has a high-speed Internet connection. All the branch offices connect to the Internet by using the main office connection.

Users use Microsoft Outlook 2016 to connect to 4 Microsoft Exchange Server mailbox hosted in the main office.

The users report that when the WAN link in their office becomes unavailable, they cannot access their mailbox.

You create a Microsoft 365 subscription, and then migrate all the user data to Microsoft 365.

You need to ensure that all the users can continue to use Outlook to receive email messages if a WAN link fails.

Solution: You deploy a site-to-site VPN from each branch office to Microsoft Azure. Does this meet the goal?

- A. Yes
- B. NO

Answer: B

NEW QUESTION 4

- (Exam Topic 1)

Your company has a Microsoft Azure Active Directory (Azure AD) tenant named contoso.com that includes the users shown in the following table.

Name	Usage location	Membership
User1	<i>Not applicable</i>	Group1
User2	United States	Group2
User3	United States	<i>Not applicable</i>

Group2 is a member of Group1.

You assign a Microsoft Office 365 Enterprise E3 license to User2 as shown in the following exhibit.

License options

Office 365 Enterprise E3

Azure Rights Management	<input type="checkbox"/> Off	<input type="checkbox"/> On
Exchange Online (Plan 2)	<input type="checkbox"/> Off	<input type="checkbox"/> On
Flow for Office 365	<input type="checkbox"/> Off	<input type="checkbox"/> On
Microsoft Forms (Plan E3)	<input type="checkbox"/> Off	<input type="checkbox"/> On
Microsoft Planner	<input type="checkbox"/> Off	<input type="checkbox"/> On
Microsoft StaffHub	<input type="checkbox"/> Off	<input type="checkbox"/> On
Microsoft Teams	<input type="checkbox"/> Off	<input type="checkbox"/> On
Office 365 ProPlus	<input type="checkbox"/> Off	<input type="checkbox"/> On
Office Online	<input type="checkbox"/> Off	<input type="checkbox"/> On
PowerApps for Office 365	<input type="checkbox"/> Off	<input type="checkbox"/> On
SharePoint Online (Plan 2)	<input type="checkbox"/> Off	<input checked="" type="checkbox"/> On
Skype for Business Online (Plan 2)	<input type="checkbox"/> Off	<input type="checkbox"/> On
Stream for Office 365	<input type="checkbox"/> Off	<input type="checkbox"/> On
Sway	<input type="checkbox"/> Off	<input type="checkbox"/> On
To-Do (Plan 2)	<input type="checkbox"/> Off	<input type="checkbox"/> On
Yammer Enterprise	<input type="checkbox"/> Off	<input type="checkbox"/> On

You assign Office 365 Enterprise E3 licenses to Group1 as shown in the following exhibit.

License options

Office 365 Enterprise E3

Azure Rights Management	<input checked="" type="checkbox"/> Off	<input type="checkbox"/> On
Exchange Online (Plan 2)	<input type="checkbox"/> Off	<input checked="" type="checkbox"/> On
Flow for Office 365	<input checked="" type="checkbox"/> Off	<input type="checkbox"/> On
Microsoft Forms (Plan E3)	<input checked="" type="checkbox"/> Off	<input type="checkbox"/> On
Microsoft Planner	<input checked="" type="checkbox"/> Off	<input type="checkbox"/> On
Microsoft StaffHub	<input checked="" type="checkbox"/> Off	<input type="checkbox"/> On
Microsoft Teams	<input checked="" type="checkbox"/> Off	<input type="checkbox"/> On
Office 365 ProPlus	<input checked="" type="checkbox"/> Off	<input type="checkbox"/> On
Office Online	<input checked="" type="checkbox"/> Off	<input type="checkbox"/> On
PowerApps for Office 365	<input checked="" type="checkbox"/> Off	<input type="checkbox"/> On
SharePoint Online (Plan 2)	<input checked="" type="checkbox"/> Off	<input type="checkbox"/> On
Skype for Business Online (Plan 2)	<input checked="" type="checkbox"/> Off	<input type="checkbox"/> On
Stream for Office 365	<input checked="" type="checkbox"/> Off	<input type="checkbox"/> On
Sway	<input checked="" type="checkbox"/> Off	<input type="checkbox"/> On
To-Do (Plan 2)	<input checked="" type="checkbox"/> Off	<input type="checkbox"/> On
Yammer Enterprise	<input checked="" type="checkbox"/> Off	<input type="checkbox"/> On

For each of the following statements, select Yes if the statement is true. Otherwise, select No. NOTE: Each correct selection is worth one point.

Statements	Yes	No
User1 is licensed to use Microsoft Exchange Online.	<input type="radio"/>	<input type="radio"/>
User1 is licensed to use Microsoft Exchange Online and Microsoft Share Point Online.	<input type="radio"/>	<input type="radio"/>
If you add User3 to Group2, the user will be licensed to use Microsoft Exchange Online.	<input type="radio"/>	<input type="radio"/>

- A. Mastered
- B. Not Mastered

Answer: A

Explanation:

Group-based licensing currently does not support groups that contain other groups (nested groups). If you apply a license to a nested group, only the immediate first-level user members of the group have the licenses applied.

References:

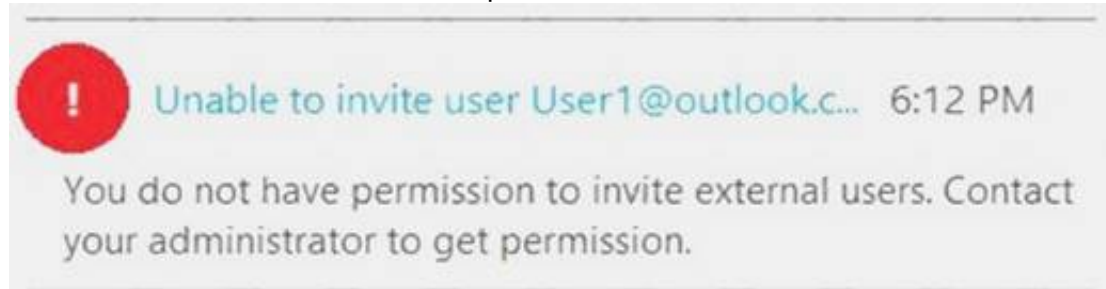
<https://docs.microsoft.com/en-us/azure/active-directory/users-groups-roles/licensing-group-advanced>

NEW QUESTION 5

- (Exam Topic 1)

You have a Microsoft Azure Active Directory (Azure AD) tenant named contoso.onmicrosoft.com. An external user has a Microsoft account that uses an email address of user1@outlook.com.

An administrator named Admin1 attempts to create a user account for the external user and receives the error message shown in the following exhibit.



You need to ensure that Admin1 can add the user.

What should you do from the Azure Active Directory admin center?

- A. Add a custom domain name named outlook.com.
- B. Modify the Authentication methods.
- C. Modify the External collaboration settings.
- D. Assign Admin1 the Security administrator role.

Answer: C

NEW QUESTION 6

- (Exam Topic 1)

Your network contains an Active Directory domain named contoso.com. All users authenticate by using a third-party authentication solution.

You purchase Microsoft 365 and plan to implement several Microsoft 365 services. You need to recommend an identity strategy that meets the following requirements:

- ☒ Provides seamless SSO
- ☒ Minimizes the number of additional servers required to support the solution
- ☒ Stores the passwords of all the users in Microsoft Azure Active Directory (Azure AD)
- ☒ Ensures that all the users authenticate to Microsoft 365 by using their on-premises user account

You are evaluating the implementation of federation. Which two requirements are met by using federation? Each correct answer presents a complete solution. NOTE: Each correct selection is worth one point.

- A. minimizes the number of additional servers required to support the solution
- B. provides seamless SSO
- C. stores the passwords of all the users in Azure AD
- D. ensures that all the users authenticate to Microsoft 365 by using their on-premises user account.

Answer: BD

NEW QUESTION 7

- (Exam Topic 1)

Your network contains an Active Directory forest named local.

You have a Microsoft 365 subscription. You plan to implement a directory synchronization solution that will use password hash synchronization.

From the Microsoft 365 admin center, you verify the contoso.com domain name. You need to prepare the environment for the planned directory synchronization solution.

What should you do first?

- A. From the public DNS zone of contoso.com, add a new mail exchanger (MX) record.
- B. From Active Directory Domains and Trusts, add contoso.com as a UPN suffix
- C. From the Microsoft 365 admin center, verify the contoso.com domain name.
- D. From Active Directory Users and Computers, modify the UPN suffix for all users.

Answer: B

NEW QUESTION 8

- (Exam Topic 1)

Your company has offices in several cities and 100,000 users. The network contains an Active Directory domain contoso.com.

You purchase Microsoft 365 and plan to deploy several Microsoft 365 services.

You are evaluating the implementation of pass-through authentication and seamless SSO. Azure AD Connect will NOT be in staging mode.

You need to identify the redundancy limits for the planned implementation.

What should you identify? To answer, select the appropriate options in the answer area. NOTE: Each correct selection is worth one point.

Maximum number of servers on which you can run
Azure AD Connect:

▼

1
2
4
6
11

Maximum number of servers on which you can run
standalone Authentication Agents:

▼

1
2
4
6
11

- A. Mastered
- B. Not Mastered

Answer: A

Explanation:

Maximum number of servers on which you can run
Azure AD Connect:

▼

1
2
4
6
11

Maximum number of servers on which you can run
standalone Authentication Agents:

▼

1
2
4
6
11

NEW QUESTION 9

- (Exam Topic 1)
Your network contains an on-premises Active Directory domain. You have a Microsoft 365 subscription.
You implement a directory synchronization solution that uses pass-through authentication.
You configure Microsoft Azure Active Directory (Azure AD) smart lockout as shown in the following exhibit.



You discover that Active Directory users can use the passwords in the custom banned passwords list. You need to ensure that banned passwords are effective for all users.

Which three actions should you perform? Each correct answer presents part of the solution. NOTE: Each correct selection is worth one point.

- A. From a domain controller, install the Azure AD Password Protection Proxy.
- B. From a domain controller, install the Microsoft AAD Application Proxy connector.
- C. From Custom banned passwords, modify the Enforce custom list setting.
- D. From Password protection for Windows Server Active Directory, modify the Mode setting.
- E. From all the domain controllers, install the Azure AD Password Protection DC Agent.
- F. From Active Directory, modify the Default Domain Policy.

Answer: ACE

NEW QUESTION 10

- (Exam Topic 1)

Your network contains an Active Directory domain named contoso.com. The domain contains five domain controllers.

You purchase Microsoft 365 and plan to implement several Microsoft 365 services.

You need to identify an authentication strategy for the planned Microsoft 365 deployment. The solution must meet the following requirements:

- ▶ Ensure that users can access Microsoft 365 by using their on-premises credentials.
- ▶ Use the existing server infrastructure only.
- ▶ Store all user passwords on-premises only.
- ▶ Be highly available.

Which authentication strategy should you identify?

- A. pass-through authentication and seamless SSO
- B. pass-through authentication and seamless SSO with password hash synchronization
- C. password hash synchronization and seamless SSO
- D. federation

Answer: A

NEW QUESTION 10

- (Exam Topic 1)

Note: This question is part of a series of questions that present the same scenario. Each question in the series contains a unique solution that might meet the stated goals. Some question sets might have more than one correct solution, while others might not have a correct solution.

After you answer a question in this section, you will NOT be able to return to it. As a result, these questions will not appear in the review screen.

Your company has a Microsoft Office 365 tenant.

You suspect that several Office 365 features were recently updated.

You need to view a list of the features that were recently updated in the tenant.

Solution: You review the Security & Compliance report in the Microsoft 365 admin center. Does this meet the goal?

- A. Yes
- B. No

Answer: B

NEW QUESTION 13

- (Exam Topic 1)

Your company has three main offices and one branch office. The branch office is used for research. The company plans to implement a Microsoft 365 tenant and

to deploy multi-factor authentication.

You need to recommend a Microsoft 365 solution to ensure that multi-factor authentication is enforced only for users in the branch office.

What should you include in the recommendation?

- A. Microsoft Azure Active Directory (Azure AD) conditional access.
- B. Microsoft Azure Active Directory (Azure AD) password protection.
- C. a device compliance policy
- D. a Microsoft Intune device configuration profile

Answer: A

NEW QUESTION 15

- (Exam Topic 1)

Your network contains two Active Directory forests. Each forest contains two domains. All client computers run Windows 10 and are domain-joined.

You plan to configure Hybrid Azure AD join for the computers. You create Microsoft Azure Active Directory (Azure AD) tenant.

You need to ensure that the computers can discover the Azure AD tenant. What should you create?

- A. a new computer account for each computer
- B. a new service connection point (SCP) for each domain
- C. a new trust relationship for each forest
- D. a new service connection point (SCP) for each forest

Answer: D

Explanation:

References:

<https://docs.microsoft.com/en-us/azure/active-directory/devices/hybrid-azuread-join-manual>

NEW QUESTION 16

- (Exam Topic 1)

Note: This question is part of a series of questions that present the same scenario. Each question in the series contains a unique solution that might meet the stated goals. Some question sets might have more than one correct solution, while others might not have a correct solution.

After you answer a question in this section, you will NOT be able to return to it. As a result, these questions will not appear in the review screen.

Your company has a Microsoft Office 365 tenant.

You suspect that several Office 365 features were recently updated.

You need to view a list of the features that were recently updated in the tenant. Solution: You use the View service requests option in the Microsoft 365 admin center. Does this meet the goal?

- A. Yes
- B. NO

Answer: B

NEW QUESTION 17

- (Exam Topic 1)

Your company has a Microsoft Azure Active Directory (Azure AD) tenant named contoso.onmicrosoft.com that contains a user named User1.

You suspect that an imposter is signing in to Azure AD by using the credentials of User1.

You need to ensure that an administrator named Admin1 can view all the sign-in details of User1 from the past 24 hours.

To which three roles should you add Admin1? Each correct answer presents a complete solution. NOTE: Each correct selection is worth one point.

- A. Security administrator
- B. Password administrator
- C. User administrator
- D. Compliance administrator

Answer: ABC

NEW QUESTION 18

- (Exam Topic 1)

You have several Microsoft SharePoint document libraries in your on-premises environment. You have a Microsoft 365 tenant that has directory synchronization implemented.

You plan to move all the document libraries to SharePoint Online.

You need to recommend a migration strategy for the document libraries.

Which three actions should you perform in sequence? To answer, move the appropriate actions from the list of actions to the answer area and arrange them in the correct order.

Actions

Use the SharePoint Migration Tool to migrate the SharePoint data.

Create new SharePoint sites.

Run azcopy.exe to migrate the SharePoint data.

Create a Microsoft Azure Storage account.

Create new SharePoint libraries.

Answer Area

- A. Mastered
 B. Not Mastered

Answer: A

Explanation:

References:

<https://docs.microsoft.com/en-us/sharepointmigration/how-to-use-the-sharepoint-migration-tool>

NEW QUESTION 22

- (Exam Topic 1)

You recently migrated your on-premises email solution to Microsoft Exchange Online and are evaluating which licenses to purchase.

You want the members of two groups named IT and Managers to be able to use the features shown in the following table.

Feature	Available to
Microsoft Azure Active Directory (Azure AD) conditional access	IT group, Managers group
Microsoft Azure Active Directory (Azure AD) Privileged Identity Management	IT group

The IT group contains 50 users. The Managers group contains 200 users.

You need to recommend which licenses must be purchased for the planned solution. The solution must minimize licensing costs.

Which licenses should you recommend?


- A. 250 Microsoft 365 E3 only
 B. 50 Microsoft 365 E 3 and 200 Microsoft 365 E5
 C. 250 Microsoft 365 E5 only
 D. 200 Microsoft 365 E3 and 50 Microsoft 365 E5

Answer: D

NEW QUESTION 23

- (Exam Topic 1)

You have a Microsoft Azure Active Directory (Azure AD) tenant named contoso.com that includes a user named User1.

You enable multi-factor authentication for contoso.com and configure the following two fraud alert settings:  Set Allow users to submit fraud alerts: On

 Automatically block users who report fraud: On

You need to instruct the users in your organization to use the fraud reporting features correctly. What should you tell the users to do? To answer, select the appropriate options in the answer area. NOTE: Each correct selection is worth one point.

A user can report fraud on her account by:

▼

Typing a special code after receiving an alert call
 Sending an email message to an administrator
 Using the Microsoft Authenticator app

If User1 reports fraud on his account, the account will be blocked automatically for:

▼

6 hours
 1 day
 7 days
 90 days

- A. Mastered
 B. Not Mastered

Answer: A

Explanation:

References:

<https://docs.microsoft.com/en-us/azure/active-directory/authentication/howto-mfa-mfasettings#fraud-alert>

NEW QUESTION 28

- (Exam Topic 1)

You have an on premises web application that is published by using a URL of <https://app.contoso.local>. You purchase a Microsoft 365 subscription.

Several external users must be able to connect to the web application

You need to recommend a solution for external access to the application. The solution must support multi-factor authentication.

Which two actions should you recommend? Each correct answer presents part of the solution. NOTE: Each correct selection is worth one point.

- A. From an on-premises server, install a connector, and then publish the app.
- B. From the Azure Active Directory admin center, enable an Application Proxy.
- C. From the Azure Active Directory admin center, create a conditional access policy.
- D. From an on premises server, install an Authentication Agent.
- E. Republish the web-application by using <http://app.contoso.com>

Answer: AB

Explanation:

References:

<https://docs.microsoft.com/en-us/azure/active-directory/manage-apps/application-proxy-add-on-premises-applic>

NEW QUESTION 30

- (Exam Topic 1)

Your network contains an Active Directory domain named contoso.com. You have a Microsoft 365 subscription.

You have a Microsoft Azure Active Directory (Azure AD) tenant named contoso.onmicrosoft.com. You implement directory synchronization.

The developers at your company plan to build an app named App1. App1 will connect to the Microsoft Graph API to provide access to several Microsoft Office 365 services.

You need to provide the URI for the authorization endpoint that App1 must use. What should you provide?

- A. <https://login.microsoftonline.com/>
- B. <https://contoso.com/contoso.onmicrosoft.com/app1>
- C. <https://login.microsoftonline.com/contoso.onmicrosoft.com/>
- D. <https://myapps.microsoft.com>

Answer: C

NEW QUESTION 35

- (Exam Topic 1)

Your company has a Microsoft Azure Active Directory (Azure AD) tenant named contoso.com that includes the users shown in the following table.

Name	Usage location	Membership
User1	United States	Group1, Group2
User2	<i>Not applicable</i>	Group2
User3	<i>Not applicable</i>	Group1
User4	Canada	Group1

Group2 is a member of Group1.

You assign a Microsoft Office 365 Enterprise E3 license to Group1. You need to identify how many Office 365 E3 licenses are assigned. What should you identify?

- A. 1
- B. 2
- C. 3
- D. 4

Answer: C

NEW QUESTION 38

- (Exam Topic 1)

Your on-premises network contains five file servers. The file servers host shares that contain user data. You plan to migrate the user data to a Microsoft 365 subscription.

You need to recommend a solution to import the user data into Microsoft OneDrive. What should you include in the recommendation?

- A. Configure the Migrate of the OneDrive client on your Windows 10 dew
- B. Configure the Sync settings in the OneDrive admin center.
- C. Run the SharePoint Hybrid Configuration Wizard.
- D. Run the SharePoint Migration Tool.

Answer: D

Explanation:

References:

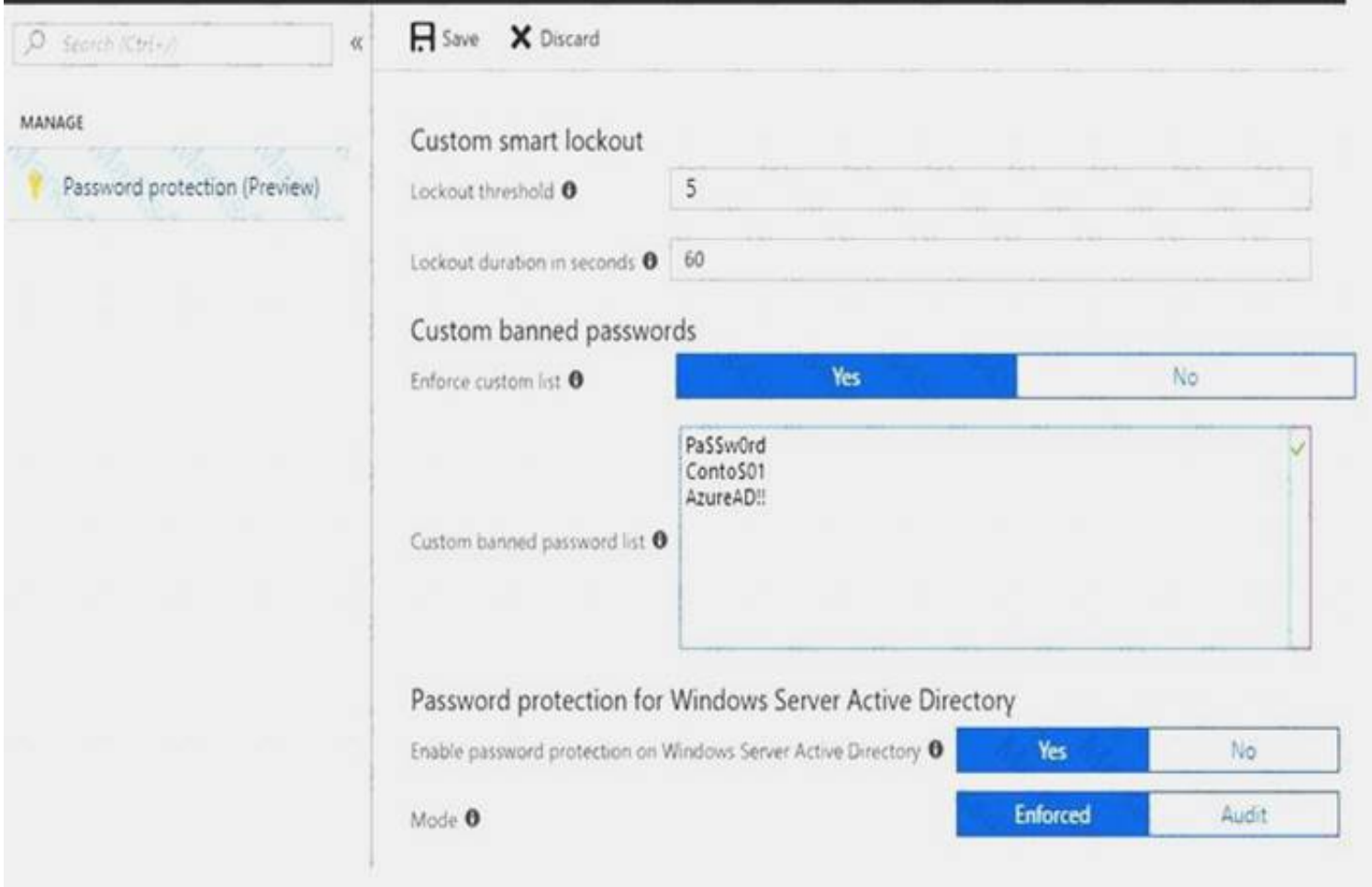
<https://docs.microsoft.com/en-us/sharepointmigration/introducing-the-sharepoint-migration-tool>

NEW QUESTION 41

- (Exam Topic 1)

You have a Microsoft 365 Enterprise subscription.

You create a password policy as shown in the following exhibit.



Use the drop-down menus to select the answer choice that completes each statement based on the information presented in the graphic.
NOTE: Each correct selection is worth one point.

If users are locked out of their account, they have [answer choice].

five sign-in attempts each subsequent minute

one sign-in attempt each subsequent minute

five sign-in attempts every five minutes

one sign-in attempt every five minutes

Users can create a password of [answer choice].

Password11

Conto\$01Pa\$\$word

AzureAD!!111

pa\$\$w0rd

- A. Mastered
- B. Not Mastered

Answer: A

Explanation:

References:

https://docs.microsoft.com/en-us/azure/active-directory/authentication/concept-password-ban-bad

NEW QUESTION 45

- (Exam Topic 1)

Note: This question it part of a series of questions that present the same scenario. Cacti question in the series contains a unique solution that might meet the stated goals. Some question sets might have more than one correct solution, while others might not have a correct solution.

After you answer a question in this section, you will NOT be able to return to it. As a result, these questions will not appear in the review screen.

Your company has a Microsoft Office 36S tenant.

You suspect that several Office 365 features were recently updated.

You need to view a last of the features that were recently updated in the tenant. Solution: You use Message center in the Microsoft 365 admin center.

Does this meet the goal?

- A. Yes
- B. NO

Answer: A

NEW QUESTION 46

- (Exam Topic 1)

Your company has a Microsoft 365 subscription that has multi-factor authentication configured for all users. Users on the network report that they are prompted for multi-factor authentication multiple times a day.

You need to reduce the number of times the users are prompted for multi-factor authentication on their

company-owned devices. What should you do?

- A. Enable the multi-factor authentication trusted IPs setting, and then verify each device as a trusted device.
- B. Enable the remember multi-factor authentication setting, and then verify each device as a trusted device.
- C. Enable the multi-factor authentication trusted IPs setting, and then join all client computers to Microsoft Azure Active Directory (Azure AD).
- D. Enable the remember multi-factor authentication setting, and then join all client computers to Microsoft Azure Active Directory (Azure AD).

Answer: B

Explanation:

References:

<https://docs.microsoft.com/en-us/azure/active-directory/authentication/howto-mfa-mfasettings>

NEW QUESTION 51

- (Exam Topic 1)

Your company has 10,000 users who access all applications from an on-premises data center. You plan to create a Microsoft 365 subscription and to migrate data to the cloud.

You plan to implement directory synchronization.

User account and group accounts must sync to Microsoft Azure Directory (Azure AD) successfully. You discover that several user accounts fail to sync to Azure AD.

You need to identify which user accounts failed to sync. You must resolve the issue as quickly as possible. What should you do?

- A. From Active Directory Administrative Center, search for all the users, and then modify the properties of the user accounts.
- B. Run idfix.exe, and then click Complete.
- C. From Windows PowerShell, run the Start-AdSyncSyncCycle –PolicyType Delta command.
- D. Run idfix.exe, and then click Edit.

Answer: D

NEW QUESTION 53

- (Exam Topic 1)

You purchase Microsoft 365, and then implement directory synchronization. You plan to publish the web applications.

You need to ensure that all the applications are accessible by using the My Apps portal. The solution must minimize administrative effort.

What should you do first?

- A. Deploy one conditional access policy.
- B. Deploy one connector.
- C. Create four application registrations.
- D. Create a site-to-site VPN from Microsoft Azure to the on-premises network.

Answer: B

NEW QUESTION 56

- (Exam Topic 1)

Your company has a Microsoft 365 subscription and a Microsoft Azure Active Directory (Azure AD) tenant named contoso.onmicrosoft.com.

An external vendor has a Microsoft account that has a username of user1@outlook.com. You plan to provide user1@outlook.com with access to several resources in the subscription.

You need to add the external user account to contoso.onmicrosoft.com. The solution must ensure that the external vendor can authenticate by using user1@outlook.com.

What should you do?

- A. From Azure Cloud Shell, run the New-AzureADUser cmdlet and specify –UserPrincipalName user1@outlook.com.
- B. From the Microsoft 365 admin center, add a contact, and then specify user1@outlook.com as the email address.
- C. From the Azure portal, add a new guest user, and then specify user1@outlook.com as the email address.
- D. From the Azure portal, add a custom domain name, and then create a new Azure AD user and use user1@outlook.com as the username.

Answer: C

NEW QUESTION 57

- (Exam Topic 1)

You have a Microsoft 365 subscription. All users have client computers that run Windows 10 and have Microsoft Office 365 ProPlus installed.

Some users in the research department work for extended periods of time without an Internet connection. How many days can the research department users remain offline before they are prevented from editing Office documents?

- A. 10
- B. 30
- C. 90
- D. 120

Answer: B

NEW QUESTION 62

- (Exam Topic 1)

Note: This question is part of a series of questions that present the same scenario. Each question in the series contains a unique solution that might meet the stated goals. Some question sets might have more than one correct solution, while others might not have a correct solution.

After you answer a question in this section, you will NOT be able to return to it. As a result, these questions will not appear in the review screen.

Your network contains an Active Directory forest. You deploy Microsoft 365.

You plan to implement directory synchronization.

You need to recommend a security solution for the synchronized identities. The solution must meet the following requirements:

- ▶ Users must be able to authenticate successfully to Microsoft 365 services if Active Directory becomes unavailable.
- ▶ Users passwords must be 10 characters or more.

Solution: Implement password hash synchronization and modify the password settings from the Default Domain Policy in Active Directory.
Does this meet the goal?

- A. Yes
- B. No

Answer: A

NEW QUESTION 67

- (Exam Topic 1)

Your company has a Microsoft 365 subscription.

You upload several archive PST files to Microsoft 365 by using the Security & Compliance admin center. A month later, you attempt to run an import job for the PST files.

You discover that the PST files were deleted from Microsoft 365.

What is the most likely cause of the files being deleted? More than one answer choice may achieve the goal. Select the BEST answer.

- A. The PST files were corrupted and deleted by Microsoft 365 security features.
- B. PST files are deleted automatically from Microsoft 365 after 30 days.
- C. The size of the PST files exceeded a storage quota and caused the files to be deleted.
- D. Another administrator deleted the PST files.

Answer: B

Explanation:

References:

<https://docs.microsoft.com/en-us/office365/securitycompliance/faqimporting-pst-files-to-office-365>

NEW QUESTION 70

- (Exam Topic 1)

You have a Microsoft 365 Enterprise subscription.

You have a conditional access policy to force multi factor authentication when accessing Microsoft SharePoint from a mobile device

You need to view which users authenticated by using multi factor authentication. What should you do?

- A. From the Microsoft 365 admin center, view the Security Compliance reports.
- B. From the Azure Active Directory admin center, view the user sign-ins.
- C. From the Microsoft 365 admin center, view the Usage reports.
- D. From the Azure Active Directory admin center, view the audit logs.

Answer: B

Explanation:

References:

<https://docs.microsoft.com/en-us/azure/active-directory/authentication/howto-mfa-reporting>

NEW QUESTION 71

- (Exam Topic 1)

Your network contains three Active Directory forests.

You create a Microsoft Azure Active Directory (Azure AD) tenant. You plan to sync the on premises Active Directory (Azure AD).

You need to recommend a synchronization solution. The solution must ensure that the synchronization can complete successfully and as quickly as possible if a single server fails.

What should you include in the recommendation?

- A. Three Azure AD Connect sync servers and three Azure AD Connect sync servers in staging mode
- B. One Azure AD Connect sync servers one Azure AD Connect sync servers in staging mode
- C. Three Azure AD Connect sync servers and one Azure AD Connect sync servers in staging mode
- D. six Azure AD Connect sync servers and three Azure AD Connect sync servers in staging mode

Answer: B

NEW QUESTION 76

- (Exam Topic 1)

Note: This question is part of a series of questions that present the same scenario. Each question in the series contains a unique solution that might meet the stated goals. Some question sets might have more than one correct solution, while others might not have a correct solution.

After you answer a question in this section, you will NOT be able to return to it. As a result, these questions will not appear in the review screen.

Your network contains an Active Directory forest. You deploy Microsoft 365.

You plan to implement directory synchronization.

You need to recommend a security solution for the synchronized identities. The solution must meet the following requirements:

- ▶ Users must be able to authenticate successfully to Microsoft 365 services if Active Directory becomes unavailable.
- ▶ Users passwords must be 10 characters or more.

Solution: Implement pass-through authentication and configure password protection in the Azure AD tenant.

Does this meet the goal?

- A. Yes
- B. No

Answer: B

NEW QUESTION 81

- (Exam Topic 1)

Your company has a Microsoft 365 subscription.

Your plan to add 100 newly hired temporary users to the subscription next week. You create the user accounts for the new users.

You need to assign licenses to the new users. Which command should you run?

- A. `$NewStaff = Get-AzureADUser -All -Department "Temp" -UsageLocation "";
$NewStaff | foreach {Set-AzureADUser -LicenseOptions "contoso:ENTERPRISEPACK"}`
- B. `$NewStaff = Get-AzureADUser -All -Department "Temp" -UsageLocation "US" -UnlicensedUsersOnly;
$NewStaff | foreach {Set-AzureADUserLicense -AddLicenses "contoso:ENTERPRISEPACK"}`
- C. `$NewStaff = Get-AzureADUser -All -Department "Temp" -UsageLocation "";
$NewStaff | foreach {Set-AzureADUserLicense -LicenseOptions "contoso:ENTERPRISEPACK"}`
- D. `$NewStaff = Get-AzureADUser -All -Department "Temp" -UsageLocation "US" -UnlicensedUsersOnly;
$NewStaff | foreach {Set-AzureADUser -AddLicenses "contoso:ENTERPRISEPACK"}`

- A. Option A
B. Option B
C. Option C
D. Option D

Answer: B

NEW QUESTION 84

- (Exam Topic 2)

You need to meet the technical requirements for the user licenses.

Which two properties should you configure for each user? To answer, select the appropriate properties in the answer area.

NOTE: Each correct selection is worth one point.

Identity


Name

User1

User name

User1@Contoso1410.onmicrosoft.com

Object ID

22c31139-c143-4076-a71c-b5d0d5...

First Name

Last Name

User type

Member

Source

Azure Active Directory

Job info

Job title

Department

Manager

Remove Change

Settings

Block sign in

Yes No

Usage location

Contact info

Street address

State or province

Country or region

City

ZIP or postal code

Office phone

Authentication contact info

Phone

Email

Alternate phone

Alternate email

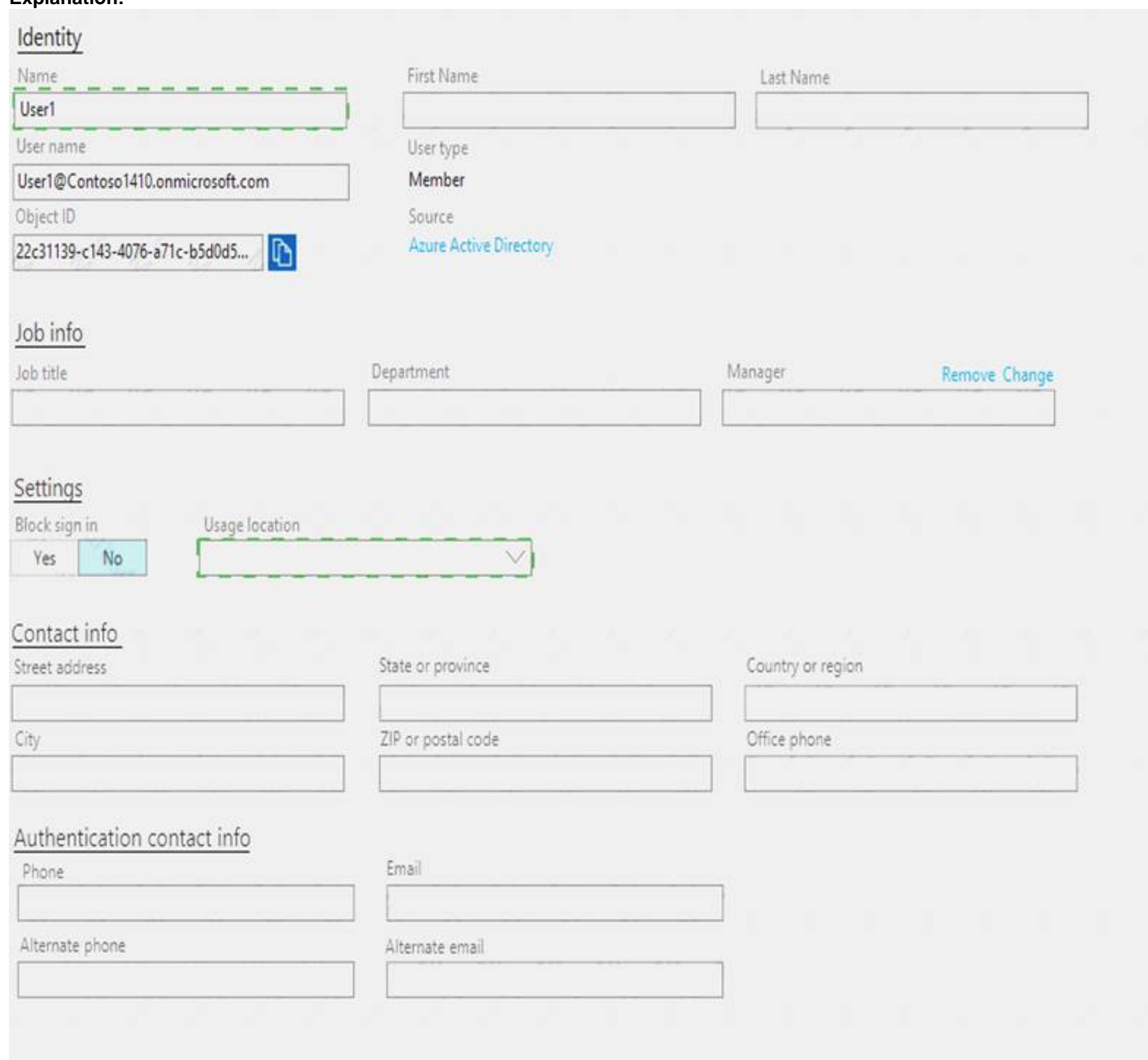
Passing Certification Exams Made Easy

visit - <https://www.2PassEasy.com>

- A. Mastered
- B. Not Mastered

Answer: A

Explanation:



The screenshot shows the Azure AD user management interface for a user named 'User1'. The interface is divided into several sections:

- Identity:** Contains fields for Name (User1), First Name, Last Name, User name (User1@Contoso1410.onmicrosoft.com), User type (Member), Object ID (22c31139-c143-4076-a71c-b5d0d5...), and Source (Azure Active Directory).
- Job info:** Contains fields for Job title, Department, and Manager, along with a 'Remove Change' link.
- Settings:** Contains a 'Block sign in' toggle (set to No) and a 'Usage location' dropdown menu.
- Contact info:** Contains fields for Street address, State or province, Country or region, City, ZIP or postal code, and Office phone.
- Authentication contact info:** Contains fields for Phone, Email, Alternate phone, and Alternate email.

NEW QUESTION 88

- (Exam Topic 2)

To which Azure AD role should you add User4 to meet the security requirement?

- A. Password administrator
- B. Global administrator
- C. Security administrator
- D. Privileged role administrator

Answer: B

NEW QUESTION 92

- (Exam Topic 2)

You need to meet the security requirement for the vendors. What should you do?

- A. From the Azure portal, add an identity provider.
- B. From Azure Cloud Shell, run the New-AzureADUser cmdlet and specify the –UserPrincipalName parameter.
- C. From the Azure portal, create guest accounts.
- D. From Azure Cloud Shell, run the New-AzureADUser cmdlet and specify the –UserType parameter.

Answer: C

NEW QUESTION 96

- (Exam Topic 2)

Note: This question is part of a series of questions that present the same scenario. Each question in the series contains a unique solution that might meet the stated goals. Some question sets might have more than one correct solution, while others might not have a correct solution.

After you answer a question in this section, you will NOT be able to return to it. As a result, these questions will not appear in the review screen.

You need to assign User2 the required roles to meet the security requirements.

Solution: From the Office 365 admin center, you assign User2 the Security Reader role. From the Exchange admin center, you assign User2 the Compliance Management role.

Does this meet the goal?

- A. Yes
- B. NO

Answer: A

NEW QUESTION 100

- (Exam Topic 2)

You need to meet the security requirement for Group1. What should you do?

- A. Configure all users to sign in by using multi-factor authentication.
- B. Modify the properties of Group1.
- C. Assign Group1 a management role.
- D. Modify the Password reset properties of the Azure AD tenant.

Answer: D

Explanation:

References:

<https://docs.microsoft.com/en-us/azure/active-directory/authentication/concept-sspr-howitworks>

NEW QUESTION 105

- (Exam Topic 2)

Note: This question is part of a series of questions that present the same scenario. Each question in the series contains a unique solution that might meet the stated goals- Some question sets might have more than one correct solution, while others might not have a correct solution.

After you answer a question in this section, you will NOT be able to return to it. As a result, these questions will not appear in the review screen.

You need to assign User2 the required roles to meet the security requirement.

Solution: From the Office 365 admin center, you assign User2 the Records Management role. From the Exchange admin center, you assign User2 the Help Desk role.

Does that meet the goal?

- A. Yes
- B. NO

Answer: B

NEW QUESTION 108

- (Exam Topic 2)

Note This question is part of a series of questions that present the same scenario. Each question in the series contains a unique solution that might meet the stated goals. Some question sets might have more than one correct solution, while others might not have a correct solution.

After you answer a question in this section, you will NOT be able to return to it. As a result, these questions will not appear in the review screen.

You need to assign User2 the required roles to meet the security requirements.

Solution: From the Office 365 admin center, you assign User2 the Security Administrator role. From the Exchange admin center, you add User2 to the View-Only Management role.

Does this meet the goal?

- A. Yes
- B. NO

Answer: B

NEW QUESTION 111

- (Exam Topic 3)

You create the Microsoft 365 tenant.

You implement Azure AD Connect as shown in the following exhibit.

Azure Active Directory admin center

Home > Azure AD Connect

Azure AD Connect

Azure Active Directory

Troubleshoot

Refresh

SYNC STATUS

Sync Status

Enabled

Last Sync

Less than 1 hour ago

Password Sync

Enabled

USER SIGN-IN

Federation

Disabled

0 domains

Seamless single sign-on

Disabled

0 domain

Pass-through authentication

Disabled

0 agents

Use the drop-down menus to select the answer choice that completes each statement based on the information presented in the graphic.
NOTE: Each correct selection is worth one point.

Answer Area

Sales department users can access [answer choice] applications by using SSO.

both on-premises and cloud-based

only cloud-based

only on-premises

If Active Directory becomes unavailable, users can access the resource [answer choice].

both on-premises and in the cloud

in the cloud only

on-premises only

- A. Mastered
- B. Not Mastered

Answer: A

Explanation:

Answer Area

Sales department users can access [answer choice] applications by using SSO.

both on-premises and cloud-based

only cloud-based

only on-premises

If Active Directory becomes unavailable, users can access the resource [answer choice].

both on-premises and in the cloud

in the cloud only

on-premises only

NEW QUESTION 113

Passing Certification Exams Made Easy

visit - https://www.2PassEasy.com

- (Exam Topic 3)

You need to prepare the environment for Project1. You create the Microsoft 365 tenant.

Which three actions should you perform in sequence next? To answer, move the appropriate actions from the list of actions to the answer area and arrange them in the correct order.

Actions

Configure the required DNS records and verify fabrikam.com as a custom domain.

Implement directory synchronization.

Create a Microsoft Azure Active Directory (Azure AD) tenant.

Modify the Exchange ActiveSync Access Settings.

Run the Hybrid Configuration wizard.

Answer Area

A. Mastered

B. Not Mastered

Answer: A

Explanation:

Actions

Configure the required DNS records and verify fabrikam.com as a custom domain.

Implement directory synchronization.

Create a Microsoft Azure Active Directory (Azure AD) tenant.

Modify the Exchange ActiveSync Access Settings.

Run the Hybrid Configuration wizard.

Answer Area

Create a Microsoft Azure Active Directory (Azure AD) tenant.

Configure the required DNS records and verify fabrikam.com as a custom domain.

Implement directory synchronization.

NEW QUESTION 115

- (Exam Topic 3)

You need to create the UserLicenses group. The solution must meet the security requirements.

Which group type and control method should you use? To answer, select the appropriate options in the answer area.

NOTE: Each correct selection is worth one point.

Answer Area

Group type:

▼
Distribution list
Office 365 group
Security group

Control method:

▼
a conditional access policy
a retention policy
an access review
an alert policy

A. Mastered

B. Not Mastered

Answer: A

Explanation:

Answer Area

Group type:

▼
Distribution list
Office 365 group
Security group

Control method:

▼
a conditional access policy
a retention policy
an access review
an alert policy

NEW QUESTION 117

- (Exam Topic 3)

Which role should you assign to User1?

- A. Security Administrator
- B. Records Management
- C. Security Reader
- D. Hygiene Management

Answer: C

NEW QUESTION 122

- (Exam Topic 3)

You need to meet the application requirement for App1.

Which three actions should you perform? Each correct answer presents part of the solution. NOTE: Each correct selection is worth one point.

- A. From the Azure Active Directory admin center, configure the application URL settings.
- B. From the Azure Active Directory admin center, add an enterprise application.
- C. On an on-premises server, download and install the Microsoft AAD Application Proxy connector.
- D. On an on-premises server, install the Hybrid Configuration wizard.
- E. From the Microsoft 365 admin center, configure the Software download settings.

Answer: ABC

Explanation:

References:

<https://docs.microsoft.com/en-us/azure/active-directory/manage-apps/application-proxy#how-application-proxy->

NEW QUESTION 124

.....

THANKS FOR TRYING THE DEMO OF OUR PRODUCT

Visit Our Site to Purchase the Full Set of Actual MS-100 Exam Questions With Answers.

We Also Provide Practice Exam Software That Simulates Real Exam Environment And Has Many Self-Assessment Features. Order the MS-100 Product From:

<https://www.2passeasy.com/dumps/MS-100/>

Money Back Guarantee

MS-100 Practice Exam Features:

- * MS-100 Questions and Answers Updated Frequently
- * MS-100 Practice Questions Verified by Expert Senior Certified Staff
- * MS-100 Most Realistic Questions that Guarantee you a Pass on Your FirstTry
- * MS-100 Practice Test Questions in Multiple Choice Formats and Updatesfor 1 Year