

Microsoft

Exam Questions MS-100

Microsoft 365 Identity and Services



NEW QUESTION 1

- (Exam Topic 1)

Your network contains a single Active Directory domain and two Microsoft Azure Active Directory (Azure AD) tenants. You plan to implement directory synchronization for both Azure AD tenants. Each tenant will contain some of the Active Directory users. You need to recommend a solution for the planned directory synchronization. What should you include in the recommendation?

- A. Deploy two servers that run Azure AD Connect, and then filter the users for each tenant by using organizational unit (OU)-based filtering.
- B. Deploy one server that runs Azure AD Connect, and then specify two sync groups.
- C. Deploy one server that runs Azure AD Connect, and then filter the users for each tenant by usingorganizational unit (OU)-based filtering.
- D. Deploy one server that runs Azure AD Connect, and then filter the users for each tenant by using domainbased filtering.

Answer: A

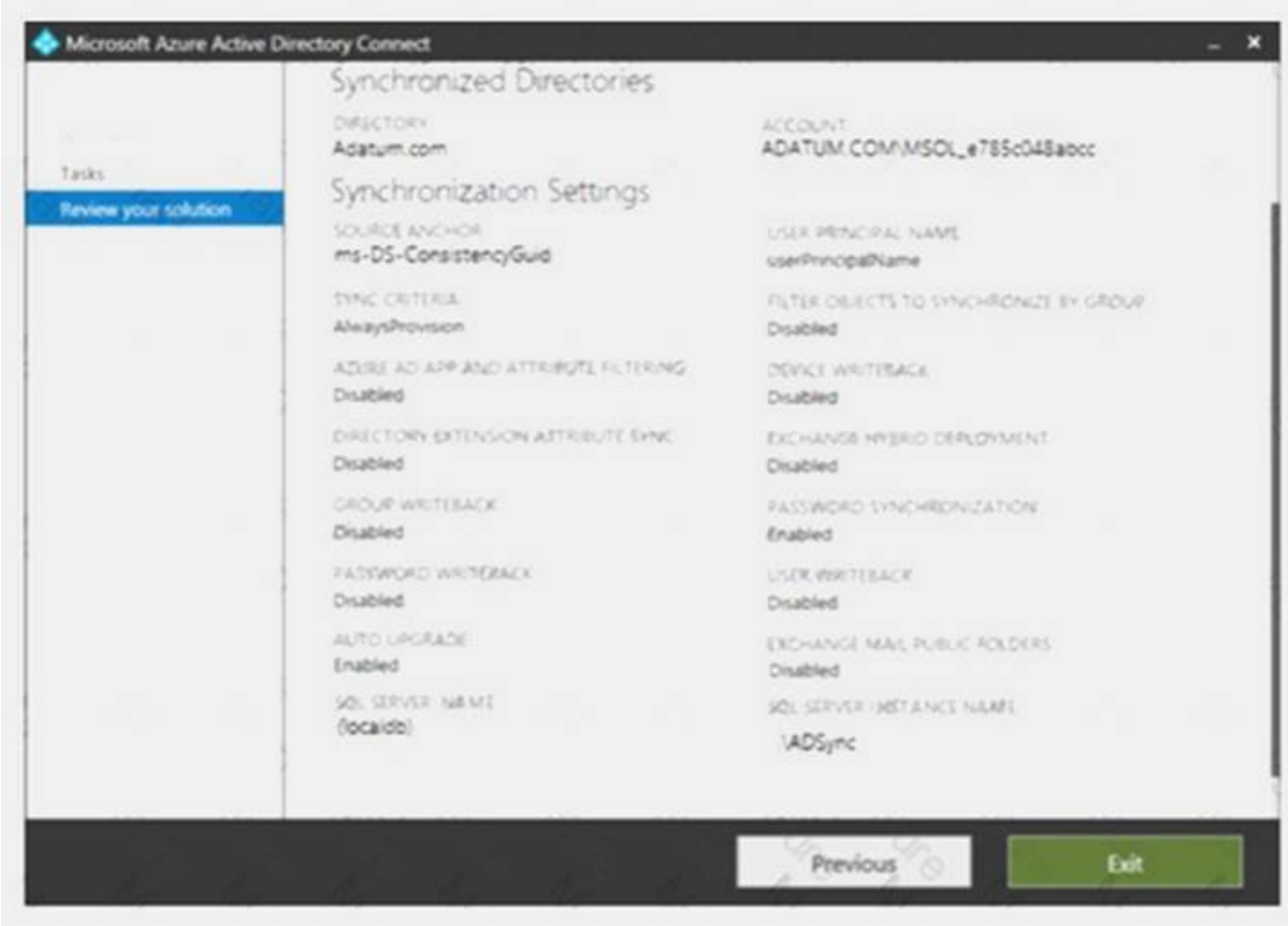
Explanation:

References:
https://docs.microsoft.com/en-us/azure/active-directory/hybrid/plan-connect-topologies#multiple-azure-adtenant

NEW QUESTION 2

- (Exam Topic 1)

Your network contains an on-premises Active Directory domain that is synced to Microsoft Azure Active Directory (Azure AD) as shown in the following exhibit.



An on-premises Active Directory user account named Allan Yoo is synchronized to Azure AD. You view Allan's account from Microsoft 365 and notice that his username is set to Allan@contoso.onmicrosoft.com. For each of the following statements, select Yes if the statement is true. Otherwise, select No. NOTE: Each correct selection is worth one point.

| Statements | Yes | No |
|---|-----------------------|-----------------------|
| From the Azure portal, you can reset the password of Allan Yoo. | <input type="radio"/> | <input type="radio"/> |
| From the Azure portal, you can configure the job title of Allan Yoo. | <input type="radio"/> | <input type="radio"/> |
| From the Azure portal, you can configure the usage location of Allan Yoo. | <input type="radio"/> | <input type="radio"/> |

- A. Mastered
- B. Not Mastered

Answer: A

Explanation:

| Statements | Yes | No |
|---|----------------------------------|----------------------------------|
| From the Azure portal, you can reset the password of Allan Yoo. | <input type="radio"/> | <input checked="" type="radio"/> |
| From the Azure portal, you can configure the job title of Allan Yoo. | <input type="radio"/> | <input checked="" type="radio"/> |
| From the Azure portal, you can configure the usage location of Allan Yoo. | <input checked="" type="radio"/> | <input type="radio"/> |

NEW QUESTION 3

- (Exam Topic 1)

Note: This question is part of a series of questions that present the same scenario. Each question in the series contains a unique solution that might meet the stated goals. Some question sets might have more than one correct solution, while others might not have a correct solution.

After you answer a question in this section, you will NOT be able to return to it. As a result, these questions will not appear in the review screen.

Your company has a Microsoft Office 365 tenant.

You suspect that several Office 365 features were recently updated.

You need to view a list of the features that were recently updated in the tenant.

Solution: You review the Security & Compliance report in the Microsoft 365 admin center. Does this meet the goal?

A. Yes

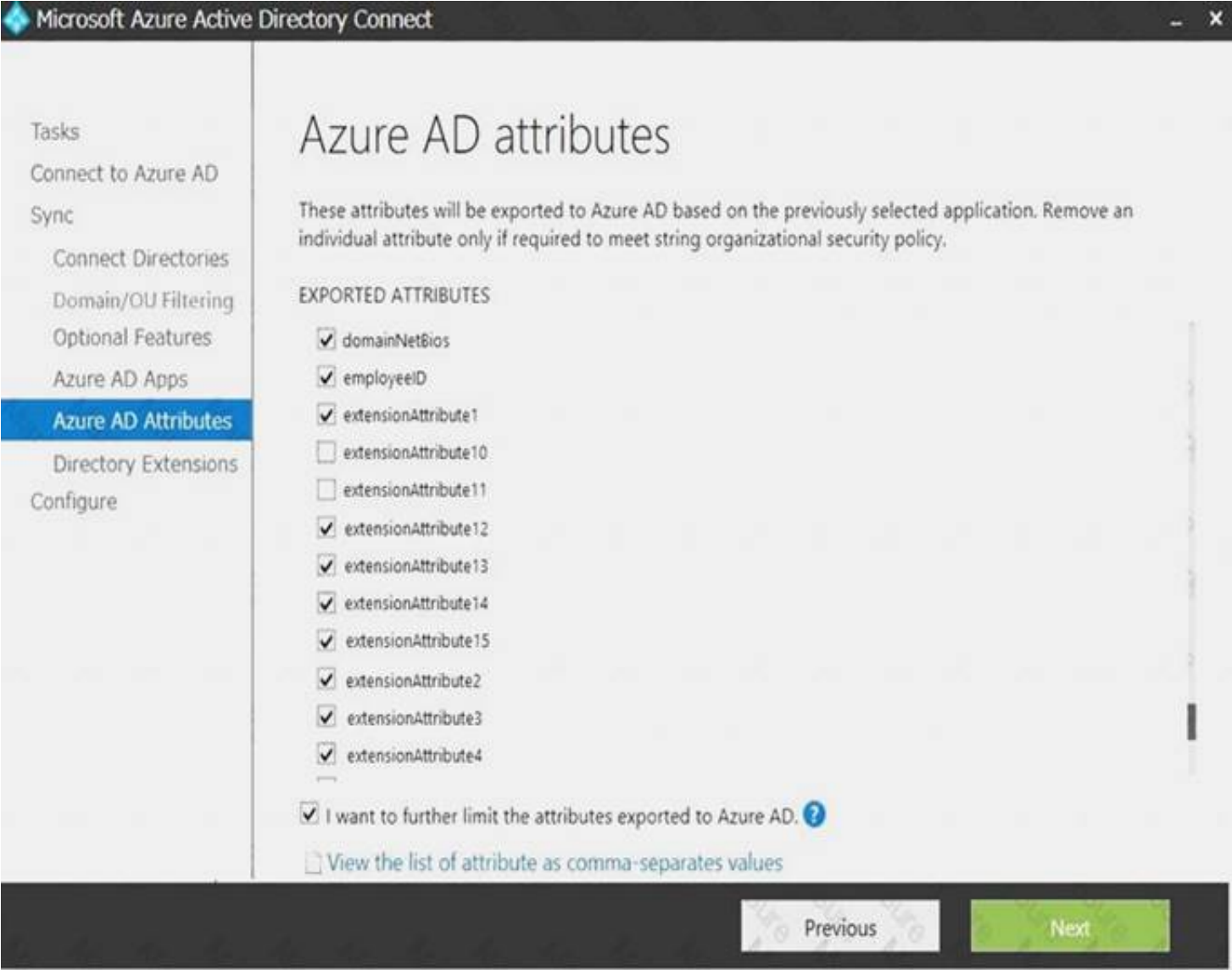
B. No

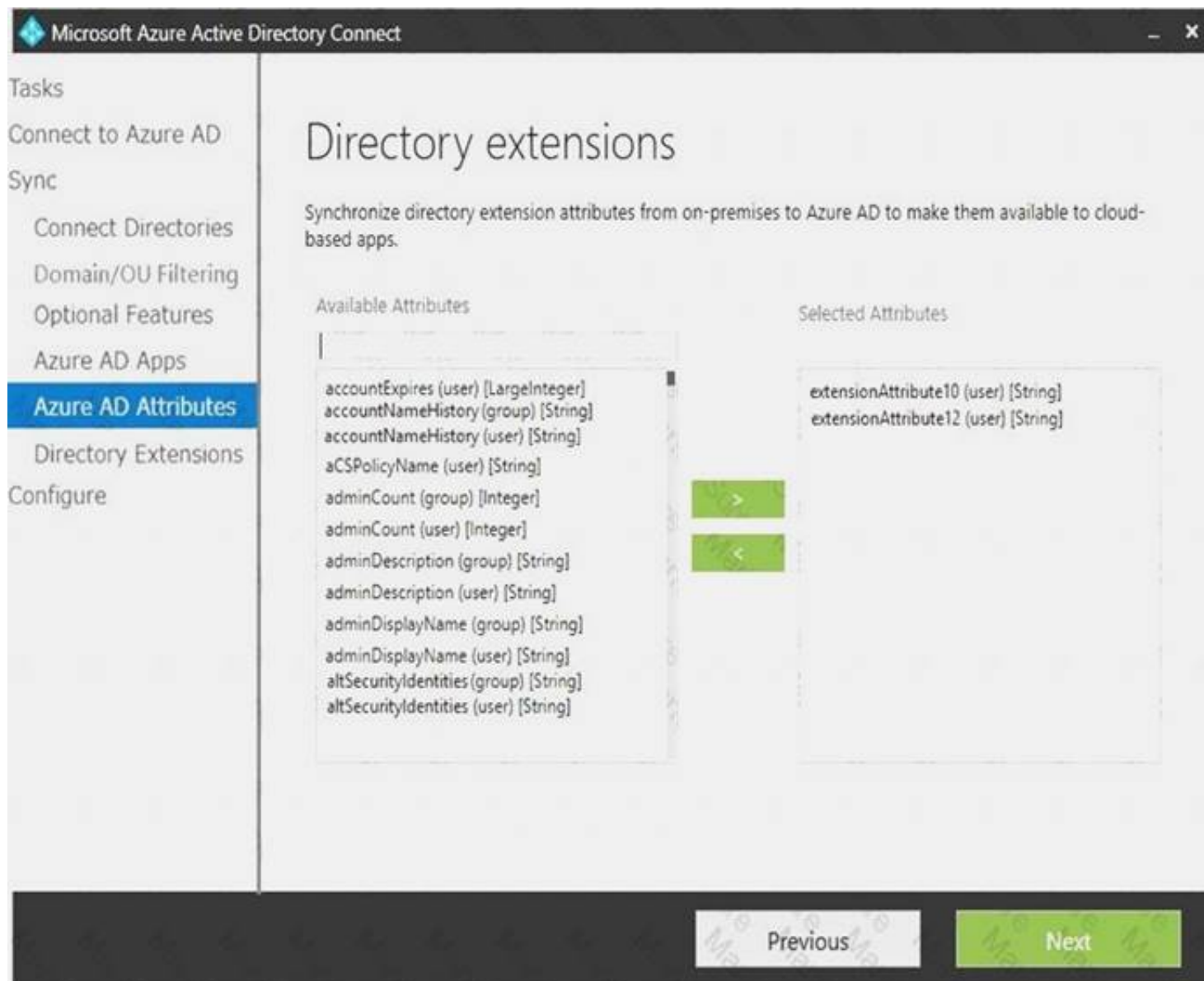
Answer: B

NEW QUESTION 4

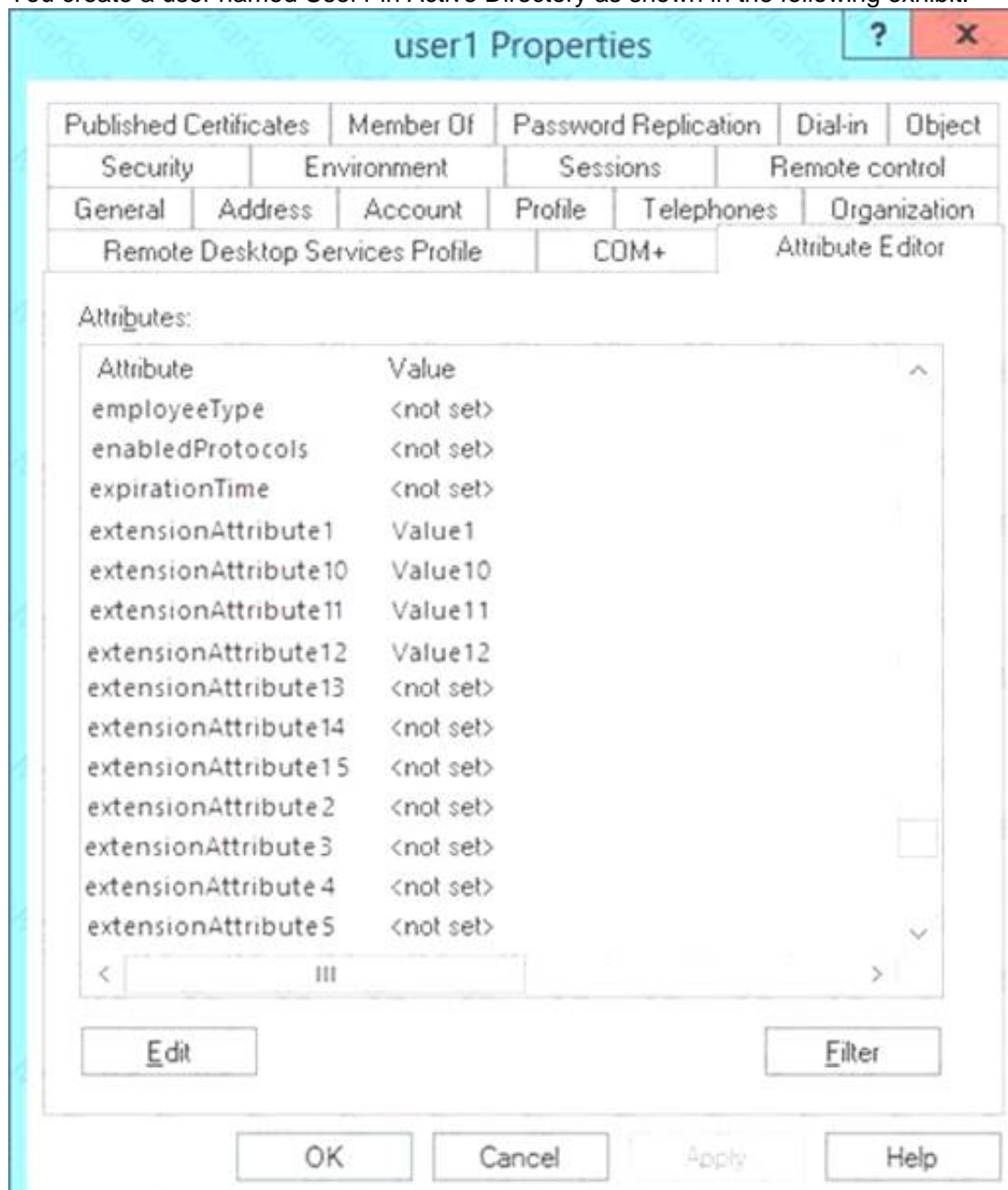
- (Exam Topic 1)

Your network contains an on-premises Active Directory domain that is synced to Microsoft Azure Active Directory (Azure AD) as shown in the following two exhibits.





You create a user named User1 in Active Directory as shown in the following exhibit.



For each of the following statements, select Yes if the statement is true. Otherwise, select No. NOTE: Each correct selection is worth one point.

| Statements | Yes | No |
|--|-----------------------|-----------------------|
| The value of extensionAttribute1 is synchronized to Azure AD. | <input type="radio"/> | <input type="radio"/> |
| The value of extensionAttribute10 is synchronized to Azure AD. | <input type="radio"/> | <input type="radio"/> |
| The value of extensionAttribute11 is synchronized to Azure AD. | <input type="radio"/> | <input type="radio"/> |
| The value of extensionAttribute12 is synchronized to Azure AD. | <input type="radio"/> | <input type="radio"/> |

- A. Mastered
- B. Not Mastered

Answer: A

Explanation:

| Statements | Yes | No |
|--|----------------------------------|----------------------------------|
| The value of extensionAttribute1 is synchronized to Azure AD. | <input checked="" type="radio"/> | <input type="radio"/> |
| The value of extensionAttribute10 is synchronized to Azure AD. | <input checked="" type="radio"/> | <input type="radio"/> |
| The value of extensionAttribute11 is synchronized to Azure AD. | <input type="radio"/> | <input checked="" type="radio"/> |
| The value of extensionAttribute12 is synchronized to Azure AD. | <input checked="" type="radio"/> | <input type="radio"/> |

NEW QUESTION 5

- (Exam Topic 1)
Your company has three main offices and one branch office. The branch office is used for research. The company plans to implement a Microsoft 365 tenant and to deploy multi-factor authentication.
You need to recommend a Microsoft 365 solution to ensure that multi-factor authentication is enforced only for users in the branch office.
What should you include in the recommendation?

- A. Microsoft Azure Active Directory (Azure AD) conditional access.
- B. Microsoft Azure Active Directory (Azure AD) password protection.
- C. a device compliance policy
- D. a Microsoft Intune device configuration profile

Answer: A

NEW QUESTION 6

- (Exam Topic 1)
Your company has 500 client computers that run Windows 10.
You plan to deploy Microsoft Office 365 ProPlus to all the computers. You create the following XML file for the planned deployment.

```
<Configuration>
  <Add OfficeClientEdition="64" Channel="Broad" ForceUpgrade="TRUE">
    <Product ID="0365ProPlusRetail">
      <Language ID="en-us"/>
      <ExcludeApp ID="Groove"/>
      <ExcludeApp ID="Publisher"/>
    </Product>
  </Add>
  <Updates Enabled="TRUE" Channel="Broad" Deadline="03/31/2019, 00:00"
UpdatePath="\\sccm\updates"/>
  <Display Level="Full" AcceptEULA="TRUE"/>
  <Property Name="FORCEAPPSHUTDOWN" Value="TRUE"/>
  <Property Name="SharedComputerLicensing" Value="0"/>
  <Property Name="PinIconsToTaskbar" Value="TRUE"/>
</Configuration>
```

Use the drop-down menus to select the answer choice that completes each statement based on the information presented in the graphic.
NOTE: Each correct selection is worth one point.

When the installation is complete [answer choice].

| |
|--|
| |
| all users will be prompted to accept the EULA |
| all users will be prompted to install several updates |
| all semi-channel updates will be installed automatically |

Office 365 ProPlus will [answer choice].

| |
|--|
| |
| include Microsoft OneDrive for Business and Microsoft Outlook only |
| be installed on all the computers |
| be installed only on the computers that run a 64-bit version of Windows 10 |

- A. Mastered
B. Not Mastered

Answer: A

Explanation:

When the installation is complete [answer choice].

| |
|--|
| |
| all users will be prompted to accept the EULA |
| all users will be prompted to install several updates |
| all semi-channel updates will be installed automatically |

Office 365 ProPlus will [answer choice].

| |
|--|
| |
| include Microsoft OneDrive for Business and Microsoft Outlook only |
| be installed on all the computers |
| be installed only on the computers that run a 64-bit version of Windows 10 |

NEW QUESTION 7

- (Exam Topic 1)

Note: This question is part of a series of questions that present the same scenario. Each question in the series contains a unique solution that might meet the stated goals. Some question sets might have more than one correct solution, while others might not have a correct solution.

After you answer a question in this section, you will NOT be able to return to it. As a result, these questions will not appear in the review screen.

Your company has a Microsoft Office 365 tenant.

You suspect that several Office 365 features were recently updated.

You need to view a list of the features that were recently updated in the tenant. Solution: You use the View service requests option in the Microsoft 365 admin center. Does this meet the goal?

- A. Yes
B. NO

Answer: B

NEW QUESTION 8

- (Exam Topic 1)

Your company has a Microsoft Azure Active Directory (Azure AD) directory tenant named contoso.onmicrosoft.com.

All users have client computers that run Windows 10 Pro and are joined to Azure AD. The company purchases a Microsoft 365 E3 subscription.

You need to upgrade all the computers to Windows 10 Enterprise. The solution must minimize administrative effort.

You assign licenses from the Microsoft 365 admin center. What should you do next?

- A. Add a custom domain name to the subscription.
B. Deploy Windows 10 Enterprise by using Windows Autopilot.
C. Create provisioning package, and then deploy the package to all the computers.
D. Instruct all the users to log off of their computer, and then to log in again.

Answer: B

NEW QUESTION 9

- (Exam Topic 1)

Your company has an on-premises Microsoft Exchange Server 2013 organization. The company has 100 users.

The company purchases Microsoft 365 and plans to move its entire on-premises infrastructure to the cloud.

The company does NOT plan to sync the on-premises Active Directory domain to Microsoft Azure Active Directory (Azure AD).

You need to recommend which type of migration to use to move all email messages, contacts, and calendar items to Exchange Online.

What should you recommend?

- A. cutover migration
B. IMAP migration
C. remote move migration

D. staged migration

Answer: A

Explanation:

References:

<https://docs.microsoft.com/en-us/exchange/mailbox-migration/cutover-migration-to-office-365>

NEW QUESTION 10

- (Exam Topic 1)

Your company has a Microsoft 365 subscription.

You need to identify all the users in the subscription who are licensed for Microsoft Office 365 through a group membership. The solution must include the name of the group used to assign the license.

What should you use?

- A. the Licenses blade in the Azure portal
- B. Reports in the Microsoft 365 admin center
- C. Active users in the Microsoft 365 admin center
- D. Report in Security & Compliance

Answer: A

NEW QUESTION 10

- (Exam Topic 1)

You have a Microsoft 365 Enterprise E5 subscription.

You need to enforce multi-factor authentication on all cloud-based applications for the users in the finance department.

What should you do?

- A. Create an activity policy.
- B. Create a Sign-in risk policy.
- C. Create a session policy.
- D. Create an app permission policy.

Answer: B

Explanation:

References:

<https://docs.microsoft.com/en-us/azure/active-directory/identity-protection/howto-sign-in-risk-policy>

NEW QUESTION 11

- (Exam Topic 1)

Your on-premises network contains five file servers. The file servers host shares that contain user data. You plan to migrate the user data to a Microsoft 365 subscription.

You need to recommend a solution to import the user data into Microsoft OneDrive. What should you include in the recommendation?

- A. Configure the Migrate of the OneDrive client on your Windows 10 dew
- B. Configure the Sync settings in the OneDrive admin center.
- C. Run the SharePoint Hybrid Configuration Wizard.
- D. Run the SharePoint Migration Tool.

Answer: D

Explanation:

References:

<https://docs.microsoft.com/en-us/sharepointmigration/introducing-the-sharepoint-migration-tool>

NEW QUESTION 14

- (Exam Topic 1)

You purchase Microsoft 365, and then implement directory synchronization. You plan to publish the web applications.

You need to ensure that all the applications are accessible by using the My Apps portal. The solution must minimize administrative effort.

What should you do first?

- A. Deploy one conditional access policy.
- B. Deploy one connector.
- C. Create four application registrations.
- D. Create a site-to-site VPN from Microsoft Azure to the on-premises network.

Answer: B

NEW QUESTION 18

- (Exam Topic 1)

You have a Microsoft 365 subscription that contains several Microsoft SharePoint Online sites. You discover that users from your company can invite external users to access files on the SharePoint sites. You need to ensure that the company users can invite only authenticated guest users to the sites. What should you do?

- A. From the Microsoft 365 admin center, configure a partner relationship.
- B. From SharePoint Online Management Shell, run the set-SPOSite cmdlet.
- C. From the Azure Active Directory admin center, configure a conditional access policy.

D. From the SharePoint admin center, configure the sharing settings.

Answer: D

NEW QUESTION 22

- (Exam Topic 1)

You have a Microsoft 365 subscription that contains a Microsoft Azure Active Directory (Azure AD) tenant named contoso.com. The tenant includes a user named User1

You enable Azure AD Identity Protection.

You need to ensure that User1 can review the list in Azure AD Identity Protection of users nagged for risk. The solution must use the principle of least privilege. To which role should you add User1?

- A. Security reader
- B. Compliance administrator
- C. Reports reader
- D. Global administrator

Answer: A

NEW QUESTION 24

- (Exam Topic 1)

Note: This question is part of a series of questions that present the same scenario. Each question in the series contains a unique solution that might meet the stated goals. Some question sets might have more than one correct solution, while others might not have a correct solution.

After you answer a question in this section, you will NOT be able to return to it. As a result, these questions will not appear in the review screen.

Your network contains an Active Directory forest. You deploy Microsoft 365.

You plan to implement directory synchronization.

You need to recommend a security solution for the synchronized identities. The solution must meet the following requirements:

- ☒ Users must be able to authenticate successfully to Microsoft 365 services if Active Directory becomes unavailable.
- ☒ Users passwords must be 10 characters or more.

Solution: Implement password hash synchronization and configure password protection in the Azure AD tenant.

Does this meet the goal?

- A. Yes
- B. No

Answer: B

NEW QUESTION 28

- (Exam Topic 1)

You have a Microsoft 365 Enterprise subscription.

You have a conditional access policy to force multi factor authentication when accessing Microsoft SharePoint from a mobile device

You need to view which users authenticated by using multi factor authentication. What should you do?

- A. From the Microsoft 365 admin center, view the Security Compliance reports.
- B. From the Azure Active Directory admin center, view the user sign-ins.
- C. From the Microsoft 365 admin center, view the Usage reports.
- D. From the Azure Active Directory admin center, view the audit logs.

Answer: B

Explanation:

References:

<https://docs.microsoft.com/en-us/azure/active-directory/authentication/howto-mfa-reporting>

NEW QUESTION 31

- (Exam Topic 1)

You create a Microsoft 365 Enterprise subscription. You assign licenses for all products to all users.

You need to ensure that all Microsoft Office 365 ProPlus installations occur from a network share. The solution must prevent the users from installing Office 365 ProPlus from the Internet.

Which three actions should you perform? Each correct answer presents part of the solution. NOTE: Each correct selection is worth one point.

- A. From your computer, run setup.exe /download downloadconfig.xml.
- B. Create an XML download file.
- C. From the Microsoft 365 admin center, deactivate the Office 365 licenses for all the users.
- D. From each client computer, run setup.exe /configure installconfig.xml.
- E. From the Microsoft 365 admin center, configure the Software download settings.

Answer: BDE

Explanation:

References:

<https://docs.microsoft.com/en-us/deployoffice/overview-of-the-office-2016-deployment-tool#download-the-inst>

NEW QUESTION 33

- (Exam Topic 2)

You need to Add the custom domain name* to Office 365 K> support the planned changes as quickly as possible.

What should you create to verify the domain names successfully?

- A. three alias (CNAME) record
- B. one text (TXT) record
- C. one alias (CNAME) record
- D. three text (TXT) record

Answer: D

NEW QUESTION 37

- (Exam Topic 2)
You need to meet the security requirement for the vendors. What should you do?

- A. From the Azure portal, add an identity provider.
- B. From Azure Cloud Shell, run the New-AzureADUser cmdlet and specify the –UserPrincipalName parameter.
- C. From the Azure portal, create guest accounts.
- D. From Azure Cloud Shell, run the New-AzureADUser cmdlet and specify the –UserType parameter.

Answer: C

NEW QUESTION 39

- (Exam Topic 3)
You create the Microsoft 365 tenant.
You implement Azure AD Connect as shown in the following exhibit.

Azure Active Directory admin center

Home > Azure AD Connect

Azure AD Connect

Azure Active Directory

Troubleshoot

Refresh

SYNC STATUS

Sync Status

Enabled

Last Sync

Less than 1 hour ago

Password Sync

Enabled

USER SIGN-IN

Federation

Disabled

0 domains

Seamless single sign-on

Disabled

0 domain

Pass-through authentication

Disabled

0 agents

Use the drop-down menus to select the answer choice that completes each statement based on the information presented in the graphic.
NOTE: Each correct selection is worth one point.

Answer Area

Sales department users can access [answer choice] applications by using SSO.

both on-premises and cloud-based

only cloud-based

only on-premises

If Active Directory becomes unavailable, users can access the resource [answer choice].

both on-premises and in the cloud

in the cloud only

on-premises only

A. Mastered

Passing Certification Exams Made Easy

visit - <https://www.surepassexam.com>

B. Not Mastered

Answer: A

Explanation:

Answer Area

Sales department users can access [answer choice] applications by using SSO.

▼

both on-premises and cloud-based

only cloud-based

only on-premises

If Active Directory becomes unavailable, users can access the resource [answer choice].

▼

both on-premises and in the cloud

in the cloud only

on-premises only

NEW QUESTION 42

- (Exam Topic 3)

You need to ensure that all the sales department users can authenticate successfully during Project1and Project2. Which authentication strategy should you implement for the pilot projects?

- A. password hash synchronization and seamless SSO
- B. pass-through authentication
- C. password hash synchronization
- D. pass-through authentication and seamless SSO

Answer: A

Explanation:

References:

<https://docs.microsoft.com/en-us/azure/security/azure-ad-choose-authn>

NEW QUESTION 46

- (Exam Topic 3)

You need to prepare the environment for Project1. You create the Microsoft 365 tenant.

Which three actions should you perform in sequence next? To answer, move the appropriate actions from the list of actions to the answer area and arrange them in the correct order.

Actions

Configure the required DNS records and verify fabrikam.com as a custom domain.

Implement directory synchronization.

Create a Microsoft Azure Active Directory (Azure AD) tenant.

Modify the Exchange ActiveSync Access Settings.

Run the Hybrid Configuration wizard.

Answer Area

- A. Mastered
- B. Not Mastered

Answer: A

Explanation:

Actions

- Configure the required DNS records and verify fabrikam.com as a custom domain.
- Implement directory synchronization.
- Create a Microsoft Azure Active Directory (Azure AD) tenant.
- Modify the Exchange ActiveSync Access Settings.
- Run the Hybrid Configuration wizard.

Answer Area

- Create a Microsoft Azure Active Directory (Azure AD) tenant.
- Configure the required DNS records and verify fabrikam.com as a custom domain.
- Implement directory synchronization.

NEW QUESTION 49

- (Exam Topic 3)
Which migration solution should you recommend for Project1?

- A. From Exchange Online PowerShell, run the New-MailboxImportRequest cmdlet.
- B. From Exchange Online PowerShell, run the New-MailboxExportRequest cmdlet.
- C. From the Microsoft 365 admin center, start a data migration and click Upload PSST as the data service.
- D. From the Exchange admin center, start a migration and select Remote move migration

Answer: D

NEW QUESTION 54

.....

Thank You for Trying Our Product

We offer two products:

1st - We have Practice Tests Software with Actual Exam Questions

2nd - Questions and Answers in PDF Format

MS-100 Practice Exam Features:

- * MS-100 Questions and Answers Updated Frequently
- * MS-100 Practice Questions Verified by Expert Senior Certified Staff
- * MS-100 Most Realistic Questions that Guarantee you a Pass on Your FirstTry
- * MS-100 Practice Test Questions in Multiple Choice Formats and Updatesfor 1 Year

100% Actual & Verified — Instant Download, Please Click
[Order The MS-100 Practice Test Here](#)