

PMP

Exam Questions PMP

Project Management Professional



NEW QUESTION 1

- (Topic 1)

Plan Risk Management is the process of defining how to:

- A. Communicate identified risks to the project stakeholders.
- B. Conduct risk management activities for a project.
- C. Analyze the impact a specific risk may have on the project.
- D. Address unexpected risks that may occur during a project.

Answer: B

NEW QUESTION 2

- (Topic 1)

What is the risk rating if the probability of occurrence is 0.30 and the impact if it does occur is moderate (0.20)?

- A. 0.03
- B. 0.06
- C. 0.10
- D. 0.50

Answer: B

NEW QUESTION 3

- (Topic 1)

What entity is assigned various responsibilities related to the centralized and coordinated management of those projects under its domain?

- A. Project management office
- B. Project team office
- C. Executive sponsor office
- D. Program management office

Answer: A

NEW QUESTION 4

- (Topic 1)

Which of the following is an example of a risk symptom?

- A. Failure to meet intermediate milestones
- B. Force of nature, such as a flood
- C. Risk threshold target
- D. Crashing, front loading, or fast tracking

Answer: A

NEW QUESTION 5

- (Topic 1)

A project can be defined as a:

- A. Temporary endeavor undertaken to create a unique product, service, or result
- B. Temporary endeavor that produces repetitive outputs
- C. Permanent endeavor undertaken to create a unique product, service, or result
- D. Permanent endeavor that produces repetitive outputs

Answer: A

NEW QUESTION 6

- (Topic 1)

Which of the following is the primary output of the Identify Risks process?

- A. Risk management plan
- B. Risk register
- C. Change requests
- D. Risk response plan

Answer: B

NEW QUESTION 7

- (Topic 1)

The initial development of a Project Scope Management plan uses which technique?

- A. Alternatives identification
- B. Scope decomposition
- C. Expert judgment
- D. Product analysis

Answer: C

NEW QUESTION 8

- (Topic 1)

Monte Carlo is which type of risk analysis technique?

- A. Probability
- B. Quantitative
- C. Qualitative
- D. Sensitivity

Answer: B

NEW QUESTION 9

- (Topic 1)

Which Process Group and Knowledge Area include the Sequence Activities process?

- A. Executing Process Group and Project Time Management
- B. Executing Process Group and Project Cost Management
- C. Planning Process Group and Project Time Management
- D. Planning Process Group and Project Cost Management

Answer: C

NEW QUESTION 10

- (Topic 1)

An input required to develop a preliminary project scope statement is:

- A. Organizational Structure
- B. Organizational Process Assets
- C. Organizational Matrix
- D. Organizational Breakdown Structures

Answer: B

NEW QUESTION 10

- (Topic 1)

What name(s) is (are) associated with the Plan-Do-Check-Act cycle?

- A. Pareto
- B. Ishikawa
- C. Shewhart-Deming
- D. Delphi

Answer: C

NEW QUESTION 11

- (Topic 1)

Which of the following strategies is used to deal with risks that may have a negative impact on project objectives?

- A. Exploit
- B. Share
- C. Enhance
- D. Transfer

Answer: D

NEW QUESTION 12

- (Topic 1)

A primary function of a project management office is to support project managers in a variety of ways, including which of the following?

- A. Developing and managing project policies, procedures, templates, and other shared documentation
- B. Acting as the project sponsor by providing financial resources to the project
- C. Resolving issues and change management within a shared governance structure
- D. Aligning organizational/strategic direction that affects project and program goals

Answer: A

NEW QUESTION 13

- (Topic 1)

Who selects the appropriate processes for a project?

- A. Project stakeholders
- B. Project sponsor and project stakeholder
- C. Project manager and project team

D. Project manager and project sponsor

Answer: C

NEW QUESTION 16

- (Topic 1)

Skills necessary for project management such as motivating to provide encouragement; listening actively; persuading a team to perform an action; and summarizing, recapping, and identifying next steps are known as:

- A. organizational skills
- B. technical skills
- C. communication skills
- D. hard skills

Answer: C

NEW QUESTION 19

- (Topic 1)

Who is responsible for determining which processes from the Process Groups will be employed and who will be performing them?

- A. Project sponsor and project manager
- B. Project sponsor and functional manager
- C. Project manager and project team
- D. Project team and functional manager

Answer: C

NEW QUESTION 20

- (Topic 1)

Which input to the Manage Stakeholder Engagement process provides guidance on how stakeholders can best be involved in a project?

- A. Feedback analysis
- B. Stakeholder analysis
- C. Communication management plan
- D. Stakeholder management plan

Answer: D

NEW QUESTION 23

- (Topic 1)

Which statement correctly describes the value of a business case?

- A. It provides the necessary information to determine if a project is worth the required investment.
- B. It provides for alternative dispute resolution procedures in event of contract default.
- C. It offers one of several alternative scenarios which assist in performing qualitative risk analysis.
- D. It is used to help a project manager understand the scope of commercial advantages.

Answer: A

NEW QUESTION 25

- (Topic 1)

Which Knowledge Area involves identifying the people, groups, or organizations that may be impacted by or impact a project?

- A. Project Risk Management
- B. Project Human Resource Management
- C. Project Scope Management
- D. Project Stakeholder Management

Answer: D

NEW QUESTION 28

- (Topic 1)

A temporary endeavor that creates a unique product or service is called a:

- A. Project
- B. Plan
- C. Program
- D. Portfolio

Answer: A

NEW QUESTION 31

- (Topic 1)

Risk responses reflect an organization's perceived balance between:

- A. risk taking and risk avoidance.
- B. known risk and unknown risk.
- C. identified risk and analyzed risk.
- D. varying degrees of risk.

Answer: A

NEW QUESTION 35

- (Topic 1)

Which enterprise environmental factors are considered during cost estimating?

- A. Marketplace conditions and commercial databases
- B. Marketplace conditions and company structure
- C. Commercial databases and company structure
- D. Existing human resources and market place conditions

Answer: A

NEW QUESTION 38

- (Topic 1)

Which is an enterprise environmental factor?

- A. Marketplace conditions
- B. Policies and procedures
- C. Project files from previous projects
- D. Lessons learned from previous projects

Answer: A

NEW QUESTION 42

- (Topic 1)

Assigned risk ratings are based upon:

- A. Root cause analysis.
- B. Risk probability and impact assessment.
- C. Expert judgment.
- D. Revised stakeholders' tolerances.

Answer: B

NEW QUESTION 44

- (Topic 1)

In project management, a temporary project can be:

- A. Completed without planning
- B. A routine business process
- C. Long in duration
- D. Ongoing to produce goods

Answer: C

NEW QUESTION 45

- (Topic 1)

An input to Develop Project Charter is a/an:

- A. Business case.
- B. Activity list.
- C. Project management plan.
- D. Cost forecast.

Answer: A

NEW QUESTION 46

- (Topic 1)

The risk shared between the buyer and seller is determined by the:

- A. assumption log.
- B. quality checklist.
- C. risk register.
- D. contract type.

Answer: D

NEW QUESTION 47

- (Topic 1)

A project manager seeking insight on previous stakeholder management plans and their effectiveness should evaluate:

- A. Historical information and the lessons-learned database.
- B. Historical information and the stakeholder register.
- C. Organizational process assets and the lessons-learned database.
- D. Project documents and historical information.

Answer: A

NEW QUESTION 52

- (Topic 1)

Prioritizing risks for further analysis or action by assessing and combining their probability of occurrence and impact takes place in which process?

- A. Monitor and Control Risks
- B. Plan Risk Management
- C. Perform Qualitative Risk Analysis
- D. Perform Quantitative Risk Analysis

Answer: C

NEW QUESTION 54

- (Topic 1)

Which statement is true about the project management body of knowledge?

- A. Recognized by every project manager
- B. Constantly evolving
- C. The sum of all knowledge related to project management
- D. A sum of knowledge that should be applied on every project

Answer: B

NEW QUESTION 55

- (Topic 1)

The Define Scope process is in which of the following Process Groups?

- A. Initiating
- B. Planning
- C. Monitoring and Controlling
- D. Executing

Answer: B

NEW QUESTION 58

- (Topic 1)

Risk exists the moment that a project is:

- A. planned.
- B. conceived.
- C. chartered.
- D. executed.

Answer: B

NEW QUESTION 60

- (Topic 1)

Most experienced project managers know that:

- A. every project requires the use of all processes in the PMBOK® Guide.
- B. there is no single way to manage a project.
- C. project management techniques are risk free.
- D. there is only one way to manage projects successfully.

Answer: B

NEW QUESTION 61

- (Topic 1)

Which type of probability distribution is used to represent uncertain events such as the outcome of a test or a possible scenario in a decision tree?

- A. Uniform
- B. Continuous
- C. Discrete
- D. Linear

Answer: C

NEW QUESTION 64

- (Topic 1)

Which input to Collect Requirements is used to identify stakeholders who can provide information on requirements?

- A. Stakeholder register
- B. Scope management plan
- C. Stakeholder management plan
- D. Project charter

Answer: A

NEW QUESTION 65

- (Topic 1)

What causes replanning of the project scope?

- A. Project document updates
- B. Project scope statement changes
- C. Variance analysis
- D. Change requests

Answer: D

NEW QUESTION 70

- (Topic 1)

What is the definition of Direct and Manage Project Execution?

- A. Integrating all planned activities
- B. Performing the activities included in the plan
- C. Developing and maintaining the plan
- D. Execution of deliverables

Answer: B

NEW QUESTION 71

- (Topic 1)

The probability and impact matrix is primarily used to:

- A. Quantify risk issues for trends during a quality audit.
- B. Develop a risk register for risk planning.
- C. Evaluate each risk's importance and priority during Perform Qualitative Risk Analysis.
- D. Define risk and compare impacts during Perform Quantitative Risk Analysis.

Answer: C

NEW QUESTION 76

- (Topic 1)

The project scope statement and resource calendars are inputs to which Project Time Management process?

- A. Sequence Activities
- B. Estimate Activity Resources
- C. Develop Schedule
- D. Control Schedule

Answer: C

NEW QUESTION 78

- (Topic 1)

Which group creativity technique asks a selected group of experts to answer questionnaires and provide feedback regarding the responses from each round of requirements gathering?

- A. The Delphi technique
- B. Nominal group technique
- C. Affinity diagram
- D. Brainstorming

Answer: A

NEW QUESTION 80

- (Topic 1)

The scope of a project cannot be defined without some basic understanding of how to create the specified:

- A. objectives
- B. schedule
- C. product
- D. approach

Answer: C

NEW QUESTION 81

- (Topic 1)

What is Project Portfolio Management?

- A. Management of a project by dividing the project into more manageable sub-projects.
- B. Management of a project by utilizing a portfolio of general management skills, such as planning, organizing, staffing, executing and controlling.
- C. Management of all projects undertaken by a company.
- D. Management of a collection of projects that are grouped together to facilitate effective management and meet strategic business objectives.

Answer: D

NEW QUESTION 83

- (Topic 1)

Which activity is an input to the select sellers process?

- A. Organizational process assets
- B. Resource availability
- C. Change control process
- D. Team performance assessment

Answer: A

NEW QUESTION 87

- (Topic 1)

Project management processes ensure the:

- A. alignment with organizational strategy
- B. efficient means to achieve the project objectives
- C. performance of the project team
- D. effective flow of the project throughout its life cycle

Answer: D

NEW QUESTION 92

- (Topic 1)

For any given project, the project manager, in collaboration with the project team, is responsible for:

- A. Applying knowledge, skills, and processes uniformly.
- B. Informing the project sponsor about which processes are going to be used.
- C. Tailoring the processes to fit the abilities of the organization.
- D. Determining which particular processes are appropriate.

Answer: D

NEW QUESTION 93

- (Topic 1)

Which basic quality tool explains a change in the dependent variable in relationship to a change observed in the corresponding independent variable?

- A. Cause-and-effect diagram
- B. Histogram
- C. Control chart
- D. Scatter diagram

Answer: D

NEW QUESTION 97

- (Topic 1)

The process of prioritizing risks for further analysis or action is known as:

- A. Plan Risk Management.
- B. Plan Risk Responses.
- C. Perform Qualitative Risk Analysis.
- D. Perform Quantitative Risk Analysis.

Answer: C

NEW QUESTION 101

- (Topic 1)

Which of the following is an output of the Define Activities process?

- A. Activity list
- B. Project plan
- C. Activity duration estimates
- D. Project schedule

Answer: A

NEW QUESTION 105

- (Topic 1)

Projects are undertaken by an organization to support the:

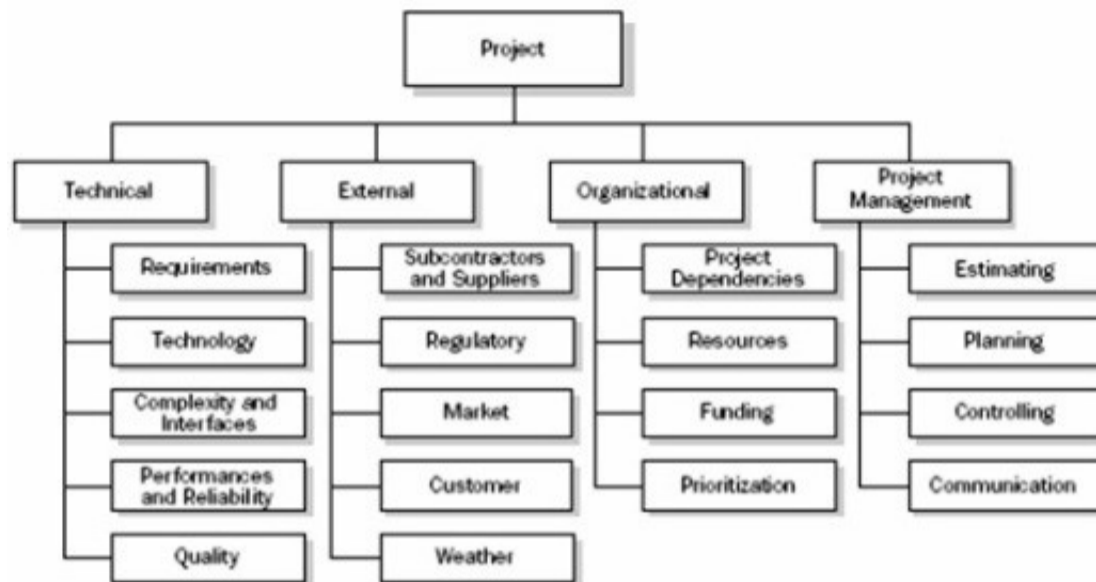
- A. Product performance.
- B. Budget process.
- C. Collective capabilities.
- D. Organizational strategy.

Answer: D

NEW QUESTION 110

- (Topic 1)

The diagram below is an example of a:



- A. Risk breakdown structure (RBS).
- B. Project team.
- C. SWOT Analysis.
- D. Work breakdown structure (WBS).

Answer: A

NEW QUESTION 111

- (Topic 1)

Which tool or technique is used in the Develop Project Management Plan process?

- A. Pareto diagram
- B. Performance reporting
- C. SWOT analysis
- D. Expert judgment

Answer: D

NEW QUESTION 115

- (Topic 1)

Which of the following includes how requirements activities will be planned, tracked, and reported?

- A. Configuration management plan
- B. Scope baseline
- C. Requirements management plan
- D. Schedule baseline

Answer: C

NEW QUESTION 119

- (Topic 1)

An input required in Define Scope is an organizational:

- A. structure.
- B. process asset.
- C. matrix.
- D. breakdown structure.

Answer: B

NEW QUESTION 124

- (Topic 1)

A complete set of concepts, terms, and activities that make up an area of specialization is known as:

- A. a Knowledge Area
- B. a Process Group
- C. program management
- D. portfolio management

Answer: A

NEW QUESTION 128

- (Topic 1)

As part of a mid-project evaluation, the project sponsor has asked for a forecast of the total project cost. What should be used to calculate the forecast?

- A. BAC
- B. EAC
- C. ETC
- D. WBS

Answer: B

NEW QUESTION 132

- (Topic 1)

What are the five Project Management Process Groups?

- A. Initiating, Planning, Executing, Monitoring and Controlling, and Closing
- B. Introduction, Planning, Executing, Monitoring and Controlling, and Closing
- C. Initiating, Planning, Executing, Monitoring and Controlling, and Ending
- D. Introduction, Planning, Implementation, Monitoring and Controlling, and Closure

Answer: A

NEW QUESTION 136

- (Topic 1)

Who MUST know when a risk event occurs so that a response can be implemented?

- A. Customers
- B. Project sponsors
- C. Project management team
- D. Insurance claims department

Answer: C

NEW QUESTION 141

- (Topic 1)

In the Initiating Process Group, at what point does the project become officially authorized?

- A. When the project charter is signed
- B. When all the stakeholders agree on the scope of the project
- C. When the project manager is appointed
- D. When the necessary finance or funding is obtained

Answer: A

NEW QUESTION 142

- (Topic 1)

Which cost is associated with nonconformance?

- A. Liabilities
- B. Inspections
- C. Training
- D. Equipment

Answer: A

NEW QUESTION 147

- (Topic 1)

Which input to the Identify Stakeholders process provides information about internal or external parties related to the project?

- A. Procurement documents
- B. Communications plan
- C. Project charter
- D. Stakeholder register

Answer: C

NEW QUESTION 151

- (Topic 1)

Stakeholder satisfaction should be managed as a key project:

- A. Benefit
- B. Initiative
- C. Objective
- D. Process

Answer: C

NEW QUESTION 154

- (Topic 2)

An input to the Identify Risks process is the:

- A. Risk register.
- B. Risk probability and impact assessment.
- C. Communications management plan.
- D. Risk management plan.

Answer: D

NEW QUESTION 159

- (Topic 2)

Which tools or techniques will the project manager use for developing the project team?

- A. Negotiation
- B. Roles and responsibilities
- C. Recognition and rewards
- D. Prizing and promoting

Answer: C

NEW QUESTION 162

- (Topic 2)

One of the key benefits of the Plan Human Resource Management process is that it:

- A. outlines team selection guidelines and team member responsibilities.
- B. establishes project roles and responsibilities.
- C. improves teamwork, interpersonal skills, and competencies.
- D. provides an accurate appraisal of team member performance.

Answer: B

NEW QUESTION 167

- (Topic 2)

Which process involves defining, preparing, and coordinating all subsidiary plans and integrating them into a comprehensive plan?

- A. Direct and Manage Project Work
- B. Develop Project Management Plan
- C. Plan Quality Management
- D. Monitor and Control Project Work

Answer: B

NEW QUESTION 170

- (Topic 2)

In a project, total float measures the:

- A. Ability to shuffle schedule activities to lessen the duration of the project.
- B. Amount of time an activity can be extended or delayed without altering the project finish date.
- C. Cost expended to restore order to the project schedule after crashing the schedule.
- D. Estimate of the total resources needed for the project after performing a forward pass.

Answer: B

NEW QUESTION 175

- (Topic 2)

The definition of when and how often the risk management processes will be performed throughout the project life cycle is included in which risk management plan component?

- A. Timing
- B. Methodology
- C. Risk categories
- D. Budgeting

Answer: A

NEW QUESTION 180

- (Topic 2)

An input to the Plan Cost Management process is:

- A. Cost estimates.
- B. Resource calendars,
- C. The project charter,
- D. The risk register.

Answer: C

NEW QUESTION 184

- (Topic 2)

Which process involves documenting the actions necessary to define, prepare, integrate, and coordinate all subsidiary plans?

- A. Collect Requirements
- B. Direct and Manage Project Execution
- C. Monitor and Control Project Work
- D. Develop Project Management Plan

Answer: D

NEW QUESTION 185

- (Topic 2)

Which of the following is a tool and technique for Estimate Activity Durations?

- A. Parametric estimating
- B. Monte Carlo analysis
- C. Alternatives analysis
- D. Bottom-up estimating

Answer: A

NEW QUESTION 186

- (Topic 2)

What is an objective of the Develop Project Team process?

- A. Feelings of trust and improved cohesiveness
- B. Ground rules for interaction
- C. Enhanced resource availability
- D. Functional managers becoming more involved

Answer: A

NEW QUESTION 191

- (Topic 2)

A project manager is appointed full-time to a project and is given full-time administrative staff and full-time project team members. This situation describes which type of organizational structure?

- A. Projectized
- B. Weak matrix
- C. Functional
- D. Balanced matrix

Answer: A

NEW QUESTION 192

- (Topic 2)

Which tool or technique is an examination of industry and specific vendor capabilities?

- A. Independent estimates
- B. Market research
- C. Analytical techniques
- D. Bidder conferences

Answer: B

NEW QUESTION 194

- (Topic 2)

Which of the following is used to illustrate the connections between work packages or activities and project team members?

- A. Hierarchical-type charts (HTC)
- B. Organizational breakdown structure (OBS)
- C. Work breakdown structure (WBS)
- D. Responsibility assignment matrix (RAM)

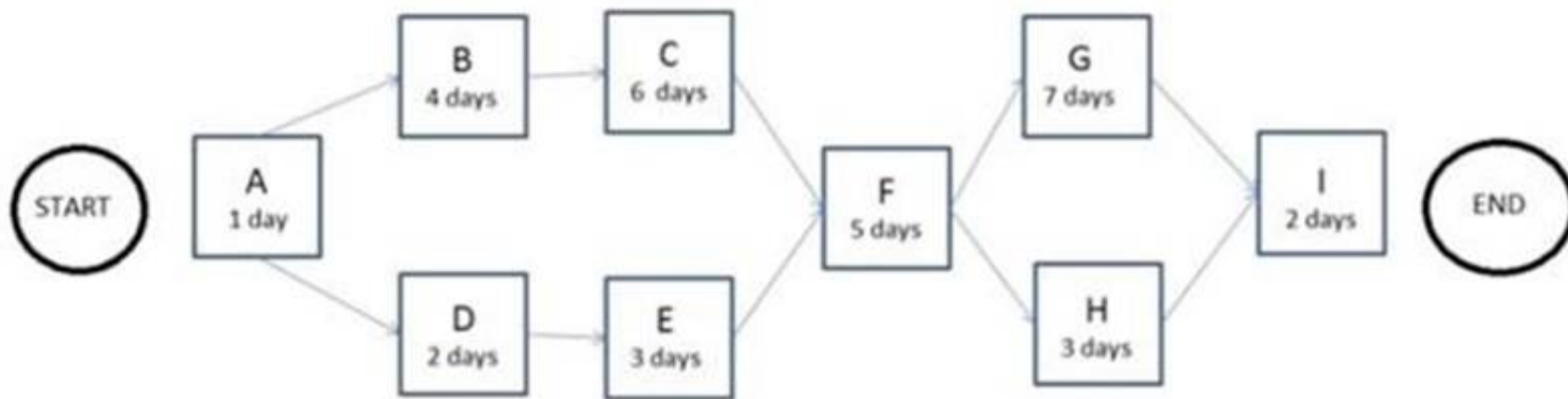
Answer:

D

NEW QUESTION 197

- (Topic 2)

The following is a network diagram for a project.



The free float for Activity E is how many days?

- A. 2
- B. 3
- C. 5
- D. 8

Answer: C

NEW QUESTION 199

- (Topic 2)

Which quality planning tools and techniques are used to visually identify logical groupings based on natural relationships?

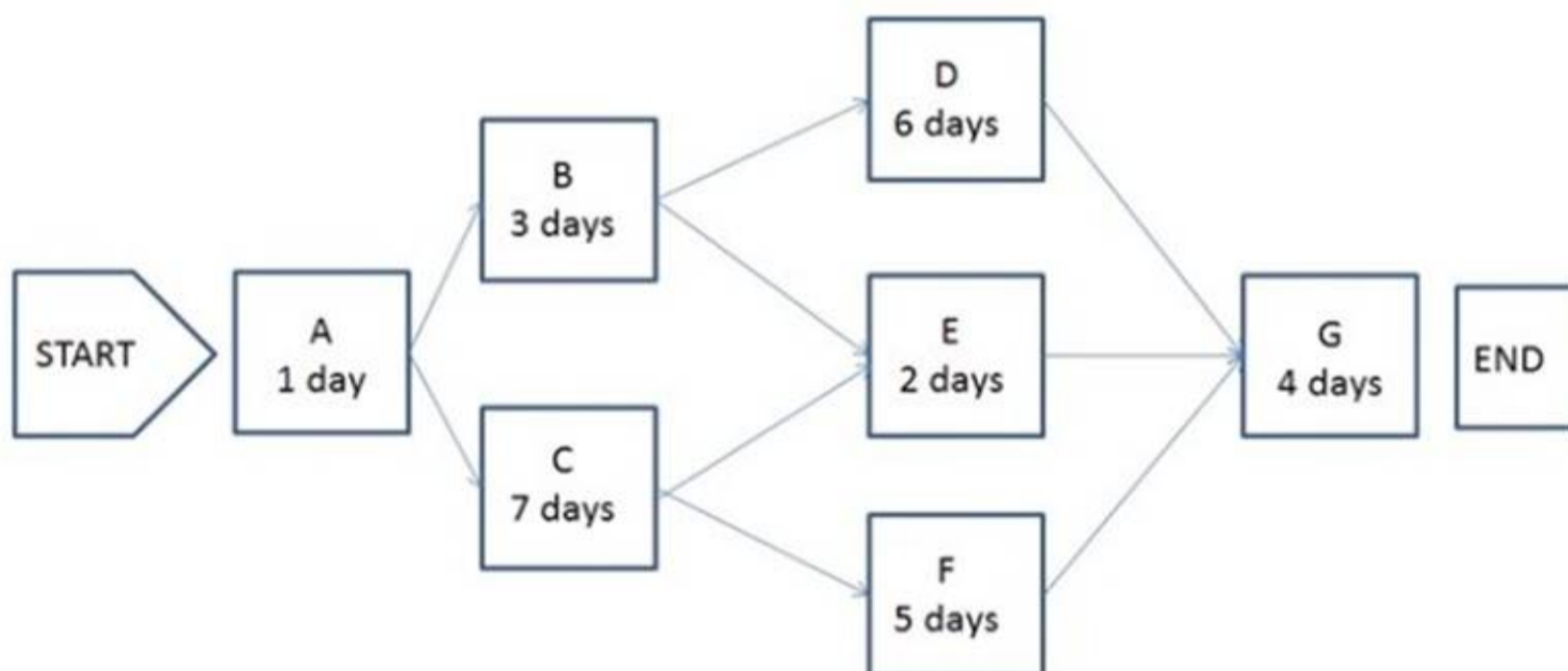
- A. Force field diagrams
- B. Cause-and-effect diagrams
- C. Affinity diagrams
- D. Nominal group techniques

Answer: C

NEW QUESTION 201

- (Topic 2)

The following is a network diagram for a project.



The critical path for the project is how many days in duration?

- A. 10
- B. 12
- C. 14
- D. 17

Answer: D

NEW QUESTION 205

- (Topic 2)

During what process is the quality policy determined?

- A. Initiating
- B. Executing
- C. Planning
- D. Controlling

Answer: C

NEW QUESTION 206

- (Topic 2)

Which of the following is contained within the communications management plan?

- A. An organizational chart
- B. Glossary of common terminology
- C. Organizational process assets
- D. Enterprise environmental factors

Answer: B

NEW QUESTION 211

- (Topic 2)

Quality metrics are an output of which process?

- A. Plan Quality
- B. Perform Quality Control
- C. Perform Quality Assurance
- D. Perform Qualitative Risk Analysis

Answer: A

NEW QUESTION 213

- (Topic 2)

Which is used to solicit proposals from prospective sellers?

- A. Procurement statement of work
- B. Resource calendars
- C. Procurement document
- D. Independent estimates

Answer: C

NEW QUESTION 214

- (Topic 2)

At which stage of the project should certain factors such as the unavailability of human resources due to constraint be considered?

- A. Initiation
- B. Execution
- C. Planning
- D. Monitoring and Controlling

Answer: C

NEW QUESTION 218

- (Topic 2)

Which piece of information is part of the WBS Dictionary?

- A. Responsible organization
- B. Change requests
- C. Validated deliverables
- D. Organizational process assets

Answer: A

NEW QUESTION 222

- (Topic 2)

Which tool is used to develop technical details within the project management plan?

- A. Expert Judgment
- B. Project Management Methodology
- C. Project Management Information
- D. Project Selection Methods

Answer: A

NEW QUESTION 224

- (Topic 2)

Project Scope Management is primarily concerned with:

- A. Developing a detailed description of the project and product.
- B. Determining how requirements will be analyzed, documented, and managed.
- C. Defining and controlling what is and is not included in the project.

D. Formalizing acceptance of the completed project deliverables.

Answer: C

NEW QUESTION 228

- (Topic 2)

The milestone list is an input to which process from the Planning Process Group?

- A. Define Activities
- B. Estimate Activity Durations
- C. Estimate Activity Resources
- D. Sequence Activities

Answer: D

NEW QUESTION 232

- (Topic 2)

The staffing management plan is part of the:

- A. organizational process assets.
- B. resource calendar.
- C. human resource plan.
- D. Develop Project Team process.

Answer: C

NEW QUESTION 235

- (Topic 2)

An example of a group decision-making technique is:

- A. Nominal group technique.
- B. Majority.
- C. Affinity diagram.
- D. Multi-criteria decision analysis.

Answer: B

NEW QUESTION 236

- (Topic 2)

A contract management plan is a subsidiary of what other type of plan?

- A. Resource plan
- B. Project management plan
- C. Cost control plan
- D. Expected monetary value plan

Answer: B

NEW QUESTION 238

- (Topic 2)

Which quality tool may prove useful in understanding and estimating the cost of quality in a process?

- A. Checksheets
- B. Histograms
- C. Flowcharts
- D. Control charts

Answer: C

NEW QUESTION 239

- (Topic 2)

Taking out insurance in relation to risk management is called what?

- A. Transference
- B. Avoidance
- C. Exploring
- D. Mitigation

Answer: A

NEW QUESTION 241

- (Topic 2)

The progressive detailing of the project management plan is called:

- A. expert judgment.

- B. rolling wave planning.
- C. work performance information.
- D. specification.

Answer: B

NEW QUESTION 242

- (Topic 2)

The primary benefit of the Plan Schedule Management process is that it:

- A. provides guidance to identify time or schedule challenges within the project.
- B. tightly links processes to create a seamless project schedule.
- C. guides how the project schedule will be managed throughout the project.
- D. creates an overview of all activities broken down into manageable subsections.

Answer: C

NEW QUESTION 247

- (Topic 2)

Which Plan Schedule Management tool or technique may involve choosing strategic options to estimate and schedule the project?

- A. Facilitation techniques
- B. Expert judgment
- C. Analytical techniques
- D. Variance analysis

Answer: C

NEW QUESTION 250

- (Topic 2)

Progressively elaborating high-level information into detailed plans is performed by the:

- A. project management office
- B. portfolio manager
- C. program manager
- D. project manager

Answer: D

NEW QUESTION 255

- (Topic 2)

The organizational process assets that are of particular importance to Plan Communications are:

- A. Formal plans and procedures
- B. Lessons learned and historical information
- C. Guidelines and knowledge bases
- D. Stakeholder positions and their influence

Answer: B

NEW QUESTION 256

- (Topic 2)

Which tool or technique of Plan Quality involves comparing actual or planned practices to those of other projects to generate ideas for improvement and provide a basis by which to measure performance?

- A. Histogram
- B. Quality audits
- C. Benchmarking
- D. Performance measurement analysis

Answer: C

NEW QUESTION 260

- (Topic 2)

Which tool or technique is required in order to determine the project budget?

- A. Cost of quality
- B. Historical relationships
- C. Project management software
- D. Forecasting

Answer: B

NEW QUESTION 262

- (Topic 2)

A strengths, weaknesses, opportunities, and threats (SWOT) analysis is a tool or technique used in which process?

- A. Identify Risks
- B. Control Risks
- C. Perform Quantitative Risk Analysis
- D. Perform Qualitative Risk Analysis

Answer: A

NEW QUESTION 266

- (Topic 2)

Which tool or technique is used in Manage Stakeholder Expectations?

- A. Stakeholder management strategy
- B. Communication methods
- C. Issue log
- D. Change requests

Answer: B

NEW QUESTION 268

- (Topic 2)

Units of measure, level of precision, level of accuracy, control thresholds, and rules of performance measurement are examples of items that are established in the:

- A. Cost management plan.
- B. Work performance information.
- C. Quality management plan.
- D. Work breakdown structure.

Answer: A

NEW QUESTION 272

- (Topic 2)

Which action should a project manager take to ensure that the project management plan is effective and current?

- A. Conduct periodic project performance reviews.
- B. Identify quality project standards.
- C. Follow ISO 9000 quality standards.
- D. Complete the quality control checklist.

Answer: A

NEW QUESTION 274

- (Topic 2)

Which is an example of Administer Procurements?

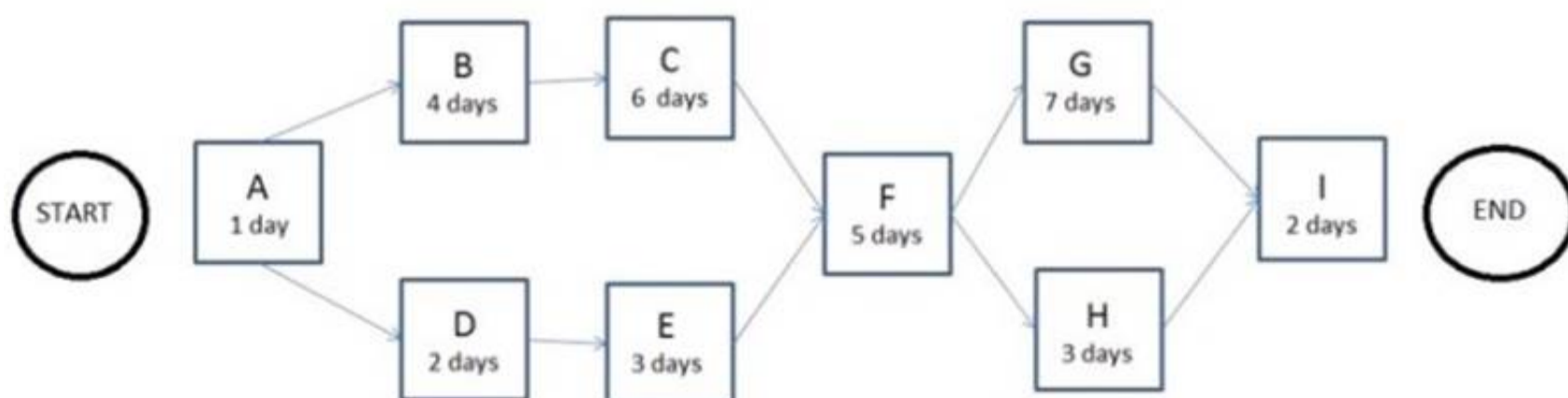
- A. Negotiating the contract
- B. Authorizing contractor work
- C. Developing the statement of work
- D. Establishing evaluation criteria

Answer: B

NEW QUESTION 277

- (Topic 2)

The following is a network diagram for a project.



The free float for Activity H is how many days?

- A. 4
- B. 5
- C. 10
- D. 11

Answer: A

NEW QUESTION 281

- (Topic 2)

Which can be used to determine whether a process is stable or has predictable performance?

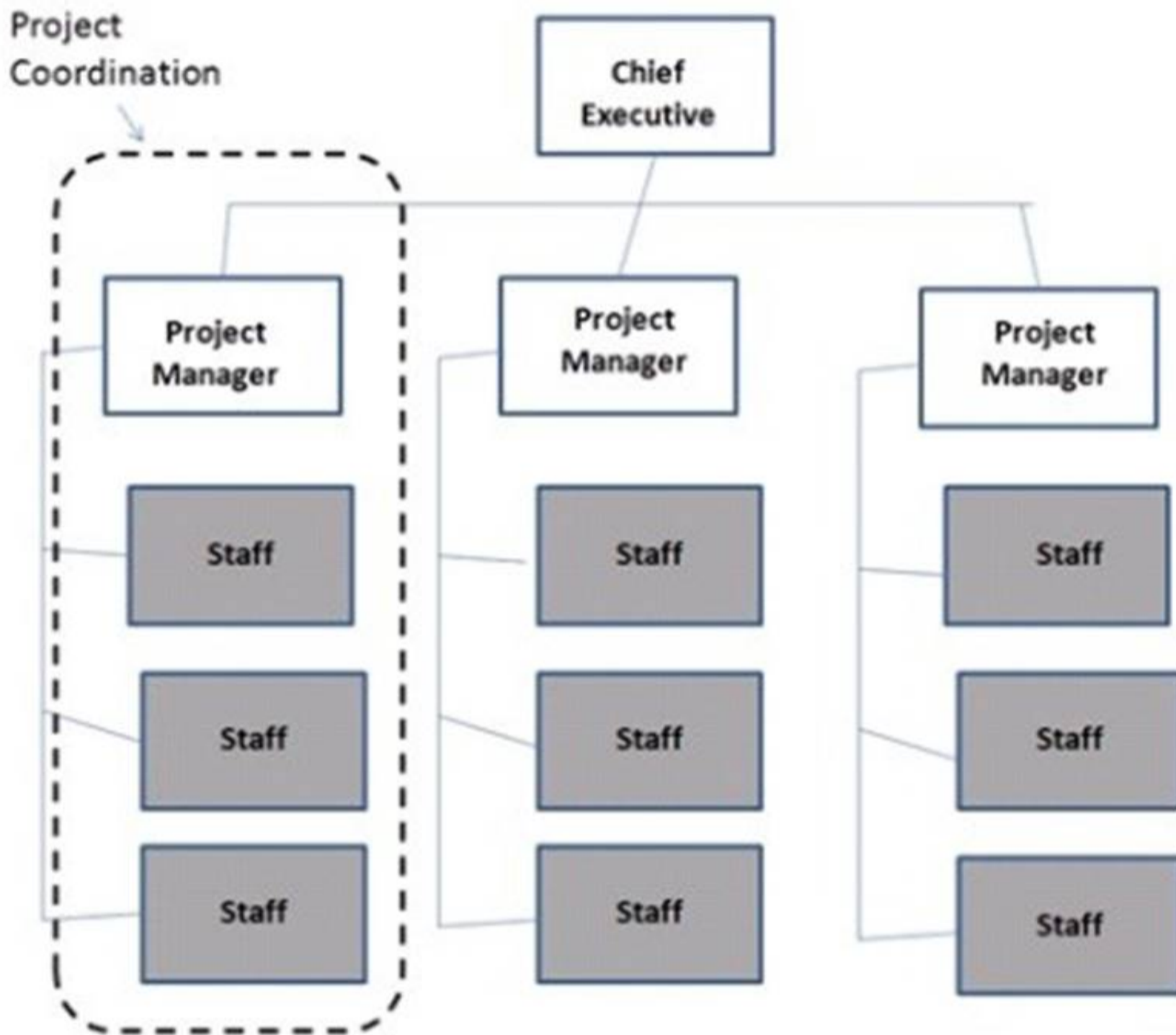
- A. Matrix diagram
- B. Histogram
- C. Control chart
- D. Flowchart

Answer: C

NEW QUESTION 286

- (Topic 2)

Which type of organizational structure is displayed in the diagram provided?



- A. Balanced matrix
- B. Projectized
- C. Strong matrix
- D. Functional

Answer: B

NEW QUESTION 290

- (Topic 2)

What defines the portion of work included in a contract for items being purchased or acquired?

- A. Procurement management plan
- B. Evaluation criteria
- C. Work Breakdown Structure (WBS)
- D. Contract Statement of Work (SOW)

Answer: D

NEW QUESTION 293

- (Topic 2)

Inputs to the Plan Schedule Management process include:

- A. Organizational process assets and the project charter,
- B. Enterprise environmental factors and schedule tools.
- C. Time tables and Pareto diagrams.
- D. Activity attributes and resource calendars.

Answer: A

NEW QUESTION 294

- (Topic 2)

For a project to be successful, the project team must do which of the following?

- A. Complete the project in sequential phases.
- B. Overlook minor stakeholders.
- C. Produce ongoing repetitive products, services, or results.
- D. Select the appropriate processes required to meet the project objective.

Answer: D

NEW QUESTION 298

- (Topic 2)

Using values such as scope, cost, budget, and duration or measures of scale such as size, weight, and complexity from a previous similar project as the basis for estimating the same parameter or measurement for a current project describes which type of estimating?

- A. Bottom-up
- B. Parametric
- C. Analogous
- D. Three-point

Answer: C

NEW QUESTION 300

- (Topic 2)

Create WBS is part of which of the following Knowledge Areas?

- A. Project Integration Management
- B. Project Scope Management
- C. Project Time Management
- D. Project Cost Management

Answer: B

NEW QUESTION 302

- (Topic 2)

Portfolio Management is management of:

- A. a project by dividing the project into more manageable sub-projects.
- B. a project by utilizing a portfolio of general management skills such as planning, organizing, staffing, executing, and controlling.
- C. all projects undertaken by a company.
- D. a collection of projects that are grouped together to facilitate effective management and meet strategic business objectives.

Answer: D

NEW QUESTION 305

- (Topic 2)

Which Manage Communications tool or technique focuses on identifying and managing barriers?

- A. Communication methods
- B. Information technology
- C. Communication models
- D. Information management systems

Answer: C

NEW QUESTION 307

- (Topic 2)

Which process determines the risks that may affect the project and documents their characteristics?

- A. Control Risks
- B. Plan Risk Management
- C. Plan Risk Responses
- D. Identify Risks

Answer:

D

NEW QUESTION 312

- (Topic 2)

Which of the following are outputs of Develop Project Team?

- A. Human resources plan changes and project staff assignment updates
- B. Project management plan updates and enterprise environmental factor updates
- C. Resource calendars and project management plan updates
- D. Team performance assessments and enterprise environmental factor updates

Answer: D

NEW QUESTION 315

- (Topic 2)

Organizations manage portfolios based on which of the following types of plans?

- A. Strategic
- B. Project
- C. Program
- D. Operational

Answer: A

NEW QUESTION 319

- (Topic 2)

Which stakeholder classification model groups stakeholders based on their level of authority and their active involvement in the project?

- A. Power/influence grid
- B. Power/interest grid
- C. Influence/impact grid
- D. Salience model

Answer: A

NEW QUESTION 320

- (Topic 2)

The Create WBS process is in which of the following Project Management Process Groups?

- A. Planning
- B. Monitoring and Controlling
- C. Executing
- D. Initiating

Answer: A

NEW QUESTION 324

- (Topic 2)

Which Project Management Process Group includes Collect Requirements, Define Activities, Sequence Activities, Perform Qualitative Risk Analysis, and Perform Quantitative Risk Analysis?

- A. Initiating
- B. Monitoring and Controlling
- C. Planning
- D. Closing

Answer: C

NEW QUESTION 327

- (Topic 2)

The process of identifying and documenting the specific actions to be performed to produce the project deliverables is known as:

- A. Define Activities.
- B. Sequence Activities.
- C. Define Scope.
- D. Control Schedule.

Answer: A

NEW QUESTION 332

- (Topic 2)

Requirements documentation will typically contain at least:

- A. Stakeholder requirements, staffing requirements, and transition requirements.
- B. Business requirements, the stakeholder register, and functional requirements.
- C. Stakeholder impact, budget requirements, and communications requirements.

D. Business objectives, stakeholder impact, and functional requirements.

Answer: D

NEW QUESTION 337

- (Topic 2)

Which Define Activities tool or technique is used for dividing and subdividing the project scope and project deliverables into smaller, more manageable parts?

- A. Decomposition
- B. Inspection
- C. Project analysis
- D. Document analysis

Answer: A

NEW QUESTION 342

- (Topic 2)

The process of identifying the stakeholders' information needs is completed during:

- A. Plan Communications.
- B. Manage Stakeholder Expectations.
- C. Stakeholder Analysis.
- D. Identify Stakeholders.

Answer: A

NEW QUESTION 344

- (Topic 3)

Which of the following processes are within the Initiating Process Group?

- A. Develop Project Management Plan and Identify Stakeholders
- B. Develop Project Management Plan and Plan Communications
- C. Develop Project Charter and Identify Stakeholders
- D. Develop Project Charter and Develop Project Scope Statement

Answer: C

NEW QUESTION 347

- (Topic 3)

Which of the following are examples of interactive communication?

- A. Intranet sites
- B. Voice mails
- C. Video conferences
- D. Press releases

Answer: C

NEW QUESTION 349

- (Topic 3)

Which of the following processes is necessary to ensure that the project employs all processes needed to meet its requirements?

- A. Perform Quality Control
- B. Quality Policy
- C. Perform Quality Assurance
- D. Quality Planning

Answer: C

NEW QUESTION 353

- (Topic 3)

Which tool and technique identifies inefficient and ineffective policies, processes, and procedures?

- A. Scope audits
- B. Scope reviews
- C. Quality audits
- D. Control chart

Answer: C

NEW QUESTION 355

- (Topic 3)

An imposed date for completion of the project by the customer is an example of a project:

- A. deliverable

- B. assumption
- C. constraint
- D. exclusion

Answer: C

NEW QUESTION 356

- (Topic 3)

Which of the following is a tool and technique used in all processes within Project Integration Management?

- A. Records management system
- B. Expert judgment
- C. Project management software
- D. Issue log

Answer: B

NEW QUESTION 361

- (Topic 3)

A large portion of a projects budget is typically expended on the processes in which Process Group?

- A. Executing
- B. Planning
- C. Monitoring and Controlling
- D. Closing

Answer: A

NEW QUESTION 362

- (Topic 3)

What is the estimate at completion (EAC) if the budget at completion (BAC) is \$100, the actual cost (AC) is \$50, and the earned value (EV) is \$25?

- A. \$50
- B. \$100
- C. \$125
- D. \$200

Answer: D

Explanation:

$EAC = BAC / CPI$ and $CPI = EV / AC$ $CPI = EV / AC = 25 / 50 = 0.5$

$EAC = BAC / CPI = 100 / 0.5 = \200

NEW QUESTION 363

- (Topic 3)

Which of the following correctly lists the configuration management activities included in the Integrated Change Control process?

- A. Configuration definition, configuration status accounting, configuration monitoring and control
- B. Configuration identification, configuration status accounting, configuration verification and audit
- C. Configuration identification, configuration status reporting, configuration verification and audit
- D. Configuration definition, configuration status reporting, configuration monitoring and Control

Answer: B

NEW QUESTION 368

- (Topic 3)

The process of monitoring the status of the project to update project progress and manage changes to the schedule baseline is:

- A. Control Schedule.
- B. Quality Control.
- C. Perform Integrated Change Control.
- D. Develop Schedule.

Answer: A

NEW QUESTION 372

- (Topic 3)

Which of the following is an example of push communication?

- A. Intranet sites
- B. Video conferencing
- C. Knowledge repositories
- D. Press releases

Answer: D

NEW QUESTION 373

- (Topic 3)

A project manager should communicate to stakeholders about resolved project issues by updating the:

- A. project records
- B. project reports
- C. stakeholder notifications
- D. stakeholder register

Answer: C

NEW QUESTION 375

- (Topic 3)

Which type of management focuses on ensuring that projects and programs are reviewed to prioritize resource allocation?

- A. Project
- B. Functional
- C. Program
- D. Portfolio

Answer: D

NEW QUESTION 378

- (Topic 3)

What is a tool and technique used in the Develop Project Management Plan process?

- A. Project management information system (PMIS)
- B. Project charter
- C. Quality assurance
- D. Expert judgment

Answer: D

NEW QUESTION 379

- (Topic 3)

Impacts to other organizational areas, levels of service, and acceptance criteria are typical components of which document?

- A. Business case
- B. Work breakdown structure
- C. Requirements documentation
- D. Risk register

Answer: C

NEW QUESTION 384

- (Topic 3)

What are the formal and informal policies, procedures, and guidelines that could impact how the project's scope is managed?

- A. Organizational process assets
- B. Enterprise environmental factors
- C. Project management processes
- D. Project scope management plan

Answer: A

NEW QUESTION 389

- (Topic 3)

An input to the Perform Integrated Change Control process is:

- A. expert judgment
- B. seller proposals
- C. the project charter
- D. the project management plan

Answer: D

NEW QUESTION 393

- (Topic 3)

How is scheduled variance calculated using the earned value technique?

- A. EV less AC
- B. AC less PV
- C. EV less PV
- D. AC less EV

Answer:

C

NEW QUESTION 395

- (Topic 3)

Which technique is used in Perform Quantitative Risk Analysis?

- A. Sensitivity analysis
- B. Probability and impact matrix
- C. Risk data quality assessment
- D. Risk categorization

Answer: A

NEW QUESTION 397

- (Topic 3)

Which type of elaboration allows a project management team to manage at a greater level of detail as the project evolves?

- A. Cyclic
- B. Progressive
- C. Repetitive
- D. Iterative

Answer: B

NEW QUESTION 399

- (Topic 3)

One of the tools and techniques of the Manage Project Team process is:

- A. organization charts.
- B. ground rules.
- C. organizational theory,
- D. conflict management.

Answer: D

NEW QUESTION 404

- (Topic 3)

While implementing an approved change, a critical defect was introduced. Removing the defect will delay the product delivery. What is the MOST appropriate approach to managing this situation?

- A. Utilize the change control process.
- B. Crash the schedule to fix the defect.
- C. Leave the defect in and work around it.
- D. Fast-track the remaining development.

Answer: A

NEW QUESTION 408

- (Topic 3)

A purchase order for a specified item to be delivered by a specified date for a specified price is the simplest form of what type of contract?

- A. Cost-reimbursable
- B. Time and material
- C. Fixed price or lump-sum
- D. Cost-plus-fixed-fee

Answer: C

NEW QUESTION 410

- (Topic 3)

Which Process Group typically consumes the bulk of a project's budget?

- A. Monitoring and Controlling
- B. Executing
- C. Planning
- D. Initiating

Answer: B

NEW QUESTION 412

- (Topic 3)

When would resource leveling be applied to a schedule model?

- A. Before constraints have been identified
- B. Before it has been analyzed by the critical path method
- C. After it has been analyzed by the critical path method

D. After critical activities have been removed from the critical path

Answer: C

NEW QUESTION 414

- (Topic 3)

Typical outcomes of a project include:

- A. Products, services, and improvements.
- B. Products, programs, and services.
- C. Improvements, portfolios, and services.
- D. Improvements, processes, and products.

Answer: A

NEW QUESTION 415

- (Topic 3)

A project charter is an output of which Process Group?

- A. Executing
- B. Planning
- C. Initiating
- D. Closing

Answer: C

NEW QUESTION 417

- (Topic 3)

A project management office manages a number of aspects including the:

- A. Project scope, schedule, cost, and quality of the products of the work packages.
- B. Central coordination of communication management across projects.
- C. Assignment of project resources to best meet project objectives.
- D. Overall risk, overall opportunity, and interdependencies among projects at the enterprise level.

Answer: D

NEW QUESTION 422

- (Topic 3)

Based on the following metrics: EV=\$20,000, AC=\$22,000, and PV=\$28,000, what is the project CV?

- A. -8000
- B. -2000
- C. 2000
- D. 8000

Answer: B

NEW QUESTION 424

- (Topic 3)

Which of the following is a schematic display of the project's schedule activities and the logical relationships among them?

- A. Gantt chart
- B. Project schedule network diagram
- C. Project milestone list
- D. Activity list

Answer: B

NEW QUESTION 428

- (Topic 3)

In which domain of project management would a Pareto chart provide useful information?

- A. Project Scope Management
- B. Project Time Management
- C. Project Communications Management
- D. Project Quality Management

Answer: D

NEW QUESTION 430

- (Topic 3)

Which type of project management office (PMO) supplies templates, best practices, and training to project teams?

- A. Supportive

- B. Directive
- C. Controlling
- D. Instructive

Answer: A

NEW QUESTION 434

- (Topic 3)

Which of the following is an input of the Define Activities process?

- A. Scope baseline
- B. Milestone list
- C. Resource calendars
- D. Activity list

Answer: A

NEW QUESTION 438

- (Topic 3)

Which tool or technique is used in Close Procurements?

- A. Contract plan
- B. Procurement plan
- C. Closure process
- D. Procurement audits

Answer: D

NEW QUESTION 442

- (Topic 3)

Organizational planning impacts projects by means of project prioritization based on risk, funding, and an organizations:

- A. Budget plan
- B. Resource plan
- C. Scope plan
- D. Strategic plan

Answer: D

NEW QUESTION 443

- (Topic 3)

The project has a current cost performance index of 0.80. Assuming this performance wi continue, the new estimate at completion is \$1000. What was the original budget at completion for the project?

- A. \$800
- B. \$1000
- C. \$1250
- D. \$1800

Answer: A

NEW QUESTION 445

- (Topic 3)

Which document describes the procurement item in sufficient detail to allow prospective sellers to determine if they are capable of providing the products, services, or results?

- A. Procurement management plan
- B. Procurement statement of work
- C. Request for proposal
- D. Request for quote

Answer: B

NEW QUESTION 447

- (Topic 3)

The project manager needs to review the templates in use. The templates are part of the:

- A. Enterprise environmental factors.
- B. Historical information,
- C. Organizational process assets.
- D. Corporate knowledge base.

Answer: C

NEW QUESTION 448

- (Topic 3)

Project Management Process Groups are linked by:

- A. the outputs they produce
- B. discrete or one-time events
- C. the project management plan
- D. common tools and techniques

Answer: A

NEW QUESTION 453

- (Topic 3)

Which of the following is an input into the Develop Project Team process?

- A. Enterprise environmental factors
- B. Organizational process assets
- C. Project staff assignments
- D. Performance reports

Answer: C

NEW QUESTION 457

- (Topic 3)

Which of the following is a tool or technique for the Plan Procurements process?

- A. Bidder conferences
- B. Proposal evaluation techniques
- C. Contract types
- D. Contract change control systems

Answer: C

NEW QUESTION 460

- (Topic 3)

Which of the following factors is lowest at the start of the project?

- A. Cost of changes
- B. Stakeholder influences
- C. Risk
- D. Uncertainty

Answer: A

NEW QUESTION 465

- (Topic 3)

Which tool or technique measures performance of the project as it moves from project initiation through project closure?

- A. Resource leveling
- B. Parametric measuring
- C. Pareto chart
- D. Earned value

Answer: D

NEW QUESTION 470

- (Topic 3)

Overlooking negative stakeholders can result in a/an:

- A. decreased likelihood of conflicting interests between stakeholders.
- B. decreased likelihood of the projects progress being impeded.
- C. increased likelihood of project failure.
- D. increased likelihood of project success.

Answer: C

NEW QUESTION 475

- (Topic 3)

Which of the following is an input to the Plan Risk Responses process?

- A. Risk urgency assessment
- B. Organizational process assets
- C. Risk register
- D. Schedule management plan

Answer: C

NEW QUESTION 479

- (Topic 3)

Which of the following is an output of the Conduct Procurements process?

- A. Project statement of work
- B. Selected sellers
- C. Risk register updates
- D. Teaming agreements

Answer: B

NEW QUESTION 484

- (Topic 3)

Another name for an Ishikawa diagram is:

- A. cause and effect diagram.
- B. control chart.
- C. flowchart.
- D. histogram.

Answer: A

NEW QUESTION 488

- (Topic 3)

Outputs from constituent processes might be used as:

- A. Inputs to other processes.
- B. Proof of process completion.
- C. Identification of project tasks.
- D. Indicators to eliminate project redundancies.

Answer: A

NEW QUESTION 493

- (Topic 3)

As the project progresses, which of the following is routinely collected from the project activities?

- A. Communication management activities
- B. Change requests
- C. Configuration verification and audit
- D. Work performance information

Answer: D

NEW QUESTION 496

- (Topic 3)

Information distribution involves making needed information available to project stakeholders in a timely manner. What is an output from information distribution?

- A. Earned value analysis
- B. Trend analysis
- C. Project records
- D. Performance reviews

Answer: C

NEW QUESTION 500

- (Topic 3)

The Perform Quality Assurance process occurs in which Process Group?

- A. Executing
- B. Monitoring and Controlling
- C. Initiating
- D. Planning

Answer: A

NEW QUESTION 503

- (Topic 3)

The traditional organization chart structure that can be used to show positions and relationships in a graphic top-down format is called a:

- A. Responsible, accountable, consult, and inform (RACI) chart.
- B. Matrix-based chart.
- C. Human resource chart.
- D. Hierarchical-type chart.

Answer: D

NEW QUESTION 505

- (Topic 3)

An input to the Identify Stakeholders process is:

- A. The project management plan.
- B. The stakeholder register.
- C. Procurement documents.
- D. Stakeholder analysis.

Answer: C

NEW QUESTION 508

- (Topic 3)

Which of the following techniques is used during Control Scope?

- A. Cost-benefit analysis
- B. Variance analysis
- C. Reserve analysis
- D. Stakeholder analysis

Answer: B

NEW QUESTION 509

- (Topic 3)

Resource calendars are included in the:

- A. staffing management plan.
- B. work breakdown structure (WBS).
- C. project communications plan.
- D. project charter.

Answer: A

NEW QUESTION 510

- (Topic 3)

Which of the following strategic considerations often results in project authorization?

- A. Customer requests and/or issue resolution
- B. Stakeholder expectations and/or strategic opportunity (business need)
- C. Technological advancement and/or senior executive request
- D. Market demand and/or legal requirements

Answer: D

NEW QUESTION 515

- (Topic 3)

Which cost estimate technique includes contingencies to account for cost uncertainty?

- A. Vendor bid analysis
- B. Three-point estimates
- C. Parametric estimating
- D. Reserve analysis

Answer: D

NEW QUESTION 519

- (Topic 3)

Which process involves identifying and documenting the logical relationships between project activities?

- A. Develop Schedule
- B. Sequence Activities
- C. Create WBS
- D. Applying leads and lags

Answer: B

NEW QUESTION 521

- (Topic 3)

A tool or technique in Perform Quality Control that a project manager would use is:

- A. quality audits.
- B. process analysis.
- C. benchmarking.
- D. inspection.

Answer:

D

NEW QUESTION 526

- (Topic 3)

Your project has an EV of 100 work-days, an AC of 120 work-days, and a PV of 80 work days. What should be your concern?

- A. There is a cost under run.
- B. There is a cost overrun.
- C. May not meet deadline.
- D. The project is 20 days behind schedule.

Answer: B

NEW QUESTION 530

- (Topic 3)

Which of the following is an output of Direct and Manage Project Execution?

- A. Project management plan
- B. Change request status updates
- C. Organizational process assets updates
- D. Work performance information

Answer: D

NEW QUESTION 532

- (Topic 3)

Which stakeholder communicates with higher levels of management to gather organizational support and promote project benefits?

- A. Portfolio manager
- B. Project sponsor
- C. Project manager
- D. Project management office

Answer: B

NEW QUESTION 537

- (Topic 3)

Analytical techniques are a tool and technique of which process in Project Procurement Management?

- A. Plan Procurement Management
- B. Control Procurements
- C. Conduct Procurements
- D. Close Procurements

Answer: C

NEW QUESTION 541

- (Topic 3)

Which tool within the Perform Quality Control process identifies whether or not a process has a predictable performance?

- A. Cause and effect diagram
- B. Control charts
- C. Pareto chart
- D. Histogram

Answer: B

NEW QUESTION 545

- (Topic 3)

An intentional activity to modify a nonconforming product or product component is called:

- A. defect repair
- B. work repair
- C. corrective action
- D. preventive action

Answer: A

NEW QUESTION 548

- (Topic 3)

The integrative nature of project management requires which Process Group to interact with the other Process Groups?

- A. Planning
- B. Executing
- C. Monitoring and Controlling
- D. Project Management

Answer: C

NEW QUESTION 551

- (Topic 3)

Which of the Perform Quality Assurance tools and techniques may enhance the creation of the work breakdown structure (WBS) to give structure to the decomposition of the scope?

- A. Activity network diagrams
- B. Affinity diagrams
- C. Matrix diagrams
- D. Interrelationship digraphs

Answer: B

NEW QUESTION 554

- (Topic 3)

Which of the following can be used as an input for Define Scope?

- A. Product analysis
- B. Project charter
- C. Scope baseline
- D. Project scope statement

Answer: B

NEW QUESTION 556

- (Topic 3)

The basis of identification for current or potential problems to support later claims or new procurements is provided by:

- A. A risk urgency assessment.
- B. The scope baseline.
- C. Work performance information.
- D. Procurement audits.

Answer: C

NEW QUESTION 557

- (Topic 3)

Approved change requests, approved corrective actions, and updates to organizational process assets are all outputs of which project management process?

- A. Risk response planning
- B. Manage stakeholders
- C. Scope definition
- D. Performance reporting

Answer: B

NEW QUESTION 562

- (Topic 3)

Ensuring that both parties meet contractual obligations and that their own legal rights are protected is a function of:

- A. Conduct Procurements.
- B. Close Procurements.
- C. Administer Procurements,
- D. Plan Procurements.

Answer: C

NEW QUESTION 566

- (Topic 3)

The cost of nonconformance in a project includes:

- A. testing
- B. rework
- C. inspections
- D. training

Answer: B

NEW QUESTION 570

- (Topic 4)

Which technique is commonly used for the Quantitative Risk Analysis activity?

- A. Brainstorming
- B. Strategies for Opportunities

- C. Decision Tree Analysis
- D. Risk Data Quality Assessment

Answer: C

NEW QUESTION 573

- (Topic 4)

Work performance information and cost forecasts are outputs of which Project Cost Management process?

- A. Estimate Costs
- B. Plan Cost Management
- C. Determine Budget
- D. Control Costs

Answer: D

NEW QUESTION 575

- (Topic 4)

Projects are authorized by which of the following individuals?

- A. Project managers
- B. Stakeholders
- C. Functional managers
- D. Sponsors

Answer: D

NEW QUESTION 579

- (Topic 4)

Which tool or technique is used in the Estimate Costs process?

- A. Acquisition
- B. Earned value management
- C. Vendor bid analysis
- D. Forecasting

Answer: C

NEW QUESTION 581

- (Topic 4)

In Project Cost Management, which input is exclusive to the Determine Budget process?

- A. Scope baseline
- B. Organizational process assets
- C. Project schedule
- D. Resource calendars

Answer: D

NEW QUESTION 583

- (Topic 4)

When cost variance is negative and schedule variance is positive, the project is:

- A. under budget and behind schedule.
- B. over budget and ahead of schedule.
- C. on schedule.
- D. complete; all planned values have been earned.

Answer: B

NEW QUESTION 588

- (Topic 4)

How is the schedule variance calculated using the earned value technique?

- A. EV less AC
- B. AC less PV
- C. EV less PV
- D. AC less EV

Answer: C

NEW QUESTION 591

- (Topic 4)

An input to the Control Quality process is:

- A. Activity attributes
- B. Quality control measurements
- C. Enterprise environmental factors
- D. Deliverables

Answer: D

NEW QUESTION 596

- (Topic 4)

The following chart contains information about the tasks in a project.

Task	PV	AC	EV
1	10,000	10,000	10,000
2	10,000	8,000	10,000
3	10,000	8,000	8,000
4	9,000	12,000	10,000
5	10,000	12,000	12,000
6	10,000	10,000	12,000
7	12,000	12,000	10,000
8	10,000	8,000	9,000
9	12,000	10,000	11,000

Based on the chart, what is the schedulevariance (SV) for Task 8?

- A. -2,000
- B. -1,000
- C. 1,000
- D. 2,000

Answer: B

NEW QUESTION 600

- (Topic 4)

Cost baseline is an output of which of the following processes?

- A. Control Costs
- B. Determine Budget
- C. Estimate Costs
- D. Estimate Activity Resources

Answer: B

NEW QUESTION 605

- (Topic 4)

A collection of projects managed as a group to achieve strategic objectives is referred to as a:

- A. plan
- B. process
- C. program

D. portfolio

Answer: D

NEW QUESTION 607

- (Topic 4)

An output of the Plan Quality Management process is:

- A. A process improvement plan,
- B. Quality control measurements.
- C. Work performance information,
- D. The project management plan.

Answer: A

NEW QUESTION 612

- (Topic 4)

Which technique is utilized in the Control Schedule process?

- A. Performance measure
- B. Baseline schedule
- C. Schedule network analysis
- D. Variance analysis

Answer: D

NEW QUESTION 615

- (Topic 4)

Analyzing the strengths, weaknesses, opportunities, and threats (SWOT) of a project is known as:

- A. calculating cost of quality
- B. comparing project benefits
- C. performing measurements analysis
- D. identifying risks

Answer: D

NEW QUESTION 618

- (Topic 4)

Funding limit reconciliation is a tool and technique used in which process?

- A. Control Costs
- B. Determine Budget
- C. Estimate Costs
- D. Control Budget

Answer: B

NEW QUESTION 619

- (Topic 4)

A risk response strategy in which the project team shifts the impact of a threat, together with ownership of the response, to a third party is called:

- A. mitigate
- B. accept
- C. transfer
- D. avoid

Answer: C

NEW QUESTION 624

- (Topic 4)

Scope, schedule, and cost parameters are integrated in the:

- A. Performance measurement baseline.
- B. Analysis of project forecasts,
- C. Summary of changes approved in a period,
- D. Analysis of past performance.

Answer: A

NEW QUESTION 626

- (Topic 4)

An effective technique for resolving conflict that incorporates multiple viewpoints from differing perspectives to achieve consensus and commitment is:

- A. smooth/accommodate.

- B. force/direct,
- C. collaborate/problem solve,
- D. compromise/reconcile.

Answer: C

NEW QUESTION 629

- (Topic 4)

Which of the following is a tool or technique used in the Determine Budget process?

- A. Variance analysis
- B. Three-point estimating
- C. Bottom-up estimating
- D. Historical relationships

Answer: D

NEW QUESTION 632

- (Topic 4)

The process of monitoring the status of the project and product scope as well as managing the changes to the scope baseline is known as:

- A. Validate Scope.
- B. Plan Scope Management.
- C. Control Scope.
- D. Define Scope.

Answer: C

NEW QUESTION 637

- (Topic 4)

The following chart contains information about the tasks in a project.

Task	PV	AC	EV
1	10,000	10,000	10,000
2	10,000	8,000	10,000
3	10,000	8,000	8,000
4	9,000	12,000	10,000
5	10,000	12,000	12,000
6	10,000	10,000	12,000
7	12,000	12,000	10,000
8	10,000	8,000	9,000
9	12,000	10,000	11,000

Based on the chart, what is the cost variance (CV) for Task 6?

- A. -2,000
- B. 1,000
- C. 2,000

Answer: D

NEW QUESTION 639

- (Topic 4)

What is the term assigned to products or services having the same functional use but different technical characteristics?

- A. Scope
- B. Quality
- C. Specification
- D. Grade

Answer: D

NEW QUESTION 644

- (Topic 4)

Which output of Project Cost Management consists of quantitative assessments of the probable costs required to complete project work?

- A. Activity cost estimates
- B. Earned value management
- C. Cost management plan
- D. Cost baseline

Answer: A

NEW QUESTION 648

- (Topic 4)

Which group is formally chartered and responsible for reviewing, evaluating, approving, delaying, or rejecting changes to the project and for recording and communicating decisions?

- A. Project team
- B. Focus group
- C. Change control board
- D. Project stakeholders

Answer: C

NEW QUESTION 649

- (Topic 4)

What happens to a stakeholder's project influence over time?

- A. Increases
- B. Decreases
- C. Stays the same.
- D. Has no bearing.

Answer: B

NEW QUESTION 653

- (Topic 4)

Which tool or technique is used to manage change requests and the resulting decisions?

- A. Change control tools
- B. Expert judgment
- C. Delphi technique
- D. Change log

Answer: A

NEW QUESTION 654

- (Topic 4)

Which standard examines an enterprise's project management process capabilities?

- A. PMBOK Guide
- B. The Standard for Program Management
- C. Organizational Project Management Maturity Model "OPMJ"
- D. The Standard for Portfolio Management

Answer: C

NEW QUESTION 659

- (Topic 4)

Which process involves monitoring the status of the project to update the project costs and managing changes to the cost baseline?

- A. Estimate Costs
- B. Control Costs

- C. Determine Budget
- D. Plan Cost Management

Answer: B

NEW QUESTION 660

- (Topic 4)

Which Process Group's purpose is to track, review, and regulate the progress and performance of the project; identify any areas in which changes to the plan are required; and initiate the corresponding changes?

- A. Monitoring and Controlling
- B. Initiating
- C. Planning
- D. Executing

Answer: A

NEW QUESTION 665

- (Topic 4)

During which process does the project team receive bids and proposals?

- A. Conduct Procurements
- B. Plan Procurements
- C. Estimate Costs
- D. Control Budget

Answer: A

NEW QUESTION 669

- (Topic 4)

As part of a mid-project evaluation, your project sponsor has asked you to provide a forecast of total project cost. You should calculate the forecast using which of the following methods?

- A. BAC
- B. EAC
- C. ETC
- D. WBS

Answer: B

NEW QUESTION 674

- (Topic 4)

Which technique is utilized in the Schedule Control process?

- A. Performance Measure
- B. Baseline Schedule
- C. Schedule Comparison
- D. Variance Analysis

Answer: D

NEW QUESTION 678

- (Topic 4)

Which Develop Schedule tool and technique produces a theoretical early start date and late start date?

- A. Critical path method
- B. Variance analysis
- C. Schedule compression
- D. Schedule comparison bar charts

Answer: A

NEW QUESTION 680

- (Topic 4)

When does Monitor and Control Risks occur?

- A. At project initiation
- B. During work performance analysis
- C. Throughout the life of the project
- D. At project milestones

Answer: C

NEW QUESTION 683

- (Topic 4)

Forecasts, requested changes, recommended corrective actions, and organizational process asset updates are all outputs of which process?

- A. Risk response planning
- B. Risk monitoring and control
- C. Performance reporting
- D. Manage stakeholders

Answer: B

NEW QUESTION 684

- (Topic 4)

Which type of estimating can produce higher levels of accuracy, depending upon the sophistication and underlying data built into the model?

- A. Bottom-up
- B. Three-point
- C. Parametric
- D. Analogous

Answer: C

NEW QUESTION 686

- (Topic 4)

Using parametric estimating, if an assigned resource is capable of producing 120 units per hour, how many hours are required to produce 12,000 units?

- A. 100
- B. 120
- C. 1,000
- D. 1,200

Answer: A

NEW QUESTION 690

- (Topic 4)

Organizational process assets, a lessons-learned database, and historical information are all inputs to which process?

- A. Plan Cost Management
- B. Plan Scope Management
- C. Plan Stakeholder Management
- D. Plan Schedule Management

Answer: C

NEW QUESTION 693

- (Topic 4)

The chart below is an example of a:

ID	Requirements Description	Project Objectives	WBS Deliverables	Product Design	Product Development	Test Cases
001						
002						
003						

- A. Responsibility assignment matrix (RAM)
- B. Work breakdown structure (WBS)
- C. RACI chart
- D. Requirements traceability matrix

Answer: D

NEW QUESTION 694

- (Topic 4)

Which estimating technique uses the actual costs of previous similar projects as a basis for estimating the costs of the current project?

- A. Analogous
- B. Parametric
- C. Bottom-up
- D. Top-down

Answer: A

NEW QUESTION 699

- (Topic 4)

Which of the following schedule network analysis techniques is applied when a critical path method calculation has been completed and resources availability is critical?

- A. Applying calendars
- B. Resource leveling
- C. Resource planning
- D. Resource conflict management

Answer: B

NEW QUESTION 702

- (Topic 4)

Which earned value management (EVM) metric is a measure of the cost efficiency of budgeted resources expressed as a ratio of earned value (EV) to actual cost (AC) and is considered a critical EVM metric?

- A. Cost variance (CV)
- B. Cost performance index (CPI)
- C. Budget at completion (BAC)
- D. Variance at completion (VAC)

Answer: B

NEW QUESTION 705

- (Topic 4)

Testing falls into which of the following categories of cost of quality?

- A. Internal failure costs
- B. Prevention costs
- C. Appraisal costs
- D. External failure costs

Answer: C

NEW QUESTION 708

- (Topic 4)

Cost baseline is an output of which of the following processes?

- A. Estimate Activity Resources
- B. Estimate Costs
- C. Determine Budget
- D. Control Costs

Answer: C

NEW QUESTION 711

- (Topic 4)

Which of the Project Time Management processes analyzes activity sequencing, durations, resource requirements, and schedule constraints?

- A. Estimate Activity Durations
- B. ControlSchedule
- C. Sequence Activities
- D. Develop Schedule

Answer: D

NEW QUESTION 713

- (Topic 4)

Which process in Project Time Management includes reserve analysis as a tool or technique?

- A. Estimate Activity Resources
- B. Sequence Activities
- C. Estimate Activity Durations
- D. Develop Schedule

Answer: C

NEW QUESTION 715

- (Topic 4)

A key benefit of the Manage Communications process is that it enables:

- A. The best use of communication methods.
- B. An efficient and effective communication flow.
- C. Project costs to be reduced.
- D. The best use of communication technology.

Answer: B

NEW QUESTION 720

- (Topic 4)

What is the minimum a project schedule must include?

- A. Variance analysis
- B. A planned start date and a planned finish date for each schedule activity
- C. A critical path diagram
- D. Critical chain analysis

Answer: B

NEW QUESTION 721

- (Topic 4)

What is the name of the statistical method that helps identify which factors may influence specific variables of a product or process under development or in production?

- A. Failure modes and effects analysis
- B. Design of experiments
- C. Quality checklist
- D. Risk analysis

Answer: B

NEW QUESTION 722

- (Topic 4)

An input of the Plan Procurement Management process is:

- A. Make-or-buy decisions.
- B. Activity cost estimates.
- C. Seller proposals.
- D. Procurement documents.

Answer: B

NEW QUESTION 726

- (Topic 4)

Which enterprise environmental factors may influence Plan Schedule Management?

- A. Cultural views regarding time schedules and professional and ethical behaviors
- B. Historical information and change control procedures
- C. Risk control procedures and the probability and impact matrix
- D. Resource availability and organizational culture and structure

Answer: D

NEW QUESTION 727

- (Topic 4)

While processes in the Planning Process Group seek to collect feedback and define project documents to guide project work, organizational procedures dictate when the project planning:

- A. ends.
- B. begins.
- C. delays.
- D. deviates.

Answer: A

NEW QUESTION 732

- (Topic 4)

Budgets reserved for unplanned changes to project scope and cost are:

- A. Contingency reserves.
- B. Management reserves.
- C. Authorized budgets.
- D. Cost baselines.

Answer: B

NEW QUESTION 735

- (Topic 4)

At the start of a typical project life cycle, costs are:

- A. low, peak as work is carried out, and drop as the project nears the end.

- B. low, become steady as work is carried out, and increase as the project nears the end.
 C. high, drop as work is carried out, and increase as the project nears the end.
 D. high, become low as work is carried out, and drop as the project nears the end.

Answer: A

NEW QUESTION 740

- (Topic 4)

Reserve analysis is a tool and technique used in which process?

- A. Plan Risk Management
 B. Plan Risk Responses
 C. Identify Risks
 D. Control Risks

Answer: D

NEW QUESTION 741

- (Topic 4)

The following chart contains information about the tasks in a project.

Task	PV	AC	EV
1	10,000	10,000	10,000
2	10,000	8,000	10,000
3	10,000	8,000	8,000
4	9,000	12,000	10,000
5	10,000	12,000	12,000
6	10,000	10,000	12,000
7	12,000	12,000	10,000
8	10,000	8,000	9,000
9	12,000	10,000	11,000

Based on the chart, what is the schedule performance index (SPI) for Task 4?

- A. 0.83
 B. 0.9
 C. 1.11
 D. 1.33

Answer: C

NEW QUESTION 745

- (Topic 4)

Which process occurs within the Monitoring and Controlling Process Group?

- A. Control Costs
 B. Plan Quality
 C. Perform Quantitative Risk Analysis
 D. Determine Budget

Answer: A

NEW QUESTION 747

- (Topic 4)

An input to the Perform Quantitative Risk Analysis process is the:

- A. quality management plan.
- B. project management plan.
- C. communications management plan.
- D. schedule management plan.

Answer: D

NEW QUESTION 752

- (Topic 4)

What quality control tool graphically represents how various elements of a system interrelate?

- A. Control chart
- B. Flowchart
- C. Run chart
- D. Pareto chart

Answer: B

NEW QUESTION 754

- (Topic 4)

What is an objective of the Developing Project Team Process?

- A. Feelings of trust and improved cohesiveness
- B. Ground rules for interaction
- C. Enhanced resource availability
- D. Functional managers become more involved.

Answer: A

NEW QUESTION 757

- (Topic 4)

Which type of control tool identifies whether or not a process has a predictable performance?

- A. Cause and effect diagram
- B. Control Charts
- C. Pareto Chart
- D. Histogram

Answer: B

NEW QUESTION 762

- (Topic 4)

An input to the Plan Procurement Management process is:

- A. Source selection criteria.
- B. Market research.
- C. A stakeholder register.
- D. A records management system.

Answer: C

NEW QUESTION 764

- (Topic 4)

A project team member agrees to change a project deliverable after a conversation with an external stakeholder. It is later discovered that the change has had an adverse effect on another deliverable. This could have been avoided if the project team had implemented:

- A. Quality assurance.
- B. A stakeholder management plan.
- C. Project team building.
- D. Integrated change control.

Answer: D

NEW QUESTION 766

- (Topic 4)

Which term describes an assessment of correctness?

- A. Accuracy
- B. Precision

- C. Grade
- D. Quality

Answer: A

NEW QUESTION 768

- (Topic 4)

A tool and technique used during the Perform Qualitative Risk Analysis process is:

- A. risk data quality assessment.
- B. variance and trend analysis.
- C. data gathering and representation techniques.
- D. risk audits.

Answer: A

NEW QUESTION 773

- (Topic 4)

Which input to the Manage Stakeholder Engagement process is used to document changes that occur during the project?

- A. Issue log
- B. Change log
- C. Expert judgment
- D. Change requests

Answer: B

NEW QUESTION 774

- (Topic 4)

Which items are an output of the Perform Integrated Change Control process?

- A. Work performance reports
- B. Accepted deliverables
- C. Project management plan updates
- D. Organizational process assets

Answer: C

NEW QUESTION 778

- (Topic 4)

Specification of both the deliverables and the processes is the focus of:

- A. Change control
- B. Configuration control
- C. Project monitoring and control
- D. Issue control

Answer: A

NEW QUESTION 781

- (Topic 5)

Which of the following tools and techniques are utilized in the Close Project or Phase process?

- A. Project management information system
- B. Product analysis
- C. Expert judgment
- D. Inspection

Answer: C

NEW QUESTION 782

- (Topic 5)

At the completion of a project, a report is prepared that details the outcome of the research conducted on a global trend during the project. Which item did this project create?

- A. Result
- B. Product
- C. Service
- D. Improvement

Answer: A

NEW QUESTION 784

- (Topic 5)

When is a project finished?

- A. After verbal acceptance of the customer or sponsor
- B. After lessons learned have been documented in contract closure
- C. When the project objectives have been met
- D. After resources have been released

Answer: C

NEW QUESTION 788

- (Topic 5)

Which schedule compression technique has phases or activities done in parallel that would normally have been done sequentially?

- A. Crashing
- B. Fast tracking
- C. Leads and lags adjustment
- D. Parallel task development

Answer: B

NEW QUESTION 790

- (Topic 5)

When a backward pass is calculated from a schedule constraint that is later than the early finish date that has been calculated during a forward pass calculation, this causes which type of total float?

- A. Negative
- B. Zero
- C. Positive
- D. Free

Answer: C

NEW QUESTION 793

- (Topic 5)

Which of the following is an example of the simplest fixed-price contract?

- A. Purchase requisition
- B. Purchase order
- C. Verbal agreement
- D. Request for quote

Answer: B

NEW QUESTION 794

- (Topic 5)

Conditions that are not under the control of the project team that influence, direct, or constrain a project are called:

- A. Enterprise environmental factors
- B. Work performance reports
- C. Organizational process assets
- D. Context diagrams

Answer: A

NEW QUESTION 799

- (Topic 5)

Which tool or technique used in the Control Procurements process can be conducted during the execution of the project to verify compliance with deliverables?

- A. Procurement documents
- B. Inspection and audits
- C. Estimate budget
- D. Risk register

Answer: B

NEW QUESTION 800

- (Topic 5)

During which process does a project manager review all prior information to ensure that all project work is completed and that the project has met its objectives?

- A. Monitor and Control Project Work
- B. Perform Quality Assurance
- C. Close Project or Phase
- D. Control Scope

Answer: C

NEW QUESTION 803

- (Topic 5)

A project has a current cost performance index (CPI) of 1.25. To date, US\$10,000 have been spent on performing the project work. What is the earned value of the work completed to date?

- A. US\$S000
- B. US\$9500
- C. US\$10,000
- D. US\$12,500

Answer: D

NEW QUESTION 807

- (Topic 5)

Procurement audits, negotiated settlements, and a records management system are tools and techniques used in which Procurement Management process?

- A. Close Procurements
- B. Administer Procurements
- C. Plan Procurements
- D. Conduct Procurements

Answer: A

NEW QUESTION 811

- (Topic 5)

When alternative dispute resolution (ADR) is necessary, which tool or technique should be utilized?

- A. Interactive communication
- B. Claims administration
- C. Conflict management
- D. Performance reporting

Answer: B

NEW QUESTION 813

- (Topic 5)

Project or phase closure guidelines or requirements, historical information, and the lessons learned knowledge base are examples of which input to the Close Project or Phase process?

- A. Organizational process assets
- B. A work breakdown structure
- C. The project management plan
- D. Enterprise environmental factors

Answer: A

NEW QUESTION 815

- (Topic 5)

The individual or group that provides resources and support for a project and is accountable for success is the:

- A. sponsor
- B. customer
- C. business partners
- D. functional managers

Answer: A

NEW QUESTION 817

- (Topic 5)

Which Knowledge Areas include processes from the Closing Process Group?

- A. Project Quality Management and Project Time Management
- B. Project Scope Management and Project Risk Management
- C. Project Stakeholder Management and Project Cost Management
- D. Project Integration Management and Project Procurement Management

Answer: D

NEW QUESTION 818

- (Topic 5)

What type of planning is used where the work to be accomplished in the near term is planned in detail, while work in the future is planned at a higher level?

- A. Finish-to-start planning
- B. Rolling wave planning
- C. Short term planning
- D. Dependency determination

Answer: B

NEW QUESTION 821

- (Topic 5)

Which tools or techniques are used during the Close Project or Phase process?

- A. Reserve analysis and expert judgment
- B. Facilitation techniques and meetings
- C. Expert judgment and analytical techniques
- D. Performance reviews and meetings

Answer: C

NEW QUESTION 825

- (Topic 5)

An output of the Direct and Manage Project Work process is:

- A. Deliverables.
- B. Activity lists.
- C. A work breakdown structure.
- D. A scope statement.

Answer: A

NEW QUESTION 826

- (Topic 5)

Sharing good practices introduced or implemented in similar projects in the organization and/or industry is an example of:

- A. quality audits
- B. process analysis
- C. statistical sampling
- D. benchmarking

Answer: A

NEW QUESTION 830

- (Topic 5)

Which of the following characteristics are found in a functional organizational structure?

- A. Little or no project manager authority, little or no resource availability, and the functional manager controls the project budget
- B. Limited project manager authority, limited resource availability, and a part-time project manager's role
- C. Low to moderate project manager authority, low to moderate resource availability, and a full-time project manager's role
- D. High to almost total project manager authority, high to almost total resource availability, and full-time project management administrative staff

Answer: A

NEW QUESTION 835

- (Topic 5)

Conflict should be best addressed in which manner?

- A. Early, in private, using a direct, collaborative approach
- B. Early, in public, using an indirect, collaborative approach
- C. Early, in private, using an indirect, cooperative approach
- D. As late as possible, in public, using a direct, confrontational approach

Answer: A

NEW QUESTION 840

- (Topic 5)

An output of the Close Project (or Close Phase) process is:

- A. accepted deliverables
- B. organizational process asset updates
- C. work performance information
- D. project management plan updates

Answer: B

NEW QUESTION 843

- (Topic 5)

Information collected on the status of project activities being performed to accomplish the project work is known as what?

- A. Project management information system
- B. Work performance information
- C. Work breakdown structure
- D. Variance analysis

Answer:

B

NEW QUESTION 846

- (Topic 5)

A project manager builds consensus and overcomes obstacles by employing which communication technique?

- A. Listening
- B. Facilitation
- C. Meeting management
- D. Presentation

Answer: B

NEW QUESTION 850

- (Topic 5)

Which organizational process assets update is performed during the Close Procurements process?

- A. Procurement audit
- B. Lessons learned
- C. Performance reporting
- D. Payment requests

Answer: B

NEW QUESTION 853

- (Topic 5)

During which process would stakeholders provide formal acceptance of the completed project scope?

- A. Perform Quality Control
- B. Verify Scope
- C. Control Scope
- D. Develop Schedule

Answer: B

NEW QUESTION 858

- (Topic 5)

The procurement process that documents agreements and related documentation for future reference is known as:

- A. Plan Procurements.
- B. Control Procurements.
- C. Close Procurements.
- D. Conduct Procurements.

Answer: C

NEW QUESTION 860

- (Topic 5)

Which technique should a project manager use in a situation in which a collaborative approach to conflict management is not possible?

- A. Coaching
- B. Avoidance
- C. Consensus
- D. Influencing

Answer: B

NEW QUESTION 864

- (Topic 5)

Lessons learned documentation is gathered during which of the following Project Management Process Groups?

- A. Planning
- B. Executing
- C. Closing
- D. Initiating

Answer: C

NEW QUESTION 866

- (Topic 5)

Verification of project deliverables occurs during which process?

- A. Develop preliminary project scope statement
- B. Close Project or Phase
- C. Develop project charter
- D. Create WBS

Answer: B

NEW QUESTION 870

- (Topic 5)

Which of the following choices is a contract closure tool or technique?

- A. Contract plan
- B. Procurement plan
- C. Closure process
- D. Procurement audits

Answer: D

NEW QUESTION 874

- (Topic 5)

The cost benefit analysis tool is used for creating:

- A. Pareto charts.
- B. quality metrics.
- C. change requests,
- D. Ishikawa diagrams.

Answer: B

NEW QUESTION 878

- (Topic 5)

The end point of a project phase can be referred to as:

- A. project failure
- B. closing process
- C. stage gate
- D. lifecycle

Answer: C

NEW QUESTION 880

- (Topic 5)

When closing a project or phase, part of the process may require the use of which type of analysis?

- A. Reserve analysis
- B. Regression analysis
- C. Document analysis
- D. Product analysis

Answer: B

NEW QUESTION 882

- (Topic 5)

The process of identifying and documenting relationships among the project activities is known as:

- A. Control Schedule.
- B. Sequence Activities.
- C. Define Activities.
- D. Develop Schedule.

Answer: B

NEW QUESTION 887

.....

Thank You for Trying Our Product

We offer two products:

1st - We have Practice Tests Software with Actual Exam Questions

2nd - Questions and Answers in PDF Format

PMP Practice Exam Features:

- * PMP Questions and Answers Updated Frequently
- * PMP Practice Questions Verified by Expert Senior Certified Staff
- * PMP Most Realistic Questions that Guarantee you a Pass on Your FirstTry
- * PMP Practice Test Questions in Multiple Choice Formats and Updatesfor 1 Year

100% Actual & Verified — Instant Download, Please Click
[Order The PMP Practice Test Here](#)