

# CompTIA

## Exam Questions CV0-003

CompTIA Cloud+ Certification Exam



#### NEW QUESTION 1

A support engineer wants to prevent users from running malware on several IaaS compute instances. Which of the following will BEST achieve this objective?

- A. Encrypt all applications that users should not access.
- B. Set the execute filesystem permissions on the desired applications only.
- C. Implement an application whitelisting policy.
- D. Disable file sharing on the instance.

**Answer: C**

#### NEW QUESTION 2

A company recently experienced a power outage that lasted 30 minutes. During this time, a whole rack of servers was inaccessible, even though the servers did not lose power.

Which of the following should be investigated FIRST?

- A. Server power
- B. Rack power
- C. Switch power
- D. SAN power

**Answer: C**

#### NEW QUESTION 3

Some VMs that are hosted on a dedicated host server have each been allocated with 32GB of memory. Some of VMs are not utilizing more than 30% of the allocation. Which of the following should be enabled to optimize the memory utilization?

- A. Auto-scaling of compute
- B. Oversubscription
- C. Dynamic memory allocations on guests
- D. Affinity rules in the hypervisor

**Answer: C**

#### NEW QUESTION 4

A cloud administrator has finished setting up an application that will use RDP to connect. During testing, users experience a connection timeout error.

Which of the following will MOST likely solve the issue?

- A. Checking user passwords
- B. Configuring QoS rules
- C. Enforcing TLS authentication
- D. Opening TCP port 3389

**Answer: D**

#### NEW QUESTION 5

A Chief Information Security Officer (CISO) is evaluating the company's security management program. The CISO needs to locate all the assets with identified deviations and mitigation measures. Which of the following would help the CISO with these requirements?

- A. An SLA document
- B. ADR plan
- C. SOC procedures
- D. A risk register

**Answer: C**

#### NEW QUESTION 6

A systems administrator is deploying a new storage array for backups. The array provides 1PB of raw disk space and uses 14TB nearline SAS drives. The solution must tolerate at least two failed drives in a single RAID set.

Which of the following RAID levels satisfies this requirement?

- A. RAID 0
- B. RAID 1
- C. RAID 5
- D. RAID 6
- E. RAID 10

**Answer: D**

#### NEW QUESTION 7

A systems administrator needs to convert ten physical servers to virtual.

Which of the following would be the MOST efficient conversion method for the administrator to use?

- A. Rebuild the servers from scratch
- B. Use the vendor's conversion tool
- C. Clone the hard drive

D. Restore from backup

**Answer:** C

#### NEW QUESTION 8

A systems administrator needs to configure an email client to ensure data integrity of the email messages. Which of the following provides the BEST mechanism to achieve this goal?

- A. Cyclic redundancy check
- B. SHA-1 hashes
- C. SHA-256 hashes
- D. Digital signature

**Answer:** A

#### NEW QUESTION 9

Due to a policy change, a few of a customer's application VMs have been migrated to synchronously replicated storage. The customer now reports that performance is lower. The systems administrator checks the resource usage and discovers CPU utilization is at 60% and available memory is at 30%. Which of the following is the MOST likely cause?

- A. There is not enough vCPU assigned
- B. The application is not compatible with the new settings
- C. The new configuration is adding latency
- D. The memory of the VM is underallocated

**Answer:** B

#### NEW QUESTION 10

To save on licensing costs, the on-premises, IaaS-hosted databases need to be migrated to a public DBaaS solution. Which of the following would be the BEST technique?

- A. Live migration
- B. Physical-to-virtual
- C. Storage-level mirroring
- D. Database replication

**Answer:** B

#### NEW QUESTION 10

Lateral-moving malware has infected the server infrastructure.

Which of the following network changes would MOST effectively prevent lateral movement in the future?

- A. Implement DNSSEC in all DNS servers
- B. Segment the physical network using a VLAN
- C. Implement microsegmentation on the network
- D. Implement 802.1X in the network infrastructure

**Answer:** B

#### NEW QUESTION 11

A database analyst reports it takes two hours to perform a scheduled job after onboarding 10,000 new users to the system. The analyst made no changes to the scheduled job before or after onboarding the users. The database is hosted in an IaaS instance on a cloud provider. Which of the following should the cloud administrator evaluate to troubleshoot the performance of the job?

- A. The IaaS compute configurations, the capacity trend analysis reports, and the storage IOPS
- B. The hypervisor logs, the memory utilization of the hypervisor host, and the network throughput of the hypervisor
- C. The scheduled job logs for successes and failures, the time taken to execute the job, and the job schedule
- D. Migrating from IaaS to on premises, the network traffic between on-premises users and the IaaS instance, and the CPU utilization of the hypervisor host

**Answer:** C

#### NEW QUESTION 13

A vendor is installing a new retail store management application for a customer. The application license ensures software costs are low when the application is not being used, but costs go up when use is higher.

Which of the following licensing models is MOST likely being used?

- A. Socket-based
- B. Core-based
- C. Subscription
- D. Volume-based

**Answer:** D

#### NEW QUESTION 14

An engineer is responsible for configuring a new firewall solution that will be deployed in a new public cloud environment. All traffic must pass through the firewall.

The SLA for the firewall is 99.999%. Which of the following should be deployed?

- A. Two load balancers behind a single firewall
- B. Firewalls in a blue-green configuration
- C. Two firewalls in a HA configuration
- D. A web application firewall

**Answer:** C

#### NEW QUESTION 17

A systems administrator has finished installing monthly updates to servers in a cloud environment. The administrator notices certain portions of the playbooks are no longer functioning. Executing the playbook commands manually on a server does not work as well. There are no other reports of issues.

Which of the following is the MOST likely cause of this issue?

- A. Change management failure
- B. Service overload
- C. Patching failure
- D. Job validation issues
- E. Deprecated features

**Answer:** D

#### NEW QUESTION 18

A cloud engineer is responsible for managing two cloud environments from different MSPs. The security department would like to inspect all traffic from the two cloud environments.

Which of the following network topology solutions should the cloud engineer implement to reduce long-term maintenance?

- A. Chain
- B. Star
- C. Mesh
- D. Hub and spoke

**Answer:** D

#### NEW QUESTION 22

A systems administrator needs to configure monitoring for a private cloud environment. The administrator has decided to use SNMP for this task.

Which of the following ports should the administrator open on the monitoring server's firewall?

- A. 53
- B. 123
- C. 139
- D. 161

**Answer:** D

#### NEW QUESTION 27

An update is being deployed to a web application, and a systems administrator notices the cloud SQL database has stopped running. The VM is responding to pings, and there were not any configuration changes scheduled for the VM. Which of the following should the administrator check NEXT?

- A. Logs on the VM
- B. Firewall on the VM
- C. Memory on the VM
- D. vGPU performance on the VM

**Answer:** A

#### NEW QUESTION 30

An organization is hosting a DNS domain with private and public IP ranges. Which of the following should be implemented to achieve ease of management?

- A. Network peering
- B. A CDN solution
- C. A SDN solution
- D. An IPAM solution

**Answer:** D

#### NEW QUESTION 31

A storage array that is used exclusively for datastores is being decommissioned, and a new array has been installed. Now the private cloud administrator needs to migrate the data.

Which of the following migration methods would be the BEST to use?

- A. Conduct a V2V migration
- B. Perform a storage live migration
- C. Rsync the data between arrays
- D. Use a storage vendor migration appliance

**Answer:** D

#### NEW QUESTION 33

A cloud architect wants to minimize the risk of having systems administrators in an IaaS compute instance perform application code changes. The development group should be the only group allowed to modify files in the directory. Which of the following will accomplish the desired objective?

- A. Remove the file write permissions for the application service account.
- B. Restrict the file write permissions to the development group only.
- C. Add access to the fileshare for the systems administrator's group.
- D. Deny access to all development user accounts

**Answer: B**

#### NEW QUESTION 38

Which of the following cloud services is fully managed?

- A. IaaS
- B. GPU in the cloud
- C. IoT
- D. Serverless compute
- E. SaaS

**Answer: C**

#### NEW QUESTION 39

An organization is required to set a custom registry key on the guest operating system. Which of the following should the organization implement to facilitate this requirement?

- A. A configuration management solution
- B. A log and event monitoring solution
- C. A file integrity check solution
- D. An operating system ACL

**Answer: A**

#### NEW QUESTION 44

A marketing team is using a SaaS-based service to send emails to large groups of potential customers. The internally managed CRM system is configured to generate a list of target customers automatically on a weekly basis, and then use that list to send emails to each customer as part of a marketing campaign. Last week, the first email campaign sent emails successfully to 3,000 potential customers. This week, the email campaign attempted to send out 50,000 emails, but only 10,000 were sent.

Which of the following is the MOST likely reason for not sending all the emails?

- A. API request limit
- B. Incorrect billing account
- C. Misconfigured auto-scaling
- D. Bandwidth limitation

**Answer: A**

#### NEW QUESTION 47

A media company has made the decision to migrate a physical, internal file server to the cloud and use a web-based interface to access and manage the files. The users must be able to use their current corporate logins.

Which of the following is the MOST efficient way to achieve this goal?

- A. Deploy a VM in a cloud, attach storage, and copy the files across
- B. Use a SaaS service with a directory service federation
- C. Deploy a fileshare in a public cloud and copy the files across
- D. Copy the files to the object storage location in a public cloud

**Answer: C**

#### NEW QUESTION 52

Which of the following will provide a systems administrator with the MOST information about potential attacks on a cloud IaaS instance?

- A. Network flows
- B. FIM
- C. Software firewall
- D. HIDS

**Answer: A**

#### NEW QUESTION 56

A cloud administrator is reviewing the authentication and authorization mechanism implemented within the cloud environment. Upon review, the administrator discovers the sales group is part of the finance group, and the sales team members can access the financial application. Single sign-on is also implemented, which makes access much easier.

Which of the following access control rules should be changed?

- A. Discretionary-based
- B. Attribute-based
- C. Mandatory-based
- D. Role-based

**Answer:** D

#### NEW QUESTION 61

A systems administrator is creating a playbook to run tasks against a server on a set schedule. Which of the following authentication techniques should the systems administrator use within the playbook?

- A. Use the server's root credentials
- B. Hard-code the password within the playbook
- C. Create a service account on the server
- D. Use the administrator's SSO credentials

**Answer:** D

#### NEW QUESTION 63

Company A has acquired Company B and is in the process of integrating their cloud resources. Company B needs access to Company A's cloud resources while retaining its IAM solution. Which of the following should be implemented?

- A. Multifactor authentication
- B. Single sign-on
- C. Identity federation
- D. Directory service

**Answer:** C

#### NEW QUESTION 68

A systems administrator is analyzing a report of slow performance in a cloud application. This application is working behind a network load balancer with two VMs, and each VM has its own digital certificate configured. Currently, each VM is consuming 85% CPU on average. Due to cost restrictions, the administrator cannot scale vertically or horizontally in the environment. Which of the following actions should the administrator take to decrease the CPU utilization? (Choose two.)

- A. Configure the communication between the load balancer and the VMs to use a VPN.
- B. Move the digital certificate to the load balancer.
- C. Configure the communication between the load balancer and the VMs to use HTTP.
- D. Reissue digital certificates on the VMs.
- E. Configure the communication between the load balancer and the VMs to use HTTPS.
- F. Keep the digital certificates on the VMs.

**Answer:** BE

#### NEW QUESTION 71

A web server has been deployed in a public IaaS provider and has been assigned the public IP address of 72.135.10.100. Users are now reporting that when they browse to the website, they receive a message indicating the service is unavailable. The cloud administrator logs into the server, runs a netstat command, and notices the following relevant output:

```
TCP    17.3.130.3:0 72.135.10.100:5500 TIME_WAIT
TCP    17.3.130.3:0 72.135.10.100:5501 TIME_WAIT
TCP    17.3.130.3:0 72.135.10.100:5502 TIME_WAIT
TCP    17.3.130.3:0 72.135.10.100:5503 TIME_WAIT
TCP    17.3.130.3:0 72.135.10.100:5504 TIME_WAIT
```

Which of the following actions should the cloud administrator take to resolve the issue?

- A. Assign a new IP address of 192.168.100.10 to the web server
- B. Modify the firewall on 72.135.10.100 to allow only UDP
- C. Configure the WAF to filter requests from 17.3.130.3
- D. Update the gateway on the web server to use 72.135.10.1

**Answer:** D

#### NEW QUESTION 73

An organization purchased new servers with GPUs for render farms. The servers have limited CPU resources. Which of the following GPU configurations will be the MOST optimal for virtualizing this environment?

- A. Dedicated
- B. Shared
- C. Passthrough
- D. vGPU

**Answer:** D

#### NEW QUESTION 75

A company wants to check its infrastructure and application for security issues regularly. Which of the following should the company implement?



- A. Performance testing
- B. Penetration testing
- C. Vulnerability testing
- D. Regression testing

**Answer:** C

**NEW QUESTION 79**

The security team for a large corporation is investigating a data breach. The team members are all trying to do the same tasks but are interfering with each other's work.

Which of the following did the team MOST likely forget to implement?

- A. Incident type categories
- B. A calling tree
- C. Change management
- D. Roles and responsibilities

**Answer:** D

**NEW QUESTION 81**

A company wants to implement business continuity, and the cloud solution architect needs to design the correct solution.

Which of the following will provide the data to measure business continuity? (Choose two.)

- A. A service-level agreement
- B. Automation scripts
- C. Playbooks
- D. A network diagram
- E. A backup and restore
- F. A recovery time objective

**Answer:** AF

**NEW QUESTION 86**

A company needs to rehost its ERP system to complete a datacenter migration to the public cloud. The company has already migrated other systems and configured VPN connections.

Which of the following MOST likely needs to be analyzed before rehosting the ERP?

- A. Software
- B. Licensing
- C. Right-sizing
- D. The network

**Answer:** B

**NEW QUESTION 90**

A company has a cloud infrastructure service, and the cloud architect needs to set up a DR site. Which of the following should be configured in between the cloud environment and the DR site?

- A. Failback
- B. Playbook
- C. Zoning
- D. Replication

**Answer:** D

**NEW QUESTION 91**

A cloud administrator is reviewing a new application implementation document. The administrator needs to make sure all the known bugs and fixes are applied, and unwanted ports and services are disabled.

Which of the following techniques would BEST help the administrator assess these business requirements?

- A. Performance testing
- B. Usability testing
- C. Vulnerability testing
- D. Regression testing

**Answer:** C

**NEW QUESTION 96**

A company is currently running a website on site. However, because of a business requirement to reduce current RTO from 12 hours to one hour, and the RPO from one day to eight hours, the company is considering operating in a hybrid environment. The website uses mostly static files and a small relational database. Which of the following should the cloud architect implement to achieve the objective at the LOWEST cost possible?

- A. Implement a load-balanced environment in the cloud that is equivalent to the current on-premises setup and use DNS to shift the load from on premises to cloud.
- B. Implement backups to cloud storage and infrastructure as code to provision the environment automatically when the on-premises site is down
- C. Restore the data from the backups.
- D. Implement a website replica in the cloud with auto-scaling using the smallest possible footprint
- E. Use DNS to shift the load from on premises to the cloud.

- F. Implement a CDN that caches all requests with a higher TTL and deploy the IaaS instances manually in case of disaster.
- G. Upload the backup on demand to the cloud to restore on the new instances.

**Answer:** B

#### NEW QUESTION 98

Which of the following strategies will mitigate the risk of a zero-day vulnerability MOST efficiently?

- A. Using only open-source technologies
- B. Keeping all resources up to date
- C. Creating a standby environment with a different cloud provider
- D. Having a detailed incident response plan

**Answer:** D

#### NEW QUESTION 102

An organization suffered a critical failure of its primary datacenter and made the decision to switch to the DR site. After one week of using the DR site, the primary datacenter is now ready to resume operations.

Which of the following is the MOST efficient way to bring the block storage in the primary datacenter up to date with the DR site?

- A. Set up replication.
- B. Copy the data across both sites.
- C. Restore incremental backups.
- D. Restore full backups.

**Answer:** A

#### NEW QUESTION 103

A systems administrator is building a new virtualization cluster. The cluster consists of five virtual hosts, which each have flash and spinning disks. This storage is shared among all the virtual hosts, where a virtual machine running on one host may store data on another host. This is an example of:

- A. a storage area network
- B. a network file system
- C. hyperconverged storage
- D. thick-provisioned disks

**Answer:** A

#### NEW QUESTION 105

After a hardware upgrade on a private cloud system, the systems administrator notices a considerable drop in network performance. Which of the following is MOST likely the cause?

- A. The driver
- B. The memory
- C. The cluster placement
- D. The CPU

**Answer:** C

#### NEW QUESTION 109

A systems administrator is configuring RAID for a new server. This server will host files for users and replicate to an identical server. While redundancy is necessary, the most important need is to maximize storage.

Which of the following RAID types should the administrator choose?

- A. 5
- B. 6
- C. 10
- D. 50

**Answer:** C

#### NEW QUESTION 110

A company needs to access the cloud administration console using its corporate identity. Which of the following actions would MOST likely meet the requirements?

- A. Implement SSH key-based authentication.
- B. Implement cloud authentication with local LDAP.
- C. Implement multifactor authentication.
- D. Implement client-based certificate authentication.

**Answer:** D

#### NEW QUESTION 114

A cloud administrator is designing a multiregion network within an IaaS provider. The business requirements for configuring the network are as follows:

- Use private networking in and between the multisites for data replication.



➤ Use low latency to avoid performance issues.

Which of the following solutions should the network administrator use within the IaaS provider to connect multiregions?

- A. Peering
- B. Gateways
- C. VPN
- D. Hub and spoke

**Answer: C**

#### NEW QUESTION 118

A cloud administrator recently noticed that a number of files stored at a SaaS provider's file-sharing service were deleted. As part of the root cause analysis, the administrator noticed the parent folder permissions were modified last week. The administrator then used a test user account and determined the permissions on the files allowed everyone to have write access.

Which of the following is the best step for the administrator to take NEXT?

- A. Identify the changes to the file-sharing service and document
- B. Acquire a third-party DLP solution to implement and manage access
- C. Test the current access permissions to the file-sharing service
- D. Define and configure the proper permissions for the file-sharing service

**Answer: D**

#### NEW QUESTION 123

An organization has two businesses that are developing different software products. They are using a single cloud provider with multiple IaaS instances. The organization identifies that the tracking of costs for each business are inaccurate.

Which of the following is the BEST method for resolving this issue?

- A. Perform segregation of the VLAN and capture egress and ingress values of each network interface
- B. Tag each server with a dedicated cost and sum them based on the businesses
- C. Split the total monthly invoice equally between the businesses
- D. Create a dedicated subscription for the businesses to manage the costs

**Answer: B**

#### NEW QUESTION 124

A company has decided to scale its e-commerce application from its corporate datacenter to a commercial cloud provider to meet an anticipated increase in demand during an upcoming holiday.

The majority of the application load takes place on the application server under normal conditions. For this reason, the company decides to deploy additional application servers into a commercial cloud provider using the on-premises orchestration engine that installs and configures common software and network configurations.

The remote computing environment is connected to the on-premises datacenter via a site-to-site IPSec tunnel. The external DNS provider has been configured to use weighted round-robin routing to load balance connections from the Internet.

During testing, the company discovers that only 20% of connections completed successfully. INSTRUCTIONS

Review the network architecture and supporting documents and fulfill these requirements:

Part 1:

Analyze the configuration of the following components:

DNS, Firewall 1, Firewall 2, Router 1, Router 2, VPN and Orchestrator Server.

Identify the problematic device(s).

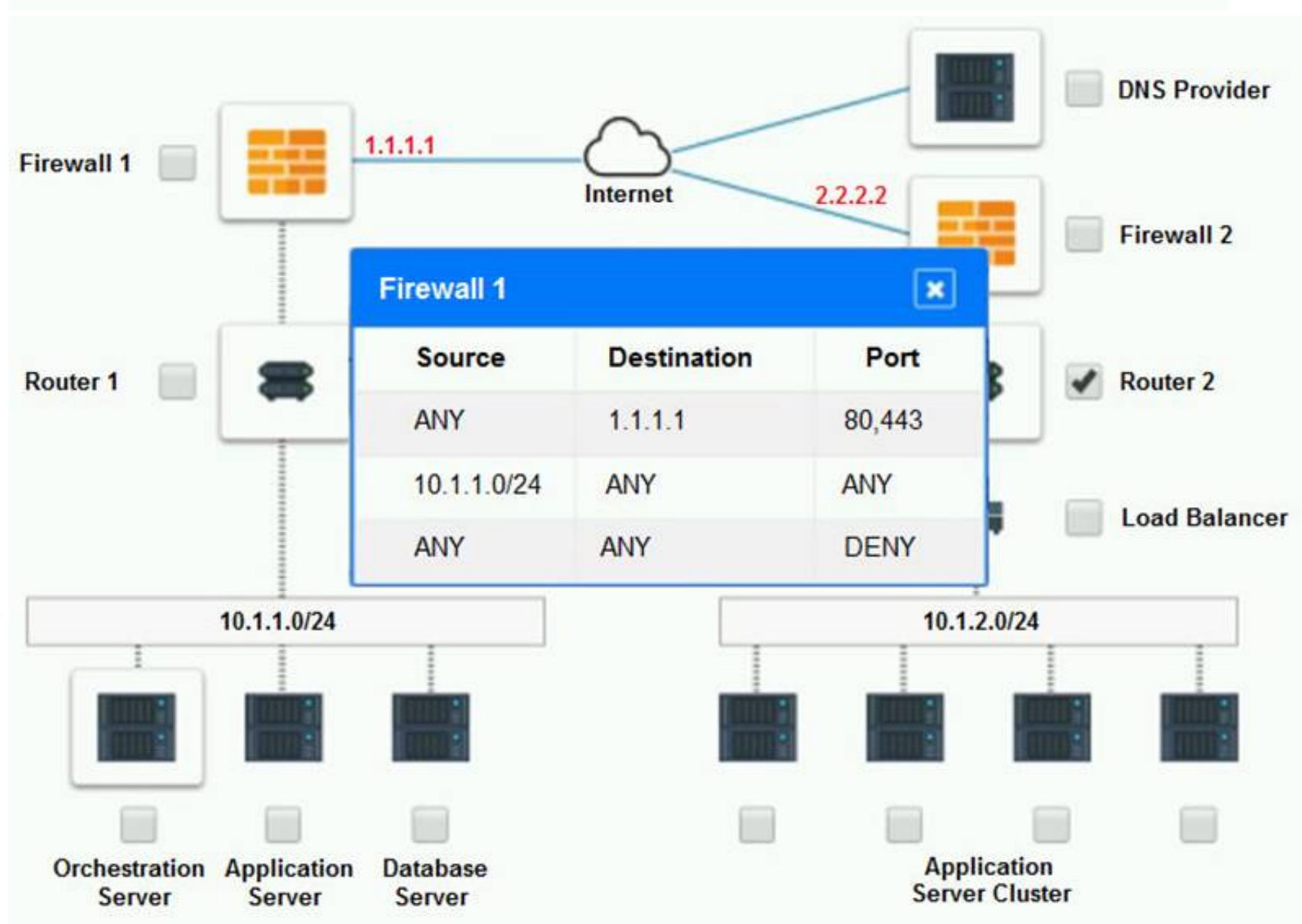
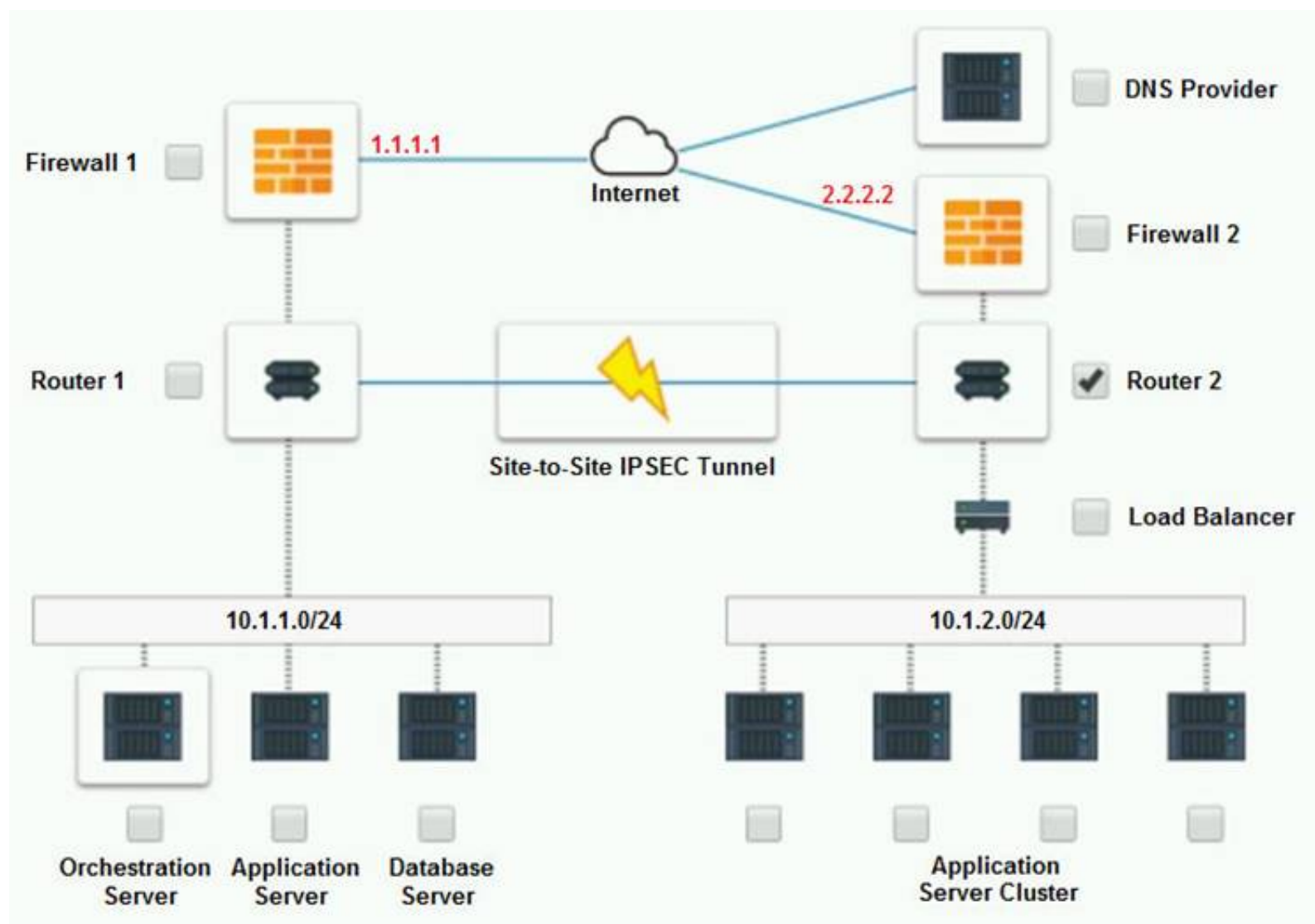
Part 2:

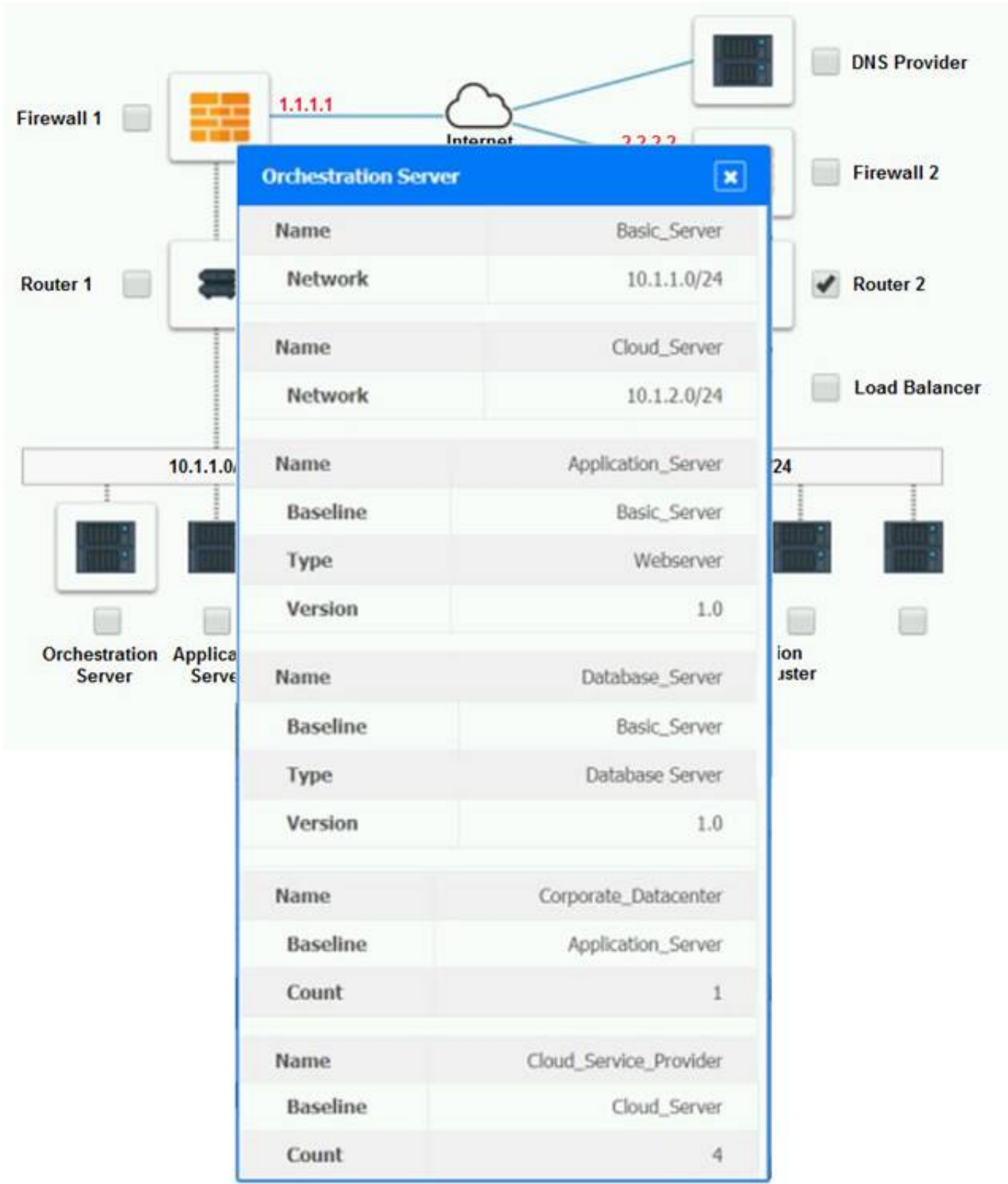
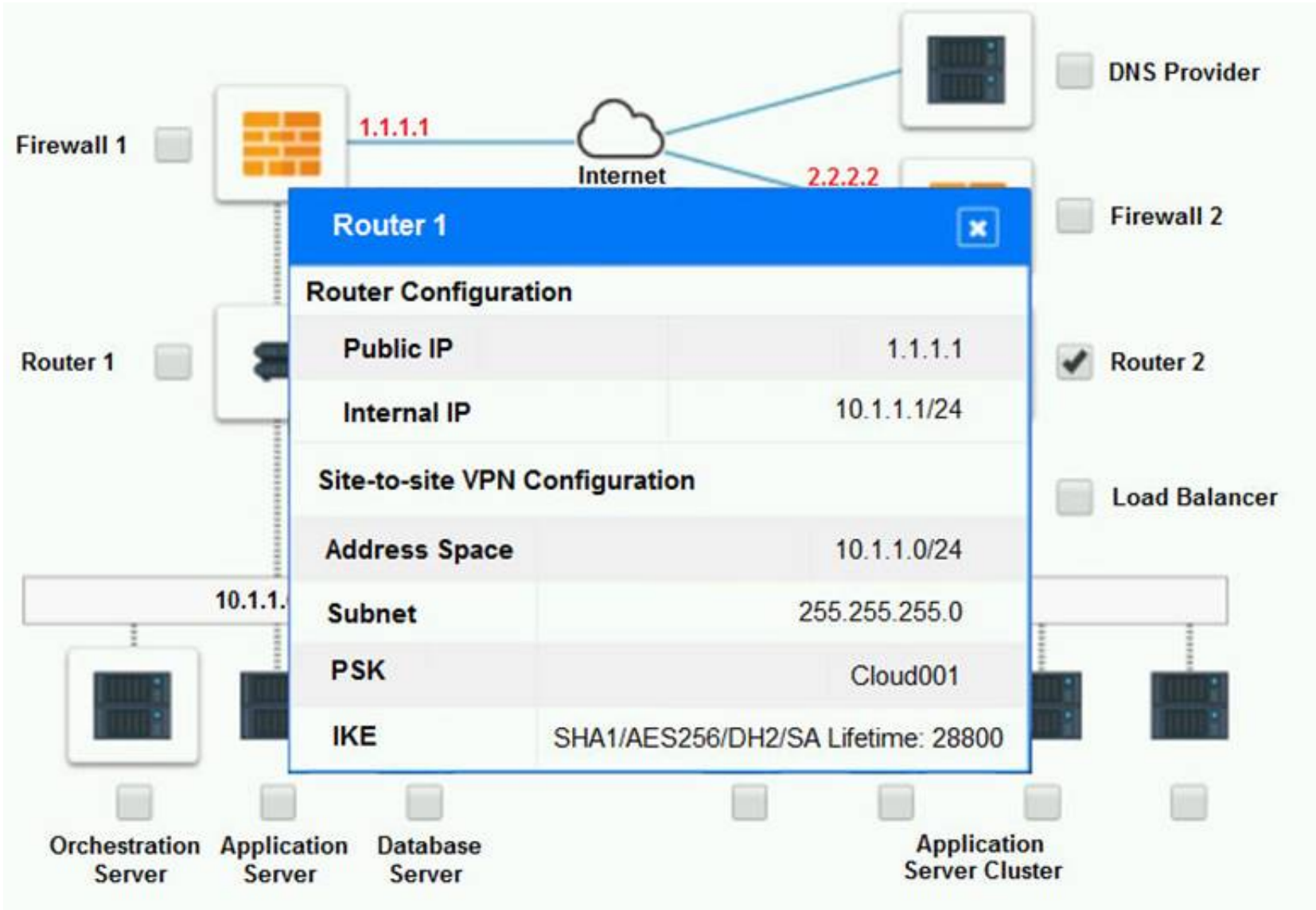
Identify the correct options to provide adequate configuration for hybrid cloud architecture.

If at any time you would like to bring back the initial state of the simulation, please click the Reset All button.

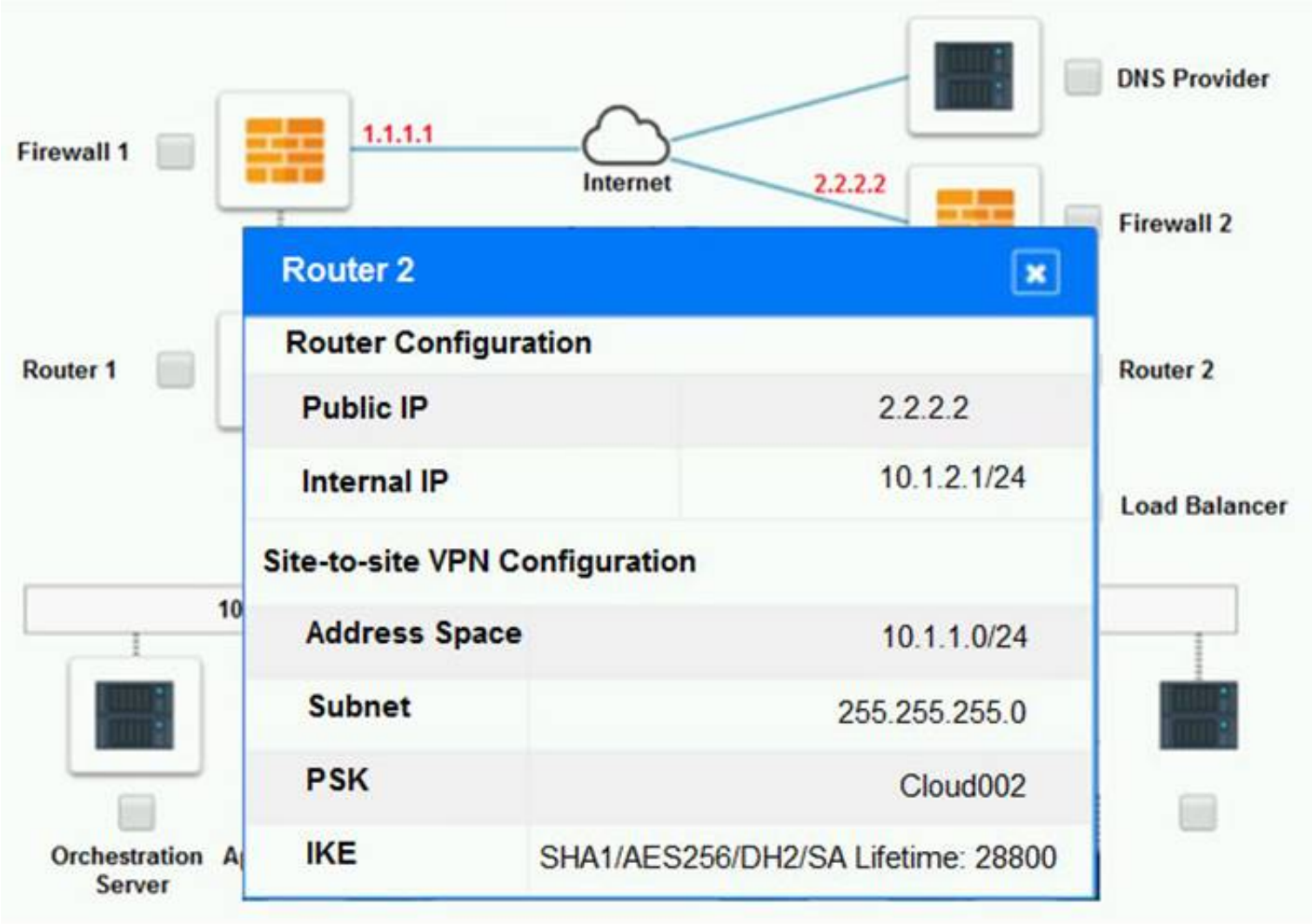
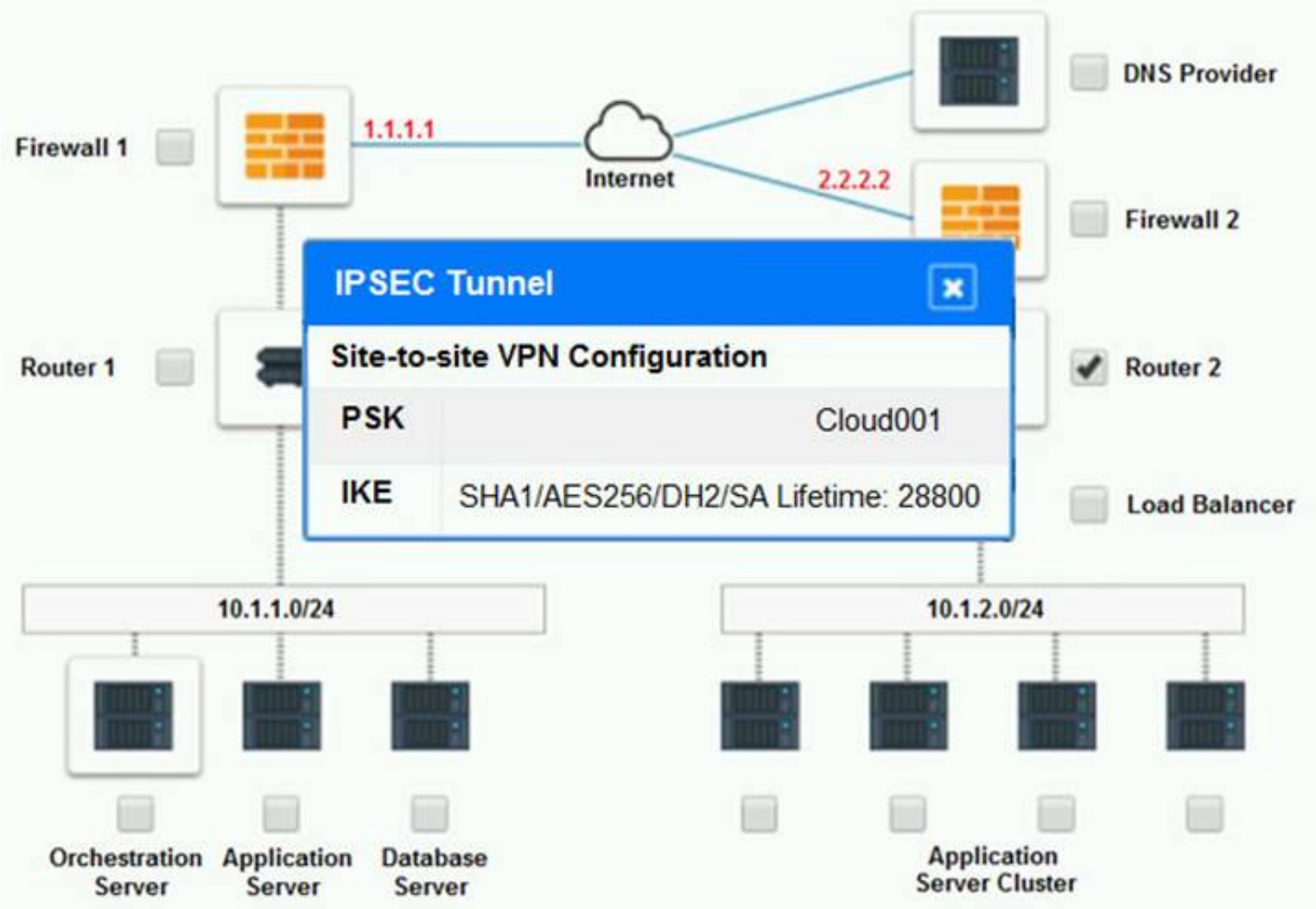
Part 1:

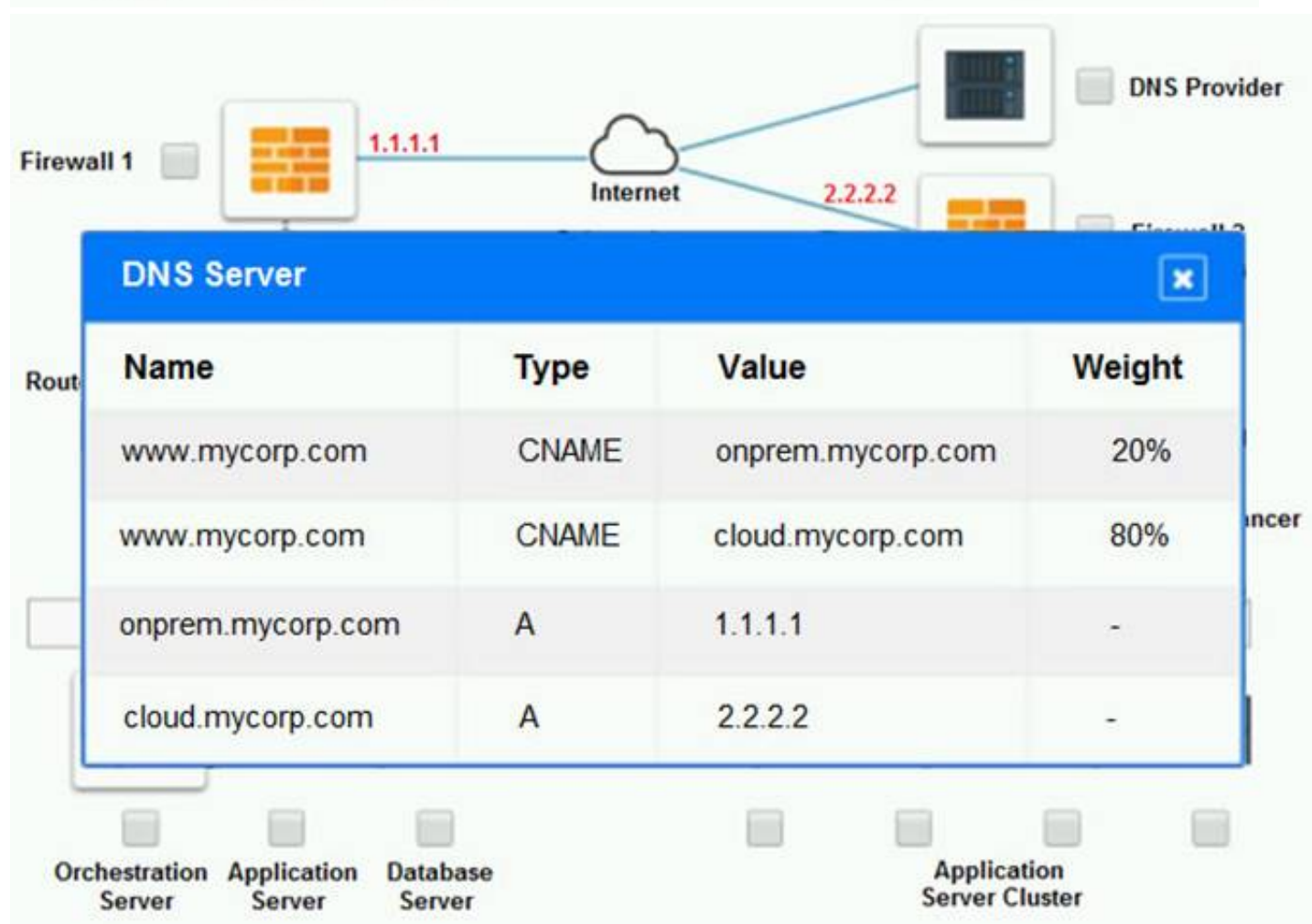
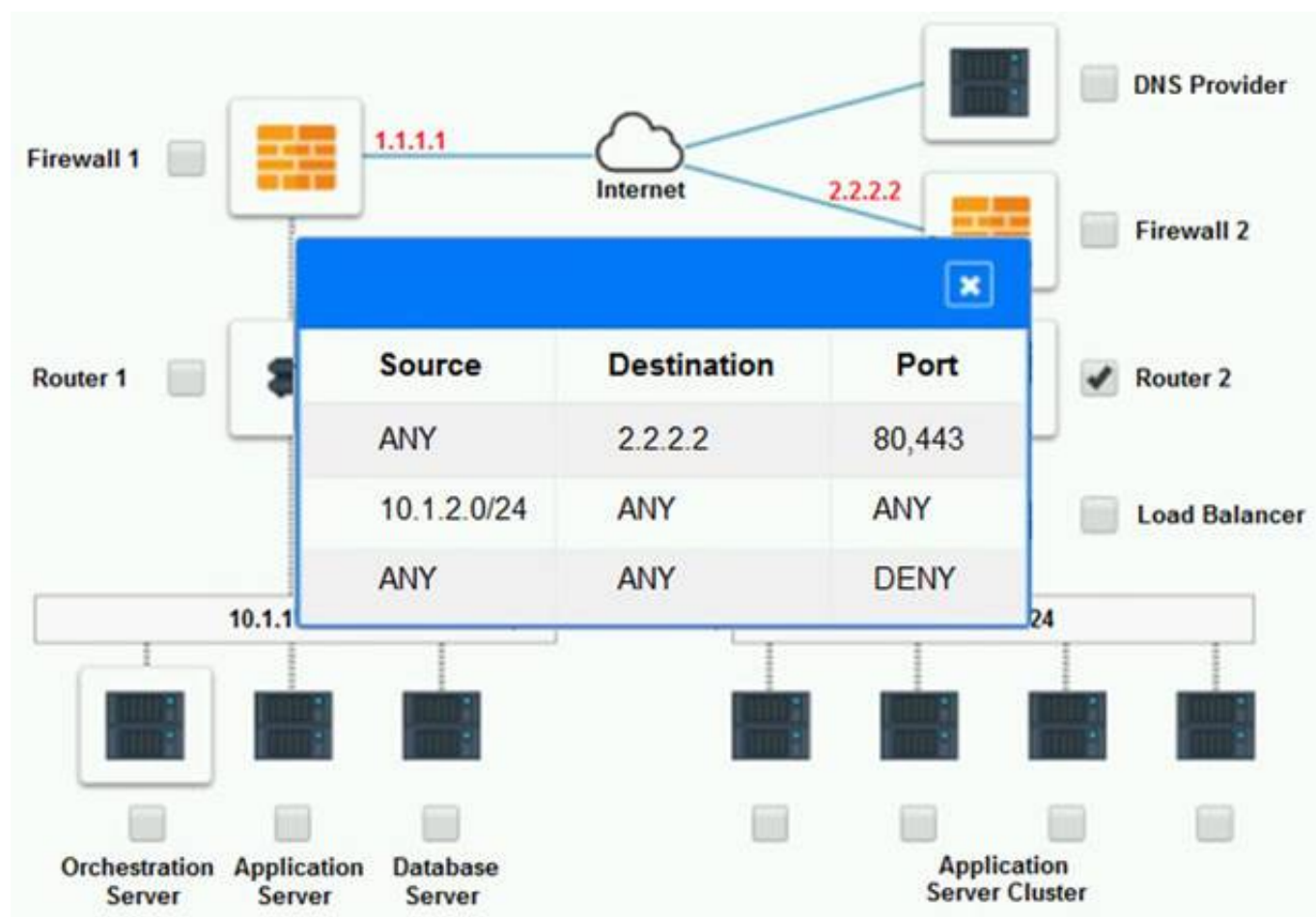
Cloud Hybrid Network Diagram











Part 2:

Only select a maximum of TWO options from the multiple choice question

- ☐ Deploy a Replica of the Database Server in the Cloud Provider.
- ☐ Update the PSK (Pre-shared key) in Router 2.
- ☐ Update the A record on the DNS from 2.2.2.2 to 1.1.1.1.
- ☐ Promote deny All to allow All in Firewall 1 and Firewall 2.
- ☐ Change the Address Space on Router 2.
- ☐ Change internal IP Address of Router 1.
- ☐ Reverse the Weight property in the two CNAME records on the DNS.
- ☐ Add the Application Server at on-premises to the Load Balancer.

A. Mastered  
 B. Not Mastered

**Answer: A**

**Explanation:**

See explanation below.

- Change the Address Space on Router2
- Update the PSK (Pre-shared key in Router2)

**NEW QUESTION 128**

A systems administrator swapped a failed hard drive on a server with a RAID 5 array. During the RAID resynchronization, a second hard drive failed. Which of the following actions will make the server fully operational?

- A. Restart the RAID resynchronization process
- B. Perform a P2V migration of the server
- C. Swap the failed hard drive with a fresh one
- D. Restore the server from backup

**Answer:** A

**NEW QUESTION 132**

A systems administrator is informed that a database server containing PHI and PII is unencrypted. The environment does not support VM encryption, nor does it have a key management system. The server needs to be able to be rebooted for patching without manual intervention. Which of the following will BEST resolve this issue?

- A. Ensure all database queries are encrypted
- B. Create an IPSec tunnel between the database server and its clients
- C. Enable protocol encryption between the storage and the hypervisor
- D. Enable volume encryption on the storage
- E. Enable OS encryption

**Answer:** C

**NEW QUESTION 136**

A company is utilizing a private cloud solution that is hosted within its datacenter. The company wants to launch a new business application, which requires the resources below:

Maximum concurrent sessions	Number of nodes required	Required per-node vCPU	Required per-node RAM
1,000	2	4	32
5,000	4	6	64
10,000	6	8	64
25,000	8	8	128

The current private cloud has 30 vCPUs and 512GB RAM available. The company is looking for a quick solution to launch this application, with expected maximum sessions to be close to 24,000 at launch and an average of approximately 5,000 sessions.

Which of the following solutions would help the company accommodate the new workload in the SHORTEST amount of time and with the maximum financial benefits?

- A. Configure auto-scaling within the private cloud
- B. Set up cloud bursting for the additional resources
- C. Migrate all workloads to a public cloud provider
- D. Add more capacity to the private cloud

**Answer:** D

**NEW QUESTION 141**

The QA team is testing a newly implemented clinical trial management (CTM) SaaS application that uses a business intelligence application for reporting. The UAT users were instructed to use HTTP and HTTPS.

Refer to the application dataflow:

- 1A – The end user accesses the application through a web browser to enter and view clinical data.
- 2A – The CTM application server reads/writes data to/from the database server.
- 1B – The end user accesses the application through a web browser to run reports on clinical data.
- 2B – The CTM application server makes a SOAP call on a non-privileged port to the BI application server.
- 3B – The BI application server gets the data from the database server and presents it to the CTM application server.

When

UAT users try to access the application using <https://ctm.app.com> or <http://ctm.app.com>, they get a message stating: “Browser cannot display the webpage.” The QA team has raised a ticket to troubleshoot the issue.

**INSTRUCTIONS**

You are a cloud engineer who is tasked with reviewing the firewall rules as well as virtual network settings. You should ensure the firewall rules are allowing only the traffic based on the dataflow.

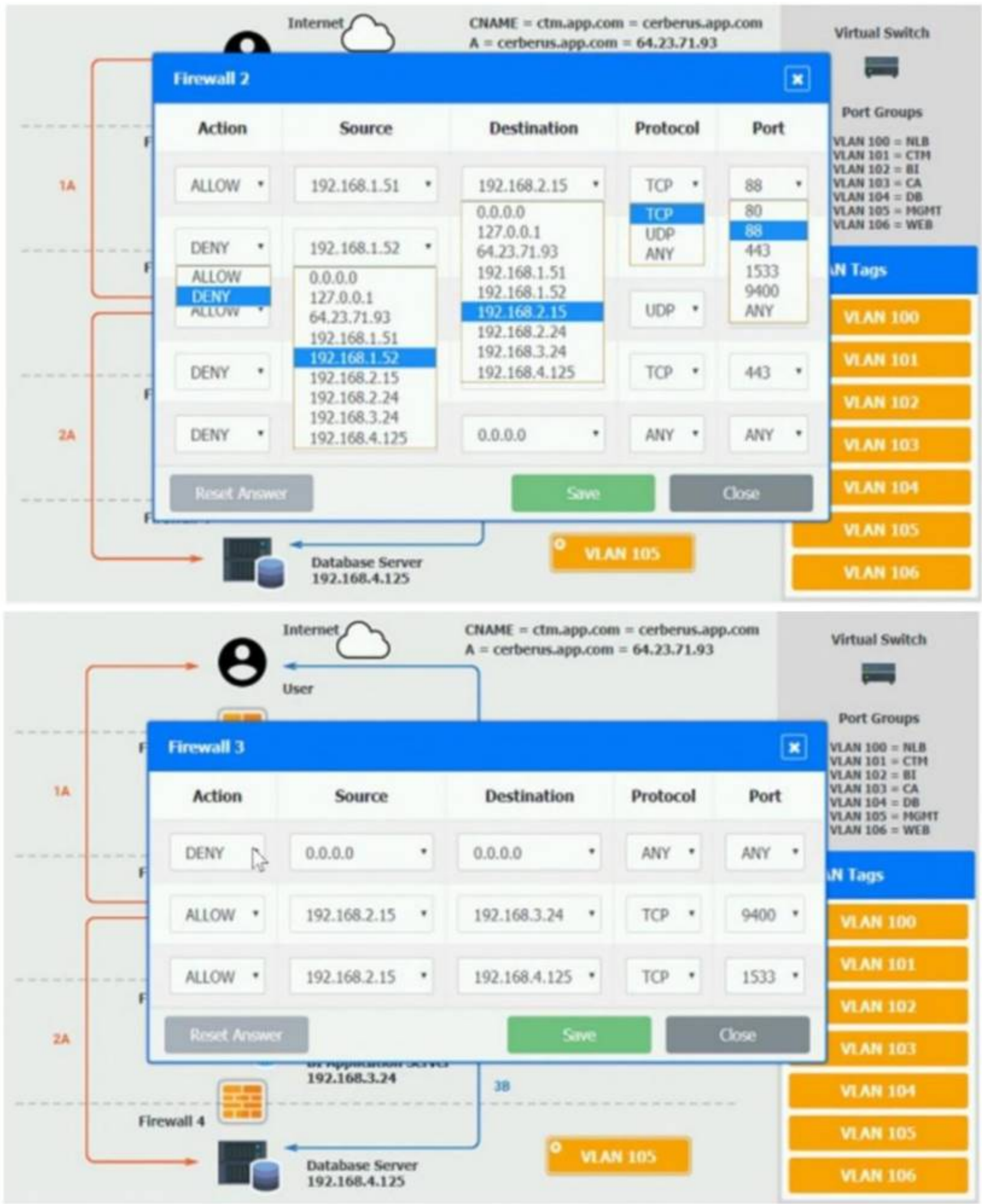
You have already verified the external DNS resolution and NAT are working.

Verify and appropriately configure the VLAN assignments and ACLs. Drag and drop the appropriate VLANs to each tier from the VLAN Tags table. Click on each Firewall to change ACLs as needed.

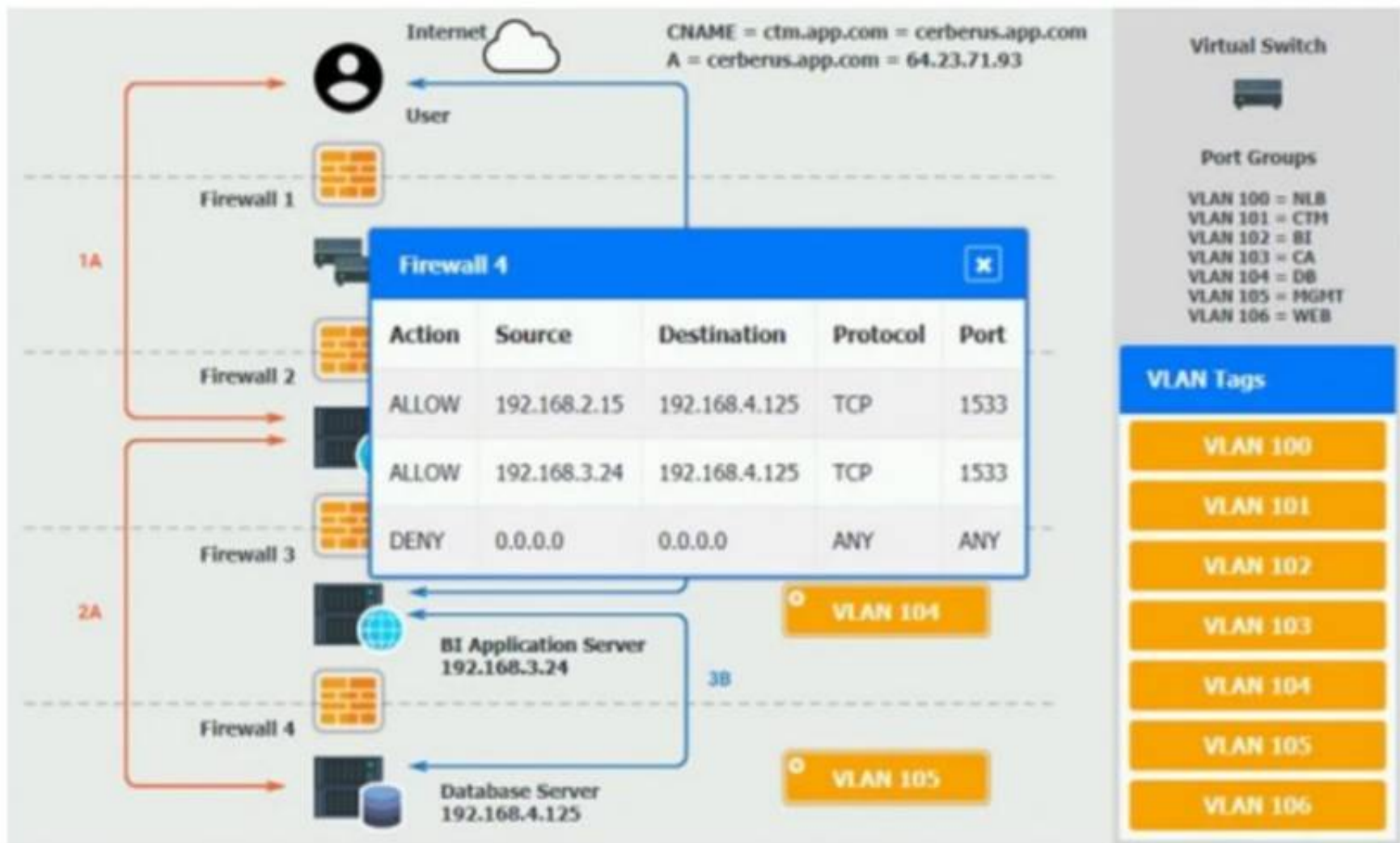
If at any time you would like to bring back the initial state of the simulation, please click the Reset All button.











- A. Mastered
- B. Not Mastered

**Answer:** A

**Explanation:**

On firewall 3, change the DENY 0.0.0.0 entry to rule 3 not rule 1.

**NEW QUESTION 144**

A developer is no longer able to access a public cloud API deployment, which was working ten minutes prior. Which of the following is MOST likely the cause?

- A. API provider rate limiting
- B. Invalid API token
- C. Depleted network bandwidth
- D. Invalid API request

**Answer:** D

**NEW QUESTION 147**

A systems administrator is trying to reduce storage consumption. Which of the following file types would benefit the MOST from compression?

- A. System files
- B. User backups
- C. Relational database
- D. Mail database

**Answer:** B

**NEW QUESTION 148**

Users are experiencing slow response times from an intranet website that is hosted on a cloud platform. There is a site-to-site VPN connection to the cloud provider over a link of 100Mbps.

Which of the following solutions will resolve the issue the FASTEST?

- A. Change the connection to point-to-site VPN
- B. Order a direct link to the provider
- C. Enable quality of service
- D. Upgrade the link to 200Mbps

**Answer:** C

**NEW QUESTION 152**

A systems administrator is deploying a solution that requires a virtual network in a private cloud environment. The solution design requires the virtual network to transport multiple payload types.

Which of the following network virtualization options would BEST satisfy the requirement?

- A. VXLAN

- B. STT
- C. NVGRE
- D. GENEVE

**Answer:** C

**NEW QUESTION 154**

A cloud administrator is building a new VM for machine-learning training. The developer requesting the VM has stated that the machine will need a full GPU dedicated to it.

Which of the following configuration options would BEST meet this requirement?

- A. Virtual GPU
- B. External GPU
- C. Passthrough GPU
- D. Shared GPU

**Answer:** C

**NEW QUESTION 158**

A systems administrator notices that a piece of networking equipment is about to reach its end of support. Which of the following actions should the administrator recommend?

- A. Update the firmware
- B. Migrate the equipment to the cloud
- C. Update the OS
- D. Replace the equipment

**Answer:** A

**NEW QUESTION 162**

A company is doing a cloud-to-cloud migration to lower costs. A systems administrator has to plan the migration accordingly.

Which of the following considerations is MOST important for a successful, future-proof, and low-cost migration?

- A. Tier pricing
- B. Licensing
- C. Estimated consumption
- D. Feature compatibility

**Answer:** D

**NEW QUESTION 164**

A company recently subscribed to a SaaS collaboration service for its business users. The company also has an on-premises collaboration solution and would like users to have a seamless experience regardless of the collaboration solution being used.

Which of the following should the administrator implement?

- A. LDAP
- B. WAF
- C. VDI
- D. SSO

**Answer:** A

**NEW QUESTION 167**

Which of the following cloud deployment models allows a company to have full control over its IT infrastructure?

- A. Private
- B. Cloud within a cloud
- C. Hybrid
- D. Public

**Answer:** A

**NEW QUESTION 169**

A company has an in-house-developed application. The administrator wants to utilize cloud services for additional peak usage workloads. The application has a very unique stack of dependencies. Which of the following cloud service subscription types would BEST meet these requirements?

- A. PaaS
- B. SaaS
- C. DBaaS
- D. IaaS

**Answer:** D

**NEW QUESTION 170**

A software development manager is looking for a solution that will allow a team of developers to work in isolated environments that can be spun up and torn down

quickly.  
Which of the following is the MOST appropriate solution?

- A. Containers
- B. File subscriptions
- C. Ballooning
- D. Software-defined storage

**Answer:** A

#### NEW QUESTION 171

A cloud administrator is setting up a DR site on a different zone of the same CSP. The application servers are replicated using the VM replication, and the database replication is set up using log shipping. Upon testing the DR site, the application servers are unable to access the database servers. The administrator has verified the systems are running and are accessible from the CSP portal.  
Which of the following should the administrator do to fix this issue?

- A. Change the database application IP
- B. Create a database cluster between the primary site and the DR site
- C. Update the connection string
- D. Edit the DNS record at the DR site for the application servers

**Answer:** C

#### NEW QUESTION 174

A systems administrator is configuring network management but is concerned about confidentiality. Which of the following should the administrator configure to address this concern?

- A. Community strings
- B. IPSec tunnels
- C. ACLs

**Answer:** C

#### NEW QUESTION 179

A company developed a product using a cloud provider's PaaS platform and many of the platform-based components within the application environment. Which of the following would the company MOST likely be concerned about when utilizing a multicloud strategy or migrating to another cloud provider?

- A. Licensing
- B. Authentication providers
- C. Service-level agreement
- D. Vendor lock-in

**Answer:** D

#### NEW QUESTION 183

A systems administrator is configuring a storage array.  
Which of the following should the administrator configure to set up mirroring on this array?

- A. RAID 0
- B. RAID 1
- C. RAID 5
- D. RAID 6

**Answer:** B

#### NEW QUESTION 185

A company needs a solution to find content in images. Which of the following technologies, when used in conjunction with cloud services, would facilitate the BEST solution?

- A. Internet of Things
- B. Digital transformation
- C. Artificial intelligence
- D. DNS over TLS

**Answer:** C

#### NEW QUESTION 186

.....

## Thank You for Trying Our Product

### We offer two products:

1st - We have Practice Tests Software with Actual Exam Questions

2nd - Questions and Answers in PDF Format

### CV0-003 Practice Exam Features:

- \* CV0-003 Questions and Answers Updated Frequently
- \* CV0-003 Practice Questions Verified by Expert Senior Certified Staff
- \* CV0-003 Most Realistic Questions that Guarantee you a Pass on Your FirstTry
- \* CV0-003 Practice Test Questions in Multiple Choice Formats and Updatesfor 1 Year

**100% Actual & Verified — Instant Download, Please Click**  
**[Order The CV0-003 Practice Test Here](#)**