

Cisco

Exam Questions 200-901

Developing Applications and Automating Workflows using Cisco Core Platforms (DEVASC)



NEW QUESTION 1

- (Exam Topic 3)

Drag and drop the code from the bottom onto the box where the code is missing to construct a Python script that calls a REST API request. The Python script retrieves a list of tasks from a to-do list for effective project management purposes. Not all options are used.

```
import requests

response = .get('https://todolist.example.com/tasks/')

if .status_code != 200:
    raise ApiError('GET /tasks/ {}'.format(response.))

for item in response.json():
    print('{} {}'.format(item['id'], ['summary']))
```

item	response
requests	get()
status_code	status

- A. Mastered
- B. Not Mastered

Answer: A

Explanation:

```
import requests

response = requests.get('https://todolist.example.com/tasks/')

if response.status_code != 200:
    raise ApiError('GET /tasks/ {}'.format(response.status_code))

for item in response.json():
    print('{} {}'.format(item['id'], item['summary']))
```

item	response
requests	get()
status_code	status

NEW QUESTION 2

- (Exam Topic 3)

Which two commands download and execute an Apache web server container in Docker with a port binding 8080 in the container to 80 on the host? (Choose two.)

- A. docker pull apache
- B. docker run -p 8080:80 httpd
- C. docker run -p 80:8080 httpd
- D. docker pull httpd
- E. docker pull https

Answer: CD

NEW QUESTION 3

- (Exam Topic 3)

A developer pushes an application to production. The application receives a webhook over HTTPS without a secret. The webhook information contains credentials to service in cleartext. When the information is received, it is stored in the database with an SHA-256 hash. Credentials to the database are accessed at runtime through the use of a vault service. While troubleshooting, the developer sets the logging to debug to view the message from the webhook. What is the security issue in this scenario?

- A. Database credentials should be accessed by using environment variables defined at runtime.
- B. During the transport of webhook messages, the credentials could be unencrypted and leaked.
- C. During logging, debugging should be disabled for the webhook message.
- D. Hashing the credentials in the database is not secure enough; the credentials should be encrypted.

Answer: B

NEW QUESTION 4

- (Exam Topic 3)

```
import os
import requests

# username and password

API_USER_NAME = "devnetuser"
API_PASSWORD = os.environ['API_PASSWORD']

requests.get('https://api.cisco.com/end-service', auth=(API_USER_NAME, API_PASSWORD))
```

Refer to the exhibit. An engineer must authorize a REST API call. The API password is "Cisco123!". Which Bash command must be placed in the code to authorize the call?

- A. mkdir API_PASSWORD=Cisco123!
- B. set API_PASSWORD=Cisco123!
- C. cp API_PASSWORD=Cisco123!
- D. export API_PASSWORD=Cisco123!

Answer: D

NEW QUESTION 5

- (Exam Topic 3)

Which IP service is used to monitor the performance of network devices?

- A. SNMP
- B. DHCP
- C. DNS
- D. NTP

Answer: A

NEW QUESTION 6

- (Exam Topic 3)

What is a benefit of version control?

- A. prevents two users from working on the same file
- B. keeps track of all changes to the files
- C. prevents the sharing of files
- D. keeps the list of data types used in the files

Answer: B

NEW QUESTION 7

- (Exam Topic 3)

A developer is developing a web application that uses username and password to authenticate to the next service. The user credentials must be available at any time in the application. The developer must choose and implement a secure method of storing the authentication credentials that are used in the automation code. Which password handling method must be used to minimize the security risk?

- A. Store the username and password in a separate configuration file.
- B. Store the username and password in a vault.
- C. Store the passwords in a dictionary.
- D. Store the username and password in code.

Answer: B

NEW QUESTION 8

- (Exam Topic 3)

What is a benefit of using a code review process in application development?

- A. accelerates the deployment of new features in an existing application
- B. provides version control during code development
- C. enables the quick deployment of new code
- D. eliminates common mistakes during development

Answer: D

NEW QUESTION 9

- (Exam Topic 3)

```
1 import requests
2 from requests.auth import HTTPBasicAuth
3 BASE_URL = 'https://<IP ADDRESS or FQDN>'
4 AUTH_URL = '/dna/system/api/v1/auth/token'
5 TOKEN = '<TOKEN>'
6
7 headers = {'X-Auth-Token': TOKEN, 'Content-Type': 'application/json'}
8
9 DEVICES_COUNT_URL = '/dna/intent/api/v1/network-device/count'
10 DEVICES_URL = '/dna/intent/api/v1/network-device'
11 DEVICES_BY_ID_URL = '/dna/intent/api/v1/network-device/'
12
13 def devices_func(headers):
14     response = requests.get(BASE_URL + DEVICES_COUNT_URL,
15                             headers = headers, verify=False)
16     return response.json()['response']
17
18 def devices_test(headers, query_string_params):
19     response = requests.get(BASE_URL + DEVICES_URL, headers = headers,
20                             params = query_string_params, verify=False)
21     return response.json()['response']
22
23 def devices_info(headers, device_id):
24     response = requests.get(BASE_URL + DEVICES_BY_ID_URL + device_id,
25                             headers = headers, verify=False)
26     return response.json()['response']
27
28 print(devices_func(headers))
29 print(devices_test(headers, {}))
30 print(devices_test(headers, {'hostname': 'CSR1Kv-01.devnet.local'}))
31 response = devices_test(headers, {'platformId': 'C9500-40X'})
32 print(devices_info(headers, response[0]['id']))
```

Refer to the exhibit. An engineer prepares a script to automate workflow by using Cisco DNA Center APIs to display:

total count of devices

list of the network devices

information of one device with a hostname filter

What is displayed in the final step after the Python script is executed?

- A. information about a device of type C9500-40x.
- B. filtered results by the hostname and the platformId C9500-40X
- C. information about the test devices
- D. list of devices with platformId C9500-40x

Answer: B

NEW QUESTION 10

- (Exam Topic 3)

A group of software developers wants to improve its collaboration with the operations team. The group wants to deliver release-ready code that merges code changes back to the main branch and runs the automated testing as often as possible. Which DevOps concept does this scenario represent?

- A. continuous delivery
- B. version control
- C. continuous integration
- D. continuous deployment

Answer: C

NEW QUESTION 10

- (Exam Topic 3)

CISCO INTERSIGHT

Introduction

- Create Server Profile and Re...
- POST Create Server VMedia Policy
- GET Retrieve Server VMedia Policy...
- POST Create Server Boot Policy
- GET Retrieve Server Boot Policy by...
- POST Create Server NTP Policy
- GET Retrieve NTP Policy by Mold
- POST Create 'server-01' Server Profi...
- GET Retrieve 'server-01' Server Pr...
- POST Create 'server-02' Server Profi...
- GET Retrieve 'server-02' Server Pr...
- POST Update vmedia/Profiles Profi...
- POST Update Boot/PrecisionPolicie...
- POST Update NTP/Policies Profiles ...
- GET Retrieve Server RackUnit Res...

Create Server Profile and Resources

POST Create Server VMedia Policy

<https://www.intersight.com/api/v1/vmedia/Policies>

HEADERS

Accept	application/json
Authorization	Signature {{httpsig}}
Digest	{{computed-digest}}
Date	{{current-date}}
Content-Type	application/json

Refer to the exhibit. Drag and drop the code from the bottom onto the box where the code is missing to construct a Python script by using the Cisco SDK. Not all options are used.

```

import sys, json, argparse
from intersight.intersight_api_client import IntersightApiClient
from intersight.apis import asset_device_registration_api, asset_device_claim_api

result = dict(changed=False)

parser = argparse.ArgumentParser()
parser.add_argument('-a', '--api_params', default='intersight_api_params.json')
parser.add_argument('-t', '--target_host', dest='hostname', required=True)
args = parser.parse_args()
with open(args.api_params, 'r') as api_file:
    intersight_api_params = json.load( )
api_instance = IntersightApiClient(
    host=intersight_api_params[' '],
    private_key=intersight_api_params['api_private_key_file'],
    api_key_id=intersight_api_params['api_key_id'],
)
api_handle = asset_device_registration_api.AssetDeviceRegistrationApi(api_instance)

kwargs = dict(filter="ConnectionStatus eq 'Connected'")
= api_handle.asset_device_registrations_get(** )
for device in api_result.results:
    if device.device_ip_address[0] == args.hostname:
        api_handle = asset_device_claim_api.AssetDeviceClaimApi(api_instance)
        api_handle.asset_device_claims_moid_delete(moid=device.device_claim.moid)
        result['changed'] = True
        break

```

kwargs

args

api_file

api_key

api_base_uri

result

api_result

- A. Mastered
 B. Not Mastered

Answer: A

Explanation:

```
import sys, json, argparse
from intersight.intersight_api_client import IntersightApiClient
from intersight.apis import asset_device_registration_api, asset_device_claim_api

result = dict(changed=False)

parser = argparse.ArgumentParser()
parser.add_argument('-a', '--api_params', default='intersight_api_params.json')
parser.add_argument('-t', '--target_host', dest='hostname', required=True)
args = parser.parse_args()
with open(args.api_params, 'r') as api_file:
    intersight_api_params = json.load( api_file )
api_instance = IntersightApiClient(
    host=intersight_api_params[' api_base_uri '],
    private_key=intersight_api_params['api_private_key_file'],
    api_key_id=intersight_api_params['api_key_id'],
)
api_handle = asset_device_registration_api.AssetDeviceRegistrationApi(api_instance)

kwargs = dict(filter="ConnectionStatus eq 'Connected'")
result = api_handle.asset_device_registrations_get(** kwargs )
for device in api_result.results:
    if device.device_ip_address[0] == args.hostname:
        api_handle = asset_device_claim_api.AssetDeviceClaimApi(api_instance)
        api_handle.asset_device_claims_moid_delete(moid=device.device_claim.moid)
        result['changed'] = True
        break
```

kwargs

args

api_file

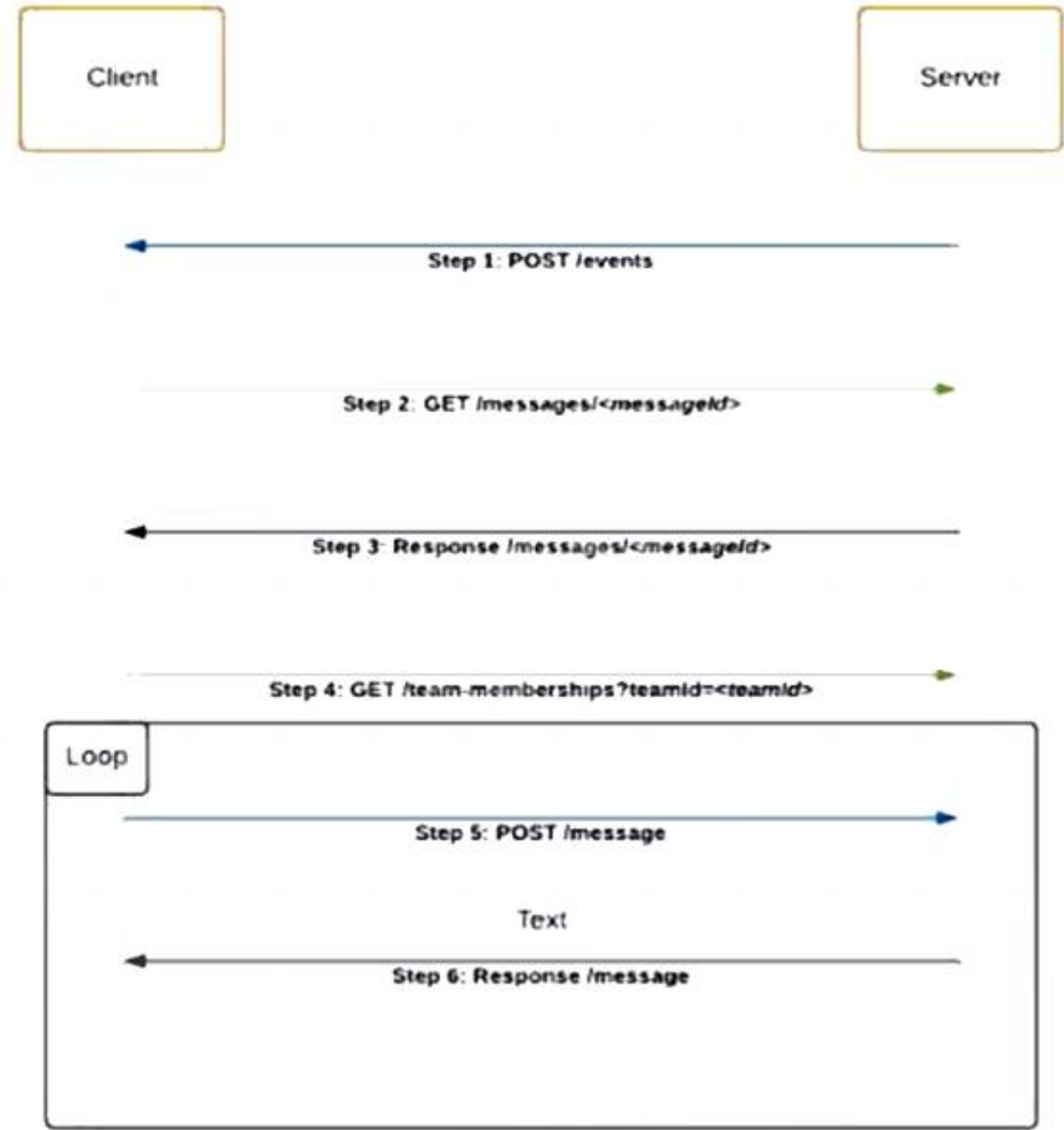
api_key

api_base_uri

result

api_result

NEW QUESTION 11
 - (Exam Topic 3)



Refer to the exhibit. Which code snippet represents the sequence.

A.


```
@flask_app.route('/events', methods=['POST'])
def webex_teams_webhook_events():
    json_data = request.json['data']
    response = requests.get(MESSAGE_URL +
    json_data['id'], headers=headers)
    if response.json()['text'] == 'Alert':
        response = requests.get(Team_MEMBERSHIPS_URL,
        headers=headers, params=params)
        for info in response.json()['items']:
            data = {'personId': info['personId'], 'text':
            'Alert'}
            response = requests.post(MESSAGES_URL,
            headers=headers, params=params)
```

B. @flask_app.route('/events', methods=['POST'])

```
def webex_teams_webhook_events():
    json_data = request.json['data']
    if response.json()['text'] == 'Alert':
        response = requests.get(MESSAGE_URL +
        json_data['id'], headers=headers)
        response = requests.get(Team_MEMBERSHIPS_URL,
        headers=headers, params=params)
        for info in response.json()['items']:
            data = {'personId': info['personId'],
            'text': 'Alert'}
            response = requests.post(MESSAGES_URL,
            headers=headers, params=params)
```

C. @flask_app.route('/events', methods=['POST'])

```
def webex_teams_webhook_events():
    json_data = request.json['data']
    response = requests.post(MESSAGE_URL +
    json_data['id'], headers=headers)
    if response.json()['text'] == 'Alert':
        for info in response.json()['items']:
            response = requests.get(Team_MEMBERSHIPS_URL,
            headers=headers, params=params)
            data = {'personId': info['personId'], 'text':
            'Alert'}
            response = requests.get(MESSAGES_URL,
            headers=headers, params=params)
```

D. @flask_app.route('/events', methods=['POST'])

```
def webex_teams_webhook_events():
    json_data = request.json['data']
    response = requests.get(Team_MEMBERSHIPS_URL,
    headers=headers, params=params)
    if response.json()['text'] == 'Alert':
        response = requests.get(MESSAGE_URL +
        json_data['id'], headers=headers)
        for info in response.json()['items']:
            data = {'personId': info['personId'], 'text':
            'Alert'}
            response = requests.post(MESSAGES_URL,
            headers=headers, params=params)
```

Answer: C

NEW QUESTION 12

- (Exam Topic 3)

Which traffic is handled on the control plane?

- A. BGP
- B. SMB
- C. NTP
- D. NETCONF

Answer: A

NEW QUESTION 17

- (Exam Topic 3)

What is a benefit of using model-driven programmability for infrastructure automation?

- A. connected user tracking
- B. infrastructure resource optimization
- C. multiple device control protocols
- D. device performance monitoring

Answer: C

NEW QUESTION 18

- (Exam Topic 3)

Which protocol is used for clock synchronization between network devices?

- A. FTP
- B. NNTP
- C. BGP
- D. NTP

Answer: D

Explanation:

Network Time Protocol (NTP) is an internet protocol used to synchronize with computer clock time sources in a network. It belongs to and is one of the oldest parts of the TCP/IP suite. The term NTP applies to both the protocol and the client-server programs that run on computers.

NEW QUESTION 20

- (Exam Topic 3)

Why would a developer compare a current version of code to a previous version?

- A. to provide the single source of truth
- B. to troubleshoot code failures
- C. to track who made a change
- D. to aid in collaboration

Answer: B

NEW QUESTION 25

- (Exam Topic 3)

Which protocol runs over TCP port 830?

- A. NETCONF
- B. Telnet
- C. RESTCONF
- D. HTTP

Answer: A

NEW QUESTION 29

- (Exam Topic 3)

An engineer prepares a set of Python scripts to interact with network devices. To avoid network performance issues, the engineer wants to run them in a test environment. Which resource must be used to monitor the live execution of code in an always-available environment?

- A. packet tracer
- B. learning labs
- C. sandbox
- D. code exchange

Answer: C

NEW QUESTION 33

- (Exam Topic 3)

Drag and drop the code from the bottom onto the box where the code is missing to authenticate with the Cisco DNA Center REST API by using basic authentication. Then generate a token for later use. Not all options are used.


```
import requests
from requests.auth import HTTPBasicAuth

BASE_URL = 'https://sandboxdnac2.cisco.com'
AUTH_URL = '/dna/system/api/v1/' + ' '
USERNAME = 'admin'
PASSWORD = 'qwer1234!'

response = requests. (BASE_URL + AUTH_URL,
    auth=HTTPBasicAuth( , ))
token = response.json()['Token']
print(token)
```

auth/basic	/auth/token	post	get
USERNAME	Token	PASSWORD	

- A. Mastered
 B. Not Mastered

Answer: A

Explanation:

```
import requests
from requests.auth import HTTPBasicAuth

BASE_URL = 'https://sandboxdnac2.cisco.com'
AUTH_URL = '/dna/system/api/v1/' + '/auth/token'
USERNAME = 'admin'
PASSWORD = 'qwer1234!'

response = requests. post (BASE_URL + AUTH_URL,
    auth=HTTPBasicAuth( USERNAME , PASSWORD ))
token = response.json()['Token']
print(token)
```

auth/basic	/auth/token	post	get
USERNAME	Token	PASSWORD	

NEW QUESTION 38

- (Exam Topic 3)

Which technology is responsible for matching a name to an IP address of an application running on a host?

- A. firewall
 B. proxy
 C. load balancer
 D. DNS

Answer: D

NEW QUESTION 39

- (Exam Topic 3)

What is a characteristic of Waterfall compared to Agile software development method?

- A. Waterfall focuses on continuous improvement, and Agile focuses on the design phase.
 B. Waterfall separates the project development lifecycle into sprints, and Agile does not use cycles.

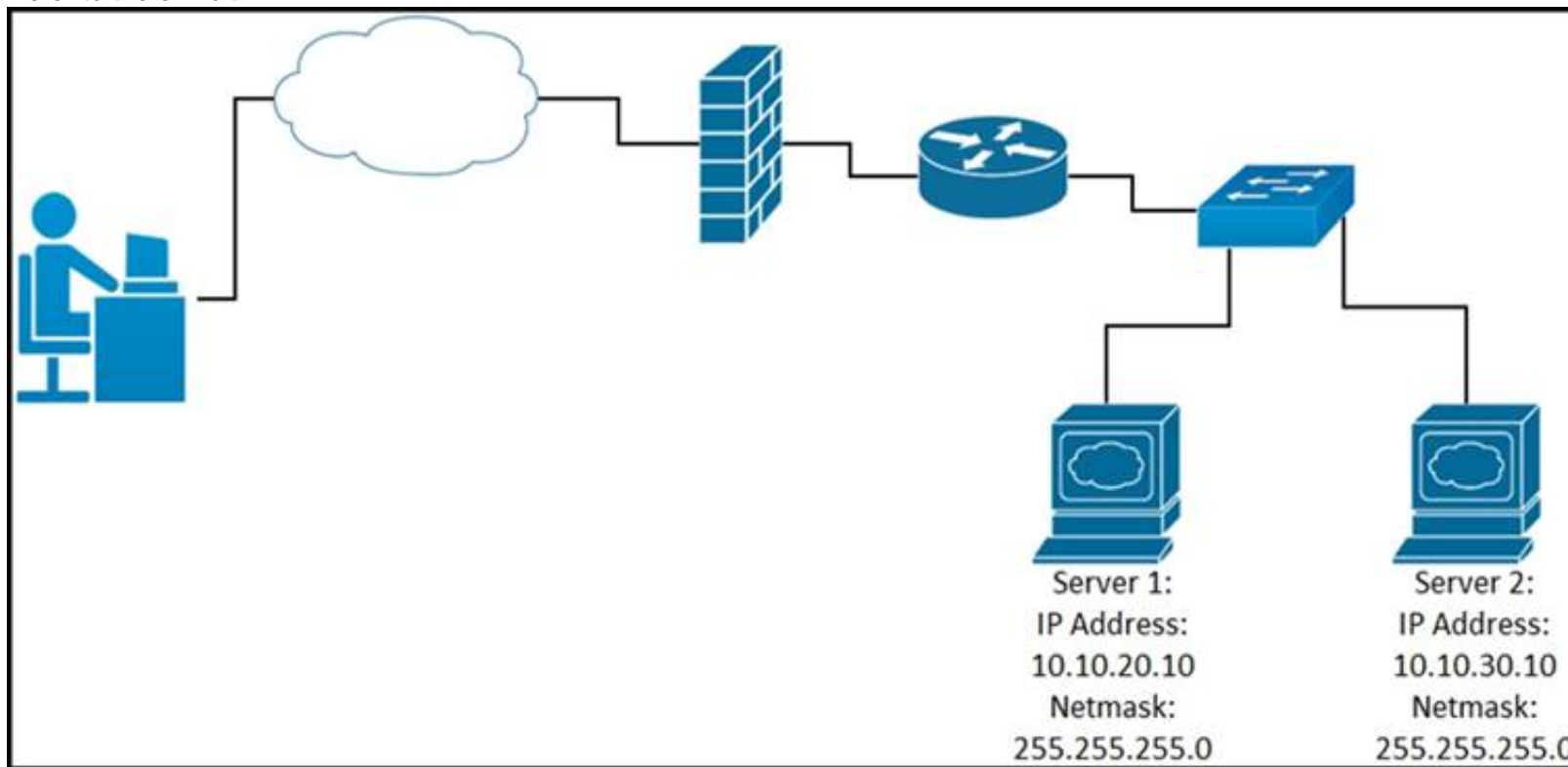
- C. Waterfall specifies requirements before development begins, and Agile responds flexibly to changes in requirements.
 D. Waterfall uses reviews with step by step approach, and Agile uses a serially phased approach.

Answer: C

NEW QUESTION 44

- (Exam Topic 3)

Refer to the exhibit.



While developing a Cisco Webex bot, an application reaches the public IP address of the firewall, but traffic is forwarded to the IP address of server 1 instead of the IP address of server 2. What causes this issue?

- A. The proxy server that rewrites traffic is misconfigured.
 B. The router is sending the traffic to server 1 instead of server 2.
 C. The switch is forwarding IP traffic to the wrong VLAN.
 D. NAT is misconfigured on the firewall.

Answer: D

NEW QUESTION 46

- (Exam Topic 3)

A file in a local Git repository has been updated and issued the `git add .` command. The `git diff` command has been run to compare the changes to the previous commit, but nothing shows. Which action identifies the problem?

- A. Run the `git add .` command again in the correct subdirectory to ensure changes added to the staging area.
 B. Run the `git commit` command before the differences are compared to receive the end state of the code.
 C. Run the `git status` command to see the differences between current and previous code review stages.
 D. Run the `git diff --staged` command to compare the code added to the staging area.

Answer: D

NEW QUESTION 51

- (Exam Topic 3)

What is the purpose of running tests before writing code in test-driven development?

- A. to find unexpected failures in the tests
 B. to demonstrate that the tests fail for expected reasons
 C. to ensure that the tests pass
 D. to provide proof of the work carried out

Answer: D

NEW QUESTION 53

- (Exam Topic 3)

Which IP service synchronizes the time across devices?

- A. DNS
 B. NTP
 C. SNMP
 D. NAT

Answer: B

NEW QUESTION 56

- (Exam Topic 3)

Which command reverses the last commit without changing the index file or the working tree position?

- A. git revert HEAD
- B. git reset --hard HEAD~3
- C. git reset --soft HEAD^
- D. git revert

Answer: C

NEW QUESTION 60

- (Exam Topic 3)

Drag and drop the functions from the left onto the networking devices on the right.

forwards by default	load balancer
distributes unicast traffic over devices	switch
uses traffic inspection to make forwarding decisions	firewall
distributes multicast traffic over devices	router

- A. Mastered
- B. Not Mastered

Answer: A

Explanation:

forwards by default	forwards by default
distributes unicast traffic over devices	distributes unicast traffic over devices
uses traffic inspection to make forwarding decisions	uses traffic inspection to make forwarding decisions
distributes multicast traffic over devices	distributes multicast traffic over devices

NEW QUESTION 62

- (Exam Topic 3)

```
import requests, json
url = https://sandboxdnac.cisco.com:443/dna/intent/api/v1/3daa70bdcd5b
headers = {
    'x-auth-token': 'eyJhbGc ... yJbN8',
    'Content-Type': 'application/json',
}
payload = {
    "settings": {
        "dhcpServer": ["172.30.200.5"],
        "dnsServer": {
            "domainName": "devnet.local",
            "primaryIpAddress": "172.30.200.6",
            "secondaryIpAddress": "172.30.200.7"},
        "syslogServer": {"ipAddresses": ["10.255.0.1"], "configureDnacIP": True}
    }
}
response = requests.request('POST', url, headers=headers, data=payload)
print(response.status_code)
```

Refer to the exhibit. A developer writes a script to create a new network by using the Cisco DNA Center API. After running the script for the first time, the developer observes that HTTP code 404 is printed to the console. Which action resolves the problem?

- A. The x-auth-token value must be changed to a valid token.
- B. The API URL must be changed with a valid URL.
- C. The requested payload must be fixed to include missing parts.
- D. Internal errors on the code of API server must be fixed.

Answer: B

NEW QUESTION 64

- (Exam Topic 3)
Drag and drop the API characteristics from the left onto the categories on the right.

The API is seen as a function call.

There is communication between server and client.

It follows a resource-oriented model.

The API can be stateless.

REST

RPC

- A. Mastered
- B. Not Mastered

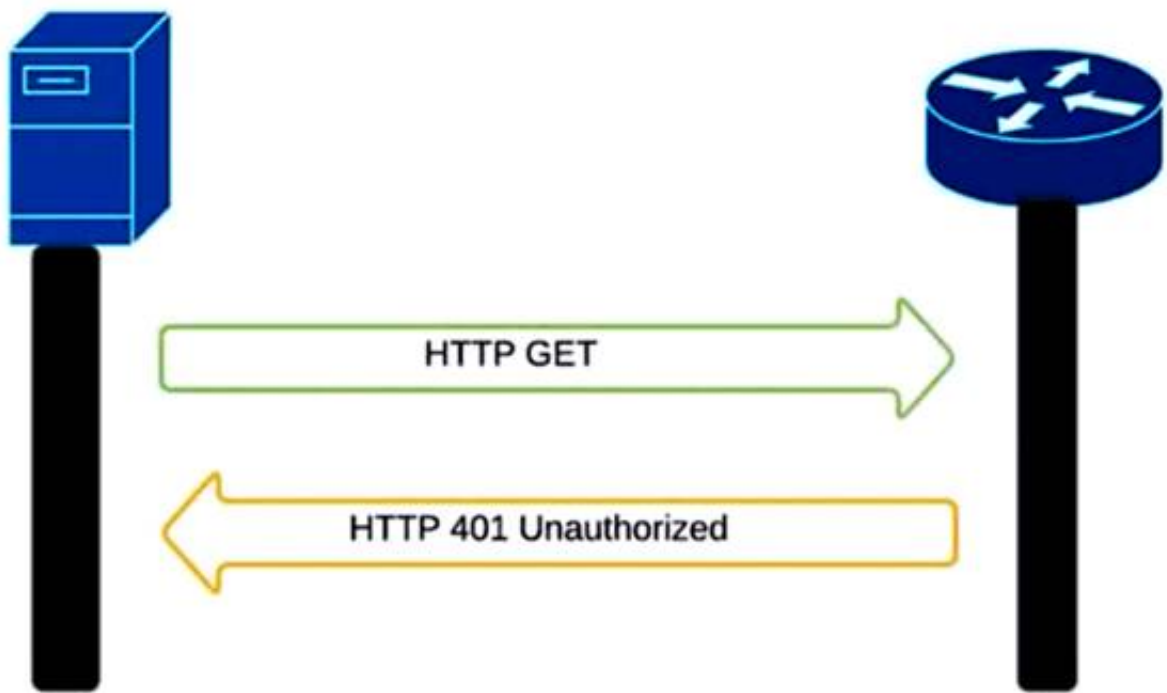
Answer: A

Explanation:
Graphical user interface, application Description automatically generated

NEW QUESTION 65

- (Exam Topic 3)
Refer to the exhibit.

```
curl -i -k -X 'GET' 'https://172.18.110.64:443/restconf/data/Cisco-IOS-XE-native:native/hostname' \
-H 'Accept: application/yang-data+json' \
-u 'cisco:cisco'
```



An administrator attempts to perform a GET operation by using the Cisco IOS XE RESTCONF API to return the hostname of a device. The sequence diagram in the exhibit illustrates the HTTP messages observed. Which change to the API request resolves the issue?

- A. Remove the -H 'Accept: application/yang-data+json' header.
- B. Replace -u cisco:cisco parameter with -u 'cisco:cisco'.
- C. Change the request method from -X 'GET' to -X 'POST'.
- D. Add the -H 'Content-Type: application/yang-data+json' header.

Answer: B

NEW QUESTION 66

- (Exam Topic 3)
Which action do webhooks enable an application to perform?

- A. Increase the request rate limit.
- B. Populate the application with restricted data.
- C. Receive real-time data.
- D. Implement a push model.

Answer: D

Explanation:
Simplifying the wording: Webhook enables the app to (push or receive real time) . The clients should receive real time but the app pushes.

NEW QUESTION 69

- (Exam Topic 3)

A developer is attempting to retrieve all the messages from a Cisco Webex space. The server responds by sending the first 1,000 messages. The developer must make additional requests to retrieve the rest of the messages. Which API constraint is described in this scenario?

- A. payload limiting
- B. throttling
- C. pagination
- D. rate limiting

Answer: C

Explanation:

<https://developer.atlassian.com/server/confluence/pagination-in-the-rest-api/>

NEW QUESTION 70

- (Exam Topic 3)

```
HTTPS/1.1 201 Created
Date: Tue, 08 Nov 2020 09:37:27 GMT
Server: example-server
Location: https://example.com/restconf/data\
          example-jukebox/library/dogbreed=Australian%20Cattle%20Dog
Last Modified: Tue 08 Nov 2020 09:37:27 GMT
ETag: "s1878124t4c"
```

Refer to the exhibit. Which RESTCONF request results in this response?

A.

```
GET /restconf/data/example-jukebox:jukebox/library HTTP/1.1
Host: example.com
Content-Type: application/yang-data-json

{
  "Example-jukebox:dogbreed" : [
    {
      "name" : "Australian Cattle Dog"
    }
  ]
}
```

B.

```
CONFIG /restconf/data/example-jukebox:jukebox/library HTTP/1.1
Host: example.com
Content-Type: application/yang-data-json

{
  "Example-jukebox:dogbreed" : [
    {
      "name" : "Australian Cattle Dog"
    }
  ]
}
```

C.

```
PUT /restconf/data/example-jukebox:jukebox/library HTTP/1.1
Host: example.com
Content-Type: application/yang-data-json

{
  "Example-jukebox:dogbreed" : [
    {
      "name" : "Australian Cattle Dog"
    }
  ]
}
```

D.

```
POST /restconf/data/example-jukebox:jukebox/library HTTP/1.1
Host: example.com
Content-Type: application/yang-data+json

{
  "Example:dogbreed" : [
    {
      "name" : "Australian Cattle Dog"
    }
  ]
}
```

Answer: D

NEW QUESTION 72

- (Exam Topic 3)

```
---
param0: Workflow1
param1:
  list:
    - name: VLAN_ID
      value: '198'
param2: 0
```

Refer to the exhibit. The YAML shown contains an object "param0" that is equal to "Workflow1", a second object "param1" that contains an object called "list" which contains an array of two objects, "name" (equal to "VLAN_ID") and "value" (equal to a text value "198"), and finally a third object "param2" that is equal to "0". What is the equivalent message in JSON data format?

A. [

```
  "param0"="Workflow1";
  "param1"=
    "list"=
      [ "name"="VLAN_ID";
        "value"="198" ]
  "param2"=0
]
```

B. {

```
  "param0": "Workflow1";
  "param1": {
    "list":
      [
        { "name": "VLAN_ID";
          "value": "198" }
      ]
  },
  "param2": 0
}
```

C. [

```
  "param0": "Workflow1",
  "param1": {
    "list":
      {
        [ "name": "VLAN_ID",
          "value": "198" ]
      }
  },
  "param2": 0
]
```

D.


```
{
  "param0": "Workflow1",
  "param1": {
    "list": [
      {
        "name": "VLAN_ID",
        "value": "198"
      }
    ]
  },
  "param2": 0
}
```

Answer: D

NEW QUESTION 76

- (Exam Topic 3)
What is a procedural component of CI/CD pipelines?

- A. Bundled artifacts must be generated.
- B. Every test must pass for the pipeline to continue its execution.
- C. Some tests fail without stopping the pipeline execution.
- D. The release label that identifies the build is optional.

Answer: B

Explanation:
In a CI/CD (Continuous Integration/Continuous Deployment) pipeline, a procedural component is a specific step or action that is carried out in a specific order as part of the pipeline process. One of the procedural components of a CI/CD pipeline is that every test must pass in order for the pipeline to continue its execution. If any test fails, the pipeline will stop and the issue must be addressed before the pipeline can continue. This is an important procedural component of a CI/CD pipeline because it ensures that the code being deployed is of high quality and meets the necessary standards before it is released.

NEW QUESTION 77

- (Exam Topic 3)
Which solution reduces costs from MPLS, improves application performance, and simplifies operations?

- A. Cisco NSO
- B. Cisco SD-WAN
- C. Cisco ACI
- D. Cisco DNA Center

Answer: B

NEW QUESTION 82

- (Exam Topic 3)
Drag and drop the characteristics from the left onto the corresponding categories on the right to compare RESTful and RPC APIs.

Answer Area

stateless

session-based

must use HTTP

sometimes uses HTTP

RESTful

RPC

- A. Mastered
- B. Not Mastered

Answer: A

Explanation:



NEW QUESTION 84

- (Exam Topic 3)

What is a firehose webhook?

- A. It collects data from third-party cloud APIs for custom applications.
- B. It enables an application to receive real-time data from Cisco Webex.
- C. It enables data to flow from the Cisco Webex API to a user's application.
- D. It sends a notification of any event for commonly used resources.

Answer: D

NEW QUESTION 87

- (Exam Topic 3)

A developer creates a program in which an object maintains a list of classes based on the observer pattern. The classes are dependent on the object. Whenever the state of the object changes, it notifies the dependent classes directly through callbacks. Which advantage of the observer pattern offers minimum dependencies and maximum flexibility between dependent objects or classes?

- A. tight coupling
- B. cohesion
- C. mediation
- D. loose coupling

Answer: D

NEW QUESTION 89

- (Exam Topic 3)

```

1  - hosts: nxos_rtr
2    gather_facts: false
3    tasks:
4      - nxos_hsrp:
5          group: "{{ item.group }}"
6          vip: "{{ item.vip }}"
7          priority: 115
8          interface: "{{ item.interface }}"
9          preempt: enabled
10         auth_type: md5
11         auth_string: "s3cuR3"
12         version: 2
13         host: "{{ hostvars['rtr-1a']['ansible_ssh_host'] }}"
14       with_items:
15         - "{{ hsrp_groups }}"
16       delegate_to: "{{ hostvars['srv-1a']['ansible_ssh_host'] }}"
  
```

Refer to the exhibit. An engineer runs a network that consists of Cisco Nexus devices. The network is distributed between data centers in different locations. The switches are configured using standalone connections and a single point of failure. Which process is being automated by the Ansible playbook?

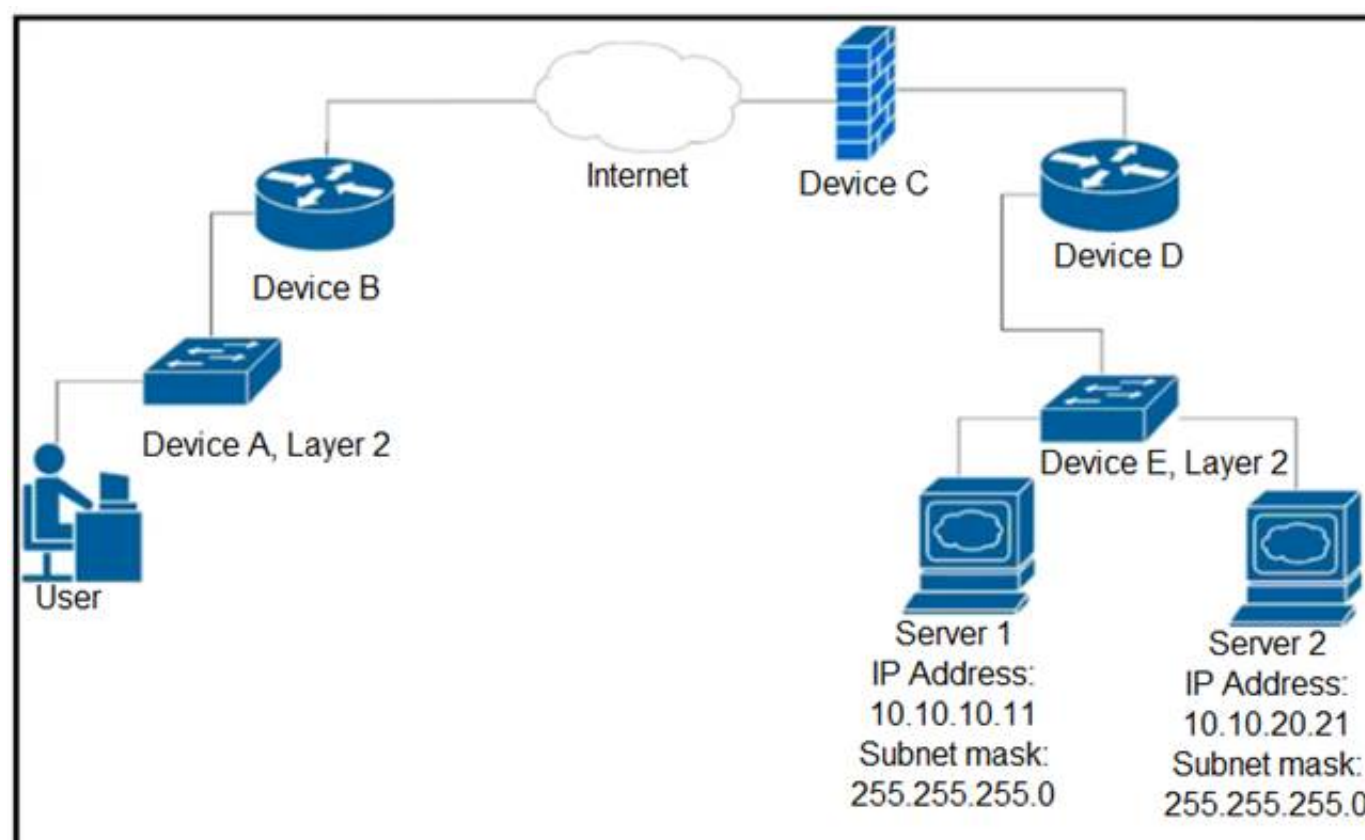
- A. enabling HSRP on the nxos_rtr inventory host
- B. enabling HSRP on the rtr-1a inventory host
- C. executing HSRP configuration from the Ansible controller node
- D. executing HSRP configuration from the srv-1a inventory host

Answer: B

NEW QUESTION 92

- (Exam Topic 3)

Refer to the exhibit.



Up to which device does the communication server 1 and server 2 go?

- A. device B
- B. device C
- C. device D
- D. device E

Answer: C

NEW QUESTION 95

- (Exam Topic 3)

What is a function of the default gateway in a network?

- A. to drop traffic that is destined to the default gateway
- B. to forward traffic to different subnets
- C. to forward traffic to the same subnet
- D. to drop traffic that is not destined to the default gateway

Answer: B

NEW QUESTION 97

- (Exam Topic 3)

Drag and drop the code from the bottom onto the box where the code is missing to obtain a list of network devices by using the Cisco Meraki API. Not all options are used.

```
import requests

url = "https://api.meraki.com/api/v0/ [ ] /{{networkId}}/ [ ] "

payload = {}
headers = {
    'Accept': '*/*'
}

response = requests.request("[ ]", url, headers=headers, data=payload)

print(response.text.[ ] ('utf8'))
```

- A. Mastered
- B. Not Mastered

Answer: A

Explanation:


```
import requests

url = "https://api.meraki.com/api/v0/{networks}/{networkId}/{devices}"

payload = {}
headers = {
    'Accept': '*/*'
}

response = requests.request("GET", url, headers=headers, data=payload)

print(response.text.encode('utf8'))
```

teams networks devices GET POST encrypt encode

NEW QUESTION 101

- (Exam Topic 3)

Which port does HTTPS use by default?

- A. 433
- B. 443
- C. 803
- D. 883

Answer: B

NEW QUESTION 104

- (Exam Topic 2)

Which Cisco product provides malware and content filtering through DNS?

- A. Cisco ASA Firepower module
- B. Cisco AMP
- C. Cisco ISE
- D. Cisco Umbrella

Answer: D

NEW QUESTION 109

- (Exam Topic 3)

```
#!/bin/bash
apt-get update
apt-get -y install git
cd Code/Network_Config
mkdir PRODUCTION
cd PRODUCTION
touch state.yml
vi state.yml
```

Refer to the exhibit. A network engineer executes the bash script shown. Which two things are achieved by running the script? (Choose two.)

- A. A directory called PRODUCTION is created.
- B. The engineer changes to the parent directory.
- C. A YAML file is created.
- D. A YAML file is removed.
- E. A directory called state.yml is created.

Answer: AC

NEW QUESTION 114

- (Exam Topic 3)

```
import requests
from requests.auth import HTTPBasicAuth

user= "user"
password= "PASSWORD"

token=requests.post('https://<DNAC ADRESS>/dna/system/api/v1/auth/token',
[ ])
```

Refer to the exhibit. A developer must use a token to collect data from Cisco DNA Center API and prepares a Python script to send requests. Which line of code needs to be placed on the snippet where the code is missing to obtain a token from the Cisco DNA Center API?

- A. token=BasicAuth('user','password'))
- B. auth=BasicAuth('user','password'))
- C. auth=HTTPBasicAuth(user,password))
- D. token=HTTPBasicAuth(user,password))

Answer: C

NEW QUESTION 115

- (Exam Topic 3)

What are two benefits of using classes over functions when writing applications? (Choose two.)

- A. improved readability
- B. increased compatibility
- C. variable reusability
- D. increased performance
- E. code organization

Answer: AC

NEW QUESTION 120

- (Exam Topic 3)

Refer to the exhibit.

HTTP Request

```
curl http://hello-api.info -v
```

HTTP Response

```
* Trying hello-app.info...
* TCP_NODELAY set
* Connected to hello-app.info (hello-app.info) port 80 (#0)
> GET / HTTP/1.1
> Host:hello-app.info
> User-Agent: curl/7.64.1
> Accept: */*
>

< HTTP/1.1 502 Bad Gateway
< Server: nginx/1.14.0 (Ubuntu)
< Date: Sat, 21 Nov 2020 11:09:54 GMT
< Content-Type: text/html
< Content-Length: 182
< Connection: keep-alive
```

A developer cannot reach the web application behind an NGINX load balancer. The developer sends a request to an application FQDN with cURL but gets an HTTP 502 response. Which action solves the problem?

- A. Fix errors in the server configuration, which is behind the load balancer.
- B. Bring up the load balancer to the active state.
- C. Fix errors in the cURL request sent by the client.
- D. Change the default gateway on the load balancer to an active one.

Answer: A

Explanation:

The HyperText Transfer Protocol (HTTP) 502 Bad Gateway server error response code indicates that the server, while acting as a gateway or proxy, received an invalid response from the upstream server.

<https://developer.mozilla.org/en-US/docs/Web/HTTP/Status/502#:~:text=The%20HyperText%20Transfer%20P>

NEW QUESTION 123

- (Exam Topic 2)

Drag and drop the code snippets from the bottom to the blanks in the code to test the API response through the Python unittest library. Not all options are used.

```
import unittest
import json
from apidogs import app

class TestsAPIDogs(unittest.TestCase):

    def setUp(self):
        self.app = app.test_client()

    # Check status response of API
    def test_status(self):
        resp =self.app.get('/dogs/all')
        status_code = response.
        self.assertEqual(status_code, )

    # Check for content type is in application/json
    def test_content_type(self):
        resp =self.app.get('/dogs/all')
        self.assertEqual(resp. , 'application/json')

    def test_item_not_exist(self):
        resp =self.app.get('/dogs?id= ')
        self.assertEqual(response.status code,404)
```

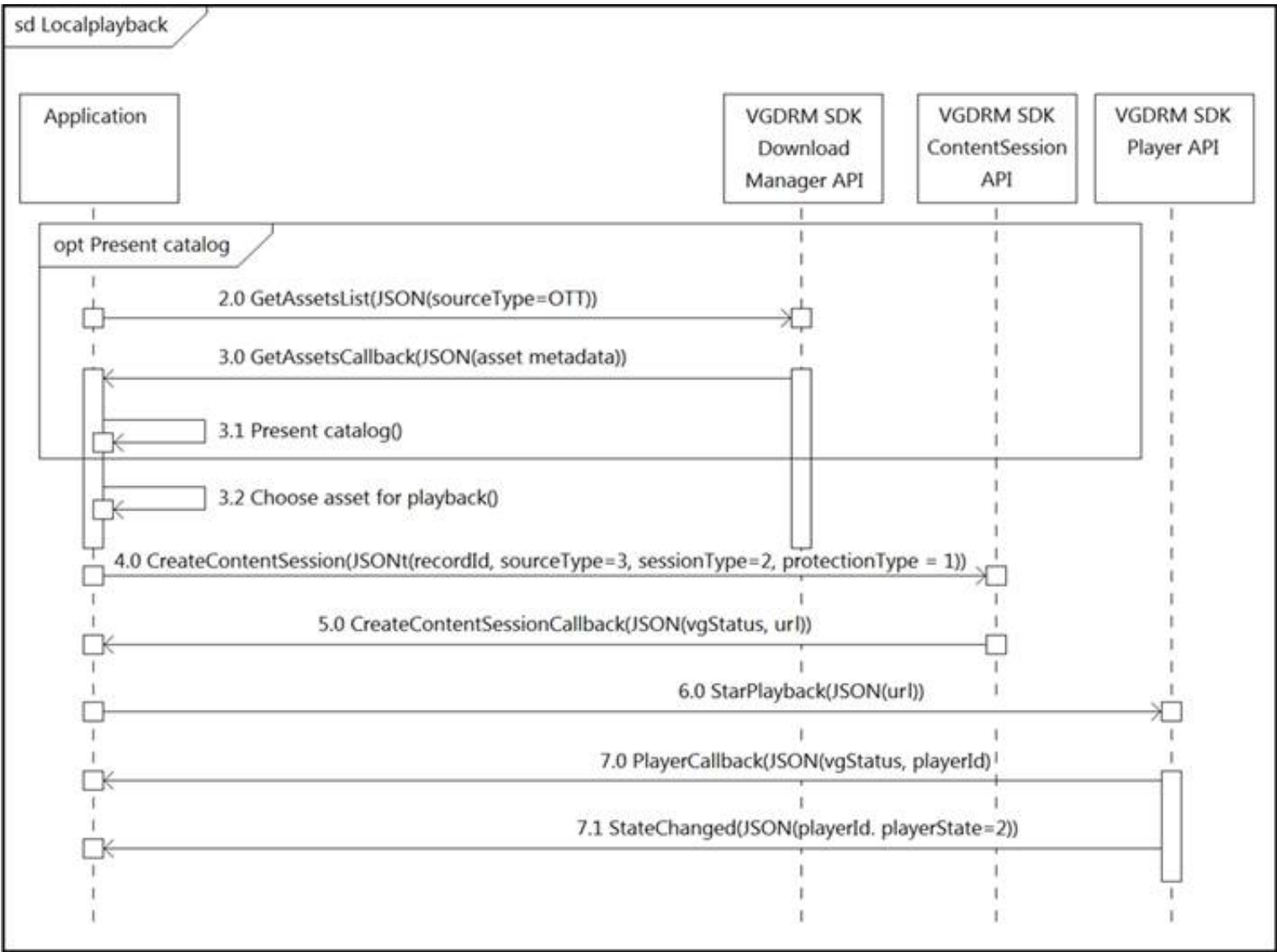
none	content	
status_code	200	content_type
403	status	

- A. Mastered
- B. Not Mastered

Answer: A

Explanation:
Graphical user interface, text Description automatically generated

NEW QUESTION 124
- (Exam Topic 2)
Refer to the exhibit.



What do all the calls shown in the sequence diagram have in common?

- A. All the calls are optional.

- B. All the calls are asynchronous.
- C. All the calls are synchronous.
- D. All the calls depend on the catalog.

Answer: D

NEW QUESTION 129

- (Exam Topic 2)

Refer to the exhibit.

```
import requests
from requests.auth import HTTPBasicAuth
headers = {'Content-Type': 'application/json'}
base_url = 'https://10.1.2.3'
auth_url = '/dna/system/api/v1/auth/token'
devices_url = '/dna/intent/api/v1/network-device'

token = requests.post(
    base_url + auth_url, headers=headers,
    auth=HTTPBasicAuth(username="admin", password="DevNet123"))
data = token.json()

query_string_params = {'platformId': 'C9500-40X'}
response = requests.get(
    base_url + devices_url, headers=headers,
    params=query_string_params)
print(f'{response.code}')
```

A network engineer must manage the network devices. The engineer prepares a Python scripts to authenticate to the Cisco to DNA Center API and request a device list. The device request fails and returns errors code 401. Which action solves the problem?

- A. Update the API UR
- B. which matched the API endpoint for device list.
- C. Send the request to another network in case there are reachability Issues.
- D. Send the Authentication header In the request with a valid configuration.
- E. Update the credentials that are already supplied and retry the request

Answer: D

NEW QUESTION 131

- (Exam Topic 2)

Refer to the exhibit.

Generating Client ID and API Key:

- Log in to your AMP for Endpoints Console.
- Go to Accounts > Business Settings.
- Click Configure API Credentials under Features to generate the Client ID and secure API Key.

Once you have the API client ID and API key, you can make the API calls as follows:

```
https://<your_client_id>:<your_api_key>@<api_endpoint>
```

Alternatively you can use Basic HTTP Authentication. Base 64 encode the string ":", and send that prefixed with the string "Basic" as the authorization header. For instance, if your client_id was 1234, and your api_key was "atest", then it would be base64 encoded to "MTIzNDphdGVzdA==", and your header would be:

```
Authorization: Basic MTIzNDphdGVzdA==
```

The documentation outlines how to use credentials for the AMP API Which script successfully performs an API call using basic authentication?

A)

```
import requests
amp_client_id = 'a1b2c3d4e5f6g7h8i9j0'
amp_login_password = 'l0g1n_p@ssw0rd'
url = 'https://api.amp.cisco.com/v1/version'
request = requests.get(url,
    auth=(amp_client_id, amp_login_password))
print(request.json())
```

B)


```
import requests
amp_client_id = 'a1b2c3d4e5f6g7h8i9j0'
amp_api_key = 'a1b2c3d4-e5f6-g7h8-i9j0-k1l2m3n4o5p6'
url = 'https://api.amp.cisco.com/v1/version'
request = requests.get(url)
print(request.json())
```

C)

```
import requests
amp_auth_token = 'a1b2c3d4e5f6g7h8i9j0 k1l2m3n4o5p6'
url = 'https://api.amp.cisco.com/v1/version'
request = requests.get(url,
    auth=(amp_auth_token))
print(request.json())
```

D)

```
import requests
amp_client_id = 'a1b2c3d4e5f6g7h8i9j0'
amp_api_key = 'a1b2c3d4-e5f6-g7h8-i9j0-k1l2m3n4o5p6'
url = 'https://api.amp.cisco.com/v1/version'
request = requests.get(url,
    auth=(amp_client_id, amp_api_key))
print(request.json())
```

- A. Option
- B. Option
- C. Option
- D. Option

Answer: D

NEW QUESTION 136

- (Exam Topic 2)

Refer to the exhibit.

API v1 documentation:

Authentication and authorization: Bearer Token

Inventory endpoint: /api/v1/inventory

Method: GET

Response formats: text/html, application/json,
application/html

Token:

dXNlcm5hbWU6cGFzc3dvcmQ=

Api call:

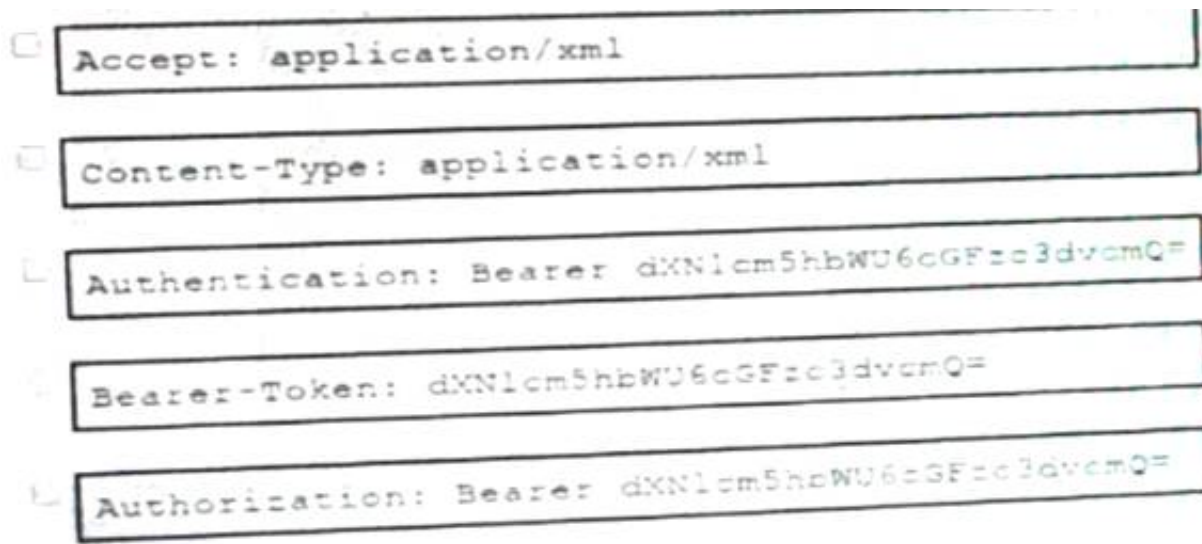
GET /api/v1/inventory HTTP/1.1

Host: example.com

Response:

HTTP/1.1 401 Unauthorized

An API call is constructed to retrieve the inventory in XML format by using the API. The response to the call is 401 Unauthorized. Which two headers must be added to the API call? (Choose two.)



- A. Option A
- B. Option B
- C. Option C
- D. Option D
- E. Option E

Answer: BE

NEW QUESTION 138

- (Exam Topic 2)

What are two considerations when selecting the "best route" for a network device to reach its destination? (Choose two.)

- A. MAC address
- B. metrics
- C. administrative distance
- D. IP address
- E. subnet mask

Answer: BC

NEW QUESTION 143

- (Exam Topic 2)

Before which process is code review performed when version control is used?

- A. Branching code
- B. Merge of code
- C. Checkout of code
- D. Committing code

Answer: D

NEW QUESTION 145

- (Exam Topic 2)

What is a benefit of test-driven development?

- A. early customer involvement
- B. increased code quality
- C. faster releases that have minimal features
- D. strict adherence to product requirements

Answer: D

NEW QUESTION 150

- (Exam Topic 2)

In which two ways is an application characterized when interacting with a webhook? (Choose two.)

- A. codec
- B. receiver
- C. transaction monitor
- D. processor
- E. listener

Answer: BE

NEW QUESTION 154

- (Exam Topic 2)

Refer to the exhibit.

```
user_manager.py
1 import psycopg2
2 import json, sys
3
4 # Load config file
5 config = None
6 with open('config.json') as config_file:
7     config = json.load(config_file)
8 if not config:
9     print("Error loading configuration file.")
10    sys.exit(1)
11
12 connection = psycopg2.connect(
13     database="users",
14     host=config["DB_USER"], user=config["DB_USER"], password=config["DB_PWD"]
15 )
16 connection.set_session()
17
18 def has_admin_role(username):
19     with connection.cursor() as cursor:
20         query = 'SELECT admin_role FROM users WHERE username = {0}'
21         cursor.execute(query.format(username))
22         result = cursor.fetchone()
23     return result
24
25 has_admin_role("ops.shared")

config.json
1 {
2     "DB_USER": "pguser",
3     "DB_PWD": "@123Qwer%4",
4     "DB_HOST": "devnetdb.example.com"
5 }
```

An engineer must check the admin rights of users on a database regularly and prepares the Python script to automate the process. The script connects to the database and runs a query. What is a security issue about the secrets in the code that relates to secret protection?

- A. They must be stored in configuration files if there is a possibility of leakage.
- B. They must be Base64-encoded if stored in the user database.
- C. They must be encrypted if stored in the user database.
- D. They must be stored in configuration files if no authentication will be used.

Answer: D

NEW QUESTION 155

- (Exam Topic 2)

Refer to the exhibit.

```
# base image
FROM alpine

# Install python and pip
RUN apk add --update py2-pip

# Install python modules needed by the python app
COPY requirements.txt /usr/src/app/
RUN pip install --no-cache-dir -r /usr/src/app/requirements.txt

#copy local files for the app to run
COPY app.py /usr/src/app/
COPY templates/index.html /usr/src/app/templates/

EXPOSE 8080

#run the application
CMD ["python", "/usr/src/app/app.py"]
```

Which function does the EXPOSE line perform when building an image from this Dockerfile?

- A. Local port 8080 of the container that launched with this docker image is accessible from co-hosted containers and external clients.
- B. Local port 8080 is not reachable at all because no IP address is specified along with the EXPOSE command of the Dockerfile.
- C. Local port 8080 is accessible from other containers running on the same docker host as the container that launched with this docker image.
- D. Local port 8080 of the container that launched with this docker image is accessible to external clients.

Answer: C

Explanation:

By default, the EXPOSE instruction does not expose the container's ports to be accessible from the host. In other words, it only makes the stated ports available for inter-container interaction.

Whereas publishing a port using either -P or -p exposes it, exposing a port using EXPOSE or –expose does not publish it. So, while exposed ports can only be accessed internally, published ports can be accessible by external containers and services.
<https://www.whitesourcesoftware.com/free-developer-tools/blog/docker-expose-port/>

NEW QUESTION 160

- (Exam Topic 2)

A developer creates a script that configured multiple Cisco IOS XE devices in a corporate infrastructure. The internal test environment is unavailable, and no maintenance window is available to test on a low-priority production environment. Which resource is used to test the code before it is applied to the production environment?

- A. Code Exchange
- B. Cisco DevNet Learning Labs
- C. Cisco DevNet Sandbox
- D. Cisco Support

Answer: C

Explanation:

Reference: <https://developer.cisco.com/site/sandbox/>

NEW QUESTION 164

- (Exam Topic 2)

Which tool is used to block all traffic to the domain by using a single API call?

- A. Cisco ISE
- B. Cisco Firepower
- C. Cisco AMP
- D. Cisco Umbrella

Answer: B

NEW QUESTION 168

- (Exam Topic 2)

Which platform is used to programmatically create a space and invite users for collaboration?

- A. Cisco Intersight
- B. Cisco Finesse
- C. Cisco Webex
- D. Cisco UCM

Answer: C

NEW QUESTION 169

- (Exam Topic 2)

Where is an IP packet routed if the packet does not match any routes in the routing table?

- A. firewall
- B. load balancer
- C. central switch
- D. default gateway

Answer: D

NEW QUESTION 172

- (Exam Topic 2)

An engineer must configure Cisco Nexus devices and wants to automate this workflow. The engineer enables the Cisco NX-OS REST API to configure the devices by using an Ansible playbook. Before running the code, which resource must be used to verify that the code works correctly?

- A. Cisco NX-OS SDK
- B. Cisco Learning Labs
- C. Cisco Code Exchange
- D. Cisco Modeling Labs

Answer: A

NEW QUESTION 177

- (Exam Topic 2)

Which advantage does the agile process offer compared to waterfall software development?

- A. to view the full scope of end-to-end work
- B. to have each phase end before the next begins
- C. to fix any issues at the end of the development cycle
- D. to add or update features with incremental delivery

Answer: D

NEW QUESTION 182

- (Exam Topic 2)

Refer to the exhibit.

```
>>> response_data = requests.get(base_url + request_url, cookies=cookies)
Traceback (most recent call last):
  File "<stdin>", line 1, in <module>
NameError: name 'requests' is not defined
>>>
```

A Python code has been written to query a device. The executed code results in the error shown. Which action resolves the problem?

- A. import json
- B. requests("GET", base_url + request_url, cookies=cookies)
- C. pip install requests
- D. import requests

Answer: D

NEW QUESTION 183

- (Exam Topic 2)

How are load balancers used in modern application deployment?

- A. Allow traffic to continue as new compute units are brought up and old compute units are taken down.
- B. Allow http and https traffic to continue as old compute units are discontinued before new units are brought up.
- C. Turn off traffic and take down compute units, then update and bring the compute units back up.
- D. Bring up new compute units, test the compute units, and switch the traffic from old units to new units.

Answer: D

NEW QUESTION 185

- (Exam Topic 2)

Refer to the exhibit.

```
1 #/bin/bash
2
3 curl https://ciscoDevnet.com/devnet-0.13.tar.gz -o /tmp/devnet.tar.gz
4 tar -zxvf /tmp/devnet.tar.gz
5 mkdir /tmp/devnet && pushd /tmp/devnet
6
7 ./configure && make && make install
8
9 systemctl enable devnet
10 systemctl start devnet
```

A network engineer works on a Cisco DevNet application that is available for download on the Cisco DevNet website. The engineer prepares a bash script to automate operations that relate to the application. Which workflow is being automated in the bash script?

- A. compilation and configuration of the Cisco DevNet application so that it must be started manually
- B. compilation, installation, and configuration of the Cisco DevNet application so that it starts automatically
- C. compilation and installation of the Cisco DevNet application for an autonomous deployment model
- D. installation and configuration of the Cisco DevNet application so that it starts manually

Answer: B

NEW QUESTION 189

- (Exam Topic 2)

What is a requirement when authenticating a RESTCONF API session with a router that runs Cisco IOS XE Software?

- A. No authentication is required.
- B. OAuth must be used.
- C. Basic authentication must be used.
- D. A token must be retrieved and the associated string must be embedded in the X-Auth-Token header.

Answer: C

Explanation:

<https://www.cisco.com/c/en/us/td/docs/routers/csr1000/software/restapi/restapi/RESTAPIClient.html>

NEW QUESTION 194

- (Exam Topic 2)

What is a benefit of model-driven programmability?

- A. It addresses the static architecture of traditional networks being decentralized and complex.
- B. By modeling data, it ensures that vast quantities of data are usable for monitoring.

- C. It provides a programmatic and standards-based way of writing configurations to any network device.
D. It simplifies management and operations by decoupling the networking hardware from its control mechanism.

Answer: D

NEW QUESTION 198

- (Exam Topic 2)

Refer to the exhibit.

```

module ietf-ip {
  namespace "urn:ietf:params:xml:ns:yang:ietf-ip";
  prefix ip;
  import ietf-interfaces {
    prefix if;
  }
  augment "/if:interfaces/if:interface" {
    container ipv4 {
      leaf enabled {
        type boolean;
        default true;
      }
      list address {
        key "ip";
        leaf ip {
          type inet:ipv4-address-no-zone;
        }
        choice subnet {
          mandatory true;
          leaf prefix-length {
            type uint8 {
              range "0..32";
            }
          }
          leaf netmask {
            type yang:dotted-quad;
          }
        }
      }
    }
  }
}

module ietf-interfaces {
  namespace "urn:ietf:params:xml:ns:yang:ietf-interfaces";
  prefix if;
  typedef interface-ref {
    type leafref {
      path "/if:interfaces/if:interface/if:name";
    }
  }
  container interfaces {
    list interface {
      key "name";
      leaf name {
        type string;
      }
      leaf description {
        type string;
      }
      leaf type {
        type identityref {
          base interface-type;
        }
        mandatory true;
      }
      leaf enabled {
        type boolean;
        default "true";
      }
    }
  }
}

```

Which JSON snippet configures a new interface according to YANG model?

A)

```

{"ietf-interfaces:interface": {
  "name": "Loopback100",
  "enabled": true,
  "ietf-ip:ipv4": {
    "address": [
      {
        "ip": "10.255.254.1",
        "netmask": "255.255.255.0"
      }
    ]
  }
}

```

B)

```

{"ietf-interfaces": {
  interface: {
    "name": "Loopback100",
    "enabled": true,
    "ietf-ip": {
      ipv4: {
        "address": [
          {
            "ip": "10.255.254.1",
            "netmask": "255.255.255.0"
          }
        ]
      }
    }
  }
}

```

C)

```

{ "interface" {
  "name": "Loopback100",
  "enabled": true,
  "ipv4": {
    "address": [
      {
        "ip": "10.255.254.1",
        "netmask": "255.255.255.0"
      }
    ]
  }
}

```

D)

```

“ietf-interfaces:interface”: {
  “name”: “Loopback100”,
  “enabled”: true,
  “ietf-ip:ipv4:address”: [
    {
      “ip”: “10.255.254.1”,
      “netmask”: “255.255.255.0”
    } ]
  }
}

```

- A. Option A
- B. Option B
- C. Option C
- D. Option D

Answer: B

NEW QUESTION 201

- (Exam Topic 2)

Refer to the exhibit.

```

--- README.md-repo  2019-10-06 21:15:59.000000000 +0100
+++ README.md       2019-10-06 21:07:35.000000000 +0100
@@ -88,8 +88,6 @@
    \ \ \

-
-
  ## Troubleshooting

  ### CMake
@@ -162,4 +160,13 @@

  ## References

+### Mosquitto
+
+* [github] (https://github.com/eclipse/mosquitto)
+* [homepage] (https://mosquitto.org)
+
+### MQTT
+
+* [organisation] (http://mgtt.org)
+

```

The output of the diff-u README.md-repo README.md command is shown. The original file was 165 lines long How many lines are in the edited copy of the file?

- A. 162
- B. 165
- C. 172
- D. 173

Answer: C

NEW QUESTION 202

- (Exam Topic 2)

Which tool allows changes to the configuration management toolset to be tested?

- A. Cisco VIRL
- B. NAPALM
- C. Ansible
- D. pyATS

Answer: D

NEW QUESTION 207

- (Exam Topic 2)

A file that already exists in a local repository is updated. Which command must be executed to ensure that the changes in the file are included in the next Git commit?

- A. git update
- B. git merge
- C. git add

D. git rebase

Answer: A

NEW QUESTION 212

- (Exam Topic 2)

Which protocol must be allowed on the firewall so that NTP services work properly?

- A. ICMP
- B. BGP
- C. UDP
- D. TCP

Answer: C

Explanation:

Reference:

<https://www.cisco.com/c/en/us/support/docs/ip/network-time-protocol-ntp/108076-ntp-troubleshoot.html>

NEW QUESTION 215

- (Exam Topic 2)

What does a load balancer distribute in a network environment?

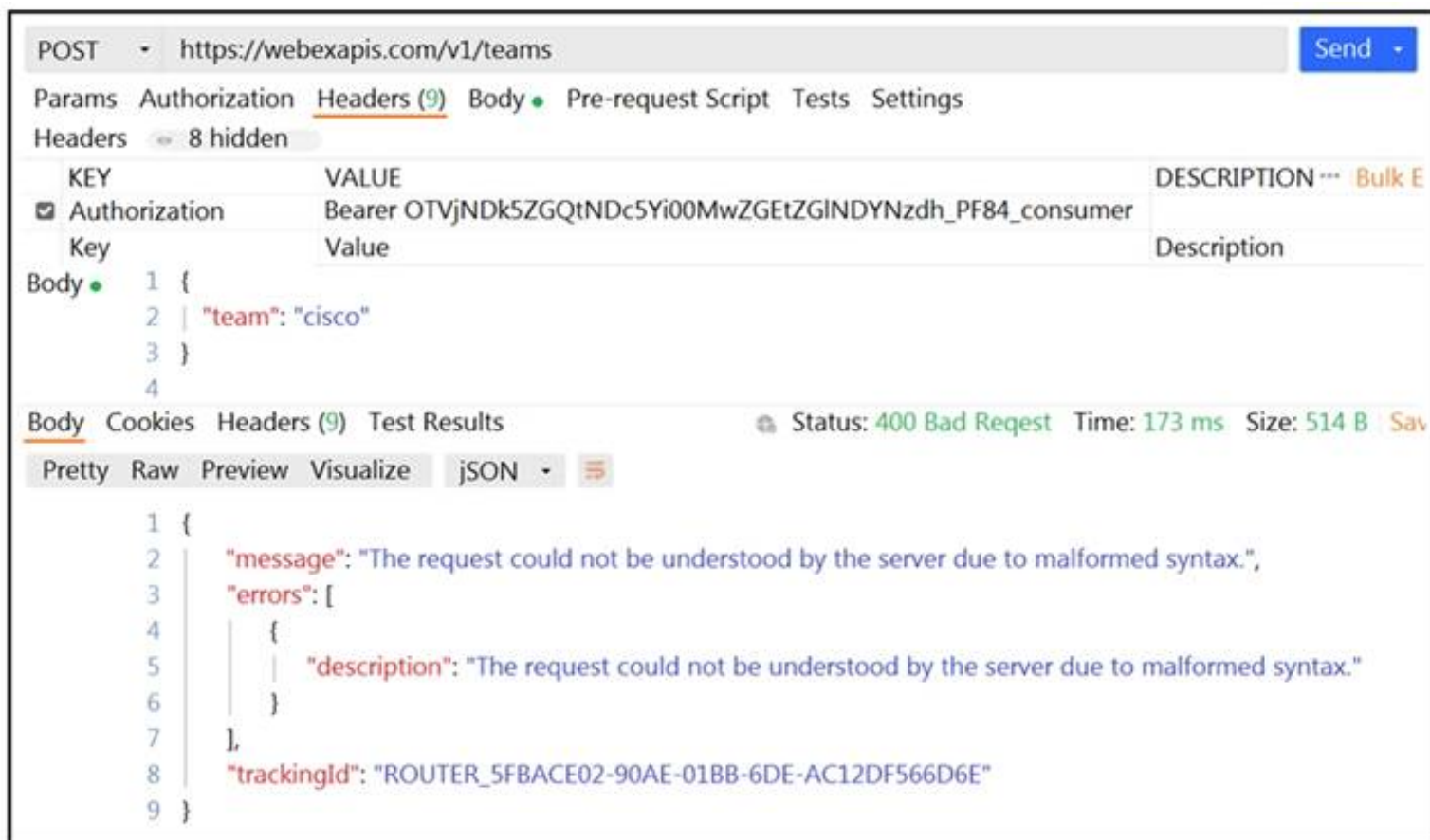
- A. outgoing connections to the network
- B. incoming traffic across multiple servers
- C. different TCP connections to the routers
- D. traffic in the network by leveraging the switch architecture

Answer: B

NEW QUESTION 219

- (Exam Topic 2)

Refer to the exhibit.



POST https://webexapis.com/v1/teams

Params Authorization Headers (9) Body Pre-request Script Tests Settings

Headers 8 hidden

KEY	VALUE	DESCRIPTION
Authorization	Bearer OTVjNDk5ZGQtNDc5Yi00MwZGEtZGINDYNzdh_PF84_consumer	

Body

```
1 {
2   "team": "cisco"
3 }
```

Body Cookies Headers (9) Test Results

Status: 400 Bad Request Time: 173 ms Size: 514 B

Pretty Raw Preview Visualize JSON

```
1 {
2   "message": "The request could not be understood by the server due to malformed syntax.",
3   "errors": [
4     {
5       "description": "The request could not be understood by the server due to malformed syntax."
6     }
7   ],
8   "trackingId": "ROUTER_5FBACE02-90AE-01BB-6DE-AC12DF566D6E"
9 }
```

A developer wants to create a room named cisco through Webex API. The developer prepares the request by putting an API token inside the authorization header; however, the given HTTP call returns error code 400. How must the call parameters be changed to ensure a valid response?

- A. Replace the team body parameter with the name body parameter.
- B. Replace cisco with a valid name for a team.
- C. Change the token in the header with the authorization token.
- D. Change the HTTP method of the call to PUT.

Answer: A

NEW QUESTION 220

- (Exam Topic 1)

Fill in the blanks to complete the statement.

Given a username of "devnet" And a password "Cisco123", applications must create a base64 encoding of the string " _____ " when sending HTTP requests to an API that uses _____ authentication.

Given a username of "devnet" and a password of "cisco123", applications must create a base64 encoding of the string " _____ " when sending HTTP requests to an API that uses _____ authentication.

- A. Mastered
- B. Not Mastered

Answer: A

Explanation:

Solution as below

Given a username of "devnet" and a password of "cisco123", applications must create a base64 encoding of the string "devnet:cisco123" when sending HTTP requests to an API that uses Basic authentication.

NEW QUESTION 225

- (Exam Topic 1)

What is used in Layer 2 switches to direct packet transmission to the intended recipient?

- A. spanning tree
- B. IPv4 address
- C. IPv6 address
- D. MAC address

Answer: D

NEW QUESTION 229

- (Exam Topic 1)

Refer to the exhibit.

```

1      ---
2  - hosts: {{ router }}
3    gather_facts: true
4    connection: local
5
6    tasks:
7      - ios_command
8        commands:
9          - show run
10         provider: "{{ router_credentials }}"
11         register: config
12
13     - copy:
14         content: "{{ config.stdout[0] }}"
15         dest: "etc/ansible/configs/command_{{ router_hostname }}.txt
16     ...

```

What is the effect of this Ansible playbook on an IOS router?

- A. A new running configuration is pushed to the IOS router.
- B. The current running configuration of the IOS router is backed up.
- C. The start-up configuration of the IOS router is copied to a local folder.
- D. A new start-up configuration is copied to the IOS router.

Answer: B

NEW QUESTION 234

- (Exam Topic 1)

A small company has 5 servers and 50 clients. What are two reasons an engineer should split this network into separate client and server subnets? (Choose two)

- A. Internet access to the servers will be denied on the router.
- B. A router will limit the traffic types between the clients and servers.
- C. Subnets will split domains to limit failures.
- D. A router will bridge the traffic between clients and servers.
- E. Subnets provide more IP address space for clients and servers.

Answer: AC

NEW QUESTION 238

- (Exam Topic 1)

Drag and drop the capability on the left onto the Cisco compute management platform that supports the capability on the right.

Multi-Cloud automation and orchestration platform for Cisco and third-party servers, networks, storage, and converged infrastructure.	UCS Manager
Software as a Service Platform that enables Cisco infrastructure management, automation and orchestration from anywhere.	UCS Director
Embedded software that enables Cisco server, fabric, and storage provisioning.	Intersight

- A. Mastered
- B. Not Mastered

Answer: A

Explanation:

Multi-Cloud automation and orchestration platform for Cisco and third-party servers, networks, storage, and converged infrastructure.	Embedded software that enables Cisco server, fabric, and storage provisioning.
Software as a Service Platform that enables Cisco infrastructure management, automation and orchestration from anywhere.	Multi-Cloud automation and orchestration platform for Cisco and third-party servers, networks, storage, and converged infrastructure.
Embedded software that enables Cisco server, fabric, and storage provisioning.	Software as a Service Platform that enables Cisco infrastructure management, automation and orchestration from anywhere.

NEW QUESTION 241

- (Exam Topic 1)
A developer needs to prepare the file README.md in the working tree for the next commit operation using Git. Which command needs to be used to accomplish this?

- A. git add README.md staging
- B. git -a README.md
- C. git add README.md
- D. git commit README.md

Answer: C

Explanation:

Reference: <https://teamtreehouse.com/community/committing-the-readmemd-file-to-repository>

NEW QUESTION 245

- (Exam Topic 1)
What are two characteristics of Bare Metal environments that are related to application deployment? (Choose two.)

- A. Provide the hypervisor to host virtual servers
- B. Specifically designed for container-based workloads.
- C. Provides workloads with access to hardware features
- D. Suitable for legacy application that do not support virtualization
- E. Not compatible with other cloud services such as PaaS or SaaS offerings.

Answer: CD

NEW QUESTION 248

- (Exam Topic 1)
Drag and drop the functionalities from the left onto correct networking devices on the right.

ports are different broadcast domain by default	Firewall
ports can be in the same broadcast domain	Load Balancer
uses traffic inspection to make routing decisions	Router
blocks networks traffic by default	Switch

- A. Mastered
 B. Not Mastered

Answer: A

Explanation:

1 – D, 2 – C, 3 – A, 4 – B

Reference: <https://geek-university.com/ccna/broadcast-domain-explained/>

NEW QUESTION 252

- (Exam Topic 1)

Before which process is code review performed when version control is used?

- A. committing code
 B. branching code
 C. merge of code
 D. checkout of code

Answer: C

NEW QUESTION 253

- (Exam Topic 1)

Drag and drop the element of the Finesse API on the left onto the description of its functionality on the right.

User	Represents a skill group in Unified CCE.
Dialog	Represents the current state of the system.
Media	Represents an agent, supervisor or administrator.
Queue	Represents a group of users.
Team	Represents a call and the participants if the media type is voice.
SystemInfo	Sends client-side logging to the Finesse Server.
ClientLogs	Represents a user's state in a non-voice Media Routing Domain.

- A. Mastered
 B. Not Mastered

Answer: A

Explanation:

1 – D, 2 – F, 3 – A, 4 – E, 5 – B, 6 – G, 7 - C

NEW QUESTION 256

- (Exam Topic 1)

A developer is writing an application that a REST API and the application requires a valid from the API which element of the response is used in the conditional check?

- A. URL
 B. Status code

- C. Link
- D. Body
- E. Headers

Answer: B

NEW QUESTION 260

- (Exam Topic 1)

Refer to the exhibit.

```
docker run -p 3000:5000 f877cbf2ff33
```

A process on the host wants to access the service running inside this Docker container. Which port is used to make a connection?

- A. only outbound connections between 3000 and 5000 are possible
- B. port 3000
- C. any port between 3000 and 5000
- D. port 5000

Answer: B

NEW QUESTION 265

- (Exam Topic 1)

Refer to Exhibit.

```
<books>
  <science>
    <biology>10.00</biology>
    <geology>9.00</geology>
    <chemistry>8.00</chemistry>
  </science>
  <math>
    <calculus>20.00</calculus>
    <algebra>12.00</algebra>
  </math>
</books>
```

Which JSON is equivalent to the XML-encoded data.

A)

```
{
  "books": {
    "science": {
      "biology": "10.00",
      "geology": "9.00",
      "chemistry": "8.00"
    },
    "math": {
      "calculus": "20.00",
      "algebra": "12.00"
    }
  }
}
```

B)


```
[ {  
  "books": {  
    "science": {  
      "biology": "10.00",  
      "geology": "9.00",  
      "chemistry": "8.00"  
    },  
    "math": {  
      "calculus": "20.00",  
      "algebra": "12.00"  
    }  
  }  
}]
```

C)

```
{  
  "books": [  
    "science", {  
      "biology": "10.00",  
      "geology": "9.00",  
      "chemistry": "8.00"  
    },  
    "math", {  
      "calculus": "20.00",  
      "algebra": "12.00"  
    }  
  ]  
}
```

D)

```
{  
  "books": [  
    "science": {  
      "biology": "10.00",  
      "geology": "9.00",  
      "chemistry": "8.00"  
    },  
    "math": {  
      "calculus": "20.00",  
      "algebra": "12.00"  
    }  
  ]  
}
```

- A. Option A
- B. Option B
- C. Option C
- D. Option D

Answer: A

NEW QUESTION 269

- (Exam Topic 1)

How does requesting a synchronous API operation differ from requesting an asynchronous API operation?

- A. clients poll for the status of the execution of operations
- B. clients subscribe to a webhook for operation results
- C. clients can access the results immediately
- D. clients receive responses with a task id for further processing

Answer: C

NEW QUESTION 271

- (Exam Topic 1)

What are two security benefits of a Docker-based application?

- A. easier to patch because Docker containers include only dependencies that the application requires
- B. prevents information leakage that can occur when unhandled exceptions are returned in HTTP responses
- C. allows for separation of application that traditionally run in the same host
- D. natively secures access to secrets that are used by the running application
- E. guarantees container images are secured and free of vulnerabilities

Answer: AC

NEW QUESTION 275

- (Exam Topic 1)

Which two statements are true about Cisco UCS manager, Cisco Intersight APIs? (Choose two.)

- A. Cisco Intersight API interactions can be encoded in XML or JSON and require an APIs key in the HTTP header for authentication.
- B. USC Director API interactions can be XML- or JSON-encoded and require an APLs key in the HTTP header for authentication.
- C. UCS manager API interactions are XML-encoded and require a cookie in the method for authentication.
- D. Cisco Intersight uses XML to encoded API interactions and requires an API key pair for authentication.
- E. UCS manager uses JSON to encode API interactions and utilizes Base64-encoded credentials in the HTTP header for authentication.

Answer: BC

Explanation:

Reference:

https://www.cisco.com/c/en/us/td/docs/unified_computing/ucs/ucs-director/rest-api-getting-started-guide/6-5/cis

https://www.cisco.com/c/en/us/td/docs/unified_computing/ucs/sw/api/b_ucs_api_book.pdf

NEW QUESTION 279

- (Exam Topic 1)

What are two advantages of the Model-view-controller software design pattern? (Choose two.)

- A. simplifies network automation
- B. allows for multiple views of the same model
- C. makes code easier to deploy using CI/CD pipelines
- D. reduces need for error handling
- E. separates responsibilities of the code, which makes future modifications easier

Answer: BE

NEW QUESTION 281

- (Exam Topic 1)

Which platform has an API that be used to obtain a list of vulnerable software on user devices?

- A. Cisco Umbrella
- B. Cisco Firepower
- C. Cisco Identity Services Engine
- D. Cisco Advanced Malware Protection

Answer: D

NEW QUESTION 285

- (Exam Topic 1)

Refer to the exhibit.

URL: https://<ASA_IP>/api/access/global/rules

Method: POST

Payload:

```
{
  "destinationAddress": {
    "kind": "IPv4Address",
    "value": "10.1.1.1"
  },
  "remarks": [ ],
  "active": true
  "permit": true,
  "sourceAddress": {
    "kind": "IPv4Address",
    "value": "192.168.1.1"
  }
}
```

Response Status Code: 400 Bad Request

{"messages":[{"level":"Error","code":"JSON-PARSE-ERROR","details":"Unexpected character ('\"' (code 34)):"

What caused the error in this API request?

- A. The API resource does not support the POST operation
- B. The API resource does not support JSON format payloads.
- C. The submitted JSON payload includes a field that is not supported by the API resource.
- D. The submitted JSON payload has a formatting issue

Answer: D

NEW QUESTION 287

- (Exam Topic 1)

The project is migrated to a new codebase, the "old_project" directory must be deleted. The directory has multiple read-only files, and it must be deleted recursively without prompting for confirmation. Which bash command must be used?

- A. `rm -rf old_project`
- B. `rm -r old_project`
- C. `rmdir -p old_project`
- D. `rmdir old_project`

Answer: A

NEW QUESTION 289

- (Exam Topic 1)

Which description of a default gateway is true?

- A. It is a device that receives IP packets that have no explicit next-hop in the routing table.
- B. It is a feature that translates between public and private addresses.
- C. It is a security feature that denies certain traffic.
- D. It is a device that receives Layer 2 frames with an unknown destination address.

Answer: A

Explanation:

Refe

<https://www.certificationkits.com/cisco-certification/ccna-articles/cisco-ccna-intro-to-routing-basics/cisco-ccna>

NEW QUESTION 294

- (Exam Topic 1)

Which two statements about JSON and XML are true? (Choose two.)

- A. JSON objects are collection of key value pair.
- B. The syntax of JSON contains tags, elements, and attributes.
- C. JSON arrays are an unordered set of key value pairs.
- D. The syntax of XML contains tags, elements, and attributes.
- E. XML objects are collections of key-value pairs.

Answer: AD

NEW QUESTION 299

- (Exam Topic 1)

Which two items are Cisco DevNet resources? (Choose two.)

- A. TAC support
- B. Bitbucket
- C. Sandbox
- D. Software research
- E. API Documentation

Answer: CE

Explanation:

Reference: <https://developer.cisco.com/>

NEW QUESTION 301

- (Exam Topic 1)

Refer to the exhibit.

```
List the networks in a Meraki organization:

GET https://api.meraki.com/api/v0/organizations/<org_id>/networks
Response code: 200
Response body: [ {
  "id": <network_id>,
  "name": "Test Network",
  "organization_id": <new_org_id>,
  "type": "wireless",
  "timeZone": "America/Los_Angeles",
  "tags": " test "
} ]
```

Fill in the blanks to complete the cURL command to the list of networks in the Meraki organization with an id of 384279060

```
curl -X GET -L \
--url https://api.meraki.com/api/v0/[ ]/[ ]/[ ] \
-H 'X-Cisco-Meraki-API-Key: '$meraki_api_key
```

- A. Mastered
- B. Not Mastered

Answer: A

Explanation:

```
"organization_id": <new_org_id>,
"type": "wireless",
"timeZone": "America/Los_Angeles",
"tags": " test "
} ]
```

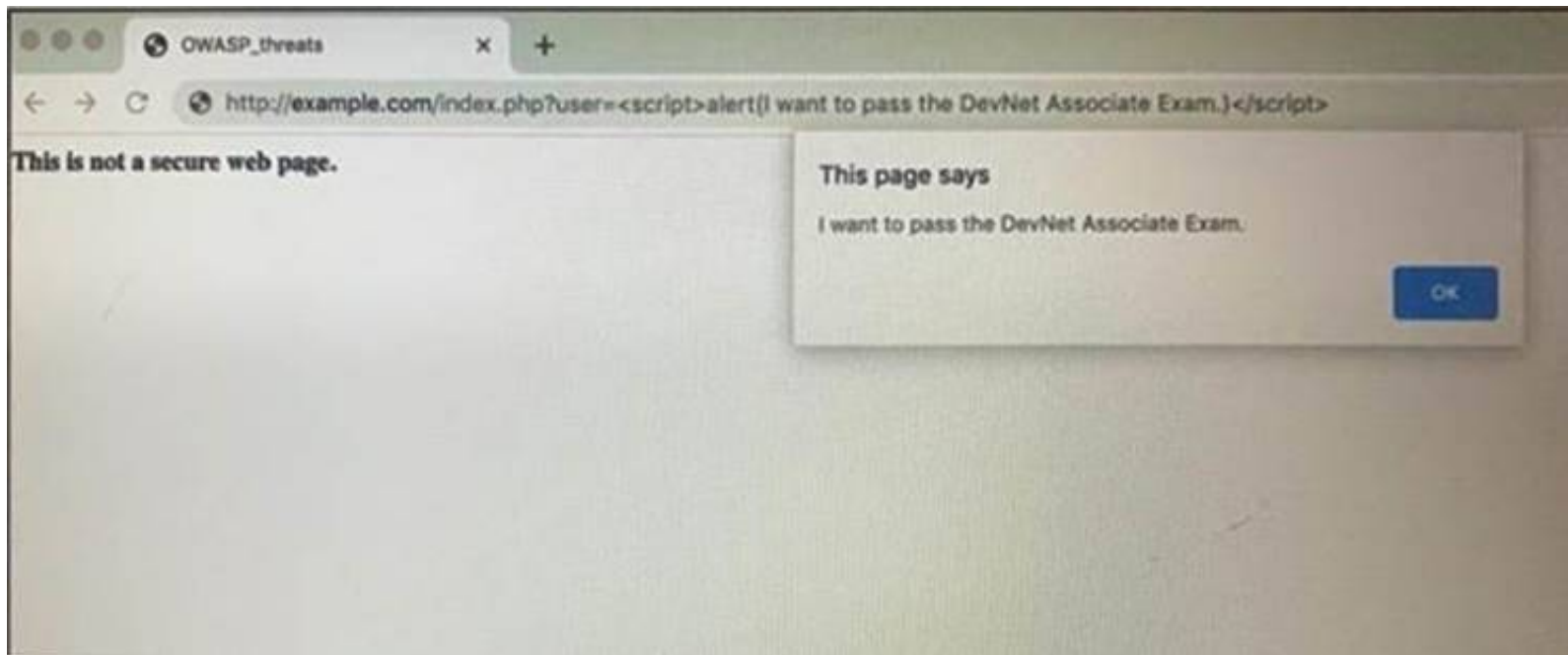
t. Fill in the blanks to complete the cURL command to list the networks in the Meraki organization with an Id of 384279060:

```
eraki.com/api/v0/[organizations] / [384279060] / [networks] \
ki-API-Key: '$meraki_api_key
```

NEW QUESTION 306

- (Exam Topic 1)

Refer to the exhibit.



Which OWASP threat does this example demonstrate?

- A. broken access control
- B. SQL injection
- C. man-in-the-middle
- D. cross-site scripting

Answer: D

NEW QUESTION 307

- (Exam Topic 1)

Refer to the exhibit.

```
#!/bin/bash
read ndir
while [ -d "$ndir" ]
do
cd $ndir
done
mkdir $ndir
```

What is the action of the Bash script that is shown?

- A. The script waits until input is entered
- B. If the directory exists, the script goes into it until there is no directory with the same name, then it creates a new directory.
- C. The script goes into the directory called "\$ndir" and makes a new directory called "\$ndir"
- D. The script waits until input is entered, then it goes into the directory entered and creates a new directory with the same name.
- E. For all directories in the current folder
- F. The script goes into directory and makes a new directory.

Answer: A

NEW QUESTION 309

- (Exam Topic 1)

Which Cisco DevNet resource allows access to products in a development lab to explore, learn, and build applications that use Cisco APIs?

- A. DevNet communities
- B. DevNet code Exchange
- C. DevNet Automation Exchange
- D. DevNet sandbox

Answer: D

Explanation:

Reference: <https://developer.cisco.com/site/sandbox/>

NEW QUESTION 310

- (Exam Topic 1)

Which way should be used to safely store the API keys?

- A. In an environment variable unique to the system database
- B. Encrypted in a configuration file that is separate from the code
- C. Encrypted in the code in a function
- D. Plain text in the code as a constant

Answer: B

NEW QUESTION 315

- (Exam Topic 1)

What is the outcome of executing this command?

```
git clone ssh://john@exmaple.com/path/to/my-project_git
```

- A. Creates a local copy of a repository called “my project”
- B. Creates a copy of a branch called “my project”
- C. Initiates a new Git repository called “my project”
- D. Creates a new branch called “my project”

Answer: A

Explanation:

Reference: <https://www.atlassian.com/git/tutorials/setting-up-a-repository/git-clone>

NEW QUESTION 316

- (Exam Topic 1)

Drag and drop the network automation interfaces from the left onto the transport protocols that they support on the right.

SSH	gRPC
HTTP	
HTTP/2	NETCONF
HTTPS	
	RESTCONF

- A. Mastered
- B. Not Mastered

Answer: A

Explanation:

gRPC = C, NETCONF = A, RESTCONF = B, D OR

NEW QUESTION 318

- (Exam Topic 1)

When a Cisco IOS XE networking device is configured using RESTCONF, what is the default data-encoding method?

- A. XML
- B. x-form-encoding
- C. YANG
- D. YAML

Answer: A

NEW QUESTION 321

- (Exam Topic 1)

Which two encoding formats do YANG interfaces support?

- A. JSON
- B. XML
- C. XHTML
- D. Plain text
- E. BER

Answer: AB

Explanation:

Reference:

https://www.cisco.com/c/en/us/td/docs/ios-xml/ios/prog/configuration/171/b_171_programmability_cg/model_d

NEW QUESTION 325

- (Exam Topic 1)

Drag and drop the HTTP status codes from the left onto the correct descriptions on the right.

400	Unauthorized
401	Not Found
403	Bad Request
404	Forbidden

- A. Mastered
- B. Not Mastered

Answer: A

Explanation:

1 – B, 2 – D, 3 – A, 4 – C

Reference:

<https://www.cisco.com/c/en/us/support/docs/security/web-security-appliance/118217-troubleshoot-wsa-00.html>

NEW QUESTION 329

- (Exam Topic 1)

Drag and drop the Python code from the left onto the correct step on the right to call a REST API.

<pre>response = requests.post(url, data=json.dumps(payload), \ headers=header, verify=False)</pre>	Step 1 – Import the correct libraries.
<pre>ticket = r_json["Token"] print (ticket)</pre>	Step 2 – Declare the necessary variable.
<pre>(_json = response.json() print(r_json)</pre>	Step 3 – Send the HTTP Request.
<pre>import requests import json</pre>	Step 4 – Format and display the response in JSON readable format.
<pre>controller = 'devnetapi.cisco.com/sandbox/dnacenter' url = 'https://' + controller + '/dna/system/api/v1/auth/token' payload = { 'username': 'devnetuser', 'password': 'pa55word' } header = { 'Content-type': 'application/json' }</pre>	Step 5 – Parse the response to display the Service Ticket.

- A. Mastered
- B. Not Mastered

Answer: A

Explanation:

<pre>response = requests.post(url, data=json.dumps(payload), \ headers=header, verify=False)</pre>	<pre>import requests import json</pre>
<pre>ticket = r_json["Token"] print (ticket)</pre>	<pre>controller = 'devnetapi.cisco.com/sandbox/dnacenter' url = 'https://' + controller + '/dna/system/api/v1/auth/token' payload = { 'username': 'devnetuser', 'password': 'pa55word' } header = { 'Content-type': 'application/json' }</pre>
<pre>(_json = response.json() print(r_json)</pre>	<pre>response = requests.post(url, data=json.dumps(payload), \ headers=header, verify=False)</pre>
<pre>import requests import json</pre>	<pre>(_json = response.json() print(r_json)</pre>
<pre>controller = 'devnetapi.cisco.com/sandbox/dnacenter' url = 'https://' + controller + '/dna/system/api/v1/auth/token' payload = { 'username': 'devnetuser', 'password': 'pa55word' } header = { 'Content-type': 'application/json' }</pre>	<pre>ticket = r_json["Token"] print (ticket)</pre>

NEW QUESTION 330

- (Exam Topic 1)

What is the Git command to delete a local branch named “experiment” without a warning?

- A. git branch -n experiment
- B. git branch -rm experiment
- C. git branch -f experiment
- D. git branch -D experiment

Answer: D

Explanation:

Reference: <https://www.atlassian.com/git/tutorials/using-branches>

NEW QUESTION 331

- (Exam Topic 1)

Fill in the blanks to complete the statement.

Cisco DNA provide the capability to send an HTTP _____ request to the API endpoint https://DNA-c_API_ADDRESS/api/vi/network-device/ and receive the network _____ list in _____ format.

- A. Mastered
- B. Not Mastered

Answer: A

Explanation:

Solution below as

Cisco DNA Center provides the capability to send an HTTP GET request to the API endpoint https://DNA-c_API_ADDRESS/api/v1/network-device/ and receive the network device list in JSON format.

NEW QUESTION 332

- (Exam Topic 1)

Which product provides network controller-level management features?

- A. Cisco DNA Center
- B. Cisco NX-OS
- C. Cisco UCS Manager
- D. Cisco ISE

Answer: A

Explanation:

Reference: <https://www.cisco.com/c/en/us/products/cloud-systems-management/index.html>

NEW QUESTION 333

- (Exam Topic 1)

Refer to the exhibit.

A -

bash-3.2\$ curl -H "Content-Type: application/json" -H "Authorization: Bearer Fj2zzykEa09lic9GK2j8LtE1HklH6oRHPQdw1Pat60i7ndtHHnWzL2b5PQmG14Kk_B9ei5ISAClY7-NarA-2n9H-tGgt-SxQ39iDejgcs" -i -d "{ \"roomId\": \"Y2geK53sjELknosrC7SwQ5ZGL99pHgiuScB7DfNvU8Xx4wDKLiPORcEkryAnM3QmK9LQZsPOG4\", \"text\": \"test2\" }" -X POST https://api.ciscopark.com/v1/messages

B -

C -

D -

HTTP/1.1 200 OK
Via: 1.1 linker
Transfer-Encoding: chunked
TrackingID: ROUTER_5E0FE283-63EB-01BB-00ED-806BF1BD00ED

E -

Date: Sat, 01 Jan 2020 00:55:31 GMT
Server: Redacted
Content-Type: application/json; charset=UTF-8
Vary: Accept-Encoding
Strict-Transport-Security: max-age=63072000; includedSybDomains; preload

F -

{\"id\":\"YCpJf3aVovyBYcbn7lSdesNkKcgN5tlExdc6dcnPtl4Va05NfCh9MG17j0tWXQLoIPuoJ73uu7JdoXq9\", \"roomId\":\"Y2geK53sjELknosrC7SwQ5ZGL99pHgiuScB7DfNvU8Xx4wDKLiPORcEkryAnM3QmK9LQZsPOG4\", \"roomType\":\"group\", \"text\":\"test2\", \"personId\":\"YcgYzL6Xgtyfw81XXwqfKf7whfj23KuqWt4kLWkbb3JwEJBlVMZOkIvyDdFoppb0einNj111FcMyy5wD\", \"personEmail\":\"user@webex.com\", \"created\":\"2020-01-01T00:55:32.492Z\"}

Drag and drop the descriptors from the left onto the correct parts of the API request and response on the right.

Response Headers	A
HTTP Request	B
HTTP Response	C
Request Payload	D
Request Headers	E
Response Payload	F

- A. Mastered
- B. Not Mastered

Answer: A

Explanation:

A – E, B – D, C – B, D – C, E – A, F – F

NEW QUESTION 336

- (Exam Topic 1)

A 401 HTTP response code is returned when calling a REST API. What is the error state identified by this response code?

- A. The server cannot process the request as it has detected an issue in the request syntax or body.
- B. The server accepted the request but the client is not authorized for this content.
- C. The request has not been accepted because it requires authentication.
- D. The server cannot find the requested resource because the path specified is incorrect.

Answer: C

Explanation:

Reference:

<https://blog.restcase.com/rest-api-error-codes-101/#:~:text=A%20401%20error%20response%20indicates,crede>

NEW QUESTION 337

- (Exam Topic 1)

Which two NETCONF operations cover the RESTCONF GET operation? (Choose two.)

- A. <get>
- B. <edit>
- C. <get-update>
- D. <modify-config>
- E. <get-config>

Answer: AE

Explanation:

Reference:

<https://www.cisco.com/c/en/us/support/docs/storage-networking/management/200933-YANG-NETCONF-Conf>

NEW QUESTION 340

- (Exam Topic 1)

Which is an advantage of using network programmability?

- A. It removes CLI access for devices.
- B. It provides for more scalable and replicable network provisioning.
- C. Manual configuration is faster.
- D. No cloud abstraction occurs.

Answer: B

NEW QUESTION 343

- (Exam Topic 1)

On which port does NETCONF operate by default?

- A. 23
- B. 443
- C. 822
- D. 830

Answer: D

NEW QUESTION 345

- (Exam Topic 1)

Which platform is run directly using a hypervisor?

- A. Virtual
- B. Bare metal systems
- C. Containers
- D. Applications

Answer: C

NEW QUESTION 349

- (Exam Topic 1)

A developer is reviewing a code that was written by a colleague. It runs fine, but there are many lines of code to do a seemingly simple task repeatedly. Which action organizes the code?

- A. Refactor the code by removing any unnecessary tests
- B. Using functions, rewrite any pieces of code that are repeated
- C. Reverse engineer and rewrite the code logic
- D. Modify the code to use loops

Answer: B

NEW QUESTION 350

- (Exam Topic 1)

What is the first development task in test-driven development?

- A. Write code that implements a desired function.
- B. Write a failing test case for a desired function.
- C. Write a passing test case for existing code.
- D. Reverse engineer the code for a desired function.

Answer: B

Explanation:

Reference:

<https://technologyconversations.com/2013/12/20/test-driven-development-tdd-example-walkthrough/>

NEW QUESTION 353

- (Exam Topic 1)

Which line is an example of the start of a chunk from a unified diff?

- A. @@ -90,88 +20191008T1349@@
- B. @@ -20191007T1200 +88,90 @@
- C. @@ -20191007T1200 +20191008T1349@@
- D. @@ -88,10 +88,6 @@

Answer: D

Explanation:

Reference:

<https://unix.stackexchange.com/questions/252927/what-do-the-numbers-in-the-line-mean-in-output-of-diff>

NEW QUESTION 354

- (Exam Topic 1)

Refer to the exhibit.

```
$ pyang -f tree Cisco-IOS-XE-native.yang
module: Cisco-IOS-XE-native
  +--rw native
    +--rw logging
      +--rw monitor|
        +--rw severity?  logging-level-type

$ curl --insecure -v -X PATCH \
  "https://ios-xe-mgmt-latest.cisco.com:9443/restconf/data/Cisco-IOS-XE-native:native" \
  -H 'Authorization: Basic ZGV2ZWxvcGVyOkMxc2NvMTIzNDU=' -H 'Accept: application/yang-data+json' \
  -H 'Content-Type: application/yang-data+json' \
  -d '{ "Cisco-IOS-XE-native:native" : { "logging" : { "monitor" : { "severity" : "alerts" }} } }'
> ...
< ...
< HTTP/1.1 204 No Content
```

The definition of the YANG module and a RESTCONF query sent to a Cisco Ioc XE device is shown. Which statement is correct if the RESTCONF interface responds with a 204 status code?

- A. The query failed at retrieving the logging seventy level.
- B. The query failed to set the logging seventy level due to an invalid path.
- C. The query retrieved the logging seventy level.
- D. The query updated the logging seventy level or created it if not present on the device.

Answer: D

Explanation:

Reference:

https://www.cisco.com/c/en/us/td/docs/ios-xml/ios/prog/configuration/1611/b_1611_programmability_cg/restco

NEW QUESTION 355

- (Exam Topic 1)

Refer to the exhibit.

```
---
- hosts: switch2960cx
  gather_facts: no

  tasks:
    - ios_l2_interface:
      name: GigabitEthernet0/1
      state: unconfigured

    - ios_l2_interface:
      name: GigabitEthernet0/1
      mode: trunk
      native_vlan: 1
      trunk_allowed_vlans: 6-8
      state: present

    - ios_vlan:
      vlan_id: 6
      name: guest-vlan
      interfaces:
        - GigabitEthernet0/2
        - GigabitEthernet0/3

    - ios_vlan:
      vlan_id: 7
      name: corporate-vlan
      interfaces:
        - GigabitEthernet0/4

    - ios_vlan:
      vlan_id: 8
      name: iot-vlan
      interfaces:
        - GigabitEthernet0/5
```

Which two statements describe the configuration of the Ansible script if run? (Choose two.)

- A. Traffic on port 0/2 and 0/3 is connected to port 0/6.
- B. Traffic from ports 0/2 to 0/5 can flow on port 0/1 due to the trunk.
- C. Traffic can flow between ports 0/2 to 0/5 due to the trunk on port 0/1.
- D. GigabitEthernet0/2 and GigabitEthernet0/3 are access ports for VLAN 6.
- E. GigabitEthernet0/1 is left unconfigured.

Answer: BD

NEW QUESTION 360

.....

Thank You for Trying Our Product

We offer two products:

1st - We have Practice Tests Software with Actual Exam Questions

2nd - Questions and Answers in PDF Format

200-901 Practice Exam Features:

- * 200-901 Questions and Answers Updated Frequently
- * 200-901 Practice Questions Verified by Expert Senior Certified Staff
- * 200-901 Most Realistic Questions that Guarantee you a Pass on Your First Try
- * 200-901 Practice Test Questions in Multiple Choice Formats and Updates for 1 Year

100% Actual & Verified — Instant Download, Please Click
[Order The 200-901 Practice Test Here](#)