

UiPath-ADAv1 Dumps

UiPath Automation Developer Associate v1 Exam

<https://www.certleader.com/UiPath-ADAv1-dumps.html>



NEW QUESTION 1

What describes how the Excel Application Scope activity interacts with a Microsoft Excel file?

- A. Works only with xls files and Excel does not need to be installed
- B. Works with.xlsx files and Excel does not need to be installed
- C. Works only with xlsx files and Excel must be installed
- D. Works with xls and xlsx files and Excel must be installed

Answer: D

Explanation:

The Excel Application Scope activity interacts with a Microsoft Excel file in the following way: it works with xls and xlsx files and Excel must be installed. The Excel Application Scope activity opens an Excel workbook and provides a scope for Excel activities. When the execution of this activity ends, the specified workbook and the Excel application are closed². The Excel Application Scope activity can work with xls (Excel 97-2003 Workbook) and xlsx (Excel Macro-Enabled Workbook) file formats³. However, the Excel Application Scope activity requires Microsoft Excel to be installed on the machine where the automation is running, as it uses the Excel interop assembly⁴. Therefore, the Excel Application Scope activity cannot work with.xlsx (Excel Workbook) files or without Excel installed.

References: Excel Application Scope, File formats that are supported in Excel, and Excel Application Scope - UiPath Activities Guide from UiPath documentation and Microsoft support.

NEW QUESTION 2

What is a pre-requisite for running InitAllApplications TestCase?

- A. Invoke CloseAllApplications XAML file in Given.
- B. Invoke KillAllProcesses XAML file in Given.
- C. Invoke InitAllSettings XAML file in Given.
- D. Invoke SetTransactionStatus XAML file in Given.

Answer: C

Explanation:

The InitAllApplications TestCase is used to test the initialization of all the applications that are required for the automation process¹. The pre-requisite for running this TestCase is to invoke the InitAllSettings XAML file in the Given section of the TestCase². The InitAllSettings file is responsible for reading the configuration data from the Config.xlsx file and storing it in a dictionary variable³. This data is then used by the InitAllApplications file to open and log in to the applications using the credentials and URLs from the dictionary variable⁴.

NEW QUESTION 3

A developer has published a new library from UiPath Studio to the Orchestrator feed. Another developer on the team is connected to the same Orchestrator where the library has been published.

What steps are necessary for adding this library as a dependency in a project?

- A. Open the Manage Packages Window and ensure the Orchestrator feed is enable
- B. In the Imports Panel in Studio, search for the package by name, and then install the package.
- C. Open the Manage Packages Window and install UiPath.System.Activities
- D. Drag and Drop the Invoke Com Method activity and input the library name as a parameter.
- E. Open the Manage Packages Window and install UiPath.System.Activities
- F. Drag and Drop the Invoke Method activity and input the library name as a parameter.
- G. Open the Manage Packages Window and ensure the Orchestrator feed is enable
- H. Search for the package by name in the Search bar and then install the package.

Answer: D

Explanation:

This is the correct way to add a library that has been published to the Orchestrator feed as a dependency in a project. The Manage Packages Window allows the developer to browse, install, update, or remove packages from various sources, such as the Orchestrator feed, the Official feed, or the Local feed. The Orchestrator feed is the default location where libraries are published from Studio, and it can be enabled or disabled by clicking on the Settings button in the Manage Packages Window. The Search bar allows the developer to find the desired package by name, version, or description. The Install button allows the developer to add the package as a dependency to the project. The other options are incorrect because they do not use the Orchestrator feed, or they do not use the correct activity to invoke the library. References: About Libraries, Managing Dependencies, Publishing a Library, Invoking a Workflow

NEW QUESTION 4

What is the output type returned when using a Get Test Data Queue Item activity?

- A. Dictionary
- B. Dictionary
- C. Object
- D. QueueItem

Answer: A

Explanation:

The Get Test Data Queue Item activity is used to retrieve a test data queue item from Orchestrator and store it in a variable. The output type of the variable is Dictionary, which means that it is a collection of key-value pairs that can be accessed by using the key name. For example, if the test data queue item contains the fields Name, Age, and Gender, then the output variable can be used to get the values of these fields by using expressions like outputVar("Name"), outputVar("Age"), or outputVar("Gender"). (UiPath Studio documentation¹)

References:

? 1: Get Test Data Queue Item - UiPath Activities.

NEW QUESTION 5

What is the use of job priorities in unattended automations within UiPath Orchestrator?

- A. To determine which processes should be executed first when dealing with multiple jobs.
- B. To sort and organize tasks within a folder.
- C. To create job dependencies that must be completed before new job execution.
- D. To determine machine resource allocation among processes.

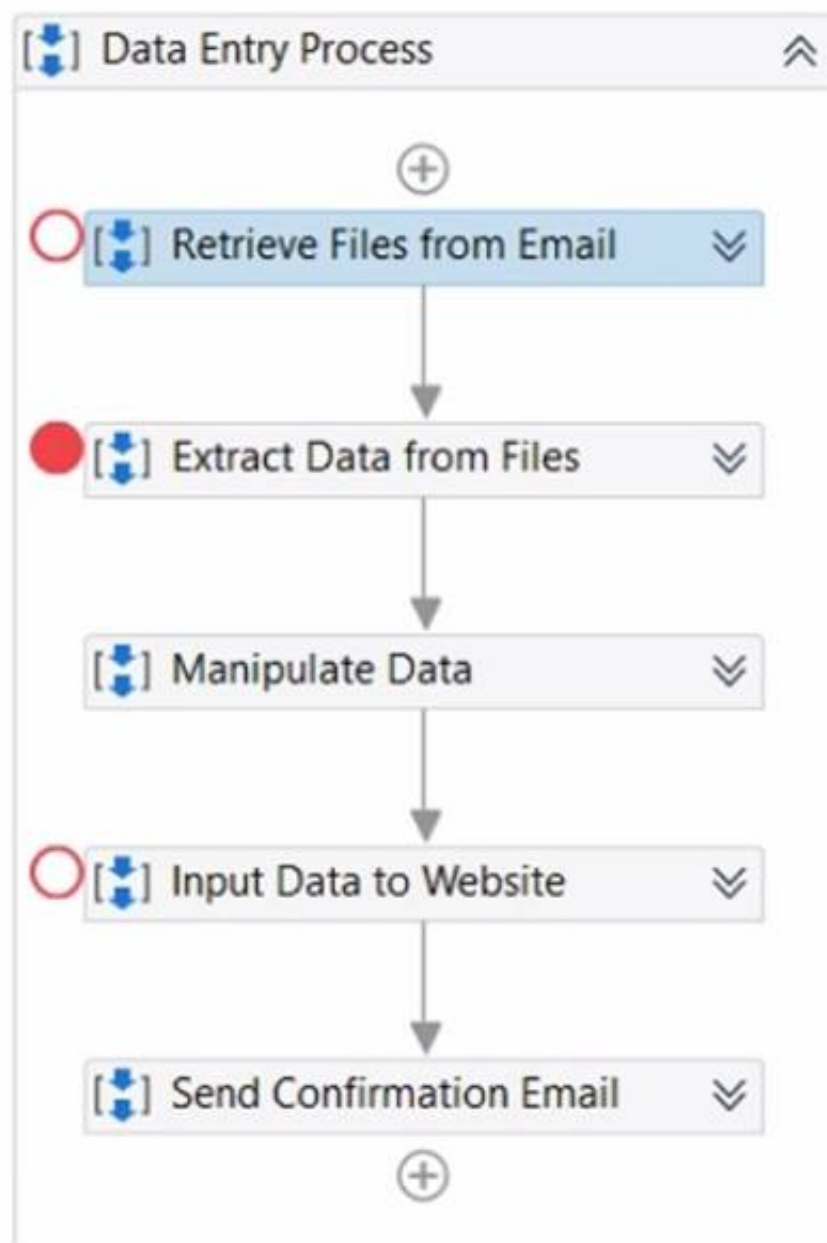
Answer: A

Explanation:

Job priorities in unattended automations are used to assign different levels of importance to the processes that are triggered by the Orchestrator¹. The job priority can be set as High, Normal, or Low when creating or editing a trigger². The Orchestrator will execute the jobs based on their priority and the availability of robots³. This feature helps to optimize the performance and efficiency of unattended automations.
<https://forum.uipath.com/t/priority-levels-jobs-and-queue-items/273883>

NEW QUESTION 6

A developer executes the following workflow in Debug mode with "Continue on Exception " enabled.



How many times will the workflow pause the execution?

- A. 1
- B. 2
- C. 3

Answer: B

Explanation:

The workflow will pause the execution only once when it is executed in Debug mode with "Continue on Exception" enabled. Debug mode is a mode of execution that allows the developer to test and troubleshoot the workflow by using various debugging tools, such as breakpoints, step actions, and output messages⁴. "Continue on Exception" is a debugging option that enables the execution to continue even if an exception is encountered, without displaying the error message or stopping at the faulty activity⁵. In the workflow, there are two activities that can throw exceptions: the "Throw" activity, which throws a custom exception with the message "This is an exception", and the "Write Line" activity, which writes the value of the "Var" variable to the Output panel. The "Var" variable is not initialized, so it has a null value by default. When the "Write Line" activity tries to write the null value, it throws a `NullReferenceException`, as explained in the previous question. However, since the "Continue on Exception" option is enabled, the execution does not stop at the "Write Line" activity, but continues to the next activity, which is the "Throw" activity. The "Throw" activity throws the custom exception, which is caught by the "Catch" section of the "Try Catch" activity. The "Catch" section contains a "Log Message" activity, which writes the exception message to the Output panel. The execution then moves to the "Finally" section, which contains a "Write Line" activity with the text "This is the end". The workflow then ends successfully. The only time the execution pauses is when it reaches the breakpoint that is set at the "Throw" activity. A breakpoint is a debugging tool that allows the developer to pause the execution at a specific activity and inspect the values of the variables and arguments, as well as the output messages⁶. The developer can then resume the execution by using the step actions or the continue button⁷. Therefore, the workflow will pause the execution only once at the breakpoint, and not at the exceptions, as they are ignored by the "Continue on Exception" option. References: Debugging a Workflow, Debugging Actions, Breakpoints, and Continue on Exception from UiPath documentation.

NEW QUESTION 7

DRAG DROP

A developer finished creating an automation project in UiPath Studio 2021.10. What is the recommended sequence of steps that should be performed to publish the package to Orchestrator 2021.10?

Instructions: Drag the Description found on the left and drop on the correct Step found on the right

Description	Step Sequence
Select an Orchestrator feed as the "Publish to" location and then click the "Publish" button	Step 1
Navigate to the Design Ribbon and then click the "Publish" button	Step 2
Validate that the "Info" dialog box displays and shows the package version number	Step 3
Add the Release Notes and ensure the version is incremented	Step 4

- A. Mastered
- B. Not Mastered

Answer: A

Explanation:

The recommended sequence of steps that should be performed to publish the package to Orchestrator 2021.10 is:

- ? Step 1 = Navigate to the Design Ribbon and then click the "Publish" button
- ? Step 2 = Select an Orchestrator feed as the "Publish to" location and then click the "Publish" button
- ? Step 3 = Add the Release Notes and ensure the version is incremented
- ? Step 4 = Validate that the "Info" dialog box displays and shows the package version number

This sequence will ensure that the developer can publish the automation project to the Orchestrator feed of their choice, add some notes about the changes made, and verify that the package is successfully published with the correct version number. <https://docs.uipath.com/orchestrator/standalone/2021.10/user-guide/about-packages>

NEW QUESTION 8

DRAG DROP

A developer wants to invoke a workflow in Main.xaml called ProcessPurchaseOrders.xaml. Data needs to be passed to and from the invoked workflow. What is the correct sequence of steps the developer needs to perform?

Instructions: Drag the Description found on the left and drop on the correct Step found on the right

Description	Step Sequence
Open the ProcessPurchaseOrders.xaml file and create the arguments	Step 1
Pass the values of the arguments to/from the variables in the Main.xaml file	Step 2
Create the ProcessPurchaseOrders.xaml file	Step 3
Invoke the ProcessPurchaseOrders.xaml file in the Main.xaml file and click Import Arguments	Step 4

- A. Mastered
- B. Not Mastered

Answer: A

Explanation:

The correct sequence of steps the developer needs to perform is:

- ? Step 1 = Create the ProcessPurchaseOrders.xaml file
- ? Step 2 = Open the ProcessPurchaseOrders.xaml file and create the arguments
- ? Step 3 = Invoke the ProcessPurchaseOrders.xaml file in the Main.xaml file and click Import Arguments
- ? Step 4 = Pass the values of the arguments to/from the variables in the Main.xaml file

This sequence will ensure that the developer can create a reusable workflow, invoke it from the main workflow, and pass data between them using arguments.

<https://forum.uipath.com/t/import-arguments-in-invoke-workflow-file/1923>

<https://forum.uipath.com/t/pass-arguments-invoke/132595>

NEW QUESTION 9

What happens when the area selection feature in the UiPath Computer Vision wizard is used?

- A. The selected area is automatically resized to fit all UI elements within it.
- B. A portion of the application UI can be selected, which is helpful when dealing with multiple fields bearing the same label.
- C. The selected area is treated as a single UI element, with no further analysis of its contents.
- D. A duplicated UI can be selected, and the copy is modified in the automation process.

Answer: B

Explanation:

The area selection feature in the UiPath Computer Vision wizard is used to refine the scope

of the UI elements that are detected by the Computer Vision activities¹. By using this feature, you can select a specific region of the application UI that you want to automate, and the wizard will only show the UI elements within that region. This is helpful when dealing with multiple fields bearing the same label, such as

“Name” or “Address”, as you can select only the field that you want to interact with². The selected area is not automatically resized, treated as a single UI element, or duplicated by the wizard. References:

? Can we change the selector on computer vision? forum post from UiPath

Community

? Computer Vision activities documentation from UiPath

? Computer Vision Recording forum post from UiPath Community

? AI Computer Vision for RPA product page from UiPath

? The New UiPath AI Computer Vision Is Now in Public Preview blog post from UiPath

NEW QUESTION 10

Where in the REFramework template project is the "SetTransactionStatus.xaml" invoked?

- A. In the Finally section of the Try Catch activity in the Process Transaction state.
- B. In the Try section of the Try Catch activity in the End Process state.
- C. In the Try and Catches sections of the Try Catch activity in the Process Transaction state.
- D. In the Catches section of the Try Catch activity in the Process Transaction state.

Answer: A

Explanation:

The SetTransactionStatus.xaml file is invoked in the Finally section of the Try Catch activity in the Process Transaction state of the REFramework template project. This file is responsible for setting the status of the current transaction item based on the outcome of the process. It also closes all applications that are used by the process and logs relevant information. (UiPath Studio - REFramework - UiPath Academy)

References:

? Studio - REFramework - UiPath Documentation Portal

? UiPath Studio - REFramework - UiPath Academy

? REFramework documentation.pdf - Google Drive

NEW QUESTION 10

A developer created an automation which scrapes data from PDF reports. The reports have the same structure and the title format is always "Report X - PDF" where X is a number from 1 to 100. Only one report will be open at a time but other PDF files may be open on the desktop.

What is the recommended method to ensure the selector identifies the correct PDF to use?

- A. Use the * wildcard character in place of the idx attribute value
- B. Use the idx attribute value in the selector to increment for each file
- C. Use the * wildcard character in place of the title attribute value
- D. Use the * wildcard character in place of the "X" in the title attribute value

Answer: D

Explanation:

The recommended method to ensure the selector identifies the correct PDF to use is to use the * wildcard character in place of the “X” in the title attribute value.

The * wildcard character is a symbol that can replace zero or more characters in a string. It can be used to handle dynamic elements in a selector, such as the title of a PDF file that changes for each report². For example, if the selector for the PDF file is:

```
<html title='Report X - PDF' />
```

Then the selector can be modified as:

```
<html title='Report * - PDF' />
```

This selector will match any PDF file that has a title starting with “Report” and ending with “PDF”, regardless of the number in between. This way, the selector can identify the correct PDF file to use, even if other PDF files are open on the desktop, as long as only one report is open at a time.

References: Selectors with Wildcards and Wildcards in selector from UiPath documentation and forum.

NEW QUESTION 11

Once "Library A" has been imported as a dependency in the current project, how can the UI Object Repository defined in "Library A" be accessed?

- A. The Object Repository is only available in a Library.
- B. The Object Repository needs to be exported as a UI Library and imported in the Process for it to become available.
- C. The Object Repository will automatically be available in the Process.
- D. The Object Repository cannot be passed between a Process and a Library.

Answer: C

Explanation:

The UI Object Repository is a feature that allows you to store and reuse UI elements across different automation projects¹. A UI Library is a type of project that contains UI elements and workflows that can be used as dependencies in other projects². When you import a UI Library as a dependency in your current project, the UI Object Repository defined in the UI Library will automatically be available in your current project³. You can access the UI elements from the Object Repository panel in Studio and use them in your activities⁴. Therefore, the correct answer is C. The other options are incorrect because they do not reflect the actual behavior of the UI Object Repository and the UI Library.

References: Object Repository documentation, Reusing Objects and UI Libraries documentation, Object Repository course, [Object Repository in Studio course].

NEW QUESTION 14

Which of the following workflow names is correct, based on best practices?

- A. Transactionstatus
- B. Workflow1
- C. creation_of_file
- D. ScrapeFilteredStocks

Answer: D

Explanation:

The correct workflow name, based on best practices, is ScrapeFilteredStocks. This is because it follows the Pascal Case convention, which means that the first letter of each word is capitalized and there are no spaces or underscores between the words. This convention makes the workflow name easy to read and understand, as well as consistent with the UiPath standards. The other workflow names are incorrect because they either use lower case, snake case, or have no meaningful description. For example, Transactionstatus should be TransactionStatus, Workflow1 should be more descriptive, and creation_of_file should be CreationOfFile.

References:

? Naming Rules and Best Practices - Studio - UiPath Community Forum

? Workflow Design - UiPath Studio

NEW QUESTION 18

How does UiPath Integration Service benefit automation developers?

- A. By standardizing authorization and authentication, managing API connections, and enabling faster integration into SaaS platforms.
- B. By offering a comprehensive, unified platform dedicated solely to UI automation, enabling seamless integration with third-party applications.
- C. By enabling developers to create custom UI elements for applications without using APIs.
- D. By substituting the requirement for API automation with UI automation capabilities, delivering a more manageable and user-friendly approach, allowing users to streamline their processes efficiently and effectively facilitating a more rapid integration process.

Answer: A

Explanation:

The UiPath Integration Service is a new feature that seamlessly combines world-class UI and API automation, allowing both capabilities to be centrally accessed within the same integration design environment¹². This empowers developers to flexibly capture all their automation opportunities, even allowing them to deploy both types of integrations within a single automation¹². The UiPath Integration Service also provides the following benefits for automation developers¹²:

? By standardizing authorization and authentication, it simplifies the security protocols for connecting to different systems and applications, such as Salesforce, SAP, or Google G Suite².

? By managing API connections, it enables developers to create, modify, reuse, and share connections to multiple systems using pre-built connectors or custom connectors².

? By enabling faster integration into SaaS platforms, it allows developers to leverage server-side event triggers to start automations based on data updates, insertions, or deletions in external applications².

References:

? Introducing UiPath Integration Service | UiPath.

? New UiPath Integration Service | UiPath.

NEW QUESTION 19

A developer wants to create a process which runs in the background and uses Excel activities Which property of the Excel Application Scope activity must be configured for the process to run in the background?

- A. Private
- B. Visible
- C. Save changes
- D. Read-only

Answer: B

Explanation:

The Visible property of the Excel Application Scope activity determines whether the Excel file is opened in the foreground or in the background. If the Visible property is set to True (default value), the Excel file is opened and displayed on the screen. If the Visible property is set to False, the Excel file is opened and processed in the background, without showing the user interface. This can improve the performance and speed of the automation, as well as avoid any interference with the user's work. Therefore, to create a process that runs in the background and uses Excel activities, the Visible property of the Excel Application Scope activity must be configured to False. References: Excel Application Scope from UiPath documentation.

NEW QUESTION 21

A developer is using a Global Exception Handler as an error handling mechanism for a project. By default, how many times does a Global Exception Handler retry an activity that continually throws an error?

- A. 2
- B. 3
- C. 4
- D. 5

Answer: B

Explanation:

The Global Exception Handler is an error handling mechanism for a project. By default, it retries an activity that continually throws an error 3 times. The Global Exception Handler is a workflow that is executed when an exception occurs in the project. It allows the developer to define custom actions for handling different types of exceptions, such as logging, retrying, aborting, or continuing the execution¹. When the Global Exception Handler encounters an exception, it logs the name of the activity which faulted and starts retrying the activity three times. If it encounters the same exception each time and the number of retries reaches 3, the execution is aborted at the level of the activity which threw the exception². The number of retries can be modified by changing the value of the RetryCount variable in the Global Exception Handler workflow³. References: Global Exception Handler and Global Handler for Exceptions from UiPath documentation and Marketplace.

NEW QUESTION 26

DRAG DROP

A developer needs to take a screenshot of the state of the machine while the robot is running and then send the screenshot as an email. What is the correct sequence of steps that should be performed?

Instructions: Drag the Description found on the left and drop on the correct Step found on the right.

Description	Step Sequence
Use a Send Outlook Mail Message activity	Step 1
Use a Take Screenshot activity	Step 2
Configure the Attachments property in the mail message activity	Step 3
Use a Save Image activity	Step 4

- A. Mastered
- B. Not Mastered

Answer: A

Explanation:

The correct sequence of steps that should be performed is:

? Step 1 = Use a Take Screenshot activity to capture the state of the machine. The output is an Image variable, for example img_screenshot.

? Step 2 = Use a Save Image activity to save the image to a local file. Supply the FileName (e.g. screenshot.png) and the Image property should be the variable created in step 1.

? Step 3 = Use a Send Outlook Mail Message activity to compose and send the email. Configure the Attachments property to include the file path of the image saved in step 2 (e.g. "C:\Users\username\screenshot.png").

? Step 4 = Optionally, use a Delete File activity to delete the image file from the local drive after sending the email. Supply the Path property with the same file path as in step 3.

For more information on how to use these activities in UiPath Studio 2021 10, you can refer to these documents:

- ? Take Screenshot
- ? Save Image
- ? Send Outlook Mail Message
- ? Delete File

NEW QUESTION 28

The Extract PDF Page Range activity is used to extract a specific set of pages from a PDF file. Which of the following statements correctly describes this activity?

- A. OutputFileName argument is optional.
- B. Range argument accepts complex range values or "All".
- C. PageCount argument outputs the number of extracted pages.
- D. Password-protected PDF files cannot be processed with this activity.

Answer: B

Explanation:

The Extract PDF Page Range activity is used to extract a specific set of pages from a PDF file and save them as a new PDF file¹. The OutputFileName argument is required and specifies the path and name of the new PDF file¹. The Range argument accepts complex range values or "All" to indicate which pages to extract¹². For example, "1-3,5,7-9" will extract pages 1 to 3, 5, and 7 to 92. The PageCount argument outputs the number of pages in the original PDF file, not the extracted pages¹. Password-protected PDF files can be processed with this activity by using the Password argument to provide the password¹.

References: Extract PDF Page Range documentation, Extract PDF Page Range example.

NEW QUESTION 33

What will be the outcome when executing a Try Catch activity with a sequence placed within the Try section and no Catches section present?

- A. In case of an exception, a System Exception will be caught by default.
- B. Due to a validation error, the workflow will not execute.
- C. Process execution will terminate only if the sequence throws an exception.
- D. The sequence will result in a runtime error.

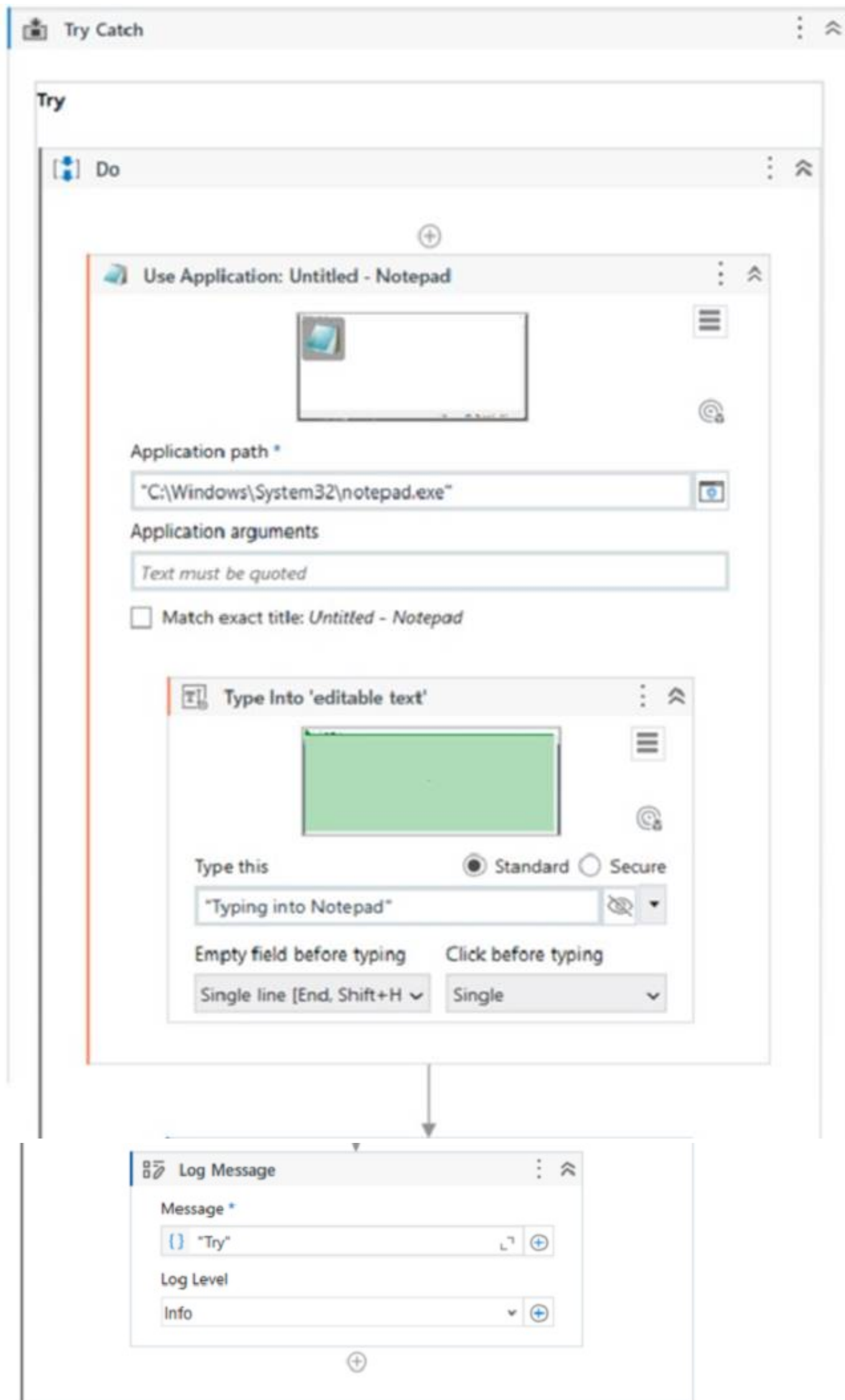
Answer: B

Explanation:

According to the UiPath documentation, the Try Catch activity requires at least one catch to be added¹. If there is no catch defined for the Try Catch activity, the workflow will not pass the validation and will not execute. The validation error message will say: "Try Catch: At least one catch must be added to the Try Catch activity." Therefore, the outcome of executing a Try Catch activity with a sequence placed within the Try section and no Catches section present will be a validation error. References: Activities - Try Catch

NEW QUESTION 37

Review the following graphics:



SelectorNotFoundException

exception

Log Message

Message *

{ } "SelectorNotFoundException" L⁷ +

Log Level

Error v +

ApplicationNotFoundException

exception

Log Message

Message *

{ } "ApplicationNotFoundException" L⁷ +

Log Level

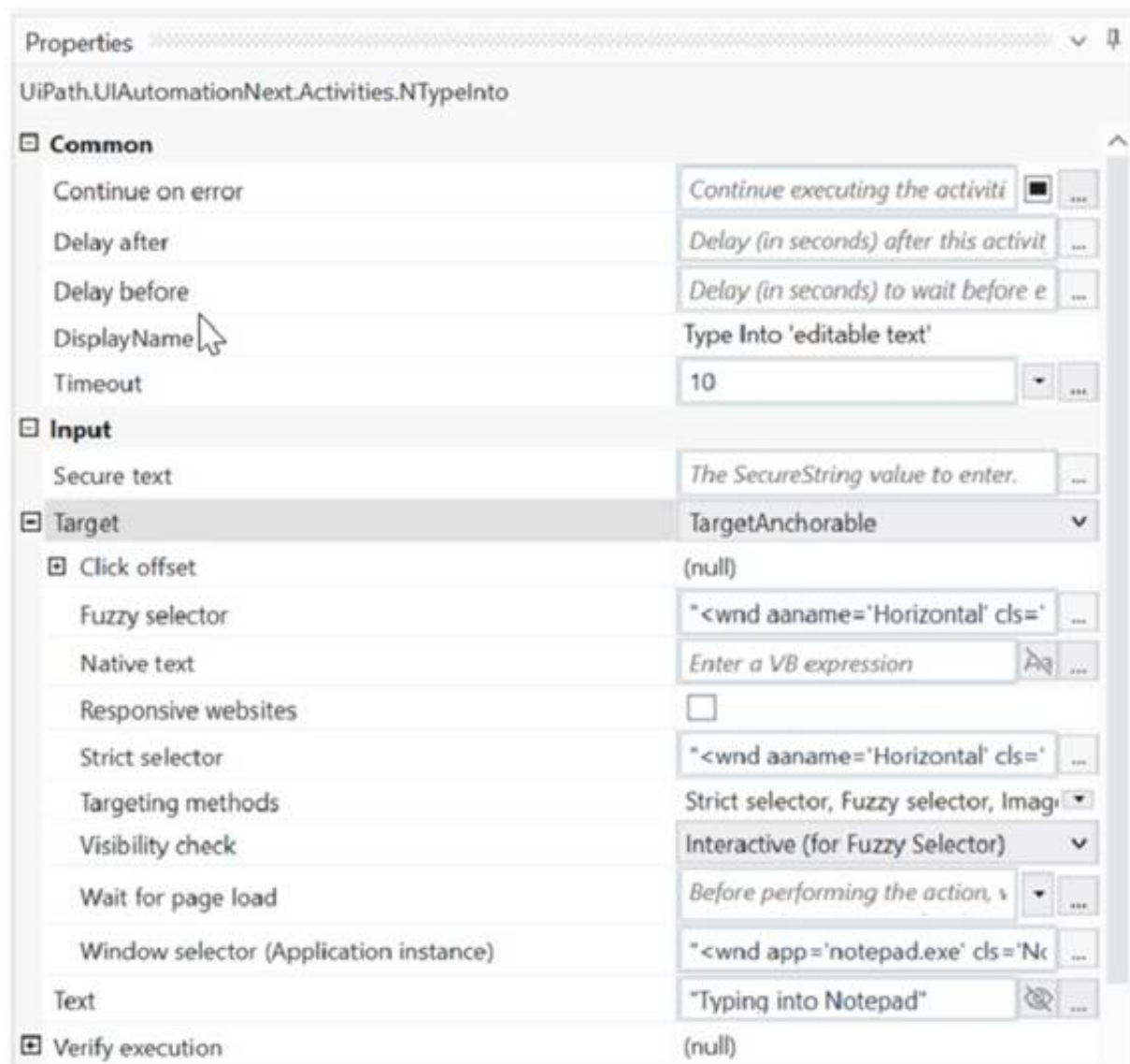
Error v +

Add new catch

Finally

Drop activity here

Continue on error	Continue executing the activ	<input checked="" type="checkbox"/> ...
DisplayName	Use Application: Untitled - Notepad	
Timeout	11	...
Input		
Unified Application Target	TargetApp	
Input/Output Element		
Input element	The Input UI Element defines the	...
Output element	Output a UI Element to use in ot	...
Misc		
Private	<input type="checkbox"/>	
Options		
Close	NAppCloseMode.Always	v ...
Input mode	Hardware Events v	
Open	NAppOpenMode.Never	v ...
Resize window	None v	
Window attach mode	Application instance v	
Options - Browser		
Incognito/private window	Opens the new browser sessi	<input checked="" type="checkbox"/> ...
User data folder mode	The user data folder mode y	v ...
User data folder path	The user data folder that the brc	...
WebDriver mode	Indicates how WebDriver is i	v ...



If the automation is executed and Notepad.exe is not running, which Log Message text value is contained in the Output panel?

- A. Exception
- B. ApplicationNotFoundException
- C. Try
- D. SelectorNotFoundException

Answer: D

Explanation:

Based on the image you sent, the automation process consists of four steps: opening Notepad.exe, typing some text, saving the file, and closing Notepad.exe. Each step has a Log Message activity that writes a text value to the Output panel. If Notepad.exe is not running, the first step will fail and throw an exception. The exception type is SelectorNotFoundException, because the Open Application activity cannot find the selector for Notepad.exe1. Therefore, the Log Message text value that is contained in the Output panel is "SelectorNotFoundException", which is option D. References: Open Application documentation.

NEW QUESTION 41

Suppose a developer is working with a 2023 yearly calendar. To expand the calendar into a monthly view, the developer must always click on the 15th day of the current month and add an event.

The selector for the Event Date Element activity in March is presented as follows:

```
<wnd app='applicationframehost.exe' title='Month View - Calendar' />
```

```
<uia cls='Day' name='15 March 2023' />
```

How should the selector be altered to guarantee that it clicks on the 15th of the ongoing month?

- A. <wnd app='applicationframehost.exe' title='Month View - Calendar' /><uia cls='Day' name='15 * 2023' />
- B. <wnd app='applicationframehost.exe' title='Month View - Calendar' /><uia cls='Day' name='15* 20 ?? ' />
- C. <wnd app='applicationframehost.exe' title='Month View - Calendar' /><uia cls='Day' name='*15*' />
- D. <wnd app='applicationframehost.exe' title='Month View - Calendar' /><uia cls='Day' name='15 ? 20 ?? ' />

Answer: B

Explanation:

This is the correct option because it uses wildcards to replace the dynamic parts of the selector. Wildcards are symbols that enable you to replace zero or multiple characters in a string. They are useful when dealing with attributes that change dynamically in the selector. There are two types of wildcards: asterisk (*) and question mark (?). The asterisk (*) replaces zero or more characters, while the question mark (?) replaces a single character. In this case, the name attribute of the target element changes according to the month, but the day and the year remain constant. Therefore, the selector can be altered by replacing the month name with an asterisk (*) and the last two digits of the year with two question marks (??). This way, the selector will match any element that has the name starting with 15, followed by any characters, followed by 20, followed by any two characters. For example, the selector will match 15 March 2023, 15 April 2023, 15 May 2023, etc. The other options are incorrect because they either do not use wildcards, or they use them incorrectly. Option A does not replace the last two digits of the year, which may change in the future. Option C replaces too many characters with the asterisk (*), which may cause ambiguity or false matches. Option D uses the question mark (?) incorrectly, as it should be used for single characters, not for spaces or multiple characters. References: Selectors With Wildcards

NEW QUESTION 43

What distinguishes the Settings sheet from the Assets sheet in the "Config.xlsx" file?

Settings sheet contains Credential Assets stored in Orchestrator. Assets sheet contains hard-coded values.

- A. Settings sheet contains hard-coded value
- B. Assets sheet contains all names of Orchestrator Assets including those of type Credential.

- C. Settings sheet contains only values used for the initialization of application
- D. Assets sheet contains only Credential Assets stored in Orchestrator.
- E. Settings sheet contains hard-coded value
- F. Assets sheet contains all names of Orchestrator Assets except those of type Credential.

Answer: C

Explanation:

The Config.xlsx file is a configuration file that stores the values of various parameters used in the automation process¹. It has three sheets: Settings, Constants, and Assets². The Settings sheet contains hard-coded values that may need to be changed occasionally, such as file paths, file names, timeout values, etc²³. The Constants sheet contains values that are universal variables for the process, such as selectors, URLs, etc²³. The Assets sheet contains the names of Orchestrator Assets that are used to store dynamic values that can be accessed across different processes, such as credentials, text, boolean, integer, etc²⁴. However, the Assets sheet does not contain the names of Credential Assets stored in Orchestrator, because they are retrieved using a different activity (Get Credentials) than other assets (Get Asset). Therefore, the Credential Assets are stored in the Settings sheet instead of the Assets sheet.

References: Config.xlsx documentation, Settings, Constants and Assets sheet in config file, Config Dictionary in ReFramework without Excel, Custom Configuration File Reader, [UiPath Framework - Assets VS Settings Sheet of Config.xlsx].

NEW QUESTION 48

A developer is working with an application that allows all types of input methods for the Type Into activity. Which property should be enabled for the fastest execution?

- A. Click before typing
- B. Empty field
- C. Simulate
- D. Window Messages

Answer: C

Explanation:

The Simulate option is a property of the Type Into activity that enables the fastest execution of the activity. This is because the Simulate option does not rely on the hardware drivers or the UI elements to perform the typing action. Instead, it uses the technology of the target application to directly inject the text as a stream of characters. This makes the Simulate option faster, more reliable, and more compatible than the other input methods. The Simulate option also allows the activity to run in the background, meaning that it does not require the application to be in focus or visible.

References:

? Type Into - UiPath Activities

? Input Methods - UiPath Studio

? UiPath Type Into Activity: Step-by-Step Guide with Examples - RPA Tutorial

NEW QUESTION 53

What is the main benefit of importing profiling sessions?

- A. Enables the analysis of potential flow issues.
- B. Provides context menu options for profiling actions.
- C. Disables focus on imported profiling sessions.
- D. Disables the analysis of potential flow issues.

Answer: A

Explanation:

The main benefit of importing profiling sessions is that it enables the analysis of potential flow issues in the automation workflows. By importing profiling sessions, the developer can examine previous runs and compare them with the current run. This can help the developer to identify which workflows or activities take longer to execute, which ones consume more resources, and which ones cause errors or exceptions. The developer can also use the Profiler app to visualize the profiling data and drill down into the details of each operation.

This way, the developer can optimize the performance and reliability of the automation workflows and improve the user experience.

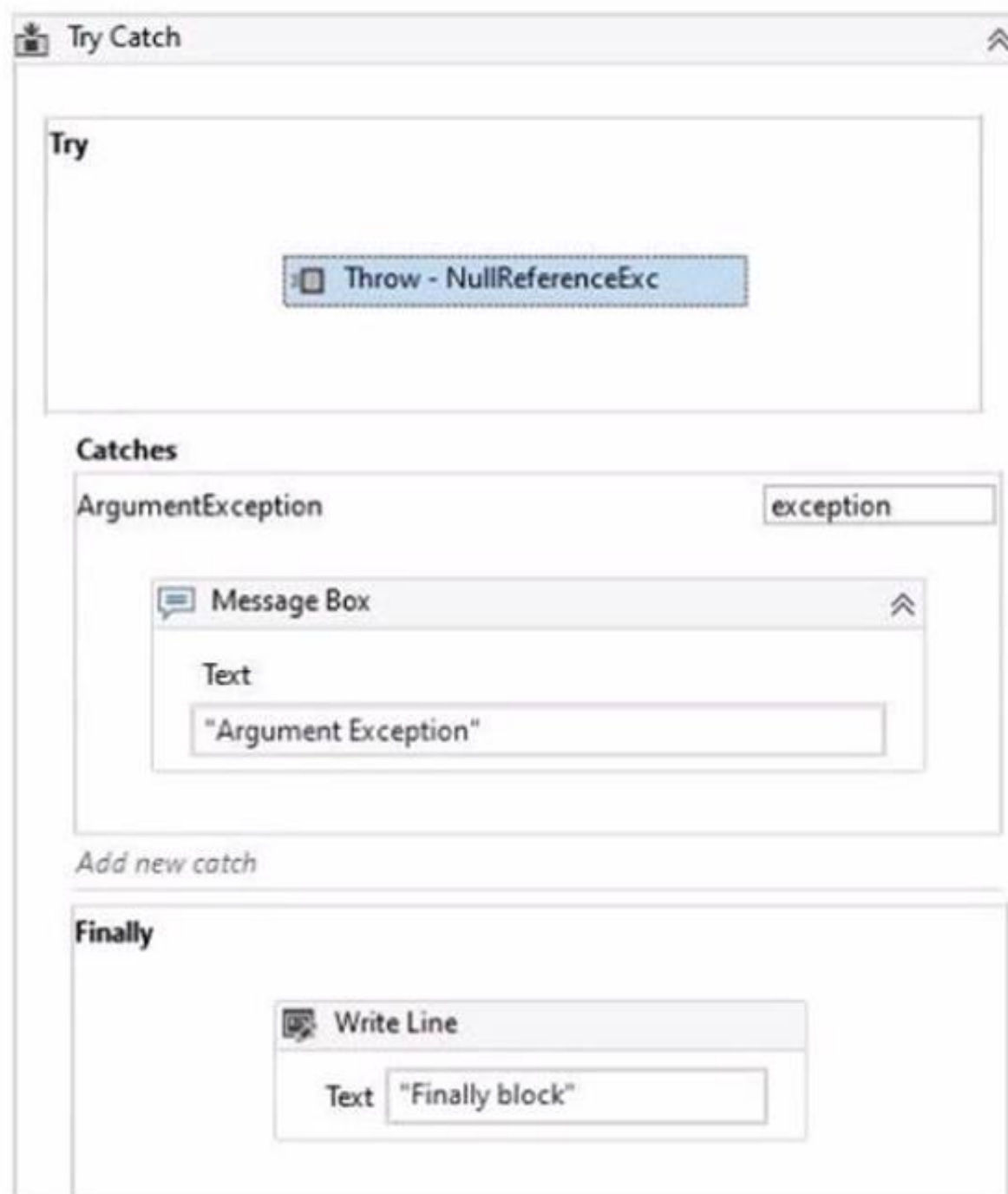
References:

? Studio - Profile Execution - UiPath Documentation Portal

? Process Mining - Application Profiling - UiPath Documentation Portal

NEW QUESTION 55

In the Catches section of the Try Catch activity a developer selected ArgumentException in the exception handler.



What happens when the activity encounters a NullReferenceException?

- A. The Finally block is not executed and a runtime error occurs.
- B. The Finally block executes and no exception is thrown.
- C. The Catches section catches the exception and the Finally block is executed.
- D. The Catches section catches the exception and the Finally block is skipped.

Answer: A

Explanation:

When the activity encounters a NullReferenceException, the Finally block is not executed and a runtime error occurs. This is because the Catches section of the Try Catch activity only handles the ArgumentException type, which is a specific type of exception that occurs when one of the arguments provided to a method is not valid¹. A NullReferenceException is a different type of exception that occurs when there is an attempt to dereference a null object reference². Since the Catches section does not have a handler for the NullReferenceException type, the exception is not caught and the execution is stopped with a runtime error. The Finally block, which contains the activities that are always executed regardless of the outcome of the Try Catch activity, is also skipped³. References: ArgumentException Class, NullReferenceException Class, and Try Catch from UiPath documentation.

NEW QUESTION 56

Which of the following demonstrates the correct syntax for using the Vb.Net "If" Operator?

- A. If(condition1, valueIfTrue, valueIfFalse)
- B. If(condition1, valueIfTrue) ElseIf(valueIfFalse)
- C. If condition1 Then valueIfTrue ElseIf valueIfFalse
- D. valueIfTrue If condition1 Else valueIfFalse

Answer: A

NEW QUESTION 57

A developer intends to enter text into an input field using a combination of a string and a hotkey. The input action should take place within a hidden or minimized window.

Which input method(s) can be used individually for the Type Into activity?

- A. Simulate only.
- B. Simulate and Window Messages.
- C. Same as App/Browser and Simulate.
- D. Window Messages only.

Answer: B

Explanation:

The Type Into activity is used to enter text in a specified UI element, such as a text box. It has three input methods that can be selected from the properties panel: Default, Simulate, and Window Messages¹. Each input method has different advantages and limitations, depending on the target application and the automation scenario².

? The Default input method uses the hardware driver to simulate the keystrokes, as if a human user is typing on the keyboard. It is the most reliable and compatible input method, but it requires the target application to be in focus and visible on the screen. It also supports sending special keys, such as Tab or Enter, using brackets [k(enter)] or [k(tab)].

? The Simulate input method uses the technology of the target application to directly

inject the text into the UI element. It does not rely on the hardware driver, so it can work in the background, even if the target application is hidden or minimized. It also supports sending special keys using brackets [k(enter)] or [k(tab)]. However, it may not be compatible with some applications or UI elements that do not support this method.

? The Window Messages input method uses the Windows API to send messages

directly to the target application. It can also work in the background, even if the target application is hidden or minimized. It does not support sending special keys using brackets [k(enter)] or [k(tab)], but it can send them using modifiers such as

{ENTER} or {TAB}. However, it may not be compatible with some applications or UI elements that do not accept window messages.

Therefore, if a developer intends to enter text into an input field using a combination of a string and a hotkey, and the input action should take place within a hidden or minimized window, they can use either the Simulate or the Window Messages input method individually for the Type Into activity. They cannot use the Default input method, because it requires the target application to be in focus and visible on the screen. They also cannot use the Same as App/Browser input method, because it is not an option for the Type Into activity.

References:

? Type Into - UiPath Documentation Portal.

? What are different Input methods in UiPath - UiPath Community Forum.

NEW QUESTION 62

Which of the following statements is true about Global Constants?

- A. Global Constants can be created only from the Data Manager panel.
- B. Global Constants values can be modified during the automation execution.
- C. Global Constants have a Direction property (In/Out).
- D. Global Constants can be created from the Data Manager panel and from the Variables panel.

Answer: D

Explanation:

Global Constants are a type of variables that can store data in a central location that can be accessed by all workflows and activities in a project. Unlike Global Variables, Global Constants have a fixed value that cannot be modified during the automation execution. Global Constants can be created from two places in UiPath Studio: the Data Manager panel and the Variables panel. The Data Manager panel is a new feature in UiPath 2022.10 that allows the developer to manage all the data elements of a project, such as variables, arguments, data types, and data sources. The Variables panel is a classic feature that allows the developer to create and edit variables for a specific workflow. To create a Global Constant from the Data Manager panel, the developer needs to select the Constants tab, click on the New Constant button, and fill in the required fields, such as name, type, value, and description. To create a Global Constant from the Variables panel, the developer needs to select the Global scope, click on the Create Variable button, and fill in the required fields, such as name, type, value, and description. In both cases, the developer needs to make sure that the Is Constant option is checked, which indicates that the variable is a constant and cannot be changed.

References:

? Global Variables and Constants - UiPath Community Forum

? Data Manager - UiPath Studio

? Variables Panel - UiPath Studio

NEW QUESTION 67

Which activity can be used to transition a Background Process to Foreground?

- A. Use Foreground
- B. Activate
- C. Maximize Window
- D. Set Focus

Answer: A

Explanation:

The Use Foreground activity can be used to transition a Background Process to Foreground. It allows you to perform UI automation tasks that require user interaction or visibility¹. The other activities are not suitable for this purpose.

References:

? Background Process Automation documentation, Transitioning a Background Process to Foreground section

NEW QUESTION 70

DRAG DROP

A developer loaded an existing workflow that uses UI Automation in Google Chrome. The Google Chrome extension has not been installed on the developer's machine How should the developer load the Google Chrome extension from UiPath Studio?

Instructions: Drag the Description found on the left and drop on the correct Step found on the right.

Description	Step Sequence
Click, "Tools" to see "UiPath Extensions"	Step 1
Navigate to "Home"	Step 2
Click, "Enable extension" in the Google Chrome confirmation pop-up	Step 3
Select "Chrome" and then click, "Install"	Step 4

- A. Mastered
B. Not Mastered

Answer: A

Explanation:

The developer can load the Google Chrome extension from UiPath Studio by following these steps:

? Step 1 = Navigate to Home in UiPath Studio. This is the section where you can create, open, or manage your projects.

? Step 2 = Click Tools to see UiPath Extensions. This is the section where you can install or update various extensions for different applications or browsers.

? Step 3 = Select Chrome and then click Install. This will launch the Chrome browser and redirect you to the Chrome Web Store page for the UiPath extension.

? Step 4 = Click Enable extension in the Google Chrome confirmation pop-up. This will add the UiPath extension to your browser and allow you to use UI automation activities in Chrome.

NEW QUESTION 71

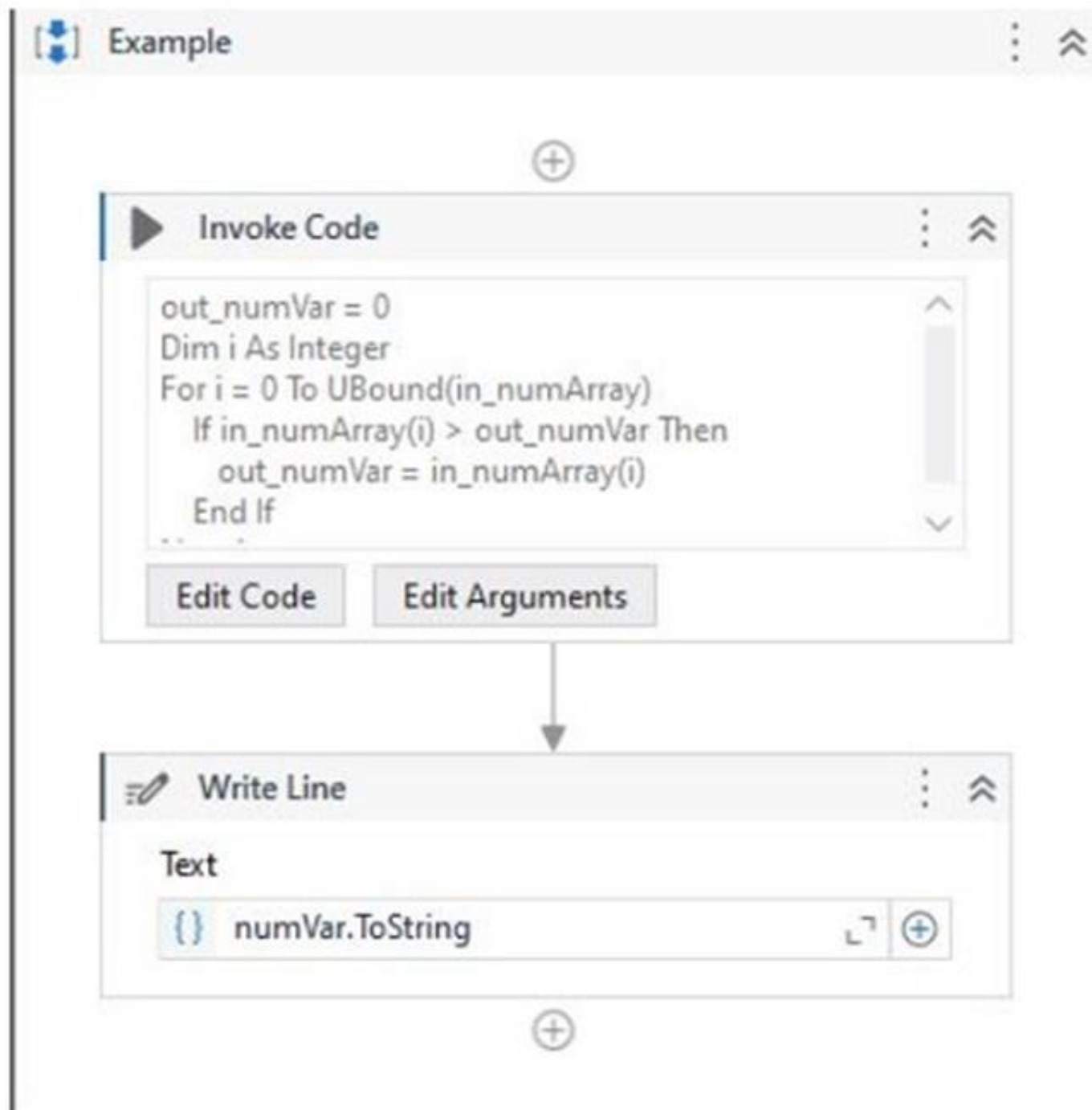
Given the following list of arguments:

Invoked code arguments			
Name	Direction	Type	Value
in_numArray	In	Int32[]	{2,5,1,7,9,4,8}
out_numVar	Out	Int32	numVar
Create Argument			
OK Cancel			

And the following code:

```
VB.Net Code
1  out_numVar = 0
2  Dim i As Integer
3  For i = 0 To in_numArray.Length-1
4      If in_numArray(i) > out_numVar Then
5          out_numVar = in_numArray(i)
6      End If
7  Next i
```

What is the value that will be displayed in the Output Panel at the end of the sequence below:



- A. 1
- B. 2
- C. 7
- D. 9

Answer: D

Explanation:

The code in the Invoke Code activity is looping through an array of integers and checking if the current value is greater than the previous value. If it is, the current value is stored in the output variable. Since the last value in the array is 9, this will be the final value of the output variable. (UiPath Studio - Invoke Code - UiPath Academy)

References:

? Studio - Invoke Code - UiPath Documentation Portal

? UiPath Studio - Invoke Code - UiPath Academy

NEW QUESTION 73

DRAG DROP

How should the computation of the signature be done for client apps that receive Orchestrator requests and need to check their authenticity?

Instructions: Drag the Description found on the left and drop on the correct Step Sequence found on the right.

Description	Step Sequence
Retrieve the X-UiPath-Signature HTTP header.	
To obtain the raw signature bytes, decode the value of the header from Base64.	
Compare the computed signature to the value from X-UiPath-Signature HTTP header.	
Compute the hash using SHA256 and the signing key (UTF-8 encoded).	

- A. Mastered
- B. Not Mastered

Answer: A

Explanation:

The correct sequence for the computation of the signature for client apps that receive Orchestrator requests and need to check their authenticity is:

? Retrieve the X-UiPath-Signature HTTP header. This header contains the signature of the request body, encoded in Base64. (UiPath Orchestrator documentation1)

? To obtain the raw signature bytes, decode the value of the header from Base64.

You can use any tool or library that supports Base64 decoding. (UiPath Orchestrator documentation1)

? Compute the hash using SHA256 and the signing key (UTF-8 encoded). The

signing key is a secret value that is shared between Orchestrator and the client app. You can use any tool or library that supports SHA256 hashing. (UiPath Orchestrator documentation1)

? Compare the computed signature to the value from X-UiPath-Signature HTTP

header. If they match, then the request is authentic and has not been tampered with. If they do not match, then the request is invalid and should be rejected. (UiPath Orchestrator documentation1)

References:

? 1: Webhooks - UiPath Orchestrator.

NEW QUESTION 77

Which two parts are included in an Anchor Base activity?

- A. Anchor and Action
- B. Anchor and Condition
- C. Anchor and Trigger Scope
- D. Anchor and Sequence

Answer: A

Explanation:

The two parts that are included in an Anchor Base activity are Anchor and Action. The Anchor Base activity is a container that searches for a UI element by using other UI elements as anchors. This should be used when a reliable selector is not available. The Anchor Base activity has two sections: Anchor and Action. The Anchor section contains an activity that identifies the anchor element, such as Find Element or Find Image. The Action section contains an activity that performs an action on the target element, such as Click or Type Into. The Anchor Base activity also has a property called AnchorPosition, which specifies the relative position of the target element to the anchor element, such as left, right, top, or bottom2. For example, if the Anchor Base activity is used to click on a button that is always to the right of a label, the Anchor section can use the Find Element activity to find the label, the Action section can use the Click activity to click on the button, and the AnchorPosition property can be set to Right3.

References: Anchor Base and How to properly use AnchorBase activity? from UiPath documentation and forum.

NEW QUESTION 80

Which expression correctly converts the string variable "DateString" with the value "03/03/2023 16:23:11" into a Date Time variable?

- A. DateTime.ParseExact(DateString, "dd/MM/yyyy hh:mm:ss", CultureInfo.InvariantCulture)
- B. Date Time.ParseExact(DateString, "MM/dd/yyyy hh:mm:ss", CultureInfo.InvariantCulture)
- C. DateTime.ParseExact(DateString, "mm/dd/yyyy HH:mm:ss", CultureInfo.InvariantCulture)
- D. DateTime.ParseExact(DateString, "dd/MM/yyyy HH:mm:ss", CultureInfo.InvariantCulture)

Answer: D

Explanation:

The DateTime.ParseExact method converts a string into a DateTime object using a specified format and culture1. The format parameter defines the order and symbols of the date and time components in the string2. The culture parameter determines the conventions for date separators, time indicators, and other symbols3.

In this case, the string variable DateString has the value "03/03/2023 16:23:11", which means the 3rd of March, 2023, at 4:23:11 PM. To convert this string into a DateTime variable, we need to use the format "dd/MM/yyyy HH:mm:ss", which matches the order and symbols of the string components. The "dd" represents the day as two digits, the "MM" represents the month as two digits, the "yyyy" represents the year as four digits, the "HH" represents the hour as two digits in 24-hour format, the "mm" represents the minute as two digits, and the "ss" represents the second as two digits2. The slashes ("/") and colons (":") are used as date and time separators respectively. The CultureInfo.InvariantCulture parameter specifies that the string uses invariant culture, which means it is not associated with any specific language or region3.

Therefore, option D is the correct expression to convert the string variable DateString into a DateTime variable. Option A has a wrong hour format ("hh" instead of "HH"), which would cause an exception if the hour is greater than 12. Option B has a wrong order of day and month ("MM/dd" instead of "dd/MM"), which would result in an incorrect date. Option C has a wrong minute format ("mm" instead of "MM"), which would cause an exception if the month is greater than 12.

NEW QUESTION 82

What is the default polling interval set for an event trigger?

- A. 1 minute
- B. 5 minutes
- C. 10 minutes
- D. 15 minutes

Answer: B

Explanation:

The default polling interval for an event trigger is 5 minutes, which means that the trigger checks for new object events every 5 minutes. This value can be customized using the Adjustable Polling Interval feature, which allows users to choose the interval on which event triggers check for new object events. The polling interval can be changed from a specific connector's page or from the Connections tab. (UiPath Automation Developer study guide)

References:

? How to modify the polling interval for Integration Service Triggers?

? Integration Service - Triggers

? UiPath Integration Service - Vote on Tutorials

NEW QUESTION 83

A developer initialized a String array, listOfMonthsByQuarter = {"1", "2", "3"} Which data type and value are retrieved when listOfMonthsByQuarter(2) is used at runtime?

- A. Data Type Int32 Value: 2
- B. Data Type- Int32 Value: 3
- C. Data Type: String Valu
- D. 2
- E. Data Typ
- F. String: Value 3

Answer: D

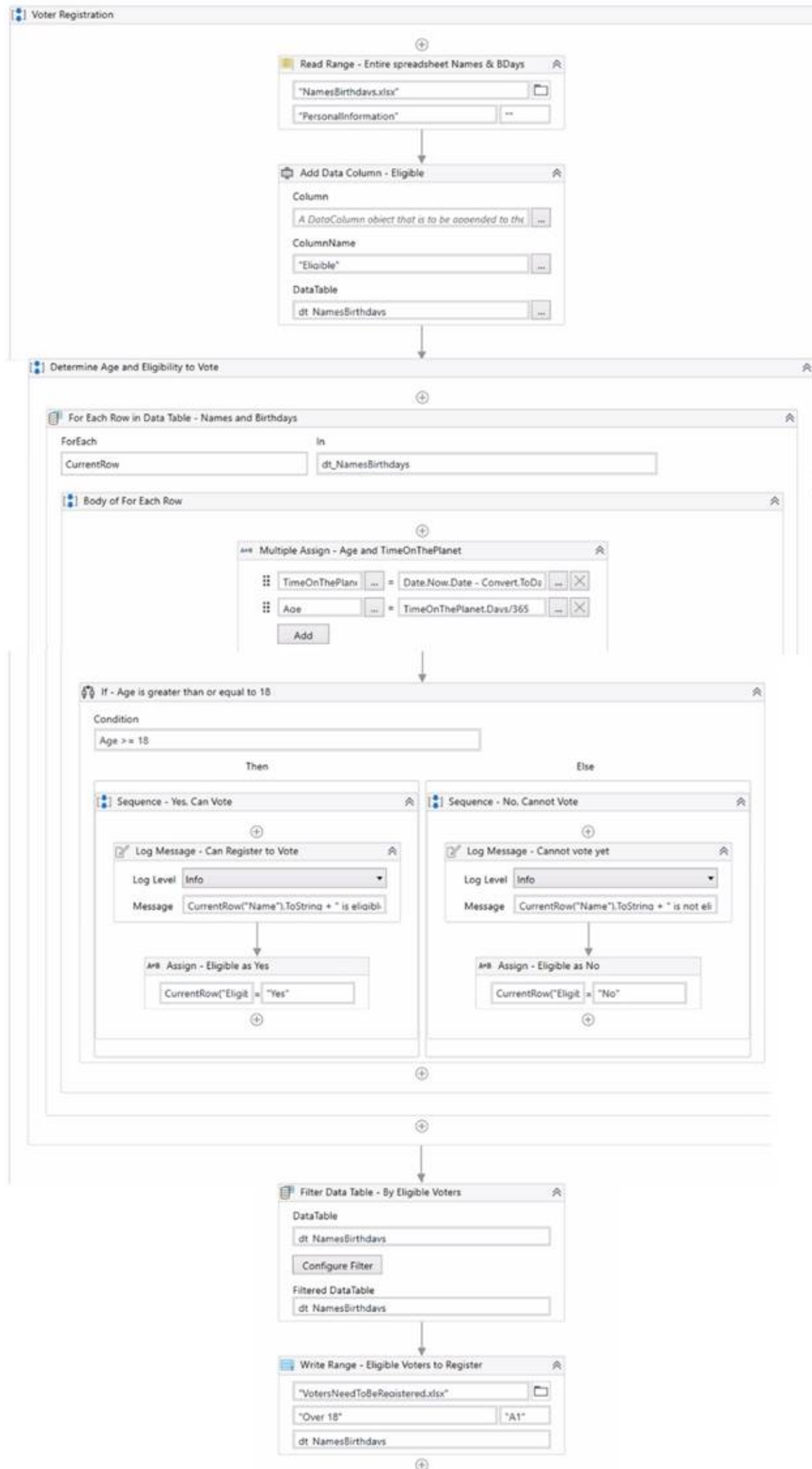
Explanation:

The listOfMonthsByQuarter variable is a String array, which means it can store multiple values of type String. Each value in the array has an index, which is a number that indicates its position in the array. The index starts from 0, so the first value has index 0, the second value has index 1, and so on. To access a specific value in the array, we can use the syntax arrayName(index). For example, listOfMonthsByQuarter(0) will return the first value in the array, which is "1". Similarly, listOfMonthsByQuarter(2) will return the third value in the array, which is "3". Therefore, the data type of listOfMonthsByQuarter(2) is String, and the value is "3". References: Arrays and Variables from UiPath documentation.

NEW QUESTION 87

HOTSPOT

A developer created three variables used in the workflow shown below:



Instructions: Based on best practices, select the correct Scope for each Variable type from the drop-down lists shown in the following exhibit.

Name	Variable type	Scope	Default
Age	Double	<div>▼</div> <div>Sequence – Yes, Can Vote</div> <div>Sequence – No, Cannot Vote</div> <div>Body of For Each Row</div> <div>Determine Age and Eligibility to Vote</div> <div>Voter Registration</div>	Enter a VB expression
TimeOnThePlanet	TimeSpan	<div>▼</div> <div>Sequence – Yes, Can Vote</div> <div>Sequence – No, Cannot Vote</div> <div>Body of For Each Row</div> <div>Determine Age and Eligibility to Vote</div> <div>Voter Registration</div>	Enter a VB expression
dt_NamesBirthdays	DataTable	<div>▼</div> <div>Sequence – Yes, Can Vote</div> <div>Sequence – No, Cannot Vote</div> <div>Body of For Each Row</div> <div>Determine Age and Eligibility to Vote</div> <div>Voter Registration</div>	New System.Data.DataTable

- A. Mastered
- B. Not Mastered

Answer: A

Explanation:

Name = Age Variable type = Double Scope = Body of For Each Row

Name = TimeonThePlanet Variable type = Time Span Scope = Sequence - Yes, Can Vote Name = dt_NamesBirthdays Variable type = DataTable Scope = Voter Registration

The reason for choosing these scopes is to keep the variables in the innermost scope where they are used and to avoid unnecessary clutter and duplication in the Variables panel. You can learn more about variable scope in UiPath from the following sources:

- ? Variable scope - Studio - UiPath Community Forum
- ? How Variable Scope Works in UiPath - Video Tutorials - UiPath Community Forum
- ? How to pass variables as UiPath arguments example - TheServerSide
- ? Best Practices: Select Variables scope - UiPath Community Forum

NEW QUESTION 88

Which logging level includes the following information by default?

- * 1. Execution Started log entry - generated every time a process is started.
- * 2. Execution Ended log entry - generated every time a process is finalized.
- * 3. Transaction Started log entry - generated every time a transaction item is obtained by the robot from Orchestrator.
- * 4. Transaction Ended log entry - generated every time the robot sets the transaction status to either Success or Failed.
- * 5. Activity Information log entry - generated every time an activity is started, faulted or finished inside a workflow.
- * 6. Arguments and Variables Information log entry - show values of the variables and arguments that are used.

- A. Critical
- B. Trace
- C. Verbose
- D. Information

Answer: C

Explanation:

The Verbose logging level includes all the information that is logged by the other levels, plus the values of the variables and arguments that are used in the process1. By default, the Verbose level includes the following log entries2:

- ? Execution Started
- ? Execution Ended
- ? Transaction Started
- ? Transaction Ended
- ? Activity Information
- ? Arguments and Variables Information <https://docs.uipath.com/robot/standalone/2023.4/user-guide/logging-and-log-levels>

NEW QUESTION 91

A developer implemented a process using the Robotic Enterprise Framework and an Orchestrator queue. The MaxRetryNumber from the "Config.xlsx" file is set to "1" and the Max # of retries from the Queue settings from Orchestrator is set to "2". At runtime, the first transaction item throws a Business Exception. How many times will the transaction be retried?

- A. The transaction will be retried only one time.
- B. The transaction will not be retried.
- C. The transaction will be retried 2 times.
- D. The transaction will be retried multiple times, until it will be processed successfully.

Answer: B

Explanation:

The Robotic Enterprise Framework (REF) is a template that provides a structured and consistent way to develop automation processes. The REF uses an Orchestrator queue to store and process the transaction items, which are the units of work for the process. The REF also handles different types of exceptions that may occur during the execution of the process, such as system exceptions and business exceptions. A system exception is an error that prevents the normal execution of the process, such as a network failure or an application crash. A business exception is an error that is related to the business logic or rules of the process, such as an invalid input or an incorrect output. The REF has different mechanisms to deal with these exceptions, such as retrying, logging, and updating the status of the transaction items.

The MaxRetryNumber from the “Config.xlsx” file is a parameter that specifies how many times the REF will retry a transaction item when a system exception occurs. The Max # of retries from the Queue settings from Orchestrator is a parameter that specifies how many times Orchestrator will retry a transaction item when it changes to Failed status due to any exception. These two parameters are independent of each other and have different effects on the retry mechanism. In this case, the first transaction item throws a business exception, which means that there is something wrong with the data or the logic of the process. The REF will not retry a transaction item when a business exception occurs, because it assumes that retrying will not solve the problem. Instead, the REF will log the exception, update the status of the transaction item to Failed, and move on to the next transaction item. Orchestrator will also not retry a transaction item when it changes to Failed status due to a business exception, because it respects the decision of the REF. Therefore, the transaction will not be retried at all.

References:

? 1: Robotic Enterprise Framework Template - UiPath Studio.

NEW QUESTION 94

A developer wants to run two processes on the same machine, the first process contains only HTTP Request activities and the second one performs UI Automation. What option needs to be enabled on the first process in order to ensure that the processes can run concurrently on the same machine?

- A. Starts in Background
- B. Attended Automation
- C. Disable Pause
- D. Supports Persistence

Answer: A

Explanation:

The Starts in Background option is a property of the process that indicates whether the process can run in parallel with other processes on the same machine. If this option is enabled, the process can run as a background process, meaning that it does not require user interaction or UI automation. This allows the process to run concurrently with another process that performs UI automation, such as the second process in the question. The Starts in Background option can be configured in the project settings of the process in UiPath Studio, or in the process settings in Orchestrator.

References:

? Background Process - UiPath Studio

? Background Process Automation - UiPath Robot

? Managing Processes - UiPath Orchestrator

NEW QUESTION 96

When a developer runs a process using the REFramework, with the process utilizing Orchestrator queues and a queue already created with the Name provided and the Auto Retry function disabled, which states will be executed without errors?

- A. Initialization -> Process Transaction -> End Process
- B. Initialization -> Get Transaction Data -> Process Transaction -> End Process
- C. Initialization -> Get Transaction Data -> End Process
- D. Initialization -> End Process

Answer: B

Explanation:

The REFramework is a template that provides a structured and consistent way to develop automation processes using state machines. The REFramework has four main states: Initialization, Get Transaction Data, Process Transaction, and End Process. Each state performs a specific function and transitions to another state based on the outcome. When a developer runs a process using the REFramework, with the process utilizing Orchestrator queues and a queue already created with the Name provided and the Auto Retry function disabled, the following states will be executed without errors:

? Initialization: This state is used to initialize the application, read the configuration

data, and log in to Orchestrator. If the initialization is successful, the state transitions to Get Transaction Data; otherwise, it transitions to End Process. (UiPath ReFramework documentation1)

? Get Transaction Data: This state is used to retrieve a transaction item from the

Orchestrator queue and assign it to a variable. If there is a transaction item available, the state transitions to Process Transaction; otherwise, it transitions to End Process. (UiPath ReFramework documentation1)

? Process Transaction: This state is used to execute the business logic for the

current transaction item and handle any exceptions that may occur. If the transaction is successful, the state updates the status of the transaction item to Successful and transitions to Get Transaction Data; if the transaction fails due to a business exception, the state updates the status of the transaction item to Failed and transitions to Get Transaction Data; if the transaction fails due to a system exception, the state updates the status of the transaction item to Failed and retries the transaction based on the MaxRetryNumber parameter from the Config file. If the retry limit is reached, the state transitions to End Process; otherwise, it transitions to Get Transaction Data. (UiPath ReFramework documentation1)

? End Process: This state is used to close all applications, log out of Orchestrator, and terminate the process. This state does not have any transition. (UiPath ReFramework documentation1)

References:

? 1: Robotic Enterprise Framework Template - UiPath Studio.

NEW QUESTION 98

A developer created a process that performs the following tasks
1 Prompts the user for an input company name
2. Opens a browser and searches for the company name
3. Scrapes the search results
4. Writes the results to a Microsoft Excel file
What is the total number of steps that require human interaction?

- A. One
- B. Two
- C. Three
- D. Four

Answer: A

Explanation:

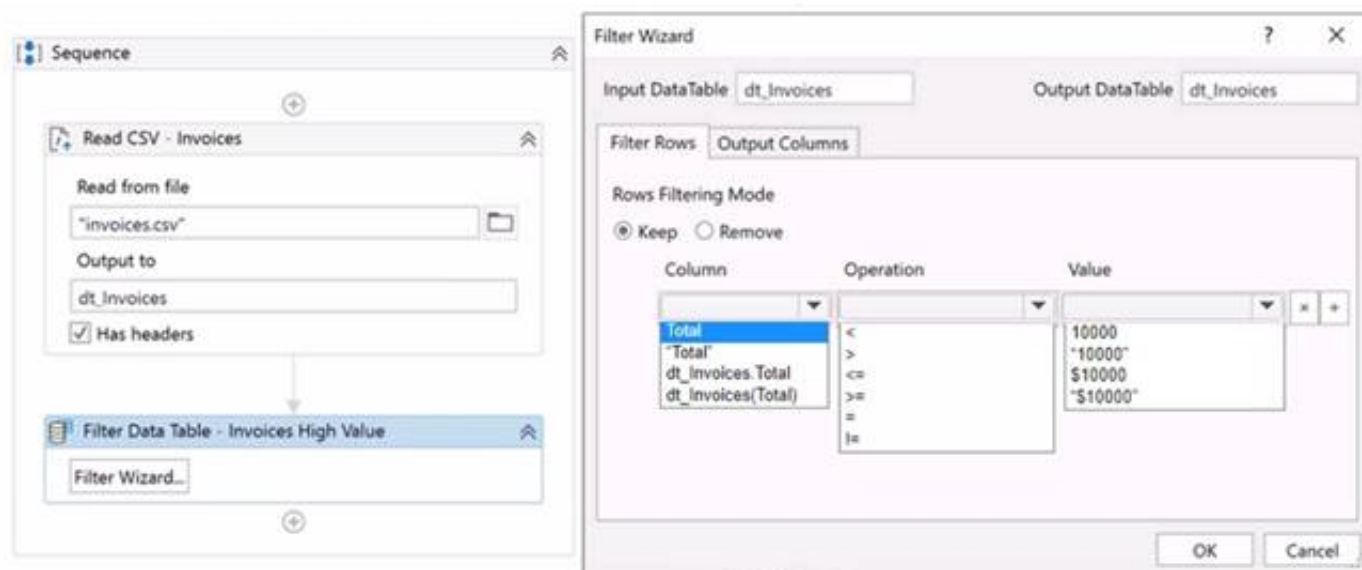
The only step that requires human interaction is the first one, where the user is prompted for an input company name. The rest of the steps are performed by the automation process without any human intervention.

NEW QUESTION 99

HOTSPOT

A developer is building a process which reads invoice data from the "mvoices.csv" file that includes a Total column of type Double.

Instructions: Using the drop-down lists shown in the following exhibit, configure the Filter Data Table Wizard to keep all invoices with a Total value that is over 10 000 USD.



- A. Mastered
- B. Not Mastered

Answer: A

Explanation:

To configure the Filter Data Table Wizard to keep all invoices with a Total value that is over 10 000 USD, you should choose the following options from the drop-down lists:

Column: Total Operation: > Value: 10000

The reason for choosing these options is to filter the data table based on the condition that the Total column value is greater than 10000. This will keep only the rows that satisfy this

condition and remove the rest. You can learn more about the Filter Data Table activity and how to use it from the following sources:

- ? Four Ways to Filter Data Tables in UiPath Studio | UiPath
- ? How to Filter Data Table - Help - UiPath Community Forum
- ? Filter Data table with specific column - UiPath Community Forum

NEW QUESTION 101

What is a pre-requisite for running functional test cases in REFramework?

- A. Invoke Process XAML file
- B. Invoke InitAllSettings XAML file
- C. Invoke SetTransactionStatus XAML file
- D. Invoke Main XAML file

Answer: B

Explanation:

A pre-requisite for running functional test cases in REFramework is to invoke the InitAllSettings XAML file, which initializes the application, reads the configuration file, and sets the log level. This file is invoked in the Init state of the Main XAML file, which is the entry point of the REFramework. By invoking the InitAllSettings file, you can ensure that the test cases have access to the necessary settings and parameters for the automation project. (UiPath Studio - Testing Frameworks - UiPath Academy)

References:

- ? Studio - Testing Frameworks - UiPath Documentation Portal
- ? UiPath Studio - Testing Frameworks - UiPath Academy
- ? REFramework documentation.pdf - Google Drive

NEW QUESTION 105

What method can be used to change the index of an existing column in a datatable?

- A. SetIndex
- B. MoveAt
- C. SetColumnIndex
- D. SetOrdinal

Answer: D

Explanation:

The SetOrdinal method of the DataColumn class can be used to change the index or position of an existing column in a datatable. The method takes an integer argument that specifies the new ordinal or position of the column. For example, to move the first column to the last position, one can use: `yourDataTable.Columns(0).SetOrdinal(yourDataTable.Columns.Count - 1)`. (UiPath Automation Developer study guide)

References:

- ? DataColumn.SetOrdinal Method
- ? How to move Column from Index 0 to Index 10 in datatable

NEW QUESTION 108

A developer is automating an invoice process for the finance department using a Dispatcher and Performer model with access to Orchestrator. New invoices are

stored in a shared folder each morning Each invoice needs to be processed separately in the finance system as a single unit of work After each invoice is processed in the finance system, a unique output ID must be emailed to the finance team's email address.
How should the developer store the relevant data in Orchestrator?

- A. Upload individual invoice data and the finance team's email address as Specific Data in Queue Items
- B. Upload the finance team's email address as Specific Data in Queue Items Create an asset for each individual invoice data field
- C. Create an asset for each piece of invoice data as well as for the finance team's email address
- D. Upload individual invoice data as Specific Data in Queue Items Create an asset for the finance team's email address

Answer: D

Explanation:

The developer should store the relevant data in Orchestrator as follows:

? Upload individual invoice data as Specific Data in Queue Items. The Specific Data is a collection of key-value pairs that can store additional information for each queue item, such as the invoice number, date, amount, etc. The Specific Data can be added to the queue items using the Add Queue Item activity in the Dispatcher

workflow. The Specific Data can be retrieved from the queue items using the Get Transaction Item activity in the Performer workflow. The Specific Data can be used to process each invoice separately in the finance system as a single unit of work³.

? Create an asset for the finance team's email address. An asset is a global variable

that can store a specific value, such as a text, a number, a boolean, or a credential. An asset can be created and managed in Orchestrator, and accessed by the robots using the Get Asset activity. An asset can be used to store a value that is common for all the queue items, such as the finance team's email address. The asset can be used to email the unique output ID to the finance team after each invoice is processed in the finance system⁴.

References: About Queues and Transactions and About Assets from UiPath documentation.

NEW QUESTION 109

A developer is reviewing an existing workflow in UiPath Studio Based on best practices, what should be used to view the available versions for activities used in the workflow?

- A. Workflow Analyzer
- B. Project Dependencies
- C. Project Settings
- D. UI Explorer

Answer: B

Explanation:

To view the available versions for activities used in the workflow, the Project Dependencies option should be used. The Project Dependencies option is located in the Project panel in UiPath Studio. It shows the list of all the packages and activities that are used in the current project, along with their current versions and available updates. The Project Dependencies option also allows the developer to install, update, or remove packages and activities, as well as view their details and documentation². By using the Project Dependencies option, the developer can ensure that the project is using the latest and compatible versions of the activities, and avoid any errors or conflicts that might arise from outdated or missing packages³.

References: Managing Dependencies and Project Dependencies Mass Update from UiPath documentation and forum.

NEW QUESTION 112

What role do Triggers play in the UiPath Integration Service?

- A. Manage connections between UiPath Studio and third-party applications.
- B. Provide a mechanism for starting processes on a scheduled basis from Orchestrator.
- C. Assist in the creation of automation projects by providing event-based activities.
- D. Provide a mechanism for subscribing to specific events from third-party applications, automatically starting processes in Orchestrator.

Answer: D

Explanation:

Triggers are a feature of UiPath Integration Service that allow you to react to key events in third-party systems, such as data updates, insertions, deletions, or custom events. By configuring triggers, you can start your UiPath processes automatically from Orchestrator when these events occur, enabling near real-time automation workflows across different applications. (UiPath Integration Service documentation¹)

References:

? 1: Integration Service - Triggers - UiPath Documentation Portal

NEW QUESTION 113

To retrieve all Outlook emails with the word "UiPath" in the subject, which filtering property and filter schema should a developer use?

- A. Property: FilterByMessageIdsSchema: "@SQL=""urn:schemas:httpmail:subject"" like 'UiPath%'"
- B. Property: FilterSchema: "@SQL=""urn:schemas:httpmail:subject"" like '%UiPath%'"
- C. Property: FilterSchema: "@SQL=""urn:schemas:httpmail:subject"" like 'UiPath%'"
- D. Property: FilterByMessageIdsSchema: "@SQL=""urn:schemas:httpmail:subject"" like '%UiPath%'"

Answer: B

Explanation:

To retrieve all Outlook emails with the word “UiPath” in the subject, a developer should use the Filter property and the filter schema

“@SQL=""urn:schemas:httpmail:subject"" like '%UiPath%'”. The Filter property allows developers to specify a DASL query that filters the emails based on various criteria, such as subject, sender, date, etc. The filter schema “@SQL=""urn:schemas:httpmail:subject"" like '%UiPath%'” uses the SQL dialect of DASL to search for emails that have the word “UiPath” anywhere in the subject. The “%” symbol is a wildcard that matches any character or string. (UiPath Automation Developer study guide)

References:

? Get Outlook Mail Messages

? Chapter 11: Searching Outlook Data | Microsoft Learn

NEW QUESTION 116

A developer configured the properties for a Click activity as shown below:

Properties	
UiPath.UIAutomationNext.Activities.NClick	
[-] Common	
Continue on error	True [+] [✓] [...]
Delay after	Delay (in seconds) after this [+] [...]
Delay before	Delay (in seconds) to wait before [+] [...]
DisplayName	Click 'File'
Timeout	10 [+] [▼] [...]
[-] Input	
Click type	NClickType.Single [▼] [...]
Cursor motion type	Specifies the type of motion [▼] [...]
Mouse button	NMouseButton.Left [▼] [...]
[+] Target	TargetAnchorable
[+] Verify execution	(null)
[-] Input/Output Element	
Input element	The Input UI Element define [+] [...]
Output element	Output a UI Element to use [+] [...]
[-] Misc	
Private	<input type="checkbox"/>
[-] Options	
Alter disabled element	When selected, the activ [+] [■] [...]
Input mode	Hardware Events [▼]
Key modifiers	NKeyModifiers.None [▼] [...]

What happens if the activity cannot find its target at runtime?

- A. An exception is thrown after 10 seconds.
- B. The next activity is executed after 10 seconds.
- C. The next activity is executed after 10 milliseconds.
- D. An exception is thrown after 10 milliseconds.

Answer: A

Explanation:

If the activity cannot find its target at runtime, an exception is thrown after 10 seconds. This is because the “ContinueOnError” property is set to “False” and the “DelayAfter” property is set to “10” seconds. The “ContinueOnError” property determines whether the automation should continue even when the activity fails, and the “DelayAfter” property specifies the amount of time (in milliseconds) to wait before moving to the next activity. (UiPath Automation Developer study guide)

References:

? Click

? Common Properties

NEW QUESTION 118

Which action can be performed from UiPath Assistant?

- A. Set reminders for processes
- B. Set text assets for processes
- C. Set credential assets for processes
- D. Set queues for processes

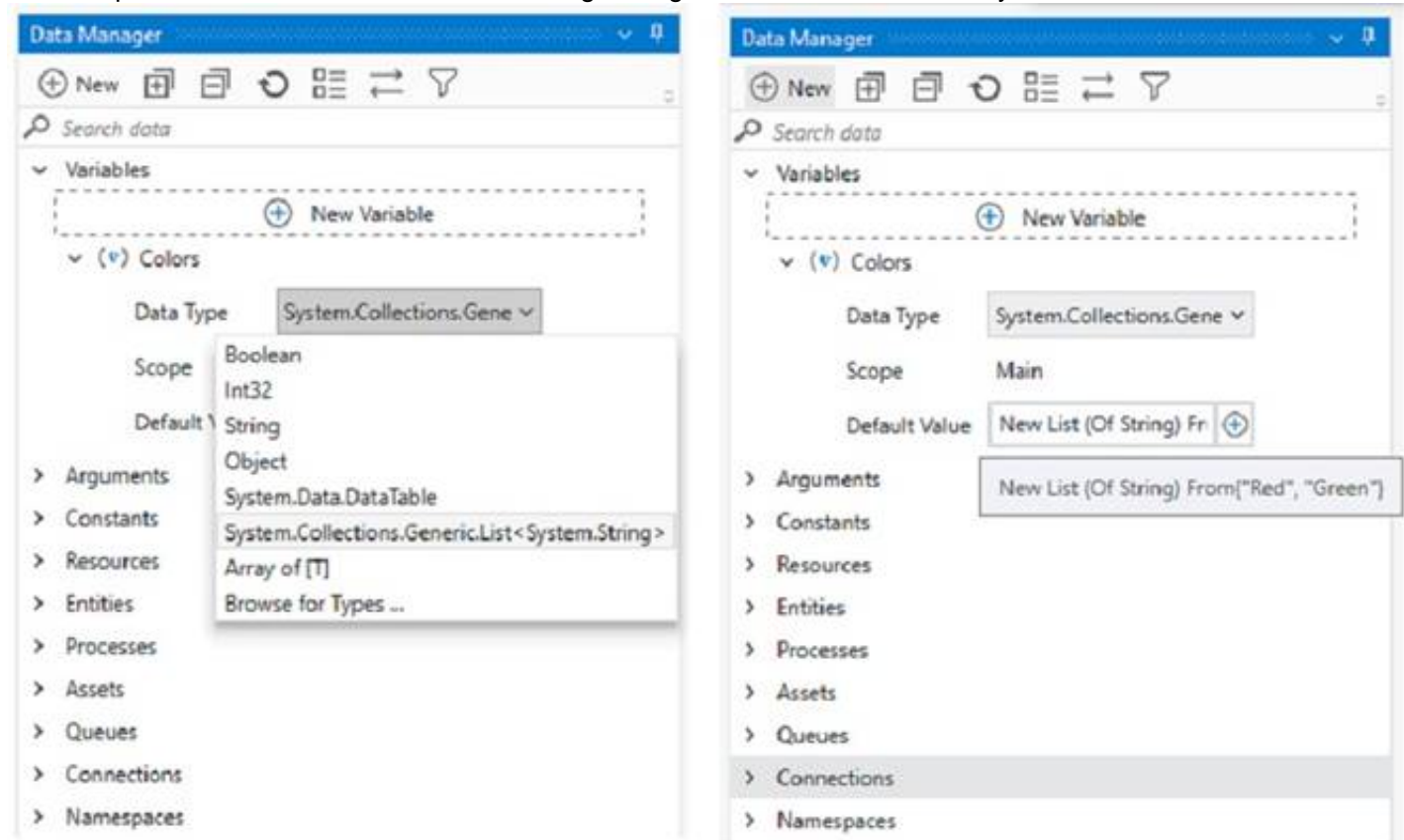
Answer: A

Explanation:

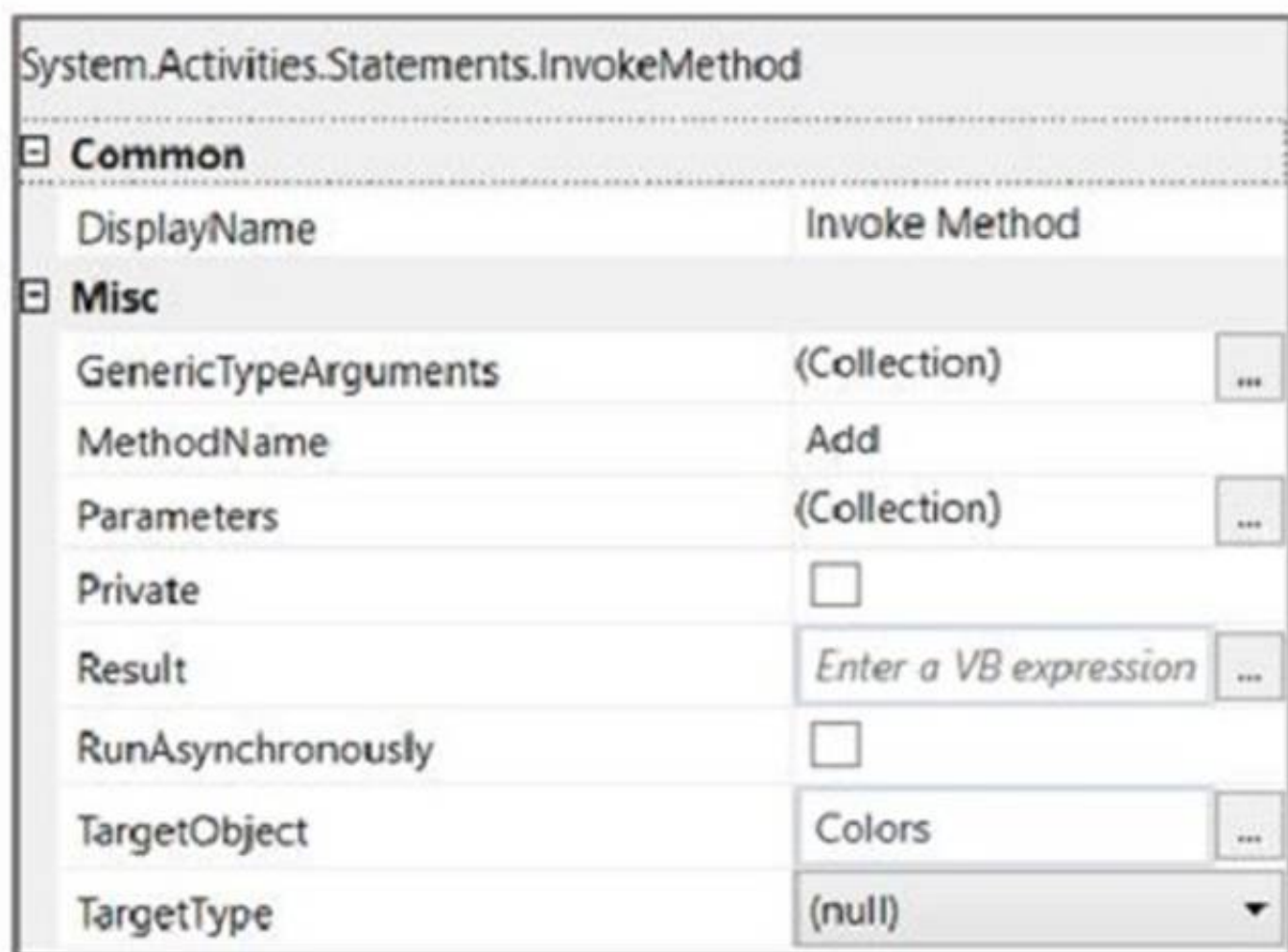
The action that can be performed from UiPath Assistant is setting reminders for processes. UiPath Assistant is a desktop application that allows users to view, manage, and run processes that are published from UiPath Studio or Orchestrator. UiPath Assistant also enables users to set reminders for processes that they want to execute at a specific time or date. Reminders can be added, edited, or deleted from the Reminders widget in UiPath Assistant. Reminders can also be organized into folders and configured with different options, such as recurrence, priority, or notification2. By setting reminders for processes, users can automate their tasks more efficiently and conveniently. References: UiPath Assistant and Reminders from UiPath documentation.

NEW QUESTION 121

A developer wants to add items to a list of strings using the Invoke Method activity. The list is declared as follows:



The Invoke Method includes the following properties:



The Parameters property is as follows:



Based on the exhibits, what is the outcome of this Invoke Method activity?

- A. Invoke Method activity will throw an error.
- B. Colors will contain items in the following order: "Yellow", "Red", "Green".
- C. Colors will contain items in the following order: "Red", "Green", "Yellow".
- D. Colors will contain items in the following order: "Red", "Green".

Answer: C

Explanation:

The Invoke Method activity is used to execute a method of a class or an object¹. In this case, the developer wants to add items to a list of strings using the Add method of the List class². The list is declared as Colors and initialized with two items:

“Red” and “Green”. The Invoke Method activity has the following properties:

? TargetObject: Colors (the list variable)

? MethodName: Add (the method of the List class)

? Parameters: Direction - In, Type - String, Value - “Yellow” (the item to be added to the list)

Based on these properties, the Invoke Method activity will add the string “Yellow” to the end of the Colors list. Therefore, the outcome of this Invoke Method activity is that Colors will contain items in the following order: “Red”, “Green”, “Yellow”.

Option A is incorrect because the Invoke Method activity will not throw an error, as the properties are configured correctly. Option B is incorrect because the order of the items in the list will not change, as the Add method appends the item to the end of the list. Option D is incorrect because the list will have three items, not two, as the Add method does not overwrite any existing item.

References:

? Invoke Method activity documentation from UiPath

? List<T>.Add(T) Method documentation from Microsoft

NEW QUESTION 123

A developer has defined a variable named "CurrentDate" of type Date Time. Which of the following expressions can be used to show what hour was 12 hours prior to the date from the variable?

A. CurrentDate.AddHours(-12).Hour

B. Date Time.SubtractHours(CurrentDate, 12).Hour

C. CurrentDate.SubtractHours(12).Hour

D. Date Time.AddHours(CurrentDate, -12).Hour

Answer: A

NEW QUESTION 127

DRAG DROP

What are the steps to publish a project from UiPath Studio?

Instructions: Drag the Description found on the "Left" and drop on the correct Step Sequence found on the "Right".

Description	Step Sequence
Fill in the necessary publishing details, such as the project name, version, and description.	
Click on the "Publish" button to initiate the publishing process.	
In the Design ribbon tab, click on the "Publish" button.	
Choose the desired publishing option, such as Orchestrator, Local, or Custom NuGet feed.	

A. Mastered

B. Not Mastered

Answer: A

Explanation:

The steps to publish a project from UiPath Studio are:

? In the Design ribbon tab, click on the “Publish” button. The Publish Project window opens. (UiPath Studio documentation1)

? Fill in the necessary publishing details, such as the project name, version, and description. You can also add release notes and select the environment where the project will run. (UiPath Studio documentation1)

? Choose the desired publishing option, such as Orchestrator, Local, or Custom NuGet feed. Depending on your choice, you may need to provide additional information, such as the Orchestrator URL, the local folder path, or the custom feed URL. (UiPath Studio documentation1)

? Click on the “Publish” button to initiate the publishing process. A confirmation message will appear when the project is successfully published. (UiPath Studio documentation1)

Short Explanation: Publishing a project from UiPath Studio means creating a package that contains all the files and dependencies required to run the automation process. The package can be deployed to different locations, such as Orchestrator, a local machine, or a custom NuGet feed. Publishing a project from UiPath Studio involves four main steps: clicking on the Publish button, filling in the publishing details, choosing the publishing option, and confirming the publishing process. (UiPath Automation Developer study guide2) References:

? 1: Publishing Projects from Studio - UiPath Studio.

? 2: UiPath Certified Automation Developer - Learning Plan.

NEW QUESTION 129

How does UiPath handle different dependency versions for multiple running processes that run at the same time?

A. Each running process uses its own required version of the dependency.

B. Running processes use the earliest compatible dependency version.

C. Each running process automatically adapts to the available dependency version.

D. All running processes use the latest version of the dependency available.

Answer: A

Explanation:

UiPath handles different dependency versions for multiple running processes that run at the same time by using a feature called Dependency Isolation. This feature ensures that each running process can use the specific version of the dependency that it needs, without affecting or being affected by other processes. This way, UiPath avoids conflicts and errors caused by incompatible or missing dependency versions. (UiPath Automation Developer study guide)

References:

? Dependency Isolation

? Managing Dependencies

NEW QUESTION 132

A developer has created a string array variable as shown below: UserNames = {"Jane", "Jack", "Jill", "John"}

Which expression should the developer use in a Log Message activity to print the elements of the array separated by the string ", "?

- A. String.Join(UserNames, ",")
- B. String.Join(", ", UserNames)
- C. String.Concat(UserNames, ",")
- D. String.Concat(", ", UserNames)

Answer: B

Explanation:

The String.Join method takes two parameters: a separator and an array of strings. It returns a new string that concatenates the elements of the array using the separator. The correct syntax is String.Join(separator, array). Therefore, option B is the correct answer. References:

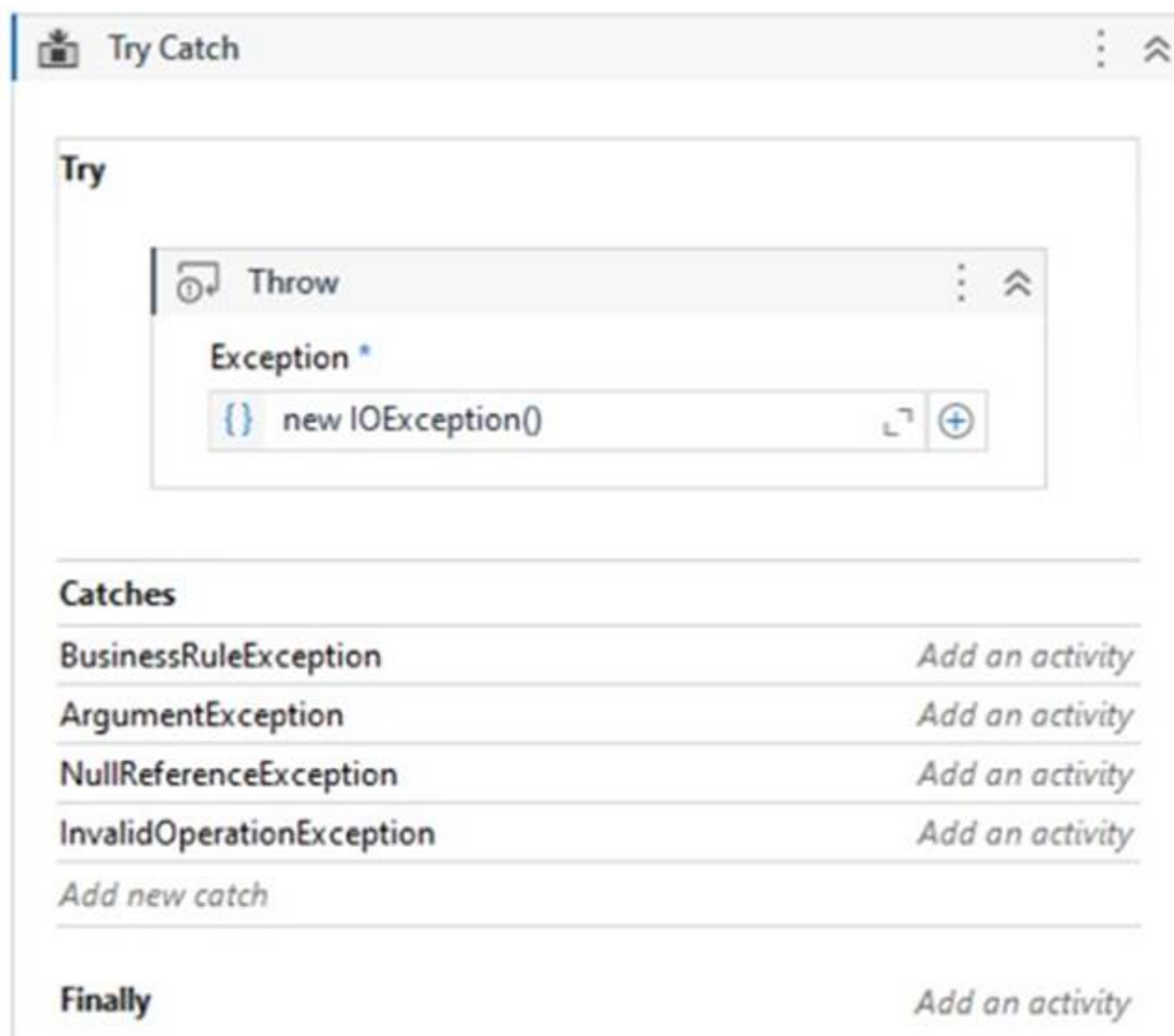
? Automation Developer Associate Training course, Section 1: Data Manipulation,

Lecture: Data Manipulation with Strings in Studio

? How to use Array of string forum post, Answer by @balupad14

NEW QUESTION 133

Consider the following Try Catch statement:



What will happen when the code is executed?

- A. The exception will be handled in the ArgumentException catch.
- B. There is no catch defined for the thrown exception type.
- C. The exception will be handled in the InvalidOperationException catch.
- D. The exception will be handled in the BusinessException catch.

Answer: B

Explanation:

This is because the code is throwing a new IOException, but there is no catch block defined for IOException. The catch blocks present are for BusinessException,

ArgumentException, and InvalidOperationException. Therefore, the code will not be able to handle the thrown exception. References:

<https://docs.uipath.com/activities/docs/try-catch>

NEW QUESTION 137

What happens when closing a Remote Debugging Connection while a debugging execution is in progress?

- A. Debugging execution stops gracefully, then the connection is closed.
- B. The remote robot continues the execution after Studio closes the connection.
- C. It is not possible to close the connection while debugging is in progress.
- D. Debugging execution ends in exception, then the connection is closed.

Answer: D

Explanation:

When you close a Remote Debugging Connection while a debugging execution is in progress, the execution is stopped abruptly and an exception is thrown on the remote robot. The connection is then closed and you are returned to the Studio interface. (Debugging in Studio - UiPath Academy)

References:

? Studio - Remote Debugging

? Debugging in Studio - UiPath Academy

NEW QUESTION 142

A developer configured the properties for a Click activity on an element inside a web page as shown in the following exhibit.

The screenshot shows the Properties window for a Click activity in UiPath Studio. The activity is named 'UiPath.UIAutomationNext.Activities.NClick'. The properties are organized into several sections:

- Common:**
 - Continue on error: Continue executing the activities in the automat (checkbox checked)
 - Delay after: Delay (in seconds) after this activity is completed, be (text box)
 - Delay before: Delay (in seconds) to wait before executing this acti (text box)
 - DisplayName: Click
 - Timeout: The amount of time (in seconds) to wait for the (dropdown menu)
- Input:**
 - Click type: NClickType.Single (dropdown menu)
 - Cursor motion type: Specifies the type of motion performed by the m (dropdown menu)
 - Mouse button: NMouseButton.Left (dropdown menu)
- Target:**
 - Click offset: (null)
 - Fuzzy selector: "<webctrl aria-role='button' type='submit' tag='IN (text box)
 - Native text: Enter a VB expression (text box)
 - Responsive websites: (checkbox unchecked)
 - Strict selector: "<webctrl aria-role='button' css-selector='body&g (text box)
 - Targeting methods: Strict selector (dropdown menu)
 - Visibility check: Interactive (for Fuzzy Selector) (dropdown menu)
 - Wait for page load: NWaitForReady.Interactive (dropdown menu)
 - Window selector (Application instance): "<html app='msedge.exe' title='' />" (text box)
- Verify execution:** (null)
- Input/Output Element:**
 - Input element: The Input UI Element defines the screen element tha (text box)
 - Output element: Output a UI Element to use in other activities as an (text box)
- Misc:**
 - Private: (checkbox unchecked)
- Options:**
 - Alter disabled element: When selected, the activity executes the action e (checkbox checked)
 - Input mode: Same as App/Browser (dropdown menu)
 - Key modifiers: NKeyModifiers.None (dropdown menu)

An animation on the web page never completely loads but the element indicated in the Click activity does load within the specified timeout duration. What occurs when this Click activity executes?

- A. Element is clicked once the element is fully loaded.
- B. Timeout error occurs without clicking on the element.
- C. Waits 10 seconds before clicking on the element.
- D. Continues to the next activity after 30 seconds without clicking on the element.

Answer: A

Explanation:

The Click activity is used to simulate a mouse click on a specified UI element, such as a button or a link1. It has several properties that can be configured to customize its behavior, such as the input method, the click type, the timeout, and the wait for ready1.

? The input method determines how the click is performed. It can be Default,

Simulate, or Window Messages. The Default method uses the hardware driver to simulate the click, and it requires the target element to be visible and in focus.

The Simulate and Window Messages methods use the technology of the target application to inject the click, and they can work in the background, even if the target element is hidden or minimized2.

? The click type determines which mouse button is used for the click. It can be Single, Double, Down, or Up. The Single and Double types perform a single or double click using the left mouse button. The Down and Up types perform a press or release action using any mouse button1.

? The timeout determines how long the activity waits for the target element to appear before throwing an error. It is measured in milliseconds, and it has a default value of 30000 (30 seconds). If the timeout is exceeded, the activity fails with a TimeoutException1.

? The wait for ready determines when the activity executes. It can be None, Interactive, or Complete. The None option executes the activity immediately. The Interactive option executes the activity after the target element is loaded. The Complete option executes the activity after the target application is loaded1.

In your case, you have configured the properties for the Click activity as follows:

? Input method: Simulate

? Click type: Single

? Timeout: 30000

? Wait for ready: Complete

This means that the Click activity will use the Simulate method to perform a single click on the target element in the background, after waiting for 30 seconds or until the target application is fully loaded, whichever comes first.

Since you have mentioned that an animation on the web page never completely loads but the element indicated in the Click activity does load within the specified timeout duration, what occurs when this Click activity executes is:

Element is clicked once the element is fully loaded.

This is because the Simulate method can work in the background, even if the web page is hidden or minimized, and it does not depend on the animation to complete. The Complete option for wait for ready ensures that the Click activity waits until the target element is loaded before clicking on it. The timeout value of 30000 does not affect this scenario, because it is not exceeded.

Therefore, option A is correct.

References:

? Click - UiPath Documentation Portal.

? What are different Input methods in UiPath - UiPath Community Forum.

NEW QUESTION 146

.....

Thank You for Trying Our Product

* 100% Pass or Money Back

All our products come with a 90-day Money Back Guarantee.

* One year free update

You can enjoy free update one year. 24x7 online support.

* Trusted by Millions

We currently serve more than 30,000,000 customers.

* Shop Securely

All transactions are protected by VeriSign!

100% Pass Your UiPath-ADAv1 Exam with Our Prep Materials Via below:

<https://www.certleader.com/UiPath-ADAv1-dumps.html>