



Cisco

Exam Questions 350-401

Implementing and Operating Cisco Enterprise Network Core Technologies

About ExamBible

[Your Partner of IT Exam](#)

Found in 1998

ExamBible is a company specialized on providing high quality IT exam practice study materials, especially Cisco CCNA, CCDA, CCNP, CCIE, Checkpoint CCSE, CompTIA A+, Network+ certification practice exams and so on. We guarantee that the candidates will not only pass any IT exam at the first attempt but also get profound understanding about the certificates they have got. There are so many alike companies in this industry, however, ExamBible has its unique advantages that other companies could not achieve.

Our Advances

* 99.9% Uptime

All examinations will be up to date.

* 24/7 Quality Support

We will provide service round the clock.

* 100% Pass Rate

Our guarantee that you will pass the exam.

* Unique Gurantee

If you do not pass the exam at the first time, we will not only arrange FULL REFUND for you, but also provide you another exam of your claim, ABSOLUTELY FREE!

NEW QUESTION 1

A network administrator is implementing a routing configuration change and enables routing debugs to track routing behavior during the change. The logging output on the terminal is interrupting the command typing process. Which two actions can the network administrator take to minimize the possibility of typing commands incorrectly? (Choose two.)

- A. Configure the logging synchronous global configuration command
- B. Configure the logging delimiter feature
- C. Configure the logging synchronous command under the vty
- D. Press the TAB key to reprint the command in a new line
- E. increase the number of lines on the screen using the terminal length command

Answer: CD

NEW QUESTION 2

Refer to the exhibit.

```
<?xml version="1.0" encoding="utf-8"?>
  <data xmlns="urn:ietf:params:xml:ns:netconf:base:1.0"/>
```

What does the error message relay to the administrator who is trying to configure a Cisco IOS device?

- A. A NETCONF request was made for a data model that does not exist.
- B. The device received a valid NETCONF request and serviced it without error.
- C. A NETCONF message with valid content based on the YANG data models was made, but the request failed.
- D. The NETCONF running datastore is currently locked.

Answer: A

Explanation:

3. Missing Data Model RPC Error Reply Message

If a request is made for a data model that doesn't exist on the Catalyst 3 response. This is expected behavior.



Tip: Use the NETCONF capabilities functionality to determine which

```
<?xml version="1.0" encoding="utf-8"?>
<data xmlns="urn:ietf:params:xml:ns:netconf:base:1.0"/>
```

NEW QUESTION 3

Which devices does Cisco DNA Center configure when deploying an IP-based access control policy?

- A. All devices integrating with ISE
- B. selected individual devices
- C. all devices in selected sites
- D. all wired devices

Answer: A

Explanation:

When you click Deploy, Cisco DNA Center requests the Cisco Identity Services Engine (Cisco ISE) to send notifications about the policy changes to the network devices.

NEW QUESTION 4

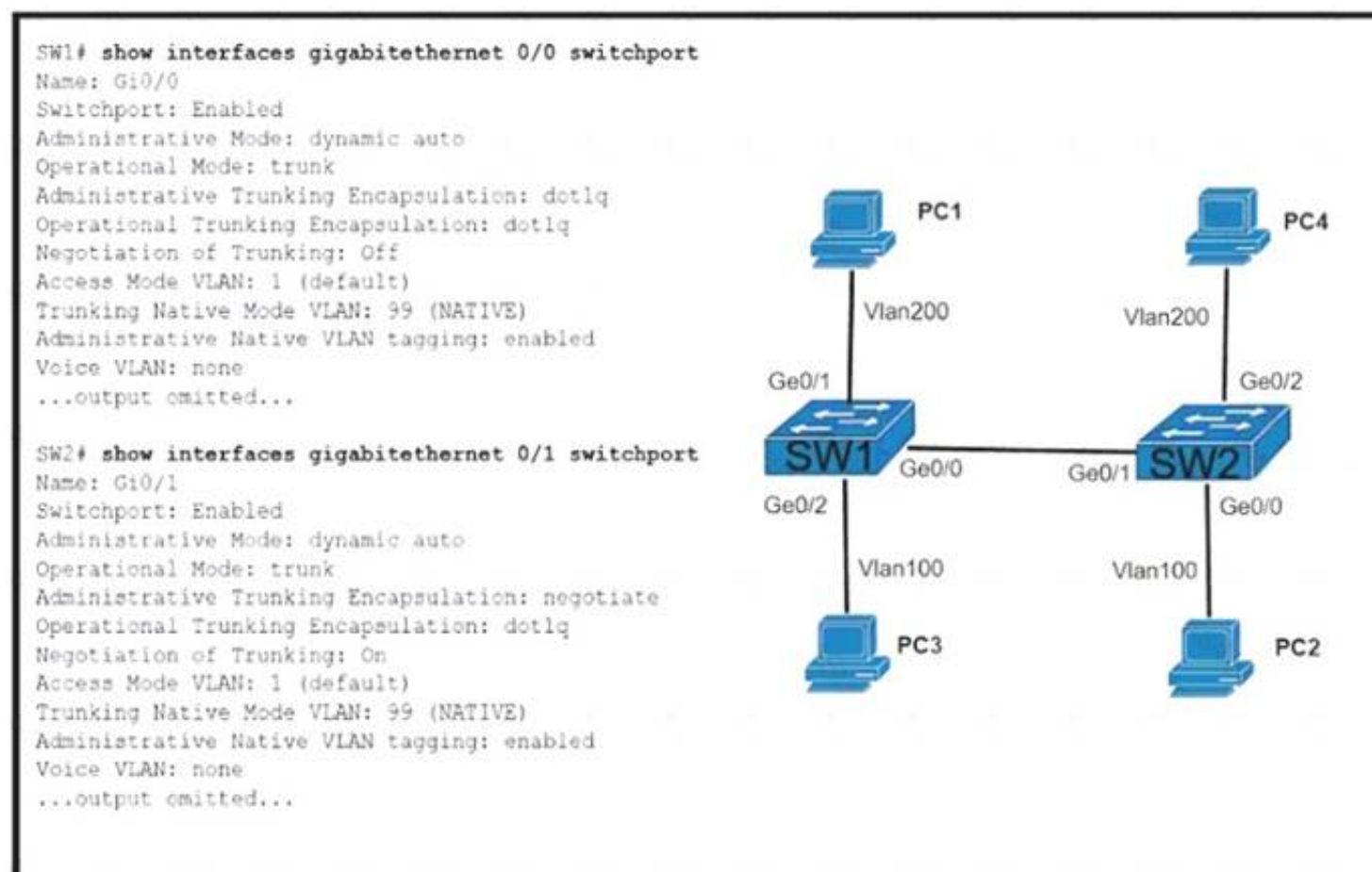
While configuring an IOS router for HSRP with a virtual IP of 10.1.1.1, an engineer sees this log message.

- A. Change the HSRP group configuration on the remote router to 1.
- B. Change the HSRP group configuration on the local router to 1.
- C. Change the HSRP virtual address on the remote router to 10.1.1.1
- D. Change the HSRP virtual address on the local router to 10.1.1.1

Answer: B

NEW QUESTION 5

Refer to the exhibit.



The connecting between SW1 and SW2 is not operational. Which two actions resolve the issue? (Choose two)

- A. configure switchport mode access on SW2
- B. configure switchport nonegotiate on SW2
- C. configure switchport mode trunk on SW2
- D. configure switchport nonegotiate on SW1
- E. configure switchport mode dynamic desirable on SW2

Answer: CE

NEW QUESTION 6

Which AP mode allows an engineer to scan configured channels for rogue access points?

- A. sniffer
- B. monitor
- C. bridge
- D. local

Answer: B

NEW QUESTION 7

A company plans to implement intent-based networking in its campus infrastructure. Which design facilitates a migrate from a traditional campus design to a programmer fabric designer?

- A. Layer 2 access
- B. three-tier
- C. two-tier
- D. routed access

Answer: C

NEW QUESTION 8

Which measurement is used from a post wireless survey to depict the cell edge of the access points?

- A. SNR
- B. Noise
- C. RSSI
- D. CCI

Answer: A

NEW QUESTION 9

Refer to the exhibit.

```
R2#show standby
FastEthernet1/0 - Group 50
  State is Active
    2 state changes, last state change 00:04:02
  Virtual IP address is 10.10.1.1
  Active virtual MAC address is 0000.0c07.ac32 (MAC In Use)
  Local virtual MAC address is 0000.0c07.ac32 (v1 default)
  Hello time 3 sec, hold time 10 sec
  Next hello sent in 1.504 secs
  Preemption enabled, delay reload 90 secs
  Active router is local
  Standby router is unknown
  Priority 200 (configured 200)
  Track interface FastEthernet0/0 state Up decrement 20
  Group name is "harp-Fal/0-50" (default)
R2#
%IP-4-DUPADDR: Duplicate address 10.10.1.1 on FastEthernet1/0, sourced by 0000.0c07.ac28
R2#
```

An engineer configures a new HSRP group. While reviewing the HSRP status, the engineer sees the logging message generated on R2. Which is the cause of the message?

- A. The same virtual IP address has been configured for two HSRP groups
- B. The HSRP configuration has caused a spanning-tree loop
- C. The HSRP configuration has caused a routing loop
- D. A PC is on the network using the IP address 10.10.1.1

Answer: A

NEW QUESTION 10

What are two benefits of virtual switching when compared to hardware switching? (Choose two.)

- A. increased MTU size
- B. hardware independence
- C. VM-level isolation
- D. increased flexibility
- E. extended 802.1Q VLAN range

Answer: CD

NEW QUESTION 10

An engineer must provide wireless converge in a square office. The engineer has only one AP and believes that it should be placed it in the middle of the room. Which antenna type should the engineer use?

- A. directional
- B. polarized
- C. Yagi
- D. omnidirectional

Answer: D

NEW QUESTION 12

A network administrator has designed a network with two multilayer switches on the distribution layer, which act as default gateways for the end hosts. Which two technologies allow every end host in a VLAN to use both gateways? (Choose two)

- A. GLBP
- B. HSRP
- C. MHSRP
- D. VSS
- E. VRRP

Answer: CE

NEW QUESTION 13

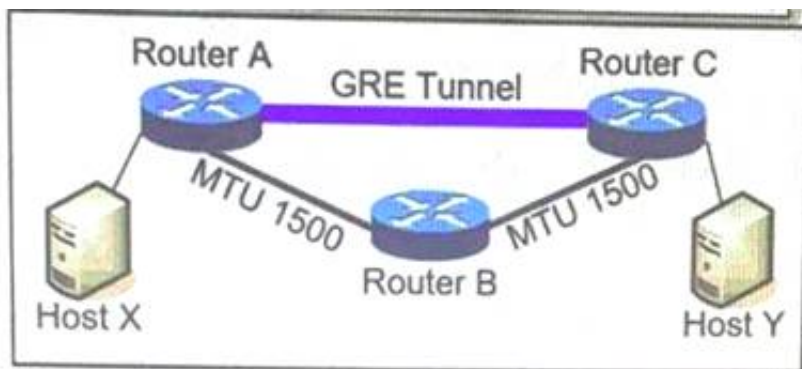
What is YANG used for?

- A. scraping data via CLI
- B. processing SNMP read-only polls
- C. describing data models
- D. providing a transport for network configuration data between client and server

Answer: C

NEW QUESTION 18

Refer to Exhibit.



MTU has been configured on the underlying physical topology, and no MTU command has been configured on the tunnel interfaces. What happens when a 1500-byte IPv4 packet traverses the GRE tunnel from host X to host Y, assuming the DF bit is cleared?

- A. The packet arrives on router C without fragmentation.
- B. The packet is discarded on router A
- C. The packet is discarded on router B
- D. The packet arrives on router C fragmented.

Answer: D

Explanation:

Text Description automatically generated

Like any protocol, using GRE adds a few bytes to the size of data packets. This must be factored into the MSS and MTU settings for packets. If the MTU is 1,500 bytes and the MSS is 1,460 bytes (to account for the size of the necessary IP and TCP headers), the addition of GRE 24-byte headers will cause the packets to exceed the MTU:

$$1,460 \text{ bytes [payload]} + 20 \text{ bytes [TCP header]} + 20 \text{ bytes [IP header]} + 24 \text{ bytes [GRE header + IP header]} = 1,524 \text{ bytes}$$

As a result, the packets will be fragmented. Fragmentation slows down packet delivery times and increases how much compute power is used, because packets that exceed the MTU must be broken down and then reassembled.

NEW QUESTION 22

Refer to the exhibit.

```
Router2# show policy-map control-plane

Control Plane
Service-policy input:CISCO
Class-map:CISCO (match-all)
  20 packets, 11280 bytes
  5 minute offered rate 0 bps, drop rate 0 bps
  Match:access-group 120
  police:
    8000 bps, 1500 limit, 1500 extended limit
    conformed 15 packets, 6210 bytes; action:transmit
    exceeded 5 packets, 5070 bytes; action:drop
    violated 0 packets, 0 bytes; action:drop
    conformed 0 bps, exceed 0 bps, violate 0 bps
  Class-map:class-default (match-any)
    105325 packets, 11415151 bytes
    5 minute offered rate 0 bps, drop rate 0 bps
    Match:any
```

An engineer configures CoPP and enters the show command to verify the implementation. What is the result of the configuration?

- A. All traffic will be policed based on access-list 120.
- B. If traffic exceeds the specified rate, it will be transmitted and remarked.
- C. Class-default traffic will be dropped.
- D. ICMP will be denied based on this configuration.

Answer: A

NEW QUESTION 25

Which two operations are valid for RESTCONF? (Choose two.)

- A. HEAD
- B. REMOVE
- C. PULL

- D. PATCH
- E. ADD
- F. PUSH

Answer: AD

Explanation:

RESTCONF operations include OPTIONS, HEAD, GET, POST, PATCH, DELETE.

NEW QUESTION 28

What is a consideration when designing a Cisco SD-Access underlay network?

- A. End user subnets and endpoints are part of the underlay network.
- B. The underlay switches provide endpoint physical connectivity for users.
- C. Static routing is a requirement,
- D. It must support IPv4 and IPv6 underlay networks

Answer: A

NEW QUESTION 31

Which AP mode allows an engineer to scan configured channels for rogue access points?

- A. sniffer
- B. monitor
- C. bridge
- D. local

Answer: B

NEW QUESTION 35

Which method creates an EEM applet policy that is registered with EEM and runs on demand or manually?

- A. event manager applet ondemand event registeraction 1.0 syslog priority critical msg 'This is a message from ondemand'
- B. event manager applet ondemand event manualaction 1.0 syslog priority critical msg 'This is a message from ondemand'
- C. event manager applet ondemand event noneaction 1.0 syslog priority critical msg 'This is a message from ondemand'
- D. event manager applet ondemandaction 1.0 syslog priority critical msg 'This is a message from ondemand'

Answer: C

Explanation:

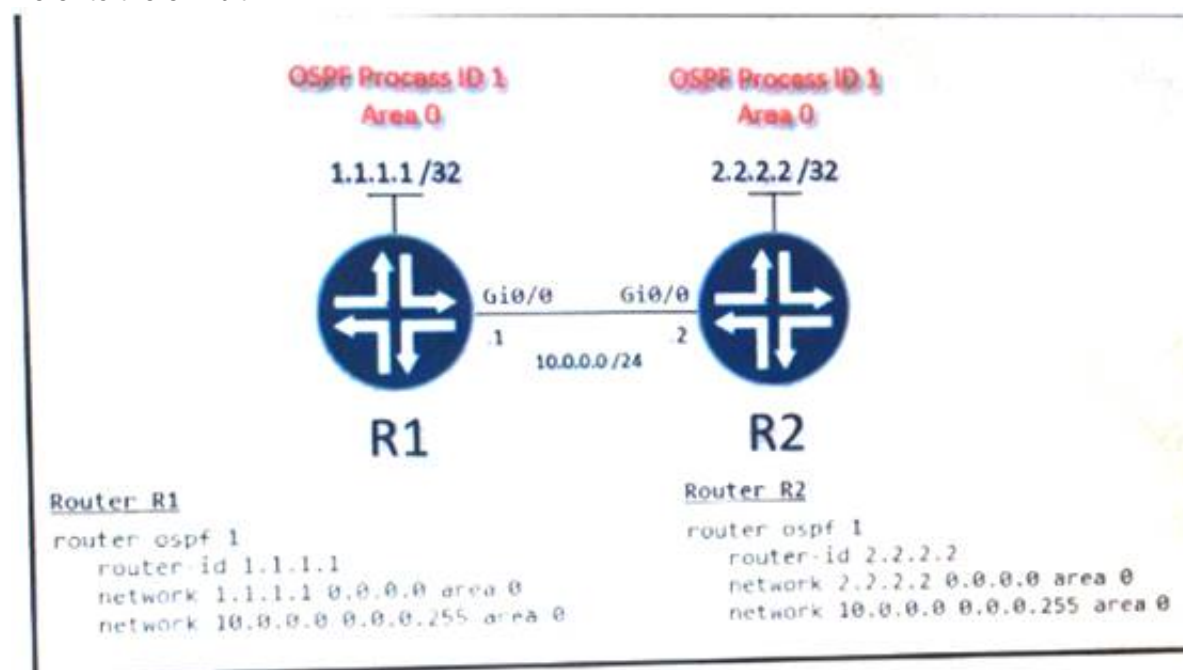
An EEM policy is an entity that defines an event and the actions to be taken when that event occurs. There are two types of EEM policies: an applet or a script. An applet is a simple form of policy that is defined within the CLI configuration. answer 'event manager applet ondemand event register action 1.0 syslog priority critical msg 'This is a message from ondemand'

<="" p="" style="border: 1px solid black; padding: 5px; margin: 5px 0;">

There are two ways to manually run an EEM policy. EEM usually schedules and runs policies on the basis of an event specification that is contained within the policy itself. The event none command allows EEM to identify an EEM policy that can be manually triggered. To run the policy, use either the action policy command in applet configuration mode or the event manager run command in privileged EXEC mode.

NEW QUESTION 39

Refer to the exhibit.



A network engineer is configuring OSPF between router R1 and router R2. The engineer must ensure that a DR/BDR election does not occur on the Gigabit Ethernet interfaces in area 0. Which configuration set accomplishes this goal?

- A)
- ```
R1(config-if)interface Gi0/0
R1(config-if)ip ospf network point-to-point

R2(config-if)interface Gi0/0
R2(config-if)ip ospf network point-to-point
```
- B)
- ```
R1(config-if)interface Gi0/0
R1(config-if)ip ospf network broadcast

R2(config-if)interface Gi0/0
R2(config-if)ip ospf network broadcast
```
- C)
- ```
R1(config-if)interface Gi0/0
R1(config-if)ip ospf database-filter all out

R2(config-if)interface Gi0/0
R2(config-if)ip ospf database-filter all out
```
- D)
- ```
R1(config-if)interface Gi0/0
R1(config-if)ip ospf priority 1

R2(config-if)interface Gi0/0
R2(config-if)ip ospf priority 1
```

- A. Option A
 B. Option B
 C. Option C
 D. Option D

Answer: A

Explanation:

Broadcast and Non-Broadcast networks elect DR/BDR while Point-to-point/ multipoint do not elect DR/BDR. Therefore we have to set the two Gi0/0 interfaces to point-to-point or point-to-multipoint network to ensure that a DR/BDR election does not occur.

NEW QUESTION 42

Which LISP component is required for a LISP site to communicate with a non-LISP site?

- A. ETR
 B. ITR
 C. Proxy ETR
 D. Proxy ITR

Answer: C

NEW QUESTION 45

Refer to the exhibit

```
{
  "Cisco-IOS-XE-native:GigabitEthernet": {
    "name": "1",
    "vrf": {
      "forwarding": "MANAGEMENT"
    },
    "ip": {
      "address": {
        "primary": {
          "address": "10.0.0.151",
          "mask": "255.255.255.0"
        }
      }
    },
    "mop": {
      "enabled": false
    },
    "Cisco-IOS-XE-ethernet:negotiation": {
      "auto": true
    }
  }
}
```

Drag and drop the snippets into the RESTCONF request to form the request that returns this response Not all options are used

URL - `http://10.10.10.10/restconf/api/running/native/`

HTTP Verb-

Body- N/A

Headers- -application/vnd.yang.data+json

Authentication-privileged level 15 credentials

POST	Accept	Cisco-IOS-XE
interface/GigabitEthernet/1/	GET	PUT

- A. Mastered
B. Not Mastered

Answer: A

Explanation:

URL - `http://10.10.10.10/restconf/api/running/native/`

HTTP Verb-

Body- N/A

Headers- -application/vnd.yang.data+json

Authentication-privileged level 15 credentials

POST		Cisco-IOS-XE
		PUT

NEW QUESTION 46

In a wireless Cisco SD-Access deployment, which roaming method is used when a user moves from one access point to another on a different access switch using a single WLC?

- A. Layer 3
B. inter-xTR
C. auto anchor
D. fast roam

Answer: D

NEW QUESTION 49

In cisco SD_WAN, which protocol is used to measure link quality?

- A. OMP
B. BFD
C. RSVP
D. IPsec

Answer: B

NEW QUESTION 54

"HTTP/1.1 204 content" is returned when `curl -I -x delete` command is issued. Which situation has occurred?

- A. The object could not be located at the URI path.
B. The command succeeded in deleting the object
C. The object was located at the URI, but it could not be deleted.
D. The URI was invalid

Answer: B

NEW QUESTION 58

What is the function of cisco DNA center in a cisco SD-access deployment?

- A. It is responsible for routing decisions inside the fabric
- B. It is responsible for the design, management, deployment, provisioning and assurance of the fabric network devices.
- C. It possesses information about all endpoints, nodes and external networks related to the fabric
- D. It provides integration and automation for all nonfabric nodes and their fabric counterparts.

Answer: B

NEW QUESTION 63

Drag and drop the virtual components from the left onto their deceptions on the right.

VNIC	zip file connecting a virtual machine configuration file and a virtual disk
OVA	file containing a virtual machine disk drive
VMDK	configuration file containing settings for a virtual machine such as guest OS
VMX	component of a virtual machine responsible for sending packets to the hypervisor

- A. Mastered
- B. Not Mastered

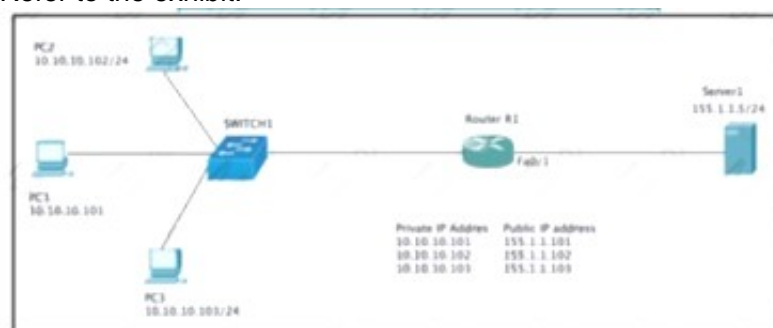
Answer: A

Explanation:

VNIC	zip file connecting a virtual machine configuration file and a virtual disk
OVA	file containing a virtual machine disk drive
VMDK	configuration file containing settings for a virtual machine such as guest OS
VMX	component of a virtual machine responsible for sending packets to the hypervisor

NEW QUESTION 67

Refer to the exhibit.



Which set of commands on router r R1 Allow deterministic translation of private hosts PC1, PC2, and PC3 to addresses in the public space?

A)

```
RouterR1(config)#int f0/0
RouterR1(config-if)#ip nat inside
RouterR1(config-if)#exit
RouterR1(config)#int f0/1
RouterR1(config-if)#ip nat outside
RouterR1(config-if)#exit
RouterR1(config)#ip nat inside source static 10.10.10.101 155.1.1.101
RouterR1(config)#ip nat inside source static 10.10.10.102 155.1.1.102
RouterR1(config)#ip nat inside source static 10.10.10.103 155.1.1.103
```

B)

```
RouterR1(config)#int f0/0
RouterR1(config-if)#ip nat inside
RouterR1(config-if)#exit
RouterR1(config)#int f0/1
RouterR1(config-if)#ip nat outside
RouterR1(config-if)#exit
RouterR1(config)#ip nat inside source static 10.10.10.101 155.1.1.101
RouterR1(config)#ip nat inside source static 10.10.10.102 155.1.1.102
RouterR1(config)#ip nat inside source static 10.10.10.103 155.1.1.103
```

C)

```
RouterR1(config)#int f0/0
RouterR1(config-if)#ip nat inside
RouterR1(config-if)#exit
RouterR1(config)#int f0/1
RouterR1(config-if)#ip nat outside
RouterR1(config-if)#exit
RouterR1(config)#access-list 1 10.10.10.0 0.0.0.255
RouterR1(config)#ip nat pool POOL 155.1.1.101 155.1.1.103 netmask 255.255.255.0
RouterR1(config)#ip nat inside source list 1 pool POOL
```

D)

```
RouterR1(config)#int f0/0
RouterR1(config-if)#ip nat inside
RouterR1(config-if)#exit
RouterR1(config)#int f0/1
RouterR1(config-if)#ip nat outside
RouterR1(config-if)#exit
RouterR1(config)#access-list 1 10.10.10.0 0.0.0.255
RouterR1(config)#ip nat inside source list 1 interface f0/1 overload
```

- A. Option A
- B. Option B
- C. Option C
- D. Option D

Answer: A

NEW QUESTION 71

Refer to the exhibit.

```
ip vrf BLUE
 rd 1:1
!
interface Vlan100
 description GLOBAL_INTERFACE
 ip address 10.10.1.254 255.255.255.0
!
access-list 101 permit ip 10.10.5.0 0.0.0.255 10.10.1.0
255.255.255.0
!
route-map VRF_TO_GLOBAL permit 10
 match ip address 101
 set global
!
interface Vlan500
 description VRF_BLUE
 ip vrf forwarding BLUE
 ip address 10.10.5.254 255.255.255.0
 ip policy route-map VRF_TO_GLOBAL
```

An engineer attempts to create a configuration to allow the Blue VRF to leak into the global routing table, but the configuration does not function as expected. Which action resolves this issue?

- A. Change the access-list destination mask to a wildcard.
- B. Change the source network that is specified in access-list 101.
- C. Change the route-map configuration to VRF_BLUE.
- D. Change the access-list number in the route map

Answer: A

NEW QUESTION 72

Refer to the exhibit.

```
aaa new-model
aaa authentication login default local-case enable
aaa authentication login ADMIN local-case
username CCNP secret Str0ngP@ssw0rd!
line 0 4
  login authentication ADMIN
```

An engineer must create a configuration that executes the show run command and then terminates the session when user CCNP logs in. Which configuration change is required"

- A. Add the access-class keyword to the username command
- B. Add the access-class keyword to the aaa authentication command
- C. Add the autocommand keyword to the username command
- D. Add the autocommand keyword to the aaa authentication command

Answer: C

Explanation:

The autocommand causes the specified command to be issued automatically after the user logs in. When the command is complete, the session is terminated. Because the command can be any length and can contain embedded spaces, commands using the autocommand keyword must be the last option on the line. In this specific question, we have to enter this line username CCNP autocommand show running-config.

NEW QUESTION 77

An engineer is implementing a Cisco MPLS TE tunnel to improve the streaming experience for the clients of a video-on-demand server. Which action must the engineer perform to configure extended discovery to support the MPLS LDP session between the headend and tailend routers?

- A. Configure the interface bandwidth to handle TCP and UDP traffic between the LDP peers
- B. Configure a Cisco MPLS TE tunnel on both ends of the session
- C. Configure an access list on the interface to permit TCP and UDP traffic
- D. Configure a targeted neighbor session.

Answer: B

NEW QUESTION 80

Refer to the exhibit.

R1 key chain cisco123 key 1 key-string cisco123!	R2 key chain cisco123 key 1 key-string cisco123!
Ethernet0/0 - Group 10 State is Active 6 state changes, last state change 00:02:49 Virtual IP address is 192.168.0.1 Active virtual MAC address is 0000.0c07.ac0a	Ethernet0/0 - Group 10 State is Active 17 state changes, last state change 00:02:17 Virtual IP address is 192.168.0.1 Active virtual MAC address is 0000.0c07.ac0a

An engineer is installing a new pair of routers in a redundant configuration. Which protocol ensures that traffic is not disrupted in the event of a hardware failure?

- A. HSRPv1
- B. GLBP
- C. VRRP
- D. HSRPv2

Answer: A

Explanation:

The virtual MAC address is 0000.0c07.acXX (XX is the hexadecimal group number) so it is using HSRPv1. Note: HSRP Version 2 uses a new MAC address which ranges from 0000.0C9F.F000 to 0000.0C9F.FFFF.

NEW QUESTION 83

How is MSDP used to interconnect multiple PIM-SM domains?

- A. MSDP depends on BGP or multiprotocol BGP for mterdomam operation
- B. MSDP SA request messages are used to request a list of active sources for a specific group
- C. SDP allows a rendezvous point to dynamically discover active sources outside of its domain
- D. MSDP messages are used to advertise active sources in a domain

Answer: A

NEW QUESTION 88

Which network devices secure API platform?

- A. next-generation intrusion detection systems
- B. Layer 3 transit network devices
- C. content switches
- D. web application firewalls

Answer: A

NEW QUESTION 92

An engineer must configure HSRP group 300 on a Cisco IOS router. When the router is functional, it must be the active HSRP router. The peer router has been configured using the default priority value. Which command set is required?

A)

```
standby 300 priority 110
standby 300 timers 1 110
```

B)

```
standby version 2
standby 300 priority 110
standby 300 preempt
```

C)

```
standby 300 priority 90
standby 300 preempt
```

D)

```
standby version 2
standby 300 priority 90
standby 300 preempt
```

A. Option A

B. Option B

C. Option C

D. Option D

Answer: B

NEW QUESTION 97

An engineer runs the code against an API of Cisco DNA Center, and the platform returns this output What does the response indicate?

```
import requests
import sys
import urllib3

urllib3.disable_warnings(urllib3.exceptions.InsecureRequestWarning)

def main():
    device_uri = "https://192.168.1.1/dna/system/api/v1/auth/token"
    http_result = requests.get(device_uri, auth=("root", 'test398586070!'))
    print(http_result)
    if http_result.status_code != requests.codes.ok:
        print('Call failed! Review get_token() . ')
        sys.exit()
    print(http_result.json()["Token"])

if __name__ == "__main__":
    sys.exit(main())
```

Output

```
$ python get_token.py
<Response [405]>
Call failed! Review get_token ().
```

A. The authentication credentials are incorrect

B. The URI string is incorrect.

C. The Cisco DNA Center API port is incorrect

D. The HTTP method is incorrect

Answer: A

NEW QUESTION 99

Which exhibit displays a valid JSON file?


```
{
  "hostname": "edge_router_1"
  "interfaces": {
    "GigabitEthernet1/1"
    "GigabitEthernet1/2"
    "GigabitEthernet1/3"
  }
}
```

```
{
  "hostname": "edge_router_1",
  "interfaces": {
    "GigabitEthernet1/1",
    "GigabitEthernet1/2",
    "GigabitEthernet1/3",
  },
}
```

```
{
  "hostname": "edge_router_1"
  "interfaces": {
    "GigabitEthernet1/1"
    "GigabitEthernet1/2"
    "GigabitEthernet1/3"
  }
}
```

```
{
  "hostname": "edge_router_1",
  "interfaces": {
    "GigabitEthernet1/1",
    "GigabitEthernet1/2",
    "GigabitEthernet1/3"
  }
}
```

- A. Option A
- B. Option B
- C. Option C
- D. Option D

Answer: D

NEW QUESTION 103

Drag and drop the characteristics from the left onto the routing protocols they describe on the right.

supports virtual links

can automatically summarize networks at the boundary

requires manual configuration of network summarization

EIGRP

OSPF

- A. Mastered
- B. Not Mastered

Answer: A

Explanation:

supports virtual links

can automatically summarize networks at the boundary

requires manual configuration of network summarization

EIGRP

OSPF

NEW QUESTION 104

What is one difference between saltstack and ansible?

- A. SaltStack uses an API proxy agent to program Cisco boxes on agent mode, whereas Ansible uses a Telnet connection

- B. SaltStack uses the Ansible agent on the box, whereas Ansible uses a Telnet server on the box
- C. SaltStack is constructed with minion, whereas Ansible is constructed with YAML
- D. SaltStack uses SSH to interact with Cisco devices, whereas Ansible uses an event bus

Answer: A

NEW QUESTION 107

An engineer has deployed a single Cisco 5520 WLC with a management IP address of 172.16.50.5/24. The engineer must register 50 new Cisco AIR-CAP2802I-E-K9 access points to the WLC using DHCP option 43. The access points are connected to a switch in VLAN 100 that uses the 172.16.100.0/24 subnet. The engineer has configured the DHCP scope on the switch as follows:

```
Network 172.16.100.0 255.255.255.0
Default Router 172.16.100.1
Option 43 Ascii 172.16.50.5
```

The access points are failing to join the wireless LAN controller. Which action resolves the issue?

- A. configure option 43 Hex F104.AC10.3205
- B. configure option 43 Hex F104.CA10.3205
- C. configure dns-server 172.16.50.5
- D. configure dns-server 172.16.100.1

Answer: B

NEW QUESTION 109

What is one benefit of implementing a VSS architecture?

- A. It provides multiple points of management for redundancy and improved support
- B. It uses GLBP to balance traffic between gateways.
- C. It provides a single point of management for improved efficiency.
- D. It uses a single database to manage configuration for multiple switches

Answer: D

NEW QUESTION 112

Refer to the exhibit.

```
username admin privilege 15 password 0 Cisco13579!
aaa new-model
!
aaa authentication login default local
aaa authentication enable default none
!
aaa common-criteria policy Administrators
  min-length 1
  max-length 127
  char-changes 4
  lifetime month 2
!
```

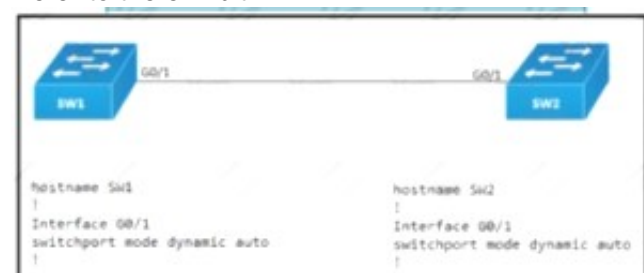
A network engineer must configure a password expiry mechanism on the gateway router for all local passwords to expire after 60 days. What is required to complete this task?

- A. The password expiry mechanism is on the AAA server and must be configured there.
- B. Add the aaa authentication enable default Administrators command.
- C. Add the username admin privilege 15 common-criteria*policy Administrators password 0 Cisco13579! command.
- D. No further action is required
- E. The configuration is complete.

Answer: A

NEW QUESTION 114

Refer to the exhibit.



An engineer attempts to configure a trunk between switch sw1 and switch SW2 using DTP, but the trunk does not form. Which command should the engineer apply to switch SW2 to resolve this issue?

- A. switchport mode dynamic desirable
- B. switchport nonegotiate
- C. no switchport
- D. switchport mode access

Answer: A

NEW QUESTION 117

An engineer measures the Wi-Fi coverage at a customer site. The RSSI values are recorded as follows:

- Location A: -72 dBm
- Location B: -75 dBm
- Location C: -85 dBm
- Location D: -80 dBm

Which two statements does the engineer use to explain these values to the customer? (Choose two)

- A. The signal strength at location C is too weak to support web surfing
- B. Location D has the strongest RF signal strength
- C. The RF signal strength at location B is 50% weaker than location A
- D. The signal strength at location B is 10 dB better than location C
- E. The RF signal strength at location C is 10 times stronger than location B

Answer: BE

NEW QUESTION 119

Which two components are supported by LISP? (Choose two.)

- A. Proxy ETR
- B. egress tunnel router
- C. route reflector
- D. HMAC algorithm
- E. spoke

Answer: AB

NEW QUESTION 122

An engineer is working with the Cisco DNA Center API. Drag and drop the methods from the left onto the actions that they are used for on the right.

GET	remove an element using the API
POST	update an element
DELETE	extract information from the API
PUT	create an element

- A. Mastered
- B. Not Mastered

Answer: A

Explanation:

	DELETE
	PUT
	GET
	POST

NEW QUESTION 126

Refer to the exhibit.

```
Tunnel100 is up, line protocol is up
Hardware is Tunnel
Internet address is 192.168.200.1/24
MTU 17912 bytes, BW 100 Kbit/sec, DLY 50000 usec,
  reliability 255/255, txload 1/255, rxload 1/255
Encapsulation TUNNEL, loopback not set
Keepalive set (10 sec), retries 3
Tunnel source 209.165.202.129 (GigabitEthernet0/1)
Tunnel Subblocks:
  src-track:
    Tunnel100 source tracking subblock associated with GigabitEthernet0/1
    Set of tunnels with source GigabitEthernet0/1, 1 members (includes iterators), on interface <OK>
Tunnel protocol/transport GRE/IP
  Key disabled, sequencing disabled
  Checksumming of packets disabled
Tunnel TTL 255, Fast tunneling enabled
Tunnel transport MTU 1476 bytes
```

A network engineer configures a GRE tunnel and enters the show Interface tunnel command. What does the output confirm about the configuration?

- A. The keepalive value is modified from the default value.
- B. Interface tracking is configured.
- C. The tunnel mode is set to the default.
- D. The physical interface MTU is 1476 bytes.

Answer: C

NEW QUESTION 129

What does Call Admission Control require the client to send in order to reserve the bandwidth?

- A. SIP flow information
- B. Wi-Fi multimedia
- C. traffic specification
- D. VoIP media session awareness

Answer: D

NEW QUESTION 130

Which two mechanisms are available to secure NTP? (Choose two.)

- A. IP prefix list-based
- B. IPsec
- C. TACACS-based authentication
- D. IP access list-based
- E. Encrypted authentication

Answer: DE

NEW QUESTION 134

What is the data policy in a Cisco SD-WAN deployment?

- A. list of ordered statements that define node configurations and authentication used within the SD-WAN overlay
- B. Set of statements that defines how data is forwarded based on IP packet information and specific VPNs
- C. detailed database mapping several kinds of addresses with their corresponding location
- D. group of services tested to guarantee devices and links liveliness within the SD-WAN overlay

Answer: B

NEW QUESTION 136

In an SD-WAN deployment, which action in the vSmart controller responsible for?

- A. handle, maintain, and gather configuration and status for nodes within the SD-WAN fabric
- B. distribute policies that govern data forwarding performed within the SD-WAN fabric
- C. gather telemetry data from vEdge routers
- D. onboard vEdge nodes into the SD-WAN fabric

Answer: B

NEW QUESTION 137

Which component of the Cisco Cyber Threat Defense solution provides user and flow context analysis?

- A. Cisco Firepower and FireSIGHT
- B. Cisco Stealth watch system
- C. Advanced Malware Protection
- D. Cisco Web Security Appliance

Answer: B

NEW QUESTION 141

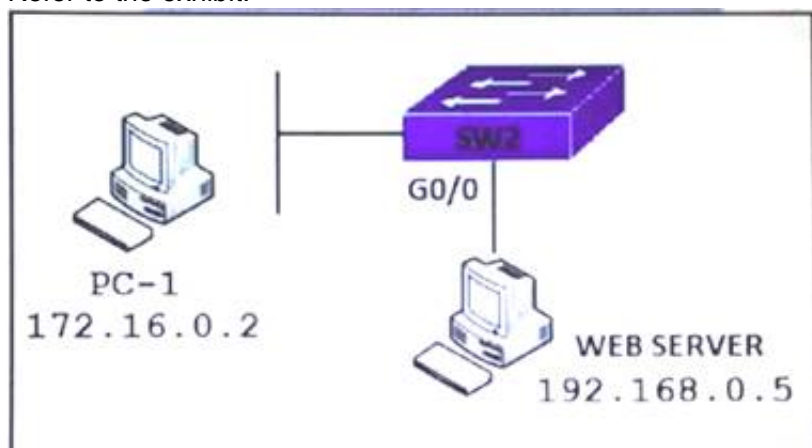
Which method should an engineer use to deal with a long-standing contention issue between any two VMs on the same host?

- A. Adjust the resource reservation limits
- B. Live migrate the VM to another host
- C. Reset the VM
- D. Reset the host

Answer: A

NEW QUESTION 143

Refer to the exhibit.



PC-1 must access the web server on port 8080. To allow this traffic, which statement must be added to an access control list that is applied on SW2 port G0/0 in the inbound direction?

- A. permit host 172.16.0.2 host 192.168.0.5 eq 8080
- B. permit host 192.168.0.5 host 172.16.0.2 eq 8080
- C. permit host 192.168.0.5 eq 8080 host 172.16.0.2
- D. permit host 192.168.0.5 it 8080 host 172.16.0.2

Answer: C

Explanation:

The inbound direction of G0/0 of SW2 only filter traffic from Web Server to PC-1 so the source IP address and port is of the Web Server.

NEW QUESTION 144

A customer has recently implemented a new wireless infrastructure using WLC-5520 at a site directly next to a large commercial airport. Users report that they intermittently lose WI-FI connectivity, and troubleshooting reveals it is due to frequent channel changes. Which two actions fix this issue? (Choose two)

- A. Remove UNII-2 and Extended UNII-2 channels from the 5 Ghz channel list
- B. Restore the DCA default settings because this automatically avoids channel interference.
- C. Configure channels on the UNII-2 and the Extended UNII-2 sub-bands of the 5 Ghz band only
- D. Enable DFS channels because they are immune to radar interference.
- E. Disable DFS channels to prevent interference with Doppler radar

Answer: AE

NEW QUESTION 148

An engineer is troubleshooting the Ap join process using DNS. Which FQDN must be resolvable on the network for the access points to successfully register to the WLC?

- A. wlcbostrname.domain.com
- B. cisco-capwap-controller.domain.com
- C. ap-manager.domain.com
- D. primary-wlc.domain.com

Answer: B

NEW QUESTION 153

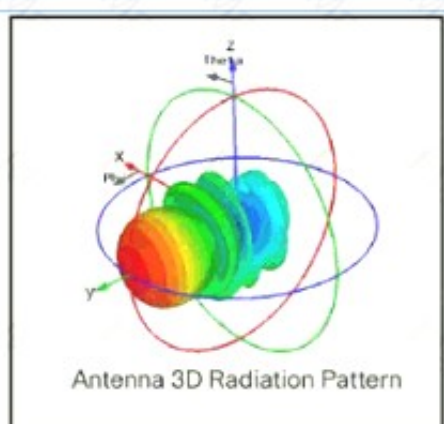
An engineer is concerned with the deployment of new application that is sensitive to inter-packet delay variance. Which command configures the router to be the destination of jitter measurements?

- A. Router(config)# ip sla responder udp-connect 172.29.139.134 5000
- B. Router(config)# ip sla responder tcp-connect 172.29.139.134 5000
- C. Router(config)# ip sla responder udp-echo 172.29.139.134 5000
- D. Router(config)# ip sla responder tcp-echo 172.29.139.134 5000

Answer: D

NEW QUESTION 158

Refer to the exhibit.



Which type of antenna does the radiation pattern represent?

- A. Yagi
- B. multidirectional
- C. directional patch
- D. omnidirectional

Answer: A

Explanation:

A Yagi antenna is formed by driving a simple antenna, typically a dipole or dipolelike antenna, and shaping the beam using a well-chosen series of non-driven elements whose length and spacing are tightly controlled.



Reference: https://www.cisco.com/c/en/us/products/collateral/wireless/aironetantennas-accessories/prod_white_paper0900aecd806a1a3e.htm

NEW QUESTION 163

What is the centralized control policy in a Cisco SD-WAN deployment?

- A. list of ordered statements that define user access policies
- B. set of statements that defines how routing is performed
- C. set of rules that governs nodes authentication within the cloud
- D. list of enabled services for all nodes within the cloud

Answer: B

NEW QUESTION 168

At which Layer does Cisco DNA Center support REST controls?

- A. EEM applets or scripts
- B. Session layer
- C. YMAL output from responses to API calls
- D. Northbound APIs

Answer: D

NEW QUESTION 173

How is Layer 3 roaming accomplished in a unified wireless deployment?

- A. An EoIP tunnel is created between the client and the anchor controller to provide seamless connectivity as the client is associated with the new AP.
- B. The client entry on the original controller is passed to the database on the new controller.
- C. The new controller assigns an IP address from the new subnet to the client
- D. The client database on the original controller is updated the anchor entry, and the new controller database is updated with the foreign entry.

Answer: A

NEW QUESTION 177

Drag and drop the wireless elements on the left to their definitions on the right.

beamwidth	a graph that shows the relative intensity of the signal strength of an antenna within its space
polarization	the relative increase in signal strength of an antenna in a given direction
radiation patterns	measures the angle of an antenna pattern in which the relative signal strength is half-power below the maximum value
gain	radiated electromagnetic waves that influence the orientation of an antenna within its electromagnetic field

- A. Mastered
 B. Not Mastered

Answer: A

Explanation:

Chart, line chart Description automatically generated

NEW QUESTION 181

How does an on-premises infrastructure compare to a cloud infrastructure?

- A. On-premises can increase compute power faster than cloud
 B. On-premises requires less power and cooling resources than cloud
 C. On-premises offers faster deployment than cloud
 D. On-premises offers lower latency for physically adjacent systems than cloud.

Answer: D

NEW QUESTION 184

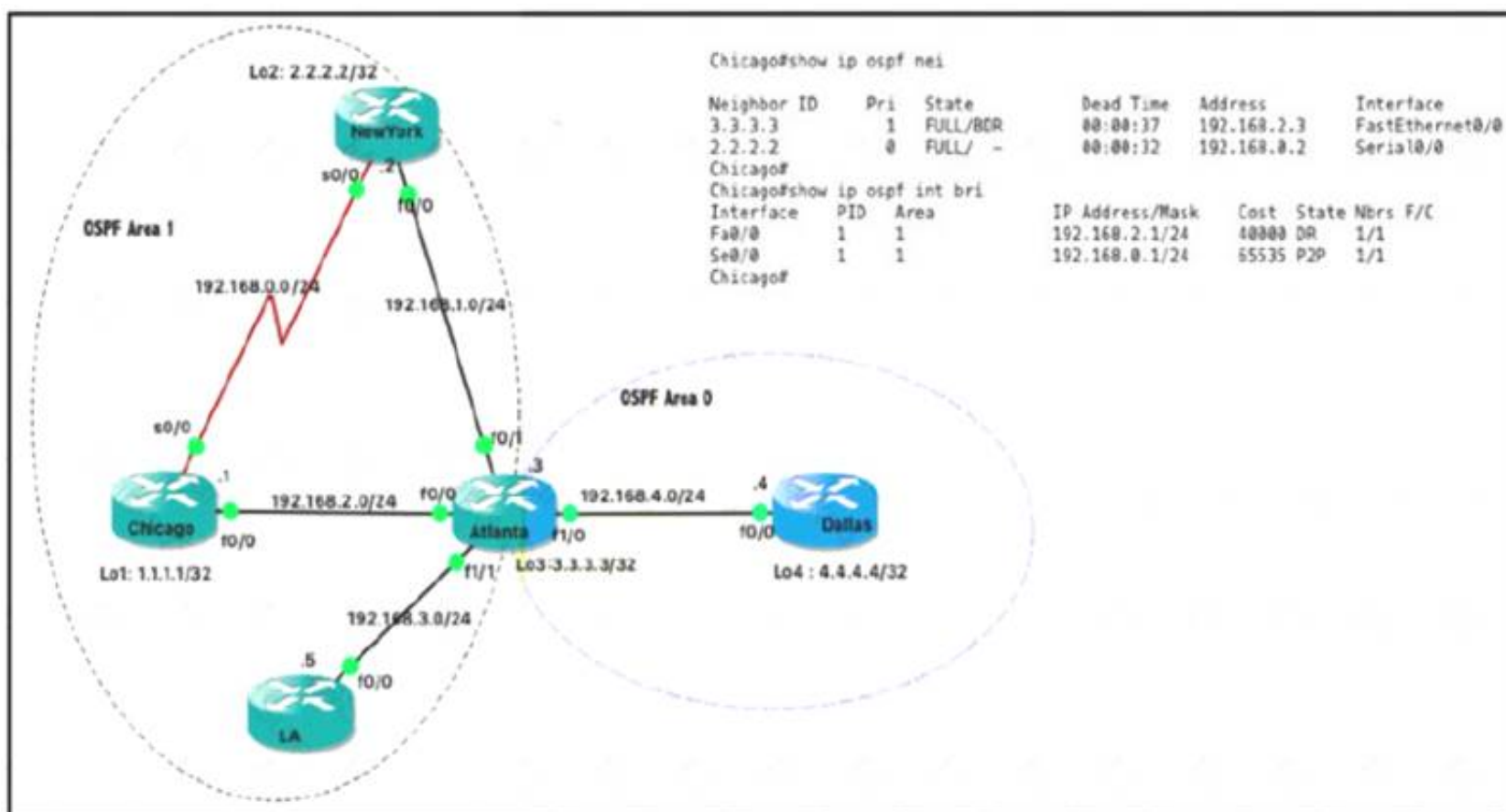
How are the different versions of IGMP compatible?

- A. IGMPv2 is compatible only with IGMPv1.
 B. IGMPv2 is compatible only with IGMPv2.
 C. IGMPv3 is compatible only with IGMPv3.
 D. IGMPv3 is compatible only with IGMPv1

Answer: A

NEW QUESTION 185

Refer the exhibit.



Which router is the designated router on the segment 192.168.0.0/24?

- A. This segment has no designated router because it is a nonbroadcast network type.
 B. This segment has no designated router because it is a p2p network type.
 C. Router Chicago because it has a lower router ID
 D. Router NewYork because it has a higher router ID

Answer: B

NEW QUESTION 186

Drag and drop the characteristics from the left onto the protocols they apply to on the right?

uses Dijkstra's Shortest Path First algorithm	OSPF
uses Diffused Update Algorithm	
uses bandwidth, delay, reliability, and load for routing metric	EIGRP
uses an election process	

- A. Mastered
- B. Not Mastered

Answer: A

Explanation:

Diagram Description automatically generated

NEW QUESTION 191

Which method of account authentication does OAuth 2.0 within REST APIs?

- A. username/role combination
- B. access tokens
- C. cookie authentication
- D. basic signature workflow

Answer: B

Explanation:

The most common implementations of OAuth (OAuth 2.0) use one or both of these tokens:
+ access token: sent like an API key, it allows the application to access a user's data; optionally, access tokens can expire.
+ refresh token: optionally part of an OAuth flow, refresh tokens retrieve a new access token if they have expired. OAuth2 combines Authentication and Authorization to allow more sophisticated scope and validity control.

NEW QUESTION 192

Which protocol is used to encrypt control plane traffic between SD-WAN controllers and SD-WAN endpoints?

- A. DTLS
- B. IPsec
- C. PGP
- D. HTTPS

Answer: A

NEW QUESTION 196

Which technology is used as the basis for the cisco sd-access data plane?

- A. IPsec
- B. LISP
- C. VXLAN
- D. 802.1Q

Answer: C

NEW QUESTION 197

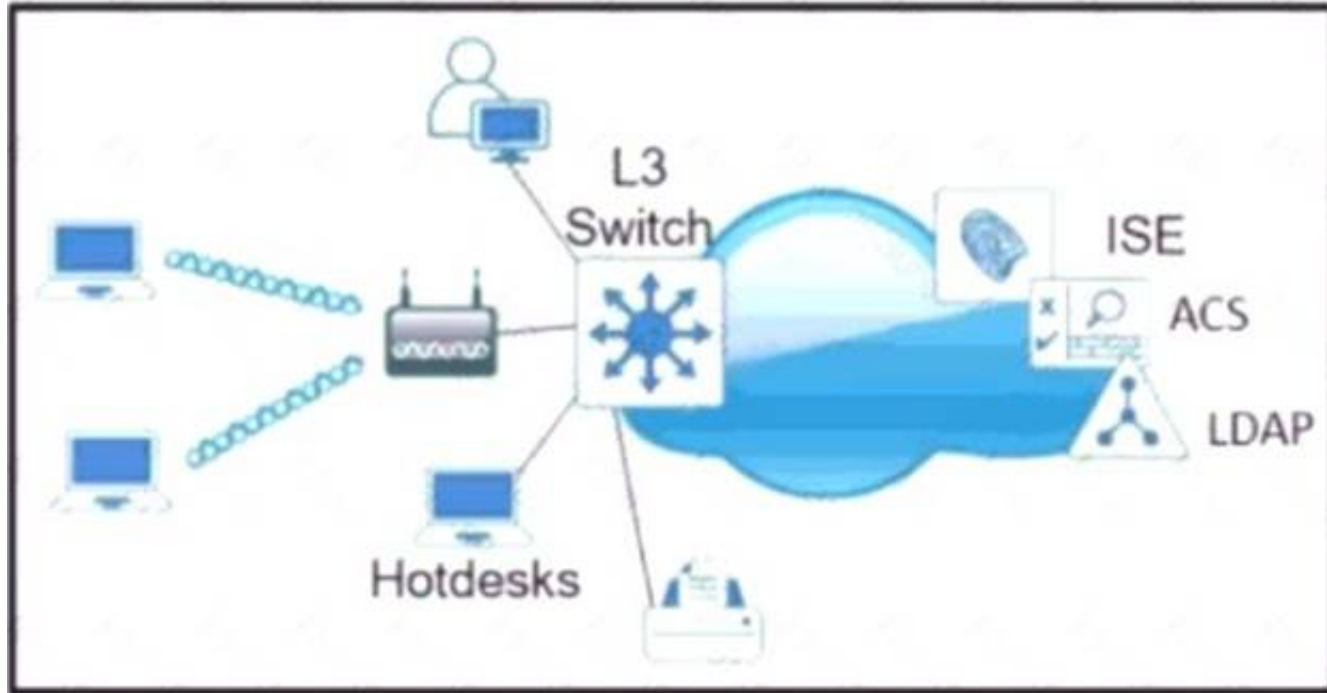
What is the function of a VTEP in VXLAN?

- A. provide the routing underlay and overlay for VXLAN headers
- B. dynamically discover the location of end hosts in a VXLAN fabric
- C. encapsulate and de-encapsulate traffic into and out of the VXLAN fabric
- D. statically point to end host locations of the VXLAN fabric

Answer: C

NEW QUESTION 200

Refer to the exhibit



Which single security feature is recommended to provide Network Access Control in the enterprise?

- A. MAB
- B. 802.1X
- C. WebAuth
- D. port security sticky MAC

Answer: B

NEW QUESTION 201

.....

Relate Links

100% Pass Your 350-401 Exam with ExamBible Prep Materials

<https://www.exambible.com/350-401-exam/>

Contact us

We are proud of our high-quality customer service, which serves you around the clock 24/7.

Viste - <https://www.exambible.com/>