



Cisco

Exam Questions 200-201

Understanding Cisco Cybersecurity Operations Fundamentals

NEW QUESTION 1

Refer to the exhibit.

```
# nmap -sV 172.18.104.139

Starting Nmap 7.01 ( https://nmap.org ) at 2020-03-07 11:36 EST
Nmap scan report for 172.18.104.139
Host is up (0.000018s latency).
Not shown: 996 closed ports
PORT      STATE SERVICE VERSION
22/tcp    open  ssh      OpenSSH 7.2p2 Ubuntu 4ubuntu2.4 (Ubuntu Linux; protocol 2.0)
25/tcp    open  smtp      Postfix smtpd
110/tcp   open  pop3      Dovecot pop3d
143/tcp   open  imap      Dovecot imapd
Service Info: Host: 172.18.108.139; OS: Linux; CPE: cpe:/o:linux:linux_kernel
```

What does the output indicate about the server with the IP address 172.18.104.139?

- A. open ports of a web server
- B. open port of an FTP server
- C. open ports of an email server
- D. running processes of the server

Answer: C

NEW QUESTION 2

What is vulnerability management?

- A. A security practice focused on clarifying and narrowing intrusion points.
- B. A security practice of performing actions rather than acknowledging the threats.
- C. A process to identify and remediate existing weaknesses.
- D. A process to recover from service interruptions and restore business-critical applications

Answer: C

NEW QUESTION 3

What is a difference between an inline and a tap mode traffic monitoring?

- A. Inline monitors traffic without examining other devices, while a tap mode tags traffic and examines the data from monitoring devices.
- B. Tap mode monitors traffic direction, while inline mode keeps packet data as it passes through the monitoring devices.
- C. Tap mode monitors packets and their content with the highest speed, while the inline mode draws a packet path for analysis.
- D. Inline mode monitors traffic path, examining any traffic at a wire speed, while a tap mode monitors traffic as it crosses the network.

Answer: D

NEW QUESTION 4

What is a difference between SIEM and SOAR?

- A. SOAR predicts and prevents security alerts, while SIEM checks attack patterns and applies the mitigation.
- B. SIEM's primary function is to collect and detect anomalies, while SOAR is more focused on security operations automation and response.
- C. SIEM predicts and prevents security alerts, while SOAR checks attack patterns and applies the mitigation.
- D. SOAR's primary function is to collect and detect anomalies, while SIEM is more focused on security operations automation and response.

Answer: B

NEW QUESTION 5

What causes events on a Windows system to show Event Code 4625 in the log messages?

- A. The system detected an XSS attack
- B. Someone is trying a brute force attack on the network
- C. Another device is gaining root access to the system
- D. A privileged user successfully logged into the system

Answer: B

NEW QUESTION 6

Which regex matches only on all lowercase letters?

- A. [az]+
- B. [^az]+
- C. az+
- D. a*z+

Answer: A

NEW QUESTION 7

An analyst received a ticket regarding a degraded processing capability for one of the HR department's servers. On the same day, an engineer noticed a disabled antivirus software and was not able to determine when or why it occurred. According to the NIST Incident Handling Guide, what is the next phase of this investigation?

- A. Recovery
- B. Detection
- C. Eradication
- D. Analysis

Answer: B

NEW QUESTION 8

An engineer must compare NIST vs ISO frameworks The engineer deeded to compare as readable documentation and also to watch a comparison video review. Using Windows 10 OS. the engineer started a browser and searched for a NIST document and then opened a new tab in the same browser and searched for an ISO document for comparison

The engineer tried to watch the video, but there 'was an audio problem with OS so the engineer had to troubleshoot it At first the engineer started CMD and looked fee a driver path then locked for a corresponding registry in the registry editor The engineer enabled "Audiosrv" in task manager and put it on auto start and the problem was solved Which two components of the OS did the engineer touch? (Choose two)

- A. permissions
- B. PowerShell logs
- C. service
- D. MBR
- E. process and thread

Answer: AC

NEW QUESTION 9

Which incidence response step includes identifying all hosts affected by an attack?

- A. detection and analysis
- B. post-incident activity
- C. preparation
- D. containment, eradication, and recovery

Answer: D

Explanation:

* 3.3.3 Identifying the Attacking Hosts During incident handling, system owners and others sometimes want to or need to identify the attacking host or hosts.

Although this information can be important, incident handlers should generally stay focused on containment, eradication, and recovery.

<https://nvlpubs.nist.gov/nistpubs/SpecialPublications/NIST.SP.800-61r2.pdf>

The response phase, or containment, of incident response, is the point at which the incident response team begins interacting with affected systems and attempts to keep further damage from occurring as a result of the incident.

NEW QUESTION 10

How does certificate authority impact a security system?

- A. It authenticates client identity when requesting SSL certificate
- B. It validates domain identity of a SSL certificate
- C. It authenticates domain identity when requesting SSL certificate
- D. It validates client identity when communicating with the server

Answer: B

NEW QUESTION 10

Refer to the exhibit.

```
$ cuckoo submit --machine cuckoo1 /path/to/binary
```

Which event is occurring?

- A. A binary named "submit" is running on VM cuckoo1.
- B. A binary is being submitted to run on VM cuckoo1
- C. A binary on VM cuckoo1 is being submitted for evaluation
- D. A URL is being evaluated to see if it has a malicious binary

Answer: B

Explanation:

<https://cuckoo.readthedocs.io/en/latest/usage/submit/>

NEW QUESTION 11

A network engineer discovers that a foreign government hacked one of the defense contractors in their home country and stole intellectual property. What is the threat agent in this situation?

- A. the intellectual property that was stolen

- B. the defense contractor who stored the intellectual property
- C. the method used to conduct the attack
- D. the foreign government that conducted the attack

Answer: D

NEW QUESTION 12

Drag and drop the type of evidence from the left onto the description of that evidence on the right.

direct evidence	log that shows a command and control check-in from verified malware
corroborative evidence	firewall log showing successful communication and threat intelligence stating an IP is known to host malware
indirect evidence	NetFlow-based spike in DNS traffic

- A. Mastered
- B. Not Mastered

Answer: A

Explanation:

Graphical user interface, application Description automatically generated

NEW QUESTION 14

An analyst is using the SIEM platform and must extract a custom property from a Cisco device and capture the phrase, "File: Clean." Which regex must the analyst import?

- A. File: Clean
- B. ^Parent File Clean\$
- C. File: Clean (.*)
- D. ^File: Clean\$

Answer: A

NEW QUESTION 18

Refer to the exhibit.

```
#Time Format: Local
#Fields: date time action protocol src-ip dst-ip src-port dst-port size tcpflags tcpsyn tcpack tcpwin icmptype icmpcode info path

2015-07-16 11:35:26 ALLOW TCP 10.40.4.182 10.40.1.11 63064 135 0 - 0 0 0 - - - SEND
2015-07-16 11:35:26 ALLOW TCP 10.40.4.182 10.40.1.14 63065 49156 0 - 0 0 0 - - - SEND
2015-07-16 11:35:26 ALLOW TCP 10.40.4.182 10.40.1.11 63066 65386 0 - 0 0 0 - - - SEND
2015-07-16 11:35:26 ALLOW TCP 10.40.4.182 10.40.1.11 63067 389 0 - 0 0 0 - - - SEND
2015-07-16 11:35:26 ALLOW UDP 10.40.4.182 10.40.1.14 62292 389 0 - - - - - - - SEND
2015-07-16 11:35:26 ALLOW TCP 10.40.4.182 10.40.1.11 63068 389 0 - 0 0 0 - - - SEND
2015-07-16 11:35:26 ALLOW TCP 10.40.4.182 10.40.1.11 63069 445 0 - 0 0 0 - - - SEND
2015-07-16 11:35:26 ALLOW UDP 10.40.4.182 10.40.1.13 62293 389 0 - - - - - - - SEND
2015-07-16 11:35:26 ALLOW TCP 10.40.4.182 10.40.1.13 63070 88 0 - 0 0 0 - - - SEND
2015-07-16 11:35:26 ALLOW TCP 10.40.4.182 10.40.1.11 63071 445 0 - 0 0 0 - - - SEND
2015-07-16 11:35:26 ALLOW TCP 10.40.4.182 10.40.1.11 63072 445 0 - 0 0 0 - - - SEND
2015-07-16 11:35:26 ALLOW TCP 10.40.4.182 10.40.1.11 63073 445 0 - 0 0 0 - - - SEND
2015-07-16 11:35:26 ALLOW TCP 10.40.4.182 10.40.1.13 63074 88 0 - 0 0 0 - - - SEND
2015-07-16 11:35:26 ALLOW TCP 10.40.4.182 10.40.1.13 63075 88 0 - 0 0 0 - - - SEND
2015-07-16 11:35:26 ALLOW TCP 10.40.4.182 10.40.1.13 63076 88 0 - 0 0 0 - - - SEND
2015-07-16 11:35:27 ALLOW UDP 10.40.4.182 10.40.1.11 55053 53 0 - - - - - - - SEND
2015-07-16 11:35:27 ALLOW UDP 10.40.4.182 10.40.1.11 50845 53 0 - - - - - - - SEND
2015-07-16 11:35:30 ALLOW UDP fe80::29ea:1a3c:24d6:fb49 ff02::1:3 57333 5355 0 - - - - - - - RECEIVE
2015-07-16 11:35:30 ALLOW UDP 10.40.4.252 224.0.0.252 59629 5355 0 - - - - - - - RECEIVE
2015-07-16 11:35:30 ALLOW UDP fe80::4c2e:505d:b3a7:caaf ff02::1:3 58846 5355 0 - - - - - - - SEND
2015-07-16 11:35:30 ALLOW UDP 10.40.4.182 224.0.0.252 58846 5355 0 - - - - - - - SEND
2015-07-16 11:35:31 ALLOW UDP 10.40.4.182 224.0.0.252 137 137 0 - - - - - - - SEND
2015-07-16 11:35:31 ALLOW UDP fe80::4c2e:505d:b3a7:caaf ff02::1:3 63504 5355 0 - - - - - - - SEND
2015-07-16 11:35:31 ALLOW UDP 10.40.4.182 224.0.0.252 63504 5355 0 - - - - - - - SEND
```

An engineer received an event log file to review. Which technology generated the log?

- A. NetFlow
- B. proxy
- C. firewall
- D. IDS/IPS

Answer: C

NEW QUESTION 23

What should a security analyst consider when comparing inline traffic interrogation with traffic tapping to determine which approach to use in the network?

- A. Tapping interrogation replicates signals to a separate port for analyzing traffic
- B. Tapping interrogations detect and block malicious traffic
- C. Inline interrogation enables viewing a copy of traffic to ensure traffic is in compliance with security policies
- D. Inline interrogation detects malicious traffic but does not block the traffic

Answer: A

Explanation:

A network TAP is a simple device that connects directly to the cabling infrastructure to split or copy packets for use in analysis, security, or general network management

NEW QUESTION 26

An engineer needs to configure network systems to detect command and control communications by decrypting ingress and egress perimeter traffic and allowing network security devices to detect malicious outbound communications. Which technology should be used to accomplish the task?

- A. digital certificates
- B. static IP addresses
- C. signatures
- D. cipher suite

Answer: A

NEW QUESTION 28

An organization's security team has detected network spikes coming from the internal network. An investigation has concluded that the spike in traffic was from intensive network scanning. How should the analyst collect the traffic to isolate the suspicious host?

- A. by most active source IP
- B. by most used ports
- C. based on the protocols used
- D. based on the most used applications

Answer: A

NEW QUESTION 30

When an event is investigated, which type of data provides the investigate capability to determine if data exfiltration has occurred?

- A. full packet capture
- B. NetFlow data
- C. session data
- D. firewall logs

Answer: A

NEW QUESTION 33

An automotive company provides new types of engines and special brakes for rally sports cars. The company has a database of inventions and patents for their engines and technical information. Customers can access the database through the company's website after they register and identify themselves. Which type of protected data is accessed by customers?

- A. IP data
- B. PII data
- C. PSI data
- D. PHI data

Answer: B

NEW QUESTION 37

A security engineer has a video of a suspect entering a data center that was captured on the same day that files in the same data center were transferred to a competitor.

Which type of evidence is this?

- A. best evidence
- B. prima facie evidence
- C. indirect evidence
- D. physical evidence

Answer: C

Explanation:

There are three general types of evidence:

--> Best evidence: can be presented in court in the original form (for example, an exact copy of a hard disk drive).

--> Corroborating evidence: tends to support a theory or an assumption deduced by some initial evidence. This corroborating evidence confirms the proposition.

--> Indirect or circumstantial evidence: extrapolation to a conclusion of fact (such as fingerprints, DNA evidence, and so on).

NEW QUESTION 41

Which signature impacts network traffic by causing legitimate traffic to be blocked?

- A. false negative
- B. true positive
- C. true negative
- D. false positive

Answer: D

NEW QUESTION 43

Which action should be taken if the system is overwhelmed with alerts when false positives and false negatives are compared?

- A. Modify the settings of the intrusion detection system.
- B. Design criteria for reviewing alerts.
- C. Redefine signature rules.
- D. Adjust the alerts schedule.

Answer: A

Explanation:

Traditional intrusion detection system (IDS) and intrusion prevention system (IPS) devices need to be tuned to avoid false positives and false negatives. Next-generation IPSs do not need the same level of tuning compared to traditional IPSs. Also, you can obtain much deeper reports and functionality, including advanced malware protection and retrospective analysis to see what happened after an attack took place. Ref: Cisco CyberOps Associate CBROPS 200-201 Official Cert Guide

NEW QUESTION 48

Refer to the exhibit.

No.	Time	Source	Destination	Protocol	Length	Info
27336	245.7615440	192.168.154.129	192.168.154.131	FTP	79	Request: USER bjones
27337	245.7615820	192.168.154.129	192.168.154.131	FTP	79	Request: USER bjones
27338	245.7616210	192.168.154.129	192.168.154.131	FTP	79	Request: USER bjones
27340	245.7616680	192.168.154.129	192.168.154.131	FTP	80	Request: PASS blinkley
27343	245.7617170	192.168.154.129	192.168.154.131	FTP	84	Request: PASS bloomcounty
27344	245.7617400	192.168.154.131	192.168.154.129	FTP	100	Response: 331 Please specify the password.
27345	245.7617580	192.168.154.129	192.168.154.131	FTP	78	Request: PASS brown
27346	245.7617890	192.168.154.131	192.168.154.129	FTP	100	Response: 331 Please specify the password.
27347	245.7618140	192.168.154.129	192.168.154.131	FTP	78	Request: PASS bloom
27348	245.7618360	192.168.154.131	192.168.154.129	FTP	100	Response: 331 Please specify the password.
27349	245.7618550	192.168.154.129	192.168.154.131	FTP	80	Request: PASS blonde
27350	245.7618920	192.168.154.129	192.168.154.131	FTP	77	Request: PASS capp
27351	245.7653470	192.168.154.129	192.168.154.131	FTP	79	Request: PASS caucas
27352	245.7692450	192.168.154.129	192.168.154.131	FTP	80	Request: PASS cerebus
27353	245.7693080	192.168.154.129	192.168.154.131	FTP	81	Request: PASS catwoman
27355	245.7771480	192.168.154.131	192.168.154.129	FTP	88	Response: 530 Login incorrect.
27356	245.7772000	192.168.154.131	192.168.154.129	FTP	88	Response: 530 Login incorrect.

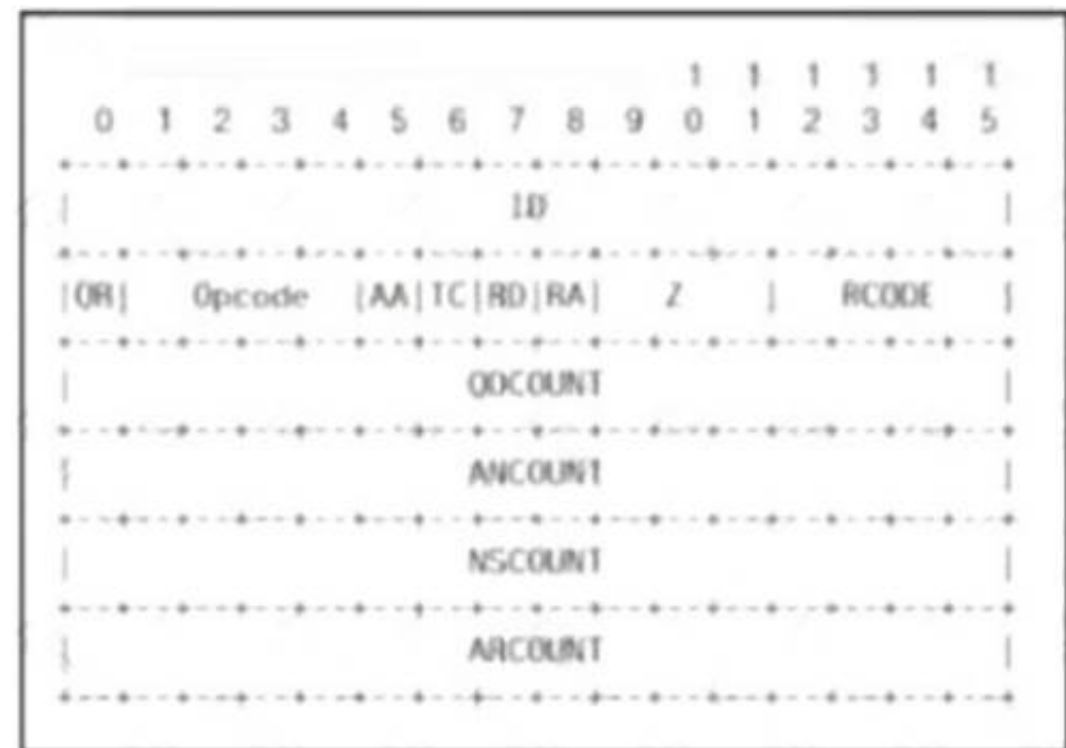
An analyst was given a PCAP file, which is associated with a recent intrusion event in the company FTP server Which display filters should the analyst use to filter the FTP traffic?

- A. dstport == FTP
- B. tcp.port==21
- C. tcpport = FTP
- D. dstport = 21

Answer: B

NEW QUESTION 51

Refer to the exhibit.



Which field contains DNS header information if the payload is a query or a response?

- A. Z
- B. ID
- C. TC
- D. QR

Answer: B

NEW QUESTION 52

An investigator is examining a copy of an ISO file that is stored in CDFS format. What type of evidence is this file?

- A. data from a CD copied using Mac-based system
- B. data from a CD copied using Linux system
- C. data from a DVD copied using Windows system
- D. data from a CD copied using Windows

Answer: B

Explanation:

CDfs is a virtual file system for Unix-like operating systems; it provides access to data and audio tracks on Compact Discs. When the CDfs driver mounts a Compact Disc, it represents each track as a file. This is consistent with the Unix convention "everything is a file". Source: <https://en.wikipedia.org/wiki/CDfs>

NEW QUESTION 57

What is the difference between mandatory access control (MAC) and discretionary access control (DAC)?

- A. MAC is controlled by the discretion of the owner and DAC is controlled by an administrator
- B. MAC is the strictest of all levels of control and DAC is object-based access
- C. DAC is controlled by the operating system and MAC is controlled by an administrator
- D. DAC is the strictest of all levels of control and MAC is object-based access

Answer: B

NEW QUESTION 58

A user received a targeted spear-phishing email and identified it as suspicious before opening the content. To which category of the Cyber Kill Chain model does to this type of event belong?

- A. weaponization
- B. delivery
- C. exploitation
- D. reconnaissance

Answer: B

NEW QUESTION 59

A company encountered a breach on its web servers using IIS 7.5. During the investigation, an engineer discovered that an attacker read and altered the data on a secure communication using TLS 1.2 and intercepted sensitive information by downgrading a connection to export-grade cryptography. The engineer must mitigate similar incidents in the future and ensure that clients and servers always negotiate with the most secure protocol versions and cryptographic parameters. Which action does the engineer recommend?

- A. Upgrade to TLS v1.3.
- B. Install the latest IIS version.
- C. Downgrade to TLS 1.1.
- D. Deploy an intrusion detection system

Answer: B

NEW QUESTION 61

Which event is user interaction?

- A. gaining root access
- B. executing remote code
- C. reading and writing file permission
- D. opening a malicious file

Answer: D

NEW QUESTION 62

Which type of verification consists of using tools to compute the message digest of the original and copied data, then comparing the similarity of the digests?

- A. evidence collection order
- B. data integrity
- C. data preservation
- D. volatile data collection

Answer: B

NEW QUESTION 67

An engineer needs to fetch logs from a proxy server and generate actual events according to the data received. Which technology should the engineer use to accomplish this task?

- A. Firepower
- B. Email Security Appliance
- C. Web Security Appliance
- D. Stealthwatch

Answer: C

NEW QUESTION 70

Which type of data consists of connection level, application-specific records generated from network traffic?

- A. transaction data
- B. location data
- C. statistical data
- D. alert data

Answer: A

NEW QUESTION 71

According to the September 2020 threat intelligence feeds a new malware called Egregor was introduced and used in many attacks. Distribution of Egregor is primarily through a Cobalt Strike that has been installed on victim's workstations using RDP exploits. Malware exfiltrates the victim's data to a command and control server. The data is used to force victims pay or lose it by publicly releasing it. Which type of attack is described?

- A. malware attack
- B. ransomware attack
- C. whale-phishing
- D. insider threat

Answer: B

NEW QUESTION 72

Which step in the incident response process researches an attacking host through logs in a SIEM?

- A. detection and analysis
- B. preparation
- C. eradication
- D. containment

Answer: A

Explanation:

Preparation --> Detection and Analysis --> Containment, Eradication and Recovery --> Post-Incident Activity Detection and Analysis --> Profile networks and systems, Understand normal behaviors, Create a log retention policy, Perform event correlation. Maintain and use a knowledge base of information. Use Internet search engines for research. Run packet sniffers to collect additional data. Filter the data. Seek assistance from others. Keep all host clocks synchronized. Know the different types of attacks and attack vectors. Develop processes and procedures to recognize the signs of an incident. Understand the sources of precursors and indicators. Create appropriate incident documentation capabilities and processes. Create processes to effectively prioritize security incidents. Create processes to effectively communicate incident information (internal and external communications).

Ref: Cisco CyberOps Associate CBROPS 200-201 Official Cert Guide

NEW QUESTION 76

What is rule-based detection when compared to statistical detection?

- A. proof of a user's identity
- B. proof of a user's action
- C. likelihood of user's action
- D. falsification of a user's identity

Answer: B

NEW QUESTION 77

What describes the defense-in-depth principle?

- A. defining precise guidelines for new workstation installations
- B. categorizing critical assets within the organization
- C. isolating guest Wi-Fi from the focal network
- D. implementing alerts for unexpected asset malfunctions

Answer: B

NEW QUESTION 80

An engineer runs a suspicious file in a sandbox analysis tool to see the outcome. The analysis report shows that outbound callouts were made post infection. Which two pieces of information from the analysis report are needed to investigate the callouts? (Choose two.)

- A. signatures
- B. host IP addresses
- C. file size
- D. dropped files
- E. domain names

Answer: BE

NEW QUESTION 81

An engineer is working with the compliance teams to identify the data passing through the network. During analysis, the engineer informs the compliance team that external penmeter data flows contain records, writings, and artwork Internal segregated network flows contain the customer choices by gender, addresses, and product preferences by age. The engineer must identify protected data. Which two types of data must be identified'? (Choose two.)

- A. SOX
- B. PII
- C. PHI
- D. PCI
- E. copyright

Answer: BC

NEW QUESTION 83

Refer to the exhibit.

```
- Internet Protocol version 4, Src: 192.168.122.100 (192.168.122.100), Dst:
81.179.179.69 (81.179.179.69)
  Version: 4
  Header Length: 20 bytes
+ Differentiated Services Field: 0x00 (DSCP 0x00: Default; ECN: 0x00: Not-ECT
(Not ECN-Capable Transport))
  Total Length: 538
  Identification: 0x6bse (27534)
+ Flags: 0x02 (Don't Fragment)
  Fragment offset: 0
  Time to live: 128
  Protocol: TCP (6)
+ Header checksum: 0x000 [Validation disabled]
  Source: 192.168.122.100 (192.168.122.100)
  Destination: 81.179.179.69 (81.179.179.69)
  [Source GeoIP: Unknown]

+ Transmission control protocol. src port: 50272 (50272) Dst Port: 80 (80).
Seq: 419451624. Ack: 970444123. Len: 490
```

What should be interpreted from this packet capture?

- A. 81.179.179.69 is sending a packet from port 80 to port 50272 of IP address 192.168.122.100 using UDP protocol.
- B. 192.168.122.100 is sending a packet from port 50272 to port 80 of IP address 81.179.179.69 using TCP protocol.
- C. 192.168.122.100 is sending a packet from port 80 to port 50272 of IP address 81.179.179.69 using UDP protocol.
- D. 81.179.179.69 is sending a packet from port 50272 to port 80 of IP address 192.168.122.100 using TCP UDP protocol.

Answer: B

NEW QUESTION 85

An analyst received an alert on their desktop computer showing that an attack was successful on the host. After investigating, the analyst discovered that no mitigation action occurred during the attack. What is the reason for this discrepancy?

- A. The computer has a HIPS installed on it.
- B. The computer has a NIPS installed on it.
- C. The computer has a HIDS installed on it.
- D. The computer has a NIDS installed on it.

Answer: C

NEW QUESTION 87

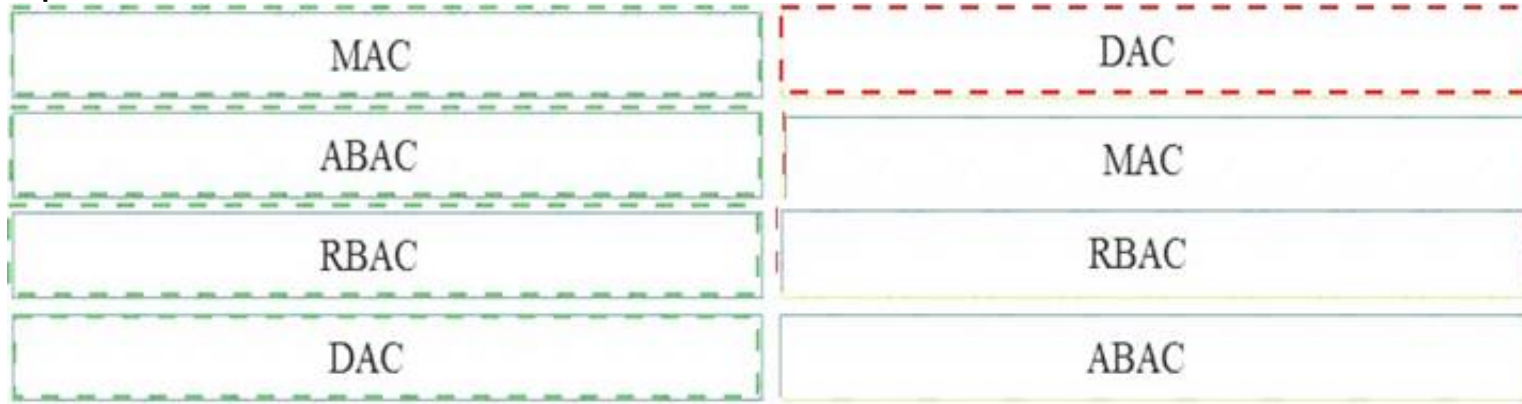
Drag and drop the access control models from the left onto the correct descriptions on the right.

MAC	object owner determines permissions
ABAC	OS determines permissions
RBAC	role of the subject determines permissions
DAC	attributes of the subject determines permissions

- A. Mastered
- B. Not Mastered

Answer: A

Explanation:



NEW QUESTION 92

An analyst is investigating an incident in a SOC environment. Which method is used to identify a session from a group of logs?

- A. sequence numbers
- B. IP identifier
- C. 5-tuple
- D. timestamps

Answer: C

NEW QUESTION 96

What is personally identifiable information that must be safeguarded from unauthorized access?

- A. date of birth
- B. driver's license number
- C. gender
- D. zip code

Answer: B

Explanation:

According to the Executive Office of the President, Office of Management and Budget (OMB), and the U.S. Department of Commerce, Office of the Chief Information Officer, PII refers to "information which can be used to distinguish or trace an individual's identity."

The following are a few examples:

- An individual's name
- Social security number
- Biological or personal characteristics, such as an image of distinguishing features, fingerprints, Xrays, voice signature, retina scan, and the geometry of the face
- Date and place of birth
- Mother's maiden name
- Credit card numbers
- Bank account numbers
- Driver license number
- Address information, such as email addresses or street addresses, and telephone numbers for businesses or personal use
- Cisco CyberOps Associate CBROPS 200-201 Official Cert Guide Omar Santos

NEW QUESTION 98

Refer to the exhibit.

Interface: 192.168.1.29 --- 0x11		
Internet Address	Physical Address	Type
192.168.1.10	d8-a7-56-d7-19-ea	dynamic
192.168.1.67	d8-a7-56-d7-19-ea	dynamic
192.168.1.1	01-00-5e-00-00-16	static

What is occurring in this network?

- A. ARP cache poisoning
- B. DNS cache poisoning
- C. MAC address table overflow
- D. MAC flooding attack

Answer: A

NEW QUESTION 103

At which layer is deep packet inspection investigated on a firewall?

- A. internet
- B. transport
- C. application

D. data link

Answer: C

Explanation:

Deep packet inspection is a form of packet filtering usually carried out as a function of your firewall. It is applied at the Open Systems Interconnection's application layer. Deep packet inspection evaluates the contents of a packet that is going through a checkpoint.

NEW QUESTION 104

Which NIST IR category stakeholder is responsible for coordinating incident response among various business units, minimizing damage, and reporting to regulatory agencies?

- A. CSIRT
- B. PSIRT
- C. public affairs
- D. management

Answer: D

NEW QUESTION 106

What are two categories of DDoS attacks? (Choose two.)

- A. split brain
- B. scanning
- C. phishing
- D. reflected
- E. direct

Answer: DE

NEW QUESTION 110

Which two elements of the incident response process are stated in NIST SP 800-61 r2? (Choose two.)

- A. detection and analysis
- B. post-incident activity
- C. vulnerability scoring
- D. vulnerability management
- E. risk assessment

Answer: AB

NEW QUESTION 114

Which system monitors local system operation and local network access for violations of a security policy?

- A. host-based intrusion detection
- B. systems-based sandboxing
- C. host-based firewall
- D. antivirus

Answer: A

Explanation:

HIDS is capable of monitoring the internals of a computing system as well as the network packets on its network interfaces. Host-based firewall is a piece of software running on a single Host that can restrict incoming and outgoing Network activity for that host only.

NEW QUESTION 115

What is threat hunting?

- A. Managing a vulnerability assessment report to mitigate potential threats.
- B. Focusing on proactively detecting possible signs of intrusion and compromise.
- C. Pursuing competitors and adversaries to infiltrate their system to acquire intelligence data.
- D. Attempting to deliberately disrupt servers by altering their availability

Answer: B

NEW QUESTION 117

Refer to the exhibit.

```
SELECT * FROM people WHERE username = " OR '1'='1';
```

Which type of attack is being executed?

- A. SQL injection
- B. cross-site scripting
- C. cross-site request forgery

D. command injection

Answer: A

NEW QUESTION 118

Refer to the exhibit.

```
192.168.10.10 -- [01/Dec/2020:11:12:22 -0200] "GET /icons/powered_by_rh.png HTTP/1.1" 200 1213 "http://192.168.0.102/" "Mozilla/5.0 (X11; U; Linux x86_64; en-US; rv:1.9.0.12) Gecko/2009070812 Ubuntu/8.04 (hardy) Firefox/3.0.12"
192.168.10.10 -- [01/Dec/2020:11:13:15 -0200] "GET /favicon.ico HTTP/1.1" 404 288 "-" "Mozilla/5.0 (X11; U; Linux x86_64; en-US; rv:1.9.0.12) Gecko/2009070812 Ubuntu/8.04 (hardy) Firefox/3.0.12"
192.168.10.10 -- [01/Dec/2020:11:14:22 -0200] "GET /%27%27;!--%22%3CXSS%3E=&{} HTTP/1.1" 404 310 "-" "Mozilla/5.0 (X11; U; Linux x86_64; en-US; rv:1.9.0.12) Gecko/2009070812 Ubuntu/8.04 (hardy) Firefox/3.0.12"
```

What is occurring within the exhibit?

- A. regular GET requests
- B. XML External Entities attack
- C. insecure deserialization
- D. cross-site scripting attack

Answer: A

NEW QUESTION 122

Refer to the exhibit.

Top 10 Src IP Addr ordered by flows:								
Date first seen	Duration	Src IP Addr	Flows	Packets	Bytes	pps	bps	bpp
2019-11-30 06:45:50.990	1147.332	192.168.12.234	109183	202523	13.1 M	176	96116	68
2019-11-30 06:45:02.928	1192.834	10.10.151.203	62794	219715	25.9 M	184	182294	123
2019-11-30 06:59:24.563	330.110	192.168.28.173	27864	47943	2.2 M	145	55769	48

What information is depicted?

- A. IIS data
- B. NetFlow data
- C. network discovery event
- D. IPS event data

Answer: B

NEW QUESTION 124

Drag and drop the definition from the left onto the phase on the right to classify intrusion events according to the Cyber Kill Chain model.

The threat actor takes actions to violate data integrity and availability.	Exploitation
The targeted environment is taken advantage of triggering the threat actor's code.	Installation
Backdoor is placed on the victim system allowing the threat actor to maintain the persistence.	Command and Control
An outbound connection is established to an Internet-based controller server.	Actions and Objectives

- A. Mastered
- B. Not Mastered

Answer: A

Explanation:

Exploitation - The targeted Environment is taken advantage of triggering the threat actor's code
 Installation - Backdoor is placed on the victim system allowing the threat actor to maintain the persistence.
 Command and Control - An outbound connection is established to an Internet-based controller server.
 Actions and Objectives - The threat actor takes actions to violate data integrity and availability

NEW QUESTION 128

Refer to the exhibit.

```
GET /item.php?id=34' or sleep(10)
```

This request was sent to a web application server driven by a database. Which type of web server attack is represented?

- A. parameter manipulation
- B. heap memory corruption
- C. command injection
- D. blind SQL injection

Answer: D

NEW QUESTION 133

What is the difference between inline traffic interrogation (TAPS) and traffic mirroring (SPAN)?

- A. TAPS interrogation is more complex because traffic mirroring applies additional tags to data and SPAN does not alter integrity and provides full duplex network.
- B. SPAN results in more efficient traffic analysis, and TAPS is considerably slower due to latency caused by mirroring.
- C. TAPS replicates the traffic to preserve integrity, and SPAN modifies packets before sending them to other analysis tools
- D. SPAN ports filter out physical layer errors, making some types of analyses more difficult, and TAPS receives all packets, including physical errors.

Answer: D

NEW QUESTION 134

An employee reports that someone has logged into their system and made unapproved changes, files are out of order, and several documents have been placed in the recycle bin. The security specialist reviewed the system logs, found nothing suspicious, and was not able to determine what occurred. The software is up to date; there are no alerts from antivirus and no failed login attempts. What is causing the lack of data visibility needed to detect the attack?

- A. The threat actor used a dictionary-based password attack to obtain credentials.
- B. The threat actor gained access to the system by known credentials.
- C. The threat actor used the teardrop technique to confuse and crash login services.
- D. The threat actor used an unknown vulnerability of the operating system that went undetected.

Answer: C

NEW QUESTION 135

Why is encryption challenging to security monitoring?

- A. Encryption analysis is used by attackers to monitor VPN tunnels.
- B. Encryption is used by threat actors as a method of evasion and obfuscation.
- C. Encryption introduces additional processing requirements by the CPU.
- D. Encryption introduces larger packet sizes to analyze and store.

Answer: B

NEW QUESTION 139

Refer to the exhibit.

No.	Time	Source	Destination	Protocol	Length	Info
1878	6.473353	173.37.145.84	10.0.2.15	TCP	62	80->49522 [ACK] Seq=14404 Ack=2987 Win=65535 Len=0
1986	6.736855	173.37.145.84	10.0.2.15	HTTP	245	HTTP/1.1 304 Not Modified
1987	6.736873	10.0.2.15	173.37.145.84	TCP	56	49522->80 [ACK] Seq=2987 Ack=14593 Win=59640 Len=0
2317	7.245088	10.0.2.15	173.37.145.84	TCP	2976	[TCP segment of a reassembled PDU]
2318	7.245192	10.0.2.15	173.37.145.84	HTTP	1020	GET /web/fw/i/ntpametag.gif?js=1&ts=147629607552.286&tc
2321	7.246633	173.37.145.84	10.0.2.15	TCP	62	80->49522 [ACK] Seq=14593 Ack=4447 Win=65535 Len=0
2322	7.246640	173.37.145.84	10.0.2.15	TCP	62	80->49522 [ACK] Seq=14593 Ack=5907 Win=65535 Len=0
2323	7.246642	173.37.145.84	10.0.2.15	TCP	62	80->49522 [ACK] Seq=14593 Ack=6871 Win=65535 Len=0
2542	7.512750	173.37.145.84	10.0.2.15	HTTP	442	HTTP/1.1 200 OK (GIF89a)
2543	7.512781	10.0.2.15	173.37.145.84	TCP	56	49522->80 [ACK] Seq=6871 Ack=14979 Win=62480 Len=0

Which packet contains a file that is extractable within Wireshark?

- A. 2317
- B. 1986
- C. 2318
- D. 2542

Answer: D

NEW QUESTION 143

Which open-sourced packet capture tool uses Linux and Mac OS X operating systems?

- A. NetScout
- B. tcpdump
- C. SolarWinds
- D. netsh

Answer: B

NEW QUESTION 145

What are two social engineering techniques? (Choose two.)

- A. privilege escalation
- B. DDoS attack
- C. phishing
- D. man-in-the-middle
- E. pharming

Answer: CE

NEW QUESTION 148

An intruder attempted malicious activity and exchanged emails with a user and received corporate information, including email distribution lists. The intruder asked the user to engage with a link in an email. When the link launched, it infected machines and the intruder was able to access the corporate network. Which testing method did the intruder use?

- A. social engineering
- B. eavesdropping
- C. piggybacking
- D. tailgating

Answer: A

NEW QUESTION 152

Which attack is the network vulnerable to when a stream cipher like RC4 is used twice with the same key?

- A. forgery attack
- B. plaintext-only attack
- C. ciphertext-only attack
- D. meet-in-the-middle attack

Answer: C

NEW QUESTION 157

An engineer needs to discover alive hosts within the 192.168.1.0/24 range without triggering intrusive portscan alerts on the IDS device using Nmap. Which command will accomplish this goal?

- A. nmap --top-ports 192.168.1.0/24
- B. nmap -sP 192.168.1.0/24
- C. nmap -sL 192.168.1.0/24
- D. nmap -sV 192.168.1.0/24

Answer: B

Explanation:

<https://explainshell.com/explain?cmd=nmap+-sP>

NEW QUESTION 160

Which data format is the most efficient to build a baseline of traffic seen over an extended period of time?

- A. syslog messages
- B. full packet capture
- C. NetFlow
- D. firewall event logs

Answer: C

NEW QUESTION 165

The SOC team has confirmed a potential indicator of compromise on an endpoint. The team has narrowed the executable file's type to a new trojan family. According to the NIST Computer Security Incident Handling Guide, what is the next step in handling this event?

- A. Isolate the infected endpoint from the network.
- B. Perform forensics analysis on the infected endpoint.
- C. Collect public information on the malware behavior.
- D. Prioritize incident handling based on the impact.

Answer: C

NEW QUESTION 166

Refer to the exhibit.

```
10.44.101.23 - - [20/Nov/2017:14:18:06 -0500] "GET / HTTP/1.1"
200 1254 "-" "Mozilla/5.0(X11; Ubuntu; Linux x86_64; rv:54.0)
Gecko/20100101 Firefox/54.0"
```

What does the message indicate?

- A. an access attempt was made from the Mosaic web browser

- B. a successful access attempt was made to retrieve the password file
- C. a successful access attempt was made to retrieve the root of the website
- D. a denied access attempt was made to retrieve the password file

Answer: C

NEW QUESTION 167

Refer to the exhibit.

Date	Flow Start	Duration	Proto	Src IP Addr:Port	Dst IP Addr:Port	Packets	Bytes	Flows
2020-01-05	21:15:28.389	0.000	UDP	127.0.0.1:25678	→ 192.168.0.1:20521	1	82	1

Which type of log is displayed?

- A. proxy
- B. NetFlow
- C. IDS
- D. sys

Answer: B

NEW QUESTION 168

Refer to the exhibit.

```
Mar 6 10:35:34 user sshd[12900]: pam_unix(sshd:auth):authentication failure;
logname= uid=0 euid=0 tty=ssh ruser= rhost=127.0.0.1
Mar 6 10:35:36 user sshd[12900]: Failed password for invalid user not_bill from
127.0.0.1 port 38346 ssh2
```

In which Linux log file is this output found?

- A. /var/log/authorization.log
- B. /var/log/dmesg
- C. var/log/var.log
- D. /var/log/auth.log

Answer: D

NEW QUESTION 170

What is obtained using NetFlow?

- A. session data
- B. application logs
- C. network downtime report
- D. full packet capture

Answer: A

NEW QUESTION 172

What is the difference between a threat and a risk?

- A. Threat represents a potential danger that could take advantage of a weakness in a system
- B. Risk represents the known and identified loss or danger in the system
- C. Risk represents the nonintentional interaction with uncertainty in the system
- D. Threat represents a state of being exposed to an attack or a compromise, either physically or logically.

Answer: A

Explanation:

A threat is any potential danger to an asset. If a vulnerability exists but has not yet been exploited—or, more importantly, it is not yet publicly known—the threat is latent and not yet realized.

NEW QUESTION 174

Refer to the exhibit.

No.	Time	Source	Destination	Protocol	Length	Info
18	0.011918	10.0.2.15	192.124.249.9	TCP	78	50588→443 [SYN] Seq=1
19	0.022656	192.124.249.9	10.0.2.15	TCP	62	443→50588 [SYN, ACK]
20	0.022702	10.0.2.15	192.124.249.9	TCP	56	50588→443 [ACK] Seq=1
21	0.022988	192.124.249.9	10.0.2.15	TCP	62	443→50586 [SYN, ACK]
22	0.022996	10.0.2.15	192.124.249.9	TCP	56	50586→443 [ACK] Seq=1
23	0.023212	10.0.2.15	192.124.249.9	TCP	261	50588→443 [PSH, ACK]
24	0.023373	10.0.2.15	192.124.249.9	TCP	261	50586→443 [PSH, ACK]
25	0.023445	192.124.249.9	10.0.2.15	TCP	62	443→50588 [ACK] Seq=1
26	0.023617	192.124.249.9	10.0.2.15	TCP	62	443→50586 [ACK] Seq=1
27	0.037413	192.124.249.9	10.0.2.15	TCP	2792	443→50586 [PSH, ACK]
28	0.037426	10.0.2.15	192.124.249.9	TCP	56	50586→443 [ACK] Seq=2

> Frame 24: 261 bytes on wire (2088 bits), 261 bytes captured (2088 bits)
 > Linux cooked capture
 > Internet Protocol Version 4, Src: 10.0.2.15 (10.0.2.15), Dst: 192.124.249.9 (192.124.249.9)
 > Transmission Control Protocol, Src Port: 50586 (50586), Dst Port: 443 (443), Seq: 1, A
 > Data [205 bytes]
 Data: 16030100c8010000c403030e06ead078d17676c13ab46ebf...
 [Length: 205]

```

0000  00 04 00 01 00 06 08 00 27 7a 3c 93 00 00 08 00  .... *z<.....
0010  45 00 00 f5 48 7b 40 00 40 06 2b f3 0a 00 02 0f  E...H{@. @.+.....
0020  c0 7c f9 09 c5 9a 01 bb 0e 1f dc b4 00 b4 aa 02  .|.....
0030  50 18 72 10 c6 7c 00 00 16 03 01 00 c8 01 00 00  P.r..|..
0040  c4 03 03 0e 06 ea d0 78 d1 76 76 c1 3a b4 6e bf  ....x.vv.:n..
0050  e6 b8 b8 b2 ba 08 d6 6d 0d 38 fb 91 45 de fc ee  ....m .8..E...
0060  8b 6e f8 00 00 1e c0 2b c0 2f cc a9 cc a8 c0 2c  .n.....+ ./.....
0070  c0 30 c0 0a c0 09 c0 13 c0 14 00 33 00 39 00 2f  .0..... ...3.9./
0080  00 35 00 0a 01 00 00 7d 00 00 00 16 00 14 00 00  .5.....} .....
0090  11 77 77 77 2e 6c 69 6e 75 78 6d 69 6e 74 2e 63  .wwwlin uxmint.c
00a0  6f 6d 00 17 00 00 ff 01 00 01 00 00 0a 00 08 00  om.....
00b0  06 00 17 00 18 00 19 00 0b 00 02 01 00 00 23 00  .....
00c0  00 33 74 00 00 00 10 00 17 00 15 02 68 32 08 73  .3t..... ....h2.s
00d0  70 64 79 2f 33 2e 31 08 68 74 74 70 2f 31 2e 31  pdy/3.1. http/1.1
00e0  00 05 00 05 01 00 00 00 00 00 0d 00 18 00 16 04  .....
00f0  01 05 01 06 01 02 01 04 03 05 03 06 03 02 03 05  .....
0100  02 04 02 02 02  .....
  
```

Which application protocol is in this PCAP file?

- A. SSH
- B. TCP
- C. TLS
- D. HTTP

Answer: D

NEW QUESTION 175

Refer to the exhibit.

```

443/tcp closed https

'nap done: 1. IP address (1 host up) scanned in 0.19 seconds
Ps C:\Program Files (x86)\Nmap> nmap --top-ports 10 172.31.45.240
Starting Nmap 7.80 ( https://nmap.org ) at 2019-11-22 22:05 Coordinated Universal Time
'nap scan report for ip-172-31-45-240.us-west-2.compute.internal (172.31.45.240)
Host is up (0.00s latency).

PORT      STATE SERVICE
21/tcp    closed ftp
22/tcp    closed ssh
23/tcp    closed telnet
25/tcp    closed smtp
80/tcp    closed http
110/tcp   closed pop3
139/tcp   open  netbios-ssn
443/tcp   closed https
445/tcp   open  microsoft-ds
3389/tcp  open  ms-wbt-server

'nap done: 1 IP address (1 host up) scanned in 0.19 seconds PS
C:\Program Files (x86)\Nmap>
  
```

What does this output indicate?

- A. HTTPS ports are open on the server.
- B. SMB ports are closed on the server.
- C. FTP ports are open on the server.
- D. Email ports are closed on the server.

Answer: D

NEW QUESTION 180

When trying to evade IDS/IPS devices, which mechanism allows the user to make the data incomprehensible without a specific key, certificate, or password?

- A. fragmentation
- B. pivoting
- C. encryption
- D. stenography

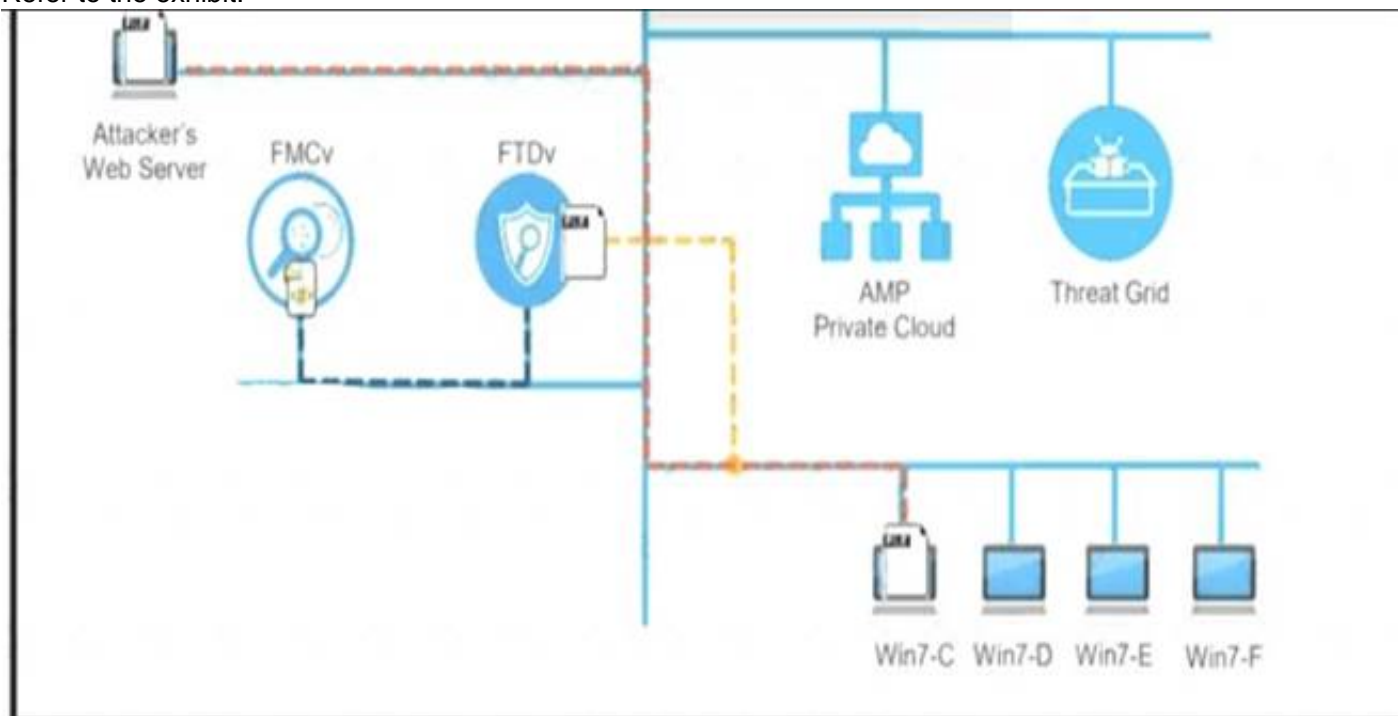
Answer: C

Explanation:

<https://techdifferences.com/difference-between-steganography-and-cryptography.html#:~:text=The%20steganog>

NEW QUESTION 181

Refer to the exhibit.



A workstation downloads a malicious docx file from the Internet and a copy is sent to FTDv. The FTDv sends the file hash to FMC and the file event is recorded. What would have occurred with stronger data visibility?

- A. The traffic would have been monitored at any segment in the network.
- B. Malicious traffic would have been blocked on multiple devices
- C. An extra level of security would have been in place
- D. Detailed information about the data in real time would have been provided

Answer: B

NEW QUESTION 184

Which regular expression matches "color" and "colour"?

- A. colo?ur
- B. col[08]+our
- C. colou?r
- D. col[09]+our

Answer: C

NEW QUESTION 185

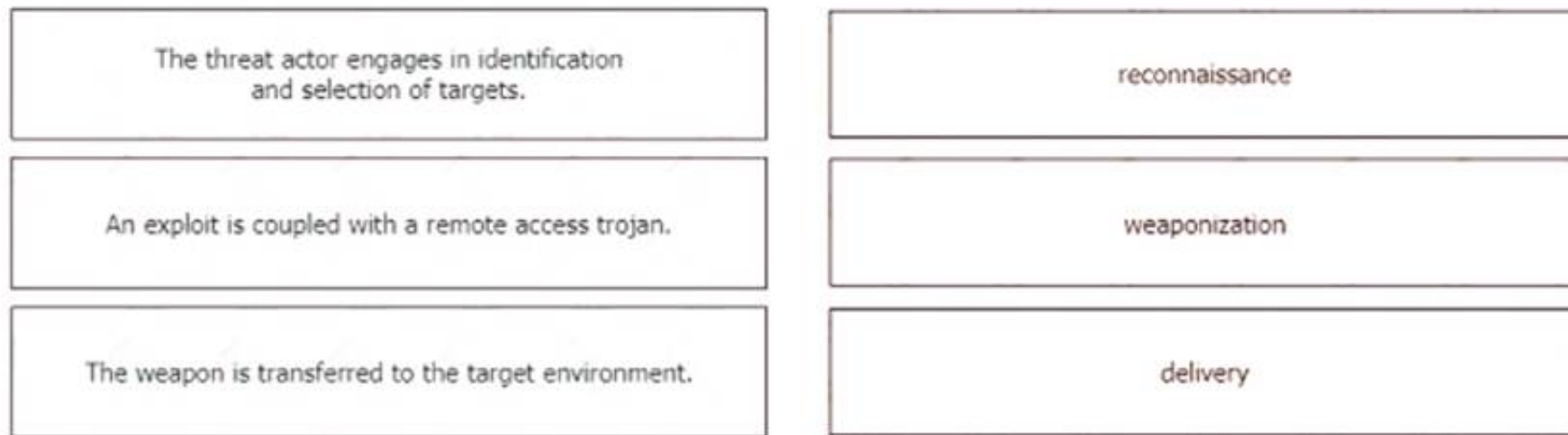
What are the two characteristics of the full packet captures? (Choose two.)

- A. Identifying network loops and collision domains.
- B. Troubleshooting the cause of security and performance issues.
- C. Reassembling fragmented traffic from raw data.
- D. Detecting common hardware faults and identify faulty assets.
- E. Providing a historical record of a network transaction.

Answer: CE

NEW QUESTION 189

Drag and drop the definition from the left onto the phase on the right to classify intrusion events according to the Cyber Kill Chain model.



- A. Mastered
- B. Not Mastered

Answer: A

Explanation:

Delivery: This step involves transmitting the weapon to the target.

Weaponization: In this step, the intruder creates a malware weapon like a virus, worm or such in order to exploit the vulnerabilities of the target. Depending on the target and the purpose of the attacker, this malware can exploit new, undetected vulnerabilities (also known as the zero-day exploits) or it can focus on a combination of different vulnerabilities.

Reconnaissance: In this step, the attacker / intruder chooses their target. Then they conduct an in-depth research on this target to identify its vulnerabilities that can be exploited.

NEW QUESTION 192

What is an attack surface as compared to a vulnerability?

- A. any potential danger to an asset
- B. the sum of all paths for data into and out of the environment
- C. an exploitable weakness in a system or its design
- D. the individuals who perform an attack

Answer: C

Explanation:

An attack surface is the total sum of vulnerabilities that can be exploited to carry out a security attack. Attack surfaces can be physical or digital. The term attack surface is often confused with the term attack vector, but they are not the same thing. The surface is what is being attacked; the vector is the means by which an intruder gains access.

NEW QUESTION 195

What describes the impact of false-positive alerts compared to false-negative alerts?

- A. A false negative is alerting for an XSS attac
- B. An engineer investigates the alert and discovers that an XSS attack happened A false positive is when an XSS attack happens and no alert is raised
- C. A false negative is a legitimate attack triggering a brute-force aler
- D. An engineer investigates the alert and finds out someone intended to break into the system A false positive is when no alert and no attack is occurring
- E. A false positive is an event alerting for a brute-force attack An engineer investigates the alert and discovers that a legitimate user entered the wrong credential several times A false negative is when a threat actor tries to brute-force attack a system and no alert is raised.
- F. A false positive is an event alerting for an SQL injection attack An engineer investigates the alert and discovers that an attack attempt was blocked by IPS A false negative is when the attack gets detected but succeeds and results in a breach.

Answer: C

NEW QUESTION 198

What are the two differences between stateful and deep packet inspection? (Choose two)

- A. Stateful inspection is capable of TCP state tracking, and deep packet filtering checks only TCP source and destination ports
- B. Deep packet inspection is capable of malware blocking, and stateful inspection is not
- C. Deep packet inspection operates on Layer 3 and 4. and stateful inspection operates on Layer 3 of the OSI model
- D. Deep packet inspection is capable of TCP state monitoring only, and stateful inspection can inspect TCP and UDP.
- E. Stateful inspection is capable of packet data inspections, and deep packet inspection is not

Answer: AB

NEW QUESTION 201

What is the virtual address space for a Windows process?

- A. physical location of an object in memory
- B. set of pages that reside in the physical memory
- C. system-level memory protection feature built into the operating system
- D. set of virtual memory addresses that can be used

Answer: D

NEW QUESTION 202

How is NetFlow different from traffic mirroring?

- A. NetFlow collects metadata and traffic mirroring clones data.
- B. Traffic mirroring impacts switch performance and NetFlow does not.
- C. Traffic mirroring costs less to operate than NetFlow.
- D. NetFlow generates more data than traffic mirroring.

Answer: A

NEW QUESTION 204

An engineer needs to have visibility on TCP bandwidth usage, response time, and latency, combined with deep packet inspection to identify unknown software by its network traffic flow. Which two features of Cisco Application Visibility and Control should the engineer use to accomplish this goal? (Choose two.)

- A. management and reporting
- B. traffic filtering
- C. adaptive AVC
- D. metrics collection and exporting
- E. application recognition

Answer: AE

NEW QUESTION 207

What does an attacker use to determine which network ports are listening on a potential target device?

- A. man-in-the-middle
- B. port scanning
- C. SQL injection
- D. ping sweep

Answer: B

NEW QUESTION 212

What is the impact of false positive alerts on business compared to true positive?

- A. True positives affect security as no alarm is raised when an attack has taken place, resulting in a potential breach.
- B. True positive alerts are blocked by mistake as potential attacks affecting application availability.
- C. False positives affect security as no alarm is raised when an attack has taken place, resulting in a potential breach.
- D. False positive alerts are blocked by mistake as potential attacks affecting application availability.

Answer: C

NEW QUESTION 213

Which security principle requires more than one person is required to perform a critical task?

- A. least privilege
- B. need to know
- C. separation of duties
- D. due diligence

Answer: C

NEW QUESTION 218

Which two pieces of information are collected from the IPv4 protocol header? (Choose two.)

- A. UDP port to which the traffic is destined
- B. TCP port from which the traffic was sourced
- C. source IP address of the packet
- D. destination IP address of the packet
- E. UDP port from which the traffic is sourced

Answer: CD

NEW QUESTION 219

At a company party a guest asks questions about the company's user account format and password complexity. How is this type of conversation classified?

- A. Phishing attack
- B. Password Revelation Strategy
- C. Piggybacking
- D. Social Engineering

Answer: D

NEW QUESTION 221

Which type of evidence supports a theory or an assumption that results from initial evidence?

- A. probabilistic
- B. indirect
- C. best
- D. corroborative

Answer: D

Explanation:

Corroborating evidence (or corroboration) is evidence that tends to support a theory or an assumption deduced by some initial evidence. This corroborating evidence confirms the proposition. Cisco CyberOps Associate CBROPS 200-201 Official Cert Guide

NEW QUESTION 222

An offline audit log contains the source IP address of a session suspected to have exploited a vulnerability resulting in system compromise. Which kind of evidence is this IP address?

- A. best evidence
- B. corroborative evidence
- C. indirect evidence
- D. forensic evidence

Answer: B

NEW QUESTION 226

Refer to the exhibit.

```
root@:~# cat access-logs/access_130603.txt | grep '192.168.1.91' | cut -d "\"" -f 2 |  
uniq -c  
1 GET /portal.php?mode=addevent&date=2018-05-01 HTTP/1.1  
1 GET /blog/?attachment_id=2910 HTTP/1.1  
1 GET /blog/?attachment_id=2998&feed=rss2 HTTP/1.1  
1 GET /blog/?attachment_id=3156 HTTP/1.1
```

What is depicted in the exhibit?

- A. Windows Event logs
- B. Apache logs
- C. IIS logs
- D. UNIX-based syslog

Answer: B

NEW QUESTION 231

A security incident occurred with the potential of impacting business services. Who performs the attack?

- A. malware author
- B. threat actor
- C. bug bounty hunter
- D. direct competitor

Answer: B

NEW QUESTION 236

What is the difference between an attack vector and attack surface?

- A. An attack surface identifies vulnerabilities that require user input or validation; and an attack vector identifies vulnerabilities that are independent of user actions.
- B. An attack vector identifies components that can be exploited, and an attack surface identifies the potential path an attack can take to penetrate the network.
- C. An attack surface recognizes which network parts are vulnerable to an attack; and an attack vector identifies which attacks are possible with these vulnerabilities.
- D. An attack vector identifies the potential outcomes of an attack; and an attack surface launches an attack using several methods against the identified vulnerabilities.

Answer: C

NEW QUESTION 241

Which filter allows an engineer to filter traffic in Wireshark to further analyze the PCAP file by only showing the traffic for LAN 10.11.x.x, between workstations and servers without the Internet?

- A. src=10.11.0.0/16 and dst=10.11.0.0/16
- B. ip.src==10.11.0.0/16 and ip.dst==10.11.0.0/16
- C. ip.src=10.11.0.0/16 and ip.dst=10.11.0.0/16
- D. src==10.11.0.0/16 and dst==10.11.0.0/16

Answer: B

NEW QUESTION 244

An organization has recently adjusted its security stance in response to online threats made by a known hacktivist group. What is the initial event called in the NIST SP800-61?

- A. online assault
- B. precursor
- C. trigger
- D. instigator

Answer: B

Explanation:

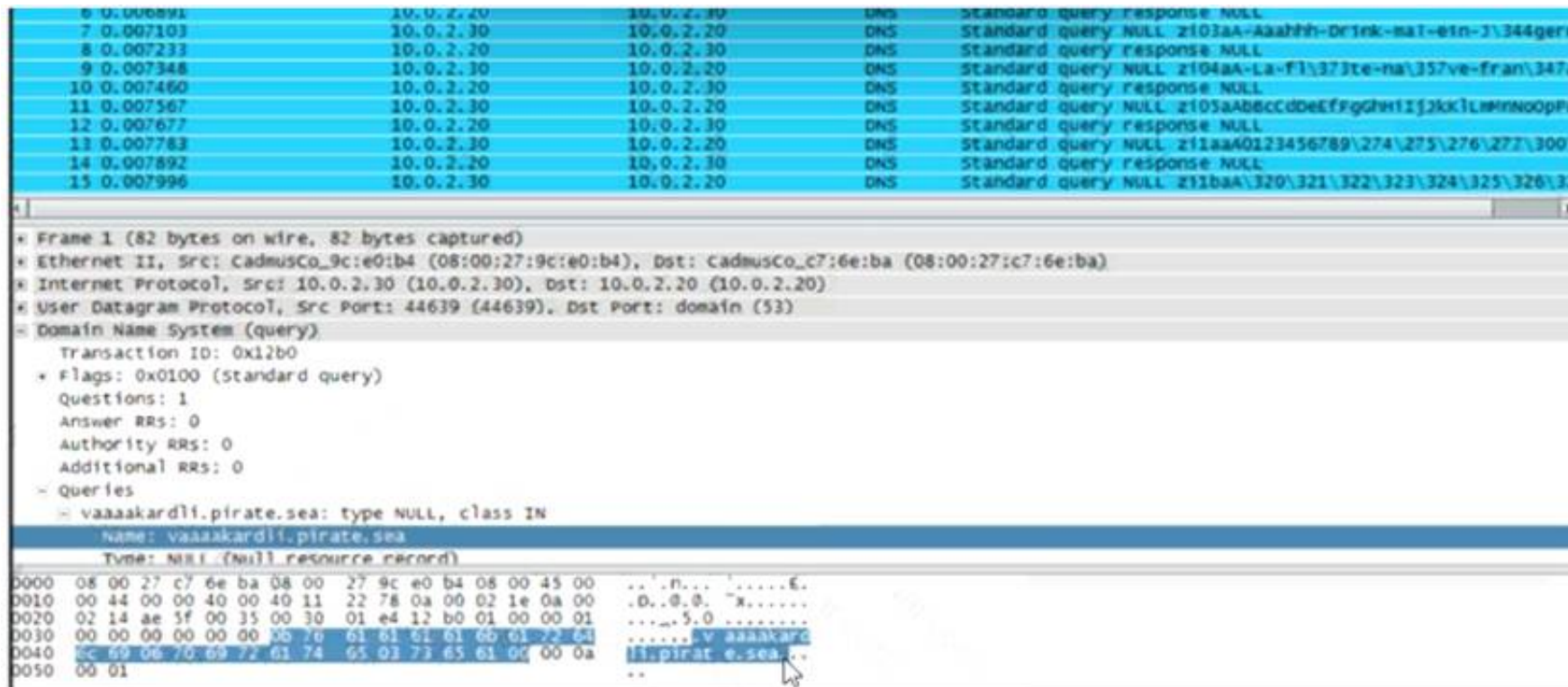
A precursor is a sign that a cyber-attack is about to occur on a system or network. An indicator is the actual alerts that are generated as an attack is happening. Therefore, as a security professional, it's important to know where you can find both precursor and indicator sources of information.

The following are common sources of precursor and indicator information:

- Security Information and Event Management (SIEM)
- Anti-virus and anti-spam software
- File integrity checking applications/software
- Logs from various sources (operating systems, devices, and applications)
- People who report a security incident <https://nvlpubs.nist.gov/nistpubs/SpecialPublications/NIST.SP.800-61r2.pdf>

NEW QUESTION 248

Refer to the exhibit.



What is occurring?

- A. ARP flood
- B. DNS amplification
- C. ARP poisoning
- D. DNS tunneling

Answer: D

NEW QUESTION 251

What is an incident response plan?

- A. an organizational approach to events that could lead to asset loss or disruption of operations
- B. an organizational approach to security management to ensure a service lifecycle and continuous improvements
- C. an organizational approach to disaster recovery and timely restoration of operational services
- D. an organizational approach to system backup and data archiving aligned to regulations

Answer: C

NEW QUESTION 252

What is the difference between the ACK flag and the RST flag?

- A. The RST flag approves the connection, and the ACK flag terminates spontaneous connections.
- B. The ACK flag confirms the received segment, and the RST flag terminates the connection.
- C. The RST flag approves the connection, and the ACK flag indicates that a packet needs to be resent
- D. The ACK flag marks the connection as reliable, and the RST flag indicates the failure within TCP Handshake

Answer: B

NEW QUESTION 253

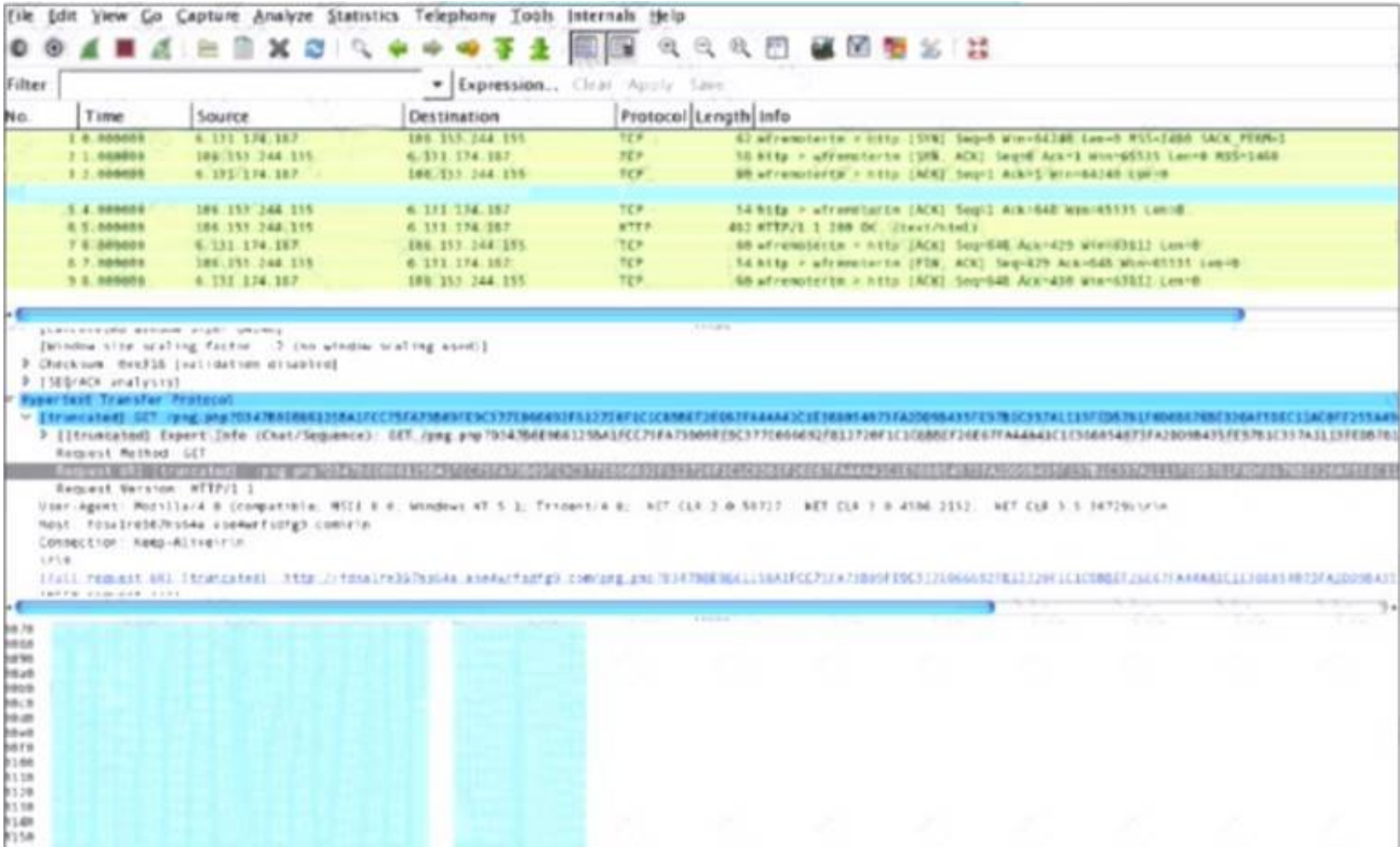
What is the relationship between a vulnerability and a threat?

- A. A threat exploits a vulnerability
- B. A vulnerability is a calculation of the potential loss caused by a threat
- C. A vulnerability exploits a threat
- D. A threat is a calculation of the potential loss caused by a vulnerability

Answer: A

NEW QUESTION 256

Refer to the exhibit.



What is shown in this PCAP file?

- A. Timestamps are indicated with error.
- B. The protocol is TCP.
- C. The User-Agent is Mozilla/5.0.
- D. The HTTP GET is encoded.

Answer: D

NEW QUESTION 258

What is a description of a social engineering attack?

- A. fake offer for free music download to trick the user into providing sensitive data
- B. package deliberately sent to the wrong receiver to advertise a new product
- C. mistakenly received valuable order destined for another person and hidden on purpose
- D. email offering last-minute deals on various vacations around the world with a due date and a counter

Answer: D

NEW QUESTION 262

In a SOC environment, what is a vulnerability management metric?

- A. code signing enforcement
- B. full assets scan
- C. internet exposed devices
- D. single factor authentication

Answer: C

NEW QUESTION 267

A SOC analyst is investigating an incident that involves a Linux system that is identifying specific sessions. Which identifier tracks an active program?

- A. application identification number
- B. active process identification number
- C. runtime identification number
- D. process identification number

Answer: D

NEW QUESTION 270

Which tool provides a full packet capture from network traffic?

- A. Nagios
- B. CAINE
- C. Hydra
- D. Wireshark

Answer: D

NEW QUESTION 271

While viewing packet capture data, an analyst sees that one IP is sending and receiving traffic for multiple devices by modifying the IP header. Which technology makes this behavior possible?

- A. encapsulation
- B. TOR
- C. tunneling
- D. NAT

Answer: D

Explanation:

Network address translation (NAT) is a method of mapping an IP address space into another by modifying network address information in the IP header of packets while they are in transit across a traffic routing device.

NEW QUESTION 272

How does a certificate authority impact security?

- A. It validates client identity when communicating with the server.
- B. It authenticates client identity when requesting an SSL certificate.
- C. It authenticates domain identity when requesting an SSL certificate.
- D. It validates the domain identity of the SSL certificate.

Answer: D

Explanation:

A certificate authority is a computer or entity that creates and issues digital certificates. CA do not "authenticate" it validates. "D" is wrong because The digital certificate validate a user. CA --> DC --> user, server or whatever.

NEW QUESTION 277

What is the impact of encryption?

- A. Confidentiality of the data is kept secure and permissions are validated
- B. Data is accessible and available to permitted individuals
- C. Data is unaltered and its integrity is preserved
- D. Data is secure and unreadable without decrypting it

Answer: A

NEW QUESTION 280

What is a purpose of a vulnerability management framework?

- A. identifies, removes, and mitigates system vulnerabilities
- B. detects and removes vulnerabilities in source code
- C. conducts vulnerability scans on the network
- D. manages a list of reported vulnerabilities

Answer: A

NEW QUESTION 282

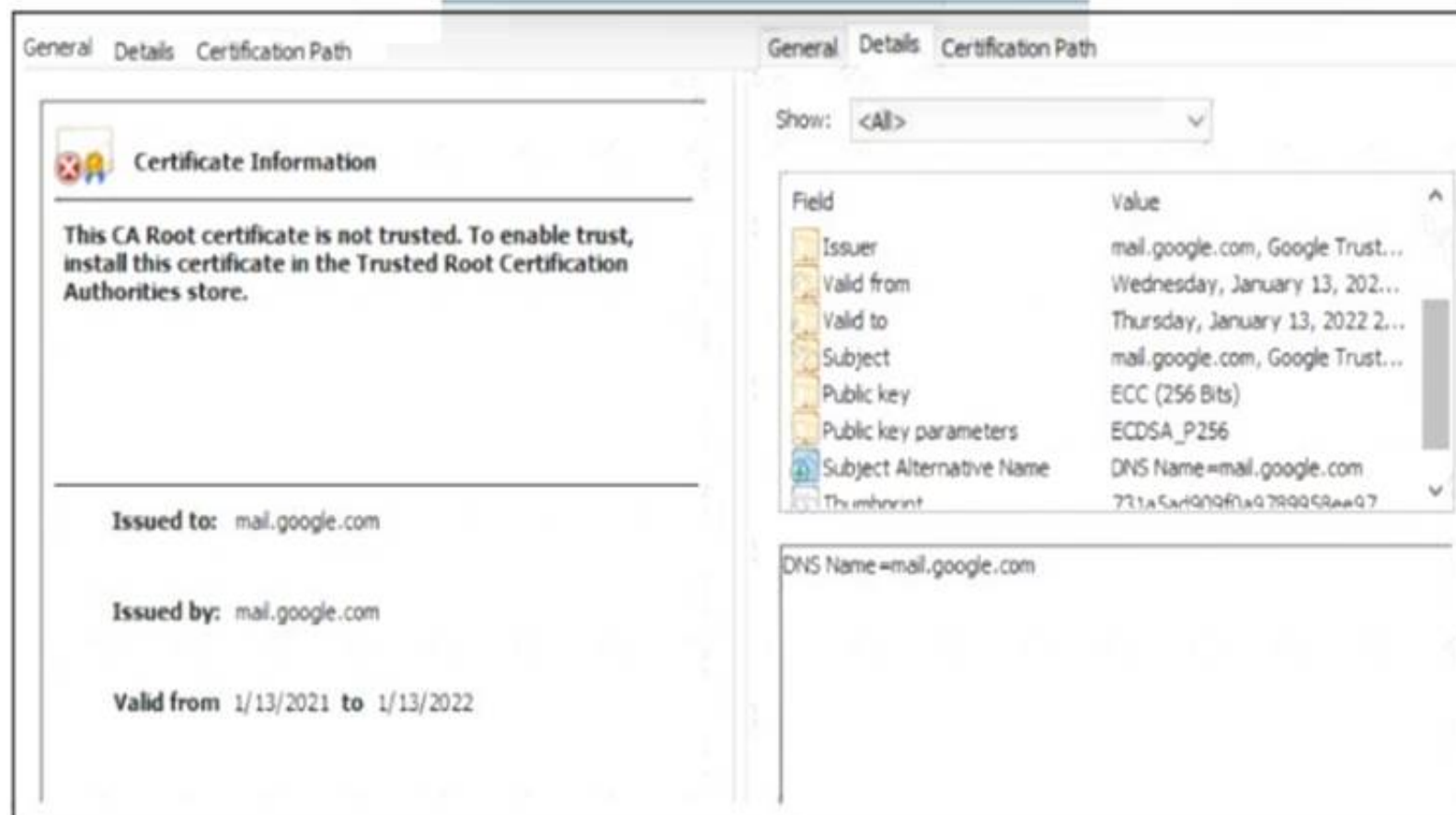
Which regular expression is needed to capture the IP address 192.168.20.232?

- A. ^(?:[0-9]{1,3}\.){3}[0-9]{1,3}
- B. ^(?:[0-9]{1,3}\.){1,4}
- C. ^(?:[0-9]{1,3}\.)'
- D. ^([0-9]{-3})

Answer: A

NEW QUESTION 287

Refer to the exhibit.



A company employee is connecting to mail.google.com from an endpoint device. The website is loaded but with an error. What is occurring?

- A. DNS hijacking attack
- B. Endpoint local time is invalid.
- C. Certificate is not in trusted roots.
- D. man-m-the-middle attack

Answer: C

NEW QUESTION 289

Which security model assumes an attacker within and outside of the network and enforces strict verification before connecting to any system or resource within the organization?

- A. Biba
- B. Object-capability
- C. Take-Grant
- D. Zero Trust

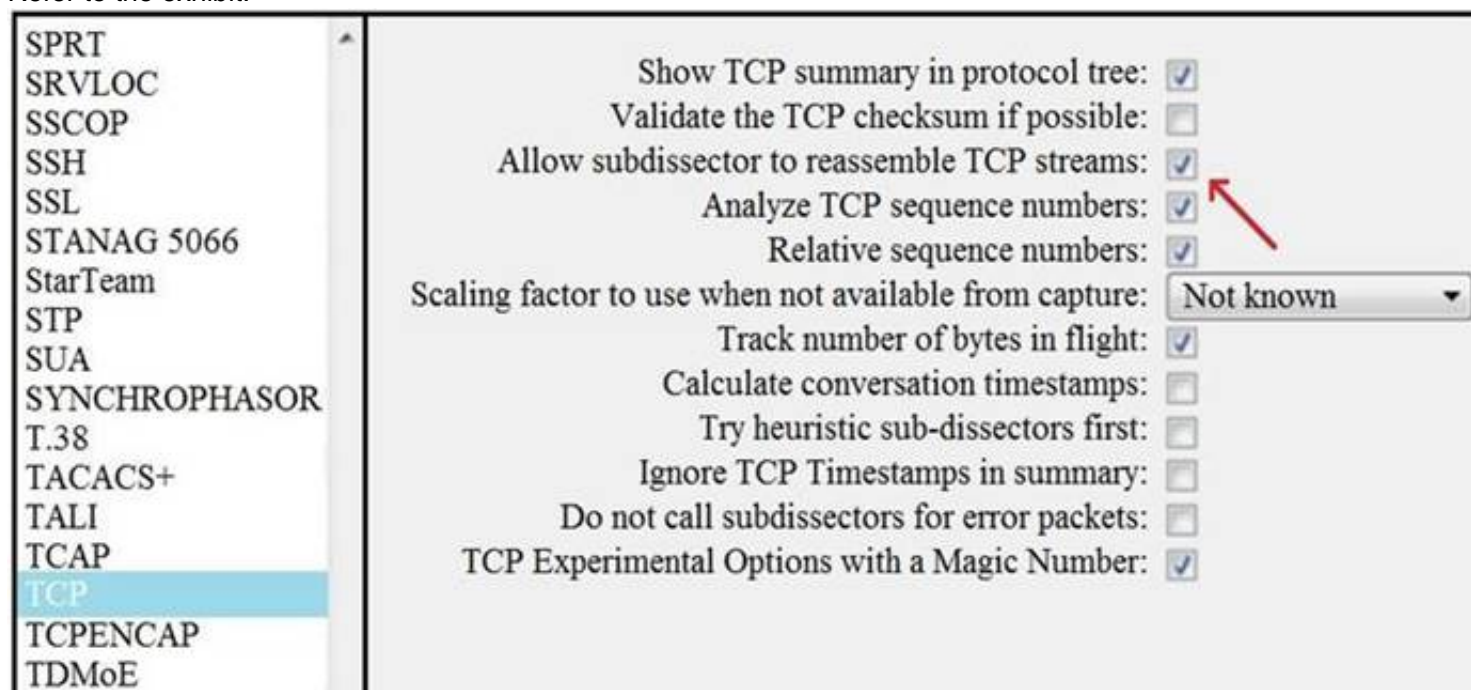
Answer: D

Explanation:

Zero Trust security is an IT security model that requires strict identity verification for every person and device trying to access resources on a private network, regardless of whether they are sitting within or outside of the network perimeter.

NEW QUESTION 292

Refer to the exhibit.



What is the expected result when the "Allow subdissector to reassemble TCP streams" feature is enabled?

- A. insert TCP subdissectors
- B. extract a file from a packet capture
- C. disable TCP streams
- D. unfragment TCP

Answer: D

NEW QUESTION 297

What is the difference between indicator of attack (IoA) and indicators of compromise (IoC)?

- A. IoA is the evidence that a security breach has occurred, and IoC allows organizations to act before the vulnerability can be exploited.
- B. IoA refers to the individual responsible for the security breach, and IoC refers to the resulting loss.
- C. IoC is the evidence that a security breach has occurred, and IoA allows organizations to act before the vulnerability can be exploited.
- D. IoC refers to the individual responsible for the security breach, and IoA refers to the resulting loss.

Answer: C

NEW QUESTION 301

What are two denial-of-service (DoS) attacks? (Choose two)

- A. port scan
- B. SYN flood
- C. man-in-the-middle
- D. phishing
- E. teardrop

Answer: BC

NEW QUESTION 302

A developer is working on a project using a Linux tool that enables writing processes to obtain these required results:

- If the process is unsuccessful, a negative value is returned.
- If the process is successful, 0 value is returned to the child process, and the process ID is sent to the parent process.

Which component results from this operation?

- A. parent directory name of a file pathname
- B. process spawn scheduled
- C. macros for managing CPU sets
- D. new process created by parent process

Answer: D

Explanation:

There are two tasks with specially distinguished process IDs: swapper or sched has process ID 0 and is responsible for paging, and is actually part of the kernel rather than a normal user-mode process. Process ID 1 is usually the init process primarily responsible for starting and shutting down the system. Originally, process ID 1 was not specifically reserved for init by any technical measures: it simply had this ID as a natural consequence of being the first process invoked by the kernel. More recent Unix systems typically have additional kernel components visible as 'processes', in which case PID 1 is actively reserved for the init process to maintain consistency with older systems

NEW QUESTION 305

An employee received an email from a colleague's address asking for the password for the domain controller. The employee noticed a missing letter within the sender's address. What does this incident describe?

- A. brute-force attack
- B. insider attack
- C. shoulder surfing
- D. social engineering

Answer: B

NEW QUESTION 309

.....

Thank You for Trying Our Product

We offer two products:

1st - We have Practice Tests Software with Actual Exam Questions

2nd - Questions and Answers in PDF Format

200-201 Practice Exam Features:

- * 200-201 Questions and Answers Updated Frequently
- * 200-201 Practice Questions Verified by Expert Senior Certified Staff
- * 200-201 Most Realistic Questions that Guarantee you a Pass on Your First Try
- * 200-201 Practice Test Questions in Multiple Choice Formats and Updates for 1 Year

100% Actual & Verified — Instant Download, Please Click
[Order The 200-201 Practice Test Here](#)