

HPE6-A72 Dumps

Aruba Certified Switching Associate Exam

<https://www.certleader.com/HPE6-A72-dumps.html>



NEW QUESTION 1

```
Core# configure terminal
Core(config)# vrf Green
Core(config-vrf)# exit
Core(config)#
Core(config)# interface vlan 50
Core(config-if-vlan)#
?
```

Given the configuration on the CORE switch shown above, what command would follow to assign the switched virtual interface (SVI) vlan 50 to the VRF created?

- A. Core(config-if-vlan)# vrf attach Green
- B. Core(config-if-vlan)# ip vpn-instance Green
- C. Core(config-if-vlan)# ip vrf forwarding Green
- D. Core(config-if-vlan)# routing-context Green vrf

Answer: A

NEW QUESTION 2

Refer to the exhibit.

```
Core-1# show interface mgmt
  Address Mode           : static
  Admin State           : up
  Mac Address           : 90:20:c2:bc:8e:01
  IPv4 address/subnet-mask : 10.1.1.1/24
  Default gateway IPv4   : 10.1.1.254
  IPv6 address/prefix    :
  IPv6 link local address/prefix:
  Default gateway IPv6   :
  Primary Nameserver     : 10.254.1.21
  Secondary Nameserver   :
Core-1# ping 10.1.1.254
connect: Network is unreachable
Core-1#
```

What change on Core-1 will result in a successful ping to 10.1.1.254 from the management interface?

- A. Use the command ping 10.1.1.254 vrf mgmt
- B. Use the command ping 10.1.1.254/24
- C. Change the Core-1 management address to 10.1.1.1/25 first
- D. The destination 10.1.1.254 requires configuring a static route

Answer: A

NEW QUESTION 3

Which two options are the Layer 3 Routing protocols? (Choose two.)

- A. BGP
- B. LLDP
- C. OSPF
- D. MPLS
- E. 802.3ad

Answer: AC

NEW QUESTION 4

What command will save your configuration on an Aruba AOS-CX switch so that your changes automatically load on next reboot?

- A. copy running-config checkpoint startup-config
- B. copy startup-config running-config
- C. copy running-config initial-checkpoint
- D. copy running-config default

Answer: A

NEW QUESTION 5

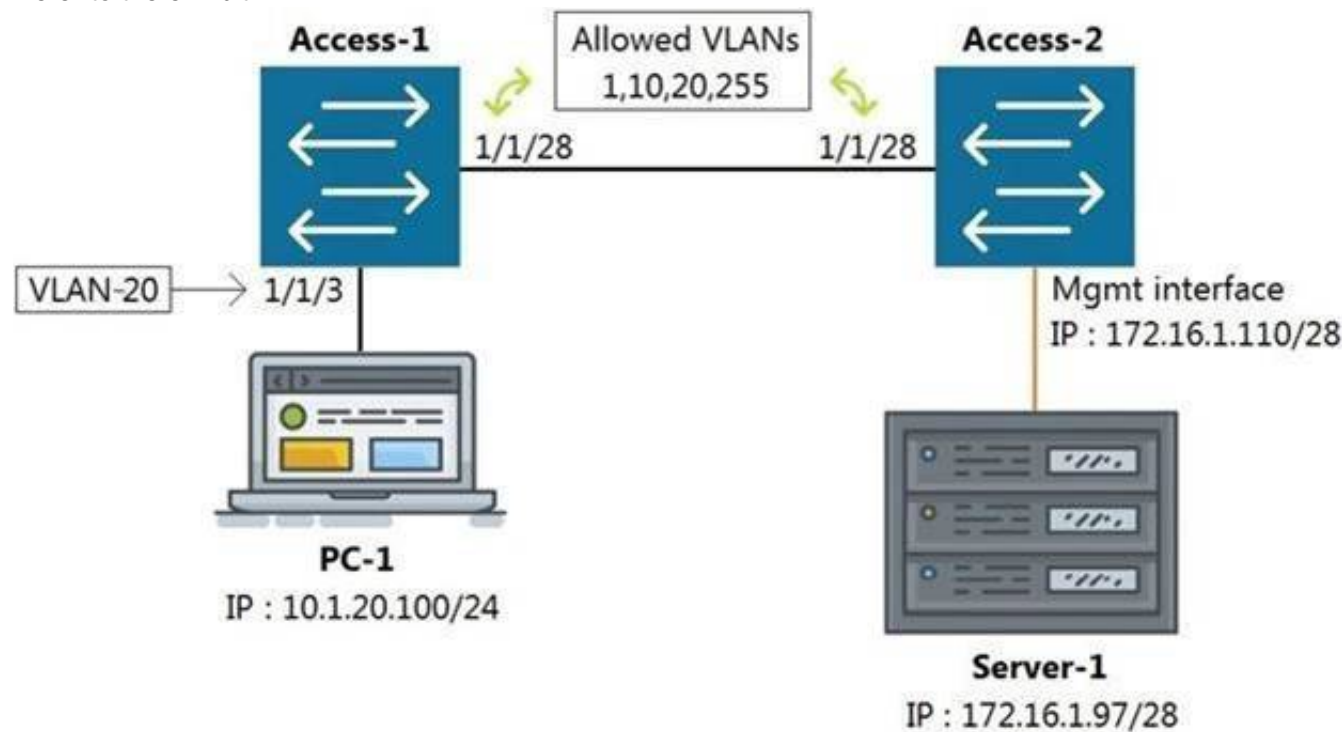
What is the binary conversion of the hexadecimal value 0x2001?

- A. 0010 0001
- B. 0002 0000 0000 0001
- C. 0011 0000 0000 0001
- D. 0010 0000 0000 0001

Answer: D

NEW QUESTION 6

Refer to the exhibit.



All switches are running Aruba OS-CX. While working in the terminal of Access-2, you are unable to reach Server-1 using SSH. What is the correct command to ping Server-1 from Access-2 to test reachability?

- A. Access-2# ping6 172.16.1.97 vrf mgmt
- B. Access-2# ping 172.16.1.97
- C. Access-2# ping 172.16.1.97 vrf default
- D. Access-2# ping 172.16.1.97 vrf mgmt

Answer: D

NEW QUESTION 7

Refer to the exhibit.

```
watchlog/3      0      0      0
dbus-daemon     0      0      15
intfd           0      0      11
ext4-rsv-conver 0      0      0
scsi_eh_6       0      0      0
cpuhp/3         0      0      0
kworker/4:0     0      0      0
scsi_tmf_4      0      0      0
kworker/5:1H    0      0      0
smartd          0      0      3
fault-handlerd  0      0      10
btd             0      0      12
portd           0      0      12
migration/4     0      0      0
scsi_tmf_1      0      0      0
kworker/2:0H    0      0      0
kauditd         0      0      0
rmond           0      0      9
certmgr         0      0      13
icmp6_unreachab 0      0      0
Core-1#
```

The above output is the result of issuing the command show system resource-utilization. What command should be used to enable terminal output line by line or page by page?

- A. The command page
- B. The command terminal length 30
- C. The command more
- D. The command less

Answer: A

NEW QUESTION 8

DRAG DROP

Match each description to the correct management tool for Aruba AOS-CX.

Select and Place:

Management Tools	Answer Area	
	Management Tool	Description
NetEdit		can run as an OVA
Aruba CX Mobile App		requires AOS-CX switches to support HTTPS, SSH, and REST access
		connects to switches via Bluetooth or Wi-Fi
		includes a feature for stacking automation
		supports SNMPv2c to discover third-party devices

- A. Mastered
- B. Not Mastered

Answer: A

Explanation:

Management Tools	Answer Area	
	Management Tool	Description
NetEdit	NetEdit	can run as an OVA
Aruba CX Mobile App	NetEdit	requires AOS-CX switches to support HTTPS, SSH, and REST access
	Aruba CX Mobile App	connects to switches via Bluetooth or Wi-Fi
	Aruba CX Mobile App	includes a feature for stacking automation
	NetEdit	supports SNMPv2c to discover third-party devices

NEW QUESTION 9

Which two types of routes can be found in the IP routing table of an Aruba AOS-CX switch? (Choose two.)

- A. Local
- B. EIGRP
- C. BGP
- D. ISIS
- E. RIPng

Answer: AC

NEW QUESTION 10

Which two commands will save the running-config so that changes will be loaded automatically on the next reboot? (Choose two.)

- A. write memory
- B. save
- C. copy config config1 config startup-config
- D. copy running-config startup-config
- E. copy running-config checkpoint boot-config

Answer: AD

NEW QUESTION 10

DRAG DROP

Match the available stacking feature to the correct AOS-CX switch model. Stacking features may be used more than once.

Select and Place:

Stacking Feature

VSF

VSX

Answer Area

Stacking Feature	AOS-CX Switch Model
	6300M
	6300F
	8320
	8400
	6400

- A. Mastered
- B. Not Mastered

Answer: A

Explanation:

Stacking Feature

VSF

VSX

Answer Area

Stacking Feature	AOS-CX Switch Model
VSF	6300M
VSF	6300F
VSX	8320
VSX	8400
VSX	6400

NEW QUESTION 14

.....

Thank You for Trying Our Product

* 100% Pass or Money Back

All our products come with a 90-day Money Back Guarantee.

* One year free update

You can enjoy free update one year. 24x7 online support.

* Trusted by Millions

We currently serve more than 30,000,000 customers.

* Shop Securely

All transactions are protected by VeriSign!

100% Pass Your HPE6-A72 Exam with Our Prep Materials Via below:

<https://www.certleader.com/HPE6-A72-dumps.html>