

## 300-410 Dumps

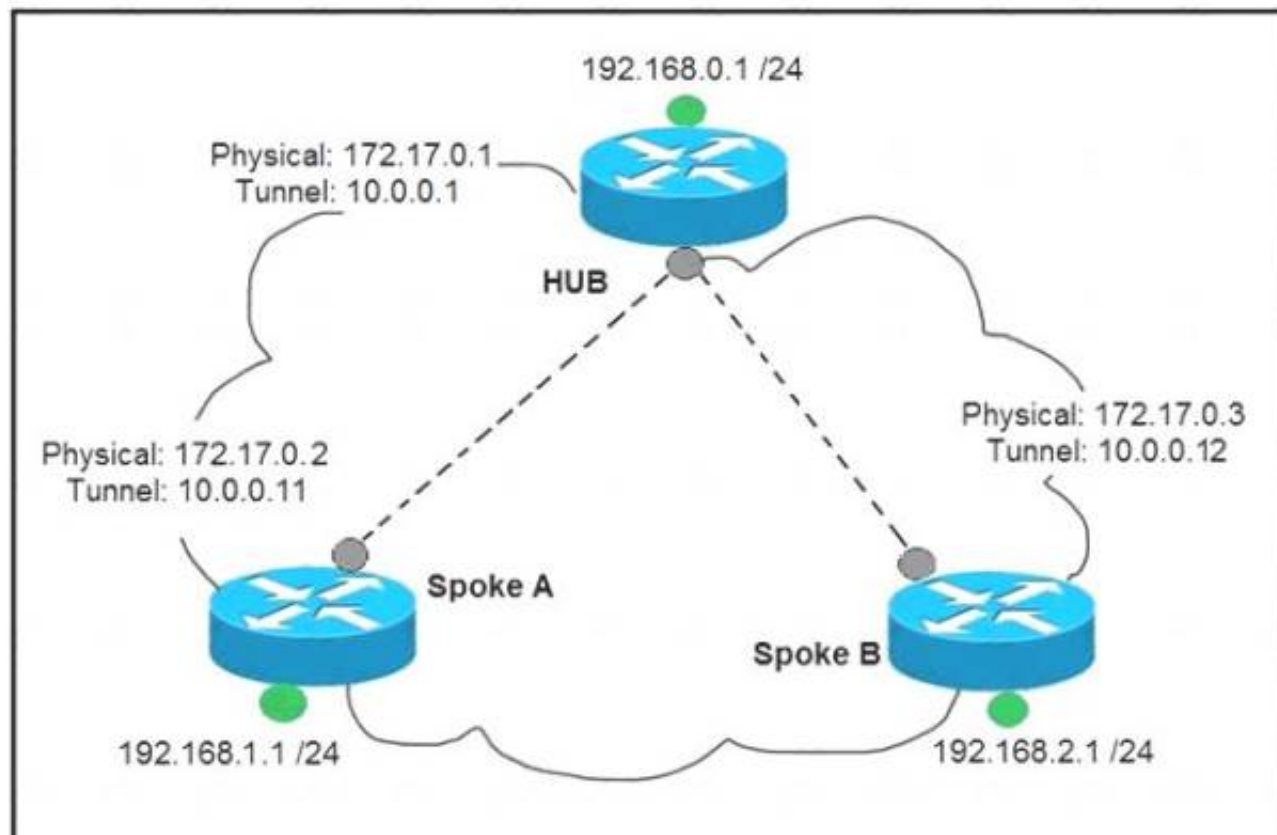
# Implementing Cisco Enterprise Advanced Routing and Services (ENARSI)

<https://www.certleader.com/300-410-dumps.html>



# NEW QUESTION 1

Refer to the exhibit.



Which interface configuration must be configured on the spoke A router to enable a dynamic DMVPN tunnel with the spoke B router?

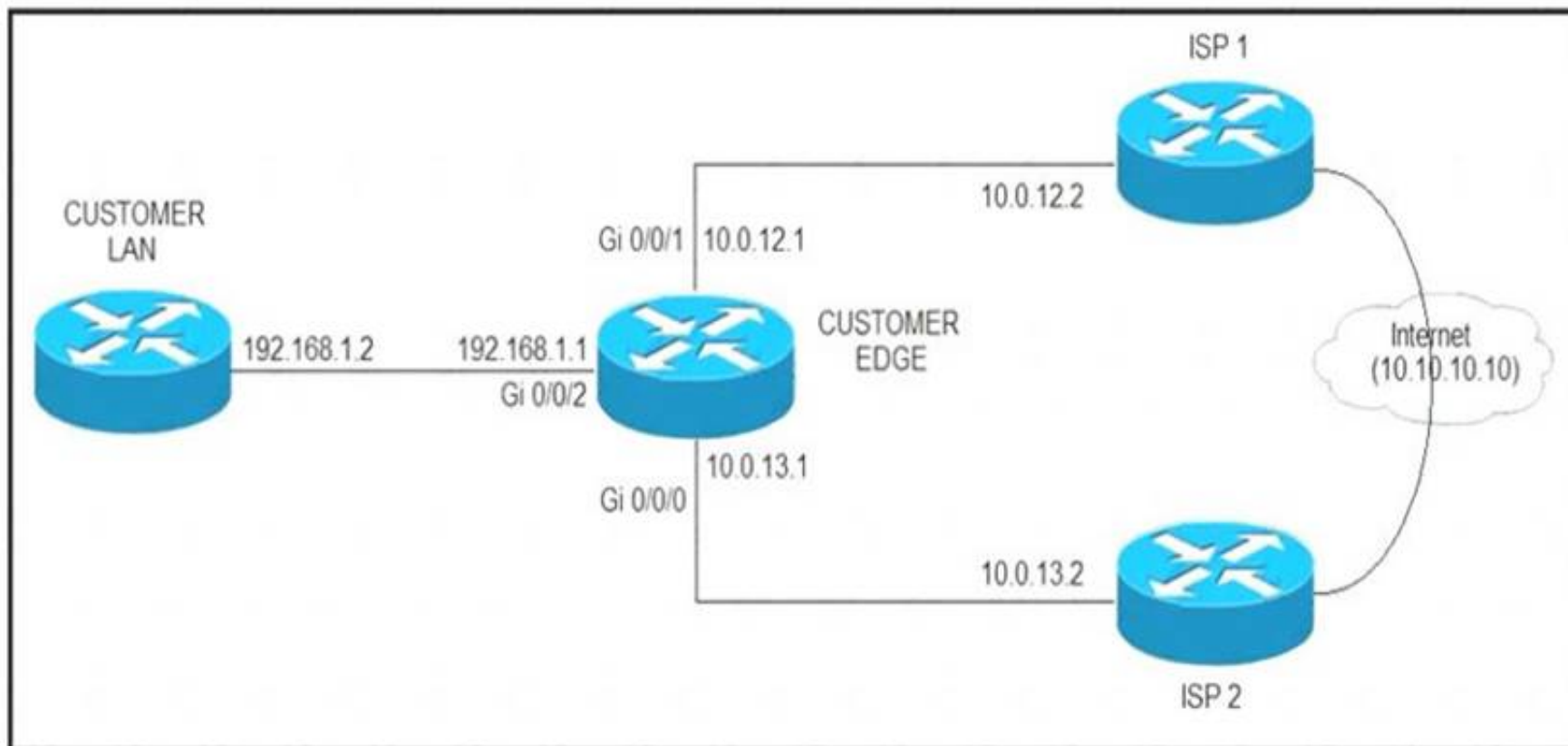
- A. **interface Tunnel0**  
**description mGRE – DMVPN Tunnel**  
**ip address 10.0.0.11 255.255.255.0**  
**ip nhrp map multicast dynamic**  
**ip nhrp network-id 1**  
**tunnel source 10.0.0.1**  
**tunnel destination FastEthernet 0/0**  
**tunnel mode gre multipoint**
- B. **interface Tunnel0**  
**ip address 10.0.0.11 255.255.255.0**  
**ip nhrp network-id 1**  
**tunnel source FastEthernet 0/0**  
**tunnel mode gre multipoint**  
**ip nhrp nhs 10.0.0.1**  
**ip nhrp map 10.0.0.1 172.17.0.1**
- C. **interface Tunnel0**  
**ip address 10.1.0.11 255.255.255.0**  
**ip nhrp network-id 1**  
**tunnel source 1.1.1.10**  
**ip nhrp map 10.0.0.11 172.17.0.2**  
**tunnel mode gre**
- D. **interface Tunnel0**  
**ip address 10.0.0.11 255.255.255.0**  
**ip nhrp map multicast static**  
**ip nhrp network-id 1**  
**tunnel source 10.0.0.1**  
**tunnel mode gre multipoint**

- A. Option A
- B. Option B
- C. Option C
- D. Option D

**Answer: A**

# NEW QUESTION 2

Refer to the exhibit.



ISP 1 and ISP 2 directly connect to the Internet. A customer is tracking both ISP links to achieve redundancy and cannot see the Cisco IOS IP SLA tracking output on the router console. Which command is missing from the IP SLA configuration?

- A. Start-time 00:00
- B. Start-time 0
- C. Start-time immediately
- D. Start-time now

**Answer: D**

### NEW QUESTION 3

Drag and drop the DHCP messages from the left onto the correct uses on the right.

DHCPACK	server-to-client communication, refusing the request for configuration parameters
DHCPINFORM	client-to-server communication, indicating that the network address is already in use
DHCPNAK	server-to-client communication with configuration parameters, including committed network address
DHCPDECLINE	client-to-server communication, asking for only local configuration parameters that the client has already externally configured as an address

- A. Mastered
- B. Not Mastered

**Answer: A**

**Explanation:**

DHCPACK	DHCPNAK
DHCPINFORM	DHCPDECLINE
DHCPNAK	DHCPACK
DHCPDECLINE	DHCPINFORM

### NEW QUESTION 4

Refer to the exhibit.

```
R1#show running-config | section dhcp
ip dhcp excluded-address 192.168.1.1 192.168.1.49
ip dhcp pool DHCP
  network 192.168.1.0 255.255.255.0
  default-router 192.168.1.1
  dns-server 8.8.8.8
  lease 0 12
```

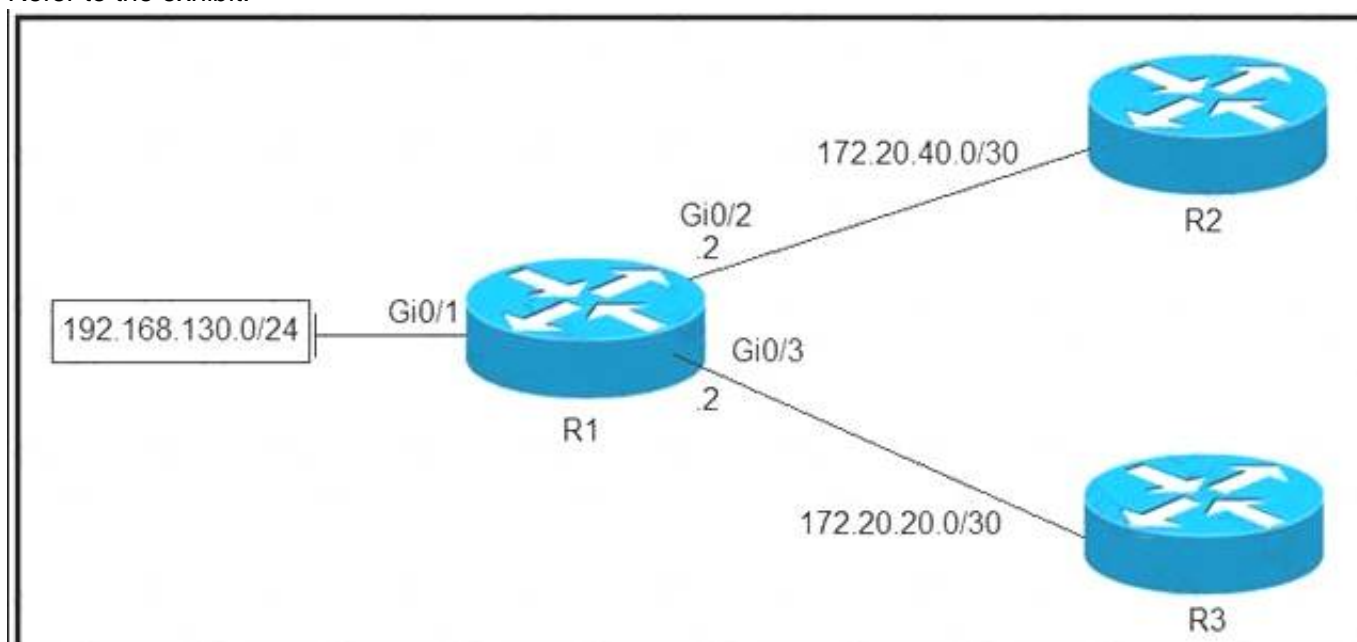
Users report that IP addresses cannot be acquired from the DHCP server. The DHCP server is configured as shown. About 300 total nonconcurrent users are using this DHCP server, but none of them are active for more than two hours per day. Which action fixes the issue within the current resources?

- A. Modify the subnet mask to the network 192.168.1.0 255.255.254.0 command in the DHCP pool
- B. Configure the DHCP lease time to a smaller value
- C. Configure the DHCP lease time to a bigger value
- D. Add the network 192.168.2.0 255.255.255.0 command to the DHCP pool

**Answer: B**

#### NEW QUESTION 5

Refer to the exhibit.



Which configuration configures a policy on R1 to forward any traffic that is sourced from the 192.168.130.0/24 network to R2?

- A. 

```
access-list 1 permit 192.168.130.0 0.0.0.255
!
interface Gi0/2
ip policy route-map test
!
route-map test permit 10
match ip address 1
set ip next-hop 172.20.20.2
```
- B. 

```
access-list 1 permit 192.168.130.0 0.0.0.255
!
interface Gi0/1
ip policy route-map test
!
route-map test permit 10
match ip address 1
set ip next-hop 172.20.40.2
```



- C. **access-list 1 permit 192.168.130.0 0.0.0.255**  
**!**  
**interface Gi0/2**  
**ip policy route-map test**  
**!**  
**route-map test permit 10**  
**match ip address 1**  
**set ip next-hop 172.20.20.1**
- D. **access-list 1 permit 192.168.130.0 0.0.0.255**  
**!**  
**interface Gi0/1**  
**ip policy route-map test**  
**!**  
**route-map test permit 10**  
**match ip address 1**  
**set ip next-hop 172.20.40.1**

- A. Option A  
B. Option B  
C. Option C  
D. Option D

**Answer:** D

#### NEW QUESTION 6

Refer to the exhibit.

```
R1(config) # do show running-config | section line|username
username cisco secret 5 $1$yb/o$L3G5cXODxpYMSJ70PzEyo0
line con 0
  logging synchronous
line vty 0 4
  login local
  transport input telnet
R1(config) # logging console 7
R1(config) # do debug aaa authentication
R1(config) #
```

An administrator that is connected to the console does not see debug messages when remote users log in. Which action ensures that debug messages are displayed for remote logins?

- A. Enter the transport input ssh configuration command.  
B. Enter the terminal monitor exec command.  
C. Enter the logging console debugging configuration command.  
D. Enter the aaa new-model configuration command.

**Answer:** B

#### NEW QUESTION 7

Refer to the exhibit.

```
* Jun 28 14:41:57: %BGP-5-ADJCHANGE: neighbor 192.168.2.2 Down User reset
* Jun 28 14:41:57: %BGP_SESSION-5-ADJCHANGE: neighbor 192.168.2.2 IPv4 Unicast
topology base removed from session User reset
* Jun 28 14:41:57: %BGP-5-ADJCHANGE: neighbor 192.168.2.2 Up
R1#show clock
*15:42:00.506 CET Fri Jun 28 2019
```

An engineer is troubleshooting BGP on a device but discovers that the clock on the device does not correspond to the time stamp of the log entries. Which action ensures consistency between the two times?

- A. Configure the service timestamps log uptime command in global configuration mode.  
B. Configure the logging clock synchronize command in global configuration mode.  
C. Configure the service timestamps log datetime localtime command in global configuration mode.

D. Make sure that the clock on the device is synchronized with an NTP server.

**Answer:** D

#### NEW QUESTION 8

What is a prerequisite for configuring BFD?

- A. Jumbo frame support must be configured on the router that is using BFD.
- B. All routers in the path between two BFD endpoints must have BFD enabled.
- C. Cisco Express Forwarding must be enabled on all participating BFD endpoints.
- D. To use BFD with BGP, the timers 3 9 command must first be configured in the BGP routing process.

**Answer:** C

#### NEW QUESTION 9

Refer to the exhibit.

```
!
neighbor 10.222.1.1 route-map SET-WEIGHT in
neighbor 10.222.1.1 remote-as 1
!
ip as-path access-list 200 permit ^690$
ip as-path access-list 200 permit ^1800
!
route-map SET-WEIGHT permit 10
 match as-path 200
 set local-preference 250
 set weight 200
```

A router receiving BGP routing updates from multiple neighbors for routers in AS 690. What is the reason that the router still sends traffic that is destined to AS 690 to a neighbor other than 10.222.1.1?

- A. The local preference value in another neighbor statement is higher than 250.
- B. The local preference value should be set to the same value as the weight in the route map.
- C. The route map is applied in the wrong direction.
- D. The weight value in another statement is higher than 200.

**Answer:** D

#### NEW QUESTION 10

Refer to the exhibit.

```
R1#show ip ssh
SSH Disabled – version 1.99
%Please create RSA keys to enable SSH (and of atleast 768 bits for SSH v2).
Authentication timeout: 120 secs; Authentication retries: 3
Minimum expected Diffie Hellman key size: 1024 bits
IOS Keys in SECSH format (ssh-rsa, base64 encoded) : NONE
R1#
```

An engineer is trying to connect to a device with SSH but cannot connect. The engineer connects by using the console and finds the displayed output when troubleshooting. Which command must be used in configuration mode to enable SSH on the device?

- A. no ip ssh disable
- B. ip ssh enable
- C. ip ssh version 2
- D. crypto key generate rsa

**Answer:** D

#### NEW QUESTION 10

Drag and drop the addresses from the left onto the correct IPv6 filter purposes on the right.



permit ip 2001:d8b:800:200c::/117 2001:0DBB:800:2010::/64 eq 443	Permit NTP from this source 2001:0D8B:0800:200c::1f
permit ip 2001:D88:800:200C::e/126 2001:0DBB:800:2010::/64 eq 514	Permit syslog from this source 2001:0D88:0800:200c::1c
permit ip 2001:d8b:800:200c::800 /117 2001:0DBB:800:2010::/64 eq 80	Permit HTTP from this source 2001:0D8B:0800:200c::0ff
permit ip 2001:D8B:800:200C::c/126 2001:0DBB:800:2010::/64 eq 123	Permit HTTPS from this source 2001:0D8B:0800:200c::07ff

- A. Mastered  
B. Not Mastered

**Answer:** A

**Explanation:**

permit ip 2001:d8b:800:200c::/117 2001:0DBB:800:2010::/64 eq 443	permit ip 2001:D8B:800:200C::c/126 2001:0DBB:800:2010::/64 eq 123
permit ip 2001:D88:800:200C::e/126 2001:0DBB:800:2010::/64 eq 514	permit ip 2001:D88:800:200C::e/126 2001:0DBB:800:2010::/64 eq 514
permit ip 2001:d8b:800:200c::800 /117 2001:0DBB:800:2010::/64 eq 80	permit ip 2001:d8b:800:200c::800 /117 2001:0DBB:800:2010::/64 eq 80
permit ip 2001:D8B:800:200C::c/126 2001:0DBB:800:2010::/64 eq 123	permit ip 2001:d8b:800:200c::/117 2001:0DBB:800:2010::/64 eq 443

#### NEW QUESTION 14

Which command allows traffic to load-balance in an MPLS Layer 3 VPN configuration?

- A. multi-paths eibgp 2  
B. maximum-paths 2  
C. maximum-paths ibgp 2  
D. multi-paths 2

**Answer:** B

#### NEW QUESTION 16

While troubleshooting connectivity issues to a router, these details are noticed:

- Standard pings to all router interfaces, including loopbacks, are successful.
- Data traffic is unaffected.
- SNMP connectivity is intermittent.
- SSH is either slow or disconnects frequently.

Which command must be configured first to troubleshoot this issue?

- A. show policy-map control-plane  
B. show policy-map  
C. show interface | inc drop  
D. show ip route

**Answer:** A

#### NEW QUESTION 19

Refer to the exhibit.

```
snmp-server community ciscotest1
snmp-server host 192.168.1.128 ciscotest
snmp-sever enable traps bgp
```

Network operations cannot read or write any configuration on the device with this configuration from the operations subnet. Which two configurations fix the issue? (Choose two.)



- A. Configure SNMP rw permission in addition to community ciscotest.
- B. Modify access list 1 and allow operations subnet in the access list.
- C. Modify access list 1 and allow SNMP in the access list.
- D. Configure SNMP rw permission in addition to version 1.
- E. Configure SNMP rw permission in addition to community ciscotest 1.

**Answer:** AB

#### NEW QUESTION 23

Drag and drop the packet types from the left onto the correct descriptions on the right.

data plane packets	user-generated packets that are always forwarded by network devices to other end-station devices
control plane packets	network device generated or received packets that are used for the creation of the network itself
management plane packets	network device generated or received packets; packets that are used to operate the network
services plane packets	user-generated packets that are forwarded by network devices to other end-station devices, but that require higher priority than the normal traffic by the network devices

- A. Mastered
- B. Not Mastered

**Answer:** A

**Explanation:**

data plane packets	data plane packets
control plane packets	control plane packets
management plane packets	management plane packets
services plane packets	services plane packets

#### NEW QUESTION 27

Drag and drop the MPLS VPN concepts from the left onto the correct descriptions on the right.

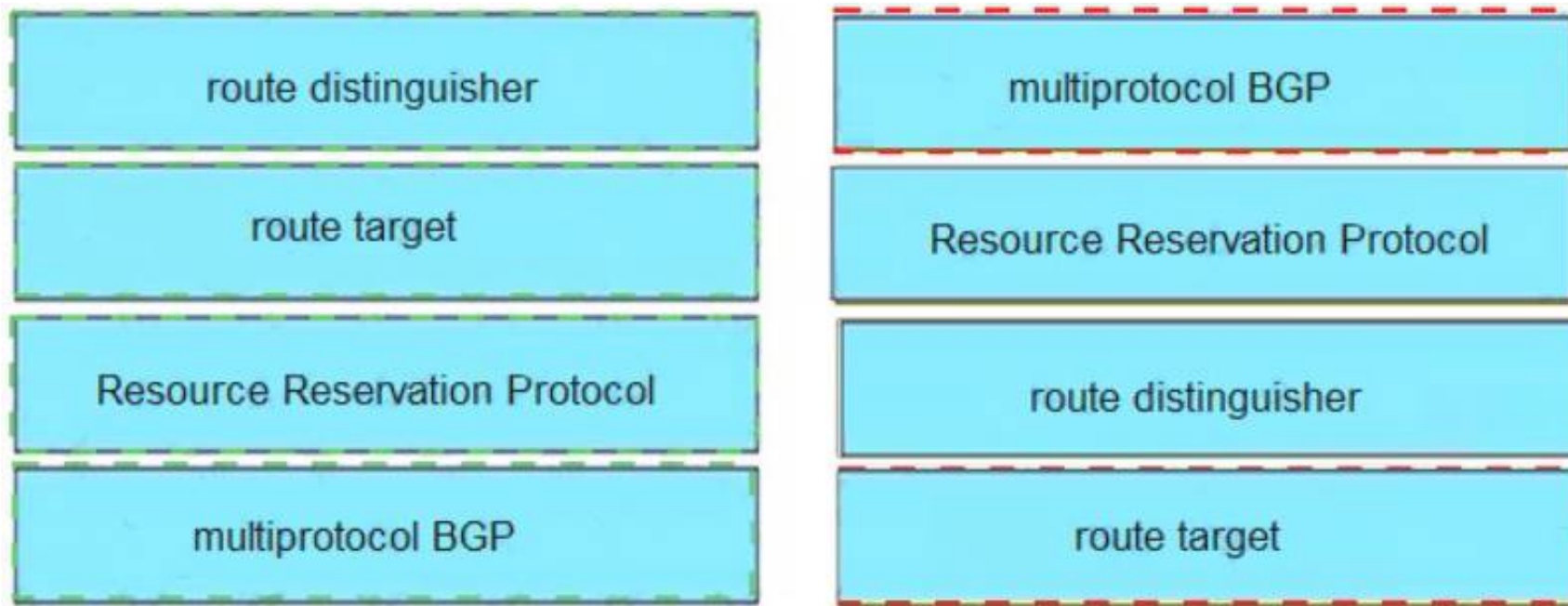
route distinguisher	propagates VPN reachability information
route target	distributes labels for traffic engineering
Resource Reservation Protocol	uniquely identifies a customer prefix
multiprotocol BGP	controls the import/export of customer prefixes

- A. Mastered
- B. Not Mastered

**Answer:** A

**Explanation:**





**NEW QUESTION 28**

Which method changes the forwarding decision that a router makes without first changing the routing table or influencing the IP data plane?

- A. nonbroadcast multiaccess
- B. packet switching
- C. policy-based routing
- D. forwarding information base

**Answer: C**

**NEW QUESTION 30**

Refer to the exhibit.

```
R200#show ip bgp summary
BGP router identifier 10.1.1.1, local AS number 65000
BGP table version is 26, main routing table version 26
1 network entries using 132 bytes of memory
1 path entries using 52 bytes of memory
2/1 BGP path/bestpath attribute entries using 296 bytes of memory
0 BGP route-map cache entries using 0 bytes of memory
0 BGP filter-list cache entries using 0 bytes of memory
Bitfield cache entries: current 1 (at peak 2) using 28 bytes of memory
BGP using 508 total bytes of memory
BGP activity 24/23 prefixes, 24/23 paths, scan interval 60 secs
Neighbor      V   AS MsgRcvd MsgSent   TblVer  InQ  OutQ  Up/Down  State/PfxRcd
192.0.2.2     4 65100  20335    20329     0   0    0 00:02:04  Idle (PfxCt)
R200#
```

In which circumstance does the BGP neighbor remain in the idle condition?

- A. if prefixes are not received from the BGP peer
- B. if prefixes reach the maximum limit
- C. if a prefix list is applied on the inbound direction
- D. if prefixes exceed the maximum limit

**Answer: D**

**NEW QUESTION 31**

Refer to the exhibit.

```
Router#show access-lists
Standard IP access list 1
    10 permit 192.168.2.2 (1 match)
Router#
Router#show route-map
route-map RM-OSPF-DL, permit, sequence 10
Match clauses:
    ip address (access-lists): 1
Set clauses:
Policy routing matches: 0 packets, 0 bytes
Router#
Router#show running-config | section ospf
router ospf 1
    network 192.168.1.1 0.0.0.0 area 0
    network 192.168.12.0 0.0.0.255 area 0
    distribute-list route-map RM-OSPF-DL in
Router#
```

An engineer is trying to block the route to 192.168.2.2 from the routing table by using the configuration that is shown. The route is still present in the routing table as an OSPF route. Which action blocks the route?

- A. Use an extended access list instead of a standard access list.
- B. Change sequence 10 in the route-map command from permit to deny.
- C. Use a prefix list instead of an access list in the route map.
- D. Add this statement to the route map: route-map RM-OSPF-DL deny 20.

**Answer: B**

#### NEW QUESTION 32

Refer to the exhibit.

```
Cat3850-Stack-2# show policy-map

Policy Map LIMIT_BGP
Class BGP
    drop

Policy Map SHAPE_BGP
Class BGP
    Average Rate Traffic Shaping
    cir 10000000 (bps)

Policy Map POLICE_BGP
Class BGP
    police cir 1000k bc 1500
    conform-action transmit
    exceed-action transmit

Policy Map COPP
Class BGP
    police cir 1000k bc 1500
    conform-action transmit
    exceed-action drop
```

Which control plane policy limits BGP traffic that is destined to the CPU to 1 Mbps and ignores BGP traffic that is sent at higher rate?

- A. policy-map SHAPE\_BGP
- B. policy-map LIMIT\_BGP
- C. policy-map POLICE\_BGP
- D. policy-map COPP

**Answer: D**

#### NEW QUESTION 35

.....

## Thank You for Trying Our Product

\* 100% Pass or Money Back

All our products come with a 90-day Money Back Guarantee.

\* One year free update

You can enjoy free update one year. 24x7 online support.

\* Trusted by Millions

We currently serve more than 30,000,000 customers.

\* Shop Securely

All transactions are protected by VeriSign!

**100% Pass Your 300-410 Exam with Our Prep Materials Via below:**

<https://www.certleader.com/300-410-dumps.html>