

## 200-301 Dumps

### Cisco Certified Network Associate

<https://www.certleader.com/200-301-dumps.html>



**NEW QUESTION 1**

What are two benefits of network automation? (Choose two)

- A. reduced operational costs
- B. reduced hardware footprint
- C. faster changes with more reliable results
- D. fewer network failures
- E. increased network security

**Answer:** AC

**NEW QUESTION 2**

When configuring IPv6 on an interface, which two IPv6 multicast groups are joined? (Choose two)

- A. 2000::/3
- B. 2002::5
- C. FC00::/7
- D. FF02::1
- E. FF02::2

**Answer:** DE

**NEW QUESTION 3**

Which command prevents passwords from being stored in the configuration as plain text on a router or switch?

- A. enable secret
- B. service password-encryption
- C. username Cisco password encrypt
- D. enable password

**Answer:** B

**NEW QUESTION 4**

What are two southbound APIs? (Choose two )

- A. OpenFlow
- B. NETCONF
- C. Thrift
- D. CORBA
- E. DSC

**Answer:** CD

**NEW QUESTION 5**

Which set of action satisfy the requirement for multifactor authentication?

- A. The user swipes a key fob, then clicks through an email link
- B. The user enters a user name and password, and then clicks a notification in an authentication app on a mobile device
- C. The user enters a PIN into an RSA token, and then enters the displayed RSA key on a login screen
- D. The user enters a user name and password and then re-enters the credentials on a second screen

**Answer:** A

**NEW QUESTION 6**

in Which way does a spine and-leaf architecture allow for scalability in a network when additional access ports are required?

- A. A spine switch and a leaf switch can be added with redundant connections between them
- B. A spine switch can be added with at least 40 GB uplinks
- C. A leaf switch can be added with a single connection to a core spine switch.
- D. A leaf switch can be added with connections to every spine switch

**Answer:** D

**NEW QUESTION 7**

Which output displays a JSON data representation?

- ☐ {  
  "response": {  
    "taskId": {},  
    "url": "string"  
  }  
  "version": "string"  
}
- ☐ {  
  "response": {  
    "taskId": {},  
    "url": "string"  
  };  
  "version": "string"  
}
- ☐ {  
  "response": {  
    "taskId": {},  
    "url": "string"  
  },  
  "version": "string"  
}
- ☐ {  
  "response": {  
    "taskId": {},  
    "url": "string"  
  },  
  "version": "string"  
}

- A. Option A  
B. Option B  
C. Option C  
D. Option D

**Answer:** C

#### NEW QUESTION 8

What is the primary different between AAA authentication and authorization?

- A. Authentication verifies a username and password, and authorization handles the communication between the authentication agent and the user database.  
B. Authentication identifies a user who is attempting to access a system, and authorization validates the users password  
C. Authentication identifies and verifies a user who is attempting to access a system, and authorization controls the tasks the user can perform.  
D. Authentication controls the system processes a user can access and authorization logs the activities the user initiates

**Answer:** C

#### NEW QUESTION 9

What is a benefit of using a Cisco Wireless LAN Controller?

- A. Central AP management requires more complex configurations  
B. Unique SSIDs cannot use the same authentication method  
C. It supports autonomous and lightweight APs  
D. It eliminates the need to configure each access point individually

**Answer:** D

#### NEW QUESTION 10

What are two characteristics of a controller-based network? (Choose two)

- A. The administrator can make configuration updates from the CLI  
B. It uses northbound and southbound APIs to communicate between architectural layers  
C. It moves the control plane to a central point.  
D. It decentralizes the control plane, which allows each device to make its own forwarding decisions  
E. It uses Telnet to report system issues.

**Answer:** AC

#### NEW QUESTION 10

Refer to Exhibit.

```
SW2
vtp domain cisco
vtp mode transparent
vtp password ciscotest
interface fastethernet0/1
  description connection to sw1
  switchport mode trunk
  switchport trunk encapsulation dot1q
```

How does SW2 interact with other switches in this VTP domain?

- A. It processes VTP updates from any VTP clients on the network on its access ports.
- B. It receives updates from all VTP servers and forwards all locally configured VLANs out all trunk ports
- C. It forwards only the VTP advertisements that it receives on its trunk ports.
- D. It transmits and processes VTP updates from any VTP Clients on the network on its trunk ports

**Answer: C**

#### NEW QUESTION 12

Which unified access point mode continues to serve wireless clients after losing connectivity to the Cisco Wireless LAN Controller?

- A. sniffer
- B. mesh
- C. flexconnect
- D. local

**Answer: B**

#### NEW QUESTION 15

What is the primary effect of the spanning-tree portfast command?

- A. it enables BPDU messages
- B. It minimizes spanning-tree convergence time
- C. It immediately puts the port into the forwarding state when the switch is reloaded
- D. It immediately enables the port in the listening state

**Answer: A**

#### NEW QUESTION 19

Refer to the exhibit.

```
ip arp inspection vlan 5-10
interface fastethernet 0/1
  switchport mode access
  switchport access vlan 5
```

What is the effect of this configuration?

- A. All ARP packets are dropped by the switch
- B. Egress traffic is passed only if the destination is a DHCP server.
- C. All ingress and egress traffic is dropped because the interface is untrusted
- D. The switch discard all ingress ARP traffic with invalid MAC-to-IP address bindings.

**Answer: D**

#### NEW QUESTION 22

Drag and drop the AAA functions from the left onto the correct AAA services on the right

records user activities
restricts the services that are available to a user

Authentication
----------------

identifies the user
controls the actions that a user can perform

Authorization
---------------

provides analytical information for the network administrator
verifies the password associated with a user

Accounting
------------

- A. Mastered  
B. Not Mastered

**Answer:** A

**Explanation:**

records user activities
restricts the services that are available to a user

Authentication
identifies the user
controls the actions that a user can perform

identifies the user
controls the actions that a user can perform

Authorization
records user activities
restricts the services that are available to a user

provides analytical information for the network administrator
verifies the password associated with a user

Accounting
provides analytical information for the network administrator
verifies the password associated with a user

**NEW QUESTION 26**



An engineer is asked to protect unused ports that are configured in the default VLAN on a switch. Which two steps will fulfill the request? (Choose two)

- A. Configure the ports in an EtherChannel.
- B. Administratively shut down the ports
- C. Configure the port type as access and place in VLAN 99
- D. Configure the ports as trunk ports
- E. Enable the Cisco Discovery Protocol

**Answer:** AD

#### NEW QUESTION 28

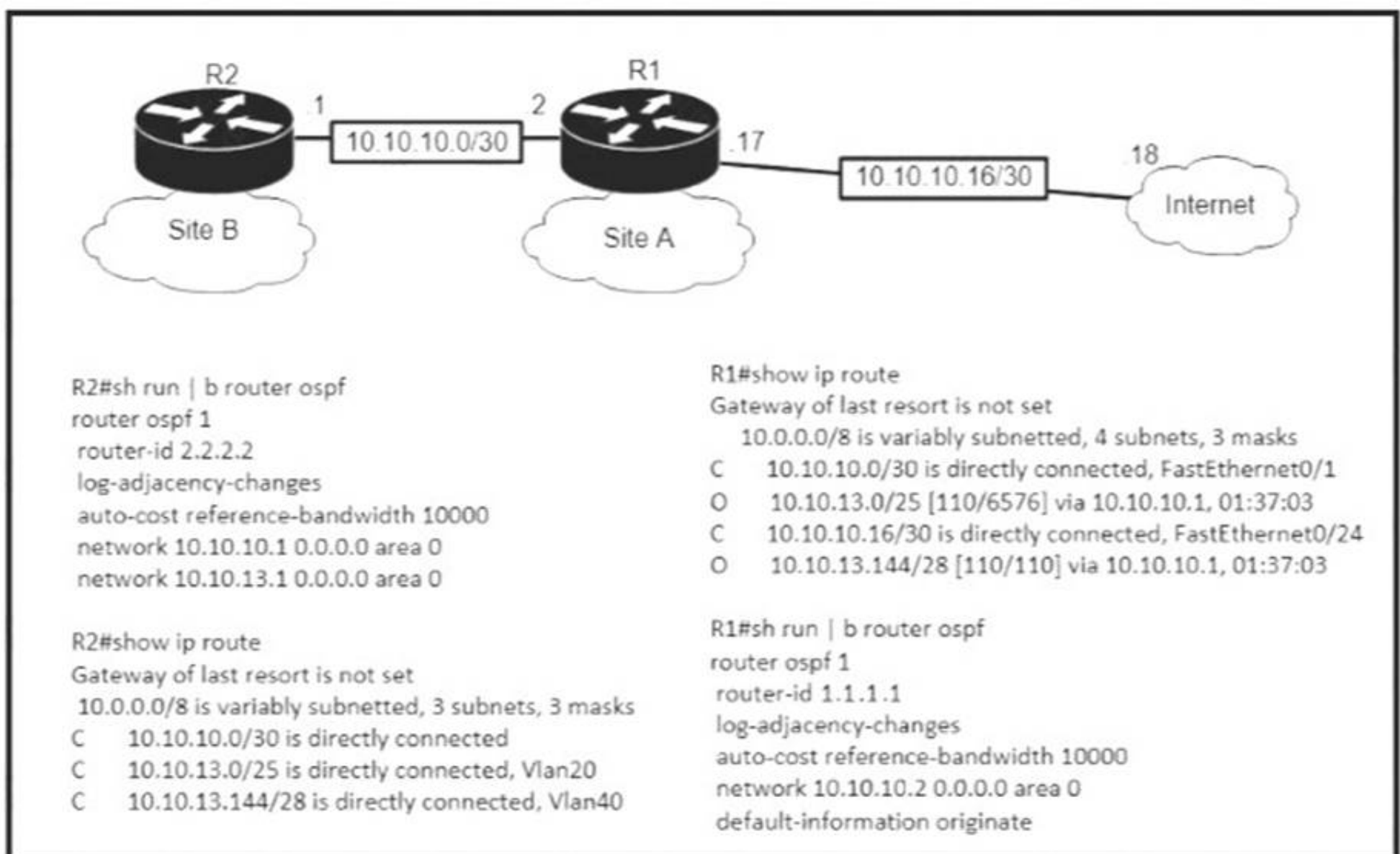
Which QoS Profile is selected in the GUI when configuring a voice over WLAN deployment?

- A. Bronze
- B. Platinum
- C. Silver
- D. Gold

**Answer:** B

#### NEW QUESTION 32

Refer to the exhibit.



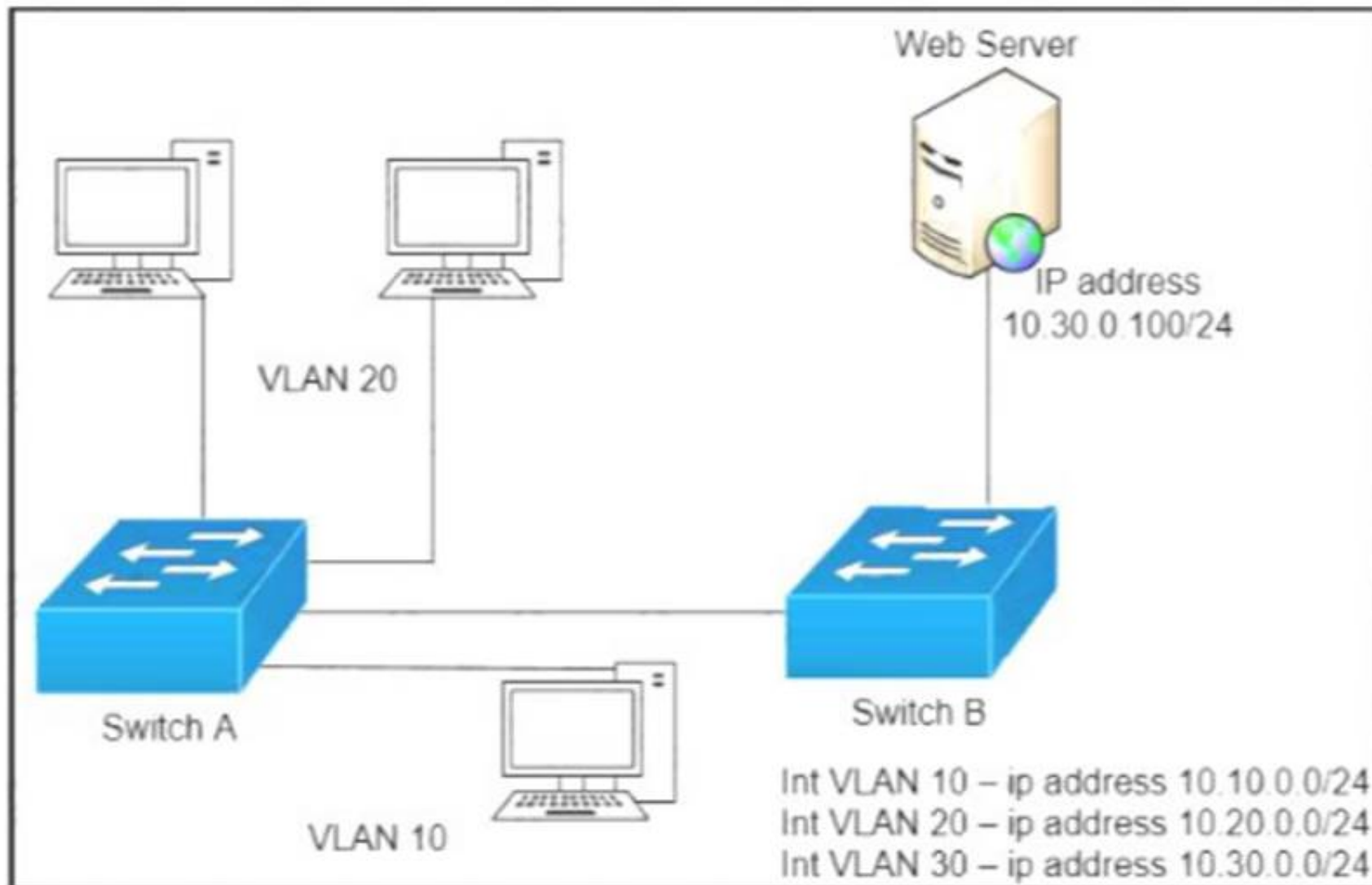
An engineer is bringing up a new circuit to the MPLS provider on the Gi0/1 interface of Router1. The new circuit uses eBGP and teams the route to VLAN25 from the BGP path. What is the expected behavior for the traffic flow for route 10.10.13.0/25?

- A. Traffic to 10.10.13.0/25 is load balanced out of multiple interfaces
- B. Route 10.10.13.0/25 is updated in the routing table as being learned from interface Gi0/1.
- C. Traffic to 10.10.13.0/25 is asymmetrical
- D. Route 10.10.13.0/25 learned via the Gi0/0 interface remains in the routing table

**Answer:** D

#### NEW QUESTION 33

Refer to the exhibit.



A network engineer must block access for all computers on VLAN 20 to the web server via HTTP. All other computers must be able to access the web server. Which configuration when applied to switch A accomplishes this task?

- ☐

```
config t
ip access-list extended wwwblock
deny tcp any host 10.30.0.100 eq 80
int vlan 10
ip access-group wwwblock in
```
- ☐

```
config t
ip access-list extended wwwblock
deny tcp any host 10.30.0.100 eq 80
permit ip any any
int vlan 20
ip access-group wwwblock in
```
- ☐

```
config t
ip access-list extended wwwblock
permit ip any any
deny tcp any host 10.30.0.100 eq 80
int vlan 30
ip access-group wwwblock in
```
- ☐

```
config t
ip access-list extended wwwblock
permit ip any any
deny tcp any host 10.30.0.100 eq 80
int vlan 20
ip access-group wwwblock in
```

- A. Option A
- B. Option B
- C. Option C
- D. Option D

**Answer: B**

#### NEW QUESTION 36

Which feature on the Cisco Wireless LAN Controller when enabled restricts management access from specific networks?

- A. CPUACL
- B. TACACS
- C. Flex ACL
- D. RADIUS

**Answer: B**

**NEW QUESTION 37**

An organization has decided to start using cloud-provided services. Which cloud service allows the organization to install its own operating system on a virtual machine?

- A. platform-as-a-service
- B. software-as-a-service
- C. network-as-a-service
- D. infrastructure-as-a-service

**Answer:** D

**NEW QUESTION 39**

Which command automatically generates an IPv6 address from a specified IPv6 prefix and MAC address of an interface?

- A. ipv6 address dhcp
- B. ipv6 address 2001:DB8:5:112::/64 eui-64
- C. ipv6 address autoconfig
- D. ipv6 address 2001:DB8:5:112::2/64 link-local

**Answer:** C

**NEW QUESTION 40**

Refer to the exhibit.

**Router#**

**Capability Codes: R - Router, T - Trans Bridge, B - Source Route Bridge  
S - Switch, H - Host, I - IGMP, r - Repeater, P - Phone,  
D - Remote, C - CVTA, M - Two-port Mac Relay**

Device ID	Local Intrfce	Holdtme	Capability	Platform	Port ID
10.1.1.2	Gig 37/3	176	R I	CPT 600	Gig 36/41
10.1.1.2	Gig 37/1	174	R I	CPT 600	Gig 36/43
10.1.1.2	Gig 36/41	134	R I	CPT 600	Gig 37/3
10.1.1.2	Gig 36/43	134	R I	CPT 600	Gig 37/1
10.1.1.2	Ten 3/2	132	R I	CPT 600	Ten 4/2
10.1.1.2	Ten 4/2	174	R I	CPT 600	Ten 3/2

Which command provides this output?

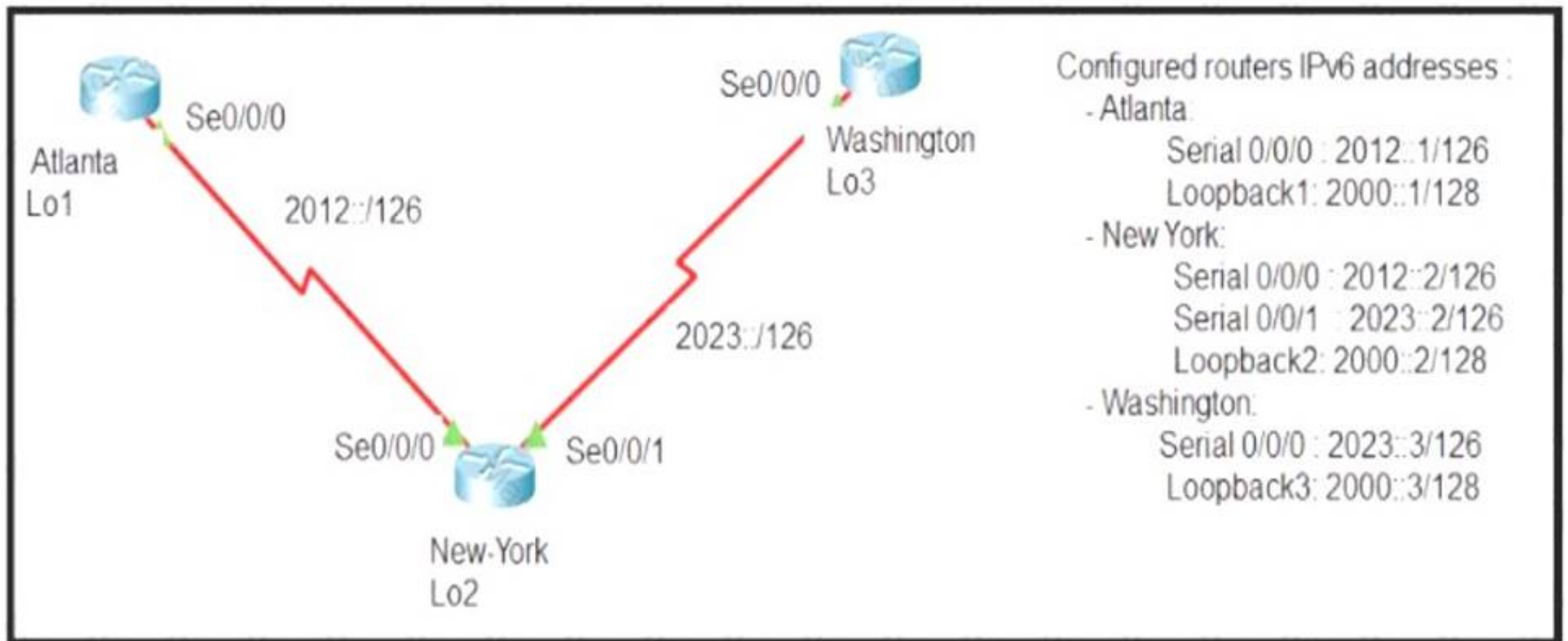
- A. show ip route
- B. show ip interface
- C. show interface
- D. show cdp neighbor

**Answer:** D

**NEW QUESTION 45**

Refer to the exhibit.





The New York router is configured with static routes pointing to the Atlanta and Washington sites. Which two tasks must be performed so that the Serial0/0/0 interfaces on the Atlanta and Washington routers can reach one another? (Choose two.)

- A. Configure the ipv6 route 2012::/126 2023::1 command on the Washington router
- B. Configure the ipv6 route 2023::/126 2012::1 command on the Atlanta router.
- C. Configure the Ipv6 route 2012::/126 s0/0/0 command on the Atlanta router
- D. Configure the ipv6 route 2023::/126 2012::2 command on the Atlanta router
- E. Configure the ipv6 route 2012::/126 2023::2 command on the Washington router

**Answer:** CE

#### NEW QUESTION 49

Which result occurs when PortFast is enabled on an interface that is connected to another switch?

- A. Spanning tree may fail to detect a switching loop in the network that causes broadcast storms
- B. VTP is allowed to propagate VLAN configuration information from switch to switch automatically.
- C. Root port choice and spanning tree recalculation are accelerated when a switch link goes down
- D. After spanning tree converges PortFast shuts down any port that receives BPDUs.

**Answer:** A

#### NEW QUESTION 53

When a floating static route is configured, which action ensures that the backup route is used when the primary route fails?

- A. The floating static route must have a higher administrative distance than the primary route so it is used as a backup
- B. The administrative distance must be higher on the primary route so that the backup route becomes secondary.
- C. The floating static route must have a lower administrative distance than the primary route so it is used as a backup
- D. The default-information originate command must be configured for the route to be installed into the routing table

**Answer:** A

#### NEW QUESTION 57

Refer to the exhibit.

R1#show ip interface brief					
Interface	IP-Address	OK?	Method	Status	Protocol
FastEthernet0/0	unassigned	YES	NVRAM	administratively down	down
GigabitEthernet1/0	192.168.0.1	YES	NVRAM	up	up
GigabitEthernet2/0	10.10.1.10	YES	manual	up	up
GigabitEthernet3/0	10.10.10.20	YES	manual	up	up
GigabitEthernet4/0	unassigned	YES	NVRAM	administratively down	down
Loopback0	172.16.15.10	YES	manual		

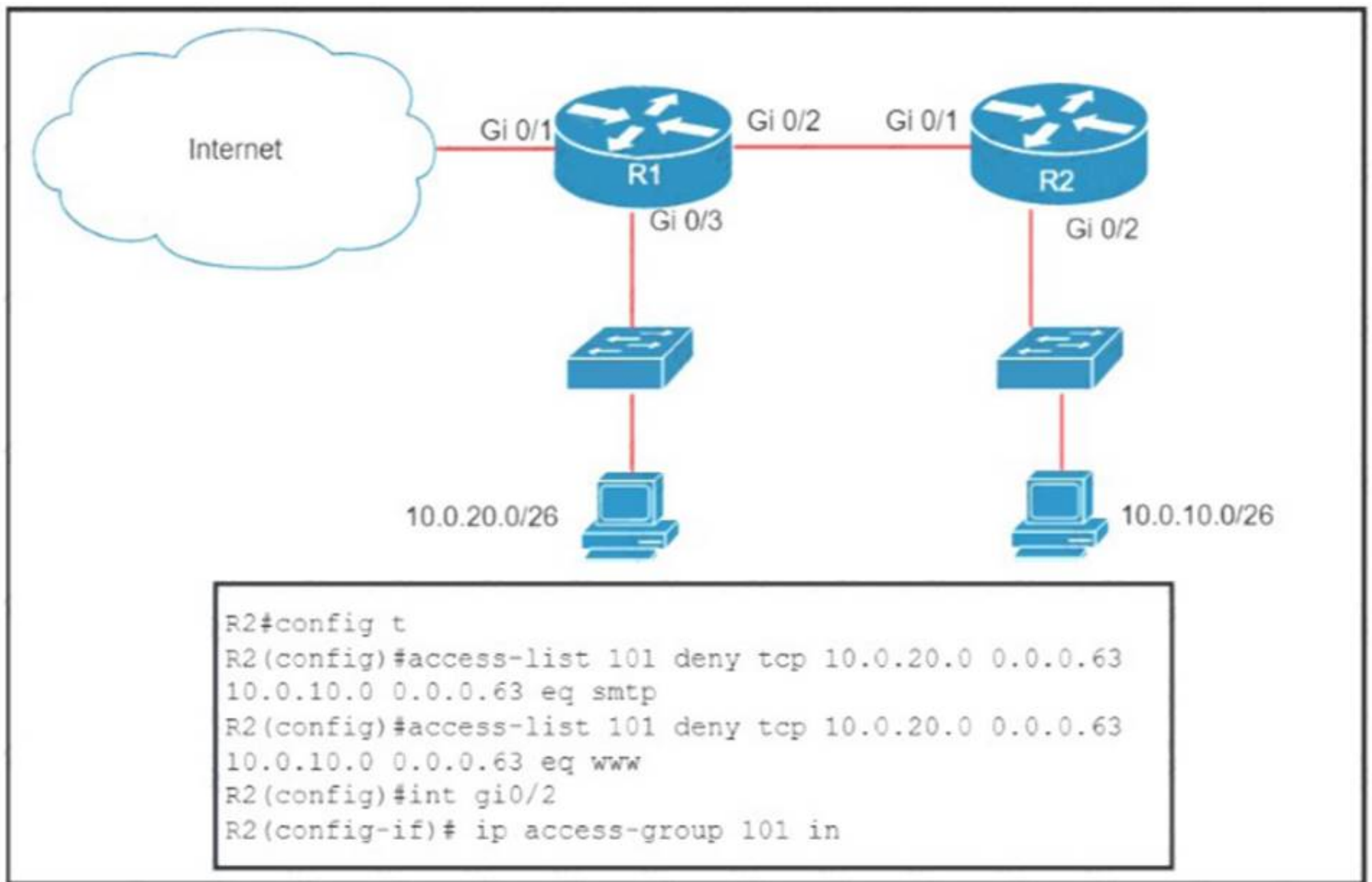
What does router R1 use as its OSPF router-ID?

- A. 10.10.1.10
- B. 10.10.10.20
- C. 172.16.15.10
- D. 192.168.0.1

**Answer:** B

## NEW QUESTION 62

Refer to the exhibit.



An extended ACL has been configured and applied to router R2. The configuration failed to work as intended. Which two changes stop outbound traffic on TCP ports 25 and 80 to 10.0.20.0/26 from the 10.0.10.0/26 subnet while still allowing all other traffic? (Choose two)

- A. Add a "permit ip any any" statement to the beginning of ACL 101 for allowed traffic.
- B. Add a "permit ip any any" statement at the end of ACL 101 for allowed traffic.
- C. The source and destination IPs must be swapped in ACL 101.
- D. The ACL must be configured on the Gi0/2 interface inbound on R1.
- E. The ACL must be moved to the Gi0/1 interface outbound on R2.

**Answer:** AE

## NEW QUESTION 64

Refer to the exhibit.

```

R1# show ip route | begin gateway
Gateway of last resort is 209.165.200.246 to network 0.0.0.0
S* 0.0.0.0/0 [1/0] via 209.165.200.246, Serial0/1/0
    is directly connected, Serial0/1/0
    172.16.0.0/16 is variably subnetted, 3 subnets, 3 masks
S   172.16.0.0/24 [1/0] via 207.165.200.250, Serial0/0/0
O   172.16.0.128/25 [110/38443] via 207.165.200.254, 00:00:23, Serial0/0/1
D   172.16.0.192/29 [90/3184439] via 207.165.200.254, 00:00:25, Serial0/0/1
    209.165.200.0/24 is variably subnetted, 4 subnets, 2 masks
C   209.165.200.248/30 is directly connected, Serial0/0/0
L   209.165.200.249/32 is directly connected, Serial0/0/0
C   209.165.200.252/30 is directly connected, Serial0/0/1
L   209.165.200.253/32 is directly connected, Serial0/0/1
  
```

With which metric was the route to host 172.16.0.202 learned?

- A. 110
- B. 38443
- C. 3184439

**Answer:** C

## NEW QUESTION 65

.....

## Thank You for Trying Our Product

\* 100% Pass or Money Back

All our products come with a 90-day Money Back Guarantee.

\* One year free update

You can enjoy free update one year. 24x7 online support.

\* Trusted by Millions

We currently serve more than 30,000,000 customers.

\* Shop Securely

All transactions are protected by VeriSign!

**100% Pass Your 200-301 Exam with Our Prep Materials Via below:**

<https://www.certleader.com/200-301-dumps.html>