

PMI

Exam Questions PMI-100

CAPM (Certified Associate in Project Management) Exam



NEW QUESTION 1

- (Topic 1)

The process of confirming human resource availability and obtaining the team necessary to complete project activities is known as:

- A. Plan Human Resource Management.
- B. Acquire Project Team.
- C. Manage Project Team.
- D. Develop Project Team.

Answer: B

NEW QUESTION 2

- (Topic 1)

The basis of identification for current or potential problems to support later claims or new procurements is provided by:

- A. A risk urgency assessment.
- B. The scope baseline.
- C. Work performance information.
- D. Procurement audits.

Answer: C

NEW QUESTION 3

- (Topic 1)

An input to the Identify Stakeholders process is:

- A. The project management plan.
- B. The stakeholder register.
- C. Procurement documents.
- D. Stakeholder analysis.

Answer: C

NEW QUESTION 4

- (Topic 1)

Which process identifies whether the needs of a project can best be met by acquiring products, services, or results outside of the organization?

- A. Plan Procurement Management
- B. Control Procurements
- C. Collect Requirements
- D. Plan Cost Management

Answer: A

NEW QUESTION 5

- (Topic 1)

Which process develops options and actions to enhance opportunities and reduce threats to project objectives?

- A. Identify Risks
- B. Control Risks
- C. Plan Risk Management
- D. Plan Risk Responses

Answer: D

NEW QUESTION 6

- (Topic 1)

What is the schedule performance index (SPI) if the planned value (PV) is \$100, the actual cost (AC) is \$150, and the earned value (EV) is \$50?

- A. 0.50
- B. 0.67
- C. 1.50
- D. 2.00

Answer: A

NEW QUESTION 7

- (Topic 1)

An element of the project scope statement is:

- A. Acceptance criteria.
- B. A stakeholder list.
- C. A summary budget,
- D. High-level risks.

Answer: A

NEW QUESTION 8

- (Topic 1)

Which quality management and control tool is useful in visualizing parent-to-child relationships in any decomposition hierarchy that uses a systematic set of rules that define a nesting relationship?

- A. Interrelationship digraphs
- B. Tree diagram
- C. Affinity diagram
- D. Network diagram

Answer: B

NEW QUESTION 9

- (Topic 1)

Regression analysis, failure mode and effect analysis (FMEA), fault tree analysis (FTA), and trend analysis are examples of which tool or technique?

- A. Expert judgment
- B. Forecasting methods
- C. Earned value management
- D. Analytical techniques

Answer: D

NEW QUESTION 10

- (Topic 1)

Units of measure, level of precision, level of accuracy, control thresholds, and rules of performance measurement are examples of items that are established in the:

- A. Cost management plan.
- B. Work performance information.
- C. Quality management plan.
- D. Work breakdown structure.

Answer: A

NEW QUESTION 10

- (Topic 1)

Which type of dependency is legally or contractually required or inherent in the nature of work and often involves physical limitations?

- A. Mandatory
- B. Discretionary
- C. Internal
- D. External

Answer: A

NEW QUESTION 11

- (Topic 1)

An input to the Plan Cost Management process is:

- A. Cost estimates.
- B. Resource calendars,
- C. The project charter,
- D. The risk register.

Answer: C

NEW QUESTION 14

- (Topic 1)

The planned work contained in the lowest level of work breakdown structure (WBS) components is known as:

- A. Work packages.
- B. Accepted deliverables.
- C. The WBS dictionary.
- D. The scope baseline.

Answer: A

NEW QUESTION 15

- (Topic 1)

The business needs, assumptions, and constraints and the understanding of the customers needs and high-level requirements are documented in the:

- A. Project management plan.

- B. Project charter.
- C. Work breakdown structure.
- D. Stakeholder register.

Answer: B

NEW QUESTION 18

- (Topic 1)

Which Collect Requirements output links the product requirements to the deliverables that satisfy them?

- A. Requirements documentation
- B. Requirements traceability matrix
- C. Project management plan updates
- D. Project documents updates

Answer: B

NEW QUESTION 19

- (Topic 1)

A reward can only be effective if it is:

- A. Given immediately after the project is completed.
- B. Something that is tangible.
- C. Formally given during project performance appraisals.
- D. Satisfying a need valued by the individual.

Answer: D

NEW QUESTION 24

- (Topic 1)

The iterative and interactive nature of the Process Groups creates the need for the processes in which Knowledge Area?

- A. Project Communications Management
- B. Project Integration Management
- C. Project Risk Management
- D. Project Scope Management

Answer: B

NEW QUESTION 27

- (Topic 1)

Risk categorization is a tool or technique used in which process?

- A. Plan Risk Responses
- B. Plan Risk Management
- C. Perform Qualitative Risk Analysis
- D. Perform Quantitative Risk Analysis

Answer: C

NEW QUESTION 28

- (Topic 1)

An input to the Manage Project Team process is:

- A. Work performance reports.
- B. Change requests.
- C. Activity resource requirements.
- D. Enterprise environmental factors.

Answer: A

NEW QUESTION 32

- (Topic 1)

Configuration identification, configuration status accounting, and configuration verification and audit are all activities in which process?

- A. Perform Quality Assurance
- B. Direct and Manage Project Work
- C. Monitor and Control Project Work
- D. Perform Integrated Change Control

Answer: D

NEW QUESTION 33

- (Topic 1)

Enterprise environmental factors are an input to which process?

- A. Control Scope
- B. Define Scope
- C. Plan Scope Management
- D. Collect Requirements

Answer: C

NEW QUESTION 36

- (Topic 1)

Which tool or technique is used to develop the human resource management plan?

- A. Ground rules
- B. Expert judgment
- C. Team-building activities
- D. Interpersonal skills

Answer: B

NEW QUESTION 39

- (Topic 1)

A regression line is used to estimate:

- A. Whether or not a process is stable or has predictable performance.
- B. How a change to the independent variable influences the value of the dependent variable.
- C. The upper and lower specification limits on a control chart.
- D. The central tendency, dispersion, and shape of a statistical distribution.

Answer: B

NEW QUESTION 44

- (Topic 1)

An output of the Validate Scope process is:

- A. A requirements traceability matrix.
- B. The scope management plan.
- C. Work performance reports.
- D. Change requests.

Answer: D

NEW QUESTION 45

- (Topic 1)

An input to Conduct Procurements is:

- A. Independent estimates.
- B. Selected sellers.
- C. Seller proposals.
- D. Resource calendars.

Answer: C

NEW QUESTION 46

- (Topic 1)

Identify Risks is part of which Process Group?

- A. Planning
- B. Executing
- C. Closing
- D. Initiating

Answer: A

NEW QUESTION 49

- (Topic 1)

The process of prioritizing risks for further analysis or action is known as:

- A. Plan Risk Management.
- B. Plan Risk Responses.
- C. Perform Qualitative Risk Analysis.
- D. Perform Quantitative Risk Analysis.

Answer: C

NEW QUESTION 53

- (Topic 1)

Which input to the Manage Stakeholder Engagement process provides guidance on how stakeholders can best be involved in a project?

- A. Feedback analysis
- B. Stakeholder analysis
- C. Communication management plan
- D. Stakeholder management plan

Answer: D

NEW QUESTION 55

- (Topic 1)

An input to the Plan Procurement Management process is:

- A. Source selection criteria.
- B. Market research.
- C. A stakeholder register.
- D. A records management system.

Answer: C

NEW QUESTION 57

- (Topic 1)

An output of the Plan Quality Management process is:

- A. A process improvement plan,
- B. Quality control measurements.
- C. Work performance information,
- D. The project management plan.

Answer: A

NEW QUESTION 60

- (Topic 1)

Which type of project management office (PMO) supplies templates, best practices, and training to project teams?

- A. Supportive
- B. Directive
- C. Controlling
- D. Instructive

Answer: A

NEW QUESTION 64

- (Topic 1)

A project manager builds consensus and overcomes obstacles by employing which communication technique?

- A. Listening
- B. Facilitation
- C. Meeting management
- D. Presentation

Answer: B

NEW QUESTION 67

- (Topic 1)

Which document defines how a project is executed, monitored and controlled, and closed?

- A. Strategic plan
- B. Project charter
- C. Project management plan
- D. Service level agreement

Answer: C

NEW QUESTION 71

- (Topic 1)

Which tool or technique is used in the Perform Integrated Change Control process?

- A. Decomposition
- B. Modeling techniques
- C. Resource optimization
- D. Meetings

Answer: D

NEW QUESTION 74

- (Topic 1)

Status of deliverables, implementation status for change requests, and forecasted estimates to complete are examples of:

- A. Earned value management.
- B. Enterprise environmental factors.
- C. Organizational process assets.
- D. Work performance information.

Answer: D

NEW QUESTION 76

- (Topic 1)

A large portion of a projects budget is typically expended on the processes in which Process Group?

- A. Executing
- B. Planning
- C. Monitoring and Controlling
- D. Closing

Answer: B

NEW QUESTION 79

- (Topic 1)

Which input to the Identify Stakeholders process provides information about internal or external parties related to the project?

- A. Procurement documents
- B. Communications plan
- C. Project charter
- D. Stakeholder register

Answer: C

NEW QUESTION 82

- (Topic 1)

Which Plan Schedule Management tool or technique may involve choosing strategic options to estimate and schedule the project?

- A. Facilitation techniques
- B. Expert judgment
- C. Analytical techniques
- D. Variance analysis

Answer: C

NEW QUESTION 84

- (Topic 1)

The Perform Quality Assurance process occurs in which Process Group?

- A. Executing
- B. Monitoring and Controlling
- C. Initiating
- D. Planning

Answer: A

NEW QUESTION 86

- (Topic 1)

Change requests are processed for review and disposition according to which process?

- A. Control Quality
- B. Control Scope
- C. Monitor and Control Project Work
- D. Perform Integrated Change Control

Answer: D

NEW QUESTION 89

- (Topic 1)

A tool or technique used in the Control Procurements process is:

- A. Expert judgment.
- B. Performance reporting.
- C. Bidder conferences.
- D. Reserve analysis.

Answer: B

NEW QUESTION 93

- (Topic 1)

Inputs to the Plan Schedule Management process include:

- A. Organizational process assets and the project charter,
- B. Enterprise environmental factors and schedule tools.
- C. Time tables and Pareto diagrams.
- D. Activity attributes and resource calendars.

Answer: A

NEW QUESTION 96

- (Topic 1)

A temporary endeavor that creates a unique product or service is called a:

- A. Project
- B. Plan
- C. Program
- D. Portfolio

Answer: A

NEW QUESTION 97

- (Topic 1)

The Monitoring and Controlling Process Group includes processes that:

- A. Establish the scope, objectives, and course of action of a project,
- B. Define a new project or a new phase of an existing project.
- C. Track, review, and regulate the progress and performance of a project.
- D. Complete the work defined in the project management plan.

Answer: C

NEW QUESTION 98

- (Topic 1)

An input used in developing the communications management plan is:

- A. Communication models.
- B. Enterprise environmental factors.
- C. Organizational communications,
- D. Organizational cultures and styles.

Answer: B

NEW QUESTION 101

- (Topic 1)

A technique used to determine the cause and degree of difference between baseline and actual performance is:

- A. Product analysis.
- B. Variance analysis.
- C. Document analysis,
- D. Decomposition.

Answer: B

NEW QUESTION 104

- (Topic 1)

Which document describes the necessary information to determine if a project is worth the required investment?

- A. Cost baseline
- B. Service level agreement
- C. Memorandum of understanding
- D. Business case

Answer: D

NEW QUESTION 106

- (Topic 1)

An effective technique for resolving conflict that incorporates multiple viewpoints from differing perspectives to achieve consensus and commitment is:

- A. smooth/accommodate.
- B. force/direct,
- C. collaborate/problem solve,
- D. compromise/reconcile.

Answer: C

NEW QUESTION 109

- (Topic 1)

Which grid shows which resources are tied to work packages?

- A. Work breakdown structure (WBS)
- B. Responsibility assignment matrix (RAM)
- C. Project assignment chart
- D. Personnel assignment matrix

Answer: B

NEW QUESTION 114

- (Topic 1)

Which process involves monitoring the status of the project to update the project costs and managing changes to the cost baseline?

- A. Estimate Costs
- B. Control Costs
- C. Determine Budget
- D. Plan Cost Management

Answer: B

NEW QUESTION 117

- (Topic 1)

An input to the Plan Stakeholder Management process is:

- A. The project charter.
- B. The stakeholder analysis.
- C. A communication management plan.
- D. A stakeholder register.

Answer: D

NEW QUESTION 120

- (Topic 1)

Which item is an example of personnel assessment?

- A. Resource calendar
- B. Tight matrix
- C. Team-building activity
- D. Focus group

Answer: D

NEW QUESTION 124

- (Topic 1)

Which basic quality tool is most useful when gathering attributes data in an inspection to identify defects?

- A. Control charts
- B. Pareto diagrams
- C. Ishikavva diagrams
- D. Checksheets

Answer: D

NEW QUESTION 125

- (Topic 1)

Which input to the Manage Stakeholder Engagement process is used to document changes that occur during the project?

- A. Issue log
- B. Change log
- C. Expert judgment
- D. Change requests

Answer: B

NEW QUESTION 128

- (Topic 1)

An output of the Direct and Manage Project Work process is:

- A. Deliverables.
- B. Activity lists.
- C. A work breakdown structure.
- D. A scope statement.

Answer:

A

NEW QUESTION 129

- (Topic 1)

Which conflict resolution technique searches for solutions that bring some degree of satisfaction to all parties in order to temporarily or partially resolve the conflict?

- A. Force/direct
- B. Withdraw/avoid
- C. Compromise/reconcile
- D. Collaborate/problem solve

Answer: C

NEW QUESTION 134

- (Topic 1)

Which risk management strategy seeks to eliminate the uncertainty associated with a particular upside risk by ensuring that the opportunity is realized?

- A. Enhance
- B. Share
- C. Exploit
- D. Accept

Answer: C

NEW QUESTION 139

- (Topic 1)

The ways in which the roles and responsibilities, reporting relationships, and staffing management will be addressed and structured within a project is described in the:

- A. Human resource management plan.
- B. Activity resource requirements.
- C. Personnel assessment tools,
- D. Multi-criteria decision analysis.

Answer: A

NEW QUESTION 143

- (Topic 1)

Which Process Group and Knowledge Area include the Sequence Activities process?

- A. Executing Process Group and Project Time Management
- B. Executing Process Group and Project Cost Management
- C. Planning Process Group and Project Time Management
- D. Planning Process Group and Project Cost Management

Answer: C

NEW QUESTION 145

- (Topic 1)

Which cost is associated with nonconformance?

- A. Liabilities
- B. Inspections
- C. Training
- D. Equipment

Answer: A

NEW QUESTION 150

- (Topic 2)

Project management processes ensure the:

- A. alignment with organizational strategy
- B. efficient means to achieve the project objectives
- C. performance of the project team
- D. effective flow of the project throughout its life cycle

Answer: D

NEW QUESTION 152

- (Topic 2)

A disadvantage associated with virtual teams is that they:

- A. Require communication technology that is not readily available.
- B. Create difficulties when including people with disabilities.
- C. Often cannot accommodate teams that work different hours or shifts.

D. Create the possibility for misunderstandings to arise.

Answer: D

NEW QUESTION 157

- (Topic 2)

The degree, amount, or volume of risk that an organization or individual will withstand is known as its risk:

- A. Analysis
- B. Appetite
- C. Tolerance
- D. Response

Answer: C

NEW QUESTION 158

- (Topic 2)

Stakeholders can be identified in later stages of the project because the Identify Stakeholders process should be:

- A. Continuous
- B. Discrete
- C. Regulated
- D. Arbitrary

Answer: A

NEW QUESTION 159

- (Topic 2)

Skills necessary for project management such as motivating to provide encouragement; listening actively; persuading a team to perform an action; and summarizing, recapping, and identifying next steps are known as:

- A. organizational skills
- B. technical skills
- C. communication skills
- D. hard skills

Answer: C

NEW QUESTION 160

- (Topic 2)

Which type of graphic is displayed below?



- A. Work breakdown structure
- B. Context diagram
- C. Control chart
- D. Pareto diagram

Answer: A

NEW QUESTION 165

- (Topic 2)

Which is an enterprise environmental factor?

- A. Marketplace conditions
- B. Policies and procedures
- C. Project files from previous projects
- D. Lessons learned from previous projects

Answer: A

NEW QUESTION 168

- (Topic 2)

Which output is the approved version of the time-phased project budget?

- A. Resource calendar
- B. Scope baseline
- C. Trend analysis
- D. Cost baseline

Answer: D

NEW QUESTION 170

- (Topic 2)

Which Control Stakeholder Engagement tool or technique allows the project manager to consolidate and facilitate distribution of reports?

- A. Information management systems
- B. Work performance reports
- C. Stakeholder analysis
- D. Data gathering and representation

Answer: A

NEW QUESTION 172

- (Topic 2)

Retreating from an actual or potential conflict or postponing the issue to be better prepared or to be resolved by others describes which of the five general techniques for managing conflict?

- A. Smooth/accommodate
- B. Withdraw/avoid
- C. Compromise/reconcile
- D. Force/direct

Answer: B

NEW QUESTION 174

- (Topic 2)

Which tool or technique is required in order to determine the project budget?

- A. Cost of quality
- B. Historical relationships
- C. Project management software
- D. Forecasting

Answer: B

NEW QUESTION 176

- (Topic 2)

Requirements documentation will typically contain at least:

- A. Stakeholder requirements, staffing requirements, and transition requirements.
- B. Business requirements, the stakeholder register, and functional requirements.
- C. Stakeholder impact, budget requirements, and communications requirements.
- D. Business objectives, stakeholder impact, and functional requirements.

Answer: D

NEW QUESTION 180

- (Topic 2)

The process of monitoring the status of the project and product scope as well as managing the changes to the scope baseline is known as:

- A. Validate Scope.
- B. Plan Scope Management.
- C. Control Scope.
- D. Define Scope.

Answer: C

NEW QUESTION 181

- (Topic 2)

When the business objectives of an organization change, project goals need to be:

- A. realigned.
- B. performed.
- C. improved.
- D. controlled.

Answer: A

NEW QUESTION 182

- (Topic 2)

Processes in the Initiating Process Group may be completed at the organizational level and be outside of the project's:

- A. Level of control.
- B. Communication channels.
- C. Scope.
- D. Strategic alignment.

Answer: A

NEW QUESTION 185

- (Topic 2)

The primary benefit of the Plan Schedule Management process is that it:

- A. provides guidance to identify time or schedule challenges within the project.
- B. tightly links processes to create a seamless project schedule.
- C. guides how the project schedule will be managed throughout the project.
- D. creates an overview of all activities broken down into manageable subsections.

Answer: C

NEW QUESTION 187

- (Topic 2)

When closing a project or phase, part of the process may require the use of which type of analysis?

- A. Reserve analysis
- B. Regression analysis
- C. Document analysis
- D. Product analysis

Answer: B

NEW QUESTION 192

- (Topic 2)

High-level project risks are included in which document?

- A. Business case
- B. Risk breakdown structure
- C. Project charter
- D. Risk register

Answer: C

NEW QUESTION 194

- (Topic 2)

Which items are components of a project management plan?

- A. Change management plan, process improvement plan, and scope management plan
- B. Agreements, procurement management plan, and work performance information
- C. Schedule management plan, project schedule, and resource calendars
- D. Scope baseline, project statement of work, and requirements traceability matrix

Answer: A

NEW QUESTION 198

- (Topic 2)

Project managers who lead by example and follow through on the commitments they make demonstrate the key interpersonal skill of:

- A. influencing
- B. leadership
- C. motivation
- D. coaching

Answer: A

NEW QUESTION 203

- (Topic 2)

Which element does a project charter contain?

- A. Management reserves
- B. Work breakdown structure
- C. Stakeholder list
- D. Stakeholder register

Answer: C

NEW QUESTION 207

- (Topic 2)

Power, urgency, and legitimacy are attributes of which stakeholder classification model?

- A. Salience
- B. Influence/impact
- C. Power/interest
- D. Power/influence

Answer: A

NEW QUESTION 208

- (Topic 2)

Success is measured by benefits realization for a:

- A. strategic plan
- B. project
- C. portfolio
- D. program

Answer: C

NEW QUESTION 210

- (Topic 2)

Which change request is an intentional activity that realigns the performance of the project work with the project management plan?

- A. Update
- B. Preventive action
- C. Defect repair
- D. Corrective action

Answer: D

NEW QUESTION 213

- (Topic 2)

The following chart contains information about the tasks in a project.

Task	PV	AC	EV
1	10,000	10,000	10,000
2	10,000	8,000	10,000
3	10,000	8,000	8,000
4	9,000	12,000	10,000
5	10,000	12,000	12,000
6	10,000	10,000	12,000
7	12,000	12,000	10,000
8	10,000	8,000	9,000
9	12,000	10,000	11,000

Based on the chart, what is the schedule variance (SV) for Task 8?

- A. -2,000
- B. -1,000
- C. 1,000
- D. 2,000

Answer: B

NEW QUESTION 217

- (Topic 2)

Which action is included in the Control Costs process?

- A. Identify how the project costs will be planned, structured, and controlled
- B. Determine policies, objectives, and responsibilities to satisfy stakeholder needs
- C. Develop an approximation of the monetary resources needed to complete project activities
- D. Monitor cost performance to isolate and understand variances from the approved cost baseline

Answer: D

NEW QUESTION 222

- (Topic 2)

An example of a group decision-making technique is:

- A. nominal group technique
- B. majority
- C. affinity diagram
- D. multi-criteria decision analysis

Answer: B

NEW QUESTION 223

- (Topic 2)
When a project is undertaken to reduce defects in a product or service, the objective of the project is to create a/an:

- A. improvement
- B. program
- C. result
- D. portfolio

Answer: A

NEW QUESTION 226

- (Topic 2)
While processes in the Planning Process Group seek to collect feedback and define project documents to guide project work, organizational procedures dictate when the project planning:

- A. ends.
- B. begins.
- C. delays.
- D. deviates.

Answer: A

NEW QUESTION 230

- (Topic 2)
Which project risk listed in the table below is most likely to occur?

Project Risks	Probability	Impact
Risk 1	L	M
Risk 2	H	H
Risk 3	L	L
Risk 4	M	L

- A. 1
- B. 2
- C. 3
- D. 4

Answer: B

NEW QUESTION 233

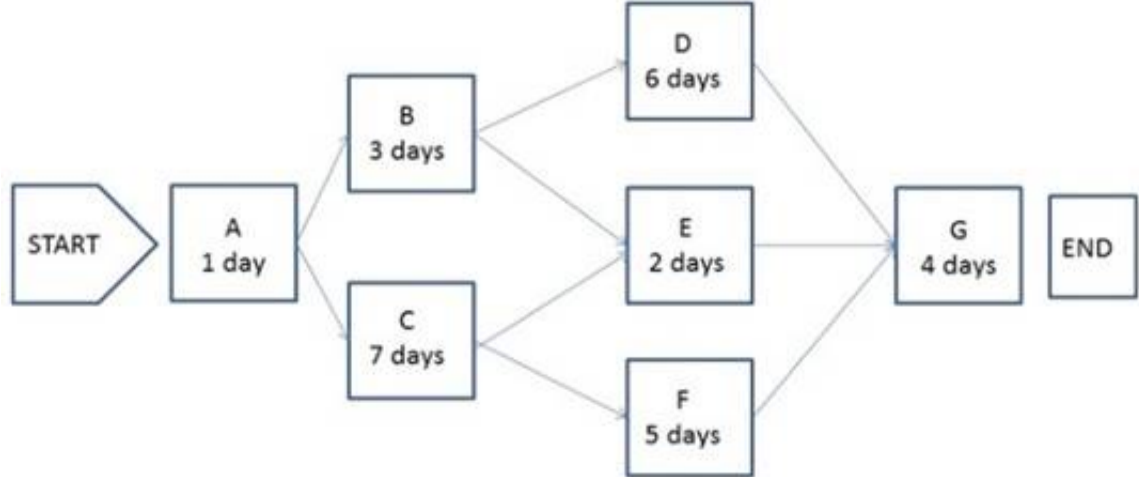
- (Topic 2)
Which process is conducted from project inception through completion and is ultimately the responsibility of the project manager?

- A. Control Quality
- B. Monitor and Control Project Work
- C. Control Scope
- D. Perform Integrated Change Control

Answer: D

NEW QUESTION 238

- (Topic 2)
The following is a network diagram for a project.



What is the critical path for the project?

- A. A-B-D-G
- B. A-B-E-G
- C. A-C-F-G
- D. A-C-E-G

Answer: C

NEW QUESTION 241

- (Topic 2)

A project manager should communicate to stakeholders about resolved project issues by updating the:

- A. project records
- B. project reports
- C. stakeholder notifications
- D. stakeholder register

Answer: C

NEW QUESTION 246

- (Topic 2)

The component of the risk management plan that documents how risk activities will be recorded is called:

- A. tracking
- B. scoping
- C. timing
- D. defining

Answer: A

NEW QUESTION 248

- (Topic 2)

Which basic quality tool explains a change in the dependent variable in relationship to a change observed in the corresponding independent variable?

- A. Cause-and-effect diagram
- B. Histogram
- C. Control chart
- D. Scatter diagram

Answer: D

NEW QUESTION 252

- (Topic 2)

A complete set of concepts, terms, and activities that make up an area of specialization is known as:

- A. a Knowledge Area
- B. a Process Group
- C. program management
- D. portfolio management

Answer: A

NEW QUESTION 257

- (Topic 2)

Which tool or technique used in the Control Procurements process can be conducted during the execution of the project to verify compliance with deliverables?

- A. Procurement documents
- B. Inspection and audits
- C. Estimate budget
- D. Risk register

Answer: B

NEW QUESTION 260

- (Topic 2)

The cost baseline and project funding requirements are outputs of which process in Project Cost Management?

- A. Estimate Costs
- B. Control Costs
- C. Plan Cost Management
- D. Determine Budget

Answer: D

NEW QUESTION 262

- (Topic 2)

A graphic display of project team members and their reporting relationships is known as a:

- A. Resource calendar.
- B. Project organization chart.
- C. Resource breakdown structure (RBS).
- D. Responsibility assignment matrix (RAM).

Answer: B

NEW QUESTION 264

- (Topic 2)

A stakeholder expresses a need not known to the project manager. The project manager most likely missed a step in which stakeholder management process?

- A. Plan Stakeholder Management
- B. Identify Stakeholders
- C. Manage Stakeholder Engagement
- D. Control Stakeholder Engagement

Answer: A

NEW QUESTION 265

- (Topic 2)

Funding limit reconciliation is a tool and technique of which Project Cost Management process?

- A. Estimate Costs
- B. Control Costs
- C. Plan Cost Management
- D. Determine Budget

Answer: D

NEW QUESTION 270

- (Topic 2)

In which phase of team building activities do team members begin to work together and adjust their work habits and behavior to support the team?

- A. Performing
- B. Storming
- C. Norming
- D. Forming

Answer: C

NEW QUESTION 271

- (Topic 2)

The scope management plan and scope baseline are contained in:

- A. organizational process assets
- B. a requirements traceability matrix
- C. the project charter
- D. the project management plan

Answer: D

NEW QUESTION 276

- (Topic 2)

Project Stakeholder Management focuses on:

- A. project staff assignments
- B. project team acquisition
- C. managing conflicting interests
- D. communication methods

Answer: C

NEW QUESTION 277

- (Topic 2)

Which quality tool incorporates the upper and lower specification limits allowed within an agreement?

- A. Control chart
- B. Flowchart
- C. Checksheet
- D. Pareto diagram

Answer: A

NEW QUESTION 278

- (Topic 2)

A project manager who communicates to the project team through email is using which type of communication?

- A. Formal
- B. Informal
- C. Horizontal
- D. Unofficial

Answer: B

NEW QUESTION 280

- (Topic 2)

Which output of Project Cost Management consists of quantitative assessments of the probable costs required to complete project work?

- A. Activity cost estimates
- B. Earned value management
- C. Cost management plan
- D. Cost baseline

Answer: A

NEW QUESTION 281

- (Topic 2)

A project team member agrees to change a project deliverable after a conversation with an external stakeholder. It is later discovered that the change has had an adverse effect on another deliverable. This could have been avoided if the project team had implemented:

- A. Quality assurance.
- B. A stakeholder management plan.
- C. Project team building.
- D. Integrated change control.

Answer: D

NEW QUESTION 282

- (Topic 2)

The scope management plan and scope baseline are contained in:

- A. organizational process assets
- B. a requirements traceability matrix
- C. the project charter
- D. the project management plan

Answer: D

NEW QUESTION 284

- (Topic 2)

The purpose of developing a project scope management plan is to:

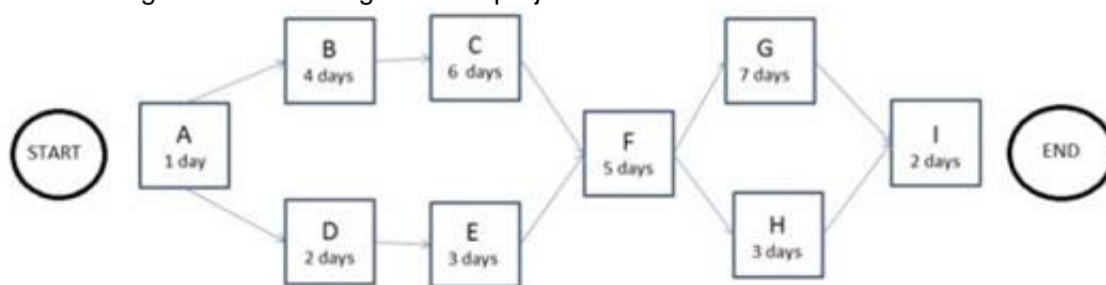
- A. Manage the timely completion of the project.
- B. Ensure that the project includes all of the work required.
- C. Make sure the project will satisfy the needs for which it was begun.
- D. Reduce the risk of negative events in the project.

Answer: B

NEW QUESTION 286

- (Topic 2)

The following is a network diagram for a project.



How many possible paths are identified for this project?

- A. 3
- B. 4
- C. 6
- D. 7

Answer: B

NEW QUESTION 288

- (Topic 2)

The following chart contains information about the tasks in a project.

Task	PV	AC	EV
1	10,000	10,000	10,000
2	10,000	8,000	10,000
3	10,000	8,000	8,000
4	9,000	12,000	10,000
5	10,000	12,000	12,000
6	10,000	10,000	12,000
7	12,000	12,000	10,000
8	10,000	8,000	9,000
9	12,000	10,000	11,000

Based on the chart, what is the cost performance index (CPI) for Task 2?

- A. 0.8
- B. 1
- C. 1.25
- D. 1.8

Answer: C

NEW QUESTION 292

- (Topic 2)

Whose approval may be required for change requests after change control board (CCB) approval?

- A. Functional managers
- B. Business partners
- C. Customers or sponsors
- D. Subject matter experts

Answer: C

NEW QUESTION 295

- (Topic 2)

Stakeholder communication requirements should be included as a component of:

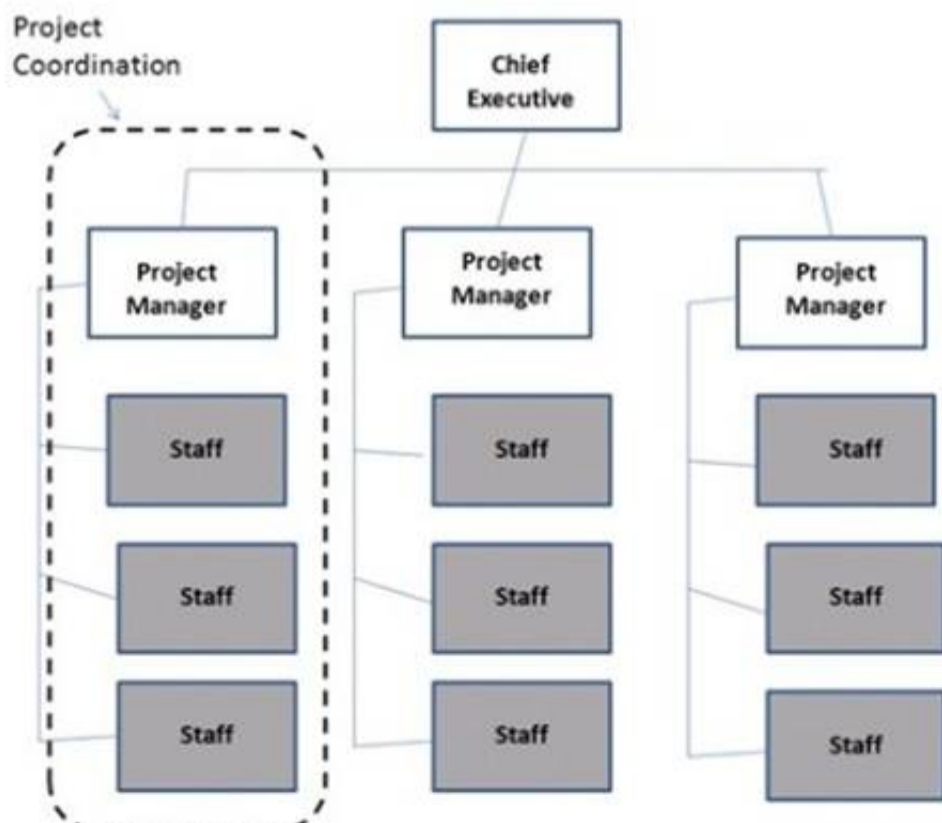
- A. enterprise environmental factors
- B. organizational process assets
- C. the project management plan
- D. the stakeholder register

Answer: C

NEW QUESTION 296

- (Topic 2)

Which type of organizational structure is displayed in the diagram provided?



- A. Balanced matrix
- B. Projectized
- C. Strong matrix
- D. Functional

Answer: B

NEW QUESTION 299

- (Topic 2)

The lowest level normally depicted in a work breakdown structure (WBS) is called a/an:

- A. work package
- B. deliverable
- C. milestone
- D. activity

Answer: A

NEW QUESTION 304

- (Topic 2)

A project team attempts to produce a deliverable and finds that they have neither the expertise nor the time to complete the deliverable in a timely manner. This issue could have been avoided if they had created and followed a:

- A. risk management plan
- B. human resource management plan
- C. scope management plan
- D. procurement management plan

Answer: D

NEW QUESTION 306

- (Topic 2)

The degree, amount, or volume of risk that an organization or individual will withstand is called risk:

- A. appetite
- B. tolerance
- C. threshold
- D. management

Answer: B

NEW QUESTION 310

- (Topic 2)

Which project document is updated in the Control Stakeholder Engagement process?

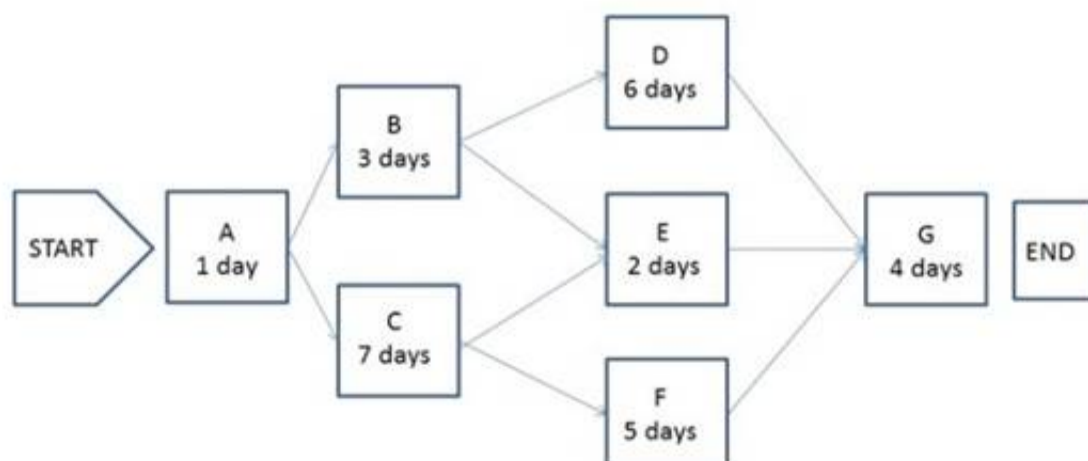
- A. Project reports
- B. Issue log
- C. Lessons learned documentation
- D. Work performance information

Answer: B

NEW QUESTION 313

- (Topic 2)

The following is a network diagram for a project.



The total float for the project is how many days?

- A. 3
- B. 5
- C. 7
- D. 9

Answer: A

NEW QUESTION 316

- (Topic 2)

Which Process Group includes the Manage Stakeholder Engagement process?

- A. Executing
- B. Planning
- C. Monitoring and Controlling
- D. Initiating

Answer: A

NEW QUESTION 320

- (Topic 2)

Analytical techniques are a tool and technique of which process in Project Procurement Management?

- A. Plan Procurement Management
- B. Control Procurements
- C. Conduct Procurements
- D. Close Procurements

Answer: C

NEW QUESTION 324

- (Topic 2)

Impacts to other organizational areas, levels of service, and acceptance criteria are typical components of which document?

- A. Business case
- B. Work breakdown structure
- C. Requirements documentation
- D. Risk register

Answer: C

NEW QUESTION 326

- (Topic 2)

Which stakeholder approves a project's result?

- A. Customer
- B. Sponsor
- C. Seller
- D. Functional manager

Answer: A

NEW QUESTION 327

- (Topic 2)

The risk response strategy in which the project team acts to reduce the probability of occurrence or impact of a risk is known as:

- A. exploit
- B. avoid
- C. mitigate
- D. share

Answer: C

NEW QUESTION 331

- (Topic 2)

At the start of a typical project life cycle, costs are:

- A. low, peak as work is carried out, and drop as the project nears the end.
- B. low, become steady as work is carried out, and increase as the project nears the end.
- C. high, drop as work is carried out, and increase as the project nears the end.
- D. high, become low as work is carried out, and drop as the project nears the end.

Answer: A

NEW QUESTION 332

- (Topic 3)

The Verify Scope process is primarily concerned with:

- A. formalizing acceptance of the completed project deliverables.
- B. accuracy of the work deliverables.
- C. formalizing approval of the scope statement.
- D. accuracy of the work breakdown structure (WBS).

Answer:

A

NEW QUESTION 333

- (Topic 3)

Which process involves documenting the actions necessary to define, prepare, integrate, and coordinate all subsidiary plans?

- A. Collect Requirements
- B. Direct and Manage Project Execution
- C. Monitor and Control Project Work
- D. Develop Project Management Plan

Answer: D

NEW QUESTION 334

- (Topic 3)

Which process includes prioritizing risks for subsequent further analysis or action by assessing and combining their probability of occurrence and impact?

- A. Perform Qualitative Risk Analysis
- B. Perform Quantitative Risk Analysis
- C. Plan Risk Management
- D. Plan Risk Responses

Answer: A

NEW QUESTION 338

- (Topic 3)

Information collected on the status of project activities being performed to accomplish the project work is known as what?

- A. Project management information system
- B. Work performance information
- C. Work breakdown structure
- D. Variance analysis

Answer: B

NEW QUESTION 340

- (Topic 3)

Which of the following is TRUE about most project life cycles?

- A. Staffing level is highest at the start.
- B. The stakeholders' influence is highest at the start.
- C. The level of uncertainty is lowest at the start.
- D. The cost of changes is highest at the start.

Answer: B

NEW QUESTION 342

- (Topic 3)

Projects can be divided into phases to provide better management control. Collectively, what are these phases known as?

- A. Complete project phase
- B. Project life
- C. The project life cycle
- D. Project cycle

Answer: C

NEW QUESTION 343

- (Topic 3)

An input to the Create WBS process is a:

- A. project charter.
- B. stakeholder register.
- C. project scope statement.
- D. requirements traceability matrix.

Answer: C

NEW QUESTION 344

- (Topic 3)

Which tool is used to develop technical details within the project management plan?

- A. Expert judgment
- B. Project management methodology
- C. Project management information system (PMIS)
- D. Project selection methods

Answer: A

NEW QUESTION 345

- (Topic 3)

Which of the following techniques is used during Control Scope?

- A. Cost-benefit analysis
- B. Variance analysis
- C. Reserve analysis
- D. Stakeholder analysis

Answer: B

NEW QUESTION 347

- (Topic 3)

Which schedule compression technique has phases or activities done in parallel that would normally have been done sequentially?

- A. Crashing
- B. Fast tracking
- C. Leads and lags adjustment
- D. Parallel task development

Answer: B

NEW QUESTION 351

- (Topic 3)

The project manager notes that stakeholders are aware of the project and potential impacts and are actively engaged in ensuring that the project is a success. The engagement level of the stakeholders should be classified as:

- A. Supportive
- B. Leading
- C. Neutral
- D. Resistant

Answer: B

NEW QUESTION 355

- (Topic 3)

In an organization with a projectized organizational structure, who controls the project budget?

- A. Functional manager
- B. Project manager
- C. Program manager
- D. Project management office

Answer: B

NEW QUESTION 357

- (Topic 3)

What is the name of a graphic display of project team members and their reporting relationships?

- A. Role dependencies chart
- B. Reporting flow diagram
- C. Project organization chart
- D. Project team structure diagram

Answer: C

NEW QUESTION 359

- (Topic 3)

As part of a mid-project evaluation, the project sponsor has asked for a forecast of the total project cost. What should be used to calculate the forecast?

- A. BAC
- B. EAC
- C. ETC
- D. WBS

Answer: B

NEW QUESTION 364

- (Topic 3)

Which action should a project manager take to ensure that the project management plan is effective and current?

- A. Conduct periodic project performance reviews.
- B. Identify quality project standards.

- C. Follow ISO 9000 quality standards.
- D. Complete the quality control checklist.

Answer: A

NEW QUESTION 368

- (Topic 3)

If the most likely duration of an activity is five weeks, the best-case duration is two weeks, and the worst-case duration is 14 weeks, how many weeks is the expected duration of the activity?

- A. One
- B. Five
- C. Six
- D. Seven

Answer: C

NEW QUESTION 371

- (Topic 3)

What is the definition of Direct and Manage Project Execution?

- A. Integrating all planned activities
- B. Performing the activities included in the plan
- C. Developing and maintaining the plan
- D. Execution of deliverables

Answer: B

NEW QUESTION 372

- (Topic 3)

Which is one of the major outputs of Sequence Activities?

- A. Responsibility assignment matrix (RAM)
- B. Work breakdown structure (WBS) update
- C. Project schedule network diagram
- D. Mandatory dependencies list

Answer: C

NEW QUESTION 375

- (Topic 3)

At which point of the project is the uncertainty the highest and the risk of failing the greatest?

- A. Final phase of the project
- B. Start of the project
- C. End of the project
- D. Midpoint of the project

Answer: B

NEW QUESTION 377

- (Topic 3)

What tool and technique is used to determine whether work and deliverables meet requirements and product acceptance criteria?

- A. Decomposition
- B. Benchmarking
- C. Inspection
- D. Checklist analysis

Answer: C

NEW QUESTION 382

- (Topic 3)

Which group creativity technique asks a selected group of experts to answer questionnaires and provide feedback regarding the responses from each round of requirements gathering?

- A. The Delphi technique
- B. Nominal group technique
- C. Affinity diagram
- D. Brainstorming

Answer: A

NEW QUESTION 387

- (Topic 3)

An electronics firm authorizes a new project to develop a faster, cheaper, and smaller laptop after improvements in the industry and electronics technology. With which of the following strategic considerations is this project mainly concerned?

- A. Customer request
- B. Market demand
- C. Technological advance
- D. Strategic opportunity

Answer: C

NEW QUESTION 392

- (Topic 3)

Projects are undertaken by an organization to support the:

- A. Product performance.
- B. Budget process.
- C. Collective capabilities.
- D. Organizational strategy.

Answer: D

NEW QUESTION 396

- (Topic 3)

Which is the Define Scope technique used to generate different approaches to execute and perform the work of the project?

- A. Build v
- B. buy
- C. Expert judgment
- D. Alternatives identification
- E. Product analysis

Answer: C

NEW QUESTION 397

- (Topic 3)

The scope management plan is a subsidiary of which project document?

- A. Schedule management plan
- B. Project management plan
- C. Quality management plan
- D. Resource management plan

Answer: B

NEW QUESTION 398

- (Topic 3)

Which of the following is a narrative description of products, services, or results to be delivered by a project?

- A. Project statement of work
- B. Business case
- C. Accepted deliverable
- D. Work performance information

Answer: A

NEW QUESTION 400

- (Topic 3)

To which process is work performance information an input?

- A. Administer Procurements
- B. Direct and Manage Project Execution
- C. Create WBS
- D. Perform Qualitative Risk Analysis

Answer: A

NEW QUESTION 403

- (Topic 3)

Which of the following is contained within the communications management plan?

- A. An organizational chart
- B. Glossary of common terminology
- C. Organizational process assets
- D. Enterprise environmental factors

Answer: B

NEW QUESTION 405

- (Topic 3)

When is a Saliience Model used?

- A. In a work breakdown structure (WBS)
- B. During quality assurance
- C. In stakeholder analysis
- D. During quality control (QC)

Answer: C

NEW QUESTION 409

- (Topic 3)

Activity resource requirements and the resource breakdown structure (RBS) are outputs of which Project Time Management process?

- A. Control Schedule
- B. Define Activities
- C. Develop Schedule
- D. Estimate Activity Resources

Answer: D

NEW QUESTION 411

- (Topic 3)

When an activity cannot be estimated with a reasonable degree of confidence, the work within the activity is decomposed into more detail using which type of estimating?

- A. Bottom-up
- B. Parametric
- C. Analogous
- D. Three-point

Answer: A

NEW QUESTION 415

- (Topic 3)

What is the number of stakeholders, if the project has 28 potential communication channels?

- A. 7
- B. 8
- C. 14
- D. 16

Answer: B

NEW QUESTION 417

- (Topic 3)

Managing ongoing production of goods and services to ensure business continues efficiently describes which type of management?

- A. Portfolio
- B. Project
- C. Program
- D. Operations

Answer: D

NEW QUESTION 422

- (Topic 3)

Taking out insurance in relation to risk management is called what?

- A. Transference
- B. Avoidance
- C. Exploring
- D. Mitigation

Answer: A

NEW QUESTION 427

- (Topic 3)

Which type of manager is assigned by the performing organization to lead the team that is responsible for achieving the project objectives?

- A. Program
- B. Functional
- C. Project
- D. Portfolio

Answer:

C

NEW QUESTION 430

- (Topic 3)

An input required in Define Scope is an organizational:

- A. structure.
- B. process asset.
- C. matrix.
- D. breakdown structure.

Answer: B

NEW QUESTION 431

- (Topic 3)

Which Develop Schedule tool and technique produces a theoretical early start date and late start date?

- A. Critical path method
- B. Variance analysis
- C. Schedule compression
- D. Schedule comparison bar charts

Answer: A

NEW QUESTION 432

- (Topic 3)

Most experienced project managers know that:

- A. every project requires the use of all processes in the PMBOK® Guide.
- B. there is no single way to manage a project.
- C. project management techniques are risk free.
- D. there is only one way to manage projects successfully.

Answer: B

NEW QUESTION 435

- (Topic 3)

What type of reward can hurt team cohesiveness?

- A. Sole-sum
- B. Win-lose
- C. Lose-win
- D. Partial-sum

Answer: B

NEW QUESTION 439

- (Topic 3)

What is the total float of the critical path?

- A. Can be any number
- B. Zero or positive
- C. Zero or negative
- D. Depends on the calendar

Answer: C

NEW QUESTION 440

- (Topic 3)

A work package has been scheduled to cost \$1,000 to complete and was to be finished today. As of today, the actual expenditure is \$1,200 and approximately half of the work has been completed. What is the cost variance?

- A. -700
- B. -200
- C. 200
- D. 500

Answer: A

NEW QUESTION 442

- (Topic 3)

The project management processes presented in the PMBOK Guide® should:

- A. always be applied uniformly.
- B. be selected as appropriate by the sponsor.
- C. be selected as appropriate by the project team.

D. be applied based on ISO guidelines.

Answer: C

NEW QUESTION 443

- (Topic 3)

A measure of cost performance that is required to be achieved with the remaining resources in order to meet a specified management goal and is expressed as the ratio of the cost needed for finishing the outstanding work to the remaining budget is known as the:

- A. budget at completion (BAC)
- B. earned value management (EVM)
- C. to-complete performance index
- D. cost performance index

Answer: C

NEW QUESTION 448

- (Topic 3)

Which process documents the business needs of a project and the new product, service, or other result that is intended to satisfy those requirements?

- A. Develop Project Management Plan
- B. Develop Project Charter
- C. Direct and Manage Project Execution
- D. Collect Requirements

Answer: B

NEW QUESTION 451

- (Topic 3)

A procurement management plan is a subsidiary of which other type of plan?

- A. Resource plan
- B. Project management plan
- C. Cost control plan
- D. Expected monetary value plan

Answer: B

NEW QUESTION 452

- (Topic 3)

What is the term assigned to products or services having the same functional use but different technical characteristics?

- A. Scope
- B. Quality
- C. Specification
- D. Grade

Answer: D

NEW QUESTION 453

- (Topic 3)

What are the formal and informal policies, procedures, and guidelines that could impact how the project's scope is managed?

- A. Organizational process assets
- B. Enterprise environmental factors
- C. Project management processes
- D. Project scope management plan

Answer: A

NEW QUESTION 457

- (Topic 3)

What is the probability of occurrence if the risk rating is 0.56 and the impact if the risk does occur is very high (0.80)?

- A. 0.45
- B. 0.56
- C. 0.70
- D. 1.36

Answer: C

NEW QUESTION 460

- (Topic 3)

Which organizational process assets update is performed during the Close Procurements process?

- A. Procurement audit
- B. Lessons learned
- C. Performance reporting
- D. Payment requests

Answer: B

NEW QUESTION 462

- (Topic 3)

Which of the following is an enterprise environmental factor that can influence the Develop Project Charter process?

- A. Organizational standard processes
- B. Marketplace conditions
- C. Historical information
- D. Templates

Answer: B

NEW QUESTION 466

- (Topic 3)

Which Knowledge Area is concerned with the processes required to ensure timely and appropriate generation, collection, distribution, storage, retrieval, and ultimate disposition of project information?

- A. Project Integration Management
- B. Project Communications Management
- C. Project Information Management System (PIMS)
- D. Project Scope Management

Answer: B

NEW QUESTION 470

- (Topic 3)

The process of identifying and documenting the specific actions to be performed to produce the project deliverables is known as:

- A. Define Activities.
- B. Sequence Activities.
- C. Define Scope.
- D. Control Schedule.

Answer: A

NEW QUESTION 475

- (Topic 3)

Which type of managers do composite organizations involve?

- A. Functional managers and manager of project managers
- B. Functional managers only
- C. Project managers only
- D. Technical managers and project managers

Answer: A

NEW QUESTION 477

- (Topic 3)

Which of the seven basic quality tools is especially useful for gathering attributes data while performing inspections to identify defects?

- A. Histograms
- B. Scatter diagrams
- C. Flowcharts
- D. Checksheets

Answer: D

NEW QUESTION 479

- (Topic 3)

Plan Risk Management is the process of defining how to:

- A. Communicate identified risks to the project stakeholders.
- B. Conduct risk management activities for a project.
- C. Analyze the impact a specific risk may have on the project.
- D. Address unexpected risks that may occur during a project.

Answer: B

NEW QUESTION 482

- (Topic 3)

Which defines the portion of work included in a contract for items being purchased or acquired?

- A. Procurement management plan
- B. Evaluation criteria
- C. Work breakdown structure
- D. Procurement statement of work

Answer: D

NEW QUESTION 487

- (Topic 3)

Which activity is an input to the Conduct Procurements process?

- A. Organizational process assets
- B. Resource availability
- C. Perform Integrated Change Control
- D. Team performance assessment

Answer: A

NEW QUESTION 492

- (Topic 3)

What is a hierarchically organized depiction of the identified project risks arranged by risk category?

- A. Risk register
- B. Risk breakdown structure (RBS)
- C. Risk management plan
- D. Risk category

Answer: B

NEW QUESTION 496

- (Topic 3)

Assigned risk ratings are based upon:

- A. Root cause analysis.
- B. Risk probability and impact assessment.
- C. Expert judgment.
- D. Revised stakeholders' tolerances.

Answer: B

NEW QUESTION 497

- (Topic 3)

An input of the Control Schedule process is the:

- A. resource calendar.
- B. activity list.
- C. risk management plan.
- D. organizational process assets.

Answer: D

NEW QUESTION 500

- (Topic 3)

Which of the following consists of the detailed project scope statement and its associated WBS and WBS dictionary?

- A. Scope plan
- B. Product scope
- C. Scope management plan
- D. Scope baseline

Answer: D

NEW QUESTION 502

- (Topic 3)

The individual or group that provides resources and support for a project and is accountable for success is the:

- A. sponsor
- B. customer
- C. business partners
- D. functional managers

Answer: A

NEW QUESTION 504

- (Topic 3)

While implementing an approved change, a critical defect was introduced. Removing the defect will delay the product delivery. What is the MOST appropriate approach to managing this situation?

- A. Utilize the change control process.
- B. Crash the schedule to fix the defect.
- C. Leave the defect in and work around it.
- D. Fast-track the remaining development.

Answer: A

NEW QUESTION 509

- (Topic 3)

An output of the Develop Project Team process is:

- A. change requests
- B. team performance assessments
- C. project staff assignments
- D. project documents updates

Answer: B

NEW QUESTION 510

- (Topic 3)

What is the name of the statistical method that helps identify which factors may influence specific variables of a product or process under development or in production?

- A. Failure modes and effects analysis
- B. Design of experiments
- C. Quality checklist
- D. Risk analysis

Answer: B

NEW QUESTION 512

- (Topic 4)

The project scope statement and resource calendars are inputs to which Project Time Management process?

- A. Sequence Activities
- B. Estimate Activity Resources
- C. Develop Schedule
- D. Control Schedule

Answer: C

NEW QUESTION 514

- (Topic 4)

Which tool or technique is used in Manage Stakeholder Expectations?

- A. Stakeholder management strategy
- B. Communication methods
- C. Issue log
- D. Change requests

Answer: B

NEW QUESTION 517

- (Topic 4)

Which piece of information is part of the WBS Dictionary?

- A. Responsible organization
- B. Change requests
- C. Validated deliverables
- D. Organizational process assets

Answer: A

NEW QUESTION 518

- (Topic 4)

Which of the following is an output of Direct and Manage Project Execution?

- A. Project management plan
- B. Change request status updates
- C. Organizational process assets updates
- D. Work performance information

Answer: D

NEW QUESTION 520

- (Topic 4)

Which of the following strategic considerations often results in project authorization?

- A. Customer requests and/or issue resolution
- B. Stakeholder expectations and/or strategic opportunity (business need)
- C. Technological advancement and/or senior executive request
- D. Market demand and/or legal requirements

Answer: D

NEW QUESTION 522

- (Topic 4)

In the Develop Project Team process, which of the following is identified as a critical factor for a project's success?

- A. Team meetings
- B. Subcontracting teams
- C. Virtual teams
- D. Teamwork

Answer: D

NEW QUESTION 525

- (Topic 4)

Which of the following is an input to Control Scope?

- A. Project schedule
- B. Organizational process assets updates
- C. Project document updates
- D. Work performance information

Answer: D

NEW QUESTION 530

- (Topic 4)

Ensuring that both parties meet contractual obligations and that their own legal rights are protected is a function of:

- A. Conduct Procurements.
- B. Close Procurements.
- C. Administer Procurements,
- D. Plan Procurements.

Answer: C

NEW QUESTION 533

- (Topic 4)

Which of the following is an example of the simplest fixed-price contract?

- A. Purchase requisition
- B. Purchase order
- C. Verbal agreement
- D. Request for quote

Answer: B

NEW QUESTION 537

- (Topic 4)

Which can be used to determine whether a process is stable or has predictable performance?

- A. Matrix diagram
- B. Histogram
- C. Control chart
- D. Flowchart

Answer: C

NEW QUESTION 541

- (Topic 4)

Which of the following strategies is used to deal with risks that may have a negative impact on project objectives?

- A. Exploit
- B. Share
- C. Enhance

D. Transfer

Answer: D

NEW QUESTION 545

- (Topic 4)

A required input for Create WBS is a project:

- A. quality plan.
- B. schedule network.
- C. management document update.
- D. scope statement.

Answer: D

NEW QUESTION 549

- (Topic 4)

What does a CPI value greater than 1.0 indicate?

- A. Cost right at the estimated value
- B. Cost under the estimated value
- C. Cost right at the actual value
- D. Cost over the estimated value

Answer: B

NEW QUESTION 551

- (Topic 4)

Which is used to solicit proposals from prospective sellers?

- A. Procurement statement of work
- B. Resource calendars
- C. Procurement document
- D. Independent estimates

Answer: C

NEW QUESTION 554

- (Topic 4)

Which of the following schedule network analysis techniques is applied when a critical path method calculation has been completed and resources availability is critical?

- A. Applying calendars
- B. Resource leveling
- C. Resource planning
- D. Resource conflict management

Answer: B

NEW QUESTION 557

- (Topic 4)

Which type of elaboration allows a project management team to manage at a greater level of detail as the project evolves?

- A. Cyclic
- B. Progressive
- C. Repetitive
- D. Iterative

Answer: B

NEW QUESTION 559

- (Topic 4)

Which type of agreement is legal, contractual, and between two or more entities to form a partnership, joint venture, or some other arrangement as defined by the parties?

- A. Teaming
- B. Collective bargaining
- C. Sharing
- D. Working

Answer: A

NEW QUESTION 560

- (Topic 4)

Lessons learned documentation is gathered during which of the following Project Management Process Groups?

- A. Planning
- B. Executing
- C. Closing
- D. Initiating

Answer: C

NEW QUESTION 562

- (Topic 4)

Testing falls into which of the following categories of cost of quality?

- A. Internal failure costs
- B. Prevention costs
- C. Appraisal costs
- D. External failure costs

Answer: C

NEW QUESTION 564

- (Topic 4)

In a weak matrix, the project managers role is:

- A. part-time
- B. full-time
- C. occasional
- D. unlimited

Answer: A

NEW QUESTION 566

- (Topic 4)

Control charts, flowcharting, histograms, Pareto charts, and scatter diagrams are tools and techniques of which process?

- A. Perform Quality Control
- B. Perform Quality Assurance
- C. Plan Quality
- D. Report Performance

Answer: C

NEW QUESTION 567

- (Topic 4)

Which of the following Project Communication Management processes uses performance reports as an input?

- A. Manage Stakeholder Expectations
- B. Report Performance
- C. Distribute Information
- D. Plan Communications

Answer: C

NEW QUESTION 571

- (Topic 4)

Which of the following project documents is an input to the Control Scope process?

- A. Vendor risk assessment diagram
- B. Risk register
- C. Requirements traceability matrix
- D. Area of responsibility summary

Answer: C

NEW QUESTION 575

- (Topic 4)

In which process is a project manager identified and given the authority to apply resources to project activities?

- A. Acquire Project Team
- B. Develop Project Management Plan
- C. Manage Project Execution
- D. Develop Project Charter

Answer: D

NEW QUESTION 580

- (Topic 4)

Which Perform Quality Control tool graphically represents how various elements of a system interrelate?

- A. Control chart
- B. Flowchart
- C. Run chart
- D. Pareto chart

Answer: B

NEW QUESTION 584

- (Topic 4)

Which of the following events would result in a baseline update?

- A. A project is behind schedule and the project manager wants the baseline to reflect estimated actual completion.
- B. A customer has approved a change request broadening the project scope and increasing the budget.
- C. One of the risks identified in the risk management plan occurs, resulting in a schedule delay.
- D. One of the key project team resources has left the team and no replacement is available.

Answer: B

NEW QUESTION 586

- (Topic 4)

When sequencing activities, what does the common acronym FF stand for?

- A. Fixed Fee
- B. Free Float
- C. Fixed Finish
- D. Finish-to-Finish

Answer: D

NEW QUESTION 591

- (Topic 4)

The definition of operations is a/an:

- A. organizational function performing the temporary execution of activities that produce the same product or provide repetitive service.
- B. temporary endeavor undertaken to create a unique product, service, or result.
- C. organization that provides oversight for an administrative area.
- D. organizational function performing the ongoing execution of activities that produce the same product or provide repetitive service.

Answer: D

NEW QUESTION 592

- (Topic 4)

The process of identifying the stakeholders' information needs is completed during:

- A. Plan Communications.
- B. Manage Stakeholder Expectations.
- C. Stakeholder Analysis.
- D. Identify Stakeholders.

Answer: A

NEW QUESTION 593

- (Topic 4)

What is a tool to improve team performance?

- A. Staffing plan
- B. External feedback
- C. Performance reports
- D. Co-location

Answer: D

NEW QUESTION 597

- (Topic 4)

Which of the following statements is true regarding project and product lifecycles?

- A. A single product lifecycle may consist of multiple project lifecycles.
- B. A product lifecycle is always shorter than the project lifecycle.
- C. A single product lifecycle can only have one project lifecycle.
- D. A single project lifecycle may consist of multiple product lifecycles.

Answer: A

NEW QUESTION 601

- (Topic 4)

In Project Cost Management, which input is exclusive to the Determine Budget process?

- A. Scope baseline
- B. Organizational process assets
- C. Project schedule
- D. Resource calendars

Answer: D

NEW QUESTION 604

- (Topic 4)

Changes to formally controlled documentation, plans, etc. to reflect modified or additional ideas or content are known as:

- A. updates.
- B. defect repairs.
- C. preventive actions.
- D. corrective actions.

Answer: A

NEW QUESTION 605

- (Topic 4)

What is the primary benefit of meeting quality requirements?

- A. Quality metrics
- B. Less rework
- C. Quality control measurements
- D. Benchmarking

Answer: B

NEW QUESTION 610

- (Topic 4)

What risk technique is used to quantify the probability and impact of risks on project objectives?

- A. Expert judgment
- B. Risk registry
- C. Risk response planning
- D. Interviewing

Answer: D

NEW QUESTION 612

- (Topic 4)

The project manager at an organization has just realized that some of the engineering staff has been allocated to project Y and will not be available to finish task X. The project manager has also discovered that at the current pace, it will not be possible to complete the project on time. Due to cost constraints, hiring more work force is not a viable option. Which tools are at the manager's disposal?

- A. Resource leveling and fast tracking
- B. Fast tracking and crashing
- C. Crashing and applying leads and lags
- D. Scheduling tools and applying leads and lags

Answer: A

NEW QUESTION 613

- (Topic 4)

Which process occurs within the Monitoring and Controlling Process Group?

- A. Control Costs
- B. Plan Quality
- C. Perform Quantitative Risk Analysis
- D. Determine Budget

Answer: A

NEW QUESTION 617

- (Topic 4)

Which type of management focuses on ensuring that projects and programs are reviewed to prioritize resource allocation?

- A. Project
- B. Functional
- C. Program
- D. Portfolio

Answer: D

NEW QUESTION 620

- (Topic 4)

Which of the following tools and techniques is used in the Verify Scope process?

- A. Inspection
- B. Variance analysis
- C. Expert judgment
- D. Decomposition

Answer: A

NEW QUESTION 625

- (Topic 4)

Which of the following is an input to the Perform Qualitative Risk Analysis process?

- A. Risk register
- B. Risk data quality assessment
- C. Risk categorization
- D. Risk urgency

Answer: A

NEW QUESTION 626

- (Topic 4)

Which cost estimate technique includes contingencies to account for cost uncertainty?

- A. Vendor bid analysis
- B. Three-point estimates
- C. Parametric estimating
- D. Reserve analysis

Answer: D

NEW QUESTION 631

- (Topic 4)

When addressing roles and responsibilities, which item ensures that the staff has the skills required to complete project activities?

- A. Authority
- B. Role
- C. Competency
- D. Responsibility

Answer: C

NEW QUESTION 634

- (Topic 4)

Labor, materials, equipment, and supplies are examples of:

- A. Resource attributes.
- B. Resource types.
- C. Resource categories.
- D. Resource breakdown structures (RBS).

Answer: C

NEW QUESTION 636

- (Topic 4)

Which of the following is an example of schedule compression?

- A. Activity sequencing
- B. Resource leveling
- C. Lead and lag adjusting
- D. Crashing

Answer: D

NEW QUESTION 640

- (Topic 4)

Which of the following outputs from the Control Schedule process aids in the communication of schedule variance (SV), schedule performance index (SPI), or any performance status to stakeholders?

- A. Performance organizations
- B. Schedule baselines

- C. Work performance measurements
- D. Change requests

Answer: C

NEW QUESTION 641

- (Topic 4)

Which of the following documents allows the project manager to assess risks that may require near term action?

- A. Probability and impact matrix
- B. Contingency analysis report
- C. Risk urgency assessment
- D. Rolling wave plan

Answer: C

NEW QUESTION 646

- (Topic 4)

Which of the following is an output of the Perform Integrated Change Control process?

- A. Project document updates
- B. Organizational process assets updates
- C. Change requests
- D. Deliverables

Answer: A

NEW QUESTION 650

- (Topic 4)

Analogous cost estimating relies on which of the following techniques?

- A. Expert judgment
- B. Project management software
- C. Vendor bid analysis
- D. Reserve analysis

Answer: A

NEW QUESTION 651

- (Topic 4)

During which process would stakeholders provide formal acceptance of the completed project scope?

- A. Perform Quality Control
- B. Verify Scope
- C. Control Scope
- D. Develop Schedule

Answer: B

NEW QUESTION 652

- (Topic 4)

"Tailoring" is defined as the:

- A. effort of addressing each process to determine which are appropriate and their appropriate degree of rigor.
- B. act of creating a project team with the specialized skills required to produce a required product or service.
- C. action taken to bring a defective or nonconforming component into compliance with requirements or specifications.
- D. adjustment of the respective influences of time, cost, and quality in order to most efficiently achieve scope.

Answer: A

NEW QUESTION 656

- (Topic 4)

Co-location is a tool and technique of:

- A. Develop Human Resource Plan.
- B. Manage Project Team.
- C. Develop Project Team.
- D. Acquire Project Team.

Answer: C

NEW QUESTION 659

- (Topic 4)

Monte Carlo is which type of risk analysis technique?

- A. Probability
- B. Quantitative
- C. Qualitative
- D. Sensitivity

Answer: B

NEW QUESTION 662

- (Topic 4)

Which of the following is an input to the Direct and Manage Project Execution process?

- A. Approved change requests
- B. Approved contract documentation
- C. Work performance information
- D. Rejected change requests

Answer: A

NEW QUESTION 667

- (Topic 4)

Which degree of authority does a project manager have on a project in a strong matrix organizational structure?

- A. Limited
- B. Low to moderate
- C. Moderate to high
- D. High to almost total

Answer: C

NEW QUESTION 670

- (Topic 4)

What provides information regarding the ways people, teams, and organizational units behave?

- A. Organizational chart
- B. Organizational theory
- C. Organizational structure
- D. Organizational behavior

Answer: B

NEW QUESTION 675

- (Topic 4)

Which activity involves ensuring that the composition of a projects configuration items is correct?

- A. Configuration Identification
- B. Configuration Status Accounting
- C. Configuration Verification and Audit
- D. Configuration Quality Assurance

Answer: C

NEW QUESTION 679

- (Topic 4)

To please the customer, a project team member delivers a requirement which is uncontrolled. This is not part of the plan. This describes:

- A. scope creep.
- B. a change request.
- C. work performance information.
- D. deliverables.

Answer: A

NEW QUESTION 681

- (Topic 4)

Change request status updates are an output of which process?

- A. Perform Integrated Change Control
- B. Direct and Manage Project Execution
- C. Close Project or Phase
- D. Monitor and Control Project Work

Answer: A

NEW QUESTION 686

- (Topic 4)

Which of the following helps to ensure that each requirement adds business value by linking it to the business and project objectives?

- A. Requirements traceability matrix
- B. Work breakdown structure (WBS) dictionary
- C. Requirements management plan
- D. Requirements documentation

Answer: A

NEW QUESTION 689

- (Topic 4)

When large or complex projects are separated into distinct phases or subprojects, all of the Process Groups would normally be:

- A. divided among each of the phases or subprojects.
- B. repeated for each of the phases or subprojects.
- C. linked to specific phases or subprojects.
- D. integrated for specific phases or subprojects.

Answer: B

NEW QUESTION 693

- (Topic 4)

What is the schedule performance index (SPI) using the following data? BAC = \$100,000 PV = \$50,000 AC = \$80,000 EV = \$40,000

- A. 1
- B. 0.4
- C. 0.5
- D. 0.8

Answer: D

NEW QUESTION 694

- (Topic 5)

During project selection, which factor is most important?

- A. Types of constraints
- B. Internal business needs
- C. Budget
- D. Schedule

Answer: B

NEW QUESTION 697

- (Topic 5)

Which process is responsible for monitoring the status of the project and product scope and managing changes to the scope baseline?

- A. Variance Analysis
- B. Define Scope
- C. Verify Scope
- D. Control Scope

Answer: D

NEW QUESTION 699

- (Topic 5)

At the end of the project, what will be the value of SV?

- A. Positive
- B. Zero
- C. Negative
- D. Greater than one

Answer: B

NEW QUESTION 700

- (Topic 5)

A tool and technique used during the Collect Requirements process is:

- A. prototypes.
- B. expert judgment.
- C. alternatives identification.
- D. product analysis.

Answer: A

NEW QUESTION 703

- (Topic 5)

Under which type of contract does the seller receive reimbursement for all allowable costs for performing contract work, as well as a fixed-fee payment calculated as a percentage of the initial estimated project costs?

- A. Cost Plus Fixed Fee Contract (CPFF)
- B. Cost Plus Incentive Fee Contract (CPIF)
- C. Firm Fixed Price Contract (FFP)
- D. Fixed Price with Economic Price Adjustment Contract (FP-EPA)

Answer: A

NEW QUESTION 705

- (Topic 5)

Which index is the calculated projection of cost performance that must be achieved on the remaining work to meet a specified management goal?

- A. Estimate at completion
- B. Cost performance
- C. Schedule performance
- D. To-complete performance

Answer: D

NEW QUESTION 706

- (Topic 5)

Which of the following is an output of the Conduct Procurements process?

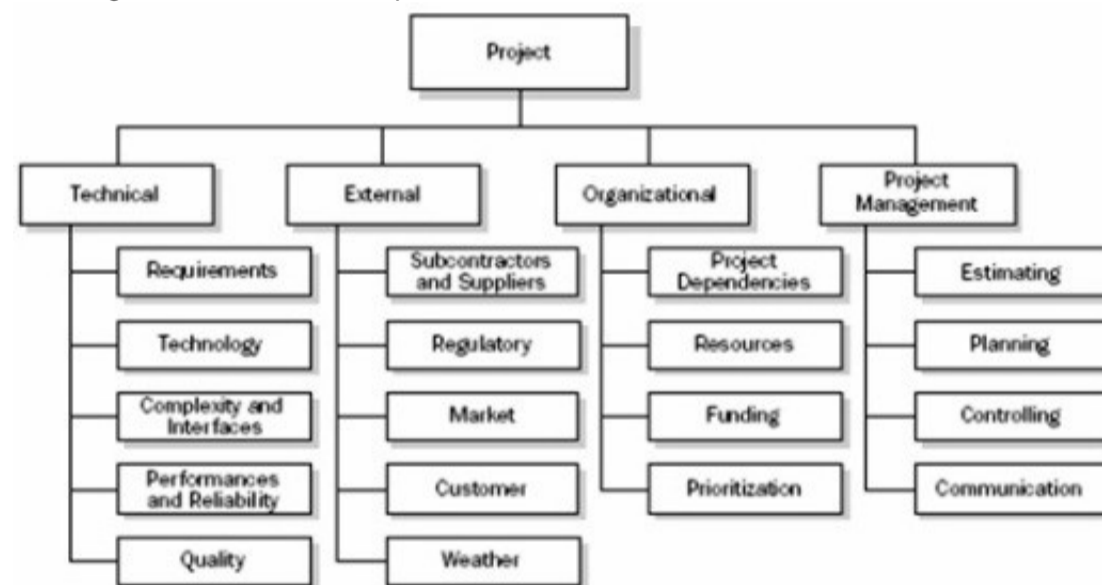
- A. Project statement of work
- B. Selected sellers
- C. Risk register updates
- D. Teaming agreements

Answer: B

NEW QUESTION 709

- (Topic 5)

The diagram below is an example of a:



- A. Risk breakdown structure (RBS).
- B. Project team.
- C. SWOT Analysis.
- D. Work breakdown structure (WBS).

Answer: A

NEW QUESTION 713

- (Topic 5)

Which activity may occur at project or phase closure?

- A. Acceptance of deliverables
- B. Change requests
- C. Project management plan updates
- D. Benchmarking

Answer: A

NEW QUESTION 716

- (Topic 5)

Projects are separated into phases or subprojects; these phases include:

- A. feasibility study, concept development, design, and prototype.
- B. initiate, plan, execute, and monitor.
- C. Develop Charter, Define Activities, Manage Stakeholder Expectations, and Report Performance.
- D. Identify Stakeholders, develop concept, build, and test.

Answer: A

NEW QUESTION 721

- (Topic 5)

Expected monetary value (EMV) is computed by which equation?

- A. Value of each possible outcome multiplied by probability of occurrence
- B. Value of each possible outcome multiplied by probability of non-occurrence
- C. Multiplying the value of each possible outcome by the probability of occurrence and adding the products together
- D. Multiplying the value of each possible outcome by the probability of non-occurrence and adding the products together

Answer: C

NEW QUESTION 723

- (Topic 5)

Which of the following is a tool or technique used in the Determine Budget process?

- A. Variance analysis
- B. Three-point estimating
- C. Bottom-up estimating
- D. Historical relationships

Answer: D

NEW QUESTION 725

- (Topic 5)

The application of knowledge, skills, tools, and techniques to project activities to meet project requirements describes management of which of the following?

- A. Project
- B. Scope
- C. Contract
- D. Program

Answer: A

NEW QUESTION 727

- (Topic 5)

A tool and technique used during the Define Scope process is:

- A. facilitated workshops.
- B. observations.
- C. questionnaires and surveys.
- D. group creativity techniques.

Answer: A

NEW QUESTION 729

- (Topic 5)

When cost variance is negative and schedule variance is positive, the project is:

- A. under budget and behind schedule.
- B. over budget and ahead of schedule.
- C. on schedule.
- D. complete; all planned values have been earned.

Answer: B

NEW QUESTION 732

- (Topic 5)

Which process requires implementation of approved changes?

- A. Direct and Manage Project Execution
- B. Monitor and Control Project Work
- C. Perform Integrated Change Control
- D. Close Project or Phase

Answer: A

NEW QUESTION 734

- (Topic 5)

The process of identifying specific actions to be performed to produce project deliverables is:

- A. Define Activities.
- B. Create WBS.
- C. Define Scope.
- D. Develop Schedule.

Answer: A

NEW QUESTION 737

- (Topic 5)

Plan-do-check-act is also known as:

- A. prevention over inspection.
- B. statistical sampling.
- C. management responsibility,
- D. continuous improvement.

Answer: D

NEW QUESTION 740

- (Topic 5)

An input to the Collect Requirements process is the:

- A. stakeholder register.
- B. project management plan.
- C. project scope statement.
- D. requirements management plan.

Answer: A

NEW QUESTION 742

- (Topic 5)

Fast tracking is a schedule compression technique used to shorten the project schedule without changing project scope. Which of the following can result from fast tracking?

- A. The risk of achieving the shortened project time is increased.
- B. The critical path will have positive total float.
- C. Contingency reserves are released for redeployment by the project manager.
- D. Duration buffers are added to maintain a focus on planned activity durations.

Answer: A

NEW QUESTION 747

- (Topic 5)

Which of the following is a tool and technique used to monitor risk?

- A. Technical performance measurement
- B. Cost performance baseline
- C. Benchmarking
- D. Cost of quality

Answer: A

NEW QUESTION 751

- (Topic 5)

In the basic communication model, which term refers to the method that is used to convey the message?

- A. Decode
- B. Encode
- C. Medium
- D. Noise

Answer: C

NEW QUESTION 753

- (Topic 5)

The item that provides more detailed descriptions of the components in the work breakdown structure (WBS) is called a WBS:

- A. dictionary.
- B. chart.
- C. report.
- D. register.

Answer: A

NEW QUESTION 755

- (Topic 5)

Which of the following is a strategy to deal with positive risks or opportunities?

- A. Mitigate
- B. Transfer
- C. Exploit
- D. Avoid

Answer: C

NEW QUESTION 757

- (Topic 5)

The initial development of a Project Scope Management plan uses which technique?

- A. Alternatives identification
- B. Scope decomposition
- C. Expert judgment
- D. Product analysis

Answer: C

NEW QUESTION 758

- (Topic 5)

The risk shared between the buyer and seller is determined by the:

- A. assumption log.
- B. quality checklist.
- C. risk register.
- D. contract type.

Answer: D

NEW QUESTION 761

- (Topic 5)

Activity cost estimates are quantitative assessments of the probable costs required to:

- A. Create WBS.
- B. complete project work.
- C. calculate costs.
- D. Develop Project Management Plan.

Answer: B

NEW QUESTION 765

- (Topic 5)

Which quality control technique illustrates the 80/20 principle?

- A. Ishikawa diagram
- B. Control chart
- C. Run chart
- D. Pareto chart

Answer: D

NEW QUESTION 767

- (Topic 5)

Which of the following is an input to the Develop Project Charter process?

- A. Work performance information
- B. Project management plan
- C. Business case
- D. Change requests

Answer: C

NEW QUESTION 768

- (Topic 5)

Which characteristics do effective project managers possess?

- A. Project management knowledge, performance skills, and personal effectiveness
- B. Preparedness, project management knowledge, and personality characteristics
- C. General management, preparedness, and project management knowledge
- D. Assertiveness, collaboration, and performance skills

Answer: A

NEW QUESTION 771

- (Topic 5)

Which of the following is a group decision-making technique?

- A. Brainstorming
- B. Focus groups
- C. Affinity diagram
- D. Plurality

Answer: D

NEW QUESTION 774

- (Topic 5)

Who is responsible for initiating a project?

- A. Project sponsor
- B. Project manager
- C. Program manager
- D. Project management office (PMO)

Answer: A

NEW QUESTION 776

- (Topic 5)

Which statement correctly describes the value of a business case?

- A. It provides the necessary information to determine if a project is worth the required investment.
- B. It provides for alternative dispute resolution procedures in event of contract default.
- C. It offers one of several alternative scenarios which assist in performing qualitative risk analysis.
- D. It is used to help a project manager understand the scope of commercial advantages.

Answer: A

NEW QUESTION 777

- (Topic 5)

Which tool or technique can a project manager use to select in advance a team member who will be crucial to the task?

- A. Acquisition
- B. Negotiation
- C. Virtual team
- D. Pre-assignment

Answer: D

NEW QUESTION 779

- (Topic 5)

What happens to a stakeholder's project influence over time?

- A. Increases
- B. Decreases
- C. Stays the same
- D. Has no bearing

Answer: B

NEW QUESTION 783

- (Topic 5)

The completion of the project scope is measured against the:

- A. requirements documentation.
- B. project scope statement.
- C. project management plan.
- D. work performance measurements.

Answer: C

NEW QUESTION 785

- (Topic 5)

The process improvement plan details the steps for analyzing processes to identify activities which enhance their:

- A. quality.
- B. value.
- C. technical performance.
- D. status.

Answer:

B

NEW QUESTION 787

- (Topic 5)

The cost benefit analysis tool is used for creating:

- A. Pareto charts.
- B. quality metrics.
- C. change requests,
- D. Ishikawa diagrams.

Answer: B

NEW QUESTION 789

- (Topic 5)

The probability and impact matrix is primarily used to:

- A. Quantify risk issues for trends during a quality audit.
- B. Develop a risk register for risk planning.
- C. Evaluate each risk's importance and priority during Perform Qualitative Risk Analysis.
- D. Define risk and compare impacts during Perform Quantitative Risk Analysis.

Answer: C

NEW QUESTION 790

- (Topic 5)

Which is one of the determining factors used to calculate CPI?

- A. EV
- B. SPI
- C. PV
- D. ETC

Answer: A

NEW QUESTION 792

- (Topic 5)

The three processes of Project Cost Management are:

- A. Estimate Costs, Control Schedule, and Control Costs.
- B. Estimate Costs, Determine Budget, and Estimate Activity Resources.
- C. Determine Budget, Control Schedule, and Estimate Activity Resources.
- D. Estimate Costs, Determine Budget, and Control Costs.

Answer: D

NEW QUESTION 796

- (Topic 5)

Which is an output of the Collect Requirements process?

- A. Requirements traceability matrix
- B. Project scope statement
- C. WBS dictionary
- D. Work performance measurements

Answer: A

NEW QUESTION 799

- (Topic 5)

Which of the following are an enterprise environmental factor that can influence the Identify Risks process?

- A. Work performance reports
- B. Assumptions logs
- C. Network diagrams
- D. Academic studies

Answer: D

NEW QUESTION 800

- (Topic 5)

While preparing the project management plan on a weekly basis, the project manager indicates the intention to provide an issues report to the staff via e-mail. In which part of the plan will this type of information be included?

- A. Communications management plan
- B. Human resource plan
- C. Quality management plan

D. Procurement management plan

Answer: A

NEW QUESTION 804

- (Topic 5)

A project manager at a publishing company decides to initiate the editing phase of the project as soon as each chapter is written. Which type of Sequence Activities tool and technique is involved, considering that there was a start-to-start relationship with a 15-day delay?

- A. Slack
- B. Float
- C. Lag
- D. Lead

Answer: C

NEW QUESTION 809

- (Topic 5)

Which of the following is an output of Define Scope?

- A. Project scope statement
- B. Project charter
- C. Project plan
- D. Project schedule

Answer: A

NEW QUESTION 811

- (Topic 5)

After Define Activities and Sequence Activities, the next process is:

- A. Estimate Activity Resources.
- B. Estimate Activity Durations,
- C. Develop Schedule.
- D. Control Schedule.

Answer: A

NEW QUESTION 816

- (Topic 5)

Risk exists the moment that a project is:

- A. planned.
- B. conceived.
- C. chartered.
- D. executed.

Answer: B

NEW QUESTION 817

- (Topic 5)

Which of the following is a statistical concept that calculates the average outcome when the future includes scenarios that may or may not happen?

- A. Sensitivity analysis
- B. Three-point estimate
- C. Modeling and simulation
- D. Expected monetary value analysis

Answer: D

NEW QUESTION 821

.....

Thank You for Trying Our Product

We offer two products:

1st - We have Practice Tests Software with Actual Exam Questions

2nd - Questions and Answers in PDF Format

PMI-100 Practice Exam Features:

- * PMI-100 Questions and Answers Updated Frequently
- * PMI-100 Practice Questions Verified by Expert Senior Certified Staff
- * PMI-100 Most Realistic Questions that Guarantee you a Pass on Your FirstTry
- * PMI-100 Practice Test Questions in Multiple Choice Formats and Updatesfor 1 Year

100% Actual & Verified — Instant Download, Please Click
[Order The PMI-100 Practice Test Here](#)