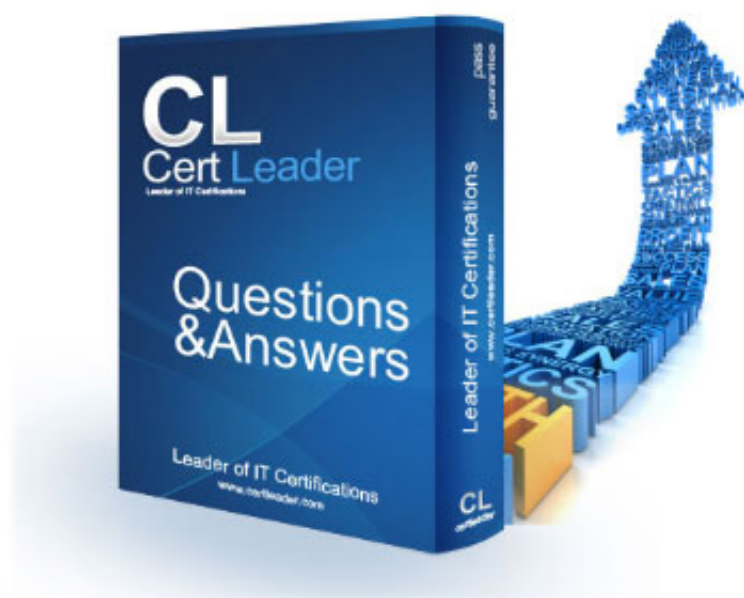


AWS-Certified-Machine-Learning-Specialty Dumps

AWS Certified Machine Learning - Specialty

<https://www.certleader.com/AWS-Certified-Machine-Learning-Specialty-dumps.html>



NEW QUESTION 1

A Data Scientist needs to create a serverless ingestion and analytics solution for high-velocity, real-time streaming data.

The ingestion process must buffer and convert incoming records from JSON to a query-optimized, columnar format without data loss. The output datastore must be highly available, and Analysts must be able to run SQL queries against the data and connect to existing business intelligence dashboards.

Which solution should the Data Scientist build to satisfy the requirements?

- A. Create a schema in the AWS Glue Data Catalog of the incoming data format.
- B. Use an Amazon Kinesis Data Firehose delivery stream to stream the data and transform the data to Apache Parquet or ORC format using the AWS Glue Data Catalog before delivering to Amazon S3. Have the Analysts query the data directly from Amazon S3 using Amazon Athena, and connect to BI tools using the Athena Java Database Connectivity (JDBC) connector.
- C. Write each JSON record to a staging location in Amazon S3. Use the S3 Put event to trigger an AWS Lambda function that transforms the data into Apache Parquet or ORC format and writes the data to a processed data location in Amazon S3. Have the Analysts query the data directly from Amazon S3 using Amazon Athena, and connect to BI tools using the Athena Java Database Connectivity (JDBC) connector.
- D. Write each JSON record to a staging location in Amazon S3. Use the S3 Put event to trigger an AWS Lambda function that transforms the data into Apache Parquet or ORC format and inserts it into an Amazon RDS PostgreSQL database.
- E. Have the Analysts query and run dashboards from the RDS database.
- F. Use Amazon Kinesis Data Analytics to ingest the streaming data and perform real-time SQL queries to convert the records to Apache Parquet before delivering to Amazon S3. Have the Analysts query the data directly from Amazon S3 using Amazon Athena and connect to BI tools using the Athena Java Database Connectivity (JDBC) connector.

Answer: A

NEW QUESTION 2

A company is converting a large number of unstructured paper receipts into images. The company wants to create a model based on natural language processing (NLP) to find relevant entities such as date, location, and notes, as well as some custom entities such as receipt numbers.

The company is using optical character recognition (OCR) to extract text for data labeling. However, documents are in different structures and formats, and the company is facing challenges with setting up the manual workflows for each document type. Additionally, the company trained a named entity recognition (NER) model for custom entity detection using a small sample size. This model has a very low confidence score and will require retraining with a large dataset.

Which solution for text extraction and entity detection will require the LEAST amount of effort?

- A. Extract text from receipt images by using Amazon Textract.
- B. Use the Amazon SageMaker BlazingText algorithm to train on the text for entities and custom entities.
- C. Extract text from receipt images by using a deep learning OCR model from the AWS Marketplace.
- D. Use the NER deep learning model to extract entities.
- E. Extract text from receipt images by using Amazon Textract.
- F. Use Amazon Comprehend for entity detection, and use Amazon Comprehend custom entity recognition for custom entity detection.
- G. Extract text from receipt images by using a deep learning OCR model from the AWS Marketplace.
- H. Use Amazon Comprehend for entity detection, and use Amazon Comprehend custom entity recognition for custom entity detection.

Answer: C

NEW QUESTION 3

A Machine Learning Specialist observes several performance problems with the training portion of a machine learning solution on Amazon SageMaker. The solution uses a large training dataset 2 TB in size and is using the SageMaker k-means algorithm. The observed issues include the unacceptable length of time it takes before the training job launches and poor I/O throughput while training the model.

What should the Specialist do to address the performance issues with the current solution?

- A. Use the SageMaker batch transform feature.
- B. Compress the training data into Apache Parquet format.
- C. Ensure that the input mode for the training job is set to Pipe.
- D. Copy the training dataset to an Amazon EFS volume mounted on the SageMaker instance.

Answer: B

NEW QUESTION 4

A company is building a new version of a recommendation engine. Machine learning (ML) specialists need to keep adding new data from users to improve personalized recommendations. The ML specialists gather data from the users' interactions on the platform and from sources such as external websites and social media.

The pipeline cleans, transforms, enriches, and compresses terabytes of data daily, and this data is stored in Amazon S3. A set of Python scripts was coded to do the job and is stored in a large Amazon EC2 instance. The whole process takes more than 20 hours to finish, with each script taking at least an hour. The company wants to move the scripts out of Amazon EC2 into a more managed solution that will eliminate the need to maintain servers.

Which approach will address all of these requirements with the LEAST development effort?

- A. Load the data into an Amazon Redshift cluster.
- B. Execute the pipeline by using SQS.
- C. Store the results in Amazon S3.
- D. Load the data into Amazon DynamoDB.
- E. Convert the scripts to an AWS Lambda function.
- F. Execute the pipeline by triggering Lambda execution.
- G. Store the results in Amazon S3.
- H. Create an AWS Glue job.
- I. Convert the scripts to PySpark.
- J. Execute the pipeline.
- K. Store the results in Amazon S3.
- L. Create a set of individual AWS Lambda functions to execute each of the scripts.
- M. Build a step function by using the AWS Step Functions Data Science SDK.
- N. Store the results in Amazon S3.

Answer: B

NEW QUESTION 5

A Machine Learning Specialist works for a credit card processing company and needs to predict which transactions may be fraudulent in near-real time. Specifically, the Specialist must train a model that returns the probability that a given transaction may be fraudulent. How should the Specialist frame this business problem'?

- A. Streaming classification
- B. Binary classification
- C. Multi-category classification
- D. Regression classification

Answer: A

NEW QUESTION 6

An agency collects census information within a country to determine healthcare and social program needs by province and city. The census form collects responses for approximately 500 questions from each citizen. Which combination of algorithms would provide the appropriate insights? (Select TWO)

- A. The factorization machines (FM) algorithm
- B. The Latent Dirichlet Allocation (LDA) algorithm
- C. The principal component analysis (PCA) algorithm
- D. The k-means algorithm
- E. The Random Cut Forest (RCF) algorithm

Answer: CD

Explanation:

The PCA and K-means algorithms are useful in collection of data using census form.

NEW QUESTION 7

A machine learning (ML) specialist is using Amazon SageMaker hyperparameter optimization (HPO) to improve a model's accuracy. The learning rate parameter is specified in the following HPO configuration:

```
{
  "Name": "learning_rate",
  "MaxValue" : "0.0001",
  "MinValue": "0.1"
}
```

During the results analysis, the ML specialist determines that most of the training jobs had a learning rate between 0.01 and 0.1. The best result had a learning rate of less than 0.01. Training jobs need to run regularly over a changing dataset. The ML specialist needs to find a tuning mechanism that uses different learning rates more evenly from the provided range between MinValue and MaxValue. Which solution provides the MOST accurate result?

A. Modify the HPO configuration as follows: C:\Users\Admin\Desktop\Data\Odt data\Untitled.jpgSelect the most accurate hyperparameter configuration form this HPO job.

```
{
  "Name": "learning_rate",
  "MaxValue" : "0.0001",
  "MinValue": "0.1"
  "ScalingType": "ReverseLogarithmic"
}
```

B. Run three different HPO jobs that use different learning rates form the following intervals for MinValue and MaxValue while using the same number of training jobs for each HPO job:[0.01, 0.1][0.001, 0.01][0.0001, 0.001]Select the most accurate hyperparameter configuration form these three HPO jobs.

C. Modify the HPO configuration as follows: C:\Users\Admin\Desktop\Data\Odt data\Untitled.jpg

```
{
  "Name": "learning_rate",
  "MaxValue" : "0.0001",
  "MinValue": "0.1"
  "ScalingType": "Logarithmic"
}
```

Select the most accurate hyperparameter configuration form this training job.

D. Run three different HPO jobs that use different learning rates form the following intervals for MinValue and MaxValu

E. Divide the number of training jobs for each HPO job by three:[0.01, 0.1][0.001, 0.01][0.0001, 0.001]Select the most accurate hyperparameter configuration form these three HPO jobs.

Answer: C

NEW QUESTION 8

A Machine Learning Specialist was given a dataset consisting of unlabeled data. The Specialist must create a model that can help the team classify the data into different buckets. What model should be used to complete this work?

- A. K-means clustering
- B. Random Cut Forest (RCF)
- C. XGBoost
- D. BlazingText

Answer: A

NEW QUESTION 9

A Machine Learning Specialist is implementing a full Bayesian network on a dataset that describes public transit in New York City. One of the random variables is discrete, and represents the number of minutes New Yorkers wait for a bus given that the buses cycle every 10 minutes, with a mean of 3 minutes. Which prior probability distribution should the ML Specialist use for this variable?

- A. Poisson distribution ,
- B. Uniform distribution
- C. Normal distribution
- D. Binomial distribution

Answer: A

NEW QUESTION 10

A Machine Learning Specialist is creating a new natural language processing application that processes a dataset comprised of 1 million sentences. The aim is to then run Word2Vec to generate embeddings of the sentences and enable different types of predictions.

Here is an example from the dataset:

"The quck BROWN FOX jumps over the lazy dog "

Which of the following are the operations the Specialist needs to perform to correctly sanitize and prepare the data in a repeatable manner? (Select THREE)

- A. Perform part-of-speech tagging and keep the action verb and the nouns only
- B. Normalize all words by making the sentence lowercase
- C. Remove stop words using an English stopword dictionary.
- D. Correct the typography on "quck" to "quick."
- E. One-hot encode all words in the sentence
- F. Tokenize the sentence into words.

Answer: BCF

NEW QUESTION 10

A large mobile network operating company is building a machine learning model to predict customers who are likely to unsubscribe from the service. The company plans to offer an incentive for these customers as the cost of churn is far greater than the cost of the incentive.

The model produces the following confusion matrix after evaluating on a test dataset of 100 customers: Based on the model evaluation results, why is this a viable model for production?

n = 100	PREDICTED CHURN	
	Yes	No
ACTUAL Churn Yes	10	4
Actual No	10	76

- A. The model is 86% accurate and the cost incurred by the company as a result of false negatives is less than the false positives.
- B. The precision of the model is 86%, which is less than the accuracy of the model.
- C. The model is 86% accurate and the cost incurred by the company as a result of false positives is less than the false negatives.
- D. The precision of the model is 86%, which is greater than the accuracy of the model.

Answer: A

NEW QUESTION 13

A Machine Learning team uses Amazon SageMaker to train an Apache MXNet handwritten digit classifier model using a research dataset. The team wants to receive a notification when the model is overfitting. Auditors want to view the Amazon SageMaker log activity report to ensure there are no unauthorized API calls. What should the Machine Learning team do to address the requirements with the least amount of code and fewest steps?

- A. Implement an AWS Lambda function to log Amazon SageMaker API calls to Amazon S3. Add code to push a custom metric to Amazon CloudWatch.
- B. Create an alarm in CloudWatch with Amazon SNS to receive a notification when the model is overfitting.
- C. Use AWS CloudTrail to log Amazon SageMaker API calls to Amazon S3. Add code to push a custom metric to Amazon CloudWatch.
- D. Create an alarm in CloudWatch with Amazon SNS to receive a notification when the model is overfitting.
- E. Implement an AWS Lambda function to log Amazon SageMaker API calls to AWS CloudTrail.
- F. Add code to push a custom metric to Amazon CloudWatch.
- G. Create an alarm in CloudWatch with Amazon SNS to receive a notification when the model is overfitting.
- H. Use AWS CloudTrail to log Amazon SageMaker API calls to Amazon S3. Set up Amazon SNS to receive a notification when the model is overfitting.

Answer: C

NEW QUESTION 16

A bank wants to launch a low-rate credit promotion. The bank is located in a town that recently experienced economic hardship. Only some of the bank's customers were affected by the crisis, so the bank's credit team must identify which customers to target with the promotion. However, the credit team wants to make sure that loyal customers' full credit history is considered when the decision is made.

The bank's data science team developed a model that classifies account transactions and understands credit eligibility. The data science team used the XGBoost

algorithm to train the model. The team used 7 years of bank transaction historical data for training and hyperparameter tuning over the course of several days. The accuracy of the model is sufficient, but the credit team is struggling to explain accurately why the model denies credit to some customers. The credit team has almost no skill in data science.

What should the data science team do to address this issue in the MOST operationally efficient manner?

- A. Use Amazon SageMaker Studio to rebuild the mode
- B. Create a notebook that uses the XGBoost training container to perform model trainin
- C. Deploy the model at an endpoint
- D. Enable Amazon SageMaker Model Monitor to store inference
- E. Use the inferences to create Shapley values that help explain model behavio
- F. Create a chart that shows features and SHapley Additive explanation (SHAP) values to explain to the credit team how the features affect the model outcomes.
- G. Use Amazon SageMaker Studio to rebuild the mode
- H. Create a notebook that uses the XGBoost training container to perform model trainin
- I. Activate Amazon SageMaker Debugger, and configure it to calculate and collect Shapley value
- J. Create a chart that shows features and SHapley Additive explanation (SHAP) values to explain to the credit team how the features affect the model outcomes.
- K. Create an Amazon SageMaker notebook instanc
- L. Use the notebook instance and the XGBoost library to locally retrain the mode
- M. Use the plot_importance() method in the Python XGBoost interface to create a feature importance char
- N. Use that chart to explain to the credit team how the features affect the model outcomes.
- O. Use Amazon SageMaker Studio to rebuild the mode
- P. Create a notebook that uses the XGBoost training container to perform model trainin
- Q. Deploy the model at an endpoint
- R. Use Amazon SageMakerProcessing to post-analyze the model and create a feature importance explainability chart automatically for the credit team.

Answer: C

NEW QUESTION 18

A Machine Learning Specialist deployed a model that provides product recommendations on a company's website Initially, the model was performing very well and resulted in customers buying more products on average However within the past few months the Specialist has noticed that the effect of product recommendations has diminished and customers are starting to return to their original habits of spending less The Specialist is unsure of what happened, as the model has not changed from its initial deployment over a year ago

Which method should the Specialist try to improve model performance?

- A. The model needs to be completely re-engineered because it is unable to handle product inventory changes
- B. The model's hyperparameters should be periodically updated to prevent drift
- C. The model should be periodically retrained from scratch using the original data while adding a regularization term to handle product inventory changes
- D. The model should be periodically retrained using the original training data plus new data as product inventory changes

Answer: D

NEW QUESTION 21

A data science team is planning to build a natural language processing (NLP) application. The application's text preprocessing stage will include part-of-speech tagging and key phrase extraction. The preprocessed text will be input to a custom classification algorithm that the data science team has already written and trained using Apache MXNet.

Which solution can the team build MOST quickly to meet these requirements?

- A. Use Amazon Comprehend for the part-of-speech tagging, key phrase extraction, and classification tasks.
- B. Use an NLP library in Amazon SageMaker for the part-of-speech taggin
- C. Use Amazon Comprehend for the key phase extractio
- D. Use AWS Deep Learning Containers with Amazon SageMaker to build the custom classifier.
- E. Use Amazon Comprehend for the part-of-speech tagging and key phrase extraction task
- F. Use Amazon SageMaker built-in Latent Dirichlet Allocation (LDA) algorithm to build the custom classifier.
- G. Use Amazon Comprehend for the part-of-speech tagging and key phrase extraction task
- H. Use AWS Deep Learning Containers with Amazon SageMaker to build the custom classifier.

Answer: B

NEW QUESTION 24

A Machine Learning Specialist needs to move and transform data in preparation for training Some of the data needs to be processed in near-real time and other data can be moved hourly There are existing Amazon EMR MapReduce jobs to clean and feature engineering to perform on the data

Which of the following services can feed data to the MapReduce jobs? (Select TWO)

- A. AWS DMS
- B. Amazon Kinesis
- C. AWS Data Pipeline
- D. Amazon Athena
- E. Amazon ES

Answer: BC

Explanation:

<https://aws.amazon.com/jp/emr/?whats-new-cards.sort-by=item.additionalFields.postDateTime&whats-new-car>

NEW QUESTION 27

A large company has developed a B1 application that generates reports and dashboards using data collected from various operational metrics The company wants to provide executives with an enhanced experience so they can use natural language to get data from the reports The company wants the executives to be able ask questions using written and spoken interlaces

Which combination of services can be used to build this conversational interface? (Select THREE)

- A. Alexa for Business
- B. Amazon Connect
- C. Amazon Lex
- D. Amazon Poly
- E. Amazon Comprehend
- F. Amazon Transcribe

Answer: BEF

NEW QUESTION 31

An ecommerce company is automating the categorization of its products based on images. A data scientist has trained a computer vision model using the Amazon SageMaker image classification algorithm. The images for each product are classified according to specific product lines. The accuracy of the model is too low when categorizing new products. All of the product images have the same dimensions and are stored within an Amazon S3 bucket. The company wants to improve the model so it can be used for new products as soon as possible.

Which steps would improve the accuracy of the solution? (Choose three.)

- A. Use the SageMaker semantic segmentation algorithm to train a new model to achieve improved accuracy.
- B. Use the Amazon Rekognition DetectLabels API to classify the products in the dataset.
- C. Augment the images in the dataset
- D. Use open source libraries to crop, resize, flip, rotate, and adjust the brightness and contrast of the images.
- E. Use a SageMaker notebook to implement the normalization of pixels and scaling of the image
- F. Store the new dataset in Amazon S3.
- G. Use Amazon Rekognition Custom Labels to train a new model.
- H. Check whether there are class imbalances in the product categories, and apply oversampling or undersampling as require
- I. Store the new dataset in Amazon S3.

Answer: BCE

NEW QUESTION 36

A company is using Amazon Polly to translate plaintext documents to speech for automated company announcements. However, company acronyms are being mispronounced in the current documents. How should a Machine Learning Specialist address this issue for future documents'?

- A. Convert current documents to SSML with pronunciation tags
- B. Create an appropriate pronunciation lexicon.
- C. Output speech marks to guide in pronunciation
- D. Use Amazon Lex to preprocess the text files for pronunciation

Answer: A

NEW QUESTION 37

A Machine Learning Specialist is configuring Amazon SageMaker so multiple Data Scientists can access notebooks, train models, and deploy endpoints. To ensure the best operational performance, the Specialist needs to be able to track how often the Scientists are deploying models, GPU and CPU utilization on the deployed SageMaker endpoints, and all errors that are generated when an endpoint is invoked.

Which services are integrated with Amazon SageMaker to track this information? (Select TWO.)

- A. AWS CloudTrail
- B. AWS Health
- C. AWS Trusted Advisor
- D. Amazon CloudWatch
- E. AWS Config

Answer: AD

NEW QUESTION 42

A Machine Learning Specialist is building a convolutional neural network (CNN) that will classify 10 types of animals. The Specialist has built a series of layers in a neural network that will take an input image of an animal, pass it through a series of convolutional and pooling layers, and then finally pass it through a dense and fully connected layer with 10 nodes. The Specialist would like to get an output from the neural network that is a probability distribution of how likely it is that the input image belongs to each of the 10 classes.

Which function will produce the desired output?

- A. Dropout
- B. Smooth L1 loss
- C. Softmax
- D. Rectified linear units (ReLU)

Answer: C

NEW QUESTION 46

A real estate company wants to create a machine learning model for predicting housing prices based on a historical dataset. The dataset contains 32 features. Which model will meet the business requirement?

- A. Logistic regression
- B. Linear regression
- C. K-means
- D. Principal component analysis (PCA)

Answer: B

NEW QUESTION 50

A Machine Learning Specialist is deciding between building a naive Bayesian model or a full Bayesian network for a classification problem. The Specialist computes the Pearson correlation coefficients between each feature and finds that their absolute values range between 0.1 to 0.95. Which model describes the underlying data in this situation?

- A. A naive Bayesian model, since the features are all conditionally independent.
- B. A full Bayesian network, since the features are all conditionally independent.
- C. A naive Bayesian model, since some of the features are statistically dependent.
- D. A full Bayesian network, since some of the features are statistically dependent.

Answer: C

NEW QUESTION 55

A manufacturing company has structured and unstructured data stored in an Amazon S3 bucket. A Machine Learning Specialist wants to use SQL to run queries on this data. Which solution requires the LEAST effort to be able to query this data?

- A. Use AWS Data Pipeline to transform the data and Amazon RDS to run queries.
- B. Use AWS Glue to catalogue the data and Amazon Athena to run queries.
- C. Use AWS Batch to run ETL on the data and Amazon Aurora to run the queries.
- D. Use AWS Lambda to transform the data and Amazon Kinesis Data Analytics to run queries.

Answer: D

NEW QUESTION 60

A machine learning (ML) specialist wants to create a data preparation job that uses a PySpark script with complex window aggregation operations to create data for training and testing. The ML specialist needs to evaluate the impact of the number of features and the sample count on model performance. Which approach should the ML specialist use to determine the ideal data transformations for the model?

- A. Add an Amazon SageMaker Debugger hook to the script to capture key metric.
- B. Run the script as an AWS Glue job.
- C. Add an Amazon SageMaker Experiments tracker to the script to capture key metric.
- D. Run the script as an AWS Glue job.
- E. Add an Amazon SageMaker Debugger hook to the script to capture key parameter.
- F. Run the script as a SageMaker processing job.
- G. Add an Amazon SageMaker Experiments tracker to the script to capture key parameter.
- H. Run the script as a SageMaker processing job.

Answer: B

NEW QUESTION 65

Amazon Connect has recently been tolled out across a company as a contact call center. The solution has been configured to store voice call recordings on Amazon S3.

The content of the voice calls are being analyzed for the incidents being discussed by the call operators. Amazon Transcribe is being used to convert the audio to text, and the output is stored on Amazon S3.

Which approach will provide the information required for further analysis?

- A. Use Amazon Comprehend with the transcribed files to build the key topics.
- B. Use Amazon Translate with the transcribed files to train and build a model for the key topics.
- C. Use the AWS Deep Learning AMI with Gluon Semantic Segmentation on the transcribed files to train and build a model for the key topics.
- D. Use the Amazon SageMaker k-Nearest-Neighbors (kNN) algorithm on the transcribed files to generate a word embeddings dictionary for the key topics.

Answer: B

NEW QUESTION 66

A company uses a long short-term memory (LSTM) model to evaluate the risk factors of a particular energy sector. The model reviews multi-page text documents to analyze each sentence of the text and categorize it as either a potential risk or no risk. The model is not performing well, even though the Data Scientist has experimented with many different network structures and tuned the corresponding hyperparameters.

Which approach will provide the MAXIMUM performance boost?

- A. Initialize the words by term frequency-inverse document frequency (TF-IDF) vectors pretrained on a large collection of news articles related to the energy sector.
- B. Use gated recurrent units (GRUs) instead of LSTM and run the training process until the validation loss stops decreasing.
- C. Reduce the learning rate and run the training process until the training loss stops decreasing.
- D. Initialize the words by word2vec embeddings pretrained on a large collection of news articles related to the energy sector.

Answer: C

NEW QUESTION 70

A Data Scientist is developing a machine learning model to classify whether a financial transaction is fraudulent. The labeled data available for training consists of 100,000 non-fraudulent observations and 1,000 fraudulent observations.

The Data Scientist applies the XGBoost algorithm to the data, resulting in the following confusion matrix when the trained model is applied to a previously unseen validation dataset. The accuracy of the model is 99.1%, but the Data Scientist needs to reduce the number of false negatives.

Predicted	0	1
Actual	0 99,966 34	
	1	877 123

Which combination of steps should the Data Scientist take to reduce the number of false negative predictions by the model? (Choose two.)

- A. Change the XGBoost eval_metric parameter to optimize based on Root Mean Square Error (RMSE).
- B. Increase the XGBoost scale_pos_weight parameter to adjust the balance of positive and negative weights.
- C. Increase the XGBoost max_depth parameter because the model is currently underfitting the data.
- D. Change the XGBoost eval_metric parameter to optimize based on Area Under the ROC Curve (AUC).
- E. Decrease the XGBoost max_depth parameter because the model is currently overfitting the data.

Answer: BD

NEW QUESTION 73

A library is developing an automatic book-borrowing system that uses Amazon Rekognition. Images of library members' faces are stored in an Amazon S3 bucket. When members borrow books, the Amazon Rekognition CompareFaces API operation compares real faces against the stored faces in Amazon S3. The library needs to improve security by making sure that images are encrypted at rest. Also, when the images are used with Amazon Rekognition, they need to be encrypted in transit. The library also must ensure that the images are not used to improve Amazon Rekognition as a service. How should a machine learning specialist architect the solution to satisfy these requirements?

- A. Enable server-side encryption on the S3 bucket
- B. Submit an AWS Support ticket to opt out of allowing images to be used for improving the service, and follow the process provided by AWS Support.
- C. Switch to using an Amazon Rekognition collection to store the image
- D. Use the IndexFaces and SearchFacesByImage API operations instead of the CompareFaces API operation.
- E. Switch to using the AWS GovCloud (US) Region for Amazon S3 to store images and for Amazon Rekognition to compare face
- F. Set up a VPN connection and only call the Amazon Rekognition API operations through the VPN.
- G. Enable client-side encryption on the S3 bucket
- H. Set up a VPN connection and only call the Amazon Rekognition API operations through the VPN.

Answer: B

NEW QUESTION 75

A data scientist is training a text classification model by using the Amazon SageMaker built-in BlazingText algorithm. There are 5 classes in the dataset, with 300 samples for category A, 292 samples for category B, 240 samples for category C, 258 samples for category D, and 310 samples for category E. The data scientist shuffles the data and splits off 10% for testing. After training the model, the data scientist generates confusion matrices for the training and test sets.

Training data confusion matrix

		Predicted class					
		A	B	C	D	E	Total
True class	A	270	0	0	0	0	270
	B	1	260	0	0	2	263
	C	0	0	111	100	5	216
	D	4	3	132	92	1	232
	E	0	0	2	3	274	279
	Total	275	263	245	195	282	1260

Test data confusion matrix

		Predicted class					
		A	B	C	D	E	Total
True class	A	9	1	0	0	0	10
	B	2	25	0	2	0	29
	C	10	2	11	10	1	34
	D	1	0	12	14	0	27
	E	9	1	4	1	25	40
	Total	31	29	27	27	26	140

What could the data scientist conclude from these results?

- A. Classes C and D are too similar.
- B. The dataset is too small for holdout cross-validation.
- C. The data distribution is skewed.
- D. The model is overfitting for classes B and E.

Answer: B

NEW QUESTION 76

A company is building a line-counting application for use in a quick-service restaurant. The company wants to use video cameras pointed at the line of customers

at a given register to measure how many people are in line and deliver notifications to managers if the line grows too long. The restaurant locations have limited bandwidth for connections to external services and cannot accommodate multiple video streams without impacting other operations. Which solution should a machine learning specialist implement to meet these requirements?

- A. Install cameras compatible with Amazon Kinesis Video Streams to stream the data to AWS over the restaurant's existing internet connectio
- B. Write an AWS Lambda function to take an image and send it to Amazon Rekognition to count the number of faces in the imag
- C. Send an Amazon Simple Notification Service (Amazon SNS) notification if the line is too long.
- D. Deploy AWS DeepLens cameras in the restaurant to capture vide
- E. Enable Amazon Rekognition on the AWS DeepLens device, and use it to trigger a local AWS Lambda function when a person is recognize
- F. Use the Lambda function to send an Amazon Simple Notification Service (Amazon SNS) notification if the line is too long.
- G. Build a custom model in Amazon SageMaker to recognize the number of people in an imag
- H. Install cameras compatible with Amazon Kinesis Video Streams in the restauran
- I. Write an AWS Lambda function to take an imag
- J. Use the SageMaker endpoint to call the model to count peopl
- K. Send an Amazon Simple Notification Service (Amazon SNS) notification if the line is too long.
- L. Build a custom model in Amazon SageMaker to recognize the number of people in an imag
- M. Deploy AWS DeepLens cameras in the restauran
- N. Deploy the model to the camera
- O. Deploy an AWS Lambda function to the cameras to use the model to count people and send an Amazon Simple Notification Service (Amazon SNS) notification if the line is too long.

Answer: A

NEW QUESTION 79

A manufacturing company asks its Machine Learning Specialist to develop a model that classifies defective parts into one of eight defect types. The company has provided roughly 100000 images per defect type for training During the injial training of the image classification model the Specialist notices that the validation accuracy is 80%, while the training accuracy is 90% It is known that human-level performance for this type of image classification is around 90% What should the Specialist consider to fix this issue1?

- A. A longer training time
- B. Making the network larger
- C. Using a different optimizer
- D. Using some form of regularization

Answer: D

NEW QUESTION 81

A company that runs an online library is implementing a chatbot using Amazon Lex to provide book recommendations based on category. This intent is fulfilled by an AWS Lambda function that queries an Amazon DynamoDB table for a list of book titles, given a particular category. For testing, there are only three categories implemented as the custom slot types: "comedy," "adventure," and "documentary."

A machine learning (ML) specialist notices that sometimes the request cannot be fulfilled because Amazon Lex cannot understand the category spoken by users with utterances such as "funny," "fun," and "humor." The ML specialist needs to fix the problem without changing the Lambda code or data in DynamoDB. How should the ML specialist fix the problem?

- A. Add the unrecognized words in the enumeration values list as new values in the slot type.
- B. Create a new custom slot type, add the unrecognized words to this slot type as enumeration values, and use this slot type for the slot.
- C. Use the AMAZON.SearchQuery built-in slot types for custom searches in the database.
- D. Add the unrecognized words as synonyms in the custom slot type.

Answer: C

NEW QUESTION 83

A credit card company wants to build a credit scoring model to help predict whether a new credit card applicant will default on a credit card payment. The company has collected data from a large number of sources with thousands of raw attributes. Early experiments to train a classification model revealed that many attributes are highly correlated, the large number of features slows down the training speed significantly, and that there are some overfitting issues.

The Data Scientist on this project would like to speed up the model training time without losing a lot of information from the original dataset.

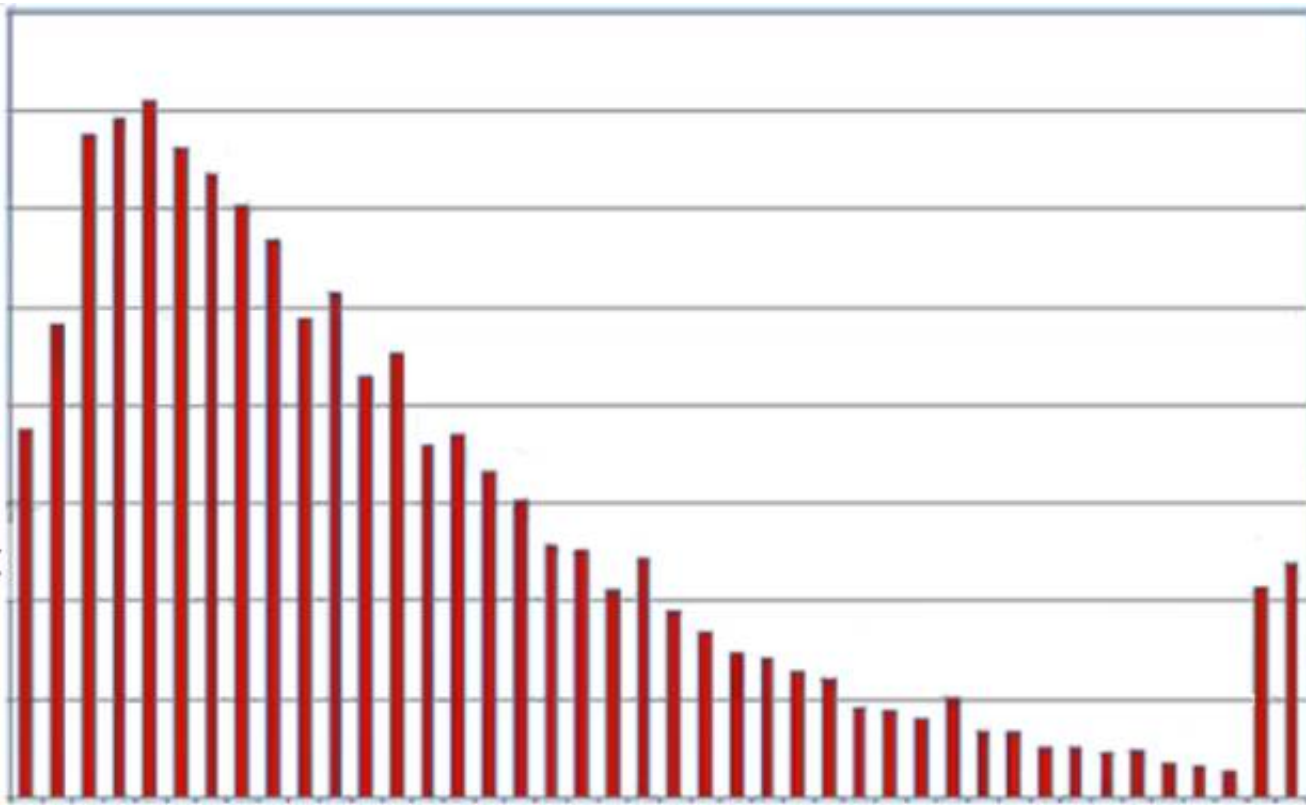
Which feature engineering technique should the Data Scientist use to meet the objectives?

- A. Run self-correlation on all features and remove highly correlated features
- B. Normalize all numerical values to be between 0 and 1
- C. Use an autoencoder or principal component analysis (PCA) to replace original features with new features
- D. Cluster raw data using k-means and use sample data from each cluster to build a new dataset

Answer: B

NEW QUESTION 84

A Data Scientist is building a linear regression model and will use resulting p-values to evaluate the statistical significance of each coefficient. Upon inspection of the dataset, the Data Scientist discovers that most of the features are normally distributed. The plot of one feature in the dataset is shown in the graphic.



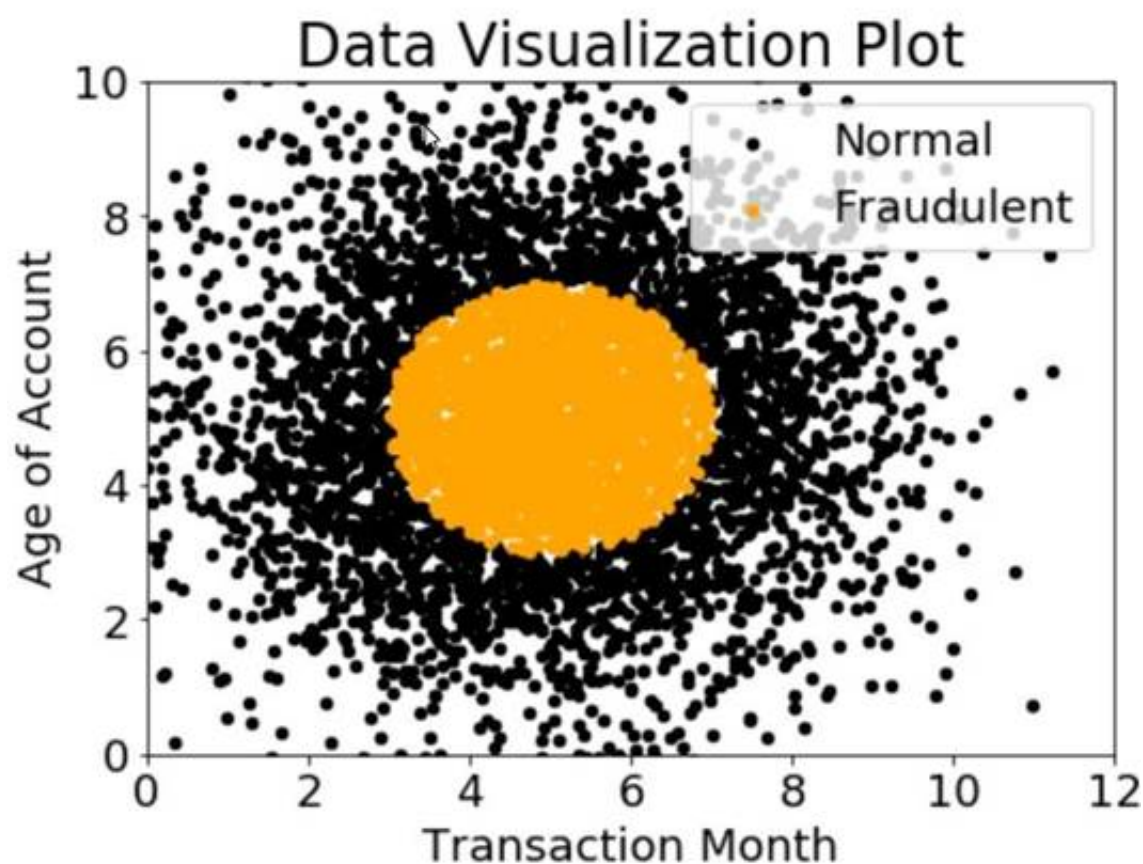
What transformation should the Data Scientist apply to satisfy the statistical assumptions of the linear regression model?

- A. Exponential transformation
- B. Logarithmic transformation
- C. Polynomial transformation
- D. Sinusoidal transformation

Answer: A

NEW QUESTION 88

A company wants to classify user behavior as either fraudulent or normal. Based on internal research, a Machine Learning Specialist would like to build a binary classifier based on two features: age of account and transaction month. The class distribution for these features is illustrated in the figure provided.



Based on this information, which model would have the HIGHEST recall with respect to the fraudulent class?

- A. Decision tree
- B. Linear support vector machine (SVM)
- C. Naive Bayesian classifier
- D. Single Perceptron with sigmoidal activation function

Answer: C

NEW QUESTION 89

A Data Engineer needs to build a model using a dataset containing customer credit card information. How can the Data Engineer ensure the data remains encrypted and the credit card information is secure?

- A. Use a custom encryption algorithm to encrypt the data and store the data on an Amazon SageMaker instance in a VP
- B. Use the SageMaker DeepAR algorithm to randomize the credit card numbers.
- C. Use an IAM policy to encrypt the data on the Amazon S3 bucket and Amazon Kinesis to automatically discard credit card numbers and insert fake credit card numbers.
- D. Use an Amazon SageMaker launch configuration to encrypt the data once it is copied to the SageMaker instance in a VP
- E. Use the SageMaker principal component analysis (PCA) algorithm to reduce the length of the credit card numbers.
- F. Use AWS KMS to encrypt the data on Amazon S3 and Amazon SageMaker, and redact the credit card numbers from the customer data with AWS Glue.

Answer: D

NEW QUESTION 92

A Machine Learning Specialist is building a prediction model for a large number of features using linear models, such as linear regression and logistic regression. During exploratory data analysis, the Specialist observes that many features are highly correlated with each other. This may make the model unstable. What should be done to reduce the impact of having such a large number of features?

- A. Perform one-hot encoding on highly correlated features.
- B. Use matrix multiplication on highly correlated features.
- C. Create a new feature space using principal component analysis (PCA).
- D. Apply the Pearson correlation coefficient.

Answer: B

NEW QUESTION 96

A Machine Learning Specialist trained a regression model, but the first iteration needs optimizing. The Specialist needs to understand whether the model is more frequently overestimating or underestimating the target. What option can the Specialist use to determine whether it is overestimating or underestimating the target value?

- A. Root Mean Square Error (RMSE)
- B. Residual plots
- C. Area under the curve
- D. Confusion matrix

Answer: B

NEW QUESTION 97

When submitting Amazon SageMaker training jobs using one of the built-in algorithms, which common parameters **MUST** be specified? (Select THREE.)

- A. The training channel identifying the location of training data on an Amazon S3 bucket.
- B. The validation channel identifying the location of validation data on an Amazon S3 bucket.
- C. The IAM role that Amazon SageMaker can assume to perform tasks on behalf of the users.
- D. Hyperparameters in a JSON array as documented for the algorithm used.
- E. The Amazon EC2 instance class specifying whether training will be run using CPU or GPU.
- F. The output path specifying where on an Amazon S3 bucket the trained model will persist.

Answer: CEF

NEW QUESTION 101

An employee found a video clip with audio on a company's social media feed. The language used in the video is Spanish. English is the employee's first language, and they do not understand Spanish. The employee wants to do a sentiment analysis. What combination of services is the **MOST** efficient to accomplish the task?

- A. Amazon Transcribe, Amazon Translate, and Amazon Comprehend
- B. Amazon Transcribe, Amazon Comprehend, and Amazon SageMaker seq2seq
- C. Amazon Transcribe, Amazon Translate, and Amazon SageMaker Neural Topic Model (NTM)
- D. Amazon Transcribe, Amazon Translate, and Amazon SageMaker BlazingText

Answer: A

NEW QUESTION 103

A Machine Learning Specialist is working with a large cybersecurity company that manages security events in real time for companies around the world. The cybersecurity company wants to design a solution that will allow it to use machine learning to score malicious events as anomalies on the data as it is being ingested. The company also wants to be able to save the results in its data lake for later processing and analysis. What is the **MOST** efficient way to accomplish these tasks'?

- A. Ingest the data using Amazon Kinesis Data Firehose, and use Amazon Kinesis Data Analytics Random Cut Forest (RCF) for anomaly detection. Then use Kinesis Data Firehose to stream the results to Amazon S3.
- B. Ingest the data into Apache Spark Streaming using Amazon EMR.
- C. and use Spark MLlib with k-means to perform anomaly detection. Then store the results in an Apache Hadoop Distributed File System (HDFS) using Amazon EMR with a replication factor of three as the data lake.
- D. Ingest the data and store it in Amazon S3. Use AWS Batch along with the AWS Deep Learning AMIs to train a k-means model using TensorFlow on the data in Amazon S3.
- E. Ingest the data and store it in Amazon S3. Have an AWS Glue job that is triggered on demand transform the new data. Then use the built-in Random Cut Forest (RCF) model within Amazon SageMaker to detect anomalies in the data.

Answer: A

NEW QUESTION 105

A retail company uses a machine learning (ML) model for daily sales forecasting. The company's brand manager reports that the model has provided inaccurate results for the past 3 weeks. At the end of each day, an AWS Glue job consolidates the input data that is used for the forecasting with the actual daily sales data and the predictions of the model. The AWS Glue job stores the data in Amazon S3. The company's ML team is using an Amazon SageMaker Studio notebook to gain an understanding about the source of the model's inaccuracies. What should the ML team do on the SageMaker Studio notebook to visualize the model's degradation **MOST** accurately?

- A. Create a histogram of the daily sales over the last 3 weeks.

- B. In addition, create a histogram of the daily sales from before that period.
- C. Create a histogram of the model errors over the last 3 week
- D. In addition, create a histogram of the model errors from before that period.
- E. Create a line chart with the weekly mean absolute error (MAE) of the model.
- F. Create a scatter plot of daily sales versus model error for the last 3 week
- G. In addition, create a scatter plot of daily sales versus model error from before that period.

Answer: C

NEW QUESTION 110

A company's Machine Learning Specialist needs to improve the training speed of a time-series forecasting model using TensorFlow. The training is currently implemented on a single-GPU machine and takes approximately 23 hours to complete. The training needs to be run daily. The model accuracy is acceptable, but the company anticipates a continuous increase in the size of the training data and a need to update the model on an hourly, rather than a daily, basis. The company also wants to minimize coding effort and infrastructure changes. What should the Machine Learning Specialist do to the training solution to allow it to scale for future demand?

- A. Do not change the TensorFlow code
- B. Change the machine to one with a more powerful GPU to speed up the training.
- C. Change the TensorFlow code to implement a Horovod distributed framework supported by Amazon SageMaker
- D. Parallelize the training to as many machines as needed to achieve the business goals.
- E. Switch to using a built-in AWS SageMaker DeepAR mode
- F. Parallelize the training to as many machines as needed to achieve the business goals.
- G. Move the training to Amazon EMR and distribute the workload to as many machines as needed to achieve the business goals.

Answer: B

NEW QUESTION 111

A Data Scientist is developing a machine learning model to classify whether a financial transaction is fraudulent. The labeled data available for training consists of 100,000 non-fraudulent observations and 1,000 fraudulent observations.

The Data Scientist applies the XGBoost algorithm to the data, resulting in the following confusion matrix when the trained model is applied to a previously unseen validation dataset. The accuracy of the model is 99.1%, but the Data Scientist has been asked to reduce the number of false negatives.

Predicted	0	1
Actual	0 99,966	34
	1	877 123

Which combination of steps should the Data Scientist take to reduce the number of false positive predictions by the model? (Select TWO.)

- A. Change the XGBoost eval_metric parameter to optimize based on rmse instead of error.
- B. Increase the XGBoost scale_pos_weight parameter to adjust the balance of positive and negative weights.
- C. Increase the XGBoost max_depth parameter because the model is currently underfitting the data.
- D. Change the XGBoost eval_metric parameter to optimize based on AUC instead of error.
- E. Decrease the XGBoost max_depth parameter because the model is currently overfitting the data.

Answer: DE

NEW QUESTION 114

A Data Scientist is training a multilayer perceptron (MLP) on a dataset with multiple classes. The target class of interest is unique compared to the other classes within the dataset, but it does not achieve an acceptable recall metric. The Data Scientist has already tried varying the number and size of the MLP's hidden layers, which has not significantly improved the results. A solution to improve recall must be implemented as quickly as possible.

Which techniques should be used to meet these requirements?

- A. Gather more data using Amazon Mechanical Turk and then retrain
- B. Train an anomaly detection model instead of an MLP
- C. Train an XGBoost model instead of an MLP
- D. Add class weights to the MLP's loss function and then retrain

Answer: C

NEW QUESTION 116

A logistics company needs a forecast model to predict next month's inventory requirements for a single item in 10 warehouses. A machine learning specialist uses Amazon Forecast to develop a forecast model from 3 years of monthly data. There is no missing data. The specialist selects the DeepAR+ algorithm to train a predictor. The predictor's mean absolute percentage error (MAPE) is much larger than the MAPE produced by the current human forecasters.

Which changes to the CreatePredictor API call could improve the MAPE? (Choose two.)

- A. Set PerformAutoML to true.
- B. Set ForecastHorizon to 4.
- C. Set ForecastFrequency to W for weekly.
- D. Set PerformHPO to true.
- E. Set FeaturizationMethodName to filling.

Answer: CD

NEW QUESTION 118

A Machine Learning Specialist wants to determine the appropriate SageMakerVariant Invocations Per Instance setting for an endpoint automatic scaling configuration. The Specialist has performed a load test on a single instance and determined that peak requests per second (RPS) without service degradation is

about 20 RPS As this is the first deployment, the Specialist intends to set the invocation safety factor to 0.5

Based on the stated parameters and given that the invocations per instance setting is measured on a per-minute basis, what should the Specialist set as the `sageMakerVariantInvocationsPerInstance` setting?

- A. 10
- B. 30
- C. 600
- D. 2,400

Answer: C

NEW QUESTION 120

A retail company is selling products through a global online marketplace. The company wants to use machine learning (ML) to analyze customer feedback and identify specific areas for improvement. A developer has built a tool that collects customer reviews from the online marketplace and stores them in an Amazon S3 bucket. This process yields a dataset of 40 reviews. A data scientist building the ML models must identify additional sources of data to increase the size of the dataset.

Which data sources should the data scientist use to augment the dataset of reviews? (Choose three.)

- A. Emails exchanged by customers and the company's customer service agents
- B. Social media posts containing the name of the company or its products
- C. A publicly available collection of news articles
- D. A publicly available collection of customer reviews
- E. Product sales revenue figures for the company
- F. Instruction manuals for the company's products

Answer: BDF

NEW QUESTION 123

A data scientist uses an Amazon SageMaker notebook instance to conduct data exploration and analysis. This requires certain Python packages that are not natively available on Amazon SageMaker to be installed on the notebook instance.

How can a machine learning specialist ensure that required packages are automatically available on the notebook instance for the data scientist to use?

- A. Install AWS Systems Manager Agent on the underlying Amazon EC2 instance and use Systems Manager Automation to execute the package installation commands.
- B. Create a Jupyter notebook file (.ipynb) with cells containing the package installation commands to execute and place the file under the `/etc/init` directory of each Amazon SageMaker notebook instance.
- C. Use the conda package manager from within the Jupyter notebook console to apply the necessary conda packages to the default kernel of the notebook.
- D. Create an Amazon SageMaker lifecycle configuration with package installation commands and assign the lifecycle configuration to the notebook instance.

Answer: D

Explanation:

<https://docs.aws.amazon.com/sagemaker/latest/dg/nbi-add-external.html>

NEW QUESTION 126

A Machine Learning Specialist has built a model using Amazon SageMaker built-in algorithms and is not getting expected accurate results. The Specialist wants to use hyperparameter optimization to increase the model's accuracy.

Which method is the MOST repeatable and requires the LEAST amount of effort to achieve this?

- A. Launch multiple training jobs in parallel with different hyperparameters
- B. Create an AWS Step Functions workflow that monitors the accuracy in Amazon CloudWatch Logs and relaunches the training job with a defined list of hyperparameters
- C. Create a hyperparameter tuning job and set the accuracy as an objective metric.
- D. Create a random walk in the parameter space to iterate through a range of values that should be used for each individual hyperparameter

Answer: B

NEW QUESTION 127

A company is using Amazon Textract to extract textual data from thousands of scanned text-heavy legal documents daily. The company uses this information to process loan applications automatically. Some of the documents fail business validation and are returned to human reviewers, who investigate the errors. This activity increases the time to process the loan applications.

What should the company do to reduce the processing time of loan applications?

- A. Configure Amazon Textract to route low-confidence predictions to Amazon SageMaker Ground Truth. Perform a manual review on those words before performing a business validation.
- B. Use an Amazon Textract synchronous operation instead of an asynchronous operation.
- C. Configure Amazon Textract to route low-confidence predictions to Amazon Augmented AI (AmazonA2I). Perform a manual review on those words before performing a business validation.
- D. Use Amazon Rekognition's feature to detect text in an image to extract the data from scanned images. Use this information to process the loan applications.

Answer: C

NEW QUESTION 131

A Machine Learning Specialist is assigned to a Fraud Detection team and must tune an XGBoost model, which is working appropriately for test data. However, with unknown data, it is not working as expected. The existing parameters are provided as follows.

```
param = {
    'eta': 0.05, # the training step for each iteration
    'silent': 1, # logging mode - quiet
    'n_estimators': 2000,
    'max_depth': 30,
    'min_child_weight': 3,
    'gamma': 0,
    'subsample': 0.8,
    'objective': 'multi:softprob', # error evaluation for multiclass training
    'num_class': 201} # the number of classes that exist in this dataset
num_round = 60 # the number of training iterations
```

Which parameter tuning guidelines should the Specialist follow to avoid overfitting?

- A. Increase the max_depth parameter value.
- B. Lower the max_depth parameter value.
- C. Update the objective to binary:logistic.
- D. Lower the min_child_weight parameter value.

Answer: B

NEW QUESTION 136

A manufacturing company has structured and unstructured data stored in an Amazon S3 bucket. A Machine Learning Specialist wants to use SQL to run queries on this data.

Which solution requires the LEAST effort to be able to query this data?

- A. Use AWS Data Pipeline to transform the data and Amazon RDS to run queries.
- B. Use AWS Glue to catalogue the data and Amazon Athena to run queries.
- C. Use AWS Batch to run ETL on the data and Amazon Aurora to run the queries.
- D. Use AWS Lambda to transform the data and Amazon Kinesis Data Analytics to run queries.

Answer: B

NEW QUESTION 141

A Machine Learning Specialist is developing recommendation engine for a photography blog. Given a picture, the recommendation engine should show a picture that captures similar objects. The Specialist would like to create a numerical representation feature to perform nearest-neighbor searches.

What actions would allow the Specialist to get relevant numerical representations?

- A. Reduce image resolution and use reduced resolution pixel values as features.
- B. Use Amazon Mechanical Turk to label image content and create a one-hot representation indicating the presence of specific labels.
- C. Run images through a neural network pre-trained on ImageNet, and collect the feature vectors from the penultimate layer.
- D. Average colors by channel to obtain three-dimensional representations of images.

Answer: A

NEW QUESTION 145

For the given confusion matrix, what is the recall and precision of the model?

		Actual	
		Yes	No
Predicted	Yes	12	3
	No	1	9

- A. Recall = 0.92 Precision = 0.84
- B. Recall = 0.84 Precision = 0.8
- C. Recall = 0.92 Precision = 0.8
- D. Recall = 0.8 Precision = 0.92

Answer: C

NEW QUESTION 147

.....

Thank You for Trying Our Product

* **100% Pass or Money Back**

All our products come with a 90-day Money Back Guarantee.

* **One year free update**

You can enjoy free update one year. 24x7 online support.

* **Trusted by Millions**

We currently serve more than 30,000,000 customers.

* **Shop Securely**

All transactions are protected by VeriSign!

100% Pass Your AWS-Certified-Machine-Learning-Specialty Exam with Our Prep Materials Via below:

<https://www.certleader.com/AWS-Certified-Machine-Learning-Specialty-dumps.html>