

Exam Questions MS-721

Collaboration Communications Systems Engineer

<https://www.2passeasy.com/dumps/MS-721/>



NEW QUESTION 1

- (Exam Topic 1)

You are configuring the new call queue to replace the response group.

Which setting should you disable to ensure that the agents can receive calls from the call queue?

- A. Music on hold
- B. Attendant routing
- C. Conference mode
- D. Round robin

Answer: C

NEW QUESTION 2

- (Exam Topic 1)

You need to recommend a PSTN solution for the Teams Phone deployment at the retail sites. The solution must meet the technical requirements.

What should you include in the recommendation?

- A. Teams Calling Plans
- B. Direct Routing without media bypass
- C. Operator Connect
- D. Direct Routing with media bypass

Answer: C

Explanation:

Reference:

<https://docs.microsoft.com/en-us/microsoftteams/pstn-connectivity>

NEW QUESTION 3

- (Exam Topic 2)

You need to recommend network design changes that must be implemented before the Skype for Business Server to Microsoft Teams migration.

What should you recommend for the Vancouver facility users and the remote sale team users? To answer, drag the appropriate recommendation to the correct users. Each recommendation may be used once, more than once, or not at all. You may need to drag the split bar between panes or scroll to view content

NOTE: Each correct selection is worth one point.

Recommendations

- Decrease the NAT pool size.
- Implement VPN split tunneling.
- Deploy a local internet connection.
- Implement a web proxy server for media traffic.
- Force TCP instead of UDP for the media traffic of Teams.

Answer Area

Vancouver facility users:

Remote users:

- A. Mastered
- B. Not Mastered

Answer: A

Explanation:

A white rectangular object with blue dots and black text Description automatically generated

Reference:

<https://docs.microsoft.com/en-us/powershell/module/skype/set-cscallinglineidentity?view=skype-ps>

NEW QUESTION 4

- (Exam Topic 2)

You need to configure a toll-free dial in bridge for Teams meetings. The solution must meet the technical requirements.

Which three prerequisites must be met before you can assign the toll-free bridge to Teams meeting organizers? Each correct answer presents part of the solution.

NOTE: Each correct selection is worth one point.

- A. Purchase Communications Credits.
- B. Assign a phone number to a resource account.
- C. Get an auto attendant toll-free number.
- D. Get a Dedicated conference bridge (Toll Free) number.
- E. Purchase a Microsoft 365 Domestic and International Calling Plan license.
- F. From the meeting policy, set Allow dial -in users to bypass the lobby to On.
- G. Assign a phone number to the bridge.

Answer: ADG

Explanation:

Reference:

<https://docs.microsoft.com/en-us/microsoftteams/set-up-audio-conferencing-in-teams>

NEW QUESTION 5

- (Exam Topic 3)

You have a Microsoft Teams Phone deployment that uses Direct Routing. You need to implement Local Media Optimization. In the Microsoft Teams admin center, you configure the external trusted IP addresses and define the network regions, network sites, and network subnets. What should you do next?

- A. Define a voice route.
- B. Assign Session Border Controllers (SBCs) to sites.
- C. Create a trunk translation rule.
- D. Modify the default emergency calling policy

Answer: B

Explanation:

Reference:
https://docs.microsoft.com/en-us/microsoftteams/direct-routing-media-optimization-configure

NEW QUESTION 6

- (Exam Topic 3)

You have two users named User1 and User2. You need to configure User2 as a call delegate for Uset1. The solution must meet the following requirements:

- Minimize disruptions to User1.
- Prevent User2 from placing cans on behalf of User1.
- Prevent User2 from modifying the settings of User1.

Which three actions should you perform in sequence? To answer, move the appropriate actions from the list of actions to the answer area and arrange them in the correct order.

Actions

Instruct User1 to sign in to the Microsoft Teams client, establish a remote session to his computer, and then configure the delegation settings in the Teams client.

For User2, set Permission to **Make and receive calls**.

From the Microsoft Teams admin center, select **Voice**, select **Phone numbers**, and then select the phone number of User1.

From Users in the Microsoft Teams admin center, open the settings of User1, and then select the **Voice** tab.

From Users in the Microsoft Teams admin center, open the settings of User2, and then select the **Voice** tab.

For User2, set Permission to **Receive calls**, and then set Allow changing call settings to **Off**.

Answer Area

- A. Mastered
- B. Not Mastered

Answer: A

Explanation:

Actions

Instruct User1 to sign in to the Microsoft Teams client, establish a remote session to his computer, and then configure the delegation settings in the Teams client.

For User2, set Permission to **Make and receive calls**.

From the Microsoft Teams admin center, select **Voice**, select **Phone numbers**, and then select the phone number of User1.

From Users in the Microsoft Teams admin center, open the settings of User1, and then select the **Voice** tab.

From Users in the Microsoft Teams admin center, open the settings of User2, and then select the **Voice** tab.

For User2, set Permission to **Receive calls**, and then set Allow changing call settings to **Off**.

Answer Area

From the Microsoft Teams admin center, select **Voice**, select **Phone numbers**, and then select the phone number of User1.

For User2, set Permission to **Receive calls**, and then set Allow changing call settings to **Off**.

Instruct User1 to sign in to the Microsoft Teams client, establish a remote session to his computer, and then configure the delegation settings in the Teams client.

NEW QUESTION 7

- (Exam Topic 3)

You are deploying Microsoft Teams Calling Plans to three users as shown in the following table.

Passing Certification Exams Made Easy

visit - https://www.2PassEasy.com

Name	License	Phone number	Reported issue
User1	Office 365 E3 Microsoft 365 Phone System Microsoft 365 Domestic Calling Plan	Unassigned	There is no dial pad in the Teams client.
User2	Office 365 E5 Microsoft 365 Domestic Calling Plan	Assigned	The user cannot dial four- digit numbers but can dial E.164 numbers.
User3	Office 365 E3 Microsoft 365 Domestic Calling Plan	Assigned	The dial pad in the Teams client recently disappeared.

You need to resolve the issues.

What should you assign to each user? To answer, select the appropriate options in the answer area.

NOTE: Each correct selection is worth one point.

Answer Area

User1:

▼

A calling policy
A dial plan
A Microsoft 365 Domestic Calling Plan license
A Microsoft 365 Phone System license
A phone number
An OnPremLineURIvalue

User2:

▼

A calling policy
A dial plan
A Microsoft 365 Domestic Calling Plan license
A Microsoft 365 Phone System license
A phone number
An OnPremLineURIvalue

User3:

▼

A calling policy
A dial plan
A Microsoft 365 Domestic Calling Plan license
A Microsoft 365 Phone System license
A phone number
An OnPremLineURIvalue

- A. Mastered
- B. Not Mastered

Answer: A

Explanation:

Graphical user interface, text, application Description automatically generated
Table Description automatically generated

NEW QUESTION 8

- (Exam Topic 3)

Your company uses configuration profiles to manage Microsoft Teams-certified IP phones. The Standard configuration profile is applied to the IP phones. The help desk receives reports that several user phones fail to lock automatically after the timeout period. You need to verify whether the configuration profile is

applied to the problematic phones.

Solution: From Devices in the Microsoft Teams admin center, you locate each affected phone and review the settings on the Details tab.

Does this meet the goal?

- A. Yes
- B. No

Answer: B

NEW QUESTION 9

- (Exam Topic 3)

You have Microsoft Teams Phone handsets.

You need to receive an alert when a handset of an executive goes offline. What should you do in the Microsoft Team admin center?

- A. Create a Teams app setup policy and assign the policy to all executives.
- B. Create a configuration profile for IP phones.
- C. Register the handsets by using remote provisioning.
- D. Modify the device state rule.

Answer: D

Explanation:

Reference:

<https://docs.microsoft.com/en-us/microsoftteams/alerts/device-health-status>

NEW QUESTION 10

- (Exam Topic 3)

Your company deploys 200 Microsoft Teams Rooms on Windows systems.

You are evaluating whether to purchase the Microsoft Teams Rooms Premium license for the rooms. Which two actions require the Microsoft Teams Rooms Premium license? Each correct answer presents a complete solution.

NOTE: Each correct selection is worth one point

- A. Download device logs.
- B. View peripheral health.
- C. Get reporting insights into room usage and participant count
- D. Postpone updates until a certain date.
- E. Modify the Direct guest jam settings

Answer: BC

Explanation:

Reference: <https://docs.microsoft.com/en-us/microsoftteams/rooms/microsoft-teams-rooms-premium>

NEW QUESTION 10

- (Exam Topic 3)

You have a Microsoft Teams Phone deployment

You use Direct Routing with a Survivable Branch Appliance (SBA) at a site. The site experiences an extended internet outage.

Which three PSTN calling scenarios are possible during the outage? Each coned answer presents a complete solution.

NOTE: Each correct selection is worth one point.

- A. dynamic emergency calling
- B. outbound PSTN calls
- C. inbound PSTN calls
- D. call transfer of PSTN calls
- E. hold and resume of PSTN calls

Answer: ABC

Explanation:

Reference:

<https://docs.microsoft.com/en-us/skypeforbusiness/plan-your-deployment/enterprise-voice-solution/enterprise-v>

NEW QUESTION 11

- (Exam Topic 3)

You are selecting devices for use in conference rooms. The conference rooms must support two front of room displays.

Which two types of devices meet the requirements? Each correct answer presents a complete solution. NOTE: Each correct selection is worth one point.

- A. Microsoft Teams Rooms on Android
- B. Microsoft Teams displays
- C. Microsoft Teams audio conference phones
- D. Microsoft Teams Rooms on Windows
- E. Microsoft Surface Hub 2S

Answer: AD

Explanation:

Reference:

<https://docs.microsoft.com/en-us/microsoftteams/rooms/teams-devices-feature-comparison>

NEW QUESTION 13

- (Exam Topic 3)

```
PS C:\> get csonlineuser -Identity user1@litwareinc.com

DisplayName           : User One
EnterpriseVoiceEnabled : True
RegistrarPool         : sippoolme1au103.infra.lync.com
OnPremLineURIManuallySet : False
OnPremLineURI         :
LineURI               : +61370105555
OnlineVoiceRoutingPolicy : VIC-All
DialPlan               : AU
TenantDialPlan         : Australia-VIC
MCOVaildationError     : {}
VoicePolicy            :
InterpretedUserType     : HybridOnlineTeamsOnlyUser
UserProvisionType       :
TeamsUpgradeEffectiveMode : TeamsOnly
```

You have a Microsoft Teams Phone deployment. The 613 7010 5XXX phone number range is allocated to the Session Border Controller (SBC). A user named User1 is configured as shown in the following exhibit.

User1 reports that when an external caller attempts to call the phone number of User1, the external caller receives an error message.

User1 can make outbound calls, but no caller ID appears.

Which two commands should you run to resolve the issues? Each correct answer presents part of the solution. NOTE: Each correct selection is worth one point.

- A)
`Remove-CsPhoneNumberAssignment -Identity user1@litwareinc.com -PhoneNumber +61370105555 -PhoneNumberType CallingPlan`
- B)
`Set-CsPhoneNumberAssignment -Identity user1@litwareinc.com -PhoneNumber +61370105555 -PhoneNumberType DirectRouting`
- C)
`Set-CsOnlineVoiceUser user1@litwareinc.com -TelephoneNumber "+61370105555"`
- D)
`Set-CsUser user1@litwareinc.com -EnterpriseVoiceEnabled $false`
- E)
`Grant-CsOnlineVoiceRoutingPolicy -Identity user1@litwareinc.com -PolicyName $null`

- A. Option A
- B. Option B
- C. Option C
- D. Option D
- E. Option E

Answer: CD

NEW QUESTION 18

- (Exam Topic 3)

You have a Teams Phone deployment that uses Direct Routing and a legacy PBX.

You need to leverage the a PBX during outbound calls from scheduled Teams meeting. What should you create?

- A. an Audio Conferencing policy
- B. an Audio Conferencing routing policy
- C. a meeting broadcast policy

Answer: B

Explanation:

Enable the routing of Teams meeting dial-out calls through Direct Routing

Teams meeting dial-out calls are initiated from within a meeting in your organization to PSTN numbers, including call-me-at calls and calls to bring new participants to a meeting.

To enable Teams meeting dial-out routing through Direct Routing to on-network users, you need to create and assign an Audio Conferencing routing policy called "OnlineAudioConferencingRoutingPolicy".

Note:

Direct Routing lets you connect a supported, customer-provided Session Border Controller (SBC) to Phone System. With this capability, you can configure on-premises Public Switched Telephone Network (PSTN) connectivity with Microsoft Teams client, as shown in the following diagram:



Reference:

<https://learn.microsoft.com/en-us/microsoftteams/audio-conferencing-on-network> <https://learn.microsoft.com/en-us/microsoftteams/direct-routing-plan>

NEW QUESTION 19

- (Exam Topic 3)

Note: This question is part of a series of questions that present the same scenario. Each question in the series contains a unique solution that might meet the stated goals. Some question sets might have more than one correct solution, while others might not have a correct solution.

After you answer a question in this section, you will NOT be able to return to it. As a result, these questions will not appear in the review screen.

You need to create a new call queue to route calls to support agents. The support agents must be able to see their call queue history and the shared transcribed voicemail. The solution must minimize administrative effort.

Solution: You set the routing method for the call queue to Attendant routing. Does this meet the goal?

- A. Yes
- B. No

Answer: B

Explanation:

Reference:

<https://www.orbid365.be/shared-voicemail-arrives-in-teams/>

NEW QUESTION 20

- (Exam Topic 3)

You need to provide Microsoft Teams users with the ability to perform PSTN calling through a Session Border Controller (SBC). Which licenses can you assign to achieve the goal?

- A. Office 365 E3 and Office 365 E5
- B. Microsoft 365 E3 and Microsoft 365 E5
- C. Microsoft 365 E5 and Office 365 E5
- D. Office 365 E3 and Microsoft 365 E3

Answer: D

NEW QUESTION 23

- (Exam Topic 3)

You are adding new sites to your company.

The reporting team needs location-based reports in Microsoft Power BI that include the subnet information of the new sites.

You need to add the information to Microsoft Teams. What should you do?

- A. From the Microsoft Call Quality Dashboard, upload tenant data.
- B. From the Microsoft Teams admin center, define a network subnet.
- C. From the Microsoft Teams admin center, define a network topology.
- D. From the Microsoft Teams admin center, add the subnets to the Network planner.

Answer: A

Explanation:

Reference: <https://docs.microsoft.com/en-us/microsoftteams/cqd-upload-tenant-building-data>

NEW QUESTION 27

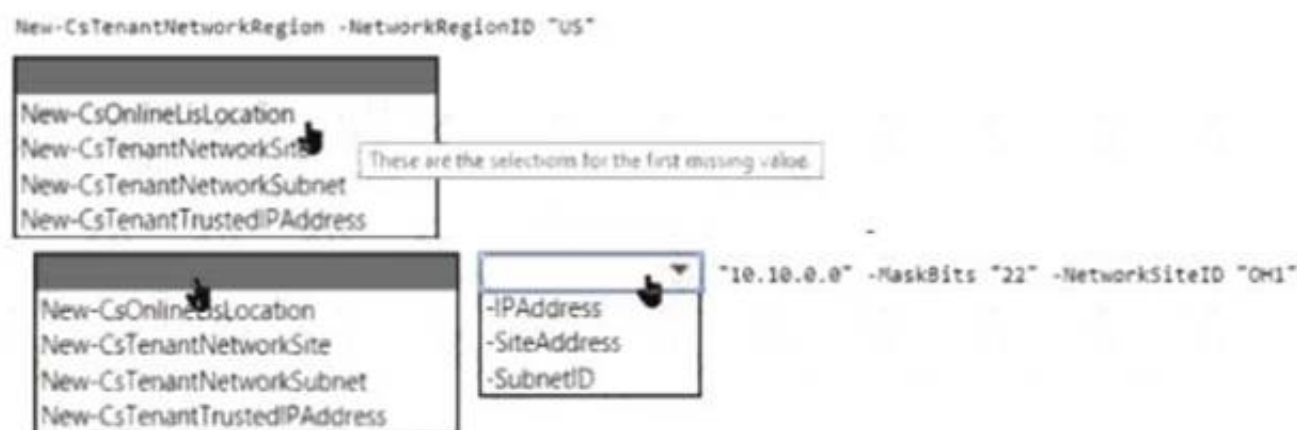
- (Exam Topic 3)

You have a Microsoft Teams Phone deployment You are implementing dynamic emergency calling.

You need to define a network topology for the implementation.

How should you complete the PowerShell script? To answer, select the appropriate options in the answer area. NOTE: Each correct selection a worth one point

Answer Area



- A. Mastered
- B. Not Mastered

Answer: A

Explanation:

Answer Area



NEW QUESTION 29

- (Exam Topic 3)

You have a Microsoft Teams Phone deployment.

You need to implement Local Media Optimization for Direct Routing users at a site. Users at the site frequently perform the following actions:

- A) Park calls.
- B) Transfer calls to other users.
- C) Escalate calls to conference calls.
- D) Place calls on hold.

Which action will be affected by implementing Local Media Optimization?

- A. Park calls.
- B. Place calls on hold.
- C. Transfer calls to other users.
- D. Escalate calls to conference calls

Answer: C

Explanation:

Reference:

<https://docs.microsoft.com/en-us/microsoftteams/direct-routing-media-optimization#known-issues>

NEW QUESTION 30

- (Exam Topic 3)

Note: This question is part of a series of questions that present the same scenario. Each question in the series contains a unique solution that might meet the stated goals. Some question sets might have more than one correct solution, while others might not have a correct solution.

After you answer a question in this section, you will NOT be able to return to it. As a result, these questions will not appear in the review screen.

Your company uses Microsoft Teams Calling Plans.

The company acquires a small development team. Currently, users on the team have their own direct inward dial (DID) numbers that have PSTN capabilities.

You migrate the users to Teams.

You need to ensure that the users have phone numbers.

Solution: From the Microsoft Teams admin center, you create a new port order. Does this meet the goal?

- A. Yes
- B. No

Answer: A

Explanation:

Reference:

<https://docs.microsoft.com/en-us/microsoftteams/phone-number-calling-plans/transfer-phone-numbers-to-teams>

NEW QUESTION 35

- (Exam Topic 3)

Your company hires a new employee in Lisbon.

You assign a Microsoft 365 E3 license to the employee.

The employee must schedule meetings that will include customers in Lisbon. The customers will dial in to the meetings by using PSTN.

You need to ensure that the employee can send meeting invitations that include a dial-in conferencing bridge. The bridge must be set to a local number in Lisbon instead of the company's default dial-in conferencing bridge number.

Which two actions should you perform? Each correct answer presents part of the solution. NOTE: Each correct selection is worth one point.

A. From Users in the Microsoft Teams admin center, edit the Audio conferencing settings of the employee.

B. From the Microsoft Teams admin center, modify the settings of the default conferencing bridge.

C. From the Microsoft 365 admin center, assign an Auto Conferencing add-on license to the employee.

D. From the Microsoft 365 admin center, set the usage location of the employee to Portugal.

Answer: BC

Explanation:

Reference:

<https://docs.microsoft.com/en-us/microsoftteams/audio-conferencing-in-office-365> <https://docs.microsoft.com/en-us/microsoftteams/change-the-phone-numbers-on-your-audio-conferencing-bridg>

NEW QUESTION 37

- (Exam Topic 3)

You have a Microsoft Teams Phone deployment that uses Direct Routing. You connect a new Session Border Controller (SBC).

You need to verify that all the voice features work as expected for calls that traverse the SBC. What should you use?

A. the SIP Tester client script

B. Microsoft 365 network connectivity test tool

C. Microsoft Teams Network Assessment Tool

D. Microsoft Remote Connectivity Analyzer

Answer: A

NEW QUESTION 39

- (Exam Topic 3)

You have a Teams Phone deployment.

You are designing a meeting space that contains a Teams certified conference phone. You need to configure the phone to meet the following requirements:

Show the calendar on the display by default Support one-touch join for Teams meetings

Which two actions should you perform? Each correct answer presents part of the solution. NOTE: Each correct selection is worth one point.

A. Create and assign a Teams IP phone policy

B. Assign a Microsoft Teams Rooms Pro license to the phone

C. Assign a Shared Device license to the phone

D. Create and assign an Audio Conferencing policy

E. Enable the Cloud Video Interop for Teams service

Answer: BD

Explanation:

B: Teams Rooms license service plan comparison

The following table shows the services included in each Teams Rooms license.

	Microsoft Teams Rooms Basic	Microsoft Teams Rooms Pro
Maximum number of licenses	25	Unlimited
Microsoft Teams	✓	✓
Audio Conferencing ¹	✓	✓
Whiteboard	✓	✓
Teams Phone		✓
Microsoft Intune ²		✓
Azure Active Directory Premium Plan 1		✓
Skype for Business Plan 2 ³		✓

Note: Microsoft Teams Rooms licenses

Microsoft offers two licenses for Teams Rooms systems that participate in Teams meetings and calls: Microsoft Teams Rooms Pro delivers enhanced in-room meeting experiences like intelligent audio and video, front row and large galleries, and dual screen support. The Teams Rooms Pro license also provides advanced management features like remote device management, conditional access policies, and detailed device analytics.

Teams Rooms Pro is a great fit for medium and enterprise organizations, as well as smaller organizations with larger room counts or more advanced needs.

Teams Rooms Pro licenses can be used to license both certified Teams Rooms systems and Teams Panels.

Microsoft Teams Rooms Basic provides core meeting experiences to organizations that purchase a certified Microsoft Teams Rooms system, at no additional cost. The Teams Rooms Basic license includes scheduling, joining meetings, content sharing, and collaborative white boarding, as well as basic security and management capabilities out-of-the-box.

Incorrect: Not C:

Microsoft Teams Shared Devices licenses aren't supported on and won't work with Teams Rooms devices. Teams Rooms devices should only be assigned Teams Rooms Basic or Teams Rooms Pro licenses.

Not E: Cloud Video Interop (CVI) is a Microsoft Qualified third-party solution that enables third-party meeting rooms (telepresence) and personal video devices (VTCs) to join Microsoft Teams meetings.

With Microsoft Teams, you get rich online content collaboration in meetings that include audio, video, and content sharing.

Reference:

https://learn.microsoft.com/en-us/microsoftteams/rooms/rooms-licensing

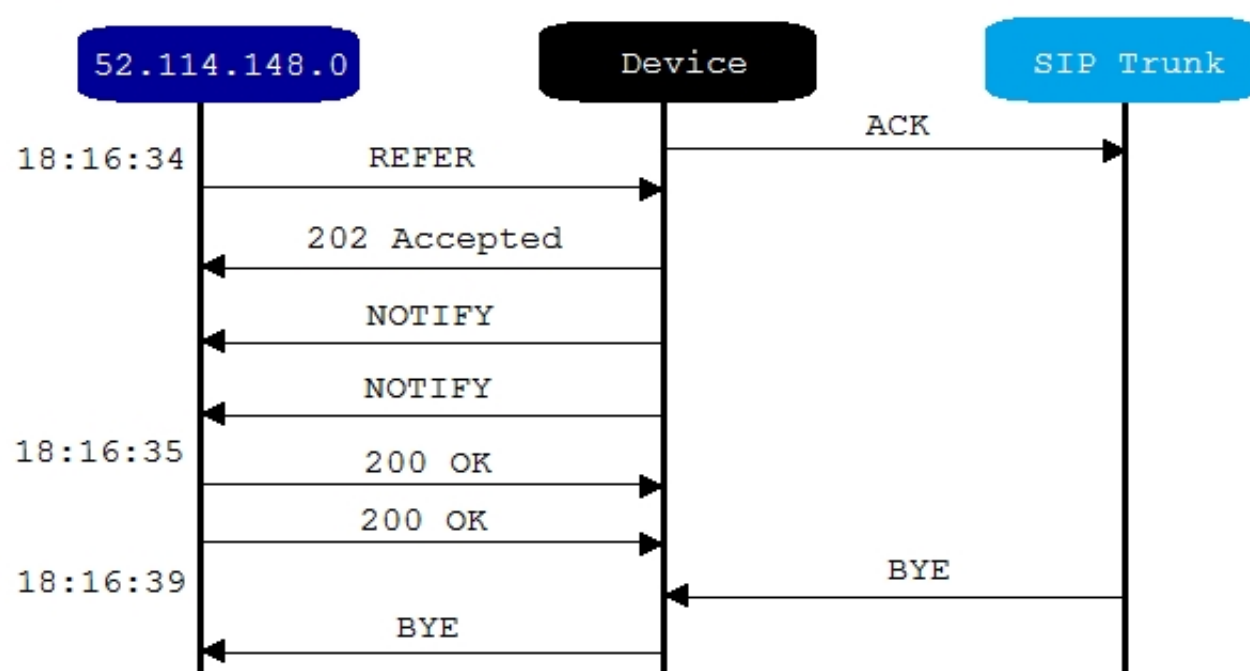
NEW QUESTION 44

- (Exam Topic 3)

Your company has a Microsoft Teams Phone deployment that uses Direct Routing and a single carrier. You deploy a new Session Border Controller (SBC) that shows as healthy in the Microsoft Teams admin center.

You place a test call over the new SBC, and the call succeeds.

When you attempt to transfer the call, the transfer fails. A portion of the SIP ladder is shown in the exhibit. (Click the Exhibit tab.)



What is a possible cause of the issue?

- A. The SSL certificate of the SBC is incorrect.
- B. The Refer on the SBC is misconfigured.
- C. notify is enabled in the SIP options of the SBC.
- D. The carrier rejects the format of the forwarded FROM number.

Answer: B

Explanation:

Reference:

https://docs.microsoft.com/en-us/microsoftteams/troubleshoot/phone-system/direct-routing/issues-with-call-tran

NEW QUESTION 46

- (Exam Topic 3)

You have a Microsoft Teams Phone deployment. Direct Routing is enabled for all users. The users can place and receive PSTN calls. You are implementing emergency numbers in Teams.

You need to remove the + symbol from any three-digit calls to the Session Border Controller (SBC)..

How should you complete the PowerShell script? To answer, drag the appropriate values to the correct targets. Each value may be used once, more than once, or not at all. You may need to drag the split bar between panes or scroll to view content.

NOTE: Each correct selection is worth one point.

▼ -Identity 'TR1' -Pattern '^+?(\d{3})\$' -Translation '\$1'	
New-CsOnlinePSTNGateway New-CsOnlinePstnUsage New-CsTeamsTranslationRule New-CsVoiceNormalizationRule	
▼ -Identity SBC1@contoso.com	▼ 'TR1'
Set-CsOnlineAudioConferencingRoutingPolicy Set-CsOnlinePSTNGateway Set-CsOnlinePstnUsage Set-CsOnlineVoiceUser	-InboundPSTNNumberTranslationRules -OnlinePstnUsages -OutboundPstnNumberTranslationRules -OutboundTeamsNumberTranslationRules -Usage

- A. Mastered
- B. Not Mastered

Answer: A

Explanation:

Graphical user interface, text, application, email Description automatically generated

Reference:

<https://docs.microsoft.com/en-us/powershell/module/skype/new-csteamstranslationrule?view=skype-ps> <https://docs.microsoft.com/en-us/microsoftteams/direct-routing-translate-numbers>

NEW QUESTION 51

- (Exam Topic 3)

You create a network region Region1 in Microsoft Teams.

You are adding a network site to Region1. The site has a 1.5-Mb connection. You need to ensure that all users at the site have a good voice experience. What should you do?

- A. Create and assign a Teams Network Roaming Policy that has IP video disabled.
- B. Assign the Region1 users a meeting policy that has a media bit rate of 1,500 Kbps.
- C. Run the Microsoft 365 network connectivity test tool.
- D. Tag all traffic with a DSCP value of 46.

Answer: B

Explanation:

Reference:

<https://docs.microsoft.com/en-gb/powershell/module/skype/new-csteamsnetworkroamingpolicy?view=skype-ps>

NEW QUESTION 54

- (Exam Topic 3)

You are deploying Teams Rooms to a Windows device.

You need to prevent meeting attendees from using room remote in the Teams mobile app. What should you configure in the Microsoft Teams admin center?

- A. Supported meeting mode
- B. Coordinated Meetings
- C. Front row experience
- D. Bluetooth beaconing

Answer: D

Explanation:

Manage a Microsoft Teams Rooms console settings remotely with an XML configuration file

This article discusses remote management of the default settings used by a Microsoft Teams Rooms device. It discusses how to create a master settings file and links to discussions of how to place them as needed on Teams Rooms.

It is possible for you to change default settings of Teams Rooms by updating a master XML file and sending copies to the remote Teams Rooms devices.

Create an XML configuration file

Any text editor can be used to create a settings file. The XML Elements table explains the elements shown in this sample SkypeSettings.xml (required file name) configuration file.

```
<SkypeSettings>
```

```
<AutoScreenShare>1</AutoScreenShare>
```

```
<HideMeetingName>1</HideMeetingName>
```

```
<AutoExitMeetingEnabled>true</AutoExitMeetingEnabled>
```

```
<AudioRenderDefaultDeviceVolume>70</AudioRenderDefaultDeviceVolume>
```

* Details omitted*

```
<AllowRoomRemoteEnabled>true</AllowRoomRemoteEnabled>
```

 Incorrect:

Not B: If you have one or more Microsoft Teams Rooms on Windows devices or Surface Hubs in a meeting room, you can set up Coordinated Meetings.

Coordinated Meetings lets you set up your Teams Rooms on Windows devices and Surface Hubs so that when you join a meeting on one device, the other devices in the room are also joined to the same meeting. You can configure your cameras, speakers, and microphones so that the ones that give participants the best experience are enabled while others are disabled. This avoids the dreaded echo and feedback noise participants can experience when adding multiple devices to a meeting.

Not C: Front Row layout in Teams Rooms— Additional functionality with the Front Row experience, a layout for hybrid meetings that enables users to see remote attendees at eye level and on dual screens. Users can see Chat in the right panel and participants with raised hands on the left panel. And, Meeting Chat is added in the Gallery, Large Gallery, and Together Mode layouts.

Reference:

<https://learn.microsoft.com/en-us/microsoftteams/rooms/xml-config-file> <https://learn.microsoft.com/en-us/microsoftteams/rooms/coordinated-meetings>

NEW QUESTION 55

- (Exam Topic 3)

You have a Microsoft Teams Phone deployment.

_ You need to create two call queues named CQ1 and CQ2. The solution must meet the following requirements: CQ1 must balance incoming calls so that each call agent receives the same number of calls

_ Calls received by CQ2 must ring all call agents simultaneously

What should you configure for each requirement? To answer, drag the appropriate routing methods to the correct requirements. Each routing method may be used once, more than once, or not at all. You may need to drag the split bar between panes or scroll to view content.

NOTE: Each correct selection is worth one point.

Routing methods

Attendant routing

Longest idle

Round robin

Serial routing

Answer Area

CQ1 must balance incoming calls so that each call agent receives the same number of calls:

Calls received in CQ2 must ring all call agents simultaneously:

- A. Mastered
 B. Not Mastered

Answer: A

Explanation:

Box 1: Round robin

CQ1 must balance incoming calls so that each call agent receives the same number of calls

Round robin balances the routing of incoming calls so that each call agent gets the same number of calls from the queue. This routing method may be desirable in an inbound sales environment to assure equal opportunity among all the call agents.

Box 2: Attendant routing

Calls received by CQ2 must ring all call agents simultaneously Attendant routing rings all agents in the queue at the same time. Reference:

<https://learn.microsoft.com/en-us/microsoftteams/create-a-phone-system-call-queue>

NEW QUESTION 60

- (Exam Topic 3)

You have a Microsoft Teams deployment.

You plan to use a SkypeSettings.xml file to deploy Teams Rooms.

Which two actions can you perform in the file? Each correct answer presents a complete solution. NOTE: Each correct selection is worth one point.

- A. Define the account sign-in credentials.
 B. Allow remote control from personal devices.
 C. Automatically accept proximity-based meeting invitations.
 D. Enable the default video camera.

Answer: BC

Explanation:

Manage console settings with an XML configuration file

At startup, if a Microsoft Teams Rooms console finds an XML file named SkypeSettings.xml located at

C:\Users\Skype\AppData\Local\Packages\Microsoft.SkypeRoomSystem_8wekyb3d8bbwe\LocalState, it applies the configuration settings indicated by the XML file then deletes the XML file.

XML elements include:

* <AllowRoomRemoteEnabled> Boolean

If true, room remote connections are allowed. Enabled by default.

* <AutoAcceptProximateMeetingInvitations> Boolean

If true, proximity based meetings are automatically accepted. Disabled by default.

Reference:

<https://learn.microsoft.com/en-us/microsoftteams/rooms/xml-config-file>

NEW QUESTION 61

- (Exam Topic 3)

You have a Microsoft Teams conference room named ConferenceRoom01.

You need to ensure that ConferenceRoom01 can be invited directly to third party online meetings by partner organizations.

How should you complete the PowerShell command? To answer, select the appropriate options in the answer area.

NOTE: Each correct selection is worth one point.

Answer Area

Enable-CsMeetingRoom

Set-CalendarProcessing

Set-CsMeetingConfiguration

Set-CsTeamsRoomVideoTeleConferencingPolicy

-Identity "ConferenceRoom01"

-AutomateProcessing AutoAccept

-PlaceExternalCalls Enabled

-ProcessExternalMeetingMessages \$true

-ReceiveExternalCalls Enabled

- A. Mastered
 B. Not Mastered

Answer: A

Explanation:

Box 1: Set-CalendarProcessing

Allow calendar invite processing for third-party meetings

The first thing you need to do to enable a one-touch join experience from Team Rooms is set the calendar processing rules for the device's Exchange Online room mailbox. The room mailbox needs to allow external meetings and keep the message body and subject so it can see the URL needed to join the third-party meeting. To set these room mailbox options using the Set-CalendarProcessing cmdlet, do the following:

* 1. Connect to Exchange Online PowerShell.

* 2. Get the User Principal Name (UPN) of the room mailbox if you don't know it by running the following command:

Get-Mailbox | Where {\$_.RoomMailboxAccountEnabled -eq \$True} | Format-Table Name, UserPrincipalName

* 3. Find the name of the room mailbox associated with your Teams Rooms device and make note of its UPN.

* 4. After you find the room mailbox's UPN, run the following command. Replace <UserPrincipalName> with the room mailbox's UPN:

Set-CalendarProcessing <UserPrincipalName> -ProcessExternalMeetingMessages \$True -DeleteComments \$

Box 2: -ProcessExternalMeetingMessages

Reference:

<https://learn.microsoft.com/en-us/microsoftteams/rooms/third-party-join#step-3a-enable-third-party-meetings-on>

NEW QUESTION 66

- (Exam Topic 3)

Note: This question is part of a series of questions that present the same scenario. Each question in the series contains a unique solution that might meet the stated goals. Some question sets might have more than one correct solution, while others might not have a correct solution.

After you answer a question in this section, you will NOT be able to return to it. As a result, these questions will not appear in the review screen.

Your company uses Microsoft Teams Calling Plans.

The company acquires a small development team. Currently, users on the team have their own direct inward dial (DID) numbers that have PSTN capabilities.

You migrate the users to Teams.

You need to ensure that the users have phone numbers. Solution: You run the New-CsHybridTelephoneNumber cmdlet. Does this meet the goal?

A. Yes

B. No

Answer: B

NEW QUESTION 69

- (Exam Topic 3)

Note: This question is part of a series of questions that present the same scenario. Each question in the series contains a unique solution that might meet the stated goals. Some question sets might have more than one correct solution, while others might not have a correct solution.

After you answer a question in this section, you will NOT be able to return to it. As a result, these questions will not appear in the review screen.

You need to create a new call queue to route calls to support agents. The support agents must be able to see their call queue history and the shared transcribed voicemail. The solution must minimize administrative effort.

Solution: You redirect calls for the call queue to a shared voicemail box. Does this meet the goal?

A. Yes

B. No

Answer: B

Explanation:

Reference:

<https://www.orbid365.be/shared-voicemail-arrives-in-teams/>

NEW QUESTION 70

- (Exam Topic 3)

You have a Microsoft Lync Server 2013 deployment. Some users use Enterprise Voice.

You plan to migrate to Microsoft Teams.

You need to design a migration solution. The solution must minimize the impact on end users during the migration.

What should you include in the solution?

A. Migrate all users directly from Lync Server 2013 to Teams.

B. Migrate the Enterprise Voice users from Lync Server 2013 to Microsoft Skype for Business Server 2019. and then migrate the Enterprise Voice users to Teams.

C. Migrate all other users directly from Lync Server 2013 to Teams.

D. Perform an in-place upgrade from Lync Server 2013 to Microsoft Skype for Business Server 2015, and then migrate all users to Teams.

Answer: D

NEW QUESTION 73

- (Exam Topic 3)

You have a Microsoft Teams Phone deployment.

You need to provide two users with the ability to share a single phone number for inbound and outbound calling.

What are two ways to achieve the goal? Each correct answer presents a complete solution. NOTE: Each correct selection is worth one point.

A. call queues

B. call forwarding

C. group call pickup

D. call delegation

E. call park

Answer: AC

Explanation:

Reference:

<https://docs.microsoft.com/en-us/microsoftteams/create-a-phone-system-call-queue>

<https://docs.microsoft.com/en-us/microsoftteams/call-sharing-and-group-call-pickup>

NEW QUESTION 76

- (Exam Topic 3)

You have a Microsoft Teams Phone deployment.

You need to configure users to include a toll free phone number as part of their meeting invites. Which type of policy should you configure?

- A. voice routing
- B. audio conferencing
- C. customization
- D. meeting

Answer: B

Explanation:

Initial assignment of phone numbers that are included in the meeting invites for users

The phone numbers included in the meeting invites of users enabled for Audio Conferencing are defined in the TeamsAudioConferencingPolicy that's assigned to users. When a TeamsAudioConferencingPolicy is assigned to a user, all toll and toll-free phone numbers added in the policy are included in meeting invites for users who have that policy. If a user is assigned a TeamsAudioConferencingPolicy and there aren't any toll or toll-free phone numbers added to the policy, then in that case the phone numbers that appear in the meeting invites of these users are defined by the default conferencing toll phone number and the default conferencing toll-free phone number in each individual user's settings.

Reference:

<https://learn.microsoft.com/en-us/microsoftteams/set-the-phone-numbers-included-on-invites-in-teams>

NEW QUESTION 78

- (Exam Topic 3)

You have a Microsoft Teams Phone deployment that contains two users named User1 and User2. User1 will be on leave for two weeks.

You need to redirect all calls to the phone number of User1 to the phone number of User2. The solution must minimize administrative effort.

What should you modify for User1?

- A. the voicemail transfer target settings
- B. the call delay and order settings
- C. the call delegation settings
- D. the phone number type

Answer: C

Explanation:

Use the Teams admin center

You can use the Teams admin center to configure call forward and unanswered settings, group call pickup, and call delegation for your users.

To configure immediate call forward settings:

- In the Teams admin center, go to Users > Manage users and select a user.
- On the user details page, go to the Voice tab.
- Under Call answering rules, select Be immediately forwarded, and select the appropriate call forward type and destination.

To configure simultaneous ringing, on the same page select Ring the user's devices. In the Also allow drop-down, select the appropriate simultaneous ringing setting.

To configure unanswered settings, on the same page select the appropriate setting in the If unanswered drop-down. In the Ring for this many seconds before redirecting drop-down, specify the number of seconds to wait.

The configuration of call delegation and group call pickup are integrated into the call forward and unanswered settings by selecting the appropriate type. For example, to configure that calls should also ring the user's delegates, on the same page select Call delegation under Also allow. Then add the appropriate delegates by selecting Add people and clicking Save.

Reference:

<https://learn.microsoft.com/en-us/microsoftteams/user-call-settings>

NEW QUESTION 83

- (Exam Topic 3)

Your company plans hosts a Microsoft Teams live event for a specific group of people.

As part of the initial setup, you need to assign roles to event group members. The members must perform the following tasks:

Invite attendees Moderate Q&A

Start and stop the live event

What is the least privileged role that can perform each task? To answer drag the appropriate roles to the correct tasks. Each role may be used once, more than once, or not at all. You may need to drag the split bar between panes or scroll to view content.

NOTE: Each correct selection is worth one point.

Roles	Answer Area
Attendee	Invite attendees:
Organizer	Moderate Q&A:
Presenter	Start and stop the live event:
Producer	

- A. Mastered
 B. Not Mastered

Answer: A

Explanation:

Box 1: Organizer Invite attendees

Live Event Roles and Responsibilities

Event organizers can invite others to the event and grant them one of two roles: Producer or Presenter. Both roles have different access and responsibilities for the Live Event. You can have multiple producers and presenters (up to 250, though only the last 10 who have spoken will appear in the producer view list).

Box 2: Presenter Moderate Q&A Presenter Capabilities

Please see Microsoft's documentation for additional details on presenter capabilities.

Share video, your screen, or other content that the producer can then send to the Live Event

Sharing of computer audio in a Live Event is current only support on the Windows client of MS Teams. Mute other presenters

Chat with other producers and presenters Moderate Q&A

Manage the event recording and reports Box 3: Producer

Start and stop the live event Producers

Producers have access and control over nearly all settings and details for an event. However, especially in larger Live Events, a producer tends to have the more supportive role of managing which video feeds, shared screens, or other content is presented in the event.

Consider limiting the number of producers for your event. Not only is the producer interface more complex than the presenter's, but having more producers than needed can make coordination more difficult.

Producer Capabilities

Please see Microsoft's documentation for additional details on producer capabilities.

Select video feeds or other content shared by presenters or producers and send them to the event Mute presenters or producers individually or collectively

Chat with other producers and presenters Start and end the Live Event

Moderate Q&A

Manage the event recording and reports Reference:

<https://www.uvm.edu/it/kb/article/teams-live-events/>

NEW QUESTION 88

- (Exam Topic 3)

You have a Teams Phone deployment. The deployment has a single Session 3crder Controller (SBC) that uses Direct Routing.

Users report that outbound PSTN calls fail.

You need to identify the quantity of specific SBC SIP errors. What should you review m the Microsoft Teams admin center?

- A. Endpoint Reports in Microsoft Call Quality Dashboard
 B. the network effectiveness ratio on the usage tab for the SBC
 C. the Jitter tab in Network parameters
 D. Quality of Experience Reports in Microsoft Call Quality Dashboard

Answer: A

NEW QUESTION 90

- (Exam Topic 3)

You have a Microsoft Teams deployment.

You have two teams that have meeting requirements as shown in the following table.

Name	Requirement
Human Resources	<ul style="list-style-type: none"> 5,000 attendees must be supported. All attendees must be able to ask questions. Streaming by using a Stream Encoder must be supported.
Sales	<ul style="list-style-type: none"> 100 attendees must be supported. The meeting must allow attendee registration. Attendee registrations must be approved by meeting organizers.

You need to recommend which type of meeting to use for each team.

What should you recommend for each team? To answer, drag the meeting types to the correct teams Each meeting type may be used once, more than once, or not at all. You may need to drag the split bar between panes or scroll to view content.

NOTE: Each correct selection is worth one point.

Meeting types	Answer Area
<div>0</div> <div>Live event</div>	Human Resources: <div>0</div>
<div>0</div> <div>Teams meeting</div>	Sales: <div>0</div>
<div>0</div> <div>Virtual appointment</div>	
<div>0</div> <div>Webinar</div>	

- A. Mastered
 B. Not Mastered

Answer: A

Explanation:

Box 1: Live event Live events

Live events are structured meetings that enable your organization to schedule and produce events that stream to large online audiences—up to 20,000 people. With live events, the audience interaction is a managed Q&A experience.

Note: Meetings, webinars, and live events are all types of meetings, but webinars and live events provide additional control for the organizer over the conversation and participants. Webinars provide two-way interaction while live events provide a managed Q&A experience.

The different types of meetings also have different participant limits and participant capabilities.

* Live events

Number of participants: Up to 20,000

- Broadcast to large audiences.
- Moderated Q&A for audience interaction.
- Can specify producers and presenters, including external presenters.
- Supports more advanced production capabilities. Registration supported: no

Box 2: Webinar Webinars

Webinars are structured meetings where presenters and participants have clear roles. A key difference between webinars and Teams meetings is that webinars support robust registration management, customizable event and registration site, and event-oriented default meeting options.

Note: Meetings, webinars, and live events are all types of meetings, but webinars and live events provide additional control for the organizer over the conversation and participants. Webinars provide two-way interaction while live events provide a managed Q&A experience.

The different types of meetings also have different participant limits and participant capabilities.

* Webinars

Number of participants: Up to 1,000

- Participants up to 1,000 have fully interactive capabilities.
- Audience interaction configurable.
- Can specify presenters Registration supported: yes Incorrect:

* Meetings

Number of participants: Up to 20,000

- Participants up to 1,000 have fully interactive equal meeting capabilities.
- Participants over 1,000 up to 20,000 have View-only capabilities. Registration supported: yes

Reference:

<https://learn.microsoft.com/en-us/microsoftteams/quick-start-meetings-live-events>

NEW QUESTION 94

- (Exam Topic 3)

You have a Microsoft Teams Phone deployment.

You need to ensure that a user named user1@contoso.com can call international phone numbers by using Direct Routing.

Which type of policy should you use?

- A. a caller ID policy
 B. a calling policy
 C. a teams policy
 D. a voice routing policy

Answer: D

NEW QUESTION 99

- (Exam Topic 3)

Note: This question is part of a series of questions that present the same scenario. Each question in the series contains a unique solution that might meet the stated goals. Some question sets might have more than one correct solution, while others might not have a correct solution.

After you answer a question in this section, you will NOT be able to return to it. As a result, these questions will not appear in the review screen.

You need to create a new call queue to route calls to support agents. The support agents must be able to see their call queue history and the shared transcribed voicemail. The solution must minimize administrative effort.

Solution: You configure group call pickup for the call queue. Does this meet the goal?

- A. Yes
 B. No

Answer: B

Explanation:

Reference:

<https://regroove.ca/stellark/2021/09/15/redirect-teams-auto-attendant-voicemail-to-a-channel-updated-method/>

NEW QUESTION 101

- (Exam Topic 3)

Your company assigns an Office 365 E3 license to each user. All users are in France. You plan to deploy Direct Routing. Which additional license should you assign to the users?

- A. Microsoft 365 Audio Conferencing
- B. Microsoft 365 Phone System - Virtual
- C. Microsoft 365 Phone System
- D. Microsoft 365 Domestic and International Calling Plan
- E. Microsoft 365 Domestic Calling

Answer: C

Explanation:

Reference:

<https://docs.microsoft.com/en-us/microsoftteams/direct-routing-plan>

NEW QUESTION 104

- (Exam Topic 3)

Your company is migrating from a legacy PBX system to Microsoft Teams.

The phone number range is +1-423-555-1xxx. The PBX system uses four-digit dialing internally. Extensions are the last four digits of the number.

You need to ensure that you can use four-digit dialing for your numbers in Teams. The solution must minimize administrative effort. How should you configure the normalization rule? To answer, select the appropriate options in the answer area. NOTE: Each correct selection is worth one point.

Answer Area

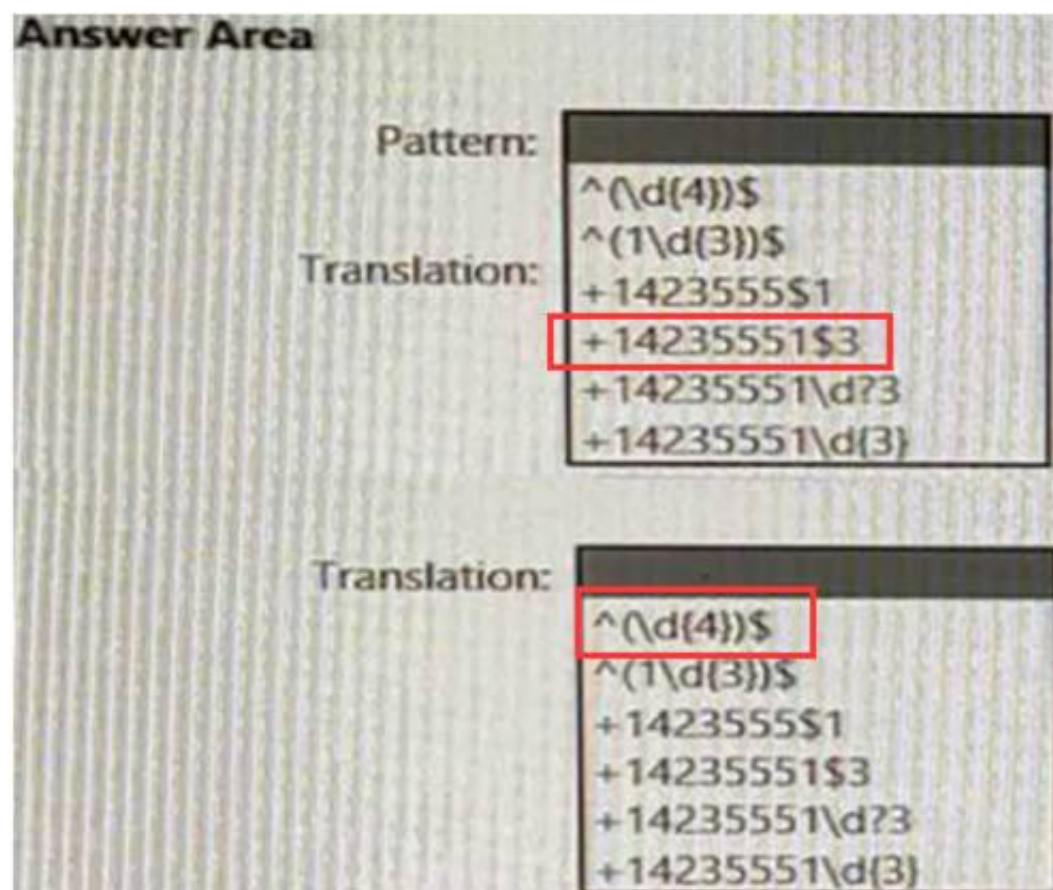
Pattern:	Translation:
<input type="checkbox"/>	<input type="checkbox"/> ^(\d{4})\$
<input type="checkbox"/>	<input type="checkbox"/> ^(1\d{3})\$
<input type="checkbox"/>	<input type="checkbox"/> +1423555\$1
<input type="checkbox"/>	<input type="checkbox"/> +14235551\$3
<input type="checkbox"/>	<input type="checkbox"/> +14235551\d?3
<input type="checkbox"/>	<input type="checkbox"/> +14235551\d{3}

Translation:
<input type="checkbox"/> ^(\d{4})\$
<input type="checkbox"/> ^(1\d{3})\$
<input type="checkbox"/> +1423555\$1
<input type="checkbox"/> +14235551\$3
<input type="checkbox"/> +14235551\d?3
<input type="checkbox"/> +14235551\d{3}

- A. Mastered
- B. Not Mastered

Answer: A

Explanation:



NEW QUESTION 107

- (Exam Topic 3)

You need to change the meeting entry notifications to play a tone instead of each attendee's recorded name. What should you configure in the Microsoft Teams admin center?

- A. the Caller ID policies node under Voice
- B. the Meeting settings node under Meetings
- C. the Conference bridges node under Meetings
- D. the Resource accounts node under Org-wide settings
- E. the Meeting policies node under Meetings

Answer: C

Explanation:

Reference:

<https://docs.microsoft.com/en-us/microsoftteams/turn-on-or-off-entry-and-exit-announcements-for-meetings-in>

NEW QUESTION 111

- (Exam Topic 3)

Your company has offices in Seattle.

You deploy Microsoft Teams Phone. You have three Session Border Controller (SBCs) named SBC1, SBC2, and SBC3.

You need to configure voice routing to meet the following requirements:

- > All calls to area codes 425 and 206 must attempt to go to SBC1, and if SBC1 is unavailable, fail over to SBC2.
- > All other calls to the United States and Canada must go out through SBC2.
- > International calls must go out through SBC2 or SBC3.

How should you complete the PowerShell script? To answer, drag the appropriate values to the correct targets. Each value may be used once, more than once, or not at all. You may need to drag the split bar between panes or scroll to view content.

NOTE: Each correct selection is worth one point.

Values	Answer Area
'sbc1.contoso.com'	New-CsOnlineVoiceRoute -Identity 'Redmond' -NumberPattern '^+1(425 206)(\d{7})\$'
'sbc2.contoso.com'	-OnlinePstnGatewayList
'sbc3.contoso.com'	New-CsOnlineVoiceRoute -Identity 'US and Canada' -NumberPattern '^+1(\d{10})\$'
'sbc1.contoso.com', 'sbc2.contoso.com'	-OnlinePstnGatewayList
'sbc2.contoso.com', 'sbc3.contoso.com'	New-CsOnlineVoiceRoute -Identity 'All other calls' -NumberPattern '^+(?!1)\d{10}\$'
'sbc1.contoso.com', 'sbc3.contoso.com'	-OnlinePstnGatewayList

- A. Mastered
- B. Not Mastered

Answer: A

Explanation:

Graphical user interface, text, application, email Description automatically generated

Reference:

<https://docs.microsoft.com/en-us/powershell/module/skype/new-csonlinevoiceroute?view=skype-ps>

NEW QUESTION 112

.....

THANKS FOR TRYING THE DEMO OF OUR PRODUCT

Visit Our Site to Purchase the Full Set of Actual MS-721 Exam Questions With Answers.

We Also Provide Practice Exam Software That Simulates Real Exam Environment And Has Many Self-Assessment Features. Order the MS-721 Product From:

<https://www.2passeasy.com/dumps/MS-721/>

Money Back Guarantee

MS-721 Practice Exam Features:

- * MS-721 Questions and Answers Updated Frequently
- * MS-721 Practice Questions Verified by Expert Senior Certified Staff
- * MS-721 Most Realistic Questions that Guarantee you a Pass on Your FirstTry
- * MS-721 Practice Test Questions in Multiple Choice Formats and Updatesfor 1 Year