

Cisco

Exam Questions 350-501

Implementing and Operating Cisco Service Provider Network Core Technologies



NEW QUESTION 1

Refer to the exhibit:



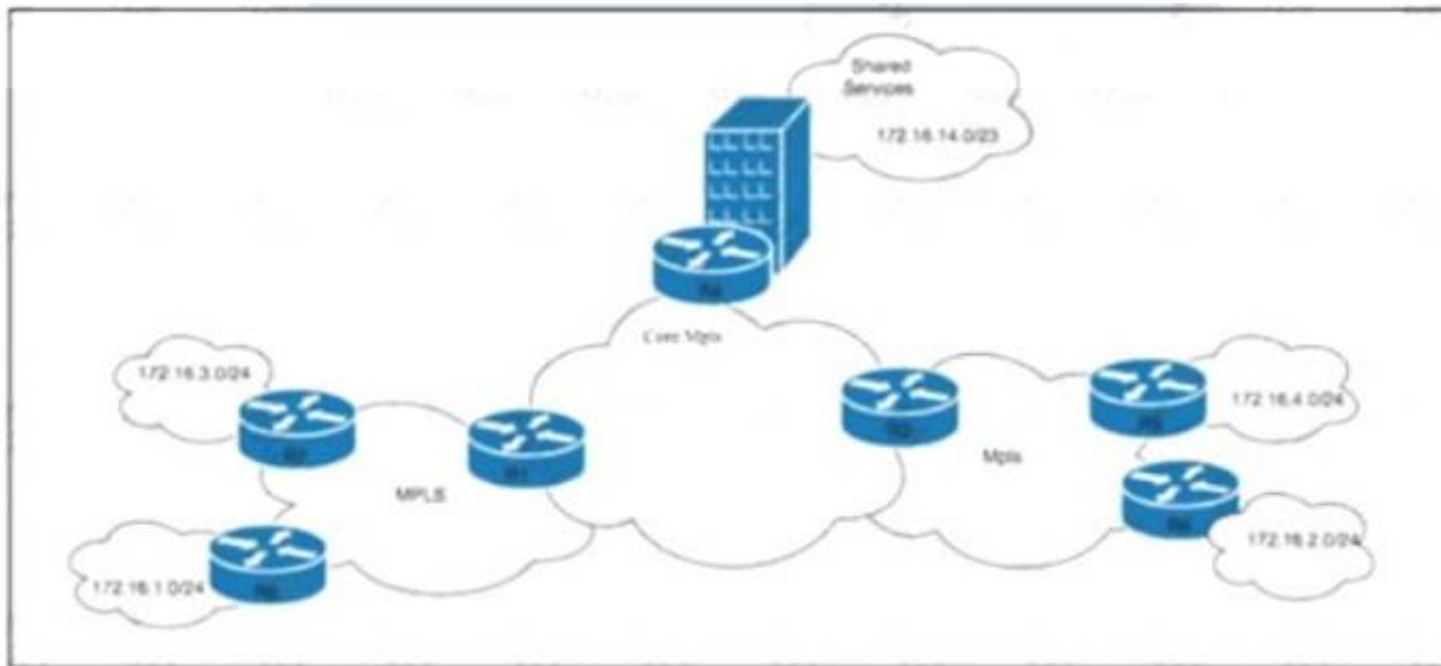
P3 and PE4 are at the edge of the service provider core and serve as ABR routers. Aggregation areas are on either side of the core. Which statement about the architecture is true?

- A. If each area is running its own IGP
- B. the ABR routers must redistribute the IGP routing table into BGP
- C. To support seamless MPL
- D. TDP must be used as the label protocol
- E. If each area is running its own IGP
- F. BGP must provide an end-to-end MPLS LSP
- G. To support seamless MPLS, the BGP route reflector feature must be disabled

Answer: C

NEW QUESTION 2

Refer to the exhibit.



The ISP is implementing a new hosting-as-a-service solution for its business customers. Service accessibility must be unique and separate for each customer. The network architect must ensure that multiple paths toward the hosting-as-a-service solution are always available. Basic protection against traffic black-holing on the MPLS network is required in case of link failure. Which two actions must the engineering team perform to meet the requirements? (Choose two.)

- A. Create the hosting-as-a-service VRF on router R4 and configure it with the route target both 65123:88 command.
- B. Configure the fast-reroute per-prefix command for the IS-IS protocol in the MPLS network and enable the BGP route-reflector feature on R2.
- C. Enable the VRF-Lite feature on router R4 and enable BGP address-family VPNv4.
- D. Configure the mpls ldp sync command in the MPLS network with the BGP additional-paths receive and additional-paths send options.
- E. Configure the fast-hello command under the IS-IS routing protocol with the BGP multipath 2 option enabled.

Answer: BD

NEW QUESTION 3

Refer to the exhibit.

`snmp-server community ciscotest ro 2`

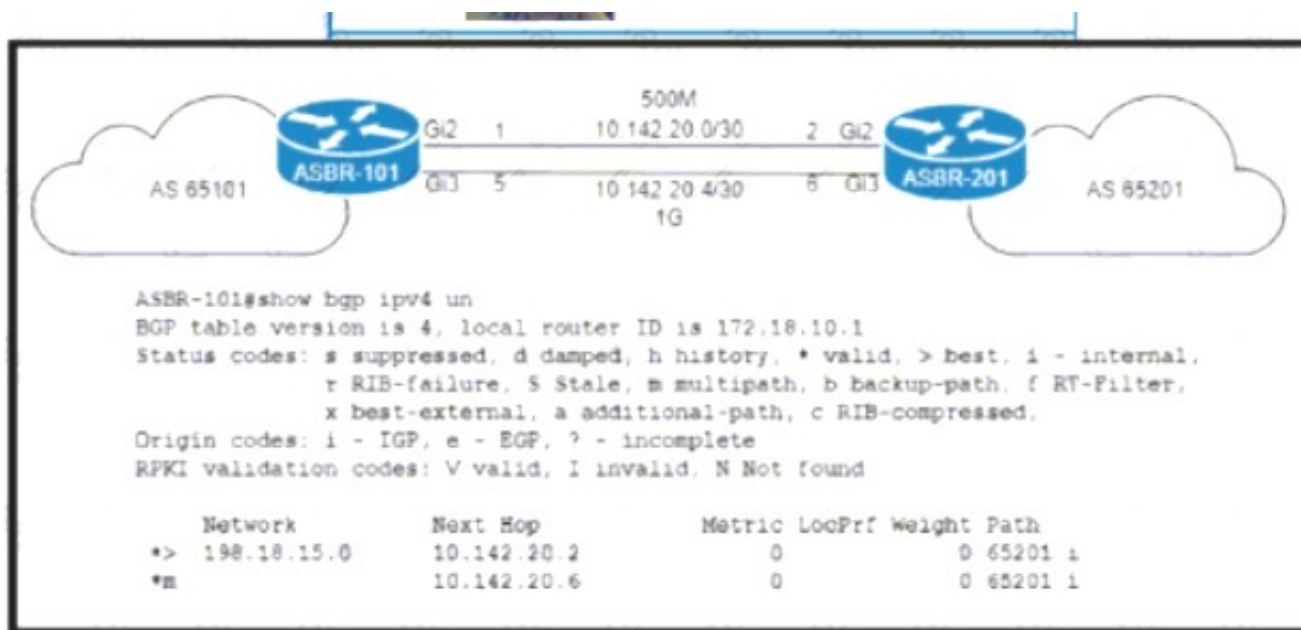
What does the number 2 mean in the configuration?

- A. It dictates the number of sessions that will be open with the SNMP manager
- B. It represents the version of SNMP running.
- C. It indicates two SNMP managers are able to read and write with the agent using community string ciscotest.
- D. It is the numeric name of the ACL that contains the list of SNMP managers with access to the agent.

Answer: D

NEW QUESTION 4

Refer to the exhibit



an engineer working for a private telecommunication company with an employee Id: 4065:96:080 upgrades the WAN link between routers ASBR-101 and ASBR-201 to 1Gb by Installing a new physical connection between the Gi3 Interfaces. Which BGP attribute must the engineer configure on ASBR-201 so that the existing WAN link on Gi2 Is maintained as a backup?

- ☐ configure terminal


```

ip prefix-list ALLOWED_PREFIXES seq 5 permit 198.18.15.0/24

route-map AS65101-OUT permit 10
match ip address prefix-list ALLOWED_PREFIXES
set as-path prepend 65101 65101

router bgp 65201
address-family ipv4
neighbor 10.142.20.1 route-map AS65101-OUT out
end
      
```
- ☐ configure terminal


```

ip prefix-list ALLOWED_PREFIXES seq 5 permit 198.18.15.0/24

route-map AS65101-OUT permit 10
match ip address prefix-list ALLOWED_PREFIXES
set as-path prepend 65101 65101
      
```
- ☒ configure terminal


```

ip prefix-list ALLOWED_PREFIXES seq 5 permit 198.18.15.0/24

route-map AS65101-OUT permit 10
match ip address prefix-list ALLOWED_PREFIXES
set metric 100

router bgp 65201
address-family ipv4
neighbor 10.142.20.1 route-map AS65101-OUT out
end
      
```
- ☐ configure terminal


```

ip prefix-list ALLOWED_PREFIXES seq 5 permit 198.18.15.0/24

route-map AS65101-OUT permit 10
match ip address prefix-list ALLOWED_PREFIXES
set metric 100

router bgp 65201
address-family ipv4
neighbor 10.142.20.5 route-map AS65101-OUT out
end
      
```

- A. Option A
- B. Option B
- C. Option C
- D. Option D

Answer: C

NEW QUESTION 5

How is a telemetry session established for data analytics?

- A. A router initiates a session using the dial-out to a destination.
- B. A destination initiate a session to a router.
- C. The destination initiate a session using the dial-out more to the router.
- D. A router requests the data using Teinet.

Answer: A

NEW QUESTION 6

Refer to the exhibit.



A network operator working for a private telecommunication company with an employee id: 7138: 13:414 just added new users to the network, which resides in VLANs connected to routers R1 and R4. The engineer now must configure the network so that routers R1 and R4 share routes to the VLANs, but routers R2 and R3 are prevented from including the routes in their routing tables. Which configuration must the engineer apply to R4 to begin implementing the request?

- A. pseudowire -class ciscotest encapsulation mplsinterface gigabitethernet 1/0/1connect neighbor 192.168.1.1 101 pw-class cisco
- B. pseudowire -class ciscotest encapsulation mplsinterface gigabitethernet 1/0/1xconnect 192.168.1.1 101 pw-class ciscotest
- C. pseudowire-class ciscotest encapsulation mplsinterface gigabitethernet 1/0/1xconnect 192.168.1.1 101 pw-class ciscotest
- D. interface serial 2/0/0 frame-relay encapsulationip address 192.168.1.4 255.255.255.0service-policy output ciscotest

Answer: B

NEW QUESTION 7

Exhibit:

```

R1#show ip bgp 35.33.13.0
BGP routing table entry for 35.33.13.0/24, version 24
Paths: (3 available, best #3, table Default-IP-Routing-Table)
...
10
 172.31.1.99 from 172.31.1.99 (1.1.1.1)
   Origin IGP, metric 100, localpref 200, valid, internal
10
 172.26.11.100 from 172.26.11.100 (3.3.3.3)
   Origin IGP, metric 120, localpref 200, valid, external
18293
 172.21.71.1 from 172.21.71.1 (2.2.2.2)
   Origin IGP, metric 150, localpref 200, valid, external, best
  
```

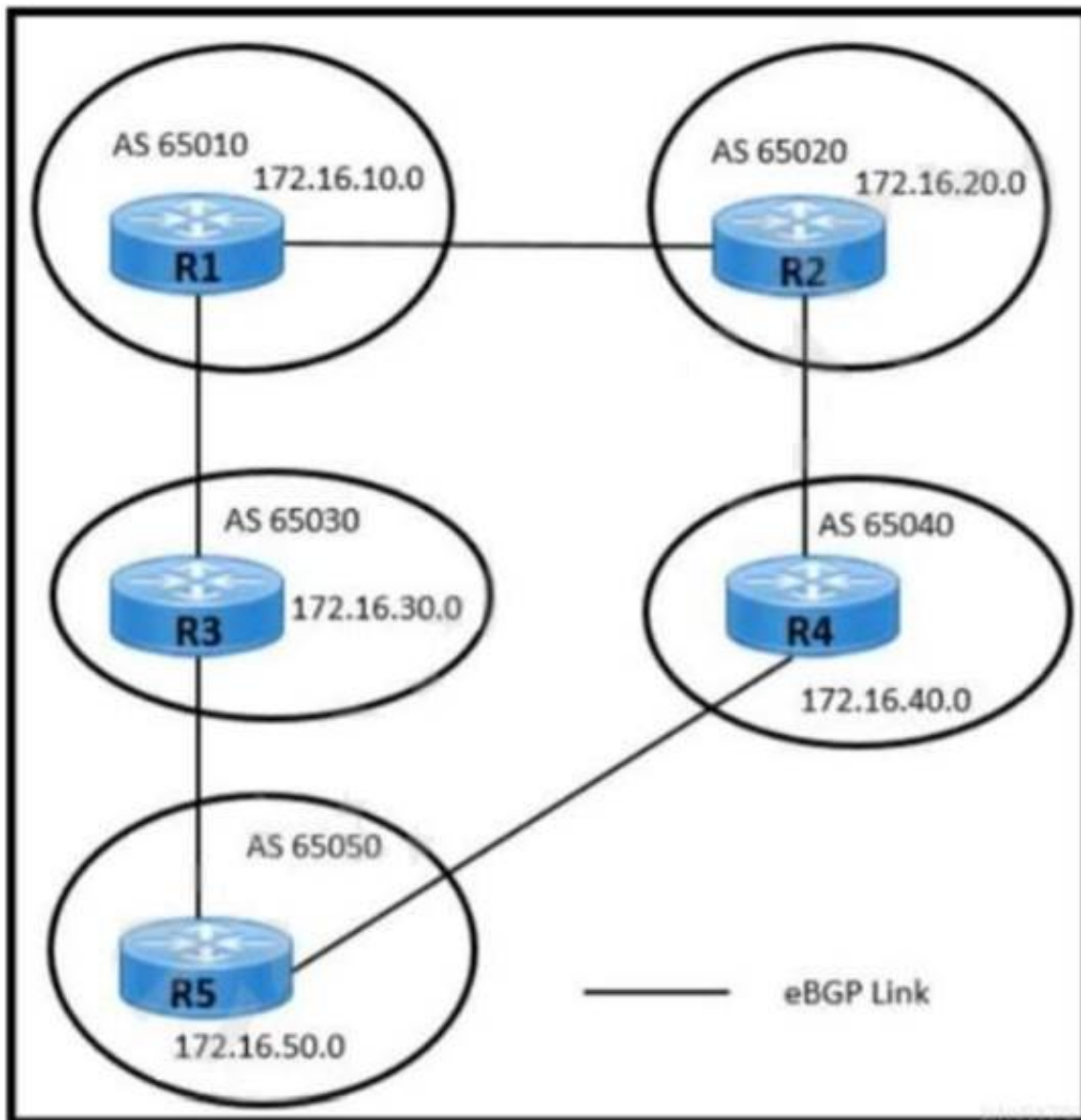
A network engineer must update the routing toward the web server with IP address 35.22.13.1. The primary path must be configured via the neighbor router with ID 1.1.1.1. However, local-preference configuration is not permitted on R1. Which task must the engineer perform on R1 to complete the implementation?

- A. Configure the device to choose the best MED from the same AS.
- B. Set the device to ignore the conditional MED if the route originated in a different autonomous system.
- C. Enable MED comparison between routes from neighbors in different AS.
- D. Implement deterministic MED to choose the best route from the different AS.

Answer: C

NEW QUESTION 8

Refer to the exhibit.



Users in AS 65010 are connected with the application server in AS 65050 with these requirements:
 AS 65010 users are experiencing latency and congestion to connect with application server 172.16.50.10. AS 65030 must be restricted to become Transient Autonomous System for traffic flow.
 Links connected to AS 65020 and AS 65040 are underutilized and must be used efficiently for traffic. Which two configurations must be implemented to meet these requirements? (Choose two.)

- A. Apply the AS-Path route-map policy for traffic received from R3.
- B. Configure the route map to prepend the AS-Path attribute for R5-R3 BGP peering.
- C. Apply the MED route-map policy for traffic received from R4.
- D. Configure a higher Local preference for R5-R4 BGP peering.
- E. Configure the route map to set the MED 50 attribute for R5-R4 BGP peering.

Answer: AC

NEW QUESTION 9

A network engineer is testing an automation platform that interacts with Cisco networking devices via NETCONF over SSH. In accordance with internal security requirements:
 NETCONF sessions are permitted only from trusted sources in the 172.16.20.0/24 subnet. CLI SSH access is permitted from any source.
 Which configuration must the engineer apply on R1?

- A. configure terminal hostname R1ip domain-name mydomain.com crypto key generate rsaip ssh version 1access-list 1 permit 172.16.20.0 0.0.0.255 netconf ssh acl 1line vty 0 4 transport input ssh end
- B. configure terminal hostname R1ip domain-name mydomain.com crypto key generate rsaip ssh version 2access-list 1 permit 172.16.20.0 0.0.0.255access-list 1 permit any netconf sshline vty 0 4access-class 1 in transport input ssh end
- C. configure terminal hostname R1ip domain-name mydomain.com crypto key generate rsaip ssh version 1access-list 1 permit 172.16.20.0 0.0.0.255 access-list 2 permit anynetconf ssh line vty 0 4access-class 2 in transport input ssh end
- D. configure terminal hostname R1ip domain-name mydomain.com crypto key generate rsaip ssh version 2access-list 1 permit 172.16.20.0 0.0.0.255 netconf ssh acl 1line vty 0 4 transport input ssh end

Answer: D

NEW QUESTION 10

Which fact must a network engineer consider when planning to deploy RSVP-TE FRR?

- A. The FRR backup tunnel reserves the total bandwidth of all protected tunnels
- B. FRR protects MPLS LDP and RSVP-TE LSPs.
- C. PLR prefers FRR NHOP backup tunnels over NNHOP tunnels.
- D. PLR prefers FRR NNHOP backup tunnels over NHOP tunnels.

Answer: D

NEW QUESTION 10

A network engineer has configured TE tunnels in the MPLS provider core. Which two steps ensure traffic traverse? (Choose two.)

- A. Static routes is the only option for directing traffic into a tunnel.
- B. ECMP between tunnels allows RSVP to function correctly.

- C. Forwarding adjacency features allows a tunnel to be Installed in the IGP table as a link.
- D. The IGP metric of a tunnel is configured to prefer a certain path
- E. A tunnel weight is configured in SPF database the same way as a native link.

Answer: CD

NEW QUESTION 13

What is the role of NSO?

- A. Provides public cloud services for customers that need Internet access.
- B. Controls the turn-up of a device.
- C. Provides network monitoring services for Layer 3 devices.
- D. Maintains data storage.

Answer: B

NEW QUESTION 15

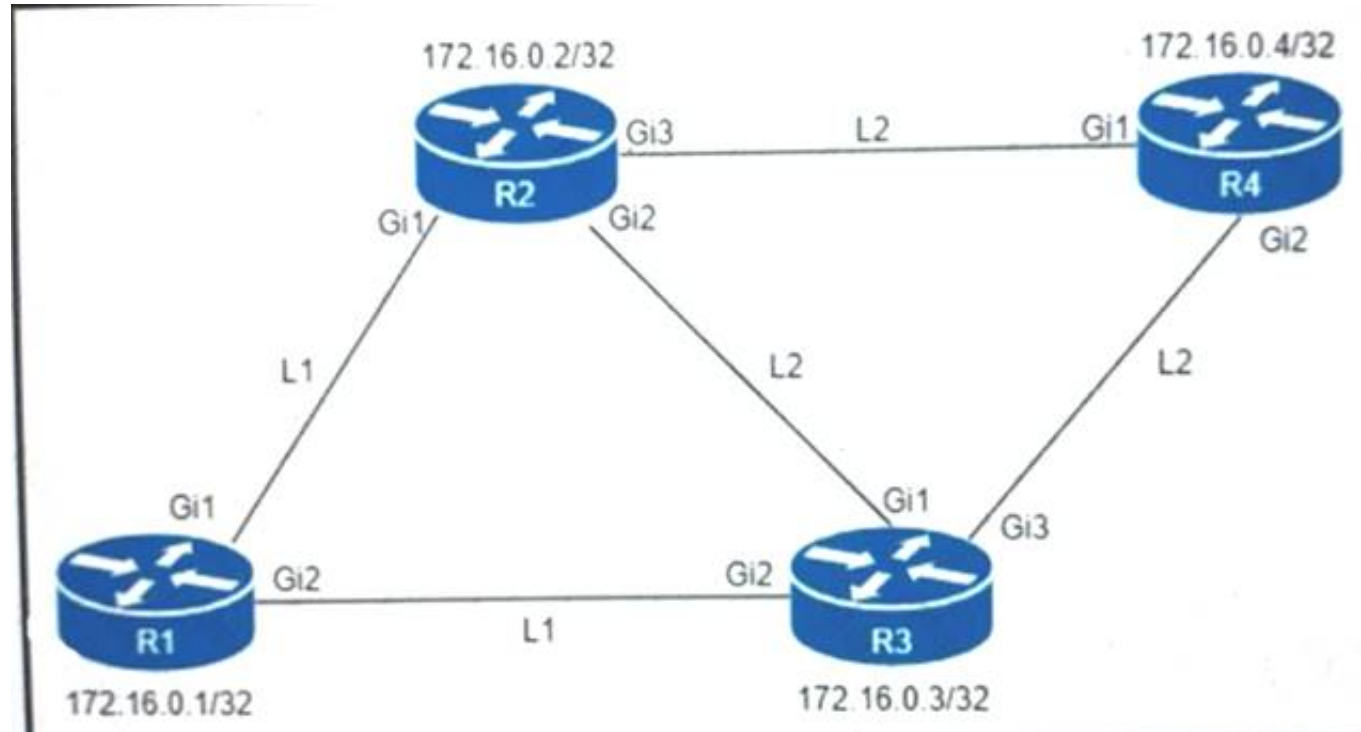
Which capability does the MPLS TE FRR facility backup protection method provide?

- A. defining the set of characteristics for the backup TE LSP
- B. leveraging label stacking to protect selected TE LSPs using a single backup TE LSP
- C. creating a bypass LSP for each protected LSP at each point of local repair
- D. assigning a backup TE LSP tunnel to the protected node at the headend of the protected TE LSP

Answer: C

NEW QUESTION 20

Refer to the exhibit.



An engineer must configure router R2 as the new P router in the network. Which configuration must be applied to R2 to enable LDP-IGP Sync on its L2 IS-IS adjacencies?

- ☐ config t
router isis 1
mpls ldp igp sync
interface GigabitEthernet1
mpls ldp igp sync delay 5
- ☐ config t
interface range GigabitEthernet 1-3
mpls ldp igp sync delay 5
- ☐ config t
router isis 1
mpls ldp sync
- ☒ config t
router isis 1
mpls ldp sync
interface GigabitEthernet1
no mpls ldp igp sync

- A. Option A
- B. Option B
- C. Option C
- D. Option D

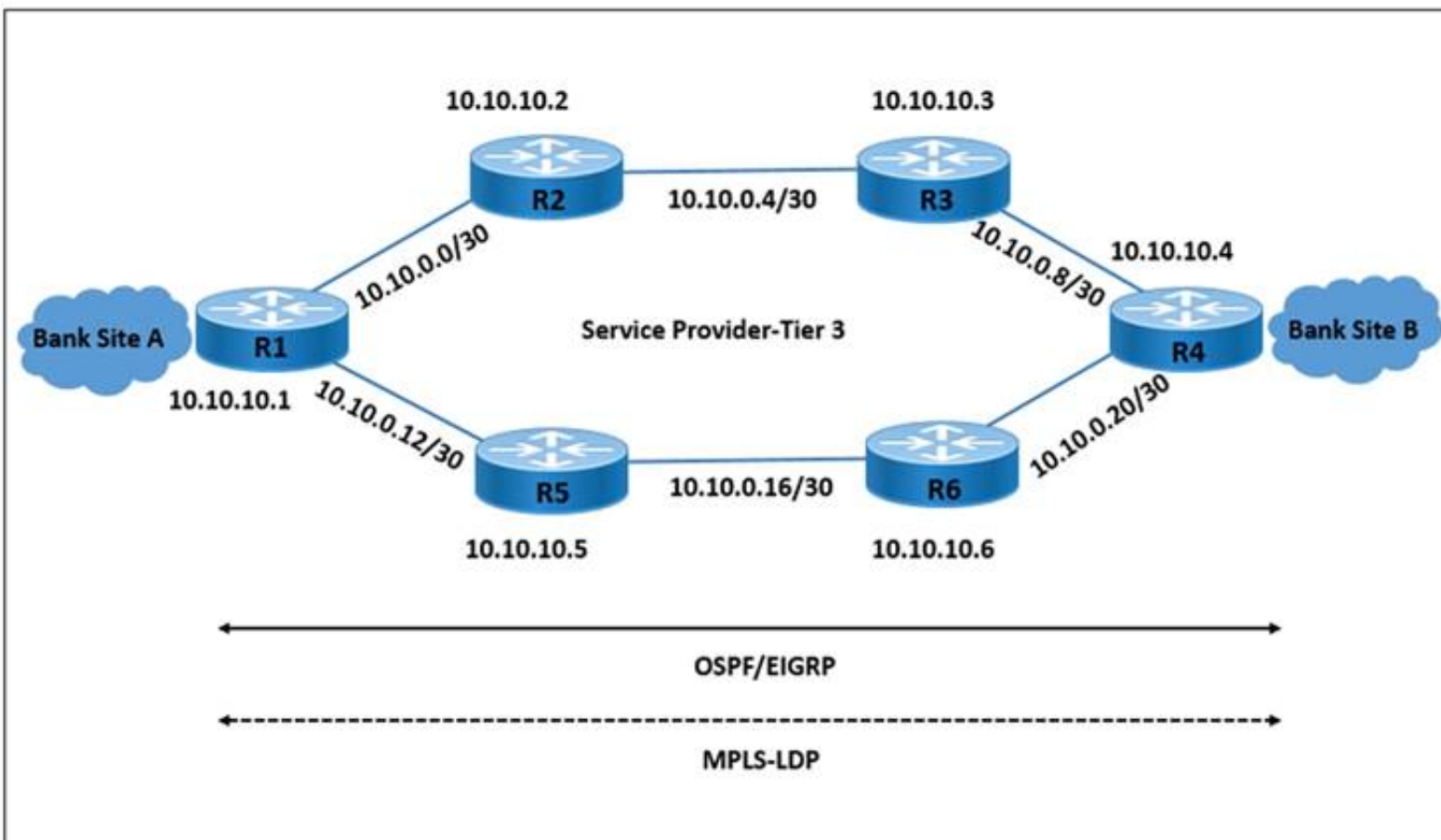
Answer: D

NEW QUESTION 21

Refer to the exhibit.

```
R2# show mpls ldp neighbor detail
Peer LDP Ident: 10.10.10.1:0; Local LDP Ident 10.10.10.2:0
TCP connection: 10.10.10.1.646 - 10.10.10.2.56531
Password: not required, none, in use
State: Oper; Msgs sent/rcvd: 18/18; Downstream; Last TIB rev sent 28
Up time: 00:01:08; UID: 3; Peer Id 2;
LDP discovery sources:
  GigabitEthernet2/0; Src IP addr: 10.0.0.1
    holdtime: 15000 ms, hello interval: 5000 ms
Addresses bound to peer LDP Ident:
  10.0.0.13 10.10.10.1 10.0.0.1
Peer holdtime: 180000 ms; KA interval: 60000 ms; Peer state: estab
Clients: Dir Adj Client
LDP Session Protection enabled, state: Incomplete
  duration: 86400 seconds

R1# show mpls ldp neighbor detail
Peer LDP Ident: 10.10.10.2:0; Local LDP Ident 10.10.10.1:0
TCP connection: 10.10.10.2.56531 - 10.10.10.1.646
Password: not required, none, in use
State: Oper; Msgs sent/rcvd: 19/19; Downstream; Last TIB rev sent 30
Up time: 00:02:27; UID: 2; Peer Id 1;
LDP discovery sources:
  GigabitEthernet2/0; Src IP addr: 10.0.0.2
    holdtime: 15000 ms, hello interval: 5000 ms
Addresses bound to peer LDP Ident:
  10.10.10.2 10.0.0.5 10.0.0.2 10.0.0.25
Peer holdtime: 180000 ms; KA interval: 60000 ms; Peer state: estab
```



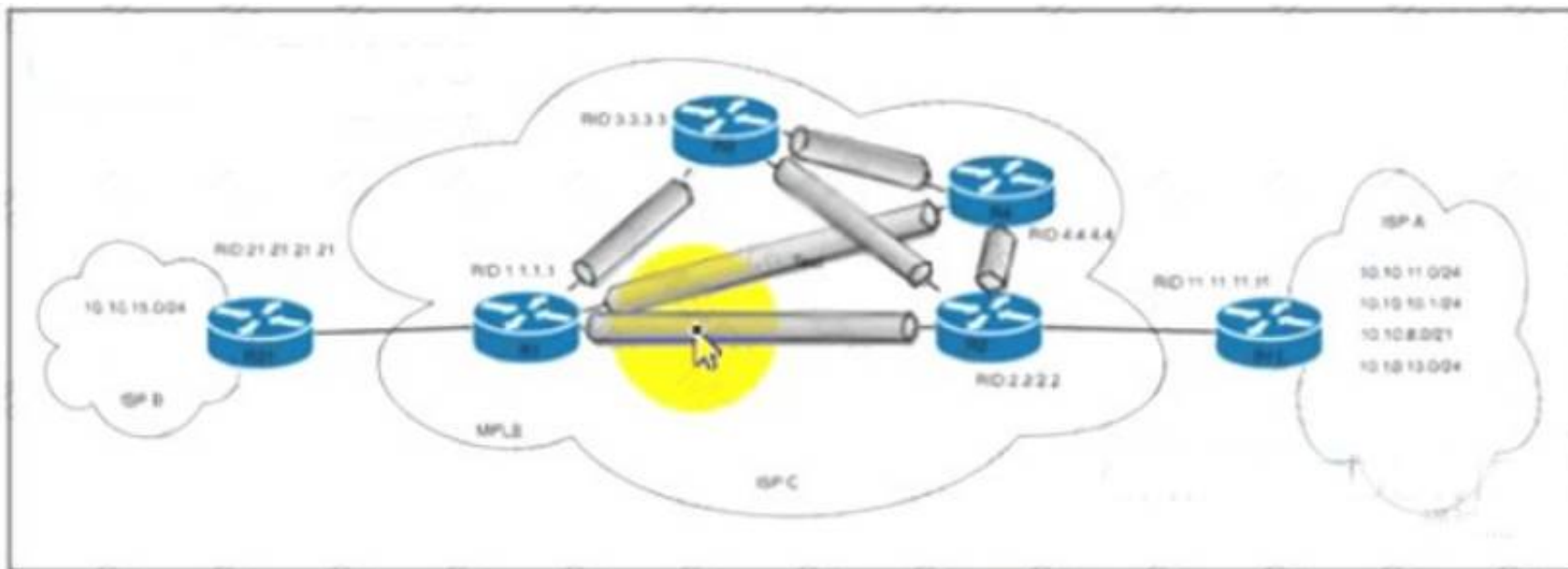
LDP peering between routers R1 and R2 is dropped when the link between R1 and R2 is taken offline. However, LDP peering between R2 and R3 stays up when the link between R2 and R3 is taken offline. Which action allows MPLS traffic forwarding to continue normally if the link between R1 and R2 goes down?

- A. Enable IGP and LDP Synchronization on R1.
- B. Implement LDP Session Protection on R1.
- C. Enable IGP and LDP Synchronization on R2.
- D. Implement LDP Session Protection on R2.

Answer: B

NEW QUESTION 25

Refer to the exhibit



An engineer at ISP C is configuring a new interconnection with ISPs A and B using the BGP protocol. After the initial configuration, the engineer noticed high memory usage and an abnormally large LIB table on router R2. Which two actions must the engineer take on R2 to minimize memory usage? (Choose two.)

- A. Configure Extended ACL 101 with accepted prefixes.
- B. Configure the mpls ldp neighbor 11.11.11.11 labels accept1 command.
- C. Configure Standard ACL 1 with accepted prefixes.
- D. Configure the mpls ldp neighbor 1.1.1.1 labels accept 101 command.
- E. Configure the mpls ldp neighbor 21.21.21.21 labels accept 101 command.

Answer: BC

NEW QUESTION 28

Refer to the exhibit.



A network engineer with an employee ID 4379:43:595 is setting up an IS-IS network with these requirements:

- > Routes with a tag of 80 and IP prefixes other than 192.168.10.20/24 must be redistributed from Level 1 into Level 2.
- > Route leaking must be configured from Level 2 into the Level 1 domain for routes that are tagged with only 50 or 40.

Which configuration must be implemented on RB to meet the requirements?

- A. Add match tag 80 in route-map leak2-1
- B. DUMPS Add match ip address 152 in route-map redistrib1-2
- C. Remove match tag 40 from route-map leak2-1
- D. Change match tag 80 to match tag 50 in route-map redistrib1-2.

Answer: D

NEW QUESTION 31

You are testing the capabilities of MPLS OAM ping. Which statement is true?

- A. MPLS OAM ping works solely with Cisco MPLS TE
- B. MPLS OAM ping works solely with P2P LSPs
- C. An LSP breakage results in the ingress MPLS router never receiving any reply
- D. An LSP is not required for the reply to reach the ingress MPLS router

Answer: D

NEW QUESTION 33

Which MPLS design attribute can you use to provide Internet access to a major customer through a separate dedicated VPN?

- A. The customer that needs the Internet access service is assigned to the same RTs as the Internet gateway
- B. The Internet gateway inserts the full Internet BGP routing table into the Internet access VPN
- C. The Internet gateway router is connected as a PE router to the MPLS backbone.
- D. The CE router supports VRF-Ute and the full BGP routing table.

Answer: B

NEW QUESTION 37

Refer to the exhibit:

```
snmp-server host 192.168.1.1 version 2c public
```

A network administrator wants to enhance the security for SNMP for this configuration. Which action can the network administrator implement?

- A. Re-configure to use SNMPv2 with MD5 authentication
- B. Add a community string to the existing entry
- C. Re-configure to use SNMPv3.
- D. Maintain the configuration but switch to an encrypted password for device access through SSH

Answer: C

NEW QUESTION 40

Refer to the exhibit.

```
POST
https://apic-ip-address/api/mo/uni.xml
<?xml version="1.0" encoding="UTF-8"?>
<!-- api/policymgr/mo/uni.xml -->
<polUni>
  <infraInfra>
    <!-- Static VLAN range -->
    <fvnsVlanInstP name="inband" allocMode="static">
      <fvnsEncapBlk name="encap" from="vlan-5" to="vlan-10"/>
    </fvnsVlanInstP>
  </infraInfra>
</polUni>
```

What does the script configure?

- A. a VLAN namespace
- B. selectors for the in-band management
- C. a physical domain
- D. a static VLAN

Answer: D

NEW QUESTION 41

Which programmable API allows the service provider to plan and optimize the automation of network operations and achieve closed-loop operations?

- A. Network Services Orchestrator
- B. WAN Automation Engine
- C. Evolved Programmable Network Manager
- D. Crosswork Network Automation

Answer: D

NEW QUESTION 46

How much must the MTU be increased when configuring the 802.1q VLAN tag?

- A. 2 bytes
- B. 4 bytes
- C. 8 bytes
- D. 12 bytes

Answer: B

NEW QUESTION 49

Simulation1

Implementing and Operating Cisco Service Provider Network

Comment

Time Remaining

Guidelines

Topology

Tasks

350-701

IS-IS Multi-Area Topology

```

R1>enabler1
Translating "enabler1"...domain server (255.255.255.255)
(255.255.255.255)
Translating "enabler1"...domain server (255.255.255.255)
Translating "enabler1"...domain server (255.255.255.255)
Translating "enabler1"...domain server (255.255.255.255)
% Bad IP address or host name
Translating "enabler1"...domain server (255.255.255.255)
% Unknown command or computer name, or unable to find computer address
R1>
                    
```

Guidelines

Topology

Tasks

350-701

Guidelines

This is a lab item in which tasks will be performed on virtual devices.

- Refer to the **Tasks** tab to view the tasks for this lab item.
- Refer to the **Topology** tab to access the device console(s) and perform the tasks.
- Console access is available for all required devices by clicking the device icon or using the tab(s) above the console window.
- All necessary preconfigurations have been applied.
- Do not change the enable password or hostname for any device.
- Save your configurations** to NVRAM before moving to the next item.
- Click **Next** at the bottom of the screen to submit this lab and move to the next question.
- When **Next** is clicked, the lab closes and cannot be reopened.

```

R3>
                    
```

Guidelines

Topology

Tasks

350-701

Configure the IS-IS routing protocol for R1, R2, and R3 according to the topology to achieve these goals:

- Enable IS-IS routing protocol parameters:
 - R1: Routing area tag: 1, Net: 49.0001.0010.0001.0101.00
 - R2: Routing area tag: 2, Net: 49.0001.0010.0002.0202.00
 - R3: Routing area tag: 3, Net: 49.0001.0010.0003.0303.00
- Configure IS-IS IPv4 and IPv6:
 - Only Level 1 adjacency for: R2 and R3 links
 - Only Level 2 adjacency for: R1 and R2 links
 - Only Level 2 adjacency for: R1 and R3 links.
- Configure CLNS Domain and Area password **C1sc0!** for the authentication of all IS-IS adjacency links on R1, R2, and R3. Use the clear text IS-IS authentication mechanism for this task.

Submit feedback about this item

```

R1>enabler1
Translating "enabler1"...domain server (255.255.255.255)
(255.255.255.255)
Translating "enabler1"...domain server (255.255.255.255)
Translating "enabler1"...domain server (255.255.255.255)
Translating "enabler1"...domain server (255.255.255.255)
% Bad IP address or host name
Translating "enabler1"...domain server (255.255.255.255)
% Unknown command or computer name, or unable to find computer address
R1>
                    
```

A. Mastered
 B. Not Mastered

Answer: A

Explanation:

SOLUTION:R1
Config t router isis 1
net 49.0001.0010.0001.0101.00
area-password C1sc0! int et0/0
ip router isis 1
isis authen mode text level-2 isis circuit-type level-2
isis tag 1 int et1/0
ip router isis 1
isis authen mode text level-2 isis circuit-type level-2
isis tag 1 R2
router isis 2
net 49.0001.0010.0002.0202.00
area-password C1sc0! int et0/0
ip router isis 2
isis authen mode text level-2 isis circuit-type level-2
isis tag 2 int et1/0
ip router isis 2
isis authen mode text level-1 isis circuit-type level-1
isis tag 2 R3
router isis 3
net 49.0001.0010.0003.0303.00
area-password C1sc0! int et0/0
ip router isis 3
isis authen mode text level-1 isis circuit-type level-1
isis tag 3 int et1/0
ip router isis 3
isis authen mode text level-2 isis circuit-type level-2
isis tag 3
R1 Verification:



R1
Config t
Ipv6 unicast-routing Router isis 1
Metric-style wide
Address-family ipv6 unicast Multi-topology
Int loop0
Ip router isis 1 Ipv6 router isis 1 Isis tag 1
Int et0/0
Ipv6 router isis 1 Int et1/0
Ipv6 router isis 1 R2
Config t
Ipv6 unicast-routing Router isis 2
Metric-style wide
Address-family ipv6 unicast Multi-topology
Int loop0
Ip router isis 2 Ipv6 router isis 2 Isis tag 2
Int et0/0
Ipv6 router isis 2 Int et1/0
Ipv6 router isis 2 R3
Config t
Ipv6 unicast-routing Router isis 3
Metric-style wide
Address-family ipv6 unicast Multi-topology
Int loop0
Ip router isis 3 Ipv6 router isis 3 Isis tag 3
Int et0/0
Ipv6 router isis 3 Int et1/0
Ipv6 router isis 3


```
R1#show clns neighbors

Tag 1:
System Id      Interface      SNPA              State  Holdtime  Type
Protocol
R2             Et0/0         aabb.cc00.0200    Up     9         L2
IS-IS
R3             Et1/0         aabb.cc00.0301    Up     7         L2
IS-IS

Tag null:
```

R1 Ipv6 Verification:

```
R1#sh ipv6 route
IPv6 Routing Table - default - 8 entries
Codes: C - Connected, L - Local, S - Static, U - Per-user Static route
        B - BGP, HA - Home Agent, MR - Mobile Router, R - RIP
        H - NHRP, I1 - ISIS L1, I2 - ISIS L2, IA - ISIS interarea
        IS - ISIS summary, D - EIGRP, EX - EIGRP external, NM - NEMO
        ND - ND Default, NDp - ND Prefix, DCE - Destination, NDr - Redir
        ect
        RL - RPL, O - OSPF Intra, OI - OSPF Inter, OE1 - OSPF ext 1
        OE2 - OSPF ext 2, ON1 - OSPF NSSA ext 1, ON2 - OSPF NSSA ext 2
        la - LISP alt, lr - LISP site-registrations, ld - LISP dyn-eid
        lA - LISP away, a - Application
C   2000:CC13:CC13:2020::/64 [0/0]
    via Ethernet0/0, directly connected
L   2000:CC13:CC13:2020::1/128 [0/0]
    via Ethernet0/0, receive
I2  2000:CC13:CC13:2021::/64 [115/20]
    via FE80::A8BB:CCFF:FE00:200, Ethernet0/0
C   2000:CC13:CC13:2030::/64 [0/0]
    via Ethernet1/0, directly connected
L   2000:CC13:CC13:2030::1/128 [0/0]
    via Ethernet1/0, receive
I2  2000:CC13:CC13:2031::/64 [115/20]
    via FE80::A8BB:CCFF:FE00:301, Ethernet1/0
I2  2000:CC13:CC13:2040::/64 [115/20]
    via FE80::A8BB:CCFF:FE00:301, Ethernet1/0
L   FF00::/8 [0/0]
    via Null0, receive
R1#
```

R1
Copy run start R2
Copy run start R3
Copy run start

NEW QUESTION 50
Refer to the exhibit:

```
ip flow-export source loopback 0
ip flow-export destination 192.168.1.1
ip flow-export version 5 origin-as
```

It the NetFlow configuration is updated to version 9, which additional piece of information can be reported"?

- A. IPv6 flow information
- B. flow sequence numbers
- C. BGP AS information
- D. IPv4 flow information

Answer: A

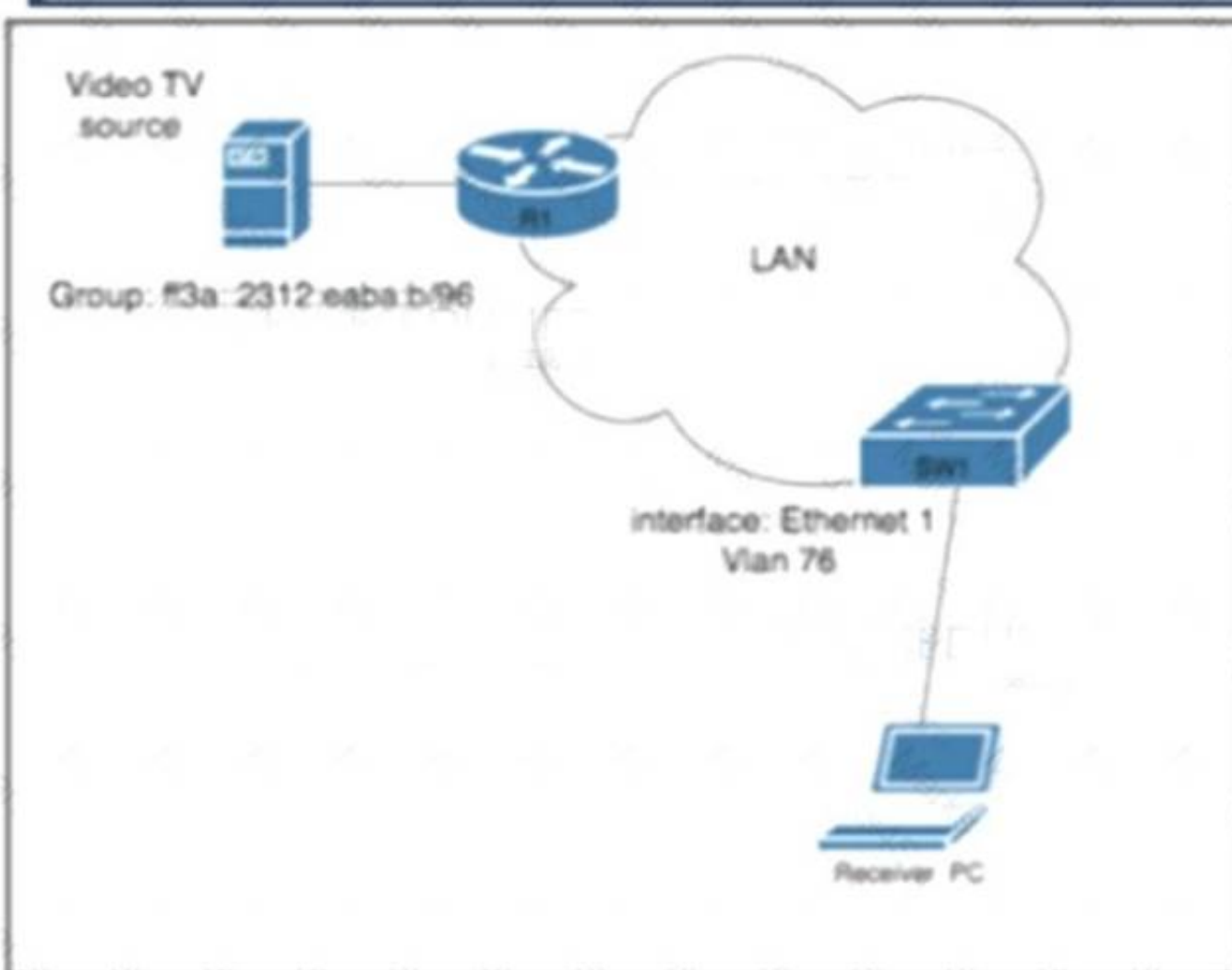
NEW QUESTION 55
FRR is configured on a network. What occurs when the headend router on the path is alerted to a link failure over IGP?
A. LSP attempts fast switching on the backup path until the primary path returns to the active state.

- B. The headend router uses a presignaled LSP to bypass the failure point.
- C. A new backup tunnel is established past the PLR to pass through the protected nodes
- D. Backup tunnel is established and intersects with the primary tunnel at the headend.

Answer: A

NEW QUESTION 60

Refer to the exhibit.



A network engineer working for a telecommunication company with an employee ID: 4602:62:646 is configuring security controls for the IPv6 multicast group, which is used for video TV. The solution from the engineer should reduce network usage and minimize the leave latency for the user that is connected to VLAN 76. Which two configurations meet this goal? (Choose two.)

A)

Apply the following commands globally on SW1:

ipv6 mld vlan 76 fast-leave vlan 76

ipv6 mld security join vlan 76

B)

Configure an ACL to limit the IPv6 multicast group with the entry **permit ipv6 any ff3a::2312:eaba:b/96**.

C)

Configure an ACL to limit the IPv6 multicast group with the entries **ipv6 access-list security_access_list** and **permit ipv6 ff3a::2312:eaba:b/96 any**.

D)

Apply the following commands globally on SW1:

ipv6 mld vlan 76 immediate-leave

ipv6 mld snooping

E)

Apply the following commands globally on SW1:

ipv6 mld snooping multicast optimise-multicast-flood

ipv6 mld snooping fast-leave group security_access_list

A. Option A

B. Option B

C. Option C

D. Option D

E. Option E

Answer: DE

NEW QUESTION 62

Drag and drop the LDP features from the left onto their usages on the right.

session protection	It prevents valid routes from being overwritten with new ones until labels are assigned.
IGP synchronization	It allows stale label bindings to be used for a period of time while an LDP neighbor is unreachable.
targeted-hello accept	It uses LDP Targeted hellos to protect LDP sessions.
graceful restart	It uses LDP to form neighborhood between non-directly connected routers.

- A. Mastered
 B. Not Mastered

Answer: A

Explanation:

graceful restart
IGP synchronization
session protection
targeted-hello accept

NEW QUESTION 64

Refer to the exhibit.

```

R1
ip multicast-routing
ip pim rp-candidate GigabitEthernet1/0/0

interface g1/0/0
  ip pim sparse-mode

R2
ip multicast-routing
ip pim bsr-candidate GigabitEthernet1/0/0

interface g1/0/0
  ip pim sparse-mode
  
```

An engineer configured multicast routing on client's network. What is the effect of this multicast implementation?

- A. R2 floods information about R1 throughout the multicast domain.
 B. R2 is unable to share information because the ip pim autorp listener command is missing.
 C. R1 floods information about R2 throughout the multicast domain.
 D. R2 is elected as the RP for this domain.

Answer: B

NEW QUESTION 67

Refer to me exhibit.

```
CSR1#show flowspec ipv4 detail
AFI: IPv4
Flow      :Dest:10.6.5.0/24,DPort:=80|=443
Actions   :Traffic-rate: 0 bps (bgp.1)
Statistics (packets/bytes)
Matched   :      12/696
Dropped   :      12/696
```

A network operator recently configured BGP FlowSpec for me internal IT network What will be inferred from the configuration deployed on me network?

- A. The policy is configured locally on CSRI and drops all traffic for TCP ports 80 and 443
- B. The policy is learned via BGP FlowSpec and drops all traffic for TCP ports 80 and 443
- C. The policy is warned via BC FlowSpec aid has active traffic
- D. The policy is configured locally on CSR1 and currently has no active traffic

Answer: A

NEW QUESTION 70

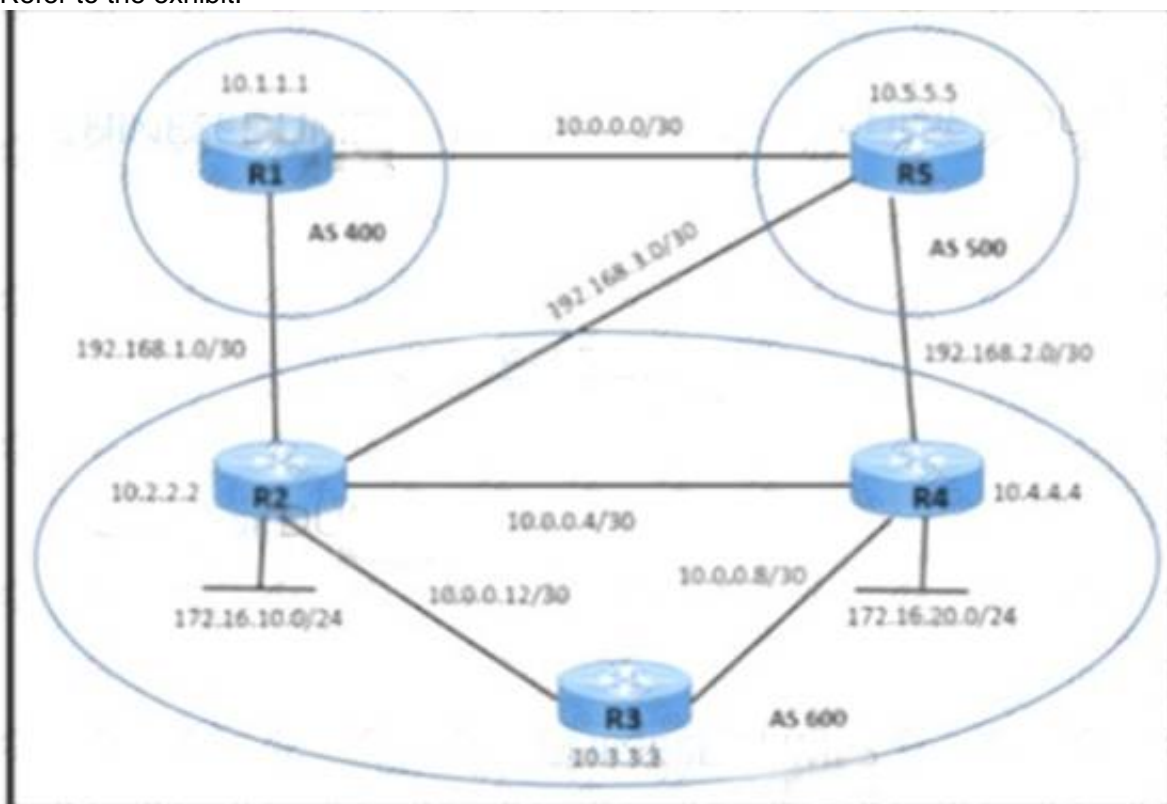
Which function does RSVP perform in a Cisco MPLS TE environment?

- A. It establishes targeted LDP sessions between neighbors that are directly connected.
- B. It signals to LDP protocol along the path that a Cisco MPLS TE will be configured.
- C. It reserves bandwidth for LDP sessions between routers participating in a Cisco MPLS TE.
- D. It reserves the bandwidth along the path between the head-end and tail-end router.

Answer: D

NEW QUESTION 74

Refer to the exhibit.



A network engineer is implementing iBGP and eBGP between AS 600 and AS 500 with these requirements:

- R2 must wait for 30 seconds before sending BGP updates to R5 for multicast traffic.

Which action must be taken on R2 to meet the requirements?

- A. Configure advertisement-interval 30 In address-family ipv4 unicast
- B. Configure advertisement-Interval 30 in address-family Ipv4 multicast
- C. Apply timers bgp 30 in address-family ipv4 unicast
- D. Apply timers bgp 30 in address-family ipv4 multicast.

Answer: B

NEW QUESTION 78

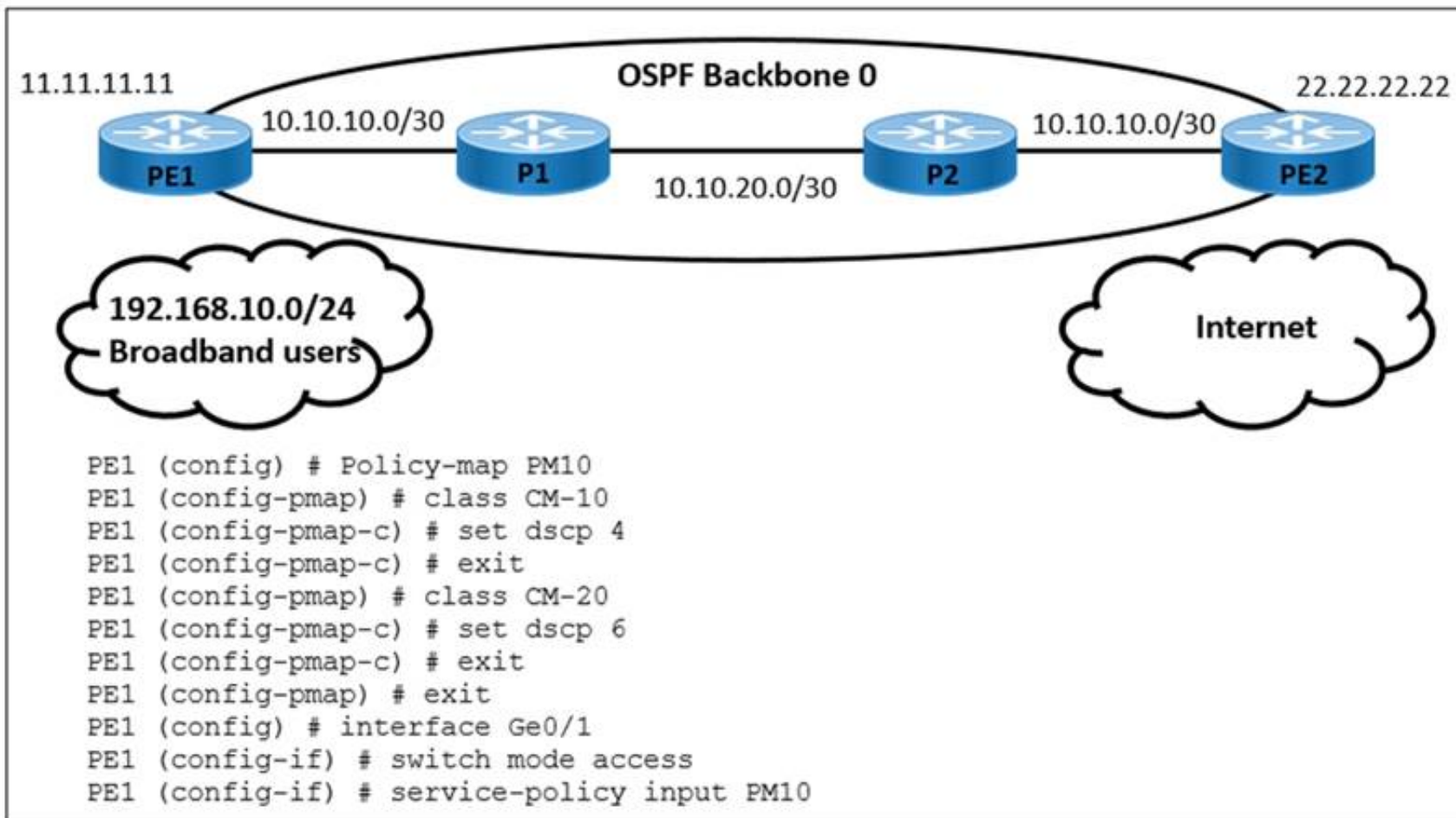
A network engineer is configuring a newly installed PE router at the regional gateway location. The new PE router must use MPLS core routing protocols with the existing P router, and LDP sessions between the two routers must be protected to provide faster MPLS convergence. Which configuration must the engineer perform on the network so that LDP sessions are established?

- A. Enable communication over TCP port 646 for T-LDP hello messages.
- B. Enable RSVP-TE FRR on the LDP interface to protect the LDP session between routers.
- C. Enable LDP session protection on either one of the routers, which allows them to autonegotiate.
- D. Set the LDP session protection timer on each router to the same value.

Answer: C

NEW QUESTION 82

Refer to the exhibit



A user is performing QoS marking on internet traffic and sending it with IPv4 and IPv6 headers on the provider edge device PE1. IPv4 traffic is classified with DSCP 4 and IPv6 traffic is classified with DSCP 6. Which action must the engineer take to begin implementing a QoS configuration on PE1 for the IPv6 traffic?

- A. Create an access list that includes any IPv6 traffic and apply it to CM-20.
- B. Create access list IPv6-match and configure match ip dscp 4 and match ip dscp 6 in class maps CM-10 and CM-20.
- C. Configure match ip dscp 4 in class map CM-10 and match ip dscp 6 in class map CM-20.
- D. Create access list IPv6-filter and remove DSCP value 4 and 6 in class maps CM-10 and CM-20.

Answer: A

NEW QUESTION 85

A customer site is being connected to a Frame Relay network via a T1 link. The customer has a contract for 512 kbps service with a Tc value of 125 ms. Under peak line conditions, customer traffic can reach four times the contracted speed. Which QoS configuration must the service provider implement to limit the customer to the contracted values?

- ☐ policy-map policy_map
 class class_map
 police cir 512000 bc 64000 pir 20480000 be 192000
 conform-action transmit
 exceed-action drop
- ☐ policy-map policy_map
 class class_map
 police cir 512kbps bc 256kbps pir 2Mbps be 9600 kbps
 conform-action transmit
 exceed-action set-de-bit transmit
 violate-action drop
- ☐ policy-map policy_map
 class class_map
 police cir 512000 bc 128000 pir 256000 be 32000
 conform-action transmit
 exceed-action set-be-bit transmit
 exceed-action drop
- ☐ policy-map policy_map
 class class_map
 police cir 512000 bc 32000 pir 64000 be 6400
 conform-action transmit
 violate-action set-dscp-transmit default
 exceed-action drop

- A. Option A
- B. Option B
- C. Option C
- D. Option D

Answer: A

NEW QUESTION 86

Which is the benefit of implementing model-driven telemetry in a service provider environment?

- A. It reduces the number of network monitoring tools that are necessary to verify device statistics.
- B. It increases the efficiency of SNMP by pulling system data to requesting servers.
- C. It reduces or eliminates the need to monitor Layer 2 traffic between switches.
- D. It uses reliable transport to push Information to network monitoring tools

Answer: D

NEW QUESTION 88

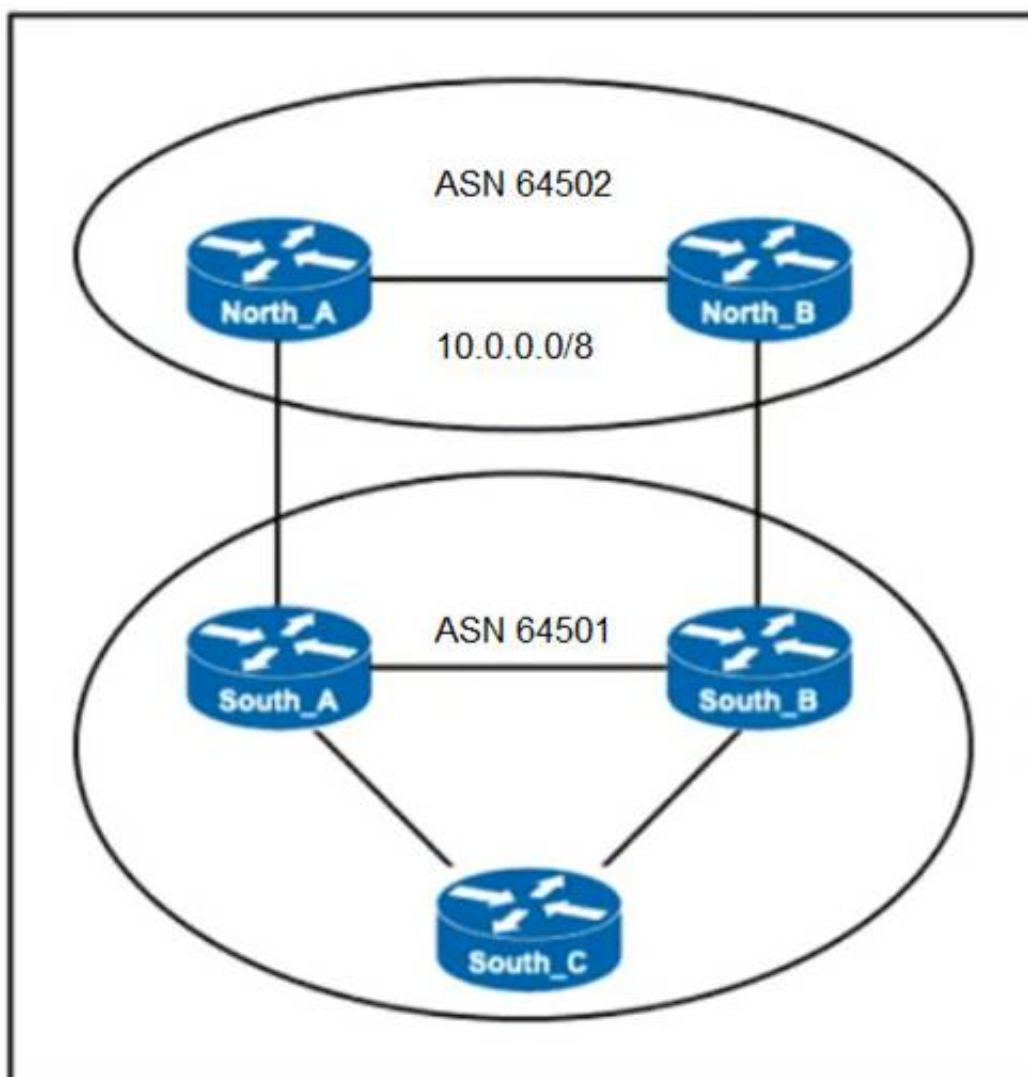
Which regular expression query modifier function indicates the start of a string?

- A. ^
- B. [^]
- C. +
- D. \$

Answer: A

NEW QUESTION 93

Refer to the exhibit.



ASN 64501 currently reaches the networks under the 10.0.0.0/8 prefix via the North_B router, which is a slow backup link. The administrator of ASN 64502 wants traffic from ASN 64501 to 10.0.0.0/8 to travel via the primary link North_A. Which change to the network configuration accomplishes this task?

- A. Set a higher local preference between North_A and South_A
- B. Advertise the 10.0.0.0/8 prefix through North_B and specific subnets through North_A
- C. Set a Lower Weight value for incoming traffic on North_A
- D. Set a lower MED between North_B and South_B

Answer: D

NEW QUESTION 94

How does model-driven telemetry use YANG?

- A. to reset network devices that malfunction
- B. to set informs and traps on clients to report back to a centralized server
- C. to subscribe to data that is streamed from a device
- D. to poll network devices on a 30-minute interval

Answer: C

NEW QUESTION 95

Refer to the exhibit:

```
PE-A#config t
PE-A(config)#interface FastEthernet0/0
PE-A(config-if)#ip ospf message-digest-key 1 md5 44578611
PE-A(config-if)#ip ospf authentication message-digest

PE-B#config t
PE-B(config)#interface FastEthernet0/0
```

An engineer wants to authenticate the OSPF neighbor between PEA and PE-B using MD5. Which command on PE-B successfully completes the configuration?

A)

```
PE-B(config-if)#ip ospf message-digest-key 1 md5 44578611
PE-B(config-if)#ip ospf authentication message-digest
```

B)

```
PE-B(config-if)#ip ospf message-digest-key 1 md5 44568611
PE-B(config-if)#ip ospf authentication null
```

C)

```
PE-B(config-if)#ip ospf message-digest-key 1 md5 44578611
PE-B(config-if)#ip ospf authentication null
```

D)

```
PE-B(config-if)#ip ospf message-digest-key 1 md5 44578611
PE-B(config-if)#ip ospf authentication key-chain 44578611
```

- A. Option A
- B. Option B
- C. Option C
- D. Option D

Answer: A

NEW QUESTION 100

An network engineer is deploying VRF on ASBR router R1. The interface must have connectivity over an MPLS VPN inter-AS Option AB network. Which configuration must the engineer apply on the router to accomplish this task?

A)

```
R1(config)# interface ethernet 1/0
R1(config-if)# ip vrf forwarding CISCO
R1(config-if)# mpls ip
```

B)

```
R1(config)# interface ethernet 1/0
R1(config-if)# ip address 192.168.1.254 255.255.255.0
R1(config-if)# ip vrf forwarding CISCO
R1(config-if)# shutdown
```

C)

```
R1(config)# interface ethernet 1/0
R1(config-if)# ip vrf forwarding CISCO
R1 (config-if)# ip ospf 1 area 0
```

D)

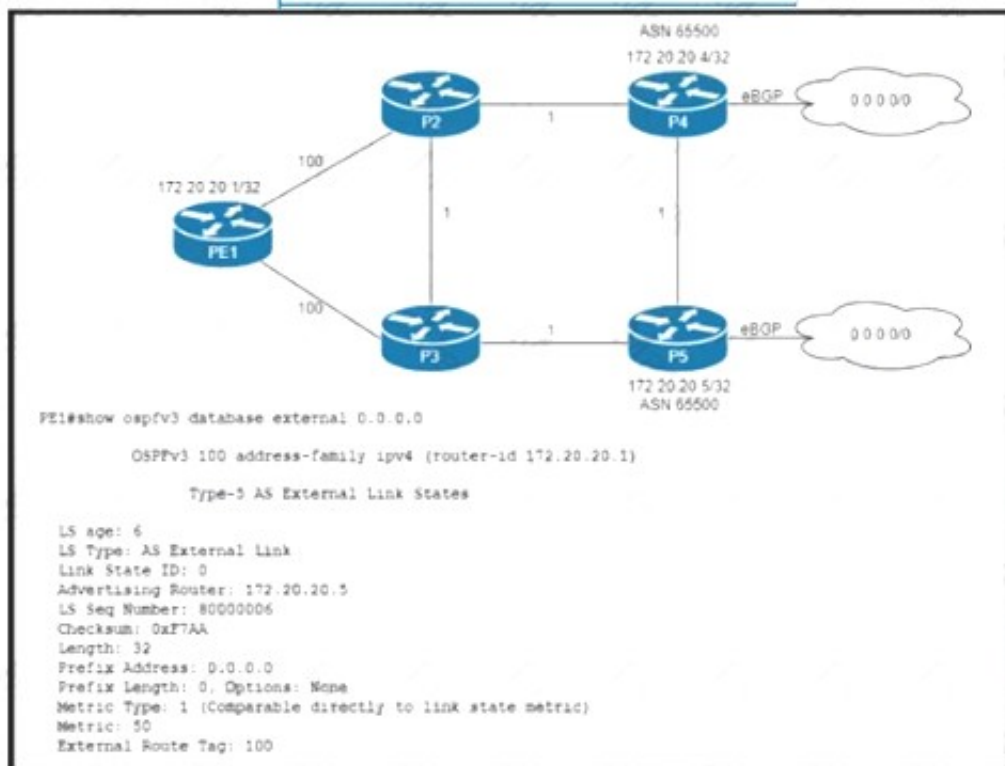
```
R1(config)# interface ethernet 1/0
R1(config-if)# ip vrf forwarding CISCO
R1(config-if)# mpls bgp forwarding
```

- A. Option A
- B. Option B
- C. Option C
- D. Option D

Answer: D

NEW QUESTION 105

Refer to the exhibit.



Router P4 and P5 receive the 0.0.0.0/0 route from the ISP via eBGP peering P4 is the primary Internet gateway router, and P5 is its Backup. P5 is already advertising a default route into OSPF domain. Which configuration must be applied to P4 so that it advertises a default route into OSPF and becomes the primary internet gateway for the network?

- ☐ configure terminal
 router ospfv3 100
 address-family ipv4 unicast
 default-information originate always metric 40 metric-type 1
 end
- ☒ configure terminal
 router ospfv3 100
 address-family ipv4 unicast
 default-information originate metric 40 metric-type 2
 end
- ☐ configure terminal
 router ospfv3 100
 address-family ipv4 unicast
 default-information originate metric 40 metric-type 1
 end
- ☐ configure terminal
 router ospfv3 100
 address-family ipv4 unicast
 redistribute bgp 65500 metric 40 metric-type 1
 end

- A. Option A
- B. Option B
- C. Option C
- D. Option D

Answer: C

NEW QUESTION 108

What are two features of stateful NAT64? (Choose two.)

- A. It uses address overloading.
- B. It provides 1:N translations, so it supports an unlimited number of endpoints.
- C. It requires IPv4-translatable IPv6 address assignments.
- D. It requires the IPv6 hosts to use either DHCPv6-based address assignments or manual address assignments.
- E. It provides 1:1 translation, so it supports a limited number of endpoints.

Answer: AB

NEW QUESTION 112

Refer for the exhibit.

```
import import
from requests import HTTPBasicAuth
auth = HTTPBasicAuth('cisco_device', 'cisco_device')
headers = { 'Accept': 'application/yang-data+json', 'Content-Type': 'application/yang-data+json' }
url = "https://172.168.211.65/restconf/data/Cisco-IOS-XE-native:native/interface/GigabitEthernet=0/1"
payload = """
{
  "Cisco-IOS-XE-native:GigabitEthernet": {
    "ip": {
      "address": {
        "primary": {
          "address": "10.1.131.112",
          "mask": "255.255.255.252"
        }
      }
    }
  }
}
"""

response = requests.patch(url, verify=False)
print ("Done" + response.status)
```

To optimize network operations, the senior architect created this Python 3.9 script for network automation tasks and to leverage Ansible 4.0 playbooks. Devices In the network support only RFC 2617-based authentication What does the script do?

- A. The script logs in via SSH and configures interface GigabitEthernetO/1 with IP address 10.1.131.112/30.
- B. The script leverages REST API calls and configures Interface GlgabilEthemet0/1 with IP address 10.1.131.112/30.
- C. The script performs a configuration sanity check on the device with IP address 172.168.211.65 via HTTP and returns an alert If the payload field falls to match.
- D. The script parses the JSON response from the router at IP address 172 168.211.65 and checks If the interface GigaWtEthernet0/1 with IP address 10.1.131.112 exists on the router.

Answer: D

NEW QUESTION 117

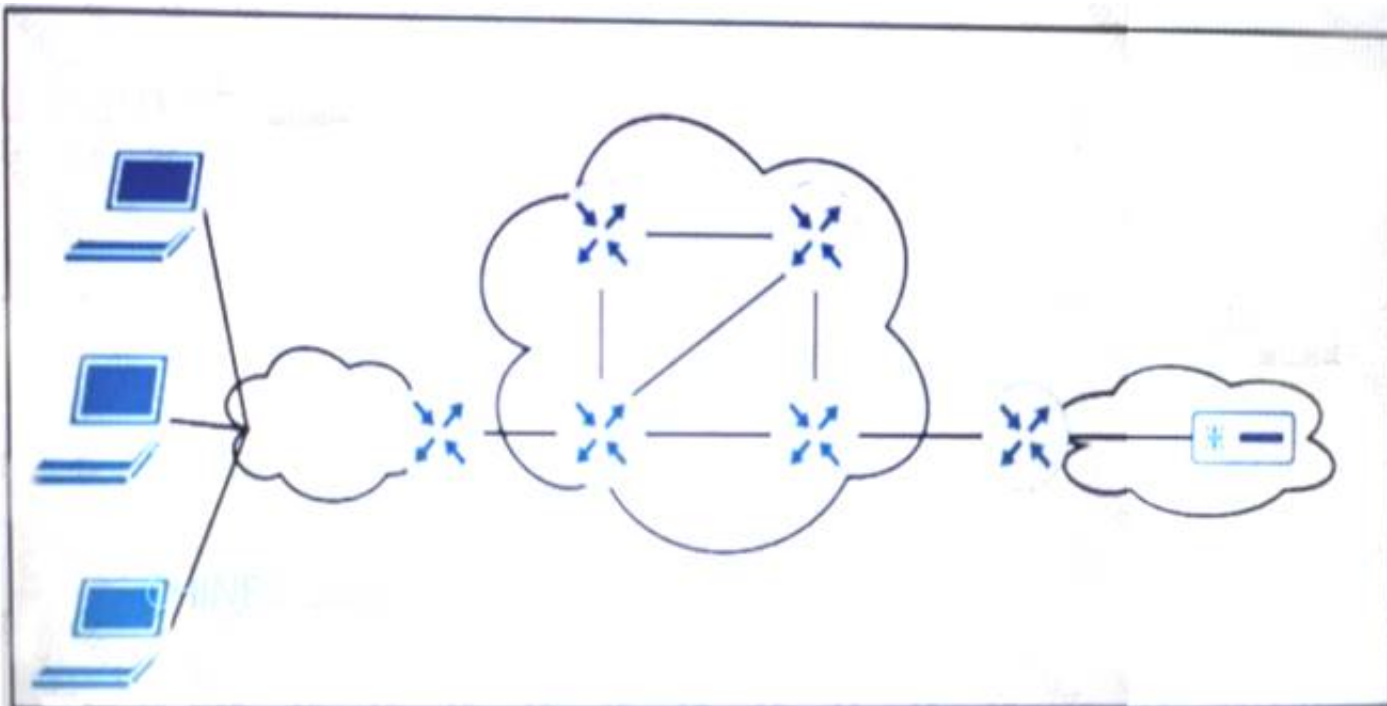
How does Cisco DNA Center enhance network automation?

- A. It allows network administrators to quickly deploy Cisco Layer 2 devices without requiring STP and broadcast transport.
- B. It allows network administrators to reduce inconsistencies when they deploy and validate network configurations.
- C. It allows network administrators to reduce the number of VRFs in a multi customer environment by automatically implementing a single VLAN per customer.
- D. It allows network administrators to combine voice and data networks into a single topology without manual configuration.

Answer: B

NEW QUESTION 120

Refer to the exhibit.



ISP A provides VPLS services and DDoS protection to Company XYZ to connect their branches across the North America and Europe regions. The uplink from the data center to the ISP is Mbps. The company XYZ security team asked the ISP to redirect ICMP requests which are currently going to the web server to a new local security appliance which configuration must an ISPP engineer apply to router R2 to redirect the ICMP traffic?

A)


```
class-map type traffic match-all B_210.10.65.1
match destination-address ipv4 210.10.65.1
match protocol 7
match ipv4 icmp-type 3
```

- B)
- ```
class-map type traffic match-all B_210.10.65.1
match destination-address ipv4 210.10.65.1
match protocol 3
match ipv4 icmp-type 5
```
- C)
- ```
class-map type traffic match-all B_210.10.65.1
match destination-address ipv4 210.10.65.1
match protocol 6
match ipv4 icmp-type 9
```
- D)
- ```
class-map type traffic match-all B_210.10.65.1
match destination-address ipv4 210.10.65.1
match protocol 1
match ipv4 icmp-type 8
```

- A. Option A
- B. Option B
- C. Option C
- D. Option D

**Answer:** D

#### NEW QUESTION 123

What is the role of NSO in network automation?

- A. It is GUI used to manage wireless devices in a campus infrastructure.
- B. It is a type of REST API used to configure an APIC.
- C. It is a tool that uses CLI only to configure virtual network devices.
- D. It is a tool used to bridge automation to the physical network infrastructure.

**Answer:** D

#### Explanation:

<https://www.cisco.com/c/en/us/products/collateral/cloud-systems-management/network-services-orchestrator/data-sheet.html>

NSO provides a robust bridge linking network automation and orchestration tools with the underlying physical and virtual infrastructure.

#### NEW QUESTION 128

Refer to the exhibit.

```
Router 1:

snmp-server group group1 v3 noauth
snmp-server user testuser group1 remote 192.168.0.254
snmp-server host 192.168.0.254 informs version 3 noauth testuser config
```

A network engineer is deploying SNMP configuration on client's routers. Encrypted authentication must be included on router 1 to provide security and protect message confidentiality. Which action should the engineer perform on the routers to accomplish this task?

- A. snmp-server host 192.168.0.254 informs version 3 auth testuser config.
- B. snmp-server user testuser group 1 remote 192.168.0.254 v3 auth md5 testpassword
- C. snmp-server group group 1 v3 auth.
- D. snmp-server community public

**Answer:** B

### NEW QUESTION 130

Drag and drop the characteristics from the left onto the corresponding radio splitting approaches on the right

#### Answer Area

- It requires lower RTT delays.
- It is also known as the fronthaul network.
- It requires high bandwidth.
- It is also known as the midhaul network.

Low-level split

High-level split

- A. Mastered
- B. Not Mastered

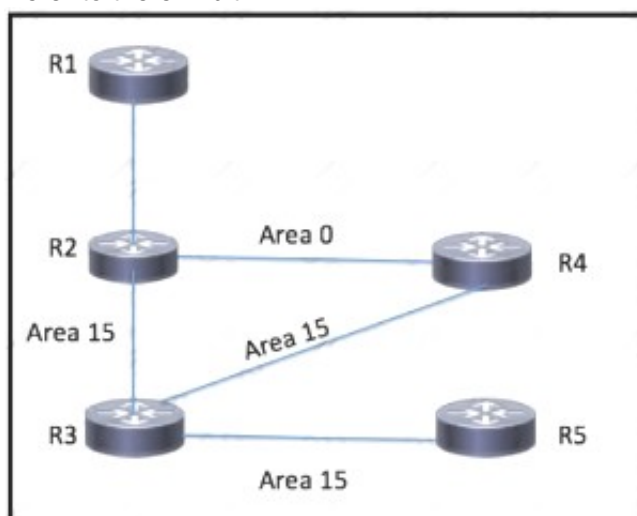
Answer: A

#### Explanation:

<https://www.cisco.com/c/en/us/solutions/service-provider/mobile-internet/5g-transport/converged-5g-xhaul-tran>

### NEW QUESTION 131

Refer to the exhibit.



An engineer has started to configure a router for OSPF, as shown Which configuration must an engineer apply on the network so that area 15 traffic from R5 to R1 will prefer the route through R4?

- A. Place the link between R3 and R5 in a stub area to force traffic to use the route through R4.
- B. Increase the cost on the link between R2 and R4, to influence the path over R3 and R4.
- C. Implement a multiarea adjacency on the link between R2 and R4, with the cost manipulated to make the path through R4 preferred.
- D. Implement a sham link on the between R3 and R2 to extend area 0 area 15.

Answer: B

### NEW QUESTION 136

Drag and drop the OSs from the left onto the correct descriptions on the right.

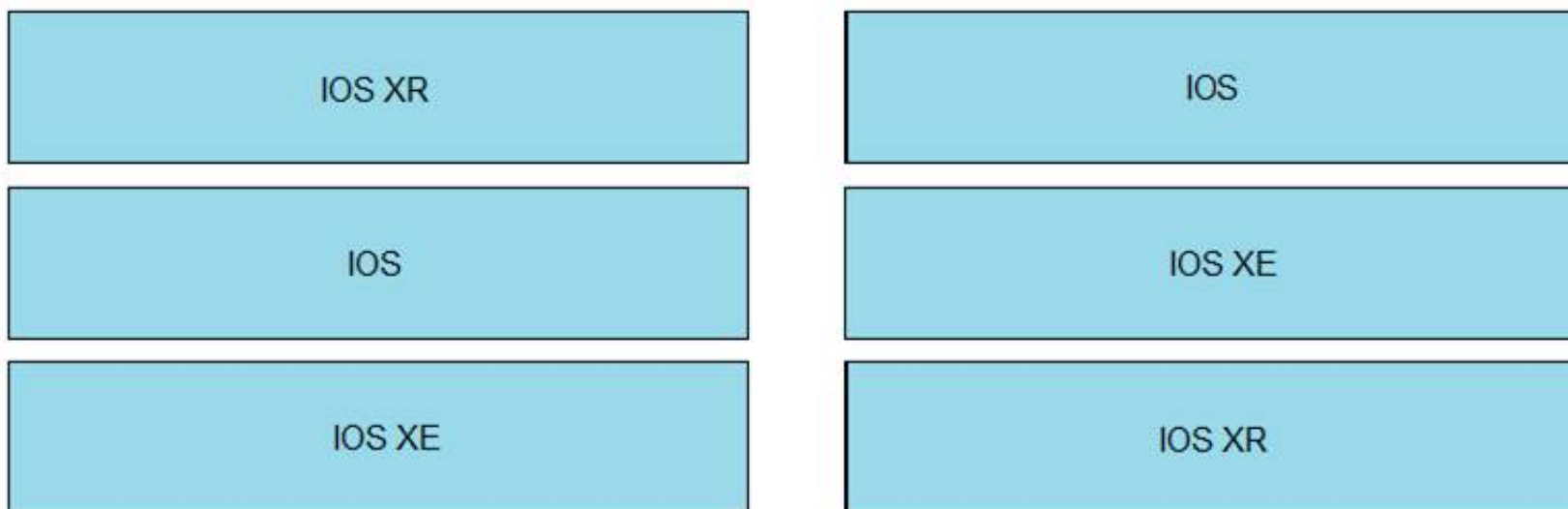
- IOS XR
- IOS
- IOS XE

- It is a monolithic architecture that runs all modules on one memory space.
- It runs over a Linux platform and pulls the system functions out of the main kernel and into separate processes.
- It segments ancillary processes into separate memory spaces to prevent system crashes from errant bugs.

- A. Mastered
- B. Not Mastered

Answer: A

Explanation:



### NEW QUESTION 138

Refer to the exhibit:

```
ip flow-export destination 192.168.1.2
ip flow-export version 9

interface gigabitethernet0/1
ip flow ingress
```

Which information is provided for traceback analysis when this configuration is applied?

- A. BGP version
- B. packet size distribution
- C. source interface
- D. IP sub flow cache

Answer: B

### NEW QUESTION 142

Refer to the exhibit.

```
R1(config)# ipv6 unicast-routing
R1(config)# ipv6 router ospf 100
R1(config-rtr)# router-id 1.1.1.1
```

An engineer is configuring router R1 for OSPFv3 as shown. Which additional configuration must be performed so that the three active interfaces on the router will advertise routes and participate in OSPF IPv6 processes?

A)

```
R1(config)# interface Ethernet1/1
R1(config-if)# ipv6 ospf 100 area 0
```

```
R1(config)# interface Ethernet1/2
R1(config-if)# ipv6 ospf 100 area 10
```

```
R1(config)# interface Ethernet1/3
R1(config-if)# ipv6 ospf 100 area 20
```

B)

```
R1(config)# interface Ethernet1/1
R1(config-if)# ip ospf hello-interval 1
R1(config-if)# ip ospf 1 area 0
```

```
R1(config)# interface Ethernet1/2
R1(config-if)# ip ospf hello-interval 1
R1(config-if)# ip ospf 1 area 10
```

```
R1(config)# interface Ethernet1/3
R1(config-if)# ip ospf hello-interval 1
R1(config-if)# ip ospf 1 area 20
```



C)

```
R1(config)# interface Ethernet1/1
R1(config-if)# ip ospf 1 area 0
```

```
R1(config)# interface Ethernet1/2
R1(config-if)# ip ospf 1 area 10
```

```
R1(config)# interface Ethernet1/3
R1(config-if)# ip ospf 1 area 20
```

A.

**Answer: A**

#### NEW QUESTION 145

Refer to the exhibit:

```
route-policy ciscotest
 if destination in acl10 then
 pass
 else
 set local-preference 300
 endif
end-policy end
```

A network engineer is implementing a BGP routing policy. Which effect of this configuration is true?

- A. All traffic that matches acl10 is allowed without any change to its local-preference
- B. All traffic that matches acl10 is dropped without any change to its local-preference
- C. If traffic matches acl10, it is allowed and its local-preference is set to 300
- D. All traffic is assigned a local-preference of 300 regardless of its destination

**Answer: A**

#### NEW QUESTION 148

Refer to the exhibit:

##### Router 1:

```
ip route 192.0.2.0 255.255.255.0 null 0
ip route 192.168.1.0 255.255.255.0 null 0 tag 1
```

```
route-map ddos
 match tag 1
 set ip next-hop 192.0.2.1
 set local-preference 150
 set community no export
```

```
route-map ddos permit 20
```

```
router bgp 65513
 redistribute static route-map ddos
```

##### Router 2:

```
ip route 192.0.2.0 255.255.255.0 null 0
```

An engineer is preparing to implement data plane security configuration. Which statement about this configuration is true?

- A. Router 1 drops all traffic with a local-preference set to 150
- B. All traffic is dropped
- C. All traffic to 192.168.1.0/24 is dropped
- D. Router 1 and Router 2 advertise the route to 192.0.2.0/24 to all BGPFD peers.

**Answer: C**

#### NEW QUESTION 149

Refer to the exhibit.



Router 1:

```
Interface gigabitethernet0/1
ip address 192.168.1.1 255.255.255.0
ip ospf hello-interval 1
```

```
router ospf 1
network 192.168.1.0 0.0.0.255 area 1
```

Router 2:

```
Interface gigabitethernet0/1
ip address 192.168.1.2 255.255.255.0
ip ospf hello-interval 2
```

```
router ospf 2
network 192.168.1.2 0.0.0.0 area 1
```

What reestablishes the OSPF neighbor relationship between Router 1 and Router 2?

- A. authentication is added to the configuration
- B. correct wildcard mask is used on Router 2
- C. OSPF process IDs match
- D. hello intervals match

Answer: D

#### NEW QUESTION 150

Refer to the exhibits:

```
Apr 30 14:33:43.619: %CLNS-4-AUTH_FAIL: ISIS: LAN IIH authentication failed".
```

R1#show isis neighbors

Tag TEST:

| System Id | Type | Interface | IP Address | State | Holdtime | Circuit Id |
|-----------|------|-----------|------------|-------|----------|------------|
| R2        | L2   | Fa0/0     | UP 9       |       |          | R2.01      |

R2#show isis neighbors

Tag TEST:

| System Id | Type | Interface | IP Address | State | Holdtime | Circuit Id |
|-----------|------|-----------|------------|-------|----------|------------|
| R2        | L1   | Fa0/0     | INIT 22    |       |          | R2.01      |
| R2        | L2   | Fa0/0     | UP 24      |       |          | R2.01      |

R1 and R2 are directly connected and IS-IS routing has been enabled between R1 and R2 R1 message periodically Based on this output, which statement is true?

- A. IS-IS neighbor authentication is failing for Level 2 first and then for Level 1 PDUs
- B. IS-IS neighbor authentication is failing for Level 1 and Level 2 PDUs .
- C. IS-IS neighbor authentication is failing for Level 1 PDUs only
- D. IS-IS neighbor authentication is failing for Level 2 PDUs only.

Answer: C

#### NEW QUESTION 152

Which role does the Adjacency-SID sub-TLV extension perform in the IS-IS routing protocol?

- A. It is advertised within a TLV-24 (IS-IS Neighbor Adjacency Attribute) to label a specific adjacency between Level1 routers within one IS-IS area.
- B. It is advertised within TLV-136 (Extended IP Reachability) to label a specific node in the network.
- C. It is advertised within TLV-22 (Extended IS Reachability) to label a specific link in a segment routing domain.
- D. It is advertised within TLV-145 (IS-IS Prefix Reachability Information) to label host prefixes on loopback interfaces on Level 2 routers within one

Answer: C

#### NEW QUESTION 154

Which set of facts must the network architect consider when deciding whether to implement SaltStack or Chef?

- A. Chef is an agent-based on Ruby, and SaltStack is a module tool based on Python.
- B. Chef refers to its automation instructions as manifests, and SaltStack refers to its instructions as a playbook.
- C. Chef is written in Python, and SaltStack is written in Ruby.
- D. Chef uses a message-based system, and SaltStack uses an agent to deliver messages

Answer: A

#### NEW QUESTION 157

Which characteristic describes prefix segment identifier?

- A. It contains the interface address of the device per each link.
- B. It is globally unique.
- C. It is locally unique.

D. It contains a router to a neighbor.

**Answer: B**

#### NEW QUESTION 161

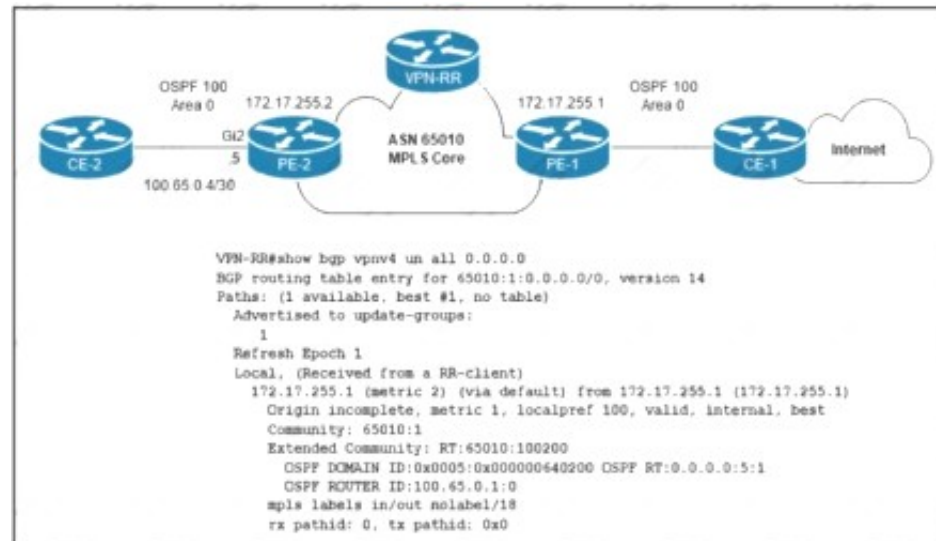
Which configuration mode do you use to apply the mpls ldp graceful-restart command in IOS XE Software? MPLS

- A. MPLS
- B. LDP neighbor
- C. global
- D. interface

**Answer: C**

#### NEW QUESTION 163

Refer to the exhibit.



The network engineer who manages ASN 65010 is provisioning a customer VRF named CUSTOMER-ABC on PE-2. The PE-CE routing protocol is OSPF Internet reachability is available via the OSPF 0 0 0.0/0 route advertised by CE-1 to PE-1 In the customer VRF Which configuration must the network engineer Implement on PE-2 so that CE-2 has connectivity to the Internet?

A)

```
vrf definition CUSTOMER-ABC
rd 65010:1
address-family ipv4
route-target both 65010:1
!
router ospf 100 vrf CUSTOMER-ABC
network 100.65.0.4 0.0.0.3 area 0
redistribute bgp 65010 subnets
default-information originate
!
router bgp 65010
address-family ipv4 unicast vrf CUSTOMER-ABC
redistribute ospf 100 match internal external
```

B)

```
vrf definition CUSTOMER-ABC
rd 65010:2
address-family ipv4
route-target both 65010:100200
!
router ospf 100 vrf CUSTOMER-ABC
network 100.65.0.4 0.0.0.3 area 0
redistribute bgp 65010 subnets
!
router bgp 65010
address-family ipv4 unicast vrf CUSTOMER-ABC
redistribute ospf 100 match internal external
```

C)

```
vrf definition CUSTOMER-ABC
rd 65010:1
address-family ipv4
route-target both 65010:100200
!
router ospf 100 vrf CUSTOMER-ABC
network 100.65.0.4 0.0.0.3 area 0
redistribute bgp 65010 subnets
default-information originate
!
router bgp 65010
address-family ipv4 unicast vrf CUSTOMER-ABC
redistribute ospf 100 match internal external
```

D)

```
vrf definition CUSTOMER-ABC
rd 65010:2
address-family ipv4
route-target both 65010:1
!
router ospf 100 vrf CUSTOMER-ABC
network 100.65.0.4 0.0.0.3 area 0
redistribute bgp 65010 subnets
!
router bgp 65010
address-family ipv4 unicast vrf CUSTOMER-ABC
redistribute ospf 100 match internal external
```

- A. Option A
- B. Option B
- C. Option C
- D. Option D

**Answer: C**

#### NEW QUESTION 166

After a series of unexpected device failures on the network. a Cisco engineer is deploying NSF on the network devices so that packets continue to be forwarded during switchovers The network devices reside in the same holding, but they are physically separated into two different data centers Which task must the engineer perform as part of the deployment?

- A. implement OSPF to maintain the link-state database during failover.
- B. implement VRFs and specify the forwarding instances that must remain active during failover.
- C. implement an L2VPN with the failover peer to share state Information between the active and standby devices.
- D. implement Cisco Express Forwarding to provide forwarding during failover

**Answer: B**

#### NEW QUESTION 171

Refer to the exhibit.

```
Control Plane Interface
Service policy CoPP-normal
Hardware Counters:
class-map: CoPP-normal (match-all)
Match: access-group 100
police :
6000 bps 1000 limit 1000 extended limit
Earl in slot 3 :
0 bytes
5 minute offered rate 0 bps
aggregate-forwarded 0 bytes action: transmit
exceeded 0 bytes action: drop
aggregate-forward 0 bps exceed 0 bps
Earl in slot 5 :
0 bytes
5 minute offered rate 0 bps
aggregate-forwarded 0 bytes action: transmit
exceeded 0 bytes action: drop
aggregate-forward 0 bps exceed 0 bps
```

Which show command shows statistics for the control plane policy and is used to troubleshoot?

- A. show control-plane CoPP
- B. show control-plane



- C. show policy-map control-plane
- D. show policy control-plane

**Answer: C**

**Explanation:**

```
Router# show policy-map control-plane

Control Plane

Service-policy input:TEST

Class-map:TEST (match-all)
 20 packets, 11280 bytes
 5 minute offered rate 0 bps, drop rate 0 bps
 Match:access-group 101
 police:
 8000 bps, 1500 limit, 1500 extended limit
 conformed 15 packets, 6210 bytes; action:transmit
 exceeded 5 packets, 5070 bytes; action:drop
 violated 0 packets, 0 bytes; action:drop
 conformed 0 bps, exceed 0 bps, violate 0 bps
```

#### NEW QUESTION 174

What are two features of stateful NAT64?

- A. It provides 1: N translations, so it supports an unlimited number of endpoints
- B. It provides 1:1 translation so it supports a limited number of end points
- C. It requires the ipv6 hosts to use either DHCPv6 based address assignments or manual address assignments
- D. It uses address overloading
- E. It requires IPv4 translatable IPv6 address assignments

**Answer: AD**

#### NEW QUESTION 175

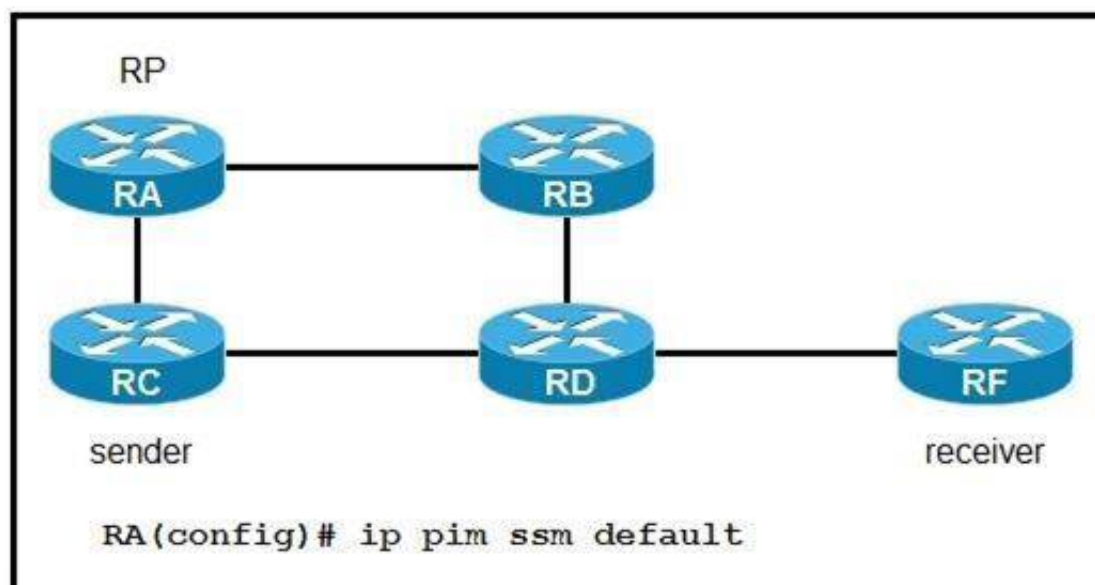
Which feature describes the weight parameter for BGP path selection?

- A. Its value is local to the router
- B. Its value is set either locally or globally.
- C. Its default value is 0.
- D. Its value is global to the router.

**Answer: A**

#### NEW QUESTION 179

Refer to the exhibit:



If router RA is configured as shown, which IPv4 multicast address space does it use?

- A. 224.0. 0.0/8
- B. 225.0. 0.0/8
- C. 232.0. 0.0/8
- D. 239.0. 0.0/8

**Answer: C**

#### NEW QUESTION 183

Refer to the exhibit.

router ospf 1  
 segment-routing mpls  
 segment-routing forwarding mpls

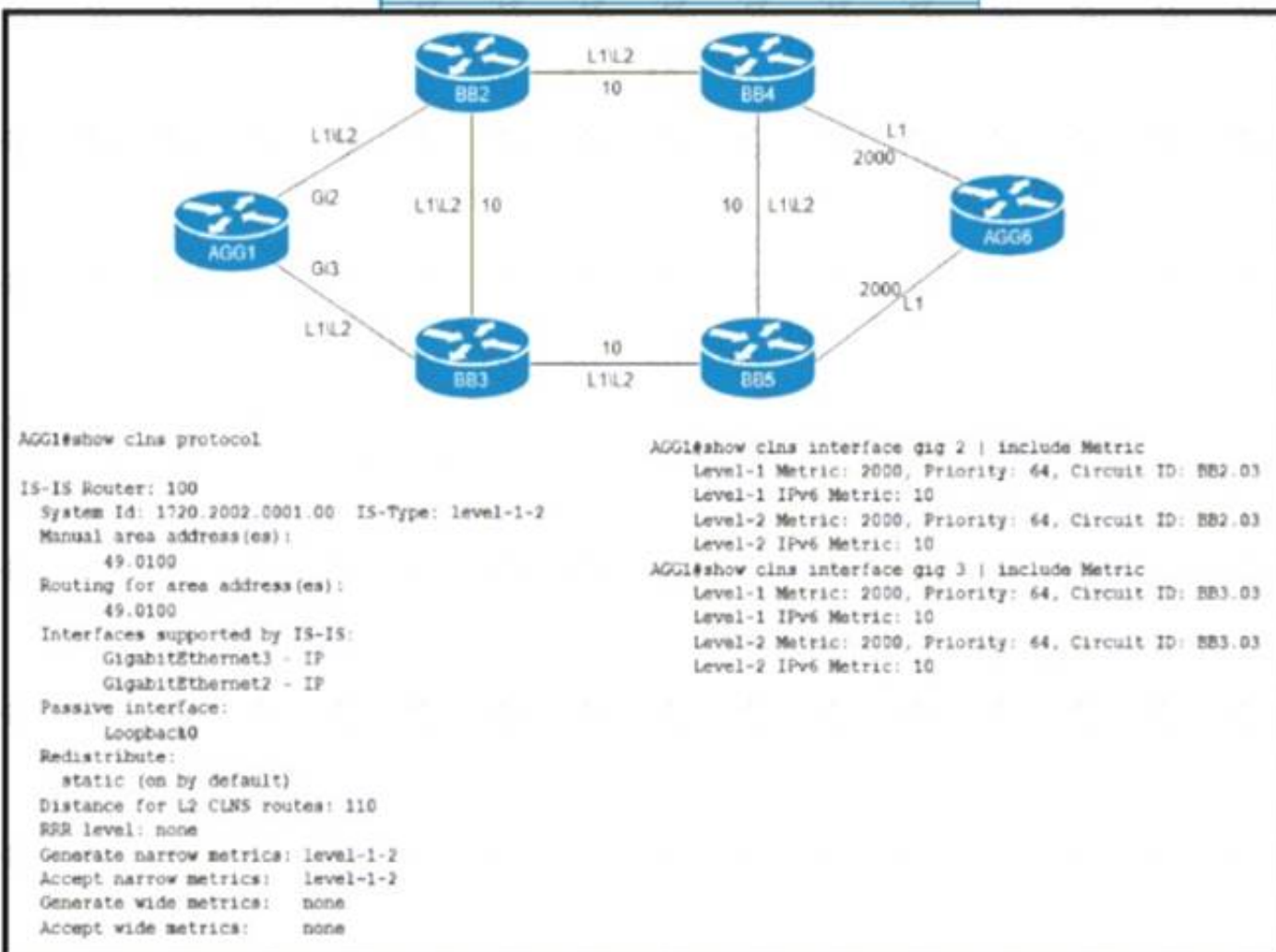
An engineer is configuring segment routing on an ISP to simplify traffic engineering and management across network domains. What should the engineer do to complete the implementation of segment routing?

- A. OSPF must be configured with wide area metrics to support routing.
- B. The segment will run without any further configuration.
- C. Area authentication must be enable before segment routing will run.
- D. Area Authentication must be enable before segment routing will run.

**Answer: C**

#### NEW QUESTION 188

Refer to the exhibit.



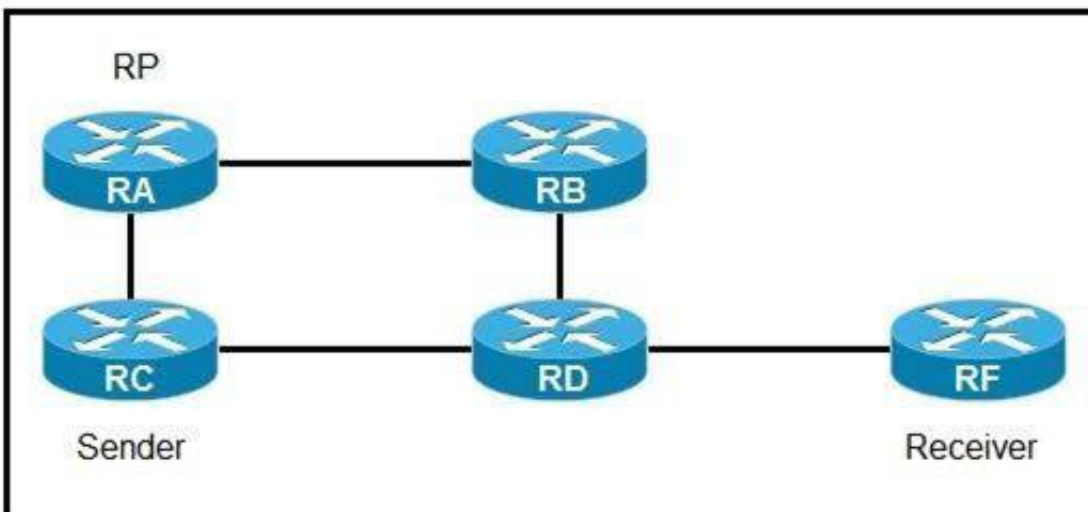
An engineer is configuring IS-IS on ISP network. Which IS-IS configuration must an engineer implement on router AGG1 so that it establishes connectivity to router AGG6 via the BB3 core router?

- A. router isis 100 metric-style narrowinterface GigabitEthernet 3 isis metric 10 level-2
- B. router isis 100 metric-style wideinterface GigabitEthernet 3 isis metric 1500 level-2
- C. router isis 100 metric-style narrowinterface GigabitEthernet 3 isis metric 10 level-1
- D. router isis 100 metric-style wideinterface GigabitEthernet 3 isis metric 1500 level-1

**Answer: C**

#### NEW QUESTION 189

Refer to the exhibit:



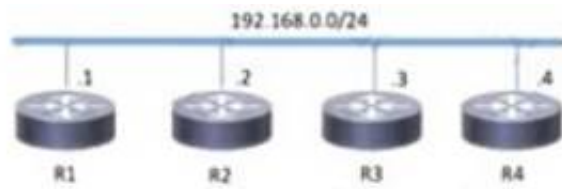
If router A is the RP, which PIM mode can you configure so that devices will send multicast traffic toward the RP?

- A. PIM-SM
- B. PIM-DM
- C. BIDIR-PIM
- D. PIM-SSM

**Answer: C**

#### NEW QUESTION 192

Refer to the exhibit.



|                                                                                                                                                            |                                                                                                                                                            |
|------------------------------------------------------------------------------------------------------------------------------------------------------------|------------------------------------------------------------------------------------------------------------------------------------------------------------|
| <b>R1</b><br>router isis<br>net 52.0011.0000.0000.0001.00<br><br>interface gigabitethernet0/1<br>ip address 192.168.0.1<br>255.255.255.0<br>ip router isis | <b>R3</b><br>router isis<br>net 52.0022.0000.0000.0003.00<br><br>interface gigabitethernet0/1<br>ip address 192.168.0.3<br>255.255.255.0<br>ip router isis |
| <b>R2</b><br>router isis<br>net 52.0022.0000.0000.0002.00<br><br>interface gigabitethernet0/1<br>ip address 192.168.0.2<br>255.255.255.0<br>ip router isis | <b>R4</b><br>router isis<br>net 52.0011.0000.0000.0004.00<br><br>interface gigabitethernet0/1<br>ip address 192.168.0.4<br>255.255.255.0<br>ip router isis |

Which two topology changes happen to the IS-IS routers? (Choose two.)

- A. All four routers are operating as Level 1 routers only.
- B. All four routers are operating as Level 2 routers only.
- C. R1 and R4 are Level 2 neighbours.
- D. R1 and R2 are Level 2 neighbours.
- E. All four routers are operating as Level 1-2 routers.

**Answer: DE**

#### NEW QUESTION 194

Refer to the exhibit.

```
EDGE-GW-1#show bgp ipv4 unicast summary
BGP router identifier 198.19.45.6, local AS number 65502
BGP table version is 19, main routing table version 19

Neighbor V AS MsgRcvd MsgSent TblVer InQ OutQ Up/Down State/PfxRcd
192.168.26.2 4 65503 0 0 1 0 0 00:09:56 Idle

EDGE-GW-1#show log
Log Buffer (4096 bytes):
BGP Notification sent
Dec 7 08:02:29.619: %BGP-5-ADJCHANGE: neighbor 192.168.26.2 passive Down BGP Notification sent
Dec 7 08:02:32.695: %BGP-3-NOTIFICATION: sent to neighbor 192.168.26.2 active 2/2 (peer in wrong AS) 2 bytes FE63
Dec 7 08:02:32.695: %BGP-4-MSGDUMP: unsupported or mal-formatted message received from 192.168.26.2:
FFFF FFFF FFFF FFFF FFFF FFFF FFFF FFFF 0039 0104 FE63 00B4 0AFF FF02 1C02 0601
0400 0100 0102 0280 0002 0202 0002 0246 0002 0641 0400 00FE 63
Dec 7 08:02:36.558: %BGP-3-NOTIFICATION: sent to neighbor 192.168.26.2 passive 2/2 (peer in wrong AS) 2 bytes FE63
Dec 7 08:02:36.558: %BGP-4-MSGDUMP: unsupported or mal-formatted message received from 192.168.26.2:
FFFF FFFF FFFF FFFF FFFF FFFF FFFF FFFF 0039 0104 FE63 00B4 0AFF FF02 1C02 0601
0400 0100 0102 0280 0002 0202 0002 0246 0002 0641 0400 00FE 63
Dec 7 08:02:37.812: %BGP-5-NRB_RESET: Neighbor 192.168.26.2 active reset (BGP Notification sent)
Dec 7 08:02:37.812: %BGP-5-ADJCHANGE: neighbor 192.168.26.2 active Down BGP Notification sent
Dec 7 08:02:37.812: %BGP_SESSION-5-ADJCHANGE: neighbor 192.168.26.2 IPv4 Unicast topology base removed from session
BGP Notification sent
Dec 7 08:02:40.883: %BGP-5-NRB_RESET: Neighbor 192.168.26.2 passive reset (BGP Notification sent)
Dec 7 08:02:40.884: %BGP-5-ADJCHANGE: neighbor 192.168.26.2 passive Down BGP Notification sent
Dec 7 08:02:47.822: %BGP-3-NOTIFICATION: sent to neighbor 192.168.26.2 passive 2/2 (peer in wrong AS) 2 bytes FE63
Dec 7 08:02:77.822: %BGP-4-MSGDUMP: unsupported or mal-formatted message received from 192.168.26.2:
FFFF FFFF FFFF FFFF FFFF FFFF FFFF FFFF 0039 0104 FE63 00B4 0AFF FF02 1C02 0601
0400 0100 0102 0280 0002 0202 0002 0246 0002 0641 0400 00FE 63
```

A network support engineer for ASN 65502 receives a technical support ticket from a customer in ASN 65503 who reports that an eBGP session is down. The engineer determines that the peering failed after a recent change to the device at 192.168.26.2. EDGE-GW-1 must establish an eBGP session with the peering router 192.168.26.2. Which configuration establishes this session?

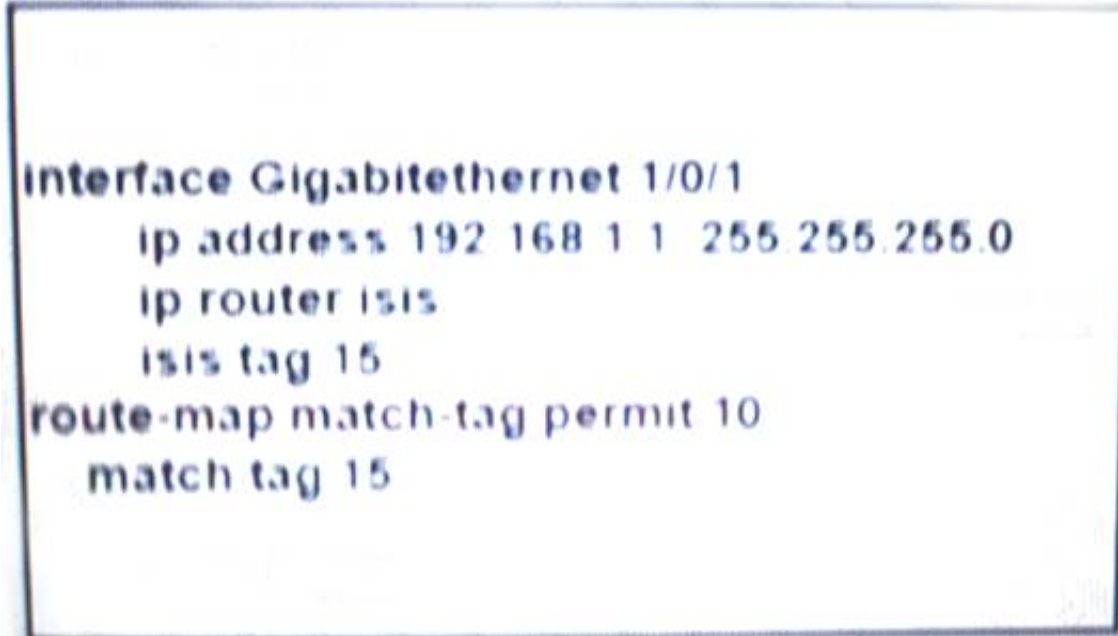


- A. configure terminalno router bgp 65502 router bgp 65503neighbor 192.168.26.2 remote-as 65503 address-family ipv4neighbor 192.168.26.2 activate end
- B. configure terminal router bgp 65502 address-family ipv4neighbor 192.168.26.2 activate end
- C. configure terminal no router bgp 65502 router bgp 65503neighbor 192.168.26.2 remote-as 65123 address-family ipv4neighbor 192.168.26.2 activate end
- D. configure terminal router bgp 65502no neighbor 192.168.26.2 remote-as 65503neighbor 192.168.26.2 remote-as 65123 address-family ipv4neighbor 192.168.26.2 activateend

Answer: B

NEW QUESTION 196

Refer to the exhibit.



A large organization is merging the network assets of a recently acquired competitor with one of its own satellite offices in the same geographic area. The newly acquired network is running different routing protocol than the company's primary network. As part of the merger a network engineer implemented this route map. Which task must the engineer perform to complete the implementation?

- A. Attach the route map to an IS-IS network statement to advertise the routes learned on this interface to IS-IS
- B. Enable metric style wide to allow the use of extended metrics from the protocols
- C. Attach the route map to the redistribution command to manipulate the routes as they are shared
- D. Configure an additional route map sequence to override the implicit deny at the end of the route map

Answer: C

NEW QUESTION 199

Drag and drop the message types from the left onto the target field of the message originator on the right.

Close

Error

Path Computation Reply

Path Computation Request

Originated by PCC to a PCE

Originated by PCE to PCC

Originated by either PCE or PCC

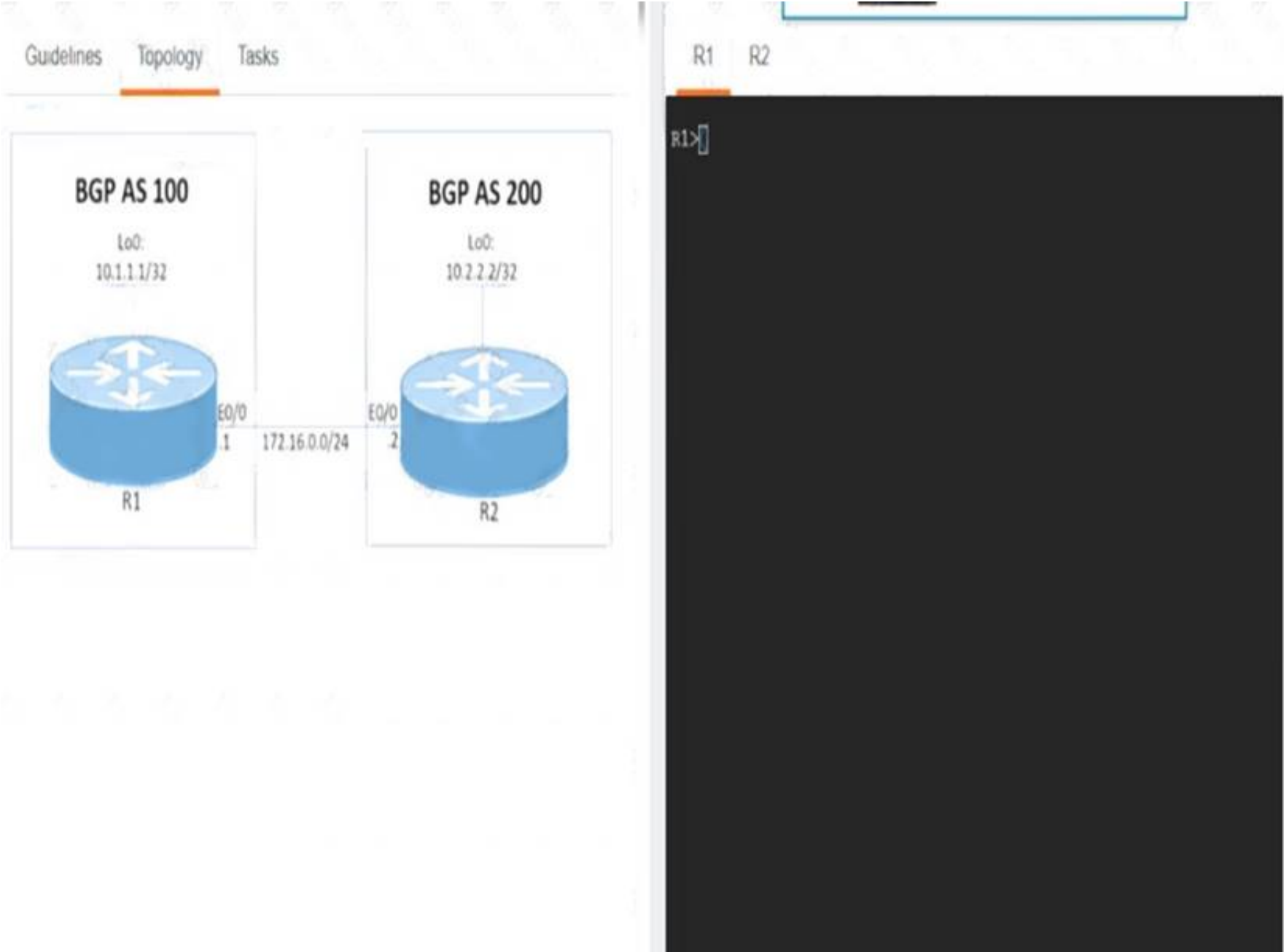
- A. Mastered
- B. Not Mastered

Answer: A

Explanation:



NEW QUESTION 201  
Simulation 6



Guidelines

Topology

Tasks

R1

R2

R1 and R2 currently have an eBGP connection. Configure and verify these tasks on R1 and R2:

1. Apply the preconfigured route map R1-TO-R2 on R1 to receive the R2 Loopback address on R1.
2. Apply the preconfigured route map R2-TO-R1 on R2 to receive the R1 Loopback address on R2.
3. R1 must advertise network 10.1.1.1/32 toward R2.  
Redistribution is not allowed.
4. R2 must advertise network 10.2.2.2/32 toward R1.  
Redistribution is not allowed.

Submit feedback about this item

- A. Mastered  
B. Not Mastered

**Answer:** A

**Explanation:**

R1  
router bgp 100 address-family ipv4  
nei 172.16.0.2 route-map R1-TO-R2 in network 10.1.1.1 mask 255.255.255.255 copy run start  
R2  
router bgp 200  
address-family ipv4  
network 10.2.2.2 mask 255.255.255.255 nei 172.16.0.1 route-map R2-TO-R1 in copy run start

**NEW QUESTION 204**

Refer to the exhibit.

```
<fvTenant name="customer">
 <fvCtx name="customervrf"/>
 <fvBD name="bd1">
 <fvRsCtx tnFvCtxName=" customervrf "/>
 <fvSubnet ip="192.168.0.1/24" scope="public"/>
 <fvRsBDToOut tnL3extOutName="l3out1"/>
 </fvBD>
</fvTenant>
```

What does this REST API script configure?

- A. application profile  
B. VRF  
C. public community string for SNMP  
D. interface with IP address 192.168.0.1

**Answer:** D

**NEW QUESTION 209**

Refer to the exhibit:



```
RP/0/0/CPU0:router# show bgp neighbors 192.168.2.2

BGP neighbor is 192.168.2.2, remote AS 1, local AS 140, external link
Remote router ID 0.0.0.0
BGP state = Idle
Last read 00:00:00, hold time is 180, keepalive interval is 60 seconds
Received 0 messages, 0 notifications, 0 in queue
Sent 0 messages, 0 notifications, 0 in queue
Minimum time between advertisement runs is 15 seconds

For Address Family: IPv4 Unicast
BGP neighbor version 0
Update group: 0.1
eBGP neighbor with no inbound or outbound policy; defaults to 'drop'
Route refresh request: received 0, sent 0
0 accepted prefixes
Prefix advertised 0, suppressed 0, withdrawn 0, maximum limit 524288
Threshold for warning message 75%

Connections established 0; dropped 0
Last reset 00:02:03, due to BGP neighbor initialized
External BGP neighbor not directly connected.
```

Based on the show/ command output, which result is true after BGP session is established?

- A. The IOS XR router advertises all routes to the neighbor 192.168.2.2, but it does not accept any routes from 192.168.2.2
- B. The IOS XR router advertises and accepts all routes to and from eBGP neighbor 192.168.2.2
- C. No routes are accepted from the neighbor 192.168.2.2, nor are any routes advertised to it
- D. The IOS XR router does not advertise any routes to the neighbor 192.168.2.2, but it accepts all routes from 192.168.2.2.

**Answer: B**

#### NEW QUESTION 211

Refer to the exhibit.

```
router(config)# router ospf 11
router(config-if)# passive-interface default
```

An engineer started to configure a router for OSPF. Which configuration must the engineer perform on the router without changing any interface configuration so that the router establishes an OSPF neighbor relationship with its peer?

- A. router(config)# router ospf 11router(config-if)# no passive-interface ethernet 1/1
- B. router(config)# interface ethernet 1/1router(config-if)# no shutdown
- C. router(config)# interface ethernet 1/1router(config-if)# ip ospf hello-interval
- D. router(config)# interface ethernet 1/1router(config-if)# ip ospf priority 0

**Answer: A**

#### NEW QUESTION 216

What is a feature of mVPN?

- A. It requires-uncast to be disabled on the multicast domain
- B. It establishes multiple static MDTs for each multicast domain.
- C. It provides the ability to support multicast over a Layer 3 VPN.
- D. It requires the no ip mroute-cache command to be configured on the loopback interface of each BGP peer

**Answer: C**

#### NEW QUESTION 218

An engineer implemented LDP protocol on the ISP network. The engineer must ensure that there are no packet loss issues when IGP and LDP protocols are not synchronized. Which configuring must the engineer implement so that the IGP routing protocol will wait until LDP convergence is completed?

- A. Disable IP CEF routers running LDP and enable LDP protocol.
- B. Configure MPLS LDP IGP synchronization on the network.
- C. Configure LDP sessions protection on the network.
- D. Disable MPLS LDP IGP synchronization on the network.

**Answer: B**

#### NEW QUESTION 223

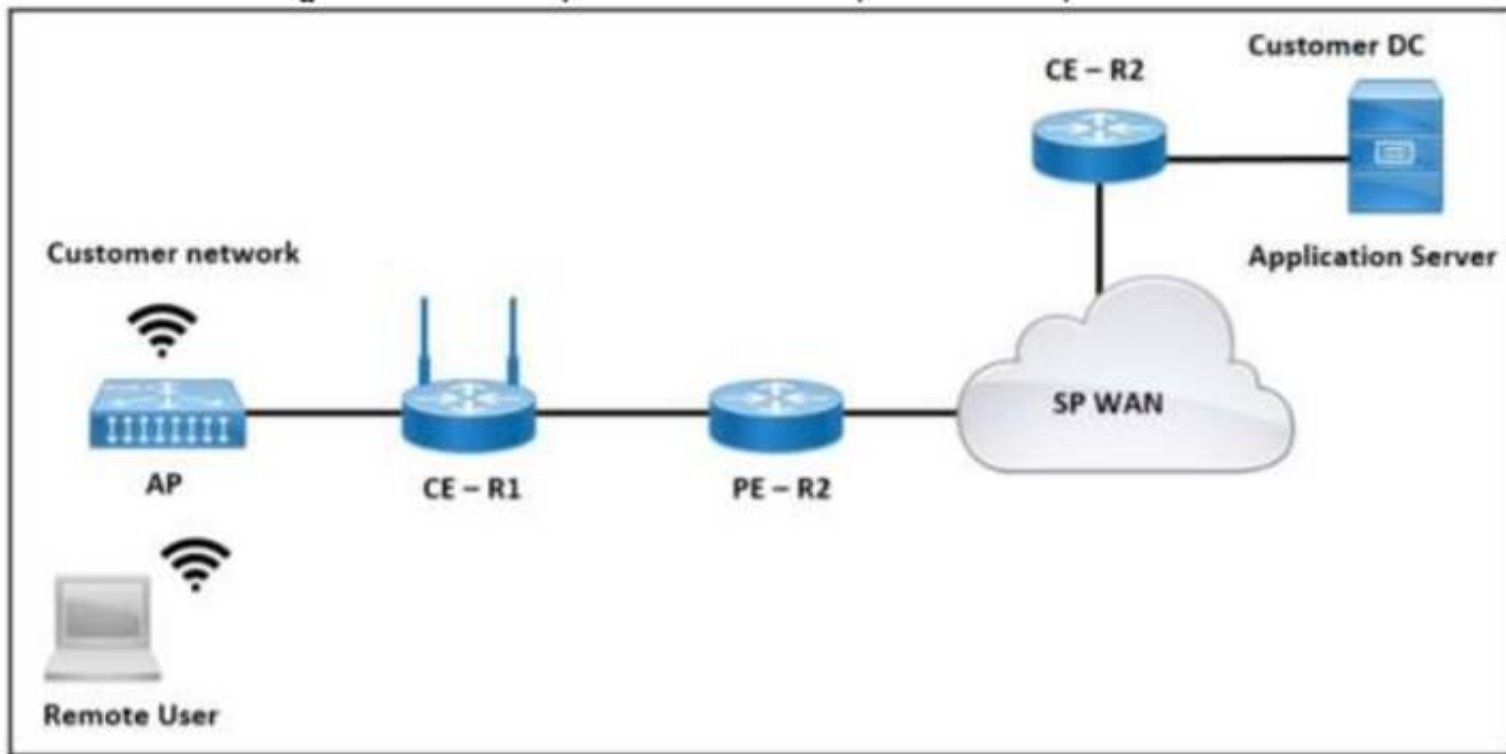
A network architect must implement CSC VPN services for a new backbone carrier. Which two benefits does the architecture provide? (Choose two.)

- A. It maintains a single backbone, which simplifies the VPN implementation to customers.
- B. It eliminates the need to maintain a centralized network-maintenance and operations strategy.
- C. It leverages IPsec to establish connections within the backbone
- D. which eliminates the need for BGP to distribute routes.
- E. It supports a scalable growth strategy that services multiple customers efficiently
- F. It relies on IP communications, which simplifies the network design.

Answer: AD

#### NEW QUESTION 225

Refer to the exhibit.



The application server in the data center hosts voice, video, and data applications over the internet. The data applications run more slowly than the voice and video applications. To ensure that all applications run smoothly, the service provider decided to implement a QoS policy on router PER 2 to apply traffic shaping. Which two actions must an engineer take to implement the task? (Choose two.)

- A. Configure the scheduling function to handle delayed packets.
- B. Enable packet remarking for priority traffic.
- C. Configure a queue to buffer excess traffic.
- D. Set the token value for secondary traffic.
- E. Set a threshold to discard excess traffic.

Answer: AC

#### NEW QUESTION 227

Refer to the exhibit:



What does this value mean when it is received in XML?

- A. It shows the ending of the script
- B. It indicates a break in a sequence
- C. It indicates a value assigned by a network administrator to tag a route
- D. It means a data field is blank

Answer: D

#### NEW QUESTION 228

The network-engineering team of a service provider is integrating several recently acquired networks into a more scalable common Unified MPLS architecture. The new network architecture will support end-to-end VPNv4 and VPNv6 services with these requirements:

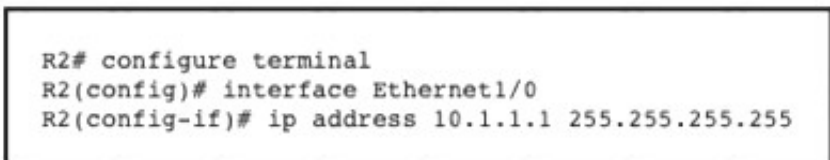
- The IGP of the core layer is IS-IS In Area 0.
  - The IGP of the aggregation layers is OSPF in Area 0.
  - The LDP protocol is used to distribute label bindings within each IGP domain.
- Which task must the network engineer perform when implementing this new architecture?

- A. Configure BGP-LU between ABR routers of each IGP domain to carry MPLS label information in NLRI.
- B. Configure a BGP session between the ABR routers of each IGP domain to exchange VPNv4 or VPNv6 prefixes
- C. Configure the ABR in each IGP domain to preserve next-hop information on all VPNv4 and VPNv6 prefixes advertised by the PE.
- D. Configure mutual redistribution of each IGP domain's loopback prefix to provide end-to-end LDP LSP

Answer: A

#### NEW QUESTION 233

Refer to the exhibit.



An engineer is configuring two routers to support MPLS LDP sessions between them. The R1 configuration is complete, and work has started on R2 as shown. Which additional configuration must the engineer apply to R2 to complete the task?

- ☐ R2(config)# mpls label protocol ldp  
R2(config)# interface Ethernet1/0  
R2(config-if)# mpls bgp forwarding
- ☐ R2(config)# mpls label protocol ldp  
R2(config)# interface Ethernet1/1  
R2(config-if)# ip vrf forwarding CISCO  
R2(config-if)# ip ospf network point-to-point
- ☐ R2(config)# mpls ip  
R2(config)# mpls label protocol ldp  
R2(config)# interface Ethernet1/0  
R2(config-if)# mpls ip
- ☐ R2(config)# mpls label protocol ldp  
R2(config)# interface Ethernet1/0  
R2(config-if)# ip vrf forwarding CISCO  
R2(config-if)# ip ospf 1 area 0

- A. Option A
- B. Option B
- C. Option C
- D. Option D

**Answer: C**

#### NEW QUESTION 237

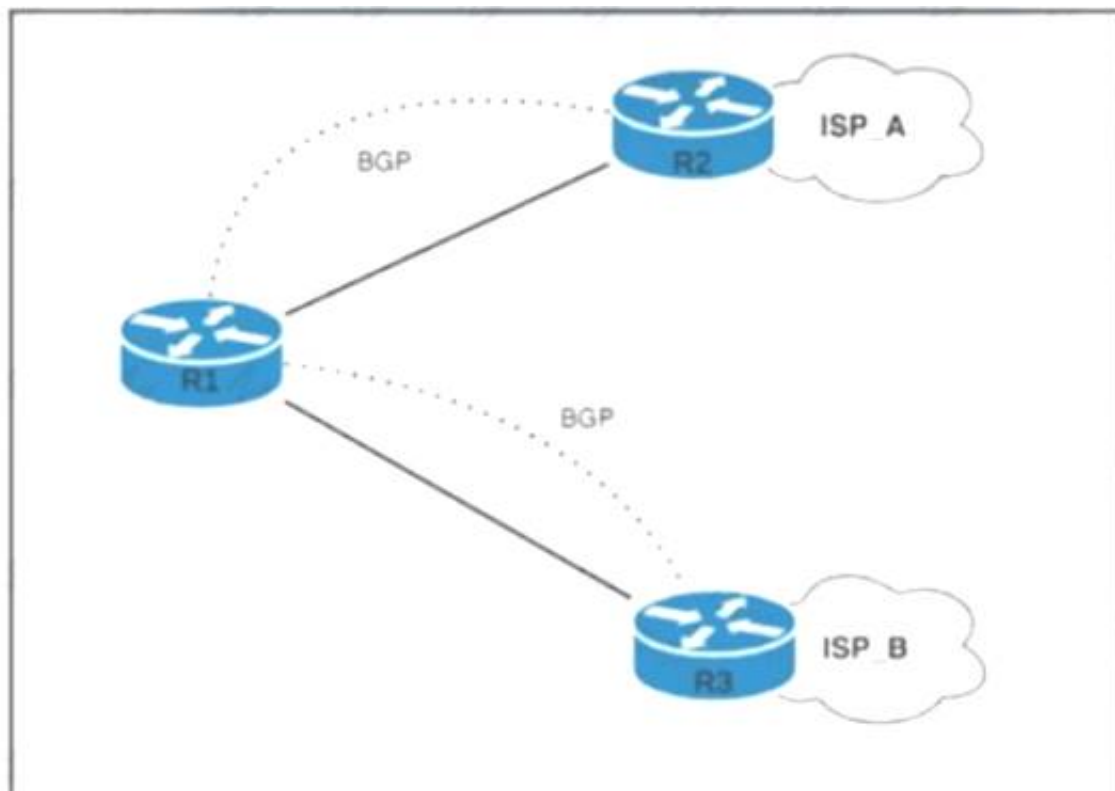
An engineer is trying to implement BGP in a multihomed architecture. What must the engineer configure to influence inbound path selection?

- A. A route map with WEIGHT attribute to control the inbound traffic.
- B. An offset list to set the metric for routes received from neighboring autonomous systems.
- C. An access list to identify traffic and enable it on both of the provider-facing interfaces.
- D. A route map with AS\_PATH attribute to control the inbound traffic.

**Answer: D**

#### NEW QUESTION 241

Refer to the exhibit.



R1 has two upstream Tier 1 service providers. BGP is in use as the exterior routing protocol, and ISP\_A and ISP\_B are sending the full BGP table. A network engineer must assign local-preference 70 to all routes with multiple exit discriminator 30. Which configuration must the network engineer apply?



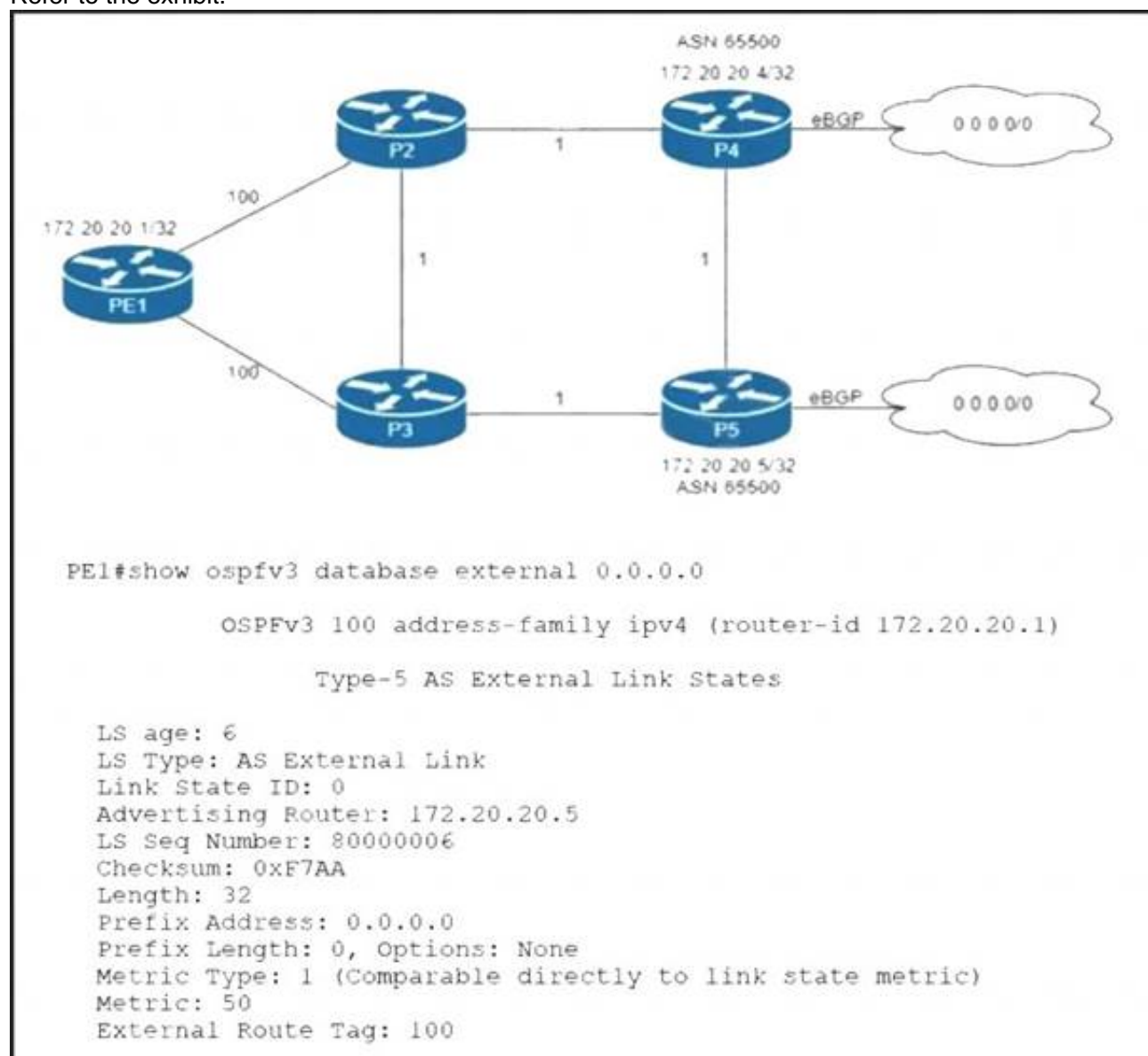
- ☐ route-policy routepolicy  
if destination in (0.0.0.0/0) and (med = 30) then  
set local-preference 170  
else  
set local-preference 70  
drop  
endif  
end-policy
- ☐ route-policy routepolicy  
if destination 0.0.0.0/0 and med 30 then  
set local-preference 70  
else  
drop  
endif  
end-policy
- ☐ route-policy routepolicy  
if med eq 30 then  
set local-preference 70  
else pass  
endif  
end-policy
- ☐ route-policy routepolicy  
if destination in (.) and med eq 70 then  
set local-preference 30  
else  
drop  
endif  
end-policy

- A. Option A  
 B. Option B  
 C. Option C  
 D. Option D

Answer: C

#### NEW QUESTION 243

Refer to the exhibit.



Routers P4 and P5 receive the 0.0.0.0/0 route from the ISP via eBGP peering. P4 is the primary Internet gateway router, and P5 is its backup. P5 is already advertising a default route into the OSPF domain. Which configuration must be applied to P4 so that it advertises a default route into OSPF and becomes the primary Internet gateway for the network?

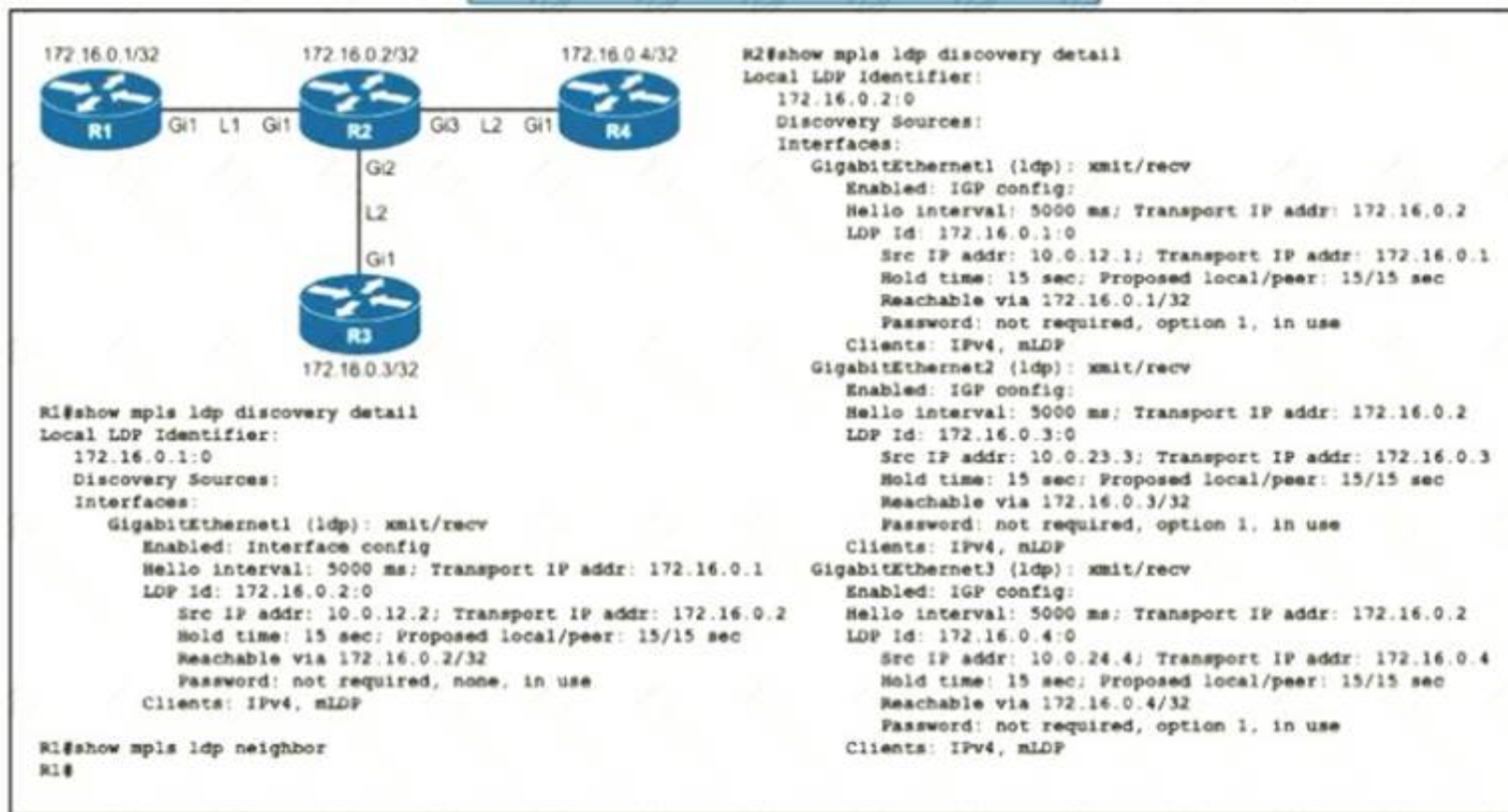
- A. configure terminalrouter ospfv3 100address-family ipv4 unicastdefault-information originate metric 40 metric-type 2 end
- B. configure terminal router ospfv3 100address-family ipv4 unicastdefault-information originate metric 40 metric-type 1 end
- C. configure terminal router ospfv3 100address-family ipv4 unicastredistribute bgp 65500 metric 40 metric-type 1 end

D. configure terminal router ospfv3 100address-family ipv4 unicastdefault-information originate always metric 40 metric-type 1 end

**Answer:** A

#### NEW QUESTION 248

Refer to the exhibit.



An engineer began to configure LDP between R1 and R2, but R1 and R2 cannot yet establish an LDP TCP connection. Which additional task must be completed to finish the implementation?

- A. Configure the mpls ldp neighbor 172.16.0.1 password command on R1
- B. Configure the mpls ldp neighbor 10.0.12.1 password command on R1
- C. Configure the no mpls ldp password option 1 command on R2
- D. Configure the no mpls ldp password option 1 command on R1

**Answer:** A

#### NEW QUESTION 251

You are creating new Cisco MPLS TE tunnels. Which type of RSVP message does the headend router send to reserve bandwidth on the path to the tunnel's router?

- A. error
- B. reservation
- C. path
- D. tear

**Answer:** C

#### NEW QUESTION 252

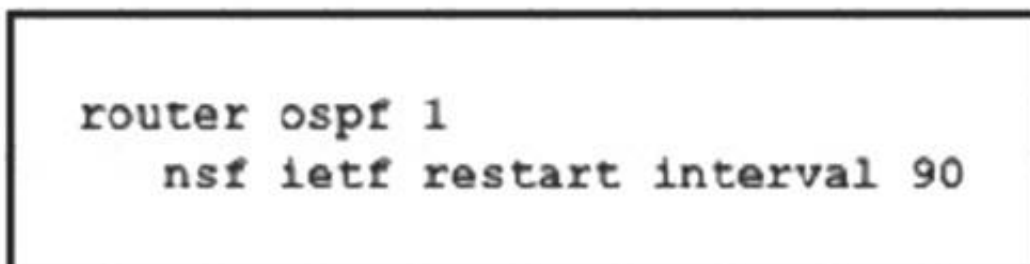
What occurs when a high bandwidth multicast stream is sent over an MVPN using Cisco hardware?

- A. The traffic uses the default MDT transmit the data Only if it is a (S, G) multicast route entry.
- B. A data MDT is created if is a Multicast route entries
- C. A data and default MDT are created to flood the multicast stream of all PIM-SM neighbors.
- D. A data MDT is created to allow for the best transmit through the core for multicast route entries.

**Answer:** D

#### NEW QUESTION 255

Refer to the exhibit:



Which purpose of implementing NSF with this configuration is true?

- A. The router uses NSF to load balance traffic between two links, with the primary link alternating every 90 seconds
- B. The router uses NSF to reduce neighbor-relationship downtime during RP switchover
- C. The router uses NSF to load balance traffic on a routed EtherChannel

D. The router uses NSF to handle RP switchover while allowing neighbor relationships to remain up

**Answer: D**

#### NEW QUESTION 259

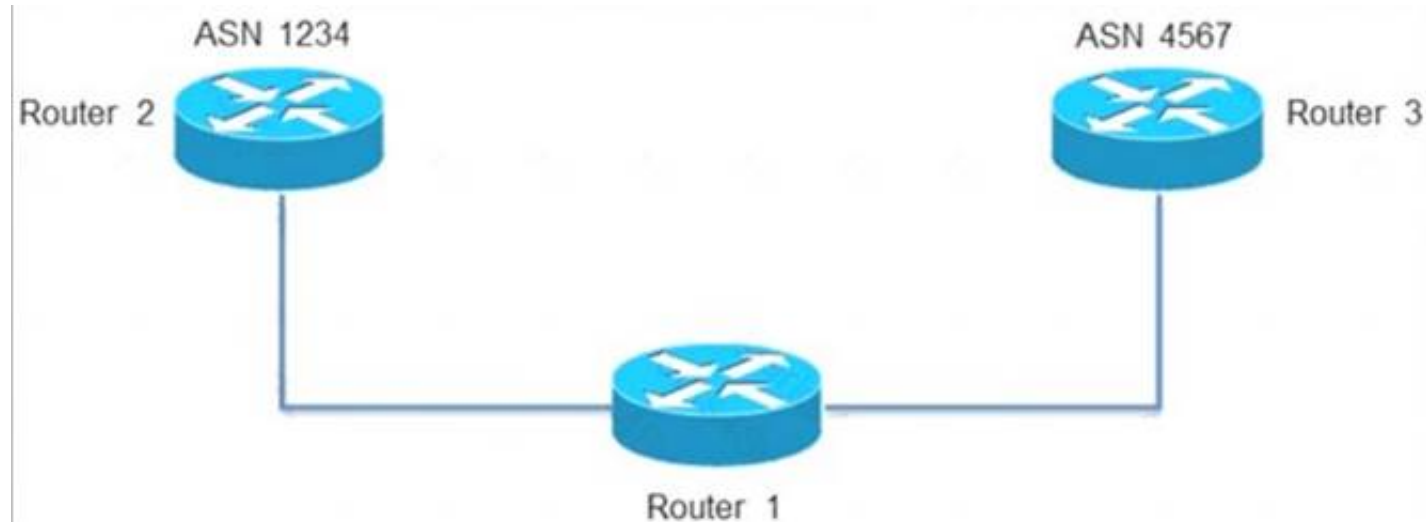
The service provider is serving hosts with two different multicast streams from source X and source Y. Source X is multicast group 224.0.0.0/8, and source Y is multicast group 226.0.0.0/8. Multicast source X should send its stream through bidirectional RP address 10.20.1.1, and multicast source Y should send its stream through RP address 10.20.2.1. Which configuration meets these requirements?

- A. Enable ip pim ssm default on RA and RB.
- B. Add ip pim bidir-enable in global mode on RB.
- C. Permit the source X and source Y IP addresses in the access list on RB.
- D. Set PIM sparse mode with a static RP address of 10.20.2.1 on RA and RC.

**Answer: B**

#### NEW QUESTION 261

Refer to the exhibit.



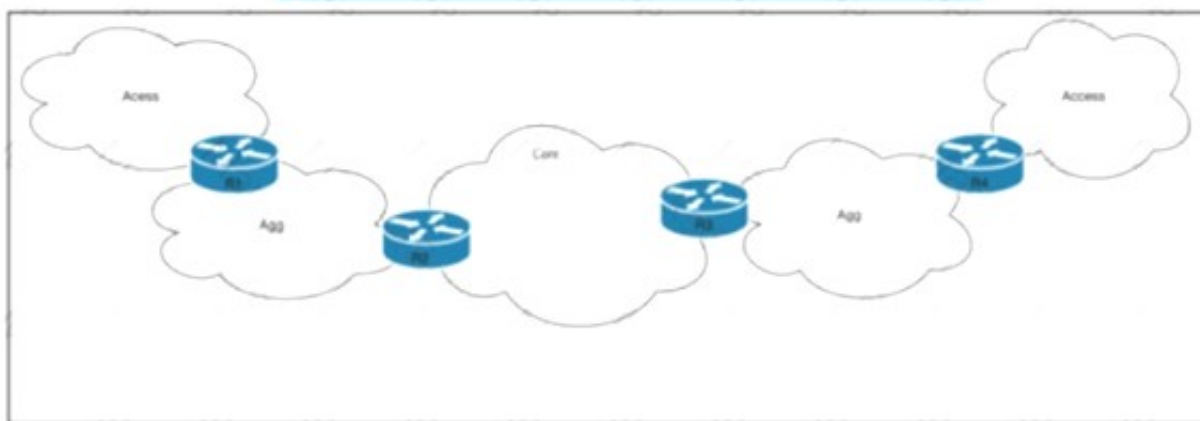
An engineer is configuring path selection on router R1 for two ASNs as shown. Which additional task must the engineer perform on Router 1 so that all outbound traffic utilizes the link between R1 and R3 to reach ASN 4567?

- A. Configure a low weight on the peer to ASN 4567.
- B. Configure a high weight on the peer to ASN 4567.
- C. Configure an AS path prepend on the peer to ASN 4567.
- D. Configure a high med on the peer to ASN 4567.

**Answer: B**

#### NEW QUESTION 264

Refer to the exhibit.



Tier 1 ISP A purchased several Tier 2 ISPs to increase their customer base and provide more regional coverage. ISP A plans to implement MPLS services in the access layer, with scalability up to 100.1 devices in one packet network and service recovery up to 50 ms. The network architect decided to use different independent IGP and LDP domains and interconnect LSPs that are based on RFC 3107. Which two actions must the network engineer perform to meet the requirements? (Choose two.)

- A. Implement BGP PIC core functionality on routers R2 and R3.
- B. Configure three OSPF areas, with Area 0 in the core domain, and Areas 2 and 3 in the aggregation domain.
- C. Implement BGP connectivity between routers R1 and R4 with VPNv4 address family enabled.
- D. Implement BGP inline RR functionality with next-hop-self capabilities on routers R2 and R3.
- E. Implement the IS-IS routing protocol on the access domain.

**Answer: AD**

#### NEW QUESTION 265

Which technology enables the addition of new wavelengths in a fiber-optic network?

- A. IPoDWDM
- B. CWDM
- C. DWDM
- D. ROADM



**Answer: C**

**Explanation:**

Wavelength-division multiplexing (WDM) is a technology which multiplexes a number of optical carrier signals onto a single fiber [1], using different wavelengths of light to carry different signals. This allows for a greater capacity for data transfer and enables the addition of new wavelengths in a fiber-optic network

**NEW QUESTION 268**

A network engineer is implementing BFD configuration changes on a customer's equipment. How is the bfd interval configuration on the interface disconnected?

- A. The status of the interface changes.
- B. The IPv4 or IPv6 address configuration on the interface changes.
- C. It is automatically disconnected when the BFD-configured subinterface is removed.
- D. It is automatically disconnected when the BFD main interface is removed.

**Answer: D**

**NEW QUESTION 270**

Refer to the exhibit.

```
R1
router bgp 65000
router-id 192.168.1.1
no bgp default ipv4-unicast
neighbor 192.168.1.2 remote-as 65001
```

Which task completes the configuration?

- A. Specify the maximum number of prefixes that R1 receives from neighbor 192.168.1.2.
- B. Specify the source interface in the neighbor statement.
- C. Specify the activate neighbor 192.168.1.2 under the IPv4 address family.
- D. Specify the local-as value in the neighbor statement.

**Answer: C**

**NEW QUESTION 272**

A network engineer is configuring RIP as the routing protocol between multiple PEs and CEs. The engineer must avoid advertising the same routes back to their sources. Which action should be performed on the routers to accomplish this task?

- A. Configure a different route distinguisher for each prefix.
- B. Define the site of origin on each interface.
- C. Define VRFs on each device to separate the traffic.
- D. Enable bidirectional forwarding detection on each device.

**Answer: B**

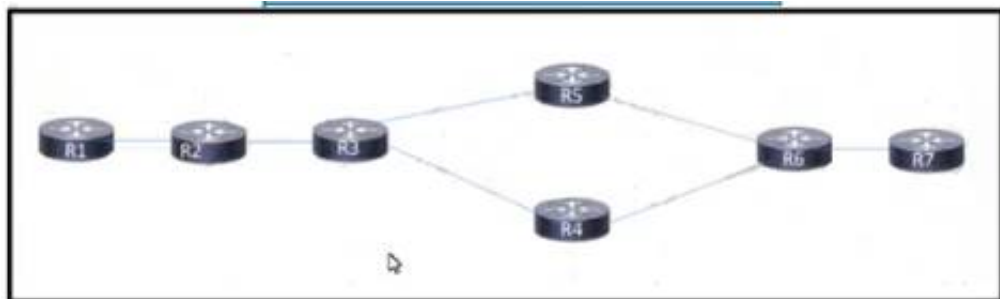
**Explanation:**

Although the SoO is set on BGP address family configuration mode not interface mode, but it is applied to the interface based on this reference. "The configuration of the SoO extended community allows MPLS VPN traffic to be filtered on a per-site basis. The SoO extended community is configured in an inbound BGP route map on the PE router and is applied to the interface."

[https://www.cisco.com/c/en/us/td/docs/switches/lan/catalyst3850/software/release/16-12/configuration\\_guide/m](https://www.cisco.com/c/en/us/td/docs/switches/lan/catalyst3850/software/release/16-12/configuration_guide/m)

**NEW QUESTION 277**

Refer to the exhibit. After a networking team configured this MPLS topology, the supervisor wants to view MPLS labels to verify the path that packets take from router R1 to router R7. The team already issued an ICMP ping to verify connectivity between the devices. Which task must the team perform to allow the supervisor to view the label switch path?



- A. Configure MPLS TE to display the labels in the stack between the head and tail-end routers
- B. Implement MPLS LDP to assign labels to all the routes in the transit path.
- C. Configure MPLS LDP Sync to sync labels from the routing table to the MPLS forwarding table.
- D. Implement MPLS OAM to display the labels for each hop along the path

**Answer: D**

**NEW QUESTION 280**

Refer to the exhibit:

POST `https://router1:8000/api/mo/uni/Descriptions.xml`

What does the REST API command do?

- A. It retrieves the information requested by Descriptions.xml
- B. It removes the information identified by Descriptions.xml
- C. It executes the commands specified in Descriptions.xml
- D. It displays the information identified by Descriptions.xml

**Answer:** C

**NEW QUESTION 282**

.....

## Thank You for Trying Our Product

### We offer two products:

1st - We have Practice Tests Software with Actual Exam Questions

2nd - Questions and Answers in PDF Format

### 350-501 Practice Exam Features:

- \* 350-501 Questions and Answers Updated Frequently
- \* 350-501 Practice Questions Verified by Expert Senior Certified Staff
- \* 350-501 Most Realistic Questions that Guarantee you a Pass on Your First Try
- \* 350-501 Practice Test Questions in Multiple Choice Formats and Updates for 1 Year

**100% Actual & Verified — Instant Download, Please Click**  
**[Order The 350-501 Practice Test Here](#)**