

Microsoft

Exam Questions AZ-800

Administering Windows Server Hybrid Core Infrastructure



NEW QUESTION 1

SIMULATION - (Topic 4)

Task2

You need to ensure that the Azure file share named share1 can sync to on-premises servers.

The required source files are located in a folder named \\dc1.contoso.com\install. You do NOT need to specify the on-premises servers at this time.

- A. Mastered
- B. Not Mastered

Answer: A

Explanation:

One possible solution to ensure that the Azure file share named share1 can sync to on-premises servers is to use Azure File Sync. Azure File Sync allows you to centralize your file shares in Azure Files without giving up the flexibility, performance, and compatibility of an on-premises file server. It does this by transforming your Windows Servers into a quick cache of your Azure file share. You can use any protocol available on Windows Server to access your data locally (including SMB, NFS, and FTPS) and you can have as many caches as you need across the world1.

Here are the steps to configure Azure File Sync for the Azure file share named share1 and the source files located in a folder named \\dc1.contoso.com\install:

? On the Azure portal, create a Storage Sync Service in the same region as your storage account that contains the Azure file share named share1. For more information on how to create a Storage Sync Service, see [How to deploy Azure File Sync](#).

? On the on-premises server that hosts the folder named \\dc1.contoso.com\install, install the Azure File Sync agent. For more information on how to install the Azure File Sync agent, see [Install the Azure File Sync agent](#).

? On the on-premises server, register the server with the Storage Sync Service that you created in the first step. For more information on how to register a server with a Storage Sync Service, see [Register/unregister a server with Storage Sync Service](#).

? On the Azure portal, create a sync group that defines the sync topology for a set of files. In the sync group, select the Azure file share named share1 as the cloud endpoint and the folder named \\dc1.contoso.com\install as the server endpoint.

For more information on how to create a sync group, see [Create a sync group and wait for the initial sync to complete](#). You can monitor the sync progress on the Azure portal or on the on-premises server. For more information on how to monitor sync progress, see [\[Monitor sync progress\]](#).

Once the initial sync is complete, you can add more on-premises servers to the same sync group to sync and cache the content locally. You can also enable cloud tiering to optimize the storage space on the on-premises servers by tiering infrequently accessed or older files to Azure Files.

NEW QUESTION 2

SIMULATION - (Topic 4)

Task 12

You need to create a Group Policy Object (GPO) named GPO1 that only applies to a group named MemberServers.

- A. Mastered
- B. Not Mastered

Answer: A

Explanation:

To create a GPO named GPO1 that only applies to a group named MemberServers, you can follow these steps:

? On a domain controller or a computer that has the Remote Server Administration Tools (RSAT) installed, open Group Policy Management from the Administrative Tools menu or by typing gpmmc.msc in the Run box.

? In the left pane, expand your domain and right-click on Group Policy Objects.

Select New to create a new GPO.

? In the New GPO dialog box, enter GPO1 as the Name of the new GPO and click OK. You can also optionally select a source GPO to copy the settings from.

? Right-click on the new GPO and select Edit to open the Group Policy Management Editor. Here, you can configure the settings that you want to apply to the group

under the Computer Configuration and User Configuration nodes. For more information on how to edit a GPO, see [Edit a Group Policy Object](#).

? Close the Group Policy Management Editor and return to the Group Policy Management console. Right-click on the new GPO and select Scope. Here, you can specify the scope of management for the GPO, such as the links, security filtering, and WMI filtering.

? Under the Security Filtering section, click on Authenticated Users and then click on Remove. This will remove the default permission granted to all authenticated users and computers to apply the GPO.

? Click on Add and then type the name of the group that you want to apply the GPO to, such as MemberServers. Click OK to add the group to the security filter. You can also click on Advanced to browse the list of groups available in the domain.

? Optionally, you can also configure the WMI Filtering section to further filter the GPO based on the Windows Management Instrumentation (WMI) queries. For more information on how to use WMI filtering, see [Filter the scope of a GPO by using WMI filters](#).

? To link the GPO to an organizational unit (OU) or a domain, right-click on the OU or the domain in the left pane and select Link an Existing GPO. Select the GPO that you created, such as GPO1, and click OK. You can also change the order of preference by using the Move Up and Move Down buttons.

? Wait for the changes to replicate to other domain controllers. You can also force the update of the GPO by using the gpupdate /force command on the domain controller or the client computers. For more information on how to update a GPO, see [Update a Group Policy Object](#).

Now, you have created a GPO named GPO1 that only applies to a group named MemberServers. You can verify the GPO application by using the gpresult /r command on a member server and checking the Applied Group Policy Objects entry. You can also use the Group Policy Results wizard in the Group Policy Management console to generate a report of the GPO application for a specific computer or user. For more information on how to use the Group Policy Results wizard, see [Use the Group Policy Results Wizard](#).

NEW QUESTION 3

SIMULATION - (Topic 4)

Task 10

You need to configure Hyper-V to ensure that running virtual machines can be moved between SRV1 and SRV2 without downtime.

You do NOT need to move any virtual machines at this time.

- A. Mastered
- B. Not Mastered

Answer: A

Explanation:

One possible solution to configure Hyper-V to ensure that running virtual machines can be moved between SRV1 and SRV2 without downtime is to use Live Migration. Live Migration is a feature of Hyper-V that allows you to move a running virtual machine from one host to another without any noticeable interruption of service. To set up Live Migration between SRV1 and SRV2, you need to perform the following steps:

? On both SRV1 and SRV2, open Hyper-V Manager from the Administrative

Tools menu or by typing virtmgmt.msc in the Run box.

? In the left pane, right-click on the name of the server and select Hyper-V Settings.

? In the Hyper-V Settings dialog box, select Live Migrations in the navigation pane.

? Check the box Enable incoming and outgoing live migrations.

? Under Authentication protocol, select the method that you want to use to authenticate the live migration traffic between the servers. You can choose either Kerberos or CredSSP. Kerberos does not require you to sign in to the source server before starting a live migration, but it requires you to configure constrained delegation on the domain controller. CredSSP does not require you to configure constrained delegation, but it requires you to sign in to the source server through a local console session, a Remote Desktop session, or a remote Windows PowerShell session. For more information on how to configure constrained delegation, see [Configure constrained delegation](#).

? Under Performance options, select the option that best suits your network configuration and performance requirements. You can choose either TCP/IP or Compression or SMB. TCP/IP uses a single TCP connection for the live migration traffic. Compression uses multiple TCP connections and compresses the live migration traffic to reduce the migration time and network bandwidth usage. SMB uses the Server Message Block (SMB) 3.0 protocol and can leverage SMB features such as SMB Multichannel and SMB Direct. For more information on how to choose the best performance option, see [Choose a live migration performance option](#).

? Under Advanced Features, you can optionally enable the Use any available network for live migration option, which allows Hyper-V to use any available network adapter on the source and destination servers for live migration. If you do not enable this option, you need to specify one or more network adapters to be used for live migration by clicking on the Add button and selecting the network adapter from the list. You can also change the order of preference by using the Move Up and Move Down buttons.

? Click OK to apply the settings.

Now, you have configured Hyper-V to enable live migration between SRV1 and SRV2. You can use Hyper-V Manager or Windows PowerShell to initiate a live migration of a running virtual machine from one server to another.

NEW QUESTION 4

SIMULATION - (Topic 4)

Task 7

You need to monitor the security configuration of DC1 by using Microsoft Defender for Cloud.

The required source files are located in a folder named \\dc1.contoso.com\install.

- A. Mastered
- B. Not Mastered

Answer: A

Explanation:

One possible solution to monitor the security configuration of DC1 by using Microsoft Defender for Cloud is to use the Guest Configuration feature. Guest Configuration is a service that audits settings inside Linux and Windows virtual machines (VMs) to assess their compliance with your organization's security policies. You can use Guest Configuration to monitor the security baseline settings for Windows Server in the Microsoft Defender for Cloud portal by following these steps:

? On DC1, open a web browser and go to the folder named \\dc1.contoso.com\install.

Download the Guest Configuration extension file (GuestConfiguration.msi) and save it to a local folder, such as C:\Temp.

? Run the Guest Configuration extension file and follow the installation wizard. You can choose to install the extension for all users or only for the current user. For more information on how to install the Guest Configuration extension, see [Install the Guest Configuration extension](#).

? After the installation is complete, sign in to the Microsoft Defender for Cloud portal (2).

? In the left pane, select Security Center and then Recommendations.

? In the recommendations list, find and select Vulnerabilities in security configuration on your Windows machines should be remediated (powered by Guest Configuration).

? In the Remediate Security Configurations page, you can see the compliance status of your Windows VMs, including DC1, based on the Azure Compute Benchmark.

The Azure Compute Benchmark is a set of rules that define the desired configuration state of your VMs. You can also see the number of failed, passed, and skipped rules for each VM. For more information on the Azure Compute Benchmark, see [Microsoft cloud security benchmark: Azure compute benchmark is now available](#).

? To view the details of the security configuration of DC1, click on the VM name and then select View details. You can see the list of rules that apply to DC1 and their compliance status. You can also see the severity, description, and remediation steps for each rule. For example, you can see if DC1 has the latest security updates installed, if the firewall is enabled, if the password policy is enforced, and so on.

? To monitor the security configuration of DC1 over time, you can use the Compliance over time chart, which shows the trend of compliance status for DC1 in the past 30 days. You can also use the Compliance breakdown chart, which shows the distribution of compliance status for DC1 by rule severity.

By using Guest Configuration, you can monitor the security configuration of DC1 by using Microsoft Defender for Cloud and ensure that it meets your organization's security standards. You can also use Guest Configuration to monitor the security configuration of other Windows and Linux VMs in your Azure environment.

NEW QUESTION 5

SIMULATION - (Topic 4)

Task 3

You need to configure SRV1 as a DNS server. SRV1 must be able resolve names from the contoso.com domain by using DC1. All other names must be resolved by using the root hint servers.

- A. Mastered
- B. Not Mastered

Answer: A

Explanation:

One possible solution to configure SRV1 as a DNS server that can resolve names from the contoso.com domain by using DC1 and all other names by using the root hint servers is to use conditional forwarding. Conditional forwarding allows a DNS server to forward queries for a specific domain name to another DNS server,

while using the normal forwarding or root hint servers for other queries. Here are the steps to configure conditional forwarding on SRV1:

? On SRV1, open DNS Manager from the Administrative Tools menu or by typing dnsmgmt.msc in the Run box.

? In the left pane, right-click on Conditional Forwarders and select New Conditional Forwarder.

? In the New Conditional Forwarder dialog box, enter contoso.com as the DNS Domain name.

? In the IP addresses of the master servers box, enter the IP address of DC1, which is the DNS server for the contoso.com domain. You can also click on Resolve to verify the name resolution of DC1.

? Optionally, you can check the box Store this conditional forwarder in Active Directory, and replicate it as follows if you want to store and replicate the conditional forwarder in AD DS. You can also select the replication scope from the drop-down list.

? Click OK to create the conditional forwarder.

Now, SRV1 will forward any queries for the contoso.com domain to DC1, and use the root hint servers for any other queries. You can test the name resolution by using

the nslookup command on SRV1 or another computer that uses SRV1 as its DNS server. For example, you can run the following commands:

nslookup www.contoso.com nslookup www.microsoft.com

The first command should return the IP address of www.contoso.com from DC1, and the second command should return the IP address of www.microsoft.com from a root hint server.

NEW QUESTION 6

- (Topic 3)

Your network contains an Active Directory Domain Services (AD DS) domain named contoso.com. The domain contains a DNS server named Server1. Server1 hosts a DNS zone named fabrikam.com that was signed by DNSSEC.

You need to ensure that all the member servers in the domain perform DNSSEC validation for the fabrikam.com namespace.

What should you do?

- A. On Served, run the Add-DnsServerTrustAnchor cmdlet.
- B. On each member server, run the Add-DnsServerTrustAnchor cmdlet.
- C. From a Group Policy Object (GPO). add a rule to the Name Resolution Policy Table (NRPT).
- D. From a Group Policy Object (GPO). modify the Network List Manager policies.

Answer: C

NEW QUESTION 7

HOTSPOT - (Topic 3)

Your network contains an Active Directory Domain Services (AD DS) forest named contoso.com. The forest contains a child domain named east.contoso.com and the servers shown in the following table.

Name	Domain	Description
DC1	contoso.com	Has the schema master, infrastructure master, and domain naming master roles
DC2	east.contoso.com	Has the PDC emulator and RID master roles and is a global catalog server
Server1	contoso.com	Has the File Server, DFS Namespaces, and DFS Replication server roles

You need to create a folder for the Central Store to manage Group Policy template files for the entire forest.

What should you name the folder, and on which server should you create the folder? To answer, select the appropriate options in the answer area.

NOTE: Each correct selection is worth one point.

Answer Area

Name: These are the selections for Name:

- CentralDefinitions
- PolicyDefinitions**
- TemplateDefinitions

Server:

- DC1 only
- DC2 only
- Server1 only**
- DC1 and DC2 only
- DC1, DC2, and Server1

- A. Mastered
- B. Not Mastered

Answer: A

Explanation:

Answer Area

Name: These are the selections for Name:

- CentralDefinitions
- PolicyDefinitions**
- TemplateDefinitions

Server:

- DC1 only
- DC2 only
- Server1 only**
- DC1 and DC2 only
- DC1, DC2, and Server1

NEW QUESTION 8

HOTSPOT - (Topic 3)

Your on-premises network contains an Active Directory Domain Services (AD DS) domain.

The domain contains the servers shown in the following table.

The domain controllers do NOT have internet connectivity.

You plan to implement Azure AD Password Protection for the domain.

You need to deploy Azure AD Password Protection agents. The solution must meet the following requirements:

- All Azure AD Password Protection policies must be enforced.
- Agent updates must be applied automatically.
- Administrative effort must be minimized.

What should you do? To answer select the appropriate options in the answer area. NOTE: Each correct selection is worth one point.

Answer Area

Install the Azure AD Password Protection agent on: DC1 and DC2 only

Install the Azure AD Password Protection Proxy on: Server1

- A. Mastered
B. Not Mastered

Answer: A

Explanation:

Answer Area

Install the Azure AD Password Protection agent on: DC1 and DC2 only

Install the Azure AD Password Protection Proxy on: Server1

NEW QUESTION 9

HOTSPOT - (Topic 3)

You have a Windows Server container host named Server1.

You start the containers on Server1 as shown in the following table.

Name	Image	Uses Hyper-V isolation	Process running on container
Container1	microsoft/iis	No	ProcessA
Container2	microsoft/iis	No	ProcessB
Container3	microsoft/iis	Yes	ProcessC
Container4	microsoft/iis	Yes	ProcessD

You need to validate the status of ProcessA and ProcessC.

Where can you verify that ProcessA and ProcessC are in a running state? To answer, select the appropriate options in the answer area.

NOTE: Each correct selection is worth one point.

Answer Area

ProcessA: All the containers and Server1

ProcessC: Container3 and Server1 only

- A. Mastered
B. Not Mastered

Answer: A

Explanation:

Answer Area

ProcessA: All the containers and Server1

ProcessC: Container3 and Server1 only

NEW QUESTION 10

- (Topic 3)

Your network contains an Active Directory Domain Services (AD DS) domain named contoso.com. The domain contains two servers named Server1 and Server2. Server1 contains a disk named Disk2. Disk2 contains a folder named UserData. UserData is shared to the Domain Users group. Disk2 is configured for deduplication. Server1 is protected by using Azure Backup.

Server1 fails.

You connect Disk2 to Server2.

You need to ensure that you can access all the files on Disk2 as quickly as possible. What should you do?

- A. Create a storage pool.
- B. Restore files from Azure Backup.
- C. Install the File Server Resource Manager server role.
- D. Install the Data Deduplication server role.

Answer: C

Explanation:

Reference:

<https://docs.microsoft.com/en-us/windows-server/storage/data-deduplication/overview>

NEW QUESTION 10

- (Topic 3)

You have a server that runs Windows Server and contains a shared folder named UserData.

You need to limit the amount of storage space that each user can consume in UserData. What should you use?

- A. Storage Spaces
- B. Work Folders
- C. Distributed File System (DFS) Namespaces
- D. File Server Resource Manager (FSRM)

Answer: D

Explanation:

Reference:

<https://docs.microsoft.com/en-us/windows-server/storage/fsrm/fsrm-overview>

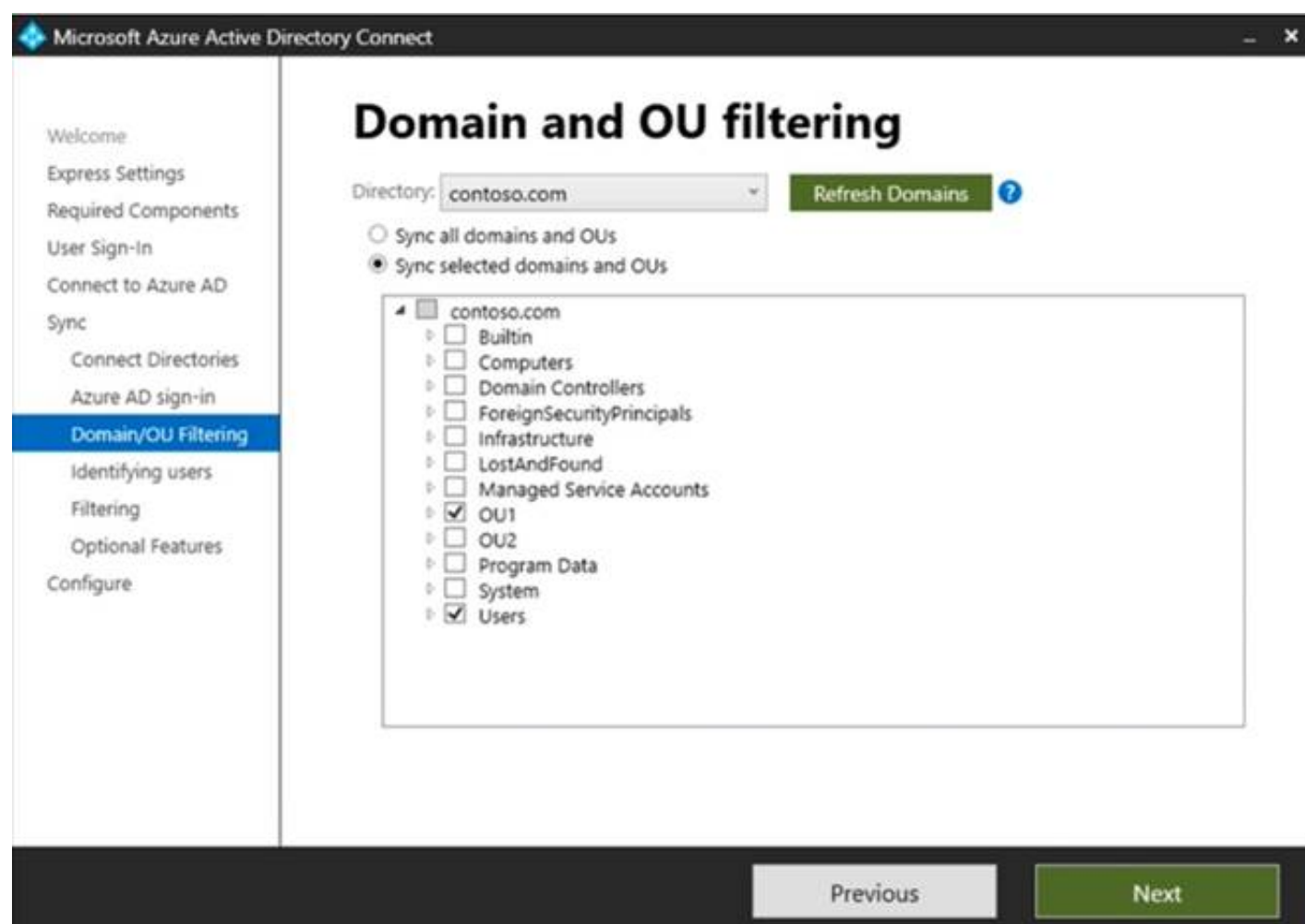
NEW QUESTION 13

HOTSPOT - (Topic 3)

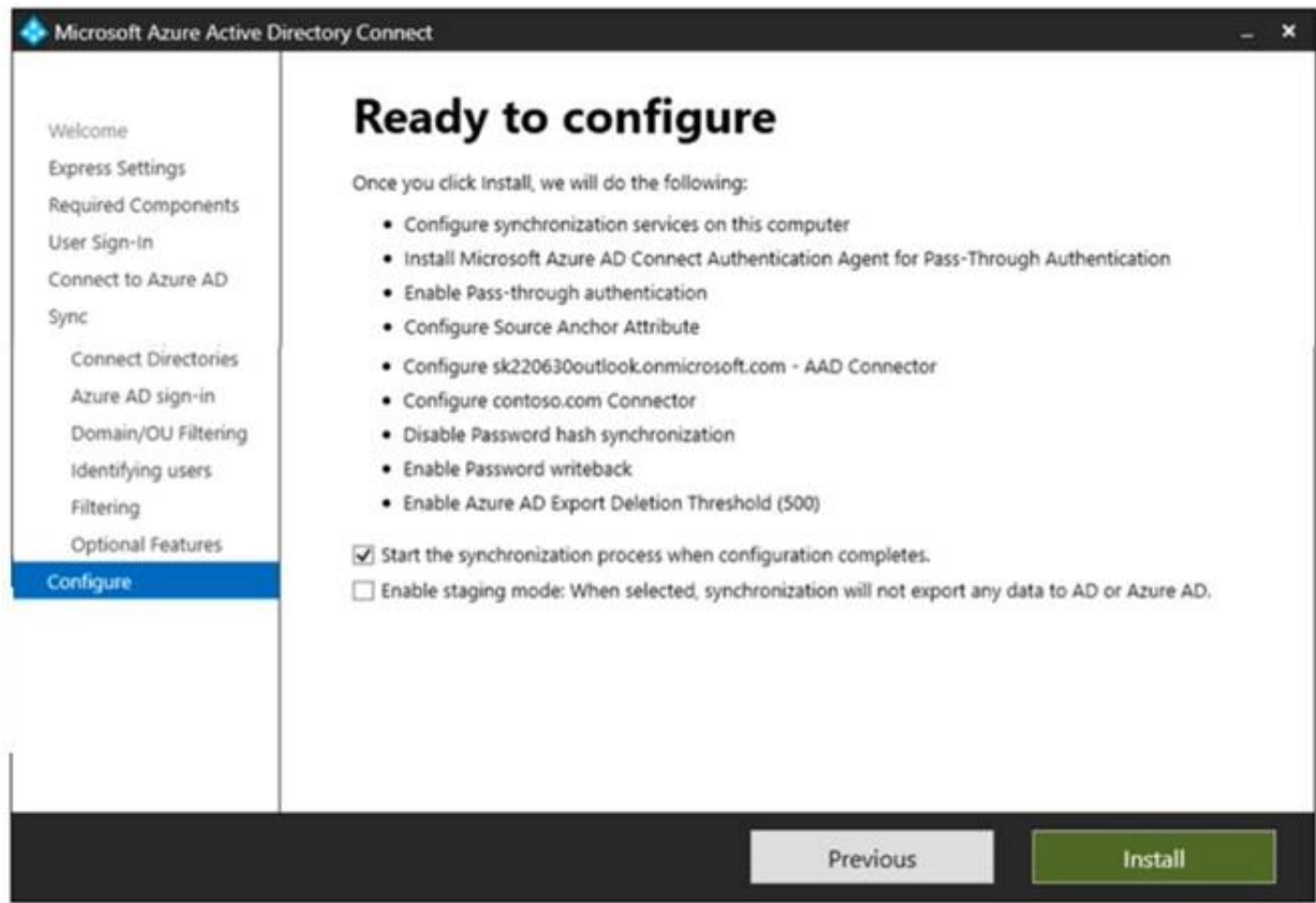
Your network contains an on-premises Active Directory Domain Services (AD DS) domain named contoso.com that syncs with an Azure AD tenant. The tenant contains a group named Group1 and the users shown in the following table.

Name	In organizational unit (OU)
User1	OU1
User2	OU2

Domain/OU filtering in Azure AD Connect is configured as shown in the Filtering exhibit. (Click the Filtering tab.)



You review the Azure AD Connect configurations as shown in the Configure exhibit. (Click the Configure tab.)



For each of the following statements, select Yes if the statement is true. Otherwise, select No. NOTE: Each correct selection is worth one point.

Answer Area

Statements	Yes	No
User1 can use self-service password reset (SSPR) to reset his password.	<input type="radio"/>	<input type="radio"/>
If User1 connects to Microsoft Exchange Online, an on-premises domain controller provides authentication.	<input type="radio"/>	<input type="radio"/>
You can add User2 to Group1 as a member.	<input type="radio"/>	<input type="radio"/>

- A. Mastered
- B. Not Mastered

Answer: A

Explanation:

Answer Area

Statements	Yes	No
User1 can use self-service password reset (SSPR) to reset his password.	<input type="radio"/>	<input checked="" type="radio"/>
If User1 connects to Microsoft Exchange Online, an on-premises domain controller provides authentication.	<input type="radio"/>	<input checked="" type="radio"/>
You can add User2 to Group1 as a member.	<input type="radio"/>	<input checked="" type="radio"/>

NEW QUESTION 14

- (Topic 3)

You have an Azure virtual machine named VM1 that runs Windows Server and has the following configurations:

? Size: D2s_v4

? Operating system disk: 127-GiB standard SSD

? Data disk 128-GiB standard SSD

? Virtual machine generation: Gen 2

You plan to perform the following changes to VM1:

? Change the virtual machine size to D4s_v4.

? Detach the data disk.

? Add a new standard SSD.

Which changes require downtime for VM1?

- A. Detaching the data disk only and adding a new standard SSD.
- B. Detaching the data disk only.
- C. Changing the virtual machine size only.
- D. Adding a new standard SSD only.

Answer: C

Explanation:

Data disks can be added and detached without requiring downtime. Changing the VM size requires the VM to be restarted.

NEW QUESTION 18

HOTSPOT - (Topic 3)

You have an Azure subscription that contains a virtual network named VNet1. Vnet1 contains three subnets named Subnet1, Subnet2, and Subnet3. You deploy a virtual machine that has the following settings:

- Name: VM1
- Subnet: Subnet2
- Network interface name: NIC1
- Operating system: Windows Server 2022

You need to ensure that VM1 can route traffic between Subnet1 and Subnet3. The solution must minimize administrative effort.

What should you do? To answer, select the appropriate options in the answer area. NOTE: Each correct selection is worth one point.

Answer Area

From the Azure portal:	<div>Associate a routing table with Subnet2.</div> <div>Associate a routing table with Subnet2.</div> <div>Attach two additional interfaces to VM1.</div> <div>Enable IP forwarding for NIC1.</div>
On VM1:	<div>Install and configure a network controller.</div> <div>Install and configure a network controller.</div> <div>Install and configure Routing and Remote Access.</div> <div>Run the route add command.</div>

- A. Mastered
- B. Not Mastered

Answer: A

Explanation:

Answer Area

From the Azure portal:	<div>Associate a routing table with Subnet2.</div> <div>Associate a routing table with Subnet2.</div> <div>Attach two additional interfaces to VM1.</div> <div>Enable IP forwarding for NIC1.</div>
On VM1:	<div>Install and configure a network controller.</div> <div>Install and configure a network controller.</div> <div>Install and configure Routing and Remote Access.</div> <div>Run the route add command.</div>

NEW QUESTION 19

- (Topic 3)

You have a Windows Server container host named Server 1 and a container image named Image1.

You need to start a container from image1. The solution must run the container on a Hyper- V virtual machine.

Which parameter should you specify when you run the docker run command?

- A. --expose
- B. --privileged
- C. --runtime
- D. --entrypoint
- E. --isolation

Answer: D

Explanation:

Reference:

<https://docs.microsoft.com/en-us/virtualization/windowscontainers/manage-containers/hyperv-container>

NEW QUESTION 24

- (Topic 3)

Your network contains an on-premises Active Directory Domain Services (AD DS) domain named contoso.com. The domain contains three servers that run Windows Server and have the Hyper-V server role installed. Each server has a Switch Embedded Teaming (SET) team.

You need to verify that Remote Direct Memory Access (RDMA) and required Windows Server settings are configured properly on each server to support a failover cluster.

What should you use?

- A. the validate-DCB cmdlet
- B. Server Manager
- C. the Get-NetAdapter cmdlet
- D. Failover Cluster Manager

Answer: A

NEW QUESTION 27

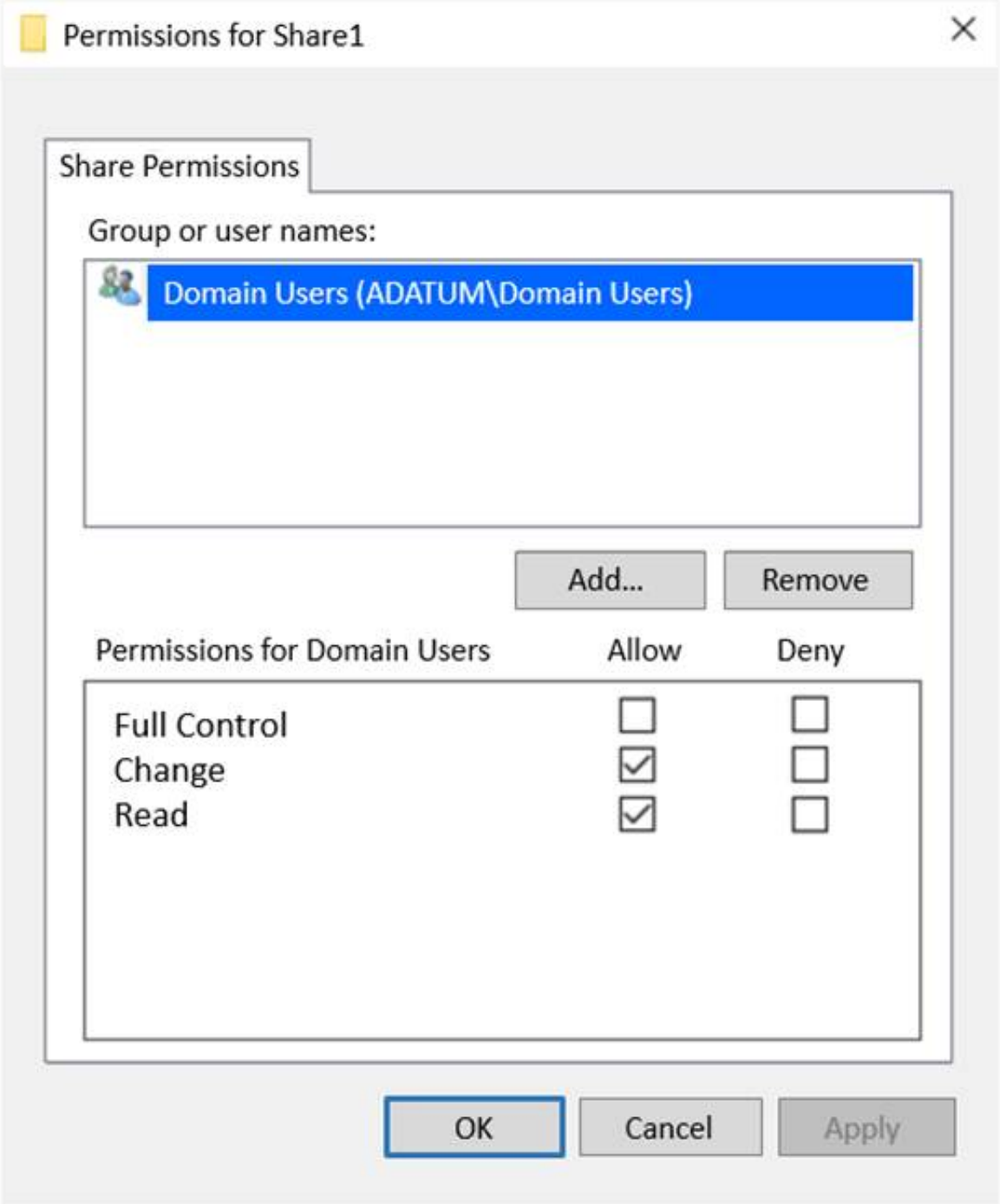
HOTSPOT - (Topic 3)

Your network contains an Active Directory Domain Services (AD DS) domain named adatum.com. The domain contains a file server named Server1 and three users named User1, User2, and User3.

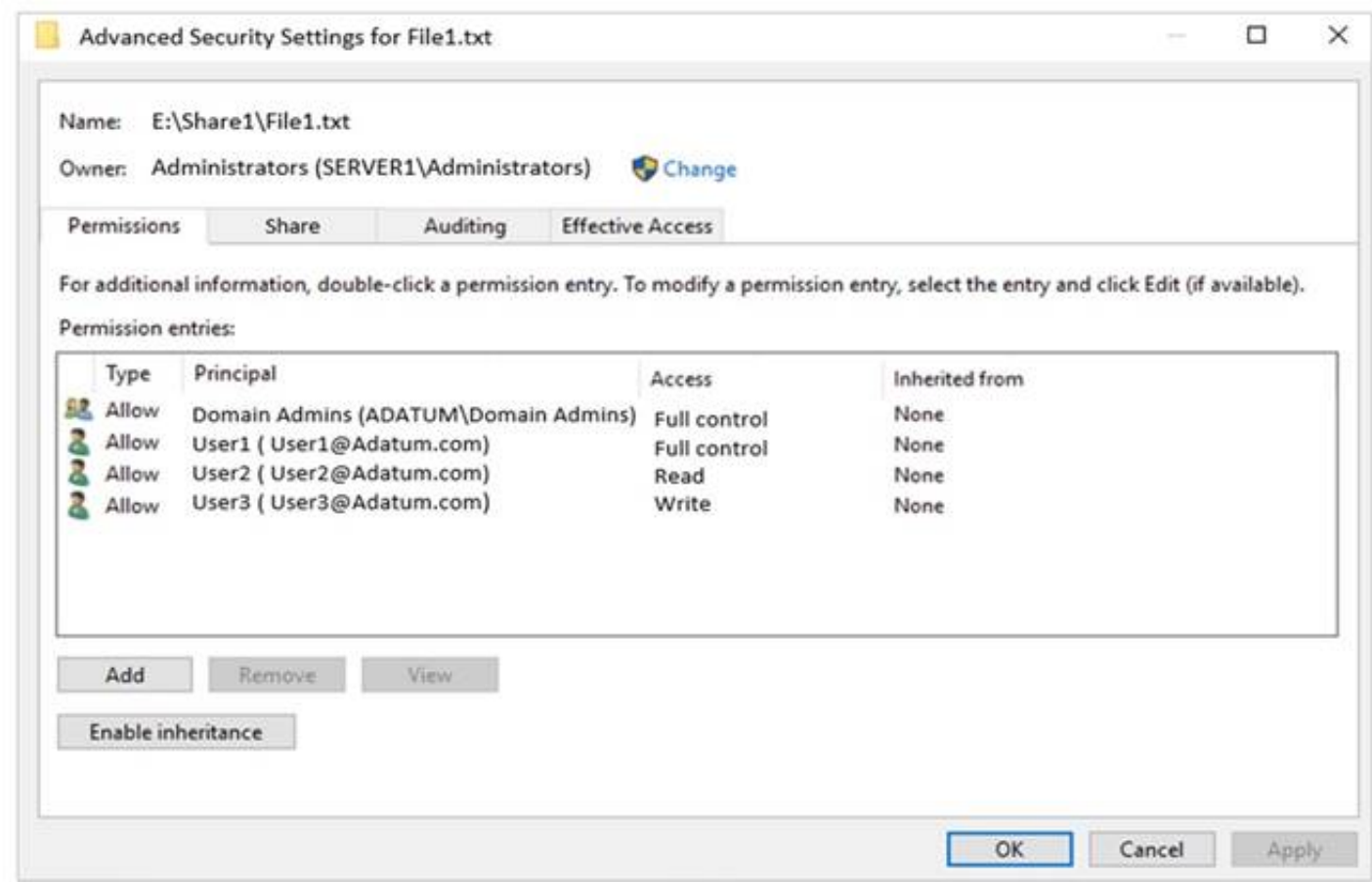
Server1 contains a shared folder named Share1 that has the following configurations:


```
ShareState           : Online
AvailabilityType     : NonClustered
FolderEnumerationMode : AccessBased
CachingMode         : Manual
LeasingMode         : Full
SmbInstance         : Default
CompressData        : False
ContinuouslyAvailable : False
EncryptData         : False
Name                : Share1
Path                : E:\Share1
ShadowCopy          : False
```

The share permissions for Share1 are configured as shown in the Share Permissions exhibit.



Share1 contains a file named File1.bxt. The share settings for File1.txt are configured as shown in the File Permissions exhibit.



For each of the following statements, select Yes if the statement is true. Otherwise, select No.
NOTE: Each correct selection is worth one point.

Statements	Yes	No
When User1 connects to \\Server1.adatum.com\Share1, the user can take ownership of File1.txt.	<input type="checkbox"/>	<input type="checkbox"/>
When User2 connects to \\Server1.adatum.com\Share1, File1.txt is visible.	<input type="checkbox"/>	<input type="checkbox"/>
When User3 connects to \\Server1.adatum.com\Share1, File1.txt is visible.	<input type="checkbox"/>	<input type="checkbox"/>

- A. Mastered
- B. Not Mastered

Answer: A

Explanation:

Statements	Yes	No
When User1 connects to \\Server1.adatum.com\Share1, the user can take ownership of File1.txt.	<input type="checkbox"/>	<input checked="" type="checkbox"/>
When User2 connects to \\Server1.adatum.com\Share1, File1.txt is visible.	<input checked="" type="checkbox"/>	<input type="checkbox"/>
When User3 connects to \\Server1.adatum.com\Share1, File1.txt is visible.	<input checked="" type="checkbox"/>	<input type="checkbox"/>

NEW QUESTION 28

- (Topic 3)
You have an Azure virtual machine named VM1 that runs Windows Server. You have an Azure subscription that has Microsoft Defender for Cloud enabled. You need to ensure that you can use the Azure Policy guest configuration feature to manage VM1. What should you do?

- A. Add the PowerShell Desired State Configuration (DSC) extension to VM1.
- B. Configure VM1 to use a user-assigned managed identity.
- C. Configure VM1 to use a system-assigned managed identity.
- D. Add the Custom Script Extension to VM1.

Answer: C

Explanation:

Reference:
<https://docs.microsoft.com/en-us/azure/virtual-machines/extensions/guest-configuration>

NEW QUESTION 33

HOTSPOT - (Topic 3)

Your company has offices in Boston and Montreal. The offices are connected by using a 10-Mbps WAN link that is often saturated The office in Boston contains the following:

- An Active Directory Domain Services (AD DS) domain controller named DC1.
- A server named Server1 that runs Windows Server and has the File Server role installed The office in Montreal contains 20 client computers that run Windows 10 Montreal does NOT have any servers.

The company plans to deploy a new line of business (LOB) application to all the client computers. The installation source files for the application are in \\Server\Apps.

Answer Area

On Server1:

Enable BranchCache in hosted cache mode.
 Enable BranchCache in Distributed Cache mode.
 Install the BranchCache for network files role service.

On the client computers:

Enable BranchCache in hosted cache mode.
 Enable BranchCache in Distributed Cache mode.
 Install the BranchCache for network files role service.

- A. Mastered
- B. Not Mastered

Answer: A

Explanation:

Answer Area

On Server1:

Enable BranchCache in hosted cache mode.
 Enable BranchCache in Distributed Cache mode.
 Install the BranchCache for network files role service.

On the client computers:

Enable BranchCache in hosted cache mode.
 Enable BranchCache in Distributed Cache mode.
 Install the BranchCache for network files role service.

NEW QUESTION 36

- (Topic 3)

Your network contains a single-domain Active Directory Domain Services (AD DS) forest named conto.com. The forest contains the servers shown in the following exhibit table.

Name	Description
DC1	Domain controller
Server1	Member server

You plan to install a line-of-business (LOB) application on Server1. The application will install a custom windows services. A new corporate security policy states that all custom Windows services must run under the context of a group managed service account (gMSA). You deploy a root key. You need to create, configure, and install the gMSA that will be used by the new application. Which two actions should you perform? Each correct answer presents part of the solution. NOTE: Each correct selection is worth one point.

- A. On Server1, run the install-ADServiceAccount cmdlet.
- B. On DC1, run the New-ADServiceAccount cmdlet.
- C. On DC1, run the Set_ADComputer cmdlet.
- D. ON DC1, run the Install-ADServiceAccount cmdlet.
- E. On Server1, run the Get-ADServiceAccount cmdlet.

Answer: AB

NEW QUESTION 41

HOTSPOT - (Topic 3)

You have an onpremises DNS server named Server1 that runs Windows Server. Server 1 hosts a DNS zone named fabrikam.com You have an Azure subscription that contains the resources shown in the following table.

Name	Type	Description
Vnet1	Virtual network	Connects to the on-premises network by using a Site-to-Site VPN
VM1	Virtual machine	Runs Windows Server and has the DNS Server role installed
contoso.com	Private DNS zone	Linked to Vnet1
contoso.com	Public DNS zone	Contains the DNS records of all the platform as a service (PaaS) resources

Answer Area

On Vnet1:

Configure VM1 to forward requests for the contoso.com zone to the public DNS zone.
Configure Vnet1 to use a custom DNS server that is set to the Azure-provided DNS at 168.63.129.16.
Configure VM1 to forward requests for the contoso.com zone to the Azure-provided DNS at 168.63.129.16.

On the on-premises network:

Configure forwarding for the contoso.com zone to VM1.
Configure forwarding for the contoso.com zone to the public DNS zone.
Configure forwarding for the contoso.com zone to the Azure-provided DNS at 168.63.129.16.

- A. Mastered
B. Not Mastered

Answer: A

Explanation:

Answer Area

On Vnet1:

Configure VM1 to forward requests for the contoso.com zone to the public DNS zone.
Configure Vnet1 to use a custom DNS server that is set to the Azure-provided DNS at 168.63.129.16.
Configure VM1 to forward requests for the contoso.com zone to the Azure-provided DNS at 168.63.129.16.

On the on-premises network:

Configure forwarding for the contoso.com zone to VM1.
Configure forwarding for the contoso.com zone to the public DNS zone.
Configure forwarding for the contoso.com zone to the Azure-provided DNS at 168.63.129.16.

NEW QUESTION 45

- (Topic 3)

You have an Active Directory domain that contains a file server named Server1. Server1 runs Windows Server and includes the file shares shown in the following table.

Share Name	Path
Users	D:\Users
Accounts	D:\Dept\Accounts
Marketing	D:\Dept\Marketing
CustomerService	D:\Dept\CustomerService

When users login to the network they receive the following network drive mappings.

- H: maps to Wserver1\users\%UserName%
- G: maps to \\server1\%Department%

You need to limit the amount of space consumed by user's on Server!. The solution must meet the following requirements:

- Prevent users using more than 5GB of space on their H: drive
- Prevent Accounts department users from using more than 10GB of space on the G: drive
- Prevent Marketing department users from using more than 15GB of space on the G: drive
- Prevent Customer Service department users from using more than 2GB of space on the G: drive
- Minimize administrative effort What should you use?

- A. File Server Resource Manager (FSRM) quotas
B. Storage tiering
C. NTFS Disk quotas
D. Group Policy Preferences

Answer: A

NEW QUESTION 46

DRAG DROP - (Topic 3)

Your network contains two Active Directory Domain Services (AD DS) forests named contoso.com and fabrikam.com. Contoso.com contains three child domains named amer.contoso.com, apac.contoso.com, and emea.contoso.com. Fabrikam.com contains a child domain named apac.fabrikam.com. A bidirectional forest trust exists between contoso.com and fabrikam.com.

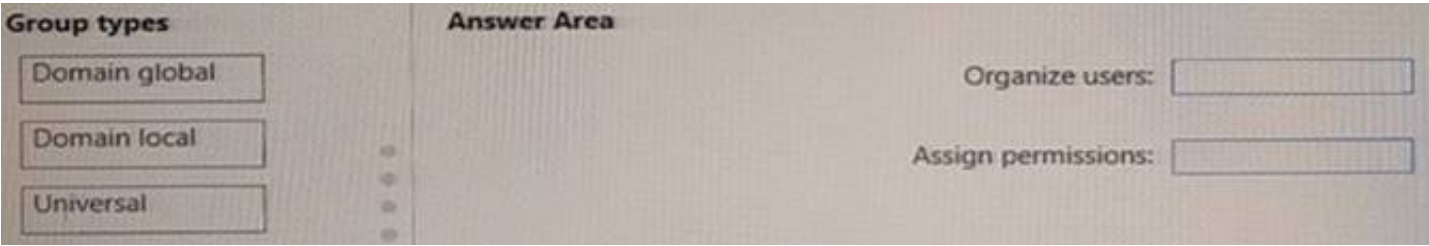
You need to provide users in the contoso.com forest with access to the resources in the fabrikam.com forest. The solution must meet the following requirements:

- Users in contoso.com must only be added directly to groups in the contoso.com forest.
- Permissions to access the resources in fabrikam.com must only be granted directly to groups in the fabrikam.com forest.
- The number of groups must be minimized.

Which type of groups should you use to organize the users and to assign permissions? To answer, drag the appropriate group types to the correct requirements.

Each group type may be used once, more than once, or not at all. You may need to drag the split bar between panes or scroll to view content.

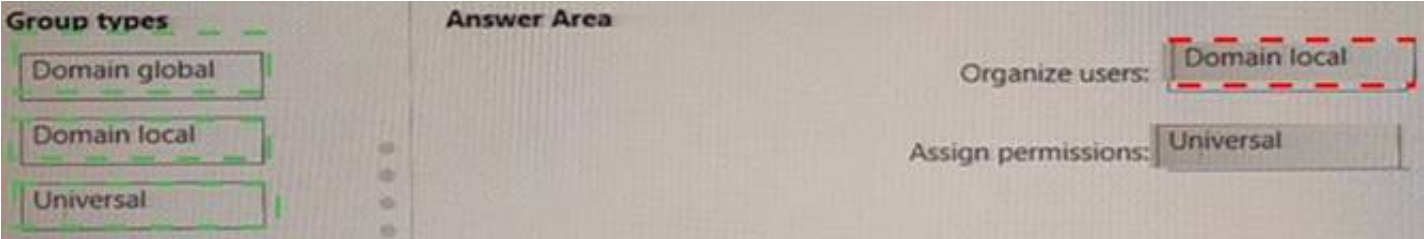
NOTE: Each correct selection is worth one point.



- A. Mastered
- B. Not Mastered

Answer: A

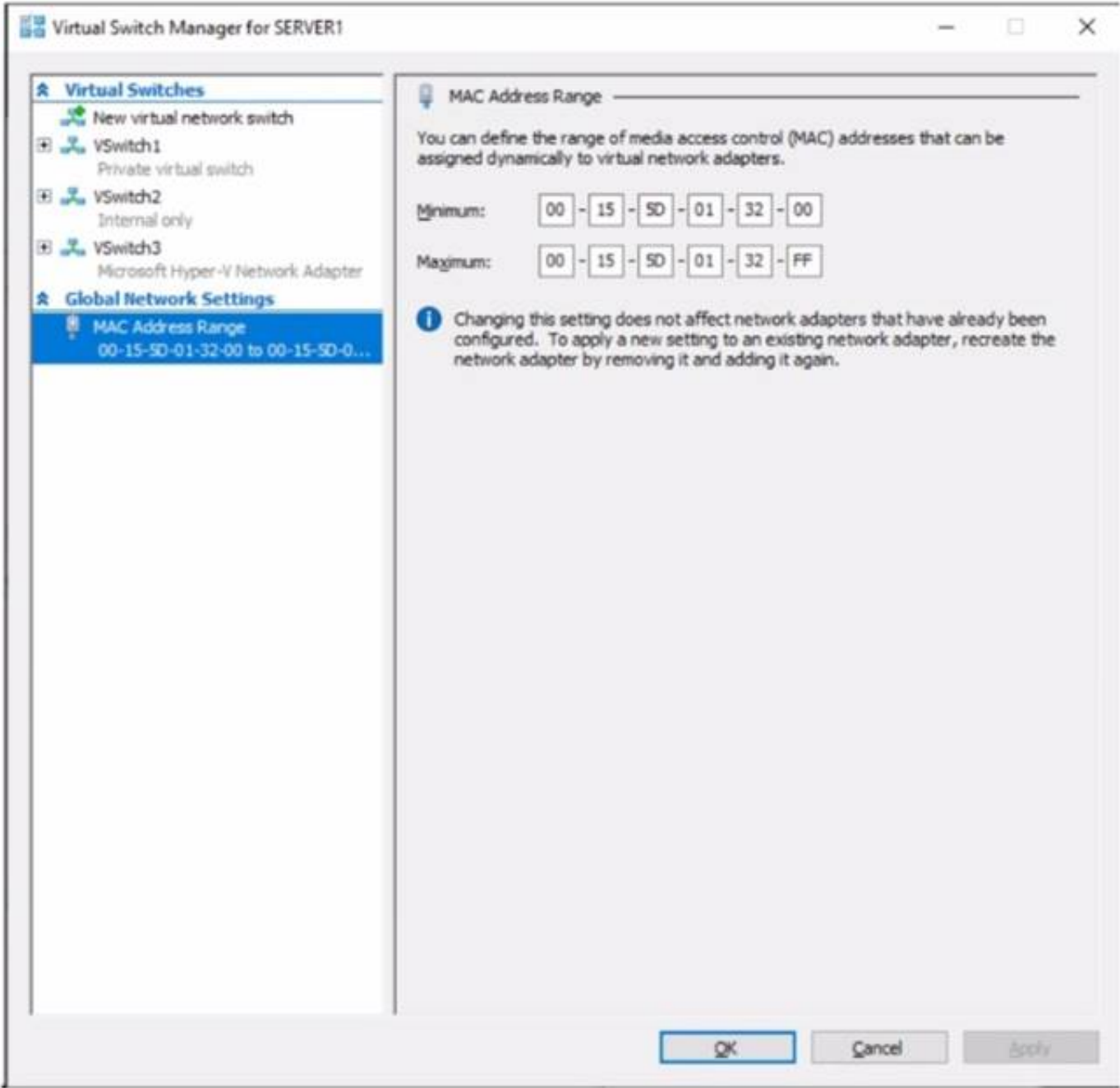
Explanation:



NEW QUESTION 51

HOTSPOT - (Topic 3)

You have a server named Server1 that runs Windows Server. Server1 has a single network interface and the Hyper-V virtual switches shown in the following exhibit.



Use the drop-down menus to select the answer choice that completes each statement based on the information presented in the graphic.
NOTE: Each correct selection is worth one point.

Answer Area

On Server1, you can create additional [answer choice].

private and internal virtual switches only

internal virtual switches only

private virtual switches only

private and internal virtual switches only

private, internal, and external virtual switches

Server1 can access network shares on virtual machines that are connected to [answer choice].

VSwitch1, VSwitch2, or VSwitch3

VSwitch2 only

VSwitch3 only

VSwitch1 or VSwitch2 only

VSwitch2 or VSwitch3 only

VSwitch1, VSwitch2, or VSwitch3

- A. Mastered
- B. Not Mastered

Answer: A

Explanation:

Answer Area

On Server1, you can create additional [answer choice].

private and internal virtual switches only

internal virtual switches only

private virtual switches only

private and internal virtual switches only

private, internal, and external virtual switches

Server1 can access network shares on virtual machines that are connected to [answer choice].

VSwitch1, VSwitch2, or VSwitch3

VSwitch2 only

VSwitch3 only

VSwitch1 or VSwitch2 only

VSwitch2 or VSwitch3 only

VSwitch1, VSwitch2, or VSwitch3

NEW QUESTION 52

HOTSPOT - (Topic 3)

You plan to deploy an Azure virtual machine that will run Windows Server. You need to ensure that an Azure Active Directory (Azure AD) user named user1@contoso.com can connect to the virtual machine by using the Azure Serial Console. What should you do? To answer, select the appropriate options in the answer area. NOTE: Each correct selection is worth one point.

Answer Area

Configure on the Azure virtual machine:

Boot diagnostics with a custom storage account

Operating system guest diagnostics

A system-assigned managed identity

Assign the following role to User1:

Virtual Machine Contributor

Virtual Machine Administrator Login

Virtual Machine User Login

- A. Mastered
- B. Not Mastered

Answer: A

Explanation:

Answer Area

Configure on the Azure virtual machine:

Boot diagnostics with a custom storage account

Operating system guest diagnostics

A system-assigned managed identity

Assign the following role to User1:

Virtual Machine Contributor

Virtual Machine Administrator Login

Virtual Machine User Login

NEW QUESTION 54

- (Topic 3)

You have an on-premises server named Server 1 that runs Windows Server. You have an Azure subscription that contains a virtual network named VNet1. You need to connect Server 1 to VNet1 by using Azure Network Adapter. What should you use?

- A. the Azure portal
- B. Azure AD Connect
- C. Device Manager
- D. Windows Admin Center

Answer: B

NEW QUESTION 55

DRAG DROP - (Topic 3)

Your network contains an Active Directory domain named contoso.com. The domain contains group managed service accounts (gMSAs). You have a server named Server1 that runs Windows Server and is in a workgroup. Server1 hosts Windows containers. You need to ensure that the Windows containers can authenticate to contoso.com. Which three actions should you perform in sequence? To answer, move the appropriate actions from the list of actions to the answer area and arrange them in the correct order.

Explanation:

NEW QUESTION 59

DRAG DROP - (Topic 3)

You create an Azure virtual machine named Server1 that runs Windows Server. Server1 has the disk configuration shown in the following exhibit.

Answer: A

Explanation:

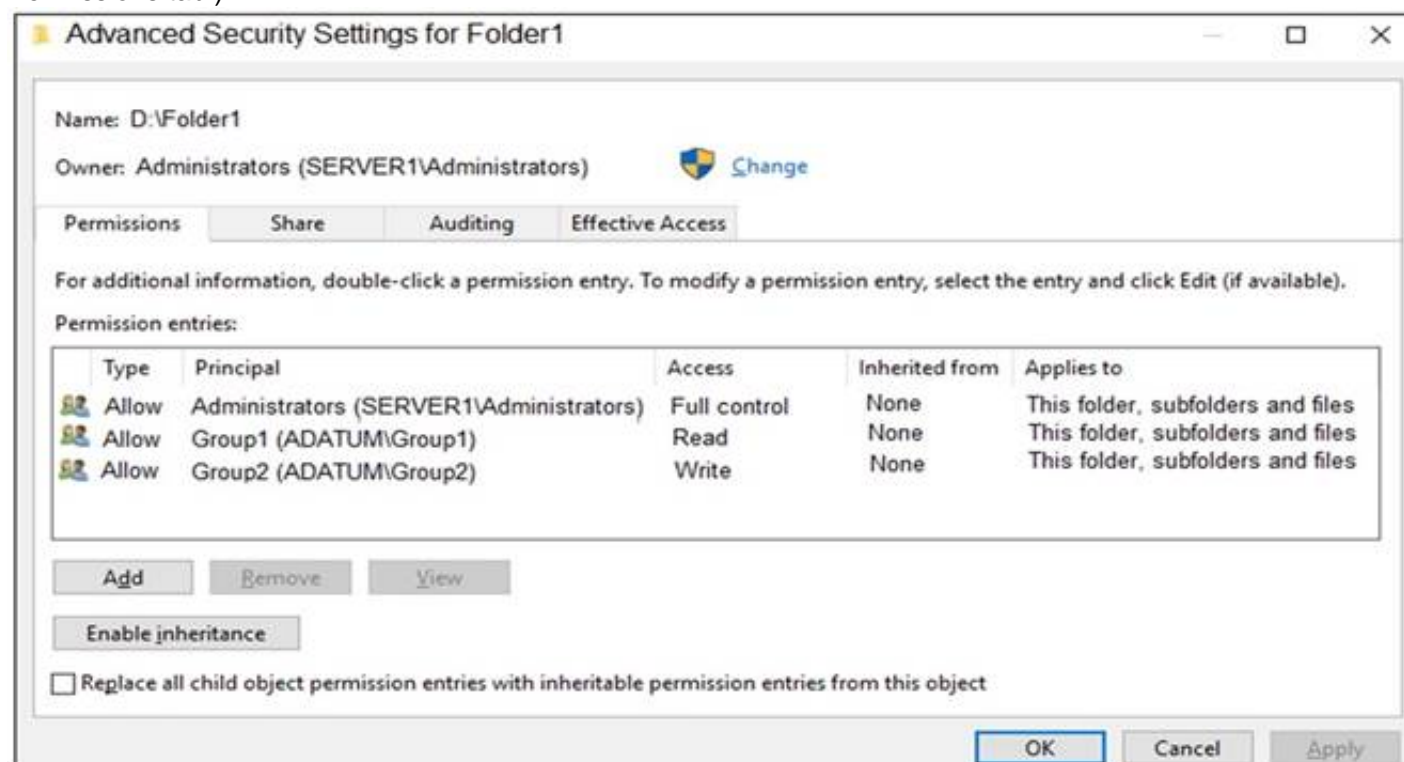
NEW QUESTION 64

HOTSPOT - (Topic 3)

Your network contains an Active Directory Domain Services (AD DS) domain named adatum.com. The domain contains a server named Server1 and the users shown in the following table.

Name	Member of
User1	Group1
User2	Group2
User3	Group3

Server1 contains a folder named D:\Folder1. The advanced security settings for Folder1 are configured as shown in the Permissions exhibit. (Click the Permissions tab.)



The image shows the 'Advanced Security Settings for Folder1' dialog box. The 'Permissions' tab is selected. The 'Name' is D:\Folder1 and the 'Owner' is Administrators (SERVER1\Administrators). The 'Permissions' section shows three entries: Administrators (SERVER1\Administrators) with Full control, Group1 (ADATUM\Group1) with Read, and Group2 (ADATUM\Group2) with Write. All entries are 'Allow' and 'Inherited from None'. The 'Applies to' column shows 'This folder, subfolders and files' for all entries. The 'Enable inheritance' checkbox is checked. The 'Replace all child object permission entries with inheritable permission entries from this object' checkbox is unchecked.

Folder1 is shared by using the following configurations:

```
Path           : D:\Folder1
Name           : Share1
ShareType      : FileSystemDirectory
FolderEnumerationMode : Unrestricted
```

The share permissions for Share1 are shown in the following table.

Group	Permission
Group1	Allow – Change
Group3	Allow – Full Control

For each of the following statements, select Yes if the statement is true. Otherwise, select No.
 NOTE: Each correct selection is worth one point.

Statements	Yes	No
User1 can read the files in Share1.	<input type="radio"/>	<input type="radio"/>
User3 can delete files in Share1.	<input type="radio"/>	<input type="radio"/>
If User2 connects to \\Server1.adatum.com from File Explorer, Share1 will be listed.	<input type="radio"/>	<input type="radio"/>

- A. Mastered
- B. Not Mastered

Answer: A

Explanation:

To access files in a shared folder, you need to be granted permissions on the folder (NTFS permissions) AND permissions on the share. The most restrictive permission of the folder permissions and share permissions apply.

Box 1: Yes

Group1 has Read access to Folder1 and Change access to Share1. Therefore, User1 can read the files in Share1.

Box 2: No

Group3 has Full Control access to Share1. However, Group3 has no permissions configured Folder1. Therefore, User3 cannot access the files in Share1.

Box 3: Yes

Group2 has write permission to Folder1. However, Group2 has no permission on Share1. Therefore, users in Group2 cannot access files in the shared folder.

Access Based Enumeration when enabled hides files and folders that users do not have permission to access. However, Access Based Enumeration is not enabled on Share1.

This is indicated by the FolderEnumerationMode – Unrestricted setting. Therefore, the share will be visible to User2 even though User2 cannot access the shared folder.

NEW QUESTION 67

DRAG DROP - (Topic 3)

You have a disaggregated cluster deployment. The deployment contains a scale-out file server (SOFS) cluster that runs Windows Server and a compute cluster that has the Hyper- V role enabled.

You need to implement Storage Quality of Service (QoS). The solution must ensure that you can control the bandwidth usage between the SOFS cluster and the Hyper-V cluster.

Which cmdlet should you run on each cluster? To answer, drag the appropriate cmdlets to the correct clusters. Each cmdlet may be used once, more than once, or not at all. You may need to drag the split bar between panes or scroll to view content.

NOTE: Each correct selection is worth one point.



A. Mastered

B. Not Mastered

Answer: A

Explanation:



NEW QUESTION 69

- (Topic 3)

You have an on-premises server named Server1 that runs Windows Server. You have an Azure virtual network that contains an Azure virtual network gateway.

You need to connect only Server1 to the Azure virtual network. What should you use?

A. Azure Network Adapter

B. a Site-to-Site VPN

C. an ExpressRoute circuit

D. Azure Extended Network

Answer: B

Explanation:

Reference:

<https://docs.microsoft.com/en-us/windows-server/manage/windows-admin-center/azure/use-azure-network-adapter>

NEW QUESTION 73

- (Topic 3)

Your network contains an Active Directory Domain Services (AD DS) domain.

You have a Group Policy Object (GPO) named GPO1 that contains Group Policy preferences.

You plan to link GPO1 to the domain.

You need to ensure that the preference in GPO1 apply only to domain member servers and NOT to domain controllers or client computers. All the other Group Policy settings in GPO1 must apply to all the computers. The solution must minimize administrative effort.

Which type of item level targeting should you use?

A. Domain

B. Operating System

C. Security Group

D. Environment Variable

Answer: B

Explanation:

Reference:

[https://docs.microsoft.com/en-us/previous-versions/windows/it-pro/windows-server-2012-r2-and-2012/dn789189\(v=ws.11\)#operating-system-targeting](https://docs.microsoft.com/en-us/previous-versions/windows/it-pro/windows-server-2012-r2-and-2012/dn789189(v=ws.11)#operating-system-targeting)

NEW QUESTION 76

DRAG DROP - (Topic 3)

You deploy a single-domain Active Directory Domain Services (AD DS) forest named contoso.com.

You deploy a server to the domain and configure the server to run a service.

You need to ensure that the service can use a group managed service account (gMSA) to authenticate.

Which three PowerShell cmdlets should you run in sequence? To answer, move the appropriate cmdlets from the list of cmdlets to the answer area and arrange them in the correct order.

Cmdlets

Add-ADComputerServiceAccount

Set-KdsConfiguration

Add-ADGroupMember

Add-KdsRootKey

New-ADServiceAccount

Install-ADServiceAccount

>

<

Answer Area

- A. Mastered
- B. Not Mastered

Answer: A

Explanation:

Cmdlets

Add-ADComputerServiceAccount

Set-KdsConfiguration

Add-ADGroupMember

Add-KdsRootKey

New-ADServiceAccount

Install-ADServiceAccount

>

<

Answer Area

Add-KdsRootKey

New-ADServiceAccount

Install-ADServiceAccount

NEW QUESTION 80

HOTSPOT - (Topic 3)

You need to sync files from an on premises server named Server1 to Azure by using Azure File Sync.

You have a cloud tiering policy that is configured for 30 percent free space and 70 days. Volume E on Server1 is 500 GB.

A year ago, you configured E:\Data on Server1 to sync by using Azure File Sync. The files that are visible in E:\Data are shown in the following table.

Name	Size	Last accessed
File1	200 GB	2 days ago
File2	100 GB	10 days ago
File3	200 GB	60 days ago
File4	50 GB	100 days ago

Volume E does NOT contain any other files.

Where are File1 and File3 located? To answer, select the appropriate options in the answer area.

NOTE: Each correct selection is worth one point.

File1:

Server1 only

The Azure file share only

Server1 and the Azure file share

File3:

Server1 only

The Azure file share only

Server1 and the Azure file share

- A. Mastered
- B. Not Mastered

Answer: A

Explanation:

File1:

<input type="checkbox"/> Server1 only
<input type="checkbox"/> The Azure file share only
<input type="checkbox"/> Server1 and the Azure file share

File3:

<input type="checkbox"/> Server1 only
<input type="checkbox"/> The Azure file share only
<input type="checkbox"/> Server1 and the Azure file share

NEW QUESTION 83

- (Topic 3)

You have an on premises Active Directory Domain Services (AD DS) domain that syncs with an Azure Active Directory (Azure AD) tenant.

You plan to implement self-service password reset (SSPR) in Azure AD.

You need to ensure that users that reset their passwords by using SSPR can use the new password resources in the AD DS domain.

What should you do?

- A. Deploy the Azure AD Password Protection proxy service to the on premises network.
- B. Run the Microsoft Azure Active Directory Connect wizard and select Password writeback.
- C. Grant the Change password permission for the domain to the Azure AD Connect service account.
- D. Grant the impersonate a client after authentication user right to the Azure AD Connect service account.

Answer: B

Explanation:

Reference:

<https://docs.microsoft.com/en-us/azure/active-directory/authentication/tutorial-enable-sspr- writeback>

NEW QUESTION 85

HOTSPOT - (Topic 3)

Your network contains two VLANs for client computers and one VLAN for a datacenter. Each VLAN is assigned an IPv4 subnet. Currently, all the client computers use static IP addresses.

You plan to deploy a DHCP server to the VLAN in the datacenter.

You need to use the DHCP server to provide IP configurations to all the client computers. What is the minimum number of scopes and DHCP relays you should create? To answer,

select the appropriate options in the answer area. NOTE: Each correct selection is worth one point.

Answer Area

DHCP scopes:

<input type="checkbox"/> 1
<input type="checkbox"/> 2
<input type="checkbox"/> 3
<input type="checkbox"/> 4

DHCP relays:

<input type="checkbox"/> 1
<input type="checkbox"/> 2
<input type="checkbox"/> 3
<input type="checkbox"/> 4

the selections for DHCP relays

- A. Mastered
- B. Not Mastered

Answer: A

Explanation:

Box 1: 3

You need a DHCP scope for each of the three subnets.

Box 2: 2

The two client VLANs need a DHCP Relay Agent to forward DHCP requests to the DHCP server. The datacenter VLAN that contains the DHCP server does not require a DHCP Relay Agent.

NEW QUESTION 86

- (Topic 3)

Your network contains a multi-site Active Directory Domain Services (AD DS) forest. Each Active Directory site is connected by using manually configured site links and automatically generated connections.

You need to minimize the convergence time for changes to Active Directory. What should you do?

- A. For each site link, modify the options attribute.
- B. For each site link, modify the site link costs.
- C. For each site link, modify the replication schedule.
- D. Create a site link bridge that contains all the site links.

Answer: C

Explanation:

Reference:
<https://docs.microsoft.com/en-us/windows-server/identity/ad-ds/plan/determining-the-interval>

NEW QUESTION 90

- (Topic 3)
You have an on-premises Active Directory Domain Services (AD DS) domain that syncs with an Azure Active Directory (Azure AD) tenant
You have several Windows 10 devices that are Azure AD hybrid-joined.
You need to ensure that when users sign in to the devices, they can use Windows Hello for Business.
Which optional feature should you select in Azure AD Connect?

- A. Device writeback
- B. Group writeback
- C. Password writeback
- D. Directory extension attribute sync
- E. Azure AD app and attribute filtering

Answer: C

Explanation:

Reference:
<https://docs.microsoft.com/en-us/windows/security/identity-protection/hello-for-business/hello-hybrid-cert-trust-prereqs>

NEW QUESTION 94

- (Topic 3)
Your on-premises network contains an Active Directory domain named contoso.com. You have an Azure AD tenant. You plan to sync contoso.com with the Azure AD tenant by using Azure AD Connect cloud sync. You need to create an account that will be used by Azure AD Connect cloud sync. Which type of account should you create?

- A. system-assigned managed identity
- B. group managed service account (gMSA)
- C. user
- D. InetOrgPerson

Answer: C

NEW QUESTION 96

DRAG DROP - (Topic 3)
You have two on-premises servers named Server1 and Servet2 that run Windows Server.
You have an Azure Storage account named storage1 that contains a file share named share1. Server1 syncs with share1 by using Azure File Sync
You need to configure Server2 to sync with share1.
Which three actions should you perform in sequence? To answer, move the appropriate actions from the list of actions to the answer area and arrange them in the correct order.

Actions

Register Server2 with the Storage Sync Service.

Add a Storage Sync Service to the Azure subscription.

On Server2, install the Azure File Sync agent.

Add a cloud endpoint to the sync group.

Add a server endpoint to the sync group.

Answer Area

- A. Mastered
- B. Not Mastered

Answer: A

Explanation:

Actions

Register Server2 with the Storage Sync Service.

Add a Storage Sync Service to the Azure subscription.

On Server2, install the Azure File Sync agent.

Add a cloud endpoint to the sync group.

Add a server endpoint to the sync group.

Answer Area

On Server2, install the Azure File Sync agent.

Register Server2 with the Storage Sync Service.

Add a server endpoint to the sync group.

NEW QUESTION 100

- (Topic 3)
Note: This question is part of a series of questions that present the same scenario. Each question in the series contains a unique solution that might meet the stated goals. Some question sets might have more than one correct solution, while others might not have a correct solution.
After you answer a question in this section, you will NOT be able to return to it. As a result, these questions will not appear in the review screen.
You are planning the deployment of DNS to a new network.
You have three internal DNS servers as shown in the following table.

Name	Location	IP address	Local DNS zone
Server1	Montreal	10.0.1.10	contoso.local
Server2	Toronto	10.0.2.10	east.contoso.local
Server3	Seattle	10.0.3.10	west.contoso.local

The contoso.local zone contains zone delegations for east.contoso.local and west.contoso.local. All the DNS servers use root hints. You need to ensure that all the DNS servers can resolve the names of all the internal namespaces and internet hosts. Solution: On Server2, you create a conditional forwarder for west.contoso.local. On Server3, you create a conditional forwarder for east.contoso.local. Does this meet the goal?

- A. Yes
B. No

Answer: B

NEW QUESTION 101

HOTSPOT - (Topic 3)

Your network contains a two-domain on-premises Active Directory Domain Services (AD DS) forest named Contoso.com. The forest contains the domain controllers shown in the following table.

Name	Description	Domain	Active Directory site
DC1	Forest-wide and domain-wide FSMO role holder	contoso.com	Hub
DC2	Domain-wide FSMO role holder	child.contoso.com	Site1
RODC3	Read-only domain controller (RODC)	contoso.com	Site2

You create an Active Directory site named Site3. Site1, Site2 and Site3 each has a dedicated site link to the Hub site. In Site3, you install a new server named Server1. You need to promote Server1 to an ROOC in child.contoso.com by using the install from Media (IFM) option. The solution must minimize network traffic. What should you do? To answer select the appropriate options in the answer area. NOTE: Each correct selection is worth one point.

Answer Area

Server to use to create the IFM source:

Tool to use to create the IFM source:

- A. Mastered
B. Not Mastered

Answer: A

Explanation:

Answer Area

Server to use to create the IFM source:

Tool to use to create the IFM source:

NEW QUESTION 105

- (Topic 3)

Note: This question is part of a series of questions that present the same scenario. Each question in the series contains a unique solution that might meet the stated goals. Some question sets might have more than one correct solution, while others might not have a correct solution. After you answer a question in this section, you will NOT be able to return to it. As a result, these questions will not appear in the review screen. You are planning the deployment of DNS to a new network. You have three internal DNS servers as shown in the following table.

Name	Location	IP address	Local DNS zone
Server1	Montreal	10.0.1.10	contoso.local
Server2	Toronto	10.0.2.10	east.contoso.local
Server3	Seattle	10.0.3.10	west.contoso.local

The contoso.local zone contains zone delegations for east.contoso.local and west.contoso.local. All the DNS servers use root hints.

You need to ensure that all the DNS servers can resolve the names of all the internal namespaces and internet hosts.

Solution: On Server2, you create a conditional forwarder for contoso.local and west.contoso.local. On Server3, you create a conditional forwarder for contoso.local and east.contoso.local.

Does this meet the goal?

- A. Yes
B. No

Answer: B

NEW QUESTION 108

- (Topic 3)

Your network contains an Active Directory Domain Services (AD DS) domain. The domain contains the domain controllers shown in the following table.

Name	Description
DC1	PDC emulator, RID master, and global catalog server
DC2	Infrastructure master and domain naming master
DC3	Schema master
RODC1	Read-only domain controller (RODC)

You need to ensure that if an attacker compromises the computer account of RODC1, the attacker cannot view the Employee-Number AD DS attribute. Which partition should you modify?

- A. configuration
B. global catalog
C. domain
D. schema

Answer: D

NEW QUESTION 112

- (Topic 3)

Your network contains an on -premises Active Directory Domain Services (AD DS) domain named contoso.com The domain contains the objects shown in the following table.

Name	Type
User1	User
Group1	Universal security group
Group2	Domain local security group
Computer1	Computer

You plan to sync contoso.com with an Azure Active Directory (Azure AD) tenant by using Azure AD Connect You need to ensure that all the objects can be used in Conditional Access policies What should you do?

- A. Change the scope of Group2 to Universal
B. Clear the Configure device writeback option.
C. Change the scope of Group1 and Group2 to Global
D. Select the Configure Hybrid Azure AD join option.

Answer: D

Explanation:

Hybrid Azure AD join needs to be configured to enable Computer1 to be used in Conditional Access Policies. Synchronized users, universal groups and domain local groups can be used in Conditional Access Policies.

NEW QUESTION 115

- (Topic 3)

You have an Azure virtual machine named VM1 that runs Windows Server

You need to configure the management of VM1 to meet the following requirements:

- Require administrators to request access to VM1 before establishing a Remote Desktop connection.
- Limit access to VM1 from specific source IP addresses.
- Limit access to VM1 to a specific management port What should you configure?

- A. a network security group (NSG)
B. Azure Active Directory (Azure AD) Privileged identity Management (PIM)
C. Azure Front Door
D. Microsoft Defender for Cloud

Answer: D

Explanation:

Reference:

<https://docs.microsoft.com/en-us/azure/defender-fo>

NEW QUESTION 120

HOTSPOT - (Topic 3)

You have a server named Server1 that runs Windows Server and has the Hyper-V server role installed.

You need 10 limit which Hyper-V module cmdlets helpdesk users can use when administering Server 1 remotely.

You configure Just Enough Administration (JEA) and successfully build the role capabilities and session configuration files.

How should you complete the PowerShell command? To answer, select the appropriate options in the answer area.

NOTE: Each correct selection is worth one point.

Answer Area



A. Mastered

B. Not Mastered

Answer: A

Explanation:

Answer Area



NEW QUESTION 122

- (Topic 3)

Your network contains an Active Directory Domain Services (AD DS) domain.

You plan to use Active Directory Administrative Center to create a new user named User1. Which two attributes are required to create User1? Each correct answer presents part of the solution.

NOTE: Each correct selection is worth one point.

A. Password

B. Profile path

C. User SamAccountName logon

D. Full name

E. First name

F. User UPN logon

Answer: AC

NEW QUESTION 126

- (Topic 3)

You have five file servers that run Windows Server.

You need to block users from uploading video files that have the .mov extension to shared folders on the file servers. All other types of files must be allowed. The solution must minimize administrative effort.

What should you create?

A. a Dynamic Access Control central access policy

B. a file screen

C. a Dynamic Access Control central access rule

D. a data loss prevention (DLP) policy

Answer: B

Explanation:

Reference:

<https://docs.microsoft.com/en-us/windows-server/storage/fsrm/file-screening-management>

NEW QUESTION 130

HOTSPOT - (Topic 3)

You have on-premises servers that run Windows Server as shown in the following table.

Name	Local content
Server1	D:\Folder1\File1.docx
Server2	D:\Data1\File3.docx

You have an Azure file share named share1 that stores two files named File2.docx and File3.docx.
You create an Azure File Sync sync group that includes the following endpoints:

- ? share
- ? D:\Folder1 on Server1
- ? D:\Data1 on Server2

For each of the following statements, select Yes if the statement is true. Otherwise, select No.
NOTE: Each correct selection is worth one point.

Statements	Yes	No
You can create a file named File2.docx in D:\Folder1 on Server1.	<input type="checkbox"/>	<input type="checkbox"/>
You can create a file named File1.docx in D:\Data1 on Server2.	<input type="checkbox"/>	<input type="checkbox"/>
File3.docx will sync to Server1.	<input type="checkbox"/>	<input type="checkbox"/>

- A. Mastered
- B. Not Mastered

Answer: A

Explanation:

Statements	Yes	No
You can create a file named File2.docx in D:\Folder1 on Server1.	<input checked="" type="checkbox"/>	<input type="checkbox"/>
You can create a file named File1.docx in D:\Data1 on Server2.	<input checked="" type="checkbox"/>	<input type="checkbox"/>
File3.docx will sync to Server1.	<input type="checkbox"/>	<input checked="" type="checkbox"/>

NEW QUESTION 134
HOTSPOT - (Topic 3)

You have an on-premises Active Directory Domain Services (AD DS) domain that syncs with an Azure Active Directory (Azure AD) tenant.
You have an on-premises web app named WebApp1 that only supports Kerberos authentication.
You need to ensure that users can access WebApp1 by using their Azure AD account. The solution must minimize administrative effort.
What should you configure? To answer, select the appropriate options in the answer area. NOTE: Each correct selection is worth one point.

Answer Area

In Azure AD:

The Azure AD Application Proxy connector

The Azure AD Application Proxy service

Web Application Proxy

On-premises:

The Azure AD Application Proxy connector

The Azure AD Application Proxy service

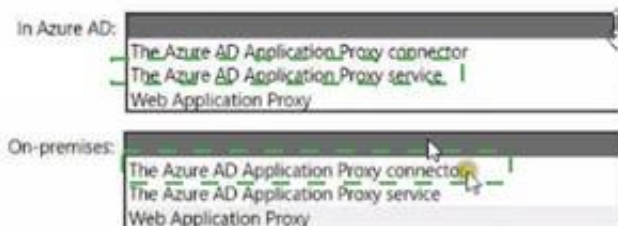
Web Application Proxy

- A. Mastered
- B. Not Mastered

Answer: A

Explanation:

Answer Area



NEW QUESTION 136

HOTSPOT - (Topic 3)

You have an Azure Active Directory Domain Services (Azure AD DS) domain. You create a new user named Admin1.

You need Admin1 to deploy custom Group Policy settings to all the computers in the domain. The solution must use the principle of least privilege.

What should you include in the solution? To answer, select the appropriate options in the answer area.

NOTE: Each correct selection is worth one point

Add Admin1 to the following group:

AAD DC Administrators
Domain Admins
Group Policy Creator Owners

Instruct Admin1 to apply the custom Group Policy settings by:

Creating a new Group Policy Object (GPO) and linking the GPO to the domain
Modifying AADDC Computers GPO
Modifying the default domain GPO

- A. Mastered
- B. Not Mastered

Answer: A

Explanation:

NEW QUESTION 140

- (Topic 3)

Your company has a main office and a branch office. The two offices are connected by using a WAN link. Each office contains a firewall that filters WAN traffic.

The network in the branch office contains 10 servers that run Windows Server. All servers are administered from the main office only.

You plan to manage the servers in the branch office by using a Windows Admin Center gateway.

On a server in the branch office, you install the Windows Admin Center gateway by using the defaults settings.

You need to configure the firewall in the branch office to allow the required inbound connection to the Windows Admin Center gateway.

Which inbound TCP port should you allow?

- A. 443
- B. 3389
- C. 5985
- D. 6516

Answer: A

NEW QUESTION 141

- (Topic 3)

Note: This question is part of a series of questions that present the same scenario. Each question in the series contains a unique solution that might meet the stated goals. Some question sets might have more than one correct solution, while others might not have a correct solution.

After you answer a question in this section, you will NOT be able to return to it. As a result, these questions will not appear in the review screen.

You are planning the deployment of DNS to a new network.

You have three internal DNS servers as shown in the following table.

Name	Location	IP address	Local DNS zone
Server1	Montreal	10.0.1.10	contoso.local
Server2	Toronto	10.0.2.10	east.contoso.local
Server3	Seattle	10.0.3.10	west.contoso.local

The contoso.local zone contains zone delegations for east.contoso.local and west.contoso.local. All the DNS servers use root hints.

You need to ensure that all the DNS servers can resolve the names of all the internal namespaces and internet hosts.

Solution: On Server2 and Server3, you configure a conditional forwarder for contoso.local. Does this meet the goal?

- A. Yes
- B. No

Answer: B

Explanation:

[https://docs.microsoft.com/en-us/previous-versions/windows/it-pro/windows-server-2008-r2-and-2008/cc794735\(v=ws.10\)](https://docs.microsoft.com/en-us/previous-versions/windows/it-pro/windows-server-2008-r2-and-2008/cc794735(v=ws.10))

NEW QUESTION 146

HOTSPOT - (Topic 3)

You have an Azure subscription named sub1 and 500 on-premises virtual machines that run Windows Server. You plan to onboard the on-premises virtual machines to Azure Arc by running the Azure Arc deployment script. You need to create an identity that will be used by the script to authenticate access to sub1. The solution must use the principle of least privilege. How should you complete the command? To answer, select the appropriate options in the answer area.

NOTE: Each correct selection is worth one point.

Answer Area

<div>New-AzADAppCredential</div> <div>New-AzADServicePrincipal</div> <div>New-AzUserAssignedIdentity</div>	-Displayname 'Arc-for-servers' -Role	<div>Azure Connected Machine Onboarding</div> <div>Virtual Machine Contributor</div> <div>Virtual Machine User Login</div>
--	--------------------------------------	--

- A. Mastered
B. Not Mastered

Answer: A

Explanation:

Answer Area

<div>New-AzADAppCredential</div> <div>New-AzADServicePrincipal</div> <div>New-AzUserAssignedIdentity</div>	-Displayname 'Arc-for-servers' -Role	<div>Azure Connected Machine Onboarding</div> <div>Virtual Machine Contributor</div> <div>Virtual Machine User Login</div>
--	--------------------------------------	--

NEW QUESTION 150

HOTSPOT - (Topic 3)

You have a Group Policy Object (GPO) named GPO1 that contains user settings only. You plan to apply GPO1 to a global security group named Group1. You link GPO1 to the domain, and you remove all the permissions granted to the Authenticated Users group. You need to configure permissions for GPO1 to meet the following requirements.

- GPO1 must apply only to the users in Group 1.
- The solution must use the principle of least privilege

Answer Area

Group1:	<div>Apply group policy and Read</div> <div>Apply group policy only</div> <div>Read only</div>
Domain Computers:	<div>Apply group policy and Read</div> <div>Apply group policy only</div> <div>Read only</div>

- A. Mastered
B. Not Mastered

Answer: A

Explanation:

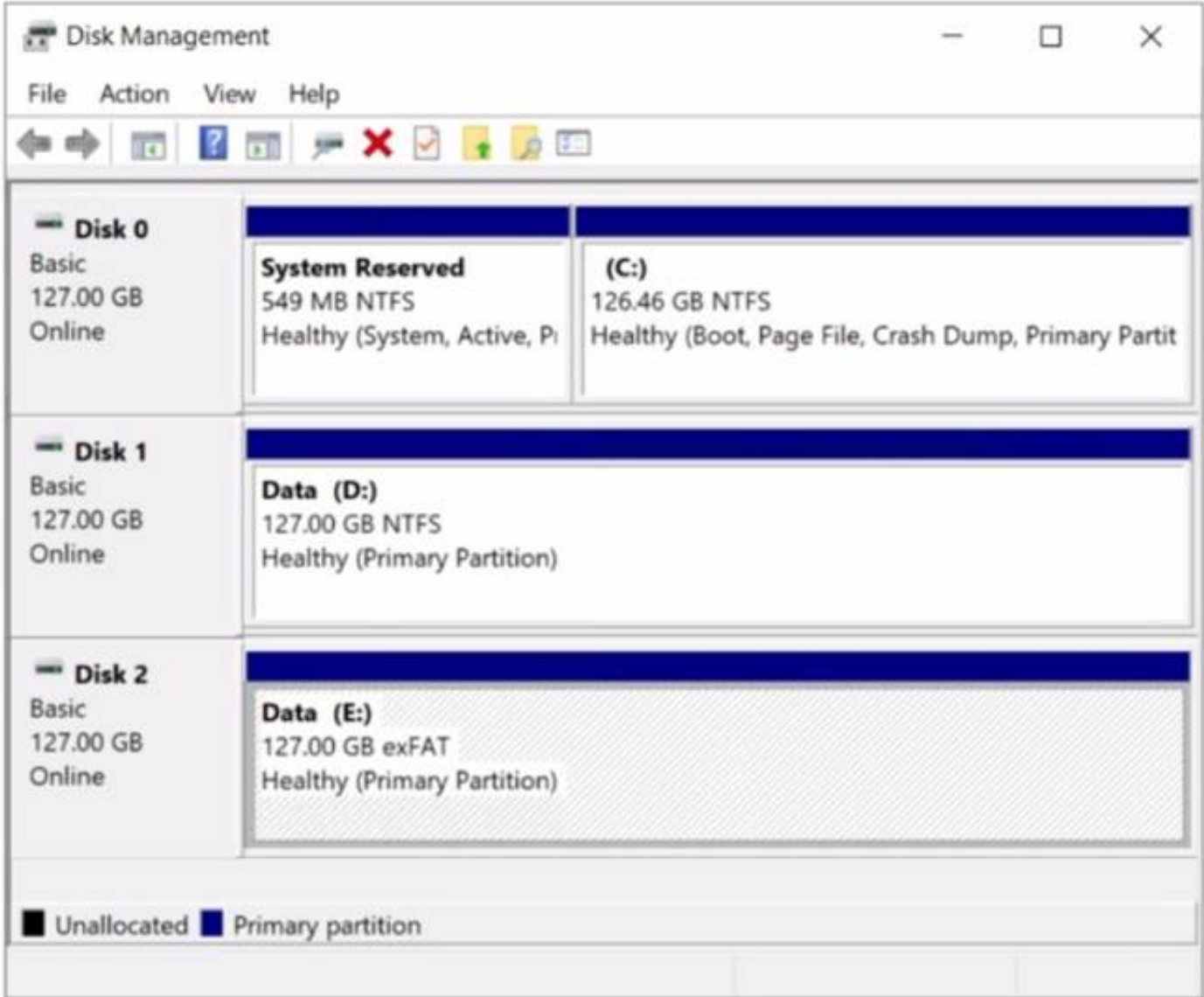
Answer Area

Group1:	<div>Apply group policy and Read</div> <div>Apply group policy only</div> <div>Read only</div>
Domain Computers:	<div>Apply group policy and Read</div> <div>Apply group policy only</div> <div>Read only</div>

NEW QUESTION 153

- (Topic 3)

You have a server named Server1 that runs Windows Server. The disks on Server1 are configured as shown in the following exhibit.



You need to convert volume E to ReFS. The solution must meet the following requirements:

- Preserve the existing data on volume E.
- Minimize administrative effort. What should you do first?

- A. Take Disk 2 offline.
- B. Back up the data on volume E.
- C. Convert Disk 2 to a dynamic disk.
- D. Runconvert.exe.

Answer: B

NEW QUESTION 154

HOTSPOT - (Topic 3)

You have a server named Server1 that runs Windows Server. Server1 has a just-a-bunch- of-disks (JBOD) enclosure attached. You plan to create a storage pool on Server1 and a virtual disk that will use a mirror layout. You are considering whether to use a two-way or a three-way mirror layout. What is the minimum number of disks required for each type of mirror layout? To answer, select the appropriate options in the answer area. NOTE: Each correct selection is worth one point.

Answer Area

Two-way mirror:

1

2

3

4

5

6

Three-way mirror:

1

2

3

4

5

6

- A. Mastered
- B. Not Mastered

Answer: A

Explanation:

Answer Area

Two-way mirror:

1

2

3

4

5

6

Three-way mirror:

1

2

3

4

5

6

NEW QUESTION 159

- (Topic 3)
You have an Active Directory Domain Services (AD DS) domain. The domain contains a member server named Server1 that runs Windows Server. You need to ensure that you can manage password policies for the domain from Serve1. Which command should you run first on Server1?

- A. Install-Windows Feature RSAT-AO-PowerShell
- B. Install-Windows Feature 6PHC
- C. Install-Windows Feature RSAT-AD-Tool\$
- D. Install-windows Feature RSAT-AWIMS

Answer: C

NEW QUESTION 161

- (Topic 3)
You have a server named Server1 that runs Windows Server and contains two drives named C and D. Server1 hosts multiple file shares. You enable Data Deduplication on drive D and select the General purpose file server workload. You need to minimize the space consumed by files that were recently modified or deleted. What should you do?

- A. Run the set-dedupvolume cmdlet and configure the scrubbing job.
- B. Run the Set-DedupSchedule Cmdlet and configure a GarbageCollection job.
- C. Run the set-Dedupvoiume cmdlet and configure the InputOutputScale settings.
- D. Run the Set-DedupSchedule cmdlet and configure the optimization job.

Answer: B

NEW QUESTION 163

HOTSPOT - (Topic 3)
You have an on-premises server named Server1 that runs Windows Server and has internet connectivity. You have an Azure subscription. You need to monitor Server1 by using Azure Monitor. Which resources should you create in the subscription, and what should you install on Server1? To answer, select the appropriate options in the answer area. NOTE: Each correct selection is worth one point.

In the subscription, create:

An Azure Files storage account

A Log Analytics workspace

An Azure SQL database and a data collection rule

An Azure Blob Storage account and a data collection rule

On Server1, install:

The Azure Monitor agent

The Analytics gateway

The Device Health Attestation server role

- A. Mastered
- B. Not Mastered

Answer: A

Explanation:

NEW QUESTION 166

HOTSPOT - (Topic 3)

Your network contains two Active Directory Domain Services (AD DS) forests named contoso.com and fabrikam.com. A two-way forest trust exists between the forests. Each forest contains a single domain. The domains contain the servers shown in the following table.

Name	Domain	Description
Server1	contoso.com	Hosts a Windows Admin Center gateway
Server2	fabrikam.com	Hosts resources that will be managed remotely by using Windows Admin Center on Server1

You need to configure resources based constrained delegation so that the users in contoso.com can use Windows Admin Center on Server1 to connect to Server2. How should you complete the command? To answer, select the appropriate options in the answer area.

NOTE: Each correct selection is worth one point.

Answer Area

Set-ADComputer -Identity

(Get-ADComputer server1.contoso.com)

(Get-ADComputer server2.fabrikam.com)

(Get-ADGroup 'Contoso\Domain Users')

(Get-ADGroup 'Fabrikam\Domain Users')

-PrincipalsAllowedToDelegateToAccount

(Get-ADComputer server1.contoso.com)

(Get-ADComputer server2.fabrikam.com)

(Get-ADGroup 'Contoso\Domain Users')

(Get-ADGroup 'Fabrikam\Domain Users')

- A. Mastered
- B. Not Mastered

Answer: A

Explanation:

Answer Area

Set-ADComputer -Identity

(Get-ADComputer server1.contoso.com)

(Get-ADComputer server2.fabrikam.com)

(Get-ADGroup 'Contoso\Domain Users')

(Get-ADGroup 'Fabrikam\Domain Users')

-PrincipalsAllowedToDelegateToAccount

(Get-ADComputer server1.contoso.com)

(Get-ADComputer server2.fabrikam.com)

(Get-ADGroup 'Contoso\Domain Users')

(Get-ADGroup 'Fabrikam\Domain Users')

NEW QUESTION 169

- (Topic 2)

You need to configure the Group Policy settings to ensure that the Azure Virtual Desktop session hosts meet the security requirements. What should you configure?

- A. security filtering for the link of GP04
- B. security filtering for the link of GPO1
- C. loopback processing in GPO4
- D. the Enforced property for the link of GP01
- E. loopback processing in GPO1
- F. the Enforced property for the link of GP04

Answer: C

NEW QUESTION 173

HOTSPOT - (Topic 2)

You need to configure network communication between the Seattle and New York offices. The solution must meet the networking requirements. What should you configure? To answer, select the appropriate options in the answer area. NOTE: Each correct selection is worth one point.

On a Virtual WAN hub:

An ExpressRoute gateway
A virtual network gateway
An ExpressRoute circuit connection

In the offices:

An ExpressRoute circuit connection
A Site to-Site VPN
An Azure application gateway
An on premises data gateway

- A. Mastered
- B. Not Mastered

Answer: A

Explanation:

On a Virtual WAN hub:

An ExpressRoute gateway
A virtual network gateway
An ExpressRoute circuit connection

In the offices:

An ExpressRoute circuit connection
A Site to-Site VPN
An Azure application gateway
An on premises data gateway

NEW QUESTION 178

- (Topic 1)
You need to meet the technical requirements for VM2. What should you do?

- A. Implement shielded virtual machines.
- B. Enable the Guest services integration service.
- C. Implement Credential Guard.
- D. Enable enhanced session mode.

Answer: D

NEW QUESTION 180

- (Topic 1)
You need to meet the technical requirements for Server1. Which users can currently perform the required tasks?

- A. Admin1 only
- B. Admin3 only
- C. Admin1 and Admin3 only
- D. Admin1 Admin2. and Admm3

Answer: C

NEW QUESTION 181

- (Topic 2)
You need to implement an availability solution for DHCP that meets the networking requirements.
Which two actions should you perform? Each correct answer presents part of the solution. NOTE: Each correct selection is worth one point.

- A. On DHCP1. create a scope that contains 25 percent of the IP addresses from Scope2.
- B. On the router in each office, configure a DHCP relay.
- C. DHCP2. configure a scope that contains 25 percent of the IP addresses from Scope 1 .

- D. On each DHCP server, install the Failover Clustering feature and add the DHCP clusterrole.
- E. On each DHCP scope, configure DHCP failover.

Answer: BE

Explanation:

Reference:
[https://docs.microsoft.com/en-us/previous-versions/windows/it-pro/windows-server-2012-r2-and-2012/hh831385\(v=ws.11\)](https://docs.microsoft.com/en-us/previous-versions/windows/it-pro/windows-server-2012-r2-and-2012/hh831385(v=ws.11))

NEW QUESTION 184

HOTSPOT - (Topic 1)

You need to meet the technical requirements for Server4.

Which cmdlets should you run on Server1 and Server4? To answer, select the appropriate options in the answer area.

NOTE: Each correct selection is worth one point.

Server1:

Enable-PSRemoting
Enable-ServerManagerStandardUserRemoting
Set-Item
Start-Service

Server4:

Enable-PSRemoting
Enable-ServerManagerStandardUserRemoting
Set-Item
Start-Service

- A. Mastered
- B. Not Mastered

Answer: A

Explanation:

Server1:

Enable-PSRemoting
Enable-ServerManagerStandardUserRemoting
Set-Item
Start-Service

Server4:

Enable-PSRemoting
Enable-ServerManagerStandardUserRemoting
Set-Item
Start-Service

NEW QUESTION 187

HOTSPOT - (Topic 1)

For each of the following statements, select Yes if the statement is true. Otherwise, select No.

NOTE: Each correct selection is worth one point.

Answer Area

Statements	Yes	No
Admin1 must use a password that has at least 14 characters.	<input type="radio"/>	<input type="radio"/>
User1 must use a password that has at least 10 characters.	<input type="radio"/>	<input type="radio"/>
If Admin1 creates a new local user on Server1, the password for the new user must be at least eight characters.	<input type="radio"/>	<input type="radio"/>

- A. Mastered
- B. Not Mastered

Answer: A

Explanation:

Answer Area

Statements

Admin1 must use a password that has at least 14 characters.

User1 must use a password that has at least 10 characters.

If Admin1 creates a new local user on Server1, the password for the new user must be at least eight characters.

Yes

No

NEW QUESTION 190

- (Topic 1)
You need to meet the technical requirements for User1. The solution must use the principle of least privilege. What should you do?

A. Add Users1 to the Server Operators group in contoso.com.
B. Create a delegation on contoso.com.
C. Add Users1 to the Account Operators group in contoso.com.
D. Create a delegation on OU3.

Answer: D

Explanation:
Reference:
<https://docs.microsoft.com/en-us/windows-server/identity/ad-ds/plan/delegating-administration-of-account-ous-and-resource-ous>

NEW QUESTION 195

HOTSPOT - (Topic 1)
You need to meet the technical requirements for VM1.
Which cmdlet should you run first? To answer, select the appropriate options in the answer area.
NOTE: Each correct selection is worth one point.

Answer Area

Set-VM

Set-VMBios

Set-VMHost

Set-VMFirmware

Set-VMProcessor

VM1

-NewVMName

-GuestControlledCacheTypes

-EnableHostResourceProtection

-ExposeVirtualizationExtensions

\$true

- A. Mastered
B. Not Mastered

Answer: A

Explanation:
Graphical user interface, text, application Description automatically generated

NEW QUESTION 197

.....

Thank You for Trying Our Product

We offer two products:

1st - We have Practice Tests Software with Actual Exam Questions

2nd - Questons and Answers in PDF Format

AZ-800 Practice Exam Features:

- * AZ-800 Questions and Answers Updated Frequently
- * AZ-800 Practice Questions Verified by Expert Senior Certified Staff
- * AZ-800 Most Realistic Questions that Guarantee you a Pass on Your FirstTry
- * AZ-800 Practice Test Questions in Multiple Choice Formats and Updatesfor 1 Year

100% Actual & Verified — Instant Download, Please Click
[Order The AZ-800 Practice Test Here](#)