

ISC2

Exam Questions CISSP

Certified Information Systems Security Professional (CISSP)



NEW QUESTION 1

- (Exam Topic 1)

When assessing an organization's security policy according to standards established by the International Organization for Standardization (ISO) 27001 and 27002, when can management responsibilities be defined?

- A. Only when assets are clearly defined
- B. Only when standards are defined
- C. Only when controls are put in place
- D. Only procedures are defined

Answer: A

NEW QUESTION 2

- (Exam Topic 1)

Which of the following represents the GREATEST risk to data confidentiality?

- A. Network redundancies are not implemented
- B. Security awareness training is not completed
- C. Backup tapes are generated unencrypted
- D. Users have administrative privileges

Answer: C

NEW QUESTION 3

- (Exam Topic 1)

Which of the following types of technologies would be the MOST cost-effective method to provide a reactive control for protecting personnel in public areas?

- A. Install mantraps at the building entrances
- B. Enclose the personnel entry area with polycarbonate plastic
- C. Supply a duress alarm for personnel exposed to the public
- D. Hire a guard to protect the public area

Answer: D

NEW QUESTION 4

- (Exam Topic 1)

What is the MOST important consideration from a data security perspective when an organization plans to relocate?

- A. Ensure the fire prevention and detection systems are sufficient to protect personnel
- B. Review the architectural plans to determine how many emergency exits are present
- C. Conduct a gap analysis of a new facilities against existing security requirements
- D. Revise the Disaster Recovery and Business Continuity (DR/BC) plan

Answer: C

NEW QUESTION 5

- (Exam Topic 2)

In a data classification scheme, the data is owned by the

- A. system security managers
- B. business managers
- C. Information Technology (IT) managers
- D. end users

Answer: B

NEW QUESTION 6

- (Exam Topic 2)

Which of the following is an initial consideration when developing an information security management system?

- A. Identify the contractual security obligations that apply to the organizations
- B. Understand the value of the information assets
- C. Identify the level of residual risk that is tolerable to management
- D. Identify relevant legislative and regulatory compliance requirements

Answer: B

NEW QUESTION 7

- (Exam Topic 2)

When implementing a data classification program, why is it important to avoid too much granularity?

- A. The process will require too many resources
- B. It will be difficult to apply to both hardware and software
- C. It will be difficult to assign ownership to the data
- D. The process will be perceived as having value

Answer: A

NEW QUESTION 8

- (Exam Topic 2)

Which of the following is MOST important when assigning ownership of an asset to a department?

- A. The department should report to the business owner
- B. Ownership of the asset should be periodically reviewed
- C. Individual accountability should be ensured
- D. All members should be trained on their responsibilities

Answer: B

NEW QUESTION 9

- (Exam Topic 3)

Which security service is served by the process of encryption plaintext with the sender's private key and decrypting cipher text with the sender's public key?

- A. Confidentiality
- B. Integrity
- C. Identification
- D. Availability

Answer: A

NEW QUESTION 10

- (Exam Topic 3)

Who in the organization is accountable for classification of data information assets?

- A. Data owner
- B. Data architect
- C. Chief Information Security Officer (CISO)
- D. Chief Information Officer (CIO)

Answer: A

NEW QUESTION 10

- (Exam Topic 3)

What is the second phase of Public Key Infrastructure (PKI) key/certificate life-cycle management?

- A. Implementation Phase
- B. Initialization Phase
- C. Cancellation Phase
- D. Issued Phase

Answer: D

NEW QUESTION 15

- (Exam Topic 4)

Which of the following operates at the Network Layer of the Open System Interconnection (OSI) model?

- A. Packet filtering
- B. Port services filtering
- C. Content filtering
- D. Application access control

Answer: A

NEW QUESTION 16

- (Exam Topic 4)

An input validation and exception handling vulnerability has been discovered on a critical web-based system. Which of the following is MOST suited to quickly implement a control?

- A. Add a new rule to the application layer firewall
- B. Block access to the service
- C. Install an Intrusion Detection System (IDS)
- D. Patch the application source code

Answer: A

NEW QUESTION 20

- (Exam Topic 4)

Which of the following is used by the Point-to-Point Protocol (PPP) to determine packet formats?

- A. Layer 2 Tunneling Protocol (L2TP)
- B. Link Control Protocol (LCP)

- C. Challenge Handshake Authentication Protocol (CHAP)
- D. Packet Transfer Protocol (PTP)

Answer: B

NEW QUESTION 24

- (Exam Topic 4)

What is the purpose of an Internet Protocol (IP) spoofing attack?

- A. To send excessive amounts of data to a process, making it unpredictable
- B. To intercept network traffic without authorization
- C. To disguise the destination address from a target's IP filtering devices
- D. To convince a system that it is communicating with a known entity

Answer: D

NEW QUESTION 28

- (Exam Topic 4)

At what level of the Open System Interconnection (OSI) model is data at rest on a Storage Area Network (SAN) located?

- A. Link layer
- B. Physical layer
- C. Session layer
- D. Application layer

Answer: D

NEW QUESTION 30

- (Exam Topic 4)

Which of the following factors contributes to the weakness of Wired Equivalent Privacy (WEP) protocol?

- A. WEP uses a small range Initialization Vector (IV)
- B. WEP uses Message Digest 5 (MD5)
- C. WEP uses Diffie-Hellman
- D. WEP does not use any Initialization Vector (IV)

Answer: A

NEW QUESTION 34

- (Exam Topic 5)

A manufacturing organization wants to establish a Federated Identity Management (FIM) system with its 20 different supplier companies. Which of the following is the BEST solution for the manufacturing organization?

- A. Trusted third-party certification
- B. Lightweight Directory Access Protocol (LDAP)
- C. Security Assertion Markup language (SAML)
- D. Cross-certification

Answer: C

NEW QUESTION 38

- (Exam Topic 5)

Which of the following BEST describes an access control method utilizing cryptographic keys derived from a smart card private key that is embedded within mobile devices?

- A. Derived credential
- B. Temporary security credential
- C. Mobile device credentialing service
- D. Digest authentication

Answer: A

NEW QUESTION 42

- (Exam Topic 6)

Which of the following could cause a Denial of Service (DoS) against an authentication system?

- A. Encryption of audit logs
- B. No archiving of audit logs
- C. Hashing of audit logs
- D. Remote access audit logs

Answer: D

NEW QUESTION 47

- (Exam Topic 6)

A Virtual Machine (VM) environment has five guest Operating Systems (OS) and provides strong isolation. What MUST an administrator review to audit a user's access to data files?

- A. Host VM monitor audit logs
- B. Guest OS access controls
- C. Host VM access controls
- D. Guest OS audit logs

Answer: A

NEW QUESTION 52

- (Exam Topic 6)

In which of the following programs is it MOST important to include the collection of security process data?

- A. Quarterly access reviews
- B. Security continuous monitoring
- C. Business continuity testing
- D. Annual security training

Answer: A

NEW QUESTION 54

- (Exam Topic 7)

A Business Continuity Plan/Disaster Recovery Plan (BCP/DRP) will provide which of the following?

- A. Guaranteed recovery of all business functions
- B. Minimization of the need decision making during a crisis
- C. Insurance against litigation following a disaster
- D. Protection from loss of organization resources

Answer: D

NEW QUESTION 58

- (Exam Topic 7)

What would be the MOST cost effective solution for a Disaster Recovery (DR) site given that the organization's systems cannot be unavailable for more than 24 hours?

- A. Warm site
- B. Hot site
- C. Mirror site
- D. Cold site

Answer: A

NEW QUESTION 63

- (Exam Topic 7)

A continuous information security monitoring program can BEST reduce risk through which of the following?

- A. Collecting security events and correlating them to identify anomalies
- B. Facilitating system-wide visibility into the activities of critical user accounts
- C. Encompassing people, process, and technology
- D. Logging both scheduled and unscheduled system changes

Answer: B

NEW QUESTION 67

- (Exam Topic 7)

Which of the following types of business continuity tests includes assessment of resilience to internal and external risks without endangering live operations?

- A. Walkthrough
- B. Simulation
- C. Parallel
- D. White box

Answer: B

NEW QUESTION 71

- (Exam Topic 7)

When is a Business Continuity Plan (BCP) considered to be valid?

- A. When it has been validated by the Business Continuity (BC) manager
- B. When it has been validated by the board of directors
- C. When it has been validated by all threat scenarios
- D. When it has been validated by realistic exercises

Answer: D

NEW QUESTION 73

- (Exam Topic 8)

Which of the following is the BEST method to prevent malware from being introduced into a production environment?

- A. Purchase software from a limited list of retailers
- B. Verify the hash key or certificate key of all updates
- C. Do not permit programs, patches, or updates from the Internet
- D. Test all new software in a segregated environment

Answer: D

NEW QUESTION 74

- (Exam Topic 8)

The configuration management and control task of the certification and accreditation process is incorporated in which phase of the System Development Life Cycle (SDLC)?

- A. System acquisition and development
- B. System operations and maintenance
- C. System initiation
- D. System implementation

Answer: A

Explanation:

Reference <https://online.concordia.edu/computer-science/system-development-life-cycle-phases/>

NEW QUESTION 79

- (Exam Topic 9)

The three PRIMARY requirements for a penetration test are

- A. A defined goal, limited time period, and approval of management
- B. A general objective, unlimited time, and approval of the network administrator
- C. An objective statement, disclosed methodology, and fixed cost
- D. A stated objective, liability waiver, and disclosed methodology

Answer: A

NEW QUESTION 82

- (Exam Topic 9)

Which of the following is the FIRST action that a system administrator should take when it is revealed during a penetration test that everyone in an organization has unauthorized access to a server holding sensitive data?

- A. Immediately document the finding and report to senior management.
- B. Use system privileges to alter the permissions to secure the server
- C. Continue the testing to its completion and then inform IT management
- D. Terminate the penetration test and pass the finding to the server management team

Answer: A

NEW QUESTION 87

- (Exam Topic 9)

Which of the following MUST be part of a contract to support electronic discovery of data stored in a cloud environment?

- A. Integration with organizational directory services for authentication
- B. Tokenization of data
- C. Accommodation of hybrid deployment models
- D. Identification of data location

Answer: D

NEW QUESTION 88

- (Exam Topic 9)

To prevent inadvertent disclosure of restricted information, which of the following would be the LEAST effective process for eliminating data prior to the media being discarded?

- A. Multiple-pass overwriting
- B. Degaussing
- C. High-level formatting
- D. Physical destruction

Answer: C

NEW QUESTION 92

- (Exam Topic 9)

A vulnerability test on an Information System (IS) is conducted to

- A. exploit security weaknesses in the IS.
- B. measure system performance on systems with weak security controls.
- C. evaluate the effectiveness of security controls.
- D. prepare for Disaster Recovery (DR) planning.

Answer: C

NEW QUESTION 96

- (Exam Topic 9)

Contingency plan exercises are intended to do which of the following?

- A. Train personnel in roles and responsibilities
- B. Validate service level agreements
- C. Train maintenance personnel
- D. Validate operation metrics

Answer: A

NEW QUESTION 100

- (Exam Topic 9)

Which of the following is a physical security control that protects Automated Teller Machines (ATM) from skimming?

- A. Anti-tampering
- B. Secure card reader
- C. Radio Frequency (RF) scanner
- D. Intrusion Prevention System (IPS)

Answer: A

NEW QUESTION 102

- (Exam Topic 9)

The key benefits of a signed and encrypted e-mail include

- A. confidentiality, authentication, and authorization.
- B. confidentiality, non-repudiation, and authentication.
- C. non-repudiation, authorization, and authentication.
- D. non-repudiation, confidentiality, and authorization.

Answer: B

NEW QUESTION 104

- (Exam Topic 9)

An internal Service Level Agreement (SLA) covering security is signed by senior managers and is in place. When should compliance to the SLA be reviewed to ensure that a good security posture is being delivered?

- A. As part of the SLA renewal process
- B. Prior to a planned security audit
- C. Immediately after a security breach
- D. At regularly scheduled meetings

Answer: D

NEW QUESTION 109

- (Exam Topic 9)

Which layer of the Open Systems Interconnections (OSI) model implementation adds information concerning the logical connection between the sender and receiver?

- A. Physical
- B. Session
- C. Transport
- D. Data-Link

Answer: C

NEW QUESTION 110

- (Exam Topic 9)

Checking routing information on e-mail to determine it is in a valid format and contains valid information is an example of which of the following anti-spam approaches?

- A. Simple Mail Transfer Protocol (SMTP) blacklist
- B. Reverse Domain Name System (DNS) lookup
- C. Hashing algorithm
- D. Header analysis

Answer: D

NEW QUESTION 113

- (Exam Topic 9)

The overall goal of a penetration test is to determine a system's

- A. ability to withstand an attack.
- B. capacity management.
- C. error recovery capabilities.
- D. reliability under stress.

Answer: A

NEW QUESTION 115

- (Exam Topic 9)

Which security action should be taken FIRST when computer personnel are terminated from their jobs?

- A. Remove their computer access
- B. Require them to turn in their badge
- C. Conduct an exit interview
- D. Reduce their physical access level to the facility

Answer: A

NEW QUESTION 116

- (Exam Topic 9)

Which one of the following considerations has the LEAST impact when considering transmission security?

- A. Network availability
- B. Data integrity
- C. Network bandwidth
- D. Node locations

Answer: C

NEW QUESTION 118

- (Exam Topic 9)

An advantage of link encryption in a communications network is that it

- A. makes key management and distribution easier.
- B. protects data from start to finish through the entire network.
- C. improves the efficiency of the transmission.
- D. encrypts all information, including headers and routing information.

Answer: D

NEW QUESTION 123

- (Exam Topic 9)

Which of the following is an authentication protocol in which a new random number is generated uniquely for each login session?

- A. Challenge Handshake Authentication Protocol (CHAP)
- B. Point-to-Point Protocol (PPP)
- C. Extensible Authentication Protocol (EAP)
- D. Password Authentication Protocol (PAP)

Answer: A

NEW QUESTION 124

- (Exam Topic 9)

How can a forensic specialist exclude from examination a large percentage of operating system files residing on a copy of the target system?

- A. Take another backup of the media in question then delete all irrelevant operating system files.
- B. Create a comparison database of cryptographic hashes of the files from a system with the same operating system and patch level.
- C. Generate a message digest (MD) or secure hash on the drive image to detect tampering of the media being examined.
- D. Discard harmless files for the operating system, and known installed programs.

Answer: B

NEW QUESTION 126

- (Exam Topic 9)

In a financial institution, who has the responsibility for assigning the classification to a piece of information?

- A. Chief Financial Officer (CFO)
- B. Chief Information Security Officer (CISO)
- C. Originator or nominated owner of the information
- D. Department head responsible for ensuring the protection of the information

Answer: C

NEW QUESTION 128

- (Exam Topic 9)

As one component of a physical security system, an Electronic Access Control (EAC) token is BEST known for its ability to

- A. overcome the problems of key assignments.
- B. monitor the opening of windows and doors.
- C. trigger alarms when intruders are detected.
- D. lock down a facility during an emergency.

Answer: A

NEW QUESTION 133

- (Exam Topic 9)

Which of the following is a strategy of grouping requirements in developing a Security Test and Evaluation (ST&E)?

- A. Standards, policies, and procedures
- B. Tactical, strategic, and financial
- C. Management, operational, and technical
- D. Documentation, observation, and manual

Answer: C

NEW QUESTION 137

- (Exam Topic 9)

Which of the following does the Encapsulating Security Payload (ESP) provide?

- A. Authorization and integrity
- B. Availability and integrity
- C. Integrity and confidentiality
- D. Authorization and confidentiality

Answer: C

NEW QUESTION 141

- (Exam Topic 9)

A practice that permits the owner of a data object to grant other users access to that object would usually provide

- A. Mandatory Access Control (MAC).
- B. owner-administered control.
- C. owner-dependent access control.
- D. Discretionary Access Control (DAC).

Answer: D

NEW QUESTION 144

- (Exam Topic 9)

Which of the following statements is TRUE for point-to-point microwave transmissions?

- A. They are not subject to interception due to encryption.
- B. Interception only depends on signal strength.
- C. They are too highly multiplexed for meaningful interception.
- D. They are subject to interception by an antenna within proximity.

Answer: D

NEW QUESTION 146

- (Exam Topic 9)

Which of the following is the BEST way to verify the integrity of a software patch?

- A. Cryptographic checksums
- B. Version numbering
- C. Automatic updates
- D. Vendor assurance

Answer: A

NEW QUESTION 150

- (Exam Topic 9)

Which one of the following describes granularity?

- A. Maximum number of entries available in an Access Control List (ACL)
- B. Fineness to which a trusted system can authenticate users
- C. Number of violations divided by the number of total accesses
- D. Fineness to which an access control system can be adjusted

Answer:

D

NEW QUESTION 152

- (Exam Topic 9)

Which of the following is the MOST important consideration when storing and processing Personally Identifiable Information (PII)?

- A. Encrypt and hash all PII to avoid disclosure and tampering.
- B. Store PII for no more than one year.
- C. Avoid storing PII in a Cloud Service Provider.
- D. Adherence to collection limitation laws and regulations.

Answer: D

NEW QUESTION 157

- (Exam Topic 9)

Which of the following is a security limitation of File Transfer Protocol (FTP)?

- A. Passive FTP is not compatible with web browsers.
- B. Anonymous access is allowed.
- C. FTP uses Transmission Control Protocol (TCP) ports 20 and 21.
- D. Authentication is not encrypted.

Answer: D

NEW QUESTION 162

- (Exam Topic 9)

In Business Continuity Planning (BCP), what is the importance of documenting business processes?

- A. Provides senior management with decision-making tools
- B. Establishes and adopts ongoing testing and maintenance strategies
- C. Defines who will perform which functions during a disaster or emergency
- D. Provides an understanding of the organization's interdependencies

Answer: D

NEW QUESTION 165

- (Exam Topic 9)

A security consultant has been asked to research an organization's legal obligations to protect privacy-related information. What kind of reading material is MOST relevant to this project?

- A. The organization's current security policies concerning privacy issues
- B. Privacy-related regulations enforced by governing bodies applicable to the organization
- C. Privacy best practices published by recognized security standards organizations
- D. Organizational procedures designed to protect privacy information

Answer: B

NEW QUESTION 167

- (Exam Topic 9)

When transmitting information over public networks, the decision to encrypt it should be based on

- A. the estimated monetary value of the information.
- B. whether there are transient nodes relaying the transmission.
- C. the level of confidentiality of the information.
- D. the volume of the information.

Answer: C

NEW QUESTION 171

- (Exam Topic 9)

Alternate encoding such as hexadecimal representations is MOST often observed in which of the following forms of attack?

- A. Smurf
- B. Rootkit exploit
- C. Denial of Service (DoS)
- D. Cross site scripting (XSS)

Answer: D

NEW QUESTION 175

- (Exam Topic 9)

Which of the following elements MUST a compliant EU-US Safe Harbor Privacy Policy contain?

- A. An Explanation: of how long the data subject's collected information will be retained for and how it will be eventually disposed.
- B. An Explanation: of who can be contacted at the organization collecting the information if corrections are required by the data subject.
- C. An Explanation: of the regulatory frameworks and compliance standards the information collecting organization adheres to.

D. An Explanation: of all the technologies employed by the collecting organization in gathering information on the data subject.

Answer: B

NEW QUESTION 176

- (Exam Topic 9)

In a basic SYN flood attack, what is the attacker attempting to achieve?

- A. Exceed the threshold limit of the connection queue for a given service
- B. Set the threshold to zero for a given service
- C. Cause the buffer to overflow, allowing root access
- D. Flush the register stack, allowing hijacking of the root account

Answer: A

NEW QUESTION 178

- (Exam Topic 9)

Which of the following is a network intrusion detection technique?

- A. Statistical anomaly
- B. Perimeter intrusion
- C. Port scanning
- D. Network spoofing

Answer: A

NEW QUESTION 183

- (Exam Topic 9)

Which of the following is an appropriate source for test data?

- A. Production data that is secured and maintained only in the production environment.
- B. Test data that has no similarities to production data.
- C. Test data that is mirrored and kept up-to-date with production data.
- D. Production data that has been sanitized before loading into a test environment.

Answer: D

NEW QUESTION 184

- (Exam Topic 9)

When implementing controls in a heterogeneous end-point network for an organization, it is critical that

- A. hosts are able to establish network communications.
- B. users can make modifications to their security software configurations.
- C. common software security components be implemented across all hosts.
- D. firewalls running on each host are fully customizable by the user.

Answer: C

NEW QUESTION 186

- (Exam Topic 9)

A software scanner identifies a region within a binary image having high entropy. What does this MOST likely indicate?

- A. Encryption routines
- B. Random number generator
- C. Obfuscated code
- D. Botnet command and control

Answer: C

NEW QUESTION 191

- (Exam Topic 9)

Which of the following is an effective method for avoiding magnetic media data remanence?

- A. Degaussing
- B. Encryption
- C. Data Loss Prevention (DLP)
- D. Authentication

Answer: A

NEW QUESTION 192

- (Exam Topic 9)

Which of the following is a potential risk when a program runs in privileged mode?

- A. It may serve to create unnecessary code complexity

- B. It may not enforce job separation duties
- C. It may create unnecessary application hardening
- D. It may allow malicious code to be inserted

Answer: D

NEW QUESTION 193

- (Exam Topic 9)

Passive Infrared Sensors (PIR) used in a non-climate controlled environment should

- A. reduce the detected object temperature in relation to the background temperature.
- B. increase the detected object temperature in relation to the background temperature.
- C. automatically compensate for variance in background temperature.
- D. detect objects of a specific temperature independent of the background temperature.

Answer: C

NEW QUESTION 197

- (Exam Topic 9)

When constructing an Information Protection Policy (IPP), it is important that the stated rules are necessary, adequate, and

- A. flexible.
- B. confidential.
- C. focused.
- D. achievable.

Answer: D

NEW QUESTION 202

- (Exam Topic 9)

Which of the following **MUST** be done when promoting a security awareness program to senior management?

- A. Show the need for security; identify the message and the audience
- B. Ensure that the security presentation is designed to be all-inclusive
- C. Notify them that their compliance is mandatory
- D. Explain how hackers have enhanced information security

Answer: A

NEW QUESTION 205

- (Exam Topic 9)

An organization is designing a large enterprise-wide document repository system. They plan to have several different classification level areas with increasing levels of controls. The **BEST** way to ensure document confidentiality in the repository is to

- A. encrypt the contents of the repository and document any exceptions to that requirement.
- B. utilize Intrusion Detection System (IDS) set drop connections if too many requests for documents are detected.
- C. keep individuals with access to high security areas from saving those documents into lower security areas.
- D. require individuals with access to the system to sign Non-Disclosure Agreements (NDA).

Answer: C

NEW QUESTION 209

- (Exam Topic 9)

Which of the following does Temporal Key Integrity Protocol (TKIP) support?

- A. Multicast and broadcast messages
- B. Coordination of IEEE 802.11 protocols
- C. Wired Equivalent Privacy (WEP) systems
- D. Synchronization of multiple devices

Answer: C

NEW QUESTION 210

- (Exam Topic 9)

Why must all users be positively identified prior to using multi-user computers?

- A. To provide access to system privileges
- B. To provide access to the operating system
- C. To ensure that unauthorized persons cannot access the computers
- D. To ensure that management knows what users are currently logged on

Answer: C

NEW QUESTION 213

- (Exam Topic 9)

Two companies wish to share electronic inventory and purchase orders in a supplier and client relationship. What is the BEST security solution for them?

- A. Write a Service Level Agreement (SLA) for the two companies.
- B. Set up a Virtual Private Network (VPN) between the two companies.
- C. Configure a firewall at the perimeter of each of the two companies.
- D. Establish a File Transfer Protocol (FTP) connection between the two companies.

Answer: B

NEW QUESTION 217

- (Exam Topic 10)

What is the MAIN feature that onion routing networks offer?

- A. Non-repudiation
- B. Traceability
- C. Anonymity
- D. Resilience

Answer: C

NEW QUESTION 221

- (Exam Topic 10)

Which of the following is a process within a Systems Engineering Life Cycle (SELC) stage?

- A. Requirements Analysis
- B. Development and Deployment
- C. Production Operations
- D. Utilization Support

Answer: A

NEW QUESTION 223

- (Exam Topic 10)

Refer to the information below to answer the question.

A new employee is given a laptop computer with full administrator access. This employee does not have a personal computer at home and has a child that uses the computer to send and receive e-mail, search the web, and use instant messaging. The organization's Information Technology (IT) department discovers that a peer-to-peer program has been installed on the computer using the employee's access.

Which of the following solutions would have MOST likely detected the use of peer-to-peer programs when the computer was connected to the office network?

- A. Anti-virus software
- B. Intrusion Prevention System (IPS)
- C. Anti-spyware software
- D. Integrity checking software

Answer: B

NEW QUESTION 227

- (Exam Topic 10)

Refer to the information below to answer the question.

A large, multinational organization has decided to outsource a portion of their Information Technology (IT) organization to a third-party provider's facility. This provider will be responsible for the design, development, testing, and support of several critical, customer-based applications used by the organization.

The organization should ensure that the third party's physical security controls are in place so that they

- A. are more rigorous than the original controls.
- B. are able to limit access to sensitive information.
- C. allow access by the organization staff at any time.
- D. cannot be accessed by subcontractors of the third party.

Answer: B

NEW QUESTION 232

- (Exam Topic 10)

Which of the following provides effective management assurance for a Wireless Local Area Network (WLAN)?

- A. Maintaining an inventory of authorized Access Points (AP) and connecting devices
- B. Setting the radio frequency to the minimum range required
- C. Establishing a Virtual Private Network (VPN) tunnel between the WLAN client device and a VPN concentrator
- D. Verifying that all default passwords have been changed

Answer: A

NEW QUESTION 233

- (Exam Topic 10)

Refer to the information below to answer the question.

In a Multilevel Security (MLS) system, the following sensitivity labels are used in increasing levels of sensitivity: restricted, confidential, secret, top secret. Table A lists the clearance levels for four users, while Table B lists the security classes of four different files.

Table A

User	Clearance Level
A	Restricted
B	Confidential
C	Secret
D	Top Secret

Table B

Files	Security Class
1	Restricted
2	Confidential
3	Secret
4	Top Secret

Which of the following is true according to the star property (*property)?

- A. User D can write to File 1
- B. User B can write to File 1
- C. User A can write to File 1
- D. User C can write to File 1

Answer: C

NEW QUESTION 234

- (Exam Topic 10)

According to best practice, which of the following groups is the MOST effective in performing an information security compliance audit?

- A. In-house security administrators
- B. In-house Network Team
- C. Disaster Recovery (DR) Team
- D. External consultants

Answer: D

NEW QUESTION 237

- (Exam Topic 10)

An online retail company has formulated a record retention schedule for customer transactions. Which of the following is a valid reason a customer transaction is kept beyond the retention schedule?

- A. Pending legal hold
- B. Long term data mining needs
- C. Customer makes request to retain
- D. Useful for future business initiatives

Answer: A

NEW QUESTION 242

- (Exam Topic 10)

What does secure authentication with logging provide?

- A. Data integrity
- B. Access accountability
- C. Encryption logging format
- D. Segregation of duties

Answer: B

NEW QUESTION 244

- (Exam Topic 10)

Refer to the information below to answer the question.

A security practitioner detects client-based attacks on the organization's network. A plan will be necessary to address these concerns.

In addition to web browsers, what PRIMARY areas need to be addressed concerning mobile code used for malicious purposes?

- A. Text editors, database, and Internet phone applications
- B. Email, presentation, and database applications
- C. Image libraries, presentation and spreadsheet applications
- D. Email, media players, and instant messaging applications

Answer: D

NEW QUESTION 245

- (Exam Topic 10)

Which of the following assures that rules are followed in an identity management architecture?

- A. Policy database
- B. Digital signature
- C. Policy decision point
- D. Policy enforcement point

Answer: D

NEW QUESTION 248

- (Exam Topic 10)

Refer to the information below to answer the question.

A security practitioner detects client-based attacks on the organization's network. A plan will be necessary to address these concerns.

What **MUST** the plan include in order to reduce client-side exploitation?

- A. Approved web browsers
- B. Network firewall procedures
- C. Proxy configuration
- D. Employee education

Answer: D

NEW QUESTION 249

- (Exam Topic 10)

What is the **MOST** effective method for gaining unauthorized access to a file protected with a long complex password?

- A. Brute force attack
- B. Frequency analysis
- C. Social engineering
- D. Dictionary attack

Answer: C

NEW QUESTION 251

- (Exam Topic 10)

Multi-Factor Authentication (MFA) is necessary in many systems given common types of password attacks. Which of the following is a correct list of password attacks?

- A. Masquerading, salami, malware, polymorphism
- B. Brute force, dictionary, phishing, keylogger
- C. Zeus, netbus, rabbit, turtle
- D. Token, biometrics, IDS, DLP

Answer: B

NEW QUESTION 252

- (Exam Topic 10)

Which of the following are required components for implementing software configuration management systems?

- A. Audit control and signoff
- B. User training and acceptance
- C. Rollback and recovery processes
- D. Regression testing and evaluation

Answer: C

NEW QUESTION 253

- (Exam Topic 10)

Which of the following is required to determine classification and ownership?

- A. System and data resources are properly identified
- B. Access violations are logged and audited
- C. Data file references are identified and linked
- D. System security controls are fully integrated

Answer: A

NEW QUESTION 257

- (Exam Topic 10)

What component of a web application that stores the session state in a cookie can be bypassed by an attacker?

- A. An initialization check
- B. An identification check
- C. An authentication check
- D. An authorization check

Answer: C

NEW QUESTION 259

- (Exam Topic 10)

A business has implemented Payment Card Industry Data Security Standard (PCI-DSS) compliant handheld credit card processing on their Wireless Local Area Network (WLAN) topology. The network team partitioned the WLAN to create a private segment for credit card processing using a firewall to control device access and route traffic to the card processor on the Internet. What components are in the scope of PCI-DSS?

- A. The entire enterprise network infrastructure.
- B. The handheld devices, wireless access points and border gateway.

- C. The end devices, wireless access points, WLAN, switches, management console, and firewall.
- D. The end devices, wireless access points, WLAN, switches, management console, and Internet

Answer: C

NEW QUESTION 264

- (Exam Topic 10)

Refer to the information below to answer the question.

During the investigation of a security incident, it is determined that an unauthorized individual accessed a system which hosts a database containing financial information.

If the intrusion causes the system processes to hang, which of the following has been affected?

- A. System integrity
- B. System availability
- C. System confidentiality
- D. System auditability

Answer: B

NEW QUESTION 266

- (Exam Topic 10)

Which of the following methods provides the MOST protection for user credentials?

- A. Forms-based authentication
- B. Digest authentication
- C. Basic authentication
- D. Self-registration

Answer: B

NEW QUESTION 267

- (Exam Topic 10)

Which of the following is a MAJOR consideration in implementing a Voice over IP (VoIP) network?

- A. Use of a unified messaging.
- B. Use of separation for the voice network.
- C. Use of Network Access Control (NAC) on switches.
- D. Use of Request for Comments (RFC) 1918 addressing.

Answer: B

NEW QUESTION 272

- (Exam Topic 10)

Refer to the information below to answer the question.

A new employee is given a laptop computer with full administrator access. This employee does not have a personal computer at home and has a child that uses the computer to send and receive e-mail, search the web, and use instant messaging. The organization's Information Technology (IT) department discovers that a peer-to-peer program has been installed on the computer using the employee's access.

Which of the following documents explains the proper use of the organization's assets?

- A. Human resources policy
- B. Acceptable use policy
- C. Code of ethics
- D. Access control policy

Answer: B

NEW QUESTION 273

- (Exam Topic 10)

Which of the following is a critical factor for implementing a successful data classification program?

- A. Executive sponsorship
- B. Information security sponsorship
- C. End-user acceptance
- D. Internal audit acceptance

Answer: A

NEW QUESTION 278

- (Exam Topic 10)

Which of the following is the BEST solution to provide redundancy for telecommunications links?

- A. Provide multiple links from the same telecommunications vendor.
- B. Ensure that the telecommunications links connect to the network in one location.
- C. Ensure that the telecommunications links connect to the network in multiple locations.
- D. Provide multiple links from multiple telecommunications vendors.

Answer: D

NEW QUESTION 279

- (Exam Topic 10)

Which of the following actions **MUST** be taken if a vulnerability is discovered during the maintenance stage in a System Development Life Cycle (SDLC)?

- A. Make changes following principle and design guidelines.
- B. Stop the application until the vulnerability is fixed.
- C. Report the vulnerability to product owner.
- D. Monitor the application and review code.

Answer: C

NEW QUESTION 282

- (Exam Topic 10)

Refer to the information below to answer the question.

A security practitioner detects client-based attacks on the organization's network. A plan will be necessary to address these concerns.

In the plan, what is the **BEST** approach to mitigate future internal client-based attacks?

- A. Block all client side web exploits at the perimeter.
- B. Remove all non-essential client-side web services from the network.
- C. Screen for harmful exploits of client-side services before implementation.
- D. Harden the client image before deployment.

Answer: D

NEW QUESTION 285

- (Exam Topic 10)

When is security personnel involvement in the Systems Development Life Cycle (SDLC) process **MOST** beneficial?

- A. Testing phase
- B. Development phase
- C. Requirements definition phase
- D. Operations and maintenance phase

Answer: C

NEW QUESTION 290

- (Exam Topic 10)

With data labeling, which of the following **MUST** be the key decision maker?

- A. Information security
- B. Departmental management
- C. Data custodian
- D. Data owner

Answer: D

NEW QUESTION 292

- (Exam Topic 10)

Refer to the information below to answer the question.

An organization experiencing a negative financial impact is forced to reduce budgets and the number of Information Technology (IT) operations staff performing basic logical access security administration functions. Security processes have been tightly integrated into normal IT operations and are not separate and distinct roles.

Which of the following will **MOST** likely allow the organization to keep risk at an acceptable level?

- A. Increasing the amount of audits performed by third parties
- B. Removing privileged accounts from operational staff
- C. Assigning privileged functions to appropriate staff
- D. Separating the security function into distinct roles

Answer: C

NEW QUESTION 296

- (Exam Topic 10)

A system is developed so that its business users can perform business functions but not user administration functions. Application administrators can perform administration functions but not user business functions. These capabilities are **BEST** described as

- A. least privilege.
- B. rule based access controls.
- C. Mandatory Access Control (MAC).
- D. separation of duties.

Answer: D

NEW QUESTION 300

- (Exam Topic 10)

Refer to the information below to answer the question.

An organization has hired an information security officer to lead their security department. The officer has adequate people resources but is lacking the other necessary components to have an effective security program. There are numerous initiatives requiring security involvement. Given the number of priorities, which of the following will MOST likely influence the selection of top initiatives?

- A. Severity of risk
- B. Complexity of strategy
- C. Frequency of incidents
- D. Ongoing awareness

Answer: A

NEW QUESTION 305

- (Exam Topic 10)

Refer to the information below to answer the question.

A new employee is given a laptop computer with full administrator access. This employee does not have a personal computer at home and has a child that uses the computer to send and receive e-mail, search the web, and use instant messaging. The organization's Information Technology (IT) department discovers that a peer-to-peer program has been installed on the computer using the employee's access.

Which of the following methods is the MOST effective way of removing the Peer-to-Peer (P2P) program from the computer?

- A. Run software uninstall
- B. Re-image the computer
- C. Find and remove all installation files
- D. Delete all cookies stored in the web browser cache

Answer: B

NEW QUESTION 309

- (Exam Topic 10)

Refer to the information below to answer the question.

A security practitioner detects client-based attacks on the organization's network. A plan will be necessary to address these concerns.

What is the BEST reason for the organization to pursue a plan to mitigate client-based attacks?

- A. Client privilege administration is inherently weaker than server privilege administration.
- B. Client hardening and management is easier on clients than on servers.
- C. Client-based attacks are more common and easier to exploit than server and network based attacks.
- D. Client-based attacks have higher financial impact.

Answer: C

NEW QUESTION 314

- (Exam Topic 10)

Refer to the information below to answer the question.

In a Multilevel Security (MLS) system, the following sensitivity labels are used in increasing levels of sensitivity: restricted, confidential, secret, top secret. Table A lists the clearance levels for four users, while Table B lists the security classes of four different files.

Table A

User	Clearance Level
A	Restricted
B	Confidential
C	Secret
D	Top Secret

Table B

Files	Security Class
1	Restricted
2	Confidential
3	Secret
4	Top Secret

In a Bell-LaPadula system, which user has the MOST restrictions when writing data to any of the four files?

- A. User A
- B. User B
- C. User C
- D. User D

Answer: D

NEW QUESTION 317

- (Exam Topic 10)

Refer to the information below to answer the question.

Desktop computers in an organization were sanitized for re-use in an equivalent security environment. The data was destroyed in accordance with organizational policy and all marking and other external indications of the sensitivity of the data that was formerly stored on the magnetic drives were removed.

After magnetic drives were degaussed twice according to the product manufacturer's directions, what is the MOST LIKELY security issue with degaussing?

- A. Commercial products often have serious weaknesses of the magnetic force available in the degausser product.
- B. Degausser products may not be properly maintained and operated.
- C. The inability to turn the drive around in the chamber for the second pass due to human error.
- D. Inadequate record keeping when sanitizing media.

Answer: B

NEW QUESTION 321

- (Exam Topic 10)

For a service provider, which of the following MOST effectively addresses confidentiality concerns for customers using cloud computing?

- A. Hash functions
- B. Data segregation
- C. File system permissions
- D. Non-repudiation controls

Answer: B

NEW QUESTION 325

- (Exam Topic 10)

Which of the following secure startup mechanisms are PRIMARILY designed to thwart attacks?

- A. Timing
- B. Cold boot
- C. Side channel
- D. Acoustic cryptanalysis

Answer: B

NEW QUESTION 327

- (Exam Topic 10)

Without proper signal protection, embedded systems may be prone to which type of attack?

- A. Brute force
- B. Tampering
- C. Information disclosure
- D. Denial of Service (DoS)

Answer: C

NEW QUESTION 328

- (Exam Topic 10)

Refer to the information below to answer the question.

An organization experiencing a negative financial impact is forced to reduce budgets and the number of Information Technology (IT) operations staff performing basic logical access security administration functions. Security processes have been tightly integrated into normal IT operations and are not separate and distinct roles.

When determining appropriate resource allocation, which of the following is MOST important to monitor?

- A. Number of system compromises
- B. Number of audit findings
- C. Number of staff reductions
- D. Number of additional assets

Answer: B

NEW QUESTION 332

- (Exam Topic 10)

Which of the following is the BEST way to determine if a particular system is able to identify malicious software without executing it?

- A. Testing with a Botnet
- B. Testing with an EICAR file
- C. Executing a binary shellcode
- D. Run multiple antivirus programs

Answer: B

NEW QUESTION 337

- (Exam Topic 10)

Which of the following is the PRIMARY benefit of a formalized information classification program?

- A. It drives audit processes.
- B. It supports risk assessment.
- C. It reduces asset vulnerabilities.
- D. It minimizes system logging requirements.

Answer: B

NEW QUESTION 342

- (Exam Topic 10)

A risk assessment report recommends upgrading all perimeter firewalls to mitigate a particular finding. Which of the following BEST supports this recommendation?

- A. The inherent risk is greater than the residual risk.
- B. The Annualized Loss Expectancy (ALE) approaches zero.
- C. The expected loss from the risk exceeds mitigation costs.

D. The infrastructure budget can easily cover the upgrade costs.

Answer: C

NEW QUESTION 346

- (Exam Topic 10)

A thorough review of an organization's audit logs finds that a disgruntled network administrator has intercepted emails meant for the Chief Executive Officer (CEO) and changed them before forwarding them to their intended recipient. What type of attack has MOST likely occurred?

- A. Spoofing
- B. Eavesdropping
- C. Man-in-the-middle
- D. Denial of service

Answer: C

NEW QUESTION 348

- (Exam Topic 10)

What is the MOST important reason to configure unique user IDs?

- A. Supporting accountability
- B. Reducing authentication errors
- C. Preventing password compromise
- D. Supporting Single Sign On (SSO)

Answer: A

NEW QUESTION 353

- (Exam Topic 10)

Refer to the information below to answer the question.

During the investigation of a security incident, it is determined that an unauthorized individual accessed a system which hosts a database containing financial information.

Aside from the potential records which may have been viewed, which of the following should be the PRIMARY concern regarding the database information?

- A. Unauthorized database changes
- B. Integrity of security logs
- C. Availability of the database
- D. Confidentiality of the incident

Answer: A

NEW QUESTION 358

- (Exam Topic 11)

What is the process called when impact values are assigned to the security objectives for information types?

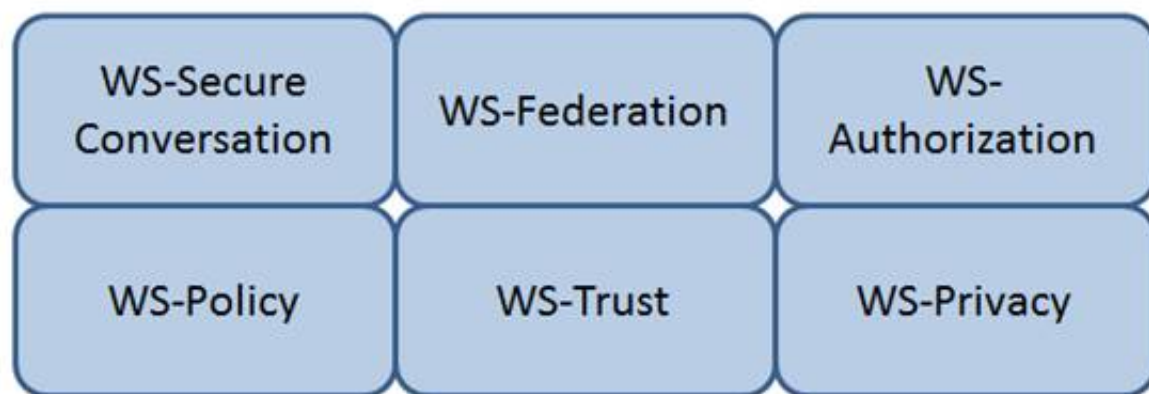
- A. Qualitative analysis
- B. Quantitative analysis
- C. Remediation
- D. System security categorization

Answer: D

NEW QUESTION 363

- (Exam Topic 11)

Which Web Services Security (WS-Security) specification handles the management of security tokens and the underlying policies for granting access? Click on the correct specification in the image below.



- A. Mastered
- B. Not Mastered

Answer: A

Explanation:

WS-Authorization

Reference: Java Web Services: Up and Running" By Martin Kalin page 228

NEW QUESTION 366

- (Exam Topic 11)

Which of the following prevents improper aggregation of privileges in Role Based Access Control (RBAC)?

- A. Hierarchical inheritance
- B. Dynamic separation of duties
- C. The Clark-Wilson security model
- D. The Bell-LaPadula security model

Answer: B

NEW QUESTION 369

- (Exam Topic 11)

A health care provider is considering Internet access for their employees and patients. Which of the following is the organization's MOST secure solution for protection of data?

- A. Public Key Infrastructure (PKI) and digital signatures
- B. Trusted server certificates and passphrases
- C. User ID and password
- D. Asymmetric encryption and User ID

Answer: A

NEW QUESTION 372

- (Exam Topic 11)

If an identification process using a biometric system detects a 100% match between a presented template and a stored template, what is the interpretation of this result?

- A. User error
- B. Suspected tampering
- C. Accurate identification
- D. Unsuccessful identification

Answer: B

NEW QUESTION 377

- (Exam Topic 11)

Which of the following is a function of Security Assertion Markup Language (SAML)?

- A. File allocation
- B. Redundancy check
- C. Extended validation
- D. Policy enforcement

Answer: D

NEW QUESTION 378

- (Exam Topic 11)

Order the below steps to create an effective vulnerability management process.

Step		Order
Identify risks		1
Implement patch deployment		2
Implement recurring scanning schedule		3
Identify assets		4
Implement change management		5

- A. Mastered
- B. Not Mastered

Answer: A

Explanation:

Step		Order
Identify risks	Identify assets	1
Implement patch deployment	Identify risks	2
Implement recurring scanning schedule	Implement change management	3
Identify assets	Implement patch deployment	4
Implement change management	Implement recurring scanning schedule	5

NEW QUESTION 379

- (Exam Topic 11)

Which of the following is a reason to use manual patch installation instead of automated patch management?

- A. The cost required to install patches will be reduced.
- B. The time during which systems will remain vulnerable to an exploit will be decreased.
- C. The likelihood of system or application incompatibilities will be decreased.
- D. The ability to cover large geographic areas is increased.

Answer: C

NEW QUESTION 380

- (Exam Topic 11)

A mobile device application that restricts the storage of user information to just that which is needed to accomplish lawful business goals adheres to what privacy principle?

- A. Onward transfer
- B. Collection Limitation
- C. Collector Accountability
- D. Individual Participation

Answer: B

NEW QUESTION 382

- (Exam Topic 11)

Which of the following PRIMARILY contributes to security incidents in web-based applications?

- A. Systems administration and operating systems
- B. System incompatibility and patch management
- C. Third-party applications and change controls
- D. Improper stress testing and application interfaces

Answer: C

NEW QUESTION 387

- (Exam Topic 11)

Which of the following analyses is performed to protect information assets?

- A. Business impact analysis
- B. Feasibility analysis
- C. Cost benefit analysis
- D. Data analysis

Answer: A

NEW QUESTION 389

- (Exam Topic 11)

Which of the following is the MOST likely cause of a non-malicious data breach when the source of the data breach was an un-marked file cabinet containing sensitive documents?

- A. Ineffective data classification
- B. Lack of data access controls
- C. Ineffective identity management controls
- D. Lack of Data Loss Prevention (DLP) tools

Answer: A

NEW QUESTION 390

- (Exam Topic 11)

Which of the following disaster recovery test plans will be MOST effective while providing minimal risk?

- A. Read-through
- B. Parallel
- C. Full interruption
- D. Simulation

Answer: B

NEW QUESTION 393

- (Exam Topic 11)

Single Sign-On (SSO) is PRIMARILY designed to address which of the following?

- A. Confidentiality and Integrity
- B. Availability and Accountability
- C. Integrity and Availability
- D. Accountability and Assurance

Answer: D

NEW QUESTION 395

- (Exam Topic 11)

Which security approach will BEST minimize Personally Identifiable Information (PII) loss from a data breach?

- A. A strong breach notification process
- B. Limited collection of individuals' confidential data
- C. End-to-end data encryption for data in transit
- D. Continuous monitoring of potential vulnerabilities

Answer: B

NEW QUESTION 399

- (Exam Topic 11)

An organization lacks a data retention policy. Of the following, who is the BEST person to consult for such requirement?

- A. Application Manager
- B. Database Administrator
- C. Privacy Officer
- D. Finance Manager

Answer: C

NEW QUESTION 404

- (Exam Topic 11)

The World Trade Organization's (WTO) agreement on Trade-Related Aspects of Intellectual Property Rights (TRIPS) requires authors of computer software to be given the

- A. right to refuse or permit commercial rentals.
- B. right to disguise the software's geographic origin.
- C. ability to tailor security parameters based on location.
- D. ability to confirm license authenticity of their works.

Answer: A

NEW QUESTION 407

- (Exam Topic 11)

During a fingerprint verification process, which of the following is used to verify identity and authentication?

- A. A pressure value is compared with a stored template
- B. Sets of digits are matched with stored values
- C. A hash table is matched to a database of stored value
- D. A template of minutiae is compared with a stored template

Answer: D

NEW QUESTION 409

- (Exam Topic 11)

How does Encapsulating Security Payload (ESP) in transport mode affect the Internet Protocol (IP)?

- A. Encrypts and optionally authenticates the IP header, but not the IP payload
- B. Encrypts and optionally authenticates the IP payload, but not the IP header
- C. Authenticates the IP payload and selected portions of the IP header
- D. Encrypts and optionally authenticates the complete IP packet

Answer: B

NEW QUESTION 413

- (Exam Topic 11)

When planning a penetration test, the tester will be MOST interested in which information?

- A. Places to install back doors
- B. The main network access points
- C. Job application handouts and tours
- D. Exploits that can attack weaknesses

Answer: B

NEW QUESTION 415

- (Exam Topic 11)

Which of the following command line tools can be used in the reconnaissance phase of a network vulnerability assessment?

- A. dig
- B. ifconfig
- C. ipconfig
- D. nbtstat

Answer: A

NEW QUESTION 420

- (Exam Topic 11)

Which of the following BEST describes a rogue Access Point (AP)?

- A. An AP that is not protected by a firewall
- B. An AP not configured to use Wired Equivalent Privacy (WEP) with Triple Data Encryption Algorithm (3DES)
- C. An AP connected to the wired infrastructure but not under the management of authorized network administrators
- D. An AP infected by any kind of Trojan or Malware

Answer: C

NEW QUESTION 424

- (Exam Topic 11)

Which of the following describes the BEST configuration management practice?

- A. After installing a new system, the configuration files are copied to a separate back-up system and hashed to detect tampering.
- B. After installing a new system, the configuration files are copied to an air-gapped system and hashed to detect tampering.

- C. The firewall rules are backed up to an air-gapped system.
D. A baseline configuration is created and maintained for all relevant systems.

Answer: D

NEW QUESTION 428

- (Exam Topic 11)

Which of the following is the PRIMARY security concern associated with the implementation of smart cards?

- A. The cards have limited memory
B. Vendor application compatibility
C. The cards can be misplaced
D. Mobile code can be embedded in the card

Answer: C

NEW QUESTION 432

- (Exam Topic 11)

A software security engineer is developing a black box-based test plan that will measure the system's reaction to incorrect or illegal inputs or unexpected operational errors and situations. Match the functional testing techniques on the left with the correct input parameters on the right.

Functional Testing Techniques		Input Parameter Selection
State-Based Analysis		Select one input that does not belong to any of the identified partitions.
Equivalence Class Analysis		Select inputs that are at the external limits of the domain of valid values.
Decision Table Analysis		Select invalid combinations of input values.
Boundary Value Analysis		Select unexpected inputs corresponding to each known condition.

- A. Mastered
B. Not Mastered

Answer: A

Explanation:

Functional Testing Techniques		Input Parameter Selection
State-Based Analysis	Equivalence Class Analysis	Select one input that does not belong to any of the identified partitions.
Equivalence Class Analysis	Boundary Value Analysis	Select inputs that are at the external limits of the domain of valid values.
Decision Table Analysis	Decision Table Analysis	Select invalid combinations of input values.
Boundary Value Analysis	State-Based Analysis	Select unexpected inputs corresponding to each known condition.

NEW QUESTION 437

- (Exam Topic 11)

Retaining system logs for six months or longer can be valuable for what activities?

- A. Disaster recovery and business continuity
- B. Forensics and incident response
- C. Identity and authorization management
- D. Physical and logical access control

Answer: B

NEW QUESTION 438

- (Exam Topic 11)

Which of the following explains why record destruction requirements are included in a data retention policy?

- A. To comply with legal and business requirements
- B. To save cost for storage and backup
- C. To meet destruction guidelines
- D. To validate data ownership

Answer: A

NEW QUESTION 441

- (Exam Topic 11)

What type of encryption is used to protect sensitive data in transit over a network?

- A. Payload encryption and transport encryption
- B. Authentication Headers (AH)
- C. Keyed-Hashing for Message Authentication
- D. Point-to-Point Encryption (P2PE)

Answer: A

NEW QUESTION 443

- (Exam Topic 11)

An organization has developed a major application that has undergone accreditation testing. After receiving the results of the evaluation, what is the final step before the application can be accredited?

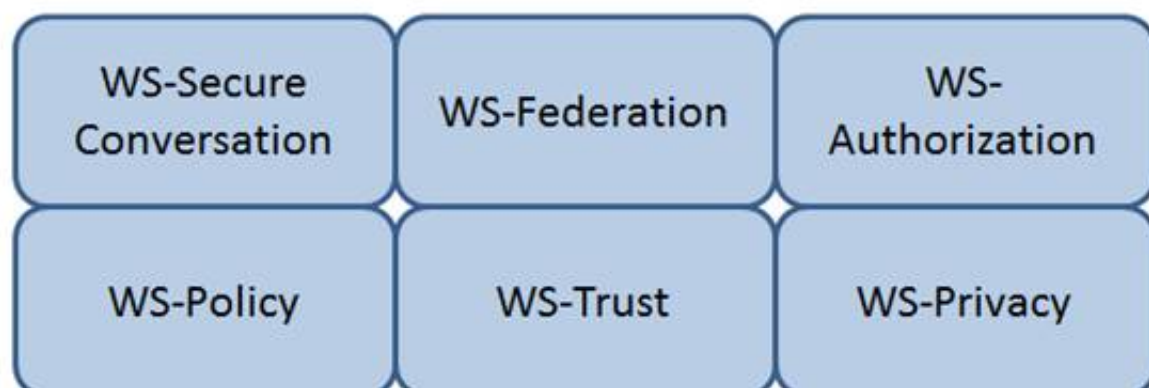
- A. Acceptance of risk by the authorizing official
- B. Remediation of vulnerabilities
- C. Adoption of standardized policies and procedures
- D. Approval of the System Security Plan (SSP)

Answer: A

NEW QUESTION 445

- (Exam Topic 11)

Which Web Services Security (WS-Security) specification maintains a single authenticated identity across multiple dissimilar environments? Click on the correct specification in the image below.



- A. Mastered
- B. Not Mastered

Answer: A

Explanation:

WS-Federation

Reference: Java Web Services: Up and Running" By Martin Kalin page 228

NEW QUESTION 450

- (Exam Topic 11)

Software Code signing is used as a method of verifying what security concept?

- A. Integrity
- B. Confidentiality
- C. Availability
- D. Access Control

Answer: A

NEW QUESTION 455

- (Exam Topic 11)

Data leakage of sensitive information is MOST often concealed by which of the following?

- A. Secure Sockets Layer (SSL)
- B. Secure Hash Algorithm (SHA)
- C. Wired Equivalent Privacy (WEP)
- D. Secure Post Office Protocol (POP)

Answer: A

NEW QUESTION 457

- (Exam Topic 11)

The goal of a Business Continuity Plan (BCP) training and awareness program is to

- A. enhance the skills required to create, maintain, and execute the plan.
- B. provide for a high level of recovery in case of disaster.
- C. describe the recovery organization to new employees.
- D. provide each recovery team with checklists and procedures.

Answer: A

NEW QUESTION 462

- (Exam Topic 11)

Place in order, from BEST (1) to WORST (4), the following methods to reduce the risk of data remanence on magnetic media.

Sequence		Method
1		Overwriting
2		Degaussing
3		Destruction
4		Deleting

- A. Mastered
- B. Not Mastered

Answer: A

Explanation:

Sequence		Method
1	3	Overwriting
2	2	Degaussing
3	1	Destruction
4	4	Deleting

NEW QUESTION 467

- (Exam Topic 11)

Which one of the following operates at the session, transport, or network layer of the Open System Interconnection (OSI) model?

- A. Data at rest encryption

- B. Configuration Management
- C. Integrity checking software
- D. Cyclic redundancy check (CRC)

Answer: D

NEW QUESTION 470

- (Exam Topic 11)

What is the PRIMARY goal for using Domain Name System Security Extensions (DNSSEC) to sign records?

- A. Integrity
- B. Confidentiality
- C. Accountability
- D. Availability

Answer: A

NEW QUESTION 475

- (Exam Topic 11)

A network scan found 50% of the systems with one or more critical vulnerabilities. Which of the following represents the BEST action?

- A. Assess vulnerability risk and program effectiveness.
- B. Assess vulnerability risk and business impact.
- C. Disconnect all systems with critical vulnerabilities.
- D. Disconnect systems with the most number of vulnerabilities.

Answer: B

NEW QUESTION 479

- (Exam Topic 11)

What is the GREATEST challenge of an agent-based patch management solution?

- A. Time to gather vulnerability information about the computers in the program
- B. Requires that software be installed, running, and managed on all participating computers
- C. The significant amount of network bandwidth while scanning computers
- D. The consistency of distributing patches to each participating computer

Answer: B

NEW QUESTION 481

- (Exam Topic 11)

A Simple Power Analysis (SPA) attack against a device directly observes which of the following?

- A. Static discharge
- B. Consumption
- C. Generation
- D. Magnetism

Answer: B

NEW QUESTION 486

- (Exam Topic 11)

In the Open System Interconnection (OSI) model, which layer is responsible for the transmission of binary data over a communications network?

- A. Application Layer
- B. Physical Layer
- C. Data-Link Layer
- D. Network Layer

Answer: B

NEW QUESTION 488

- (Exam Topic 11)

Which of the following secures web transactions at the Transport Layer?

- A. Secure HyperText Transfer Protocol (S-HTTP)
- B. Secure Sockets Layer (SSL)
- C. Socket Security (SOCKS)
- D. Secure Shell (SSH)

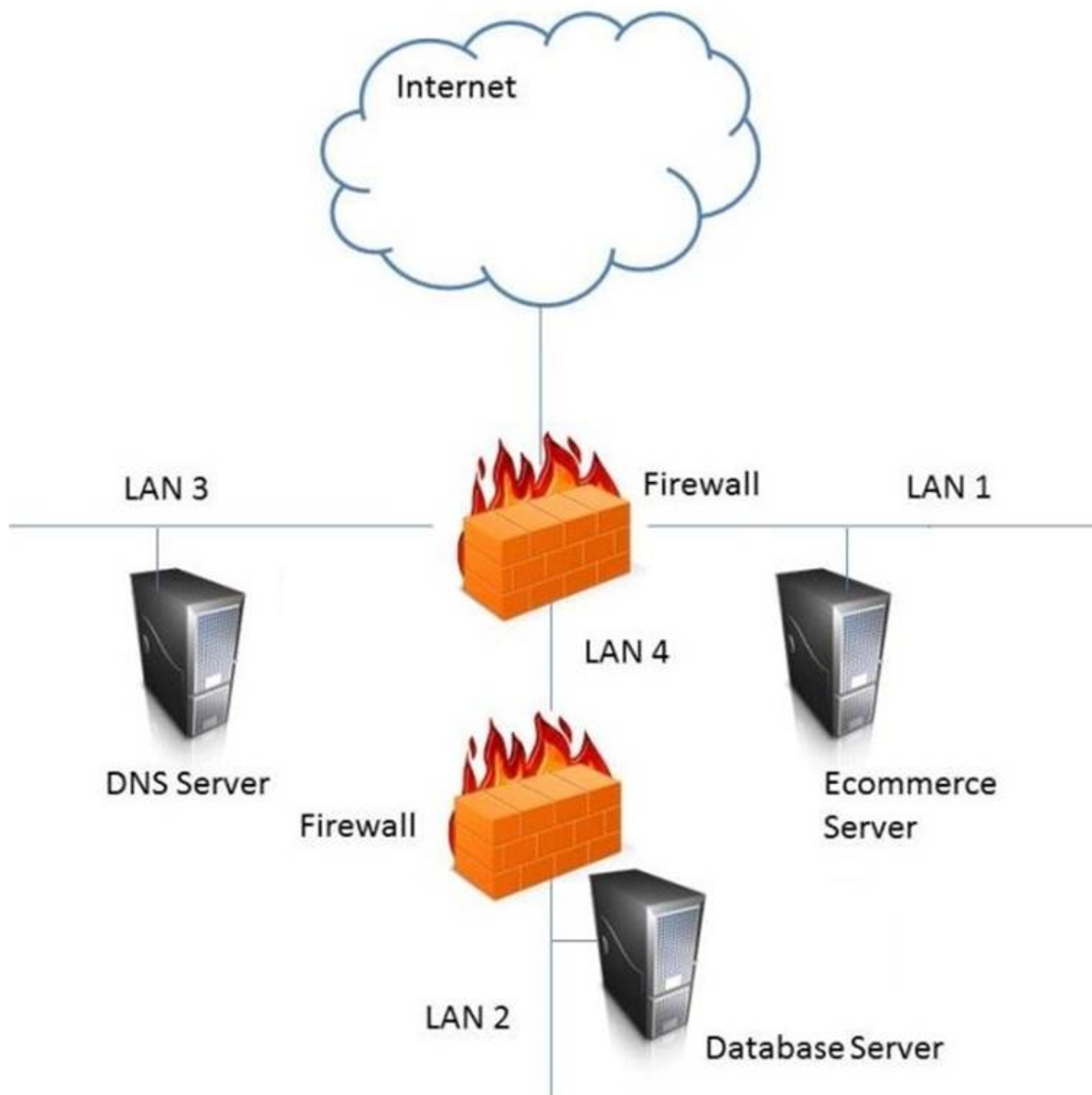
Answer: B

NEW QUESTION 491

- (Exam Topic 11)

In the network design below, where is the MOST secure Local Area Network (LAN) segment to deploy a Wireless Access Point (WAP) that provides contractors

access to the Internet and authorized enterprise services?



- A. Mastered
- B. Not Mastered

Answer: A

Explanation:
 LAN 4

NEW QUESTION 494

- (Exam Topic 11)

Which of the following is the PRIMARY benefit of implementing data-in-use controls?

- A. If the data is lost, it must be decrypted to be opened.
- B. If the data is lost, it will not be accessible to unauthorized users.
- C. When the data is being viewed, it can only be printed by authorized users.
- D. When the data is being viewed, it must be accessed using secure protocols.

Answer: C

NEW QUESTION 499

- (Exam Topic 11)

Which of the following provides the minimum set of privileges required to perform a job function and restricts the user to a domain with the required privileges?

- A. Access based on rules
- B. Access based on user's role
- C. Access determined by the system
- D. Access based on data sensitivity

Answer: B

NEW QUESTION 502

- (Exam Topic 12)

As a best practice, the Security Assessment Report (SAR) should include which of the following sections?

- A. Data classification policy
- B. Software and hardware inventory
- C. Remediation recommendations
- D. Names of participants

Answer: B

NEW QUESTION 505

- (Exam Topic 12)

What is the difference between media marking and media labeling?

- A. Media marking refers to the use of human-readable security attributes, while media labeling refers to the use of security attributes in internal data structures.
- B. Media labeling refers to the use of human-readable security attributes, while media marking refers to the use of security attributes in internal data structures.
- C. Media labeling refers to security attributes required by public policy/law, while media marking refers to security required by internal organizational policy.
- D. Media marking refers to security attributes required by public policy/law, while media labeling refers to security attributes required by internal organizational policy.

Answer: D

NEW QUESTION 508

- (Exam Topic 12)

An Intrusion Detection System (IDS) has recently been deployed in a Demilitarized Zone (DMZ). The IDS detects a flood of malformed packets. Which of the following BEST describes what has occurred?

- A. Denial of Service (DoS) attack
- B. Address Resolution Protocol (ARP) spoof
- C. Buffer overflow
- D. Ping flood attack

Answer: A

NEW QUESTION 510

- (Exam Topic 12)

A company has decided that they need to begin maintaining assets deployed in the enterprise. What approach should be followed to determine and maintain ownership information to bring the company into compliance?

- A. Enterprise asset management framework
- B. Asset baseline using commercial off the shelf software
- C. Asset ownership database using domain login records
- D. A script to report active user logins on assets

Answer: A

NEW QUESTION 512

- (Exam Topic 12)

Which of the following is the MAIN reason for using configuration management?

- A. To provide centralized administration
- B. To reduce the number of changes
- C. To reduce errors during upgrades
- D. To provide consistency in security controls

Answer: D

NEW QUESTION 516

- (Exam Topic 12)

Which of the following is MOST important when deploying digital certificates?

- A. Validate compliance with X.509 digital certificate standards
- B. Establish a certificate life cycle management framework
- C. Use a third-party Certificate Authority (CA)
- D. Use no less than 256-bit strength encryption when creating a certificate

Answer: B

NEW QUESTION 517

- (Exam Topic 12)

Which type of security testing is being performed when an ethical hacker has no knowledge about the target system but the testing target is notified before the test?

- A. Reversal
- B. Gray box
- C. Blind

D. White box

Answer: B

NEW QUESTION 521

- (Exam Topic 12)

Which of the following BEST describes a chosen plaintext attack?

- A. The cryptanalyst can generate ciphertext from arbitrary text.
- B. The cryptanalyst examines the communication being sent back and forth.
- C. The cryptanalyst can choose the key and algorithm to mount the attack.
- D. The cryptanalyst is presented with the ciphertext from which the original message is determined.

Answer: A

NEW QUESTION 522

- (Exam Topic 12)

Determining outage costs caused by a disaster can BEST be measured by the

- A. cost of redundant systems and backups.
- B. cost to recover from an outage.
- C. overall long-term impact of the outage.
- D. revenue lost during the outage.

Answer: C

NEW QUESTION 525

- (Exam Topic 12)

Although code using a specific program language may not be susceptible to a buffer overflow attack,

- A. most calls to plug-in programs are susceptible.
- B. most supporting application code is susceptible.
- C. the graphical images used by the application could be susceptible.
- D. the supporting virtual machine could be susceptible.

Answer: C

NEW QUESTION 529

- (Exam Topic 12)

At which layer of the Open Systems Interconnect (OSI) model are the source and destination address for a datagram handled?

- A. Transport Layer
- B. Data-Link Layer
- C. Network Layer
- D. Application Layer

Answer: C

NEW QUESTION 532

- (Exam Topic 12)

When writing security assessment procedures, what is the MAIN purpose of the test outputs and reports?

- A. To force the software to fail and document the process
- B. To find areas of compromise in confidentiality and integrity
- C. To allow for objective pass or fail decisions
- D. To identify malware or hidden code within the test results

Answer: C

NEW QUESTION 533

- (Exam Topic 12)

An employee of a retail company has been granted an extended leave of absence by Human Resources (HR). This information has been formally communicated to the access provisioning team. Which of the following is the BEST action to take?

- A. Revoke access temporarily.
- B. Block user access and delete user account after six months.
- C. Block access to the offices immediately.
- D. Monitor account usage temporarily.

Answer: D

NEW QUESTION 538

- (Exam Topic 12)

Which of the following is needed to securely distribute symmetric cryptographic keys?

- A. Officially approved Public-Key Infrastructure (PKI) Class 3 or Class 4 certificates
- B. Officially approved and compliant key management technology and processes
- C. An organizationally approved communication protection policy and key management plan
- D. Hardware tokens that protect the user's private key.

Answer: C

NEW QUESTION 541

- (Exam Topic 12)

Which of the following approaches is the MOST effective way to dispose of data on multiple hard drives?

- A. Delete every file on each drive.
- B. Destroy the partition table for each drive using the command line.
- C. Degauss each drive individually.
- D. Perform multiple passes on each drive using approved formatting methods.

Answer: D

NEW QUESTION 545

- (Exam Topic 12)

Which of the following is the PRIMARY reason for employing physical security personnel at entry points in facilities where card access is in operation?

- A. To verify that only employees have access to the facility.
- B. To identify present hazards requiring remediation.
- C. To monitor staff movement throughout the facility.
- D. To provide a safe environment for employees.

Answer: D

NEW QUESTION 550

- (Exam Topic 12)

What is an advantage of Elliptic Curve Cryptography (ECC)?

- A. Cryptographic approach that does not require a fixed-length key
- B. Military-strength security that does not depend upon secrecy of the algorithm
- C. Opportunity to use shorter keys for the same level of security
- D. Ability to use much longer keys for greater security

Answer: C

NEW QUESTION 551

- (Exam Topic 12)

An organization's information security strategic plan MUST be reviewed

- A. whenever there are significant changes to a major application.
- B. quarterly, when the organization's strategic plan is updated.
- C. whenever there are major changes to the business.
- D. every three years, when the organization's strategic plan is updated.

Answer: C

NEW QUESTION 555

- (Exam Topic 12)

Which of the following is a weakness of Wired Equivalent Privacy (WEP)?

- A. Length of Initialization Vector (IV)
- B. Protection against message replay
- C. Detection of message tampering
- D. Built-in provision to rotate keys

Answer: A

NEW QUESTION 558

- (Exam Topic 12)

Which of the following is BEST suited for exchanging authentication and authorization messages in a multi-party decentralized environment?

- A. Lightweight Directory Access Protocol (LDAP)
- B. Security Assertion Markup Language (SAML)
- C. Internet Mail Access Protocol
- D. Transport Layer Security (TLS)

Answer: B

NEW QUESTION 562

- (Exam Topic 12)

A security architect plans to reference a Mandatory Access Control (MAC) model for implementation. This indicates that which of the following properties are being prioritized?

- A. Confidentiality
- B. Integrity
- C. Availability
- D. Accessibility

Answer: C

NEW QUESTION 566

- (Exam Topic 12)

The goal of a Business Impact Analysis (BIA) is to determine which of the following?

- A. Cost effectiveness of business recovery
- B. Cost effectiveness of installing software security patches
- C. Resource priorities for recovery and Maximum Tolerable Downtime (MTD)
- D. Which security measures should be implemented

Answer: C

NEW QUESTION 570

- (Exam Topic 12)

An organization publishes and periodically updates its employee policies in a file on their intranet. Which of the following is a PRIMARY security concern?

- A. Ownership
- B. Confidentiality
- C. Availability
- D. Integrity

Answer: C

NEW QUESTION 572

- (Exam Topic 12)

The application of a security patch to a product previously validate at Common Criteria (CC) Evaluation Assurance Level (EAL) 4 would

- A. require an update of the Protection Profile (PP).
- B. require recertification.
- C. retain its current EAL rating.
- D. reduce the product to EAL 3.

Answer: B

NEW QUESTION 573

- (Exam Topic 12)

From a cryptographic perspective, the service of non-repudiation includes which of the following features?

- A. Validity of digital certificates
- B. Validity of the authorization rules
- C. Proof of authenticity of the message
- D. Proof of integrity of the message

Answer: C

NEW QUESTION 577

- (Exam Topic 12)

When evaluating third-party applications, which of the following is the GREATEST responsibility of Information Security?

- A. Accept the risk on behalf of the organization.
- B. Report findings to the business to determine security gaps.
- C. Quantify the risk to the business for product selection.
- D. Approve the application that best meets security requirements.

Answer: C

NEW QUESTION 581

- (Exam Topic 12)

Knowing the language in which an encrypted message was originally produced might help a cryptanalyst to perform a

- A. clear-text attack.
- B. known cipher attack.
- C. frequency analysis.
- D. stochastic assessment.

Answer: C

NEW QUESTION 582

- (Exam Topic 12)

What is the MOST important element when considering the effectiveness of a training program for Business Continuity (BC) and Disaster Recovery (DR)?

- A. Management support
- B. Consideration of organizational need
- C. Technology used for delivery
- D. Target audience

Answer: B

NEW QUESTION 583

- (Exam Topic 12)

When building a data classification scheme, which of the following is the PRIMARY concern?

- A. Purpose
- B. Cost effectiveness
- C. Availability
- D. Authenticity

Answer: D

NEW QUESTION 584

- (Exam Topic 12)

In which identity management process is the subject's identity established?

- A. Trust
- B. Provisioning
- C. Authorization
- D. Enrollment

Answer: D

NEW QUESTION 587

- (Exam Topic 12)

Which of the following countermeasures is the MOST effective in defending against a social engineering attack?

- A. Mandating security policy acceptance
- B. Changing individual behavior
- C. Evaluating security awareness training
- D. Filtering malicious e-mail content

Answer: C

NEW QUESTION 588

- (Exam Topic 12)

Which of the following is the PRIMARY reason to perform regular vulnerability scanning of an organization network?

- A. Provide vulnerability reports to management.
- B. Validate vulnerability remediation activities.
- C. Prevent attackers from discovering vulnerabilities.
- D. Remediate known vulnerabilities.

Answer: B

NEW QUESTION 590

- (Exam Topic 13)

Which of the following is the BEST reason for writing an information security policy?

- A. To support information security governance
- B. To reduce the number of audit findings
- C. To deter attackers
- D. To implement effective information security controls

Answer: A

NEW QUESTION 591

- (Exam Topic 13)

A security analyst for a large financial institution is reviewing network traffic related to an incident. The analyst determines the traffic is irrelevant to the investigation but in the process of the review, the analyst also finds that an applications data, which included full credit card cardholder data, is transferred in clear text between the server and user's desktop. The analyst knows this violates the Payment Card Industry Data Security Standard (PCI-DSS). Which of the following is the analyst's next step?

- A. Send the log file co-workers for peer review
- B. Include the full network traffic logs in the incident report
- C. Follow organizational processes to alert the proper teams to address the issue.
- D. Ignore data as it is outside the scope of the investigation and the analyst's role.

Answer: C

Explanation:

Section: Security Operations

NEW QUESTION 596

- (Exam Topic 13)

A company seizes a mobile device suspected of being used in committing fraud. What would be the BEST method used by a forensic examiner to isolate the powered-on device from the network and preserve the evidence?

- A. Put the device in airplane mode
- B. Suspend the account with the telecommunication provider
- C. Remove the SIM card
- D. Turn the device off

Answer: A

NEW QUESTION 600

- (Exam Topic 13)

An organization plan on purchasing a custom software product developed by a small vendor to support its business model. Which unique consideration should be made part of the contractual agreement potential long-term risks associated with creating this dependency?

- A. A source code escrow clause
- B. Right to request an independent review of the software source code
- C. Due diligence form requesting statements of compliance with security requirements
- D. Access to the technical documentation

Answer: B

NEW QUESTION 605

- (Exam Topic 13)

Which of the following are important criteria when designing procedures and acceptance criteria for acquired software?

- A. Code quality, security, and origin
- B. Architecture, hardware, and firmware
- C. Data quality, provenance, and scaling
- D. Distributed, agile, and bench testing

Answer: A

NEW QUESTION 607

- (Exam Topic 13)

Which of the following is the MOST common method of memory protection?

- A. Compartmentalization
- B. Segmentation
- C. Error correction
- D. Virtual Local Area Network (VLAN) tagging

Answer: B

NEW QUESTION 610

- (Exam Topic 13)

Which security access policy contains fixed security attributes that are used by the system to determine a user's access to a file or object?

- A. Mandatory Access Control (MAC)
- B. Access Control List (ACL)
- C. Discretionary Access Control (DAC)
- D. Authorized user control

Answer: A

NEW QUESTION 611

- (Exam Topic 13)

Drag the following Security Engineering terms on the left to the BEST definition on the right.

Security Engineering Term		Definition
Risk		A measure of the extent to which an entity is threatened by a potential circumstance or event, the adverse impacts that would arise if the circumstance or event occurs, and the likelihood of
Security Risk Treatment		The method used to identify the confidentiality, integrity, and availability requirements for organizational and system assets and to characterize the adverse impact or consequences should the asset be lost, modified, degraded, disrupted, compromised, or become unavailable.
Protection Needs Assessment		The method used to identify and characterize the dangers anticipated throughout the life cycle of the system.
Threat Assessment		The method used to identify feasible security risk mitigation options and plans.

- A. Mastered
- B. Not Mastered

Answer: A

Explanation:

Risk - A measure of the extent to which an entity is threatened by a potential circumstance of event, the adverse impacts that would arise if the circumstance or event occurs, and the likelihood of occurrence.

Protection Needs Assessment - The method used to identify the confidentiality, integrity, and availability requirements for organizational and system assets and to characterize the adverse impact or consequences should be asset be lost, modified, degraded, disrupted, compromised, or become unavailable.

Threat assessment - The method used to identify and characterize the dangers anticipated throughout the life cycle of the system.

Security Risk Treatment - The method used to identify feasible security risk mitigation options and plans.

NEW QUESTION 614

- (Exam Topic 13)

Unused space in a disk cluster is important in media analysis because it may contain which of the following?

- A. Residual data that has not been overwritten
- B. Hidden viruses and Trojan horses
- C. Information about the File Allocation table (FAT)
- D. Information about patches and upgrades to the system

Answer: A

NEW QUESTION 615

- (Exam Topic 13)

Which of the following combinations would MOST negatively affect availability?

- A. Denial of Service (DoS) attacks and outdated hardware
- B. Unauthorized transactions and outdated hardware
- C. Fire and accidental changes to data
- D. Unauthorized transactions and denial of service attacks

Answer: A

NEW QUESTION 619

- (Exam Topic 13)

A Denial of Service (DoS) attack on a syslog server exploits weakness in which of the following protocols?

- A. Point-to-Point Protocol (PPP) and Internet Control Message Protocol (ICMP)
- B. Transmission Control Protocol (TCP) and User Datagram Protocol (UDP)
- C. Address Resolution Protocol (ARP) and Reverse Address Resolution Protocol (RARP)
- D. Transport Layer Security (TLS) and Secure Sockets Layer (SSL)

Answer: B

NEW QUESTION 620

- (Exam Topic 13)

Which of the following mechanisms will BEST prevent a Cross-Site Request Forgery (CSRF) attack?

- A. parameterized database queries
- B. whitelist input values
- C. synchronized session tokens
- D. use strong ciphers

Answer: C

NEW QUESTION 625

- (Exam Topic 13)

Which of the following is the MOST efficient mechanism to account for all staff during a speedy nonemergency evacuation from a large security facility?

- A. Large mantrap where groups of individuals leaving are identified using facial recognition technology
- B. Radio Frequency Identification (RFID) sensors worn by each employee scanned by sensors at each exitdoor
- C. Emergency exits with push bars with coordinates at each exit checking off the individual against a predefined list
- D. Card-activated turnstile where individuals are validated upon exit

Answer: B

Explanation:

Section: Security Operations

NEW QUESTION 630

- (Exam Topic 13)

An organization has outsourced its financial transaction processing to a Cloud Service Provider (CSP) who will provide them with Software as a Service (SaaS). If there was a data breach who is responsible for monetary losses?

- A. The Data Protection Authority (DPA)
- B. The Cloud Service Provider (CSP)
- C. The application developers
- D. The data owner

Answer: B

NEW QUESTION 635

- (Exam Topic 13)

When developing solutions for mobile devices, in which phase of the Software Development Life Cycle (SDLC) should technical limitations related to devices be specified?

- A. Implementation
- B. Initiation
- C. Review
- D. Development

Answer: A

NEW QUESTION 636

- (Exam Topic 13)

Mandatory Access Controls (MAC) are based on:

- A. security classification and security clearance
- B. data segmentation and data classification
- C. data labels and user access permissions
- D. user roles and data encryption

Answer: A

NEW QUESTION 640

- (Exam Topic 13)

The organization would like to deploy an authorization mechanism for an Information Technology (IT) infrastructure project with high employee turnover. Which access control mechanism would be preferred?

- A. Attribute Based Access Control (ABAC)
- B. Discretionary Access Control (DAC)
- C. Mandatory Access Control (MAC)
- D. Role-Based Access Control (RBAC)

Answer: D

NEW QUESTION 644

- (Exam Topic 13)

What are the steps of a risk assessment?

- A. identification, analysis, evaluation
- B. analysis, evaluation, mitigation
- C. classification, identification, risk management
- D. identification, evaluation, mitigation

Answer: A

Explanation:

Section: Security Assessment and Testing

NEW QUESTION 649

- (Exam Topic 13)

What is the MOST significant benefit of an application upgrade that replaces randomly generated session keys with certificate based encryption for communications with backend servers?

- A. Non-repudiation
- B. Efficiency
- C. Confidentially
- D. Privacy

Answer: A

NEW QUESTION 651

- (Exam Topic 13)

Match the name of access control model with its associated restriction.

Drag each access control model to its appropriate restriction access on the right.

<u>Access Control Model</u>		<u>Restrictions</u>
Mandatory Access Control		End user cannot set controls
Discretionary Access Control (DAC)		Subject has total control over objects
Role Based Access Control (RBAC)		Dynamically assigns permissions to particular duties based on job function
Rule based access control		Dynamically assigns roles to subjects based on criteria assigned by a custodian

- A. Mastered
- B. Not Mastered

Answer: A

Explanation:

<u>Access Control Model</u>		<u>Restrictions</u>
Mandatory Access Control	Mandatory Access Control	End user cannot set controls
Discretionary Access Control (DAC)	Discretionary Access Control (DAC)	Subject has total control over objects
Role Based Access Control (RBAC)	Role Based Access Control (RBAC)	Dynamically assigns permissions to particular duties based on job function
Rule based access control	Rule based access control	Dynamically assigns roles to subjects based on criteria assigned by a custodian

NEW QUESTION 656

- (Exam Topic 13)

Proven application security principles include which of the following?

- A. Minimizing attack surface area
- B. Hardening the network perimeter
- C. Accepting infrastructure security controls
- D. Developing independent modules

Answer: A

NEW QUESTION 661

- (Exam Topic 13)

Which type of test would an organization perform in order to locate and target exploitable defects?

- A. Penetration
- B. System
- C. Performance
- D. Vulnerability

Answer: A

NEW QUESTION 662

- (Exam Topic 13)

Match the functional roles in an external audit to their responsibilities. Drag each role on the left to its corresponding responsibility on the right. Select and Place:

Role		Responsibility
Executive management		Approve audit budget and resource allocation.
Audit committee		Provide audit oversight.
Compliance officer		Ensure the achievement and maintenance of organizational requirements with applicable certifications.
External auditor		Develop and maintain knowledge and subject-matter expertise relevant to the type of audit.

- A. Mastered
- B. Not Mastered

Answer: A

Explanation:

Role		Responsibility
Executive management	Executive management	Approve audit budget and resource allocation.
Audit committee	Audit committee	Provide audit oversight.
Compliance officer	External auditor	Ensure the achievement and maintenance of organizational requirements with applicable certifications.
External auditor	Compliance officer	Develop and maintain knowledge and subject-matter expertise relevant to the type of audit.

NEW QUESTION 666

- (Exam Topic 13)

The core component of Role Based Access Control (RBAC) must be constructed of defined data elements. Which elements are required?

- A. Users, permissions, operations, and protected objects
- B. Roles, accounts, permissions, and protected objects
- C. Users, roles, operations, and protected objects
- D. Roles, operations, accounts, and protected objects

Answer: C

NEW QUESTION 671

- (Exam Topic 13)

What is the PRIMARY goal of fault tolerance?

- A. Elimination of single point of failure
- B. Isolation using a sandbox

- C. Single point of repair
- D. Containment to prevent propagation

Answer: A

NEW QUESTION 675

- (Exam Topic 13)

In a change-controlled environment, which of the following is MOST likely to lead to unauthorized changes to production programs?

- A. Modifying source code without approval
- B. Promoting programs to production without approval
- C. Developers checking out source code without approval
- D. Developers using Rapid Application Development (RAD) methodologies without approval

Answer: B

NEW QUESTION 680

- (Exam Topic 13)

Assessing a third party's risk by counting bugs in the code may not be the best measure of an attack surface within the supply chain. Which of the following is LEAST associated with the attack surface?

- A. Input protocols
- B. Target processes
- C. Error messages
- D. Access rights

Answer: C

Explanation:

Section: Security Assessment and Testing

NEW QUESTION 681

- (Exam Topic 13)

What is the second step in the identity and access provisioning lifecycle?

- A. Provisioning
- B. Review
- C. Approval
- D. Revocation

Answer: B

NEW QUESTION 686

- (Exam Topic 13)

Which of the following MUST be scalable to address security concerns raised by the integration of third-party identity services?

- A. Mandatory Access Controls (MAC)
- B. Enterprise security architecture
- C. Enterprise security procedures
- D. Role Based Access Controls (RBAC)

Answer: D

NEW QUESTION 688

- (Exam Topic 13)

What MUST each information owner do when a system contains data from multiple information owners?

- A. Provide input to the Information System (IS) owner regarding the security requirements of the data
- B. Review the Security Assessment report (SAR) for the Information System (IS) and authorize the IS to operate.
- C. Develop and maintain the System Security Plan (SSP) for the Information System (IS) containing the data
- D. Move the data to an Information System (IS) that does not contain data owned by other information owners

Answer: C

Explanation:

Section: Security Assessment and Testing

NEW QUESTION 690

- (Exam Topic 13)

When developing a business case for updating a security program, the security program owner MUST do which of the following?

- A. Identify relevant metrics
- B. Prepare performance test reports
- C. Obtain resources for the security program
- D. Interview executive management

Answer: A

NEW QUESTION 694

- (Exam Topic 13)

After following the processes defined within the change management plan, a super user has upgraded a device within an Information system. What step would be taken to ensure that the upgrade did NOT affect the network security posture?

- A. Conduct an Assessment and Authorization (A&A)
- B. Conduct a security impact analysis
- C. Review the results of the most recent vulnerability scan
- D. Conduct a gap analysis with the baseline configuration

Answer: B

Explanation:

Section: Security Assessment and Testing

NEW QUESTION 696

- (Exam Topic 13)

What is the foundation of cryptographic functions?

- A. Encryption
- B. Cipher
- C. Hash
- D. Entropy

Answer: A

NEW QUESTION 701

- (Exam Topic 13)

Which Identity and Access Management (IAM) process can be used to maintain the principle of least privilege?

- A. identity provisioning
- B. access recovery
- C. multi-factor authentication (MFA)
- D. user access review

Answer: A

NEW QUESTION 706

- (Exam Topic 13)

What does a Synchronous (SYN) flood attack do?

- A. Forces Transmission Control Protocol /Internet Protocol (TCP/IP) connections into a reset state
- B. Establishes many new Transmission Control Protocol / Internet Protocol (TCP/IP) connections
- C. Empties the queue of pending Transmission Control Protocol /Internet Protocol (TCP/IP) requests
- D. Exceeds the limits for new Transmission Control Protocol /Internet Protocol (TCP/IP) connections

Answer: B

NEW QUESTION 708

- (Exam Topic 13)

Who has the PRIMARY responsibility to ensure that security objectives are aligned with organization goals?

- A. Senior management
- B. Information security department
- C. Audit committee
- D. All users

Answer: C

NEW QUESTION 712

- (Exam Topic 13)

A user has infected a computer with malware by connecting a Universal Serial Bus (USB) storage device. Which of the following is MOST effective to mitigate future infections?

- A. Develop a written organizational policy prohibiting unauthorized USB devices
- B. Train users on the dangers of transferring data in USB devices
- C. Implement centralized technical control of USB port connections
- D. Encrypt removable USB devices containing data at rest

Answer: C

NEW QUESTION 713

- (Exam Topic 13)

A company receives an email threat informing of an Imminent Distributed Denial of Service (DDoS) attack targeting its web application, unless ransom is paid. Which of the following techniques BEST addresses that threat?

- A. Deploying load balancers to distribute inbound traffic across multiple data centers
- B. Set Up Web Application Firewalls (WAFs) to filter out malicious traffic
- C. Implementing reverse web-proxies to validate each new inbound connection
- D. Coordinate with and utilize capabilities within Internet Service Provider (ISP)

Answer: D

NEW QUESTION 715

- (Exam Topic 13)

Which of the following is the BEST metric to obtain when gaining support for an Identify and Access Management (IAM) solution?

- A. Application connection successes resulting in data leakage
- B. Administrative costs for restoring systems after connection failure
- C. Employee system timeouts from implementing wrong limits
- D. Help desk costs required to support password reset requests

Answer: D

NEW QUESTION 719

- (Exam Topic 13)

Which of the following would BEST support effective testing of patch compatibility when patches are applied to an organization's systems?

- A. Standardized configurations for devices
- B. Standardized patch testing equipment
- C. Automated system patching
- D. Management support for patching

Answer: A

Explanation:

Section: Security Assessment and Testing

NEW QUESTION 724

- (Exam Topic 13)

Which of the following provides the MOST comprehensive filtering of Peer-to-Peer (P2P) traffic?

- A. Application proxy
- B. Port filter
- C. Network boundary router
- D. Access layer switch

Answer: A

NEW QUESTION 729

- (Exam Topic 13)

A post-implementation review has identified that the Voice Over Internet Protocol (VoIP) system was designed to have gratuitous Address Resolution Protocol (ARP) disabled.

Why did the network architect likely design the VoIP system with gratuitous ARP disabled?

- A. Gratuitous ARP requires the use of Virtual Local Area Network (VLAN) 1.
- B. Gratuitous ARP requires the use of insecure layer 3 protocols.
- C. Gratuitous ARP requires the likelihood of a successful brute-force attack on the phone.
- D. Gratuitous ARP requires the risk of a Man-in-the-Middle (MITM) attack.

Answer: D

NEW QUESTION 730

- (Exam Topic 13)

"Stateful" differs from "Static" packet filtering firewalls by being aware of which of the following?

- A. Difference between a new and an established connection
- B. Originating network location
- C. Difference between a malicious and a benign packet payload
- D. Originating application session

Answer: A

NEW QUESTION 731

.....

Thank You for Trying Our Product

We offer two products:

1st - We have Practice Tests Software with Actual Exam Questions

2nd - Questions and Answers in PDF Format

CISSP Practice Exam Features:

- * CISSP Questions and Answers Updated Frequently
- * CISSP Practice Questions Verified by Expert Senior Certified Staff
- * CISSP Most Realistic Questions that Guarantee you a Pass on Your FirstTry
- * CISSP Practice Test Questions in Multiple Choice Formats and Updatesfor 1 Year

100% Actual & Verified — Instant Download, Please Click
[Order The CISSP Practice Test Here](#)