



HP

Exam Questions HPE6-A72

Aruba Certified Switching Associate Exam

NEW QUESTION 1

```
Core# configure terminal
Core(config)# vrf Green
Core(config-vrf)# exit
Core(config)#
Core(config)# interface vlan 50
Core(config-if-vlan)#
?
```

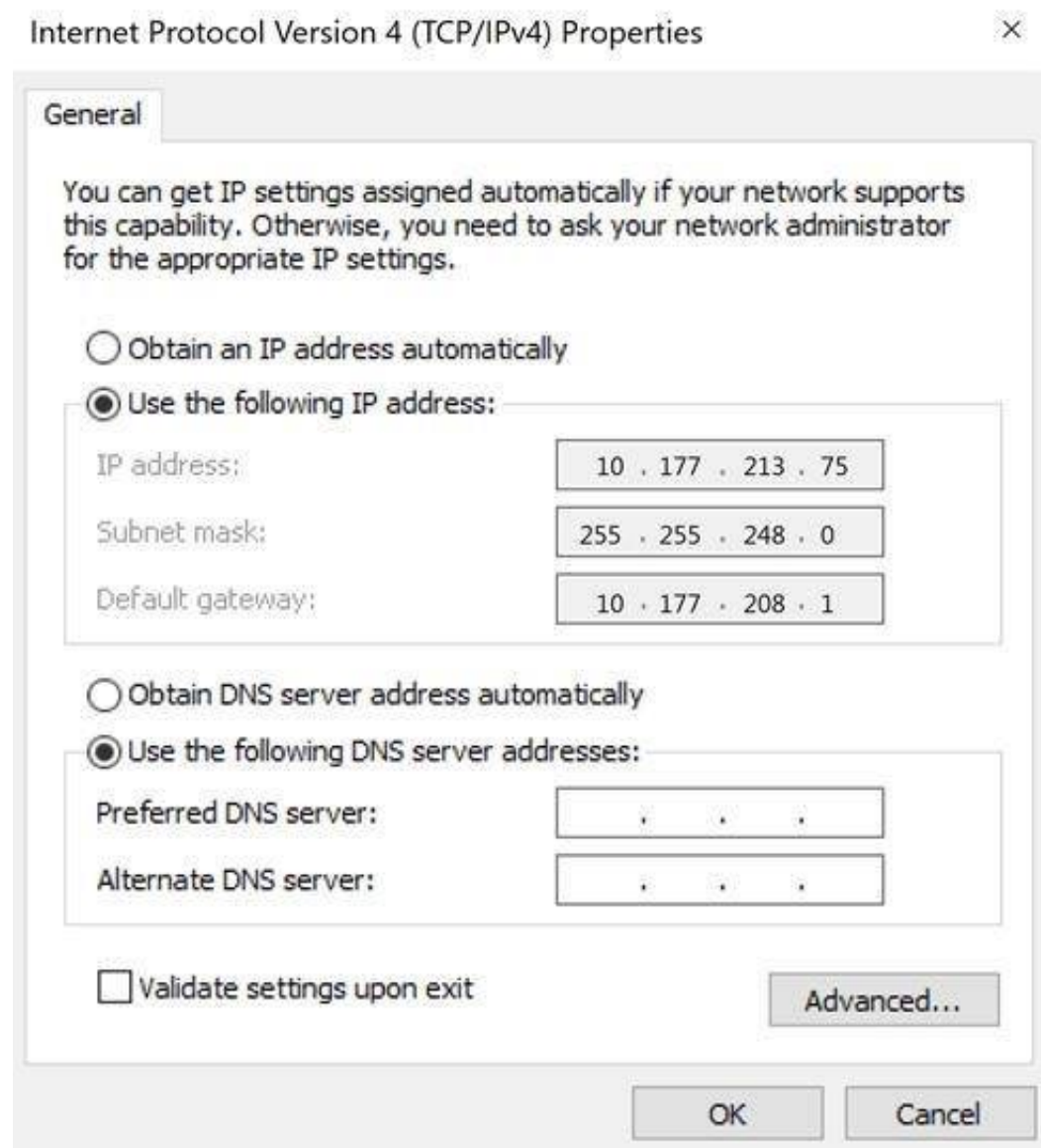
Given the configuration on the CORE switch shown above, what command would follow to assign the switched virtual interface (SVI) vlan 50 to the VRF created?

- A. Core(config-if-vlan)# vrf attach Green
- B. Core(config-if-vlan)# ip vpn-instance Green
- C. Core(config-if-vlan)# ip vrf forwarding Green
- D. Core(config-if-vlan)# routing-context Green vrf

Answer: A

NEW QUESTION 2

Refer to the exhibit.



Using the static IP address configured above, what is the converted binary value of the third octet assigned to the local interface?

- A. 11010101
- B. 10110001
- C. 01001011
- D. 11111000

Answer: A

NEW QUESTION 3

DRAG DROP

Match the switching term to the correct definition.

Term		Definition
Broadcast Domain		defines the group of devices that are on the same network segment that are capable of receiving and responding to frames destined to FF:FF:FF:FF:FF:FF
Collision Domain		
CSMA/CD		the FIB used by switches matching known-source mac-addresses to the layer one port they are learned on
Forwarding Table		
		the mechanism used by Compute NICs and Switchports operating in half-duplex to detect and recover from frame collisions
		the segment of a network connected by a shared medium, such as a hub, that is affected when two or more frames are sent at the same time

- A. Mastered
 B. Not Mastered

Answer: A

Explanation:

Term		Definition
Broadcast Domain	Broadcast Domain	defines the group of devices that are on the same network segment that are capable of receiving and responding to frames destined to FF:FF:FF:FF:FF:FF
Collision Domain		
CSMA/CD	Forwarding Table	the FIB used by switches matching known-source mac-addresses to the layer one port they are learned on
Forwarding Table		
	CSMA/CD	the mechanism used by Compute NICs and Switchports operating in half-duplex to detect and recover from frame collisions
	Collision Domain	the segment of a network connected by a shared medium, such as a hub, that is affected when two or more frames are sent at the same time

NEW QUESTION 4

What is the correct description of a Multi- Layer Switch?

- A. a switch with Layer 3 routing capabilities but lacks any Layer 1 features as a consequence
 B. any switch that supports PoE, LLDP-MED and Flow Control
 C. has all the functionality of a Layer 2 switch and most of the functionality of a Layer 3 router
 D. multi-Layer refers specifically to using chassis switches with several line cards over stack port switches

Answer: C

NEW QUESTION 5

Refer to the exhibit.


```
Core-1# show interface mgmt
Address Mode           : static
Admin State           : up
Mac Address           : 90:20:c2:bc:8e:01
IPv4 address/subnet-mask : 10.1.1.1/24
Default gateway IPv4   : 10.1.1.254
IPv6 address/prefix    :
IPv6 link local address/prefix:
Default gateway IPv6   :
Primary Nameserver     : 10.254.1.21
Secondary Nameserver    :
Core-1# ping 10.1.1.254
connect: Network is unreachable
Core-1#
```

What change on Core-1 will result in a successful ping to 10.1.1.254 from the management interface?

- A. Use the command ping 10.1.1.254 vrf mgmt
- B. Use the command ping 10.1.1.254/24
- C. Change the Core-1 management address to 10.1.1.1/25 first
- D. The destination 10.1.1.254 requires configuring a static route

Answer: A

NEW QUESTION 6

Refer to the exhibit.



The Aruba 8400 in the exhibit is member 2 of a VSX stack.

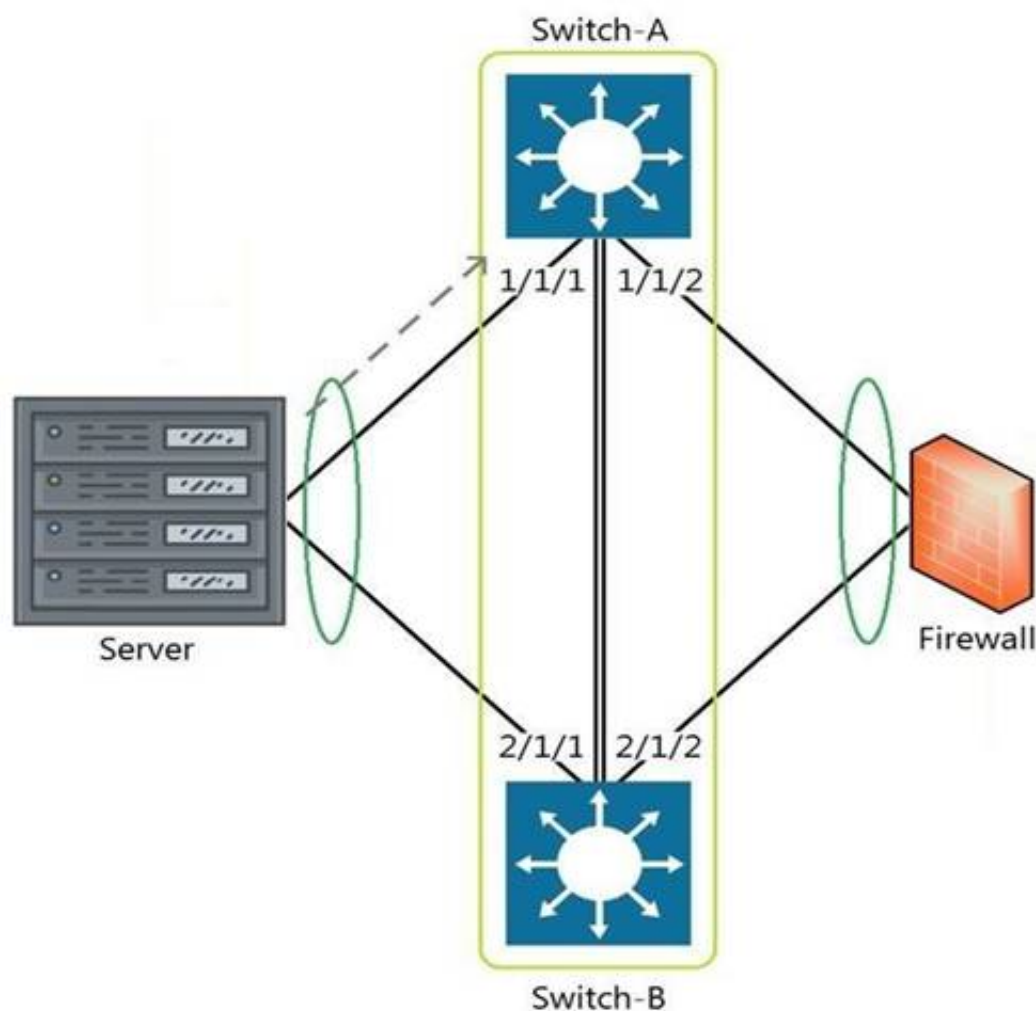
Which command will enter the interface sub configuration mode for the port, indicated by the orange square?

- A. 8400(config)# interface 2/4/15
- B. 8400(config)# interface 1/7/16
- C. 8400(config)# interface 1/4/15
- D. 8400(config)# interface 2/3/17

Answer: A

NEW QUESTION 7

Refer to the exhibit.



The above scenario shows a packet from the Server destined for the Firewall. Switch-A and Switch-B are bundled as VSF stack. The LAG between the VSF stack and the firewall indicates a hash function to forward the packet on port 2/1/2. Which statement is true regarding how Switch-A will forward the packet?

- A. Switch-A will forward the packet on port 1/1/2. VSF will override the typical LAG hash function used for the physical interface selection.
- B. Switch-A will drop the packet
- C. Multi-Chassis lag to multi-chassis lag is not a supported feature of VSF.
- D. Switch-A will encapsulate the packet using GRE to forward to Switch-B in order for the packet to egress on port 2/1/2 per the hash function.
- E. Switch-A will forward the packet along the VSF link to Switch-B so that it will egress on port 2/1/2 per the hash function.

Answer: D

NEW QUESTION 8

What are two OSPF attributes within the hello messages that must match to successfully establish neighbor relationships? (Choose two.)

- A. Router ID
- B. Priority
- C. Hello and Dead intervals
- D. Area ID
- E. Process ID

Answer: CD

NEW QUESTION 9

Your customer has 349 users in a two-story building.
 What are two benefits of a 2-Tier design? (Choose two.)

- A. Layer 2 and Layer 3 protocols run close to the endpoints to better implement ACL and QoS policy at the edge.
- B. Improved performance by offloading processing from the Access layer to the Core.
- C. Use of layer 2 switches at the access layer can process and route traffic from attached APs.
- D. Support for WAN/MPLS, Internet, and Data Center directly on the Collapsed core.
- E. Provides a more cost effective solution given that no additional switches are required for a third tier.

Answer: AE

NEW QUESTION 10

Which two options are the Layer 3 Routing protocols? (Choose two.)

- A. BGP
- B. LLDP
- C. OSPF
- D. MPLS
- E. 802.3ad

Answer: AC

NEW QUESTION 10

What command will save your configuration on an Aruba AOS-CX switch so that your changes automatically load on next reboot?

- A. copy running-config checkpoint startup-config

- B. copy startup-config running-config
- C. copy running-config initial-checkpoint
- D. copy running-config default

Answer: A

NEW QUESTION 11

What is a benefit of choosing a 3-Tier design with routing at the Aggregation layer?

- A. Better Core router performance by offloading processing
- B. Shifting endpoint access to the Aggregation layer from the Access layer
- C. Using access control lists (ACLs) at the Core to improve performance
- D. Connecting WAN/MPLS and Data center access to the Aggregation layer

Answer: A

NEW QUESTION 13

What are the benefits of a 3-Tier design over a 2- Tier? (Choose two.)

- A. Offloading processing from the Core without routing at the Access layer.
- B. Can use lower speed links between Core to Aggregation and Aggregation to Access given the use of an Aggregation layer.
- C. Lowering the cost of a deployment due to needing less switches overall.
- D. Better scalability in a campus with a large number of buildings.
- E. Gaining the flexibility to connect the Data-Center to any Access layer switch.

Answer: AD

NEW QUESTION 14

Refer to the exhibit.

VLAN	Name	Mode	Mapping
1	DEFAULT_VLAN_1	native-untagged	port
10	Sales	trunk	port
20	Service	trunk	port
30	Customer	trunk	port

Which command produces the above output?

- A. show interface port 1/1/10 trunk
- B. show vlan port 1/1/10
- C. show trunk port 1/1/10 extended
- D. show interface port 1/1/10 switchport

Answer: C

NEW QUESTION 19

Which command will suppress LLDP messages from egressing on a given port while still allowing LLDP to be enabled on the switch?

- A. switch(config-if)# no lldp interface (port) transmit
- B. switch(config-if)# no lldp transmit
- C. switch(config-if)# no lldp receive
- D. switch(config)# no lldp

Answer: B

NEW QUESTION 20

What is the process where a compute device converts logical data bits into the correct physical representation depending on the media?

- A. Demodulation
- B. Modulation
- C. Propagation
- D. Encapsulation

Answer: D

NEW QUESTION 25

Which two port characteristics must match between LAG interfaces? (Choose two.)

- A. Port number
- B. Duplex
- C. Member ID
- D. Media type
- E. Chassis number

Answer: BD

NEW QUESTION 26

The customer has 778 developers testing computer games on the network.
Which two actions resolve Broadcast storms? (Choose two.)

- A. Manually disable the redundant link to immediately resolve the impacted portion of the network.
- B. Utilize Spanning Tree to dynamically disable all redundant links in a segment.
- C. Setting switch ports to half-duplex will resolve Broadcast storms using Carrier Sense Multiple-Access Collision Detection (CSMA/CD).
- D. Enable single Area Open Shortest Path First (OSPF) on all Layer 2 switches, but do not enable routing.
- E. Utilize Spanning Tree to dynamically block Designated ports in addition to Alternate ports.

Answer: AB

NEW QUESTION 31

Interface 1/1/1 is up
Admin state is up
Link transitions: 1
Description: TO_PC-1
Hardware: Ethernet, MAC Address: 00:11:22:33:44:55
MTU 1500
Type 1GbT Full-
duplex qos
trust none
Speed 1000 Mb/s
Auto-negotiation is on
Flow-control: off
Error-control: off
MDI mode: MDIX
VLAN Mode: access
Access VLAN: 1111
Which command will produce the above output?

- A. show interface vlan 1111
- B. show interface 1/1/1
- C. show interface gigabit 1/1/1
- D. show vlan 1111

Answer: B

NEW QUESTION 32

Refer to the exhibit.



You are in the process of configuring VSF between Access-1 and Access-2. Access-1 has been configured as the VSF Master. What is a valid configuration for Access-2 to join the VSF stack?

- A. Access-2# configureAccess-2(config)# vsf member 1 Access-2(config)# vsf renumber-to 2 Access-2(vsf-member-1)# link 2 2/1/28 Access-2(vsf-member-1)# exitThis will save the VSF configuration and reboot the switc
- B. Do you want to continue (y/n)? y
- C. Access-2# configureAccess-2(config)# vsf member 2 Access-2(vsf-member-1)# link 2 1/1/28 Access-2(vsf-member-1)# exitThis will save the VSF configuration and reboot the switc
- D. Do you want to continue (y/n)? y
- E. Access-2# configureAccess-2(config)# vsf member 2 Access-2(vsf-member-1)# link 1 1/1/28 Access-2(vsf-member-1)# exitThis will save the VSF configuration and reboot the switch.Do you want to continue (y/n)? y
- F. Access-2# configureAccess-2(config)# vsf member 1 Access-2(vsf-member-1)# link 1 1/1/28 Access-2(vsf-member-1)# exitAccess-2(config)# vsf renumber-to 2This will save the VSF configuration and reboot the switc
- G. Do you want to continue (y/n)? y

Answer: C

NEW QUESTION 37

What are two mechanisms supported on AOS-CX 6300 switches used in Multi-active Detection to determine the status of the Primary member? (Choose two.)

- A. Management interface split detection
- B. Peer switch-based detection
- C. Loopback keepalives

- D. ARP-based
- E. BFD

Answer: AD

NEW QUESTION 42

Which port or ports should be allowed through a firewall so that an AOS-CX switch can act as an SNMP Agent?

- A. UDP 1812 and UDP 1813
- B. UDP 161
- C. TCP 443
- D. UDP 162

Answer: B

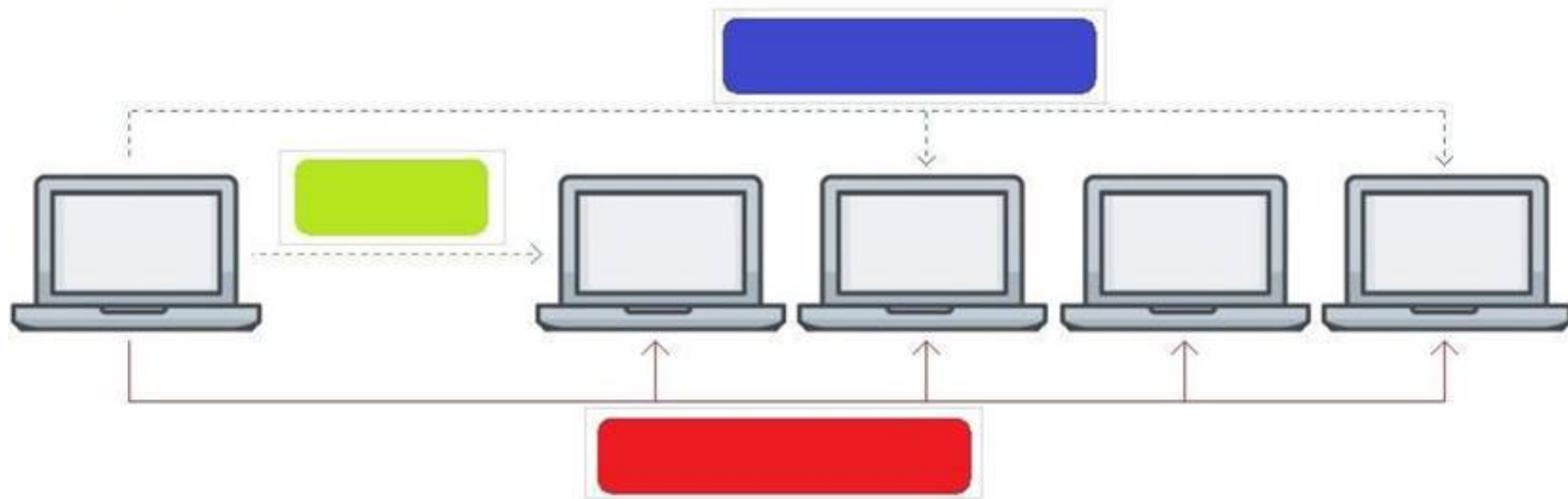
NEW QUESTION 46

HOTSPOT

Click on the colored box that corresponds with the line that best represents Unicast traffic flow.

Hot Area:

Answer Area

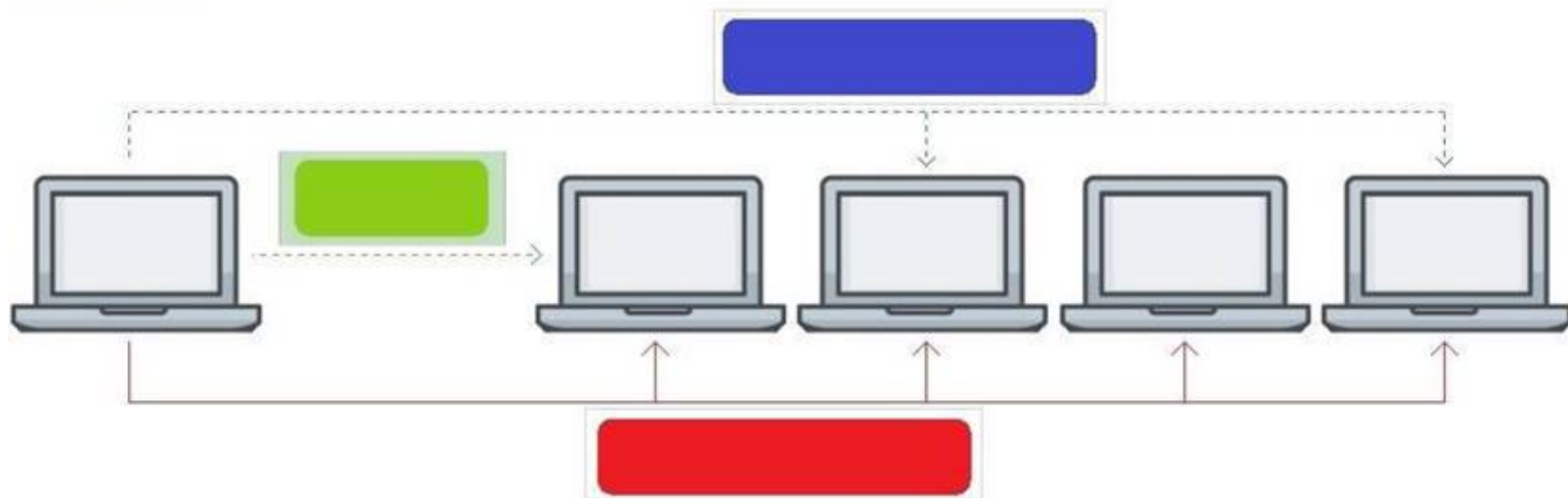


- A. Mastered
- B. Not Mastered

Answer: A

Explanation:

Answer Area



NEW QUESTION 48

What are two methods for remotely managing an Aruba AOS-CX switch? (Choose two.)

- A. SNMPv2c
- B. HTTPS
- C. USB-C console
- D. Telnet
- E. SSHCorrect

Answer: BE

NEW QUESTION 52

Core(config)# user admin password
 Core(config)# interface mgmt


```
Core(config-if-mgmt)# ip static 10.254.16.89/22
Core(config-if-mgmt)# default-gateway 10.254.19.129
Core(config)# ssh server vrf mgmt
Core(config)# https-server vrf mgmt
```

You are tasked with configuring the Core switch to be managed by NetEdit. Currently, the Core switch is at factory-default settings. Which two steps are missing? (Choose two.)

- A. Core(config)# https-server rest access-mode read-write
- B. Core(config-if-mgmt)# no shutdown
- C. Core(config-if-mgmt)# no tftp-server
- D. Core(config-if-mgmt)# enable
- E. Core(config)# https-server rest access-mode read-only

Answer: AB

NEW QUESTION 56

Which two options are correct regarding the IEEE 802.11ax standard? (Choose two.)

- A. allows transmissions of up to 4.8Gbps
- B. is an emerging satellite connection standard to allow wireless access anywhere in the world
- C. operates only in the 5GHz similar to 802.11ac
- D. operates in both the 2.4GHz and 5GHz radios bands
- E. is the first WLAN standard to no longer use electromagnetic signals to transmit data

Answer: AD

NEW QUESTION 59

.....

Thank You for Trying Our Product

We offer two products:

1st - We have Practice Tests Software with Actual Exam Questions

2nd - Questions and Answers in PDF Format

HPE6-A72 Practice Exam Features:

- * HPE6-A72 Questions and Answers Updated Frequently
- * HPE6-A72 Practice Questions Verified by Expert Senior Certified Staff
- * HPE6-A72 Most Realistic Questions that Guarantee you a Pass on Your FirstTry
- * HPE6-A72 Practice Test Questions in Multiple Choice Formats and Updatesfor 1 Year

100% Actual & Verified — Instant Download, Please Click
[Order The HPE6-A72 Practice Test Here](#)