

HP

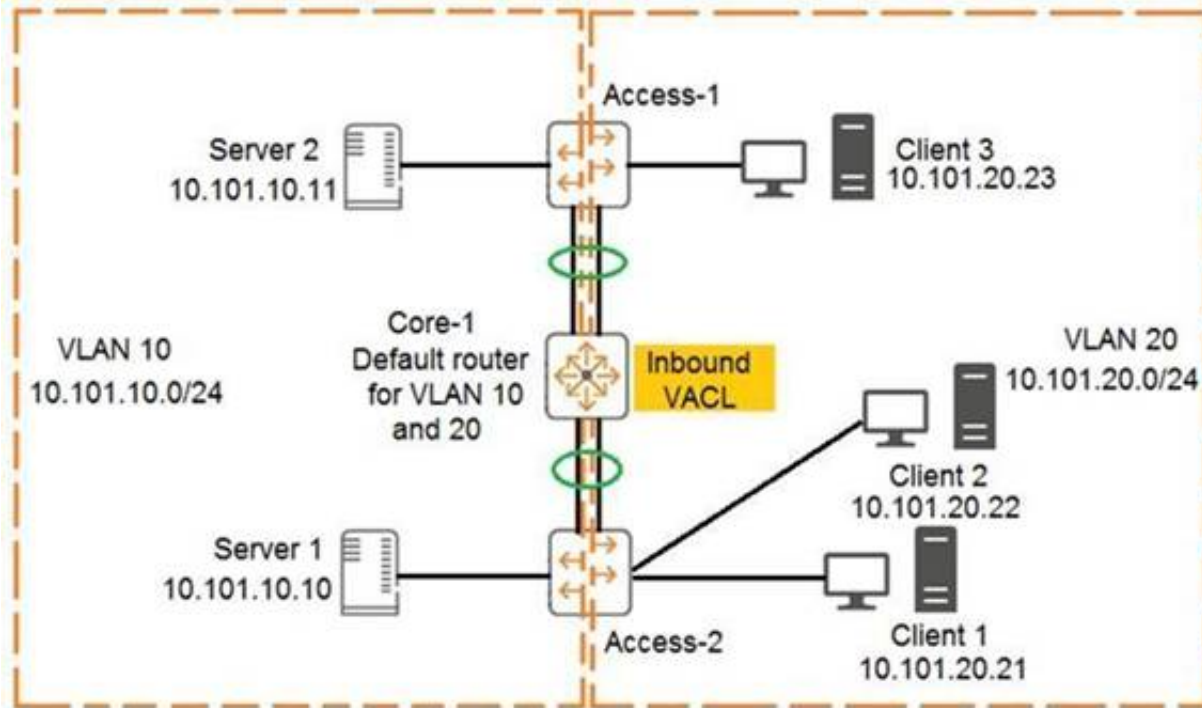
Exam Questions HPE6-A73

Aruba Certified Switching Professional Exam



NEW QUESTION 1

Examine the network exhibit:



The ACL configuration defined on Core-1 is as follows:

```
Core-1(config)# access-list ip example
Core-1(config-acl-ip)# permit ip 10.101.20.21/32 any eq 23
Core-1(config-acl-ip)# permit ip 10.101.20.21/32 eq 23 any
Core-1(config-acl-ip)# exit
Core-1(config)# vlan 20
Core-1(config-if)# apply access-list example in
```

The ACL configuration defined on Core-1 is as follows:

If telnet was being used, which device connection would be permitted and functional in both directions? (Choose two.)

- A. Client 3 to Client 2
- B. Client 1 to Client 2
- C. Server 2 to Client 2
- D. Server 1 to Client 1
- E. Client 1 to Client 3

Answer: BD

Explanation:

CL3 - CL2 - drop on forward path by core1 cause match VLAN 20 and CL3 not CL1 as SRC IP CL1 - CL2 - pass - no ACL cause forwarded by Access2
 SR2 - CL2 - pass on forward path by core1 cause match VLAN 10
 Drop on return path by core1 cause match VLAN 20 and no CL1 as SRC IP SR1 - CL1 - pass on forward path by core1 cause match VLAN 10
 pass on return path by core1 cause match VLAN 20 and CL1 as SRC IP
 CL1 - CL3 - pass on forward path by core1 cause match VLAN 20 and CL1 as SRC IP drop on return path by core1 cause match VLAN 20 and not CL1 but CL3 as SRC IP

NEW QUESTION 2

What is correct regarding rate limiting and egress queue shaping on AOS-CX switches?

- A. Only a traffic rate and burst size can be defined for a queue
- B. Limits can be defined only for broadcast and multicast traffic
- C. Rate limiting and egress queue shaping can be used to restrict inbound traffic
- D. Rate limiting and egress queue shaping can be applied globally

Answer: A

Explanation:

you could apply egress queue shaping to the high priority queues to prevent starvation of low priority queues. Egress queue shaping allows you to apply a maximum bandwidth to a priority queue, as well as a burst size. The port buffers excess traffic up to the burst size and sends the buffered traffic at the max rate, smoothing out bursts while also preventing the high priority queue from exceeding its maximum rate and starving out lower priority queues.

NEW QUESTION 3

A network administrator wants to centralize the management of AOS-CX switches by implementing NetEdit. How should the administrator purchase and/or install the NetEdit solution?

- A. Install as a hardware appliance
- B. Installed on a supported version of RedHat Enterprise Linux
- C. Installed in a virtualized solution by using the Aruba-supplied OVA file
- D. Installed on a supported version of Debian Linux

Answer: C

NEW QUESTION 4

What is a concept associated with PIM sparse mode (SM)?

- A. Reverts to forwarding when the pruning state times out.
- B. Requires periodic joins to maintain the shortest path tree (SPT).
- C. Recommended for use when high bandwidth connections exist.
- D. Implements a push content to forward traffic from the multicast source.

Answer: B

Explanation:

<https://www.youtube.com/watch?v=PhzMtUcS6UA>

NEW QUESTION 5

When an AOS-CX switch uses a temporary copy of the Configuration State database, what kind of analysis does NetEdit perform to ensure that the configuration is correct?

- A. Syntax validation
- B. Semantic validation
- C. Conformance validation
- D. Change validation

Answer: D

Explanation:

Validation processes

+ Syntax validation

– When: while typing

– What: command syntax including in-line help

+ Semantics validation

– When: VALIDATE button (in multi-editor) or before DEPLOY

– What: configuration consistency

+ Conformance validation

– When: while editing

– What: compliance with conformance rules: corporate policies, minimum connectivity requirements, etc.

+ Change validation

– When: during DEPLOY (before and after configuration deployment)

– What: compares device state before and after changes are applied (using show commands)

NEW QUESTION 6

An administrator is implementing a downloadable user role solution involving AOS-CX switches. The AAA solution and the AOS-CX switches can successfully authenticate users; however, the role information fails to download to the switches. What policy should be added to an intermediate firewall to allow the downloadable role function to succeed?

- A. Allow TCP 443
- B. Allow UDP 1811
- C. Allow UDP 8211
- D. Allow TCP 22

Answer: A

Explanation:

pg 681 from the Aruba guide - "When using DUR, the ClearPass HPE-CPPM-Role VSA is used in combination with HTTPS to transfer the role to the switch." UDP 8211 (PAPI) is related to dynamic segmentation and the communication to the MC not DUR.

NEW QUESTION 7

An administrator is managing a pair of core AOS-CX switches configured for VSX. Connected to this core are pairs of aggregation layer AOS-CX switches configured for VSX. OSPF is running between the aggregation and core layers. To speed up OSPF convergence, the administrator has configured BFD between the core and aggregation switches.

What is a best practice the administrator should implement to reduce CPU processing on the switches if a BFD neighbor fails?

- A. Disable ICMP redirects
- B. Implement graceful restart
- C. Increase the BFD echo timers
- D. Increase the VSX keepalive timer

Answer: A

NEW QUESTION 8

An administrator wants to implement a virtual switching technology that implements a single control-plane solution. Which S-CX switches would meet these criteria?

- A. All AOS-CX switching platforms
- B. AOS-CX 6300 and 6400 switches
- C. AOS-CX 6300, 6400, and 83xx switches
- D. AOS-CX 6300 switches

Answer: C

NEW QUESTION 9

MAC authentication is enabled on port 1/1/27 of an AOS-CX switch. The following MAC addresses are defined on the AAA server:

* 88:3a:30:97:b6:00

* 00:50:56:b1:fc:9b

Examine the AOS-CX switch output:

```
Switch# show mac-address-table detail
MAC age-time           : 300 seconds
Number of MAC addresses : 10
```

MAC Address	VLAN	Type	Port	Age	Denied	never_ageout
20:4c:03:5f:98:02	1	dynamic	lag256	300	false	false
88:3a:30:97:b6:00	11	port-access-security	1/1/27	300	false	false
00:50:56:b1:fc:9b	11	port-access-security	1/1/27	300	true	false
02:02:00:00:12:00	11	dynamic	lag256	300	false	false
90:20:c2:bc:17:00	11	dynamic	lag256	300	false	false

Based on this information, what is true concerning port 1/1/27?

- A. Device-mode is enabled with a client limit of 1.
- B. Device-mode is enabled with a client limit of 2.
- C. Client-mode is enabled with a client limit of 1.
- D. Client-mode is enabled with a client limit of 2.

Answer: C

Explanation:

https://www.arubanetworks.com/techdocs/AOS-CX/AOSCX-CLI-Bank/cli_6300-6400/Content/Chp_Port_acc/P client-mode = Selects client mode. In this mode, all clients connecting to the port are sent for authentication. device-mode = Selects device mode. In this mode, only the first client connecting to the port is sent for authentication. Once this client is authenticated, the port is considered as open and all subsequent clients trying to connect on that port are not sent for authentication.

NEW QUESTION 10

What is correct regarding the configuration of ACLs on AOS-CX switches?

- A. Statements with the log keyword are always processed by the switch CPU.
- B. Standard ACLs are used to match on routes when performing route distribution.
- C. Wildcard masks are used to match on a range of IP addresses.
- D. Numbers 100 through 199 and 2000 through 2999 are used when creating extended ACLs.

Answer: C

NEW QUESTION 10

An administrator is managing a network comprised of AOS-CX switches deployed at the aggregation layer. The switches are paired in a VSX stack and run the OSPF routing protocol. The administrator is concerned about how long it takes for OSPF to converge when one of the VSX switches has to reboot. What should the administrator do to speed up the OSPF convergence of the switch that is rebooting?

- A. Change the VSXISL link from an OSPF broadcast link point-to-point.
- B. Implement graceful restart on the VSX switches and their neighboring OSPF switches.
- C. Decrease the VSX initial synchronization timer on the two VSX switches.
- D. Define non-backbone areas on the VSX switches as totally stubby areas.

Answer: B

NEW QUESTION 11

Examine the following AOS-CX switch configuration:

```
Switch(config-addgroup-ip)# object-group ip address servers
Switch(config-addgroup-ip)# 10.1.0.100
Switch(config-addgroup-ip)# 10.1.1.100
Switch(config-addgroup-ip)# exit
```

Which access control entries would allow web traffic to the web servers 10.1.0.100 and 10.1.1.100?

- A. permit tcp servers eq 80
- B. permit tcp any 10.1.0.100 0.0.1.0 eq 80
- C. permit tcp any 10.1.0.100/10.1.1.100 eq 80
- D. permit tcp any 10.1.0.100/255.255.254.255 eq 80

Answer: B

NEW QUESTION 16

A switch will apply a device profile to a port based on which pieces of information? (Select two.)

- A. IP header
- B. MAC address
- C. LLDP
- D. User role
- E. 802.1Q

Answer: AB

NEW QUESTION 19

An administrator of a large campus network needs a solution that will provide root cause analytics to quickly identify problems so that they can quickly be fixed. Which AOS-CX switch feature should the administrator utilize to help with root cause analytics?

- A. NAE
- B. VoQ
- C. NetEdit
- D. VSX

Answer: A

NEW QUESTION 22

A customer has twenty AOS-CX switches that will be managed by NetEdit and would like support for NetEdit these switches will exist in the network for at least five years.

Which type of licensing should be used by this customer?

- A. 20 Aruba NetEdit permanent licenses
- B. 20 Aruba NetEdit single node subscription licenses
- C. 25 Aruba NetEdit permanent licenses
- D. 1 Aruba NetEdit SMB License

Answer: B

NEW QUESTION 25

A company has a third-party AAA server solution. The campus access layer was just upgraded to AOS-CX switches that perform access control with MAC-Auth and 802.1X. The company has an Aruba Mobility Controller (MC) solution for wireless, and they want to leverage the firewall policies on the controllers for the wired traffic.

What is correct about how the company should implement a security solution where the wired traffic is processed by the gateways?

- A. Implement downloadable user roles with a gateway role defined on the AOS-CX switches
- B. Implement local user roles with a gateway role defined on the AOS-CX switches
- C. Implement standards-based RADIUS VSAs to pass policy information directly to the AOS-CX switches and MCs
- D. Implement downloadable user roles with a device role defined on the AOS-CX switches and MCs

Answer: B

NEW QUESTION 27

A network has two AOS-CX switches connected to two different service providers. The administrator is concerned about bandwidth consumption on the service provider links and learned that the service providers were using the company as a transit AS. Which feature should the administrator implement to prevent this situation?

- A. Configure route maps and apply them to BGP
- B. Configure the two switches as route reflectors
- C. Configure a classifier policy to disable MED
- D. Configure bi-directional forwarding detection on both switches

Answer: A

NEW QUESTION 32

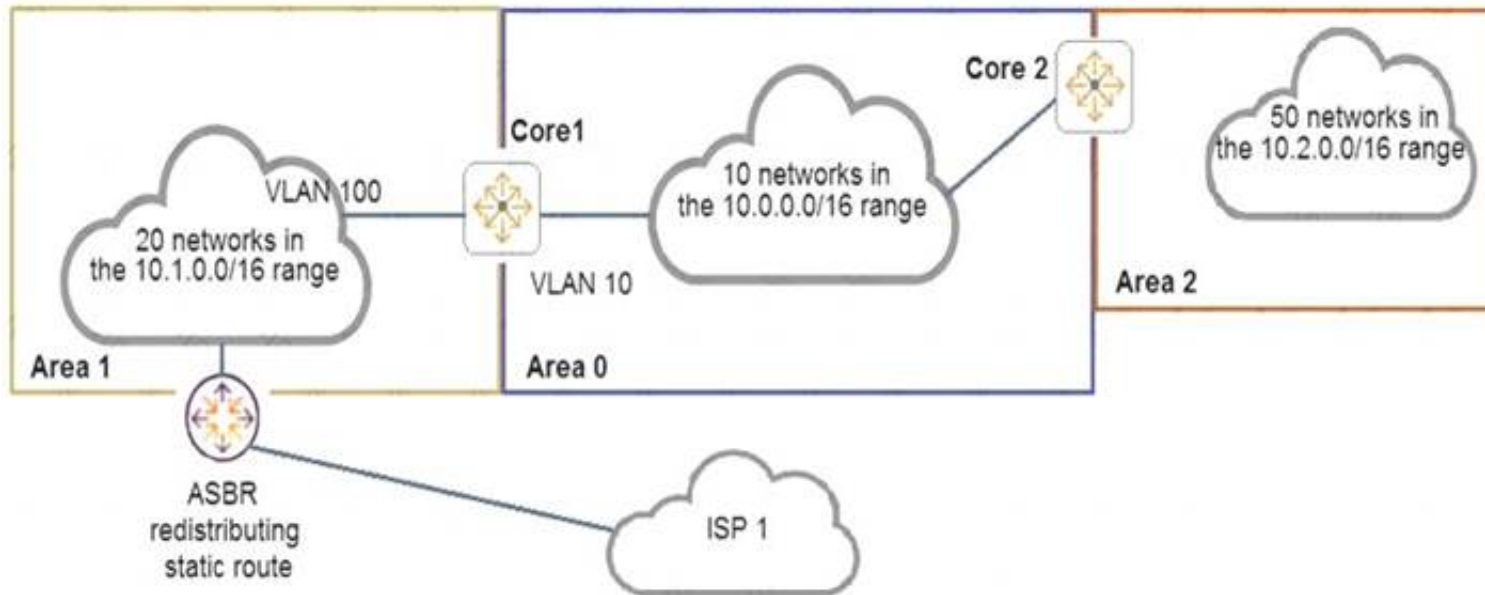
In AOS-CX switching, what determines when a frame is forwarded by the switch between the ingress and the egress port?

- A. Egress port
- B. Ingress port
- C. VSX switch tables
- D. Fabric Load Balancer

Answer: B

NEW QUESTION 34

Examine the network topology.



- _ The network is configured for OSPF with the following attributes:
 - Core1 and Core2 and ABRs
 - _ Area 1 has 20 networks in the 10.1.0.0/16 range
 - _ Area 0 has 10 networks in the 10.0.0.0/16 range
 - _ Area 2 has 50 networks in the 10.2.0.0/16 range
 - _ The ASBR is importing a static route into Area 1
 - _ Core2 has a summary for Area 2: area 0.0.0.2 range 10.2.0.0/16 type inter-area
- Here is the OSPF configuration performed on Core1:

```
router ospf 1
  router-id 10.0.0.1
  area 0.0.0.0
  area 0.0.0.1 stub
  area 0.0.0.1 range 10.1.0.0/16 type inter-area
  area 0.0.0.2
  area 0.0.0.0 range 10.1.0.0/16 type inter-area
  exit
interface vlan 10
  ip ospf 1 area 0
  exit
interface vlan 100
  ip ospf 1 area 1
  exit
```

Based on the above information, what is correct?

- A. ISP 1 is not reachable from any area.
- B. Core1 has received one type 5 LSA from the ASBR.
- C. Area 0 has 81 routes
- D. Area 1 has 23 routes

Answer: C

NEW QUESTION 36

An administrator wants to use an existing Aruba gateway's firewall policies to filter both wireless and wired traffic. Which AOS-CX switch feature should a customer implement to ensure the gateway applies the same or similar firewall policies to users' wired and wireless traffic?

- A. GRE tunneling
- B. User-based tunneling
- C. Port-based tunneling
- D. IPSec tunneling

Answer: A

NEW QUESTION 37

A network administrator is implementing a configuration plan in NetEdit. The administrator used NetEdit to push the configuration plan to the switch. Which option in the NetEdit planning section should the administrator select to save the configuration running on the switch to the startup-config?

- A. EDIT
- B. VALIDATE
- C. COMMIT
- D. DEPLOY

Answer: C

NEW QUESTION 42

Examine the AOS-CS switch output:

```
Switch# show aaa authentication port-access interface 1/1/1 client-status
```

Port Access Client Status Details

```
Client 00:50:56:b1:7a:37, icx-employee
```

Session Details

```
Port      : 1/1/3
Session Time : 31273s
```

Authentication Details

```
Status      : dot1x Authenticated
Auth Precedence : dot1x - Authenticated, mac-auth - Not attempted
```

Authorization Details

```
Role       : aruba_contractor-3044-7
Status     : Applied
```

Based on this output, what is correct?

- A. 802.1X authentication was successful, but MAC authentication is yet to start
- B. 802.1X authentication occurred and downloadable user roles are deployed
- C. A local user role was deployed using a ClearPass solution
- D. Only 802.1X authentication is configured on the port

Answer: B

NEW QUESTION 45

An administrator creates an ACL rule with both the “count” and “log” option enabled. What is correct about the action taken by an AOS-CX switch when there is a match on this rule?

- A. By default, a summarized log is created every minute with a count of the number of matches
- B. Logging will not include certificate and TLS events, but counting will
- C. The “count” and “log” options are processed by the AOS-CX switch’s hardware ASIC
- D. The total in the “log” record and the count could contain different rule matching statistics

Answer: D

Explanation:

From the "AOS-CX 10.08 ACLs and Classifier Policies Guide" : "You may see a minor discrepancy between the ACL logging statistics and the hit counts statistics due to the time required to record the log message."

NEW QUESTION 50

A company has an existing wireless solution involving Aruba APs and Mobility controllers running 8.4 code. The solution leverages a third-party AAA solution. The company is replacing existing access switches with AOS-CX 6300 and 6400 switches. The company wants to leverage the same security and firewall policies for both wired and wireless traffic.

Which solution should the company implement?

- A. RADIUS dynamic authorization
- B. Downloadable user roles
- C. IPSec
- D. User-based tunneling

Answer: D

NEW QUESTION 53

A company is implementing a new wireless design and needs it to support high availability, even during times of switch system upgrades. The solution will involve Aruba Mobility Controller (MC) and Aruba AP connections requiring POE. Which campus AOS-CX switch solution and virtual switching should the company implement at the campus access layer?

- A. AOS-CX 6400 and VSX
- B. AOS-CX 6300 and VSF
- C. AOS-CX 8325 and VSF
- D. AOS-CX 8400 and VSX

Answer: A

Explanation:

only 6400 support highly available during upgrades

NEW QUESTION 55

A company has a few servers in a secure, remote location storing highly-confidential documents connected to two AOS-CX 6400 switches configured in a VSX pair. The AOS-CX switches perform access control with 802 1X and will be implementing user-based tunneling (UBT) so that Aruba gateway application inspection and stateful firewall policies can be applied to the traffic. The gateways are running version 84 and implement the AP, PEF, and RFP licenses

Which licensing is needed for the two AOS-CX switches?

- A. 2 AP and 2 PEF licenses only
- B. 1 AP license only
- C. 2 AP, 2 PEF, and 2 RFP licenses only
- D. 1 AP, 1 PEF, and 1 RFP licenses only

Answer: D

NEW QUESTION 59

What is a best practice concerning voice traffic and dynamic segmentation on AOS-CX switches?

- A. Controller authentication and user-based tunneling of the voice traffic
- B. Switch authentication and user-based tunneling of the voice traffic
- C. Controller authentication and port-based tunneling of the voice traffic
- D. Switch authentication and local forwarding of the voice traffic

Answer: D

NEW QUESTION 62

Which AOS-CX switches support weighted fair queuing (WFQ)?

- A. Both 8320 and 8325
- B. Both 6300 and 6400
- C. 8400 only
- D. 6300 only

Answer: C

Explanation:

https://www.arubanetworks.com/techdocs/AOS-CX/AOSCX-CLI-Bank/cli_8400/Content/QoS_cmds/wfq-que-x

NEW QUESTION 63

A network administrator is implementing OSPF, where there are two exit points. Each exit point has a stateful, application inspection firewall to implement company policies.

What would the best practice be to ensure that one firewall will see both directions of the traffic, preventing asynchronous connections in the network?

- A. Both ASBRs should define External Type 1 routes for the
- B. Both ASBRs should define External Type 1 routes for the
- C. Both ASBRs should define External Type 2 routes for the
- D. Both ASBRs should define External Type 2 routes for the

Answer: A

NEW QUESTION 66

A company has recently purchased a ClearPass AAA solution. Their network consists of AOS-CX switches at the access layer. The company is implementing a rollout of IoT devices for smart building management to control the lighting and HVAC systems. The network administrator is concerned about allowing secure access to these devices since they only support MAC-Auth.

Which ClearPass feature should the administrator leverage to help determine that MAC address spoofing is not occurring for this group of devices?

- A. User-based tunneling
- B. Device fingerprinting
- C. RADIUS change of authorization
- D. Downloadable user roles

Answer: B

NEW QUESTION 67

What is correct regarding the operation of VSX and multicasting with PIM-SM routing configured?

- A. Each VSX peers runs PIM and builds its own group databas
- B. One of the VSX peers is elected as the designated router (DR) to forward multicast streams to a receiver VLAN
- C. Each VSX peers runs PIM and creates a shared group databas
- D. Both VSX peers can forward multicast streams to receivers in a VLAN, achieving load sharing
- E. Each VSX peers runs PIM and builds its own group databas
- F. Both VSX peers can forward multicast streams to receivers in a VLAN, achieving load sharing
- G. Each VSX peers runs PIM and creates a shared group databas
- H. One of the VSX peers is elected as the designated router (DR) to forward multicast streams to a receiver VLAN

Answer: A

Explanation:

"both VSX switches as a PIM Designate Router (DR). One node is the actual DR, the other node is the proxy DR." "Only the actual DR performs multicast routing and forward traffic destined to groups to its downstream VLANs in the data-path."

https://www.arubanetworks.com/techdocs/AOS-CX/10.07/HTML/5200-7888/Content/Chp_Pre_tra_loss/ip-mul

NEW QUESTION 68

An administrator is replacing the current access switches with AOS-CX switches. The access layer switches must authenticate user and networking devices connecting to them. Some devices support no form of authentication, and some support 802.1X. Some ports have a VoIP phone and a PC connected to the same port, where the PC is connected to the data port of the phone and the phone's LAN port is connected to the switch. Which statement is correct about this situation?

- A. 802.1X must be configured to work in fallback mode
- B. Device fingerprinting is required for authentication
- C. The client-limit setting for port access needs to be changed
- D. Device mode should be implemented

Answer: C

Explanation:

fallback mode if for the radius part; client limit is for multiple authentic on one port (ie phone + pc) From doc :

aaa port-access authenticator <port-list> client-limit <1-32>

Used after executing aaa port-access authenticator <port-list> to convert authentication from port-based to user-based. Specifies user-based 802.1X authentication and the maximum number of 802.1X-authenticated client sessions allowed on each of the ports in <port-list>. If a port currently has no authenticated client sessions, the next authenticated client session the port accepts determines the untagged VLAN membership to which the port is assigned during the session. If another client session begins later on the same port while an earlier session is active, the later session will be on the same untagged VLAN membership as the earlier session.

NEW QUESTION 72

When implementing user-based tunneling on an AOS-CX switch, which component defines the primary and backup Aruba gateways?

- A. Transit VLAN
- B. Gateway role
- C. Server group
- D. Zone

Answer: D

NEW QUESTION 74

How does an administrator install a script and create an agent and actions for the Network Analysis Engine running on AOS-CX switches?

- A. Access the switches' command-line interface.
- B. Access the switches' web user interface
- C. Use Aruba Central's web user interface
- D. Use the NetEdit web user interface

Answer: B

NEW QUESTION 75

A company has just purchased AOS-CX switches. The company has a free and open-source AAA solution. The company wants to implement access control on the Ethernet ports of the AOS-CX switches.

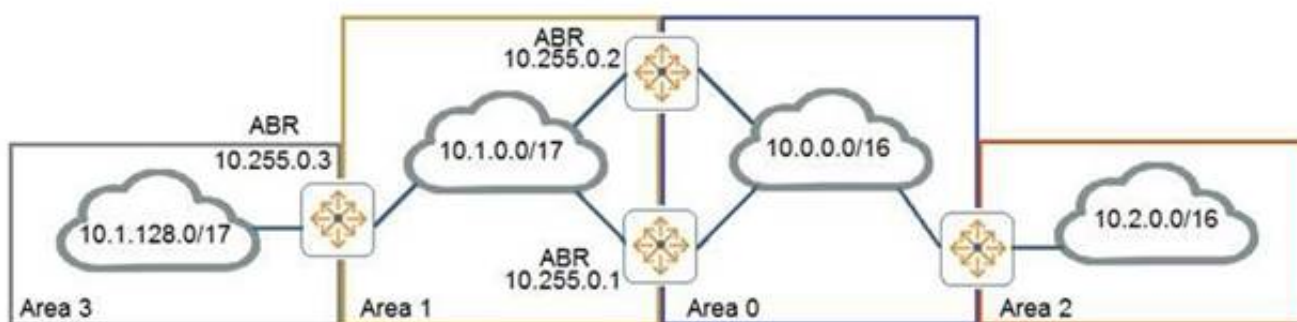
Which security features can the company implement given the equipment that they are using?

- A. Port-based tunneling
- B. Device fingerprinting
- C. Local user roles
- D. Downloadable user roles

Answer: C

NEW QUESTION 79

Examine the attached exhibit.



The network administrators is trying to add a remote location as area 3 to the network shown in the diagram. Based on current connection restrictions, the administrator cannot connect area 3 directly to area 0. The network is using AOS-CX switches.

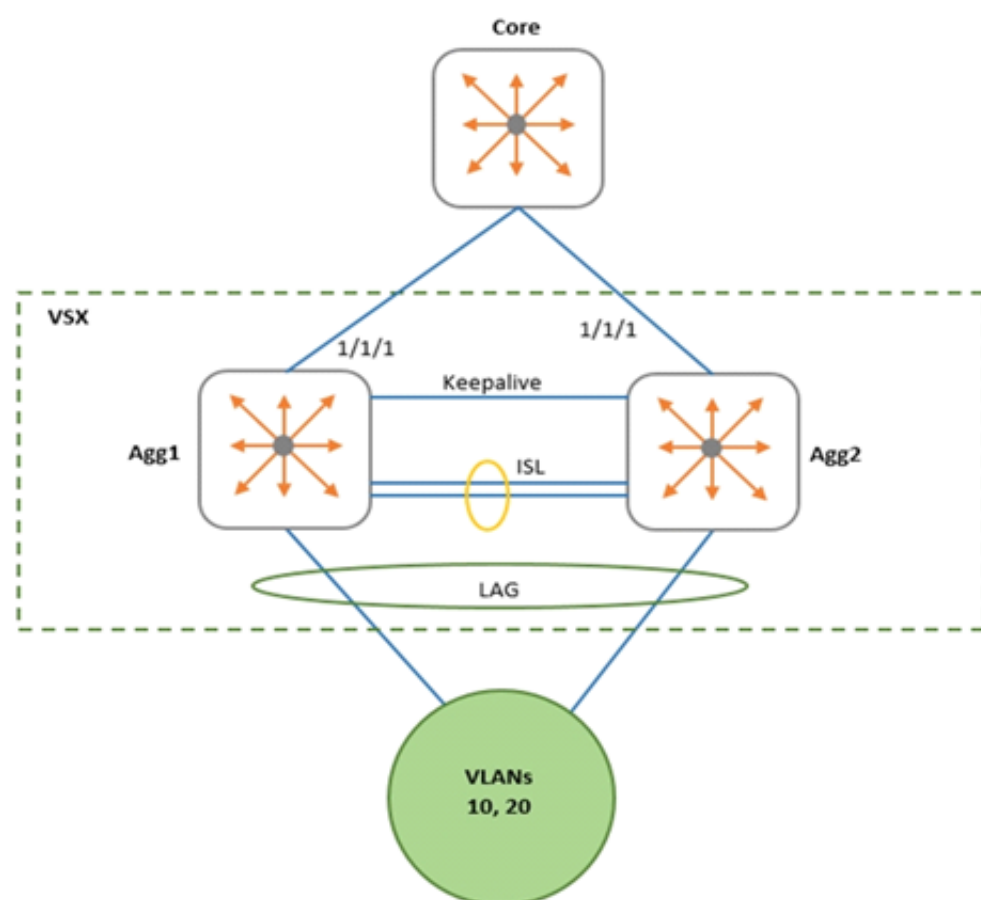
Which feature should the administrator implement to provide connectivity to the remote location?

- A. Not-so-stubby areas
- B. Bidirectional forward detection (BFD)
- C. OSPFv3
- D. Virtual links

Answer: D

NEW QUESTION 82

Examine the network exhibit.



A network administrator is implementing OSPF on a VSX pair of aggregation switches: Agg1 and Agg2. VLANs 10 and 20 are connected to layer-2 access switches. Agg-1 and Agg-2 are configured as the default gateway for VLANs 10 and 20, with active gateway enabled. What is the best practice for configuring OSPF on the aggregation switches and their connection to the Core switch?

- A. Define a layer-2 VSX LAG associated with a layer-3 VLAN interface
- B. Enable active gateway for the Layer-3 VLAN.
- C. Define separate layer-3 VLAN interfaces between the aggregation and core switch
- D. Enable active forwarding for the Layer-3 VLAN.
- E. Define separate layer-3 VLAN interfaces between the aggregation and core switch
- F. Enable active gateway for the Layer-3 VLAN.
- G. Define a layer-2 VSX LAG associated with a layer-3 VLAN interface
- H. Enable active forwarding for the Layer-3 VLAN.

Answer: A

NEW QUESTION 83

.....

Thank You for Trying Our Product

We offer two products:

1st - We have Practice Tests Software with Actual Exam Questions

2nd - Questions and Answers in PDF Format

HPE6-A73 Practice Exam Features:

- * HPE6-A73 Questions and Answers Updated Frequently
- * HPE6-A73 Practice Questions Verified by Expert Senior Certified Staff
- * HPE6-A73 Most Realistic Questions that Guarantee you a Pass on Your FirstTry
- * HPE6-A73 Practice Test Questions in Multiple Choice Formats and Updatesfor 1 Year

100% Actual & Verified — Instant Download, Please Click
[Order The HPE6-A73 Practice Test Here](#)