

The-Open-Group

Exam Questions OGEA-101

TOGAF Enterprise Architecture Part 1 Exam (English)



NEW QUESTION 1

Which of the following is the ability to develop use and sustain the architecture of a particular enterprise using architecture to govern change?

- A. An EA Capability
- B. An EA repository
- C. An EA framework
- D. An Enterprise Architecture

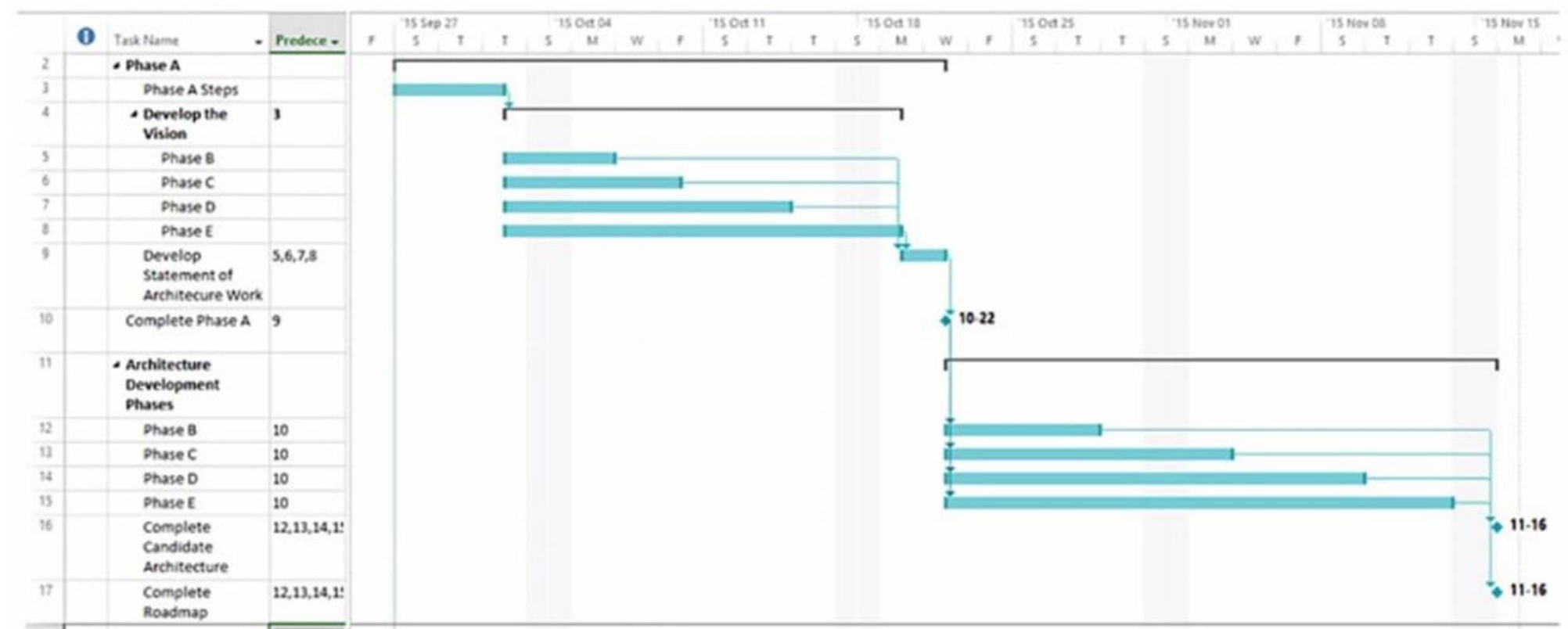
Answer: A

Explanation:

The ability to develop, use, and sustain the architecture of a particular enterprise using architecture to govern change is an EA Capability. An EA Capability is a set of skills, processes, roles, responsibilities, tools, and techniques that enable an enterprise to successfully develop and maintain its Enterprise Architecture and achieve its desired outcomes. An EA Capability is part of an enterprise's overall capability portfolio and should be aligned with its strategy and objectives. Reference: The TOGAF® Standard | The Open Group Website, Section 3.2 Preliminary Phase.

NEW QUESTION 2

Consider the following chart:



Which important concept for Enterprise Architecture Practitioners does it illustrate?

- A. Enterprise Architects must use Gantt charts to communicate with Stakeholders.
- B. An Enterprise Architecture must be developed in phases with a limited fixed duration.
- C. ADM phases must be run in a sequenced approach to produce the Architecture.
- D. ADM phases must be run simultaneously until the relevant information has been produced.

Answer: C

Explanation:

The chart shown is a Gantt chart, which is commonly used for project management to illustrate a project schedule. In the context of TOGAF (The Open Group Architecture Framework), which is a framework for enterprise architecture, this Gantt chart is demonstrating the sequenced approach to the Architecture Development Method (ADM). The ADM is the core process of TOGAF which provides a tested and repeatable process for developing architectures. The ADM is described as being iterative, over the whole process, between phases, and within phases. For each iteration of the ADM, a fresh decision must be taken about each of the parameters (scope, granularity, time period, and architecture assets).

The ADM consists of a number of phases that have to be followed in sequence:

- ? Preliminary Phase: Framework and principles
- ? Phase A: Architecture Vision
- ? Phase B: Business Architecture
- ? Phase C: Information Systems Architectures, including Data and Application Architectures
- ? Phase D: Technology Architecture
- ? Phase E: Opportunities and Solutions
- ? Phase F: Migration Planning
- ? Phase G: Implementation Governance
- ? Phase H: Architecture Change Management
- ? Requirements Management

Each phase is dependent on the outputs of the previous phase and the Requirements Management phase runs throughout. The Gantt chart clearly shows the dependency and sequence in which these phases occur, implying that a structured approach is followed to produce the enterprise architecture.

References:

- ? The TOGAF Standard, Version 9.2, a standard of The Open Group
- ? The TOGAF documentation available at <https://publications.opengroup.org/standards/architecture> and <https://publications.opengroup.org/guides/architecture>

NEW QUESTION 3

Complete the sentence The purpose of the Preliminary Phase is to _____.

- A. describe the target architecture
- B. define the enterprise strategy

- C. identify the stakeholders and their requirements
- D. architect an Enterprise Architecture Capability

Answer: D

Explanation:

The purpose of the Preliminary Phase is to architect an Enterprise Architecture Capability that meets the needs and expectations of the enterprise's stakeholders and supports and enables subsequent phases of architecture development and transition. This phase involves defining the scope, principles, framework, and governance for the Enterprise Architecture Capability. Reference: The TOGAF® Standard | The Open Group Website, Section 3.2 Preliminary Phase.

NEW QUESTION 4

What is used to structure architectural information in an orderly way so that it can be processed to meet stakeholder needs?

- A. A Stakeholder Map
- B. An Architecture Framework
- C. Content Metamodel
- D. An EA Library

Answer: C

Explanation:

? A content metamodel is a formal structure that defines the types of entities and relationships that are used to capture, store, filter, query, and represent architectural information in a way that supports consistency, completeness, and traceability¹².

? A stakeholder map is a tool that identifies and analyzes the key stakeholders and their interests, influence, and expectations in relation to the architecture³. It is not used to structure architectural information, but rather to understand the stakeholder needs and concerns.

? An architecture framework is a set of principles, guidelines, standards, and tools that provide a common structure and methodology for developing architectures⁴. It is not used to structure architectural information, but rather to guide the architecture development process and ensure alignment with the business strategy and objectives.

? An EA library is a repository that stores and manages the architecture artifacts, deliverables, and other relevant information produced and consumed during the architecture development and governance. It is not used to structure architectural information, but rather to provide access, security, and version control for the architecture content.

References: 1: The TOGAF Standard, Version 9.2 - Content Metamodel 2: TOGAF 9.2 Content Metamodel Framework - A Quick Guide - KnowledgeHut 3: The TOGAF Standard, Version 9.2 - Stakeholder Management 4: The TOGAF Standard, Version 9.2 - Architecture Framework : The TOGAF Standard, Version 9.2 - Architecture Repository

NEW QUESTION 5

Complete the following sentence:

Presenting different _____ and _____ to stakeholders helps architects to extract hidden agendas principles and requirements that could impact the final Target Architecture

- A. Alternatives Trade-offs
- B. Solutions Applications
- C. Architecture Views Architecture Viewpoints
- D. Business Scenarios Business Models

Answer: C

Explanation:

According to the TOGAF Standard, an architecture view is a representation of a system from the perspective of a related set of concerns¹. An architecture viewpoint is a specification of the conventions for a particular kind of architecture view¹. Presenting different architecture views and architecture viewpoints to stakeholders helps architects to extract hidden agendas, principles, and requirements that could impact the final target architecture. This is because different stakeholders may have different concerns and interests in the system, and by showing them how the system addresses their concerns from different perspectives, the architects can elicit more feedback and validation from them². For example, a business stakeholder may be interested in the business architecture view, which focuses on the business processes, functions, and capabilities of the system³. A security stakeholder may be interested in the enterprise security view, which addresses the security aspects of the system, such as confidentiality, integrity, and availability³. By presenting these views to the respective stakeholders, the architects can ensure that the system meets their expectations and needs, and also identify any potential issues or gaps that may affect the target architecture. References: 1: The TOGAF Standard, Version 9.2 - Architectural Artifacts - TheOpen Group¹; 2: Understanding TOGAF Views and Viewpoints in Enterprise Architecture²; 3: Developing Architecture Views - The Open Group⁴

NEW QUESTION 6

What should be put in place through organization structures, roles, responsibilities, skills and processes to carry out architectural activity effectively?

- A. An EA Capability
- B. An Enterprise Architecture
- C. An EA framework
- D. An EA repository

Answer: A

Explanation:

An EA Capability is the ability of an organization to perform enterprise architecture effectively and efficiently. It involves establishing and maintaining the appropriate organization structures, roles, responsibilities, skills, processes, tools, and governance mechanisms to support the development and use of enterprise architecture. An EA Capability enables the organization to align its business and IT strategies, deliver value from its investments, manage change and complexity, and improve its performance and agility¹² References: 1: The TOGAF Standard, Version 9.2, Part VI: Architecture Capability Framework, Chapter 44: Introduction 2: The TOGAF Standard, Version 9.2, Part VI: Architecture Capability Framework, Chapter 45: Establishing and Maintaining an Enterprise Architecture Capability

NEW QUESTION 7

Which of the following best describes the purpose of the Gap Analysis technique?

- A. To govern the architecture throughout its implementation process
- B. To develop a set of general rules and guidelines for the architecture
- C. To identify items omitted from the Target Architecture
- D. To allocate resources for architecture projects

Answer: C

Explanation:

The purpose of the Gap Analysis technique is similar to the previous question, but with a focus on the Target Architecture. The technique helps to identify the items that are not included or specified in the Target Architecture, such as capabilities, services, components, standards, or technologies. These items may be essential for achieving the vision and goals of the enterprise, or for addressing the stakeholder concerns and requirements. By identifying the items omitted from the Target Architecture, the technique helps to ensure that the architecture is comprehensive, feasible, and realistic.

NEW QUESTION 8

Consider the following statement.

Projects may cycle between ADM phases, in planned cycles covering multiple phases. What does it illustrate?

- A. Requirements management
- B. Iteration
- C. Implementation governance
- D. Enterprise Architecture

Answer: B

Explanation:

The statement "Projects may cycle between ADM phases, in planned cycles covering multiple phases" illustrates the concept of iteration, which is the process of repeating the ADM phases or steps within a phase to refine the architecture outputs and address the changing requirements and stakeholder concerns. Iteration can occur at different levels of granularity and scope, such as within a single phase, across multiple phases, or across the entire ADM cycle. Iteration can also be applied to different architecture domains, such as business, data, application, and technology. Iteration is a key feature of the ADM that enables the development of architectures that are fit for purpose, adaptable, and responsive to change. References: : The TOGAF Standard, Version 9.2, Part III: ADM Guidelines and Techniques, Chapter 24: Applying Iteration to the ADM

NEW QUESTION 9

Consider the following descriptions of deliverables consumed and produced across the TOGAF ADM cycle.

? General rules and guidelines, intended to be enduring and seldom amended, that inform and support the way in which an organization sets about fulfilling its mission

? The joint agreements between development partners and sponsors on the deliverables, quality, and fitness-for-purpose of an architecture.

? A document that is sent from the sponsoring organization to the architecture organization to trigger the start of an architecture development cycle

? A set of quantitative statements that outline what an implementation project must do in order to comply with the architecture.

Which deliverables match these descriptions?

- A. 1 Architecture Principles -2 Architecture Contracts - 3 Request for Architecture Work - 4 Architecture Requirements Specification
- B. 1 Architecture Contracts - 2 Architecture Requirements Specification - 3 Architecture Vision - 4 Architecture Principles
- C. 1 Architecture Requirements Specification -2 Architecture Principles - 3 Architecture Vision - 4 Architecture Contracts
- D. 1 Architecture Principles -2 Architecture Contracts - 3 Architecture Requirements Specification-4 Request for Architecture Work

Answer: A

Explanation:

According to the TOGAF standard, the deliverables that match the descriptions are as follows:

? 1 Architecture Principles: These are general rules and guidelines, intended to be enduring and seldom amended, that inform and support the way in which an organization sets about fulfilling its mission¹. They reflect a level of consensus among the various elements of the enterprise, and form the basis for making future IT decisions¹.

? 2 Architecture Contracts: These are the joint agreements between development partners and sponsors on the deliverables, quality, and fitness-for-purpose of an architecture². They are used to ensure that the architecture is implemented and governed according to the agreed-upon specifications and standards².

? 3 Request for Architecture Work: This is a document that is sent from the sponsoring organization to the architecture organization to trigger the start of an architecture development cycle³. It defines the scope, schedule, budget, deliverables, and stakeholders of the architecture project³.

? 4 Architecture Requirements Specification: This is a set of quantitative statements that outline what an implementation project must do in order to comply with the architecture⁴. It defines the requirements for each architecture domain, as well as the relationships and dependencies among them⁴.

References: 1: Architecture Principles 2: Architecture Contracts 3: Request for Architecture Work 4: Architecture Requirements Specification

NEW QUESTION 10

Which of the following best describes the class of information known as the Reference Library within the Architecture Repository?

- A. Guidelines and templates used to create new architectures
- B. Specifications to which architectures must conform
- C. A record of the governance activity across the enterprise
- D. Processes to support governance of the Architecture Repository

Answer: A

Explanation:

The class of information known as the Reference Library within the Architecture Repository contains guidelines and templates used to create new architectures. The Reference Library provides a set of resources that can be leveraged or customized for specific architecture development purposes. It includes generic building blocks, patterns, models, standards, frameworks, methods, techniques, best practices, etc. Reference: The TOGAF® Standard | The Open Group Website, Section 2.4 Architecture Repository.

NEW QUESTION 10

In which phase of the ADM cycle do building blocks become implementation-specific?

- A. Phase B
- B. Phase C
- C. Phase D
- D. Phase E

Answer: D

Explanation:

Building blocks are reusable components of business, IT, or architectural capability that can be combined to deliver architectures and solutions. Building blocks can be defined at various levels of detail, depending on the stage of architecture development. In the earlier phases of the ADM cycle (A to D), building blocks are defined in generic terms, such as logical or physical, to provide a high-level view of the architecture. In Phase E: Opportunities and Solutions, building blocks become implementation-specific, meaning that they are linked to specific products, standards, technologies, and vendors that are available in the market. This phase also identifies the delivery vehicles, such as projects, programs, or portfolios, that will realize the building blocks.

References: 1: The TOGAF Standard, Version 9.2, Part II: Architecture Development Method (ADM), Chapter 23: Phase E: Opportunities and Solutions 2: The TOGAF Standard, Version 9.2, Part IV: Architecture Content Framework, Chapter 36: Building Blocks

NEW QUESTION 12

Which of the following does the TOGAF standard describe as a package of functionality defined to meet business needs across an organization?

- A. An application
- B. A deliverable
- C. A solution architecture
- D. A building block

Answer: D

NEW QUESTION 14

When considering the scope of an architecture, what dimension considers to what level of detail the architecting effort should go?

- A. Project
- B. Breadth
- C. Depth
- D. Architecture Domains

Answer: C

Explanation:

The scope of an architecture is the extent and level of detail of the architecture work. The scope of an architecture can be defined along four dimensions: project, breadth, depth, and architecture domains. The project dimension considers the boundaries and objectives of the architecture project, such as the time frame, budget, resources, and deliverables. The breadth dimension considers the coverage and completeness of the architecture across the enterprise, such as the organizational units, business functions, processes, and locations. The depth dimension considers the level of detail and specificity of the architecture, such as the granularity, abstraction, and precision of the architectural elements and relationships. The architecture domains dimension considers the aspects or segments of the architecture, such as the business, data, application, and technology domains.

Therefore, the depth dimension is the one that considers to what level of detail the architecting effort should go.

References: : The TOGAF Standard, Version 9.2, Part III: ADM Guidelines and Techniques, Chapter 25: Architecture Scope : The TOGAF Standard, Version 9.2, Part III: ADM Guidelines and Techniques, Chapter 25.2: Scope Dimensions : The TOGAF Standard, Version 9.2, Part III: ADM Guidelines and Techniques, Chapter 25.2.1: Project, Breadth, Depth, and Architecture Domains

NEW QUESTION 16

Complete the sentence. The four purposes that typically frame the planning horizon, depth and breadth of an Architecture Project, and the contents of the EA Repository are Strategy, Portfolio,

- A. Project, and Solution Delivery.
- B. Subordinate, and Superior Architecture.
- C. Discreet, and Cohesive.
- D. Segment, and End-to-end Target Architecture.

Answer: D

Explanation:

The planning horizon, depth, and breadth of an Architecture Project, along with the contents of the EA Repository, are typically framed by Strategy, Portfolio, Segment, and End-to-end Target Architecture. The 'Segment' refers to a part of the organization, typically addressed in a Segment Architecture, while 'End-to-end Target Architecture' encompasses the complete view of the planned architecture across the entire organization.

NEW QUESTION 20

Which one of the following classes of information within the Architecture Repository would typically contain a list of the applications in use within the enterprise?

- A. Reference Library
- B. Architecture Metamodel
- C. Architecture Landscape
- D. Governance Log

Answer: C

Explanation:

The Architecture Landscape is a class of information within the Architecture Repository that shows an architectural view of the building blocks that are in use within the organization today (the Baseline Architecture), as well as those that are planned for the future (the Target Architecture). The Architecture Landscape typically contains a list of the applications in use within the enterprise, along with their relationships and dependencies, as well as other relevant architectural information. The Architecture Landscape helps to identify opportunities for re-use, consolidation, or retirement of existing applications, as well as gaps or overlaps in the current or future architecture. References: : The TOGAF Standard, Version 9.2, Part IV: Architecture Content Framework, Chapter 34: Architecture Landscape : The TOGAF Standard, Version 9.2, Part VI: Architecture Capability Framework, Chapter 47: Architecture Repository

NEW QUESTION 25

Which of the following supports the need to govern Enterprise Architecture?

- A. The Architecture Project mandates the governance of the target architecture
- B. The TOGAF standard cannot be used without executive governance
- C. Best practice governance enables the organization to control value realization
- D. The Stakeholders preferences may go beyond the architecture project scope and needs control

Answer: C

Explanation:

This statement best supports the need to govern Enterprise Architecture. Best practice governance enables the organization to control value realization by ensuring that architectures are aligned with the enterprise's strategy and objectives, meet the quality and performance requirements, and deliver the expected benefits and outcomes. The Architecture Project does not mandate the governance of the target architecture, but rather follows the governance framework established by the enterprise. The TOGAF standard can be used without executive governance, but it is recommended that executive sponsorship and support are obtained for successful architecture development and transition. The Stakeholders preferences may go beyond the architecture project scope and need control, but this is not the primary reason for governing Enterprise Architecture. Reference: The TOGAF® Standard | The Open Group Website, Section 3.3.6 Architecture Governance.

NEW QUESTION 29

Complete the sentence The Architecture Landscape is divided into levels known as .

- A. Gaps Plateaus, and Target Architectures
- B. Baselin
- C. Transition and To Be Architectures
- D. Segment Strategic and Capability Architectures
- E. Transitional Complete and incremental Architectures

Answer: C

Explanation:

The Architecture Landscape is divided into levels known as Segment Strategic and Capability Architectures. These levels correspond to different scopes and purposes of architectures within an enterprise. Segment Architectures are architectures that address specific business units, functions, or processes within an enterprise. Strategic Architectures are architectures that provide a high-level view of the enterprise's vision, goals, and direction. Capability Architectures are architectures that address specific business capabilities or services that span multiple segments or domains. Reference: The TOGAF® Standard | The Open Group Website, Section 2.4 Architecture Repository.

NEW QUESTION 30

Complete the sentence When considering agile development Architecture to Support Project will identify what products the Enterprise needs the boundary of the products and what constraints a product owner has. this defines the Enterprise's .

- A. operations
- B. backlog
- C. workflow management
- D. lifecycle economics

Answer: B

Explanation:

When considering agile development, Architecture to Support Project will identify what products the enterprise needs, the boundary of the products, and what constraints a product owner has. This defines the enterprise's backlog. A backlog is a list of features or tasks that need to be done to deliver a product or service. It is prioritized by the product owner based on the value and urgency of each item. Reference: The TOGAF® Standard | The Open Group Website, Section 3.3.5 Architecture to Support Project.

NEW QUESTION 31

Which of the following is a responsibility of an Architecture Board?

- A. Determining the scope of an architecture compliance review
- B. Allocating resources for architecture projects
- C. Conducting assessments of the maturity level of architecture discipline within the organization
- D. Achieving consistency between sub-architectures

Answer: D

Explanation:

One of the key responsibilities of an Architecture Board within the context of TOGAF is to achieve consistency between sub-architectures. This board is typically responsible for overseeing the development and maintenance of the enterprise architecture, ensuring that it aligns with the organization's overall strategy and objectives. They play a critical role in ensuring that all sub-architectures (like Business Architecture, Data Architecture, Application Architecture, and Technology Architecture) work together cohesively and support the overall enterprise architecture vision and strategy.

NEW QUESTION 34

.....

Thank You for Trying Our Product

We offer two products:

1st - We have Practice Tests Software with Actual Exam Questions

2nd - Questions and Answers in PDF Format

OGEA-101 Practice Exam Features:

- * OGEA-101 Questions and Answers Updated Frequently
- * OGEA-101 Practice Questions Verified by Expert Senior Certified Staff
- * OGEA-101 Most Realistic Questions that Guarantee you a Pass on Your FirstTry
- * OGEA-101 Practice Test Questions in Multiple Choice Formats and Updatesfor 1 Year

100% Actual & Verified — Instant Download, Please Click
[Order The OGEA-101 Practice Test Here](#)