

PMI

Exam Questions CAPM

Certified Associate in Project Management (PMI-100)



NEW QUESTION 1

- (Exam Topic 3)

Which type of analysis is used to examine project results through time to determine if performance is improving or deteriorating?

- A. Control chart
- B. Earned value
- C. Variance
- D. Trend

Answer: D

NEW QUESTION 2

- (Exam Topic 3)

When does Monitor and Control Risks occur?

- A. At project initiation
- B. During work performance analysis
- C. Throughout the life of the project
- D. At project milestones

Answer: C

NEW QUESTION 3

- (Exam Topic 3)

Which of the following involves making information available to project stakeholders in a timely manner?

- A. Plan Communications
- B. Performance reporting
- C. Project status reports
- D. Distribute Information

Answer: D

NEW QUESTION 4

- (Exam Topic 3)

An electronics firm authorizes a new project to develop a faster, cheaper, and smaller laptop after improvements in the industry and electronics technology. With which of the following strategic considerations is this project mainly concerned?

- A. Customer request
- B. Market demand
- C. Technological advance
- D. Strategic opportunity

Answer: C

NEW QUESTION 5

- (Exam Topic 3)

Project or phase closure guidelines or requirements, historical information, and the lessons learned knowledge base are examples of which input to the Close Project or Phase process?

- A. Organizational process assets
- B. A work breakdown structure
- C. The project management plan
- D. Enterprise environmental factors

Answer: A

NEW QUESTION 6

- (Exam Topic 3)

Which of the following consists of the detailed project scope statement and its associated WBS and WBS dictionary?

- A. Scope plan
- B. Product scope
- C. Scope management plan
- D. Scope baseline

Answer: D

NEW QUESTION 7

- (Exam Topic 3)

Which type of analysis systemically gathers and analyzes qualitative and quantitative information to determine which interests should be taken into account throughout the project?

- A. Product
- B. Cost-benefit

- C. Stakeholder
- D. Research

Answer: C

NEW QUESTION 8

- (Exam Topic 3)

A procurement management plan is a subsidiary of which other type of plan?

- A. Resource plan
- B. Project management plan
- C. Cost control plan
- D. Expected monetary value plan

Answer: B

NEW QUESTION 9

- (Exam Topic 3)

Which document includes the project scope, major deliverables, assumptions, and constraints?

- A. Project charter
- B. Project scope statement
- C. Scope management plan
- D. Project document updates

Answer: B

NEW QUESTION 10

- (Exam Topic 3)

Identifying major deliverables, deciding if adequate cost estimates can be developed, and identifying tangible components of each deliverable are all part of which of the following?

- A. Work breakdown structure
- B. Organizational breakdown structure
- C. Resource breakdown structure
- D. Bill of materials

Answer: A

NEW QUESTION 10

- (Exam Topic 3)

When is a Saliience Model used?

- A. In a work breakdown structure (WBS)
- B. During quality assurance
- C. In stakeholder analysis
- D. During quality control (QC)

Answer: C

NEW QUESTION 15

- (Exam Topic 3)

Organizational planning impacts projects by means of project prioritization based on risk, funding, and an organizations:

- A. Budget plan
- B. Resource plan
- C. Scope plan
- D. Strategic plan

Answer: D

NEW QUESTION 18

- (Exam Topic 3)

Which is the Define Scope technique used to generate different approaches to execute and perform the work of the project?

- A. Build v
- B. buy
- C. Expert judgment
- D. Alternatives identification
- E. Product analysis

Answer: C

NEW QUESTION 23

- (Exam Topic 3)

Which of the following statements best describes the influence of stakeholders and the cost of changes as project time advances?

- A. The influence of the stakeholders increases, the cost of changes increases.
- B. The influence of the stakeholders decreases, the cost of changes increases.
- C. The influence of the stakeholders increases, the cost of changes decreases.
- D. The influence of the stakeholders decreases, the cost of changes decreases.

Answer: B

NEW QUESTION 25

- (Exam Topic 3)

What is the term assigned to products or services having the same functional use but different technical characteristics?

- A. Scope
- B. Quality
- C. Specification
- D. Grade

Answer: D

NEW QUESTION 27

- (Exam Topic 3)

During which process group is the quality policy determined?

- A. Initiating
- B. Executing
- C. Planning
- D. Controlling

Answer: C

NEW QUESTION 30

- (Exam Topic 3)

Conflict should be best addressed in which manner?

- A. Early, in private, using a direct, collaborative approach
- B. Early, in public, using an indirect, collaborative approach
- C. Early, in private, using an indirect, cooperative approach
- D. As late as possible, in public, using a direct, confrontational approach

Answer: A

NEW QUESTION 33

- (Exam Topic 3)

What name(s) is (are) associated with the Plan-Do-Check-Act cycle?

- A. Pareto
- B. Ishikawa
- C. Shewhart-Deming
- D. Delphi

Answer: C

NEW QUESTION 34

- (Exam Topic 3)

Which of the following is a narrative description of products, services, or results to be delivered by a project?

- A. Project statement of work
- B. Business case
- C. Accepted deliverable
- D. Work performance information

Answer: A

NEW QUESTION 35

- (Exam Topic 3)

Organizations perceive risks as:

- A. events that will inevitably impact project and organizational objectives.
- B. the effect of uncertainty on their project and organizational objectives.
- C. events which could have a negative impact on project and organizational objectives.
- D. the negative impact of undesired events on their project and organizational objectives.

Answer: B

NEW QUESTION 39

- (Exam Topic 3)

Which of the seven basic quality tools is especially useful for gathering attributes data while performing inspections to identify defects?

- A. Histograms
- B. Scatter diagrams
- C. Flowcharts
- D. Checksheets

Answer: D

NEW QUESTION 43

- (Exam Topic 3)

Which of the following statements correctly characterizes pull communication?

- A. It includes letters, memos, reports, emails, and faxes.
- B. It requires recipients to access communication content at their own discretion.
- C. It is the most efficient way to ensure a common understanding among all participants.
- D. It is primarily used when the volume of information to be transferred is minimal.

Answer: B

NEW QUESTION 47

- (Exam Topic 3)

What are the formal and informal policies, procedures, and guidelines that could impact how the project's scope is managed?

- A. Organizational process assets
- B. Enterprise environmental factors
- C. Project management processes
- D. Project scope management plan

Answer: A

NEW QUESTION 51

- (Exam Topic 3)

What is the difference between the critical path and the critical chain?

- A. Scope changes
- B. Resource limitations
- C. Risk analysis
- D. Quality audits

Answer: B

NEW QUESTION 56

- (Exam Topic 3)

Which process involves documenting the actions necessary to define, prepare, integrate, and coordinate all subsidiary plans?

- A. Collect Requirements
- B. Direct and Manage Project Execution
- C. Monitor and Control Project Work
- D. Develop Project Management Plan

Answer: D

NEW QUESTION 57

- (Exam Topic 3)

Which Develop Schedule tool and technique produces a theoretical early start date and late start date?

- A. Critical path method
- B. Variance analysis
- C. Schedule compression
- D. Schedule comparison bar charts

Answer: A

NEW QUESTION 59

- (Exam Topic 3)

Which illustrates the connection between work that needs to be done and its project team members?

- A. Work breakdown structure (WBS)
- B. Network diagrams
- C. Staffing management plan
- D. Responsibility assignment matrix (RAM)

Answer: D

NEW QUESTION 60

- (Exam Topic 3)

In an organization with a projectized organizational structure, who controls the project budget?

- A. Functional manager
- B. Project manager
- C. Program manager
- D. Project management office

Answer: B

NEW QUESTION 61

- (Exam Topic 3)

Which tool is used to develop technical details within the project management plan?

- A. Expert judgment
- B. Project management methodology
- C. Project management information system (PMIS)
- D. Project selection methods

Answer: A

NEW QUESTION 65

- (Exam Topic 3)

Which tool or technique of Plan Quality involves comparing actual or planned practices to those of other projects to generate ideas for improvement and provide a basis by which to measure performance?

- A. Histogram
- B. Quality audits
- C. Benchmarking
- D. Performance measurement analysis

Answer: C

NEW QUESTION 68

- (Exam Topic 3)

Which Project Management Process Group includes Collect Requirements, Define Activities, Sequence Activities, Perform Qualitative Risk Analysis, and Perform Quantitative Risk Analysis?

- A. Initiating
- B. Monitoring and Controlling
- C. Planning
- D. Closing

Answer: C

NEW QUESTION 69

- (Exam Topic 3)

What is one of the objectives of Project Risk Management?

- A. Decrease the probability and impact of an event on project objectives.
- B. Distinguish between a project risk and a project issue so that a risk mitigation plan can be put in place.
- C. Increase the probability and impact of positive events.
- D. Removal of project risk.

Answer: C

NEW QUESTION 73

- (Exam Topic 3)

What is the name of the statistical method that helps identify which factors may influence specific variables of a product or process under development or in production?

- A. Failure modes and effects analysis
- B. Design of experiments
- C. Quality checklist
- D. Risk analysis

Answer: B

NEW QUESTION 76

- (Exam Topic 3)

Which is a tool or technique used in Define Scope?

- A. Templates, forms, and standards
- B. Change requests
- C. Product analysis

D. Project assumptions

Answer: C

NEW QUESTION 79

- (Exam Topic 3)

When can pre-assignment of project team members occur?

- A. When the project uses capital expenditures
- B. When the required staff can be acquired from outside sources
- C. When the project would be ignored due to travel expenses
- D. When the project is the result of specific people being promised as part of a competitive proposal

Answer: D

NEW QUESTION 83

- (Exam Topic 3)

An output of Control Schedule is:

- A. A project schedule network diagram
- B. A schedule management plan
- C. Schedule data
- D. Schedule forecasts

Answer: D

NEW QUESTION 86

- (Exam Topic 3)

What is the name of a graphic display of project team members and their reporting relationships?

- A. Role dependencies chart
- B. Reporting flow diagram
- C. Project organization chart
- D. Project team structure diagram

Answer: C

NEW QUESTION 89

- (Exam Topic 3)

The integrative nature of project management requires which Process Group to interact with the other Process Groups?

- A. Planning
- B. Executing
- C. Monitoring and Controlling
- D. Project Management

Answer: C

NEW QUESTION 93

- (Exam Topic 3)

Which defines the portion of work included in a contract for items being purchased or acquired?

- A. Procurement management plan
- B. Evaluation criteria
- C. Work breakdown structure
- D. Procurement statement of work

Answer: D

NEW QUESTION 95

- (Exam Topic 3)

A project manager seeking insight on previous stakeholder management plans and their effectiveness should evaluate:

- A. Historical information and the lessons-learned database.
- B. Historical information and the stakeholder register.
- C. Organizational process assets and the lessons-learned database.
- D. Project documents and historical information.

Answer: A

NEW QUESTION 100

- (Exam Topic 3)

What is the definition of Direct and Manage Project Execution?

- A. Integrating all planned activities

- B. Performing the activities included in the plan
- C. Developing and maintaining the plan
- D. Execution of deliverables

Answer: B

NEW QUESTION 103

- (Exam Topic 3)

What type of planning is used where the work to be accomplished in the near term is planned in detail, while work in the future is planned at a higher level?

- A. Finish-to-start planning
- B. Rolling wave planning
- C. Short term planning
- D. Dependency determination

Answer: B

NEW QUESTION 108

- (Exam Topic 3)

The procurement process that documents agreements and related documentation for future reference is known as:

- A. Plan Procurements.
- B. Control Procurements.
- C. Close Procurements.
- D. Conduct Procurements.

Answer: C

NEW QUESTION 109

- (Exam Topic 2)

Which project risk listed in the table below is most likely to occur?

Project Risks	Probability	Impact
Risk 1	L	M
Risk 2	H	H
Risk 3	L	L
Risk 4	M	L

- A. 1
- B. 2
- C. 3
- D. 4

Answer: B

NEW QUESTION 112

- (Exam Topic 2)

An input to the Control Quality process is:

- A. Activity attributes
- B. Quality control measurements
- C. Enterprise environmental factors
- D. Deliverables

Answer: D

NEW QUESTION 116

- (Exam Topic 2)

At the completion of a project, a report is prepared that details the outcome of the research conducted on a global trend during the project. Which item did this project create?

- A. Result
- B. Product
- C. Service
- D. Improvement

Answer: A

NEW QUESTION 117

- (Exam Topic 2)

High-level project risks are included in which document?

- A. Business case
- B. Risk breakdown structure
- C. Project charter
- D. Risk register

Answer: C

NEW QUESTION 119

- (Exam Topic 2)

A disadvantage associated with virtual teams is that they:

- A. Require communication technology that is not readily available.
- B. Create difficulties when including people with disabilities.
- C. Often cannot accommodate teams that work different hours or shifts.
- D. Create the possibility for misunderstandings to arise.

Answer: D

NEW QUESTION 123

- (Exam Topic 2)

Which key interpersonal skill of a project manager is defined as the strategy of sharing power and relying on interpersonal skills to convince others to cooperate toward common goals?

- A. Collaboration
- B. Negotiation
- C. Decision making
- D. Influencing

Answer: D

NEW QUESTION 128

- (Exam Topic 2)

The most appropriate project life cycle model for an environment with a high level of change and extensive stakeholder involvement in projects is:

- A. adaptive
- B. reflexive
- C. predictive
- D. iterative

Answer: A

NEW QUESTION 131

- (Exam Topic 2)

Which Manage Communications tool or technique focuses on identifying and managing barriers?

- A. Communication methods
- B. Information technology
- C. Communication models
- D. Information management systems

Answer: C

NEW QUESTION 133

- (Exam Topic 2)

In a typical project, project managers spend most of their time:

- A. Estimating
- B. Scheduling
- C. Controlling
- D. Communicating

Answer: D

NEW QUESTION 134

- (Exam Topic 2)

When closing a project or phase, part of the process may require the use of which type of analysis?

- A. Reserve analysis
- B. Regression analysis
- C. Document analysis
- D. Product analysis

Answer: B

NEW QUESTION 137

- (Exam Topic 2)

Which action is included in the Control Costs process?

- A. Identify how the project costs will be planned, structured, and controlled
- B. Determine policies, objectives, and responsibilities to satisfy stakeholder needs
- C. Develop an approximation of the monetary resources needed to complete project activities
- D. Monitor cost performance to isolate and understand variances from the approved cost baseline

Answer: D

NEW QUESTION 138

- (Exam Topic 2)

Which document in the project management plan can be updated in the Plan Procurement Management process?

- A. Budget estimates
- B. Risk matrix
- C. Requirements documentation
- D. Procurement documents

Answer: C

NEW QUESTION 140

- (Exam Topic 2)

Which process is conducted from project inception through completion and is ultimately the responsibility of the project manager?

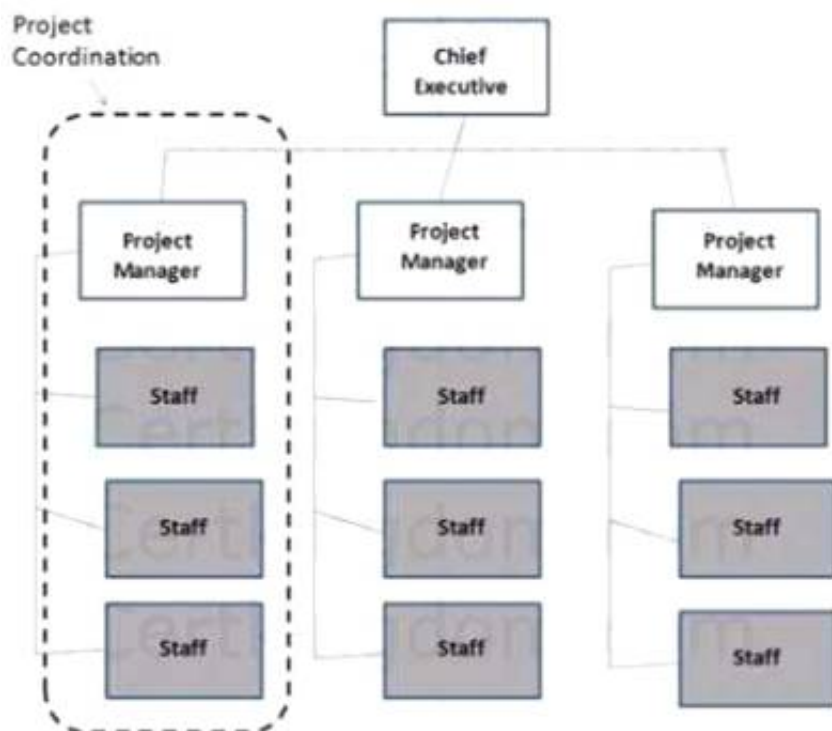
- A. Control Quality
- B. Monitor and Control Project Work
- C. Control Scope
- D. Perform Integrated Change Control

Answer: D

NEW QUESTION 142

- (Exam Topic 2)

Which type of organizational structure is displayed in the diagram provided?



- A. Balanced matrix
- B. Projectized
- C. Strong matrix
- D. Functional

Answer: B

NEW QUESTION 145

- (Exam Topic 2)

The following chart contains information about the tasks in a project.

Task	PV	AC	EV
1	10,000	10,000	10,000
2	10,000	8,000	10,000
3	10,000	8,000	8,000
4	9,000	12,000	10,000
5	10,000	12,000	12,000
6	10,000	10,000	12,000
7	12,000	12,000	10,000
8	10,000	8,000	9,000
9	12,000	10,000	11,000

Based on the chart, what is the cost variance (CV) for Task 6?

- A. -2,000
- B. 1,000
- C. 2,000

Answer: D

NEW QUESTION 147

- (Exam Topic 2)

The risk response strategy in which the project team acts to reduce the probability of occurrence or impact of a risk is known as:

- A. exploit
- B. avoid
- C. mitigate
- D. share

Answer: C

NEW QUESTION 150

- (Exam Topic 2)

Which is an enterprise environmental factor?

- A. Marketplace conditions
- B. Policies and procedures
- C. Project files from previous projects
- D. Lessons learned from previous projects

Answer: A

NEW QUESTION 154

- (Exam Topic 2)

Power, urgency, and legitimacy are attributes of which stakeholder classification model?

- A. Salience
- B. Influence/impact
- C. Power/interest
- D. Power/influence

Answer: A

NEW QUESTION 157

- (Exam Topic 2)

A project manager requesting industry groups and consultants to recommend project intervention is relying on:

- A. Communication models.
- B. Stakeholder participation.
- C. Expert judgment
- D. Enterprise environmental factors.

Answer: C

NEW QUESTION 161

- (Exam Topic 2)

Outputs of the Control Communications process include:

- A. expert judgment and change requests.
- B. work performance information and change requests.
- C. organizational process asset updates and an issue log.
- D. project management plan updates and an issue log.

Answer: B

NEW QUESTION 165

- (Exam Topic 2)

Stakeholder communication requirements should be included as a component of:

- A. enterprise environmental factors
- B. organizational process assets
- C. the project management plan
- D. the stakeholder register

Answer: C

NEW QUESTION 169

- (Exam Topic 2)

In complex projects/ initiating processes should be completed:

- A. Within a work package.
- B. In each phase of the project.
- C. To estimate schedule constraints.
- D. To estimate resource allocations.

Answer: B

NEW QUESTION 174

- (Exam Topic 2)

At the start of a typical project life cycle, costs are:

- A. low, peak as work is carried out, and drop as the project nears the end.
- B. low, become steady as work is carried out, and increase as the project nears the end.
- C. high, drop as work is carried out, and increase as the project nears the end.
- D. high, become low as work is carried out, and drop as the project nears the end.

Answer: A

NEW QUESTION 179

- (Exam Topic 2)

When painting a bedroom, preparing the walls can be done while the paint is being chosen. This is an example of a:

- A. lead
- B. lag
- C. mandatory dependency
- D. internal dependency

Answer: A

NEW QUESTION 184

- (Exam Topic 2)

The process of defining how the project scope will be validated and controlled is known as:

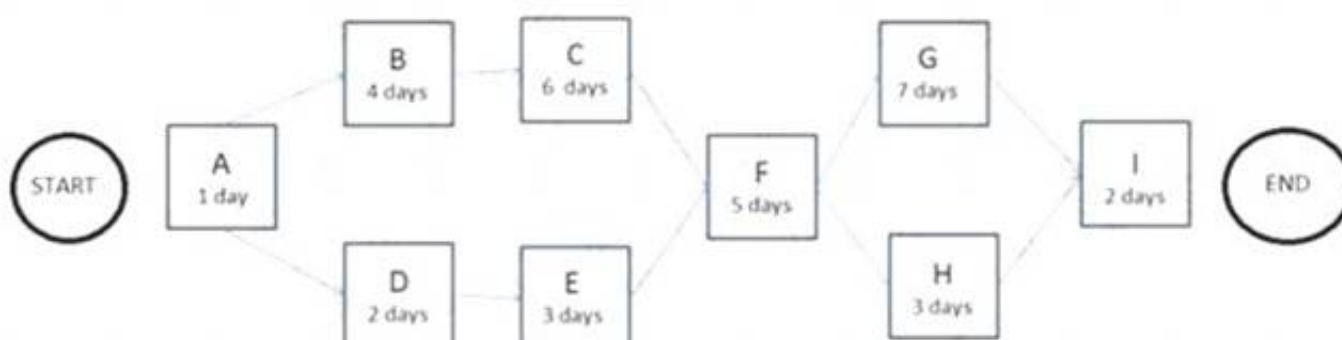
- A. Define Scope.
- B. Develop Project Management Plan.
- C. Plan Scope Management.
- D. Plan Quality Management.

Answer: C

NEW QUESTION 185

- (Exam Topic 2)

The following is a network diagram for a project.



The free float for Activity E is how many days?

- A. 2
- B. 3
- C. 5
- D. 8

Answer: C

NEW QUESTION 187

- (Exam Topic 2)

Success is measured by benefits realization for a:

- A. strategic plan
- B. project
- C. portfolio
- D. program

Answer: C

NEW QUESTION 189

- (Exam Topic 2)

A risk that arises as a direct result of implementing a risk response is called a:

- A. contingent risk
- B. residual risk
- C. potential risk
- D. secondary risk

Answer: D

NEW QUESTION 194

- (Exam Topic 2)

An input to the Perform Integrated Change Control process is:

- A. expert judgment
- B. seller proposals
- C. the project charter
- D. the project management plan

Answer: D

NEW QUESTION 197

- (Exam Topic 2)

The component of the human resource management plan that includes ways in which team members can obtain certifications that support their ability to benefit the project is known as:

- A. recognition and rewards
- B. compliance
- C. staff acquisition
- D. training needs

Answer: D

NEW QUESTION 201

- (Exam Topic 2)

Which process is usually a rapid and cost-effective means of establishing priorities for Plan Risk Responses?

- A. Identify Risks
- B. Plan Risk Management
- C. Perform Qualitative Risk Analysis
- D. Perform Quantitative Risk Analysis

Answer: C

NEW QUESTION 203

- (Exam Topic 2)

Specification of both the deliverables and the processes is the focus of:

- A. Change control
- B. Configuration control
- C. Project monitoring and control
- D. Issue control

Answer: B

NEW QUESTION 204

- (Exam Topic 2)

The following chart contains information about the tasks in a project.

Task	PV	AC	EV
1	10,000	10,000	10,000
2	10,000	8,000	10,000
3	10,000	8,000	8,000
4	9,000	12,000	10,000
5	10,000	12,000	12,000
6	10,000	10,000	12,000
7	12,000	12,000	10,000
8	10,000	8,000	9,000
9	12,000	10,000	11,000

Based on the chart, what is the schedule performance index (SPI) for Task 4?

- A. 0.83
- B. 0.9
- C. 1.11
- D. 1.33

Answer: C

NEW QUESTION 208

- (Exam Topic 2)

In which phase of team building activities do team members begin to work together and adjust their work habits and behavior to support the team?

- A. Performing
- B. Storming
- C. Norming
- D. Forming

Answer: C

NEW QUESTION 210

- (Exam Topic 2)

Impacts to other organizational areas, levels of service, and acceptance criteria are typical components of which document?

- A. Business case
- B. Work breakdown structure
- C. Requirements documentation
- D. Risk register

Answer: C

NEW QUESTION 211

- (Exam Topic 2)

A tool and technique used in the Develop Project Charter process is:

- A. change control tools
- B. expert judgment
- C. meetings
- D. analytical techniques

Answer: B

NEW QUESTION 212

- (Exam Topic 2)

The process of obtaining seller responses, selecting a seller, and awarding a contract is called:

- A. Close Procurements.
- B. Control Procurements.
- C. Plan Procurements.
- D. Conduct Procurements.

Answer: D

NEW QUESTION 215

- (Exam Topic 2)

Which basic quality tool explains a change in the dependent variable in relationship to a change observed in the corresponding independent variable?

- A. Cause-and-effect diagram
- B. Histogram
- C. Control chart
- D. Scatter diagram

Answer: D

NEW QUESTION 219

- (Exam Topic 2)

Which quality tool incorporates the upper and lower specification limits allowed within an agreement?

- A. Control chart
- B. Flowchart
- C. Checksheet
- D. Pareto diagram

Answer: A

NEW QUESTION 221

- (Exam Topic 2)

Which type of probability distribution is used to represent uncertain events such as the outcome of a test or a possible scenario in a decision tree?

- A. Uniform
- B. Continuous
- C. Discrete
- D. Linear

Answer: C

NEW QUESTION 226

- (Exam Topic 1)

The number of potential communication channels for a project with 5 stakeholders is:

- A. 10.
- B. 12.
- C. 20.
- D. 24.

Answer: A

NEW QUESTION 228

- (Exam Topic 1)

Which conflict resolution technique searches for solutions that bring some degree of satisfaction to all parties in order to temporarily or partially resolve the conflict?

- A. Force/direct
- B. Withdraw/avoid
- C. Compromise/reconcile
- D. Collaborate/problem solve

Answer: C

NEW QUESTION 232

- (Exam Topic 1)

Which tool or technique is used in the Plan Scope Management process?

- A. Document analysis
- B. Observations
- C. Product analysis
- D. Expert judgment

Answer: D

NEW QUESTION 233

- (Exam Topic 1)

Risk categorization is a tool or technique used in which process?

- A. Plan Risk Responses
- B. Plan Risk Management
- C. Perform Qualitative Risk Analysis
- D. Perform Quantitative Risk Analysis

Answer: C

NEW QUESTION 237

- (Exam Topic 1)

What is the schedule performance index (SPI) if the planned value (PV) is \$100, the actual cost (AC) is \$150, and the earned value (EV) is \$50?

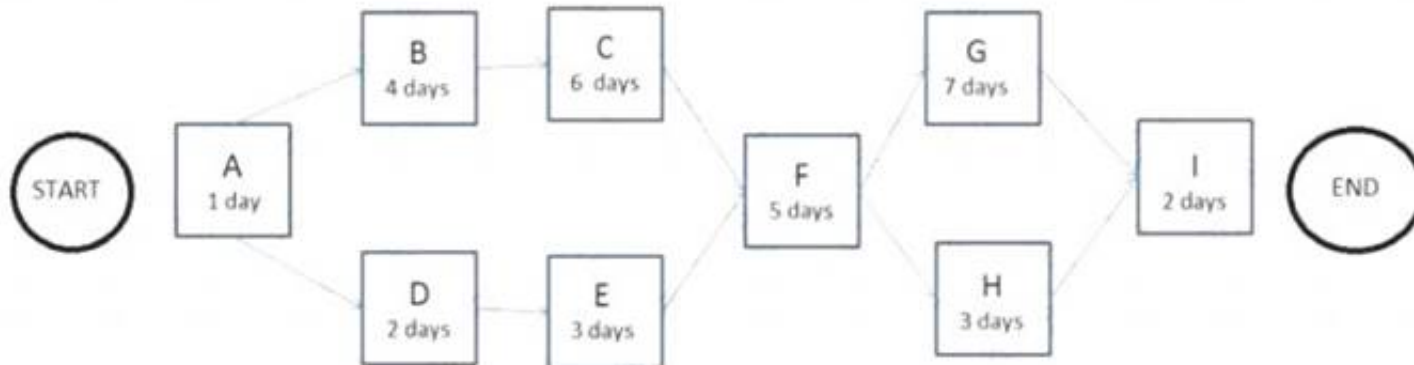
- A. 0.50
- B. 0.67
- C. 1.50
- D. 2.00

Answer: A

NEW QUESTION 240

- (Exam Topic 2)

The following is a network diagram for a project.



What is the critical path for the project?

- A. A-B-C-F-G-I
- B. A-B-C-F-H-I
- C. A-D-E-F-G-I
- D. A-D-E-F-H-I

Answer: A

NEW QUESTION 242

- (Exam Topic 1)

Which tool or technique is used in the Develop Project Management Plan process?

- A. Pareto diagram
- B. Performance reporting
- C. SWOT analysis
- D. Expert judgment

Answer: D

NEW QUESTION 245

- (Exam Topic 1)

Which Control Quality tool is also known as an arrow diagram?

- A. Matrix diagram
- B. Affinity diagram
- C. Tree diagram
- D. Activity network diagram

Answer: D

NEW QUESTION 247

- (Exam Topic 1)

An output of the Plan Quality Management process is:

- A. A process improvement plan,
- B. Quality control measurements.
- C. Work performance information,
- D. The project management plan.

Answer: A

NEW QUESTION 250

- (Exam Topic 1)

The iterative and interactive nature of the Process Groups creates the need for the processes in which Knowledge Area?

- A. Project Communications Management
- B. Project Integration Management
- C. Project Risk Management
- D. Project Scope Management

Answer: B

NEW QUESTION 254

- (Exam Topic 1)

Units of measure, level of precision, level of accuracy, control thresholds, and rules of performance measurement are examples of items that are established in the:

- A. Cost management plan.
- B. Work performance information.
- C. Quality management plan.
- D. Work breakdown structure.

Answer: A

NEW QUESTION 258

- (Exam Topic 1)

A tool or technique used in the Control Procurements process is:

- A. Expert judgment.
- B. Performance reporting.
- C. Bidder conferences.
- D. Reserve analysis.

Answer: B

NEW QUESTION 261

- (Exam Topic 1)

Which tool or technique is used to manage change requests and the resulting decisions?

- A. Change control tools
- B. Expert judgment
- C. Delphi technique
- D. Change log

Answer: A

NEW QUESTION 263

- (Exam Topic 1)

Which item is a formal proposal to modify any document, deliverable, or baseline?

- A. Change request
- B. Requirements documentation
- C. Scope baseline
- D. Risk urgency assessment

Answer: A

NEW QUESTION 267

- (Exam Topic 1)

Which item is an example of personnel assessment?

- A. Resource calendar
- B. Tight matrix
- C. Team-building activity
- D. Focus group

Answer: D

NEW QUESTION 272

- (Exam Topic 1)

Identify Risks is part of which Process Group?

- A. Planning
- B. Executing
- C. Closing
- D. Initiating

Answer: A

NEW QUESTION 276

- (Exam Topic 1)

The definition of when and how often the risk management processes will be performed throughout the project life cycle is included in which risk management plan component?

- A. Timing
- B. Methodology
- C. Risk categories
- D. Budgeting

Answer: A

NEW QUESTION 281

- (Exam Topic 1)

Which risk management strategy seeks to eliminate the uncertainty associated with a particular upside risk by ensuring that the opportunity is realized?

- A. Enhance
- B. Share
- C. Exploit
- D. Accept

Answer: C

NEW QUESTION 282

- (Exam Topic 1)

Which Define Activities output extends the description of the activity by identifying the multiple components associated with each activity?

- A. Project document updates
- B. Activity list
- C. Activity attributes
- D. Project calendars

Answer: C

NEW QUESTION 284

- (Exam Topic 1)

Which item is an input to the Define Activities process?

- A. Schedule data
- B. Activity list
- C. Risk register
- D. Scope baseline

Answer: D

NEW QUESTION 287

- (Exam Topic 1)

Which grid shows which resources are tied to work packages?

- A. Work breakdown structure (WBS)
- B. Responsibility assignment matrix (RAM)
- C. Project assignment chart
- D. Personnel assignment matrix

Answer: B

NEW QUESTION 288

- (Exam Topic 1)

Market conditions and published commercial information are examples of which input to the Estimate Costs process?

- A. Scope baseline
- B. Organizational process assets
- C. Enterprise environmental factors
- D. Risk register

Answer: C

NEW QUESTION 293

- (Exam Topic 1)

In a project, total float measures the:

- A. Ability to shuffle schedule activities to lessen the duration of the project.
- B. Amount of time an activity can be extended or delayed without altering the project finish date.
- C. Cost expended to restore order to the project schedule after crashing the schedule.
- D. Estimate of the total resources needed for the project after performing a forward pass.

Answer: B

NEW QUESTION 296

- (Exam Topic 1)

In the Plan Stakeholder Management process, expert judgment is used to:

- A. Provide information needed to plan appropriate ways to engage project stakeholders.
- B. Ensure comprehensive identification and listing of new stakeholders.
- C. Analyze the information needed to develop the project scope statement.

D. Decide the level of engagement of the stakeholders at each required stage.

Answer: D

NEW QUESTION 297

- (Exam Topic 1)

Reserve analysis is a tool and technique used in which process?

- A. Plan Risk Management
- B. Plan Risk Responses
- C. Identify Risks
- D. Control Risks

Answer: D

NEW QUESTION 301

- (Exam Topic 1)

Which earned value management (EVM) metric is a measure of the cost efficiency of budgeted resources expressed as a ratio of earned value (EV) to actual cost (AC) and is considered a critical EVM metric?

- A. Cost variance (CV)
- B. Cost performance index (CPI)
- C. Budget at completion (BAC)
- D. Variance at completion (VAC)

Answer: B

NEW QUESTION 303

- (Exam Topic 1)

The basis of identification for current or potential problems to support later claims or new procurements is provided by:

- A. A risk urgency assessment.
- B. The scope baseline.
- C. Work performance information.
- D. Procurement audits.

Answer: C

NEW QUESTION 306

- (Exam Topic 1)

Lessons learned are created and project resources are released in which Process Group?

- A. Planning
- B. Executing
- C. Closing
- D. Initiating

Answer: C

NEW QUESTION 311

- (Exam Topic 1)

Which process involves defining, preparing, and coordinating all subsidiary plans and integrating them into a comprehensive plan?

- A. Direct and Manage Project Work
- B. Develop Project Management Plan
- C. Plan Quality Management
- D. Monitor and Control Project Work

Answer: B

NEW QUESTION 313

- (Exam Topic 1)

A project manager is appointed full-time to a project and is given full-time administrative staff and full-time project team members. This situation describes which type of organizational structure?

- A. Projectized
- B. Weak matrix
- C. Functional
- D. Balanced matrix

Answer: A

NEW QUESTION 316

- (Exam Topic 1)

Which group is formally chartered and responsible for reviewing, evaluating, approving, delaying, or rejecting changes to the project and for recording and

communicating decisions?

- A. Project team
- B. Focus group
- C. Change control board
- D. Project stakeholders

Answer: C

NEW QUESTION 317

- (Exam Topic 1)

Stakeholder satisfaction should be managed as a key project:

- A. Benefit
- B. Initiative
- C. Objective
- D. Process

Answer: C

NEW QUESTION 318

- (Exam Topic 1)

The iterative process of increasing the level of detail in a project management plan as greater amounts of information become available is known as:

- A. Continuous improvement.
- B. Predictive planning.
- C. Progressive elaboration.
- D. Quality assurance.

Answer: C

NEW QUESTION 321

- (Exam Topic 1)

Which tool or technique is used in the Estimate Costs process?

- A. Acquisition
- B. Earned value management
- C. Vendor bid analysis
- D. Forecasting

Answer: C

NEW QUESTION 322

- (Exam Topic 1)

Change requests are processed for review and disposition according to which process?

- A. Control Quality
- B. Control Scope
- C. Monitor and Control Project Work
- D. Perform Integrated Change Control

Answer: D

NEW QUESTION 325

- (Exam Topic 1)

What are the Project Procurement Management processes?

- A. Conduct Procurements, Control Procurements, Integrate Procurements, and Close Procurements
- B. Estimate Procurements, Integrate Procurements, Control Procurements, and Validate Procurements
- C. Plan Procurement Management, Conduct Procurements, Control Procurements, and Close Procurements
- D. Plan Procurement Management, Perform Procurements, Control Procurements, and Validate Procurements

Answer: C

NEW QUESTION 328

- (Exam Topic 1)

Enterprise environmental factors are an input to which process?

- A. Control Scope
- B. Define Scope
- C. Plan Scope Management
- D. Collect Requirements

Answer: C

NEW QUESTION 331

- (Exam Topic 1)

Which input to the Plan Risk Management process provides information on high-level risks?

- A. Project charter
- B. Enterprise environmental factors
- C. Stakeholder register
- D. Organizational process assets

Answer: A

NEW QUESTION 335

- (Exam Topic 1)

Which input to Collect Requirements is used to identify stakeholders who can provide information on requirements?

- A. Stakeholder register
- B. Scope management plan
- C. Stakeholder management plan
- D. Project charter

Answer: A

NEW QUESTION 338

- (Exam Topic 1)

Typical outcomes of a project include:

- A. Products, services, and improvements.
- B. Products, programs, and services.
- C. Improvements, portfolios, and services.
- D. Improvements, processes, and products.

Answer: A

NEW QUESTION 343

- (Exam Topic 1)

The process of estimating the type and quantity of material, human resources, equipment, or supplies required to perform each activity is known as:

- A. Collect Requirements.
- B. Conduct Procurements.
- C. Estimate Activity Durations.
- D. Estimate Activity Resources.

Answer: D

NEW QUESTION 344

- (Exam Topic 1)

Which process involves subdividing project deliverables and project work into smaller, more manageable portions?

- A. Develop Schedule
- B. Create WBS
- C. Estimate Activity Resources
- D. Define Scope

Answer: B

NEW QUESTION 345

- (Exam Topic 1)

A method of obtaining early feedback on requirements by providing a working model of the expected product before actually building is known as:

- A. Benchmarking.
- B. Context diagrams.
- C. Brainstorming.
- D. Prototyping.

Answer: D

NEW QUESTION 348

- (Exam Topic 1)

Which tool or technique allows a large number of ideas to be classified into groups for review and analysis?

- A. Nominal group technique
- B. Idea/mind mapping
- C. Affinity diagram
- D. Brainstorming

Answer: C

NEW QUESTION 353

- (Exam Topic 1)

Which process numerically analyzes the effect of identified risks on overall project objectives?

- A. Plan Risk Management
- B. Plan Risk Responses
- C. Perform Quantitative Risk Analysis
- D. Perform Qualitative Risk Analysis

Answer: C

NEW QUESTION 355

- (Exam Topic 1)

A project manager providing information to the right audience, in the right format, at the right time is an example of which type of communication?

- A. Efficient
- B. Effective
- C. Push
- D. Pull

Answer: B

NEW QUESTION 357

- (Exam Topic 1)

Which tools or techniques are used in the Plan Schedule Management process?

- A. Benchmarking, expert judgment, and analytical techniques
- B. Statistical sampling, benchmarking, and meetings
- C. Negotiations, pre-assignment, and multi-criteria decision analysis
- D. Expert judgment, analytical techniques, and meetings

Answer: D

NEW QUESTION 359

- (Exam Topic 1)

The Perform Integrated Change Control process occurs in which Process Group?

- A. Initiating
- B. Executing
- C. Monitoring and Controlling
- D. Planning

Answer: C

NEW QUESTION 361

- (Exam Topic 1)

An output of the Direct and Manage Project Work process is:

- A. Deliverables.
- B. Activity lists.
- C. A work breakdown structure.
- D. A scope statement.

Answer: A

NEW QUESTION 364

- (Exam Topic 1)

Scope, schedule, and cost parameters are integrated in the:

- A. Performance measurement baseline.
- B. Analysis of project forecasts,
- C. Summary of changes approved in a period,
- D. Analysis of past performance.

Answer: A

NEW QUESTION 367

- (Exam Topic 1)

Which document defines how a project is executed, monitored and controlled, and closed?

- A. Strategic plan
- B. Project charter
- C. Project management plan
- D. Service level agreement

Answer: C

NEW QUESTION 372

- (Exam Topic 1)

An example of a group decision-making technique is:

- A. Nominal group technique.
- B. Majority.
- C. Affinity diagram.
- D. Multi-criteria decision analysis.

Answer: B

NEW QUESTION 376

- (Exam Topic 6)

What are the objectives of Initiation processes?

- A. Initiation processes are performed in order to develop the project charter and Identify stakeholders.
- B. Initiation processes are performed in order to obtain budget approval for a project or phase and approve scope with customers.
- C. Initiation processes are performed to identify business objectives for a project or phase and identify stakeholders' goals.
- D. Initiation processes are performed to map initial requirements for a project or phase and prioritize them with stakeholders.

Answer: D

NEW QUESTION 381

- (Exam Topic 6)

The features and functions that characterize a result, product, or service can refer to:

- A. project scope
- B. product scope
- C. service scope
- D. product breakdown structure

Answer: B

NEW QUESTION 382

- (Exam Topic 6)

Which group of inputs will a project manager use during the Monitor Stakeholder Engagement process?

- A. Project charter, business documents, and project management plan
- B. Agreements, scope baseline, and project management plan
- C. Project charter, business case, and project management plan
- D. Work performance data, enterprise environmental factors, and project management plan

Answer: D

NEW QUESTION 385

- (Exam Topic 6)

Which tasks should a project manager accomplish in order to manage project scope correctly?

- A. Define
- B. Validate, and Control Scope
- C. Control Schedule; Control Costs and Manage Stakeholder Engagement
- D. Collect Requirement
- E. Define Scope
- F. Create WBS
- G. Develop Schedule, and Manage Stakeholder Engagement
- H. Plan Scope Management; Collect Requirements; Define
- I. Validate, and Control Scope; and Create WBS
- J. Define
- K. Validate, and Control Scope
- L. Control Cost
- M. Manage Stakeholder Engagement, and keep budget under control

Answer: C

NEW QUESTION 387

- (Exam Topic 6)

What should a project manager use to determine how much money is needed to complete a project?

- A. Earned value management (EVM)
- B. Estimate at completion (EAC)
- C. Earned value analysis (EVA)
- D. Budget at completion (BAC)

Answer: B

NEW QUESTION 388

- (Exam Topic 6)

The project team is brainstorming on approaches to deliver the upcoming product launch for which the project has been chartered. The project manager is laying out hybrid, adaptive, iterative methods. What is the team trying to address?

- A. Co-location
- B. Life-cycle
- C. Diversity
- D. Management

Answer: D

NEW QUESTION 390

- (Exam Topic 6)

A project team is discussing an upcoming planned product launch of a highly visible technologically advanced artificial intelligence tool. The team is debating the aspect of iterative and hybrid approaches. Which aspect of tailoring would this best represent?

- A. Life cycle approaches
- B. Resource availability
- C. Project dimensions
- D. Technology support

Answer: D

NEW QUESTION 391

- (Exam Topic 6)

Which is the tool or technique that is used to obtain the list of activities from the work packages?

- A. Data analysis
- B. Leads and lags
- C. Precedence diagramming method
- D. Decomposition

Answer: D

NEW QUESTION 395

- (Exam Topic 6)

Which term refers to the work performed to deliver results with specified features and functions?

- A. Project scope
- B. Product scope
- C. Change request
- D. Acceptance criteria

Answer: A

NEW QUESTION 399

- (Exam Topic 6)

Which of the following documents are created as part of Project Integration Management?

- A. Project charter and project management plan
- B. Communications management plan and scope management plan
- C. Quality management plan and risk management plan
- D. Project scope statement and communications management plan

Answer: A

NEW QUESTION 401

- (Exam Topic 5)

Which risk response strategy is common for both positive and negative risks?

- A. Share
- B. Accept
- C. Mitigate
- D. Transfer

Answer: B

NEW QUESTION 405

- (Exam Topic 5)

Which tool or technique can a project manager use to select in advance a team member who will be crucial to the task?

- A. Acquisition
- B. Negotiation
- C. Virtual team
- D. Pre-assignment

Answer: D

NEW QUESTION 409

- (Exam Topic 5)

Which type of diagram includes groups of information and shows relationships between factors, causes, and objectives?

- A. Affinity
- B. Scatter
- C. Fishbone
- D. Matrix

Answer: D

NEW QUESTION 411

- (Exam Topic 5)

Which process requires implementation of approved changes?

- A. Direct and Manage Project Execution
- B. Monitor and Control Project Work
- C. Perform Integrated Change Control
- D. Close Project or Phase

Answer: A

NEW QUESTION 413

- (Exam Topic 5)

In Plan Risk Management, which of the management plans determines who will be available to share information on various risks and responses at different times and locations?

- A. Schedule
- B. Quality
- C. Communications
- D. Cost

Answer: C

NEW QUESTION 418

- (Exam Topic 5)

Exhibit A is an example of which of the following types of Sequence Activities?

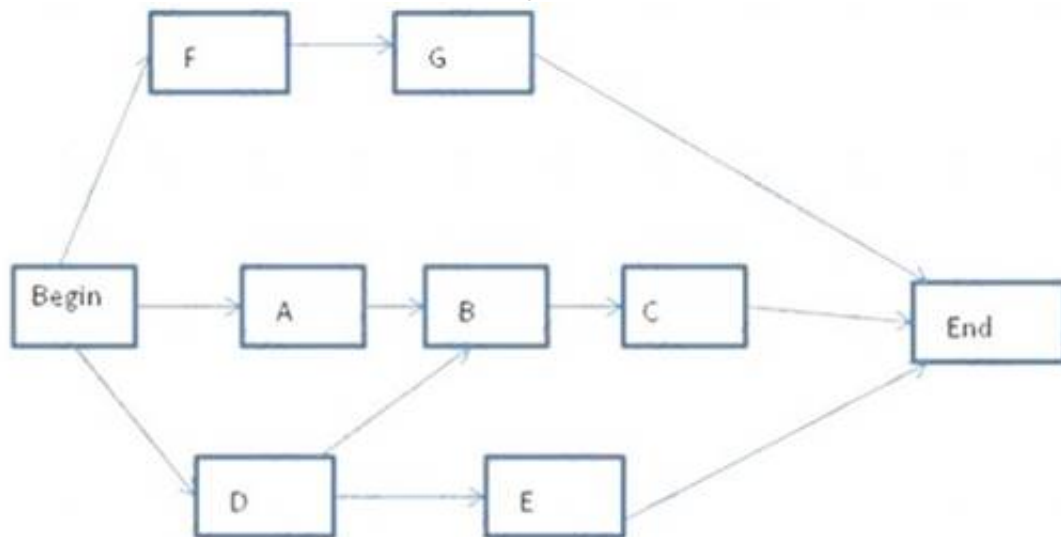


Exhibit A

- A. Activity-on-arrow diagramming
- B. Precedence diagramming
- C. Project schedule network diagramming
- D. Mathematical analysis diagramming

Answer: B

NEW QUESTION 422

- (Exam Topic 5)

Which of the following is an input to the Develop Project Charter process?

- A. Work performance information
- B. Project management plan
- C. Business case
- D. Change requests

Answer: C

NEW QUESTION 427

- (Exam Topic 5)

Which of the following is an output of the Conduct Procurements process?

- A. Project statement of work
- B. Selected sellers
- C. Risk register updates
- D. Teaming agreements

Answer: B

NEW QUESTION 432

- (Exam Topic 5)

The process to ensure that appropriate quality standards and operational definitions are used is:

- A. Plan Quality.
- B. Perform Quality Assurance.
- C. Perform Quality Control.
- D. Total Quality Management.

Answer: B

NEW QUESTION 436

- (Exam Topic 5)

Expected monetary value (EMV) is computed by which equation?

- A. Value of each possible outcome multiplied by probability of occurrence
- B. Value of each possible outcome multiplied by probability of non-occurrence
- C. Multiplying the value of each possible outcome by the probability of occurrence and adding the products together
- D. Multiplying the value of each possible outcome by the probability of non-occurrence and adding the products together

Answer: C

NEW QUESTION 438

- (Exam Topic 5)

Prototype development may be used as a tool for which of the following risk response strategies?

- A. Avoid
- B. Accept
- C. Mitigate
- D. Exploit

Answer: C

NEW QUESTION 442

- (Exam Topic 5)

Which of the following is a group decision-making technique?

- A. Brainstorming
- B. Focus groups
- C. Affinity diagram
- D. Plurality

Answer: D

NEW QUESTION 447

- (Exam Topic 5)

Which of the following is an output of Close Procurements?

- A. Accepted deliverables
- B. Organizational process assets updates
- C. Managing stakeholder expectations
- D. Performance reports

Answer: B

NEW QUESTION 448

- (Exam Topic 5)

During project selection, which factor is most important?

- A. Types of constraints
- B. Internal business needs
- C. Budget
- D. Schedule

Answer: B

NEW QUESTION 450

- (Exam Topic 5)

The staffing management plan is part of the:

- A. organizational process assets.
- B. resource calendar.
- C. human resource plan.
- D. Develop Project Team process.

Answer: C

NEW QUESTION 451

- (Exam Topic 5)

Which of the following is an estimating technique that uses the values of parameters from previous similar projects for estimating the same parameter or measure for a current project?

- A. Reserve analysis
- B. Three-point estimating
- C. Parametric estimating
- D. Analogous estimating

Answer: D

NEW QUESTION 453

- (Exam Topic 5)

Under which type of contract does the seller receive reimbursement for all allowable costs for performing contract work, as well as a fixed-fee payment calculated as a percentage of the initial estimated project costs?

- A. Cost Plus Fixed Fee Contract (CPFF)
- B. Cost Plus Incentive Fee Contract (CPIF)
- C. Firm Fixed Price Contract (FFP)
- D. Fixed Price with Economic Price Adjustment Contract (FP-EPA)

Answer: A

NEW QUESTION 455

- (Exam Topic 5)

Which of the following are three inputs to the risk register?

- A. Risk register updates, stakeholder register, and quality management plan
- B. Communication management plan, enterprise environmental factors, and activity duration estimates
- C. Risk management plan, activity cost estimates, and project documents
- D. Project scope statement, organizational process assets, and scope baseline

Answer: C

NEW QUESTION 457

- (Exam Topic 5)

Which type of dependency is contractually required or inherent in the nature of the work?

- A. External
- B. Lead
- C. Discretionary
- D. Mandatory

Answer: D

NEW QUESTION 458

- (Exam Topic 5)

The application of knowledge, skills, tools, and techniques to project activities to meet project requirements describes management of which of the following?

- A. Project
- B. Scope
- C. Contract
- D. Program

Answer: A

NEW QUESTION 463

- (Exam Topic 5)

The project has a current cost performance index of 0.80. Assuming this performance will continue, the new estimate at completion is \$1000. What was the original budget at completion for the project?

- A. \$800
- B. \$1000
- C. \$1250
- D. \$1800

Answer: A

NEW QUESTION 465

- (Exam Topic 5)

The technique of subdividing project deliverables into smaller, more manageable components until the work and deliverables are defined to the work package level is called:

- A. a control chart.
- B. baseline.
- C. Create WBS.
- D. decomposition.

Answer: D

NEW QUESTION 469

- (Exam Topic 5)

After Define Activities and Sequence Activities, the next process is:

- A. Estimate Activity Resources.
- B. Estimate Activity Durations,
- C. Develop Schedule.
- D. Control Schedule.

Answer: A

NEW QUESTION 471

- (Exam Topic 5)

Who is responsible for initiating a project?

- A. Project sponsor
- B. Project manager
- C. Program manager
- D. Project management office (PMO)

Answer: A

NEW QUESTION 472

- (Exam Topic 5)

Which is one of the determining factors used to calculate CPI?

- A. EV
- B. SPI
- C. PV
- D. ETC

Answer: A

NEW QUESTION 476

- (Exam Topic 5)

When cost variance is negative and schedule variance is positive, the project is:

- A. under budget and behind schedule.
- B. over budget and ahead of schedule.
- C. on schedule.
- D. complete; all planned values have been earned.

Answer: B

NEW QUESTION 480

- (Exam Topic 5)

The project budget is set at \$150,000. The project duration is planned to be one year. At the completion of Week 16 of the project, the following information is collected: Actual cost = \$50,000, Plan cost = \$45,000, Earned value = \$40,000. What is the cost performance index?

- A. 0.8
- B. 0.89
- C. 1.13
- D. 1.25

Answer: A

NEW QUESTION 484

- (Exam Topic 5)

Which quality control technique illustrates the 80/20 principle?

- A. Ishikawa diagram

- B. Control chart
- C. Run chart
- D. Pareto chart

Answer: D

NEW QUESTION 487

- (Exam Topic 5)

How should a stakeholder who is classified as high power and low interest be grouped in a power/interest grid during stakeholder analysis?

- A. Keep satisfied
- B. Keep informed
- C. Manage closely
- D. Monitor

Answer: A

NEW QUESTION 488

- (Exam Topic 4)

Which of the following correctly explains the term "progressive elaboration"?

- A. Changing project specifications continuously
- B. Elaborate tracking of the project progress
- C. Elaborate tracking of the project specifications with a change control system
- D. Project specifications becoming more explicit and detailed as the project progresses

Answer: D

NEW QUESTION 489

- (Exam Topic 4)

In a construction project schedule, what is the logical relationship between the delivery of the concrete materials and the pouring of concrete?

- A. Start-to-start (SS)
- B. Start-to-finish (SF)
- C. Finish-to-finish (FF)
- D. Finish-to-start (FS)

Answer: D

NEW QUESTION 491

- (Exam Topic 4)

What is the schedule performance index (SPI) using the following data? BAC = \$100,000 PV = \$50,000 AC = \$80,000 EV = \$40,000

- A. 1
- B. 0.4
- C. 0.5
- D. 0.8

Answer: D

NEW QUESTION 495

- (Exam Topic 4)

Which of the following is the primary output of the Identify Risks process?

- A. Risk management plan
- B. Risk register
- C. Change requests
- D. Risk response plan

Answer: B

NEW QUESTION 498

- (Exam Topic 4)

Which activity involves ensuring that the composition of a project's configuration items is correct?

- A. Configuration Identification
- B. Configuration Status Accounting
- C. Configuration Verification and Audit
- D. Configuration Quality Assurance

Answer: C

NEW QUESTION 502

- (Exam Topic 4)

Which of the following is a set of interrelated actions and activities performed to achieve a prespecified product, result, or service?

- A. Portfolio
- B. Process
- C. Project
- D. Program

Answer: B

NEW QUESTION 503

- (Exam Topic 4)

Which of the following is an input to the Perform Qualitative Risk Analysis process?

- A. Risk register
- B. Risk data quality assessment
- C. Risk categorization
- D. Risk urgency

Answer: A

NEW QUESTION 505

- (Exam Topic 4)

Which of the following processes audits the quality requirements and the results from quality control measures to ensure appropriate quality standards and operational definitions are used?

- A. Perform Quality Control
- B. Quality Metrics
- C. Perform Quality Assurance
- D. Plan Quality

Answer: C

NEW QUESTION 510

- (Exam Topic 4)

Which standard has interrelationships to other project management disciplines such as program management and portfolio management?

- A. Program Management Body of Knowledge Guide
- B. The Standard for Program Management
- C. Organizational Project Management Maturity Model (OPM3\$)
- D. Guide to the Project Management Body of Knowledge (PMBOK®)

Answer: D

NEW QUESTION 511

- (Exam Topic 4)

Documented identification of a flaw in a project component together with a recommendation is termed a:

- A. corrective action.
- B. preventive action.
- C. non-conformance report,
- D. defect repair.

Answer: D

NEW QUESTION 514

- (Exam Topic 4)

Which piece of information is part of the WBS Dictionary?

- A. Responsible organization
- B. Change requests
- C. Validated deliverables
- D. Organizational process assets

Answer: A

NEW QUESTION 519

- (Exam Topic 4)

Who provides the inputs for the original estimates of activity durations for tasks on the project plan?

- A. Project sponsor
- B. Project manager
- C. Person responsible for project scheduling
- D. Person who is most familiar with the task

Answer: D

NEW QUESTION 521

- (Exam Topic 4)

Which of the following project documents is an input to the Control Scope process?

- A. Vendor risk assessment diagram
- B. Risk register
- C. Requirements traceability matrix
- D. Area of responsibility summary

Answer: C

NEW QUESTION 523

- (Exam Topic 4)

The milestone list is an input to which process from the Planning Process Group?

- A. Define Activities
- B. Estimate Activity Durations
- C. Estimate Activity Resources
- D. Sequence Activities

Answer: D

NEW QUESTION 526

- (Exam Topic 4)

The project scope statement and resource calendars are inputs to which Project Time Management process?

- A. Sequence Activities
- B. Estimate Activity Resources
- C. Develop Schedule
- D. Control Schedule

Answer: C

NEW QUESTION 531

- (Exam Topic 4)

Project contracts generally fall into which of the following three broad categories?

- A. Fixed-price, cost reimbursable, time and materials
- B. Make-or-buy, margin analysis, fixed-price
- C. Time and materials, fixed-price, margin analysis
- D. Make-or-buy, lump-sum, cost-plus-incentive

Answer: A

NEW QUESTION 534

- (Exam Topic 4)

What provides information regarding the ways people, teams, and organizational units behave?

- A. Organizational chart
- B. Organizational theory
- C. Organizational structure
- D. Organizational behavior

Answer: B

NEW QUESTION 535

- (Exam Topic 4)

Which of the following documents allows the project manager to assess risks that may require near term action?

- A. Probability and impact matrix
- B. Contingency analysis report
- C. Risk urgency assessment
- D. Rolling wave plan

Answer: C

NEW QUESTION 539

- (Exam Topic 4)

Co-location is a tool and technique of:

- A. Develop Human Resource Plan.
- B. Manage Project Team.
- C. Develop Project Team.
- D. Acquire Project Team.

Answer: C

NEW QUESTION 540

- (Exam Topic 4)

Which degree of authority does a project manager have on a project in a strong matrix organizational structure?

- A. Limited
- B. Low to moderate
- C. Moderate to high
- D. High to almost total

Answer: C

NEW QUESTION 541

- (Exam Topic 4)

Which Perform Quality Control tool graphically represents how various elements of a system interrelate?

- A. Control chart
- B. Flowchart
- C. Run chart
- D. Pareto chart

Answer: B

NEW QUESTION 542

- (Exam Topic 4)

Which of the following tools and techniques is used in the Verify Scope process?

- A. Inspection
- B. Variance analysis
- C. Expert judgment
- D. Decomposition

Answer: A

NEW QUESTION 547

- (Exam Topic 4)

Which provides the basic framework for managing a project?

- A. Project life cycle
- B. Work breakdown structure (WBS)
- C. Enterprise environmental factors
- D. Project initiation

Answer: A

NEW QUESTION 552

- (Exam Topic 4)

The process of aggregating the estimated costs of individual activities or work packages to establish an authorized cost baseline is:

- A. Determine Budget.
- B. Baseline Budget.
- C. Control Costs.
- D. Estimate Costs.

Answer: A

NEW QUESTION 554

- (Exam Topic 4)

During which process would stakeholders provide formal acceptance of the completed project scope?

- A. Perform Quality Control
- B. Verify Scope
- C. Control Scope
- D. Develop Schedule

Answer: B

NEW QUESTION 557

- (Exam Topic 4)

A required input for Create WBS is a project:

- A. quality plan.
- B. schedule network.
- C. management document update.
- D. scope statement.

Answer:

D

NEW QUESTION 558

- (Exam Topic 4)

When addressing roles and responsibilities, which item ensures that the staff has the skills required to complete project activities?

- A. Authority
- B. Role
- C. Competency
- D. Responsibility

Answer: C

NEW QUESTION 562

- (Exam Topic 4)

Lessons learned documentation is gathered during which of the following Project Management Process Groups?

- A. Planning
- B. Executing
- C. Closing
- D. Initiating

Answer: C

NEW QUESTION 563

- (Exam Topic 4)

Which type of risk diagram is useful for showing time ordering of events?

- A. Ishikawa
- B. Milestone
- C. Influence
- D. Decision tree

Answer: C

NEW QUESTION 568

- (Exam Topic 4)

Changes to formally controlled documentation, plans, etc. to reflect modified or additional ideas or content are known as:

- A. updates.
- B. defect repairs.
- C. preventive actions.
- D. corrective actions.

Answer: A

NEW QUESTION 572

- (Exam Topic 4)

The definition of operations is a/an:

- A. organizational function performing the temporary execution of activities that produce the same product or provide repetitive service.
- B. temporary endeavor undertaken to create a unique product, service, or result.
- C. organization that provides oversight for an administrative area.
- D. organizational function performing the ongoing execution of activities that produce the same product or provide repetitive service.

Answer: D

NEW QUESTION 577

- (Exam Topic 4)

Which of the following outputs from the Control Schedule process aids in the communication of schedule variance (SV), schedule performance index (SPI), or any performance status to stakeholders?

- A. Performance organizations
- B. Schedule baselines
- C. Work performance measurements
- D. Change requests

Answer: C

NEW QUESTION 580

- (Exam Topic 4)

Which process occurs within the Monitoring and Controlling Process Group?

- A. Control Costs
- B. Plan Quality
- C. Perform Quantitative Risk Analysis

D. Determine Budget

Answer: A

NEW QUESTION 581

- (Exam Topic 4)

One of the tools and techniques of the Manage Project Team process is:

- A. organization charts.
- B. ground rules.
- C. organizational theory,
- D. conflict management.

Answer: D

NEW QUESTION 586

- (Exam Topic 4)

Prioritizing risks for further analysis or action by assessing and combining their probability of occurrence and impact takes place in which process?

- A. Monitor and Control Risks
- B. Plan Risk Management
- C. Perform Qualitative Risk Analysis
- D. Perform Quantitative Risk Analysis

Answer: C

NEW QUESTION 587

- (Exam Topic 4)

Which of the following is an output of the Perform Integrated Change Control process?

- A. Project document updates
- B. Organizational process assets updates
- C. Change requests
- D. Deliverables

Answer: A

NEW QUESTION 590

- (Exam Topic 4)

As the project progresses, which of the following is routinely collected from the project activities?

- A. Communication management activities
- B. Change requests
- C. Configuration verification and audit
- D. Work performance information

Answer: D

NEW QUESTION 593

- (Exam Topic 4)

The progressive detailing of the project management plan is called:

- A. expert judgment.
- B. rolling wave planning.
- C. work performance information.
- D. specification.

Answer: B

NEW QUESTION 596

- (Exam Topic 4)

Ensuring that both parties meet contractual obligations and that their own legal rights are protected is a function of:

- A. Conduct Procurements.
- B. Close Procurements.
- C. Administer Procurements,
- D. Plan Procurements.

Answer: C

NEW QUESTION 598

- (Exam Topic 4)

Which process should be conducted from the project inception through completion?

- A. Monitor and Control Project Work

- B. Perform Quality Control
- C. Perform Integrated Change Control
- D. Monitor and Control Risks

Answer: C

NEW QUESTION 601

- (Exam Topic 4)

The project manager at an organization has just realized that some of the engineering staff has been allocated to project Y and will not be available to finish task X. The project manager has also discovered that at the current pace, it will not be possible to complete the project on time. Due to cost constraints, hiring more work force is not a viable option. Which tools are at the manager's disposal?

- A. Resource leveling and fast tracking
- B. Fast tracking and crashing
- C. Crashing and applying leads and lags
- D. Scheduling tools and applying leads and lags

Answer: A

NEW QUESTION 602

- (Exam Topic 4)

Which type of estimating is used to improve the accuracy of an activity's duration?

- A. Analogous
- B. Parametric
- C. Three-point
- D. What-if scenario analysis

Answer: C

NEW QUESTION 605

- (Exam Topic 4)

Which cost estimate technique includes contingencies to account for cost uncertainty?

- A. Vendor bid analysis
- B. Three-point estimates
- C. Parametric estimating
- D. Reserve analysis

Answer: D

NEW QUESTION 609

- (Exam Topic 4)

Which of the following is developed from the project scope baseline and defines only that portion of the project scope that is to be included within a related contract?

- A. Product scope description
- B. Procurement statement of work
- C. Project schedule
- D. Work breakdown structure (WBS)

Answer: B

NEW QUESTION 612

- (Exam Topic 4)

A project has a current cost performance index (CPI) of 1.25. To date, US\$10,000 have been spent on performing the project work. What is the earned value of the work completed to date?

- A. US\$S000
- B. US\$9500
- C. US\$10,000
- D. US\$12,500

Answer: D

NEW QUESTION 613

- (Exam Topic 4)

What is the responsibility of the project manager and the functional manager respectively?

- A. Oversight for an administrative area; a facet of the core business
- B. Achieving the project objectives; providing management oversight for an administrative area
- C. A facet of the core business; achieving the project objectives
- D. Both are responsible for achieving the project objectives.

Answer: B

NEW QUESTION 615

- (Exam Topic 4)

Tools and techniques used for Plan Communications include the communication:

- A. requirements analysis, communication technology, communication models, and communication methods.
- B. methods, stakeholder register, communication technology, and communication models.
- C. requirements, communication technology, communication requirements analysis, and communication methods.
- D. management plan, communication technology, communication models, and communication requirements analysis.

Answer: A

NEW QUESTION 618

- (Exam Topic 4)

Which of the following is a tool or technique of the Define Activities process?

- A. Rolling wave planning
- B. Precedence diagramming method (PDM)
- C. Alternatives analysis
- D. Parametric estimating

Answer: A

NEW QUESTION 622

- (Exam Topic 4)

Monte Carlo is which type of risk analysis technique?

- A. Probability
- B. Quantitative
- C. Qualitative
- D. Sensitivity

Answer: B

NEW QUESTION 623

- (Exam Topic 4)

Which is used to solicit proposals from prospective sellers?

- A. Procurement statement of work
- B. Resource calendars
- C. Procurement document
- D. Independent estimates

Answer: C

NEW QUESTION 627

- (Exam Topic 4)

The PV is \$1000, EV is \$2000, and AC is \$1500. What is CPI?

- A. 1.33
- B. 2
- C. 0.75
- D. 0.5

Answer: A

NEW QUESTION 630

- (Exam Topic 4)

Which technique helps to determine the risks that have the most potential impact on a project?

- A. Cost risk simulation analysis
- B. Expected monetary value analysis
- C. Modeling and simulation
- D. Sensitivity analysis

Answer: D

NEW QUESTION 631

- (Exam Topic 4)

Testing falls into which of the following categories of cost of quality?

- A. Internal failure costs
- B. Prevention costs
- C. Appraisal costs
- D. External failure costs

Answer: C

NEW QUESTION 634

- (Exam Topic 4)

What is a deliverable-oriented, hierarchical decomposition of the work to be executed to accomplish the project objectives and create the required deliverables?

- A. Organizational breakdown structure (OBS)
- B. Work performance information
- C. Work package
- D. Work breakdown structure (WBS)

Answer: D

NEW QUESTION 636

- (Exam Topic 4)

In which type of organizational structure are staff members grouped by specialty?

- A. Functional
- B. Projectized
- C. Matrix
- D. Balanced

Answer: A

NEW QUESTION 637

- (Exam Topic 4)

Which can be used to determine whether a process is stable or has predictable performance?

- A. Matrix diagram
- B. Histogram
- C. Control chart
- D. Flowchart

Answer: C

NEW QUESTION 640

- (Exam Topic 4)

How many Project Management Process Groups are there?

- A. 3
- B. 4
- C. 5
- D. 6

Answer: C

NEW QUESTION 644

- (Exam Topic 6)

A project manager is searching for solutions that bring some degree of satisfaction to all parties in order to temporarily resolve a conflict. What conflict management technique is described in this situation?

- A. Withdraw/avoid
- B. Smooth /accommodate
- C. Collaborate/problem solve
- D. Compromise/ reconcile

Answer: D

NEW QUESTION 649

- (Exam Topic 6)

Match the project manager's sphere of influence with the associated primary role.

Project Manager's Sphere of Influence		Project Manager's Primary Role
Professional discipline		Use informal and formal networks for communication among the sponsor, team, and stakeholders.
The industry		Advocate the project's value in interactions with other project managers to effectively gain the required resources and funding.
The project		Apply and transfer knowledge continuously to related professions.
The organization		Keep abreast of emerging technology developments and the changing market.

- A. Mastered
- B. Not Mastered

Answer: A

Explanation:

Project Manager's Sphere of Influence		Project Manager's Primary Role
Professional discipline	The project	Use informal and formal networks for communication among the sponsor, team, and stakeholders.
The industry	Professional discipline	Advocate the project's value in interactions with other project managers to effectively gain the required resources and funding.
The project	The industry	Apply and transfer knowledge continuously to related professions.
The organization	The organization	Keep abreast of emerging technology developments and the changing market.

NEW QUESTION 652

- (Exam Topic 6)
To which knowledge area does the Collect Requirements process belong?

- A. Quality Management
- B. Scope Management
- C. Cost Management
- D. Integration Management

Answer: B

NEW QUESTION 654

- (Exam Topic 6)
In an agile or adaptive environment, when should risk be monitored and prioritized?

- A. Only during the initiation and Closing phases
- B. During the initiation and Planning phases
- C. During each iteration as the project progresses
- D. Throughout the Planning process group and retrospective meeting

Answer: C

NEW QUESTION 658

- (Exam Topic 6)

Which of the following is used as an input to prepare a cost management plan?

- A. Expert judgment
- B. Lessons learned
- C. Cost estimates
- D. Project management plan

Answer: D

NEW QUESTION 659

- (Exam Topic 6)

A project manager is preparing to meet with three crucial project stakeholders on a new project. Which tools and techniques can the project manager use to capture stakeholder interest?

- A. Review stakeholder register and meeting
- B. Data analysis and communication skills
- C. Data gathering and data analysis
- D. Communication skills and cultural awareness

Answer: D

NEW QUESTION 662

- (Exam Topic 6)

The Agile principle "welcome changing requirements, even late in development" relates to which agile manifesto?

- A. Working software over comprehensive documentation
- B. Individuals and interactions over processes and tools
- C. Customer collaboration over contract negotiation
- D. Responding to change over following a plan

Answer: D

NEW QUESTION 666

- (Exam Topic 6)

Which of the following describes the similarities of the process groups and project life cycle?

- A. The life cycle involves three project management process groups.
- B. Both provide a basic framework to manage the project.
- C. Each project must have a life cycle and all processes in the five process groups.
- D. The project life cycle is managed by executing the processes within the five process groups.

Answer: C

NEW QUESTION 668

- (Exam Topic 6)

Which project manager competency is displayed through the knowledge, skills, and behaviors related to specific domains of project, program, and portfolio management?

- A. Leadership management
- B. Technical project management
- C. Strategic management
- D. Business management

Answer: B

NEW QUESTION 669

- (Exam Topic 6)

Company A has just been notified about a new legal requirement for its business operations. What is the classification of this item?

- A. Internal enterprise environmental factor
- B. Risk register database
- C. External enterprise environmental factor
- D. Organizational process asset

Answer: C

NEW QUESTION 672

- (Exam Topic 6)

A project manager is launching an information system to provide a lessons learned database. This action is necessary for recipients to access content at their own discretion. Which communication method is described?

- A. Push communication
- B. Pull communication
- C. Interactive communication
- D. Stakeholder communication

Answer: B

NEW QUESTION 676

- (Exam Topic 6)

Match the project life cycle type with its corresponding definition.

Project Life Cycle Type		Definition
Adaptive		The detailed scope is defined and approved before the start of an iteration.
Incremental		The project scope is determined early in the project life cycle, but time and cost estimates are modified as an understanding of the product increases.
Predictive		The project's scope, time, and cost are determined in the early phases of the life cycle.
Iterative		The deliverable is produced through a series of iterations that successively add functionality within a predetermined timeframe.

- A. Mastered
- B. Not Mastered

Answer: A

Explanation:

ADAPTATIVE ITERATIVE PREDICTIVE
INCREMENTAL

NEW QUESTION 677

- (Exam Topic 6)

In which Project Cost Management process is work performance data included?

- A. Plan Cost Management
- B. Estimate Costs
- C. Determine Budget
- D. Control Costs

Answer: D

NEW QUESTION 682

- (Exam Topic 6)

A project manager Is in the process of working with stakeholders to meet their needs and expectations, and identifying and fostering communication and involvement. Which process does this typically represent?

- A. Monitor Stakeholder Engagement
- B. Monitor Communications
- C. Manage Communications
- D. Manage Stakeholder Engagement

Answer: D

NEW QUESTION 683

- (Exam Topic 6)

The project manager is working in the processes of Project Resource Management. Which process is the project manager developing if they are using parametric estimation?

- A. Plan Resource Management
- B. Estimate Activity Resources
- C. Estimate Costs
- D. Acquire Resources

Answer: B

NEW QUESTION 686

- (Exam Topic 6)

A firm contracted an event management company to conduct the annual sales day event. The agreement states that the event management company will charge the firm for the actuals and receive 8% of the total cost. What type of contract is this?

- A. Time and material (T&M)
- B. Fixed price incentive fee (FPIF)
- C. Cost plus fixed fee (CPFF)
- D. Cost plus award fee (CPAF)

Answer: C

NEW QUESTION 690

- (Exam Topic 6)

Deciding the phases of a project life cycle would be considered a part of which of these knowledge areas?

- A. Project Schedule Management
- B. Project Scope Management
- C. Project Resource Management
- D. Project Integration Management

Answer: D

NEW QUESTION 693

- (Exam Topic 6)

Which of these is true of project integration management?

- A. Project Integration Management is mandatory and more effective in larger projects.
- B. Project Integration Management and expert judgment are mutually exclusive.
- C. Project Integration Management is the responsibility of the project manager
- D. Project Integration Management excludes the triple constraints if cost performance index (CPI) equals zero.

Answer: D

NEW QUESTION 698

- (Exam Topic 6)

A project manager is experiencing a project with a high degree of change. Which type of stakeholder engagement does this project require?

- A. Discussing with management
- B. Escalating to the sponsors
- C. Engaging regularly with stakeholders
- D. Engaging only with decision makers

Answer: C

NEW QUESTION 702

- (Exam Topic 6)

A sponsor asks a project manager to provide a project's expected total costs based on its progress. What formula should the project manager use to determine this?

- A. Earned value (EV) / actual cost (AC)
- B. Estimate at completion (EAC) - AC
- C. Budget at completion (BAC) / cost performance index (CPI)
- D. EV - planned value (PV)

Answer: B

NEW QUESTION 707

- (Exam Topic 6)

What charts and figures should project managers use during the Perform Quantitative Risk Analysis process?

- A. Tornado diagrams and influence diagrams
- B. Detectability bubble charts and probability and impact matrix
- C. Hierarchical charts and burndown charts
- D. Flow charts and responsible, accountable, consult, and inform (RACI) charts

Answer: A

NEW QUESTION 712

- (Exam Topic 6)

Which of the following lists represents the outputs of the Monitor Communications process?

- A. Project communications, project management plan updates, project documents updates, and organizational process assets updates
- B. Work performance information, change requests, project management plan updates, and project documents updates
- C. Communications management plan, project management plan updates, work performance report, and project documents update
- D. Stakeholder engagement plan, change requests, project management plan updates, and project documents updates

Answer: B

NEW QUESTION 713

- (Exam Topic 6)

What is one of the main purposes of the project charter?

- A. Formal authorization of the existence of the project
- B. Formal acceptance of the project management plan
- C. Formal approval of the detailed project budget
- D. Formal definition of stakeholder roles and responsibilities

Answer: A

NEW QUESTION 715

- (Exam Topic 6)

A project manager needs to demonstrate that the project meets quality standards and success criteria. For that reason, the project manager is defining the quality objectives of the project, the quality tools that will be used, and quality metrics for the project deliverables.

Which process is the project manager executing?

- A. Manage Quality
- B. Plan Quality Management
- C. Control Quality
- D. Plan Scope Management

Answer: B

NEW QUESTION 717

- (Exam Topic 6)

A project is in progress and about to move to a different phase, according to the plan. This will be a good opportunity for the project manager to:

- A. create the project management plan.
- B. identify the project objectives.
- C. review and update stakeholder engagement.
- D. create the schedule baseline.

Answer: C

NEW QUESTION 721

- (Exam Topic 6)

What is the difference between quality metrics and quality measurements?

- A. Quality metrics are product attributes and the measurement is the result of the Monitor and Control Project process
- B. Quality metrics are the result of the Monitor and Control Project process and the measurements are product attributes
- C. Quality metrics and measurements are the same concept
- D. Quality metrics is the general objective and the measurements are the specific objectives

Answer: A

NEW QUESTION 723

- (Exam Topic 6)

Which is the order of steps in the Procurement Management process?

- A. Identifying and planning procurement requirements, obtaining quotes or proposals, negotiating with vendors, contracting with selected vendors, and controlling procurements
- B. Identifying and planning procurement requirements, negotiating with vendors, contracting with selected vendors, obtaining quotes or proposals, and controlling procurements
- C. Controlling procurements, identifying and planning procurement requirements, obtaining quotes or proposals, negotiating with vendors, and contracting with selected vendors
- D. Obtaining quotes or proposals, identifying and planning procurement requirements, negotiating with vendors, contracting with selected vendors, and controlling procurements

Answer: A

NEW QUESTION 727

- (Exam Topic 6)

A project manager is identifying the risks of a project. Which technique should the project manager use?

- A. Representations of uncertainty
- B. Prompt lists
- C. Audits
- D. Risk categorization

Answer: B

NEW QUESTION 732

- (Exam Topic 6)

Which components of the project management plan are inputs used when creating the stakeholder engagement plan?

- A. Risk, resource, and communications management plans
- B. Scope, quality, and resource management plans
- C. Procurement, integration, and risk management plans
- D. Communications, schedule, and cost management plans

Answer: A

NEW QUESTION 736

- (Exam Topic 6)

Under which circumstances should multiple projects be grouped in a program?

- A. When they are needed to accomplish a set of goals and objectives for an organization
- B. When they have the same project manager and the same organizational unit
- C. When they have the same scope, budget, and schedule
- D. When they are from the same unit of the organization

Answer: A

NEW QUESTION 740

- (Exam Topic 6)

In a functional organization, the director of an important stakeholder business group expressed concern to a line manager about the progress of the project. What should the line manager do next?

- A. Hold a face-to-face meeting with the project manager and warn them.
- B. Point the director to a link where they can take a look at the reports.
- C. Invite stakeholders to attend monthly progress review meetings.
- D. Ask the project manager to update the monthly status report distribution list.

Answer: C

NEW QUESTION 744

- (Exam Topic 6)

The project manager is dividing the project scope into smaller pieces, and repeating this process until no more subdivisions are required. At this point the project manager is able to estimate costs and activities for each element. What are these elements called?

- A. Project activities
- B. Work packages
- C. Planning packages
- D. Project deliverables

Answer: B

NEW QUESTION 745

- (Exam Topic 6)

An important project stakeholder has low risk tolerance. Which type of communication should a project manager use to provide this stakeholder with a difficult update?

- A. Informal conversation
- B. Face-to-face meeting
- C. Short email update
- D. Written report

Answer: A

NEW QUESTION 750

- (Exam Topic 6)

What purpose does the hierarchical locus of stakeholder communications serve?

- A. Maintains the focus on project and organizational stakeholders
- B. Preserves the focus on external stakeholders—such as customers and vendors—as well as on other projects
- C. Sustains the focus on general communication activities using email, social media, and websites
- D. Keeps the focus on the position of the stakeholder or group with respect to the project team

Answer: C

NEW QUESTION 751

- (Exam Topic 6)

In which of the Risk Management processes is the project charter used as an input?

- A. Plan Risk Responses
- B. Implement Risk Responses
- C. Plan Risk Management
- D. Perform Quantitative Risk Responses

Answer: C

NEW QUESTION 752

- (Exam Topic 6)

Why is tailoring required in a project?

- A. Because a one-size-fits-all approach avoids complications and saves time.
- B. Because every project is unique and not every tool, technique, input, or output identified in the PMBOK Guide is required.
- C. Because tailoring allows us to identify the techniques, procedures, and system practices used by those in the project.
- D. Project managers should apply every process in the PMBOK Guide to the project, so tailoring is not required.

Answer: C

NEW QUESTION 757

- (Exam Topic 6)

In which sphere of influence is the project manager demonstrating the value of project management and advancing the efficacy of the project management office (PMO)?

- A. The organization
- B. The project
- C. The industry
- D. The product

Answer: B

NEW QUESTION 761

- (Exam Topic 6)

The project manager is working in an agile/adaptive environment. The project manager is considering different approaches for applying Project Integration Management in this environment. How can the project manager ensure that this will work for the project?

- A. Take control of all decisions and product planning.
- B. Build a team that can respond to changes within a collaborative, decision-making environment.
- C. Promote a team with a narrow specialization within a hierarchical environment.
- D. Delegate project decisions to the product owner and sponsor.

Answer: D

NEW QUESTION 763

- (Exam Topic 6)

Due to today's competitive global market, organizations require more than technical project management skills. Which of the following skills can support long-range strategic objectives that contribute to the bottom line?

- A. Planning and risk management skills
- B. Communication and time management skills
- C. Business intelligence and leadership skills
- D. Strategic and business management skills

Answer: C

NEW QUESTION 766

- (Exam Topic 6)

The project manager is working with some functional managers and stakeholders on the resource management plan Which elements may be included in this plan?

- A. Team values, team agreements, and conflict resolution process
- B. Conflict resolution process, communication guidelines, and meeting schedules
- C. Team roles and responsibilities, team management, and training plan
- D. Resource requirements, resource assignments, and team performance assessments

Answer: D

NEW QUESTION 768

- (Exam Topic 6)

Analyzing activity sequences, durations, resource requirements, and schedule constraints for project execution and monitoring and controlling relates to which process?

- A. Develop Schedule
- B. Control Schedule
- C. Estimate Activity Durations
- D. Define Activities

Answer: A

NEW QUESTION 771

- (Exam Topic 6)

Which two processes should be used to influence costs in the early stages of a project?

- A. Estimate Costs and Determine Budget
- B. Plan Cost Management and Estimate Activity Durations
- C. Control Quality and Control Costs

D. Plan Stakeholder Engagement and Plan Communications Management

Answer: A

NEW QUESTION 775

- (Exam Topic 6)

What is a tool or technique used in the Control Quality process?

- A. Attribute sampling
- B. Parametric estimating
- C. Statistical sampling
- D. Expert judgment

Answer: A

NEW QUESTION 777

- (Exam Topic 6)

When developing the project schedule, a project manager uses decomposition and rolling wave planning techniques in this process.

- A. Develop Schedule
- B. Define Activities
- C. Define Scope
- D. Collect Requirements

Answer: B

NEW QUESTION 781

- (Exam Topic 6)

Which action should the project manager take after the team finishes executing the scope?

- A. Verify the deliverables to ensure that they are correct and meet the customer's satisfaction.
- B. Accept all the deliverables and deliver them to the customer for final acceptance.
- C. Conduct a joint session with the customer, change the deliverables, and then request approval.
- D. Check that all change requests were implemented and release deliverables to the customer.

Answer: A

NEW QUESTION 785

- (Exam Topic 6)

A project manager uses their networking skills to build agreement with a difficult stakeholder. What level of influence did the project manager apply?

- A. Project level
- B. Organizational level
- C. Industry level
- D. Influential level

Answer: D

Explanation:

Relationship skills involving the development of extensive networks of people throughout the project manager's spheres of influence. These networks include formal networks such as organizational reporting structures. However, the informal networks that project managers develop, maintain, and nurture are more important. Informal networks include the use of established relationships with individuals such as subject matter experts and influential leaders. Use of these formal and informal networks allows the project manager to engage multiple people in solving problems and navigating the bureaucracies encountered in a project

NEW QUESTION 786

.....

Thank You for Trying Our Product

We offer two products:

1st - We have Practice Tests Software with Actual Exam Questions

2nd - Questions and Answers in PDF Format

CAPM Practice Exam Features:

- * CAPM Questions and Answers Updated Frequently
- * CAPM Practice Questions Verified by Expert Senior Certified Staff
- * CAPM Most Realistic Questions that Guarantee you a Pass on Your First Try
- * CAPM Practice Test Questions in Multiple Choice Formats and Updates for 1 Year

100% Actual & Verified — Instant Download, Please Click
[Order The CAPM Practice Test Here](#)