

300-420 Dumps

Designing Cisco Enterprise Networks (ENSLD)

<https://www.certleader.com/300-420-dumps.html>



NEW QUESTION 1

A company is running BGP on a single router, which has two connections to the same ISP. Which BGP feature ensures traffic is load balanced across the two links to the ISP?

- A. Multihop
- B. Multipath Load Sharing
- C. Next-Hop Address Tracking
- D. AS-Path Prepending

Answer: B

NEW QUESTION 2

When vEdge router redundancy is designed, which FHRP is supported?

- A. HSRP
- B. OMP
- C. GLBP
- D. VRRP

Answer: D

NEW QUESTION 3

What are two valid scaling techniques when an EIGRP network is designed that consists of more than 1000 routers? (Choose two.)

- A. Use structured hierarchical topology with route summarization
- B. Used sub-second timers
- C. Use the distribute-list command to filter routes
- D. Modify delay parameters on the links
- E. Implement multiple EIGRP autonomous systems

Answer: AE

NEW QUESTION 4

What is a benefit of using VRRPv3 as compared to VRRPv2?

- A. VRRPv3 supports IPv4 and IPv6
- B. VRRPv3 supports authentication
- C. VRRPv3 supports preemption
- D. VRRPv3 supports stateful switchover

Answer: A

NEW QUESTION 5

An enterprise customer has these requirements:

- end-to-end QoS for the business-critical applications and VoIP services based on CoS marking.
- flexibility to offer services such as IPv6 and multicast without any reliance on the service provider.
- support for full-mesh connectivity at Layer 2.

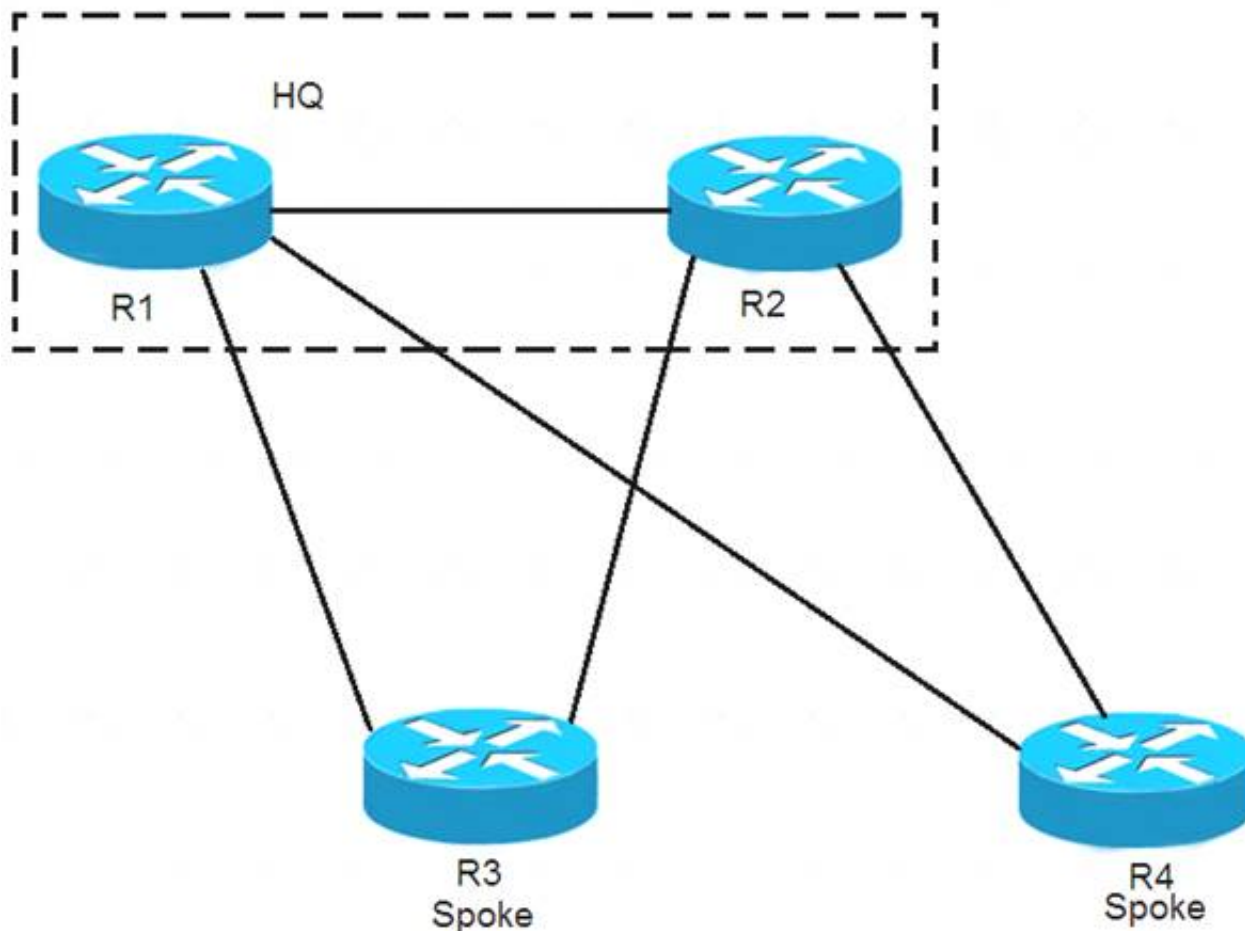
Which WAN connectivity option meets these requirements?

- A. VPWS
- B. MPLS VPN
- C. DMVPN
- D. VPLS

Answer: D

NEW QUESTION 6

Refer to the exhibit.



EIGRP has been configured on all links. The spoke nodes have been configured as EIGRP stubs, and the WAN links to R3 have higher bandwidth and lower delay than the links to R4. When a link failure occurs at the R1-R2 link, what happens to traffic on R1 that is destined for a subnet attached to R2?

- A. R1 has no route to R2 and drops the traffic
- B. R1 load-balances across the paths through R3 and R4 to reach R2
- C. R1 forwards the traffic to R3, but R3 drops the traffic
- D. R1 forwards the traffic to R3 in order to reach R2

Answer: D

NEW QUESTION 7

Which QoS feature responds to network congestion by dropping lower priority packets?

- A. CBWFQ
- B. tail drop
- C. WRED
- D. strict priority

Answer: C

NEW QUESTION 8

An engineer must design a multicast network for a financial application. Most of the multicast sources also receive multicast traffic (many-to-many deployment model). To better scale routing tables, the design must not use source trees. Which multicast protocol satisfies these requirements?

- A. PIM-SSM
- B. PIM-SM
- C. MSDP
- D. BIDIR-PIM

Answer: B

NEW QUESTION 9

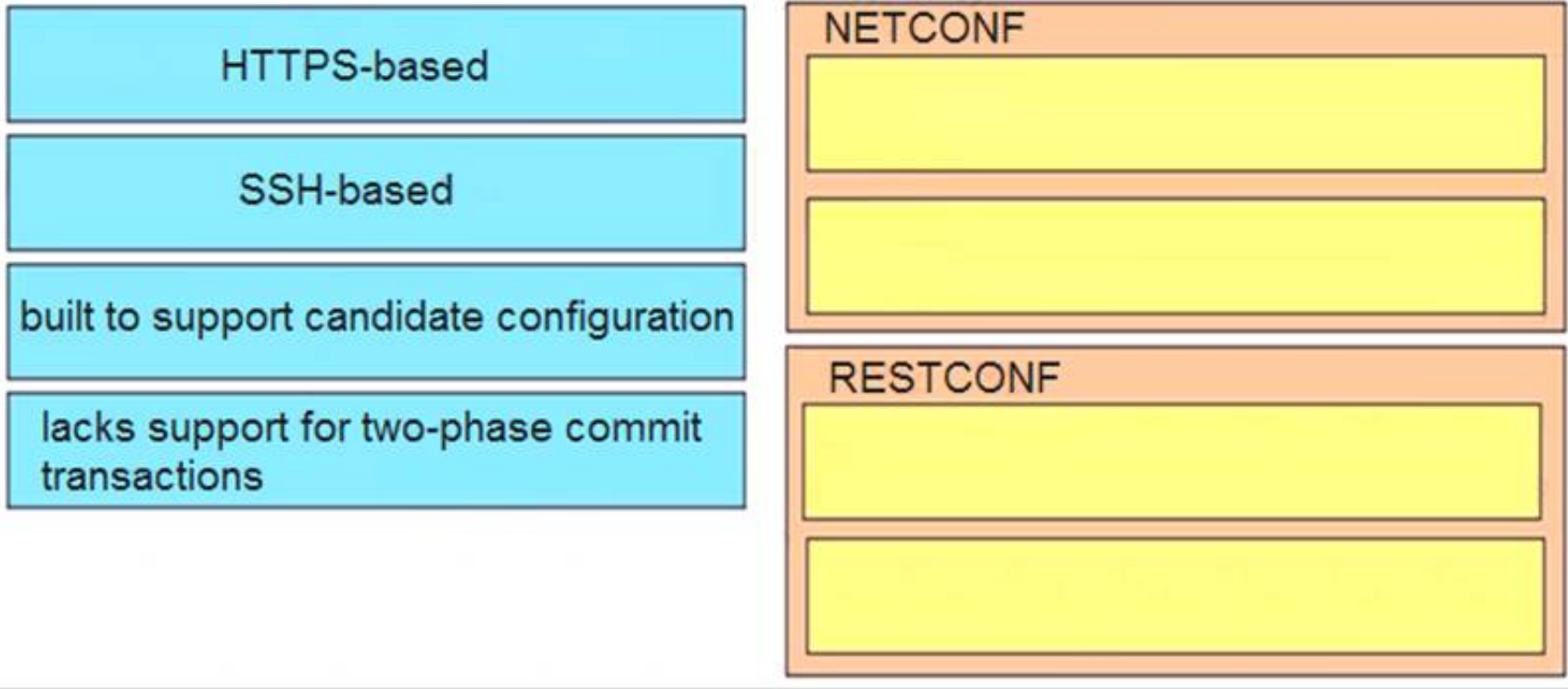
A branch office has a primary L3VPN MPLS connection back to the main office and an IPSEC VPN tunnel that serves as backup. Which design ensures that data is sent over the backup connection only if the primary MPLS circuit is down?

- A. Use EIGRP to establish a neighbor relationship with the main office via L3VPN MPLS and the IPSECVPN tunnel.
- B. Use BGP with the multipath feature enabled to force traffic via the primary path when available.
- C. Use static routes tied to an IP SLA to prefer the primary path while a floating static route points to the backup connection.
- D. Use OSPF with a passive-interface command on the backup connection.

Answer: C

NEW QUESTION 10

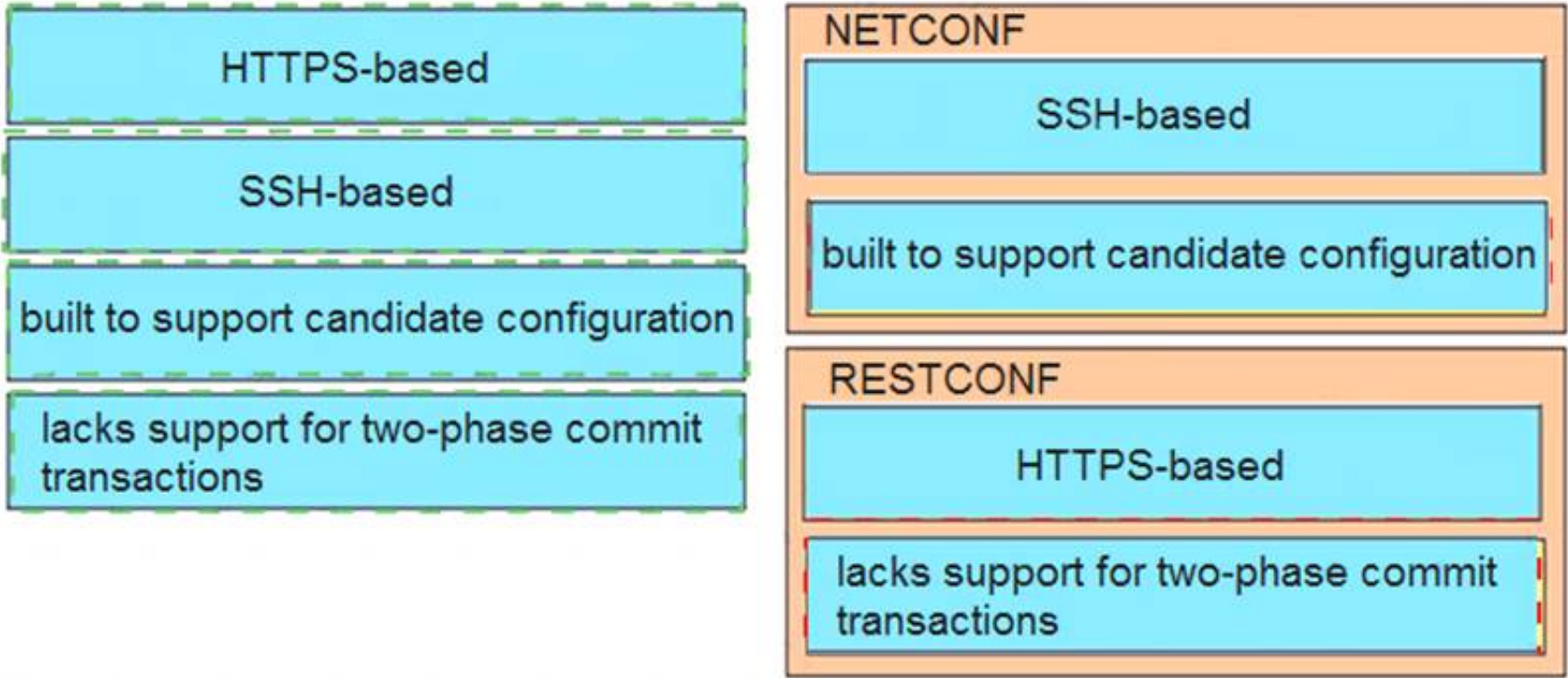
Drag and drop the properties from the left onto the protocols they describe on the right.



- A. Mastered
B. Not Mastered

Answer: A

Explanation:



NEW QUESTION 10

Which nonproprietary mechanism can be used to automate rendezvous point distribution in a large PIM domain?

- A. Embedded RP
B. BSR
C. Auto-RP
D. Static RP

Answer: B

NEW QUESTION 15

When designing interdomain multicast, which two protocols are deployed to achieve communication between multicast sources and receivers? (Choose two.)

- A. IGMPv2
B. BIDIR-PIM
C. MP-BGP
D. MSDP
E. MLD

Answer: CD

NEW QUESTION 17

Which feature must be incorporated into the campus LAN design to enable Wake on LAN?

- A. dynamic ARP Inspection Snooping on layer 2 devices
B. directed broadcasts on layer 3 devices

- C. proxy ARP on layer 3 devices
- D. DHCP Snooping on layer 2 devices

Answer: B

NEW QUESTION 18

In an SD-WAN architecture, which methods are used to bootstrap a vEdge router?

- A. DHCP options or manual configuration
- B. vManage or DNS records
- C. ZTP or manual configuration
- D. DNS records or DHCP options

Answer: C

NEW QUESTION 19

An engineer must design a VPN solution for a company that has multiple branches connecting to a main office. What are two advantages of using DMVPN instead of IPsec tunnels to accomplish this task? (Choose two.)

- A. support for AES 256-bit encryption
- B. greater scalability
- C. support for anycast gateway
- D. lower traffic overhead
- E. dynamic spoke-to-spoke tunnels

Answer: BE

NEW QUESTION 24

Which function are fabric intermediate nodes responsible for in an SD-Access Architecture?

- A. mapping EIDs to RLOCs
- B. encapsulating user traffic in a VXLAN header including the SGT
- C. registering new endpoints in the HTDB
- D. transporting IP packets between edge nodes and border nodes

Answer: D

NEW QUESTION 26

When IPsec VPNs are designed, what is a unique requirement if support for IP Multicast is required?

- A. encapsulation of traffic with GRE or VTI
- B. IPsec forwarding using transport mode
- C. additional bandwidth for headend
- D. IPsec forwarding using tunnel mode

Answer: A

NEW QUESTION 30

An infrastructure team is concerned about the shared memory utilization of a device, and for this reason, they need to monitor the device state. Which solution limits impact on the device and provides the required data?

- A. IPFIX
- B. static telemetry
- C. on-change subscription
- D. periodic subscription

Answer: A

NEW QUESTION 33

Which design consideration should be observed when EIGRP is configured on Data Center switches?

- A. Perform manual summarization on all Layer 3 interfaces to minimize the size of the routing table.
- B. Prevent unnecessary EIGRP neighborships from forming across switch virtual interfaces.
- C. Lower EIGRP hello and hold timers to their minimum settings to ensure rapid route reconvergence.
- D. Configure multiple EIGRP autonomous systems to segment Data Center services and applications.

Answer: A

NEW QUESTION 34

Company A recently acquired another company. Users of the newly acquired company must be able to access a server that exists on Company A's network, both companies use overlapping IP address ranges. Which action conserves IP address space and provides access to the server?

- A. Use a single IP address to create overload NAT
- B. Use a single IP address to create a static NAT entry
- C. Build one-to-one NAT translation for every user that needs access

D. Re-IP overlapping address space in the acquired company

Answer: A

NEW QUESTION 37

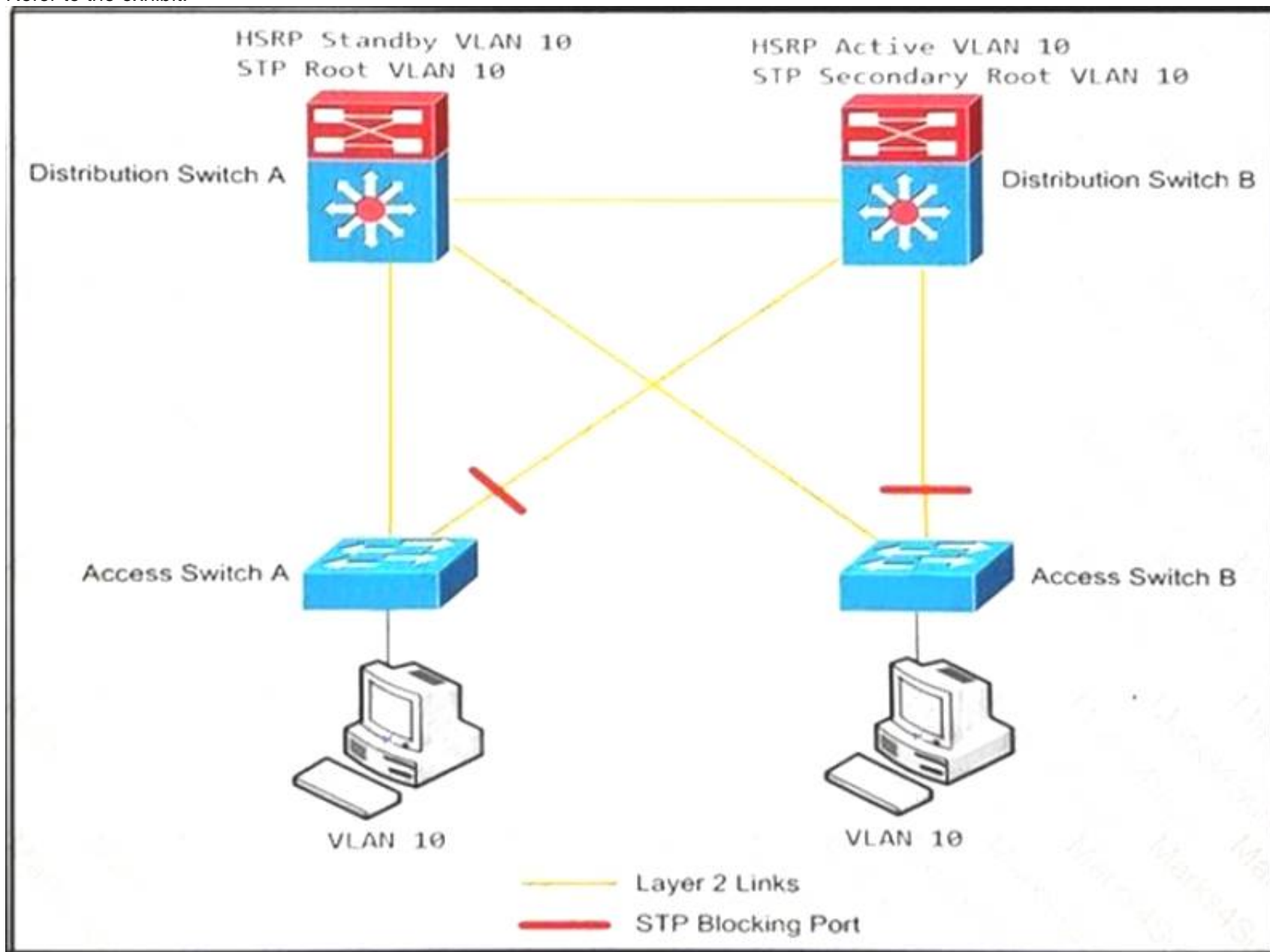
How do endpoints inside an SD-Access network reach resources outside the fabric?

- A. a VRF fusion router is used to map resources in one VN to another VN
- B. Fabric borders use VRFs to map VNs to VRFs
- C. SD-Access transit links are used to transport encapsulated traffic from one fabric to another
- D. A fabric edge is used to de-encapsulate VXLAN traffic to normal IP traffic then transported over the outside network

Answer: D

NEW QUESTION 40

Refer to the exhibit.



An engineer must optimize the traffic flow of the network. Which change provides a more efficient design between the access and the distribution layer?

- A. Add a link between access switch A and access switch B
- B. Reconfigure the distribution switch A to become the HSRP Active
- C. Change the link between distribution switch A and distribution switch B to be a routed link
- D. Create an EtherChannel link between distribution switch A and distribution switch B

Answer: B

NEW QUESTION 41

An engineer is working with NETCONF and Cisco NX-OS based devices. The engineer needs a YANG model that supports a specific feature relevant only to Cisco NX-OS. Which model must the engineer choose?

- A. Native
- B. IEEE
- C. OpenConfig
- D. IETF

Answer: D

NEW QUESTION 46

Which two BGP features will result in successful route exchanges between eBGP neighbors sharing the same AS number? (Choose two.)

- A. advertise-best-external
- B. bestpath as-path ignore
- C. client-to-client reflection

- D. as-override
- E. allow-as-in

Answer: DE

NEW QUESTION 50

Which NETCONF operation creates filtering that is specific to the session notifications?

- A. <create-subscription>
- B. <commit>
- C. <notification>
- D. <logging>

Answer: A

NEW QUESTION 51

A router running ISIS is showing high CPU and bandwidth utilization. An engineer discovers that the router is configured as L1/L2 and has L1 and L2 neighbors. Which step optimizes the design to address the issue?

- A. Make this router a DIS for each of the interfaces
- B. Disable the default behavior of advertising the default route on the L1/L2 router
- C. Configure the router to be either L1 or L2
- D. Configure each interface as either L1 or L2 circuit type

Answer: D

NEW QUESTION 56

Drag and drop the characteristics from the left onto the correct telemetry mode on the right.

The collector initiates a session to the device	Dial-In
supports TCP, UDP, and gRPC	
The device initiates a session to the collector	Dial-Out
supports gRPC only	

- A. Mastered
- B. Not Mastered

Answer: A

Explanation:

In a dial-in mode, the destination initiates a session to the router and subscribes to data to be streamed. Dialin mode is supported over gRPC in only 64-bit platforms

In a dial-out mode, the router initiates a session to the destinations based on the subscription. All 64-bit IOS XR platforms (except for NCS 6000 series routers) support gRPC and TCP protocols. All 32-bit IOS XR platforms support only TCP.

NEW QUESTION 57

A company is using OSPF between its HQ location and a branch office. HQ is assigned area 0 and the branch office is assigned area 1. The company purchases a second branch office, but due to circuit delays to HQ, it decides to connect the new branch office to the existing branch office as a temporary measure. The new branch office is assigned area 2. Which OSPF configuration enables all three locations to exchange routes?

- A. The existing branch office must be configured as a stub area
- B. A virtual link must be configured between the new branch office and HQ
- C. A sham link must be configured between the new branch office and HQ
- D. The new branch office must be configured as a stub area

Answer: B

NEW QUESTION 59

.....

Thank You for Trying Our Product

* 100% Pass or Money Back

All our products come with a 90-day Money Back Guarantee.

* One year free update

You can enjoy free update one year. 24x7 online support.

* Trusted by Millions

We currently serve more than 30,000,000 customers.

* Shop Securely

All transactions are protected by VeriSign!

100% Pass Your 300-420 Exam with Our Prep Materials Via below:

<https://www.certleader.com/300-420-dumps.html>