

PL-600 Dumps

Microsoft Power Platform Solution Architect

<https://www.certleader.com/PL-600-dumps.html>



NEW QUESTION 1

HOTSPOT

You are designing a Power Platform solution for a company that provides in-home appliance maintenance. When a customer schedules a service appointment, a dispatcher assigns one technician for a specific time and location. The solution must capture information about the technician assigned to each appointment and the list of tools that the technician must bring to the appointment.

You need to recommend the data type for the captured information.

Which data type should you use? To answer, select the appropriate options in the answer area.

NOTE: Each correct selection is worth one point.

Hot Area:

Answer Area

Requirement	Data type
Capture information about the technician assigned to each service appointment.	<div>▼</div> <div>Choice</div> <div>Choices</div> <div>Customer</div> <div>Lookup</div>
Select the tools that the technician must bring to an appointment.	<div>▼</div> <div>Choices</div> <div>Customer</div> <div>Lookup</div> <div>Text</div>

- A. Mastered
- B. Not Mastered

Answer: A

Explanation:

Box 1: Choice

Like Choices below, but can only select one of the option.

Incorrect Answers:

- Customer: A lookup column that you can use to specify a customer, which can be an account or contact.
- Lookup: Data in one table often relates to data in another table. For example, you might have a Teachers table and a Class table, and the Class table might have a lookup relation to the Teachers table to show which teacher teaches the class. You can use a lookup column to show data from the Teachers table. This is commonly referred to as a lookup column.

The LookUp function finds the first record in a table that satisfies a formula. Use LookUp to find a single record that matches one or more criteria. For both, the formula is evaluated for each record of the table

Box 2: Choices

You can customize forms (main, quick create, and quick view) and email templates by adding multi-select columns that are called Choices. When you add a choices column, you can specify multiple values that will be available for users to select. When users fill out the form they can select one, multiple, or all the values displayed in a drop-down list.

Reference: <https://docs.microsoft.com/en-us/powerapps/maker/data-platform/types-of-fields>

NEW QUESTION 2

You are designing a Power Platform solution.

The company wants its development team to adopt the construction of repeatable components for its implementation team to reuse on different entities and forms.

You need to recommend a technology that meets these requirements.

Which technology would you recommend the developers adopt to assist the implementation team?

- A. JavaScript
- B. Power Apps Component Framework control
- C. Web resource
- D. Canvas app

Answer: B

Explanation:

Power Apps component framework empowers professional developers and app makers to create code components for model-driven and canvas apps (public preview) to provide enhanced user experience for the users to work with data on forms, views, and dashboards.

Reference: <https://docs.microsoft.com/en-us/powerapps/developer/component-framework/overview>

NEW QUESTION 3

You are a Power Platform consultant for an internet support company.

The company lacks a budget to buy third-party ISVs or add-ons. The company requires a new system that achieves the following:

All support issues must come in by email, need to be logged, and assigned to the support group.

Accounts must synchronize with the parent company Oracle database.

Reports must be sent to the executives on a weekly basis.

No custom code will be used in the system.

You need to recommend the components that should be configured.

Which two components should you recommend? Each correct answer presents part of the solution.

NOTE: Each correct selection is worth one point.

- A. Power Virtual Agents
- B. Microsoft Dataverse
- C. server-side synchronization
- D. Microsoft Customer Voice

Answer: BD

Explanation:

The Dynamics 365 Customer Voice data is stored in Microsoft Dataverse.

Dynamics 365 Customer Voice is an enterprise feedback management application you can use to easily keep track of the customer metrics that matter the most to your business. ... It provides a personalized experience, enabling you to collect customer feedback and get relevant insights quickly and easily, all in a few clicks.

Incorrect Answers:

A: Power Virtual Agents lets you create powerful chatbots that can answer questions posed by your customers, other employees, or visitors to your website or service.

Reference: <https://docs.microsoft.com/en-us/dynamics365/customer-voice/about> <https://docs.microsoft.com/en-us/dynamics365/customer-voice/data-flow>

NEW QUESTION 4

DRAG DROP

You need to recommend the appropriate messaging channel solutions for the organization.

What should you recommend? To answer, drag the appropriate messaging options to the correct user types. Each messaging option may be used once, more than once, or not at all. You may need to drag the split bar between panes or scroll to view content.

NOTE: Each correct selection is worth one point.

[MISSING]

- A. Mastered
- B. Not Mastered

Answer: A

Explanation:

Box 1: Omnichannel for Customer Service dashboard

Scenario: Workers must be able to communicate in near real-time with worker support agents.

The company has a team of worker support agents that respond to inquiries from current and prospective workers. Some of the worker support agents are multilingual.

If you choose to expand your customer service offering to provide chat and channels, the Customer Service workspace seamlessly adjusts to support managing conversations as well.

Note: As an agent with the Customer Service Representative security role, when you open Customer Service workspace, you start on the Customer Service Agent Dashboard unless your administrator has changed the default view. This dashboard shows you your active cases, cases you can work in queues you are assigned to, and your open activities. You can open existing cases and activities or begin working new cases from the queues you are assigned to and create activities.

Box 2: Dynamics 365 Customer Service

Scenario: First Up uses an on-premises system to manage current and historical patient data including medications and medical visits. Reference:

<https://docs.microsoft.com/en-us/dynamics365/customer-service/csw-overview>

NEW QUESTION 5

You need to recommend a reporting solution for the organization.

Which two options should you recommend? Each correct answer presents a complete solution.

NOTE: Each correct selection is worth one point.

- A. AI Builder
- B. SQL Server Reporting Services (SSRS)
- C. Dynamics 365
- D. Power BI

Answer: BC

Explanation:

The reporting and analytics team must be able to create reports that include data from all facilities and all workers.

Management reports must present an overview of the entire organization. Other reports may be limited to specific offices.

B: Power Apps apps can include reports that provide useful business information to the user. These reports are based on SQL Server Reporting Services and provide the same set of features that are available for typical SQL Server Reporting Services reports.

C: Microsoft Dynamics 365 online and Model-Driven PowerApps offers several advanced reporting options. Advanced reports are often necessary when business requirements demand complex calculations, returning multiple data sets, grouping large sets of data based on rules, and retrieving data from different data sources.

Incorrect Answers:

D: Scenario: Users cannot view Power BI reports within the Power Platform apps.

Note: Power BI enables data insights and better decision-making, while Power Apps enables everyone to build and use apps that connect to business data. Using the Power Apps visual, you can pass context-aware data to a canvas app, which updates in real time as you make changes to your report.

Reference: <https://docs.microsoft.com/en-us/powerapps/maker/model-driven-apps/add-reporting-to-app> <https://powerusers.microsoft.com/t5/Building-Power-Apps/Creating-SSRS-Report-for-Model-Driven-PowerApps/td-p/621866> <https://docs.microsoft.com/en-us/powerapps/maker/canvas-apps/powerapps-custom-visual>

NEW QUESTION 6

You need to recommend a solution for handling data entry requirements for the mobile audit teams. What are two possible ways to achieve the goal? Each correct answer presents a complete solution. NOTE: Each correct selection is worth one point.

- A. Canvas app within Power Apps Player

- B. Canvas app within a browser
- C. Dynamics 365 Field Service
- D. Dynamics 365 App for Outlook

Answer: AB

Explanation:

Audit teams must have the ability to view worker information on their mobile devices.

Audit teams must be able to record data during visits to locations where workers are placed.

When you create an app, or someone shares an app with you, you can run that app on the Power Apps mobile app or in a web browser. Reference:

<https://docs.microsoft.com/en-us/powerapps/user/run-app-browser>

NEW QUESTION 7

You need to recommend a solution for creating the initial inspection checklists.

What should you recommend?

- A. Power Apps Maker portal
- B. Dataverse for Teams
- C. Power Apps Studio
- D. Data Migration utility

Answer: B

Explanation:

Scenario: Standardized checklists must be stored in the solution for use by inspectors. A copy must be created when a new inspection is initiated.

Dataverse for Teams – built on Microsoft Dataverse – provides relational data storage, rich data types, enterprise-grade governance, and one-click solution deployment to the Microsoft Teams app store. Dataverse for teams table creation has all of the things that are great about Microsoft Lists, without the major downsides.

Reference: <https://docs.microsoft.com/en-us/powerapps/teams/create-table> Question Set 1

NEW QUESTION 8

HOTSPOT

You are designing the security model for a Power Platform solution. The security model must meet the following requirements:

Restrict sharing of data between Power Automate connectors.

Ensure that environment administrators only see users who require access in the enabled user list. You need to recommend security features for the solution.

What should you recommend? To answer, select the appropriate options in the answer area.

NOTE: Each correct selection is worth one point.

Hot Area:

Answer Area

Requirement	Feature
Restrict sharing of data between Power Automate connectors	<div><div></div><div>Security group</div><div>Data loss prevention policy</div></div>
Ensure that environment administrators only see users who require access in the enabled user list.	<div><div></div><div>Security group</div><div>Data loss prevention policy</div></div>

- A. Mastered
- B. Not Mastered

Answer: A

Explanation:

Box 1: Data loss prevention policy

Data loss prevention (DLP) policies enforce rules for which connectors can be used together by classifying connectors as either Business or Non-Business. If you put a connector in the Business group, it can only be used with other connectors from that group in any given app or flow. Sometimes you might want to block the usage of certain connectors altogether by classifying them as Blocked.

Box 2: Security group

If your company has multiple Microsoft Dataverse environments, you can use security groups to control which licensed users can be a member of a particular environment.

Reference:

<https://docs.microsoft.com/en-us/power-platform/admin/wp-data-loss-prevention>

<https://docs.microsoft.com/en-us/power-platform/admin/control-user-access>

NEW QUESTION 9

You are designing a database table for a client.

You have the following requirements:

– Maintain a comprehensive list of colors and their corresponding RGB values and hexadecimal values. Prevent the addition of duplicate colors based on the hexadecimal value for the color.

You need to recommend a design for the table.

Which two actions should the client perform after the table is created? Each correct answer presents part of the solution.

NOTE: Each correct selection is worth one point.

- A. Mark the hex value column as business required.
- B. Configure and schedule a recurring bulk record deletion job.
- C. Create alternate keys for the table.
- D. Mark the RGB value column as business required.

Answer: BC

Explanation:

B: Setting a column to Business Required means that the default behavior of a model-driven or canvas app will enforce this requirement in the app.

C: With alternate keys you can now define a column in a Dataverse table to correspond to a unique identifier (or unique combination of columns) used by the external data store. This alternate key can be used to uniquely identify a record in Dataverse in place of the primary key. You must be able to define which columns represent a unique identity for your records. Once you identify the columns that are unique to the table, you can declare them as alternate keys through the customization user interface (UI) or in the code.

Reference: <https://docs.microsoft.com/en-us/powerapps/maker/data-platform/create-edit-field-portal> <https://docs.microsoft.com/en-us/powerapps/developer/data-platform/define-alternate-keys-entity>

NEW QUESTION 10

A company has a Power Platform environment that connects to a third-party marketing application.

The company reports that the data in the Power Platform lead table does not match data from the marketing application. Issues include:

- The owner data in the lead table and the third-party application do not match.
- The Topic column has more information than the related record from the marketing application. There are differences in how telephone numbers are formatted.

You need to determine which processes are causing the issues.

Which three processes may be causing the differences observed? Each correct answer presents a complete solution.

NOTE: Each correct selection is worth one point.

- A. Dataflow
- B. Business rule
- C. Classic workflow
- D. Power Automate cloud flow
- E. Duplicate detection rule

Answer: ABC

Explanation:

A: With advanced data preparation available in Power Apps, you can create a collection of data called a dataflow, which you can then use to connect with business data from various sources, clean the data, transform it, and then load it to Microsoft Dataverse or your organization's Azure Data Lake Gen2 storage account.

– B: By combining conditions and actions, you can do any of the following with business rules: Set column values

Clear column values

Set column requirement levels Show or hide columns

Enable or disable columns

Validate data and show error messages

Create business recommendations based on business intelligence.

C: Duplicate detection works by comparing generated match codes of existing records with each new record being created. These match codes are created as each new record is created. Therefore, there is potential for one or more duplicate records to be created if they are processed at the exact same moment. In addition to detecting duplicates as they are created, you should schedule duplicate detection jobs to check for other potential duplicate records.

Reference:

<https://docs.microsoft.com/en-us/powerapps/maker/data-platform/data-platform-create-business-rule>

<https://docs.microsoft.com/en-us/powerapps/maker/data-platform/create-and-use-dataflows>

<https://docs.microsoft.com/en-us/powerapps/developer/data-platform/duplicaterule-entities>

NEW QUESTION 10

HOTSPOT

You need to ensure that the solution meets the data security and compliance requirements. What should you recommend? To answer, select the appropriate options in the answer area. NOTE: Each correct selection is worth one point.

Hot Area:

Answer Area

Scenario

Relationship behavior

A worker transfers to a new client company.

	▼
Assign: Cascade All	
Assign: Cascade None	
Merge: Cascade All	
Rollup View: Cascade All	

A user deletes a worker's job placement history.

	▼
Delete: Cascade All	
Delete: Remove Link	
Delete: Restrict	

- A. Mastered
- B. Not Mastered

Answer: A

Explanation:

Box 1: Assign: Cascade None

Scenario: Worker still records must be archived after ten years and are then removed from the main system. Assign: The referenced table record owner is changed.

Cascade None: Do nothing.

Incorrect Answers:

Cascade All: Perform the action on all referencing table records associated with the referenced table record. Box 2: Delete: Restrict

Scenario: Worker information must not be deleted from the system while skill and job placement history records for the worker exist in the system.

Referential, Restrict Delete: In a referential, restrict delete relationship between two tables, you can navigate to any related rows. Actions taken on the parent row will not be applied to the child row, but the parent row cannot be deleted while the child row exists. This is useful if you do not want child rows to become orphaned. This forces the user to delete all of the children before deleting the parent.

Reference: <https://docs.microsoft.com/en-us/powerapps/maker/data-platform/data-platform-entity-lookup>

Testlet 3 Case study

This is a case study. Case studies are not timed separately. You can use as much exam time as you would like to complete each case. However, there may be additional case studies and sections on this exam. You must manage your time to ensure that you are able to complete all questions included on this exam in the time provided.

To answer the questions included in a case study, you will need to reference information that is provided in the case study. Case studies might contain exhibits and other resources that provide more information about the scenario that is described in the case study. Each question is independent of the other questions in this case study.

At the end of this case study, a review screen will appear. This screen allows you to review your answers and to make changes before you move to the next section of the exam. After you begin a new section, you cannot return to this section.

To start the case study

To display the first question in this case study, click the Next button. Use the buttons in the left pane to explore the content of the case study before you answer the questions. Clicking these buttons displays information such as business requirements, existing environment, and problem statements. If the case study has an All Information tab, note that the information displayed is identical to the information displayed on the subsequent tabs. When you are ready to answer a question, click the Question button to return to the question.

Background

Relecloud provides regional air service in North America. The company uses a variety of systems, apps, and services to manage the business. You are hired to design a new solution to manage passenger information, reservations, and maintenance.

Current environment

The company uses Microsoft Office 365.

The company has a custom app for managing and tracking passenger luggage. The app uses Microsoft Dataverse.

For flights longer than four hours, passengers receive a meal. Customers can select a meal when they make a reservation and can save the meal choices as a customer preference.

The company offers two types of meals: standard and vegetarian. Meal types can be temporarily unavailable. The airline is considering offering other meal types, such as gluten-free and low-sodium options. The company uses paper-based reservation checklists to help ensure that all the steps for a reservation are complete.

The company uses vendors to service aircraft.

Environment

Ensure that employees can sign in to all Microsoft apps by using one set of credentials per employee. Minimize the use of third-party products and custom development.

Reduce customer support call volumes by having the system automatically resolve common issues.

The security rule for agents must contain the privileges in the default Customer Service Representative security role.

Log issues as cases. The case form must show variable sections based on the case type. Include a custom entity named Seats and grant agents access to the entity. Application use layout should be role specific.

Agents

You must standardize the format used by agents to enter customer phone numbers. Agents need a solution to replace paper reservation checklists.

Agents need dashboards to show a current count of all reservations on the entity. Agents need a way to track reservation issues.

Agents need a visual indicator in the interface to determine the reservation step to provide a seamless customer experience.

Agents need different versions of cancellation policies to send customers. One version must be controllable within the system. Agents need to view which pieces of luggage match to each passenger, and then need to add the total on the passenger record.

IT

IT staff needs a mobile solution to see IT cases at the top of the menu since this is their primary focus. IT staff needs a system that is easy to navigate to active cases.

IT specialists want to design Power BI reports. They need to understand the underlying table relationships of the system. IT specialists need a solution that is visual rather than text-based so they can quickly complete their tasks.

Management

Management requires paginated reports for stakeholders.

Management wants to provide frequent flyers with better service when the flyers call.

Managers need to see all customer dashboards at the top of their menu on their mobile device.

Maintenance

Maintenance supervisors must not have access to Dynamics 365 Customer Service. The supervisors must be able to communicate with the contracts team about contracts. Aircraft maintenance vendors must have only view and upload privileges to their invoices and receipts. Contracts with maintenance companies must be stored in Dynamics 365 Customer Service.

NEW QUESTION 14

DRAG DROP

You need to recommend a solution for integrating luggage information.

What should you recommend? To answer, drag the appropriate types to the correct tables. Each type may be used once, more than once, or not at all. You may need to drag the split bar between panes or scroll to view content.

NOTE: Each correct selection is worth one point.

Select and Place:

Answer Area

Types	Table	Type
Custom table	Luggage	
Virtual table		
Activity table	Passenger	
Custom activity table		

- A. Mastered
- B. Not Mastered

Answer: A

Explanation:

Luggage: Custom activity table

An activity can be thought of as any action for which an entry can be made on a calendar. An activity has time dimensions (start time, stop time, due date, and duration) that help determine when the action occurred or will occur. Activities also contain data that helps determine what action the activity represents, for example, subject and description.

Passenger: Customer table

The account and contact tables in Microsoft Dataverse are essential for identifying and managing customers, selling products and services, and providing superior service to the customers. A customer address table is used to store address and shipping information for a customer.

Scenario: The company has a custom app for managing and tracking passenger luggage. The app uses Microsoft Dataverse. Agents need to view which pieces of luggage match to each passenger, and then need to add the total on the passenger record.

Incorrect Answers:

.. A virtual table is a custom table in Dataverse that has columns containing data from an external data source. Virtual tables appear in your app to users as regular table rows, but contain data that is sourced from an external database dynamically at runtime, such as an Azure SQL Database.

NEW QUESTION 15

HOTSPOT

You need to recommend a solution to meet user interface requirements.

What should you recommend? To answer, select the appropriate options in the answer area.

NOTE: Each correct selection is worth one point.

Hot Area:

Answer Area

Requirement	Solution
Visual representation of gauge readings with minimum and maximum tolerances.	<div><div></div><div>Create and embed a Power BI radial gauge. Create and embed a custom visualization component. Create and embed a standard Power Apps donut chart.</div></div>
Add visibility to the manufacturing inspection records for onsite technicians.	<div><div></div><div>Configure mobile offline synchronization. Add an inspection order to the work order form Modify the sitemap for Dynamics 365 Field Service.</div></div>

- A. Mastered

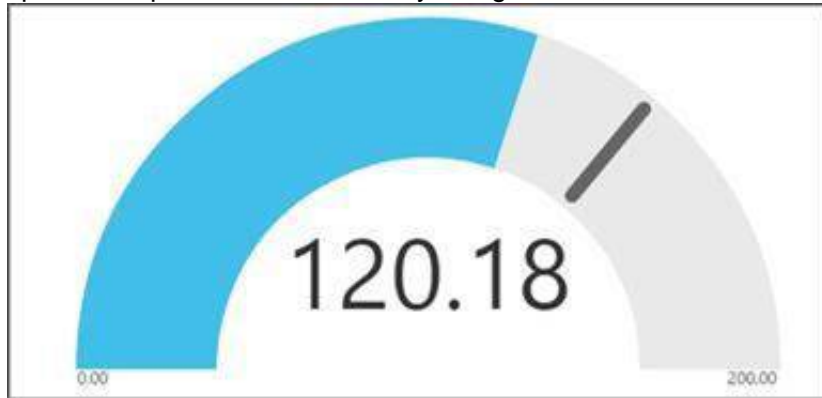
B. Not Mastered

Answer: A

Explanation:

Box 1: Create and embed a Power BI radial gauge

A radial gauge chart has a circular arc and shows a single value that measures progress toward a goal or a Key Performance Indicator (KPI). The line (or needle) represents the goal or target value. The shading represents the progress toward that goal. The value inside the arc represents the progress value. Power BI spreads all possible values evenly along the arc, from the minimum (left-most value) to the maximum (right-most value).

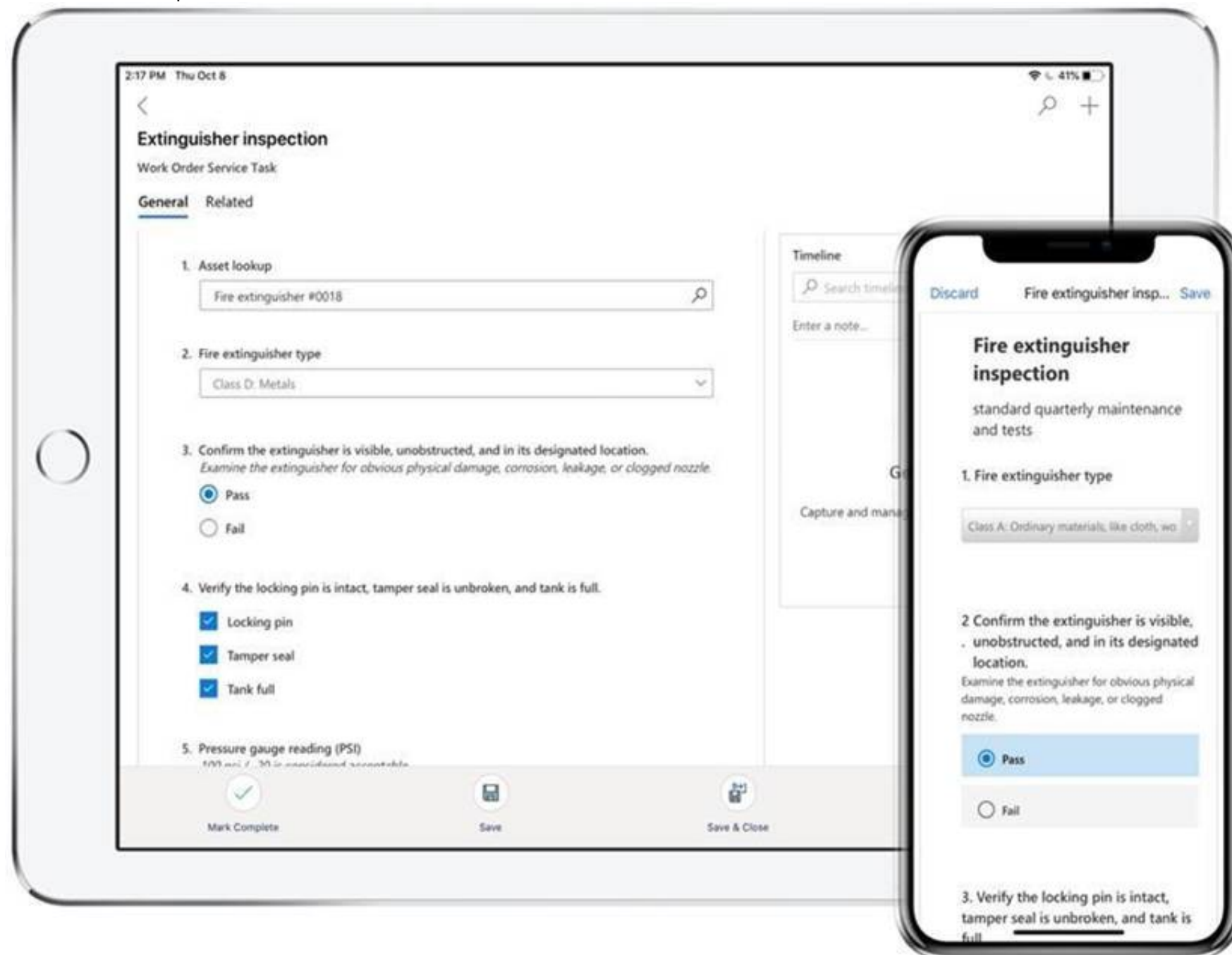


In this example, you're a car retailer tracking the sales team's average sales per month. The needle represents a 140 cars sales goal. The minimum possible average sales is 0 and the maximum is 200. The blue shading shows that the team is averaging approximately 120 sales this month.

Box 2: Add an inspection order to the work order form

You can add inspections to work orders in Dynamics 365 Field Service.

Field Service inspections are digital forms that technicians use to quickly and easily answer a list of questions as part of a work order. The list of questions can include safety protocols, pass-and-fail tests for a customer asset, an interview with a customer, or other audits and assessments performed before, during, or after a work order. Example:



Reference:

<https://docs.microsoft.com/en-us/power-bi/visuals/power-bi-visualization-radial-gauge-charts>

<https://docs.microsoft.com/en-us/dynamics365/field-service/inspections>

NEW QUESTION 20

.....

Thank You for Trying Our Product

* 100% Pass or Money Back

All our products come with a 90-day Money Back Guarantee.

* One year free update

You can enjoy free update one year. 24x7 online support.

* Trusted by Millions

We currently serve more than 30,000,000 customers.

* Shop Securely

All transactions are protected by VeriSign!

100% Pass Your PL-600 Exam with Our Prep Materials Via below:

<https://www.certleader.com/PL-600-dumps.html>