



Cisco

Exam Questions 200-901

Developing Applications and Automating Workflows using Cisco Core Platforms (DEVASC)

NEW QUESTION 1

Refer to the exhibit.

URL: https://<ASA_IP>/api/access/global/rules

Method: POST

Payload:

```
{
  "destinationAddress": {
    "kind": "IPv4Address",
    "value": "10.1.1.1"
  },
  "remarks": [ ],
  "active": true
  "permit": true,
  "sourceAddress": {
    "kind": "IPv4Address",
    "value": "192.168.1.1"
  }
}
```

Response Status Code: 400 Bad Request

```
{
  "messages": [
    {
      "level": "Error",
      "code": "JSON-PARSE-ERROR",
      "details": "Unexpected character ('\"' (code 34)):"
    }
  ]
}
```

Which JSON is equivalent to the XML –encoded data?

List Messages

Lists all messages in a room. Each message will include content attachments if present.

The list sorts the messages in descending order by creation date.

Long result sets will be split into [pages](#).

GET /v1/messages

Query Parameters

roomId
string **Required**
List messages in a room, by ID.

mentionedPeople
array
List messages with these people mentioned, by ID.
Use me as a shorthand for the current API user.

before
string
List messages sent before a date and time.

beforeMessage
string
List messages sent before a message, by ID.

max
number
Limit the maximum number of messages in the response.
Default: **50**

Try it **Example**

GET /v1/messages(?roomId,mentionedPeople,before,beforeMessage)

Header

Authorization ☒ Use personal access token

Bearer

This limited-duration personal access token is hidden for your security.

Query Parameters

roomId
Required
e.g. Y2lzY29zcGFyazovL3VzL1JPT00vYmJj

mentionedPeople
e.g. Y2lzY29zcGFyazovL3VzL1BFT1BMRS6

before
e.g. 2016-04-2Tfj:9:01:55:966Z

beforeMessage
e.g. Y2lzY29zcGFyazovL3VzL1FU1NBROL

max
e.g. 100

Run

```
bash-3.2$ curl -H "Content-Type: application/json" -H "Authorization:
Fj2zzzykEa091ic9GK2j8LtE1Hk1Hk1H6oRHPQdw1Pat60i7ndtHHnWzL2b5pqMg14Kk_B9EI59isacLy7-
NarA02n9H-tGgt-SxQ39iDejgcs" -i -X POST -d "{ \"roomId\":
\"Y2geK53sjEknosrc7SwQ5ZGL99pHgiuScB7DfNvU8Xx4wDKLiPORcEkryAnM3QmK9LQZsP0G4\"
, \"text\": \"test2\" }" https://api.ciscospark.com/v1/messages

HTTP/1.1 401 Unauthorized
Via: 1.1 linker
TrackingID: ROUTER_5E0FDC8C-EB6F-01BB-00EF-806BF1BD00EF
Date: Sat, 04 Jan 2020 00:30:04 GMT
Server: Redacted
Content-Length: 267
Content-Type: application/json
Strict-Transport-Security: max-age=63072000; includeSubDomains; preload

{"message":"The request requires a valid access token set in the Authorization request
header.", "errors":[{"description":"The request requires a valid access token set in the
Authorization request
header."}], "trackingId":"ROUTER_5E0FDC8C-EB6F-01BB-00EF-806BF1BD00EF"}

bash-3.2$
```

- A. Option A
- B. Option B
- C. Option C
- D. Option D

Answer: A

NEW QUESTION 2

Refer to the exhibit.

```
curl -X GET -H "Accept: application/json" \
-H "Authorization: Bearer AbCdEf123456" https://localhost/api/myresource
```

A process on the host wants to access the service running inside this Docker container. Which port is used to make a connection?

- A. only outbound connections between 3000 and 5000 are possible
- B. port 3000
- C. any port between 3000 and 5000
- D. port 5000

Answer: B

NEW QUESTION 3

Refer to the exhibit.

DELETE	Create
GET	Read
PATCH	Update
POST	Update
PUT	Delete

A REST API return this JSON output for a GET HTTP request, Which has assigned to a variable called “vegetables” Using python, which output is the result of this command?

DELETE	POST
GET	GET
PATCH	PATCH
POST	PUT
PUT	DELETE

- A. Lettuce
- B. Kiwi
- C. ['kiwi', 'grape']
- D. {'color': 'green', 'items': ['kiwi', 'grape']}

Answer: B

NEW QUESTION 4

Fill in the blanks to complete the python script to request a service ticket using the APIC-EM rest API for the user “devnetuser”.

The focus is on advanced planning and outcome prediction.

Users receive functional software and can provide feedback after the product is available.

The timeline is followed and feedback is gathered before product completion.

Developers respond to requirement changes throughout the development process.

Agile

Waterfall

- A. Mastered
- B. Not Mastered

Answer: A

Explanation:

Solution as below

The focus is on advanced planning and outcome prediction.

Users receive functional software and can provide feedback after the product is available.

The timeline is followed and feedback is gathered before product completion.

Developers respond to requirement changes throughout the development process.

Agile

The focus is on advanced planning and outcome prediction.

Developers respond to requirement changes throughout the development process.

Waterfall

Users receive functional software and can provide feedback after the product is available.

The timeline is followed and feedback is gathered before product completion.

NEW QUESTION 5

Which statement about authentication a RESTCONF API session with a router that runs Cisco IOS XE software is true?

- A. OAuth must be used.
- B. A token must be retrieved and the associated string must be embedded in the X-Auth-Token header.
- C. Basic authentication must be used.
- D. No authentication is required.

Answer: C

NEW QUESTION 6

Refer to the exhibit.

```
$ pyang -f tree Cisco-IOS-XE-native.yang
module: Cisco-IOS-XE-native
  +--rw native
    +--rw logging
      +--rw monitor|
        +--rw severity?  logging-level-type

$ curl --insecure -v -X PATCH \
  "https://ios-xe-mgmt-latest.cisco.com:9443/restconf/data/Cisco-IOS-XE-native:native" \
  -H 'Authorization: Basic ZGV2ZWxvcGVyOkMxc2NmMTIzNDU=' -H 'Accept: application/yang-data+json' \
  -H 'Content-Type: application/yang-data+json' \
  -d '{ "Cisco-IOS-XE-native:native" : { "logging" : { "monitor" : { "severity" : "alerts" }} } }'
> ...
< ...
< HTTP/1.1 204 No Content
```

What is represented in this YANG module?

- A. interface management
- B. topology
- C. BGP
- D. OpenFlow

Answer: A

NEW QUESTION 7

Which is an advantage of using network programmability?

- A. It removes CLI access for devices.
- B. It provides for more scalable and replicable network provisioning.
- C. Manual configuration is faster.
- D. No cloud abstraction occurs.

Answer: B

NEW QUESTION 8

Refer to the exhibit.

URL: https://<ASA_IP>/api/access/global/rules

Method: POST

Payload:

```
{
  "destinationAddress": {
    "kind": "IPv4Address",
    "value": "10.1.1.1"
  },
  "remarks": [ ],
  "active": true,
  "permit": true,
  "sourceAddress": {
    "kind": "IPv4Address",
    "value": "192.168.1.1"
  }
}
```

Response Status Code: 400 Bad Request

```
{
  "messages": [
    {
      "level": "Error",
      "code": "JSON-PARSE-ERROR",
      "details": "Unexpected character ('\"' (code 34)):"
    }
  ]
}
```

What caused the error in this API request?

- A. The API resource does not support the POST operation
- B. The API resource does not support JSON format payloads.
- C. The submitted JSON payload includes a field that is not supported by the API resource.
- D. The submitted JSON payload has a formatting issue

Answer: D

NEW QUESTION 9

Refer to the exhibit.

List the clients that have used this network in the timespan

HTTP REQUEST

GET /networks/{networkId}/clients

PARAMETERS

t0
The beginning of the timespan for the data. The maximum lookback period is 31 days from today.

timespan
The timespan for which the information will be fetched. If specifying timespan, do not specify parameter t0. The value must be in seconds and be less than or equal to 31 days. The default is 1 day.

perPage
The number of entries per page returned. Acceptable range is 3 - 1000. Default is 10.

startingAfter
A token used by the server to indicate the start of the page. Often this is a timestamp or an ID but it is not limited to those. This parameter should not be defined by client applications. The link for the first, last, prev, or next page in the HTTP Link header should define it.

endingBefore
A token used by the server to indicate the end of the page. Often this is a timestamp or an ID but it is not limited to those. This parameter should not be defined by client applications. The link for the first, last, prev, or next page in the HTTP Link header should define it.

base_url = "https://api.meraki.com/api/v0"

```
def process_devices(dnac, token):
    url = "https://{}/api/v1/network-device".format(dnac['host'])
    headers["x-auth-token"] = token
    response = requests.get(url, headers=headers, verify=False)
    data = response.json()
    for item in data['response']:
        print(item["hostname"], " ", item["managementIpAddress"])
```

Drag and drop the code from the left code from the left onto the item number on the right to complete the Meraki code to obtain a list of client which have used this network.

Multi-Cloud automation and orchestration platform for Cisco and third-party servers, networks, storage, and converged infrastructure.	UCS Manager
Software as a Service Platform that enables Cisco infrastructure management, automation and orchestration from anywhere.	UCS Director
Embedded software that enables Cisco server, fabric, and storage provisioning.	Intersight

- A. Mastered
- B. Not Mastered

Answer: A

Explanation:

1 - d, 2 - f, 3 - b, 4 - h, 5 - i, 6 - j, 7 - g, 8 - a, 9 - c, 10 - e

NEW QUESTION 10

Which two NETCONF operations cover the RESTCONF GET operation? (Choose two.)

- A. <get>
- B. <edit>
- C. <get-update>
- D. <modify-config>
- E. <get-config>

Answer: AE

NEW QUESTION 10

Which platform has an API that be used to obtain a list of vulnerable software on user devices?

- A. Cisco Umbrella
- B. Cisco Firepower
- C. Cisco Identity Services Engine
- D. Cisco Advanced Malware Protection

Answer: D

NEW QUESTION 15

Refer to the exhibit.

FROM ubuntu:12.04	informs Docker that the container listens on the specified network port(s) at runtime
VOLUME ["/var/www", "/var/log/apache2", "/etc/apache2"]	creates a mount point with the specified name
RUN apt-get update && apt-get install -y --force-yes apache2	configures a container that runs as an executable
ENTRYPOINT ["/usr/sbin/apache2ctl", "-D", "FOREGROUND"]	must be the first instruction in the Docker file
EXPOSE 1521	

Fill in the blank to complete the query parameter and value so that the result set is returned in reverse chronological order (most recent first) based on when message were entered.

FROM ubuntu:12.04	EXPOSE 1521
VOLUME ["/var/www", "/var/log/apache2", "/etc/apache2"]	VOLUME ["/var/www", "/var/log/apache2", "/etc/apach
RUN apt-get update && apt get install -y --force-yes apache	ENTRYPOINT ["/usr/sbin/apache2ctl", "-D", "FOREGROU
ENTRYPOINT ["/usr/sbin/apache2ctl", "-D", "FOREGROUND"]	FROM ubuntu:12.04
EXPOSE 1521	

- A. Mastered
B. Not Mastered

Answer: A

Explanation:

?sortBy=lastactivity

```
<books>
  <science>
    <biology>10.00</biology>
    <geology>9.00</geology>
    <chemistry>8.00</chemistry>
  </science>
  <math>
    <calculus>20.00</calculus>
    <algebra>12.00</algebra>
  </math>
</books>
```

NEW QUESTION 20

Which action resolves a 401 error in response to an HTTP GET that is issued to retrieve statement using RESTCONF on a CSR 1000V?

- A. Change the HTTP method to PUT.
B. Change the transport protocol to HTTPS.
C. Check the MIMF types in the HTTP headers.
D. Check the authentication credentials.

Answer: D

NEW QUESTION 22

Which CI/CD tool is an automation tool used to build, test, and deploy software?

- A. Nagios
B. Gradle
C. Jenkins
D. Git

Answer: C

NEW QUESTION 24

Which two statements are true about Cisco UCS manager, Cisco Intersight APIs? (Choose two.)

- A. Cisco Intersight API interactions can be encoded in XML or JSON and require an APIs key in the HTTP header for authentication.
- B. USC Director API interactions can be XML- or JSON-encoded and require an APLs key in the HTTP header for authentication.
- C. UCS manager API interactions are XML-encoded and require a cookie in the method for authentication.
- D. Cisco Intersight uses XML to encoded API interactions and requires an API key pair for authentication.
- E. UCS manager uses JSON to encode API interactions and utilizes Base64-encoded credentials in the HTTP header for authentication.

Answer: BC

NEW QUESTION 28

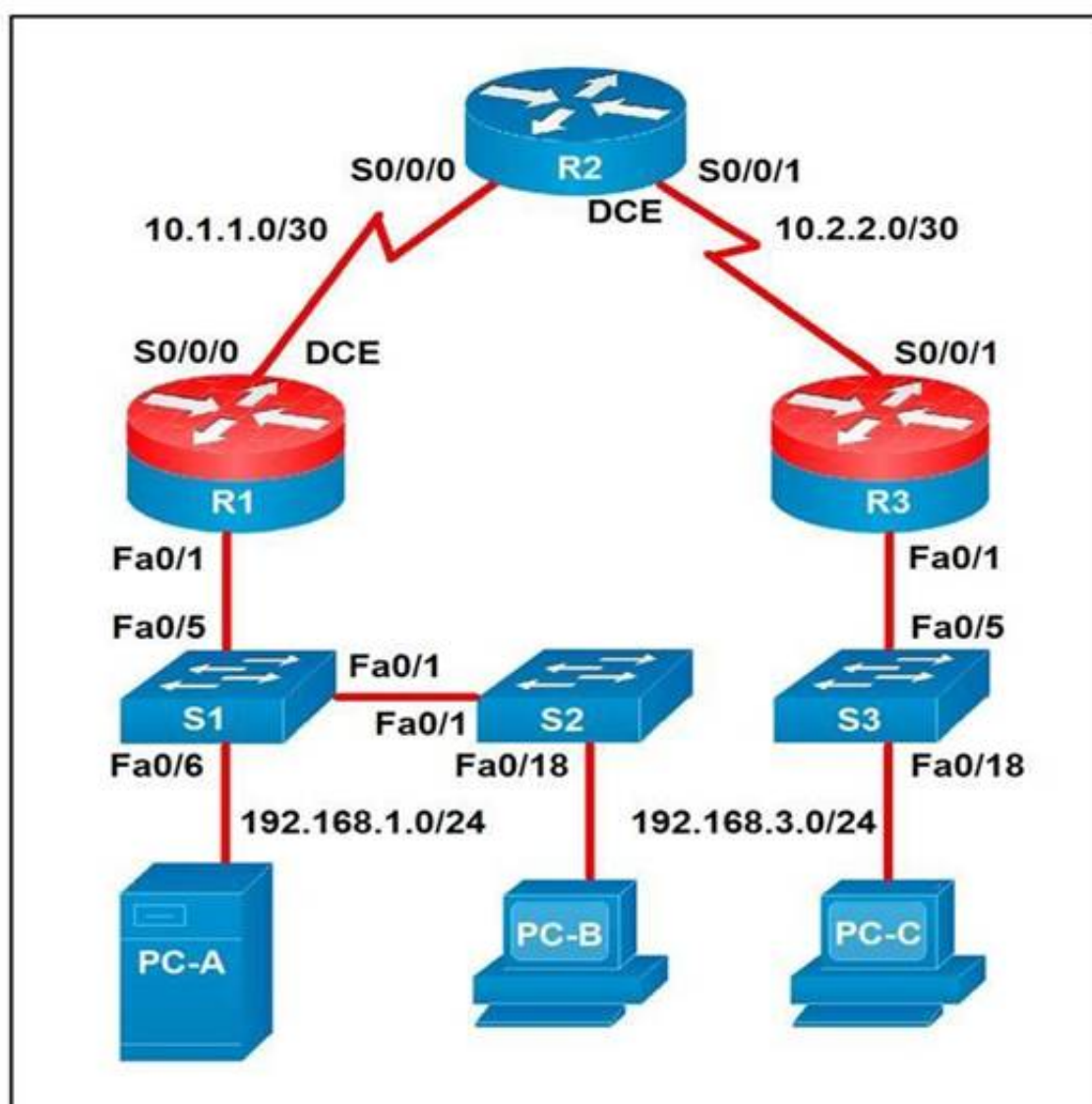
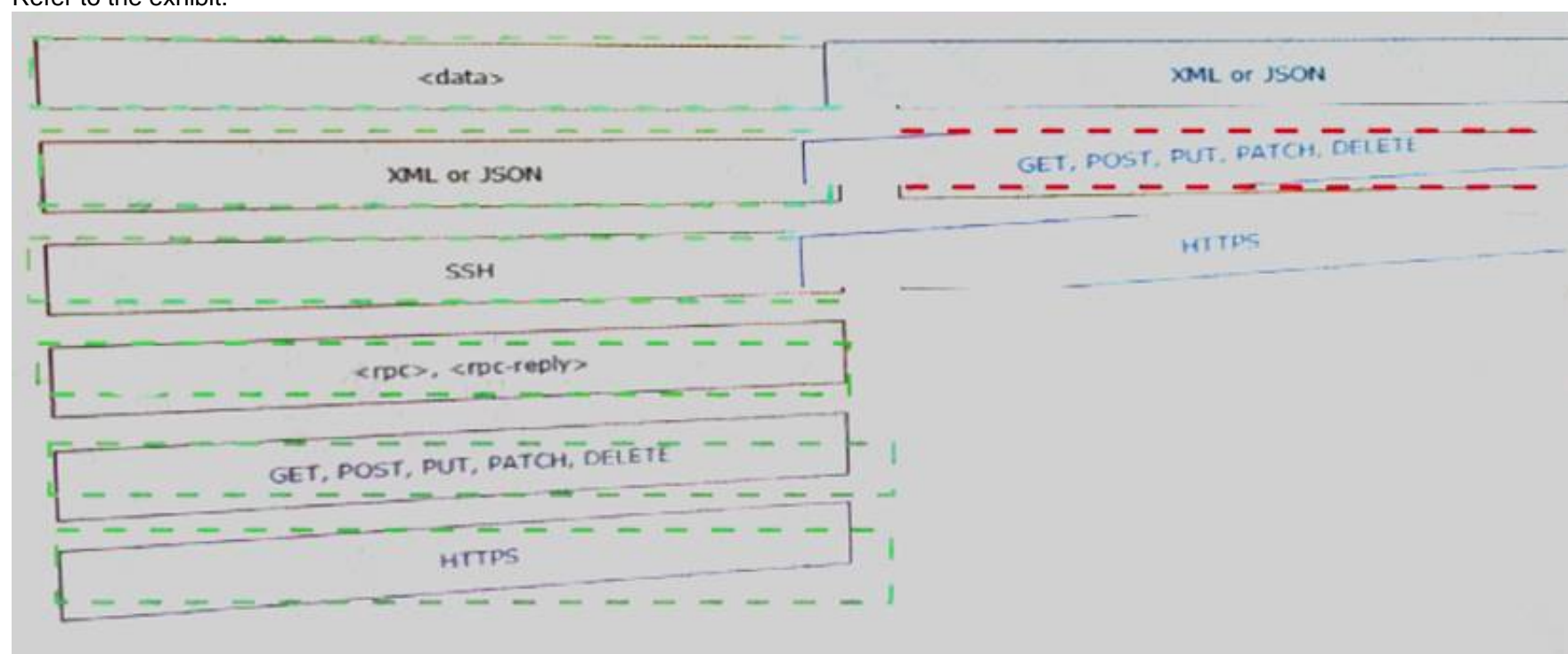
A developer is reviewing a code that was written by a colleague. It runs fine, but there are many lines of code to do a seemingly simple task repeatedly. Which action organizes the code?

- A. Refactor the code by removing any unnecessary tests
- B. Using functions, rewrite any pieces of code that are repeated
- C. Reverse engineer and rewrite the code logic
- D. Modify the code to use loops

Answer: B

NEW QUESTION 33

Refer to the exhibit.



A developer is troubleshooting an API with the given API with the given API documentation and cURL command. What is the cause of this problem?

- A. The user is not allowed to post messages from their account
- B. The request body is missing or incomplete
- C. The API token specified is expired
- D. The authorization header is missing or incomplete

Answer: C

NEW QUESTION 35

Drag and drop elements of the RESTCONF protocol stack from the left onto the correct description on the right. Not all elements on the left are used.

```
List the networks in a Meraki organization:

GET https://api.meraki.com/api/v0/organizations/<org_id>/networks
Response code: 200
Response body: [ {
  "id": <network_id>,
  "name": "Test Network",
  "organization_id": <new_org_id>,
  "type": "wireless",
  "timeZone": "America/Los_Angeles",
  "tags": " test "
}]
```

- A. Mastered
- B. Not Mastered

Answer: A

Explanation:

1 – B, 2 – E, 3 - F

NEW QUESTION 36

Drag and drop the HTTP methods from the left onto their generally accepted corresponding create, read, update, and delete operations on the right.

```
"organization_id": <new_org_id>,
"type": "wireless",
"timeZone": "America/Los_Angeles",
"tags": " test "
}]
```

t. Fill in the blanks to complete the cURL command to list the networks in the Meraki organization with an Id of 384279060:

```
curl -X GET https://api.meraki.com/api/v0/organizations/384279060/networks \
-H 'X-Meraki-API-Key: $meraki_api_key'
```

- A. Mastered
- B. Not Mastered

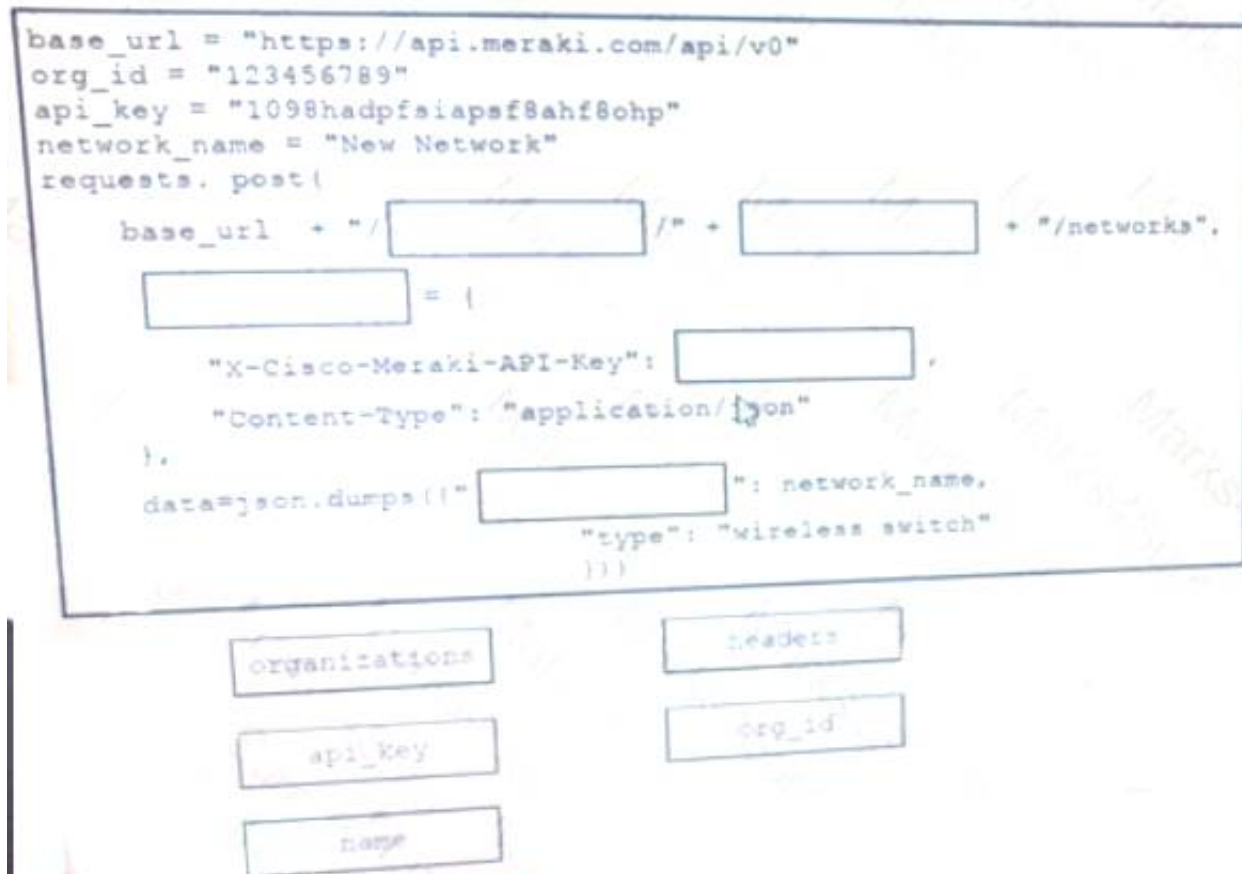
Answer: A

Explanation:

1 – D, 2 – B, 3 – C, 4 – E, 5 – A

NEW QUESTION 41

Drag and drop the functionalities from the left onto correct networking devices on the right.



- A. Mastered
- B. Not Mastered

Answer: A

Explanation:

1 – D, 2 – C, 3 – A, 4 – B

NEW QUESTION 42

Which two statements describe the advantages of using a version control system? (Choose two.)

- A. It allows for branching and merging so that different tasks are worked on in isolation before they are merged into a feature or master branch.
- B. It allows multiple engineers to work against the same code and configuration files and manage differences and conflicts.
- C. It provides tooling to automate application builds and infrastructure provisioning.
- D. It allows developers to write effective unit tests.
- E. It provides a system to track User Stories and allocate to backlogs.

Answer: AB

NEW QUESTION 47

Which task is performed because the test-driven development approach is being used?

- A. testing existing software before developing new code
- B. refactoring code that is covered by existing tests
- C. writing code without committing any coding violations
- D. creating test scenarios based on continuous development

Answer: B

NEW QUESTION 51

In DNS, which record specifies an alias that refers to another name that ultimately resolves to an IP address?

- A. AAA
- B. SOA
- C. NS
- D. CNAME

Answer: D

NEW QUESTION 56

Which device is a system that monitors and controls incoming and outgoing network traffic based on predetermined security rules?

- A. Switch
- B. Router
- C. Firewall
- D. Load balancer

Answer: C

NEW QUESTION 60

Refer to the exhibit.

URL: https://<ASA_IP>/api/access/global/rules

Method: POST

Payload:

```
{
  "destinationAddress": {
    "kind": "IPv4Address",
    "value": "10.1.1.1"
  },
  "remarks": [ ],
  "active": true,
  "permit": true,
  "sourceAddress": {
    "kind": "IPv4Address",
    "value": "192.168.1.1"
  }
}
```

Response Status Code: 400 Bad Request

```
{
  "messages": [
    {
      "level": "Error",
      "code": "JSON-PARSE-ERROR",
      "details": "Unexpected character ('\"' (code 34)):"
    }
  ]
}
```

What is the function of the python script?

- A. Count and print the total number of available devices.
- B. Iterate over a list of network devices and write all device names and management IP addresses to an output file.
- C. Iterate over a list of network devices and write all device type and associated management IP address.
- D. For each device that is returned, display the device and, for each device, print the device name and management IP address.
- E. Loop through the returned list of network devices and, for each device, print the device name management IP address.

Answer: E

NEW QUESTION 61

Which principle is a value from the manifesto for Agile software development?

- A. adhering to a plan over responding to requirements
- B. detailed documentation over working software
- C. processes and tools over teams and inter actions
- D. customer collaboration over contract negotiation

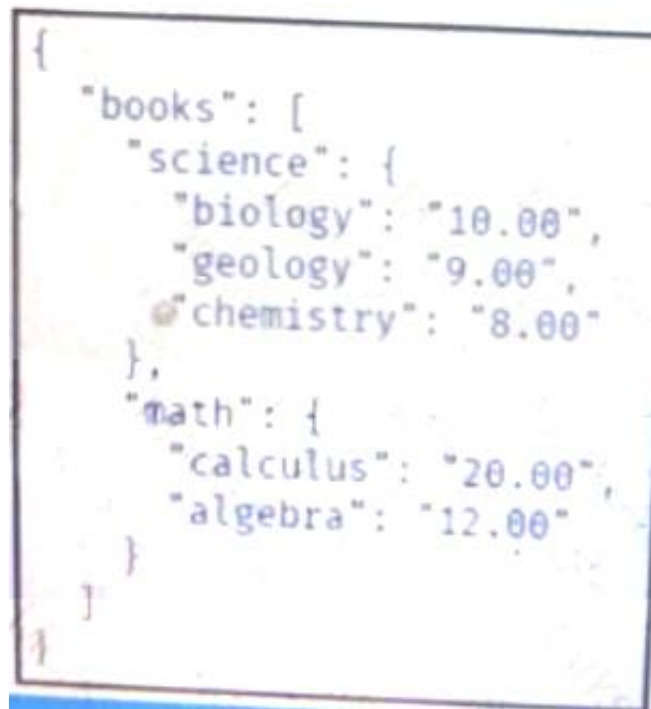
Answer: D

NEW QUESTION 65

Refer to the exhibit.

```
{
  "books": [
    "science", {
      "biology": "10.00",
      "geology": "9.00",
      "chemistry": "8.00"
    },
    "math", {
      "calculus": "20.00",
      "algebra": "12.00"
    }
  ]
}
```

Drag and drop the variables from the left onto the item numbers on the right that match the missing assignments in the exhibit.



- A. Mastered
- B. Not Mastered

Answer: A

Explanation:
1 – A, 2 – C, 3 – B

NEW QUESTION 70

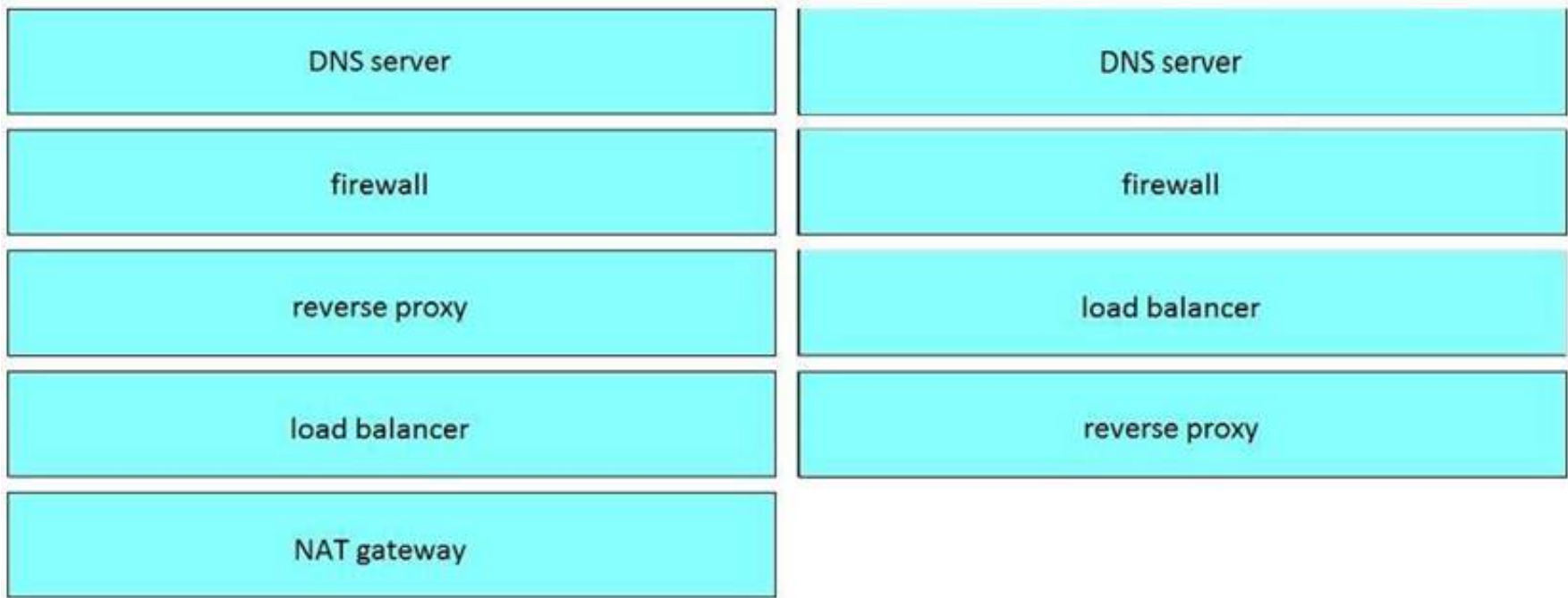
Which mechanism is used to consume a RESTful API design when large amounts of data are returned?

- A. Data sets
- B. Scrolling
- C. Blobs
- D. Pagination

Answer: D

NEW QUESTION 75

Refer to the exhibit.



Which two statements about the network diagram are true? (Choose two.)

- A. PC-A and PC-B are in the same subnet.
- B. One of the routers has two connected serial interfaces.
- C. The subnet of PC-C can contain 256 hosts.
- D. R1 and R3 are in the same subnet.
- E. The subnet address of PC-B has 18 bits dedicated to the network portion.

Answer: BC

NEW QUESTION 78

Which platform is run directly using a hypervisor?

- A. Virtual
- B. Bare metal systems
- C. Containers
- D. Applications

Answer: C

NEW QUESTION 80

Which detail is included in a routing table?

- A. IP protocol
- B. Broadcast address
- C. TCP or UDP port number
- D. Destination next hop or outgoing interface

Answer: D

NEW QUESTION 82

On which network plane is routing protocol traffic handled?

- A. data plane
- B. management plane
- C. authentication plane
- D. control plane

Answer: D

NEW QUESTION 83

Which two statements about JSON and XML are true? (Choose two.)

- A. JSON objects are collection of key value pairs.
- B. The syntax of JSON contains tags, elements, and attributes.
- C. JSON arrays are an unordered set of key value pairs.
- D. The syntax of XML contains tags, elements, and attributes.
- E. XML objects are collections of key-value pairs.

Answer: AD

NEW QUESTION 88

What are two advantages of the Model-view-controller software design pattern? (Choose two.)

- A. simplifies network automation
- B. allows for multiple views of the same model
- C. makes code easier to deploy using CI/CD pipelines
- D. reduces need for error handling
- E. separates responsibilities of the code, which makes future modifications easier

Answer: BE

NEW QUESTION 89

Which two statements describe the traits of an asynchronous API call? (Choose two.)

- A. The order in which API calls return can be guaranteed
- B. A call to an API does not block the code, but rather it allows application processing to continue
- C. The end user can experience latency or performance lag while waiting for the API call to return
- D. Code execution blocks or waits for the call to an API to return.
- E. A callback function typically is used to process the response from an API call

Answer: BE

NEW QUESTION 92

A company has written a script that creates a log bundle from the Cisco DNA Center every day. The script runs without error and the bundles are produced. However, when the script is run during business hours, report poor voice quality of phones calls. What explains this behavior?

- A. The application is running in the Voice VLAN and causes delays and jitter in the subnet.
- B. The speed and duplex settings in Cisco DNA Center are set incorrectly, which causes the transfer to be too slow.
- C. The script is written in a low-level programming language where there is no memory safety
- D. This causes a buffer overflow and disruption on the network.
- E. Generating the logs causes the CPU on the network controller to spike, which causes delays in forwarding the voice IP packets.

Answer: D

NEW QUESTION 94

Fill in the blanks to complete the statement.

Given a username of “devnet” And a password “Cisco123”, applications must create a base64 encoding of the string “_____” when sending HTTP requests to an API that uses _____ authentication.

Cisco DNA Center provides the capability to send an HTTP request to the API endpoint and receive the network list in format.

- A. Mastered
- B. Not Mastered

Answer: A

Explanation:

```
docker run -p 3000:5000 f877cbf2ff33
```

NEW QUESTION 97

Which statement describes the benefit of using functions in programming?

- A. Functions allow problems to be split into simpler, smaller groups, and reduce code repetition, which makes the code easier to read.
- B. Functions ensure that a developer understands the inner logic contained before using them as part of a script or application.
- C. Functions create the implementation of secret and encrypted algorithms.
- D. Functions store mutable values within a script 01 application.

Answer: A

NEW QUESTION 98

What is the purpose of the Cisco VIRL software tool?

- A. To verify configurations against compliance standards
- B. To simulate and model networks
- C. To automate API workflows
- D. To test performance of an application

Answer: B

NEW QUESTION 101

.....

About ExamBible

[Your Partner of IT Exam](#)

Found in 1998

ExamBible is a company specialized on providing high quality IT exam practice study materials, especially Cisco CCNA, CCDA, CCNP, CCIE, Checkpoint CCSE, CompTIA A+, Network+ certification practice exams and so on. We guarantee that the candidates will not only pass any IT exam at the first attempt but also get profound understanding about the certificates they have got. There are so many alike companies in this industry, however, ExamBible has its unique advantages that other companies could not achieve.

Our Advances

* 99.9% Uptime

All examinations will be up to date.

* 24/7 Quality Support

We will provide service round the clock.

* 100% Pass Rate

Our guarantee that you will pass the exam.

* Unique Gurantee

If you do not pass the exam at the first time, we will not only arrange FULL REFUND for you, but also provide you another exam of your claim, ABSOLUTELY FREE!

NEW QUESTION 1

Refer to the exhibit.

URL: https://<ASA_IP>/api/access/global/rules

Method: POST

Payload:

```

{
  "destinationAddress": {
    "kind": "IPv4Address",
    "value": "10.1.1.1"
  },
  "remarks": [ ],
  "active": true
  "permit": true,
  "sourceAddress": {
    "kind": "IPv4Address",
    "value": "192.168.1.1"
  }
}

```

Response Status Code: 400 Bad Request

```

{"messages":[{"level":"Error","code":"JSON-PARSE-ERROR","details":"
Unexpected character ('\'' (code 34)):"

```

Which JSON is equivalent to the XML –encoded data?

List Messages

Lists all messages in a room. Each message will include content attachments if present.

The list sorts the messages in descending order by creation date.

Long result sets will be split into [pages](#).

GET /v1/messages

Query Parameters

roomId
string **Required**
List messages in a room, by ID.

mentionedPeople
array
List messages with these people mentioned, by ID.
Use me as a shorthand for the current API user.

before
string
List messages sent before a date and time.

beforeMessage
string
List messages sent before a message, by ID.

max
number
Limit the maximum number of messages in the response.
Default: **50**

Try it **Example**

GET /v1/messages(?roomId,mentionedPeople,before,beforeMessage)

Header

Authorization ☒ Use personal access token

Bearer

This limited-duration personal access token is hidden for your security.

Query Parameters

roomId
Required
e.g. Y2lzY29zcGFyazovL3VzL1JPT00vYmJj

mentionedPeople
e.g. Y2lzY29zcGFyazovL3VzL1BFT1BMRS6

before
e.g. 2016-04-2Tfj:9:01:55:966Z

beforeMessage
e.g. Y2lzY29zcGFyazovL3VzL1FU1NBROL

max
e.g. 100

Run


```
bash-3.2$ curl -H "Content-Type: application/json" -H "Authorization:
Fj2zzzykEa091ic9GK2j8LtE1Hk1Hk1H6oRHPQdw1Pat60i7ndtHHnWzL2b5pqMg14Kk_B9EI59isacLy7-
NarA02n9H-tGgt-SxQ39iDejgcs" -i -X POST -d "{ \"roomId\":
\"Y2geK53sjEknosrc7SwQ5ZGL99pHgiuScB7DfNvU8Xx4wDKLiPORcEkryAnM3QmK9LQZsP0G4\"
, \"text\": \"test2\" }" https://api.ciscospark.com/v1/messages

HTTP/1.1 401 Unauthorized
Via: 1.1 linker
TrackingID: ROUTER_5E0FDC8C-EB6F-01BB-00EF-806BF1BD00EF
Date: Sat, 04 Jan 2020 00:30:04 GMT
Server: Redacted
Content-Length: 267
Content-Type: application/json
Strict-Transport-Security: max-age=63072000; includeSubDomains; preload

{"message": "The request requires a valid access token set in the Authorization request
header.", "errors": [{"description": "The request requires a valid access token set in the
Authorization request
header."}], "trackingId": "ROUTER_5E0FDC8C-EB6F-01BB-00EF-806BF1BD00EF"}

bash-3.2$
```

- A. Option A
- B. Option B
- C. Option C
- D. Option D

Answer: A

NEW QUESTION 2

Refer to the exhibit.

```
curl -X GET -H "Accept: application/json" \
-H "Authorization: Bearer AbCdEf123456" https://localhost/api/myresource
```

A process on the host wants to access the service running inside this Docker container. Which port is used to make a connection?

- A. only outbound connections between 3000 and 5000 are possible
- B. port 3000
- C. any port between 3000 and 5000
- D. port 5000

Answer: B

NEW QUESTION 3

Refer to the exhibit.

DELETE	Create
GET	Read
PATCH	Update
POST	Update
PUT	Delete

A REST API return this JSON output for a GET HTTP request, Which has assigned to a variable called “vegetables” Using python, which output is the result of this command?

DELETE	POST
GET	GET
PATCH	PATCH
POST	PUT
PUT	DELETE

- A. Lettuce
- B. Kiwi
- C. ['kiwi', 'grape']
- D. {'color': 'green', 'items': ['kiwi', 'grape']}

Answer: B

NEW QUESTION 4

Fill in the blanks to complete the python script to request a service ticket using the APIC-EM rest API for the user “devnetuser”.

The focus is on advanced planning and outcome prediction.

Users receive functional software and can provide feedback after the product is available.

The timeline is followed and feedback is gathered before product completion.

Developers respond to requirement changes throughout the development process.

Agile

Waterfall

- A. Mastered
- B. Not Mastered

Answer: A

Explanation:

Solution as below

The focus is on advanced planning and outcome prediction.

Users receive functional software and can provide feedback after the product is available.

The timeline is followed and feedback is gathered before product completion.

Developers respond to requirement changes throughout the development process.

Agile

The focus is on advanced planning and outcome prediction.

Developers respond to requirement changes throughout the development process.

Waterfall

Users receive functional software and can provide feedback after the product is available.

The timeline is followed and feedback is gathered before product completion.

NEW QUESTION 5

Which statement about authentication a RESTCONF API session with a router that runs Cisco IOS XE software is true?

- A. OAuth must be used.
- B. A token must be retrieved and the associated string must be embedded in the X-Auth-Token header.
- C. Basic authentication must be used.
- D. No authentication is required.

Answer: C

NEW QUESTION 6

Refer to the exhibit.

```
$ pyang -f tree Cisco-IOS-XE-native.yang
module: Cisco-IOS-XE-native
  +--rw native
    +--rw logging
      +--rw monitor|
        +--rw severity?  logging-level-type

$ curl --insecure -v -X PATCH \
  "https://ios-xe-mgmt-latest.cisco.com:9443/restconf/data/Cisco-IOS-XE-native:native" \
  -H 'Authorization: Basic ZGV2ZWxvcGVyOkMxc2NmMTIzNDU=' -H 'Accept: application/yang-data+json' \
  -H 'Content-Type: application/yang-data+json' \
  -d '{ "Cisco-IOS-XE-native:native" : { "logging" : { "monitor" : { "severity" : "alerts" }} } }'
> ...
< ...
< HTTP/1.1 204 No Content
```

What is represented in this YANG module?

- A. interface management
- B. topology
- C. BGP
- D. OpenFlow

Answer: A

NEW QUESTION 7

Which is an advantage of using network programmability?

- A. It removes CLI access for devices.
- B. It provides for more scalable and replicable network provisioning.
- C. Manual configuration is faster.
- D. No cloud abstraction occurs.

Answer: B

NEW QUESTION 8

Refer to the exhibit.

URL: https://<ASA_IP>/api/access/global/rules

Method: POST

Payload:

```
{
  "destinationAddress": {
    "kind": "IPv4Address",
    "value": "10.1.1.1"
  },
  "remarks": [ ],
  "active": true,
  "permit": true,
  "sourceAddress": {
    "kind": "IPv4Address",
    "value": "192.168.1.1"
  }
}
```

Response Status Code: 400 Bad Request

```
{
  "messages": [
    {
      "level": "Error",
      "code": "JSON-PARSE-ERROR",
      "details": "Unexpected character ('\"' (code 34)):"
    }
  ]
}
```

What caused the error in this API request?

- A. The API resource does not support the POST operation
- B. The API resource does not support JSON format payloads.
- C. The submitted JSON payload includes a field that is not supported by the API resource.
- D. The submitted JSON payload has a formatting issue

Answer: D

NEW QUESTION 9

Refer to the exhibit.

List the clients that have used this network in the timespan

HTTP REQUEST

GET /networks/{networkId}/clients

PARAMETERS

t0
The beginning of the timespan for the data. The maximum lookback period is 31 days from today.

timespan
The timespan for which the information will be fetched. If specifying timespan, do not specify parameter t0. The value must be in seconds and be less than or equal to 31 days. The default is 1 day.

perPage
The number of entries per page returned. Acceptable range is 3 - 1000. Default is 10.

startingAfter
A token used by the server to indicate the start of the page. Often this is a timestamp or an ID but it is not limited to those. This parameter should not be defined by client applications. The link for the first, last, prev, or next page in the HTTP Link header should define it.

endingBefore
A token used by the server to indicate the end of the page. Often this is a timestamp or an ID but it is not limited to those. This parameter should not be defined by client applications. The link for the first, last, prev, or next page in the HTTP Link header should define it.

base_url = "https://api.meraki.com/api/v0"

```
def process_devices(dnac, token):
    url = "https://{}/api/v1/network-device".format(dnac['host'])
    headers["x-auth-token"] = token
    response = requests.get(url, headers=headers, verify=False)
    data = response.json()
    for item in data['response']:
        print(item["hostname"], " ", item["managementIpAddress"])
```

Drag and drop the code from the left code from the left onto the item number on the right to complete the Meraki code to obtain a list of client which have used this network.

Multi-Cloud automation and orchestration platform for Cisco and third-party servers, networks, storage, and converged infrastructure.	UCS Manager
Software as a Service Platform that enables Cisco infrastructure management, automation and orchestration from anywhere.	UCS Director
Embedded software that enables Cisco server, fabric, and storage provisioning.	Intersight

- A. Mastered
- B. Not Mastered

Answer: A

Explanation:

1 - d, 2 - f, 3 - b, 4 - h, 5 - i, 6 - j, 7 - g, 8 - a, 9 - c, 10 - e

NEW QUESTION 10

Which two NETCONF operations cover the RESTCONF GET operation? (Choose two.)

- A. <get>
- B. <edit>
- C. <get-update>
- D. <modify-config>
- E. <get-config>

Answer: AE

NEW QUESTION 10

Which platform has an API that be used to obtain a list of vulnerable software on user devices?

- A. Cisco Umbrella
- B. Cisco Firepower
- C. Cisco Identity Services Engine
- D. Cisco Advanced Malware Protection

Answer: D

NEW QUESTION 15

Refer to the exhibit.

FROM ubuntu:12.04	informs Docker that the container listens on the specified network port(s) at runtime
VOLUME ["/var/www", "/var/log/apache2", "/etc/apache2"]	creates a mount point with the specified name
RUN apt-get update && apt-get install -y --force-yes apache2	configures a container that runs as an executable
ENTRYPOINT ["/usr/sbin/apache2ctl", "-D", "FOREGROUND"]	must be the first instruction in the Docker file
EXPOSE 1521	

Fill in the blank to complete the query parameter and value so that the result set is returned in reverse chronological order (most recent first) based on when message were entered.

FROM ubuntu:12.04	EXPOSE 1521
VOLUME ["/var/www", "/var/log/apache2", "/etc/apache2"]	VOLUME ["/var/www", "/var/log/apache2", "/etc/apach
RUN apt-get update && apt get install -y --force-yes apache	ENTRYPOINT ["/usr/sbin/apache2ctl", "-D", "FOREGROU
ENTRYPOINT ["/usr/sbin/apache2ctl", "-D", "FOREGROUND"]	FROM ubuntu:12.04
EXPOSE 1521	

- A. Mastered
B. Not Mastered

Answer: A

Explanation:

?sortBy=lastactivity

```
<books>
  <science>
    <biology>10.00</biology>
    <geology>9.00</geology>
    <chemistry>8.00</chemistry>
  </science>
  <math>
    <calculus>20.00</calculus>
    <algebra>12.00</algebra>
  </math>
</books>
```

NEW QUESTION 20

Which action resolves a 401 error in response to an HTTP GET that is issued to retrieve statement using RESTCONF on a CSR 1000V?

- A. Change the HTTP method to PUT.
B. Change the transport protocol to HTTPS.
C. Check the MIMF types in the HTTP headers.
D. Check the authentication credentials.

Answer: D

NEW QUESTION 22

Which CI/CD tool is an automation tool used to build, test, and deploy software?

- A. Nagios
B. Gradle
C. Jenkins
D. Git

Answer: C

NEW QUESTION 24

Which two statements are true about Cisco UCS manager, Cisco Intersight APIs? (Choose two.)

- A. Cisco Intersight API interactions can be encoded in XML or JSON and require an APIs key in the HTTP header for authentication.
- B. USC Director API interactions can be XML- or JSON-encoded and require an APLs key in the HTTP header for authentication.
- C. UCS manager API interactions are XML-encoded and require a cookie in the method for authentication.
- D. Cisco Intersight uses XML to encoded API interactions and requires an API key pair for authentication.
- E. UCS manager uses JSON to encode API interactions and utilizes Base64-encoded credentials in the HTTP header for authentication.

Answer: BC

NEW QUESTION 28

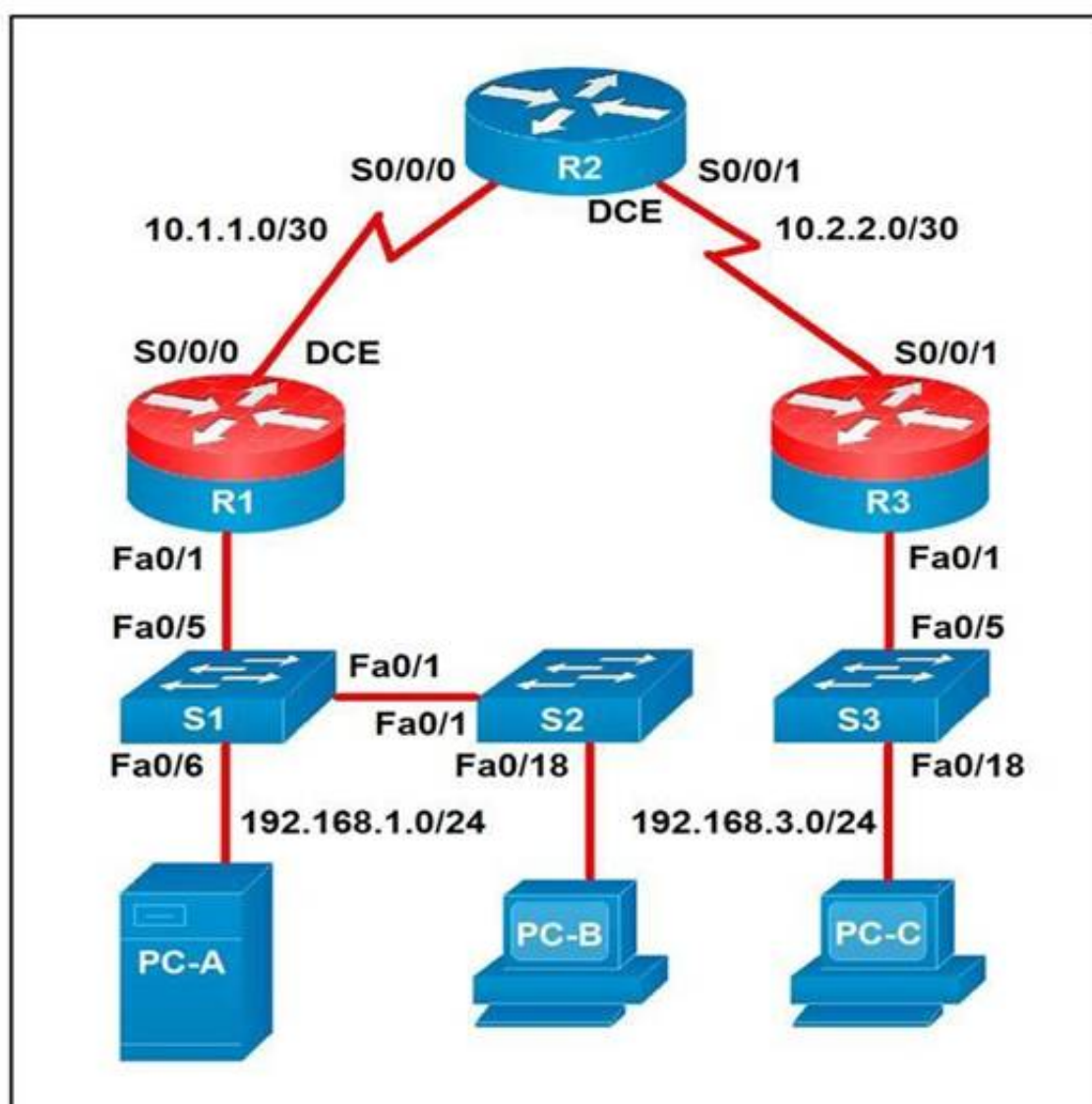
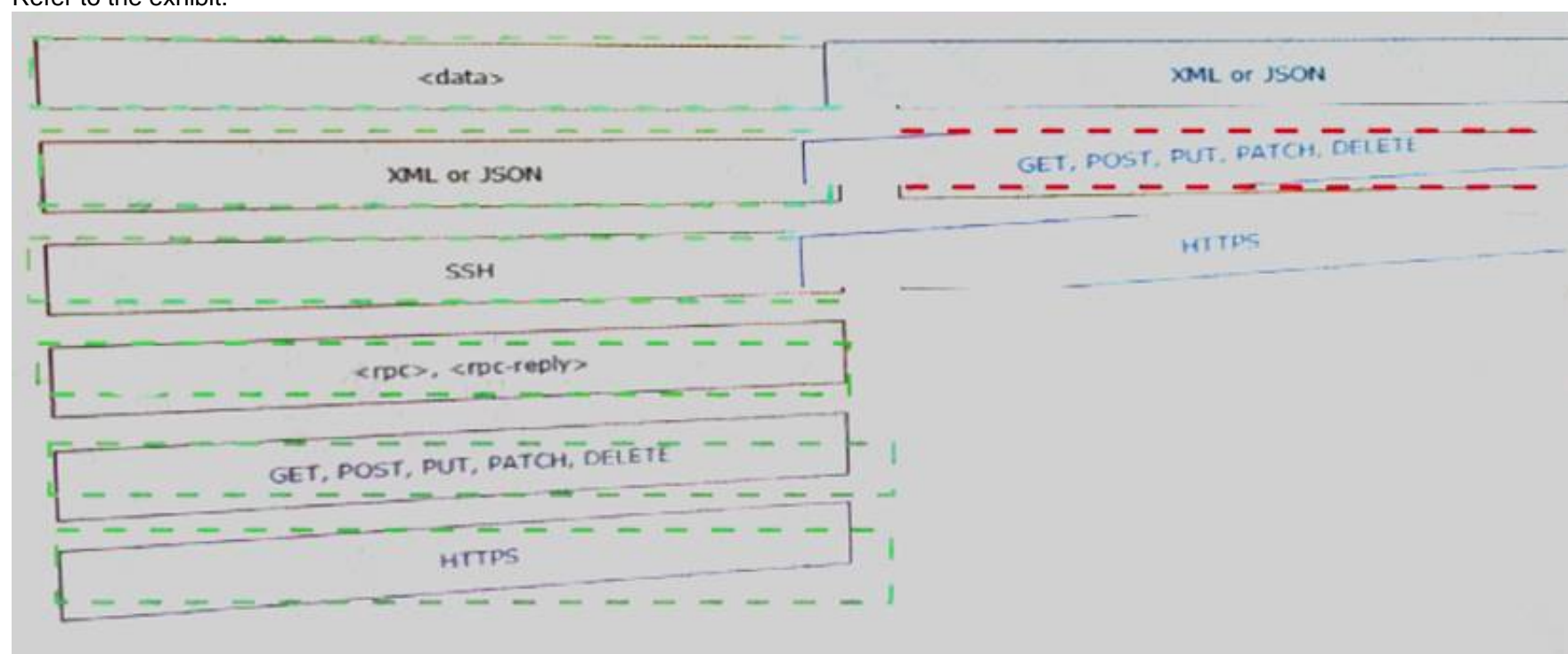
A developer is reviewing a code that was written by a colleague. It runs fine, but there are many lines of code to do a seemingly simple task repeatedly. Which action organizes the code?

- A. Refactor the code by removing any unnecessary tests
- B. Using functions, rewrite any pieces of code that are repeated
- C. Reverse engineer and rewrite the code logic
- D. Modify the code to use loops

Answer: B

NEW QUESTION 33

Refer to the exhibit.



A developer is troubleshooting an API with the given API with the given API documentation and cURL command. What is the cause of this problem?

- A. The user is not allowed to post messages from their account
- B. The request body is missing or incomplete
- C. The API token specified is expired
- D. The authorization header is missing or incomplete

Answer: C

NEW QUESTION 35

Drag and drop elements of the RESTCONF protocol stack from the left onto the correct description on the right. Not all elements on the left are used.

```
List the networks in a Meraki organization:

GET https://api.meraki.com/api/v0/organizations/<org_id>/networks
Response code: 200
Response body: [ {
  "id": <network_id>,
  "name": "Test Network",
  "organization_id": <new_org_id>,
  "type": "wireless",
  "timeZone": "America/Los_Angeles",
  "tags": " test "
} ]
```

- A. Mastered
- B. Not Mastered

Answer: A

Explanation:

1 – B, 2 – E, 3 - F

NEW QUESTION 36

Drag and drop the HTTP methods from the left onto their generally accepted corresponding create, read, update, and delete operations on the right.

```
{
  "organization_id": <new_org_id>,
  "type": "wireless",
  "timeZone": "America/Los_Angeles",
  "tags": " test "
} ]
```

t. Fill in the blanks to complete the cURL command to list the networks in the Meraki organization with an Id of 384279060:

```
curl -X GET https://api.meraki.com/api/v0/organizations/384279060/networks \
  -H 'X-Meraki-API-Key: $meraki_api_key'
```

- A. Mastered
- B. Not Mastered

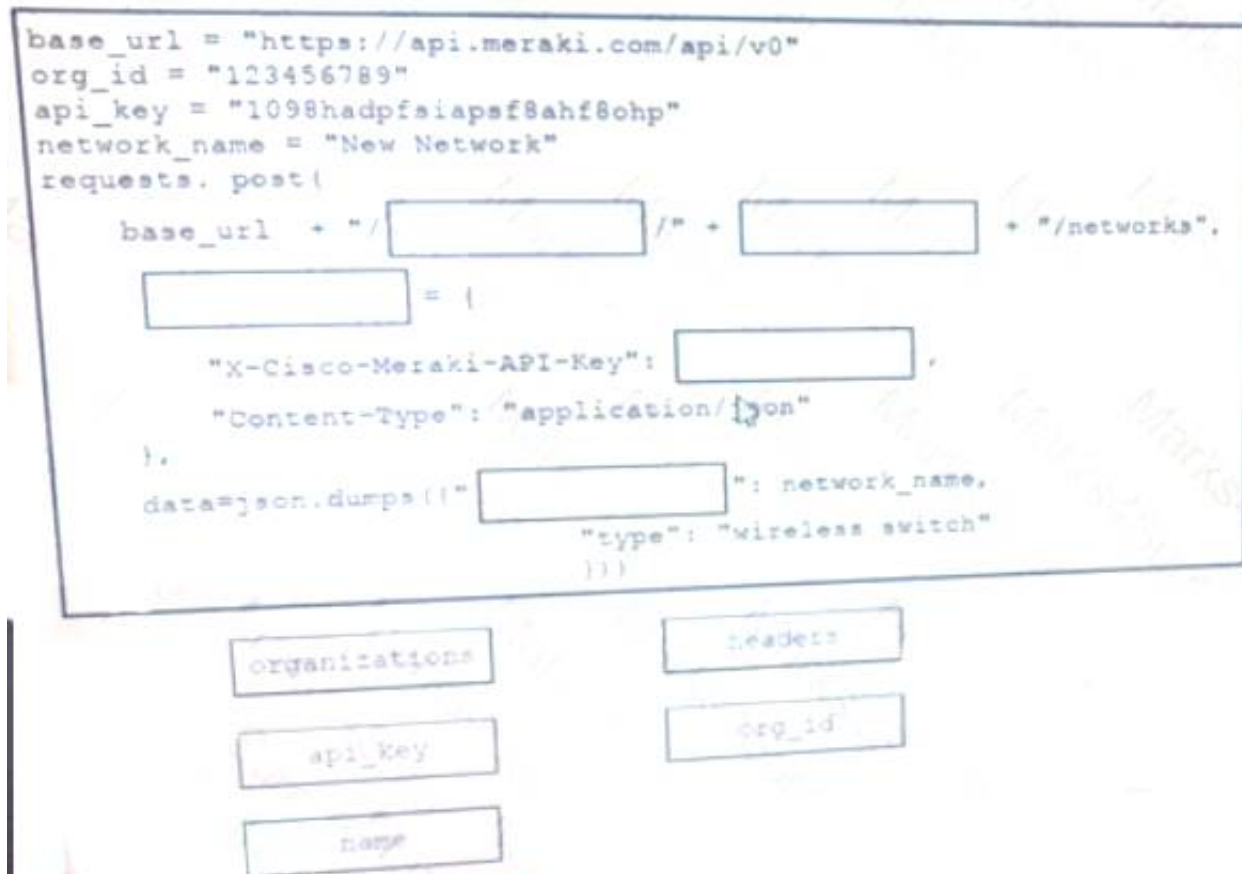
Answer: A

Explanation:

1 – D, 2 – B, 3 – C, 4 – E, 5 – A

NEW QUESTION 41

Drag and drop the functionalities from the left onto correct networking devices on the right.



- A. Mastered
- B. Not Mastered

Answer: A

Explanation:

1 – D, 2 – C, 3 – A, 4 – B

NEW QUESTION 42

Which two statements describe the advantages of using a version control system? (Choose two.)

- A. It allows for branching and merging so that different tasks are worked on in isolation before they are merged into a feature or master branch.
- B. It allows multiple engineers to work against the same code and configuration files and manage differences and conflicts.
- C. It provides tooling to automate application builds and infrastructure provisioning.
- D. It allows developers to write effective unit tests.
- E. It provides a system to track User Stories and allocate to backlogs.

Answer: AB

NEW QUESTION 47

Which task is performed because the test-driven development approach is being used?

- A. testing existing software before developing new code
- B. refactoring code that is covered by existing tests
- C. writing code without committing any coding violations
- D. creating test scenarios based on continuous development

Answer: B

NEW QUESTION 51

In DNS, which record specifies an alias that refers to another name that ultimately resolves to an IP address?

- A. AAA
- B. SOA
- C. NS
- D. CNAME

Answer: D

NEW QUESTION 56

Which device is a system that monitors and controls incoming and outgoing network traffic based on predetermined security rules?

- A. Switch
- B. Router
- C. Firewall
- D. Load balancer

Answer: C

NEW QUESTION 60

Refer to the exhibit.

URL: https://<ASA_IP>/api/access/global/rules

Method: POST

Payload:

```
{
  "destinationAddress": {
    "kind": "IPv4Address",
    "value": "10.1.1.1"
  },
  "remarks": [ ],
  "active": true,
  "permit": true,
  "sourceAddress": {
    "kind": "IPv4Address",
    "value": "192.168.1.1"
  }
}
```

Response Status Code: 400 Bad Request

```
{
  "messages": [
    {
      "level": "Error",
      "code": "JSON-PARSE-ERROR",
      "details": "Unexpected character ('\"' (code 34)):"
    }
  ]
}
```

What is the function of the python script?

- A. Count and print the total number of available devices.
- B. Iterate over a list of network devices and write all device names and management IP addresses to an output file.
- C. Iterate over a list of network devices and write all device type and associated management IP address.
- D. For each device that is returned, display the device and, for each device, print the device name and management IP address.
- E. Loop through the returned list of network devices and, for each device, print the device name management IP address.

Answer: E

NEW QUESTION 61

Which principle is a value from the manifesto for Agile software development?

- A. adhering to a plan over responding to requirements
- B. detailed documentation over working software
- C. processes and tools over teams and inter actions
- D. customer collaboration over contract negotiation

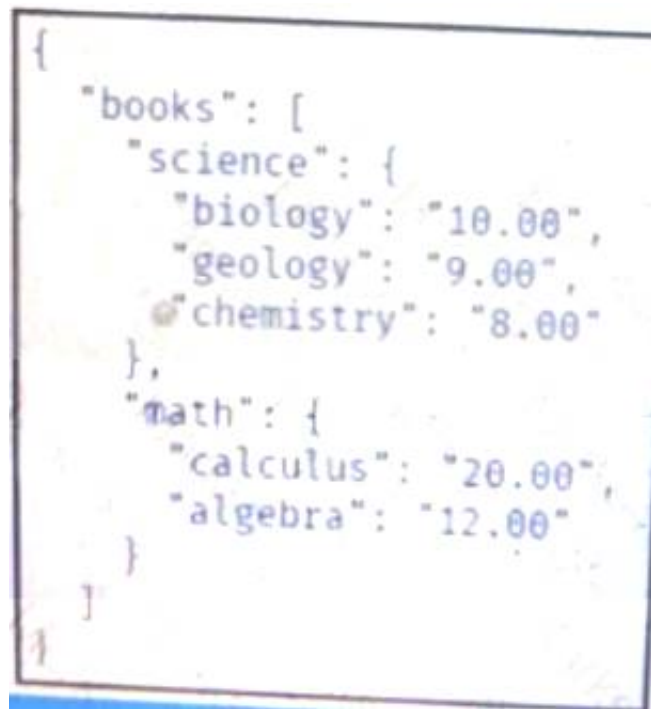
Answer: D

NEW QUESTION 65

Refer to the exhibit.

```
{
  "books": [
    "science", {
      "biology": "10.00",
      "geology": "9.00",
      "chemistry": "8.00"
    },
    "math", {
      "calculus": "20.00",
      "algebra": "12.00"
    }
  ]
}
```

Drag and drop the variables from the left onto the item numbers on the right that match the missing assignments in the exhibit.



- A. Mastered
- B. Not Mastered

Answer: A

Explanation:
1 – A, 2 – C, 3 – B

NEW QUESTION 70

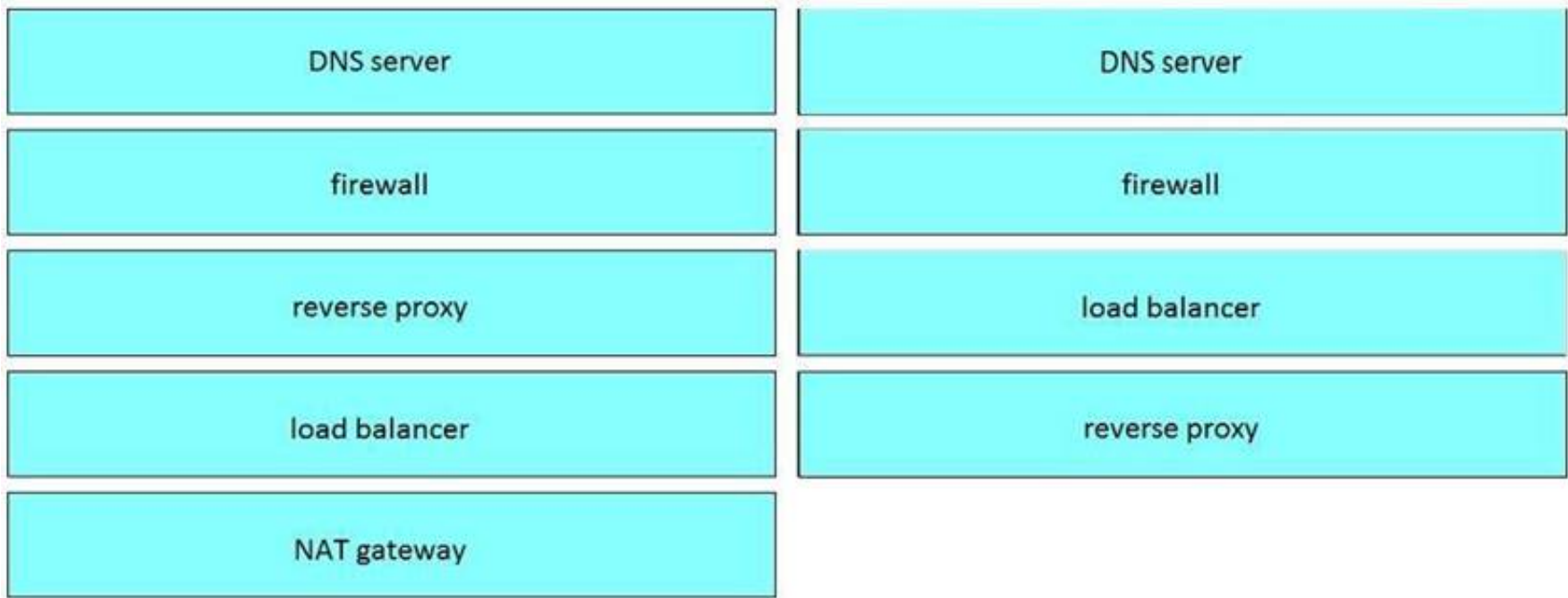
Which mechanism is used to consume a RESTful API design when large amounts of data are returned?

- A. Data sets
- B. Scrolling
- C. Blobs
- D. Pagination

Answer: D

NEW QUESTION 75

Refer to the exhibit.



Which two statements about the network diagram are true? (Choose two.)

- A. PC-A and PC-B are in the same subnet.
- B. One of the routers has two connected serial interfaces.
- C. The subnet of PC-C can contain 256 hosts.
- D. R1 and R3 are in the same subnet.
- E. The subnet address of PC-B has 18 bits dedicated to the network portion.

Answer: BC

NEW QUESTION 78

Which platform is run directly using a hypervisor?

- A. Virtual
- B. Bare metal systems
- C. Containers
- D. Applications

Answer: C

NEW QUESTION 80

Which detail is included in a routing table?

- A. IP protocol
- B. Broadcast address
- C. TCP or UDP port number
- D. Destination next hop or outgoing interface

Answer: D

NEW QUESTION 82

On which network plane is routing protocol traffic handled?

- A. data plane
- B. management plane
- C. authentication plane
- D. control plane

Answer: D

NEW QUESTION 83

Which two statements about JSON and XML are true? (Choose two.)

- A. JSON objects are collection of key value pairs.
- B. The syntax of JSON contains tags, elements, and attributes.
- C. JSON arrays are an unordered set of key value pairs.
- D. The syntax of XML contains tags, elements, and attributes.
- E. XML objects are collections of key-value pairs.

Answer: AD

NEW QUESTION 88

What are two advantages of the Model-view-controller software design pattern? (Choose two.)

- A. simplifies network automation
- B. allows for multiple views of the same model
- C. makes code easier to deploy using CI/CD pipelines
- D. reduces need for error handling
- E. separates responsibilities of the code, which makes future modifications easier

Answer: BE

NEW QUESTION 89

Which two statements describe the traits of an asynchronous API call? (Choose two.)

- A. The order in which API calls return can be guaranteed
- B. A call to an API does not block the code, but rather it allows application processing to continue
- C. The end user can experience latency or performance lag while waiting for the API call to return
- D. Code execution blocks or waits for the call to an API to return.
- E. A callback function typically is used to process the response from an API call

Answer: BE

NEW QUESTION 92

A company has written a script that creates a log bundle from the Cisco DNA Center every day. The script runs without error and the bundles are produced. However, when the script is run during business hours, report poor voice quality of phones calls. What explains this behavior?

- A. The application is running in the Voice VLAN and causes delays and jitter in the subnet.
- B. The speed and duplex settings in Cisco DNA Center are set incorrectly, which causes the transfer to be too slow.
- C. The script is written in a low-level programming language where there is no memory safety
- D. This causes a buffer overflow and disruption on the network.
- E. Generating the logs causes the CPU on the network controller to spike, which causes delays in forwarding the voice IP packets.

Answer: D

NEW QUESTION 94

Fill in the blanks to complete the statement.

Given a username of “devnet” And a password “Cisco123”, applications must create a base64 encoding of the string “_____” when sending HTTP requests to an API that uses _____ authentication.

Cisco DNA Center provides the capability to send an HTTP request to the API endpoint and receive the network list in format.

- A. Mastered
- B. Not Mastered

Answer: A

Explanation:

```
docker run -p 3000:5000 f877cbf2ff33
```

NEW QUESTION 97

Which statement describes the benefit of using functions in programming?

- A. Functions allow problems to be split into simpler, smaller groups, and reduce code repetition, which makes the code easier to read.
- B. Functions ensure that a developer understands the inner logic contained before using them as part of a script or application.
- C. Functions create the implementation of secret and encrypted algorithms.
- D. Functions store mutable values within a script 01 application.

Answer: A

NEW QUESTION 98

What is the purpose of the Cisco VIRL software tool?

- A. To verify configurations against compliance standards
- B. To simulate and model networks
- C. To automate API workflows
- D. To test performance of an application

Answer: B

NEW QUESTION 101

.....

Relate Links

100% Pass Your 200-901 Exam with ExamBible Prep Materials

<https://www.exambible.com/200-901-exam/>

Contact us

We are proud of our high-quality customer service, which serves you around the clock 24/7.

Viste - <https://www.exambible.com/>