



The-Open-Group

Exam Questions OGEA-103

TOGAF Enterprise Architecture Combined Part 1 and Part 2 Exam

About ExamBible

[Your Partner of IT Exam](#)

Found in 1998

ExamBible is a company specialized on providing high quality IT exam practice study materials, especially Cisco CCNA, CCDA, CCNP, CCIE, Checkpoint CCSE, CompTIA A+, Network+ certification practice exams and so on. We guarantee that the candidates will not only pass any IT exam at the first attempt but also get profound understanding about the certificates they have got. There are so many alike companies in this industry, however, ExamBible has its unique advantages that other companies could not achieve.

Our Advances

* 99.9% Uptime

All examinations will be up to date.

* 24/7 Quality Support

We will provide service round the clock.

* 100% Pass Rate

Our guarantee that you will pass the exam.

* Unique Gurantee

If you do not pass the exam at the first time, we will not only arrange FULL REFUND for you, but also provide you another exam of your claim, ABSOLUTELY FREE!

NEW QUESTION 1

- (Topic 1)

What provides context for architecture work, by describing the needs and ways of working employed by the enterprise?

- A. Architecture Contracts
- B. Business principles business goals, and business drivers
- C. Strategy and vision
- D. Stakeholder needs

Answer: B

Explanation:

Business principles business goals, and business drivers provide context for architecture work, by describing the needs and ways of working employed by the enterprise. They define what the enterprise wants to achieve, how it wants to operate, and what factors influence its decisions and actions. Reference: The TOGAF® Standard | The Open Group Website, Section 3.2 Preliminary Phase.

NEW QUESTION 2

- (Topic 1)

Consider the following ADM phases objectives.

	Objective
1	Ensure that the business value and cost of work packages and Transition Architectures is understood by key stakeholders
2	Ensure conformance with the Target Architecture by implementation projects
3	Ensure that the architecture development cycle is maintained
4	Ensure that the Architecture Governance Framework is executed

Which phase does each objective match?

- A. 1F-2G-3G-4H
- B. 1H-2F-3F-4G
- C. 1F-2G-3H-4H
- D. 1G-2H-3H-4F

Answer: B

Explanation:

? According to the TOGAF Standard, Version 9.2, the ADM phases and their objectives are as follows1:

? Based on the above definitions, we can match each objective with the corresponding phase as follows:

References:

? 1: The TOGAF Standard, Version 9.2, Chapter 5: Architecture Development Method (ADM)

? 2: The TOGAF Standard, Version 9.2, Chapter 21: Architecture Change Management

? 3: The TOGAF Standard, Version 9.2, Chapter 20: Migration Planning

? 4: The TOGAF Standard, Version 9.2, Chapter 19: Implementation Governance

NEW QUESTION 3

- (Topic 1)

Consider the following statements

1 A whole corporation or a division of a corporation

2 A government agency or a single government department

3 Partnerships and alliances of businesses working together such as a consortium or supply chain

What are those examples of according to the TOGAF Standard?

- A. Enterprises
- B. Business Units
- C. Organizations
- D. Architectures Scopes

Answer: A

Explanation:

Enterprises are examples of the scope of an architecture according to the TOGAF Standard. An enterprise is defined as any collection of organizations that has a common set of goals and/or a single bottom line. Enterprises can be whole corporations or divisions of a corporation, government agencies or single government departments, partnerships and alliances of businesses working together, etc. Reference: The TOGAF® Standard | The Open Group Website, Section 2.1 Core Concepts.

NEW QUESTION 4

- (Topic 1)

Which of the following are interests important to the stakeholders in a system?

- A. Requirements
- B. Principles
- C. Concerns
- D. Architecture views

Answer: C

Explanation:

Concerns are interests important to the stakeholders in a system. They are used to identify and classify the system's stakeholders and to guide the selection of viewpoints for the architecture description. Reference: The TOGAF® Standard | The Open Group Website, Section 3.2.1 Architecture Viewpoints

NEW QUESTION 5

- (Topic 1)

Consider the following statement.

Projects may cycle between ADM phases, in planned cycles covering multiple phases. What does it illustrate?

- A. Requirements management
- B. Iteration
- C. Implementation governance
- D. Enterprise Architecture

Answer: B

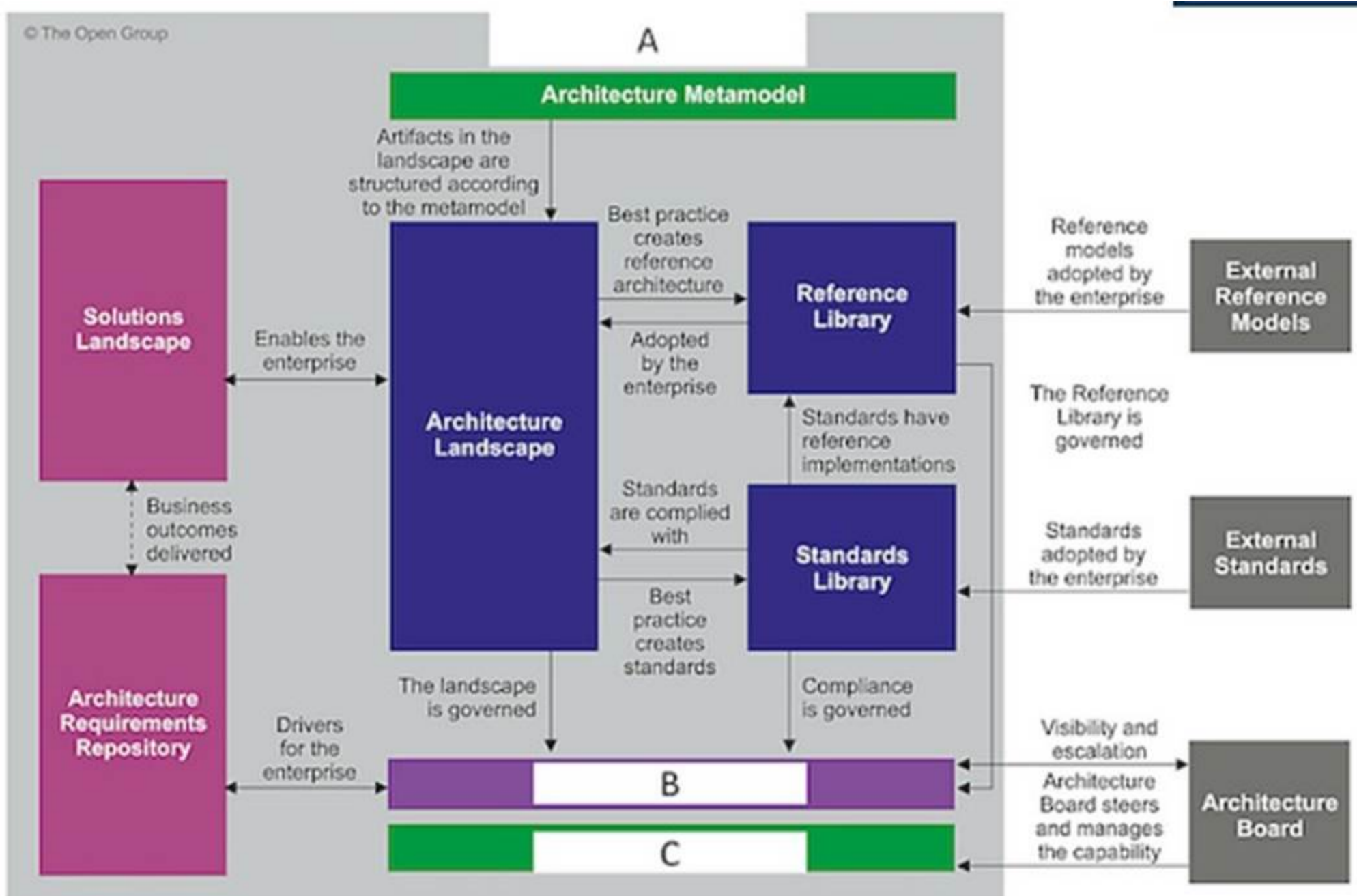
Explanation:

The statement "Projects may cycle between ADM phases, in planned cycles covering multiple phases" illustrates the concept of iteration, which is the process of repeating the ADM phases or steps within a phase to refine the architecture outputs and address the changing requirements and stakeholder concerns. Iteration can occur at different levels of granularity and scope, such as within a single phase, across multiple phases, or across the entire ADM cycle. Iteration can also be applied to different architecture domains, such as business, data, application, and technology. Iteration is a key feature of the ADM that enables the development of architectures that are fit for purpose, adaptable, and responsive to change. References: : The TOGAF Standard, Version 9.2, Part III: ADM Guidelines and Techniques, Chapter 24: Applying Iteration to the ADM

NEW QUESTION 6

- (Topic 1)

Exhibit:



Consider the illustration. What are the items labelled A, B, and C?

- A. A-Enterprise Repository, B-Governance Repository, C-Board Repository
- B. A-Architecture Repository, B-Governance Repository, C-Architecture Capability
- C. A-Architecture Repository, B-Governing Board, C-Enterprise Capability
- D. A-Enterprise Repository, B-Board repository, C-Enterprise Capability

Answer: C

Explanation:

? A-Architecture Repository: This is a part of the Architecture Metamodel that contains artifacts structured according to the metamodel. It includes the Architecture Landscape which is adopted by the enterprise and governed by certain standards and practices.

? B-Governing Board: The Governing Board ensures visibility and escalation, meaning it oversees and manages the capability of the architecture landscape. It plays a crucial role in governance.

? C-Enterprise Capability: This refers to how well an enterprise can execute its mission, meet business objectives or satisfy its stakeholders?? needs and expectations. It??s influenced by both internal factors (like resources, processes) and external ones (like market trends).

References: TOGAF Version 9.1, Chapter 34: 1

NEW QUESTION 7

- (Topic 1)

Which ADM phase focuses on defining the problem to be solved, identifying the stakeholders, their concerns, and requirements?

- A. Phase
- B. Preliminary Phase
- C. Phase
- D. Phase A

Answer: D

Explanation:

Phase A: Architecture Vision is the first phase of the Architecture Development Method (ADM) cycle, which is the core of the TOGAF standard. The main purpose of this phase is to define the scope and approach of the architecture development, and to create the Architecture Vision, which is a high-level description of the desired outcomes and benefits of the proposed architecture. To achieve this purpose, this phase focuses on defining the problem to be solved, identifying the stakeholders, their concerns, and requirements, and establishing the business goals and drivers that motivate the architecture work. This phase also involves obtaining the approval and commitment of the sponsors and other key stakeholders, and initiating the Architecture Governance process. References: : The TOGAF Standard, Version 9.2, Part II: Architecture Development Method (ADM), Chapter 5: Introduction to the ADM : The TOGAF Standard, Version 9.2, Part II: Architecture Development Method (ADM), Chapter 18: Phase A: Architecture Vision : The TOGAF Standard, Version 9.2, Part II: Architecture Development Method (ADM), Chapter 18.3: Inputs : The TOGAF Standard, Version 9.2, Part II: Architecture Development Method (ADM), Chapter 18.4: Steps

NEW QUESTION 8

- (Topic 1)

Complete the following sentence. In the ADM documents which are under development and have not undergone any formal review and approval process are _____.

- A. Called ???draft???
- B. Invalid
- C. In between phases
- D. Known as ???Version 0.1???

Answer: A

Explanation:

In the ADM documents which are under development and have not undergone any formal review and approval process are called ??draft??. This indicates that they are subject to change and refinement as the architecture development progresses.

Reference: The TOGAF® Standard | The Open Group Website, Section 4.2.5 Architecture Deliverables.

NEW QUESTION 9

- (Topic 1)

Complete the following sentence. In the ADM, documents which are under development and have not undergone any formal review and approval process are called_____ Documents which have been reviewed and approved are called _____

- A. "draft"- "finalized"
- B. "draft" - "approved"
- C. "concept" - "deliverable"
- D. "Version 0.1" - "Version 1.0"

Answer: B

Explanation:

According to the TOGAF Standard, 10th Edition, documents which are under development and have not undergone any formal review and approval process are called draft documents, while documents which have been reviewed and approved are called approved documents 1. Draft documents are typically marked with a version number of 0.x, indicating that they are incomplete or provisional. Approved documents are typically marked with a version number of 1.0 or higher, indicating that they have been finalized and authorized. The other options are not correct, as they are not the terms used by the TOGAF Standard to distinguish between documents under development and documents that have been reviewed and approved. The terms ??finalized??. ??concept??. ??deliverable??. and ??Version 0.1?? and ??Version 1.0?? are not specific to the TOGAF Standard, and they may have different meanings or interpretations in different contexts. References: 1: TOGAF Standard, 10th Edition, Part II: Architecture Development Method, Chapter 7: Applying Iteration to the ADM, Section 7.2.3 Document Categorization.

NEW QUESTION 10

- (Topic 1)

Consider the following ADM phases objectives.

	Objective
1	Develop the Target Data Architecture that enables the Business Architecture and the Architecture Vision
2	Develop the Target Business Architecture that describes how the enterprise needs to operate to achieve the business goals
3	Develop a high-level aspirational vision of the capabilities and business value to be delivered as a result of the proposed Enterprise Architecture
4	Develop the Target Application Architecture that enables the Business Architecture and the Architecture Vision, in a way that addresses the Statement of Architecture Work and stakeholder concerns

Which phase does each objective match?

- A. 1C-2B-3A-4C
- B. 1A-2B-3C-4D
- C. 1B-2D-3A-4C
- D. 1C-2D-3B-4A

Answer: A

Explanation:

? The objectives listed in the question correspond to the objectives of different phases of the TOGAF ADM (Architecture Development Method), which is a method for developing and managing an enterprise architecture¹.

? The ADM consists of nine phases, each with a specific purpose and output. The phases are¹:

? Based on the above definitions, we can match each objective with the corresponding phase as follows:

References:

? 1: The TOGAF Standard, Version 9.2, Chapter 5: Architecture Development Method (ADM)

? 2: The TOGAF Standard, Version 9.2, Chapter 9: Phase C: Information Systems Architectures

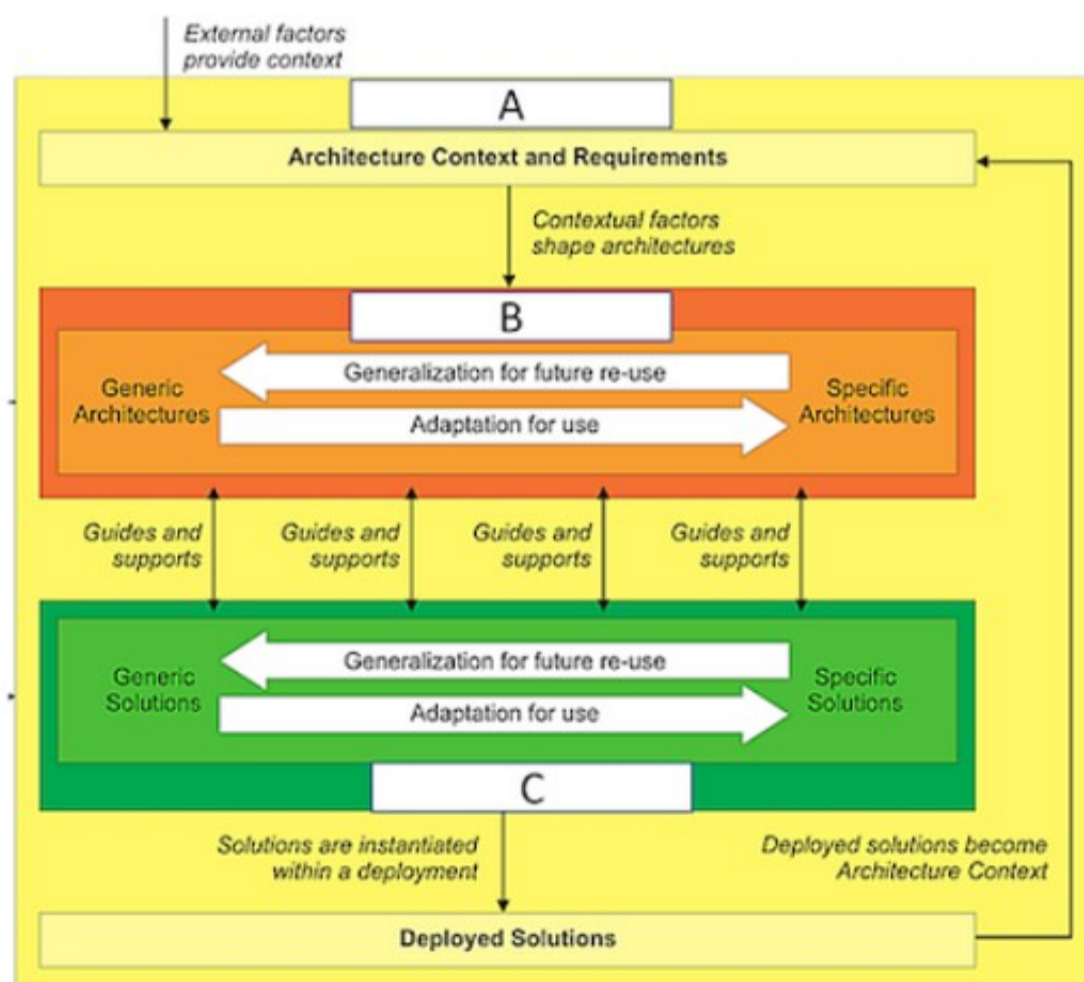
? 3: The TOGAF Standard, Version 9.2, Chapter 8: Phase B: Business Architecture

? 4: The TOGAF Standard, Version 9.2, Chapter 7: Phase A: Architecture Vision

NEW QUESTION 10

- (Topic 1)

Consider the illustration.



What are the items labelled A, B and C?

- A. A-Enterprise Continuum, B-Architecture Continuum, C-Solutions Continuum
- B. A-Enterprise Architecture, B-Architecture Building Blocks, C-Solutions Building Blocks
- C. A-Architecture Vision, B-Business Architecture, C-Information Systems Architecture

D. A-Enterprise Strategic Architecture, B-Segment Architecture, C-Solutions Architecture

Answer: A

Explanation:

The illustration shows the relationship between the Enterprise Continuum, the Architecture Continuum, and the Solutions Continuum, which are key concepts in the TOGAF framework. The Enterprise Continuum is a view of the Architecture Repository that shows how generic foundation architectures can be leveraged and specialized to support the requirements of an individual organization. The Architecture Continuum specifies a structured classification for architectural artifacts, such as models, patterns, and descriptions, that can be reused and adapted across different domains and levels of abstraction. The Solutions Continuum identifies implemented solutions that support various stages of business and IT capability evolution, such as common systems, industry solutions, and organization-specific solutions. The illustration also shows how the architecture context and requirements are influenced by external factors, such as business drivers, stakeholders, and standards, and how they shape the generic and specific architectures and solutions. The illustration also shows how the deployed solutions become part of the architecture context for future iterations of the architecture development cycle. References:

- TOGAF Standard, 10th Edition, Part II: Architecture Development Method, Chapter 6: Architecture Repository, Section 6.2 Enterprise Continuum.
- TOGAF Standard, 10th Edition, Part IV: Architecture Content Framework, Chapter 35: Enterprise Continuum and Tools, Section 35.1 Introduction.

NEW QUESTION 14

- (Topic 1)

What is the purpose of the Preliminary Phase?

- A. Developing an Enterprise Architecture Capability.
- B. Describing the target architecture.
- C. Defining the Enterprise Strategy.
- D. Identifying the stakeholders and their requirements.

Answer: A

Explanation:

An Enterprise Architecture Capability is the ability of the organization to perform effective and efficient architecture work, including the definition, governance, and management of its architectures². The Preliminary Phase involves the following activities¹:

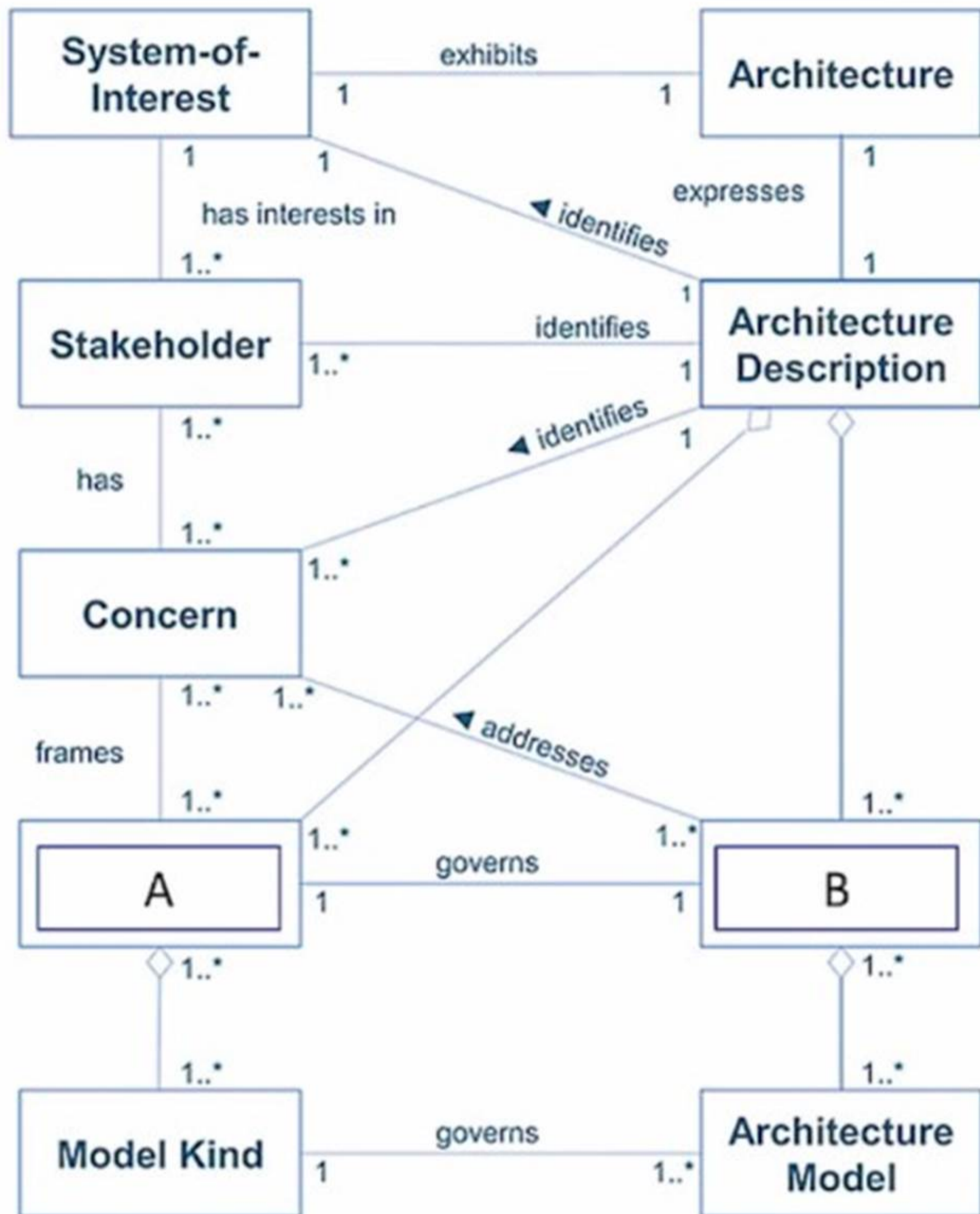
- Reviewing the organizational context, scope, and drivers for conducting Enterprise Architecture
- Establishing the Architecture Capability desired by the organization, including the maturity level, roles, responsibilities, processes, and tools
- Defining and establishing the Organizational Model for Enterprise Architecture, which describes how the architecture function is organized and integrated within the enterprise
- Defining and establishing the Architecture Governance framework, which provides the mechanisms for ensuring the quality, consistency, and compliance of the architecture work
- Selecting and implementing the tools that support the Architecture Capability, such as repositories, modeling tools, and communication tools
- Defining the Architecture Principles that will guide and constrain the architecture work, based on the business principles, goals, and drivers of the organization
- Defining the Organization-Specific Architecture Framework, which is an adaptation of the generic TOGAF ADM to suit the specific requirements, standards, and practices of the organization

The Preliminary Phase is essential for preparing the organization for the successful development and implementation of its architectures, as well as for ensuring the alignment of the architecture work with the business strategy and objectives¹.

References: 1: Preliminary Phase 2: Enterprise Architecture Capability

NEW QUESTION 19

- (Topic 1)



Consider the image showing basic architectural concepts. What are items A and B?

- A. A-Architecture Viewpoint, B-Architecture View
- B. A-Architecture Board, B-Architecture Capability
- C. A-Candidate Architecture, B-Trade-off
- D. A-Requiremen
- E. B-Candidate Architecture

Answer: A

Explanation:

? The image shows a diagram that illustrates the basic concepts of architecture description as defined by the ISO/IEC/IEEE 42010:2011 standard¹, which is also adopted by the TOGAF standard².

? According to the ISO/IEC/IEEE 42010:2011 standard, an architecture description is a work product used to express an architecture, and it consists of one or more architecture views¹.

? An architecture view is a representation of a system from the perspective of a related set of concerns, and it conforms to an architecture viewpoint¹.

? An architecture viewpoint is a specification of the conventions for constructing and using an architecture view to address specific stakeholder concerns¹.

? Therefore, the correct answer is option A, which identifies the items labeled as ??A?? and ??B?? in the image as an architecture viewpoint and an architecture view, respectively. References:

? 1: ISO/IEC/IEEE 42010:2011 - Systems and software engineering — Architecture description¹

? 2: TOGAF Standard, Version 9.2 - Part IV: Architecture Content Framework -31. Architectural Artifacts²

NEW QUESTION 23

- (Topic 1)

Complete the sentence The purpose of Enterprise Architecture is to _____.

- A. take major improvement decisions
- B. control the bigger changes
- C. guide effective change
- D. govern the stakeholders

Answer: C

Explanation:

The purpose of Enterprise Architecture is to guide effective change by providing a coherent and consistent view of the enterprise??s current and future state, as well as the roadmap and principles for achieving it. Enterprise Architecture helps to align business and IT strategies, optimize resources and investments, reduce complexity and risks, enhance agility and innovation, and deliver value to stakeholders. Reference: The TOGAF® Standard | The Open Group Website, Section 1.3 Executive Overview.

NEW QUESTION 24

- (Topic 1)

Consider the following ADM phases objectives.

	Objective
1	Finalize the Architecture Roadmap and the supporting Implementation and Migration Plan
2	Ensure that the business value and cost of work packages and Transition Architectures is understood by key stakeholders
3	Define the overall Solution Building Blocks (SBBs) to finalize the Target Architecture based on the ABBs
4	Ensure conformance with the Target Architecture by implementation projects

Which phase does each objective match?

- A. 1F-2G-3F-4F
- B. 1E-2F-3E-4G
- C. 1G-2E-3F-4E
- D. 1F-2F-3E-4G

Answer: B

Explanation:

1E: To identify delivery vehicles (projects programs portfolios) that will deliver the Target Architecture 2F: To confirm readiness and ability to undergo change 3E: To determine whether an incremental approach is required and if so identify Transition Architectures that will deliver continuous business value 4G: To perform appropriate governance functions while the solution is being implemented

Reference: The TOGAF® Standard | The Open Group Website, Section 3.2 ADM Phases.

NEW QUESTION 25

- (Topic 1)

What is used to structure architectural information in an orderly way so that it can be processed to meet stakeholder needs?

- A. A Stakeholder Map
- B. An Architecture Framework
- C. Content Metamodel
- D. An EA Library

Answer: C

Explanation:

? A content metamodel is a formal structure that defines the types of entities and relationships that are used to capture, store, filter, query, and represent architectural information in a way that supports consistency, completeness, and traceability¹².

? A stakeholder map is a tool that identifies and analyzes the key stakeholders and their interests, influence, and expectations in relation to the architecture³. It is not used to structure architectural information, but rather to understand the stakeholder needs and concerns.

? An architecture framework is a set of principles, guidelines, standards, and tools that provide a common structure and methodology for developing architectures⁴. It is not used to structure architectural information, but rather to guide the architecture development process and ensure alignment with the

business strategy and objectives.

? An EA library is a repository that stores and manages the architecture artifacts, deliverables, and other relevant information produced and consumed during the architecture development and governance. It is not used to structure architectural information, but rather to provide access, security, and version control for the architecture content.

References: 1: The TOGAF Standard, Version 9.2 - Content Metamodel 2: TOGAF 9.2 Content Metamodel Framework - A Quick Guide - KnowledgeHut 3: The TOGAF Standard, Version 9.2 - Stakeholder Management 4: The TOGAF Standard, Version 9.2 - Architecture Framework : The TOGAF Standard, Version 9.2 - Architecture Repository

NEW QUESTION 30

- (Topic 1)

Which of the following best describes the class of information known as the Reference Library within the Architecture Repository?

- A. Guidelines and templates used to create new architectures
- B. Specifications to which architectures must conform
- C. A record of the governance activity across the enterprise
- D. Processes to support governance of the Architecture Repository

Answer: A

Explanation:

The class of information known as the Reference Library within the Architecture Repository contains guidelines and templates used to create new architectures. The Reference Library provides a set of resources that can be leveraged or customized for specific architecture development purposes. It includes generic building blocks, patterns, models, standards, frameworks, methods, techniques, best practices, etc. Reference: The TOGAF® Standard | The Open Group Website, Section 2.4 Architecture Repository.

NEW QUESTION 35

- (Topic 1)

Complete the sentence The Architecture Landscape is divided into levels known as _____.

- A. Gaps Plateaus, and Target Architectures
- B. Baselin
- C. Transition and To Be Architectures
- D. Segment Strategic and Capability Architectures
- E. Transitional Complete and incremental Architectures

Answer: C

Explanation:

The Architecture Landscape is divided into levels known as Segment Strategic and Capability Architectures. These levels correspond to different scopes and purposes of architectures within an enterprise. Segment Architectures are architectures that address specific business units, functions, or processes within an enterprise. Strategic Architectures are architectures that provide a high-level view of the enterprise??s vision, goals, and direction. Capability Architectures are architectures that address specific business capabilities or services that span multiple segments or domains. Reference: The TOGAF® Standard | The Open Group Website, Section 2.4 Architecture Repository.

NEW QUESTION 37

- (Topic 1)

Which one of the following classes of information within the Architecture Repository would typically contain a list of the applications in use within the enterprise?

- A. Reference Library
- B. Architecture Metamodel
- C. Architecture Landscape
- D. Governance Log

Answer: C

Explanation:

The Architecture Landscape is a class of information within the Architecture Repository that shows an architectural view of the building blocks that are in use within the organization today (the Baseline Architecture), as well as those that are planned for the future (the Target Architecture). The Architecture Landscape typically contains a list of the applications in use within the enterprise, along with their relationships and dependencies, as well as other relevant architectural information. The Architecture Landscape helps to identify opportunities for re-use, consolidation, or retirement of existing applications, as well as gaps or overlaps in the current or future architecture. References: : The TOGAF Standard, Version 9.2, Part IV: Architecture Content Framework, Chapter 34: Architecture Landscape : The TOGAF Standard, Version 9.2, Part VI: Architecture Capability Framework, Chapter 47: Architecture Repository

NEW QUESTION 39

- (Topic 1)

Consider the following statement:

Separate projects may operate their own ADM cycles concurrently, with relationships between the different projects

What does it illustrate?

- A. Implementation governance
- B. Enterprise Architecture
- C. Iteration
- D. Requirements management

Answer: C

Explanation:

The statement illustrates iteration and the ADM. Iteration is the technique of repeating a process or a phase with the aim of improving or refining the outcome. Iteration allows for feedback loops and adaptations at any point in the architecture development and transition process. Separate projects may operate their own

ADM cycles concurrently, with relationships between the different projects, to address different aspects or levels of the architecture in an iterative manner.
Reference: The TOGAF® Standard | The Open Group Website, Section 3.1 Introduction to the ADM.

NEW QUESTION 43

- (Topic 1)

Consider the following statement.

According to the TOGAF standard, a governed approach of a particular deliverable will ensure adherence to the principles, standards, and requirements of the existing or developing architectures.

Which deliverable does this refer to?

- A. The Architecture Vision
- B. The Statement of Architecture Work
- C. An Architecture Contract
- D. The Architecture Definition Document

Answer: C

Explanation:

According to the TOGAF Standard, 10th Edition, an architecture contract is ??a formal agreement between a service provider and a service consumer that defines the mutual commitments and expectations for the delivery of an architecture?? 1. An architecture contract is a governed approach of a particular deliverable that will ensure adherence to the principles, standards, and requirements of the existing or developing architectures, as it specifies the roles, responsibilities, deliverables, quality criteria, and acceptance criteria for the architecture work 1. The other options are not correct, as they are not governed approaches of a particular deliverable, but rather different types of deliverables within the architecture development process. An architecture vision is ??a high-level, aspirational view of the target architecture?? 1. A statement of architecture work is ??a document that defines the scope and approach that will be used to complete an architecture project?? 1. An architecture definition document is ??a document that describes the baseline and target architectures for one or more domains?? 1. References: 1: TOGAF Standard, 10th Edition, Part I: Introduction, Chapter 3: Definitions.

NEW QUESTION 45

- (Topic 1)

Consider the following statement:

According to the TOGAF Standard a governed approach of a particular deliverable will ensure a system of continuous monitoring to check integrity changes decision-making and audit of all architecture-related activities

Which deliverable is being referred to?

- A. An Architecture Contract
- B. The Architecture Definition Document
- C. The Architecture Vision
- D. The Statement of Architecture Work

Answer: A

Explanation:

An Architecture Contract is a deliverable that specifies the responsibilities and obligations of the parties involved in the implementation and governance of an architecture. It ensures a system of continuous monitoring to check integrity changes decision-making and audit of all architecture-related activities. Reference: The TOGAF® Standard | The Open Group Website, Section 3.3.4 Architecture Contracts.

NEW QUESTION 47

- (Topic 1)

What is presented as ??striking a balance between positive and negative outcomes resulting from the realization of either opportunities or threats?

- A. Agile development
- B. Architecture Security
- C. Transition Management
- D. Risk Management

Answer: D

Explanation:

Risk Management is the process of identifying, assessing, and responding to risks that may affect the achievement of the enterprise??s objectives. Risk Management involves balancing positive and negative outcomes resulting from the realization of either opportunities or threats. Reference: The TOGAF® Standard | The Open Group Website, Section 3.3.3 Risk Management.

NEW QUESTION 48

- (Topic 1)

Which of the following is included as part of Architecture Governance1?

- A. Ensuring compliance with internal and external standards and regulatory obligations
- B. Creating and maintaining the Statement of Architecture Work though out the ADM cycle
- C. Managing Stakeholders and their requirements
- D. Interacting with the CxO level on Enterprise Architecture

Answer: A

Explanation:

Ensuring compliance with internal and external standards and regulatory obligations is one of the activities included as part of Architecture Governance. Architecture Governance is the practice and orientation by which enterprise architectures and other architectures are managed and controlled at an enterprise-wide level. It involves establishing processes, roles, responsibilities, policies, and standards to ensure that architectures are aligned with the enterprise??s strategy and objectives, and meet the quality and performance requirements. Reference: The TOGAF® Standard | The Open Group Website, Section 3.3.6 Architecture Governance.

NEW QUESTION 51

- (Topic 1)

Which of the following is a responsibility of an Architecture Board?

- A. Determining the scope of an architecture compliance review
- B. Allocating resources for architecture projects
- C. Conducting assessments of the maturity level of architecture discipline within the organization
- D. Achieving consistency between sub-architectures

Answer: D

Explanation:

One of the key responsibilities of an Architecture Board within the context of TOGAF is to achieve consistency between sub-architectures. This board is typically responsible for overseeing the development and maintenance of the enterprise architecture, ensuring that it aligns with the organization's overall strategy and objectives. They play a critical role in ensuring that all sub-architectures (like Business Architecture, Data Architecture, Application Architecture, and Technology Architecture) work together cohesively and support the overall enterprise architecture vision and strategy.

NEW QUESTION 56

- (Topic 1)

Which of the following does the TOGAF standard describe as a package of functionality defined to meet business needs across an organization?

- A. An application
- B. A deliverable
- C. A solution architecture
- D. A building block

Answer: D

NEW QUESTION 60

- (Topic 1)

According to the TOGAF standard, what term describes an individual with an interest in a system?

- A. stakeholder
- B. consumer
- C. lead architect
- D. sponsor

Answer: A

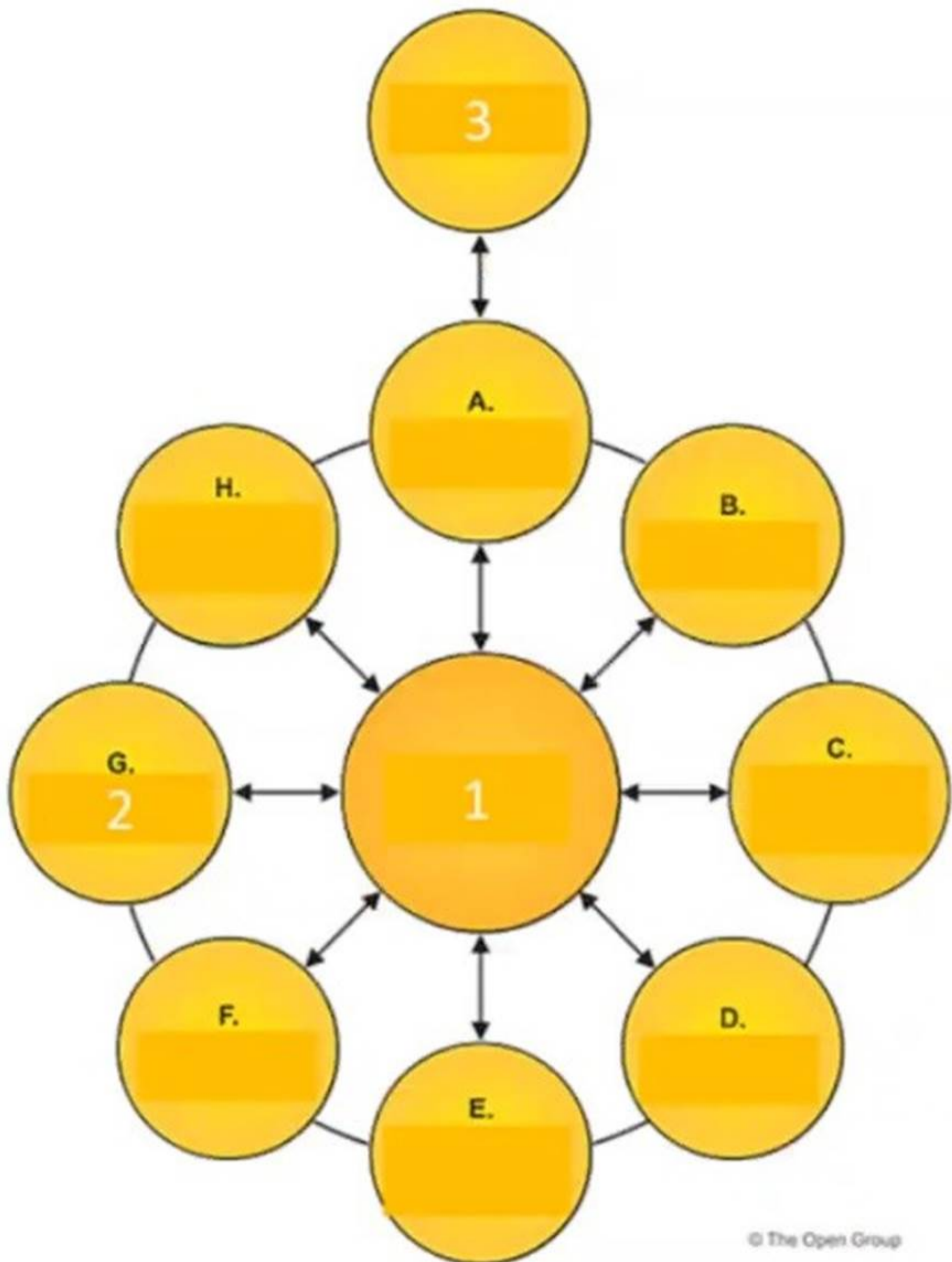
Explanation:

According to the TOGAF Standard, 10th Edition, a stakeholder is ??an individual with an interest in a system?? 1. A stakeholder can be anyone who is affected by the system, or who can influence or be influenced by the system. Stakeholders can have different roles, perspectives, and concerns regarding the system, and they can be internal or external to the organization. Stakeholder management is a technique that helps to identify, analyze, and engage the stakeholders of an architecture project, and to address their needs and expectations 2. The other options are not correct, as they are not the term used by the TOGAF Standard to describe an individual with an interest in a system. A consumer is ??an individual or group that uses a product or service?? 1. A lead architect is ??an individual who is responsible for leading the development of an architecture?? 1. A sponsor is ??an individual who provides funding and support for an architecture project?? 1. References: 1: TOGAF Standard, 10th Edition, Part I: Introduction, Chapter 3: Definitions. 2: TOGAF Standard, 10th Edition, Part III: ADM Guidelines and Techniques, Chapter 24: Stakeholder Management.

NEW QUESTION 63

- (Topic 1)

Exhibit



© The Open Group

Consider the illustration showing an architecture development cycle Which description matches the phase of the ADM labeled as item 1?

- A. Conducts implementation planning for the architecture defined in previous phases
- B. Provides architectural oversight for the implementation
- C. Operates the process of managing architecture requirements
- D. Establishes procedures for managing change to the new architecture

Answer: C

Explanation:

? The illustration shows an architecture development cycle based on the TOGAF ADM (Architecture Development Method), which is a method for developing and

managing an enterprise architecture1.

? The ADM consists of nine phases, each with a specific purpose and output. The phases are1:

? In addition to these phases, there is a central process called Requirements Management, which is labeled as item 1 in the illustration. This process operates throughout the ADM cycle, and its purpose is to manage the architecture requirements throughout the architecture development, ensuring that they are aligned with the business requirements and the stakeholder concerns2.

? Therefore, the description that matches the phase of the ADM labeled as item 1 is C. Operates the process of managing architecture requirements. References:

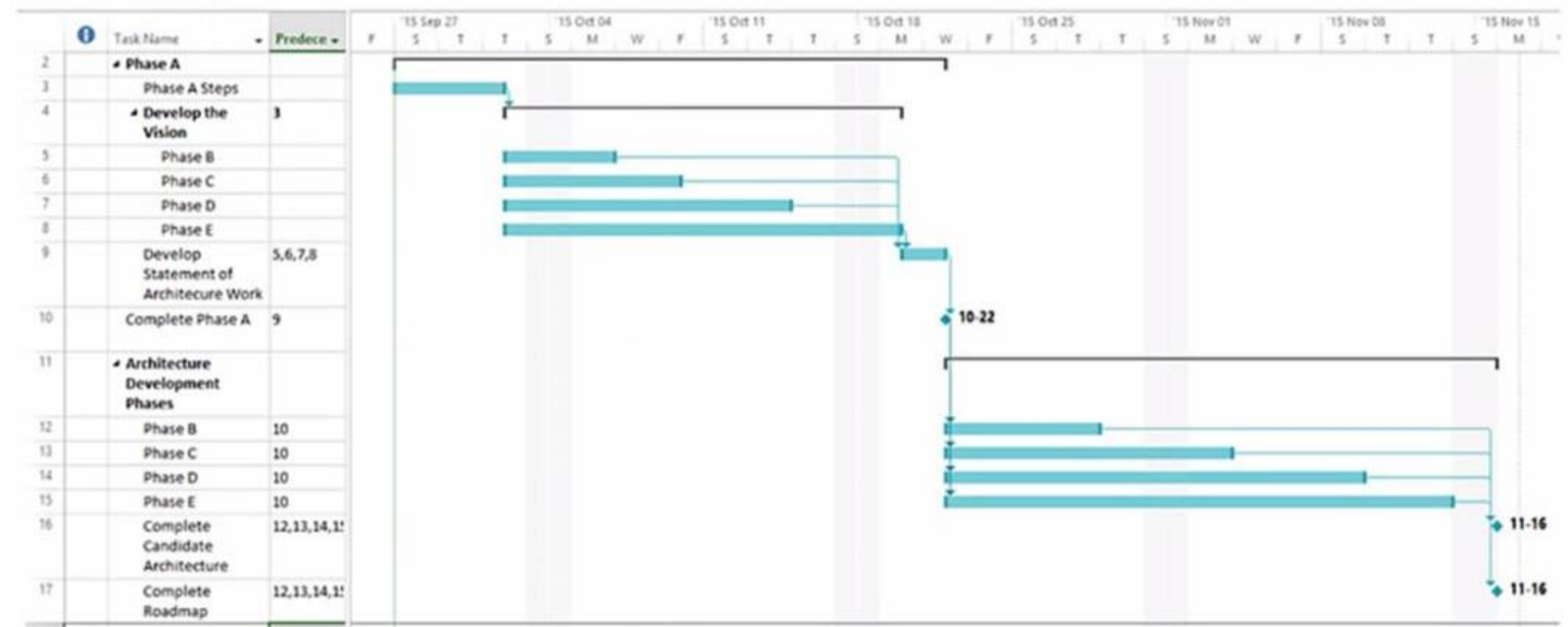
? 1: The TOGAF Standard, Version 9.2, Chapter 5: Architecture Development Method (ADM)

? 2: The TOGAF Standard, Version 9.2, Chapter 17: Requirements Management

NEW QUESTION 68

- (Topic 1)

Consider the following chart:



Which important concept for Enterprise Architecture Practitioners does it illustrate?

- A. Enterprise Architects must use Gantt charts to communicate with Stakeholders.
- B. An Enterprise Architecture must be developed in phases with a limited fixed duration.
- C. ADM phases must be run in a sequenced approach to produce the Architecture.
- D. ADM phases must be run simultaneously until the relevant information has been produced.

Answer: C

Explanation:

The chart shown is a Gantt chart, which is commonly used for project management to illustrate a project schedule. In the context of TOGAF (The Open Group Architecture Framework), which is a framework for enterprise architecture, this Gantt chart is demonstrating the sequenced approach to the Architecture Development Method (ADM). The ADM is the core process of TOGAF which provides a tested and repeatable process for developing architectures. The ADM is described as being iterative, over the whole process, between phases, and within phases. For each iteration of the ADM, a fresh decision must be taken about each of the parameters (scope, granularity, time period, and architecture assets).

The ADM consists of a number of phases that have to be followed in sequence:

- ? Preliminary Phase: Framework and principles
- ? Phase A: Architecture Vision
- ? Phase B: Business Architecture
- ? Phase C: Information Systems Architectures, including Data and Application Architectures
- ? Phase D: Technology Architecture
- ? Phase E: Opportunities and Solutions
- ? Phase F: Migration Planning
- ? Phase G: Implementation Governance
- ? Phase H: Architecture Change Management
- ? Requirements Management

Each phase is dependent on the outputs of the previous phase and the Requirements Management phase runs throughout. The Gantt chart clearly shows the dependency and sequence in which these phases occur, implying that a structured approach is followed to produce the enterprise architecture.

References:

? The TOGAF Standard, Version 9.2, a standard of The Open Group

? The TOGAF documentation available at <https://publications.opengroup.org/standards/architecture> and <https://publications.opengroup.org/guides/architecture>

NEW QUESTION 72

- (Topic 1)

Complete the sentence. Actions arising from the Business Transformation Readiness Assessment technique should be incorporated in the

- A. Architecture Requirements Specification
- B. Architecture Roadmap
- C. Implementation Governance Model
- D. Implementation and Migration Plan

Answer: D

Explanation:

The Business Transformation Readiness Assessment technique is used to evaluate the readiness of the organization to undergo change and to identify the actions needed to increase the likelihood of a successful business transformation. These actions should be incorporated in the Implementation and Migration Plan, which is the detailed plan to transition from the Baseline Architecture to the Target Architecture. The Implementation and Migration Plan also includes the Transition Architectures, the Architecture Building Blocks, the Work Packages, the Implementation Governance Model, and the Architecture Contract¹²

References: 1: The TOGAF Standard, Version 9.2, Part III: ADM Guidelines and Techniques, Chapter 27: Business Transformation Readiness Assessment 2: The TOGAF Standard, Version 9.2, Part II: Architecture Development Method (ADM), Chapter 21: Phase F: Migration Planning

NEW QUESTION 76

- (Topic 1)

Complete the sentence The purpose of the Preliminary Phase is to _____.

- A. describe the target architecture
- B. define the enterprise strategy
- C. identify the stakeholders and their requirements
- D. architect an Enterprise Architecture Capability

Answer: D

Explanation:

The purpose of the Preliminary Phase is to architect an Enterprise Architecture Capability that meets the needs and expectations of the enterprise's stakeholders and supports and enables subsequent phases of architecture development and transition. This phase involves defining the scope, principles, framework, and governance for the Enterprise Architecture Capability. Reference: The TOGAF® Standard | The Open Group Website, Section 3.2 Preliminary Phase.

NEW QUESTION 77

- (Topic 1)

Which of the following describes how the Enterprise Continuum is used when developing an enterprise architecture?

- A. To identify and understand business requirements
- B. To coordinate with the other management frameworks in use
- C. To describe how an architecture addresses stakeholder concerns
- D. To classify architecture and solution assets

Answer: D

Explanation:

The Enterprise Continuum consists of two complementary concepts: the Architecture Continuum and the Solutions Continuum¹. The Architecture Continuum provides a consistent way to describe and understand the generic and reusable architecture building blocks, such as models, patterns, and standards, that can be applied and tailored to specific situations². The Solutions Continuum provides a consistent way to describe and understand the specific and implemented solution building blocks, such as products, services, and components, that realize the architecture building blocks³. The Enterprise Continuum enables the reuse and integration of architecture and solution assets across different levels of abstraction, scope, and detail, ranging from foundation architectures to organization-specific architectures¹.

The Enterprise Continuum is used when developing an enterprise architecture to support the following activities¹:

- Selecting relevant architecture and solution assets from the Architecture Repository or other sources, based on the business drivers, goals, and requirements
- Adapting and customizing the architecture and solution assets to suit the specific needs and context of the enterprise
- Defining and developing the target architecture and the architecture roadmap, based on the gaps and opportunities identified between the baseline and the target states
- Defining and developing the implementation and migration plan, based on the architecture roadmap and the solution building blocks
- Governing and managing the architecture and solution assets throughout the architecture lifecycle, ensuring their quality, consistency, and compliance

References: 1: The TOGAF Standard, Version 9.2 - Enterprise Continuum 2: The TOGAF Standard, Version 9.2 - Architecture Continuum 3: The TOGAF Standard, Version 9.2 - Solutions Continuum

NEW QUESTION 81

- (Topic 1)

The _____ ensures that a project transitioning into implementation also smoothly transitions into appropriate Architecture Governance.

- A. Migration Plan
- B. Transition Plan
- C. Implementation Governance Model
- D. Implementation Strategy

Answer: C

Explanation:

The Implementation Governance Model is a framework that defines the roles, responsibilities, processes, and standards for governing the implementation of the target architecture. It ensures that a project transitioning into implementation also smoothly transitions into appropriate Architecture Governance, which is the practice of ensuring compliance with the enterprise architecture and its principles, standards, and goals. The Implementation Governance Model is part of the Implementation and Migration Plan, which is the output of Phase F: Migration Planning of the Architecture Development Method (ADM)¹²

References: 1: The TOGAF Standard, Version 9.2, Part II: Architecture Development Method (ADM), Chapter 21: Phase F: Migration Planning 2: The TOGAF Standard, Version 9.2, Part VI: Architecture Capability Framework, Chapter 50: Architecture Governance

NEW QUESTION 82

- (Topic 1)

Which of the following best describes the purpose of the Gap Analysis technique?

- A. To govern the architecture throughout its implementation process
- B. To develop a set of general rules and guidelines for the architecture
- C. To identify items omitted from the Target Architecture
- D. To allocate resources for architecture projects

Answer: C

Explanation:

The purpose of the Gap Analysis technique is similar to the previous question, but with a focus on the Target Architecture. The technique helps to identify the items that are not included or specified in the Target Architecture, such as capabilities, services, components, standards, or technologies. These items may be essential for achieving the vision and goals of the enterprise, or for addressing the stakeholder concerns and requirements. By identifying the items omitted from the Target Architecture, the technique helps to ensure that the architecture is comprehensive, feasible, and realistic.

NEW QUESTION 87

- (Topic 1)

Which section of the TOGAF template for Architecture Principles should describe the relationship to other principles?

- A. Name
- B. Rationale
- C. Statement
- D. Implications

Answer: B

Explanation:

According to the TOGAF template for Architecture Principles, the Rationale section should describe the relationship to other principles, as well as the business benefits and the intentions of adhering to the principle. The Rationale section should use business terminology and point to the similarity of information and technology principles to the principles governing business operations. The Rationale section should also explain how the principle supports the achievement of the business objectives and key architecture drivers. References:

? Architecture Principles Template

? The TOGAF Standard, Version 9.2 - Architecture Principles

? The Open Group Exam OGEA-103 Topic 1 Question 4 Discussion

NEW QUESTION 90

- (Topic 1)

Consider the following statements:

- * 1. Each contracted party is required to act responsibly to the organization and its stakeholders.
- * 2. All decisions taken, processes used, and their implementation will not be allowed to create unfair advantage to any one particular party.
- * 3. Digital Transformation and operations will be more effective and efficient.
- * 4. Strategic decision-making by C-Level executives and business leaders will be more effective.

Which statements highlight the value and necessity for Architecture Governance to be adopted within organizations?

- A. 1 & 2
- B. 2 & 3
- C. 3 & 4
- D. 1 & 4

Answer: A

Explanation:

Architecture governance is the practice of ensuring compliance with the enterprise architecture and its principles, standards, and goals. Architecture governance provides the means to establish, monitor, and control the architecture development and implementation processes, and to resolve any issues or conflicts that may arise. Architecture governance also ensures that all stakeholders are represented and involved in the decision-making process, and that their interests and concerns are balanced and aligned. Statements 1 and 2 highlight the value and necessity for architecture governance to be adopted within organizations, as they emphasize the importance of responsibility, accountability, fairness, and transparency in the architectural activities. Statements 3 and 4 are more related to the benefits and outcomes of having a good enterprise architecture, rather than the governance aspect. References: : The TOGAF Standard, Version 9.2, Part VI: Architecture Capability Framework, Chapter 50: Architecture Governance : The TOGAF Standard, Version 9.2, Part III: ADM Guidelines and Techniques, Chapter 29: Architecture Governance

NEW QUESTION 92

- (Topic 1)

Which of the following best describes the purpose of the Architecture Roadmap?

- A. It provides for effective communication of the end architecture project to the stakeholders
- B. It is sent from the sponsor and triggers the start of an architecture development cycle
- C. It forms the basis of a contractual agreement between the sponsor and the architecture organization
- D. It lists work packages on a timeline showing progress towards the Target Architecture

Answer: D

Explanation:

The purpose of the Architecture Roadmap is to provide a high-level view of how the Baseline Architecture will transition to the Target Architecture over time. It lists work packages on a timeline showing progress towards the Target Architecture, as well as dependencies, risks, and benefits. The Architecture Roadmap forms part of the Implementation and Migration Plan and guides the execution of the architecture projects. References: <https://pubs.opengroup.org/architecture/togaf9-doc/arch/chap20.html>

NEW QUESTION 96

- (Topic 1)

Which of the following best describes the need for the ADM process to be governed?

- A. To enable development of reference architectures
- B. To verify that the method is being applied correctly
- C. To enable a fast response to market changes
- D. To permit the architecture domains to be integrated

Answer: B

Explanation:

According to the TOGAF standard, the need for the ADM process to be governed is to ensure that the architecture development and implementation activities are conducted in a consistent, coherent, and compliant manner¹. Governance provides the means to verify that the method is being applied correctly and effectively, and that the architecture deliverables and artifacts meet the quality and standards criteria¹. Governance also enables the management of risks, issues, changes, and dependencies that may arise during the ADM process¹.

Some of the benefits of governing the ADM process are²:

- Improved alignment of the architecture with the business strategy and objectives
- Enhanced stakeholder engagement and communication
- Increased reuse and integration of architecture assets and resources
- Reduced complexity and duplication of architecture efforts
- Increased agility and adaptability of the architecture to changing needs and requirements
- Improved compliance and auditability of the architecture outcomes and outputs

References: 1: Architecture Governance 2: Architecture Governance Benefits

NEW QUESTION 99

- (Topic 2)

Please read this scenario prior to answering the question

You are working as Chief Enterprise Architect at a large Internet company. The company has many divisions, ranging from cloud to logistics. The company has grown rapidly, expanding from initially selling physical books and media to a range of services including an online marketplace, live-streaming, eBooks, and cloud services.

Overall management of the numerous divisions has become challenging. Recent high-profile projects have overrun on budget and under delivered, damaging the company's reputation, and adversely impacting its share price. There is a widely held view within the executive management that the organization structure has played a major role in these project failures.

The company has an established Enterprise Architecture program based on the TOGAF standard, sponsored jointly by the Chief Executive Officer (CEO) and Chief Information Officer (CIO). The CEO has decided that the company needs to reorganize its divisions around artificial intelligence and machine learning with a focus on automation. The CEO has worked with the Enterprise Architects to create a strategic architecture for the reorganization, including an Architecture Vision, together with definitions for the four domain architectures. This sets out an ambitious vision of the future of the company over a three-year period. This includes a set of work packages and includes three distinct transformations.

The CIO has made it clear that prior to the approval of the detailed Implementation and Migration plan, the EA team will need to assess the risks associated with the proposed architecture. He has received concerns from key stakeholders across the company that the proposed reorganization may be too ambitious and there is doubt whether it can produce sufficient value to warrant the risks.

Refer to the scenario

You have been asked to recommend an approach to satisfy these concerns. Based on the TOGAF Standard, which of the following is the best answer?

- A. The Enterprise Architects should evaluate the organization's readiness to undergo change
- B. This will allow the risks associated with the transformations to be identified, classified, and mitigated for
- C. This should include identifying dependencies between the set of changes, including gaps and work packages. It will also identify improvement actions to be worked into the Implementation and Migration Plan
- D. The business value, effort, and risk associated for each transformation should be determined.
- E. The Enterprise Architects should bring together information about potential approaches and produce several alternative target transition architecture
- F. They should then investigate the different architecture alternatives and discuss these with stakeholders using the Architecture Alternatives and Trade-offs technique
- G. Once the target architecture has been selected, it should be analyzed using a state evolution table to determine the Transition Architecture
- H. A value realization process should then be established to ensure that the concerns raised are addressed.
- I. Establishing interoperability in alignment with the corporate operating model will ensure risks are minimized
- J. The Enterprise Architects should apply an interoperability analysis to evaluate any potential issues across the architecture
- K. This should include the development of a matrix showing the interoperability requirement
- L. These can then be included within the transformation strategy embedded in the target transition architecture
- M. The Enterprise Architects should then finalize the Architecture Roadmap and the Implementation and Migration Plan.
- N. Before preparing the detailed Implementation and Migration plan, the Enterprise Architects should review and consolidate the gap analysis results from Phases B to This will identify the transformations required to achieve the proposed Target Architecture
- O. The Enterprise Architects should then assess the readiness of the organization to undergo change and determine an overall direction to address and mitigate risks identified
- P. The Transition Architecture should then be planned to use a state evolution table.

Answer: A

Explanation:

The Business Transformation Readiness Assessment is a technique that can be used to evaluate the readiness of the organization to undergo change and to identify the actions needed to increase the likelihood of a successful business transformation. This technique can help to address the concerns of the key stakeholders about the risks and value of the proposed reorganization. The technique involves assessing the following aspects of the organization: vision, commitment, capacity, capability, culture, and communication. Based on the assessment, the risks associated with the transformations can be identified, classified, and mitigated for. The technique also helps to identify the dependencies between the set of changes, including gaps and work packages, and the improvement actions to be worked into the Implementation and Migration Plan. The technique also supports the determination of the business value, effort, and risk associated for each transformation, which can be used to prioritize and sequence the work packages and the Transition Architectures¹ References: 1: The TOGAF Standard, Version 9.2, Part III: ADM Guidelines and Techniques, Chapter 27: Business Transformation Readiness Assessment

NEW QUESTION 102

- (Topic 2)

Please read this scenario prior to answering the question

You are serving as the Lead Architect for an Enterprise Architecture team within a leading multinational biotechnology company. The company works in three major industries, including healthcare, crop production, and agriculture. Your team works within the healthcare division.

The healthcare division is developing a new vaccine, and has to demonstrate its effectiveness and safety in a set of clinical trials that satisfy the regulatory requirements of the relevant health authorities. The clinical trials are undertaken by its research laboratories at multiple facilities worldwide. In addition to internal research and development activities, the healthcare division is also involved in publicly funded collaborative research projects with industrial and academic partners.

The Enterprise Architecture team has been engaged in an architecture project to develop a secure system that will allow the healthcare researchers to share information more easily about their clinical trials, and work more collaboratively across the organization and also with its partners. This system will also connect with external partners.

The Enterprise Architecture team uses the TOGAF ADM with extensions required to support healthcare manufacturing practices and laboratory practices. Due to

the highly sensitive nature of the information that is managed, special care has been taken to ensure that each architecture domain considers the security and privacy issues that are relevant.

The Vice President for Worldwide Clinical Research is the sponsor of the Enterprise Architecture activity. She has stated that disruptions must be minimized for the clinical trials, and that the rollout must be undertaken incrementally.

Refer to the scenario

You have been asked to recommend the approach to identify the work packages for an incremental rollout meeting the requirements.

Based on the TOGAF standard which of the following is the best answer?

- A. You recommend that the Solution Building Blocks from a Consolidated Gaps, Solutions and Dependencies Matrix be grouped into a set of work package
- B. Using the matrix as a planning tool, regroup the work packages to account for dependencies
- C. Sequence the work packages into the Capability Increments needed to achieve the Target Architecture, so that the implementation team can schedule the rollout one region at a time to minimize disruption
- D. Document the work packages for the Enterprise Architecture using a Transition Architecture State Evolution Table.
- E. You recommend that a Consolidated Gap
- F. Solutions and Dependencies Matrix is used as a planning tool for creating work package
- G. For each gap classify whether the solution is either a new development, purchased solution, or based on an existing product
- H. Group the similar solutions together to define the work package
- I. Regroup the work packages into a set of Capability Increments to transition to the Target Architecture considering the schedule for clinical trials, and document in an Architecture Definition Increments Table.
- J. You recommend that an Implementation Factor Catalog is drawn up to indicate actions and constraints
- K. A Consolidated Gap
- L. Solutions and Dependencies Matrix should also be created
- M. For each gap
- N. identify a proposed solution and classify it as new development, purchased solution, or based on an existing product
- O. Group similar activities together to form work package
- P. Identify dependencies between work packages factoring in the clinical trial schedule
- Q. Regroup the work packages into a set of Capability Increments scheduled into a series of Transition Architectures.
- R. You recommend that the set of required Solution Building Blocks be determined by identifying those which need to be developed and which need to be procured
- S. Eliminate any duplicates
- T. Group the remaining Solution Building Blocks together to create the work packages using a CRUD (create, read, update, delete) matrix
- . Rank the work packages and select the most cost-effective options for inclusion in a series of Transition Architectures
- . Schedule the rollout of the work packages to be sequential across the geographic regions.

Answer: B

Explanation:

A Consolidated Gaps, Solutions and Dependencies Matrix is a technique that can be used to create work packages for an incremental rollout of the architecture. A work package is a set of actions or tasks that are required to implement a specific part of the architecture. A work package can be associated with one or more Architecture Building Blocks (ABBs) or Solution Building Blocks (SBBs), which are reusable components of business, IT, or architectural capability. A work package can also be associated with one or more Capability Increments, which are defined, discrete portions of the overall capability that deliver business value. A Capability Increment can be realized by one or more Transition Architectures, which are intermediate states of the architecture that enable the transition from the Baseline Architecture to the Target Architecture¹²³

The steps for creating work packages using this technique are:

? For each gap between the Baseline Architecture and the Target Architecture, identify a proposed solution and classify it as new development, purchased solution, or based on an existing product. A gap is a difference or deficiency in the current state of the architecture that needs to be addressed by the future state of the architecture. A solution is a way of resolving a gap by implementing one or more ABBs or SBBs.

? Group similar solutions together to define the work packages. Similar solutions are those that have common characteristics, such as functionality, technology, vendor, or location.

? Identify dependencies between work packages, such as logical, temporal, or resource dependencies. Dependencies indicate the order or priority of the work packages, and the constraints or risks that may affect their implementation.

? Regroup the work packages into a set of Capability Increments to transition to the Target Architecture. Capability Increments should be defined based on the business value, effort, and risk associated with each work package, and the schedule and objectives of the clinical trials. Capability Increments should also be aligned with the Architecture Vision and the Architecture Principles.

? Document the work packages and the Capability Increments in an Architecture

Definition Increments Table, which shows the mapping between the work packages, the ABBs, the SBBs, and the Capability Increments. The table also shows the dependencies, assumptions, and issues related to each work package and Capability Increment.

Therefore, the best answer is B, because it describes the approach to identify the work packages for an incremental rollout meeting the requirements, using the Consolidated Gaps, Solutions and Dependencies Matrix as a planning tool.

References: 1: The TOGAF Standard, Version 9.2, Part III: ADM Guidelines and Techniques, Chapter 30: Gap Analysis 2: The TOGAF Standard, Version 9.2, Part IV: Architecture Content Framework, Chapter 36: Building Blocks 3: The TOGAF Standard, Version 9.2, Part III: ADM Guidelines and Techniques, Chapter 31: Architecture Change Management : The TOGAF Standard, Version 9.2, Part II: Architecture Development Method (ADM), Chapter 23: Phase E: Opportunities and Solutions : The TOGAF Standard, Version 9.2, Part II: Architecture Development Method (ADM), Chapter 21: Phase F: Migration Planning : The TOGAF Standard, Version 9.2, Part II: Architecture Development Method (ADM), Chapter 18: Phase A: Architecture Vision : The TOGAF Standard, Version 9.2, Part III: ADM Guidelines and Techniques, Chapter 23: Architecture Principles

NEW QUESTION 106

- (Topic 2)

Please read this scenario prior to answering the question

You are working as the Chief Enterprise Architect within a law firm specializing in personal injury cases. Many of the firm's competitors have improved their litigation strategies, and efficiency by streamlining their processes using Artificial Intelligence (AI).

The CIO has approved a Request for Architecture Work to examine the use of Machine Learning in defining a new AI-driven litigation and finance process for the firm. This process would instruct the lawyers and analysts as to what tasks and portfolio they should work on. The key objectives are to increase task profitability, maximize staff utilization, and increase individual profitability.

The CIO has emphasized that the architecture should enable the fast implementation of continuous Machine Learning. The solution will need to be constantly measured for delivered value and be quickly iterated to success.

Some of the partners have expressed concerns about letting the AI make the decisions, others about the risks associated with use of it for the type of service they deliver. The CIO wants to know if these concerns can be addressed, and how risks will be covered by a new architecture enabling AI and Machine Learning. Refer to the scenario

You have been asked to respond to the CIO recommending an approach that would enable the development of an architecture that addresses the concerns of the CIO and the concerns of the partners.

Based on the TOGAF standard which of the following is the best answer?

- A. You recommend that a Communications Plan be created to address the key stakeholders, the most powerful and influential partner
- B. This plan should include a report that summarizes the key features of the architecture reflecting their requirement
- C. You will check with each key stakeholder that their concerns are being addressed
- D. Risk mitigation and agility will be explicitly addressed as a component of the architecture being developed.
- E. You recommend that an analysis of the stakeholders is undertaken resulting in documenting the stakeholders and their concerns in a Stakeholder Map
- F. The concerns and relevant views should then be defined for each group and recorded in the Architecture Vision document
- G. The requirements will include risk mitigation through regular assessment
- H. This will also allow a supervised agile implementation of the continuous Machine Learning.
- I. You recommend that all possible models be created for each candidate architecture that will enable the AI and Machine Learning solution
- J. This ensures that all the necessary data and detail is addressed
- K. A formal review should be held with the stakeholders to verify that their concerns have been properly addressed by the model
- L. Agility will be considered during Phase G Implementation Governance.
- M. You recommend creation of a set of business models that can be applied uniformly across all architecture project
- N. The stakeholders will be trained to understand the business models to ensure they can see that their concerns are being addressed
- O. Risk will be addressed once the Security Architecture is developed, which will happen later to avoid slowing down the agility required by the CIO.

Answer: B

Explanation:

A Stakeholder Map is a technique that can be used to identify and classify the stakeholders of the architecture work, and to document their key interests, requirements, and concerns. A stakeholder is any person, group, or organization that has a stake in the outcome of the architecture work, such as the sponsor, the client, the users, the suppliers, the regulators, or the competitors. A Stakeholder Map can help to understand the needs and expectations of the stakeholders, and to communicate and engage with them effectively¹

The steps for creating a Stakeholder Map are:

- ? Identify the stakeholders of the architecture work, using various sources and methods, such as interviews, surveys, workshops, or existing documents.
 - ? Classify the stakeholders according to their roles, responsibilities, and relationships, using various criteria and dimensions, such as power, influence, interest, attitude, or impact.
 - ? Define the concerns and relevant views for each stakeholder group, using various techniques, such as business scenarios, use cases, or value propositions. A concern is a key interest or issue that is relevant to the stakeholder, such as a goal, a problem, a need, or a risk. A view is a representation of the system of interest from the perspective of one or more stakeholders and their concerns.
 - ? Record the stakeholders and their concerns in a Stakeholder Map, which shows the mapping between the stakeholder groups, the concerns, and the views. The Stakeholder Map also shows the dependencies, assumptions, and issues related to each stakeholder and concern.
- Therefore, the best answer is B, because it recommends the approach that would enable the development of an architecture that addresses the concerns of the CIO and the partners, using the Stakeholder Map technique. The answer covers the following aspects:
- ? An analysis of the stakeholders is undertaken, which involves identifying, classifying, and defining the stakeholders and their concerns.
 - ? The stakeholders and their concerns are documented in a Stakeholder Map, which provides a clear and comprehensive picture of the stakeholder landscape and their interests.
 - ? The concerns and relevant views are recorded in the Architecture Vision document, which is the output of Phase A: Architecture Vision of the Architecture Development Method (ADM), which is the core process of the TOGAF standard that guides the development and management of the enterprise architecture. The Architecture Vision defines the scope and approach of the architecture work, and establishes the business goals and drivers that motivate the architecture work. The Architecture Vision also involves obtaining the approval and commitment of the sponsors and other key stakeholders, and initiating the Architecture Governance process²
 - ? The requirements include risk mitigation through regular assessments, which involves identifying, analyzing, and evaluating the risks that may affect the architecture, and determining the appropriate measures or actions to prevent, reduce, or mitigate the risks. Risk mitigation can also involve monitoring and reviewing the risk situation, and communicating and reporting the risk status and actions³
 - ? This approach also allows a supervised agile implementation of the continuous Machine Learning, which involves applying agile principles and practices to the architecture development and implementation, such as iterative and incremental delivery, frequent feedback, collaboration, and adaptation. A supervised agile implementation can help to ensure the quality, value, and alignment of the architecture, and to respond to the changing needs and expectations of the stakeholders.
- References: 1: The TOGAF Standard, Version 9.2, Part III: ADM Guidelines and Techniques, Chapter 24: Stakeholder Management 2: The TOGAF Standard, Version 9.2, Part II: Architecture Development Method (ADM), Chapter 18: Phase A: Architecture Vision 3: The TOGAF Standard, Version 9.2, Part III: ADM Guidelines and Techniques, Chapter 32: Risk Management : The TOGAF Standard, Version 9.2, Part III: ADM Guidelines and Techniques, Chapter 29: Applying Iteration to the ADM

NEW QUESTION 109

- (Topic 2)

Please read this scenario prior to answering the question

You have been appointed as senior architect working for an autonomous driving technology development company. The mission of the company is to build an industry leading unified technology and software platform to support connected cars and autonomous driving.

The company uses the TOGAF Standard as the basis for its Enterprise Architecture (EA) framework. Architecture development within the company follows the purpose-based EA Capability model as described in the TOGAF Series Guide: A Practitioners' Approach to Developing Enterprise Architecture Following the TOGAF® ADM.

An architecture to support strategy has been completed defining a long-range Target Architecture with a roadmap spanning five years. This has identified the need for a portfolio of projects over the next two years. The portfolio includes development of travel assistance systems using swarm data from vehicles on the road. The current phase of architecture development is focused on the Business Architecture which needs to support the core travel assistance services that the company plans to provide. The core services will manage and process the swarm data generated by vehicles, paving the way for autonomous driving in the future. The presentation and access to different variations of data that the company plans to offer through its platform poses an architecture challenge. The application portfolio needs to interact securely with various third-party cloud services, and V2X (Vehicle-to-Everything) service providers in many countries to be able to manage the data at scale. The security of V2X is a key concern for the stakeholders. Regulators have stated that the user's privacy be always protected, for example, so that the drivers' journey cannot be tracked or reconstructed by compiling data sent or received by the car.

Refer to the scenario

You have been asked to describe the risk and security considerations you would include in the current phase of the architecture development?

Based on the TOGAF standard which of the following is the best answer?

- A. You will focus on the relationship with the third parties required for the travel assistance systems and define a trust framework
- B. This will describe the relationship with each part
- C. Digital certificates are a key part of the framework and will be used to create trust between parties
- D. You will monitor legal and regulatory changes across all the countries to keep the trust framework in compliance.
- E. You will perform a qualitative risk assessment for the data assets exchanged with partner
- F. This will deliver a set of priorities, high to medium to low, based on identified threats, the likelihood of occurrence, and the impact if it did occur

- G. Using the priorities, you would then develop a Business Risk Model which will detail the risk strategy including classifications to determine what mitigation is enough.
- H. You will focus on data quality as it is a key factor in risk management.
- I. You will identify the datasets that need to be safeguarded.
- J. For each dataset, you will assign ownership and responsibility for the quality of data need.
- K. A security classification will be defined and applied to each dataset.
- L. The dataset owner will then be able to authorize processes that are trusted for a certain activity on the dataset under certain circumstances.
- M. You will create a security domain model so that assets with the same level can be managed under one security policy.
- N. Since data is being shared across partners, you will establish a security federation to include the
- O. This would include contractual arrangements, and a definition of the responsibility areas for the data exchanged, as well as security implications.
- P. You would undertake a risk assessment determining risks relevant to specific data assets.

Answer: D

Explanation:

A security domain model is a technique that can be used to define the security requirements and policies for the architecture. A security domain is a grouping of assets that share a common level of security and trust. A security policy is a set of rules and procedures that govern the access and protection of the assets within a security domain. A security domain model can help to identify the security domains, the assets within each domain, the security policies for each domain, and the relationships and dependencies between the domains¹

Since the data is being shared across partners, a security federation is needed to establish a trust relationship and a common security framework among the different parties. A security federation is a collection of security domains that have agreed to interoperate under a set of shared security policies and standards. A security federation can enable secure data exchange and collaboration across organizational boundaries, while preserving the autonomy and privacy of each party. A security federation requires contractual arrangements, and a definition of the responsibility areas for the data exchanged, as well as security implications²

A risk assessment is a process that identifies, analyzes, and evaluates the risks that may affect the architecture. A risk assessment can help to determine the likelihood and impact of the threats and vulnerabilities that may compromise the security and privacy of the data assets. A risk assessment can also help to prioritize and mitigate the risks, and to monitor and review the risk situation³

Therefore, the best answer is D, because it describes the risk and security considerations that would be included in the current phase of the architecture development, which is focused on the Business Architecture. The answer covers the security domain model, the security federation, and the risk assessment techniques that are relevant to the scenario. References: 1: The TOGAF Standard, Version 9.2, Part III: ADM Guidelines and Techniques, Chapter 35: Security Architecture and the ADM 2: The TOGAF Standard, Version 9.2, Part IV: Architecture Content Framework, Chapter 38: Security Architecture 3: The TOGAF Standard, Version 9.2, Part III: ADM Guidelines and Techniques, Chapter 32: Risk Management

NEW QUESTION 113

- (Topic 2)

Please read this scenario prior to answering the question

Your role is consultant to the Lead Architect within a multinational company that manufactures electronic components. The company has several manufacturing divisions located worldwide and a complex supply chain. After a recent study, senior management have stated a concern about business efficiency considering the company's multiple data centers and duplication of applications.

The company has a mature Enterprise Architecture (EA) practice and uses the TOGAF architecture development method in its EA practice. In addition to the EA program, the company has several management frameworks in use, including business planning, project/portfolio management, and operations management. The EA program is sponsored by the CIO.

A strategic architecture has been defined to improve the ability to meet customer demand and improve management of the supply chain. The strategic architecture includes the consolidation of multiple Enterprise Resource Planning (ERP) applications that have been operating independently in the divisions' production facilities.

Each division has completed the Architecture Definition documentation to meet its own specific manufacturing requirements. The enterprise architects have defined a set of work packages that address the gaps identified. They have identified the value produced, effort required, and dependencies between work packages to reach a target architecture that would integrate a new ERP environment into the company.

Because of the risks posed by change from the current environment, the architects have recommended that a phased approach occurs to implement the target architecture with several transition states. The overall implementation process is estimated to take several years.

Refer to the scenario

You have been asked what the next steps are for the migration planning. Based on the TOGAF standard which of the following is the best answer?

- A. You conduct a series of Compliance Assessments to ensure that the architecture is being implemented according to the contract.
- B. The Compliance Assessment should verify that the implementation team is using the proper development methodology.
- C. It should include deployment of monitoring tools and ensure that performance targets are being met.
- D. If they are not met, then you would identify changes to performance requirements and update those in the Implementation and Migration Plan.
- E. You place the Architecture Definition Document under configuration control.
- F. This will ensure that the architecture remains relevant and responsive to the needs of the enterprise.
- G. You would identify the development resources to undertake the project.
- H. You would then produce an Implementation Governance Model to manage the lessons learned prior to finalizing the plan.
- I. You recommend that lessons learned be applied as changes to the architecture without review.
- J. You estimate the business value for each project by applying the Business Value Assessment Technique to prioritize the implementation projects and project increments.
- K. The assessment should focus on return on investment and performance evaluation criteria that can be used to monitor the progress of the architecture transformation.
- L. You would confirm and plan a series of Transition Architecture phases using an Architecture Definition Increments Table that lists the projects.
- M. You assess how the Implementation and Migration plan impacts the other frameworks in use in the organization.
- N. Minimally, you ensure that the plan is coordinated with the business planning, project/portfolio management and operations management framework.
- O. You would then assign a business value to each work package, considering available resources and strategic fit.
- P. You then use the work packages to identify projects that will be in the Implementation and Migration Plan.

Answer: C

Explanation:

The Business Value Assessment Technique is a technique that can be used to estimate and compare the business value of the projects and project increments that implement the architecture work packages, which are the sets of actions or tasks that are required to implement a specific part of the architecture. The business value is the measure of the benefits or advantages that the project or project increment delivers to the business, such as increased revenue, reduced costs, improved quality, or enhanced customer satisfaction¹

The steps for applying the Business Value Assessment Technique are:

1. Identify the criteria and factors that are relevant to the business value assessment, such as costs, benefits, risks, and opportunities. The criteria and factors should be aligned with the business goals and drivers that motivate the architecture work, and the stakeholder requirements and concerns that influence the

architecture work.

? Assign weights and scores to the criteria and factors, using various methods, such as expert judgment, historical data, or analytical models. The weights and scores should reflect the importance and performance of the criteria and factors, and the trade-offs and preferences of the stakeholders.

? Calculate the business value for each project or project increment, using various techniques, such as net present value, return on investment, or balanced scorecard. The business value should indicate the expected or actual outcomes and impacts of the project or project increment on the business.

? Prioritize the implementation projects and project increments, based on the business value and other considerations, such as dependencies, resources, or risks. The prioritization should determine the order or sequence of the projects and project increments, and the allocation and utilization of the resources.

Therefore, the best answer is C, because it describes the next steps for the migration planning, which are the activities that support the transition from the Baseline Architecture to the Target Architecture. The answer covers the Business Value Assessment Technique, which is relevant to the scenario.

References: 1: The TOGAF Standard, Version 9.2, Part III: ADM Guidelines and Techniques, Chapter 28: Business Value Assessment Technique : The TOGAF Standard, Version 9.2, Part II: Architecture Development Method (ADM), Chapter 18: Phase A: Architecture Vision : The TOGAF Standard, Version 9.2, Part II: Architecture Development Method (ADM), Chapter 21: Phase F: Migration Planning : The TOGAF Standard, Version 9.2, Part IV: Architecture Content Framework, Chapter 36: Building Blocks

NEW QUESTION 116

.....

Relate Links

100% Pass Your OGEA-103 Exam with ExamBible Prep Materials

<https://www.exambible.com/OGEA-103-exam/>

Contact us

We are proud of our high-quality customer service, which serves you around the clock 24/7.

Viste - <https://www.exambible.com/>