

## Exam Questions JN0-363

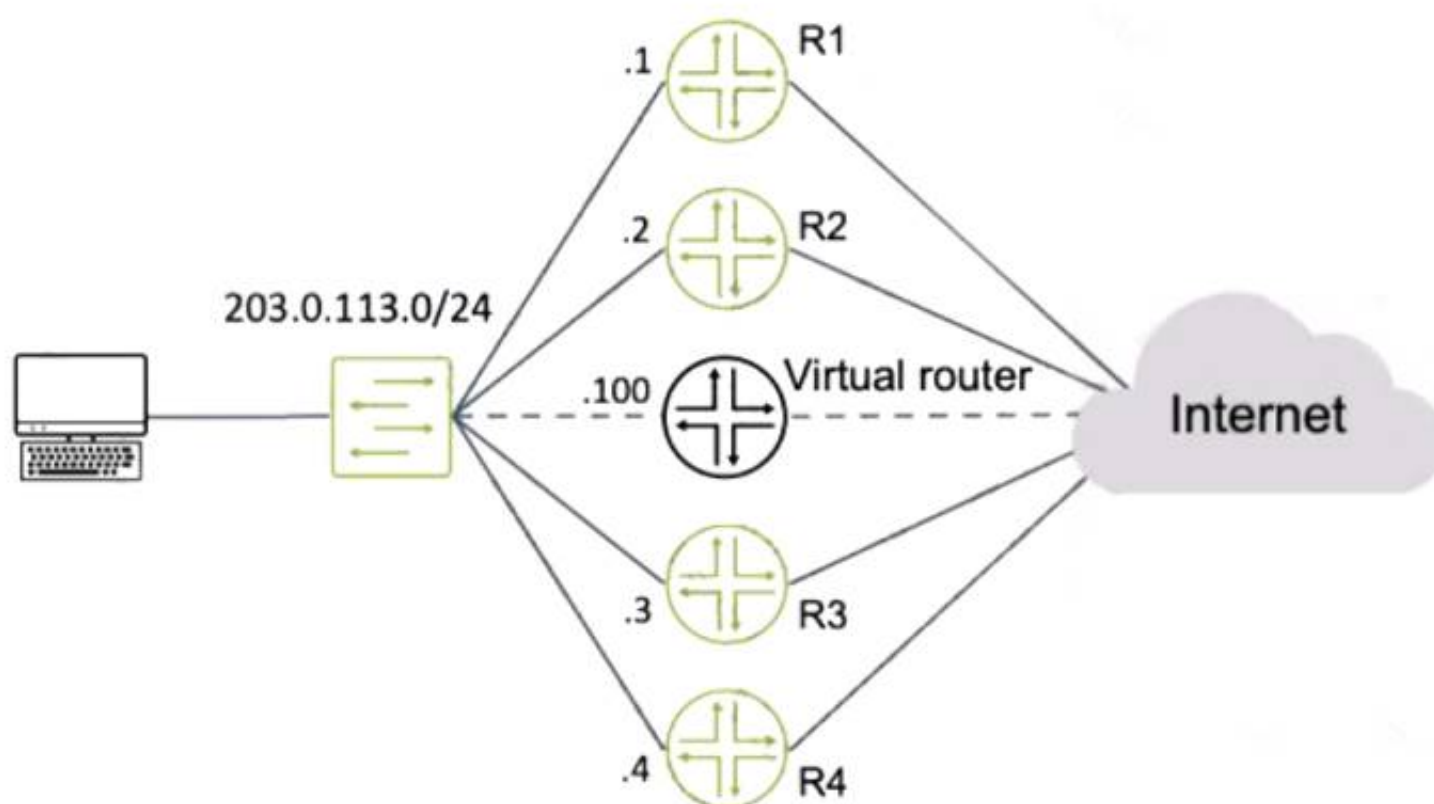
Service Provider Routing and Switching Specialist (JNCIS-SP)

<https://www.2passeasy.com/dumps/JN0-363/>



### NEW QUESTION 1

Exhibit



Routers R1 and R4 have a VRRP priority of 90, while R2 and R3 have default VRRP priorities. Referring to the exhibit, which router will be elected as the primary VRRP router?

- A. R3
- B. R4
- C. R2
- D. R1

**Answer: D**

### NEW QUESTION 2

What are three well-known mandatory BGP attributes? (Choose three.)

- A. next hop
- B. origin
- C. community
- D. MED
- E. AS path

**Answer: ABE**

### NEW QUESTION 3

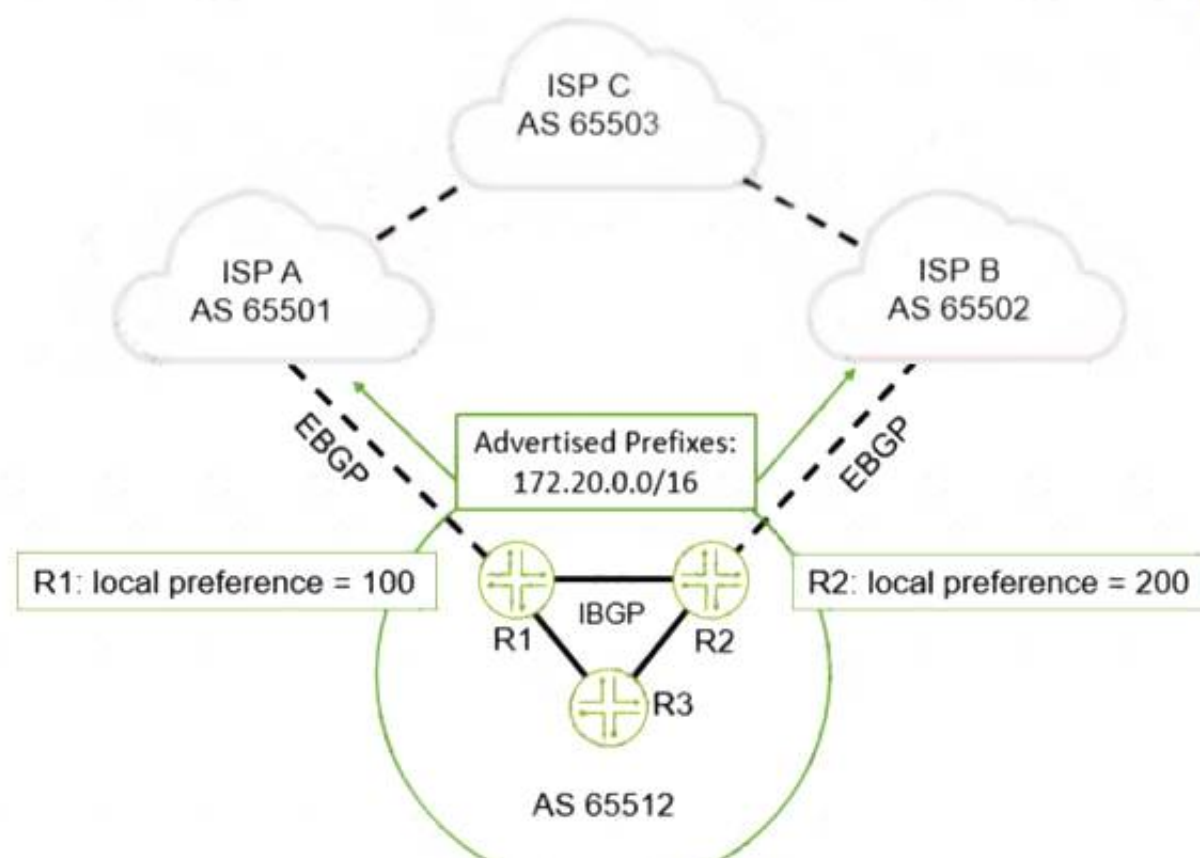
You have created a routing instance named vr3 that will provide access to Server 2 (10.0.0.2) (or the hosts on the 10.10.10.0/24 network). Which command would you use to test connectivity between vr3 and Server 2?

- A. user@vr3> ping 10.0.0.2 count 5
- B. user@vr3> ping 10.0.0.2 count 5 source 10.10.10.1
- C. user@router1> ping 10.0.0.2 count 5
- D. user@router1> ping 10.0.0.2 routing-instance vr3 count 5

**Answer: C**

### NEW QUESTION 4

Exhibit



You are advertising a summary route that represents your local network (172.20.0.0/16) to both ISP A and ISPB. You want to influence all traffic sent to you from ISP C to go through R2.

How would you accomplish this task?

- A. On R1, prepend your AS number three times on the 172.20.0.0/16 route when advertising it to ISP 1.
- B. On R1, change the local preference value to 250.
- C. On R2, prepend your AS number three times on the 172.20.0.0/16 route when advertising it to ISP 2.
- D. On R2, change the local preference value to 50.

**Answer: B**

#### NEW QUESTION 5

Exhibit

```
[edit]
user@router# show interfaces ge-0/0/0
unit 0 {
    family bridge {
        interface-mode trunk;
        vlan-id-list 101-120;
    }
}
[edit]
user@router# show interfaces ge-0/0/1
flexible-vlan-tagging;
unit 0 {
    vlan-id 200;
    family bridge {
        interface-mode trunk;
        inner-vlan-id-list 101-120;
    }
    ...
}
[edit]
user@router# show bridge-domains
...
[edit]
user@router# show bridge-domains
bd {
    vlan-id-list 101-120;
}
```

Referring to the exhibit, which two statements are correct? (Choose two.)

- A. Traffic ingressing ge-0/0/0 that is tagged with VLAN 101 will egress ge-0/0/1 unchanged.
- B. Traffic ingressing ge-0/0/0 that is tagged with VLAN 100 will be dropped.
- C. Traffic ingressing ge-0/0/0 that is tagged with VLAN 200 will egress ge-0/0/1 with an outer VLAN tag of 200.
- D. Traffic ingressing ge-0/0/0 that is tagged with VLAN 101 will egress ge-0/0/1 with an outer VLAN tag of 200.

Answer: AB

## NEW QUESTION 6

Exhibit

```
user@R2> show ospf interface extensive
Interface State Area DR ID BDR ID Nbrs
ge-0/0/3.0 DR 0.0.0.1 192.168.1.2 192.168.1.1 1 Type: LAN, Address: 172.26.1.2, Mask:
255.255.255.252, MTU: 1500, Cost: 1
DR addr: 172.26.1.2, BDR addr: 172.26.1.1, Priority: 128, Adj count: 1
Hello: 10, Dead: 40, ReXmit: 5, Not Stub
Auth type: None Topology default (ID 0) -> Cost: 0
ge-0/0/1.0 BDR 0.0.0.0 192.168.1.3 192.168.1.2 1
Type: LAN, Address: 172.26.2.1, Mask: 255.255.255.252, MTU: 1500, Cost: 1
DR addr: 172.26.2.2, BDR addr: 172.26.2.1, Priority: 128, Adj count: 1 Hello: 10,
Dead: 40, ReXmit: 5, Not Stub
Auth type: None
Topology default (ID 0) -> Cost: 0
```

Referring to the exhibit, which two statements are correct? (Choose two.)

- A. The OSPF Interfaces are configured as point-to-point.
- B. The ge-0/0/1.0 Interface is configured as passive.
- C. The R2 device is an ABR.
- D. Junos OS default OSPF hello timers and dead intervals are used on all interfaces.

Answer: BD

## NEW QUESTION 7

Exhibit



```
[edit]
user@Router1# show protocols bgp
group External {
    peer-as 64525;
    neighbor 172.25.1.2;
}
```

Referring to the exhibit, what must be included in the Route1 configuration when establishing an EBGP session with the ISP?

- A. A local address must be specified.
- B. A local AS must be specified.
- C. The BGP session type internal must be specified.
- D. The BGP session type external must be specified.

Answer: A

## NEW QUESTION 8

Which two statements are correct when using LDP? (Choose two.)

- A. The Inet.3 table will contain only the paths explicitly defined.
- B. The inet.3 table will contain a full mesh of label-switched paths to other LDP-enabled routers.
- C. LDP label-switched paths are created by configuring LDP on at least one physical router interface.
- D. LDP label-switched paths are created by configuring LDP on the loopback Interface.

Answer: BC

## NEW QUESTION 9

Exhibit

Exhibit

```
user@R2> show ospf route
Topology default Route Table:
```

Prefix	Path	Route	NH	Metric	NextHop	Nexthop
	Type	Type	Type		Interface	addr/label
192.168.1.1	Intra	AS BR	IP	1	ge-0/0/3.0	172.26.1.1
192.168.1.3	Intra	Area BR	IP	1	ge-0/0/1.0	172.26.2.2
172.18.1.0/24	Ext2	Network	IP	0	ge-0/0/3.0	172.26.1.1
172.26.1.0/30	Intra	Network	IP	1	ge-0/0/3.0	
172.26.2.0/30	Intra	Network	IP	1	ge-0/0/1.0	
172.26.3.0/30	Intra	Network	IP	100	ge-0/0/2.0	
172.26.4.0/30	Inter	Network	IP	2	ge-0/0/1.0	172.26.2.2
192.168.1.1/32	Ext2	Network	IP	1	ge-0/0/3.0	172.26.1.1
192.168.1.2/32	Intra	Network	IP	0	lo0.0	
192.168.1.3/32	Intra	Network	IP	1	ge-0/0/1.0	172.26.2.2
192.168.1.4/32	Inter	Network	IP	2	ge-0/0/1.0	172.26.2.2

Which prefix in the output shown in the exhibit is an external prefix injected by an OSPF router?

- A. 192.168.1.3
- B. 172.18.1.0/24
- C. 192.108.1.4
- D. 172.26.4.0/30

Answer: D

#### NEW QUESTION 10

Which LSA type does an OSPF ABR use to advertise external routes generated by an NSSAASBR into the backbone?

- A. Type 5
- B. Type 7
- C. Type 3
- D. Type 1

Answer: C

#### NEW QUESTION 10

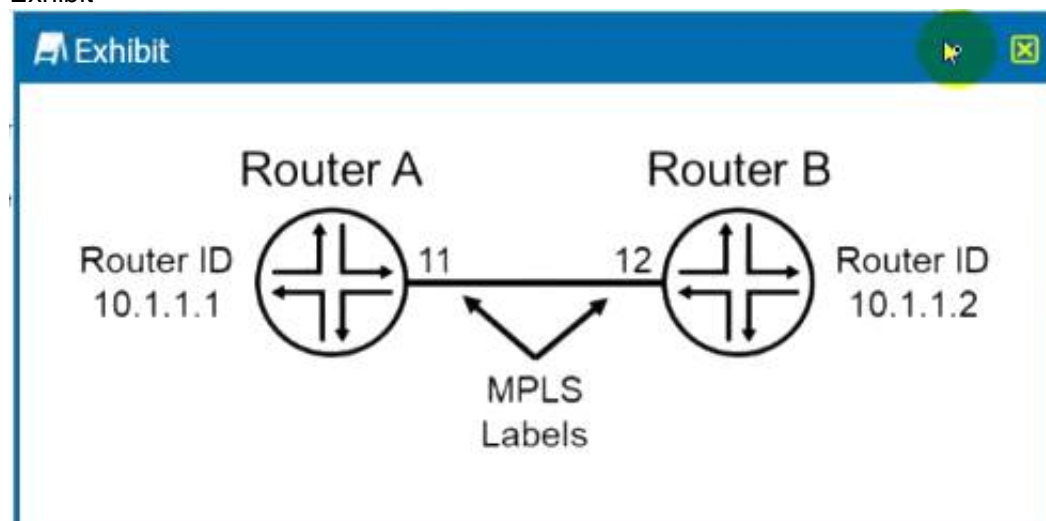
The segment routing SRGB start label is 10,000 and the SRGB index range is 500. In this scenario, which two statements are correct? (Choose two.)

- A. The first usable label is 10,001.
- B. The last usable label is 10,501.
- C. The last usable label is 10,499.
- D. The first usable label is 10,000.

Answer: CD

#### NEW QUESTION 12

Exhibit



The routers shown in the exhibit are configured for segment routing.

In this scenario, what is the adjacency SIO that Router B advertises to Router A?



- A. 12
- B. 10.1.1.1
- C. 10.1.1.2
- D. 11

Answer: B

#### NEW QUESTION 16

Exhibit

```

user@R1> show configuration protocols mpls
label-switched-path R1_TO_R5 {
    to 192.168.1.5;
    no-cspf;
}
interface ge-0/0/0.0;
interface ge-0/0/1.0;
    
```

You have an established LSP between your R1 and R5 devices using the configuration shown in the exhibit. You are asked to ensure that MPLS labels are used to forward traffic by all devices within the LSP. Which action will accomplish this behavior?

- A. Configure the ultimate-hop-popping statement under the R1\_TO\_R5 label switched path on R1.
- B. Configure the explicit-null statement under the protocol mpls hierarchy on R1.
- C. Delete the no-cspf statement under the R1\_TO\_R5 label switched path on R1.
- D. Configure the install statement under the R1\_TO\_R5 label switched path on R1.

Answer: D

#### NEW QUESTION 20

Exhibit

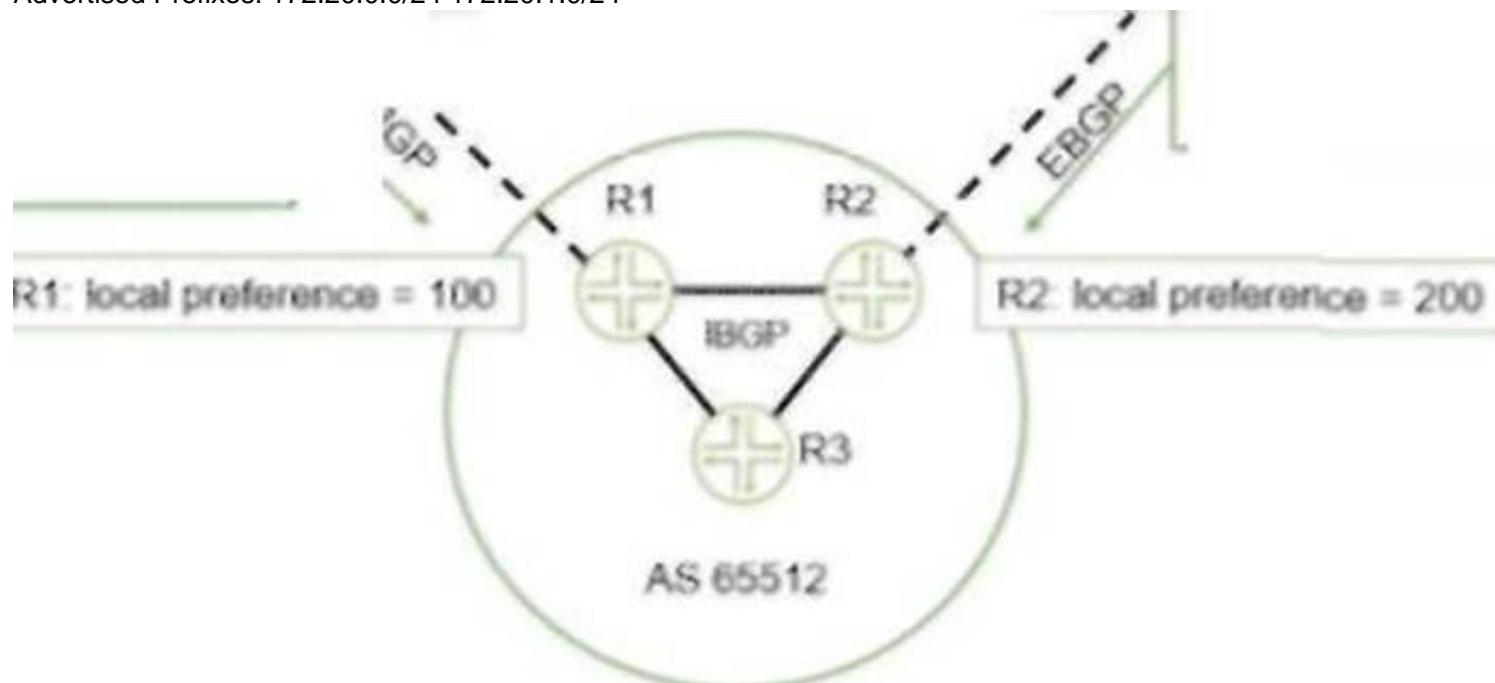
S Exhibit

LS11 A AS 65501 ISPB AS 65502

Advertised Prefixes: 172.20.0.0/24 172.20.20.0/24 172.20.21.0/24

\ N

Advertised Prefixes: 172.20.0.0/24 172.20.1.0/24



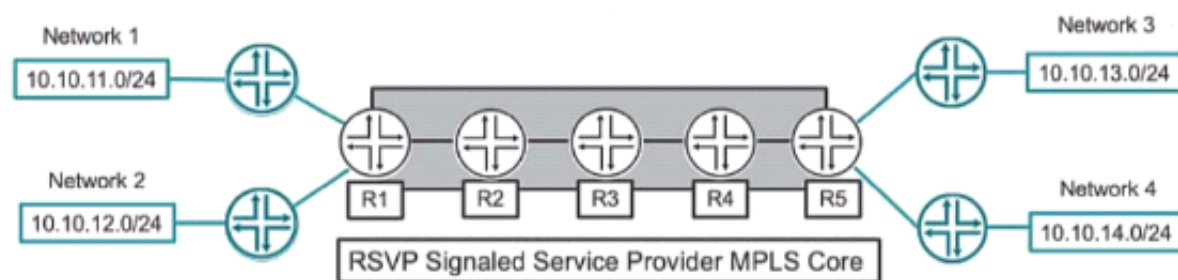
Referring to the exhibit, which two statements are correct? (Choose two.)

- A. Devices in AS 65512 will prefer ISP A for traffic destined to the 172.20.21.0/24 network.
- B. Devices In AS 65512 will prefer ISP A for traffic destined to the 172.20.0.0/24 network.
- C. Devices in AS 65512 will prefer ISP B for traffic destined to the 172.20.21.0/24 network.
- D. Devices In AS 65512 will prefer ISP B for traffic destined to the 172.20.0.0/24 network.

Answer: C

## NEW QUESTION 25

Exhibit



Referring to the exhibit, what is the minimum number of LSPs required to support all four networks?

- A. 1
- B. 2
- C. 8
- D. 4

**Answer: C**

## NEW QUESTION 29

Exhibit

```

[edit]
user@R1# show policy-options
policy-statement next-hop-self-policy {
  term alter-next-hop {
    then {
      next-hop self;
    }
  }
}
[edit]
user@R1# show protocols bgp
group int-64503 {
  type internal;
  local-address 192.168.100.1;
  neighbor 192.168.100.2;
}
group ext-64501 {
  type external;
  peer-AS 64501;
  neighbor 172.30.1.2;
}

```

Referring to the exhibit, where should next-hop-self-policy be applied to alter the next-hop value?

- A. The policy is applied as an export policy for the group int-64503.
- B. The policy is applied as an export policy for the group ext-64501.
- C. The policy is applied as an import policy for the group int- 64 503.
- D. The policy is applied as an Import policy for the group ext-64501.

**Answer: D**

## NEW QUESTION 31

Exhibit

```

[edit]
user@router# set routing-options nonstop-routing
[edit]
user@router#

```

Referring to the exhibit, which two additional steps should you take to fully configure NSR? (Choose two.)

- A. You should configure the max period for NSR precision timers.
- B. You must configure GRES.
- C. You must configure graceful restart.
- D. You should configure commit synchronization.

**Answer: AB**

#### NEW QUESTION 35

Which configuration setting prohibits a static route from being redistributed by a dynamic routing protocol?

- A. route-filter
- B. no-readvertise
- C. qualified-next-hop
- D. passive

**Answer: B**

#### NEW QUESTION 39

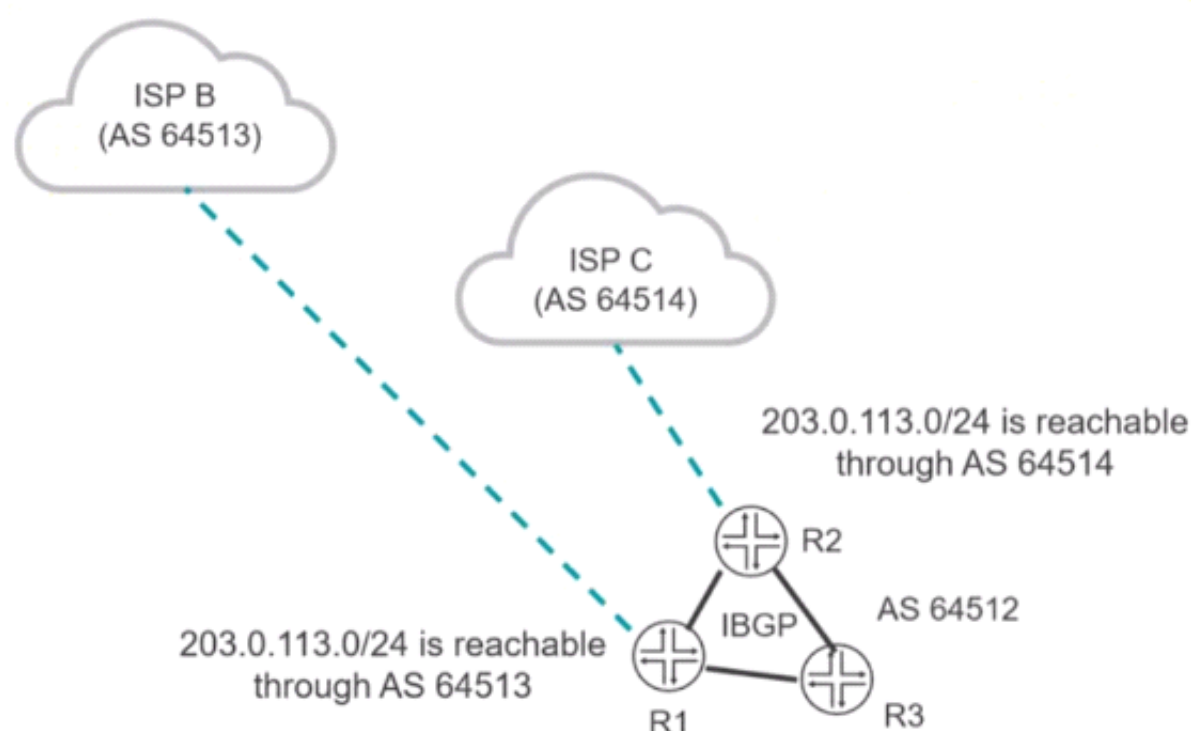
Which BGP attribute is used to detect routing loops?

- A. AS path
- B. MED
- C. local preference
- D. next hop

**Answer: A**

#### NEW QUESTION 44

Exhibit



You want the R1 and R3 routers to forward traffic destined to the 203.0.113.0/24 network through R2. Which BGP attribute would you modify to satisfy this requirement?

- A. community
- B. origin
- C. MED
- D. local preference

**Answer: C**

#### NEW QUESTION 49

Which two statements are correct about the community BGP attribute on a Junos device? (Choose two.)

- A. The community attribute is a mandatory BGP attribute.
- B. If the community attribute is present, it is ignored and deleted in the BGP updates.
- C. If the community attribute is present, it should be passed unchanged in the BGP updates.
- D. The community attribute is an optional BGP attribute.

**Answer: AC**

#### NEW QUESTION 50

You want to enable a routing platform with redundant REs to switch from a primary RE to a backup RE without alerting peer nodes. Which two technologies would you use to satisfy this requirement? (Choose two.)

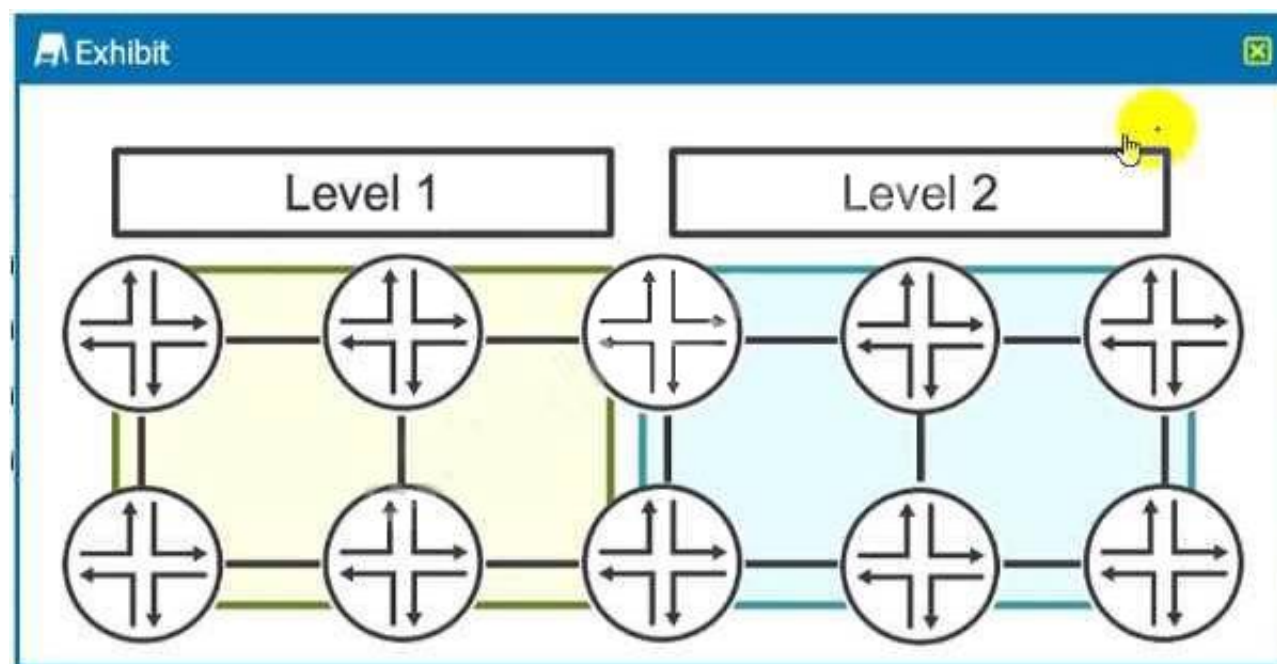
- A. GRES
- B. VRRP
- C. NSR
- D. ISSU

**Answer: BC**

#### NEW QUESTION 53

Exhibit





Referring to the exhibit, which two statements are correct? (Choose two.)

- A. Prefixes in Level 1 will be redistributed to Level 2.
- B. Prefixes In Level 2 will be not redistributed to Level 1.
- C. Prefixes in Level 2 will be redistributed to Level 1.
- D. Prefixes in Level 1 will not be redistributed to Level 2.

**Answer: C**

#### NEW QUESTION 57

Exhibit

```
user@router-re0> show system s?
```

Possible completions:

services	Show service applications information
snapshot	Show snapshot information
software	Show loaded JUNOS extensions
statistics	Show statistics for protocol
storage	Show local storage data

You have configured graceful RE switchover (GRES), however you cannot complete the show system switchover command.

Referring to the exhibit, what is the problem?

- A. The command is only available if non-stop routing is enabled.
- B. The command is only available on the backup Routing Engine.
- C. The command is only available If a backup router is configured.
- D. The command is only available If graceful restart is enabled.

**Answer: B**

#### NEW QUESTION 59

Which new field is added to an IPv6 header as compared to IPv4?

- A. version
- B. checksum
- C. fragment offset
- D. flow label

**Answer: D**

#### NEW QUESTION 62

You are bringing a new network online with three IS-IS routers using default Junos election priorities. The routers are configured as Level 2 only IS-IS routers. Which statement is true about the DIS election in this scenario?

- A. The router with the highest MAC address will be elected as the DIS.
- B. The router with the highest numerical lo0 IP address will be elected as the DIS.
- C. The router with the lowest numerical lo0 IP address will be elected as the DIS.
- D. The router with the lowest MAC address will be elected as the DIS.

**Answer: B**

#### NEW QUESTION 65

You are asked to create connections between routing instances on the same Junos device and route between the connected Instances. What are two ways to accomplish this task? (Choose two.)

- A. Use physical interfaces.
- B. Use an IRB interface.
- C. Use logical tunnel interfaces.

D. Use loopback interfaces.

**Answer:** AB

**NEW QUESTION 68**

You are asked to configure an LSP which uses the OSPF link state database for path computations. Which two statements are correct in this scenario? (Choose two.)

- A. You must use the no-cspf parameter in the label-switched-path configuration.
- B. Traffic engineering extensions are enabled by default in OSPF.
- C. Traffic engineering extensions are not enabled by default in OSPF.
- D. You must use the policing parameter in the label-switched-path configuration.

**Answer:** AC

**NEW QUESTION 72**

.....

## THANKS FOR TRYING THE DEMO OF OUR PRODUCT

Visit Our Site to Purchase the Full Set of Actual JN0-363 Exam Questions With Answers.

We Also Provide Practice Exam Software That Simulates Real Exam Environment And Has Many Self-Assessment Features. Order the JN0-363 Product From:

<https://www.2passeasy.com/dumps/JN0-363/>

## Money Back Guarantee

### JN0-363 Practice Exam Features:

- \* JN0-363 Questions and Answers Updated Frequently
- \* JN0-363 Practice Questions Verified by Expert Senior Certified Staff
- \* JN0-363 Most Realistic Questions that Guarantee you a Pass on Your FirstTry
- \* JN0-363 Practice Test Questions in Multiple Choice Formats and Updatesfor 1 Year