



# Snowflake

## Exam Questions SnowPro-Core

SnowPro Core Certification Exam

#### NEW QUESTION 1

- (Exam Topic 1)

Select the three types of tables that exist within Snowflake. Choose 3 answers

- A. Temporary
- B. Transient
- C. Provisioned
- D. Permanent

**Answer:** ABD

#### Explanation:

Reference: <https://community.snowflake.com/s/article/Making-Transient-table-by-Default>

#### NEW QUESTION 2

- (Exam Topic 1)

What is the most granular object that the Time Travel retention period can be defined on? Select one.

- A. Account
- B. Database
- C. Schema
- D. Table

**Answer:** D

#### Explanation:

Reference: <https://docs.snowflake.com/en/user-guide/data-time-travel.html#data-retention-period>

#### NEW QUESTION 3

- (Exam Topic 1)

True or False: When active, a pipe requires a dedicated Virtual Warehouse to execute.

- A. True
- B. False

**Answer:** B

#### NEW QUESTION 4

- (Exam Topic 1)

Which of the following accurately represents how a table fits into Snowflake's logical container hierarchy? Select one.

- A. Account -> Schema -> Database -> Table
- B. Account -> Database -> Schema -> Table
- C. Database -> Schema -> Table -> Account
- D. Database -> Table -> Schema -> Account

**Answer:** B

#### Explanation:

Reference: <https://docs.snowflake.com/en/sql-reference/ddl-database.html>

#### NEW QUESTION 5

- (Exam Topic 1)

True or False: When a new Snowflake object is created, it is automatically owned by the user who created it.

- A. True
- B. False

**Answer:** A

#### Explanation:

Reference: <https://docs.snowflake.com/en/user-guide/security-access-control-overview.html>

#### NEW QUESTION 6

- (Exam Topic 1)

The Query History in the Snowflake Web Interface (UI) is kept for approximately:

- A. 60 minutes
- B. 24 hours
- C. 14 days
- D. 30 days
- E. 1 year

**Answer:** C

**Explanation:**

Reference: [https://docs.snowflake.com/en/sql-reference/account-usage/query\\_history.html](https://docs.snowflake.com/en/sql-reference/account-usage/query_history.html)

**NEW QUESTION 7**

- (Exam Topic 1)

Credit Consumption by the Compute Layer (Virtual Warehouses) is based on: (Choose two.)

- A. Number of users
- B. Warehouse size
- C. Amount of data processed
- D. # of clusters for the Warehouse

**Answer:** BD

**Explanation:**

<https://docs.snowflake.com/en/user-guide/credits.html#virtual-warehouse-credit-usage> "Snowflake credits are charged based on the number of virtual warehouses you use, how long they run, and their size."

**NEW QUESTION 8**

- (Exam Topic 1)

True or False: A Snowflake account is charged for data stored in both Internal and External Stages.

- A. True
- B. False

**Answer:** A

**Explanation:**

Reference: <https://docs.snowflake.com/en/user-guide/tables-storage-considerations.html>

**NEW QUESTION 9**

- (Exam Topic 1)

Which of the following is true of Snowpipe via REST API? Choose 2 answers

- A. you can only use it on internal Stages
- B. All COPY INTO options are available fluting pipe creation
- C. Snowflake automatically manages the compute required to execute the Pipe's copy into commands
- D. Snowpipe keeps track of which files it has loaded

**Answer:** CD

**Explanation:**

<https://docs.snowflake.com/en/sql-reference/sql/create-pipe.html#usage-notes>

**NEW QUESTION 10**

- (Exam Topic 1)

Which of the following DML commands isn't supported by Snowflake?

- A. UPSERT
- B. MERGE
- C. UPDATE
- D. TRUNCATE TABLE

**Answer:** A

**Explanation:**

Reference: <https://docs.snowflake.com/en/sql-reference/sql-dml.html>

**NEW QUESTION 10**

- (Exam Topic 1)

Which of the following are examples of operations that require a Virtual Warehouse to complete, assuming no queries have been executed previously? Choose 3 answers

- A. MIN(< column value>)
- B. COPY
- C. SUM(<< column value >>)
- D. UPDATE

**Answer:** BCD

**NEW QUESTION 14**

- (Exam Topic 1)

What is the lowest Snowflake edition that offers Time Travel up to 90 days?

- A. standard Edition
- B. Premier Edition

- C. Enterprise Edition
- D. Business Critical Edition

**Answer:** C

**Explanation:**

Reference: <https://docs.snowflake.com/en/user-guide/data-availability.html>

#### NEW QUESTION 15

- (Exam Topic 1)

A role is created and owns 2 tables. This role is then dropped. Who will now own the two tables?

- A. The tables are now orphaned
- B. The user that deleted the role
- C. SYSADMIN
- D. The assumed role that dropped the role

**Answer:** D

**Explanation:**

Reference: <https://docs.snowflake.com/en/sql-reference/sql/drop-role.html>

#### NEW QUESTION 16

- (Exam Topic 1)

Which of the following are valid Snowflake Virtual Warehouse Scaling Policies? (Choose two.)

- A. Custom
- B. Economy
- C. Optimized
- D. Standard

**Answer:** BD

**Explanation:**

Reference: <https://community.snowflake.com/s/article/Snowflake-Visualizing-Warehouse-Performance>

#### NEW QUESTION 19

- (Exam Topic 1)

Which item in the Data Warehouse migration process does not apply in Snowflake? (Select two)

- A. Migrate Users
- B. Migrate Schemas
- C. Migrate Indexes
- D. Build the Data pipeline

**Answer:** CD

#### NEW QUESTION 23

- (Exam Topic 1)

True or False: Pipes can be suspended and resumed.

- A. True
- B. False

**Answer:** A

**Explanation:**

<https://docs.snowflake.com/en/user-guide/data-load-snowpipe-intro.html#pausing-or-resuming-pipes> Pausing or Resuming Pipes In addition to the pipe owner, a role that has the following minimum permissions can pause or resume the pipe:

#### NEW QUESTION 24

- (Exam Topic 1)

Snowflake provides a mechanism for its customers to override its clustering algorithms. This method is:

- A. Micro-partitions
- B. Clustering keys
- C. Key partitions
- D. Clustered partitions

**Answer:** B

**Explanation:**

Reference: <https://community.snowflake.com/s/article/Snowflake-What-the-Cluster>

#### NEW QUESTION 28

- (Exam Topic 1)

True or False: Each worksheet in the Snowflake Web Interface (UI) can be associated with different roles, databases, schemas, and Virtual Warehouses.

- A. True
- B. False

**Answer:** A

**Explanation:**

Reference: <https://docs.snowflake.com/en/user-guide/ui-worksheet.html>

#### NEW QUESTION 30

- (Exam Topic 1)

When scaling up Virtual Warehouse by increasing Virtual Warehouse t-shirt size, you are primarily scaling for improved: Select one.

- A. Concurrency
- B. Performance

**Answer:** B

**Explanation:**

Reference:

<https://docs.snowflake.com/en/user-guide/warehouses-considerations.html#warehouse-resizing-improves-perfor>

#### NEW QUESTION 34

- (Exam Topic 1)

What is the recommended Snowflake data type to store semi-structured data like JSON?

- A. VARCHAR
- B. RAW
- C. LOB
- D. VARIANT

**Answer:** D

**Explanation:**

Reference: <https://docs.snowflake.com/en/sql-reference/data-types-semistructured.html>

#### NEW QUESTION 37

- (Exam Topic 1)

Select the different types of Internal Stages: (Choose three.)

- A. Named Stage
- B. User Stage
- C. Table Stage
- D. Schema Stage

**Answer:** ABC

**Explanation:**

Reference: <https://dwgeek.com/type-of-snowflake-stages-how-to-create-and-use.html/#Snowflake-Internal- Named-Stage>

#### NEW QUESTION 41

- (Exam Topic 1)

True or False: You can resize a Virtual Warehouse while queries are running.

- A. True
- B. False

**Answer:** A

**Explanation:**

Reference: <https://docs.snowflake.com/en/user-guide/warehouses-tasks.html>

#### NEW QUESTION 45

- (Exam Topic 1)

True or False: Snowflake allows its customers to directly access the micro-partition files that make up its tables.

- A. True
- B. False

**Answer:** B

#### NEW QUESTION 50

- (Exam Topic 1)

True or False: Snowflake supports federated authentication in all editions.

- A. True
- B. False

**Answer:** A

**Explanation:**

Reference:

<https://community.snowflake.com/s/news/federated-authentication-sso-now-available-in-all-snowflake-editions>

**NEW QUESTION 53**

- (Exam Topic 1)

Which of the following languages can be used to implement Snowflake User Defined Functions (UDFs)? Choose 2 answers

- A. Java
- B. JavaScript
- C. SQL
- D. Python

**Answer:** BC

**Explanation:**

Reference: <https://docs.snowflake.com/en/sql-reference/user-defined-functions.html>

**NEW QUESTION 57**

- (Exam Topic 1)

On which of the following cloud platforms can a Snowflake account be hosted? (Choose three.)

- A. Amazon Web Services
- B. Private Virtual Cloud
- C. Oracle Cloud
- D. Microsoft Azure Cloud
- E. Google Cloud Platform
- F. Alibaba Cloud

**Answer:** ADE

**NEW QUESTION 60**

- (Exam Topic 1)

Which of the following commands are not blocking operations? Choose 2 answers

- A. UPDATE
- B. INSERT
- C. MERGE
- D. COPY

**Answer:** BD

**NEW QUESTION 62**

- (Exam Topic 1)

Fail-safe is unavailable on which table types?

- A. Temporary
- B. Transient
- C. Provisional
- D. Permanent

**Answer:** AB

**Explanation:**

Reference: <https://docs.snowflake.com/en/user-guide/tables-temp-transient.html>

**NEW QUESTION 66**

- (Exam Topic 1)

To run a Multi-Cluster Warehouse in auto-scale mode, a user would:

- A. Configure the Maximum Clusters setting to “Auto-Scale”
- B. Set the Warehouse type to “Auto”
- C. Set the Minimum Clusters and Maximum Clusters settings to the same value
- D. Set the Minimum Clusters and Maximum Clusters settings to the different values

**Answer:** D

**Explanation:**

Reference: [https://help.pentaho.com/Documentation/9.1/Products/Modify\\_Snowflake\\_warehouse](https://help.pentaho.com/Documentation/9.1/Products/Modify_Snowflake_warehouse)

**NEW QUESTION 71**

- (Exam Topic 1)

When creating a user it is advisable to:

Choose 2 answers

- A. Set the user to be initially disabled
- B. Force an immediate password change
- C. Set a default role for the user
- D. Set the number of minutes to unlock to 15 minutes
- E. Set the users access to expire within a specified timeframe

**Answer:** BC

#### NEW QUESTION 73

- (Exam Topic 1)

Which of the following objects can be cloned? (Choose four.)

- A. Tables
- B. Named File Formats
- C. Schemas
- D. Shares
- E. Databases
- F. Users

**Answer:** ABCE

#### Explanation:

Which Objects Can Be Cloned?

Data Containment Objects. Databases. Schemas. Tables. Streams.

Data Configuration and Transformation Objects. Stages. File Formats. Sequences. Tasks

#### NEW QUESTION 78

- (Exam Topic 1)

Which of the following statements is true of data loading? Select one.

- A. Resizing the virtual warehouse from x-Small to Small will process a single file twice as fast
- B. The "deal file size for loading is 16MB to match micro-partition size
- C. Many files in the 10-100MB range tend to land in the 'sweet spot' for load parallelism Once loaded, there is no option to force a reload of an already loaded file

**Answer:** C

#### NEW QUESTION 79

- (Exam Topic 1)

What is the minimum Snowflake edition that provides multi-cluster warehouses and up to 90 days of Time Travel?

- A. Standard
- B. Premier
- C. Enterprise
- D. Business Critical Edition

**Answer:** C

#### Explanation:

Reference: <https://docs.snowflake.com/en/user-guide/intro-editions.html>

#### NEW QUESTION 81

- (Exam Topic 1)

True or False: You can define multiple columns within a clustering key on a table.

- A. True
- B. False

**Answer:** A

#### Explanation:

Reference: <https://docs.snowflake.com/en/user-guide/tables-clustering-keys.html>

#### NEW QUESTION 86

- (Exam Topic 1)

Which of the following connectors are available in the Downloads section of the Snowflake web Interface (UI)?

Choose 2 answers

- A. SnowSQL
- B. ODBC
- C. R
- D. HIVE

**Answer:** AB

**Explanation:**

Reference: <https://docs.snowflake.com/en/user-guide/connecting.html>

**NEW QUESTION 87**

- (Exam Topic 1)

What is the minimum duration charged when starting a virtual warehouse?

- A. 1 second
- B. 1 minute
- C. 1 hour
- D. 1 day

**Answer:** B

**NEW QUESTION 92**

- (Exam Topic 1)

True or False: A table in Snowflake can only be queried using the Virtual Warehouse that was used to load the data.

- A. True
- B. False

**Answer:** B

**NEW QUESTION 95**

- (Exam Topic 1)

What are the three things customers want most from their enterprise data warehouse solution? Choose 3 answers

- A. On-premise availability
- B. Simplicity
- C. Open source based
- D. Concurrency
- E. Performance

**Answer:** BDE

**NEW QUESTION 100**

- (Exam Topic 1)

True or False: When Snowflake is configured to use Single Sign-on (sso), Snowflake receive the usernames and credentials from the sso service and loads them into the customer's Snowflake account.

- A. True
- B. false:

**Answer:** B

**Explanation:**

Reference: <https://docs.snowflake.com/en/user-guide/admin-security-fed-auth-configure-snowflake.html>

**NEW QUESTION 103**

- (Exam Topic 1)

What is the maximum compressed row size in Snowflake?

- A. 8KB
- B. 16MB
- C. 50MB
- D. 4000GB

**Answer:** B

**Explanation:**

MAX size for compressed data for semi-structured data type is also 16 MB. That means if our table has a semi-structured data type column with 16MB data other columns will have NULL data.

**NEW QUESTION 104**

- (Exam Topic 1)

What happens when a Data Provider revokes privileges to a Share on an object in their source database?

- A. The object immediately becomes unavailable for all Data Consumers
- B. Any additional data arriving after this point in time will not be visible to Data Consumers
- C. The Data Consumers stop seeing data updates and become responsible for storage charges for the object
- D. A static copy of the object at the time the privilege was revoked is created In the Data Consumers' accounts

**Answer:** A

**NEW QUESTION 105**



- (Exam Topic 1)

True or False: Multi\_Factor Authentication (MFA) in Snowflake is only supported in conjunction with single Sign-on (sso).

- A. True
- B. False

**Answer:** B

**Explanation:**

Reference: <https://docs.snowflake.com/en/user-guide/admin-security-fed-auth-use.html>

#### NEW QUESTION 109

- (Exam Topic 1)

True or False: The user has to specify which cluster a query will run on in multi-clustering Warehouse.

- A. True
- B. False

**Answer:** B

**Explanation:**

Reference: <https://docs.snowflake.com/en/user-guide/warehouses-multiclust.html>

#### NEW QUESTION 111

- (Exam Topic 1)

True or False: Snowflake charges additional fees to Data providers for each share they create.

- A. True
- B. False

**Answer:** B

**Explanation:**

"The costs for sharing data with Snowflake are minimal and straightforward. Data providers simply pay Snowflake for the data they store, and data consumers pay for the compute resources their queries consume."

#### NEW QUESTION 116

- (Exam Topic 1)

True or False: It is possible to unload structured data to semi-structured formats such as JSON and parquet.

- A. True
- B. False

**Answer:** A

**Explanation:**

Reference: <https://docs.snowflake.com/en/user-guide/data-unload-prepare.html>

#### NEW QUESTION 121

- (Exam Topic 2)

Where would a Snowflake user find information about query activity from 90 days ago?

- A. Account\_\_\_usage . query history view
- B. account\_\_\_usage.query\_\_\_history\_\_\_archive View
- C. information\_\_\_schema . cruery\_history view
- D. information\_\_\_schema - query history\_by\_ses s i on view

**Answer:** A

#### NEW QUESTION 125

- (Exam Topic 2)

True or False: Loading data into Snowflake requires that source data files be no larger than 16MB.

- A. True
- B. False

**Answer:** B

**Explanation:**

By default, COPY INTO location statements separate table data into a set of output files to take advantage of parallel operations. The maximum size for each file is set using the MAX\_FILE\_SIZE copy option. The default value is 16777216 (16 MB) but can be increased to accommodate larger files. The maximum file size supported is 5 GB for Amazon S3, Google Cloud Storage, or Microsoft Azure stages. To unload data to a single output file (at the potential cost of decreased performance), specify the SINGLE = true copy option in your statement. You can optionally specify a name for the file in the path.

#### NEW QUESTION 128

- (Exam Topic 2)

A marketing co-worker has requested the ability to change a warehouse size on their medium virtual warehouse called mktg\_\_WH. Which of the following statements will accommodate this request?

- A. ALLOW RESIZE ON WAREHOUSE MKTG\_\_WH TO USER MKTG\_\_LEAD;
- B. GRANT MODIFY ON WAREHOUSE MKTG WH TO ROLE MARKETING;
- C. GRANT MODIFY ON WAREHOUSE MKTG\_\_WH TO USER MKTG\_\_LEAD;
- D. GRANT OPERATE ON WAREHOUSE MKTG WH TO ROLE MARKETING;

**Answer:** B

#### NEW QUESTION 132

- (Exam Topic 2)

Which of the following are valid methods for authenticating users for access into Snowflake? (Select THREE)

- A. SCIM
- B. Federated authentication
- C. TLS 1.2
- D. Key-pair authentication
- E. OAuth
- F. OCSP authentication

**Answer:** BDE

#### NEW QUESTION 135

- (Exam Topic 2)

What happens when an external or an internal stage is dropped? (Select TWO).

- A. When dropping an external stage, the files are not removed and only the stage is dropped
- B. When dropping an external stage, both the stage and the files within the stage are removed
- C. When dropping an internal stage, the files are deleted with the stage and the files are recoverable
- D. When dropping an internal stage, the files are deleted with the stage and the files are not recoverable
- E. When dropping an internal stage, only selected files are deleted with the stage and are not recoverable

**Answer:** AC

#### NEW QUESTION 140

- (Exam Topic 2)

A developer is granted ownership of a table that has a masking policy. The developer's role is not able to see the masked data. Will the developer be able to modify the table to read the masked data?

- A. Yes, because a table owner has full control and can unset masking policies.
- B. Yes, because masking policies only apply to cloned tables.
- C. No, because masking policies must always reference specific access roles.
- D. No, because ownership of a table does not include the ability to change masking policies

**Answer:** A

#### NEW QUESTION 144

- (Exam Topic 2)

What is a responsibility of Snowflake's virtual warehouses?

- A. Infrastructure management
- B. Metadata management
- C. Query execution
- D. Query parsing and optimization
- E. Management of the storage layer

**Answer:** C

#### NEW QUESTION 147

- (Exam Topic 2)

What is the purpose of an External Function?

- A. To call code that executes outside of Snowflake
- B. To run a function in another Snowflake database
- C. To share data in Snowflake with external parties
- D. To ingest data from on-premises data sources

**Answer:** A

#### Explanation:

<https://docs.snowflake.com/en/sql-reference/external-functions.html>

#### NEW QUESTION 152

- (Exam Topic 2)

Which of the following conditions must be met in order to return results from the results cache? (Select TWO).

- A. The user has the appropriate privileges on the objects associated with the query
- B. Micro-partitions have been reclustered since the query was last run
- C. The new query is run using the same virtual warehouse as the previous query
- D. The query includes a User Defined Function (UDF)
- E. The query has been run within 24 hours of the previously-run query

**Answer:** AE

#### NEW QUESTION 155

- (Exam Topic 2)

Which command is used to unload data from a Snowflake table into a file in a stage?

- A. COPY INTO
- B. GET
- C. WRITE
- D. EXTRACT INTO

**Answer:** A

#### Explanation:

<https://docs.snowflake.com/en/user-guide/data-unload-snowflake.html#:~:text=Your%20User%20Stage-,Use%2>

#### NEW QUESTION 157

- (Exam Topic 2)

Which of the following can be executed/called with Snowpipe?

- A. A User Defined Function (UDF)
- B. A stored procedure
- C. A single copy\_into statement
- D. A single insert\_\_into statement

**Answer:** C

#### NEW QUESTION 160

- (Exam Topic 2)

Which semi-structured file formats are supported when unloading data from a table? (Select TWO).

- A. ORC
- B. XML
- C. Avro
- D. Parquet
- E. JSON

**Answer:** DE

#### Explanation:

Semi-structured JSON, Parquet

<https://docs.snowflake.com/en/user-guide/data-unload-prepare.html#:~:text=Supported%20File%20Formats,-Th>

#### NEW QUESTION 164

- (Exam Topic 2)

A user unloaded a Snowflake table called mytable to an internal stage called mystage. Which command can be used to view the list of files that has been uploaded to the staged?

- A. list @mytable;
- B. list @%raytable;
- C. list @ %m.ystage;
- D. list @mystage;

**Answer:** D

#### NEW QUESTION 168

- (Exam Topic 2)

What happens when a virtual warehouse is resized?

- A. When increasing the size of an active warehouse the compute resource for all running and queued queries on the warehouse are affected
- B. When reducing the size of a warehouse the compute resources are removed only when they are no longer being used to execute any current statements.
- C. The warehouse will be suspended while the new compute resource is provisioned and will resume automatically once provisioning is complete.
- D. Users who are trying to use the warehouse will receive an error message until the resizing is complete

**Answer:** B

#### NEW QUESTION 169

- (Exam Topic 2)

What data is stored in the Snowflake storage layer? (Select TWO).

- A. Snowflake parameters
- B. Micro-partitions
- C. Query history
- D. Persisted query results
- E. Standard and secure view results

**Answer:** BD

#### NEW QUESTION 174

- (Exam Topic 2)

Query compilation occurs in which architecture layer of the Snowflake Cloud Data Platform?

- A. Compute layer
- B. Storage layer
- C. Cloud infrastructure layer
- D. Cloud services layer

**Answer:** A

#### Explanation:

For query execution, Snowflake uses the Virtual Warehouse. The query processing layer is separated from the disk storage layer in the Snowflake data architecture. You can use the data from the storage layer to run queries in this layer

<https://www.projectpro.io/article/snowflake-architecture-what-does-snowflake-do/556#:~:text=Query%20Proce>

#### NEW QUESTION 178

- (Exam Topic 2)

A user has an application that writes a new Tile to a cloud storage location every 5 minutes. What would be the MOST efficient way to get the files into Snowflake?

- A. Create a task that runs a copy into operation from an external stage every 5 minutes
- B. Create a task that puts the files in an internal stage and automate the data loading wizard
- C. Create a task that runs a GET operation to intermittently check for new files
- D. Set up cloud provider notifications on the Tile location and use Snowpipe with auto-ingest

**Answer:** D

#### Explanation:

<https://docs.snowflake.com/en/user-guide/data-load-snowpipe-intro.html>

#### NEW QUESTION 183

- (Exam Topic 2)

What Snowflake role must be granted for a user to create and manage accounts?

- A. ACCOUNTADMIN
- B. ORGADMIN
- C. SECURITYADMIN
- D. SYSADMIN

**Answer:** A

#### Explanation:

<https://docs.snowflake.com/en/user-guide/security-access-control-considerations.html>

#### NEW QUESTION 184

- (Exam Topic 2)

The Information Schema and Account Usage Share provide storage information for which of the following objects? (Choose three.)

- A. Users
- B. Tables
- C. Databases
- D. Internal Stages

**Answer:** ABC

#### NEW QUESTION 186

- (Exam Topic 2)

True or False: Fail-safe can be disabled within a Snowflake account.

- A. True
- B. False

**Answer:** B

#### Explanation:

Reference: <https://docs.snowflake.com/en/user-guide/data-failsafe.html>

Separate and distinct from Time Travel, Fail-safe ensures historical data is protected in the event of a system failure or other catastrophic event, e.g. a hardware failure or security breach. Fail safe feature cannot be enabled or disabled from the user end .

#### NEW QUESTION 188

- (Exam Topic 2)

User-level network policies can be created by which of the following roles? (Select TWO).

- A. ROLEADMIN
- B. ACCOUNTADMIN
- C. SYSADMIN
- D. SECURITYADMIN
- E. USERADMIN

**Answer:** DE

#### Explanation:

By default, Snowflake allows users to connect to the service from any computer or device IP address. A security administrator (or higher) can create a network policy to allow or deny access to a single IP address or a list of addresses. Network policies currently support only Internet Protocol version 4 (i.e. IPv4) addresses. An administrator with sufficient permissions can create any number of network policies. [https://docs.snowflake.com/en/user-guide/network-policies.html#:~:text=A%20security%20administrator%20\(o](https://docs.snowflake.com/en/user-guide/network-policies.html#:~:text=A%20security%20administrator%20(o)

#### NEW QUESTION 193

- (Exam Topic 2)

Which data type can be used to store geospatial data in Snowflake?

- A. Variant
- B. Object
- C. Geometry
- D. Geography

**Answer:** D

#### Explanation:

<https://docs.snowflake.com/en/sql-reference/data-types-geospatial.html#:~:text=have%20SRID%3D4326.-,Geos>

#### NEW QUESTION 198

- (Exam Topic 2)

What is a key feature of Snowflake architecture?

- A. Zero-copy cloning creates a mirror copy of a database that updates with the original
- B. Software updates are automatically applied on a quarterly basis
- C. Snowflake eliminates resource contention with its virtual warehouse implementation
- D. Multi-cluster warehouses allow users to run a query that spans across multiple clusters
- E. Snowflake automatically sorts DATE columns during ingest for fast retrieval by date

**Answer:** D

#### NEW QUESTION 203

- (Exam Topic 2)

When is the result set cache no longer available? (Select TWO)

- A. When another warehouse is used to execute the query
- B. When another user executes the query
- C. When the underlying data has changed
- D. When the warehouse used to execute the query is suspended
- E. When it has been 24 hours since the last query

**Answer:** CE

#### NEW QUESTION 207

- (Exam Topic 2)

Which of the following indicates that it may be appropriate to use a clustering key for a table? (Select TWO).

- A. The table contains a column that has very low cardinality
- B. DML statements that are being issued against the table are blocked
- C. The table has a small number of micro-partitions
- D. Queries on the table are running slower than expected
- E. The clustering depth for the table is large

**Answer:** AE

#### NEW QUESTION 208

- (Exam Topic 2)

What are two ways to create and manage Data Shares in Snowflake? (Choose two.)

- A. Via the Snowflake Web Interface (UI)
- B. Via the data\_share=true parameter
- C. Via SQL commands
- D. Via Virtual Warehouses

**Answer:**

AC

**Explanation:**

Reference: <https://docs.snowflake.com/en/user-guide/data-sharing-provider.html>

**NEW QUESTION 213**

- (Exam Topic 2)

Which Snowflake feature is used for both querying and restoring data?

- A. Cluster keys
- B. Time Travel
- C. Fail-safe
- D. Cloning

**Answer:** B

**Explanation:**

[https://docs.snowflake.com/en/user-guide/data-availability.html#:~:text=Snowflake%20provides%20powerful%](https://docs.snowflake.com/en/user-guide/data-availability.html#:~:text=Snowflake%20provides%20powerful%20)

**NEW QUESTION 217**

- (Exam Topic 2)

What tasks can be completed using the copy command? (Select TWO)

- A. Columns can be aggregated
- B. Columns can be joined with an existing table
- C. Columns can be reordered
- D. Columns can be omitted
- E. Data can be loaded without the need to spin up a virtual warehouse

**Answer:** CD

**NEW QUESTION 220**

- (Exam Topic 3)

Which command should be used to load data from a file, located in an external stage, into a table in Snowflake?

- A. INSERT
- B. PUT
- C. GET
- D. COPY

**Answer:** D

**NEW QUESTION 225**

- (Exam Topic 3)

Which of the following is an example of an operation that can be completed without requiring compute, assuming no queries have been executed previously?

- A. SELECT SUM (ORDER\_AMT) FROM SALES;
- B. SELECT AVG(ORDER\_QTY) FROM SALES;
- C. SELECT MIN(ORDER\_AMT) FROM SALES;
- D. SELECT ORDER\_AMT \* ORDER\_QTY FROM SALES;

**Answer:** B

**NEW QUESTION 227**

- (Exam Topic 3)

Which of the following are handled by the cloud services layer of the Snowflake architecture? (Choose two.)

- A. Query execution
- B. Data loading
- C. Time Travel data
- D. Security
- E. Authentication and access control

**Answer:** BD

**NEW QUESTION 228**

- (Exam Topic 3)

When cloning a database, what is cloned with the database? (Choose two.)

- A. Privileges on the database
- B. Existing child objects within the database
- C. Future child objects within the database
- D. Privileges on the schemas within the database
- E. Only schemas and tables within the database

**Answer:** BE



#### NEW QUESTION 229

- (Exam Topic 3)

The is the minimum Fail-safe retention time period for transient tables?

- A. 1 day
- B. 7 days
- C. 12 hours
- D. 0 days

**Answer:** D

#### NEW QUESTION 232

- (Exam Topic 3)

What happens to the shared objects for users in a consumer account from a share, once a database has been created in that account?

- A. The shared objects are transferred.
- B. The shared objects are copied.
- C. The shared objects become accessible.
- D. The shared objects can be re-shared.

**Answer:** B

#### NEW QUESTION 233

- (Exam Topic 3)

How many days is load history for Snowpipe retained?

- A. 1 day
- B. 7 days
- C. 14 days
- D. 64 days

**Answer:** C

#### NEW QUESTION 236

- (Exam Topic 3)

Which of the following activities consume virtual warehouse credits in the Snowflake environment? (Choose two.)

- A. Caching query results
- B. Running EXPLAIN and SHOW commands
- C. Cloning a database
- D. Running a custom query
- E. Running COPY commands

**Answer:** AD

#### NEW QUESTION 237

- (Exam Topic 3)

A materialized view should be created when which of the following occurs? (Choose two.)

- A. There is minimal cost associated with running the query.
- B. The query consumes many compute resources every time it runs.
- C. The base table gets updated frequently.
- D. The query is highly optimized and does not consume many compute resources.
- E. The results of the query do not change often and are used frequently.

**Answer:** CE

#### NEW QUESTION 241

- (Exam Topic 3)

Which of the following is the Snowflake Account\_Usage.Metering\_History view used for?

- A. Gathering the hourly credit usage for an account
- B. Compiling an account's average cloud services cost over the previous month
- C. Summarizing the throughput of Snowpipe costs for an account
- D. Calculating the funds left on an account's contract

**Answer:** A

#### NEW QUESTION 246

- (Exam Topic 3)

What is the MINIMUM Snowflake edition required to use the periodic rekeying of micro-partitions?

- A. Enterprise
- B. Business Critical
- C. Standard
- D. Virtual Private Snowflake

**Answer:** B

**Explanation:**

Reference: <https://docs.snowflake.com/en/user-guide/intro-editions.html#business-critical-edition>

**NEW QUESTION 250**

- (Exam Topic 3)

Which feature allows a user the ability to control the organization of data in a micro-partition?

- A. Range Partitioning
- B. Search Optimization Service
- C. Automatic Clustering
- D. Horizontal Partitioning

**Answer:** D

**NEW QUESTION 252**

- (Exam Topic 3)

How often are the Account and Table master keys automatically rotated by Snowflake?

- A. 30 Days
- B. 60 Days
- C. 90 Days
- D. 365 Days.

**Answer:** D

**NEW QUESTION 257**

- (Exam Topic 3)

Which statement MOST accurately describes clustering in Snowflake?

- A. The database ACCOUNTADMIN must define the clustering methodology for each Snowflake table.
- B. Clustering is the way data is grouped together and stored within Snowflake micro-partitions.
- C. The clustering key must be included in the COPY command when loading data into Snowflake.
- D. Clustering can be disabled within a Snowflake account.

**Answer:** B

**NEW QUESTION 260**

- (Exam Topic 3)

If a Snowflake user decides a table should be clustered, what should be used as the cluster key?

- A. The columns that are queried in the select clause.
- B. The columns with very high cardinality.
- C. The columns with many different values.
- D. The columns most actively used in the select filters.

**Answer:** D

**NEW QUESTION 265**

- (Exam Topic 3)

Which query profile statistics help determine if efficient pruning is occurring? (Choose two.)

- A. Bytes sent over network
- B. Percentage scanned from cache
- C. Partitions total
- D. Bytes spilled to local storage
- E. Partitions scanned

**Answer:** BE

**NEW QUESTION 267**

- (Exam Topic 3)

Which of the following are considerations when using a directory table when working with unstructured data? (Choose two.)

- A. A directory table is a separate database object.
- B. Directory tables store data file metadata.
- C. A directory table will be automatically added to a stage.
- D. Directory tables do not have their own grantable privileges.
- E. Directory table data can not be refreshed manually.

**Answer:** BD

**NEW QUESTION 272**

- (Exam Topic 3)



Credit charges for Snowflake virtual warehouses are calculated based on which of the following considerations? (Choose two.)

- A. The number of queries executed
- B. The number of active users assigned to the warehouse
- C. The size of the virtual warehouse
- D. The length of time the warehouse is running
- E. The duration of the queries that are executed

**Answer:** AD

#### NEW QUESTION 273

- (Exam Topic 3)

How can a row access policy be applied to a table or a view? (Choose two.)

- A. Within the policy DDL
- B. Within the create table or create view DDL
- C. By future APPLY for all objects in a schema
- D. Within a control table
- E. Using the command ALTER <object> ADD ROW ACCESS POLICY <policy>;

**Answer:** BD

#### NEW QUESTION 274

- (Exam Topic 3)

Which of the following are characteristics of security in Snowflake?

- A. Account and user authentication is only available with the Snowflake Business Critical edition.
- B. Support for HIPAA and GDPR compliance is available for UI Snowflake editions.
- C. Periodic rekeying of encrypted data is available with the Snowflake Enterprise edition and higher
- D. Private communication to internal stages is allowed in the Snowflake Enterprise edition and higher.

**Answer:** C

#### NEW QUESTION 276

- (Exam Topic 3)

Which stages are used with the Snowflake PUT command to upload files from a local file system? (Choose three.)

- A. Schema Stage
- B. User Stage
- C. Database Stage
- D. Table Stage
- E. External Named Stage
- F. Internal Named Stage

**Answer:** AEF

#### NEW QUESTION 279

- (Exam Topic 3)

Which Snowflake objects can be shared with other Snowflake accounts? (Choose three.)

- A. Schemas
- B. Roles
- C. Secure Views
- D. Stored Procedures
- E. Tables
- F. Secure User-Defined Functions (UDFs)

**Answer:** ABF

#### NEW QUESTION 281

- (Exam Topic 3)

When publishing a Snowflake Data Marketplace listing into a remote region what should be taken into consideration? (Choose two.)

- A. There is no need to have a Snowflake account in the target region, a share will be created for each user.
- B. The listing is replicated into all selected regions automatically, the data is not.
- C. The user must have the ORGADMIN role available in at least one account to link accounts for replication.
- D. Shares attached to listings in remote regions can be viewed from any account in an organization.
- E. For a standard listing the user can wait until the first customer requests the data before replicating it to the target region.

**Answer:** AC

#### NEW QUESTION 285

- (Exam Topic 3)

A company needs to allow some users to see Personally Identifiable Information (PII) while limiting other users from seeing the full value of the PII. Which Snowflake feature will support this?

- A. Row access policies

- B. Data masking policies
- C. Data encryption
- D. Role based access control

**Answer:** B

#### NEW QUESTION 289

- (Exam Topic 3)

Which SQL command can be used to see the CREATE definition of a masking policy?

- A. SHOW MASKING POLICIES
- B. DESCRIBE MASKING POLICY
- C. GET\_DDL
- D. LIST MASKING POLICIES

**Answer:** C

#### NEW QUESTION 291

- (Exam Topic 3)

Which of the following can be used when unloading data from Snowflake? (Choose two.)

- A. When unloading semi-structured data, it is recommended that the STRIP\_OUTER\_ARRAY option be used.
- B. Use the ENCODING file format option to change the encoding from the default UTF-8.
- C. The OBJECT\_CONSTRUCT function can be used to convert relational data to semi-structured data.
- D. By using the SINGLE = TRUE parameter, a single file up to 5 GB in size can be exported to the storage layer.
- E. Use the PARSE\_JSON function to ensure structured data will be unloaded into the VARIANT data type.

**Answer:** AD

#### NEW QUESTION 293

- (Exam Topic 3)

Which of the following accurately describes shares?

- A. Tables, secure views, and secure UDFs can be shared
- B. Shares can be shared
- C. Data consumers can clone a new table from a share
- D. Access to a share cannot be revoked once granted

**Answer:** A

#### NEW QUESTION 298

- (Exam Topic 3)

What is a responsibility of Snowflake's virtual warehouses?

- A. Infrastructure management
- B. Metadata management
- C. Query execution
- D. Query parsing and optimization
- E. Permanent storage of micro-partitions

**Answer:** C

#### Explanation:

Reference:

<https://docs.snowflake.com/en/user-guide/warehouses.html#:~:text=A%20warehouse%20provides%20the%20re>

#### NEW QUESTION 302

- (Exam Topic 3)

What are common issues found by using the Query Profile? (Choose two.)

- A. Identifying queries that will likely run very slowly before executing them
- B. Locating queries that consume a high amount of credits
- C. Identifying logical issues with the queries
- D. Identifying inefficient micro-partition pruning
- E. Data spilling to a local or remote disk

**Answer:** AD

#### NEW QUESTION 304

- (Exam Topic 3)

Which command can be used to load data files into a Snowflake stage?

- A. JOIN
- B. COPY INTO
- C. PUT
- D. GET

Answer: C

#### NEW QUESTION 308

- (Exam Topic 3)

Which minimum Snowflake edition allows for a dedicated metadata store?

- A. Standard
- B. Enterprise
- C. Business Critical
- D. Virtual Private Snowflake

Answer: D

#### Explanation:

Reference: <https://docs.snowflake.com/en/user-guide/intro-editions.html>

#### NEW QUESTION 311

- (Exam Topic 3)

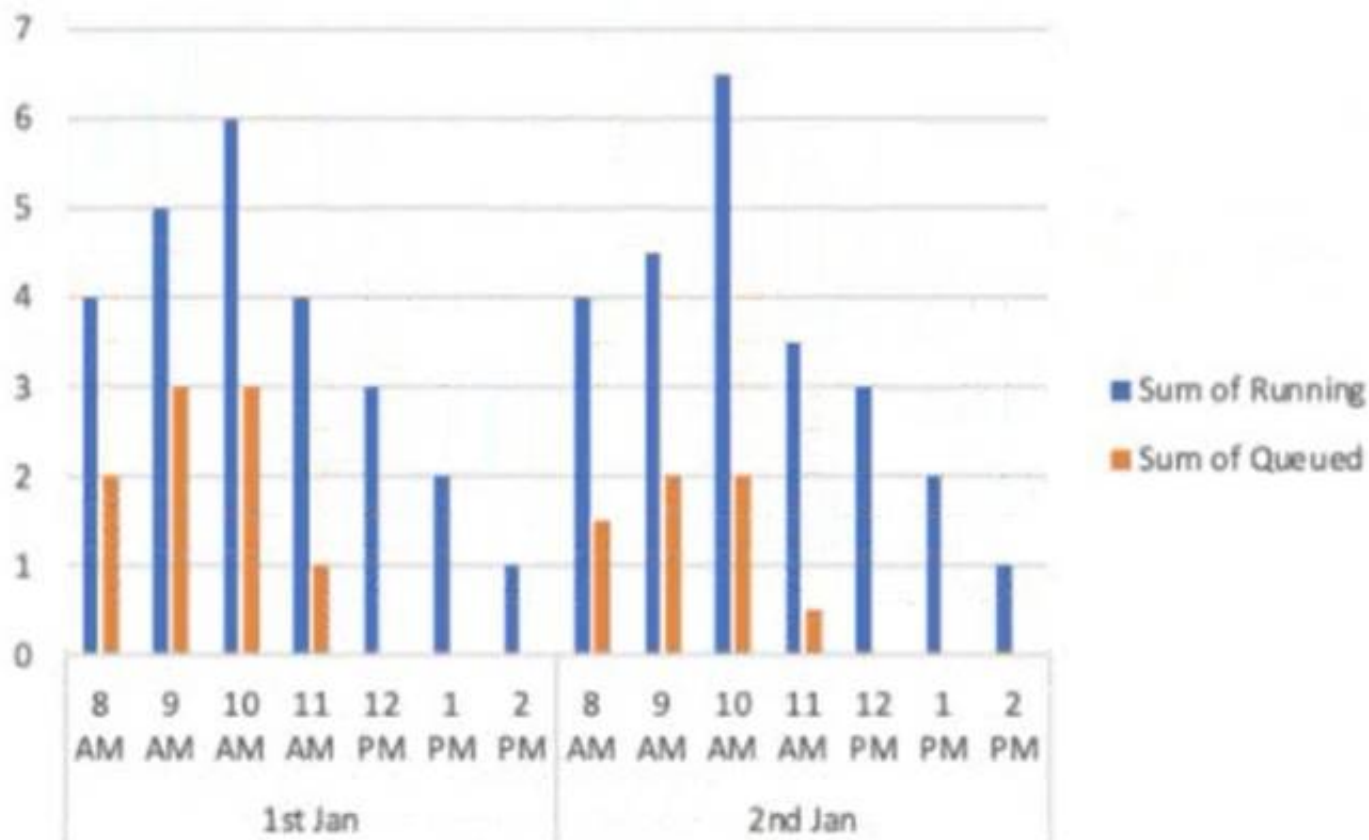
A virtual warehouse is created using the following command:

Create warehouse my\_WH with warehouse\_size = MEDIUM min\_cluster\_count = 1

max\_cluster\_count = 1

auto\_suspend = 60 auto\_resume = true;

The image below is a graphical representation of the warehouse utilization across two days.



What action should be taken to address this situation?

- A. Increase the warehouse size from Medium to 2XL.
- B. Increase the value for the parameter MAX\_CONCURRENCY\_LEVEL.
- C. Configure the warehouse to a multi-cluster warehouse.
- D. Lower the value of the parameter STATEMENT\_QUEUED\_TIMEOUT\_IN\_SECONDS.

Answer: B

#### NEW QUESTION 312

- (Exam Topic 3)

A Snowflake Administrator needs to ensure that sensitive corporate data in Snowflake tables is not visible to end users, but is partially visible to functional managers.

How can this requirement be met?

- A. Use data encryption.
- B. Use dynamic data masking.
- C. Use secure materialized views.
- D. Revoke all roles for functional managers and end users.

Answer: B

#### NEW QUESTION 316

- (Exam Topic 3)

Which of the following practices are recommended when creating a user in Snowflake? (Choose two.)

- A. Configure the user to be initially disabled.
- B. Force an immediate password change.
- C. Set a default role for the user.
- D. Set the number of minutes to unlock to 15 minutes.

E. Set the user's access to expire within a specified timeframe.

**Answer:** AE

#### NEW QUESTION 317

- (Exam Topic 3)

Which TABLE function helps to convert semi-structured data to a relational representation?

- A. CHECK\_JSON
- B. TO\_JSON
- C. FLATTEN
- D. PARSE\_JSON

**Answer:** D

#### NEW QUESTION 322

- (Exam Topic 3)

Which of the following objects can be directly restored using the UNDROP command? (Choose two.)

- A. Schema
- B. View
- C. Internal stage
- D. Table
- E. User
- F. Role

**Answer:** AD

#### NEW QUESTION 326

- (Exam Topic 3)

What privilege should a user be granted to change permissions for new objects in a managed access schema?

- A. Grant the OWNERSHIP privilege on the schema.
- B. Grant the OWNERSHIP privilege on the database.
- C. Grant the MANAGE GRANTS global privilege.
- D. Grant ALL privileges on the schema.

**Answer:** C

#### NEW QUESTION 331

- (Exam Topic 3)

Which file formats are supported for unloading data from Snowflake? (Choose two.)

- A. Avro
- B. JSON
- C. ORC
- D. XML
- E. Delimited (CSV, TSV, etc.)

**Answer:** CE

#### Explanation:

Reference:

[https://docs.snowflake.com/en/user-guide/data-unload-prepare.html#:~:text=Supported%20File%20Formats,-Th%20comma%20\(i.e.%20CSV\).&text=File%20format%20options%20specify%20the,the%20format%20of%20th](https://docs.snowflake.com/en/user-guide/data-unload-prepare.html#:~:text=Supported%20File%20Formats,-Th%20comma%20(i.e.%20CSV).&text=File%20format%20options%20specify%20the,the%20format%20of%20th)

#### NEW QUESTION 335

- (Exam Topic 3)

What are advantages clones have over tables created with CREATE TABLE AS SELECT statement? (Choose two.)

- A. The clone always stays in sync with the original table.
- B. The clone has better query performance.
- C. The clone is created almost instantly.
- D. The clone will have time travel history from the original table.
- E. The clone saves space by not duplicating storage.

**Answer:** CE

#### NEW QUESTION 340

- (Exam Topic 3)

Which of the following are best practices for loading data into Snowflake? (Choose three.)

- A. Aim to produce data files that are between 100 MB and 250 MB in size, compressed.
- B. Load data from files in a cloud storage service in a different region or cloud platform from the service or region containing the Snowflake account, to save on cost.
- C. Enclose fields that contain delimiter characters in single or double quotes.
- D. Split large files into a greater number of smaller files to distribute the load among the compute resources in an active warehouse.

- E. When planning which warehouse(s) to use for data loading, start with the largest warehouse possible.
- F. Partition the staged data into large folders with random paths, allowing Snowflake to determine the bestway to load each file.

**Answer:** BCE

#### NEW QUESTION 341

- (Exam Topic 3)

How would a user run a multi-cluster warehouse in maximized mode?

- A. Configure the maximum clusters setting to "Maximum."
- B. Turn on the additional clusters manually after starting the warehouse.
- C. Set the minimum Clusters and maximum Clusters settings to the same value.
- D. Set the minimum clusters and maximum clusters settings to different values.

**Answer:** D

#### NEW QUESTION 343

- (Exam Topic 3)

Which Snowflake layer is always leveraged when accessing a query from the result cache?

- A. Metadata
- B. Data Storage
- C. Compute
- D. Cloud Services

**Answer:** D

#### NEW QUESTION 348

- (Exam Topic 3)

Which parameter can be used to instruct a COPY command to verify data files instead of loading them into a specified table?

- A. STRIP\_NULL\_VALUES
- B. SKIP\_BYTE\_ORDER\_MARK
- C. REPLACE\_INVALID\_CHARACTERS
- D. VALIDATION\_MODE

**Answer:** D

#### Explanation:

<https://docs.snowflake.com/en/sql-reference/sql/copy-into-table.html>

VALIDATION\_MODE = RETURN\_ROWS | RETURN\_ERRORS | RETURN\_ALL\_ERRORS

String (constant) that instructs the COPY command to validate the data files instead of loading them into the

specified table; i.e. the COPY command tests the files for errors but does not load them. The command validates the data to be loaded and returns results based on the validation option specified:

#### NEW QUESTION 349

- (Exam Topic 3)

Which Snowflake feature will allow small volumes of data to continuously load into Snowflake and will incrementally make the data available for analysis?

- A. COPY INTO
- B. CREATE PIPE
- C. INSERT INTO
- D. TABLE STREAM

**Answer:** B

#### NEW QUESTION 354

- (Exam Topic 3)

A table needs to be loaded. The input data is in JSON format and is a concatenation of multiple JSON documents. The file size is 3 GB. A warehouse size small is being used. The following COPY INTO command was executed:

COPY INTO SAMPLE FROM @~/SAMPLE.JSON (TYPE=JSON)

The load failed with this error:

Max LOB size (16777216) exceeded, actual size of parsed column is 17894470. How can this issue be resolved?

- A. Compress the file and load the compressed file.
- B. Split the file into multiple files in the recommended size range (100 MB - 250 MB).
- C. Use a larger-sized warehouse.
- D. Set STRIP\_OUTER\_ARRAY=TRUE in the COPY INTO command.

**Answer:** A

#### NEW QUESTION 356

- (Exam Topic 3)

Which commands should be used to grant the privilege allowing a role to select data from all current tables and any tables that will be created later in a schema? (Choose two.)

- A. grant USAGE on all tables in schema DB1.SCHEMA to role MYROLE;
- B. grant USAGE on future tables in schema DB1.SCHEMA to role MYROLE;
- C. grant SELECT on all tables in schema DB1.SCHEMA to role MYROLE;
- D. grant SELECT on future tables in schema DB1.SCHEMA to role MYROLE;
- E. grant SELECT on all tables in database DB1 to role MYROLE;
- F. grant SELECT on future tables in database DB1 to role MYROLE;

**Answer:** CD

#### NEW QUESTION 357

- (Exam Topic 3)

When should a multi-cluster warehouse be used in auto-scaling mode?

- A. When it is unknown how much compute power is needed
- B. If the select statement contains a large number of temporary tables or Common Table Expressions (CTEs)
- C. If the runtime of the executed query is very slow
- D. When a large number of concurrent queries are run on the same warehouse

**Answer:** D

#### NEW QUESTION 362

- (Exam Topic 3)

Which of the following objects are contained within a schema? (Choose two.)

- A. Role
- B. Stream
- C. Warehouse
- D. External table
- E. User
- F. Share

**Answer:** CD

#### NEW QUESTION 365

- (Exam Topic 3)

What impacts the credit consumption of maintaining a materialized view? (Choose two.)

- A. Whether or not it is also a secure view
- B. How often the underlying base table is queried
- C. How often the base table changes
- D. Whether the materialized view has a cluster key defined
- E. How often the materialized view is queried

**Answer:** DE

#### NEW QUESTION 367

- (Exam Topic 3)

Which Snowflake tool would be BEST to troubleshoot network connectivity?

- A. SnowCLI
- B. SnowUI
- C. SnowSQL
- D. SnowCD

**Answer:** D

#### Explanation:

[https://docs.snowflake.com/en/user-guide/snowcd.html#:~:text=SnowCD%20\(i.e.%20Snowflake%20Connectivi](https://docs.snowflake.com/en/user-guide/snowcd.html#:~:text=SnowCD%20(i.e.%20Snowflake%20Connectivi)

#### NEW QUESTION 368

- (Exam Topic 3)

What file formats does Snowflake support for loading semi-structured data? (Choose three.)

- A. TSV
- B. JSON
- C. PDF
- D. Avro
- E. Parquet
- F. JPEG

**Answer:** BDE

#### NEW QUESTION 370

- (Exam Topic 3)

What types of data listings are available in the Snowflake Data Marketplace? (Choose two.)

- A. Reader



- B. Consumer
- C. Vendor
- D. Standard
- E. Personalized

**Answer:** DE

#### NEW QUESTION 372

- (Exam Topic 3)

Which of the following statements describes a schema in Snowflake?

- A. A logical grouping of objects that belongs to a single database
- B. A logical grouping of objects that belongs to multiple databases
- C. A named Snowflake object that includes all the information required to share a database
- D. A uniquely identified Snowflake account within a business entity

**Answer:** A

#### NEW QUESTION 375

- (Exam Topic 3)

How does Snowflake allow a data provider with an Azure account in central Canada to share data with a data consumer on AWS in Australia?

- A. The data provider in Azure Central Canada can create a direct share to AWS Asia Pacific, if they are both in the same organization.
- B. The data consumer and data provider can form a Data Exchange within the same organization to create a share from Azure Central Canada to AWS Asia Pacific.
- C. The data provider uses the GET DATA workflow in the Snowflake Data Marketplace to create a share between Azure Central Canada and AWS Asia Pacific.
- D. The data provider must replicate the database to a secondary account in AWS Asia Pacific within the same organization then create a share to the data consumer's account.

**Answer:** C

#### NEW QUESTION 378

- (Exam Topic 3)

For non-materialized views, what column in Information Schema and Account Usage identifies whether a view is secure or not?

- A. CHECK\_OPTION
- B. IS\_SECURE
- C. IS\_UPDATEABLE
- D. TABLE\_NAME

**Answer:** B

#### NEW QUESTION 383

- (Exam Topic 3)

Data storage for individual tables can be monitored using which commands and/or objects? (Choose two.)

- A. SHOW STORAGE BY TABLE;
- B. SHOW TABLES;
- C. Information Schema -> TABLE\_HISTORY
- D. Information Schema -> TABLE\_FUNCTION
- E. Information Schema -> TABLE\_STORAGE\_METRICS

**Answer:** AE

#### NEW QUESTION 386

- (Exam Topic 3)

Which of the following features are available with the Snowflake Enterprise edition? (Choose two.)

- A. Database replication and failover
- B. Automated index management
- C. Customer managed keys (Tri-secret secure)
- D. Extended time travel
- E. Native support for geospatial data

**Answer:** AD

#### NEW QUESTION 391

- (Exam Topic 3)

Using variables in Snowflake is denoted by using which SQL character?

- A. @
- B. &
- C. \$
- D. #

**Answer:** C

NEW QUESTION 396  
.....



## Thank You for Trying Our Product

### We offer two products:

1st - We have Practice Tests Software with Actual Exam Questions

2nd - Questions and Answers in PDF Format

### SnowPro-Core Practice Exam Features:

- \* SnowPro-Core Questions and Answers Updated Frequently
- \* SnowPro-Core Practice Questions Verified by Expert Senior Certified Staff
- \* SnowPro-Core Most Realistic Questions that Guarantee you a Pass on Your FirstTry
- \* SnowPro-Core Practice Test Questions in Multiple Choice Formats and Updatesfor 1 Year

**100% Actual & Verified — Instant Download, Please Click**  
**[Order The SnowPro-Core Practice Test Here](#)**