



Cisco

Exam Questions 300-730

Implementing Secure Solutions with Virtual Private Networks (SVPN)

About Exambible

[Your Partner of IT Exam](#)

Found in 1998

Exambible is a company specialized on providing high quality IT exam practice study materials, especially Cisco CCNA, CCDA, CCNP, CCIE, Checkpoint CCSE, CompTIA A+, Network+ certification practice exams and so on. We guarantee that the candidates will not only pass any IT exam at the first attempt but also get profound understanding about the certificates they have got. There are so many alike companies in this industry, however, Exambible has its unique advantages that other companies could not achieve.

Our Advances

* 99.9% Uptime

All examinations will be up to date.

* 24/7 Quality Support

We will provide service round the clock.

* 100% Pass Rate

Our guarantee that you will pass the exam.

* Unique Gurantee

If you do not pass the exam at the first time, we will not only arrange FULL REFUND for you, but also provide you another exam of your claim, ABSOLUTELY FREE!

NEW QUESTION 1

On a FlexVPN hub-and-spoke topology where spoke-to-spoke tunnels are not allowed, which command is needed for the hub to be able to terminate FlexVPN tunnels?

- A. interface virtual-access
- B. ip nhrp redirect
- C. interface tunnel
- D. interface virtual-template

Answer: D

NEW QUESTION 2

Which statement about GETVPN is true?

- A. The configuration that defines which traffic to encrypt originates from the key server.
- B. TEK rekeys can be load-balanced between two key servers operating in COOP.
- C. The pseudotime that is used for replay checking is synchronized via NTP.
- D. Group members must acknowledge all KEK and TEK rekeys, regardless of configuration.

Answer: A

NEW QUESTION 3

Which two changes must be made in order to migrate from DMVPN Phase 2 to Phase 3 when EIGRP is configured? (Choose two.)

- A. Add NHRP shortcuts on the hub.
- B. Add NHRP redirects on the spoke.
- C. Disable EIGRP next-hop-self on the hub.
- D. Enable EIGRP next-hop-self on the hub.
- E. Add NHRP redirects on the hub.

Answer: CE

NEW QUESTION 4

Which method dynamically installs the network routes for remote tunnel endpoints?

- A. policy-based routing
- B. CEF
- C. reverse route injection
- D. route filtering

Answer: C

Explanation:

Reference: https://www.cisco.com/c/en/us/td/docs/ios-xml/ios/sec_conn_vpnnav/configuration/12-4t/sec-vpn-availability-12-4t-book/sec-rev-rte-inject.html

NEW QUESTION 5

Which command identifies a Cisco AnyConnect profile that was uploaded to the flash of an IOS router?

- A. svc import profile SSL_profile flash:simos-profile.xml
- B. anyconnect profile SSL_profile flash:simos-profile.xml
- C. crypto vpn anyconnect profile SSL_profile flash:simos-profile.xml
- D. webvpn import profile SSL_profile flash:simos-profile.xml

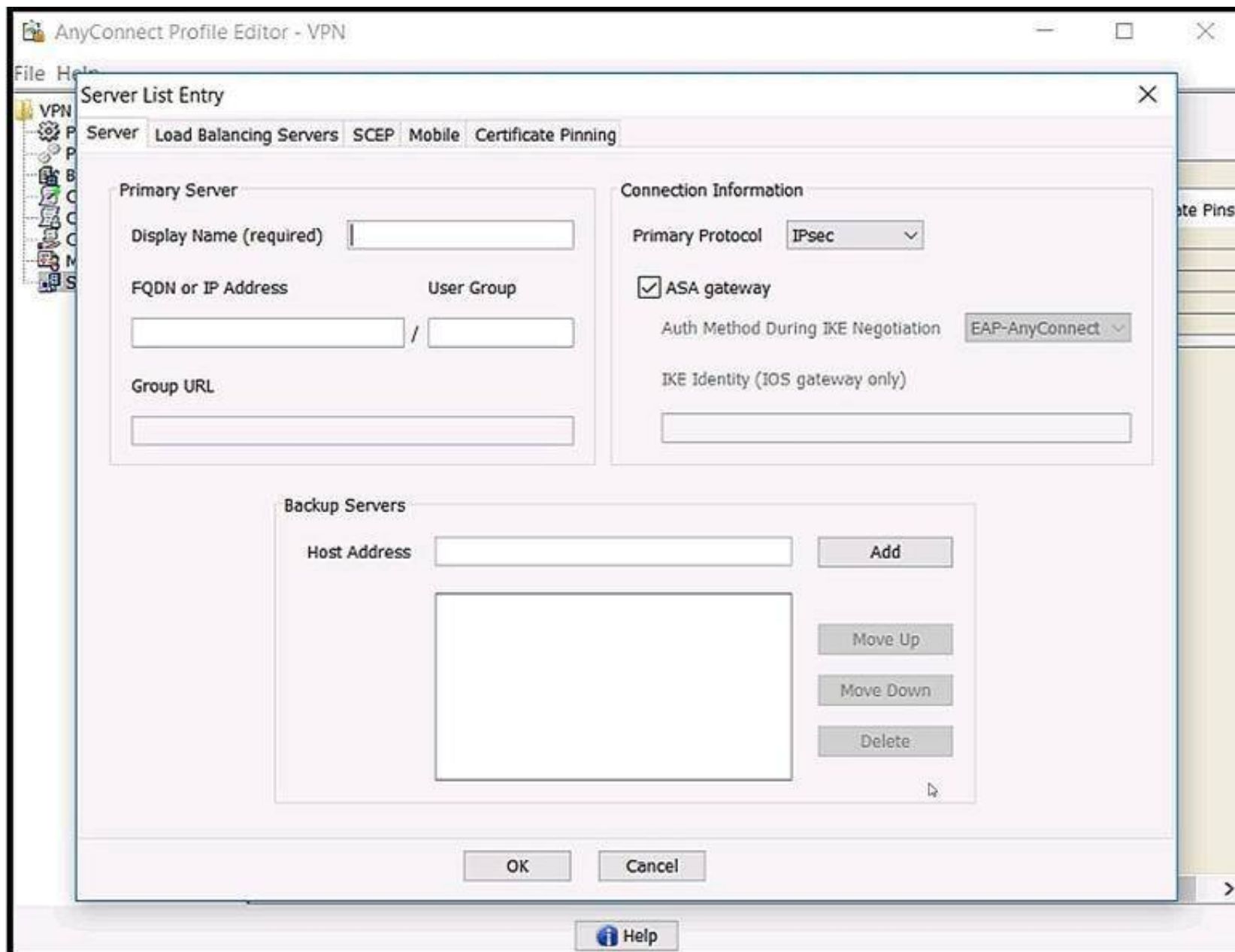
Answer: C

Explanation:

Reference: <https://www.cisco.com/c/en/us/support/docs/security/anyconnect-secure-mobility-client/200533-AnyConnect-Configure-Basic-SSLVPN-for-I.html>

NEW QUESTION 6

Refer to the exhibit.



Which value must be configured in the User Group field when the Cisco AnyConnect Profile is created to connect to an ASA headend with IPsec as the primary protocol?

- A. address-pool
- B. group-alias
- C. group-policy
- D. tunnel-group

Answer: D

Explanation:

Reference: https://www.cisco.com/c/en/us/td/docs/security/vpn_client/anyconnect/anyconnect41/administration/guide/b_AnyConnect_Administrator_Guide_4-1/configure-vpn.html

NEW QUESTION 7

Refer to the exhibit.

```
aaa new-model
!
aaa authorization network local-group-author-list local
!
crypto pki trustpoint trustpoint1
  enrollment url http://192.168.3.1:80
  revocation-check crl
!
crypto pki certificate map certmap1 1
  subject-name co cisco
!
crypto ikev2 authorization policy author-policy1
  ipv6 pool v6-pool
  ipv6 dns 2001:DB8:1::11 2001:DB8:1::12
  ipv6 subnet-acl v6-acl
!
crypto ikev2 profile ikev2-profile1
  match certificate certmap1
  authentication local rsa-sig
  authentication remote rsa-sig
  pki trustpoint trustpoint1
  aaa authorization group cert list local-group-author-list
author-policy1
  virtual-template 1
!
crypto ipsec transform-set transform1 esp-aes esp-sha-hmac
!
crypto ipsec profile ipsec-profile1
  set transform-set trans transform1
  set ikev2-profile ikev2-profile1
!
interface Ethernet0/0
  ipv6 address 2001:DB8:1::1/32
!
interface Virtual-Template1 type tunnel
  ipv6 unnumbered Ethernet0/0
  tunnel mode ipsec ipv6
  tunnel protection ipsec profile ipsec-profile1
!
ipv6 local pool v6-pool 2001:DB8:1::10/32 48
!
ipv6 access-list v6-acl
  permit ipv6 host 2001:DB8:1::20 any
  permit ipv6 host 2001:DB8:1::30 any
```

What is configured as a result of this command set?

- A. FlexVPN client profile for IPv6
- B. FlexVPN server to authorize groups by using an IPv6 external AAA
- C. FlexVPN server for an IPv6 dVTI session
- D. FlexVPN server to authenticate IPv6 peers by using EAP

Answer: A

Explanation:

Reference: https://www.cisco.com/c/en/us/td/docs/ios-xml/ios/sec_conn_ike2vpn/configuration/xr-3s/sec-flex-vpn-xr-3s-book/sec-cfg-flex-clnt.html

NEW QUESTION 8

A Cisco AnyConnect client establishes a SSL VPN connection with an ASA at the corporate office. An engineer must ensure that the client computer meets the enterprise security policy. Which feature can update the client to meet an enterprise security policy?

- A. Endpoint Assessment
- B. Cisco Secure Desktop
- C. Basic Host Scan
- D. Advanced Endpoint Assessment

Answer: D

NEW QUESTION 9

Which two features provide headend resiliency for Cisco AnyConnect clients? (Choose two.)

- A. AnyConnect Auto Reconnect
- B. AnyConnect Network Access Manager
- C. AnyConnect Backup Servers
- D. ASA failover
- E. AnyConnect Always On

Answer: CD

NEW QUESTION 10

Which two statements about the Cisco ASA Clientless SSL VPN solution are true? (Choose two.)

- A. When a client connects to the Cisco ASA WebVPN portal and tries to access HTTP resources through the URL bar, the client uses the local DNS to perform FQDN resolution.
- B. The `rewriter enable` command under the global `webvpn` configuration enables the rewriter functionality because that feature is disabled by default.
- C. A Cisco ASA can simultaneously allow Clientless SSL VPN sessions and AnyConnect client sessions.
- D. When a client connects to the Cisco ASA WebVPN portal and tries to access HTTP resources through the URL bar, the ASA uses its configured DNS servers to perform FQDN resolution.
- E. Clientless SSLVPN provides Layer 3 connectivity into the secured network.

Answer: CD

NEW QUESTION 10

Which command is used to troubleshoot an IPv6 FlexVPN spoke-to-hub connectivity failure?

- A. `show crypto ikev2 sa`
- B. `show crypto isakmp sa`
- C. `show crypto gkm`
- D. `show crypto identity`

Answer: A

Explanation:

Reference: <https://www.cisco.com/c/en/us/support/docs/security/flexvpn/116413-configure-flexvpn-00.pdf>

NEW QUESTION 11

In a FlexVPN deployment, the spokes successfully connect to the hub, but spoke-to-spoke tunnels do not form. Which troubleshooting step solves the issue?

- A. Verify the spoke configuration to check if the NHRP redirect is enabled.
- B. Verify that the spoke receives redirect messages and sends resolution requests.
- C. Verify the hub configuration to check if the NHRP shortcut is enabled.
- D. Verify that the tunnel interface is contained within a VRF.

Answer: B

Explanation:

Reference: https://www.cisco.com/c/en/us/td/docs/ios-xml/ios/sec_conn_dmvpn/configuration/15-mt/sec-conn-dmvpn-15-mt-book/sec-conn-dmvpn-summaps.pdf

NEW QUESTION 16

Refer to the exhibit.

```
*Jul 16 20:21:25.317: ISAKMP (1004): received packet from 192.168.0.2 dport
500 sport 500 Global (R) MM_KEY_EXCH
*Jul 16 20:21:25.317: ISAKMP: reserved not zero on ID payload!
*Jul 16 20:21:25.317: %CRYPTO-4-IKMP_BAD_MESSAGE: IKE message from 192.168.0.2
failed its sanity check or is malformed
```

Which type of mismatch is causing the problem with the IPsec VPN tunnel?

- A. crypto access list
- B. Phase 1 policy
- C. transform set
- D. preshared key

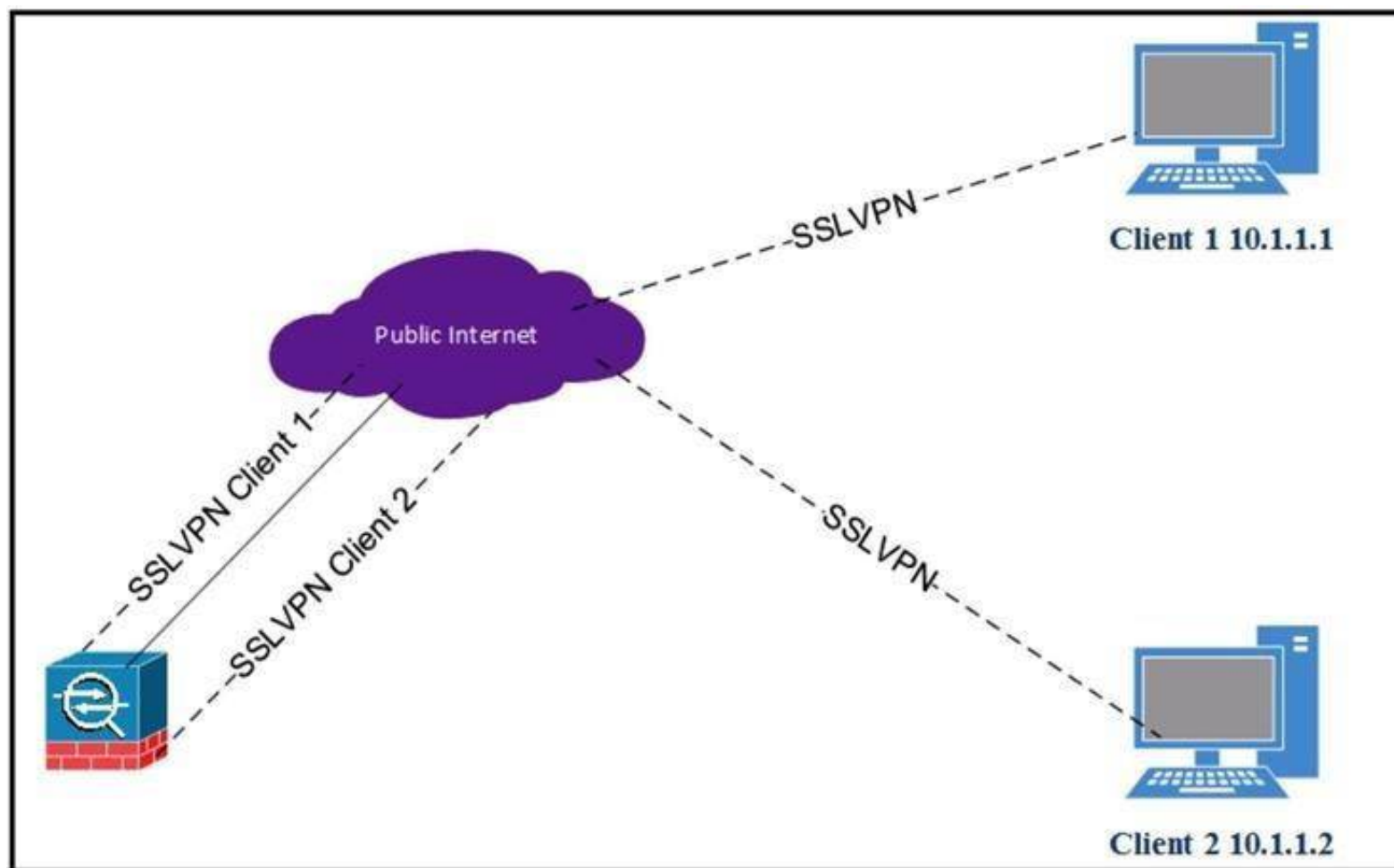
Answer: D

Explanation:

Reference: <https://www.cisco.com/c/en/us/support/docs/security-vpn/ipsec-negotiation-ike-protocols/5409-ipsec-debug-00.html#ike>

NEW QUESTION 20

Refer to the exhibit.



Client 1 cannot communicate with client 2. Both clients are using Cisco AnyConnect and have established a successful SSL VPN connection to the hub ASA. Which command on the ASA is missing?

- A. dns-server value 10.1.1.2
- B. same-security-traffic permit intra-interface
- C. same-security-traffic permit inter-interface
- D. dns-server value 10.1.1.3

Answer: B

NEW QUESTION 24

Refer to the exhibit.

An SSL client is connecting to an ASA headend. The session fails with the message "Connection attempt has timed out. Please verify Internet connectivity." Based on how the packet is processed, which phase is causing the failure?

- A. phase 9: rpf-check
- B. phase 5: NAT
- C. phase 4: ACCESS-LIST
- D. phase 3: UN-NAT

Answer: D

NEW QUESTION 28

Which technology works with IPsec stateful failover?

- A. GLBR
- B. HSRP
- C. GRE
- D. VRRP

Answer: B

Explanation:

Reference: https://www.cisco.com/c/en/us/td/docs/ios/12_2/12_2y/12_2yx11/feature/guide/ft_vpnha.html#wp1122512

NEW QUESTION 33

What uses an Elliptic Curve key exchange algorithm?

- A. ECDSA
- B. ECDHE
- C. AES-GCM
- D. SHA

Answer: B

Explanation:

Reference: <https://blog.cloudflare.com/a-relatively-easy-to-understand-primer-on-elliptic-curve-cryptography/>

NEW QUESTION 35

Which VPN solution uses TBAR?

- A. GETVPN
- B. VTI
- C. DMVPN
- D. Cisco AnyConnect

Answer: A

Explanation:

Reference: https://www.cisco.com/c/en/us/td/docs/ios-xml/ios/sec_conn_getvpn/configuration/x3/sec-get-vpn-x3-book/sec-get-vpn.html

NEW QUESTION 37

Refer to the exhibit.

```
crypto isakmp policy 10
  encr aes 256
  hash sha256
  authentication pre-share
  group 14

crypto isakmp key cisco address 0.0.0.0

crypto ipsec transform-set TS esp-aes 256 esp-sha256-hmac
  mode transport

crypto ipsec profile CCNP
  set transform-set TS

interface Tunnel1
  ip address 10.0.0.1 255.255.255.0
  tunnel source GigabitEthernet1
  tunnel mode ipsec ipv4
  tunnel destination 172.18.10.2
  tunnel protection ipsec profile CCNP
```

Which VPN technology is used in the exhibit?

- A. DVTI
- B. VTI
- C. DMVPN
- D. GRE

Answer: B

Explanation:

Reference: https://www.cisco.com/c/en/us/td/docs/ios-xml/ios/sec_conn_vpniips/configuration/zZ-Archive/IPsec_Virtual_Tunnel_Interface.html#GUID-EB8C433B-2394-42B9-997F-B40803E58A91

NEW QUESTION 38

Which benefit of FlexVPN is a limitation of DMVPN using IKEv1?

- A. GRE encapsulation allows for forwarding of non-IP traffic.
- B. IKE implementation can install routes in routing table.
- C. NHRP authentication provides enhanced security.
- D. Dynamic routing protocols can be configured.

Answer: B

NEW QUESTION 40

Where is split tunneling defined for IKEv2 remote access clients on a Cisco router?

- A. IKEv2 authorization policy
- B. Group Policy
- C. virtual template
- D. webvpn context

Answer: B

NEW QUESTION 43

Refer to the exhibit.


```
ip access-list extended CCNP
 permit 192.168.0.10
 permit 192.168.0.11

webvpn gateway SSL_Gateway
 ip address 172.16.0.25 port 443
 ssl trustpoint AnyConnect_Cert
 inservice

webvpn context SSL_Context
 gateway SSL_Gateway

 ssl authenticate verify all
 inservice

policy group SSL_Policy
 functions svc-enabled
 svc address-pool "ACPool" netmask 255.255.255.0
 svc dns-server primary 192.168.0.100
 svc default-domain cisco.com
 default-group-policy SSL_Policy
```

Cisco AnyConnect must be set up on a router to allow users to access internal servers 192.168.0.10 and 192.168.0.11. All other traffic should go out of the client's local NIC. Which command accomplishes this configuration?

- A. svc split include 192.168.0.0 255.255.255.0
- B. svc split exclude 192.168.0.0 255.255.255.0
- C. svc split include acl CCNP
- D. svc split exclude acl CCNP

Answer: C

NEW QUESTION 47

.....

Relate Links

100% Pass Your 300-730 Exam with ExamBible Prep Materials

<https://www.exambible.com/300-730-exam/>

Contact us

We are proud of our high-quality customer service, which serves you around the clock 24/7.

Viste - <https://www.exambible.com/>