

Exam Questions HPE0-J68

HPE Storage Solutions

<https://www.2passeasy.com/dumps/HPE0-J68/>

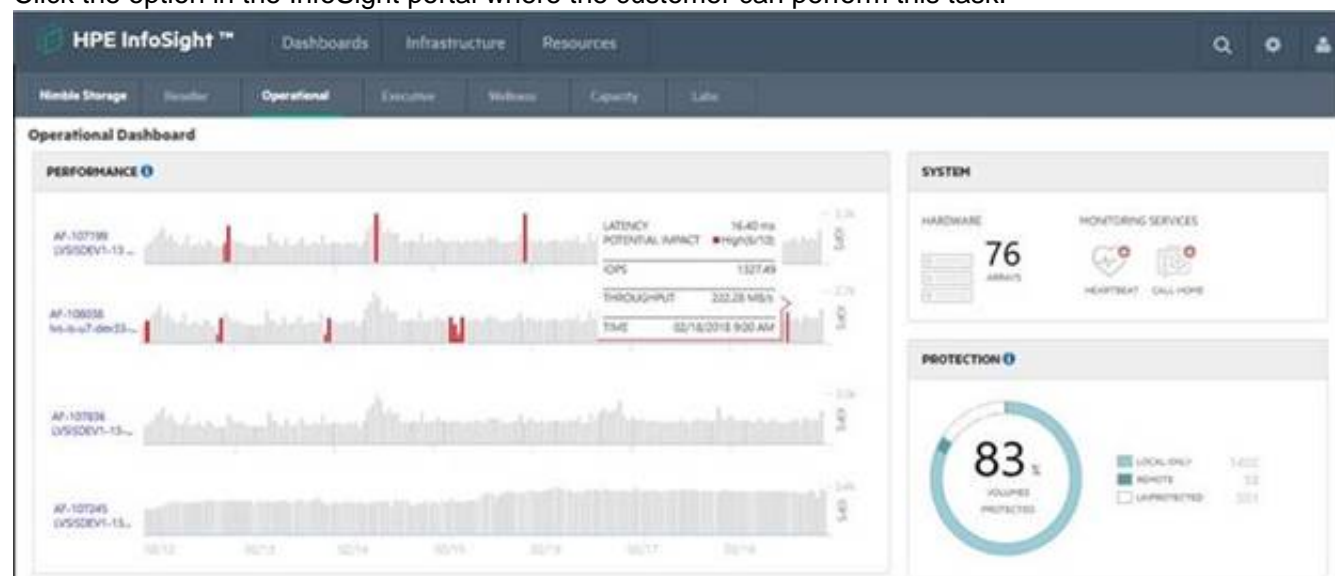


NEW QUESTION 1

- (Exam Topic 1)

A customer has a Nimble HF40 and needs to create a support ticket.

Click the option in the InfoSight portal where the customer can perform this task.

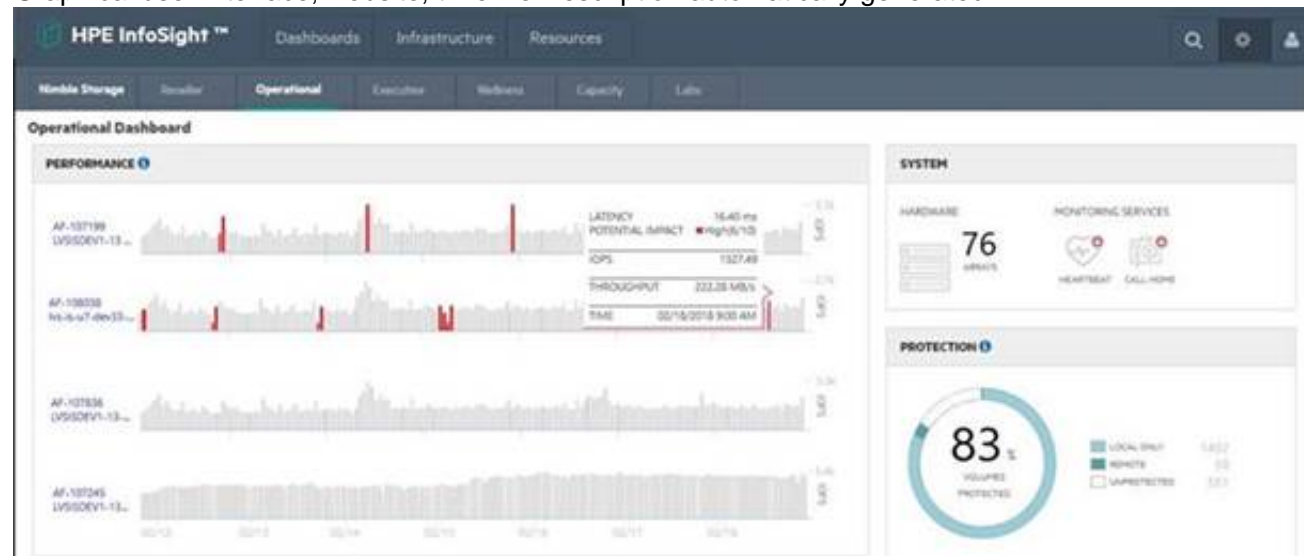


- A. Mastered
- B. Not Mastered

Answer: A

Explanation:

Graphical user interface, website, timeline Description automatically generated



NEW QUESTION 2

- (Exam Topic 1)

You have proposed a Primera array to a customer for new primary storage. The customer currently has an older 3PAR array that they will continue to use moving forward. The customer would like high availability configured.

Which RMC Peer Copy pre-requisites do you need to point out to the customer? (Choose two.)

- A. No license is required
- B. 2-port 10 Gb Ethernet Adapter (NIC) is required
- C. 4-port 1 Gb Ethernet Adapter (NIC) is required in each array
- D. RMC 6.2 is required
- E. Target drive type must match source drive type

Answer: CD

NEW QUESTION 3

- (Exam Topic 1)

You want to deploy Recovery Manager Central to a customer environment. How can you accomplish this? (Choose two.)

- A. Install RMC on top of the virtual or physical RHEL system using the GUI wizard
- B. Deploy an RMC virtual appliance to Microsoft Hyper-V hypervisor
- C. Deploy RMC on top of the virtual CentOS system using the CLI
- D. Deploy RMC on top of the virtual CentOS system using the GUI wizard
- E. Install RMC on the top of the virtual or physical RHEL system using the CLI
- F. Deploy an RMC virtual appliance to VMware ESXi hypervisor

Answer: BF

NEW QUESTION 4

- (Exam Topic 1)

You need to deploy a Recovery Manager Central appliance and integrate it with a customer's 3PAR system. Which information must be collected from the customer in order to proceed with the installer? (Choose two.)

- A. StoreOnce store name
- B. vCenter IP address or hostname
- C. HPE 3PAR used capacity
- D. IP address of the RMC
- E. NFS path

Answer: CD

NEW QUESTION 5

- (Exam Topic 1)

You need to create an N:M relationship between VMware hypervisors and virtual volumes with the least amount of administrative overhead. Click the option where you can create a group of VMware hypervisors for volumes provisioning.



- A. Mastered
- B. Not Mastered

Answer: A

Explanation:

Graphical user interface, text Description automatically generated

NEW QUESTION 6

- (Exam Topic 1)

A customer currently runs MSA 2040 SAS storage system with SFF drives. They are planning a hardware refresh. The customer is using virtual pools only, and is concerned about problematic data migration to the new platform.

How can the update to MSA2050 be performed?

- A. Peer migration license must be purchased for the online migration
- B. Peer migration license must be purchased for the offline migration
- C. Existing drives can be moved to the new system; both systems need to be online
- D. Existing drives can be moved to the new system; both systems need to be offline

Answer: B

NEW QUESTION 7

- (Exam Topic 1)

You are proposing a new Nimble solution to a customer that recently experienced data loss in their existing storage array. Which features of the Nimble array should you emphasize to your customer to address their concerns? (Choose two.)

- A. quick RAID rebuild
- B. deduplication
- C. compression
- D. encryption
- E. triple parity

Answer: BC

NEW QUESTION 8

- (Exam Topic 1)

A customer is implementing an SAP HANA environment and is looking for an alternative to an entirely in-memory database. Which storage technology should you recommend?

- A. SAS SSD
- B. NVMe SSD
- C. NVMe SCM
- D. Intel Optane

Answer: D

NEW QUESTION 9

- (Exam Topic 1)

A small company has recently purchased an MSA and two B-series SN3000B switches. In an effort save money, they installed the solution themselves. They call you complaining they can now see the multiple volumes on the MSA after creating just a single volume. What should you advise them to do?

- A. Enable Smart SAN on the MSA 2052
- B. Set volume's tier affinity to Performance
- C. Enable zoning on the SN3000B switches
- D. Enable MPIO on their host

Answer: D

NEW QUESTION 10

- (Exam Topic 1)

Match the MSA architecture components with their descriptions.

Component		Description
Tier		aggregation of disks of the same type using a specific RAID level
Virtual disk group		automatically assigned performance characteristic
Volume group		collection of virtual volumes allowing group management functions
Virtual pool		collection of virtual disk groups
Virtual volume		logical subdivision of a virtual pool that can be mapped to a host

- A. Mastered
- B. Not Mastered

Answer: A

Explanation:

Graphical user interface Description automatically generated with medium confidence

NEW QUESTION 10

- (Exam Topic 1)

What is the purpose of WWN in FC SAN? (Choose two.)

- A. Identification of zone members
- B. Identification of entities denied access to a volume
- C. Identification of entities via Storage Name Server (SNS)
- D. Load balanced frame delivery
- E. Forward translation of DNS entries

Answer: CE

NEW QUESTION 12

- (Exam Topic 1)

A customer is deploying a new StoreOnce VSA solution. How can the necessary storage capacity be added to the VSA? (Choose two.)

- A. Verify sufficient capacity LTUs are available
- B. Add a new virtual hard disk to the virtual machine
- C. The Cloud bank container needs to be configured once the VSA boots
- D. The Cloud bank container needs to be configured from the vCenter client

Answer: BD

NEW QUESTION 15

- (Exam Topic 1)

Match each HPE storage solution to its use case.

Solution		Use Case
Primera	<input type="text"/>	Smaller site traditional deployments
MSA	<input type="text"/>	Complete solution for virtualized environments
Nimble	<input type="text"/>	Enterprise class storage for SMB
Nimble dHCI	<input type="text"/>	Enterprise class storage with Tier-0 features
SimpliVity	<input type="text"/>	hyperconverged control with independent compute and storage scalability

- A. Mastered
- B. Not Mastered

Answer: A

Explanation:

Graphical user interface, text, application Description automatically generated

NEW QUESTION 19

- (Exam Topic 1)

You are designing a new storage environment for a customer. They need good performance, but need to keep costs to a minimum. They have a very limited staff, and staff is concerned about learning new technologies. You plan to recommend a Nimble HF20 solution.

Which storage connectivity components should you recommend?

- A. FlexFabric switches, Nimble iSCSI car
- B. FC adapters for servers
- C. FC switches, Nimble FC card, FC adapters for servers
- D. Ethernet switches, Nimble iSCSI card, dedicated NICs for servers
- E. Ethernet switches, Nimble FC card, dedicated FC for servers

Answer: C

NEW QUESTION 22

- (Exam Topic 1)

You have proposed a Primera array to a customer for primary storage. The customer currently has an older HPE 3PAR array and will continue to use it moving forward. The customer would like high availability configured.

Which RMC Peer Copy pre-requisites do you need to point out to the customer? (Choose two.)

- A. 4-port 1 Gb Ethernet Adapter (NIC) is required in each array
- B. Target drive type must match source drive type
- C. 2-port 10 Gb Ethernet Adapter (NIC) is required in each array
- D. Check that the 3PAR OS version is supported
- E. Required license must be provided
- F. RMC 6.2

Answer: AE

NEW QUESTION 25

- (Exam Topic 1)

Which StoreOnce Gen4 features are included with the system software without additional licenses? (Choose two.)

- A. Encryption
- B. Cloud Bank
- C. Catalyst
- D. VTL/NAS replication
- E. Flexible I/O HBAs

Answer: CD

NEW QUESTION 29

- (Exam Topic 1)

A customer asks you for a recommendation on setting up their new StoreOnce appliance. They plan to use NetBackup and need the highest performance setup they can get. Their local hosts are connected via FC and the rest are connected via a WAN. Which backup target type should you recommend?

- A. VTL
- B. S3
- C. CIFS
- D. Catalyst

Answer: A

NEW QUESTION 31

- (Exam Topic 1)

A customer is planning to upgrade their HF40 controllers to support additional I/O requirements. To which model can they upgrade to meet their new requirements?

- A. AF60
- B. AF40
- C. HF60
- D. HF40C

Answer: D

NEW QUESTION 32

- (Exam Topic 1)

Which feature allows HPE Primera, HPE Nimble, and HPE XP arrays to work with third-party management tools?

- A. REST API
- B. Data Protection Manager (DPM)
- C. StoreServe Management Console (SSMC)
- D. Service Processor

Answer: A

NEW QUESTION 36

- (Exam Topic 1)

You have proposed that a customer replace their legacy SAN switches with new ?-Series switches. They are concerned about the management of all the devices, so you have included SANnav in the proposal.

What are the benefits of SANnav that you should emphasize to this customer? (Choose two.)

- A. It runs in a dedicated JVM
- B. It offers automated SPOCK validation
- C. It runs in a browser
- D. It provides a global View
- E. It provides fine-grain visibility into Storage Fabrics (FC + Ethernet)

Answer: CD

NEW QUESTION 37

- (Exam Topic 1)

A customer environment includes:

10 DL380 Gen8 servers in a VMware Cluster

2 MSA storage arrays

2 8GB b-series fibre channel switches

The customer needs to replace their environment because it is end of life. They have limited budget. The customer is primarily concerned with management because they have limited IT staff, and they want to move away from fibre channel.

Which HPE Storage should you recommend?

- A. HPE Primera
- B. HPE XP8
- C. HPE Nimble dHCI
- D. HPE StoreOnce

Answer: A

NEW QUESTION 40

- (Exam Topic 1)

A customer has completely virtualized their datacenter with VMware. You propose a SimpliVity solution to replace their aging hardware.

Which SimpliVity features should you emphasize in your presentation? (Choose two.)

- A. It uses native hypervisor management tools for management
- B. It utilizes the Storage Management Utility for management and monitoring
- C. It utilizes a unified ASIC for performance
- D. It includes deduplication and backup capabilities
- E. It provides S3 file access

Answer: BD

NEW QUESTION 44

- (Exam Topic 1)

A customer is implementing a new high performance database environment.

What type of storage should you recommend?

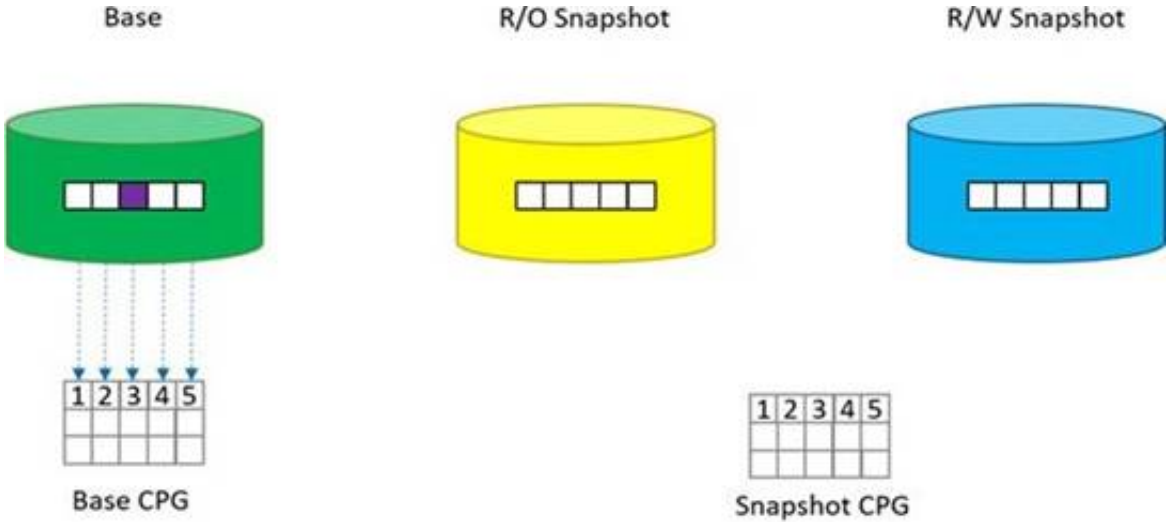
- A. scale-out storage
- B. object store
- C. system-defined storage
- D. network-attached storage

Answer: A

NEW QUESTION 48

- (Exam Topic 1)

Refer to the exhibit.



You create two snapshots of a thin provisioned base volume in an HPE Primera. One snapshot is read only and the other is read-write. A write occurs at the location shown in in the diagram.

Place the actions on the left into the order they are taken on the right.

Action	Order
Copy block to snapshot CPG	
Redirect the snapshots	
Update the block with new data	

- A. Mastered
- B. Not Mastered

Answer: A

Explanation:

A picture containing diagram Description automatically generated

NEW QUESTION 52

- (Exam Topic 1)

You are proposing a StoreOnce solution to a customer that has always used tape for a backup target. What should you suggest to ensure that the StoreOnce deduplication is correctly sized?

- A. StoreOnce timeless storage
- B. DDAnalyzer
- C. proof of concept with StoreOnce VSA
- D. OCA

Answer: B

NEW QUESTION 56

- (Exam Topic 1)

A customer has a VMware environment running vSphere 6.5. They are running DL380 Gen10 servers with HPE 82Q adapters connected through a HPE SN3000B switch to a Nimble HF40. They plan to upgrade the hypervisor.

What should they use to identify the latest firmware and compatibility information?

- A. SAN Health Diagnostics
- B. SPOCK
- C. OneView
- D. SAN Design Reference Guide

Answer: B

NEW QUESTION 59

- (Exam Topic 2)

A customer want to implement a virtualized environment and want to provide independent storage access to individual virtual servers. Which feature need to enabled on the B-series FC switches to support this solution?

- A. FCIP
- B. NPIV

- C. ALPA
- D. RSCN

Answer: B

NEW QUESTION 62

- (Exam Topic 2)

A customer is concerned about media and transmission errors caused by any component in the I/O stack from the server host bus adapter (HBA) into the HPE 3PAR StoreServ ports.

Which feature will address the customer's concern?

- A. Persistent Checksum
- B. Persistent Cache
- C. Peer Persistence
- D. Persistent Ports

Answer: A

NEW QUESTION 66

- (Exam Topic 2)

Which storage principle would benefit a customer who has several departments in their organization with different storage needs?

- A. Autonomic Management
- B. Federated storage
- C. Scale out storage
- D. Multi-tenancy

Answer: D

NEW QUESTION 67

- (Exam Topic 2)

A customer wants to implement a management and monitoring tool for an HPE B-series SAN switch environment. You plan to recommend the HPE SAN Network Advisor.

Which information about the customer's environment will help you to decide which edition to recommend?

- A. FCIP support
- B. Amount of used fabrics
- C. FCoE support
- D. Fabric OS version

Answer: B

Explanation:

– SAN Network Advisor is available in three types of bundles:• No-charge SAN Professional: Up to 300 switch ports, 2 fabrics, B-series Fabric OS only.• For-charge SAN Professional Plus: Up to 2560 switch ports and 36 fabrics.• For-charge SAN Enterprise: Up to 15000 switch ports and 100 fabrics. This bundle is required for B-series DC SANBackbone Director, SN8000B 8-Slot SAN Director and FICON management.

NEW QUESTION 71

- (Exam Topic 2)

A customer has deployed an HPE 3PAR StoreServ 8400 with two nodes and three additional disk enclosure. They want to expand the solution with two additional nodes and three additional disk enclosure. What must you do to expand the customer's solution?

- A. The new disks must be imported before the new nodes can be added
- B. The existing nodes need to be taken offline
- C. The system should be updated to the latest supported OS before the hardware expansion
- D. The new nodes and enclosure must be placed in adjacent racks

Answer: C

NEW QUESTION 76

- (Exam Topic 2)

You are designing a solution that will have a new HPE Synergy frame and an HPE 3PAR StoreServ 8200 storage array with only the built-in ports. This new environment must keep the infrastructure within the data center to a minimum.

Which interconnect module will achieve this goal?

- A. Synergy 25-50Gb F8 Switch Module
- B. 6125G/XG Ethernet Blade Switch
- C. Synergy 20Gb Interconnect Link Module
- D. Virtual Connect SE 40Gb F8 Module

Answer: D

NEW QUESTION 79

- (Exam Topic 2)

What advantage does the Unified API that is part of HPE's composable strategy provide?

- A. infrastructure lifecycle managed with standard programming code

- B. single portal for managing servers, networking, and storage
- C. write-back capability and instant cable warmth
- D. dedicated object storage platform

Answer: B

Explanation:

Unified API provides a single interface to discover, search, inventory, configure, provision, update, and diagnose the Composable Infrastructure. A single line of code enables full infrastructure programmability and can provision the infrastructure required for an application.

NEW QUESTION 80

- (Exam Topic 2)

Match the HPE converged Strategy principle with its function

- A. Federated Storage:- Move data between storage systems in peer-to-peer relationship simply, dynamically and nondestructively
- B. Deduplication:-Reduce allocated capacity by eliminating data redundancy
- C. Thin provisioning:-Reduce TCO ,Opex and CPEX by using virtualization technology to make storage resources more efficient.
- D. Storage tiering:-Use combination of I/O accelerator to place data to meet price, performance, and latency requirements .
- E. Storage virtualization:- Deliver simplified management ,higher utilization ,efficient, and agility by separating the logical and physical resource.

Answer: E

NEW QUESTION 81

- (Exam Topic 2)

Which management interface uses four basic commands (Create ,read, update ad delete)to enable administrators to define ad radically simply management processes?

- A. Rest API
- B. WMI
- C. SMI-S
- D. WEBEM

Answer: A

NEW QUESTION 83

- (Exam Topic 2)

How does the HPE StoreVirtual VSA storage platform scale performance and capacity?

- A. eliminates the need for storage controllers
- B. enables access through multiple protocols
- C. aggregates all resources into a single storage pool
- D. recreates storage pools on multiple devices

Answer: D

NEW QUESTION 84

- (Exam Topic 2)

A customer needs to add another HPE 3PAR StoreServ system and plans to use the federated storage approach. Which advantages can the customer expect? (Choose two.)

- A. load balancing
- B. reduced power, cooling, and environmental impacts
- C. allows multiple management tools
- D. easier migration
- E. federated deduplication

Answer: AD

Explanation:

Federated storage—Move data between storage systems in a peer-to-peer relationship simply, dy namically, and nondisruptively to improve storage utilization, balance workloads, and ease storage migration.

NEW QUESTION 89

- (Exam Topic 2)

Which storage feature is supported by both the HPE StoreVirtual and the HPE 3PAR StoreServ storage, and is a key differentiator of HPE storage solutions in the industry?

- A. Network RAID
- B. Peer Motion
- C. virtual Copy
- D. Dynamic Optimization

Answer: B

NEW QUESTION 93

- (Exam Topic 2)

Which type of networking switch handles both Ethernet and fibre channel traffic?

- A. Director
- B. Virtual
- C. Edge
- D. Converged

Answer: D

NEW QUESTION 96

- (Exam Topic 2)

During Technology workshop ,the customer asks about different between converged and fibre channel switches. What would be a benefits of using flex fabric switches in a fibre channel storage environment?

- A. Support for combining multiple physical switches in to one virtual switch with a single IP address
- B. Support for six Ethernet and two fibre channel ,or six Ethernet and two iSCSI or eight Ethernet adapters per server.
- C. Zones can be configured for QoS with high ,medium, and low priorities within a fabric on a zone by zone basic
- D. In-flight compression and encryption provides efficient link utilization and security

Answer: A

NEW QUESTION 101

- (Exam Topic 2)

Which 3PAR storeServ feature allow to host to continue I/O uninterrupted during a firmware update?

- A. Persistent Memory
- B. Persistent port (96)
- C. Peer persistenceD Persistent Cache

Answer: B

NEW QUESTION 106

- (Exam Topic 2)

A customer asks for a 50 TB disk-based backup solution with deduplication. They also need additional storage for test/dev purposes.

Which single HPE storage platform can you present to the customer that will meet both of their needs?

- A. HPE Nimble SF series
- B. HPE StoreEasy Gateway
- C. HPE StoreOnce
- D. HPE Nimble CS series

Answer: A

Explanation:

HPE quick specs, they also offer the flash-optimized performance needed to run development/test, QA, and analytics workloads on your backup data—plus production workloads when needed.

NEW QUESTION 109

- (Exam Topic 2)

A customer has a 3PAR storeserv with FC and SSD drives who would like to improve the performance for random reads. Which 3PAR Storeserve feature would provide better read performance?

- A. Adaptive Flash Cache
- B. Deduplication
- C. Smart Cache
- D. Express Layout

Answer: A

NEW QUESTION 111

- (Exam Topic 2)

A customer uses Recovery manager central for VMware (RMC-V).They need to ability to perform granular recovery of application item directly from backups...Which solution integrates with RMC-V to provide the desired requirements?

- A. Veeam Backup & Replication
- B. Netbackup
- C. StoreOnce cloudbank
- D. CommVault

Answer: A

NEW QUESTION 112

- (Exam Topic 2)

Which software feature should an HPE 3PAR Storeserv 8000 customer use to optimize data protection and recovery, Including rapid online recovery for his VMware environment?(select two)

- A. HPE 3PAR Virtual Copy software

- B. HPE 3PAR Remote copy software
- C. HPE 3PAR Security software suite
- D. HPE 3PAR File persona Software suite
- E. HPE StoreOnce recovery manager central for VMware

Answer: AE

NEW QUESTION 114

- (Exam Topic 2)

A customer with several HPE 3PAR StoreServ arrays has reported latencies with newly updated applications. You have proposed changes to the AO configuration and need to provide high-resolution reports on how the change has affected the latencies.

What should you propose on delivering the service time and I/O workload information daily for you and the customer?

- A. Use IMC to schedule performance data gathering and email delivery.
- B. Schedule SSMC System Reporter to send the defined email reports.
- C. Enable the Service Processor to gather Performance data and schedule data transfer.
- D. Login to InfoSight and analyze Advanced Performance history.

Answer: D

NEW QUESTION 116

- (Exam Topic 2)

After a performance analysis, a customer plan to reorganize his adaptive Flash cache (AFC)

configuration and want to raise it from 256 to 768GB. Which action is needed to take advantage of the new AFC configuration?

- A. Remove flash cache for all VVS then run create Flash cache
- B. Increase current AFC configuration to reflect the additional space
- C. Remove the old AO configuration and recreate a new one
- D. Run tunesys after raising the AFC to take advantage of the additional space

Answer: A

NEW QUESTION 118

- (Exam Topic 2)

Exhibit:



The customer has upgraded the first of their two HPE StoreServ 8200to the latest inform OS version to take the advantage of the compression feature .You have been asked to design the storage configuration to support oracle database volume to utilize HPE 3PAR compression . Based on the analysis of the array .what would be your suggestion to implement the requested change?

- A. Install the catalyst agent on the oracle server to enable inline compression on the selected VV
- B. Configure the source-side the compression to offload compression to the Host
- C. Balance the workloads between the arrays to have enough headroom for compression
- D. Consider adding another node pair for compression to work efficiently

Answer: A

NEW QUESTION 123

- (Exam Topic 2)

You are demonstrating adding a new virtual volume for an HPE 3PAR Storeserv array for your customer.in addition to the volume name ,What is the minimum information required to create a virtual volume(select two)

- A. Persona type
- B. Domain
- C. Host
- D. Size
- E. CPG

Answer: DE

NEW QUESTION 124

- (Exam Topic 2)

You are designing a new HPE 3PAR StoreServ all-flash array for the customer.. Which ratio should you expect to have the highest efficiency?

- A. Read/write ratio
- B. Reclamation ratio

- C. Compaction Ratio
- D. Thin provisioning ratio

Answer: C

NEW QUESTION 127

- (Exam Topic 2)

A customer with an HPE 3PAR StoreServ needs to upgrade their aging backup solution to a more advanced solution using snapshots and deduplication. Which HPE products would meet the customer's needs? (Choose two.)

- A. HPE 3PAR File Persona
- B. HPE StoreEver
- C. HPE 3PAR Remote Copy
- D. HPE StoreOnce
- E. HPE Recovery Manager Central

Answer: DE

NEW QUESTION 128

- (Exam Topic 2)

During which event will HPE 3par Storeserv persistent port feature provide transparent and uninterrupted failover (Select two)

- A. Loss of persistent cache
- B. B-series SAN switch upgrades
- C. Firmware upgrade
- D. Node maintenance or failure
- E. Loss of full-mesh cluster interconnect

Answer: CD

NEW QUESTION 131

- (Exam Topic 2)

A customer has an existing configuration consisting of first class and nearline SAS drive in an 8000 SFF enclosure. They add two SFF 8000 enclosure that are fully populated with nearline drives to an existing HPE 3Par storeserv 8400 array. What should the customer do to optimize their storage configuration?

- A. Defrag the CPG and run align drive on their system
- B. Run tunesys and on the array (275)
- C. Enable space reclamation
- D. Create new CPG for the newly installed drivers

Answer: B

NEW QUESTION 135

- (Exam Topic 2)

Users are complaining about poor performance with their Data Warehouse application. What is an effective solution to increase their performance at minimal cost?

- A. HPE 3PAR Adaptive Flash Cache
- B. HPE 3PAR Priority Optimization
- C. HPE 3PAR Dynamic Optimization
- D. HPE 3PAR Adaptive Optimization

Answer: B

NEW QUESTION 138

- (Exam Topic 2)

Which storage tool in the storage assessment foundry provide data protection analysis?

- A. Ninja protected+ (318)
- B. NinjaCrawler
- C. Ninja Thin
- D. Ninja Stars

Answer: A

NEW QUESTION 142

- (Exam Topic 2)

A customer needs to upgrade their HPE storage environment, including driver and firmware levels and OS, to the latest version. Where can you find the needed information about supported versions?

- A. HPE Storage Assessment Foundry
- B. HPE SAN Design Reference Guide
- C. HPE OneView
- D. HPE SPOCK

Answer: D

NEW QUESTION 145

- (Exam Topic 2)

A customer has a SAN infrastructure with an HPE C-Class blade enclosure, and a mix of ProLiant G7, Gen8 and Gen9 servers. They require a new storage platform.

How can you confirm the new storage array will be supported in the existing environment?

- A. Design an array with an older version of the firmware to ensure compatibility.
- B. Document existing server and SAN information, and consult SPOCK to ensure firmware compatibility.
- C. Design an array with the latest firmware, and recommend that the customer engage HPE PointNext to upgrade the existing hardware.
- D. Check recommended firmware levels in the HP SAN Design Reference Guide to ensure firmware compatibility.

Answer: B

NEW QUESTION 148

- (Exam Topic 2)

A large enterprise is experiencing exponential data growth of their existing Oracle databases. They are concerned about their increasing backup windows and the risk of non-compliance with recovery time objectives increase of data corruption in primary storage. Their primary storage is an 3PAR Storeserv 8400, and their backup target is an HPE StoreOnce System. Which HPE storage solution allow the customer to migrate this risk?

- A. RMC Express protect
- B. Catalyst in-Flight compression
- C. 3 PAR remote copy
- D. StoreOnce unified deduplication

Answer: A

NEW QUESTION 153

- (Exam Topic 2)

Which function is built into the HPE 3par OS and enable users to move data and workloads between array without impacting applications, users, or services?

- A. Peer persistence
- B. Adaptive optimization
- C. Peer motion
- D. Remote copy

Answer: A

NEW QUESTION 157

- (Exam Topic 2)

What is the benefits of HPE synergy(Select 2)

- A. It can present block storage services from HPE 3par as part of the resource pool
- B. It support up to 3 HPE store Virtual VSA nodes for storage RAID
- C. It can use HPE 3PAR file persona for objet storage
- D. It can compose and reclaim DAS storage
- E. It support HPE blade system C-Class Flex Fabrics Interconnect module (need to check)

Answer: AD

NEW QUESTION 162

- (Exam Topic 2)

A customer has mission-critical applications that intermittently experience heavy disk I/O. The storage speed has the most impact on the application's performance. The customer does not want to dedicate SSD disks to these applications because additional performance is only needed periodically, and moving the volumes between tiers takes too long.

Which HPE StoreVirtual VSA feature can address this customer's challenge?

- A. Storage virtualization
- B. Space Reclamation
- C. Thin Provisioning
- D. Adaptive Optimization

Answer: D

NEW QUESTION 163

- (Exam Topic 2)

Which statement is correct when comparing functionalities of the AF,CF, and SF series in the nimble storage portfolio?

- A. Zero copy clone are unique feature of all flash array within the nimble portfolio
- B. SF series supports storage snapshots and replication using veeeam backup & replication CS and AF series support storage snapshot only.
- C. Inline deduplication for complete array capacity in combination with compression is offered by the AF and SF series only (67) need to check
- D. 99.9999% availability measured and guaranteed for AF and CF series arrays, SF series array offer 99.999% availability.

Answer: C

NEW QUESTION 166

- (Exam Topic 2)

You are planning a single-site Nimble solution with iSCSI connectivity. Two 10GbE SFP+ dual port NICs are included in the configuration. You designed an

Intelligent Resilient Framework (IRF) stack with HPE FlexFabric 5900CP switches.
 Which statement is correct when discussing the IRF limits for this configuration?

- A. When connecting an iSCSI storage to an IRF stack, a minimum of four 10GbE ports must be used per switch.
- B. A maximum of two switches can be used in an IRF stack when connecting storage.
- C. In an IRF stack with storage connectivity, the 40GbE ports cannot be used.
- D. The used IRF ports for iSCSI traffic have to be configured as 10GbE converged ports.

Answer: A

NEW QUESTION 170

- (Exam Topic 2)

Due to industry regulation a customer is required to store backup at a separate data center from the company's main data center. The customer application require fast backup and quick restore increase of data lose. Which solution allow the customer to meet both industry and application requirement?

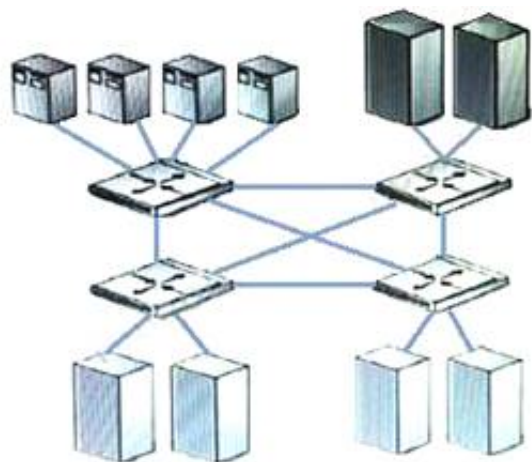
- A. HPE storeServe 3par in main and secondary data center with RCIP replication between arrays
- B. Nimble AF series in main data center and Nimble SF series in secondary data center
- C. HPE Storeserve 3Par in main data center HPE StoreOnce in secondary data center with RMC
- D. HPR StoreServ 3PAR in main data center and HPE StoreOnce in both main and secondary data center.

Answer: C

NEW QUESTION 174

- (Exam Topic 2)

Exhibit:



Which fabric design is shown?

- A. meshed
- B. single fabric
- C. cascaded
- D. core-edge

Answer: A

NEW QUESTION 177

- (Exam Topic 2)

Which HPE 3PAR StoreServ feature allows a host to continue I/O uninterrupted during a firmware upgrade?

- A. Peer Persistence
- B. Persistent Ports
- C. Persistent Memory
- D. Persistent Cache

Answer: B

NEW QUESTION 178

- (Exam Topic 2)

During a proof-of-concept you need to implement an inter-switch-link (ISL) between two HPE SN6000B switches. Which port mode must be set enable communication between the switches?

- A. N_PORT
- B. FL_PORT (WRONG)
- C. F_PORT
- D. E_PORT (Correct)

Answer: D

NEW QUESTION 183

- (Exam Topic 2)

A customer recently acquired another company and found that the existing infrastructure was outdated and costly to maintain. They need to put a complete infrastructure solution in place that minimizes the footprint in the data center as quickly and possible. Which solution you recommend?

- A. Simplicity 380
- B. Bladesystem 7000

- C. Converged systems
- D. Synergy 12000

Answer: A

NEW QUESTION 185

- (Exam Topic 2)

A customer is looking for a centralized file-sharing solution that can provide print services in addition to 15TB of storage. Which solution component should you recommend?

- A. FC switch
- B. NAS
- C. FC-based array
- D. Disk enclosure with integrated SAS switch

Answer: B

NEW QUESTION 186

- (Exam Topic 2)

What owns the physical drives in an HPE 3PAR StoreServ Express Layout?

- A. a logical disk
- B. a chunklet
- C. a single node
- D. a node pair

Answer: D

NEW QUESTION 187

- (Exam Topic 2)

A Company using an existing 1GB ISCSI storage array is experiencing storage access performance issue. They are interested in deploying HPE 3PAR Storeserv with 16GB /S FC end to-end to improve the performance to the minimal changes to the environment. The existing environment consists of these HPE products

- * HPE C7000 Blade system platinum blade enclosure with HP virtual connect Flex 10 interconnect modules.
- * Configuration of HPE Proliant Gen8 and Gen9 blade servers
- * HPE 2920 Switches

Which HPE products must be included to support new HPE 3PAR Storeserv?(Select two)

- A. HPE B-Series 16GB SAN switch for HPE Blade system C-class series
- B. HPE 16GB/s Fibre channel HBA for Blade servers
- C. HP 5900CP switch series with 16GB/S SFP+ Modules
- D. HPE Flex fabric 20GB,2-Port 630 FLB adapter
- E. HPE Virtual connect Flex fabric 20/40 f8 modules

Answer: AB

NEW QUESTION 188

- (Exam Topic 2)

When using a HPE 3 PAR Storeserv array to enable a user to apply array-based data services to specific application and VM's. What is the benefit of implementing VM-level gradually of Volts?

- A. Data sprawls eliminated by performing the migration functions at the array level using 3PAR HPE Dynamic Optimization
- B. Efficiency is maintained by reclaiming space from deleted or migrated VMs using capabilities built into the storage ASIC
- C. Performing is accelerated by detecting and moving the most frequently –accessed VMs into the fast class tier
- D. Performance is accelerated by leveraging the deduplication capabilities built into the storage ASIC

Answer: B

NEW QUESTION 192

- (Exam Topic 2)

You are planning an upgrade to a customer's existing HPE 3PAR StoreServ 8200 to include 4-port 16Gb FC adapters. The servers are zoned to see the storage via four paths. The customer is concerned about storage availability during the upgrade.

Which statement is correct about performing this upgrade?

- A. When NPIV is enabled, the HPE 3PAR Port persistence will show all four paths to the servers.
- B. The MPIO service will do a failover, and the servers will continue to have access via two paths.
- C. Windows servers require host explorer is installed to ensure MPIO is unaffected.
- D. As long as MEM driver is installed on VMware vSphere, no path failures are seen.

Answer: A

NEW QUESTION 196

- (Exam Topic 2)

A customer run several HPE 3PAR storeserv system in their environment using data rest encryption .The customer needs to add an HPE 3PAR Storeserv 8000system to the storage pool and an external key manager for all systems.. What is the requirement for this solution?

- A. Boot server for the existing 3PAR storeserv array must be replaced with self-encrypting drive

- B. All drives of the new HPE 3PAR storeserv array must be self-encrypting
- C. HPE ESKM FIPS mode must be disabled by the administrator
- D. Data on the existing HPE 3PAR storeserv array must be decrypted and re-encrypted with new keys

Answer: B

NEW QUESTION 199

- (Exam Topic 2)

A customer need a new storage system for visual desktop infrastructure environment to reduce the time required to provision new desktop. Which HPE solution should you recommended to fulfill this customers requirements?

- A. Snapclones on HPE MSA 2040
- B. SmartClone on HPE store virtual VSA(54)
- C. Storage pool on HPE store Easy
- D. Virtual Copy on HPE 3Par storeServ

Answer: B

NEW QUESTION 204

- (Exam Topic 2)

A large organization is experiencing exponential data growth of object storage due to recent mergers and acquisition .They need an on-premise solution to optimize cost at petabyte scale Which components should you recommend for a software-defined solution ?(select two)

- A. HPE Appolo 4510 server
- B. HPE Complete –Scalability RING
- C. HPE Synergy 660 Gen10 compute modules
- D. HPE complete –CTERA
- E. HPE 3PAR Storeserv 9450c

Answer: AB

NEW QUESTION 206

- (Exam Topic 2)

Which protocols are currently used in the front end by HPE 3PAR StoreServ systems? (Choose two.)

- A. iSCSI
- B. Infiniband
- C. SAS
- D. NVMe
- E. FC

Answer: AE

NEW QUESTION 209

- (Exam Topic 2)

A customer has a SAN based on HPE B-series switches with Gen6 fibre channel technology. Their workload is continually growing and they are experiencing performance issues. They need a solution to enable real-time monitoring and to speed up troubleshooting in his SAN backend.

Which unique feature of the HPE B-series Gen6 switches should you recommend? (Choose two.)

- A. Fabric Watch
- B. MAPS
- C. Advanced Trunking
- D. Fabric Vision
- E. Extended Fabrics

Answer: AD

NEW QUESTION 211

- (Exam Topic 2)

A customer is planning to connect a new HPE 3PAR StoreServ system to its existing Synergy based composable infrastructure via direct-attach.

Which tool would be used to manage the storage?

- A. HPE SAN Network Advisor
- B. HPE Synergy Image Streamer
- C. HPE Synergy Composer
- D. HPE InfoSight for 3PAR

Answer: C

NEW QUESTION 216

- (Exam Topic 2)

An HPE 3PAR StoreServ 9000 All-Flash Array customer plans to deploy a secondary array 20 km away from their primary array to enable storage replication over a dark fibre. Their existing environment consists of one HPE Synergy Frame 12000, HPE SN6000B Fibre Channel Switches, HPE FlexFabric 5700 Switch Series, and HPE StoreOnce Systems.

Which HPE license is required to meet the customer's technical requirements?

- A. Intelligent Resilient Framework licenses

- B. HPE StoreOnce Replication
- C. Extended Fabric
- D. HPE 3PAR Remote Copy

Answer: D

NEW QUESTION 220

- (Exam Topic 2)

A customer need a backup solution to their virtualized environment .The backup solution must be agentless ,hypervise independent and integrated with HPE storage solutions. The solution must support Nimble snapshot and replication management. What products meets the customer requirement?

- A. HPE storeOnce Recovery manager central
- B. Commvault Simpana Intellisnap
- C. Micro Focus Data Protector
- D. Veem Backup and Replication

Answer: D

NEW QUESTION 225

- (Exam Topic 2)

Which statement describes HPE StoreVirtual Network RAID functionality?

- A. Redundancy is managed on a per-volume basis.
- B. With Network RAID 10+2 data is striped and mirrored across two or more storage systems.
- C. Network RAID 10 requires an even number of storage nodes.
- D. Volumes remain available if an odd number of nodes are available.

Answer: A

Explanation:

Redundancy is managed on a per volume basis to improve storage utilization and to remove any single point of failure.

NEW QUESTION 227

- (Exam Topic 2)

A customer has an excisting environment with 3PAR,Nimble and MSA. They are providing file servicing from all arrays with multiple virtual machine but preference is not adequate.

What should you add to the environment to increase performance ,increase availability, and reduce management overhead?

- A. StoreEasy 3850 Gateway
- B. StoreEasy 5000
- C. 3PAR File Persona
- D. Simplvity 380

Answer: A

NEW QUESTION 229

- (Exam Topic 2)

You have just completed a performance analysis of an HPE 3PAR StoreServ 8400 disk array with different tiers at a customer's site. After reviewing the performance metrics, you determine that they should install a new tier of SSD drives.

Which actions should you recommend they take to fully optimize the array? (Choose two.)

- A. Configure Adaptive Flash Cache.
- B. Configure scheduled tunesys tasks.
- C. Rebalance all flash drives between nodes 0 and 2.
- D. Configure Adaptive Optimization.
- E. Configure dedicated drives to enable Adaptive Flash Cache.

Answer: BD

NEW QUESTION 230

- (Exam Topic 2)

A customer migrate their infrastructure from a 3rd party storage to a Nimble environment. During an architecture workshop, you discuss VMvision with the customer and the system engineer. Which statement is correct when implementing performance monitoring using VMVision?

- A. Nibmle service processor collects relevant per VM performance data and send them using SSL port 443 to VMvision
- B. VMvision is an agentless integration into infosight and needs only the Vcenter server appliance credentials to connec
- C. (page 112)
- D. VMware vSphere storage API's array integration (VAAI)has to be configured to combine storage and VM performance metrics
- E. SNMP trap service has to be configured to send traps to infosight and integrate performance data using VMvision.

Answer: C

NEW QUESTION 235

- (Exam Topic 2)

Which statement is correct when comparing functionalities of the AF and HF series in the Nimble storage portfolio? (Choose Two)

- A. Zero Copy Clones are a unique feature of All-Flash arrays within the Nimble Portfolio.
- B. >99.9999% availability is measured and guaranteed for AF and HF series arrays.
- C. HF series has a dedicated read cache and AF series does not have a dedicated reach cache.
- D. HF series supports storage snapshots and replication using Veeam Backup & Replication, HF and AF series support storage snapshots only

Answer: BC

NEW QUESTION 239

.....

THANKS FOR TRYING THE DEMO OF OUR PRODUCT

Visit Our Site to Purchase the Full Set of Actual HPE0-J68 Exam Questions With Answers.

We Also Provide Practice Exam Software That Simulates Real Exam Environment And Has Many Self-Assessment Features. Order the HPE0-J68 Product From:

<https://www.2passeasy.com/dumps/HPE0-J68/>

Money Back Guarantee

HPE0-J68 Practice Exam Features:

- * HPE0-J68 Questions and Answers Updated Frequently
- * HPE0-J68 Practice Questions Verified by Expert Senior Certified Staff
- * HPE0-J68 Most Realistic Questions that Guarantee you a Pass on Your FirstTry
- * HPE0-J68 Practice Test Questions in Multiple Choice Formats and Updatesfor 1 Year