



HP

Exam Questions HPE3-U01

Aruba Certified Network Technician Exam(ACNT)

About ExamBible

[Your Partner of IT Exam](#)

Found in 1998

ExamBible is a company specialized on providing high quality IT exam practice study materials, especially Cisco CCNA, CCDA, CCNP, CCIE, Checkpoint CCSE, CompTIA A+, Network+ certification practice exams and so on. We guarantee that the candidates will not only pass any IT exam at the first attempt but also get profound understanding about the certificates they have got. There are so many alike companies in this industry, however, ExamBible has its unique advantages that other companies could not achieve.

Our Advances

* 99.9% Uptime

All examinations will be up to date.

* 24/7 Quality Support

We will provide service round the clock.

* 100% Pass Rate

Our guarantee that you will pass the exam.

* Unique Gurantee

If you do not pass the exam at the first time, we will not only arrange FULL REFUND for you, but also provide you another exam of your claim, ABSOLUTELY FREE!

NEW QUESTION 1

To which wireless device category do a hardwire desktop PC belongs?

- A. stationary devices
- B. somewhat mobile devices
- C. highly mobile devices
- D. intermittent mobile devices

Answer: C

NEW QUESTION 2

Which configurable switchport feature makes collisions impossible to occur?

- A. auto speed
- B. VLANs
- C. full-duplex
- D. half-duplex

Answer: C

NEW QUESTION 3

Which protocol provides logical addressing used for routing messages across the network towards their destination?

- A. Internet Protocol
- B. Transmission Control Protocol
- C. Wired Ethernet
- D. Link Layer Discovery Protocol

Answer: A

NEW QUESTION 4

Which represents a valid Basic Service Set Identifier (BSSID)?

- A. the radio and all its associated clients
- B. the name of the wireless network
- C. a group of radios and all its WLAN clients
- D. a radio's MAC address assigned to a WLAN

Answer: B

NEW QUESTION 5

Which OSI model layer is in charge of creating data?

- A. Physical
- B. Transport
- C. Layer 4
- D. Layer 7

Answer: B

NEW QUESTION 6

Which condition allows 5Ghz channels to avoid Adjacent Channel Interference?

- A. transmit at 40 MHz bandwidth
- B. transmit at high power levels
- C. transmit at low power levels
- D. transmit at 20 MHz bandwidth

Answer: A

NEW QUESTION 7

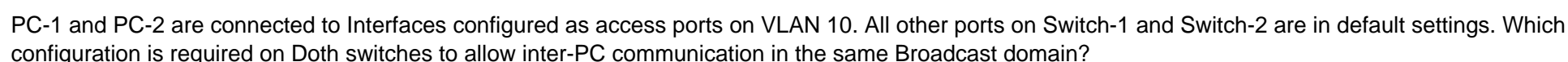
You have connected a Multilayer switch to an Internet Service Provider router that has the 172.16.31.254 IP address. What configuration line do you have to enter on your switch to enable internet access?

- A. route 172.16.31.254 0.0.0.0 0.0.0.0
- B. ip route 0.0.0.0/0 172.16.31.254
- C. routing 0.0.0.0/0 172.16.31.254/24
- D. ip routing 0/0 172.16.31.254

Answer: A

NEW QUESTION 8

Refer to Exhibit.



- A. Option A
B. Option B
C. Option C
D. Option D

Answer: A

NEW QUESTION 9

What is the goal of the TCP three-way handshake?

- A. To notify the destination who the originator is.
- B. To acknowledge the reception of the segments.
- C. To establish a reliable, flow-controlled connection.
- D. To notify the number of segments that will be sent.

Answer: C

NEW QUESTION 10

Which accurately describes the TCP/IP Model? (Select two.)

- A. It is a set of communication protocols used on TCP-based networks only.
- B. It specifies how to compress, fragment, encrypt, and analyze data.
- C. It specifies how to assemble, address, transmit, route, and disassemble a data packet.
- D. It is a set of communication protocols used on IP-based networks only.
- E. It is a set of communication protocols used on Ethernet-based networks only.

Answer: CD

NEW QUESTION 10

Which unit of measurement is recommended for expressing radio frequency power due to its logarithmic nature?

- A. lumens
- B. decibel relative to isotrope (dBi)
- C. milliwatt (mW)
- D. decibel relative to milliwatt (dBm)

Answer: D

Explanation:

Decibel (dB)Decibel is a logarithmic unit of measure used to express the ratio of two values of the same measure. This unit is not included to the System International of units (SI), but it is widely used in communication systems and many other technical fields, as it allows to compare two values of any nature, provided that these values are expressed in the same unit.

Decibel is a decile of the main, larger unit — Bel. Bel is a common logarithm of the ratio of two energies. But in practice Bel was a far too big value, therefore its tenth part is used — decibel.

The logarithmic method of presentation of numbers often can be very useful, as it allows to replace multiplication with addition, division with subtraction, raising to

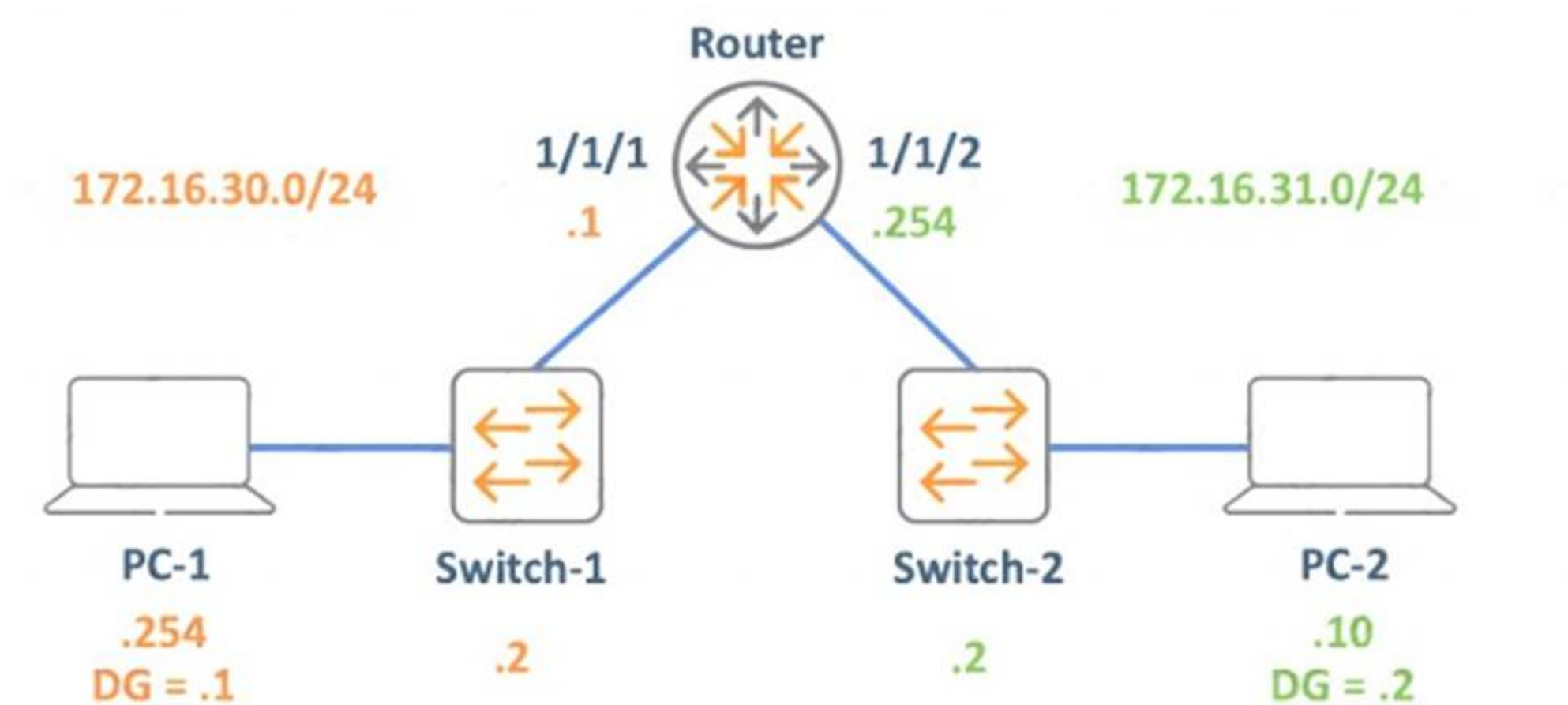
power with multiplication, and extracting a root with the division.
 What is measured in dB in the MRFC:

- Gain constant
- Sound level
- Signal/noise ratio
- Signal attenuation

https://en.cyclopedia.ifcg.ru/wiki/Radiofrequency_characteristics

NEW QUESTION 15

Refer to Exhibit.



The PCs are not able to successfully establish bidirectional communication. What change must you deploy to enable the communication between PC-1 and PC-2?

- A. change PC-1 's default gateway to 172.16.30.2
- B. change PC-1's IP address to 172.16.30.10
- C. change the Router's 1/1/1 interface IP to 172.16.30.254
- D. change PC-2's default gateway to 172.16.31.254

Answer: C

NEW QUESTION 18

Which message is an example of Broadcast communication?

- A. DHCP offer
- B. ICMP Echo
- C. HTTP Get
- D. ARP Request

Answer: B

NEW QUESTION 23

.....

Relate Links

100% Pass Your HPE3-U01 Exam with ExamBible Prep Materials

<https://www.exambible.com/HPE3-U01-exam/>

Contact us

We are proud of our high-quality customer service, which serves you around the clock 24/7.

Viste - <https://www.exambible.com/>