

## Exam Questions AZ-140

Configuring and Operating Windows Virtual Desktop on Microsoft Azure

<https://www.2passeasy.com/dumps/AZ-140/>



### NEW QUESTION 1

HOTSPOT - (Topic 3)

You have a Windows Virtual Desktop host pool that has a max session limit of 15. Disconnected sessions are signed out immediately. The session hosts for the host pool are shown in the following exhibit.

Home > Windows Virtual Desktop > WVD

## WVD - Session hosts

Host pool

+ Add Refresh Assign Export to CSV

Search by name Status: 12 selected Drain mode: 2 selected

Name ↑↓	Status ↑↓	Drain mode ↑↓	Assigned User ↑↓	Active sessions	Resource group ↑↓
WVD-0	Available	Off	-	11	rg-wvd
WVD-1	Available	Off	-	2	RG-WVD
WVD-2	Available	On	-	0	RG-WVD
WVD-3	Available	Off	-	15	RG-WVD
WVD-5	Available	On	-	0	RG-WVD
WVD-6	Available	Off	-	13	RG-WVD
WVD-4	Unavailable	Off	-	0	RG-WVD

Use the drop-down menus to select the answer choice that completes each statement based on the information presented in the graphic.

NOTE: Each correct selection is worth one point.

The host pool type is [answer choice].

pooled

personal with direct assignment

personal with automatic assignment

New sessions can occur on [answer choice] only.

WVD-0, WVD-1, and WVD-6

WVD-0, WVD-1, WVD-3, and WVD-6

WVD-0, WVD-1, WVD-2, WVD-5, and WVD-6

- A. Mastered  
B. Not Mastered

Answer: A

Explanation:

The host pool type is [answer choice].

pooled

personal with direct assignment

personal with automatic assignment

New sessions can occur on [answer choice] only.

WVD-0, WVD-1, and WVD-6

WVD-0, WVD-1, WVD-3, and WVD-6

WVD-0, WVD-1, WVD-2, WVD-5, and WVD-6

### NEW QUESTION 2

DRAG DROP - (Topic 3)

After you answer a question in this section, you will NOT be able to return to it. As a result, these questions will not appear in the review screen.

You have an Azure Virtual Desktop host pool that runs Windows 10 Enterprise multi-session.

User sessions are load-balanced between the session hosts. Idle session timeout is 30 minutes.

You plan to shut down a session host named Host1 to perform routine maintenance. You need to prevent new user sessions to Host1 without disconnecting active user sessions.

Solution: From the properties of the virtual machine of Host1, you configure the Auto-shutdown settings.

Does this meet the goal?

- A. Yes  
B. No

**Answer:** B

**Explanation:**

Reference:

<https://docs.microsoft.com/en-us/azure/virtual-desktop/drain-mode>

**NEW QUESTION 3**

- (Topic 3)

You have an on-premises network and an Azure subscription. The subscription contains the following virtual network:

\* Name: VNet1

\* Address space: 10.10.0.0/16

\* Subnet name: Subnet1

\* Subnet1 address range: 10.10.0.0/16

You deploy an Azure Virtual Desktop host pool that contains 10 session hosts to Subnets1. You plan to deploy a VPN gateway to VNet1 and provide the session hosts with access to the on-premises network.

You need to ensure that you can deploy the VPN gateway. What should you do first?

- A. Modify the address range of Subnet1. Most Voted
- B. Add a subnet named GatewaySubnet to VNet1.
- C. Modify the address space of VNet1. Most Voted
- D. Associate a network security group (NSG) to Subnet1.

**Answer:** B

**Explanation:**

In order to deploy a VPN gateway to VNet1, you should first add a subnet named GatewaySubnet to VNet1. According to the Microsoft Official Guide AZ-140, "You must create a gateway subnet for the virtual network that you plan to use for the gateway. The subnet must be named GatewaySubnet and it must use an address range that is large enough to accommodate the number of IP addresses that you plan to use for the gateway and its supporting resources." Therefore, the first step to ensure that you can deploy the VPN gateway is to add a subnet named GatewaySubnet to VNet1.

**NEW QUESTION 4**

- (Topic 3)

You have an Azure Virtual Desktop deployment that contains the host pools shown in the following table.

Name	Type	Location
Pool1	Windows 10 Enterprise, personal	East US
Pool2	Windows Server 2019, pooled	East US

You need to create a disaster recovery environment in the West US region. The solution must minimize costs and administrative effort. What should you do?

- A. Regenerate the token and reregister the virtual machines in the host pools.
- B. Create two new host pools in the West US region.
- C. Run the Invoke-RdsUserSessionLogoff cmdlet.
- D. Create an Azure Site Recovery plan.

**Answer:** B

**NEW QUESTION 5**

- (Topic 3)

You have an Azure Active Directory Domain Services (Azure AD D5) domain named contoso.com.

You have an Azure Storage account named storage1. Storage1 hosts a file share named share1 that has share and file system permissions configured. Share1 is configured to use contoso.com for authentication,

You create an Azure Virtual Desktop host pool named Pool1. Pool1 contains two session hosts that use the Windows 10 multi-session + Microsoft 365 Apps image.

You need to configure an FSLogix profile container for Pool1.

What should you do next?

- A. Generate a shared access signature (SAS) key for storage1.
- B. Install the FSLogix agent on the session hosts of Pool1.
- C. From storage1, set Allow shared key access to Disabled.
- D. Configure the Profiles setting for the session hosts of Pool1.

**Answer:** B

**Explanation:**

Reference:

<https://docs.microsoft.com/en-us/azure/virtual-desktop/create-host-pools-user-profile>

**NEW QUESTION 6**

- (Topic 3)

You have a Windows Virtual Desktop host pool that contains 20 Windows 10 Enterprise multi-session hosts.

Users connect to the Windows Virtual Desktop deployment from computers that run Windows 10.

You plan to implement FSLogix Application Masking.

You need to deploy Application Masking rule sets. The solution must minimize administrative effort.

To where should you copy the rule sets?

- A. the FSLogix profile container of each user
- B. C:\Program Files\FSLogix\Apps\Rules on every Windows 10 computer
- C. C:\Program Files\FSLogix\Apps\Rules on every session host

**Answer:** C

**Explanation:**

Reference:

<https://docs.microsoft.com/en-us/azure/virtual-desktop/fslogix-office-app-rule-editor>

**NEW QUESTION 7**

- (Topic 3)

Note: This question is part of a series of questions that present the same scenario. Each question in the series contains a unique solution that might meet the stated goals. Some question sets might have more than one correct solution, while others might not have a correct solution.

After you answer a question in this section, you will NOT be able to return to it. As a result, these questions will not appear in the review screen.

You have a Windows Virtual Desktop host pool named Pool1 that is integrated with an Azure Active Directory Domain Services (Azure AD DS) managed domain.

You need to configure idle session timeout settings for users that connect to the session hosts in Pool1.

Solution: From the Azure portal, you modify the Session behavior settings in the RDP Properties of Pool1.

Does that meet the goal?

- A. Yes
- B. No

**Answer:** B

**NEW QUESTION 8**

- (Topic 3)

You create the virtual machines shown in the following table.

Name	State
SourceVM1	Specialized state
SourceVM2	Generalized state
SourceVM3	Audit mode

You need a source virtual hard disk for new Azure Virtual Desktop session host deployments. The source operating system must have user-specific and machine-specific information removed.

Which virtual machines can you use as the source?

- A. SourceVM3 only
- B. SourceVM1 only
- C. SourceVM1, SourceVM2, and SourceVM3
- D. SourceVM1 and SourceVM2 only
- E. SourceVM2 only

**Answer:** E

**NEW QUESTION 9**

- (Topic 3)

You deploy multiple Windows Virtual Desktop session hosts that have only private IP addresses.

You need to ensure that administrators can initiate an RDP session to the session hosts by using the Azure portal.

What should you implement?

- A. Remote Desktop Connection Broker (RD Connection Broker)
- B. Azure Application Gateway
- C. Azure Bastion
- D. Remote Desktop Session Host (RD Session Host)

**Answer:** D

**NEW QUESTION 10**

- (Topic 3)

You have an Azure Virtual Desktop deployment that contains the resources shown in the following table.

Name	Description
HostPool1	Personal host pool that contains five session hosts
VNET1	Azure virtual network with a subnet named Subnet1
Subnet1	Virtual network subnet to which the five session hosts are connected



You need to enable just-in-time (JIT) VM access for all the session hosts. What should you do first?

- A. Deploy Azure Bastion to VNET1.
- B. Assign network security groups (NSGs) to the network interfaces of the five session hosts.
- C. Configure Access control (IAM) for HostPool1.
- D. Assign a network security group (NSG) to Subnet1.

**Answer:** B

#### NEW QUESTION 10

- (Topic 3)

You have a Azure Virtual Desktop host pool that contains live session hosts. The session hosts run Windows 10 Enterprise multi-session.

You need to prevent users from accessing the internet from Azure Virtual Desktop sessions. The session hosts must be allowed to access all the required Microsoft services.

Solution: You configure the RDP Properties of the host pool. Does This meet the goal?

- A. Yes
- B. No

**Answer:** B

#### NEW QUESTION 14

- (Topic 3)

Your network contains an on-premises Active Directory domain named contoso.com that syncs to an Azure Active Directory (Azure AD) tenant You have an Azure Virtual Desktop host pool named Pool1 that has the following settings:

- Host pool name- Pool 1
- Host pool type: Personal
- Number of VMs: 3

The session hosts have the following configurations:

- Image used to create the virtual machines: Windows 10 Enterprise
- Virtual machines domain-Joined to: On-premises conroso.com domain

You need to ensure that you can use Microsoft EndPoint Manager to manage security updates on the session hosts. What should you do?

- A. Create Windows 10 Enterprise multi-session images.
- B. Configure the session hosts as hybrid Azure AD-joined.
- C. Change Host pool type to Pooled and specify Load balancing algorithm as Depth-first
- D. Change Host pool type to Pooled and specify Load balancing algorithm as Breadth-first

**Answer:** B

#### NEW QUESTION 19

- (Topic 3)

You have an Azure Virtual Desktop deployment that contains a session host named Host1.

You need to configure Windows Defender Firewall to allow inbound network traffic for RDP Shortpath on Host1.

Which program in the C:\Windows\System32 folder should you specify in the inbound firewall rule?

- A. Rdpshell.exe
- B. Svchost.exe
- C. Raserver.exe
- D. Mstsc.exe

**Answer:** B

#### Explanation:

New-NetFirewallRule -DisplayName 'Remote Desktop - RDP Shortpath (UDP-In)' -Action Allow -Description 'Inbound rule for the Remote Desktop service to allow RDP Shortpath traffic. [UDP 3390]' -Group '@FirewallAPI.dll,-28752' -Name 'RemoteDesktop-UserMode-In-RDPShortpath-UDP' -PolicyStore PersistentStore -Profile Domain, Private -Service TermService -Protocol UDP -LocalPort 3390 -Program '%SystemRoot%\system32\svchost.exe' -Enabled:True

<https://learn.microsoft.com/en-us/azure/virtual-desktop/configure-rdp-shortpath?tabs=managed-networks>

#### NEW QUESTION 23

- (Topic 3)

You have a Windows Virtual Desktop host pool.

You need to install Microsoft Antimalware for Azure on the session hosts. What should you do?

- A. Add an extension to each session host.
- B. From a Group Policy Object (GPO), enable Windows 10 security features.
- C. Configure the RDP Properties of the host pool.
- D. Sign in to each session host and install a Windows feature.

**Answer:** A

#### Explanation:

Reference:

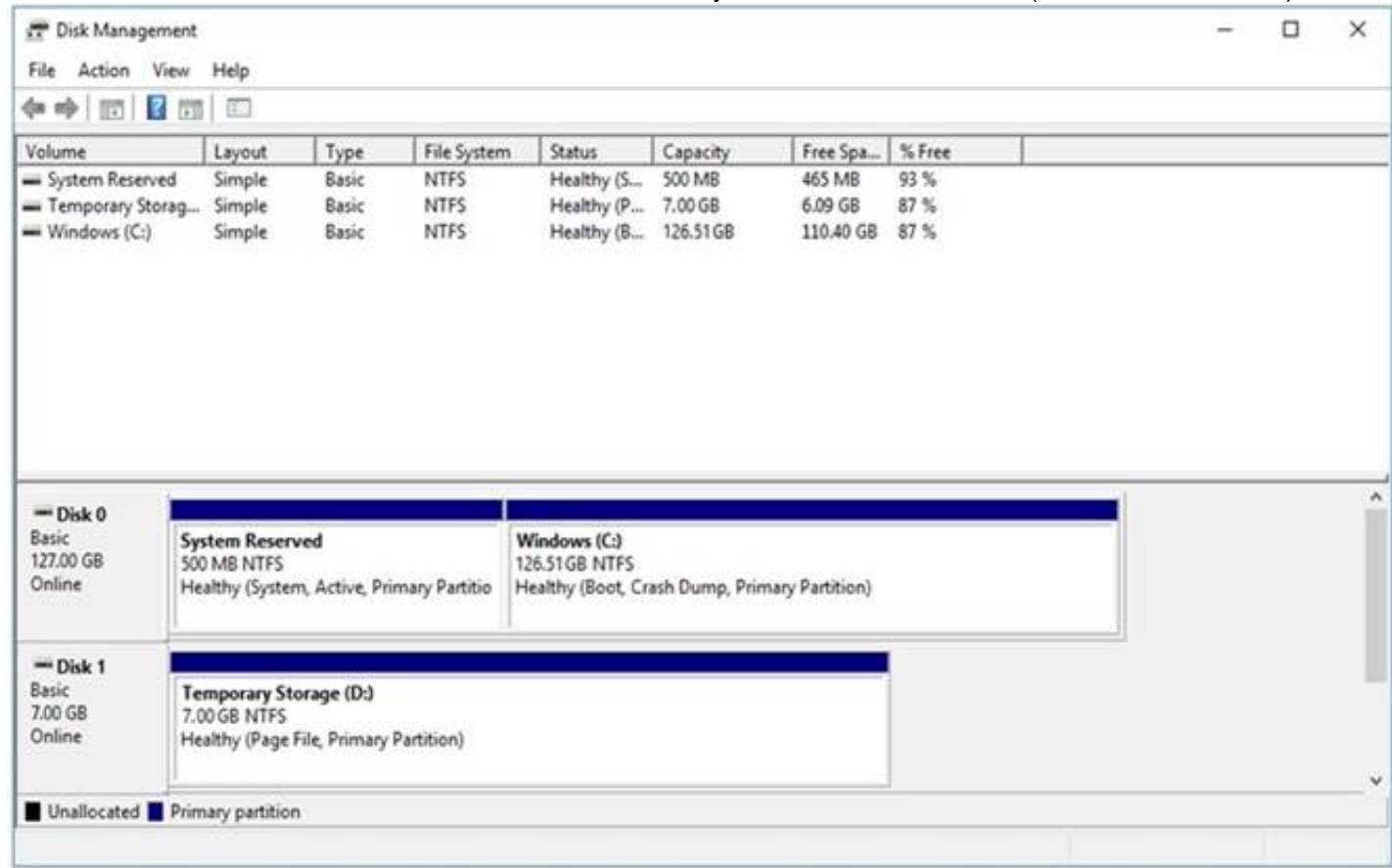
<https://docs.microsoft.com/en-us/azure/security/fundamentals/antimalware>

#### NEW QUESTION 24

DRAG DROP - (Topic 3)

You have a Windows Virtual Desktop deployment.

You have a session host named Host1 that has the disk layout shown in the exhibit. (Click the Exhibit tab.)



You plan to deploy an app that must be installed on D. The app requires 500 GB of disk space. You need to add a new data disk that will be assigned the drive letter D. The solution must maintain the current performance of Host1. Which four actions should you perform in sequence? To answer, move the appropriate actions from the list of actions to the answer area and arrange them in the correct order.

Actions

Move the page file to drive C.

Move the page file to Temporary Storage.

Change the drive letter of Temporary Storage (D:).

Mark Temporary Storage (D:) as **Active**.

Add the new disk and assign drive D.

Move the page file to System Reserved.

Answer Area

⬅️

➡️

⬆️

⬆️

- A. Mastered
- B. Not Mastered

Answer: A

Explanation:

Actions

Move the page file to drive C.

Move the page file to Temporary Storage.

Change the drive letter of Temporary Storage (D:).

Mark Temporary Storage (D:) as **Active**.

Add the new disk and assign drive D.

Move the page file to System Reserved.

Answer Area

Move the page file to drive C.

Change the drive letter of Temporary Storage (D:).

Add the new disk and assign drive D.

Move the page file to Temporary Storage.

NEW QUESTION 29

HOTSPOT - (Topic 3)

You have an Azure Virtual Desktop deployment that contains the session hosts shown in the following table.

Name	Configuration
Host1	RDP Shortpath for managed networks is enabled.
Host2	RDP Shortpath for managed networks is not configured.

You have the users shows in the following table.

Name	Remote Desktop client type
User1	Windows desktop
User2	Web

Users connect to Azure from the locations shown in the following table.

Name	Connection type
Location1	Site-to-Site VPN
Location2	Internet

For each of the following statements, select Yes if the statement is true. Otherwise, select No.  
 NOTE: Each correct selection is worth one point.

### Answer Area

Statements	Yes	No
RDP Shortpath is used when User2 is in Location1 and connects to Host1.	<input type="radio"/>	<input type="radio"/>
RDP Shortpath is used when User1 is in Location1 and connects to Host2.	<input type="radio"/>	<input type="radio"/>
RDP Shortpath is used when User1 is in Location2 and connects to Host1.	<input type="radio"/>	<input type="radio"/>

- A. Mastered  
 B. Not Mastered

Answer: A

Explanation:

### Answer Area

Statements	Yes	No
RDP Shortpath is used when User2 is in Location1 and connects to Host1.	<input checked="" type="radio"/>	<input type="radio"/>
RDP Shortpath is used when User1 is in Location1 and connects to Host2.	<input type="radio"/>	<input checked="" type="radio"/>
RDP Shortpath is used when User1 is in Location2 and connects to Host1.	<input checked="" type="radio"/>	<input type="radio"/>

### NEW QUESTION 34

- (Topic 3)

You have an on-premises network and an Azure subscription. The subscription contains the following:

- A virtual network
- An Azure Firewall instance
- A Azure Virtual Desktop host pool

The virtual network connects to the on-premises network by using a site-to-site VPN.

You need to ensure that only users from the on-premises network can connect to the Azure Virtual Desktop managed resources in the host pool. The solution must minimize administrator effort.

What should you configure?

- A. an Azure Firewall rule  
 B. a conditional access policy  
 C. a network security group (NSG) rule  
 D. a user-defined route

Answer: A

### NEW QUESTION 38

- (Topic 3)

You plan to deploy Windows Virtual Desktop session host virtual machines based on a preconfigured master image. The master image will be stored in a shared image.

You create a virtual machine named Image1 to use as the master image. You install applications and apply configuration changes to Image1.

You need to ensure that the new session host virtual machines created based on Image1 have unique names and security identifiers.



What should you do on Image1 before you add the image to the shared image gallery?

- A. At a command prompt, run the set computername command.
- B. At a command prompt, run the sysprep command.
- C. From PowerShell, run the rename-computer cmdlet.
- D. From the lock screen of the Windows device, perform a Windows Autopilot Reset.

**Answer: B**

**Explanation:**

Reference:

<https://docs.microsoft.com/en-us/azure/virtual-machines/windows/prepare-for-upload-vhd-image#determinewhen-to-use-sysprep>

#### NEW QUESTION 39

DRAG DROP - (Topic 3)

Your on-premises network contains an Active Directory domain that syncs with an Azure AD tenant.

You have an Azure Virtual Desktop host pool that contains Windows 11 session hosts joined to the domain.

You need to configure Azure NetApp Files to store user profile containers.

Which four actions should you perform in sequence? To answer, move the appropriate actions from the list of actions to the answer area and arrange them in the correct order.

NOTE: More than one order of answer choices is correct. You will receive credit for any of the correct orders you select.

#### Actions

#### Answer Area

Create a capacity pool.

Create a new NFS volume.

Create a new SMB volume.

Configure an Active Directory connection to the Azure AD tenant.

Create a new Azure NetApp Files account.

Configure an Active Directory connection to the on-premises domain.



- A. Mastered
- B. Not Mastered

**Answer: A**

**Explanation:**

#### Actions

#### Answer Area

Create a capacity pool.

Create a new NFS volume.

Create a new SMB volume.

Configure an Active Directory connection to the Azure AD tenant.

Create a new Azure NetApp Files account.

Configure an Active Directory connection to the on-premises domain.



Create a new Azure NetApp Files account.

Create a capacity pool.

Configure an Active Directory connection to the Azure AD tenant.

Create a new SMB volume.



#### NEW QUESTION 40

HOTSPOT - (Topic 3)

You network contains an on-premises Active Directory domain that syncs to an Azure Active Directory (Azure AD) tenant. The domain contains the users shown in the following table.

Name	Role	Member of
User1	Desktop Virtualization Workspace Reader	Group1
User2	Desktop Virtualization Application Group Reader	Group2

You have a Windows Virtual Desktop deployment that contains the application groups shown in the following table.

Name	Application	Assignment
AppGroup1	Microsoft Word	Group1
AppGroup2	Microsoft Excel	Group2
AppGroup3	Microsoft PowerPoint	Group1, Group2

You have the workspaces shown in the following table.

Name	Application group
Workspace1	AppGroup1
Workspace2	AppGroup2

For each of the following statements, select Yes if the statement is true. Otherwise, select No.

NOTE: Each correct selection is worth one point.

#### Answer Area

Statements	Yes	No
User1 has PowerPoint listed in the Remote Desktop client.	<input type="radio"/>	<input type="radio"/>
User1 has Word listed in the Remote Desktop client.	<input type="radio"/>	<input type="radio"/>
User2 has PowerPoint listed in the Remote Desktop client.	<input type="radio"/>	<input type="radio"/>

A. Mastered

B. Not Mastered

Answer: A

Explanation:

#### Answer Area

Statements	Yes	No
User1 has PowerPoint listed in the Remote Desktop client.	<input type="radio"/>	<input checked="" type="radio"/>
User1 has Word listed in the Remote Desktop client.	<input checked="" type="radio"/>	<input type="radio"/>
User2 has PowerPoint listed in the Remote Desktop client.	<input type="radio"/>	<input checked="" type="radio"/>

#### NEW QUESTION 43

DRAG DROP - (Topic 3)

You have an Azure Virtual Desktop deployment and the Azure Storage accounts shown in the following table.

You plan to create FSLogix profile containers and store the containers in the storage accounts.

You need to identify which storage accounts support the FSLogix profile containers, and then order the accounts from highest to lowest redundancy.

Which three storage accounts should you identify in sequence? To answer, move the appropriate accounts from the list of accounts to the answer area and arrange them in the correct order.

Storage accounts

storage3

storage5

storage1

storage4

storage2

>

<

Answer Area

↑

↓

- A. Mastered  
 B. Not Mastered

Answer: A

Explanation:

Storage accounts

storage3

storage5

storage1

storage4

storage2

>

<

Answer Area

storage1

storage4

storage2

↑

↓

#### NEW QUESTION 47

- (Topic 3)

You have a Azure Virtual Desktop deployment.

You need to monitor the deployment of using the Azure Virtual Desktop Insights solution in Azure Monitor.

What should you use as the Diagnostic settings destination for the host pool?

- A. Event hub  
 B. Log Analytics workspace  
 C. Storage account

Answer: B

Explanation:

Reference:

<https://docs.microsoft.com/en-us/azure/virtual-desktop/azure-monitor>

#### NEW QUESTION 52

- (Topic 3)

Note: This question is part of a series of questions that present the same scenario. Each question in the series contains a unique solution that might meet the stated goals. Some question sets might have more than one correct solution, while others might not have a correct solution.

After you answer a question in this section, you will NOT be able to return to it. As a result, these questions will not appear in the review screen.

You have the following:

- ? A Microsoft 365 E5 tenant
- ? An on-premises Active Directory domain
- ? A hybrid Azure Active Directory (Azure AD) tenant
- ? An Azure Active Directory Domain Services (Azure AD DS) managed domain
- ? An Azure Virtual Desktop deployment

The Azure Virtual Desktop deployment contains personal desktops that are hybrid joined to the on-premises domain and enrolled in Microsoft Intune.

You need to configure the security settings for the Microsoft Edge browsers on the personal desktops.

Solution: You create and configure a Group Policy Object (GPO) in the on-premises

Does this meet the goal?

- A. Yes  
 B. No

Answer: A

Explanation:

Reference:

<https://www.compete366.com/blog-posts/eight-tips-on-how-to-manage-azure-virtual- desktop-avd/>

#### NEW QUESTION 55

- (Topic 3)

Note: This question is part of a series of questions that present the same scenario. Each question in the series contains a unique solution that might meet the stated goals. Some question sets might have more than one correct solution, while others might not have a correct solution.

After you answer a question in this section, you will NOT be able to return to it. As a result, these questions will not appear in the review screen.

You have a Windows Virtual Desktop host pool named Pool1 that is integrated with an Azure Active Directory Domain Services (Azure AD DS) managed domain.

You need to configure idle session timeout settings for users that connect to the session hosts in Pool1.

Solution: From an Azure AD DS-joined computer, you modify the AADDC Computers GPO settings.

Does that meet the goal?

- A. Yes
- B. No

**Answer:** A

#### NEW QUESTION 59

- (Topic 3)

Your company has a single office and has 40 employees.

You are planning an Azure Virtual Desktop deployment. The estimated user workloads are shown in the following table.

Workload type	Number of users	Bandwidth per session
Light	20	1.5 Mbps
Medium	10	3 Mbps
Heavy	10	5 Mbps

Half the users of each workload type work from home. All the users who work from home do NOT establish a VPN connection to the office. Approximately how much bandwidth is needed between the office and Azure to support the planned workloads?

- A. 9.5 Mbps
- B. 55 Mbps
- C. 110 Mbps
- D. 220 Mbps

**Answer:** B

#### NEW QUESTION 62

HOTSPOT - (Topic 3)

You have a hybrid Azure Active Directory (Azure AD) tenant named contoso.com that contains the users shown in the following table.

Name	Member of
User1	Group1
User2	Group2
User3	Group1, Group3

You have an Azure Virtual Desktop host pool. All the session hosts have a folder named C:\Folder1.

You create an FSLogix Application Masking rule as shown in the following exhibit.

You create assignments for the Application Masking rule as shown in the following exhibit.



Assignments

Rule Set:

Assignment	Applies
Everyone	Yes
CONTOSO\Group1	No
CONTOSO\Group3	Yes
User2@contoso.com	No

Set As Template

Move Up

Move Down

Add

Remove

☐ Rule Set does apply to user/group

☒ Rule Set does not apply to user/group

AD Reporting

OK

Cancel

Apply

For each of the following statements, select Yes if the statement is true. Otherwise, select No.  
NOTE: Each correct selection is worth one point.

Answer Area

Statements	Yes	No
User1 can see folder C:\Folder1 on a session host.	<input type="radio"/>	<input type="radio"/>
User2 can see folder C:\Folder1 on a session host.	<input type="radio"/>	<input type="radio"/>
User3 can see folder C:\Folder1 on a session host.	<input type="radio"/>	<input type="radio"/>

- A. Mastered
- B. Not Mastered

Answer: A

Explanation:

Graphical user interface, text Description automatically generated

References:

<https://docs.microsoft.com/en-us/fslogix/application-masking-rules-ht> <https://docs.microsoft.com/en-us/fslogix/application-masking-users-groups-ht>

NEW QUESTION 64

HOTSPOT - (Topic 3)

You have an A2zure subscription that contains the resources shown in the following table.

You have a virtual machine named Sever 1 that runs Windows Server and is connected to VNet3.

Answer Area

VNet1:

A private endpoint

A service endpoint

A VPN gateway

Virtual network peering

VNet2:

A private endpoint

A service endpoint

A VPN gateway

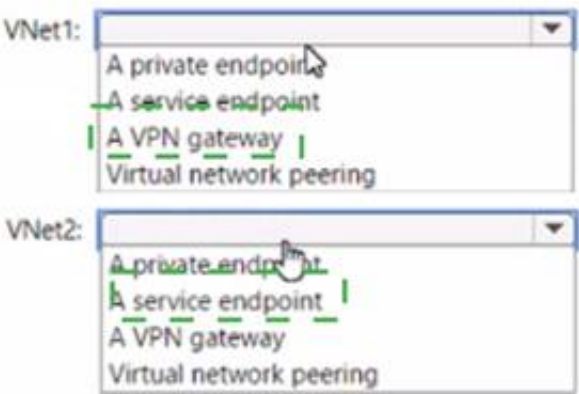
Virtual network peering

- A. Mastered
- B. Not Mastered

Answer: A

Explanation:

Answer Area



NEW QUESTION 66

- (Topic 3)

You have an Azure storage account that contains the generalized Windows 10 disk images shown in the following table.

Name	Format	Disk type
Disk1	VHD	Fixed size
Disk2	VHD	Dynamically expanding
Disk3	VHDX	Fixed size
Disk4	VHDX	Dynamically expanding

You need to create an image that will be used to deploy an Azure Virtual Desktop session  
Which disk should you use?

- A. Disk1
- B. Disk2
- C. Disk3
- D. Disk4

Answer: A

Explanation:

Reference:  
<https://docs.microsoft.com/en-us/azure/virtual-desktop/set-up-customize-master-image>

NEW QUESTION 67

HOTSPOT - (Topic 3)

You have a Windows Virtual Desktop deployment.

You need to ensure that all the connections to the managed resources in the host pool require multi-factor authentication (MFA).

Which two settings should you modify in a conditional access policy? To answer, select the appropriate options in the answer area.

NOTE: Each correct selection is worth one point.

# New

## Conditional access policy

Control user access based on conditional access policy to bring signals together, to make decisions, and enforce organizational policies. [Learn more](#)

Name \*

Conditional Access Policy ✓

### Assignments

Users and groups ⓘ All users	>
Cloud apps or actions ⓘ No cloud apps or actions selected	>
Conditions ⓘ 0 conditions selected	>

### Access controls

Grant ⓘ 0 conditions selected	>
Session ⓘ 0 conditions selected	>

- A. Mastered
- B. Not Mastered

Answer: A

Explanation:



# New

## Conditional access policy

Control user access based on conditional access policy to bring signals together, to make decisions, and enforce organizational policies. [Learn more](#)

Name \*

Conditional Access Policy ✓

### Assignments

<p>Users and groups ⓘ</p> <p>All users</p>	>
<p>Cloud apps or actions ⓘ</p> <p>No cloud apps or actions selected</p>	>
<p>Conditions ⓘ</p> <p>0 conditions selected</p>	>

### Access controls

<p>Grant ⓘ</p> <p>0 conditions selected</p>	>
<p>Session ⓘ</p> <p>0 conditions selected</p>	>

#### NEW QUESTION 71

- (Topic 3)

You have a Windows Virtual Desktop host pool named Pool1 and an Azure Storage account named Storage1.

Storage1 stores FSLogix profile containers in a share folder named share1.

You create a new group named Group1. You provide Group1 with permission to sign in to Pool1.

You need to ensure that the members of Group1 can store the FSLogix profile containers in share1. The solution must use the principle of least privilege.

Which two privileges should you assign to Group1? Each correct answer presents part of the solution.

NOTE: Each correct selection is worth one point.

- A. the Storage Blob Data Contributor role for storage1
- B. the List folder / read data NTFS permissions for share1
- C. the Modify NTFS permissions for share1
- D. the Storage File Data SMB Share Reader role for storage1
- E. the Storage File Data SMB Share Elevated Contributor role for storage1
- F. the Storage File Data SMB Share Contributor role for storage1

**Answer:** CF

**Explanation:**

Reference:

<https://docs.microsoft.com/en-us/azure/virtual-desktop/create-file-share>

#### NEW QUESTION 75

- (Topic 3)

You have an Azure Virtual Desktop deployment. You plan to use FSLogix profile containers.

You need to recommend a solution that will be used to store the containers. The solution must meet the following requirements:

- \* The containers must be stored on solid-state drives (SSDs)
- \* Minimize administrative effort
- \* Minimize cost

the What should you recommend?

- A. Azure NetApp Files
- B. Azure Files Standard

- C. Azure Blob Storage Premium
- D. Azure Files Premium

Answer: D

Explanation:

"Use Azure Files for FSLogix user profile data with Azure Virtual Desktop Azure Files provides multiple tiers that you can select based on your cost and performance needs."  
- <https://azure.microsoft.com/en-us/services/storage/files/#security>  
"Premium file shares enable highly I/O-intensive workloads, with high throughput and low latency. Premium file shares are offered on high-performance solid-state drive (SSD) based storage."  
- <https://azure.microsoft.com/en-us/pricing/details/storage/files/>

NEW QUESTION 79

HOTSPOT - (Topic 3)  
You have an Azure Virtual Desktop deployment that contains a host pool named Pool1. Pool1 contains two session hosts. Pool1 is configured as shown in the following exhibit.  
Use the drop-down menus to select the answer choice that completes each statement based on the information presented in the graphic.  
NOTE- Each correct selection is worth one point.

Name

Pool1

Configuration

Personal desktop

Yes

No

Start VM on connect

No

Yes

Validation environment

No

Yes

Friendly name

Description

Created through the Azure Virtual Desktop extension

Load balancing algorithm

Depth-first

Max session limit

5

Service updates will be applied to Pool1 [answer choice].

once every 30 days

as soon as the updates are released

once every 30 days

once the updates are generally available

New user connections will be [answer choice].

connected to the session host that has the highest number of existing connections and has not reached the maximum session limit

connected to the session host that has the highest number of existing connections and has not reached the maximum session limit

evenly distributed across all available hosts

rejected once five sessions are established

- A. Mastered
- B. Not Mastered

Answer: A

Explanation:

Service updates will be applied to Pool1 [answer choice].

once every 30 days

as soon as the updates are released

once every 30 days

once the updates are generally available

New user connections will be [answer choice].

connected to the session host that has the highest number of existing connections and has not reached the maximum session limit

connected to the session host that has the highest number of existing connections and has not reached the maximum session limit

evenly distributed across all available hosts

rejected once five sessions are established

NEW QUESTION 81

- (Topic 3)  
You have an Azure Virtual Desktop deployment that contains the resources shown in the following table.

Name	Description
Pool1	Pooled host pool
Host1	<ul style="list-style-type: none"> <li>Windows 11 session host in Pool1</li> <li>Has a system-assigned managed identity enabled</li> <li>Has a user-assigned managed identity named Managed1 enabled</li> </ul>

You plan to enable Start VM on connect for Pool1.

You create a custom Azure role named Role1 that has sufficient permissions to start virtual machines on demand.

You need to ensure that the session hosts in Pool1 can start on demand. To which service principal should you assign Role1?

- A. Managed1
- B. Azure Virtual Desktop
- C. Azure Automation
- D. Azure Compute

**Answer:** B

#### NEW QUESTION 84

HOTSPOT - (Topic 3)

You plan to deploy Windows Virtual Desktop.

Users have the devices shown in the following table.

Type	Platform
Tablet	Windows 10 Pro
Phone	Android
Laptop	macOS

From which device types can the users connect to Windows Virtual Desktop resources by select the appropriate options in the answer area.

NOTE: Each correct selection is worth one point.

Remote Desktop client app:

▼

Tablet only

Tablet and phone only

Tablet and laptop only

Tablet, phone, and laptop

Remote Desktop web client:

▼

Tablet only

Tablet and phone only

Tablet and laptop only

Tablet, phone, and laptop

- A. Mastered
- B. Not Mastered

**Answer:** A

**Explanation:**



Remote Desktop client app:

▼

Tablet only

Tablet and phone only

Tablet and laptop only

Tablet, phone, and laptop

Remote Desktop web client:

▼

Tablet only

Tablet and phone only

Tablet and laptop only

Tablet, phone, and laptop

#### NEW QUESTION 87

- (Topic 2)

Which two roles should you assign to Admin2 to meet the security requirements? Each correct answer presents part of the solution.

NOTE: Each correct selection is worth one point.

- A. Desktop Virtualization Host Pool Contributor
- B. Desktop Virtualization Application Group Contributor
- C. Desktop Virtualization Workspace Contributor
- D. Desktop Virtualization Application Group Reader
- E. User Access Administrator

**Answer:** CD

#### Explanation:

Reference:

<https://docs.microsoft.com/en-us/azure/virtual-desktop/rbac>

#### NEW QUESTION 91

DRAG DROP - (Topic 2)

You need to ensure that you can implement user profile shares for the Boston office users. The solution must meet the user profile requirements.

Which four actions should you perform in sequence? To answer, move the appropriate actions from the list of actions to the answer area and arrange them in the correct order.

#### Actions

Create a file share and configure share permissions.

Sign in to VM1 as Admin1.

Run the `Join-AzStorageAccountForAuth` cmdlet.

Sign in to VM1 as CloudAdmin1.

Install the `AzFilesHybrid` PowerShell module.

#### Answer Area



- A. Mastered
- B. Not Mastered

**Answer:** A

#### Explanation:

#### Actions

- Create a file share and configure share permissions.
- Sign in to VM1 as Admin1.
- Run the Join-AzStorageAccountForAuth cmdlet.
- Sign in to VM1 as CloudAdmin1.
- Install the AzFilesHybrid PowerShell module.

#### Answer Area

- Sign in to VM1 as CloudAdmin1.
- Create a file share and configure share permissions.
- Install the AzFilesHybrid PowerShell module.
- Run the Join-AzStorageAccountForAuth cmdlet.

#### NEW QUESTION 93

HOTSPOT - (Topic 2)

You need to recommend a DNS infrastructure that meet the performance requirements. What should you recommend? To answer, select the appropriate options in the answer area. NOTE: Each correct selection is worth one point.

#### Answer Area

For internet name resolution, modify the:

- Caching configuration of DNS resolvers in the Boston office
- DNS resolvers in the Boston office to use the ISP's DNS servers as forwarders
- DNS resolvers in the Chennai office to use the ISP's DNS servers as forwarders

To validate the the round-trip time to Azure Virtual Desktop, use:

- Virtual Desktop Optimization Tool
- Azure Virtual Desktop Experience Estimator
- Connection troubleshooting in Azure Network Watcher

- A. Mastered
- B. Not Mastered

Answer: A

Explanation:

#### Answer Area

For internet name resolution, modify the:

- Caching configuration of DNS resolvers in the Boston office
- DNS resolvers in the Boston office to use the ISP's DNS servers as forwarders
- DNS resolvers in the Chennai office to use the ISP's DNS servers as forwarders

To validate the the round-trip time to Azure Virtual Desktop, use:

- Virtual Desktop Optimization Tool
- Azure Virtual Desktop Experience Estimator
- Connection troubleshooting in Azure Network Watcher

#### NEW QUESTION 97

- (Topic 2)

You need to deploy the session hosts to meet the deployment requirements Which PowerShell cmdlet should you run first?

- A. New-AzwvdRegistratratiioninfo
- B. Get-AzApiManagementSsoToken
- C. Set-AzWMADDomainExtension
- D. Update-AZwvdSessionHost

Answer: C

Explanation:

Reference:

https://rozemuller.com/avd-automation-cocktail-avd-automated-with-powershell/

#### NEW QUESTION 102

- (Topic 1)

Which setting should you modify for VNET4 before you can deploy Pool4?

- A. Service endpoints
- B. Address space
- C. DNS servers
- D. Access control (IAM)
- E. Peerings

Answer: C

Explanation:

DNS should be configured to use an Active Directory Domain Controller.

#### NEW QUESTION 107

- (Topic 1)

You plan to implement the FSLogix profile containers for the Seattle office. Which storage account should you use?

- A. storage2
- B. storage4
- C. storage3
- D. storage1

**Answer:** A

**Explanation:**

Reference:

<https://docs.microsoft.com/en-us/azure/virtual-desktop/store-fslogix-profile>

**NEW QUESTION 110**

- (Topic 1)

Which role should you assign to Operator2 to meet the technical requirements?

- A. Desktop Virtualization Session Host Operator
- B. Desktop Virtualization Host Pool Contributor
- C. Desktop Virtualization User Session Operator
- D. Desktop Virtualization Contributor

**Answer:** D

**Explanation:**

Reference:

<https://docs.microsoft.com/en-us/azure/virtual-desktop/rbac>

**NEW QUESTION 112**

HOTSPOT - (Topic 3)

You have a Windows Virtual Desktop deployment.

Many users have iOS devices that have the Remote Desktop Mobile app installed.

You need to ensure that the users can connect to the feed URL by using email discovery instead of entering the feed URL manually.

How should you configure the \_msradc DNS record? To answer, select the appropriate options in the answer area.

NOTE: Each correct selection is worth one point.

Record type:

A
CNAME
SRV
TXT

Record value:

https://rdweb.wvd.microsoft.com/api/arm/feeddiscovery
https://rdweb.wvd.microsoft.com/api/feeddiscovery
https://rdweb.wvd.microsoft.com/Feed/webfeed.aspx
webfeeddiscovery.aspx

- A. Mastered
- B. Not Mastered

**Answer:** A

**Explanation:**

\* 1. TXT

\* 2. <https://rdweb.wvd.microsoft.com/api/arm/feeddiscovery>

Set up email discovery to subscribe to your RDS feed <https://docs.microsoft.com/en-us/windows-server/remote/remote-desktop-services/rds-email-discovery>

<https://docs.microsoft.com/nl-nl/learn/modules/m365-deploy-wvd/2-deployment-overview>

**NEW QUESTION 116**

- (Topic 3)

You have an Azure Virtual Desktop deployment that contains a host pool. The host pool ephemeral disks.

You need to deploy Microsoft OneDrive for Business.

Which two actions should you perform for each session host? Each correct answer presents part of the solution.

NOTE: Each correct selection is worth one point.

- A. Install FSLogix.
- B. Install the OneDrive sync app by using the per-machine installation option.
- C. Implement Application Masking.
- D. Install the OneDrive sync app by using the per-user installation option.
- E. Deploy an MSIX app attach package.

**Answer:** AB

**Explanation:**

The two actions you should perform for each session host in order to deploy Microsoft OneDrive for Business are:



- \* A. Install FSLogix - FSLogix provides a single-user solution for running multiple OneDrive for Business clients simultaneously on the same session host.
- \* B. Install the OneDrive sync app by using the per-machine installation option - according to the Microsoft AZ-140 Official Guide, “OneDrive for Business supports per-machine installation, which is required for a multi-user VDI environment.” This means that the OneDrive sync app must be installed on each session host using the per-machine installation option.

#### NEW QUESTION 118

HOTSPOT - (Topic 3)

You have an Azure subscription named Subscription1 that contains the users shown in the following table.

Name	Member of
User1	Group1, Group3
User2	Group2, Group3

Subscription1 contains the Azure Virtual Desktop host pools shown in the following table.

Name	Session host in host pool	Session host public inbound ports
Pool1	P1-0.contoso.com	None
Pool2	P2-0.contoso.com	None

Subscription1 contains the Azure Virtual Desktop application groups shown in the following table.

Name	Host pool	Application group type
AppGroup1	Pool1	Desktop
AppGroup2	Pool2	Desktop

You perform the role assignments shown in the following table.

Role	To group	For resource
Desktop Virtualization Reader	Group3	Subscription1
Desktop Virtualization User Session Operator	Group1	Pool1
Desktop Virtualization User	Group3	AppGroup2
Virtual Machine User Login	Group1	P1-0.contoso.com

For each of the following statements, select Yes if the statement is true. Otherwise, select

NOTE: Each correct selection is worth one point. Hot Area:

User1 can connect to the P1-0.contoso.com session host.

☐
☐

User2 can connect to the P1-0.contoso.com session host.

☐
☐

User2 can connect to the P2-0.contoso.com session host.

☐
☐

- A. Mastered  
 B. Not Mastered

Answer: A

Explanation:

Yes, No, Yes

#### NEW QUESTION 121

- (Topic 3)

Your network contains an on-premises Active Directory domain and a Windows Virtual Desktop deployment.

The computer accounts for all the session hosts are in an organizational unit (OU) named WVDHostsOU. All user accounts are in an OU named CorpUsers.

A domain administrator creates a Group Policy Object (GPO) named Policy1 that only contains user settings.

The administrator links Policy1 to WVDHostsOU.

You discover that when users sign in to the session hosts, none of the settings from Policy1 are applied.

What should you configure to apply GPO settings to the users when they sign in to the session hosts?

- A. loopback processing  
 B. FSLogix profiles

- C. mandatory Roaming User Profiles
- D. restricted groups

**Answer:** A

**Explanation:**

Reference:

<https://www.linkedin.com/pulse/windows-virtual-desktop-remoteapps-jason-byway>

**NEW QUESTION 123**

- (Topic 3)

You have an Azure Virtual Desktop deployment.

You plan to create a new host pool named Pool1 that will contain five Windows 11 session hosts.

You need to enable secure boot and vTPM on the session hosts. How should you configure the Virtual Machines settings?

- A. Enable encryption at rest and a platform-managed key.
- B. Enable a system-assigned managed identity.
- C. Set Network security group to Advanced.

**Answer:** B

**NEW QUESTION 125**

HOTSPOT - (Topic 3)

You have an Azure Virtual Desktop host pool named Pool1 and an Azure Storage account named storage1. Pool1 and storage1 are in the same Azure region.

The current network utilization of the session hosts during peak hours is 95%.

You plan to use FSLogix profile containers stored in storage1 for users that connect to Pool1.

You need to configure the session hosts and storage1 to minimize network latency when loading and updating profiles.

What should you do? To answer, select the appropriate options in the answer area.

NOTE: Each correct selection is worth one point.

For storage1:

	▼
Configure network routing.	
Configure a private endpoint.	
Configure the storage account type.	

For the session hosts:

	▼
Enable Write Accelerator.	
Increase the Virtual machine size.	
Add additional network adapters.	

- A. Mastered
- B. Not Mastered

**Answer:** A

**Explanation:**

For storage1:

	▼
Configure network routing.	
Configure a private endpoint.	
Configure the storage account type.	

For the session hosts:

	▼
Enable Write Accelerator.	
Increase the Virtual machine size.	
Add additional network adapters.	

**NEW QUESTION 128**

- (Topic 3)

Your network contains an on-premises Active Directory domain named contoso.com. You have an Azure subscription that contains the resources shown in the following table.



Name	Type
Account1	Azure NetApp Files account
Account2	General purpose v2 storage account
Account3	Azure Files storage account
AVDPool1	Azure Virtual Desktop host pool

You need to create a share that will host FSLogix profiles for AVDPool1. The solution must meet the following requirements:

\* Maximize read and write performance for the profiles.

\* Control access to the SMB share by using the users and groups stored in contoso.com. Which account should you use to host the share?

- A. Account1
- B. Account2
- C. Account3

**Answer:** A

**Explanation:**

<https://learn.microsoft.com/en-us/azure/storage/files/storage-files-netapp-comparison>

### NEW QUESTION 131

HOTSPOT - (Topic 3)

You have an Azure Virtual Desktop deployment that contains two users named User1 and User2 and the storage accounts shown in the following table.

Name	Role
storage1	Storage File Data SMB Share Contributor assigned to User1 Storage File Data SMB Share Elevated Contributor assigned to User2
storage2	Storage File Data SMB Share Contributor assigned to User1 Owner assigned to User2

The File share settings for storage1 are configured as shown in the following exhibit.

+ File share Refresh				
File share settings				
Active Directory: Configured Soft delete: 7 days Share capacity: 5 TiB				
Search file shares by prefix (case-sensitive)				Show deleted shares
Name	Modified			
share1	10/9/2021, 4:30:53 AM	Transaction optimized	5TiB	...
share2	10/9/2021, 4:34:05 AM	Hot	5TiB	...
share3	10/9/2021, 4:34:29 AM	Cool	5TiB	...

The File share settings for storage2 are configured as shown in the following exhibit.

+ File share Refresh				
File share settings				
Active Directory: Not configured Soft delete: 7 days Share capacity: 5 TiB				
Search file shares by prefix (case-sensitive)				Show deleted shares
Name	Modified			
share4	10/9/2021, 4:45:20 AM	Transaction optimized	5TiB	...

For each of the following statements, select Yes if the statement is true. Otherwise, select No.

NOTE: Each correct selection is worth one point. Hot Area:

### Answer Area

#### Statements

Yes

No

User1 can access share1 by using Windows credentials.

☐
☐

User2 can access share4 by using Windows credentials.

☐
☐

User2 can enable SMB Multichannel for storage2.

☐
☐

- A. Mastered
- B. Not Mastered



**Answer:** A

**Explanation:**

YES, Yes , Yes

<https://docs.microsoft.com/en-us/azure/storage/files/storage-files-identity-ad-ds-assign-permissions?tabs=azure-portal> "Once you've enabled Active Directory Domain Services (AD DS) authentication on your storage account, you must configure share-level permissions in order to get access to your file shares. There are two ways you can assign share-level permissions. You can assign them to specific Azure AD users/user groups and you can assign them to all authenticated identities as a default share level permission."

**NEW QUESTION 136**

.....

## THANKS FOR TRYING THE DEMO OF OUR PRODUCT

Visit Our Site to Purchase the Full Set of Actual AZ-140 Exam Questions With Answers.

We Also Provide Practice Exam Software That Simulates Real Exam Environment And Has Many Self-Assessment Features. Order the AZ-140 Product From:

<https://www.2passeasy.com/dumps/AZ-140/>

## Money Back Guarantee

### **AZ-140 Practice Exam Features:**

- \* AZ-140 Questions and Answers Updated Frequently
- \* AZ-140 Practice Questions Verified by Expert Senior Certified Staff
- \* AZ-140 Most Realistic Questions that Guarantee you a Pass on Your FirstTry
- \* AZ-140 Practice Test Questions in Multiple Choice Formats and Updatesfor 1 Year